



Brewford 2257

W. D. ATLEE'S



STAMP CIRCULAR.

32, ELLINGTON STREET,

LONDON, N. SEPTEMBER, 10th 1865.

I have but little to report this month respecting new issues, the only stamps that have fallen under my notice are,—New Grenada 1c.—In the centre are the arms, surmounted by an Eagle, value at bottom; above Correos, and at sides, E.U. de Colombia, the whole enclosed in a fancy frame, printed in rose on white paper, and of rectangular shape. Two stamps are (or will be) issued by a Danish Railway Company; not having seen them, can only say, they are of the values of 4 *Sk.* and 8 *Sk.* and printed in Red and Green, respectively, I hope to describe them more fully in my next.

Above is an engraving of a rare Paraguay, value 2 Reals, it was printed in Red, Blue, and Green, the first named is now the only colour in use, and that only by the government.

The last new essays in the market are Hanover—Head of King, 2 gr. on Blue, Brown, Green, and Red paper.—Wurtemberg—Arms, 1 *Kr.* Silver on Green paper, Mauve on Green, Green on Yellow, and Lake on Rose paper. Forgeries I am glad to say are slightly on the decrease.

There is very little doing now, in consequence of the market being overstocked with all kinds of both Colonial and others. Mexico first issue are fetching good prices, as are also Luzon and the first issues of Spain.

Dealers sending their price list, magazines &c., will receive this circular monthly.

W. D. ATLEE.





32, ELLINGTON STREET.

LONDON. N.

The last month has been very fertile in new issues, of which a list is below. viz;
BERMUDA.—Head of Queen to left, above, BERMUDA, below value in words, Rect, white paper, 1d. Red, 6d. Lilac, 1s. Green.

VANCOUVERS ISLAND.—Similar design to the above, 5 cents. Red, 10 cents. Blue, Rect.

BRITISH COLUMBIA.—Within an oval band inscribed BRITISH COLUMBIA, POSTAGE THREE PENCE. is a letter V, surmounted by a gothic crown, the angles filled in with plaid, in colour Blue on White glazed paper.

DENMARK.—Same design as present issue, 2sk. Blue, perforated, as are also the 4sk. and 16sk.

SCHLESWIG HOLSTEIN.—In an oval is the legend SCHLESWIG HOLSTEIN, in the centre, figure indicating value. Rectangular;

1½ Schilling	—	1s. gr.	Blue.
2 Schilling			Blue.
3 Schilling	—	3s. gr.	Bistre.

CAPE OF GOOD HOPE.—Next month we may expect to receive three new Stamps to complete the rectangular series for this colony, the colours are to be;

One Penny,	Red.
Fourpence	Blue.
Sixpence,	Lilac.

COLUMBIA.—In my next will give a description of three new Stamps for this country.

HANOVER.—A few of the old "Bestellgeld-frei" hand stamped, blue envelope stamps on yellow paper have been discovered, and are fetching about Four Shillings each.

Stamps of new issues in good demand, but little doing in the commoner kinds.

Dealers sending their price lists, magazines &c., will receive this circular monthly.



32, ELLINGTON STREET.

LONDON. N.

Above are engravings of the three new stamps issued for New Columbia, mentioned in my last circular. The triangular one is for newspapers, that on the left is for unpaid, the other for registered letters, the square stamps are in black ink on white paper, the triangular one is printed in black on faint lavender paper, all three are lithographed. Of other new stamps may be mentioned the following, viz.

BRUNSWICK.—The new rectangular series has been heralded in by a $\frac{1}{2}$ gr. black, the same device as the essays which have been in the market since January last. In the centre of an upright oval is a horse prancing under a crown, above Braunschweig, below, Groschen, at sides value, in relief on white paper.

CAPE OF GOOD HOPE.—The 6d. of new issue arrived from the Cape by the last mail, the remainder are expected soon,

DENMARK.—A 3 schilling stamp (a novel value for this kingdom) was issued on the 10th. ult., of the same device as the present series, printed in Lilac and perforated.

FRANCE.—Two stamps of the respective values of 20fr. 40fr. are to be issued shortly for heavy letters.

FRENCH COLONIES.—We may expect to receive a 20 cents, blue, and 80 cents, canine soon, for according to a French magazine they are already printed.

ITALY.—An Italian correspondent states that the new 20 cents, will be Brown.

SANDWICH ISLANDS.—Similar design to issue with figure of value in centre, only the legend round the stamp is differently placed. Uka Leta above, Inter Island to left, Hawaiian Postage to right, value below.

1 cent	—	Blue.	} On rather thick white wove paper.
2 cents	—	Blue.	
5 cents	—	Blue.	

THURN-UN-TAXIS.—The 3 and 9 kr. are now perforated, A rumour is current that a new issue is in preparation, both for the Northern and Southern states, but is not authenticated.

UNITED STATES.—The new envelopes are now issued, the letter size is in value 6 cents, and is of a purple colour, the 3 cents is the official size, and is printed in chocolate. A new adhesive 1 cent will *not* be issued.

VICTORIA.—The colour of the 2d. is now a washy pale lilac.—The stamp trade in America must be on the increase, as they now have six magazines, and about double the number of price lists, the last monthly is the *Curiosity Shop*, a small but very good publication, of Messrs. Haines & Olcott, of Chicago. The price catalogue of Messrs. Winterburn of Cincinnati, is the largest and best that has yet been issued in that country, if we except Mr. Klines *Collectors Manuel*, The last work on Forged Stamps that has appeared is by Mr. J. M. Stourton, and is quite worth a shilling. the price at which it is published. Market is rather more brisk than last month, U. S. locals in very little demand.

Registered.

W. D. ATLEE'S STAMP CIRCULAR, December 1st, 1865.



32, ELLINGTON STREET.

LONDON. N.

At almost the close of the year we receive the long expected new issue of BELGIUM, the values are, with arms of country 1c. grey, 2c. blue, 5c. bistre, with head of King (various ornamentations) 10c. grey, 20c. blue, 30c. bistre, 40c. carmine, 1fr. lilac. Only the 30c. and 1fr. have as yet been issued to the public.

BRUNSWICK.—Same design as mentioned in my last, 1 gr. rose, 2 gr. blue, 3 gr. bistre, adhesive and envelopes.

GREAT BRITAIN.—The 9d. has now the letters in angles enlarged.

URUGUAY.—New Stamps of the value of 5c. 10c. 15c. and 20c. are to be issued in January next.

NEW ZEALAND.—A new Stamp, a 4d. rose, same design as present issue was issued last month.

SCHLESWIG.—Similar design to above engraving, $\frac{1}{2}$ s. green, $1\frac{1}{2}$ s. lilac, $1\frac{1}{2}$ s. rose, 2s. blue, 4s. bistre,

HOLSTEIN.—Same values and colours as the last, but with inscription Herzogth Holstien.

SHANGHAI.—A new local has been issued, and will be figured in my next.

In a defunct magazine there was mentioned a stamp paper for Panama. As this has been copied into almost all the other journals, I think it as well to inform collectors that there is no such paper in existence.

All the latest issues are in good demand. The new 1 cent. blue Sandwich Islands are fetching about 1/- each, the older issues of that kingdom still keep at same prices.

The market is overcrowded with U. S. locals, of which new kinds appear every day, so that collectors are fast giving up collecting them. Essays will also share the same fate if they keep on multiplying at the present rate.

Mixed used Colonials and Continentals are in good demand.

W. D. ATLEE.

Registered.

W. D. ATLEE'S STAMP CIRCULAR, January 1st, 1866.



32, ELLINGTON STREET.

LONDON. N.

Among the stamps issued during the past month are the following, viz.—

GERMANY (SOUTH.)—Same design as the other envelope stamps 1 *kr.* green, on white paper.

COLUMBIA.—Again we have three new stamps for this country, engravings of which are above, the colours are as follows, viz.

25	cents.	—	Blue.
50	—	—	Yellow.
1	peso	—	Lilac.

SHANGHAI.—I intended giving this month a fac-simile of the new local but could not procure it in time.—In the centre is a dragon, above SHANGHAI, L. P. O. colours and values are as follows.

2	candareens	—	—	Black.
4	—	—	—	Yellow.
8	—	—	—	Green.
18	—	—	—	Red.

On the 1st. of this month are to be issued stamps for URUGUAY.—In centre is a large figure of value partly covered by a small oval containing the arms surmounted by rays, at four sides, REPUBLICA ORIENTAL DEL URUGUAY MONTEVIDEO.

5	centesimos	—	Blue.
10	—	—	Green.
15	—	—	Yellow.
20	—	—	Red.

Circulars have been issued by G. W. Winterburn, & Co. of Cincinnati, and Industria & Co. of Preston, both of which contain a good deal of information.

Business has been more lively during the past month, exports to America having much increased.

Inland trade on the decline.

Used stamps in poor demand.

W. D. ATLEE.



32, ELLINGTON STREET.

LONDON. N.

Since my last of the 1st. instant. I have to report the following, viz.;

NEWFOUNDLAND.—The new issue for this colony has now arrived, design of each is different, and may be thus described.

In centre is a fish, at each corner the figure 2, at sides the same repeated in letters, at foot Two CENTS, above NEWFOUNDLAND, oblong, and perforated.

2 cents — Green.

In an arched oblong is a beaver, above which is NEWFOUNDLAND, and the word Five repeated twice, at each corner is a figure representing the value, below is FIVE CENTS, the remainder of the stamp filled in with fancy pattern, oblong, perforated.

5 cents — Chocolate.

Under the inscription NEWFOUNDLAND is a ship in full sail, below is the value in full. at sides in small circles are 13 in figures, a fancy border completes the stamp. oblong, perforated.

13 cents — Yellow.

SPAIN.—The 20 c. of the new series has appeared, it bears a resemblance to the 1860 issue, in centre is the head of Queen to the left, above is CORREOS, below 20 CENTS DE ESCO. in the upper corner are two shields the one on the left containing the castle, and the other the lion, both crowned, perforated.

20 cents — Lilac.

LUBECK.—A 1 ½ sch. lilac has been issued, both in adhesive and envelopes.

Above is an engraving of the SHANGHAI, mentioned in my last.

COLLECTORS HERALD.—This magazine made its reappearance on 1st. instant. It is greatly improved and contains very interesting information respecting not only stamps, but curiosities, ferns, fishing and other subjects also.

W. D. ATLEE.

W. L. ATHER STAMP COLLECTOR, 1001 N. 1st St., Philadelphia, Pa.



10c. Franklin D. Roosevelt

1001 N. 1st St.

Since my lot of the lot listed I have to report the following:
The above-mentioned lot was found for this stamp in a box of
and was in the original
In center of stamp, at right corner the figure 10, at edge the same
and the figure 10, at edge the same and perforated.

It is an oval stamp in a square which is perforated on all sides
and at each corner is a light surrounding the value below is five cents, the
stamp is with heavy paper, strong perforated.

Under the inscription "Franklin D. Roosevelt" in the center of the stamp
in each corner are 10 in a square, a heavy border around the stamp, strong
10 cents

There are 25 of the new series has appeared. It bears a resemblance to the
in center of the stamp, at right corner the figure 10, at edge the same
and the figure 10, at edge the same and perforated.

There are 25 of the new series has appeared. It bears a resemblance to the
in center of the stamp, at right corner the figure 10, at edge the same
and the figure 10, at edge the same and perforated.

Registered.

W. D. ATLEE'S STAMP CIRCULAR, April 2nd, 1866.



32, ELLINGTON STREET.

LONDON. N.

My last was under date of 15th. January, since which there has been many new stamps. Amongst others EGYPT. 5, 10, 20 paras, 1, 2, 5 and 10 piastres.

BRITISH HONDURAS, favours the timbrophilic world with a 1d. 6d. and 1s. A tenpenny has been issued for VICTORIA, and from FINLAND we have four additional stamps, bearing respectively the values of 5, 10, 20 and 40 pen.

The complete set of the new series of NEWFOUNDLAND have been in the market since February, and are in good demand.

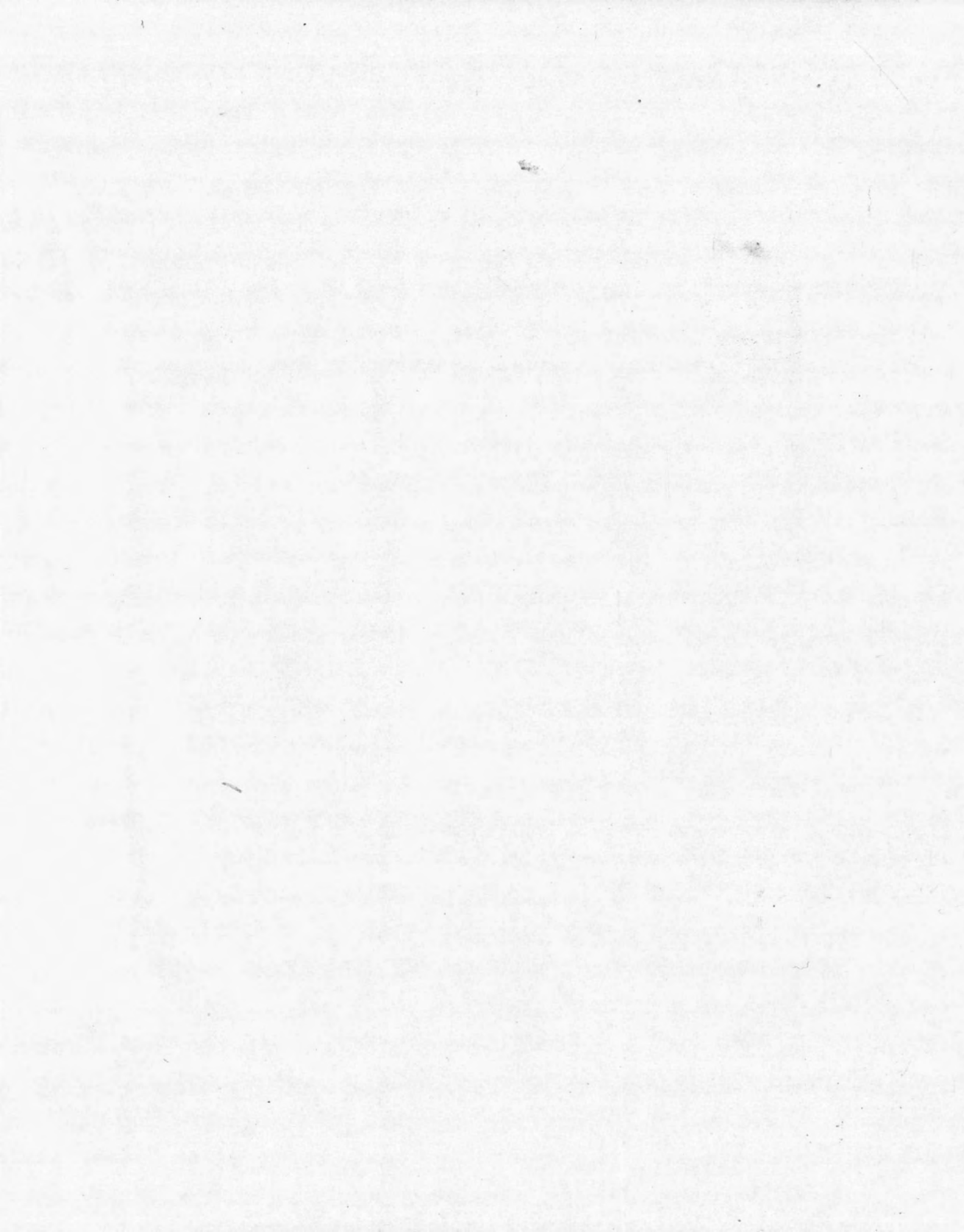
Prices of the commoner kinds, especially Germany have fallen considerably during the past few months, the supply being greater than the demand.

Advices from St. John, New Brunswick, state that the principal dealers there have formed themselves into a company, for the purpose of having uniform charges, to which each member (trading individually) has to comply with. The directors are Messrs. E. A. Craig, G. Stewart Junr, A. D. Robertson, and D. C. Dawson.

The New Brunswick *GAZETTE* states that the BALDWINS RAILROAD POSTAGE labels have been recently manufactured for the purpose of duping collectors.

The circular of Messrs. Industria & Co. continues to appear monthly with an excellent, and authentic description of new issues, &c. It now seems to be fully established.

W. D. ATLEE.



W. D. ATLEE'S STAMP CIRCULAR, May 1st, 1866.



32, ELLINGTON STREET.
LONDON. N.

Above is a fac-simile of the new issue for MONTEVIDEO. There are four values, viz;

5	centesimi	—	—	Blue.
10	"	—	—	Green.
15	"	—	—	Yellow.
20	"	—	—	Rose.

HAMBURG.—From this city we receive a new adhesive, and seven envelopes. The value of the former is $1\frac{1}{2}$ sch. pink; the envelopes are

$\frac{1}{2}$	sch.	—	—	Black.
$1\frac{1}{4}$	"	—	—	Mauve.
$1\frac{1}{2}$	"	—	—	Pink.
2	"	—	—	Orange.
3	"	—	—	Blue.
4	"	—	—	Green.
7	"	—	—	Magenta.

SWEDEN.—The 17 öre lilac and 20 öre scarlet have now appeared, They are of similar design to the brown 3 öre.

FINLAND.—The stamp of which I give a cut is printed in two colours; the band inscribed STADSPOST in red, and the remainder of the design green.

THURN AND TAXIS, NORTH.—Same design as current issue, enov. $\frac{1}{4}$ s. gr. black.

CUBA.—Same device as old series, value in centesimos, and 1866 at foot.

5	centesimos	—	—	lilac.
10	"	—	—	Blue.
20	"	—	—	Green.
40	"	—	—	Rose.

HAITI.—In addition to the 1 real, there is now a $\frac{1}{2}$ real green.

VICTORIA.—Same design as the recently issued tenpenny, 6d. blue.

BERMUDA.—A 2d. blue has lately been issued.

ST. KITTS.—Above is an engraving of the proposed issue for this colony.

Common used stamps in poor demand, mostly required for exportation. New issues, and rarer stamps are fetching moderate prices.

W. D. ATHER'S STAMP CIRCULAR MAY 28, 1902



1041000 25
The following stamps

There is a list of the new stamps for the year 1902. There are four stamps in this list. The value of the stamps is as follows:

10c	10c	10c	10c
15c	15c	15c	15c
20c	20c	20c	20c
25c	25c	25c	25c

The following stamps are also in the list. The value of the stamps is as follows:

10c	10c	10c	10c
15c	15c	15c	15c
20c	20c	20c	20c
25c	25c	25c	25c

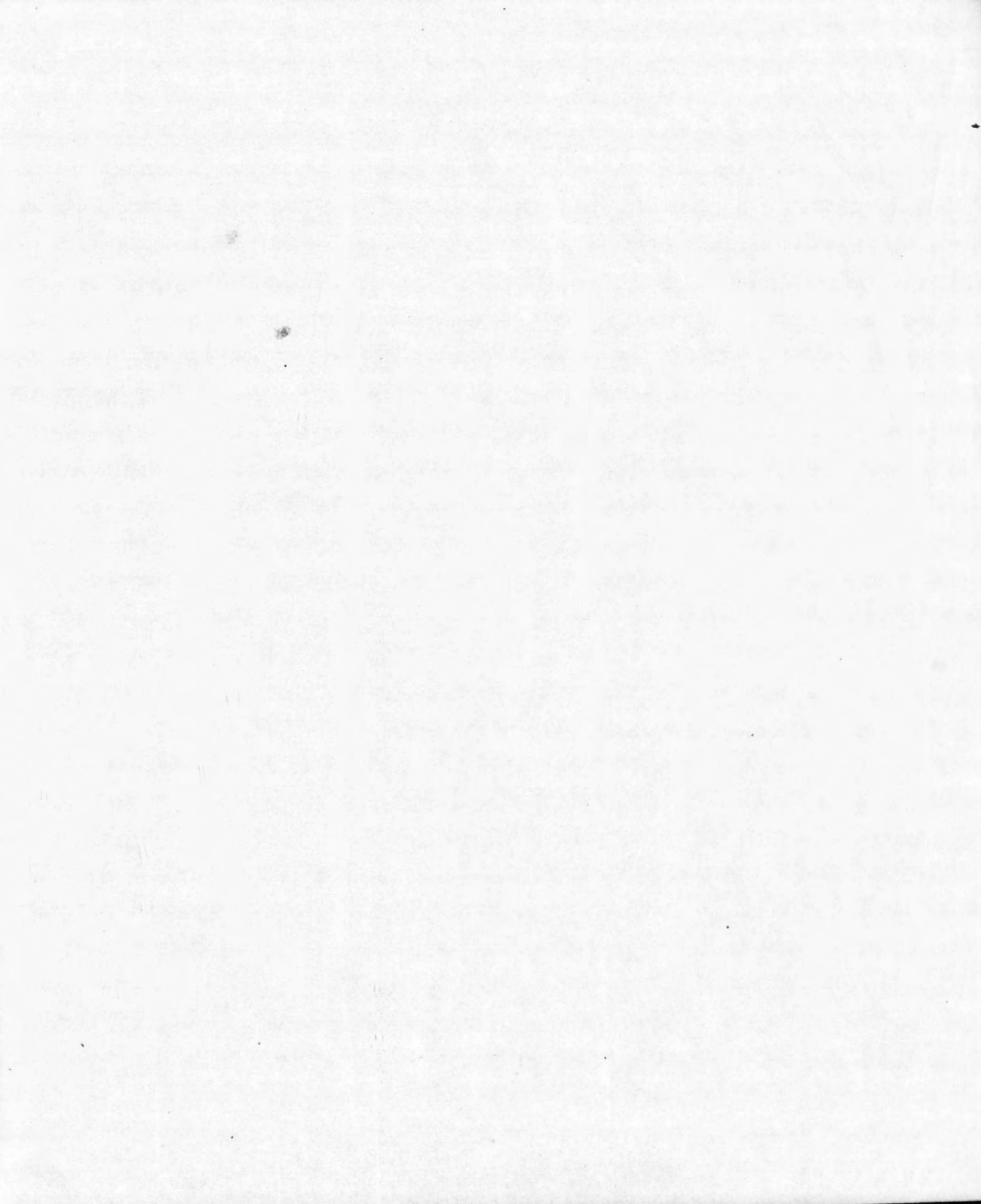
The following stamps are also in the list. The value of the stamps is as follows:

10c	10c	10c	10c
15c	15c	15c	15c
20c	20c	20c	20c
25c	25c	25c	25c

The following stamps are also in the list. The value of the stamps is as follows:

10c	10c	10c	10c
15c	15c	15c	15c
20c	20c	20c	20c
25c	25c	25c	25c

The following stamps are also in the list. The value of the stamps is as follows:





Bibliotheca Lindsiana.

PHILATELIC SECTION.