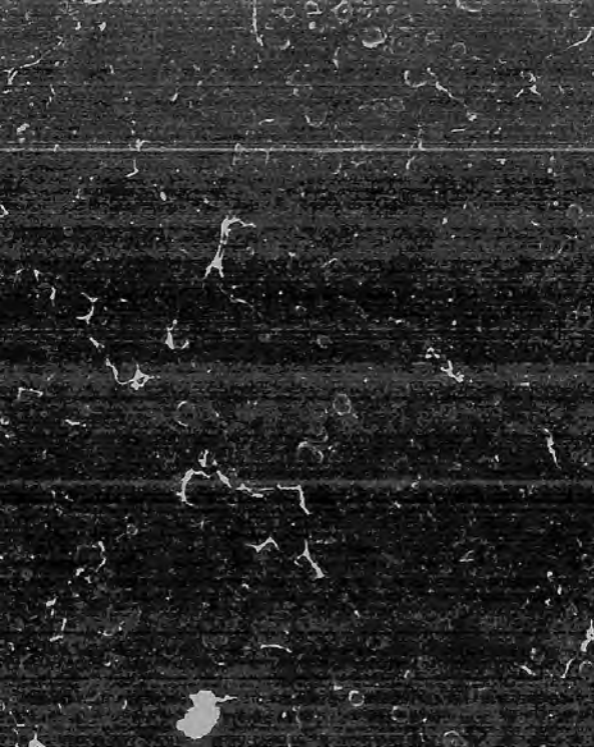


Bibliotheca Lindesiana

PHILATELIC SECTION.





Antigua.



Turkey.



Spain, 1851.



Venetia.



Italy.



Lübeck.



Sicily.



Berne.



Hongkong.



Saxony.



Prussia.



Bremen.



Western Australia.



Jamaica.



Java.



Bremen.



Finland.



Saxony.



Rome.



Argentine Confederation.



Baden.



Langton's Pony Express.



Württemberg.



Sandwich Islands.



Mobile.



French Essay.



Costa Rica.



Denmark.



British Essay.



British Guiana.



Denmark.



Sandwich Islands.



Tuscany.



Modena.



United States.



Italy.



Geneva.



Nicaragua.



Portugal.



United States.



Spain.



Hamburg.



Montevideo.



New Orleans.



Russia.



French Colony.



New Granada.



Nashville.



Brunswick.



Italy.



Berne.



Hongkong.



Finland.



Saxony.

5 POSTAGE 5

*Bromford 1563*

OPPEN'S

POSTAGE STAMP

CATALOGUE

AND

Collector's Guide.

REVISED AND CORRECTED BY HENRY WHYMPER.

---

FOURTH EDITION.

---

LONDON:

WILLIAM STEVENS, 421, STRAND, W.C.

MDCCCLXIV.



LONDON:  
WILLIAM STEVENS, PRINTER, 37, BELL YARD,  
TEMPLE BAR.

## INTRODUCTION.

---

THIS Edition has been most carefully re-written and re-arranged. All fresh issues up to the present date have been added, and many old stamps (the existence of which was unknown to the former compiler) have been inserted in their proper order. Full descriptions will be found of the scarce "English Essays," and the United States "Express and Local Stamps." Two new features have been added: by placing after the list of issues an account of any forgeries that would be likely to mislead the collector; and by giving several representations of scarce, rare, or curious stamps.

In enumerating these additions, I must record my obligations to many kind friends for the assistance they have from time to time rendered me, most particularly to three gentlemen, each of whom have contributed very admirable works to Postage Stamp Literature.

Dr. Gray gave his consent to my extracting, either

from his book or magazine articles, any information I might require; from this source I have taken the "English Essays."

The American Locals are mostly copied, with the permission of Mr. Mount Brown, from his Catalogue, and Mr. Edward Pemberton has allowed me to use his descriptions of Forged Stamps; the same gentleman also supplied me with several particulars and accounts of stamps not before catalogued.

My mentioning these names is sufficient to vouch for the accuracy of the last-mentioned items. I believe my own name is not altogether unknown to Stamp Collectors: it must answer for the remainder. I shall esteem it a favour if, when omission or inaccuracy be noticed, a communication of the same be forwarded to me.

HENRY WHYMPER.

BURTON-ON-TRENT,  
*December, 1863.*



# CONTENTS.

## EUROPE.

PAGE

Austria . . . . .	1
Baden . . . . .	4
Bavaria . . . . .	5
Belgium . . . . .	6
Bremen . . . . .	7
Brunswick . . . . .	8
Danubian Principalities (Moldavia and Wallachia) . . . . .	9
Denmark . . . . .	9
France . . . . .	11
Great Britain and Ireland . . . . .	13
Greece . . . . .	18
Hamburg, Free City of . . . . .	18
Hanover . . . . .	19
Holland . . . . .	21
Italy . . . . .	21
Lübeck . . . . .	23
Luxembourg . . . . .	23
Malta, <i>vide</i> Great Britain . . . . .	23
Mecklenburg-Schwerin . . . . .	24
Mecklenburg-Strelitz, <i>vide</i> Thurn and Taxis . . . . .	24
Modena, <i>vide</i> Italy . . . . .	24
Norway, <i>vide</i> Sweden . . . . .	25

	PAGE
Oldenburg, Grand Duchy . . . . .	26
Papal States . . . . .	27
Parma, <i>vide</i> Italy . . . . .	27
Portugal . . . . .	28
Prussia . . . . .	29
Romagna, <i>vide</i> Italy . . . . .	31
Russia . . . . .	31
Saxony . . . . .	33
Spain . . . . .	34
Sweden . . . . .	37
Switzerland . . . . .	38
Thurn and Taxis—Postal Convention. <i>a.</i> Northern States . . . . .	41
<i>b.</i> Southern States . . . . .	42
Turkey . . . . .	43
Tuscany, <i>vide</i> Italy . . . . .	43
Two Sicilies, <i>vide</i> Italy . . . . .	44
Württemberg . . . . .	45

---

### ASIA.

Ceylon . . . . .	46
East Indies . . . . .	46
Hongkong . . . . .	47

---

### AFRICA.

Cape of Good Hope . . . . .	48
St. Helena . . . . .	48
Sierra Leone . . . . .	48
Liberia . . . . .	49
Mauritius . . . . .	49
Natal . . . . .	50

## NORTH AMERICA.

	PAGE
British Columbia and Vancouver's Island . . . . .	51
Canada . . . . .	51
Confederate States . . . . .	52
New Brunswick . . . . .	52
Newfoundland . . . . .	53
Nova Scotia . . . . .	53
Prince Edward's Island . . . . .	54
United States of North America . . . . .	54

## CENTRAL AMERICA.

Costa Rica . . . . .	65
Mexico . . . . .	65
Nicaragua . . . . .	66

## SOUTH AMERICA.

Argentine Confederation . . . . .	66
Brazil . . . . .	67
British Guiana . . . . .	68
Buenos Ayres . . . . .	69
Chili . . . . .	69
Corrientes . . . . .	70
Montevideo . . . . .	70
New Granada . . . . .	70
Pacific Ocean Steam Navigation Company . . . . .	71
Paraguay . . . . .	72
Peru . . . . .	72
Venezuela . . . . .	72

## WEST INDIES.

	PAGE
Antigua . . . . .	73
The Bahamas . . . . .	73
Barbados . . . . .	74
Grenada . . . . .	74
Jamaica . . . . .	74
Nevis . . . . .	75
St. Lucia . . . . .	75
St. Vincent . . . . .	75
Trinidad . . . . .	75

---

 AUSTRALASIA.

Australia . . . . .	76
New South Wales . . . . .	76
New Zealand . . . . .	77
Queensland . . . . .	77
Sandwich Islands . . . . .	78
South Australia . . . . .	78
Tasmania, or Van Diemen's Land . . . . .	79
Victoria . . . . .	79
West Australia . . . . .	80

# POSTAGE STAMP CATALOGUE

AND

## Collector's Guide.

---

### EUROPE.

---

#### AUSTRIA.

##### ISSUE OF 1850.

Arms (double-headed eagle, crowned) on shield; foliage at side, and crown on top. Yellow, 1 kreuzer. Black, 2 kr. Red, 3 kr. Brown, 6 kr. Blue, 9 kr.

##### ISSUE OF 1858.

Embossed profile of Emperor to left; ornamental work round, different in each stamp. Yellow or orange, 2 kr. Black or green, 3 kr. (with numbers in corners). Vermilion, 5 kr. Light brown, 10 kr. Blue, 15 kr. (with numbers in upper corners).

##### ISSUE OF 1861.

Oval: similar, to right, in frame composed of engine-turned lines; "Kreuzer" at top; and figure denoting value at bottom, in small oval. Pale yellow, 2 kr. Pale green, 3 kr. Red, 5 kr. Brown, 10 kr. Blue, 15 kr.

## ISSUE OF 1863.

Oval: embossed double-headed eagle, crowned, in frame similar to 1861 issue. Pale yellow, 2 kr. Pale green, 3 kr. Rose, 5 kr. Blue, 10 kr. Light brown, 15 kr.

## ENVELOPES.

## ISSUE OF 1861.

Oval: embossed, similar to adhesive 1861 issue. Pale green, 3 kr. Red, 5 kr. Brown, 10 kr. Blue, 15 kr. Pale yellow, 20 kr. Dark brown, 25 kr. Violet, 30 kr. Light brown, 35 kr.

## ISSUE OF 1863.

Oval: embossed, similar to adhesive 1863 issue. Pale green, 3 kr. Rose, 5 kr. Blue, 10 kr. Light brown, 15 kr. Violet, 25 kr.

## NEWSPAPER STAMPS.

## ISSUE OF 1857.

*Inland Postage.* Square: profile of Mercury to left, in square frame, inscribed "K. K. Zeitungs post Stämpel." Blue, red, yellow.

## ISSUE OF 1858.

*Inland Postage.* Embossed profile of Emperor to left. Blue, lavender.

## ISSUE OF 1861.

*Inland Postage.* Similar to 1858; to right, instead of left. Grey, lavender.

*Foreign Postage.* Square: double-headed eagle, crowned, in square frame, inscribed "Kais. Kön. Zeitungs Stämpel;" small circle in each corner. Blue, black, 1 kr. Red, brown, green, 2 kr. Brown, red, 4 kr.

## ISSUE OF 1863.

Similar device to 1861: violet.

## AUSTRIAN ITALY (VENICE and LOMBARDY).

## ISSUE OF 1850.

Double-headed eagle, crowned; foliage at side, and crown on top. Yellow, 5 centes. Black, 10 c. Red, 15 c. Brown, 30 c. Blue, 45 c.

## ISSUE OF 1858.

Embossed profile of Emperor to left; ornamental work round, different in each stamp. Yellow, 2 soldi. Black, 3 s. (with numbers in corners). Vermilion, 5 s. Brown, 10 s. Blue, 15 s. (with numbers in upper corners).

## VENETIA ALONE.

## ISSUE OF 1861.

Oval: similar to 1858 issue. Red, 5 soldi.

## ISSUE OF 1862.

Similar to 1858 issue, to right. Brown, 10 s. Blue, 15 s.  
Similar to 1858 issue, to left. Green, 3 s.

## ISSUE OF 1863.

Oval: embossed double-headed eagle, in frame composed of engine-turned lines. "Soldi" above; and figure denoting value at bottom, in oval. Pale yellow, 2 s. Pale green, 3 s. Rose, 5 s. Blue, 10 s. Light brown, 15 s.

## ENVELOPES.

## ISSUE OF 1861.

Oval: embossed profile of Emperor to right; figure denoting value at bottom, in small oval. Pale green, 3 s. Red, 5 s. Brown, 10 s. Blue, 15 s. Yellow, 20 s. Dark brown, 25 s. Violet, 30 s. Light brown, 35 s.

## ISSUE OF 1863.

Oval: embossed, similar to adhesive 1863 issue. Pale green, 3 s. Rose, 5 s. Blue, 10 s. Light brown, 15 s. Violet, 25 s.

---

## BADEN.

## ISSUE OF 1850.

Square: figure denoting number of kreuzers in circle in centre; inscribed "Baden" above; date (6th April, 1850) on right side; black printing on coloured paper. Buff, white, 1 kreuzer. Green, blue, yellow, 3 kr. Yellow, green, 6 kr. Rose, 9 kr.

## ISSUE OF 1860.

Square: coat-of-arms, with supporters, on tinted ground, composed of fine horizontal lines; inscribed "Baden" at top; "Freimarke, Postverein," at sides. Black, 1 kr. Blue, 3 kr. Yellow, 6 kr. Rose, 9 kr.

## ISSUE OF 1862.

Square: similar to 1860 issue; some on tinted, and some on white ground. Pink, 3 kr. (white). Blue, 6 kr. (tinted). Brown, 9 kr. (tinted). Green, 18 kr. (white). Yellow, 30 kr. (white).

## ENVELOPES.

## ISSUE OF 1857.

Oval: embossed profile of Grand Duke to right; value above, in words, and in figure in oval at bottom; inscription printed in small type, in yellow, to left of stamp; patterns of frame different in each stamp. Blue, 3 kr. Yellow, 6 kr. Rose, 9 kr. Brown, 12 kr. Red, 18 kr.



## ISSUE OF 1862.

Oval: embossed, similar to 1857 issue; inscription to right of stamp. Pink, 3 kr. Blue, 6 kr. Yellowish brown, 9 kr.

## STAMPS FOR UNPAID LETTERS.

Square: figure denoting number of kreuzers, with ornamental work on inside of frame; printed in black on yellow paper; "Land Poste" above, and "Porto-Marke" at bottom. 1 kr. 3 kr. 12 kr.

## B A V A R I A.

## ISSUE OF 1849.

Square: figure 1, denoting value in kreuzer, in square frame, inscribed "Bayern Franco;" black printing on white paper. 1 kreuzer.

## ISSUE OF 1851.

Square: large figure denoting value in circle in centre, and small figure in each corner; same inscription as 1849 issue; silk thread runs perpendicularly down the stamp. Rose, 1 kr. Blue, 3 kr. Brown, 6 kr. Green, 9 kr. Red, 12 kr. Yellow, 18 kr.

## ISSUE OF 1862.

Square: similar in every respect, except the changes in colour. Yellow, 1 kr. Rose, 3 kr. Blue, 6 kr. Stone, 9 kr. Green, 12 kr. Vermilion, 18 kr.

## STAMP FOR UNPAID LETTERS.

## ISSUE OF 1862.

Figure 3, denoting value in kreuzers; frame inscribed "Bayer Post-tax" at top, and "Von Empfänger Zahlbar" at bottom. Black on white, 3 kr.

## ESSAYS.

Similar to 1862 issue. Black, 3 kr., 12 kr.

## FORGERY.

ISSUE OF 1851.

Green, 9 kr., changed to pale lemon.

## B E L G I U M .

ISSUE OF 1849.

Portrait of King Leopold; "Postes" at top, and value in words at bottom, printed in white letters. Figures denoting value in circles in upper corners. Dirty brown, 10 centimes. Blue, 20 c.

ISSUE OF 1850.

Similar portrait, in oval frame; "Postes" at top in white letters; value in words at bottom in coloured letters. Dirty brown, 10 c. Blue, 20 c. Red, 40 c.

ISSUE OF 1860.

Exactly similar to 1850 issue. Green, 1 c.

## ESSAYS.

ISSUE OF 1850.

Similar to 1850 issue. Blue, yellow, 10 c. Black, 40 c.

ISSUE OF 1862.

Embossed profile of King to left, crowned with laurels. Grey, 10 c.

## B R E M E N .

## ISSUE OF 1855.

*City only.* Arms (key in shield), with crown, large figure denoting value on each side of shield, and small figures in each corner. Black on slate-coloured paper, 3 grote.

## ISSUE OF 1855.

Key in oval frame; Roman figure denoting value in lower corners. Green, 5 s. gr.

Key on shield, crowned; figure in oval frame on each side; "Francomarke" at top; black printing on coloured paper. Pink, 5 gr. Yellow, 7 gr.

## ISSUE OF 1861.

Key in oval frame, with wavy border; figures denoting value in corners. Black on white, 10 gr.

## ISSUE OF 1863.

Key in oval frame, surrounded by rays; figures denoting value in corners. Orange, 2 gr.

## E N V E L O P E .

*City only.* Oval: arms, crown inscribed "Stadt-post-amt, Bremen," with "Franco" on the lower left-hand corner of envelope, on white or blue paper. (Stamped by hand.)

## F O R G E R I E S .

## ISSUE OF 1855.

Pink, 5 gr. (changed to white). Yellow, 7 gr. (changed to pearl-grey).

## BRUNSWICK.

## ISSUE OF 1852.

Oblong: arms (horse and crown); figures denoting value in oval on each side; curved label at top, inscribed "Braunschweig," and at bottom value in words. Rose, 1 silbergroschen. Blue, 2 s. gr. Red, 3 s. gr.

## ISSUE OF 1854.

Oblong: similar to 1852 issue, but printed in black on coloured paper. Brown,  $\frac{1}{4}$  silbergroschen (3 pfennige). White,  $\frac{1}{3}$  s. gr. (4 pf.). Orange, 1 s. gr. Dark blue, 2 s. gr. Pink, sometimes a light brown tint, 3 s. gr.

## ISSUE OF 1860.

Square: divided into quarters, each quarter forming a separate stamp, and having a crown over,  $\frac{1}{4}$  gute groschen. Brown, 3 pf.

## ISSUE OF 1862.

Oblong: similar to 1852 issue. Dark pink, 3 s. gr. Black, on green paper,  $\frac{1}{2}$  groschen.

## ENVELOPES.

*City only.* Circular: inscribed "St. P. Fr.;" hand-stamped. Reddish brown, value not indicated.

## ISSUE OF 1860.

Oval: arms (horse and crown); value in words at top, and figure in oval at bottom; patterns of frame of each stamp different; inscription printed in small type in blue, to left. Yellow, 1 s. gr. Blue, 2 s. gr. Pink, 3 s. gr.

## DANUBIAN PRINCIPALITIES.

## MOLDAVIA.

## ISSUE OF 1854.

Circular : woodcut, bull's head and horn ; black printing on coloured paper. Green, 54 paras. Blue, 81 p. Rose, 108 p.

Similar with "Porto Scissors." Blue, 40 p. Red 80 p.

## PRINCIPALITIES.

## ISSUE OF 1862.

Bull's head, horn, and double-headed eagle, inscribed with "Franco Scissors," and value. Blue, 30 p.

## NEWSPAPER STAMPS.

## ISSUE OF 1862.

Similar to 1854 issue, but inscribed "Porto Gazettei." Black on white, 5 p.

Similar to 1862 issue, but inscribed "Franco Gazettei." Yellow, 3 p. Red, 6 p.

DENMARK (including SCHLESWIG-HOLSTEIN  
and COLONIES).

## ISSUE OF 1851.

Square : crown over crossed sceptre and sword, enclosed in wreath ; angles between wreath and outer frame granulated ; inscribed "Kongeligt Post Frimærke ; Fire R. B. S. ;" Mercury's staff on top label, and post-horn in each corner ; angles composed of wavy lines. Brown, 4 R. B. S.

## ISSUE OF 1852.

Square: figure denoting value in circular frame, inscribed "K. G. L. Post Frimærke," with crown and post-horn. Blue, 2 rigsbank-skilling.

## ISSUE OF 1860.

Square: crown over crossed sceptre, and sword enclosed in wreath; angles between wreath and outer frame granulated; inscribed "K. G. L. Post F. R. M.;" Mercury's staff on each label, and post-horn in each corner. Blue, 2 skilling. Brown, 4 sk. Green, 8 sk. Lilac, 16 sk.

Similar to 1860; angles composed of wavy lines. Brown, 4 sk. Green, 8 sk.

## ESSAYS.

Profile in circle; brown printing on a ground composed of diagonal blue lines. 4 R. B. S. ( $1\frac{1}{4}$  sch.), Mercury to left. 8 R. B. S. ( $2\frac{1}{2}$  sch.), King to right.

## FORGERIES OF ESSAYS.

Similar to Essays: the differences are that, in the true stamp, the wavy border which contains the inscription touches the outer line in eight places; in the forgery it does not touch at all; and in the true the bottom of neck (of King or Mercury) is turned up: it is not so in the forgery.

---

 SCHLESWIG-HOLSTEIN.

ISSUED IN 1848

By Provisional Government. Embossed arms in disk, on double-headed eagle; "S. H." in top, and figures denoting value in bottom corners. Blue, 1 schilling. Rose, blue, 2 sch.

## COLONIES (ST. THOMAS and ST. CROSS).

## ISSUE OF 1860.

Square: similar to 1860 issue. Red, 3 cents (angles granulated). Red, brown, 3 c. (angles, wavy lines).

## FRANCE (including COLONIES).

## REPUBLIC.

## ISSUES OF 1849-50.

Profile of Liberty to left, crowned with wreath composed of ears of wheat and grapes; in circle, printed on a pale tinted paper. Brown, 10 centimes. Green, 15 c. Black, 20 c. Blue, 25 c. Orange, 40 c. Dark rose, light brown, 1 franc.

## ISSUE OF 1852.

Profile of President Napoleon to left in circle. Brown, 10 c. Blue, 25 c.

## EMPIRE.

## ISSUES OF 1853-54, 1860.

Profile of Emperor to left in circle; "Empire Franc." at top, and "Postes" at bottom, with value; some on white, and some on tinted paper. Dark sap-green, 1 c. Green, 5 c. Light brown, 10 c. Blue, 20 c. Blue, 25 c. Orange, 40 c. Rose, sometimes lake, 80 c. Carmine, 1 franc.

## ISSUE OF 1862.

Profile of Emperor to left in circle, crowned with laurel wreath; "Empire Français" at top. Chocolate, 2 c.

## ISSUE OF 1863.

Similar to 1862 issue. Light slate, 4 c.

## STAMPS FOR UNPAID LETTERS.

Figure denoting value in centimes; inscribed "Chiffre postes taxe," and "à percevoir." Black on white, 10 c. (square). 10 c. (oblong). 15 c. (square).

## ESSAYS.

## ISSUES OF 1849-50

Are found in a variety of colours.

## ISSUE OF 1853.

Similar to 1853 issue. Green, 1 franc.

## ISSUE OF 1862.

Stamp divided into two portions; Emperor's head to left in small circle; inscribed "Empire Franc.;" "Coller cette partie supérieure" on top half; and "Laisser flotter cette partie inférieure," "Timb. Poste," at bottom. Blue, 20 c.

## COLONIES.

## ISSUE OF 1860.

Profile of Emperor to left, in octagon frame; inscribed "Nouvelle Calédonie." Grey, 10 c.

## ISSUE OF 1862.

Inscribed "Ile de la Réunion," 1862; black printing on blue paper, 10 c., 15 c., 20 c., 30 c.

## ISSUES OF 1859-62-63.

Square: eagle, under crown in circle; inscribed "Colonies de l'Empire Français." Sap-green, 1 c. Green, 5 c. Light brown, 10 c. Blue, 20 c. Dark orange, 40 c. Rose, 80 c.



## GREAT BRITAIN.

## ISSUE OF 1840.

Profile of Queen to left; postage at top; value in words at bottom; letters in bottom corners; black with "V. R." in top corners. Brown on green paper, brown, red, 1d. Blue, blue on blue paper, 2d. Blue, with white line on top of value, and at bottom of postage, 2d. Blue, with letters in each corner and lines, 2d.

Octagon: embossed profile of Queen to left; thread running perpendicularly through the stamp. Brown, 10d.

Profile of Queen to left. Rose, 4d. (in circular frame). Lilac, 6d. (in circular frame). Green, 1s. (oval frame).

Profile of Queen to left, in various-shaped frames; letters in each corner. Pink, 3d. (trifoliate). Red, 4d. (circular). Lilac, 6d. (circular). Yellowish brown, 9d. (wavy circle). Green, 1s. (oval).

## ENVELOPES.

## ISSUE OF 1840.

Design printed over sheet (leaving space for address); Britannia centre figure, surrounded by foreigners, &c. Designed by the late W. Mulready, R.A. Black on white, 1d. Blue on white, 2d.

Similar, printed on envelope. Black, 1d. Blue, 2d.

Embossed: profile of Queen to left, in various shapes; sometimes on white, blue, or yellow paper; inscribed "Postage," and the value. Brown, pink, 1d. (oval). Blue, 2d. (oval). Rose, 3d. (trifoliate). Red, 4d. (circular). Lilac, 6d. (octagon). Green, 1s. (octagon).

Embossed: similar to above, with date of issue. Brown, pink, 1d. (oval). Blue, 2d. (oval). Lilac, 6d. (octagon). Green, 1s. (octagon).

## ISSUE OF 1863.

Oval : rose, shamrock, and thistle, in garter ; inscribed "Board of Trade ;" printed in blue on blue paper.

## NEWSPAPERS.

Oval : rose, shamrock, and thistle, under crown, surrounded by drapery ; "Dieu et mon Droit" below ; inscribed "One Penny Newspaper," and name of paper it is stamped on. Red, 1d

Hemispherical : rose, shamrock, and thistle, under crown ; inscribed "The Times Newspaper," and value in words. Black, 1½d.

## ESSAYS.—ADHESIVE STAMPS.

## ISSUES OF 1840

Are found in a great variety of colours.

## ISSUES OF 1838-39.

Profile of Queen to left, in trifoliate frame. Lake, 1½d.

Profile of Queen to left, in scroll-work frame. Rose, 3d.

Large rectangular: star in centre ; inscribed "Penny Post," surrounded by a blue oval, and perpendicular red lines.

Number in oval ; inscribed "Post Office," with a second oval frame, inscribed "One Penny, half-ounce." Red and blue, and red and green.

Square : "½ OZ. 1D." on a small, red, circular disk, in oval black disk, surrounded by three close concentric engine-turned frames ; the middle one inscribed in pale letters, "Post Office, Permit," and "To carry matter not exceeding in weight" below. Printed in black on white paper, with red unequal blotches across the oval frames.

Post Office cover, with oblong centre, "V. R.," and crown,

and "London District Post, to carry not exceeding six ounces." Green, 2d.

Middle-sized label: crown in a white oval disk, surrounded by three concentric oval frames; the inner and outer with white engine-turned pattern; the middle one the narrowest; dark, inscribed "Principle suggested, Beaufort House," in white letters, all in an oblong, erect, outer frame, with "A. B. C. D." in square dark spots at the angles; and "V. R." in oval white disk at the sides, printed in blue ink.

Like the former, but printed in two colours—viz., blue, with four radiating lanceolate, and four triangular red blotches.

Small label: "1d.," italic type, in a small, white, transverse oval, surrounded by two concentric oval frames; the inner with white engine-turned lines, the outer one coloured; inscribed, in white letters, "Post paid" above; "Beaufort House" below; all in an oblong transverse outer frame. Printed in black ink, with four lanceolate, and four triangular red blotches.

## EMBOSSSED STAMPS.

1. Embossed white profile of the Queen to the right, without any tiara, and with a dependent curl behind, in two oval concentric frames, with engine-turned, white, embossed lines; the outer frame interrupted at the upper part by a white-lined label, with "Paid" in white, embossed, capital letters. Printed in red, green, blue, and other coloured inks, on a white and coloured note-paper, at the left upper corner of envelopes, and on card, and at the back of "Harwood's Envelope."

2. Like the former, but surrounded with a third outer concentric frame, and with the label on the upper part of the second or middle frame, without any letters, and dark. Printed in black ink on paper and on card.

3. A small stamp. Embossed white profile of the Queen to the left, with tiara, and without any pendent curl behind, in oval frame, with engine-turned embossed lines and outer edges, without any inscription.

4. A small stamp, like the former, but the upper half of the frame with "Postage, One Penny," inscribed in the embossed lines, in small, dark, sunken, capital letters. Blue ink on card and on paper.

5. Small stamp, like the former, but the upper half of the frame uniformly dark, without any embossed lines, and inscribed, in embossed, white, capital letters, "Postage, One Penny." Blue, brown, and red ink, on card and on paper.

6. Large stamp, like No. 3, but enclosed in a second oval frame, with white, embossed, engine-turned line; inscribed in large, white, coloured-edged, capital letters, "Postage, One Penny;" and with a spreading group of the rose, shamrock, and thistle in the middle beneath. Printed in dark or pale blue and rose-coloured ink, on paper and on card; generally surrounded by a coloured ring, showing the size of the die.

7. A large stamp, exactly like the preceding, but the outer frame interrupted at the upper half, and the plain coloured label inscribed, in smaller, white, embossed, capital letters, "Postage, One Penny." Rose-coloured ink on paper or on card, and generally surrounded with a blur of coloured ink, showing the size of the die.

8. A large stamp, exactly like the preceding, but the group of emblems below is more condensed, and the upper part of the outer frame is plain, dark coloured, without any embossed white lines; inscribed in white raised capitals, "Postage, 1d. Half-ounce." Red, blue, or brown ink, on card, or on white or coloured paper.

9. A small stamp, with embossed white profile of the Queen to the left, with a tiara, and a dependent curl behind, enclosed in an oval frame, with white, raised, engine-turned lines. Black, blue, and red ink, on paper or on card.

10. A small stamp, like the preceding, but the frame inscribed with "Postage, One Penny," in dark, sunken, thick, capital letters, as wide as the frame. Blue, brown, or red ink, on card or on paper.

11. A small stamp, like the preceding, but "Postage, One

Penny" in rather smaller and thinner, sunken, dark, capital letters. Black, blue, brown, and red ink, on card or on paper.

12. A small stamp, like the preceding, but "Postage, One Penny" in small, thick, sunken, dark, capital letters, not half the width of the frame. Blue, red, and black ink, on card or on paper.

13. A larger stamp, like the preceding, but in a double, oval, concentric frame; the outer frame with the rose, shamrock, and thistle below; the upper half dark, sunken, without any embossed lines, and inscribed, in moderate-sized, white, embossed capitals, "Postage, One Penny." Red, brown, and black ink, on card or paper.

14. A circular stamp, with a white, embossed profile of the Queen to left, in her tiara, and dependent curl behind; and of Prince Albert behind, in a circular-coloured disc, surrounded by a double linear, raised, ring-edge. Embossed on the angles of envelopes. An inscribed frame could have been added if it had come into use.

15. A large stamp, with oval disc, and a crown between "V. R." above; with "Post Office," in a curved band, rather above the centre; and "One Penny, Half Ounce," below; all enclosed in an oval, embossed, lined frame. Printed in blue ink, on card and paper.

### FORGERY.

Profile of Queen to left; postage at top; value at bottom in words; letters in bottom corners. Blue, 2d., changed to black.

## GREECE (including IONIAN ISLES).

### ISSUE OF 1861.

Profile of Mercury to right in circle; inscribed "ΕΛΛ. ΓΡΑΜΜ" at top, and value at bottom. Printed in colour on tinted paper. Brown, 1 lepton. Stone, 2 l. Green, 5 l. Red, 10 l. Blue, 20 l. Lilac on blue, 40 l. Rose, 80 l.

### ISSUE OF 1862.

Similar to 1861; printed number, denoting value in lepta, at back of. 5 l. 10 l. 20 l. 40 l. 80 l.

## IONIAN ISLES.

### ISSUE OF 1860.

Profile of Queen Victoria to left, in garter, inscribed "ΙΟΝΙΚΟΝ. ΚΡΑΤΟΣ." Value not denoted. Blue. Red. Yellow, on yellow paper.

## HAMBURG (including BERGEDORF).

### ISSUE OF 1859.

Figure, denoting value on three turrets; inscribed "Hamburg" at top; "Postmarke" at bottom, and value in words at sides. Black,  $\frac{1}{2}$  schilling. Brown, 1 s. Red, 2 s. Blue, 3 s. Green, 4 s. Orange, 7 s. Yellow, 9 s.

There are stamps bearing the names of Th. Lafrenz, C. Hamer, &c., many of which are manufactured for sale in England, and for that reason are not included in this Catalogue.

## BERGEDORF.

ISSUE OF 1861.

Square: the size of stamp increasing in proportion to value; half eagle and half towers in circle, with a letter at each corner; black printing on coloured paper. Blue, violet,  $\frac{1}{2}$  schilling. White, 1 s. Yellow,  $1\frac{1}{2}$  s. Pink, or violet printing on rose paper, 3 s. Brownish red, 4 s.

## HANOVER.

ISSUE OF 1851.

Royal arms over shield, containing figure denoting value; inscribed "Hannover" at bottom; black printing on coloured paper. Green, 1 guten groschen. Rose or pink,  $\frac{1}{3}$  thaler. Blue or lilac,  $\frac{1}{6}$  t. Yellow,  $\frac{1}{6}$  t.

ISSUE OF 1858.

Similar to 1851 issue; black printing on white paper, covered with coloured checkwork pattern. Green, 1 g. g. Lake,  $\frac{1}{3}$  t. Blue,  $\frac{1}{6}$  t. Yellow,  $\frac{1}{6}$  t. Rose, 3 pfenninge (lined oval, containing crown and figure 3, with inscription running over the top).

ISSUE OF 1859.

Similar to last stamp, without the checkwork pattern.

Profile of King to left in circle; inscribed with value at top, and "Hannover" at bottom. Rose, 1 groschen. Blue, 2 g. Orange, 3 g.

Crown and horn; "Hannover" at top; value at bottom. Black printing on white paper,  $\frac{1}{2}$  g.

## ISSUE OF 1861.

Profile of King to left, in circle; inscribed with value at top, and "Hannover" at bottom. Stone, 3 g. Green, 10 g.

## ENVELOPES.

## ISSUE OF 1857.

Oval: profile of King to left; inscribed "Hannover" at top, and figure denoting value at bottom. Green, 1 g. gr. Rose, 1 silbergroschen. Blue, 2 s. Yellow, 3 s.

## ISSUE OF 1859.

Oval: similar to 1857 issue; figures at sides, denoting value; inscription to left of stamp. Rose, 1 groschen. Blue, 2 g. Yellow, 3 g.

## ISSUE OF 1862.

Oval: similar to 1859 issue; inscription to right of stamp. Rose; 1 g. Blue, 2 g. Brown, 3 g.

## STAMPS FOR TOWN POSTAGE ONLY.

## ISSUE OF 1858.

Circular: embossed trefoil and post-horn, with embossed letters, "Bestellgeld Frei." Green printing on yellow paper.

## ISSUE OF 1862.

Circular: embossed horse, with embossed inscription, same as 1858 issue. Green printing on yellow paper.

## FORGERY.

## ISSUE OF 1851.

Green, 1 guten groschen, changed to blue.



## HOLLAND (including DUTCH GUIANA).

### ISSUE OF 1852.

Profile of King to right, in ornamented oval frame; inscribed "Post Zegel" at top, and value in bottom corners. Blue, 5 cents. Red, red on rose paper, 10 c. Orange, 15 c.

## COLONY.

### ISSUE OF 1861.

Crown in wreath, with four laurel leaves; inscribed same as 1852 issue; "1 . 8 . 6 . 1 ." in corners; black printing on coloured paper. Lilac, lavender, rose, 10 c.

---

## ITALY (including SARDINIA and NAPLES SINCE 1861).

### ISSUE OF 1851.

Embossed profile of King to right, in oval frame; inscribed, "Franco Bollo Poste" in white. Black, 5 cents. Blue, 20 c. Pink, 40 c.

### ISSUE OF 1852.

Similar to 1851 issue; embossed on coloured paper. Green, blue, 5 c. Brown, 10 c. Blue, 20 c. Red, 40 c.

### ISSUE OF 1855.

Similar to 1851 issue; profile and oval frame, only embossed; printed on coloured paper. Green, 5 c. Brown, 10 c. Green, blue, 20 c. Red, 40 c.

## ISSUE OF 1856.

Similar to 1855 issue; inscription in white letters. Green, 5 c. Brown, 10 c. Blue, 20 c. Red, 40 c. Yellow, 80 c. Bronze, 3 lire.

## ISSUE OF 1863.

Similar to 1856 issue. Blue, 15 c.

Profile of King to left, in lined oval frame; value in small circles in corners. Blue, 15 c.

## NEWSPAPER STAMPS.

## ISSUE OF 1861.

Embossed figure, denoting value, in oval frame; inscribed "Franco bollo Giornali Stampe." Black, 1 and 2 c. Brown, 2 c.

## STAMP FOR UNPAID LETTERS.

## ISSUE OF 1863.

Oval: label, bearing inscription "Segna Tassa," and value. Yellow, 10 c.

## ESSAY.

## ISSUE OF 1863.

Profile of King to left, on shaded ground; oval frame, containing inscription, "Poste Italiane;" figures in circles, in corners; steel engraving. Black, 2 centesimi.

## NAPLES, SINCE 1861.

## ISSUE OF 1861.

Embossed: profile of King to right, in oval frame; inscribed "Franco Bollo Postale;" small cross in each corner. Green,  $\frac{1}{2}$  tornese. Brown,  $\frac{1}{2}$  grano. Black, 1 g. Blue, 2 g. Red, lilac, 5 g. Brown, 10 g. Yellow, 20 g. Grey, 50 g.

## LÜBECK.

ISSUE OF 1859.

Double-headed eagle, on dotted ground; large figure denoting value in each corner on plain ground. Lilac,  $\frac{1}{2}$  schilling. Orange, 1 s. Brown, 2 s. Red,  $2\frac{1}{2}$  s. Black, green, 4 s.

LOCAL STAMPS.

Circular: post-horn under shield; black on white.

## LUXEMBOURG.

ISSUE OF 1852.

Profile of Grand Duke to left, in oval frame; figures denoting value in top corners. Black, 10 centimes. Red, black, 1 silbergroschen.

ISSUE OF 1859.

Lion and crown in oval frame; figures denoting value on lower sides. Blue, 10 c. Rose,  $12\frac{1}{2}$  c. Brown, 25 c. Different shades of violet, 30 c. Green,  $37\frac{1}{2}$  c. Bright red, 40 c.

Similar to above in circular frame. Orange, 1 c. Black, 2 c. Yellow, 4 c.

## MALTA.

ISSUE OF 1861.

Profile of Queen Victoria to left, in octagonal frame. Yellowish brown,  $\frac{1}{2}$ d.

When stamps of higher prices are required, English stamps are used, with "Malta" printed across them.

## MECKLENBURG-SCHWERIN.

### ISSUE OF 1860.

Very small square; crowned bull's head on dotted ground; figures in corners denoting value. Red,  $\frac{1}{4}$  schilling.

Large square; crowned bull's head on shield, surmounted by crown; figures in corners denoting value. Yellow, 3 s. Blue, 5 s.

### ENVELOPES.

#### ISSUE OF 1860.

Oval: embossed; crowned bull's head on shield, surmounted by crown, on plain coloured ground; value at top in words, and figures in oval at bottom. Orange, 1 s. Green,  $1\frac{1}{2}$  s. Yellow, 3 s. Blue, 5 s.

## M O D E N A.

Eagle under crown between two laurel branches; inscribed "Poste Estensi" at top; value at bottom; black printing on coloured paper. Green, 5 centimes. Rose, purple, violet, 10 c. Yellow, violet, 15 c. Yellow, 25 c. Blue, 40 c. Blue, 49 c. White, 1 lira.

Similar to above, with B. G. by value. Purple, 9 c.

Similar to above. Yellow, 15 c. Blue, 40 c.

#### ISSUE OF 1859.

Cross, with crown and collar, between two laurel branches; inscribed "Provincie Modonensi." Green, 5 c. Brown, 15 c. Lilac, 20 c. Rose, 40 c. Orange, 80 c. (Issued by the Provincial Government, and only used for a few months).

## NEWSPAPER STAMPS.

Square: eagle under crown in circle; inscribed "Tassa Gazetta." Black, 10 c.

## FORGERIES.

## FIRST ISSUE.

In most forgeries the crown touches the eagle's head: it does not in the true stamp. In others, the ornaments in the border touch the enclosing lines in two or three places: they do not touch in the true stamps.

## NORWAY.

## ISSUE OF 1855.

Lion holding battle-axe, with crown in circle; inscribed "Frimærke." Blue, 4 skilling.

## ISSUE OF 1856.

Profile of King to left, in circle; inscribed "Norge" at top; "Frimærke" at each side; value at bottom. Yellow, 2 sk. Lilac, 3 sk. Blue, 4 sk. Red, 8 sk.

## FORGERY.

Lilac, 3 sk., changed to a dull purple.

## OLDENBURG.

### ISSUE OF 1852.

Value denoted on shield, under ducal arms; value on each side, and "Oldenburg" at bottom; black printing on coloured paper. Green,  $\frac{1}{3}$  silbergroschen. Blue,  $\frac{1}{30}$  thaler. Light rose,  $\frac{1}{10}$  t. Yellow,  $\frac{1}{10}$  t.

### ISSUE OF 1858.

Ducal arms under crown, in oval frame; inscribed "Oldenburg" at top; value at bottom; black printing on coloured paper. Green,  $\frac{1}{3}$  groschen, Blue, 1 gr. Rose, 2 gr. Yellow, 3 gr.

### ISSUE OF 1860.

Similar to 1858 issue; but not black printing. Orange,  $\frac{1}{4}$  gr. Green,  $\frac{1}{3}$  gr. Brown,  $\frac{1}{4}$  gr. Blue, 1 gr. Red, 2 gr. Lemon, 3 gr.

(The ornamental work on the last two issues differs in different stamps.)

### ISSUE OF 1862.

Oval: embossed; ducal arms under crown; inscribed "Oldenburg" at top; value at bottom, and in ovals at sides. Green,  $\frac{1}{3}$  gr. Orange,  $\frac{1}{2}$  gr. Rose, 1 gr. Blue, 2 gr. Brownish yellow, 3 gr.

## ENVELOPES.

### ISSUE OF 1861.

Oval: embossed; ducal arms under crown; inscribed "Oldenburg" at top; value at bottom, and in ovals at sides; inscription printed on envelope to left of stamp in small blue letters. Brown,  $\frac{1}{2}$  gr. Blue, 1 gr. Rose, 2 gr. Yellow, 3 gr.

## ISSUE OF 1862.

Oval: embossed; similar to above; inscription to right of stamp. Orange,  $\frac{1}{2}$  gr. Rose, 1 gr. Blue, 2 gr. Brown, 3 gr.

## FORGERIES.

Green,  $\frac{1}{2}$  silbergroschen, of 1852 and 1858 issues, changed to yellow.

## PAPAL STATES.

Crossed keys, surmounted by Tiara; inscribed "Franco Bollo Postale;" printed in black on coloured paper; shapes of stamps different.

Oval: Purple, violet, slate,  $\frac{1}{2}$  (mezzo) baj.

Oval, truncated ends. Green, 1 baj.

Oblong. Greenish yellow, 2 baj. (This stamp differs in size.)

Oval, truncated ends. Light brown, 3 baj.

Circular. Yellow ochre, 4 baj.

Rectangular. Rose, 5 baj.

Octagonal. Neutral tint, 6 baj.

Octagonal. Blue, 7 baj.

Octagonal, concave sides. White, 8 baj.

Oblong, similar to above; printed in colour. Blue, 50 baj. Red, 1 scudo.

## PARMA.

Fleur-de-lis, surmounted by crown in circle; inscribed "Stati Parm," and value. Yellow, 5 centes. Scarlet, 15 c. Red, brown, 25 c.

Similar to above; black printing on coloured paper. Yellow, 5 c. Pink, white, 10 c. Rose, 15 c. Purple, 25 c. Blue, 40 c.

#### ISSUE OF 1858.

Fleur-de-lis, in oval in shield, crowned with laurel branches at sides; inscribed "Duc di Parma Piac Ecc," and value. Pink, 15 c. Brown, 25 c. Blue, 40 c.

### PROVISIONAL GOVERNMENT.

#### ISSUE OF 1859.

Octagonal, concave sides; figure, denoting value, in centre; type-printed; inscribed "Stati Parmensi." Pale green, dark green, 5 centesimi. Brown, 10 c. Blue, 20 c. Red, 40 c. Orange, 80 c.

### FOR TOWN POSTAGE.

#### ISSUE OF 1859.

Similar to 1859 issue; printed in black, on coloured paper. Carmine, 6 c. Blue, 9 c.

## PORTUGAL.

Embossed; profile of Queen Maria II. to left, in frame; various shapes. Brown, 5 reis. (octagon). Blue, 25 r. (oblong sinuous). Green, 50 r. (octagon). Lilac, 100 r. (oblong).

#### ISSUE OF 1858.

Embossed; profile of King Pedro V. to right, in frame; various shapes. Brown, 5 r. (octagon). Rose, blue, 25 r. (oblong sinuous). Green, 50 r. (octagon). Lilac, 100 r. (oblong).



## ISSUE OF 1862.

Embossed; profile of King Louis to left, in frame; various shapes. Brown, 5 r. (octagon). Rose, 25 r. (oblong). Green, 50 r. (octagon). Lilac, 100 r. (oblong).

## ISSUE OF 1863.

Similar to 1862 issue. Yellow, 10 r. (octagon).

## P R U S S I A .

## ISSUE OF 1850.

Profile of King Frederick William IV. to right, on a ground composed of crossed lines; inscribed "Freimarke." Green, 4 pfennige. Red, 6 pf.

Similar to above; black printing on coloured paper. Lake, 1 silbergroschen. Blue, drab, 2 s. gr. Yellow, 3 s. gr.

## ISSUE OF 1857.

Similar to 1850 issue, on plain coloured ground. Rose 1 s. gr. Blue, 2 s. gr. Orange, 3 s. gr.

## ISSUE OF 1858.

Similar to 1850 issue, with ground similar. Green, 4 pf. Dark orange,  $\frac{1}{2}$  s. gr. = 6 pf. Rose, 1 s. gr. Blue, 2 s. gr. Orange, 3 s. gr.

## ISSUE OF 1861.

Octagonal, with numbers in corners, outside stamp; crowned eagle in oval; inscribed "Preussen" at top. Green, 4 pf. Dark orange, 6 pf.

Oval: similar to above, with numbers in ovals at sides. Rose, 1 s. gr. Blue, 2 s. gr. Stone, 3 s. gr.

## ENVELOPES.

## ISSUE OF 1850.

Oval: embossed profile of King Frederick William IV. to right; value at top in words, and figure in oval at bottom; two threads running through the stamp. Rose, 1 s. Blue, 2 s. gr. Orange, 3 s. gr.

Octagon: similar to above. Brown, 4 s. gr. Lilac, 5 s. gr. Green, 6 s. gr. Red, 7 s. gr.

## ISSUE OF 1857.

Oval: similar to 1850 issue, without threads; inscription in small letters, printed to left of stamp. Rose, 1 s. gr. Blue, 2 s. gr. Orange, 3 s. gr.

## ISSUE OF 1861.

Oval: embossed crowned eagle in oval; inscribed "Preussen" at top; inscription sometimes printed over the stamp, and sometimes at side. Rose, 1 s. gr. Blue, 2 s. gr. Stone, 3 s. gr.

## STAMP FOR RETURNED LETTERS.

## ISSUE OF 1863.

Oval: bugle-horn and eagle. Red.

## FORGERIES.

Stamp for Berlin only. Square: "Stadt" at top; "Express" at bottom; figure in centre; denoting value at sides. Carmine,  $\frac{1}{2}$  s. gr. Lilac, 1 s. gr. Green, 2 s. gr.

## R O M A G N A .

ISSUE OF 1859.

Figure denoting value in centre ; inscribed "Franco Bollo Postale Romagne ;" printed with type, in black ink, on coloured paper. Pale yellow,  $\frac{1}{2}$  bajocchi. Grey, 1 b. Yellow, 2 b. Green, 3 b. Red, 4 b. Mauve, 5 b. Green, 6 b. Rose, 8 b. Pale blue, 20 b.

Discontinued in 1860.

## RUSSIA (including FINLAND and POLAND).

ISSUE OF 1858.

Embossed, double-headed eagle crowned, over two post-horns, in circle, coloured differently to the remainder of stamp ; surrounded by mantle ; surmounted by crown ; figures denoting value in corners. Brown, blue centre, 10 kopecs. Dark blue, orange centre, 20 k. Lake, green centre, 30 k.

## STAMPS FOR ST. PETERSBURG.

ISSUE OF 1854.

Circular : hand-stamped on envelope ; similar device to 1858 issue. Blue, 5 k.

ISSUE OF 1863.

Similar device to 1858 issue, on square shield ; inscribed "Mapka" at top. Black, 5 k.

## ENVELOPES.

ISSUE OF 1858.

Circular: embossed; double-headed eagle, crowned, on engine-turned ground, in inscribed circular frame, on the flap of the envelope; inscription at top, printed in colour; at bottom, embossed in white. Black, 10 k. Blue, 20 k. Rose, 30 k.

## FINLAND.

ISSUE OF 1860.

Oval: hand-stamped; lion over two post-horns; value at sides. Blue, 5 kopecs. Rose, 10 k.

ISSUE OF 1862.

Lion, with drawn scimitar on shield, surmounted by crown, in oval frame; value at top and bottom; printed on tinted paper. Blue, 5 k. Rose, 10 k.

## ENVELOPES.

Oval: hand-stamped; arms over two post-horns; value at sides. Blue, 5 k. Rose, 10 k. Black, 20 k.

ISSUE OF 1862.

Similar device to 1862 adhesive issue. Blue, 5 k. Rose, 10 k.

## POLAND.

ISSUE OF 1858.

Similar device to Russian 1858 adhesive issue; inscription only on sides of frame. Centre, lake; oval, frame, mantle, and corners, blue; remainder of stamp, red, 10 kopecs.

## ENVELOPES.

Circular: similar to Russian 1858 envelopes; black letters at top and white at bottom. Black, 10 k.

## ENVELOPE FOR WARSAW.

Circular: similar to Russian 1858 envelopes; inscribed "Poczta Miejska Warszawska." Blue, 3 k.

## SAXONY.

## ISSUE OF 1850.

Square: figure denoting value in centre; inscribed "Sachsen" at top; ornamental corners. Red, 3 pfennige.

## ISSUE OF 1851.

Profile of King Frederick Augustus to right, in oval frame; black printing on coloured paper. Grey,  $\frac{1}{2}$  neu groschen. Rose, 1 n. g. Blue green, 2 n. g. Dark blue, 2 n. g. Yellow, 3 n. g.

## ISSUE OF 1854.

Arms and crown in oval; figures at sides denoting value. Green, 3 pf.

Profile of King John to left, in oval frame; figures at sides denoting value; black printing on coloured paper. Grey,  $\frac{1}{2}$  n. g. Rose, 1 n. g. Dark blue, 2 n. g. Yellow, 3 n. g.

## ISSUE OF 1856.

Similar to 1854 issue; printed in colour. Red, 5 n. g. Blue, 10 n. g.

## ISSUE OF 1863.

Arms surmounted by crown; figures denoting value in ovals at sides and bottom of shield, and in corners. Green, 3 pf. Scarlet,  $\frac{1}{2}$  n. g.

Oval: similar to above; with minute figures indicating value above and under ovals at sides containing same figures. Rose, 1 n. g. Blue, 2 n. g. Brown, 3 n. g. Lilac, 5 n. g.

## ENVELOPES.

## ISSUE OF 1856.

Oval: embossed profile of King John to left; inscription in small letters to left of stamp; inscribed "Sachsen." Rose, 1 n. g. Blue, 2 n. g. Yellow, 3 n. g. Lilac, 5 n. g. Green, 10 n. g.

## ISSUE OF 1862.

Oval: embossed; similar to 1856 issue; inscription to right of stamp. Rose, 1 n. g. Blue, 2 n. g. Yellow, 3 n. g.

## ISSUE OF 1863.

Oval: embossed; similar to 1863 adhesive issue; inscription to left of stamp. Rose, 1 n. g. Blue, 2 n. g. Brown, 3 n. g. Lilac, 5 n. g.

## SPAIN (AND COLONIES).

## ISSUE OF 1850.

Profile of Queen, crowned, to left; date below. Black, 6 cuartos.

Profile of Queen to right, date below; black letters, white frame. Violet, 12 c. Blue, 6 reales. Green, 10 r.

Similar to last; white letters, and "Certificado" on right margin. Red, 5 r.

## ISSUE OF 1851.

Profile of Queen to right, with rows of pearls; in oval frame. Date below, inscribed "Correos Franco." Black, 6 c. Violet, 12 c. Red, 2 r.

Similar to last; inscribed "Correos Certificado." Rose, 5 r. Blue, 6 r. Green, 10 r.

## ISSUE OF 1852.

Profile of Queen to left, in circle; date indicated; inscribed "Correos Franco." Rose, 6 c. Violet, 12 c. Red, 2 r.

Similar to last; inscribed "Correos Certdo." Green, 5 r. Pale blue, 6 r.

## ISSUE OF 1853.

Profile of Queen with diadem, to right, in oval; date below. Same colours and enumeration as 1852 issue.

## ISSUE OF 1854.

Arms (lion and castle quartered) in coloured oblong shield; floral tendrils; no date; inscribed "Correos Franco." Green, 2 c.

Similar to last; inscribed "Correos Certdo." Green, 5 c. Blue, 6 c.

Arms in plain oblong shield, without tendrils; date above; inscribed "Correos Franco." Pink, 4 c. Lake, 6 c. Dark purple, 1 r. Scarlet, 2 r.

Arms in plain oblong shield, under crown; inscribed "Correos 1854" above. Orange,  $\frac{1}{2}$  onza. Rose, 1 o. Green, 4 o. Blue, 1 libra.

## ISSUE OF 1855.

Profile of Queen, with diadem, to right, in round pearly border; caduceus and anchor below; coloured printing on blue paper; wavy water-mark. Green, 2 c. Red 4 c. Blue, 1 r. Brown, 2 r.

Arms in plain oval shield, with crown and collar of golden fleece; inscribed "Correo Oficial" above. Orange,  $\frac{1}{2}$  onza. Rose, 1 o. Green, 4 o. Grey, 1 libra.

## ISSUE OF 1856.

Profile of Queen, with laurel, to right, in circle; crossed water-mark lines. Green, 2 c. Scarlet, 4 c. Blue, 1 r. Violet, 2 o.

## ISSUE OF 1857.

Similar to last, without water-mark. Green, 2 c. Rose and scarlet, on tinted paper, 4 c. Blue, 1 r. Brown, 2 r.

## ISSUE OF 1860.

Profile of Queen, with diadem, to left, in circular frame; inscribed "Correos" above. Green, 2 c. Orange, 4 c. Red, 12 c. Blue, 1 r. Brown, 19 c. Lilac, 2 r.

## ISSUE OF 1862.

Profile of Queen, with diadem, to left, in oval; lion and castle in corners; inscribed "Correos" at sides and "España" at top; sometimes printed on tinted paper. Dark blue, 2 c. Rich brown, 4. Blue, 12 c. Brown, 1 r. Rose, 19 c. Green, 2 r.

## STAMPS FOR MADRID.

Bear hugging tree, in oval, with wreath and crown; inscribed "Correo Interior" above, "Franco" below. Bronze, 1 c. 2 c. 3 c.

## CUBA, HAYTI, MANILLA, AND PORTO RICO.

## ISSUE OF 1855.

Profile of Queen, with laurels, to right in circle; inscribed "Correos" above, curved water-marked lines. Blue,  $\frac{1}{2}$  r. plata Green, 1 r. Red, 2 r.

## ISSUE OF 1856.

Similar; with crossed water-marked lines; colours and enumeration the same.

## ISSUE OF 1857.

Similar; no water-mark; colours and enumeration the same.



Similar, with "Y  $\frac{1}{4}$ ," printed in black, on profile. 2 r. p. (cuartillo).

### ESSAYS.

Similar to last three issues, in red and in black.  $\frac{1}{2}$  r. p. 1 r. p. 2 r. p.

## PHILIPPINES (LUZON).

### ISSUE OF 1854.

Profile of Queen to right, in pearled circle; inscribed "Correo Interior;" no value denoted. Blue.

Similar; with "Franco," and value denoted. Red, 5 c. Rose, 10 c.

Similar, in oval; inscribed "Correo, 1854 y 55," and "Franco Porto." Black, 1 r.

Similar to last; "Correos" instead of "Correo." Green, 2 r.

## SWEDEN.

### ISSUE OF 1855.

Arms (three crowns) and crown on diapered ground; figures denoting value in top corners; inscribed "Sverige Frimærke." Green, 3 skillings banco. Blue, 4 s. b. Pale brown, 6 s. b. Yellow, 8 s. b. Red, brown, 24 s. b.

### ISSUE OF 1858.

Similar to 1855 issue. Green, 5 öre. Lilac, 9 ö. Blue, 12 ö. Yellow, 24 ö. Red, brown, 30 ö. Lake, 50 ö.

## STAMPS FOR STOCKHOLM.

## ISSUE OF 1855.

Oblong rectangular, inscribed "Frimärke för Lokalbref," in oval; no value denoted. Black, 1 s.

## ISSUE OF 1862.

Similar to 1855 issue. Pale brown, 3 ö.

Lion crouching in front of arms, crowned, in a glory. Brown, 3 ö.

## SWITZERLAND.

## FEDERAL ADMINISTRATION.

## OLDER ISSUE.

White cross on red shield, in ornamental frame and post-horn above; inscribed "Rayons I." at top. Blue. Black printing on blue paper, 5 rappen, 5 cents.

Similar to above; "Rayon II." Black printing on yellow paper. 10 r. or c.

Similar to first; shield red lined. "Rayon III." Red, 15 r. or c. (variation, stamp with smaller figures).

Similar to first; "Post locale" at top. Black,  $2\frac{1}{2}$  r. or c.

Similar to first; shield red-lined. "Orts post" at top. Black,  $2\frac{1}{2}$  r.

## ISSUES OF 1854 TO 1862.

Figure of Helvétia, with cross on shield; inscribed "Franco" at top, and "Rappen, Centimes, Centesimi." Grey, 2. Brown, 5. Blue, yellow, 10. Rose, 15 (sometimes on tinted paper). Yellow, 20. Green, 40. Grey, 1 franc.

Similar to above ; embossed figures and words. Yellow, 20. Green, 40. Grey, 1 franc.

#### ISSUE OF 1862.

Figure of Helvetia, with cross on shield, inscribed " Helvetia " at top, " Franco " at bottom, and figures in corners denoting value in centimes. Grey, 2. Black, 3. Brown, 5. Blue, 10. Orange, 20. Red, 30. Green, 40. Deep yellow, 60. Golden brown, 1 franc.

## CANTONS AND TOWNS.

### BASLE (TOWN).

Embossed : white dove on red shield ; inscribed " Stadt Post Basel," figures in bottom corners. Black,  $2\frac{1}{2}$  rappen.

### GENEVA.

Oblong : half eagle and key on shield, inscribed, on label at top, " 10 Port Cantonal Cent," divided into two portions, each with device, and inscribed at bottom " Port Local." 5 c. Black printing on dark green and light green paper.

### ENVELOPE.

Similar device ; green printing on white paper. 5 c.

### LAUSANNE (TOWN).

White cross, on red, circular shield, with post-horn below, inscribed " Poste Locale " above. Black, 4 cents. 5 c.

### NEUCHÂTEL (TOWN).

White cross on red, oblong shield ; scroll on side, inscribed " Poste Locale " at top. Black, 5 centimes.

## WINTERTHUR (TOWN).

ISSUE OF 1850.

White cross, on red, circular shield; post-horn below, inscribed "Orts Post," "Poste Locale;" figures in corners. Red, black,  $2\frac{1}{2}$  rappen.

## ZÜRICH (TOWN).

ISSUE OF 1850.

Large figure on checkwork ground, in centre, inscribed "Local Taxe" at bottom; some with horizontal, others perpendicular lines. Black, 4 rappen.

Similar; without lines. Black, 4 r.

## ZÜRICH (CANTON).

ISSUE OF 1850.

Similar to Town; but with "Cantonal Taxe;" varieties same as Town. Black, 6 rappen.

## ESSAYS OF ZÜRICH.

ISSUE OF 1843.

Figure denoting value, in oval frame; date "1. 8. 4. 3." in corners; value in words on left; and "Cantonal," or "Local Taxe," on right side. Black,  $\frac{1}{2}$  r. (Town), 6 r. (Canton.)

## THURN AND TAXIS.

## NORTH.

## ISSUE OF 1850.

Square : figure denoting value in square frame ; small figures at angles of frame ; post-horn in corners. Inscribed "Freimarke Deutsch Oestr. Postverein Thurn und Taxis." Black printing on coloured paper. Brown,  $\frac{1}{4}$  silbergroschen. Pink,  $\frac{1}{2}$  s. gr. Green,  $\frac{1}{2}$  s. gr. Blue, 1 s. gr. Rose, 2 s. gr. Yellow, 3 s. gr.

## ISSUE OF 1860.

Square : similar to above ; printed in colour. Pink,  $\frac{1}{2}$  s. gr. Green,  $\frac{1}{2}$  s. gr. Blue, 1 s. gr. Rose, 2 s. gr. Brown, 3 s. gr. Lilac, 5 s. gr. Red, 10 s. gr.

## ISSUE OF 1862.

Square : similar to above. Light green,  $\frac{1}{2}$  s. gr. Orange,  $\frac{1}{2}$  s. gr. Rose, 1 s. gr. Blue, 2 s. gr. Stone, 3 s. gr.

## ENVELOPES.

## ISSUE OF 1861.

Oval : embossed ; figure denoting value ; inscribed "Thurn u. Taxis." Inscription in minute type across envelope, printed in lilac. Orange,  $\frac{1}{2}$  s. gr. Rose, 1 s. gr. Blue, 2 s. gr. Stone, 3 s. gr.

## ISSUE OF 1862.

Oval : embossed ; similar to above in colour and enumeration. Inscription printed in same colour as stamp.

## SOUTH.

## ISSUE OF 1850.

Square: figures denoting value in circular frame; post-horn; figures at corners; inscribed same as North, 1850 issue. Black printing on coloured paper. Green, 1 kreuzer. Blue, 3 kr. Rose, 6 kr. Deep yellow, 9 kr.

## ISSUES OF 1860-62.

Square: similar device to 1850 issue; printed in colour. Green, blue, 1 kr. Blue, rose, 3 kr. Rose, blue, 6 kr. Stone, yellow, 9 kr. Lilac, 15 kr. Red, 30 kr.

## ENVELOPES.

## ISSUE OF 1861.

Octagonal: embossed; figure denoting value; inscribed "Thurn u. Taxis." Inscription in minute type across envelope, printed in lilac. Yellow, 2 kr. Rose, 3 kr. Blue, 6 kr. Stone, 9 kr.

## ISSUE OF 1862.

Octagonal: embossed. Similar to above in colour and enumeration. Inscription printed in same colour as stamp.

## NEWSPAPER STAMP.

Circular figure denoting value, in post-horn; inscribed "Thurn und Taxis." Black, 1 kr.

## T U R K E Y .

## ISSUE OF 1863.

Signature of Sultan in Turkish character over a crescent, bearing an inscription; figures (Turkish) denoting value underneath. Black printing on coloured paper. The red stamps are used for Constantinople.

Yellow, red, 20 paras. Grey, red, 1 piaster. Light blue, red, 2 pi. Rose, red, 5 pi.

## FORGERIES.

## ISSUED IN 1862.

Crescent and star. Olive, 6 truzi.

Golden fleece; with letters "J. F." below. Red, 3 mara.

These were circulated some months before the true stamps were issued.

## T U S C A N Y .

Crowned lion with shield; inscribed "Franco Bollo Postale Toscano." Printed on blue, dark blue, and white papers. Black, 1 quatrino. Yellow, 1 soldo. Lake, 1 crazia (on some, crazie). Blue, 2 cr. Green, 4 cr. Slate, blue, 6 cr. Claret, 9 cr.

Similar to above, on blue paper only. Red, 2 s. Red, 60 cr.

## ISSUE OF 1859.

White cross on shield in mantle, surmounted by crown; inscribed same as former issues. Violet, 1 cent. Green, 5 c. Brown, 10 c. Blue, 20 c. Reddish brown, 40 c. Pink, 80 c. Yellow, 3 lire. (Issued by the Provisional Government.)

## TWO SICILIES (including NAPLES).

## NAPLES.

## ISSUE OF 1857.

Rectangular: horse, legs, and fleur-de-lis; inside frames differing in shape; the whole series pink; inscribed "Bollo della Posta Napoletana,"  $\frac{1}{2}$  grano (round). 1 g. (square). 2 g. (octagon). 5 g. (square). 10 g. (hexagon). 20 g. (lozenge). 50 g. (oval).

## ISSUE OF 1860.

Rectangular: similar to above, in circular frame. Blue,  $\frac{1}{2}$  tornese.

Rectangular: white cross in circular frame. Blue,  $\frac{1}{2}$  t. (Issued by the Provisional Government.)

## ESSAY.

Pink, 3 g. Similar device to the 5 g.

## SICILY.

## ISSUE OF 1859.

Profile of King Ferdinand II. to left; inscribed "Bollo della Posta di Sicilia." Deep yellow,  $\frac{1}{2}$  g. Brown, 1 g. Blue, 2 g. Red, carmine, 5 g. Blue, 10 g. Dark blue, 20 g. Reddish brown, 50 g.

## ESSAYS.

Similar device on ground composed of cross-bars, dotted in the interstices. Black, blue, 10 g.



# WÜRTEMBERG.

## ISSUE OF 1850.

Square: figure denoting value on ground, composed of small circles in diamond frame; date of issue inscribed on right side. Black printing on coloured paper. White, 1 kreuzer. Yellow, 3 kr. Green, 6 kr. Rose, 9 kr. Violet, 18 kr.

## ISSUE OF 1860.

Square: embossed; royal arms, supported by stag and lion, on wavy ground; inscribed at top "Freiarke," and at sides and bottom with value. Brown, 1 kr. Orange, 3 kr. Green, 6 kr. Rose, 9 kr. Blue, 18 kr.

## ISSUE OF 1863.

Similar to above. Green, 1 kr. Dark pink, 3 kr. Blue, 6 kr. Brown, 9 kr.

## ENVELOPES.

### ISSUE OF 1862.

Octagon: figure denoting value, in oval frame, embossed. Pink, 3 kr. Blue, 6 kr. Brownish yellow, 9 kr.

## STAMP FOR RETURNED LETTERS.

Square: Royal arms with laurel wreath in oval; inscribed "Comission für Retourbriefe."

## FORGERIES.

### ISSUE OF 1850.

6 kr., green, changed to blue. 9 kr., rose, changed to white.

# ASIA.

---

## CEYLON.

ISSUE OF 1857.

Profile of Queen Victoria to left, in oval disk; "Postage," in small letters, at bottom. Blue, 1d. Green, 2d. Brownish red, 5d. Various shades of brown, 6d. Reddish yellow, 10d. Lilac, 1s., with figures in top corners.

Octagon: similar to above. Red, 4d. Brown, 8d. Brown, carmine, 9d. Green, 1s. 9d. Blue, 2s.

## ENVELOPES.

Various shapes: embossed; similar device to above. Blue, 1d. (oval). Green, 2d. (oval). Rose, 4d. (oval). Reddish brown, 5d. (oval). Brown, 6d. (round). Brown, 8d. (octagon). Brown, 9d. (rectangular). Yellow, 1s. (round). Green, 1s. 9d. (rectangular). Blue, 2s. (octagon).

## NEWSPAPER STAMPS.

Profile of Queen Victoria to left, in circle; glazed paper. Lilac,  $\frac{1}{2}$ d.

---

## EAST INDIES.

ISSUE OF 1854.

Profile of Queen Victoria to left, on block-printed ground. Red, blue,  $\frac{1}{2}$  anna. Red, 1 a. Green, 2 a.

Octagonal: profile of Queen Victoria, printed in blue, on white ground, remainder of stamp red, printed on blue, white, and yellow paper, 4 a.

#### ISSUE OF 1860.

Profile of Queen to left, in oval; printed on blue paper. Blue,  $\frac{1}{2}$  a. Brown, 1 a. Orange, pink, 2 a. Black, 4 a. Dark pink, 8 a.

#### ISSUE OF 1862.

Similar to above; all except pink, 2 a.; printed on white paper.

### ENVELOPES.

#### ISSUE OF 1861.

Circular: embossed; similar to above. Blue,  $\frac{1}{2}$  a. Brown, 1 a.

### NEWSPAPER STAMP.

#### ISSUE OF 1860.

Profile of Queen Victoria to left, in oval; in octagon frame. Lilac, 8 pies.

## HONGKONG.

#### ISSUE OF 1862.

Profile of Queen Victoria, on tinted ground, to left; Chinese characters at sides, and value at bottom. Light brown, 2 cents. Light yellow, 8 c. Light blue, 12 c. Lilac, 18 c. Green, 24 c. Pink, 48 c. Grey, 96 c.

#### ISSUE OF 1863.

Similar to above. Bluish green, 4 c. Mauve, 6 c. Vermilion, 30 c.

# AFRICA.

---

## CAPE OF GOOD HOPE.

### ISSUE OF 1859.

Triangular : figure of Hope, reclining on anchor and rock.  
Red, 1d. Blue, 4d. Lilac, 6d. Green, 1s.

Similar to above ; printed on blue paper. Crimson, 1d.  
Very dark violet, 4d.

Similar to above ; printed from woodcuts. Red, blue, 1d.  
Red, blue, 4d. The colony at one time ran short of stamps,  
and these were issued for temporary use.

---

## ST. HELENA.

### ISSUE OF 1859.

Profile of Queen Victoria to left, in circular frame ; " Post-  
age " in small letters underneath. Blue, 6d.

### ISSUE OF 1863.

Similar to above. Red, 1d. Rose, 4d. Value printed  
across the stamp.

---

## SIERRA LEONE.

Profile of Queen Victoria to left, in octagonal frame, with  
cut corners. Lilac, 6d.

## LIBERIA.

ISSUE OF 1860.

Goddess of Liberty, with ship, in circular frame; a large-sized stamp. Red, 6 cents. Various shades of blue, lilac, 12 c. Olive-green, green, 2½ c.

## MAURITIUS.

ISSUE OF 1857.

Britannia sitting; value not indicated. Red. Rose. Violet. Green.

ISSUE OF 1858.

Profile of Queen Victoria to left; badly engraved; shading of disk in slanting parallel lines. Red, 1d. Blue, 2d.

Similar to last; shading in crossed vertical lines. Orange, 1d. Blue, 2d.

Similar to 1858 issue; shading in slanting and vertical lines. Blue, 2d.

Similar to 1858; shading in slanting lines. Blue, 2d.

Similar to 1858; printed from woodcut; "Mauritius" on upper margin; Greek border. Red, 1d. Blue, 2d.

Britannia sitting, similar to 1857. Blue, 6d. Red, 1s.

ISSUES OF 1861-63.

Profile of Queen Victoria to left, in oval. Brown, 1d. Blue, 2d. Rose, 4d. Green, 6d. Lilac, 9d. Buff, green, brown, yellow, 1s.

## ISSUE OF 1862.

Britannia sitting, similar to 1857. Purple, 6d. Brown, olive, 1s.

## ENVELOPES.

Various shapes; embossed; profile of Queen Victoria. Lilac, chocolate, 6d. (round). Chocolate, 9d. (profile in five-sided frame; shape is nine unequal sides). Yellow, 1s. (oval).

---

## NATAL.

## ISSUE OF 1857.

Embossed on coloured paper; crown, name, and value; a large-sized stamp. Pink, yellow, blue, 1d. Pink, 3d. Green, 6d. Blue, 9d. Drab, 1s.

## ISSUE OF 1860.

Portrait of Queen Victoria in white-lined oval frame; small square frame, with circle in each corner. Red, 1d. Blue, 3d. Lilac, 6d.

---

## AMERICA, NORTH.

---

### BRITISH COLUMBIA & VANCOUVER'S ISLAND.

ISSUE OF 1862.

Profile of Queen Victoria to left; value on right side; "Postage" on left. Dull pink, 2½d.

---

### CANADA.

ISSUES OF 1857-60.

Rose, ½d. Profile of Queen Victoria to left.  
 Oblong. Red, 3d. Beaver by stream.  
 Dark brown, 6d. Portrait of Prince Albert.  
 Dark green, 6d. sterling = 7½d. currency. Portrait of Queen Victoria.  
 Blue, 10d. Portrait of Cartier or Cabot.  
 Black, 12d. Portrait of Queen Victoria.  
 Rose, 1 cent. Similar device to ½d.  
 Red, 5 c.                    "            "            3d.  
 Dark brown, 10 c.         "            "            6d.  
 Light green, 12½ c.       "            "            6d. sterling.  
 Blue, 17 c.                 "            "            10d.

On all of the above there are figures in corners, denoting value.

## ENVELOPES.

Oval: embossed; similar device to  $\frac{1}{2}$ d. adhesive. Red, 5 c.  
Brown, 10 c.

## ESSAYS.

Similar devices to above, in black:  $\frac{1}{2}$ d., 3d., 6d., and 6d. sterling. Figure denoting value in centre and in bottom corners; "Postage" at top, and "Colony of Canada" at sides. Mauve, 1d.

## CONFEDERATE STATES.

## ISSUE OF 1862.

Red, 1 cent. Profile of Colquhoun to right, in circular frame.

Green, 2 c. Profile to left, in oval frame.

Green, blue, black, 5 c. Portrait of Jefferson Davis in oval frame.

Red, blue, 10 c. Portrait of Beauregard in oval frame.

There are stamps for nearly every border town in the C. S. A.; some appear to belong to private posts. It is very difficult to distinguish between forgeries and the true stamps issued by this Republic. Great care should be exercised in purchasing them.

## NEW BRUNSWICK.

## ISSUE OF 1857.

Lozenge: crown in centre, surrounded by four stars, with figure denoting value, and flowers; figures at corners. Red, 3d. Yellow, 6d. Violet, 1s.



## ISSUE OF 1861.

Oblong: transverse; locomotive engine, in oval frame. Brown, 1 cent.

Similar to above; steam-vessel. Blue, 12½ c.

Portrait of Prince of Wales, in Scotch costume, in oval frame. Black, 17 c.

Portrait of Queen Victoria, crowned, in oval frame; figures in corners. Green, black, 5 c. Red, 10 c.

Portrait of Mr. Connell (postmaster at time of issue), in oval frame; figures in corners. Brown, 5 c.

## NEWFOUNDLAND (ST. JOHN'S).

## ISSUE OF 1860.

Triangular: rose, shamrock, and thistle; figures at corners. Green, 3d. Square: crown, surrounded by four stars, with flowers; figures at corners. Brownish lilac, 1d. Brownish red, brownish lilac, 5d.

## ISSUE OF 1862.

Rose, shamrock, and thistle, in circle, in centre; framework, &c., is different in each stamp. Red and scarlet inks, 2d., 4d., 6d., 6½d., 8d., and 1s.

## NOVA SCOTIA.

## ISSUE OF 1857.

Square: portrait of Queen Victoria; half a star on each side; figures at corners, and inscribed "One Penny Postage" at sides; blue paper. Brown, black, 1d.

Lozenge-shaped : crown, surrounded by four stars, with flowers ; figures at corners. Blue, 3d. Green, 6d. Violet, 1s.

#### ISSUE OF 1860.

Profile of Queen Victoria to left, in circle. Black, 1 c. Black, blue, 5 c.

Portrait of Queen Victoria in oval. Green, 8½ c. Black, bright red, 10 c. Black, red, scarlet, 12½ c.

#### ESSAY.

Figure denoting value in centre, in octagon ; inscribed "Nova Scotia" at sides ; value in words at top and bottom ; figures in corners. Rose, 6d.

## PRINCE EDWARD'S ISLAND.

#### ISSUE OF 1860.

Rectangular : profile of Queen Victoria to left, in various-shaped frames ; inscribed "Prince Edward's Island." Value : Orange, 1d. (oblong). Rose, 2d. (circle). Blue, 3d. (oval). Green, 6d. (hexagon). Lilac, 9d. currency = 6d. sterling (wavy oblong).

## UNITED STATES.

Oblong : eagle on branch, in oval frame ; inscribed "U. S. P. O. Despatch." Blue, gold ink on black paper, 1 cent.

Portrait of Franklin to left, in oval frame ; figures in lower corners, sometimes on blue paper. Brown, 5 c.

Portrait of Washington to right, in oval frame; sometimes on blue paper. Black, 10 c.

#### ISSUE OF 1857.

Portraits and profiles of various persons; inscribed "U. S. Postage" at top. Value at bottom.

Blue, 1 c. (profile of Franklin to right).

Carmine, 3 c. (profile of Washington to left).

Brown, 5 c. (portrait of Washington to left).

Green, 10 c. (portrait of Washington to left; "X" in top corners).

Black, 12 c. (similar portrait).

Brownish lilac, 24 c. (portrait of Washington to right).

Orange, 30 c. (profile of Washington to left, with arms in corners).

Blue, 90 c. (portrait of Jackson).

#### ISSUE OF 1861.

Portraits and profiles of various persons; inscribed "U. S. Postage" at top. Value at bottom; "U. S." in bottom corners; figures in top corners.

Blue, 1 c. (profile of Franklin to right).

Light carmine, 3 c. (profile of Washington to left).

Brown, 5 c. (portrait of Washington to left).

Green, 10 c. (similar to 5 c.)

Black, 12 c. (similar to 5 c.)

Various shades from brown to violet, 24 c. (portrait of Washington to right).

Orange, 30 c. (profile of Franklin to left).

Bright blue, 90 c. (portrait of Jackson to left).

#### ISSUE OF 1863.

Black, 2 c. (portrait of Jackson to right).

## ENVELOPES.

Oval: embossed; profile of Washington to left, on white, blue, or yellow paper. Red, 3 c. Red, green, 6d. Green, 10 c.

## ISSUE OF 1860.

Smaller oval: embossed; profile of Washington to left; on white, blue, or yellow paper. Vermilion, 3 c. Vermilion, 6 c. Green, 10 c.

## ISSUE OF 1861.

Oval: same size as last; embossed on white and yellow paper. Profile of Franklin to right. Blue, 1 c.

Similar to above; profile of Washington to left. Blue, 1 c.

Oval: embossed; profile of Washington to left; inscribed "United States." Figures at sides; on white, blue, or yellow paper. Rose, 3 c. Rose, 6 c.

Transverse oval: similar to last. Value in words over profile. Green, 10 c.

Transverse oval: similar to last; printed in two colours on white or yellow paper. Brown and red, 12 c. Blue and red, 20 c. Green and red, 24 c. Black and red, 40 c.

## ISSUE OF 1863.

Similar; portrait of Jackson. Black, 2 c.

## ESSAYS.

Profile of Washington to left, divergent rays. Carmine, 3 c.

## ISSUE OF 1857.

5 c.; is found in a great variety of browns, reds, and greens.

## SPECIAL OR PRIVATE POSTAGE STAMPS.

Adams and Co., Eagle City Post Paid.—Circular. Black on white.

Adams' Eagle City Post Express.—Blue on white, red on white, black on yellow.

Adams' Express Co.—Red on white, blue on white, green on yellow.

American Express Co., Postage Paid.—Green, 2 c.

American Mail Letter Co.—Eagle to right. Black ink, 20 for a dollar.

Avenue, Eighth Post Office.—Square. Red, black, 5 c.

Bank and Insurance Notice Delivery Office, 50, William Street.—Blue.

Same inscription, 82, Broadway.—Blue.

Blood and Co., all Letters off except a Bag.—Black.

Blood's Despatch Paid.—Small eagle. Black ink. White, green.

Blood's Despatch Stamp for Philadelphia Delivery.—Circular. Vermilion on yellow.

Blood's One Cent Despatch.—Small square. Black on bronze.

Blood's Paid Despatch.—Dove; oval. Black ink. Gold, white, green.

Same device.—Small square. Black on green.

Blood's Penny Post, Kochersperger & Co., Philadelphia.—Bust: oval. Black on white.

Same inscription.—Bust: square. Black on white.

Blood's Penny Post, Philadelphia.—Small oblong. Blue on tint, bronze on lavender, gold on white, bronze on stone, bronze on black.

Blood's Post Office Despatch.—Square. Black on bronze.

Blood's 28, South Sixth Street Despatch.—Red on yellow, red on white.

D. O. Blood & Co., City Despatch Paid.—Man over buildings: square. Black ink. White.

D. O. Blood & Co., City Despatch Post Paid.—Man over buildings: square. Black ink. White.

Same device, without name of proprietor.—Square. Black ink. White.

Bouton's Rough-and-ready City Despatch Post.—Profile. Black ink. White, 2 c.

Boyce's City Express Post.—Oblong. Black on green, 2 c.

Boyd's City Express Post.—Eagle on globe: oval. Black ink. Lilac, 1 c. Violet, 1 c. Green, 1 c. Light green, 1 c. Dark green, 2 c. Orange, 2 c. Blue, 2 c. Green, 3 c.

Same device.—Oval. Red, 2 c. Gold, 2 c. Silver, 2 c.

Same device.—Oval. Gold ink on coloured paper. Crimson, 2 c. Scarlet, 2 c. Green, 2 c. Blue, 2 c.

Brady & Co.'s Letter Box.—Oblong. Red on yellow, 1 c. Black on yellow, 1 c.

Brainard & Co.—Circular. Blue, black, 20 for a dollar.

Briggs' Paid Despatch.—Square. Gold on rose.

Broadway Post Office.—Steam-engine: oblong. Black on white, 1 c., 2 c.

Brooklyn City Express Post.—Dove in oval. Black ink on coloured paper. Blue, 1 c. Pink, 2 c. Rose, 2 c. Crimson, 2 c.

Brown & Co., City Post.—1 c., 2 c.

Brown & McGill's U. S. P. O. Despatch.—Eagle in oval, to left: oblong. Blue, 2 c. Black, 2 c.

M. C. Callaway, Paid.—Blue, 2 c.

Carrier's Despatch.—Oblong. Blue, 1 c. Pink, rose, 1 c.

G. Carter's Paid Despatch.—Small oblong. Black on white.

Central Post Office.—Circular. Black ink. Yellow, 1 c. Buff, 1 c.

Cheever and Towle, 7, State Street, City Letter Delivery.—Circular. Blue, 2 c. Red, 2 c.

Chicago Penny Post.—Beehive. Orange.

City Despatch Delivery.—Figure of Justice: oval. Black, 1 c.

City Despatch Post.—Head. Green, 2 c. Brown, 2 c. Black, 2 c.

City Express Post.—Blue, 1 c. Black, 1 c. Black, 2 c. Blue, 2 c.

City Letter Express Mail.—Coat-of-arms. Red, black, 1 c. Red, 2 c.

Clark & Co.—Letter-box. Red, 1 c. Blue, 1 c.

Clinton's Penny Post, Philadelphia.—Oblong. Black on white.

Compagnie Franco-Americaine (issued by Gruthier Frères).—Ship: oblong. Red on white.

Cornwell's Post Office, Madison Square.—Portrait. Red, 1 c.

Cresman & Co.'s Penny Post, Philadelphia.—Oblong. Gold on rose, gold on black.

De Ming's Penny Post, Frankford.—Small oblong. Black on brown, black on white.

Dupuy and Schenck's Penny Post.—Beehive: oblong. Black on white.

Eagle City Post from Adams' Express.—Oblong. Black on lemon.

East River Post Office.—Steamship: oblong. Black ink. Green, 2 c.

Essex Letter Express.—Ship in oval. Black ink. Red, 2 c.

Floyd's Penny Post.—Bust in circle. Blue, brown, black, green, rose.

Grafflin's Baltimore Despatch.—Monument. Black ink. White, 1 c. Red, 1 c.

Gordon's City Express.—Black ink. Green, 2 c. White, 2 c.

Government City Despatch.—Courier: oblong. Black, 1 c. Pink, 1 c. Slate, 1 c.

Hale & Co., Boston.—Octagon. Blue, red, 20 for a dollar.

Hale & Co., 13, Court Street, Boston.—Octagon. Blue, red.

Hanford's Pony Express.—Courier: oval. Black ink. Yellow, 2 c.

Healey's Express Post Letter Stamp.—Green, 1 c. Black, 1 c.

Harnden's Express. — Man with mail-bags: Circular. Black on white.

Honour's City Post.—Blue on white, black on yellow, 1 c.

Honour's City Post Paid.—Black.

Hourly Express Post Letter Stamp.—Black ink on coloured paper. Lozenge. Green, 1 c.

Hussey's Bank and Insurance Letter City Post.—Name and strong box. Black on white, rose on white, black on yellow.

Same inscription, 50, William Street, basement.—Carmine, black.

Same inscription, 82, Broadway.—Carmine, black.

Hussey's Bank and Insurance Notice Delivery Office.—Blue, 1 c. Pink, 1 c.

Hussey's Bank and Insurance Special Message Post.—Blue, 1 c. Brown, 1 c. Green, 1 c. Yellow, 1 c. Rose, 1 c. Red, 1 c.

Hussey's One Stamp or Cent each Delivery.—Red, 1 c.

International Express.—Oblong. Black ink. Vermilion, 2 c.



International Letter Express.—Oblong. Black ink. Fawn, 2 c.

Jenkins' Camden Despatch.—Head. Black ink; square. Stone, white.

Johnson's to the Post Office every two hours.—Shield-shaped. Black on white.

Kochersperger & Co.—Profile to right; red on yellow. Envelopes, black on white.

Langton's Pioneer Express.—Twisted border; with name in large letters; oval. Black.

Letter Express Free.—Oval. Black.

McIntire's City Express Post.—Mercury scattering letters. Carmine, 2 c.

Messenkope's Union Square Post Office.—Black on green, 1 c.

Metropolitan Errand and Carrier Express Co.—Red ink; shield-shaped. 1 c., 5 c., 10 c., 20 c.

Same device.—Blue ink; shield-shaped. 1 c., 5 c., 10 c., 20 c.

Same device in relief.—Shield-shaped. Red, 2 c.

Metropolitan Post Office Express to Mail.—Wm. H. Laws, P. M., embossed in white relief; shield-shaped. Vermilion, 1 c. Blue, 1 c.

G. A. Mills' Free Dispatch Post.—Black on green.

Moody's 1d. Dispatch, Chicago.—Oblong. Black on yellow.

Money Package American Express (from Wisconsin).—Large letters. Red, black.

Newburgh American Express Company.—Flag. Blue on red.

New Jersey Express Company.—Horse's head in relief; oval. Green on yellow.

New York Post Office.—Bust; large rectangular. Black on blue, 5 c. Black on white, 5 c.

One Cent Despatch.—Cavalier. Red.

Same device.—Inscription, "Washington." Red, blue.

Paid Eagle Post, at Adams' Express.—Small oblong. Red, blue.

Pimeroy's Letter Express.—Female bust; black ink; square. Yellow, white.

Post Office Despatch.—Oblong. Red, 1 c. Blue, 1 c. Bronze, 1 c.

Price's City Express Post.—Bust; black ink; large oval. Green, 2 c. Red, 2 c.

Price's City Express Post.—Head; black ink; small oval. Green, 2 c. Red, 2 c.

Priest's Paid Despatch.—Black ink; oblong. Rose, blue, buff.

Prov. R. I. Post Office.—Black ink; oblong. 5 c.

Robinson and Co.'s Dispatch.—Brown on blue, 1 c. Red, on green, 1 c.

Robison and Co.—Envelope; black ink; oblong. Lavender, 1 c.

Roadman's Penny Post.—Oblong. Red.

Russell's Post Office.—Profile to left; black ink; octagonal. Green, yellow, rose.

Russell's Post Office.—Profile to right. Dark green on green, red on pink.

Saint Louis Post Office.—Device supported by bears; black ink. 10 c.

Smith's City Express Post, Postage Paid.—Black ink; oblong. Green, 2 c.

Smith's City Express Post, to be Collected on Delivery.—Black ink; oblong. Red, 2 c. Green, 2 c.

Souter & Co.'s City Letter Despatch.—Black ink. 1 c., 2 c.

Spence & Brown's Express Paid Post.—Octagonal. Black.

Squire & Co.'s City Letter Despatch.—Dove, in shield. Puce, 1 c. Marone, 1 c. Rose, 1 c. Green, 1 c. Green, 2 c. Red, 2 c.

Same device.—Octagonal. Green, 1 c.

Stait & Co.'s Eagle City Post.—Large square. Black on yellow.

W. Stait of the City Despatch.—Black ink; oblong. Yellow.

Staten Island Paid Express Post.—Oblong. Red, 3 c.

Steinmeyer's City Post Paid.—Rose, 2 c. Yellow, 2 c. Green, 2 c. Blue, 2 c.

Stringer and Morton's City Dispatch.—Oblong. Black on brown, 1 c.

Swarts' City Dispatch Post.—Portrait. Brown, pink, black.

Swarts' for U.S. Mail.—Blue, 1 c., prepaid. Square; yellow on black, 1 c. Round, 1 c.

Swarts' Rough-and-ready City Dispatch Post.—Profile to left. Red.

Teese & Co.'s Penny Post, Philadelphia.—Small oblong. Blue on buff, red on white.

Thompson & Co.'s American Express.—Black on green.

Union Square P. O. City Dispatch.—Black ink; shield-shaped. Rose, 2 c.

Union Square P. O. to the Mail, N. Y. City.—Black ink; shield-shaped. Green, 1 c. Red, 1 c.

United States City Dispatch Post.—Bust in oval; black ink. Green, 3 c. Blue, 3 c.

U. S. Mail, prepaid.—Black ink. Pink, 1 c. Buff, 1 c. Yellow, 1 c.

U. S. P. O. paid.—Oblong. Gold on black, 1 c. Purple on white, 1 c. Black on white, 1 c.

Warwick's City Dispatch Post.—Diamond border ; black ink. Carmine, 2 c. Yellow, 2 c.

Same inscription.—Chain border ; black ink. Yellow, 2 c.

Same inscription.—Plain border ; red ink. 2 c., 6 c.

Same device.—Large rect. Yellow, 2 c.

Washington City Dispatch.—Courier. Lilac, 1 c. Brown, 1 c.

Wells, Fargo, & Co.—Name in garter ; circular. Blue,  $\frac{1}{2}$  oz. 1 dollar.

Wells, Fargo, & Co. One Newspaper over our Californian Route.—Large oblong. Blue.

Wells, Fargo, & Co. Paid Express.—Black ink ; oblong. White.

Wells, Fargo, & Co. Pony Express.—Man on horse. Brown,  $\frac{1}{2}$  oz. 10 c. Red, 1 dollar. Green, 2 dol. Black, 2 dol. Rose, 2 dol. Green, 4 dol. Black, 4 dol.

Wells, Fargo, & Co. Pony Express.—If enclosed in our franks (man on horse). Blue,  $\frac{1}{2}$  oz. 25 c.

Wells, Fargo, & Co.—Stage-coach, 4 horses overland, via Los Angeles for U. S. Mail. Black.

West-town Stage Dispatch.—Gold, red, orange.

Whiteley's Express.—Head in oval. Red, 2 c.

Winan's City Post.—Black ink ; oblong. White, 2 c. Yellow, 5 c. Green, 10 c. Red.

W. Wyman, 8, Court Street, and 3, Wall Street.—Twenty stamps for one dollar ; Locomotive and cars ; oblong. Black.

# CENTRAL AMERICA.

---

## COSTA RICA.

ISSUE OF 1863.

Two ships and rocks, surmounted by five stars, enclosed in a frame formed with laurels and standards; inscribed "Correos de Costa Rica," "Porte Reales," and value. Black, blue, green,  $\frac{1}{2}$  reale. Red, 2 r.

---

## MEXICO.

ISSUE OF 1857.

Portrait of President in oval frame; inscribed "Correos Mejico" at top, and value at bottom. Blue,  $\frac{1}{2}$  real. Yellow, 1 r. Green, 2 r. Red, 4 r. Brownish lake, 8 r.

ISSUE OF 1861.

Similar to above; black printing on coloured paper. Light brown,  $\frac{1}{2}$  real. Green, 1 r. Pink, 2 r. Yellow, 4 r. Brown, 8 r.

Similar to above; coloured ink on coloured paper. Red on yellow, 4 r. Green on brown, 8 r.

N.B.—Each issuing State marks the name on the edge of the stamp.

## NICARAGUA.

ISSUE OF 1862.

Transverse, oblong: view, sun rising from behind mountains; cap of Liberty on top of third peak; inscribed "Nicaragua" at top, "Correos Porte" at sides, and value at bottom in words; figures in corners. Blue, 2 centavos. Black, 5 c.

### FAC-SIMILE OF NICARAGUAN STAMP.

Black, 5 centavos. The only way to test this stamp is by placing a drop of water on it: on the fac-simile it will run as if on blotting paper, but it will not run at all on the true stamp.

## SOUTH AMERICA.

### ARGENTINE CONFEDERATION.

ISSUE OF 1860.

Rising sun, and cap of Liberty on pole; inscribed "Confed. Argentina," in white frame with Greek border. Carmine, 5 centavos.

ISSUE OF 1861.

Similar to above; larger Greek border. Red, 5 centavos. Green, 10 c. Blue, 15 c.

## ISSUE OF 1862.

Cap of Liberty on pole, with rising sun above, encircled by wreath; inscribed "Republica Argentina." Pink, 5 centavos. Green, 10 c. Blue, 15 c.

Sun with rays; inscribed "Diligencia," and value. Blue, 60 centavos. Green, 80 c. Red, 1 real.

## FORGERIES.

## ISSUE OF 1861.

Red, 5 c. Green, 10 c. Blue, 15 c. In all the forgeries the cap of Liberty and pole are wanting.

## BRAZIL.

## ISSUE OF 1860.

Transverse, oblong: large size Roman numerals denoting value, with curls in ornamented frame; printed in black on white paper. 30, 60, and 90 reis.

Transverse, oblong: Italic figures denoting value, with arched corners; printed in black on white paper. 10, 30, 60, 90, 180, 300, 600 reis.

## ISSUE OF 1861.

Transverse, oblong: Roman numerals denoting value; printed in black on white paper. 10, 20, 30, 60, 90, 100, 180, 300, 600 reis.

Transverse, oblong: small size Roman numerals in oval disk; horizontal lines at corners. Red, 280 r. Orange, 430 r.

## NEWSPAPER STAMPS.

Transverse, oblong: similar to 1861 issue; printed in blue on white paper. 10 and 30 reis.

There is not any name of the issuing country on any of the above. There are three fine lines connecting the figures in all the stamps.

## BRITISH GUIANA.

## ISSUE OF 1853.

Clipper ship sailing to right in shield; inscribed "Damus petimusque vicissim" at bottom, value at top; "British Guiana" at sides; black printing on coloured paper. Red, 1 cent. Blue, 4 c.

Similar to above; "Petimusque," &c. Red, 4 c.

Clipper ship sailing to left, in oval frame; inscribed with motto as above, "Postage" at top, and dated in corners "1. 8. 5. 3." Red, black, 1 c. Blue, black, 4 c.

## ISSUE OF 1860.

Similar to last; ship to right, in garter; "Guiana" at top. "1. 8. 6. 0." in corners. Black, red, rose, brown, 1 c. Orange, 2 c. Blue, 4 c. Pink, 8 c. Lilac, grey, 12 c. Green, 24 c.

## ISSUE OF 1863.

Similar to last; dated "1. 8. 6. 3." Blue, 6 c. Pink, 48 c.

## NEWSPAPER STAMPS.

## ISSUE OF 1850.

Type-printed; value in centre; inscribed "British Guiana" near the margin. Green, 8 c.



## ISSUE OF 1862.

Square: centre blank; inscribed "British Guiana;" black printing on coloured paper (three issues); with outside frame formed of leaves, sprigs, or small circles; type-printed Rose, 1 c. Yellow, 2 c. Blue, 4 c.

---

## BUENOS AYRES.

## ISSUES OF 1858-59.

Transverse, oblong: steamship in oval; inscribed "Correos" at top, "Buenos Aires" at bottom, and "Franco" at sides. Blue, brown, 1 peso. Black, blue, 2 p. Green, 3 p. Blue, brown, red, 4 p. Blue, brown, yellow, 5 p.

## ISSUE OF 1860.

Transverse, oblong: profile of Goddess of Liberty to left, in circular frame; same inscription as 1858-59 issues. There is a great difference in the fineness of the engraving of these stamps; the best are the latest issued. Green, 4 reales. Blue, red, 1 p. Blue, red, 2 p.

---

## CHILI.

## ISSUE OF 1860.

Profile of Columbus to left; inscribed "Colon Chile," and "Correos Porte Franco," on circular frame; printed on blue paper. Brown, 5 centavos. Blue, 10 c.

## ISSUE OF 1861.

Similar to above, on white paper. Yellow, 1 c. Black, red, 5 c. Blue, 10 c. Green, 20 c.

## CORRIENTES.

Profile to left; inscribed "Corrientes" at top; value at bottom; printed on blue paper. Dark blue, 1 real.

Similar to above, without value; printed on blue paper. Dark blue.

### ISSUE OF 1863.

Similar to above; value at bottom; printed on blue paper. Dark blue, 3 centavos.

## MONTEVIDEO.

Transverse, oblong: sun with rays; inscribed "Correo Montevideo" in Roman letters; value once in large figures; star in corners. Lilac, brown, 60 centesimos. Orange, 80 c. Red, rose, 100 c. Blue, 120 c. Green, 180 c. Red, 240 c.

Similar device to above; value twice in figures; inscribed in Egyptian type; four dots in each corner. Blue, 120 c. Green, 180 c. Red, 240 c.

These stamps, in all probability, are used throughout all Uruguay.

## NEW GRANADA.

### ISSUE OF 1859.

Octagonal: arms on shield, in circle; inscribed "Confed Granadina Correos Nacionales," and value. Green, 2½ centavos. Brown, blue, yellow, 5 c. Brown, red, yellow, 10 c. Brown, blue, 20 c. Carmine, 1 peso.

## ISSUE OF 1860.

Similar to above; words and figures larger. Green,  $2\frac{1}{2}$  c. Lilac, 5 c. Brown, 10 c. Blue, 20 c.

## ISSUE OF 1861.

Arms on shield, with nine stars in oval frame; inscribed "Estados Unidos de Nueva Granda, Correos Nacionales." Black,  $2\frac{1}{2}$  c. Yellow, 5 c. Blue, 10 c. Brown, 20 c. Rose, 1 p.

## ISSUE OF 1862.

Octagonal: arms on shield in circle, on ground composed of wavy lines; inscribed "E. U. de Colombia, Correos Nacionales." Lilac, blue, 10 c. Rose, red, 20 c. Green, 50 c. Lilac, 1 p.

Similar to above, with foliage at side, and nine stars at top, on white ground. Yellow, brown, 5 c. Blue 10 c.

## FORGERY.

## ISSUE OF 1861.

Black,  $2\frac{1}{2}$  c. The true stamp has nine stars under the inscription; in the forgery they are wanting.

## PACIFIC OCEAN STEAM NAVIGATION COMPANY.

These stamps are used for letters transmitted from one Peruvian port to another.

Oblong: steam ship enclosed in oval frame; "P. S. N. C." in corners. Blue, red, brown,  $\frac{1}{2}$  oz., 1 real. Blue, red, brown, 1 oz. 2 r.

## PARAGUAY.

Lion, with pole and cap of Liberty in oval frame; inscribed "Re del Paraguay Correo," not any value denoted. Blue, red, green, lilac, pale brown, pink, black.

---

## PERU.

Square: arms (cornucopiæ, llama, and tree) on shield, surrounded by wreath, enclosed in circle with shaded ground; inscribed "Correos Porte Franco," and value. Blue, grey, 1 dineero. Brown, 1 peseta.

Square: similar to above, border consisting of single lines.

Blue, 1 d. Rose, 1 peseta. Yellow,  $\frac{1}{2}$  peso.

Square: similar to above on white ground. Blue, 1 d. Red, rose, 1 peseta.

### ISSUE OF 1863.

Square: embossed, similar to above; arms in circle. Red, black, 1 d. Brown, 1 peseta.

---

## VENEZUELA.

### ISSUE OF 1859.

Arms with cornucopiæ at top and foliage at sides on lined ground; inscribed "Correo de Venezuela;" on blue paper. An edition in 1860 on white paper. Yellow,  $\frac{1}{2}$  real. Blue, 1 r. Red, 2 r.

### ISSUE OF 1862.

Similar to above, with larger frame and white ground. Green,  $\frac{1}{4}$  c. Lilac,  $\frac{1}{2}$  c. Purple, 1 c.

# WEST INDIES.

---

## ANTIGUA.

ISSUE OF 1862.

Profile of Queen Victoria to left, on a ground composed of stripes in ribbon patterns; value at bottom. Red 1d. Green, 6d.

---

## BAHAMAS.

ISSUE OF 1861.

Portrait of Queen Victoria, crowned in white; lined oval frame; inscribed "Bahamas Interinsular Postage." Red, 1d. Lake, 1d.

ISSUE OF 1862.

Similar to above, with small stars in corners; inscribed "Bahamas Postage." Rose, 4d. Various shades of lilac, 6d.

ISSUE OF 1863.

Similar to above. Green, 1s.

## BARBADOS.

Figure of Britannia, with ship in background, on a ground-work similar to the 1d. English stamp; name at bottom.

Not any value denoted; on white or blue paper. Green. Blue. Red. Rose.

### ISSUE OF 1862.

Similar to above; small stars in corners; name at top; value at bottom. Red, 6d. Grey-black, 1s.

## GRENADA.

### ISSUE OF 1860.

Portrait of Queen Victoria, crowned, in white lined oval frame; small cross in each corner; name at top; value at bottom. Green, 1d. Red, 6d.

## JAMAICA.

### ISSUE OF 1860.

Rectangular: profile of Queen Victoria to left, with laurel wreath. Light blue, 1d. (in circular frame). Pink, 2d. (circular frame). Orange, 4d. (circular frame). Lilac, 6d. (hexagon frame). Brown, 1s. (oval frames).

### ISSUE OF 1863.

Similar to above. Green, 3d.

## NEVIS.

ISSUE OF 1861.

Picture, representing Benevolence (three women) : bordering of each stamp differs. Red, 1d. (value in light letters). Rose, 4d. (light letters). Grey, 6d. (dark letters). Green, 1s. (light letters).

---

## ST. LUCIA.

ISSUE OF 1860.

Portrait of Queen Victoria in white-lined oval frame ; not any value denoted. Red, 1d. Blue, 4d. Green, 6d.

---

## ST. VINCENT.

ISSUE OF 1860.

Portrait of Queen Victoria, enclosed in network border ; small stars in corners. Red, 1d. Green, 6d.

---

## TRINIDAD.

Figure of Britannia, with ship in background ; value not denoted ; printed from woodcut engraving. Red. Grey. Blue. Black. Purple.

Similar to above, on blue paper.

## ISSUE OF 1861.

Similar to above; inscribed "Trinidad" at bottom. Red. Black. Crimson. Blue.

## ISSUE OF 1862.

Similar to above; "Trinidad" at top; value at bottom. Violet, 4d. Green, 6d. Bluish black, 1s.

## ISSUE OF 1863.

Similar to last. Purple, 4d.

---



---

## A U S T R A L A S I A .

---

### NEW SOUTH WALES.

View of sea-coast, and church in distance; figures in the foreground; inscribed "Sig. Nov. Camb. Aust.," with motto, "Sic fortis Etruria crevit," at bottom; slight differences in each stamp in colour and device. Red, 1d. Green, blue, 2d. Green, brown, pink, 3d.

Profile of Queen Victoria to left, with laurel wreath; "Postage" in arch over head; printed on white or blue paper. Red, 1d. Blue, 2d. Green, 3d. Brown, 6d. Orange, 8d.

Similar to last; "Registered" printed in two colours; value not denoted. Red and blue. Yellow and blue.

Profile of Queen Victoria to left, with diadem; "Postage" in arch, immediately over the head; small pattern in top corners, different to bottom. Orange. Dark brown. Red, 1d. Blue, 2d. Green, 3d.

Similar to last; "New South Wales" in arch over head. Blue, 2d.



Square, large size: profile as before; in ornamented circular frame, which is enclosed in a white-lined six-sided frame. Green, 5d. Various shades of lilac and brown, 6d.

Square, large size: similar to last, in white-lined octagonal frame. Yellow, 8d. Red, blue, rose, 1s.

Circular: similar to above; head crowned; very richly engraved. Dark lilac, 5s.

## NEW ZEALAND.

### ISSUE OF 1860.

Small portrait of Queen Victoria; ermine robe across shoulder, in circular frame; printed on blue or white paper. Red, 1d. Blue, 2d. Red, brown, 6d. Green, 1s.

### ISSUE OF 1862.

Similar to above. Brown, 6d.

### ISSUE OF 1863.

Similar to above. Violet, brown, 3d.

On letters that were wrecked in the "Colombo" are found—Red, 1d., changed to brown; and blue, 2d., to lilac.

## QUEENSLAND.

### ISSUE OF 1861.

Portrait of Queen Victoria, in oval frame; scroll-work at sides; inscribed at top "Queensland," and value at bottom. Red, 1d. Blue, 2d. Brown, 3d. Green, 6d. Dark greyish brown, 1s.

Similar to above, inscribed "Queensland Registered," not any value denoted; cut corners. Pale brown, brown.

## SANDWICH ISLANDS.

## ISSUE OF 1861.

Large portrait of King Kamehakameha III. ; foliage on each side of stamp ; "Elna Keneta" at bottom, "Uku Leta" and value at top. Red, 2 cents.

## ISSUE OF 1860.

Small portrait of King ; value in top corners in figures, and at bottom ; "Honolulu" and "Hawaiian Islands" at sides. Blue, 5 c. (on white and blue paper). Red, 13 c. (Hawaiian, 5 c., U. S. 8 c.)

## INTERINSULAR POSTAGE.

## ISSUE OF 1860.

Large figure, denoting value in centre ; "Inter Island" at top : the whole stamp printed from type and rules, and differing frequently in size. Black, blue, 1 c. Black, blue, 2 c.

## SOUTH AUSTRALIA.

## ISSUE OF 1861.

Profile of Queen Victoria to left, in circular frame ; "Postage" and "South Australia" at top ; value, in words, at bottom. Green, 1d. Red, two shades, 2d. Bluish lilac, 6d. Yellow, 1s.

## ISSUE OF 1863.

Similar to above ; in oval frame, light grey, 9d. In circular frame, lilac, brown, 1s.

## TASMANIA, OR VAN DIEMEN'S LAND.

Profile of Queen Victoria to right, in oval frame; inscribed "Van Diemen's Land." Blue, 1d.

Octagon: similar to above, in circular frame. Red, brown, orange, 4d.

Circular: profile of Queen Victoria to left; inscribed as above. Red, 10d.

## ISSUE OF 1860.

Portrait of Queen Victoria; inscribed "Tasmania" at top. Lilac, 6d. Red, 1s.

Similar to last; inscribed "Van Diemen's Land." Reddish brown, 1d. Green, 2d. Blue, 4d.

## VICTORIA.

Queen Victoria on throne (for Melbourne). Brown, 1d. Brownish pink, 2d.

Similar to last; "Victoria" in arch at top. Green, 1d. Black, blue, 6d.

Half-length; Queen on throne. Rose, buff, 1d. Light brown, 2d. Blue, 3d.

Octagonal: profile of Queen Victoria to left, in circular frame. Blue, 1s.

Profile as last; inscribed "Victoria" at top, "Postage stamp" at sides. Black, yellow, red, 6d. Green, 2s.

Profile of Queen Victoria to left, in oval frame, with diadem; devices in each corner of stamp. Black, green, 1d. Purple, grey, 2d. Pink, red, 4d.

Similar to last; without devices in corners. Black, brown, green, 1d.

## ISSUES OF 1861-62.

Profile of Queen Victoria to left, in oval frame, with diadem; figures at sides of oval frame in small ovals; white letters. Black, blue, 3d. Rose, 4d. Yellow, black, 6d.

Similar to last; large black letters. Black, 6d.

## SPECIAL STAMPS.

Registered: profile of Queen Victoria to left, with diadem. Blue and rose, 1s.

Too late: similar to above. Lilac and green, 6d.

## WEST AUSTRALIA.

Swan swimming to left, inscribed at sides "Western Australia," and "Postage" at top. Black, 1d. (oblong). Brown, 2d. (octagonal). Blue, 4d. (octagonal). Bronze, 6d. (octagonal). Yellowish brown (oval), 1s.

## ISSUE OF 1861.

Transverse oblong rectangular: similar device to above. Rose, 1d. Reddish yellow, black, 2d. Black, 4d. Black, red, green, 6d. Black, 1s.

## ISSUE OF 1862.

Similar to above. Blue, 2d. Red, 4d. Lilac, 6d. Green, 1s.

Some of the above stamps are found with holes pierced through them; this is done before giving them to convicts for payment of their letters home; by this means their letters can be easily recognised.

# THE FAMILY HERALD;

A Domestic Magazine of

USEFUL INFORMATION AND AMUSEMENT.

---

---

THE FAMILY HERALD, Weekly, 1d.

---

THE FAMILY HERALD, Monthly, 6d.

---

THE FAMILY HERALD, Annual Volumes, 7s. 6d.

---

THE FAMILY HERALD, Complete Sets, Twenty-one Volumes, £8 5s. 6d.

---

THE FAMILY HERALD.

ALL THE BACK NUMBERS ARE IN PRINT, and may be had by order of any Bookseller.

---

THE FAMILY HERALD.

REGISTERED FOR TRANSMISSION ABROAD.

---

THE FAMILY HERALD.

SATURDAY REVIEW. "The Family Herald stands at the head, both in age and popularity, of all the penny serials."

---

THE FAMILY HERALD.

BRITISH QUARTERLY REVIEW. "The Family Herald may be considered the Paterfamilias of the whole stock of penny weekly serials. It is well considered, with reference to its aims, and is various and amusing, with a fair amount of utility intermixed. Of all these publications, we are inclined to consider the Family Herald the best."

---

THE FAMILY HERALD.

LEIGH HUNT'S AUTOBIOGRAPHY. "I call out every week for my Family Herald, a penny publication qualified to inform the best of its contemporaries."

---

THE FAMILY HERALD.

THE BOOKSELLER. "For amusing reading, such as may be admitted to one's household without fear of consequences, we can recommend the Family Herald, the father of this class of publications. For one penny you get a portion of a well-written novel, two or three novelettes, a lot of useful information interspersed throughout, a page of answers to correspondents, alone worth the penny, and a variety of other matters, which will make readers either merrier or wiser, or perhaps both."

## THE FAMILY HERALD.

LITERARY GAZETTE. "It must be said of the Family Herald, that it is the purest reading of all purely amusing literature; it is, indeed, a family paper."

## THE FAMILY HERALD.

LEADING AND SCIENTIFIC ARTICLES. "Its leading and scientific articles are the very pattern of cheap journalism."—*Saturday Review*.

"There is a well-considered leading article or essay, every week, upon some subject of an instructive or thoughtful character."—*British Quarterly Review*.

"The leading articles show marks of an acute and comprehensive spirit."—*Brighton Examiner*.

"The essays are excellent specimens of strong, vigorous writing."—*Cheltenham Journal*.

"Solid and excellent essays are to be found in every number."—*Durham Chronicle*.

"The leading articles are well written, and often exhibit greater research and clearness than is to be found in more pretentious publications."—*Ipswich Express*.

"Its leaders are well written articles on subjects of permanent interest."—*Liverpool Courier*.

"The leading articles would be well worthy of a place in journals of much higher pretensions."—*Poole Herald*.

"Finding favour with the masses, its leading articles interest no less men of education."—*Shields Advertiser*.

"Its leading articles have long been celebrated as disseminators of sound practical information, as well as commentators of the passing events of the time."—*Wakefield Journal*.

"Its leading articles, for which the FAMILY HERALD has always been admired, are excellent."—*Monmouth Merlin*.

## THE FAMILY HERALD.

NOVELS AND TALES. "Its novels and tales are quite as well written as the best circulating library stories."—*Saturday Review*.

"Under the head of the Story Teller, we have novels and tales simpler and purer in structure than in the pages of the other penny serials."—*British Quarterly Review*.

"Its tales are all well told, and full of interest."—*Cheltenham Journal*.

"It is highly eminent as a 'Story Teller.'"—*Gloucester Chronicle*.

"Many of its tales, if given as three-volume novels, would find their way to every reading-room and library in the kingdom."—*Plymouth Herald*.

"The novels and tales are written with great force and elegance, and are good in purpose."—*Poole Herald*.

## THE FAMILY HERALD.

ANSWERS TO CORRESPONDENTS. "The editor is the confidant and confessor in every station of life. The Answers to Correspondents cannot be fictitious, a romance and a life history being embodied in almost each of them; while advice is asked and given, as it seems in good faith, and generally with good sense. On the whole, people may recur to advisers less judicious, and often more interested."—*Saturday Review*.

"Its Correspondence is great upon curious matters, elucidating old customs, and opening up forgotten treasures."—*Gloucester Chronicle*.

"Its Answers to Correspondents are highly instructive and amusing."—*Ipswich Express*.

"The Answers to Correspondents afford an insight to the operations of the heart and mind of society which cannot be obtained elsewhere."—*The Welchman*.

## THE FAMILY HERALD.

POETRY. "There are charming verses let into its pages, like sunshine, to brighten them."—*British Quarterly Review*.

"Its poetical contributions are of a high character, and show that a really clever supervision is exercised over this very interesting department of the paper."—*Derby Telegraph*.

## THE FAMILY HERALD.

RANDOM READINGS. "An anthology of stray humour, most judiciously selected."—*British Quarterly Review*.

"Its Random Readings are the recognised modern Joe Miller."—*Brighton Gazette*.

"The Random Readings are rich in wit, anecdote, and humour."—*Gloucester Chronicle*.

"The Random Readings, which are admirably selected, and abound in witticism and pleasantries, are alone worth all the money."—*Wilts Standard*.

"The Random Readings are replete with laughter-provoking wit and humour."—*Gloucester Chronicle*.

## THE FAMILY HERALD.

FAMILY MATTERS. "Under this head a column of recipes and instructions in household matters, excellent in their way, are given week by week."—*British Quarterly Review*.

"The greatest attention is paid to Family Matters, and every week fresh and handy recipes are given."—*Monmouth Mercur*.

"For family purposes no other magazine can touch it."—*Peterborough Advertiser*.

"That portion devoted to Family Matters is, from its excellence, deserving of all attention."—*Shrewsbury Chronicle*.

"Every phase of domestic and social life receives illumination from its pages."—*Warwick Advertiser*.

"It contains admirable instructions to housekeepers on cookery, the choice of provisions, and housekeeping generally."—*Derbyshire Advertiser*.

"It contains much highly useful information as to domestic matters."—*Gloucester Chronicle*.

"The information weekly conveyed on Family Matters is of the most useful kind."—*North Wilts Chronicle*.

## THE FAMILY HERALD.

THE RIDDLER. "Under this head a fund of amusement is afforded to the home circle in its capital riddles, puzzles, enigmas, charades, and rebusses."—*Brighton Examiner*.

"The beginner will learn considerably from its arithmetical and mercantile questions; while the more practised will find much to work at in the mathematical, astronomical, nautical, and scientific questions, with the advantage of solutions, which are given in extenso."—*Cambridge Chronicle*.

## THE FAMILY HERALD.

EXTRA NUMBERS, 1d. each, or two of either by post, 3d.

DOMESTIC COOKERY; containing upwards of Three Hundred Recipes, in every branch of Economical Cookery; to which are added Useful Hints and Practical Instructions in Domestic Management, showing how to make the most of moderate means.

THE COOK'S ALMANACK; and DIARY OF GOOD LIVING. Containing a Choice and Original Recipe or Valuable Hint for Every Day in the Year, the result of Actual Experience; applicable to the Enjoyment of the Good Things of this Life, consistently with the Views of an Epicure.

THE BOYS'S NUMBER; containing 170 Out-door Games and In-door Amusements for the Year Round.

THE GIRL'S NUMBER; containing 150 Pursuits, Recreations, and Pastimes, for Winter Evenings and Summer Days.

HEALTH AND HAPPINESS; containing Practical Hints for the Preservation of the most valuable of Earthly Blessings, and the attainment of Long Life. When there is Health, all the other joys of life are doubled, and the ills of life are more easily borne.

---

## THE FAMILY HERALD.

FAMILY HERALD HANDY BOOKS, Price 3d. each; post free, 4d.

HOW TO CARVE, AND HOW TO SERVE A DINNER.

FIRST STEPS IN CHESS.

A MANUAL OF MUSIC; with a Dictionary of Musical Terms, ETIQUETTE FOR LADIES.

THE LANGUAGE OF FLOWERS.

ETIQUETTE FOR GENTLEMEN.

HOW TO SWIM, AND HOW TO SKATE.

HOW TO ANGLE; including Trolling and Spinning.

HOW TO BREW, from a Barrel of Beer to a Bowl of Bishop.

HOW TO BAKE, from a Batch of Bread to a Biscuit.

HOW TO PLAY WHIST, LOO, AND CRIBBAGE.

HOW TO PLAY BILLIARDS AND BAGATELLE.

HINTS ON THE ETIQUETTE OF COURTSHIP AND MARRIAGE.

HOW TO PLAY DRAUGHTS, BACKGAMMON, DOMINOES, AND CARDS.

HINTS ON THE TOILETTE.

CROQUET AND ARCHERY.

CRICKET AND FOOTBALL.

*Other Books are in preparation.*

---

## THE MUSICAL HERALD.

---

THE MUSICAL HERALD, in numbers, 1d.

---

THE MUSICAL HERALD, in Parts, 6d.

---

THE MUSICAL HERALD, in Vols., 3s. 6d. each; post free, 4s.

---

THE MUSICAL HERALD, Two Vols. in One, 6s.; post free, 7s.

---

THE MUSICAL HERALD, containing Bishop's Glees, and a Choice Selection from the Old Masters.

---

THE MUSICAL HERALD will, it is hoped, furnish that great and acknowledged want, a carefully edited Collection of Secular Music, in every way suitable for Choral and Amateur Musical Societies.

---

LONDON: WILLIAM STEVENS, 421, STRAND, W.C., and by order of all Booksellers.



OPPEN'S  
POSTAGE STAMP  
CATALOGUE  
AND  
COLLECTOR'S GUIDE

FOURTH EDITION  
REVISED AND CORRECTED BY  
HENRY WHYMPER

**PRICE ONE SHILLING.**

PUBLISHED BY

*William Stevens,  
421, Strand,  
London. W.C.*



THE BEST POSTAGE-STAMP ALBUM PUBLISHED

---

*Now ready, price 5s.; by post, 5s. 6d.*

OPPEN'S  
POSTAGE-STAMP ALBUM  
AND  
CATALOGUE;

With Illustrations of some of the Rarest Stamps

REVISED AND CORRECTED BY HENRY WHYMPER.

---

THE ALBUM, Price 3s. 6d., by Post, 3s. 10d.

May be had separately.

---

LOOSE LEAVES for EXTRA STAMPS, Ninepence per Dozen.

---

LONDON: W. STEVENS, 421, STRAND.

