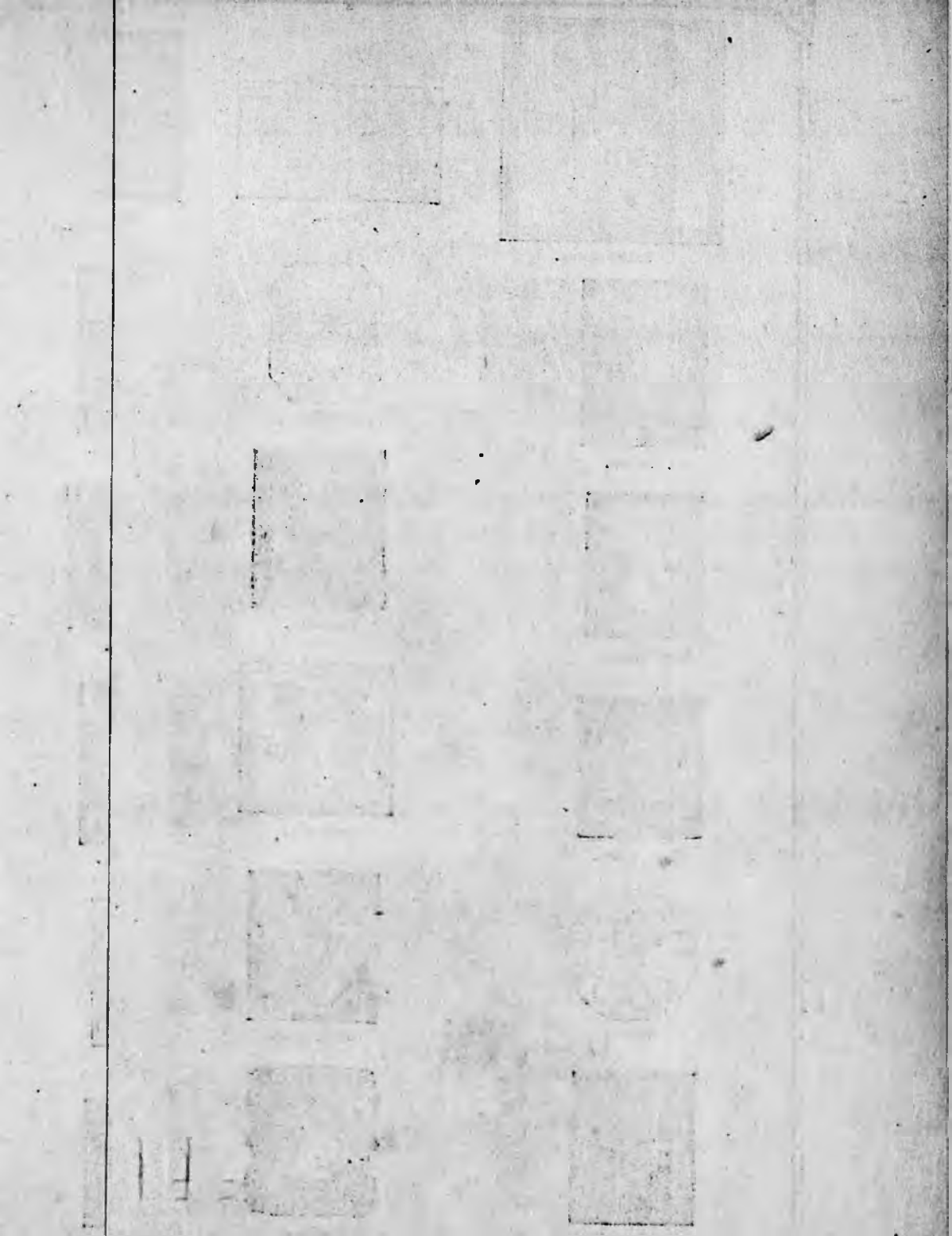


PHILATELIC SECTION.







British Essay.



Geneva.



Berne.



Langton's Express.



British Guiana.



Livonia.



D. O. Blood's Local United States.



St. Helena.



New Granada.



Sicilian Essay.



Nicaragua.



Hong-kong.



Hamburg Local.



Luxembourg.



Nashville.



Bremen.



Finland.



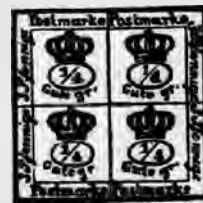
Moldo-Wallachian Essay.



Monte Video.



Monte Video.



Brunswick.



Ionian Islands.



Austria—Newspaper.



Mojile.



New Orleans.



Moldavia.



Italian Essay.



Danish Essay.



Sandwich Islands.



Sandwich Islands.



Russia.



Bahama.



Portugal.



Portugal.



United States.



Spain.



Holstein.



Finland.



San Marino Essay.



Bavarian Essay.



U.S. Sanitary Commission.



Lübeck.



Greek Essay.



Poland.



Spain, 1861.



Livonia.



Russia.



Argentine Republic.



Schleswig.



Sandwich Islands.



Bremen.



Italian Essay.



Parma.



Turkey.



New Caledonia.



New South Wales.



Baden.



Western Australia.



Romagna.



Argentine Confederation.



Holland.



New Brunswick.



Danish Essay.



Costa Rica.



French Essay.



Italy.



Molavia.



Brazil.



Venezuela.



Modena.



Mexico.



Java.



Corrientes.



Greek Essay.



Poland.



Schleswig.



Sandwich Islands.



New Caledonia.



New South Wales.



Holland.



New Brunswick.



Italy.



Moldavia.



Java.



Corrientes.

Brawford 1571

POSTAGE STAMP CATALOGUE

AND

Collector's Guide.

REVISED CORRECTED, AND BROUGHT UP TO THE PRESENT TIME

BY

DR. VINER.

(Forming the Eleventh Edition of OPPEN'S CATALOGUE.)

LONDON:

WILLIAM STEVENS, 421, STRAND.

MDCCLXXVII.

LONDON :
BURT, STEVENS, & CO., PRINTERS,
WINE OFFICE COURT, E.C.



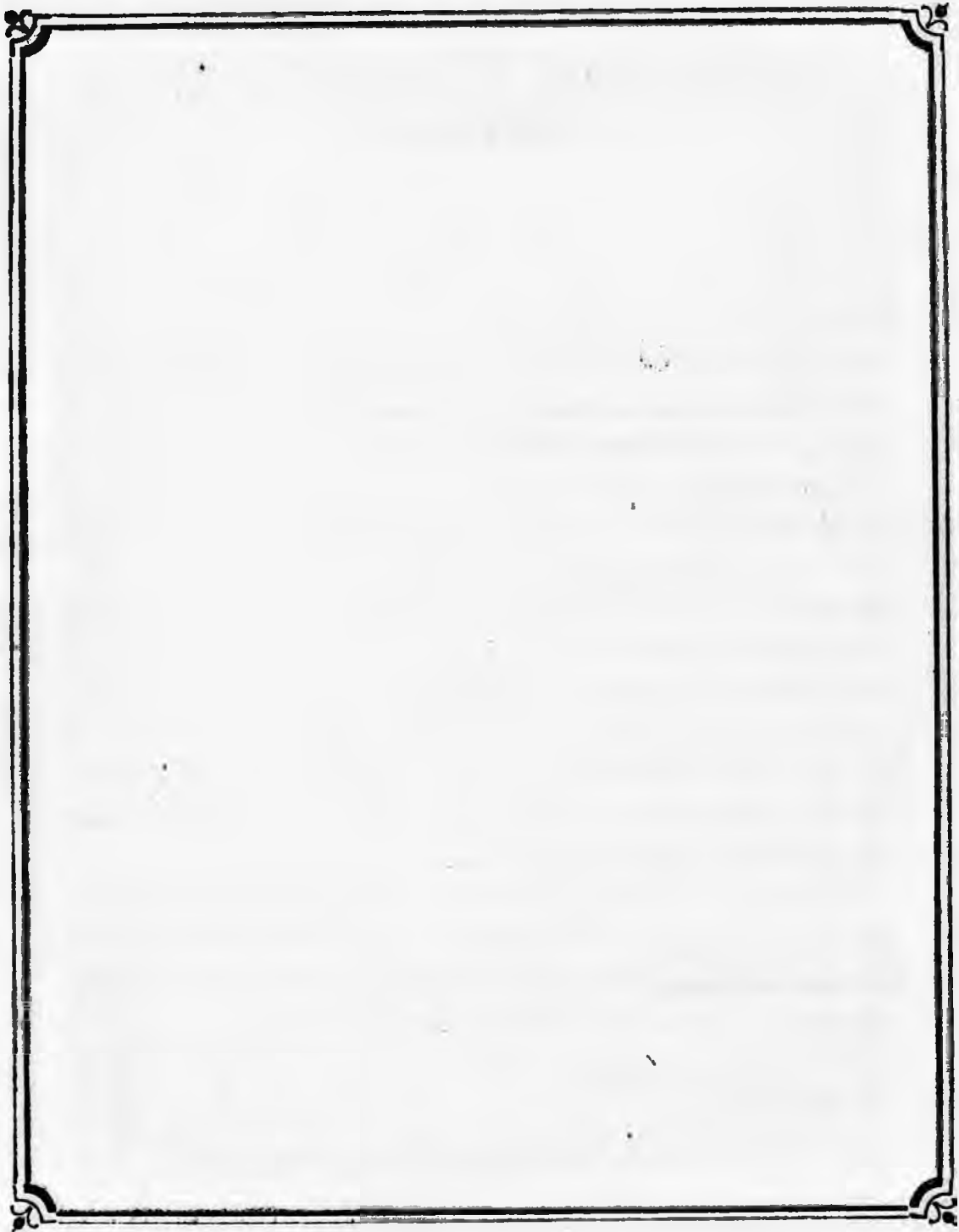
P R E F A C E .

THE present Editor of "OPPEN'S POSTAGE STAMP CATALOGUE," on submitting the Eleventh Edition for public approval, begs to say that continued revision has corrected some inaccuracies in the descriptions and colours of stamps. Many errors in date have been amended, all new issues inserted up to the present time, and a few non-existent specimens discarded.

Little mention is made of essays and none at all of forgeries: so very many of the former, and, we regret to add, of the latter also, are rife, that a partial notice would be incomplete, and a full one exceed our bounds. The valuable work of Berger Levrault, just published, on essays, and that of Pemberton or Stourton on forgeries, should be in the hands of every postage-stamp collector. We had excepted from exile our own essays, from patriotic motives; that of New Brunswick, for its singular history; those of Zurich, as being the first foreign postal emanation; and those of Persia, St. Kitt's Paraguay, and Guatemala, in expectation of probable regular issues: the last two countries are now duly represented.

In conclusion, the Editor and Publisher hope this amended work will find favour in the eyes of the philatelic public, and trust their extended patronage will soon afford opportunity for the adoption of any friendly suggestions towards the improvement of yet another edition.

LONDON, 1868.



CONTENTS.

EUROPE.

	PAGE
AUSTRIA	1
BADEN	3
BAVARIA	4
BELGIUM	<i>ib.</i>
BERGEDORF	5
BREMEN	<i>ib.</i>
BRESLAU, <i>see</i> PRUSSIA	23
BRUNSWICK	6
DANUBIAN PRINCIPALITIES (MOLDAVIA and WALLACHIA)	<i>ib.</i>
DANUBIAN STEAM NAVIGATION COMPANY	7
DENMARK	<i>ib.</i>
DRESDEN, <i>see</i> SAXONY	25
FINLAND	8
FRANCE	<i>ib.</i>
GREAT BRITAIN AND IRELAND	9
GREECE	18
HAMBURG, Free City of	<i>ib.</i>
HANOVER	14
HELIGOLAND	15
HOLLAND	<i>ib.</i>
IONIAN ISLES, <i>vide</i> GREECE also	13
ITALY	15
LEVANT	16
LIVONIA, <i>vide</i> RUSSIA also	<i>ib.</i>
LÜBECK	17
LUXEMBOURG	<i>ib.</i>
MALTA	18
MECKLENBURG-SCHWERIN	<i>ib.</i>
MECKLENBURG-STRELITZ	<i>ib.</i>
MODENA	19
NAPLES	<i>ib.</i>
NORTH GERMAN POSTAL DISTRICT	20
NORWAY	<i>ib.</i>
OLDENBURG, Grand Duchy	<i>ib.</i>
PAPAL STATES	21

	PAGE
PARMA	22
POLAND	<i>ib.</i>
PORTUGAL	23
PRUSSIA	<i>ib.</i>
ROMAGNA	24
RUSSIA	<i>ib.</i>
SARDINIA	25
SAXONY	<i>ib.</i>
SCHLESWIG AND HOLSTEIN	26
SERVIA	27
SICILY	<i>ib.</i>
SPAIN	<i>ib.</i>
SWEDEN	29
SWITZERLAND	30
THURN AND TAXIS—POSTAL CONVENTION. <i>a.</i> NORTHERN STATES	32
<i>b.</i> SOUTHERN STATES	<i>ib.</i>
TURKEY	33
TUSCANY	34
VENETIA	2
WURTEMBERG	34

ASIA.

CASHMERE	35
CEYLON	<i>ib.</i>
EAST INDIES	36
HONG-KONG	<i>ib.</i>
JAVA, &c. (Dutch Colonies)	37
PERSIA	<i>ib.</i>
SHANGHAE	<i>ib.</i>
STRAITS SETTLEMENTS.	37

AFRICA.

CAPE OF GOOD HOPE	38
EGYPT	<i>ib.</i>
LIBERIA	<i>ib.</i>
MAURITIUS	39
NATAL	<i>ib.</i>

	PAGE
ORANGE FREE STATE	40
RÉUNION	39
ST. HELENA	40
SIERRA LEONE	ib.

NORTH AMERICA.

BRITISH COLUMBIA AND VANCOUVER'S ISLAND	ib.
CANADA	ib.
CONFEDERATE STATES	41
NEW BRUNSWICK	ib.
NEWFOUNDLAND	42
NOVA SCOTIA	ib.
PRINCE EDWARD'S ISLAND	43
UNITED STATES OF NORTH AMERICA	ib.
SPECIAL OR PRIVATE OFFICES	45

CENTRAL AMERICA.

COSTA RICA	54
GUATEMALA	ib.
HONDURAS (BRITISH)	ib.
HONDURAS (REPUBLIC)	ib.
MEXICO	55
NICARAGUA	ib.
SALVADOR	ib.

SOUTH AMERICA.

ARGENTINE CONFEDERATION	56
BOLIVIA	ib.
BRAZIL	ib.
BRITISH GULANA	57
BUENOS AYRES	58
CHILI	ib.
CORRIENTES	59
ECUADOR	ib.
LA GUAIRA (<i>see</i> VENEZUELA)	62
MONTVIDEO	59

	PAGE
NEW GRANADA	60
PACIFIC OCEAN STEAM NAVIGATION COMPANY	61
PARAGUAY	<i>ib.</i>
PERU	<i>ib.</i>
VENEZUELA	62

WEST INDIES.

ANTIGUA	<i>ib.</i>
BAHAMAS	<i>ib.</i>
BARBADOS	63
BERMUDAS	<i>ib.</i>
CUBA	<i>ib.</i>
GRENADA	64
GUADALOUPE	<i>ib.</i>
JAMAICA	<i>ib.</i>
MARTINIQUE	<i>ib.</i>
NEVIS	<i>ib.</i>
ST. DOMINGO	65
ST. KITT'S	<i>ib.</i>
ST. LUCIA	<i>ib.</i>
ST. THOMAS, ST. JOHN, ST. CROIX	<i>ib.</i>
ST. VINCENT	66
TRINIDAD	<i>ib.</i>
TURK'S ISLAND	<i>ib.</i>
VIRGIN ISLANDS	<i>ib.</i>

AUSTRALASIA AND POLYNESIA.

NEW CALEDONIA	67
NEW SOUTH WALES	<i>ib.</i>
NEW ZEALAND	68
PHILIPPINE ISLANDS	69
QUEENSLAND	<i>ib.</i>
SANDWICH ISLANDS	<i>ib.</i>
SOUTH AUSTRALIA	70
TASMANIA, OR, VAN DIEMEN'S LAND	71
VICTORIA	<i>ib.</i>
WESTERN AUSTRALIA	72

CATALOGUE OF STAMPS.

EUROPE.

(All Stamps are rectangular unless otherwise specified.)

AUSTRIA.

ISSUE OF 1850.—Arms (double-headed eagle, crowned) on shield; foliage at side, and crown on top. Yellow, orange, 1 kreuzer. Black, 2 kr. Red, 3 kr. Dark brown, yellow brown, 6 kr. Blue, 9 kr.

ISSUE OF 1858.—Embossed profile of Emperor to left; ornamental work round, different in each stamp. Yellow, orange, 2 kr. Black or green, 3 kr. (with numbers in corners). Vermilion, 5 kr. Light brown, 10 kr. Blue, 15 kr. (with numbers in upper corners).

ISSUE OF 1861.—Oval: similar, to right, in frame composed of engine-turned lines; "Kreuzer" at top, and figure denoting value at bottom, in small oval. Pale yellow, 2 kr. Pale green, 3 kr. Red, 5 kr. Brown, 10 kr. Blue, light and dark, 15 kr.

ISSUE OF 1863.—Oval: embossed double-headed eagle crowned, in frame similar to 1861 issue. Pale yellow, 2 kr. Pale green, 3 kr. Rose, red, 5 kr. Blue, 10 kr. Light brown, 15 kr.

ISSUE OF 1867.—Square: Emperor to left in circle; value below. Values and colours as before, with the addition of 25 kr. violet. Larger type. Pale salmon, 50 kr. The same, values in *soldi* for postal circuits employing that denomination.

ENVELOPES.

ISSUE OF 1861.—Oval: embossed, similar to adhesive 1861 issue. Pale green, 3 kr. Red, 5 kr. Brown, 10 kr. Blue, 15 kr. Orange, 20 kr. Dark brown, 25 kr. Violet, 30 kr. Light brown, 35 kr.

ISSUE OF 1863.—Oval: embossed, similar to adhesive 1863 issue. Pale green, 3 kr. Pink, 5 kr. Blue, 10 kr. Light brown, 15 kr. Violet, 25 kr.

ISSUE OF 1867.—Square. Values and colours as before. Type similar to the labels. Larger type. Pale salmon, 50 kr. The same in *soldi* as above.

CATALOGUE.

NEWSPAPER STAMPS.

ISSUE OF 1851.—INLAND POSTAGE. Square: profile of Mercury to left, in square frame, inscribed "K. K. Zeitungs post Stämpel." Blue, 1 kreuzer. Yellow, 10 kr. Pale red, 50 kr. 1856.—Deep red, 10 kr.

ISSUE OF 1858.—INLAND POSTAGE. Embossed profile of Emperor to left. Blue, 1 kr.

ISSUE OF 1860.— Do. The same, lilac.

ISSUE OF 1860.—INLAND POSTAGE. Similar to 1858; to right, instead of left. Grey, lavender, 1 kr. (No value specified on any of the preceding journal stamps.)

ISSUES OF 1850-58.—FOREIGN NEWSPAPER DUTY. Square: double-headed eagle, crowned, in square frame, inscribed "Kais. Kön. Zeitungs Stämpel;" small circle in each corner. Blue, *black*, 1 kr. *Red*, brown, green, 2 kr. Brown, *red*, 4 kr.

ISSUE OF 1863.—Octagon: embossed double-headed eagle, in oval frame, inscribed "K. K. Zeitungs post Stœmpel." Pale violet, 1 kr. (Not specified.)

ISSUE OF 1867.—Rectangular: head of Mercury in circle. Pale lilac, 1 kr.

LOCALS.

LEITMERITZ EXPRESS COMPANY.—Rectangular, 5 kr. Square, 10 kr. Irregular octagon, 15 kr. Triangular, 25 kr. Octagon, 50 kr. These stamps are issued each on eleven differently coloured papers, forming 55 varieties.

AUSTRIAN ITALY (LOMBARDO-VENETIA).

(Now superseded by the ITALIAN.)

ISSUE OF 1850.—Double-headed eagle, crowned; foliage at side, and crown on top. Orange, yellow, 5 centesimi. Black, 10 c. Red, 15 c. Dark brown, yellow-brown, 30 c. Blue, 45 c.

ISSUE OF 1858.—Embossed profile of Emperor to left; ornamental work round, different in each stamp. Yellow, 2 soldi. Black, 3 s. (with numbers in corners). Vermilion, 5 s. Brown, 10 s. Blue, 15 s. (with numbers in upper corners).

The *black* 1 kr. and *red* 2 kr. and 4 kr. journal stamps noted above in *italics* were for Lombardo-Venetia; the red was continued for Venetia only.

VENETIA ALONE.

ISSUE OF 1861.—Oval: Emperor's profile, to right. Red, 5 s. Brown, 10 s. The 2 s., 3 s. and 15 s. were printed, but not issued.

Similar to 1858 issue, to left. Light green, 3 s.

ISSUE OF 1863.—Oval: embossed double-headed eagle, in frame composed of

engine-turned lines. "Soldi" above; and figure denoting value at bottom, in oval. Pale yellow, 2 s. Pale green, 3 s. Pink, 5 s. Blue, 10 s. Light brown, 15 s.

ENVELOPES.

ISSUE OF 1861.—Oval: embossed profile of Emperor to right; figure denoting value at bottom, in small oval. Light yellow, 2 s. Pale green, 3 s. Red, 5 s. Brown, 10 s. Blue, 15 s. Orange, 20 s. Dark brown, 25 s. Violet, 30 s. Light brown, 35 s.

ISSUE OF 1863.—Oval: embossed, similar to adhesive 1863 issue. Pale green, 3 s. Pink, 5 s. Blue, 10 s. Light brown, 15 s. Violet, 25 s.

BADEN.

ISSUE OF 1850.—Square: figure denoting number of kreuzers in circle in centre; inscribed "Baden" above; date (6th April, 1850) on right side; black printing on coloured paper. Buff, white, 1 kreuzer. Green, blue, yellow, 3 kr. Yellow, green, 6 kr. Pink, 9 kr.

ISSUE OF 1860.—Square: coat-of-arms, with crown and supporters, on ground composed of fine horizontal lines; inscribed "Baden" at top; "Freimarke, Postverein" at sides. Black, 1 kr. Blue, light and dark, 3 kr. Yellow, orange-red, 6 kr. Pink, 9 kr.

ISSUES OF 1862-65.—Square: similar to 1860 issue; some on lined, and some on white ground. Black, 1 kr. (white). Pink, 3 kr. (white). Blue, 6 kr. (lined). Blue, 6 kr. (white). Brown, 9 kr. (lined). Pale, now dark brown, 9 kr. (white). Green, 18 kr. (white). Yellow, 30 kr. (white).

ENVELOPES.

ISSUE OF 1857.—Oval: embossed profile of Grand Duke to right; value above in words, and in figure in oval at bottom; inscription printed in small type, in yellow, to left of stamp; patterns of frame different in each stamp. Blue, 3 kr. Yellow, 6 kr. Pink, 9 kr. Brown, 12 kr. Red, 18 kr.

ISSUE OF 1862.—Oval: embossed, similar to 1857 issue; inscription to right of stamp. Deep Pink, 3 kr. Blue, 6 kr. Light brown, 9 kr.

STAMPS FOR UNPAID LETTERS.

Square: figure denoting number of kreuzers, with ornamental work on inside of frame; printed in black on yellow paper; "Land Post" above, and "Porto-Marke" at bottom. 1 kr. 3 kr. 12 kr.

BAVARIA.

ISSUE OF 1849.—Square: figure 1, denoting value in kreuzers, in square frame, inscribed "Bayern Franco;" black printing on white paper. 1 kreuzer. There are varieties of this stamp differing in the groundwork on which the figure stands.

ISSUE OF 1851.—Square: large figure denoting value in circle in centre, and small figure in each corner; same inscription as 1849 issue; silk thread runs perpendicularly down the stamp. Rose, 1 kr. Blue, 3 kr. Brown, 6 kr. Green, 9 kr. Red, 12 kr. Yellow, 18 kr.

ISSUE OF 1862.—Square: similar in every respect, except the changes in colour. Yellow, 1 kr. Rose, 3 kr. Blue, 6 kr. Stone, 9 kr. Green, 12 kr. Vermilion, 18 kr.

ISSUE OF 1867.—Rectangular; royal arms; "name" above; "kreuzer" beneath; figure of value in each corner; embossed on colour. Green, 1 kr. Pink, 3 kr. Blue, 6 kr. Pale brown, 9 kr. Lilac, 12 kr. Red, 18 kr.

STAMP FOR UNPAID LETTERS.

ISSUE OF 1862.—Figure 3, denoting value in kreuzers; frame inscribed "Bayer Post-tax" at top, and "Von Empfänger Zahlbar" at bottom. Black on white, 3 kr.

LOCALS FOR RETURNED LETTERS.

ISSUES OF 1866.—Rectangular; arms in oval; black impression; "Commission für Retourbriefe." "Munich." Similar device and inscription. "Bamberg," "Augsburg," "Nurnburg," "Wurzburg."

BELGIUM.

ISSUE OF 1849.—Portrait of King Leopold; "Postes" at top, and value in words at bottom, printed in white letters. Figures denoting value in circles in upper corners. Dirty brown, 10 centimes. Blue, 20 c.

ISSUE OF 1850.—Similar portrait, in oval frame; "Postes" at top in white letters; value in words at bottom in coloured letters. Dirty brown, 10 c. Blue, 20 c. Red, 40 c.

ISSUE OF 1860.—Exactly similar to 1850 issue. Green, light and dark, 1 c.

ISSUES OF 1865-66.—Profile of King to left in circle; "Postes" above; value below. Brown, 30 c. Lilac, 1 franc. Grey, 10 c. Blue, 20 c. Pink, 40 c.

ISSUE OF 1866.—Belgian arms; "Postes" above; value in cipher at the sides. Grey, 1 c. Brown, 5 c.

ISSUE OF 1867.—The same. Blue, 2 c. In preparation, 4 c., 6 c.

BERGEDORF (superseded, see p. 20).

ISSUE OF 1861.—Square: the size of stamp increasing in proportion to value; half eagle and half towers in circle, with a letter at each corner; black printing on coloured paper. Blue, violet, $\frac{1}{2}$ schilling. White, 1 s. Yellow, $1\frac{1}{2}$ s. Black, or blue on pale pink paper, 3 s. Brownish orange, 4 s.

BREMEN (superseded, see p. 20).

ISSUE OF 1855.—CITY ONLY. Arms (key in shield), with crown, large figure denoting value on each side of shield, and small figures in each corner. Black on slate-coloured paper, 3 grote.

ISSUE OF 1855.—Key in oval frame; Roman figure denoting value in lower corners. Green, 5 s. gr.

Key on shield, crowned; figure in oval frame on each side; "Franco-marke" at top; black printing on coloured paper. Pink, 5 gr. Yellow, 7 gr.

ISSUE OF 1861.—Key in oval frame, with wavy border; figures denoting value in corners. Black on white, 10 gr.

ISSUE OF 1863.—Key in oval frame, surrounded by rays; figures denoting value in corners. Yellow, orange-red, 2 gr.

ENVELOPE.

CITY ONLY. Oval: arms, crown inscribed "Stadt-post-amt, Bremen," with "Franco" on the lower left-hand corner of envelope, on white or blue paper. (Stamped by hand.)

BRUNSWICK (superseded, see p. 20).

ISSUE OF 1852.—Oblong: arms (horse and crown); figures denoting value in oval on each side; curved label at top, inscribed "Braunschweig," and at bottom value in words. Pink, 1 silbergroschen. Blue, 2 s. gr. Vermilion, 3 s. gr.

ISSUES OF 1853-56.—Oblong: similar to 1852 issue, but printed in black on coloured paper. Brown, $\frac{1}{4}$ s. gr. (3 pfennige). White, $\frac{1}{2}$ s. gr. (4 pf.). Pale yellow, 1 s. gr. Dark blue, 2 s. gr. Pink, sometimes a light brown tint, 3 s. gr.

ISSUE OF 1857.—Square: divided into quarters, each quarter forming a separate stamp, and having a crown over, $\frac{1}{2}$ gute groschen. Brown, 3 pf.

ISSUE OF 1862.—Oblong: similar to 1852 issue. Black on green paper, $\frac{1}{4}$ groschen. Yellow on white, 1 gr. Pink on white, 3 gr.

ISSUE OF 1865.—Oval: arms, coloured impression. Black, $\frac{1}{4}$ g. Deep pink, 1 g. Blue, 2 g. Light brown, 3 g.

ENVELOPES.

ISSUE OF 1857.—CITY ONLY. Circular: inscribed "St. P. Fr.;" hand-stamped; value not indicated. Reddish brown; on dark blue, light blue, pink, green, yellow, and white papers ($\frac{1}{2}$ s. gr.).

ISSUE OF 1860.—Oval: arms (horse and crown); value in words at top, and figure in oval at bottom; patterns of frame of each stamp different; inscription printed in small type in blue, to left. Extra sized. Yellow, 1 s. gr. Blue, 2 s. gr. Pink, 3 s. gr. The same in deeper tints and smaller envelopes.

ISSUE OF 1865.—Small oval: arms. Deep pink, 1 g. Blue, 2 g. Light brown, 3 g.

DANUBIAN PRINCIPALITIES.

MOLDAVIA.

ISSUE OF 1854.—Circular: woodcut, bull's-head, star, and post-horn. Green, on green tinted paper, 54 paras. Blue on blue, 81 p. Blue on pink, 108 p.

ISSUE OF 1859.—Similar: rectangular, corners rounded "Porto Scrisorci." Blue, 40 p. Red, 80 p.

MOLDO-WALLACHIA.

ISSUE OF 1862.—Bull's-head, star, horn, and double-headed eagle, inscribed with "Franco Scrisorci," and value. Yellow, orange, 3 p. Red, rose, 6 p. Blue, various shades, 30 p.

ISSUE OF 1865.—Head of Prince Couza to right. Yellow, Orange, 2 parale. Blue, 5 p. Red, 20 p.

ISSUE OF 1866.—Head of Prince Charles to right. Black on colour. Yellow, Lemon, 2 p. Blue, 5 p. Red, 20 p.

ISSUE OF 1866.—Same head. Colour on white. Orange, 2 bani. Blue, 4 b. Pink, 18 b.

NEWSPAPER STAMP (MOLDAVIA).

ISSUE OF 1862.—Similar to 1859 issue, but inscribed "Porto Gazetei." Black on white, 5 p.

DANUBIAN STEAM NAVIGATION COMPANY.

ISSUE OF 1866.—For *too late* letters. Oblong; figure of value within oblong inscribed oval; wavy lines completing the rectangle. Bright red, 17 soldi. Lilac, 10 s.

DENMARK (including SCHLESWIG-HOLSTEIN till 1864).

ISSUE OF 1851.—Square: crown over crossed sceptre and sword, enclosed in wreath; angles between wreath and outer frame granulated; inscribed "Kongeligt Post Frimærke; Fire R. B. S.;" Mercury's staff on top label, and post-horn in each corner; angles composed of wavy lines. Various shades of brown, 4 R. B. S.

ISSUE OF 1852.—Square: figure denoting value in circular frame, inscribed "K. G. L. Post Frimærke," with crown and post-horn. Blue, 2 rigsbank-skilling.

ISSUE OF 1860.—Square: crown over crossed sceptre, and sword enclosed in wreath; angles between wreath and outer frame granulated; inscribed "K. G. L. Post F. R. M.;" Mercury's staff on each label, and post-horn in each corner. Blue, 2 skilling. Brown, brown on yellow lined paper, reddish brown, 4 sk. Green, 8 sk. Lilac, 16 sk.

Similar to 1860; angles composed of wavy lines. Brown, 4 sk. Green, 8 sk.

ISSUE OF 1864-66.—Crown over crossed sword and sceptre in lined oval, sur-

rounded by white oval band; inscribed "K. G. L. Post F. R. M." at top; value at bottom, and figure in each angle of stamp. Blue, 2 sk. Lilac, 3 sk. Red, deep pink, 4 sk. Greenish, 16 sk.

ENVELOPES, 1865.—Oval impression: arms; sword, sceptre, and crown in white relief on coloured ground. Blue, 2 sk. Red, 4 sk. The same without sk.

FINLAND.

ISSUE OF 1860.—Oval: hand-stamped; lion over two post-horns; value at sides. Blue, 5 kopecs. Pink, 10 k.

ISSUE OF 1862.—Rectangular: lion, with drawn scimitar on shield, under crown, in oval frame; value at top and bottom; printed on tinted paper. Blue, 5 k. Pink, 10 k. Light and dark shades of each.

ISSUE OF 1866.—Arms as above; brown on lilac, 5 pen. Black on buff, 10 p. Azure on pale blue, 20 p. Pink on pale pink, 40 p. Black on green, 8 p.

ISSUE OF 1867.—Arms in rectangle: value in three languages, inscribed in frame; figures at angles. Brown, 1 mark.

LOCAL FOR HELSINGFORS, 1866.—Oval, green with red diagonal band; 10 penni.

LOCAL FOR TAMMERFORS, 1866.—OVAL, green with blue diagonal band; 12 p.

ENVELOPES.

ISSUE OF 1846.—Oval: arms on crowned shield; post-horn on each side; value on label at bottom; outside oval; inscribed at top "Porto Stempel." Pink, 10 k. Slate, black (reprint), 20 k.

Oval-oblong: hand-stamped; arms over two post-horns; value at sides. Blue 5 k. Pink, 10 k. Slate, black (reprint), 20 k.

ISSUE OF 1862.—Similar device to 1862 adhesive issue. Blue, 5 k. Pink, 10 k.

FRANCE.

REPUBLIC.

ISSUES OF 1849-50.—Profile of Liberty to left, crowned with wreath composed of ears of wheat and grapes; in circle, some printed on a pale tinted paper. Yellow-

brown, 10 centimes. Light and dark green, 15 c. Black, 20 c. Blue, 25 c. Orange, 40 c. Vermilion, dark pink, lake, light brown, 1 franc.

ISSUE OF 1852.—Profile of President Napoleon to left in circle. Yellow-brown 10 c. Blue, 25 c.

EMPIRE.

ISSUES OF 1853-54, 1860.—Profile of Emperor to left in circle; "Empire Franc." at top, and "Postes" at bottom, with value; some on white, and some on tinted paper. Dark sap-green, 1 centime. Green, light and dark, 5 c. Yellow-brown, 10 c. Blue, 20 c. Blue, light and dark, 25 c. Orange, 40 c. Lake, carmine, 80 c. Lake, carmine, 1 franc.

ISSUE OF 1862-68.—Profile of Emperor to left in circle, crowned with laurel wreath; "Empire Français" at top. Chocolate, 2 c. Pale slate, 4 c. Yellow-brown, 10 c. Blue, 20 c. Brown, 30 c. Pink, 80 c.

STAMPS FOR UNPAID LETTERS.

ISSUE OF 1859-62.—Figure denoting value in centimes; inscribed "Chiffre postes taxe," and "à percevoir." Black on white, 10 c. (square, large, and small). 10 c. (oblong). 15 c. (square).

Envelopes are in preparation for issue. Head of Emperor to left, plain or embossed; imperial crown, with or without eagle, above; value beneath; inscriptions at sides.

GREAT BRITAIN.

ISSUE OF 1840.—Profile of Queen to left; "Postage" at top; value in words at bottom; letters in bottom corners black (with "V. R." in top corners). Black, brown on green paper, brown, red, 1d. Blue, blue on blue paper, 2d. Blue, with white line on top of value and at bottom of postage, 2d. Blue, with letters in each corner and lines, 2d.

Octagon: embossed profile of Queen to left; thread running perpendicularly through the stamp. Violet, 6d. Brown, 10d. Green, 1s.

ISSUES OF 1855-56.—Profile of Queen to left. Pink, 4d., on white and blue (in circular frame). Lilac, 6d. (in circular frame). Green, 1s. (oval frame).

ISSUE OF 1862.—Profile of Queen to left, in various-shaped frames; letters in each corner. Pink, 3d. (trifoliate). Red, 4d. (circular). Lilac, 6d. (circular). Yellowish brown, 9d. (wavy circle). Green, 1s. (oval).

ISSUE OF 1864.—Profile of Queen to left; postage at top; letters in each corner; value in words at bottom. Deep red, 1d.

ISSUE OF 1865.—Nearly similar; corner letters much larger. Pink, 3d. Red, deep red, 4d. Lilac, 6d. Yellowish brown, 9d. Green, 1s.

ISSUE OF 1867.—Queen crowned to left, in circle; "Postage" above, value below; letters at angles. Nearly square. Brown, 10d. Large rectangle. Pink, 5s. Same in pointed oval; value above, "Postage" below. Rectangular. Blue, 2s.

ENVELOPES.

ISSUE OF 1840.—Design printed over sheet (leaving space for address); Britannia centre figure, surrounded by foreigners, &c. Designed by the late W. Mulready, R.A. Black on white, 1d. Blue on white, 2d.

Similar, printed on envelope. Black, 1d. Blue, 2d.

Embossed: profile of Queen to left, in various shapes; on white paper; inscribed "Postage," and the value. Brown, pink, 1d. (oval). Blue, dark blue, 2d. (oval).

Embossed: similar to above, with date of issue, on white, blue, and pale pink, lilac or yellow paper. Brown, pink, 1d. (oval). Blue, 2d. (oval). Deep pink, 3d. (trifoliate). Scarlet, 4d. (circular). Lilac, 6d. (octagon). Green, 1s. (octagon).

Same as last. 5d. (composed of 3d. and 2d. or 4d. and 1d.). 7d. (4d. and 3d. or 6d. and 1d.). 8d. (4d. and 4d. or 6d. and 2d.). 9d. (6d. and 3d.). 10d. (6d. and 4d.). 1s. and 2d. 1s. and 3d. 1s. and 4d. 1s. and 6d. The two stamps are printed side by side.

ESSAYS.—ADHESIVE STAMPS.

ISSUES OF 1840 are found in a great variety of colours.

ISSUES OF 1838-39.—Profile of Queen to left, in trifoliate frame. Lake, 1½d. The same as embossed envelope.

Profile of Queen to left, in scroll-work frame, ground filled in. Pink, 3d.

Large rectangular: star in centre; inscribed "Penny Post," surrounded by a blue oval, and perpendicular red lines.

Number in oval; inscribed "Post Office," with a second oval frame, inscribed "One Penny, Half-ounce." Red and blue, and red and green.

Square: "½ oz. 1d." on a small, red, circular disc, in oval black disc, surrounded by three close, concentric, engine-turned frames; the middle one inscribed, in pale letters, "Post Office Permit," and "To carry matter not exceeding in weight" below. Printed in black on white paper, with red unequal blotches across the oval frames.

Post Office cover, with oblong centre, "V. R.," and crown, and "London District Post, to carry not exceeding six ounces." Green, 2d.

Middle-sized label: crown in a white oval disc, surrounded by three concentric oval frames; the inner and outer with white engine-turned pattern; the middle one the narrowest, dark; inscribed "Principle suggested, Beaufort House," in white letters; all in an oblong, erect, outer frame, with "A. B. C. D." in square dark spots at the angles, and "V. R." in oval white disc at the sides. Printed in blue ink.

Like the former, but printed in two colours; viz., blue, with four radiating lanceolate, and four triangular red blotches.

Small label: "1d.," italic type, in a small, white, transverse oval, surrounded by two concentric oval frames; the inner with white engine-turned lines, the outer one coloured; inscribed, in white letters, "Post paid" above, "Beaufort House" below; all in an oblong transverse outer frame. Printed in black ink, with four lanceolate, and four triangular red blotches. (This is really *one* portion of a stamp near four inches long by $7\frac{1}{2}$ -10ths broad, composed of seven compartments, too elaborate for description, two only being alike.)

EMBOSSSED STAMPS.

1. Embossed white profile of the Queen to the right, without any tiara, and with a dependent curl behind, in two oval concentric frames, with engine-turned, white, embossed lines; the outer frame interrupted at the upper part by a white-lined label, with "Paid" in white, embossed, capital letters. Printed in red, green, blue, and other coloured inks, on a white and coloured note-paper, at the left upper corner of envelopes, and on card, and at the back of "Harwood's Envelope."

2. Like the former, but surrounded with a third outer concentric frame, and with the label on the upper part of the second or middle frame, without any letters, and dark. Printed in black ink on paper and on card.

3. A small stamp. Embossed white profile of the Queen to the left, with tiara, and without any pendent curl behind, in oval frame, with engine-turned embossed lines and outer edges, without any inscription.

4. A small stamp, like the former, but the upper half of the frame with "Postage, One Penny," inscribed in the embossed lines, in small, dark, sunken, capital letters. Blue ink on card and on paper.

5. Small stamp, like the former, but the upper half of the frame uniformly

dark, without any embossed lines, and inscribed, in embossed, white, capital letters, "Postage, One Penny." Blue, brown, and red ink, on card and on paper.

6. Large stamp, like No. 3, but enclosed in a second oval frame, with white, embossed, engine-turned line; inscribed in large, white, coloured-edged, capital letters, "Postage, One Penny;" and with a spreading group of the rose, shamrock, and thistle in the middle beneath. Printed in dark or pale blue and rose-coloured ink on paper and on card; generally surrounded by a coloured ring, showing the size of the die.

7. A large stamp, exactly like the preceding, but the outer frame interrupted at the upper half, and the plain coloured label inscribed, in smaller, white, embossed, capital letters, "Postage, One Penny." Rose-coloured ink on paper or on card, and generally surrounded with a blur of coloured ink, showing the size of the die.

8. A large stamp, exactly like the preceding, but the group of emblems below is more condensed, and the upper part of the outer frame is plain, dark coloured, without any embossed white lines; inscribed, in white raised capitals, "Postage, 1d. Half-ounce." Red, blue, or brown ink, on card, or on white or coloured paper.

9. A small stamp, with embossed white profile of the Queen to the left, with a tiara, and a dependent curl behind, enclosed in an oval frame, with white, raised, engine-turned lines. Black, blue, and red ink, on paper or on card.

10. A small stamp, like the preceding, but the frame inscribed with "Postage, One Penny," in dark, sunken, thick, capital letters, as wide as the frame. Blue, brown, or red ink, on card or on paper.

11. A small stamp, like the preceding, but "Postage, One Penny," in rather smaller and thinner, sunken, dark, capital letters. Black, blue, brown, and red ink, on card or on paper.

12. A small stamp, like the preceding, but "Postage, One Penny," in small, thick, sunken, dark, capital letters, not half the width of the frame. Blue, red, and black ink, on card or on paper.

13. A larger stamp, like the preceding, but in a double, oval, concentric frame; the outer frame with the rose, shamrock, and thistle below; the upper half dark, sunken, without any embossed lines, and inscribed, in moderate-sized, white, embossed capitals, "Postage, One Penny." Red, brown, and black ink, on card or paper.

14. A circular stamp, with a white, embossed profile of the Queen to left, in her tiara, and dependent curl behind; and of Prince Albert behind, in a circular

coloured disc, surrounded by a double linear, raised, ring edge. Embossed on the angles of envelopes. An inscribed frame could have been added if it had come into use.

15. A large stamp, with oval disc, and a crown between "V. R." above; with "Post Office," in a curved band, rather above the centre; and "One Penny, Half-ounce," below; all enclosed in an oval, embossed, lined frame. Printed in blue ink on card and paper.

GREECE (now including IONIAN ISLES).

ISSUE OF 1861.—Profile of Mercury to right in circle; inscribed "ΕΑΑ. ΓΡΑΜΜ" at top, and value at bottom. Printed in colour on tinted paper. Brown, two shades, 1 lepton. Stone, 2 l. Green, 5 l. Red, 10 l. Blue, 20 l. Lilac on blue, 40 l. Rose-red, 80 l.

ISSUE OF 1862.—Similar to 1861; printed number, denoting value in lepta, at back. 5 l. 10 l. 20 l. 40 l. 80 l. The colours vary greatly in tint. The 40 l. is now brown.

IONIAN ISLES (now superseded by the GREEK).

ISSUE OF 1860.—Profile of Queen Victoria to left, in garter, inscribed "ΙΟΝΙΚΟΝ ΚΡΑΤΟΣ." Value not denoted. Blue. Red. Yellow, on yellow paper.

HAMBURG (superseded, see p. 20).

ISSUE OF 1859.—Figure denoting value on three turrets; inscribed "Hamburg" at top, "Postmarke" at bottom, and value in words at sides. Black, $\frac{1}{2}$ schilling. Brown, 1 s. Red, 2 s. Blue, 3 s. Green, 4 s. Orange, 7 s. (now mauve). Yellow, 9 s.

ISSUE OF 1863.—Same device as 1859. Mauve, drab, $1\frac{1}{2}$ s. Green, $2\frac{1}{2}$ s.

ISSUE OF 1866.—Nearly similar, irregular octagon. Pink, $1\frac{1}{2}$ s.

ISSUE OF 1867.—Same as 1859. Blue green, $2\frac{1}{2}$ s.

LOCALS.

These are 1 s. and $\frac{1}{2}$ s. in value, bearing the names of Scheererbeck, Hamer, Diemen, Lafrenz, Krantz, and Hamonia, of which the first three only are genuine.

Scheererbeck. 1862, Hamburg arms. 1863, Postman. 1863, Figure of value, $\frac{1}{2}$ s. and 1 s. Each impression and value in ten or more distinct shades of colour.

ISSUE OF 1868.—See p. 20.

Hamer. Inscription and figure of value in circle. Various colours. Envelopes: same device. Red and rose, on white or yellow paper.

Charles Van Diemen. Inscription over figure of value. Coloured impression. Lilac, 1 s. Yellow, 2 s. Plum-brown, 3 s. Green, 4 s. Blue, 6 s. Red, 8 s.

ENVELOPES.

ISSUE OF 1866.—Arms in irregular octagon. Black, $\frac{1}{2}$ s. Lilac, $1\frac{1}{2}$ s. Pink, $1\frac{1}{2}$ s. Orange, 2 s. Blue, 3 s. Green, 4 s. Mauve, 7 s.

HANOVER (superseded, see p. 20).

ISSUE OF 1851.—Royal arms over shield, containing figure denoting value; inscribed "Hannover" at bottom; black printing on coloured paper. Green, 1 guten groschen. Rose or pink, $\frac{1}{8}$ thaler. Blue or lilac, $\frac{1}{8}$ t. Yellow, $\frac{1}{8}$ t. Proofs in various colours.

ISSUE OF 1858.—Similar to 1851 issue; black printing on white paper, covered with coloured check-work pattern, sometimes vertical and sometimes horizontal. Green, 1 g. g. Lake, $\frac{1}{8}$ t. Blue, $\frac{1}{8}$ t. Yellow, $\frac{1}{8}$ t. Pink, 3 pfennige (lined oval, containing crown and figure 3, with inscription running over the top).

ISSUE OF 1859.—Similar to last stamp, without the check-work pattern (now green).

Profile of King to left in circle; inscribed with value at top, and "Hannover" at bottom. Deep light and pink, 1 groschen. Blue, 2 g. Orange, 3 g.

Crown and horn; "Hannover" at top, value at bottom. Black printing on white paper, $\frac{1}{2}$ g.

ISSUE OF 1861.—Profile of King to left, in circle; inscribed with value at top, and "Hannover" at bottom. Stone, 3 g. Green, 10 g.

ENVELOPES.

ISSUE OF 1850.—Black ornamentation on both sides of yellow envelope; post-horn in the left-hand lower corner, hand-stamped in blue. "Bestellgeld-frei" inscribed.

ISSUE OF 1857.—Oval: profile of King to left; inscribed "Hannover" at top, and figure denoting value at bottom. Green, 1 g. gr. Pink, 1 silbergroschen. Blue, 2 s. gr. Yellow, 3 s. gr.

ISSUE OF 1859.—Oval: similar to 1857 issue; figures at sides, denoting value; inscription to left of stamp. Deep pink, 1 groschen. Blue, 2 g. Yellow, 3 g.

ISSUE OF 1862.—Oval: similar to 1859 issue; inscription to right of stamp. Deep pink, 1 g. Blue, 2 g. Brown, 3 g.

STAMPS FOR TOWN POSTAGE ONLY.

ISSUE OF 1858.—Circular: embossed trefoil and post-horn, with embossed letters, "Bestellgeld Frei." Green printing on yellow paper.

ISSUE OF 1862.—Circular: embossed horse, with embossed inscription, same as 1858 issue. Green printing on yellow paper.

The Hanoverian stamps were superseded by the Prussian, October 1, 1866.

HELIGOLAND.

ISSUE OF 1867.—Rectangular: profile of Queen Victoria to left, in white relief, on coloured oval; name, right and left, value, above and below, in square frame. Rose-red and green variously disposed: $\frac{1}{2}$ schilling, 1 sch., 2 sch., 6 sch.

HOLLAND.

ISSUE OF 1852.—Profile of King to right, in ornamented oval frame; inscribed "Post Zegel" at top, and value in bottom corners. Blue, light and dark, 5 cents. Red, red on pinkish paper, 10 c. Orange, 15 c.

ISSUE OF 1864-65.—Profile portrait of King to left, in oval wreath; figures in upper corners. "Post Zegel" at bottom. Blue, 5 c. Red, 10 c. Orange, 15 c.

ISSUE OF 1867-8.—Head of King to left in circle; "Nederland" above, value below. Blue, 5 c. Red, 10 c. Yellow ochre, 15 c. Dark green, 20 c. Violet, 25 c. Gold, 50 c.

ITALY. (The first four issues served SARDINIA and PIEDMONT only before 1861).

ISSUE OF 1851.—White profile of King to right, in oval frame; inscribed "Franco Bollo Poste" in white. Black, 5 cents. Blue, 20 c. Pink, 40 c.

ISSUE OF 1852.—Similar to 1851 issue; embossed on coloured paper. Green, blue, 5 c. Blue, dark bluish purple, 20 c. Red, 40 c.

ISSUE OF 1855.—Similar to 1851 issue; with the profile and oval frame only embossed; printed on coloured paper. Green, light and dark, 5 c. Blue, 20 c. Red, 40 c.

ISSUE OF 1856.—Similar to 1855 issue; inscription in white letters. Green, 5 c. Brown, very varied shades, 10 c. Blue, 20 c. Red, 40 c. Yellow, tawny, 80 c. Bronze, 3 lire.

ISSUE OF 1863.—Similar to 1856 issue. Blue, 15 c.

Profile of King to left, in lined oval frame; value in small circles in corners. Blue, 15 c.

ISSUE OF 1864.—Profile of King to left, on tinted ground, in oval frame; patterns in angles of each stamp, different; "Poste Italiana" in top of oval, value in words at bottom. Dark greenish grey, 5 c. Orange, 10 c. Light blue, 15 c. (cancelled and re-marked 20 c.) Brown, 30 c. Rose, 40 c. Lilac, 60 c. Bright red, 2 lire.

ISSUE OF 1867.—Same in square frame. Blue, 20 c.

NEWSPAPER STAMPS.

ISSUE OF 1861.—Embossed figure denoting value in oval frame; inscribed "Franco Bollo Giornali Stanpe." Black, bluish black, 1 cent. Black, orange, 2 c.

ISSUE OF 1864.—Large white figure 1, with value in words on it, on scroll-work ground. "Poste" at top; "Italiane" at bottom. Light greenish grey, 1 c. Brown, 2 c.

STAMP FOR UNPAID LETTERS.

ISSUE OF 1863.—Oval: label, bearing inscription "Segna Tassa," and value. Yellow, orange (1864), 10 c.

LEVANT.

ISSUE OF 1865.—Rectangular; coloured lithographic impression; steamer in centre; letters above, Russian eagle below. Red on blue latticed background; no value specified; 10 paras. Device varying; Blue on red, value, 2 piastres.

LIVONIA.

CIRCLE OF WENDEN.

EARLIEST ISSUE.—Vignette in small circle, circumscribed "Wenden'sche Kreis-Briefpost." Blue.

ISSUE OF 1862.—Oblong. "Briefmarke des Wenden'schen Kreises." Black letters on pink fancy pattern. (Value, 2 kopecks.)

ISSUE OF 1863.—Rectangular; central oval green; inscription as before. Pink. (2 kopecks.)

ISSUE OF 1864.—Same impression. Griffin in white relief on green central oval. (2 kopecks.)

LÜBECK (superseded, see p. 20).

ISSUE OF 1859.—Double-headed eagle on dotted ground; large figure denoting value in each corner on plain ground. Lilac, $\frac{1}{2}$ schilling. Orange, 1 s. Brown, 2 s. Pink, $2\frac{1}{2}$ s. Black, green, 4 s.

ISSUE OF 1863.—Oval: embossed; double-headed eagle on plain coloured ground. Inscribed "Luebeck" at top on fancy ground, and "Schilling" at bottom; value in figures in ovals at sides. Green, $\frac{1}{2}$ s. Bright red, 1 s. Pink, 2 s. Blue, $2\frac{1}{2}$ s. Light brown, 4 s.

ISSUE OF 1864.—Same as above, but not embossed, and eagle on dotted ground. Brown, $1\frac{1}{2}$ s.

ISSUE OF 1866.—Arms embossed in octagon; Mauve, $1\frac{1}{2}$ s.

ENVELOPES.

ISSUE OF 1863.—Similar to 1863 issue. Inscription printed in brown to left. Green, $\frac{1}{2}$ s. Bright red, 1 s. Pink, 2 s. Blue, $2\frac{1}{2}$ s. Light brown, 4 s.

ISSUE OF 1864.—Similar; inscription to right.

ISSUE OF 1866.—Similar to 1866, adhesive. Yellow inscription to right. Mauve, $1\frac{1}{2}$ s.

LUXEMBOURG.

ISSUE OF 1852.—Profile of King of Holland as Grand Duke to left, in oval frame; figures denoting value in top corners. Black, grey, 10 centimes. Red, orange-red, pink, 1 silbergroschen.

ISSUES OF 1859-63.—Lion and crown in oval frame; figures denoting value on lower sides. Blue, 10 c. Pink, $12\frac{1}{2}$ c. Lilac, 25 c. Different shades of violet, 30 c. Green, $37\frac{1}{2}$ c. Bright red, 40 c.

Similar to above, in circular frame. Orange, reddish brown, 1 c. Black, 2 c. Yellow, 4 c.

ISSUE OF 1866-67.—Brown, 1 c. Lilac, 10 c. Brown, 20 c. Blue, 25 c. Light brown, 37½ c.

MALTA.

ISSUE OF 1860-6.—Profile of Queen Victoria to left, in octagonal frame. Buff, ½d.

ISSUE OF 1862.—Same, on bluish paper.

ISSUE OF 1864.—Orange on white paper.

When stamps of higher prices are required, English stamps are used, with "Malta" printed across them.

MECKLENBURG-SCHWERIN (superseded, see p. 20).

ISSUE OF 1860.—Very small square; crowned bull's head on dotted (now plain) ground; figures in corners denoting value. Red, ¼ schilling.

Large square; crowned bull's head on shield, surmounted by crown; figures in corners denoting value. Yellow, orange, 3 s. Blue, 5 s.

ISSUE OF 1864.—Same as last. Brown, 5 s.

ISSUE OF 1866.—Violet, mauve, 2 s.

ENVELOPES.

ISSUE OF 1860.—Oval: embossed; crowned bull's head on shield, surmounted by crown, on plain coloured ground; value at top in words, and figures in oval at bottom. Red, 1 s. Green, 1½ s. Yellow (now orange) 3 s. Blue, 5 s.

ISSUE OF 1864.—Same as above. Brown, 5 s.

ISSUE OF 1866.—Violet (now lilac) 2 s.

MECKLENBURG-STRELITZ (superseded, see p. 20).

ISSUE OF 1864.—Rectangular: name at sides; armorial bearings embossed in square frame; value above and below; figures at angles. Orange, ¼ silbergroschen. Green, ½ s. gr. Mauve, 1 schilling.

Arms embossed in oval; octagonal frame, with name and value. Carmine, 1 s. gr. Blue, 2 s. gr. Light brown, 3 s. gr.

ENVELOPES.

Arms as above, in octagon; brown inscription on the right. 1 s. gr. 2 s. gr. 3 s. gr.
Colours same as labels.

MODENA (superseded by the ITALIAN).

ISSUE OF 1854.—Eagle under crown between two laurel branches; inscribed "Poste Estensi" at top; value at bottom; black printing on coloured paper. Green (two shades), 5 centesimi. Brown, pink, violet, 10 c. Yellow, 15 c. Pale brown, 25 c. Blue, 40 c. White, 1 lira.

Similar to above. Green, 5 cetrn., 5 cnet. Yellow, 15 cnet. Pale yellow, 25 cetrn., 25 cnet. Blue, 40 cnet., 40 cetrn., 49 cent.

ISSUE OF 1859.—Cross, with crown and collar, between two laurel branches; inscribed "Provincie Modonesi." Green, 5 c. Brown, 15 c. Lilac, violet-purple, 20 c. Pink, 40 c. Orange, 80 c. (Issued by the Provincial Government, and only used for a few months).

NEWSPAPER STAMPS.

Square: eagle under crown in circle; inscribed "Tassa Gazzette." Black, 10 c.
Similar to 1854 issue, with "B. G." (Bollo Gaz.) added to value. Lilac, 9 c.

NAPLES (all now superseded by the ITALIAN).

ISSUE OF 1857.—Rectangular: horse, triple legs, and fleur-de-lis; inside frames differing in shape; the whole series dark pink; inscribed "Bollo della Posta Napoletana," $\frac{1}{2}$ grano (round). 1 g. (square). 2 g. (octagon). 5 g. (square). 10 g. (hexagon). 20 g. (lozenge). 50 g. (oval).

ISSUE OF 1860.—Rectangular: similar to above, in circular frame. Blue, $\frac{1}{2}$ tornese.

Rectangular: white cross in circular frame. Blue, $\frac{1}{2}$ t. (Issued by the Provisional Government).

ISSUE OF 1861.—Profile of King of Italy in relief to right in oval frame; inscribed "Franco Bollo Postale;" small cross in each corner. Green (3 shades), $\frac{1}{2}$ t. Pale brown, $\frac{1}{2}$ g. Black, 1 g. Blue, 2 g. Red, rose, lilac, 5 g. Orange, 10 g. Yellow, 20 g. Grey, violet, 50 g.

NORTH GERMAN POST DISTRICT.

ISSUES OF JANUARY, 1868.—Nearly square: numerals in small central circle; circular inscription, "Norddeutscher Postbezirk;" emblems at angles; value in words below; colour on white. Lilac, $\frac{1}{2}$ groschen. Green, $\frac{1}{2}$ gr. Vermilion, $\frac{1}{2}$ gr. Pink, 1 gr. Blue, 2 gr. Light brown, 5 gr. Same type: envelope. Pink, 1 gr.

Same inscription, *and* value in oval frame; emblems as before; numerals in central oval. Green, 1 kreuzer. Vermilion, 2 kr. Pink, 3 kr. Blue, 7 kr. Light brown, 18 kr.

LOCAL FOR HAMBURG.—Same inscription, and "Stadt Post Brief Hamburg" in similar frame; letters white; no value specified. Puce-brown, $\frac{1}{2}$ schilling.

These sets supersede the issues of Prussia, Saxony, Hanover, Brunswick, Oldenburgh, the Mecklenburgs, Schleswig-Holstein, Bremen, Bergedorf, Lubeck, Hamburg, the Offices of Thurn and Taxis, and that of Prussia, for its southern annexations.

NORWAY.

ISSUE OF 1855.—Crowned lion holding battle-axe, in circle; inscribed "Frimærke." Blue, 4 skilling.

ISSUE OF 1856.—Profile of King to left, in circle; inscribed "Norge" at top; "Frimærke" at each side; value at bottom. Yellow, 2 sk. Lilac, 3 sk. Blue, 4 sk. Lake, 8 sk.

ISSUE OF 1863-66.—Crowned lion holding battle-axe, on shield. "Frimærke" in label on each side; "Norge" at top; value at bottom. Yellow, 2 sk. Lilac, 3 sk. Blue, 4 sk. Pink, 8 sk. Pale brown, 24 sk.

ISSUE OF 1867-68.—Type very similar; numerals repeated; colours as before, 2 sk., 4 sk., 8 sk., 24 sk.

LOCAL FOR DRONTHEIM, 1866.—Small oblong rectangle; inscribed "Thronhjems." "By-Post." Brown, 1 sk.

LOCAL FOR BERGEN, 1866.—Small rectangle; castle; "Bergens" above; "By Post" below. Brown, 2 sk.

OLDENBURG (superseded, see p. 20).

ISSUE OF 1852.—Value denoted on shield, under ducal arms; value on each side, and "Oldenburg" at bottom; black printing on coloured paper. Green, $\frac{1}{2}$ silbergroschen. Blue, $\frac{1}{8}$ thaler. Light rose, $\frac{1}{8}$ t. Yellow, $\frac{1}{8}$ t.

ISSUE OF 1858.—Ducal arms under crown, in oval frame; inscribed "Oldenburg" at top; value at bottom; black printing on coloured paper. Green, $\frac{1}{2}$ groschen. Blue, 1 gr. Rose, 2 gr. Yellow, 3 gr.

ISSUE OF 1860.—Similar to 1858 issue; but coloured impression. Orange, $\frac{1}{2}$ gr. Yellow-green, dark green, $\frac{1}{2}$ gr. Reddish brown, $\frac{1}{2}$ gr. Blue, 1 gr. Red, 2 gr. Lemon, 3 gr.

(The ornamental work on the last two issues differs in different stamps).

ISSUE OF 1862.—Oval: embossed; ducal arms under crown; inscribed "Oldenburg" at top; value at bottom, and in ovals at sides. Green, $\frac{1}{2}$ gr. Orange, $\frac{1}{2}$ gr. Rose, 1 gr. Blue, light and dark, 2 gr. Brownish yellow, 3 gr.

ENVELOPES.

ISSUE OF 1861.—Oval: embossed; ducal arms under crown; inscribed "Oldenburg" at top; value at bottom, and in ovals at sides; inscription printed on envelope to left of stamp in small blue letters. Brown, $\frac{1}{2}$ gr. Blue, 1 gr. Rose, 2 gr. Yellow, 3 gr.

ISSUE OF 1862.—Oval: embossed; similar to above; inscription to right of stamp. Orange, $\frac{1}{2}$ gr. Rose, 1 gr. Blue, light and dark, 2 gr. Brown, 3 gr.

ISSUE OF 1866.—Feldpost. Similar to that of Prussia.

PAPAL STATES.

ISSUE OF 1852.—Crossed keys, surmounted by tiara; inscribed "Franco Bollo Postale;" printed in black on coloured paper; shapes of stamps different.

- (1) Oval. Grey, violet, greenish, $\frac{1}{2}$ (mezzo) bajocco.
- (2) Oval, truncated ends. Pale green, 1 b.
- (3) Oblong. Yellowish green, 2 b. (This stamp differs in size).
- (4) Oval, truncated ends. Light brown, 3 b.
Circular. Yellow ochre, lemon, 4 b.
- (6) Rectangular. Pinkish red, rose, 5 b.
- (7) Octagonal. Neutral tint, 6 b.
Octagonal. Blue, 7 b.
- (9) Octagonal, concave sides. White, 8 b.
Oblong: similar to above; printed in colour. Blue, 50 b. Scarlet, 1 scudo.

CATALOGUE.

ISSUE OF 1867.—Same designs; monetary denominations changed; printed on highly-glazed paper. (3) Green, 2 centesimi. (1) Pale lavender, 3 c. (4) Blue, 5 c. (9) Vermilion, 10 c. (5) Deep red, 20 c. (7) Yellow, 40 c. (2) Pink, 80 c.

PARMA (superseded by the ITALIAN).

Fleur-de-lis, surmounted by crown, in circle; inscribed "Stati Parm." and value. Yellow, 5 centesimi. Scarlet, 15 c. Red-brown, 25 c.

Similar to above; black printing on coloured paper. Yellow, 5 c. White, 10 c. Rose, 15 c. Purple, 25 c. Blue, 40 c.

ISSUE OF 1858.—Fleur-de-lis in oval in shield, crowned with laurel branches at sides; inscribed "Duc di Parma Piac Ecc," and value. Pink, 15 c. Brown, red-pink, 25 c. Blue, 40 c.

PROVISIONAL GOVERNMENT.

ISSUE OF 1859.—Octagonal, concave sides: figure denoting value in centre; type-printed; inscribed "Stati Parmensi." Light green, dark green, 5 centesimi. Brown, 10 c. Blue, 20 c. Red, 40 c. Orange, 80 c.

FOR NEWSPAPERS.

ISSUE OF 1859.—Similar to 1859 issue; printed in black on coloured paper. Carmine, 6 c. Blue, 9 c.

POLAND.

ISSUE OF 1858.—Similar device to Russian 1858 adhesive issue; inscription only on sides of frame. Centre, lake; oval, frame, mantle, and corners, blue; remainder of stamp, red, 10 kopees.

ENVELOPES.

ISSUE OF 1858.—Arms of Russia hand-stamped in red, 2 varieties; 1½ k. For visiting-cards in Warsaw only.

ISSUE OF 1860.—Circular: Russian arms; value inscribed in white letters at bottom, and in Russian, black, at top. Black, 10 k.

Circular: arms as above; inscribed "Poczta Miejska Warszawska." Blue, 3 k. For Warsaw only. All Polish stamps were superseded for Russian from March, 1866.

PORTUGAL.

Embossed; profile of Queen Maria II. to left, in frame; various shapes. Yellow-brown, brown, 5 reis (octagon). Light blue, dark blue, 25 r. (oblong sinuous). Blue-green, yellow-green, 50 r. (octagon). Lilac, 100 r. (oblong).

ISSUES OF 1858-61.—Embossed; profile of King Pedro V. to right, in frame; various shapes; the hair is parted. Chocolate, pale red-brown, 5 r. (octagon). Blue, 25 r. (oblong sinuous). Green, 50 r. (octagon). Lilac, 100 r. (oblong).

Same device as above. Hair curly and *not* parted. Red-brown, chocolate, 5 r. Rose, blue, 25 r.

ISSUE OF 1862.—Embossed; profile of King Louis to left, in frame; various shapes. Brown, 5 r. (octagon). Rose, 25 r. (oblong). Green, 50 r. (octagon). Lilac, 100 r. (oblong).

ISSUE OF 1863.—Similar to 1862 issue. Yellow, 10 r. (octagon).

ISSUE OF 1866-67.—Profile to left in oval; Black, 5 r. Yellow, 10 r. Light brown, 20 r. Rose, 25 r. Green, 50 r. Orange, 80 r. Lilac, 100 r. Blue, 120 r.

ISSUE OF 1867-68.—The same, perforated. The whole current set is also stamped with name in black, for the use of the Azores.

PRUSSIA (superseded, see p. 20).

ISSUE OF 1850.—Profile of King Frederick William IV. to right, on a ground composed of crossed lines; inscribed "Freimarke." Green, 4 pfennige. Red, 6 pf.

Similar to above; black printing on coloured paper. Lake, 1 silber groschen. Blue, 2 s. gr. Yellow, 3 s. gr.

ISSUE OF 1857.—Similar to 1850 issue, on plain coloured ground. Rose, 1 s. gr. Blue, 2 s. gr. Orange, 3 s. gr.

ISSUE OF 1858.—Similar to 1850 issue, ground not so dark. Green, 4 pf. Scarlet, $\frac{1}{2}$ s. gr. = 6 pf. Pink, 1 s. gr. Blue, 2 s. gr. Orange, 3 s. gr.

ISSUES OF 1861-65.—Octagonal: numbers in corners, outside stamp; crowned eagle in oval; inscribed "Preussen" at top. Lilac, 3 pf. Green, 4 pf. Orange, 6 pf.

Oval: similar to above, with numbers in ovals at sides. Rose, 1 s. gr. Blue, 2 s. gr. Stone, 3 s. gr.

ISSUE OF 1866.—Oblong rectangle; large numerals of value on elaborate back-

ground, composed of microscopic eagles; "Preussen" above; "Silb. Gr." below. Pink, 10 s. gr. Blue, 30 s. gr. For registered letters.

LOCALS FOR BRESLAU.—Rectangular: fancy device; figures of value in central circle; "name" above in large, "Dienstmann's Institut" in minute letters below; black impression on coloured paper. Yellow, $\frac{1}{2}$ s. gr. Pink, 1 s. gr. Green, $1\frac{1}{2}$ s. gr. Blue, 2 s. gr. Orange, $2\frac{1}{2}$ s. gr. Violet, 5 s. gr.

Inscription on shield: "Breslau" above; black on colours. Similar values and colours.

ENVELOPES.

ISSUE OF 1850.—Oval: embossed profile of King Frederick William IV. to right; value at top in words, and figure in oval at bottom; two threads running through the stamp. Pink, 1 s. gr. Blue, 2 s. gr. Orange, yellow, 3 s. gr.

Octagon: similar to above; but figure at top; value in words at bottom. Brown, 4 s. gr. Lilac, 5 s. gr. Green, 6 s. gr. Red, 7 s. gr.

ISSUE OF 1857.—Oval: similar to 1850 issue, without threads; inscription in small letters, printed to left of stamp. Pink, 1 s. gr. Blue, 2 s. gr. Orange, yellow, 3 s. gr.

ISSUE OF 1861.—Oval: embossed crowned eagle in oval; inscribed "Preussen" at top; inscription to the right of the stamp. Pink, 1 s. gr. Blue, 2 s. gr. Stone, 3 s. gr.

ISSUE OF 1863.—Similar; but inscription crosses the stamp.

ISSUE OF 1866.—Feldpost. Printed directions. For military service.

ISSUE OF 1867.—Octagon: eagle, &c., as above. Green, 4 pf. Orange, 6 pf.

ROMAGNA.

ISSUE OF 1859.—Figure denoting value in centre; inscribed "Franco Bollo Postale Romagne," printed with type, in black ink, on coloured paper. Pale yellow, $\frac{1}{2}$ bajocco. Drab, 1 b. Yellow, 2 b. Green, 3 b. Orange-brown, 4 b. Violet, 5 b. Green, 6 b. Pink, 8 b. Pale blue, 20 b.

Discontinued in 1860.

RUSSIA.

ISSUES OF 1857-59.—Embossed double-headed eagle, crowned, over two post-horns, in oval, coloured differently to the remainder of stamp; surrounded by mantle;

surmounted by crown; figures denoting value in corners. Brown, blue centre, 10 kopecs. Dark blue, orange centre, 20 k. Lake, green centre, 30 k.

ISSUE OF 1863.—Similar device to 1858 issue, on square shield, in circle; inscribed "Mapka" at top. Blue, 5 k.

ISSUE OF 1864.—Double-headed eagle, crowned, over two post-horns, in oval; inscribed with Russian characters and value in figures; figures of value in white circle in each corner; the groundwork is tinted by an immense number of small figures of value. Black and yellow, 1 k. Black and green, 3 k. Black and lilac, 5 k.

ENVELOPES.

ISSUE OF 1848.—Circular: embossed; double-headed eagle, crowned, on engine-turned ground, in inscribed circular frame, on the flap of the envelope; inscription at top, printed in colour; at bottom, embossed in white. Black, 10 and 1 k. Blue, 20 and 1 k. Pink (now red), 30 and 1 k. Light and dark blue, 5 and 1 k. (on white, not embossed): for St. Petersburg. The extra 1 k. pays for the envelope.

SARDINIA (see first four issues for Italy).

SAXONY (superseded, see p. 20).

ISSUE OF 1850.—Square: figure denoting value in centre; inscribed "Sachsen" at top; ornamental corners. Red, 3 pfennige.

ISSUE OF 1851.—Profile of King Frederick Augustus to right, in oval frame; black printing on coloured paper. Grey, $\frac{1}{2}$ neu groschen. Pink, 1 n. g. Blue-green, 2 n. g. Dark blue, 2 n. g. Dirty white, yellow, 3 n. g.

ISSUE OF 1854.—Arms and crown in oval; figures at sides denoting value. Green, 3 pf.

Profile of King John to left, in oval frame; figures at sides denoting value; black printing on coloured paper. Grey, $\frac{1}{2}$ n. g. Pink, 1 n. g. Dark blue, 2 n. g. Yellow, 3 n. g.

ISSUE OF 1856.—Similar to 1854 issue; printed in colour. Brown, red, 5 n. g. Blue, 10 n. g.

ISSUE OF 1863.—Arms surmounted by crown; figures denoting value in ovals at sides and bottom of shield, and in corners. Green, 3 pf. Scarlet, $\frac{1}{2}$ n. g.

Oval: similar to above; with minute figures indicating value above and under ovals at sides containing same figures. Rose, 1 n. g. Blue, 2 n. g. Brown, 3 n. g. Lilac, 5 n. g.

ISSUE OF 1865.—Locals for Dresden. Arms; colour on white. Green, 3 pf. Yellow, $\frac{1}{2}$ n. g. Pink, 1 n. g.

ISSUE OF 1866.—Do. Circular; arms in irregular band. Yellow, $\frac{1}{2}$ n. g. Pink, 1 n. g. Lilac, 2 n. g. Rose, $2\frac{1}{2}$ n. g. Salmon, 3 n. g. Green, 5 n. g.

ENVELOPES.

ISSUE OF 1856.—Oval: embossed profile of King John to left; inscription in small letters to left of stamp; inscribed "Sachsen." Rose, 1 n. g. Blue, 2 n. g. Yellow, 3 n. g. Lilac, 5 n. g. Green, 10 n. g.

ISSUE OF 1862.—Oval: embossed; similar to 1856 issue; inscription to right of stamp. Rose, 1 n. g. Blue, 2 n. g. Yellow, 3 n. g. Lilac, 5 n. g.

ISSUE OF 1863.—Oval: embossed; similar to 1863 adhesive issue; inscription to left of stamp. Rose, 1 n. g. Blue, 2 n. g. Brown, 3 n. g. Lilac, 5 n. g.

ISSUE OF 1865.—Octagonal: arms embossed. Scarlet, $\frac{1}{2}$ n. g.

Locals: as above. Yellow, $\frac{1}{2}$ n. g. Pink, 1 n. g.

Orpheonic Society: plain, with inscription; ditto, reverse elaborately ornamented.

1866. FELD-POST.—Arms and inscriptions on green paper. For military service.

SCHLESWIG AND HOLSTEIN (superseded, see p. 20).

ISSUED IN 1848.—By Provisional Government. Embossed arms in disc, on double-headed eagle on lined ground; "S. H." in top, and figures denoting value in bottom corners. Blue, 1 schilling. Rose, 2 sch.

ISSUE OF 1864.—Square: value in centre on white, surrounded by circular wreath. "H. R. Z. G. L. Post F. R. M." at sides and top, and value at bottom; post-horn in corners. Blue (2 varieties), 4 S. R. M. ("1 $\frac{1}{2}$ Schilling, Crt.") in centre.

Oval: large white figure in centre, on plain coloured ground. "Herzogth. Schleswig" at top. Rose, 4 sch. Green, 1 $\frac{1}{2}$ sch.

Square: value ("1 $\frac{1}{2}$ Schilling, Crt.") in centre on red network ground; sides and top inscribed same as first 1864; post-horn in corners; value at bottom. Blue, 1 $\frac{1}{2}$ S. L. M.

ISSUES OF 1865.—Oval: large white figure, embossed on coloured ground.

“Schleswig-Holstein” above, value below. Deep pink, $\frac{1}{2}$ sch. Green, $1\frac{1}{2}$ sch. Lilac, $1\frac{1}{2}$ sch. = 1 sgr. (star below in lieu of value). Blue, 2 sch. Light brown, 4 sch.

NOVEMBER 1, 1865.—Similar stamps for Duchy of Schleswig. Green, $\frac{1}{2}$ sch. Mauve, $1\frac{1}{2}$ sch. Pink, $1\frac{1}{2}$ sch. Blue, 2 sch. Light brown, 4 sch. Inscription, “Herzogth. Schleswig” above, value (except in the rose) below.

NOVEMBER 1, 1865.—For Duchy of Holstein. Figures not in relief. “Herzogth. Holstein” above, value below. Green, $\frac{1}{2}$ sch. Pale mauve (white letters), $1\frac{1}{2}$ sch. Blue, 2 sch. “Herzogthum” above, asterisk below. Carmine, $1\frac{1}{2}$ sch. = 1 sgr., in central oval. Light brown, 4 sch. = 3 sgr. 1866.—Mauve (dark letters), $1\frac{1}{2}$ sch. Blue, 2 sch. All these stamps are, or shortly will be, superseded for Danish and Prussian.

SERVIA.

ISSUE OF 1866.—Rectangular: profile of Prince-regnant to left, in circle; inscription in Servian characters above; value, beneath: figures of value at each angle. Green, 1 para. Brown, 2 p. Yellow, 10 p. Pink, 20 p. Blue, 40 p.

Smaller rectangle on tinted paper: white cross on draped shield surmounted by crown in circle; inscribed as above. Green on pale pink or brown, 1 para. Red brown on lilac or mauve, 2 p. Several varieties of colour are found.

SICILY (superseded by the ITALIAN).

ISSUE OF 1859.—Profile of King Ferdinand II. to left; inscribed “Bollo della Posta di Sicilia.” Light and dark yellow, $\frac{1}{2}$ g. Yellow-olive, green-olive, 1 g. Blue, light and dark, 2 g. Deep red, vermilion, brownish red, paler red, 5 g. Intense blue, 10 g. Slate-black, 20 g. Deep red-brown, 50 g.

SPAIN.

ISSUE OF 1850.—Profile of Queen, crowned, to left; date below. Black (on white and tinted paper), 6 cuartos.

Profile of Queen to right, date below; coloured letters, white frame. Violet, 12 c. Green, 10 reales.

Similar to last; white letters, coloured frame. Red, 5 r. Blue, 6 r.

ISSUE OF 1851.—Profile of Queen to right, with rows of pearls, in oval frame. Date below, inscribed "Correos Franco." Black, 6 c. Violet, 12 c.

Similar to last; inscribed "Correos Certificado." Red, 2 r. Rose, 5 r. Blue, 6 r. Green, 10 r.

ISSUE OF 1852.—Profile of Queen to left, in circle; date indicated; inscribed "Correos Franco." Rose, 6 c. Violet, 12 c.

Similar to last; inscribed "Correos Certo." Red, 2 r. Green, 5 r. Blue, 6 r.

ISSUE OF 1853.—Profile of Queen, with diadem, to right, in oval; date indicated. Colours nearly similar; values and inscriptions as 1852 issue.

ISSUE OF 1854.—Arms (lion and castle quartered) in shield; white ground; no date; inscribed "Correos Franco." Green, 2 c.

Similar to last; dated. Red, 4 c. Blue, 1 r.

Similar; but coloured ground. Red, 6 c.

Similar; inscribed "Correos Cert^{do}." Scarlet, 2 r. Green, 5 r. Blue, 6 r.

Similar; black on colour; inscribed "Correos 1854" above, value below. Orange, $\frac{1}{2}$ onza. Rose, 1 o. Green, 4 o. Blue, 1 libra.

ISSUE OF 1855.—Profile of Queen, with wreath, to right, in round pearled border; coloured printing on blue paper; wavy water-mark. Green, 2 c. Red (various shades), 4 c. Blue, 1 r. Brown, 2 r.

Arms in plain oval shield, with crown and collar of golden fleece; inscribed "Correo Oficial" above. Orange, $\frac{1}{2}$ o. Rose, 1 o. Green, 4 o. Grey, 1 li. In light and darker shades.

ISSUE OF 1856.—Similar to 1855 issue; crossed water-mark lines. Green, 2 c. Red, 4 c. Blue 1 r. Violet, 2 o.

ISSUE OF 1857.—Similar to last, without water-mark. Green, 2 c. Rose and scarlet, on tinted paper. Pink, 4 c. Orange red, 12 c. Blue, light and dark, 1 r. Brown, lilac, 2 r. Proofs in various colours.

ISSUE OF 1860.—Profile of Queen, with diadem, to left, in circular frame; inscribed "Correos" above. Green, 2 c. Orange, 4 c. Red, 12 c. Blue, 1 r. Brown, 19 c. Lilac, 2 r.

ISSUE OF 1862.—Profile of Queen, with diadem, to left, in oval; lion and castle in corners; inscribed "Correos" at sides, and "España" at top; on coloured or tinted paper. Dark blue, 2 c. Rich brown, 4 c. Dark blue, light blue, 12 c. Brown, 1 r. Pink, 19 c. Green, 2 r.

ISSUE OF 1864.—Profile of Queen, with diadem, to left; "Correos" at top; value and date in same label at bottom. All on tinted paper. Deep blue, 2 c. Red, 4 c. Green, 12 c. Mauve, 19 c. Brown, 1 r. Blue, 2 r.

ISSUE OF 1865.—Diademed profile of Queen to left; "España" above; "Correos" below; lion, castle, and value at corners. Pink, 2 c. Blue, 4 c. Rose and blue, 12 c. Pink and brown, 19 c. Green, 1 r. Lilac, 2 r.

ISSUES OF 1866.—Portrait almost identical with the preceding. "Correos" above; value in straight label below; castle and lion in shields supporting crown in upper corners. Pink, 2 cuartos. Blue, 4 c. Vermilion, 12 c. Chocolate, 19 c. Green, 10 cent. de escº. ($\frac{1}{2}$ of an escudo = 1 real). Lilac, 20 c. de e. (2 reales). This last is now superseded by an impression identical (date and specification of value excepted) with that for 1864. Lilac, 20 cmos. These later issues are perforated.

ISSUES OF 1867.—Crowned profile of Queen to left, in oval frame; spandrels variously ornamented; inscribed "Correos de España" and value. Brown, 2 cuartos. Blue, 4 c. Orange, 12 c. Pink, 19 c. Green, 10 c. de esc. Lilac, 20 c. de esc.

Type very similar. Blue, centre pink, 25 milésimas de escudo. Pale brown, 50 m. de esc.

LOCALS FOR MADRID.

ISSUES OF 1852-53.—Bear hugging tree, in oval, with wreath and crown; inscribed "Correo Interior" above, "Franco" below. Bronze, 1 c., 2 c., 3 c.

STAMPS FOR JOURNALS, &c.

ISSUE OF 1867-68.—Rectangular; numerals in central circle, "Franqueo," "Impresos"; "España" above; value at sides; "Correos" below. Pale and dark brown, 10 m. de esc. Pale and dark green, 5 m. de esc.

SWEDEN.

ISSUE OF 1855.—Arms (three crowns) and crown on diapered ground; figures denoting value in top corners; inscribed "Sverige Frimærke." Green, 3 skillings banco. Pale blue, dark blue, 4 s. b. Pale brown, 6 s. b. Yellow, 8 s. b. Pale rose-pink, red, brown, 24 s. b.

ISSUE OF 1858.—Similar to 1855 issue. Green, light, dark, 5 öre. Lilac, purple, 9 ö. Blue, 12 ö. Deep orange, yellow, 24 ö. Red, brown, 30 ö. Lake, deep pink, 50 ö.

ISSUE OF 1866.—Arms, inscription, and large figure of value. Mauve, 17 ö. Vermilion, 20 ö.

STAMPS FOR STOCKHOLM.

ISSUE OF 1855.—Oblong rectangular: inscribed "Frimärke för Lokalbref" in oval; no value denoted. Black, 1 s.

ISSUE OF 1862.—Similar to 1855 issue. Pale brown, 3 ö.

Lion crouching in front of arms, crowned, in a glory. Brown, 3 ö.

SWITZERLAND.

FEDERAL ADMINISTRATION.

ISSUE OF 1850.—White cross on red shield, in ornamental frame, and post-horn above; inscribed "Rayon I." at top. Blue. Black printing on blue paper, 5 rappen, 5 cents.

Similar to above; "Rayon II." Black printing on yellow, orange, or light brown paper. 10 r. or c.

Similar to first; shield red-lined. "Rayon III." Red, 15 r. or c. (variation, stamp with smaller figures).

Similar to first; "Post locale" at top. Black, 2½ r. or c.

Similar to first; shield red-lined. "Orts post" at top. Black, 2½ r.

ISSUES OF 1854-62.—Figure of Helvetia, with cross on shield; inscribed "Franco" at top, and "Rappen, Centimes, Centesimi." Grey, 2. Brown, 5. Blue, 10. Pink, 15 (sometimes on tinted paper). Yellow, 20. Green, 40. Grey, 1 franc.

Similar to above; embossed figures and words. Colours varying.

ISSUE OF 1862.—Figure of Helvetia, with cross, on shield; inscribed "Helvetia" at top, "Franco" at bottom, and figures in corners denoting value in centimes. Grey, 2. Black, 3. Brown, 5. Blue, 10. Orange, 20. Red, 30. Green, 40. Bronze, 60. Gold, 1 franc.

ISSUE OF 1867.—The same. Pale brown, 5. Deep pink, 10. Blue, 30. Mauve, 50.

ENVELOPES.

ISSUE OF 1867.—Oval: ornamented shield bearing cross, surmounted by dove; eleven stars on each side; value in figures beneath. Light brown, 5. Deep pink, 10.

CANTONS AND TOWNS.

BASLE (TOWN).

Embossed: white dove on red shield; inscribed "Stadt Post Basel;" figures in bottom corners. Black, 2½ rappen.

GENEVA.

Half eagle and key on shield; inscribed at bottom "Port Cantonal." 5 c., light green (without crown over eagle). 5 c., dark green (with crown over eagle).

Oblong: half eagle and key on shield; inscribed on label at top "10 Port Cantonal Cent," divided into two portions, each with device, and inscribed at bottom "Port Local." 5 c. Black printing on dark green and light green paper.

ENVELOPE.

Similar device to first-described stamps; green printing on white paper. 5 c.

LAUSANNE (TOWN).

White cross, on red, circular shield, with post-horn below; inscribed "Poste Locale" above. Black, 4 cents, 5 c.

NEUFCHATEL (TOWN).

White cross on red, oblong shield; scroll on side; inscribed "Poste Locale" at top. Black, 5 centimes.

WINTERTHUR (TOWN).

ISSUE OF 1850.—White cross, on red, circular shield; post-horn below; inscribed "Orts Post," "Poste Locale;" value in corners. Red and black, 2½ rappen.

ZÜRICH (TOWN).

ISSUE OF 1850.—Large figure on checkwork ground, in centre; inscribed "Local Taxe" at bottom; some with horizontal, others perpendicular lines. Black, 4 rappen.

Similar; without lines. Black, 4 r.

ZÜRICH (CANTON).

ISSUE OF 1850.—Similar to Town; but with "Cantonal Taxe;" varieties same as Town. Black, 6 rappen.

ESSAYS OF ZÜRICH.

ISSUE OF 1843.—Figure denoting value in oval frame; date "1. 8. 4. 3." in corners; value in words on left, and "Cantonal," or "Local Taxe," on right side. Black, 4 r. (Town), 6 r. (Canton).

RIGI-KALTBAD.

ISSUE OF 1865.—Alpine rose within irregular oval inscribed band, in fancy frame. Bright red, 15 centimes.

THURN AND TAXIS (now superseded by the Northern Postal Confederation).

NORTH.

ISSUE OF 1850.—Square: figure denoting value in square frame; small figures at angles of frame; post-horn in corners; inscribed "Freimarke Deutsch Oestr. Postverein Thurn und Taxis." Black on colour. Brown, $\frac{1}{2}$ silbergroschen. Light brownish pink, $\frac{1}{2}$ s. gr. Green, $\frac{1}{2}$ s. gr. Blue, light and dark, 1 s. gr. Pink, 2 s. gr. Yellow, 3 s. gr.

ISSUE OF 1860.—Square: similar to above; printed in colour. Pink, $\frac{1}{4}$ s. gr. Green, $\frac{1}{2}$ s. gr. Blue, 1 s. gr. Pink, 2 s. gr. Brown, 3 s. gr. Lilac, 5 s. gr. Red, 10 s. gr.

ISSUE OF 1862.—Square: similar to above. Light green, $\frac{1}{2}$ s. gr. Orange, $\frac{1}{2}$ s. gr. Pink, 1 s. gr. Blue, 2 s. gr. Light brown, 3 s. gr.

ISSUE OF 1864.—Square: similar to 1850 issue. Black, $\frac{1}{4}$ s. gr.

ENVELOPES.

ISSUE OF 1861.—Oval: embossed; figure denoting value; inscribed "Thurn u. Taxis." Inscription in minute type across envelope, printed in lilac. Orange, various shades, $\frac{1}{2}$ s. gr. Pink, 1 s. gr. Blue, 2 s. gr. Pale brown, 3 s. gr.

ISSUE OF 1862.—Oval: embossed; similar to above in colour and enumeration. Inscription printed in same colour as stamp.

1866.—Similar. Black, $\frac{1}{4}$ s. gr.

SOUTH.

ISSUE OF 1850.—Square: figures denoting value in circular frame; post-horn; figures at corners; inscribed same as North 1850 issue. Black printing on coloured paper. Green, 1 kreuzer. Blue, light and dark, 3 k. Pink, 6 k. Deep yellow, 9 k.

ISSUES OF 1860-62.—Square: similar device to 1850 issue; printed in colour. Green, blue, 1 k. Blue, pink, 3 k. Pink, blue, 6 k. Orange, yellow, light brown, 9 k. Lilac, 15 k. Red, 30 k.

ENVELOPES.

ISSUE OF 1861.—Octagonal: embossed; figure denoting value; inscribed "Thurn u. Taxis." Inscription in minute type across envelope, printed in lilac. Deep (now pale) Yellow, 2 k. Pink, 3 k. Blue, 6 k. Light brown, 9 k.

ISSUE OF 1862.—Octagonal: embossed; similar to above in colour and enumeration. Inscription printed in same colour as stamp.

1866.—Similar. Light and dark green, 1 kr.

The kreuzer stamps of Thurn and Taxis were superseded till 1868 by the following, issued by the Prussian Government for its annexed states, Nassau, Hesse Cassel, &c.

ISSUE OF AUGUST, 1867.—Nearly square: embossed; Prussian eagle, "Preussen" above; "kreuzer" below; numerals at sides. Green, 1 kr. Orange, 2 kr. Pink, 3 kr. Blue, 6 kr. Pale brown, 9 kr.

ENVELOPES.

Same types and values; colours generally deeper.

TURKEY.

ISSUE OF 1863.—Signature of the Sultan over a crescent bearing inscription; ornamentation in upper corners; also below, with figures of value in a circle. Black printing on coloured paper. Pale and dark yellow, brownish and brick-red, 20 paras. Dull lilac and violet, brownish red, 1 piastre. Blue, blue green, light brick red, 2 pi. Rose, brick red, 5 pi. The various red shades are for official use.

ISSUE OF 1865.—Star over a crescent, surrounded by a black inscription on white ornamentation; figures (Turkish) denoting value in each corner. Coloured, on white paper.

Green, 10 paras. Yellow, orange, 20 pa. Lilac, pale violet, 1 pi. Blue, 2 pi. Rose-red, 5 pi. Orange, 25 pi. Same stamps, except the first, in brown for official use.

ISSUE OF 1866.—Local for Constantinople. Rectangular: star and crescent in circle; inscribed in Turkish and French "Poste Locale," and value. Black on blue, 5 paras. On green, 20 p. On pink, 40 p. These are now suspended.

ISSUE OF 1866.—For Egyptian letters delivered in Constantinople. Small oblong; inscribed "Service Mixte," &c. Red on white, 1 p. Blue on white, 2 p. Black on yellow, 10 p. Black on pink, 20 p.

DANUBE AND BLACK SEA RAILWAY LOCAL.—Rectangular; railway-train, steamer, &c., surmounted by crescent and star; "Local Post" above, value below. Black on green, 20 paras.

TUSCANY.

ISSUE OF 1854.—Crowned lion with shield; inscribed "Franco Bollo Postale Toscano." Printed on blue, tinted, and white papers. Black, 1 quatrino. Yellow, orange, 1 soldo. Lake, 1 crazia (on some, crazie). Shades of blue, 2 cr. Green, 4 cr. Slate, blue, dark blue, 6 cr. Claret, 9 cr. (never on pure white).

Similar to above, on blue paper only. Red, 2 s. Red-brown, 60 cr.

ISSUE OF 1859.—White cross on shield in mantle, surmounted by crown; inscribed same as former issues. Violet, 1 cent. Green, 5 c. Brown, 10 c. Dark blue, slate-blue, 20 c. Lake, 40 c. Brownish pink, 80 c. Yellow, 3 lire. (Issued by the Provisional Government.)

WÜRTEMBERG.

ISSUE OF 1850.—Square: figure denoting value on ground composed of small circles in diamond frame; date of issue inscribed on right side. Black printing on coloured paper. White, slightly tinted with brown, 1 kreuzer. Yellow, 3 k. Green, 6 k. Pink, 9 k. Violet, 18 k.

ISSUE OF 1860.—Square: embossed; royal arms, supported by stag and lion, on wavy ground; inscribed at top "Freimarke," and at sides and bottom with value. Yellow brown, dark brown, 1 k. Orange, 3 k. Light and dark green, 6 k. Pink, 9 k. Blue, 18 k.

ISSUE OF 1863-64.—Similar to above. Pea and grass green, 1 k. Pink, 3 k. Blue, 6 k. Two shades of brown, 9 k. Orange, 18 k.

ENVELOPES.

ISSUE OF 1862.—Octagonal impression: large white figure denoting value in oval, embossed; inscription to right in light green. Pink, 3 k. Blue, 6 k. Brown, light and dark, 9 k.

ISSUE OF 1863.—Similar to above; inscription smaller; colours and enumeration the same.

ISSUE OF 1865.—Similar. Pink, 3 k., inscription black. Blue, 6 k., inscription yellow. Green, 1 k., inscription to left in lilac.

ISSUE OF 1866.—For Post-Office Orders.—Similar, on yellow paper. Orange, 4 k. Blue, 6 k. Green, 7 k. Pale brown, 9 k.

STAMP FOR RETURNED LETTERS.

Square: royal arms with laurel wreath in oval; inscribed "Commission für Retourbriefe."

ASIA.

CASHMEER.

ISSUES OF 1866.—Nearly square. Hindostani characters in central semi-ovals. Black, 3 pics. Blue, 6 p. Orange-red, 1 anna. Yellow, 2 a. Green, 4 a. Vermilion-red, 8 a. Round; Black, 6 pics. Blue, 4 annas.

CEYLON.

ISSUE OF 1857-67.—Profile of Queen Victoria to left, in oval disc; "Postage," in small letters, at bottom. Blue, 1d. Emerald and olive green, 2d. Brown, now olive green, 5d. Various shades of brown, 6d. Red, 10d. Lilac, 1s., with figures in top corners.

Octagon: similar to above. Rose, dark and light, 4d. Brown, various shades, 8d. Brown, various shades, 9d. Green, 1s. 9d. Blue, 2s.

ISSUE OF 1867.—Rectangular: crowned profile of Queen to left, in circle; name above, value below. Pink, 3d. Type as before; yellow-brown, 2d.

ENVELOPES.

Various shapes: embossed; similar device to above. Blue, 1d. (oval). Green, 2d. (oval). Rose, 4d. (oval). Brown, 5d. (oval). Brown, 6d. (round). Brown, 8d. (octagon). Brown, 9d. (rectangular). Yellow, 1s. (round). Green, 1s. 9d. (rectangular). Blue, 2s. (octagon).

NEWSPAPER STAMP.

Profile of Queen Victoria to left, in circle; glazed paper. Lilac, now violet, $\frac{1}{2}$ d.

EAST INDIES.

ISSUE OF 1854.—Profile of Queen Victoria to left, on block-printed ground. Red, various shades of blue, $\frac{1}{2}$ anna. Red, 1 a. Green, 2 a.

Octagonal: profile of Queen Victoria, printed in blue on white ground, remainder of stamp red; printed on blue, white, and yellow paper. 4 a.

Octagonal: profile of Queen to left, printed in red on white ground; remainder of stamp blue. 8 a.

ISSUE OF 1860.—Rectangular: profile of Queen to left, in oval; printed on blue paper. Blue, $\frac{1}{2}$ a. Brown, 1 a. Orange, pink, 2 a. Black, dark grey, 4 a. Dark pink, 8 a.

ISSUE OF 1862-65.—Similar to above; all except 2 a., which is buff; printed on white paper. Green, 4 a.

ISSUES OF 1866.—Receipt stamp used provisionally. Queen to left. "Postage" printed in green. Lilac, 6 annas. Irregular octagon: portrait of Queen to left in circle. "East India Postage" above, value beneath. Green on white paper, 4 annas.

ISSUES OF 1867.—Provisional, as above. Profile in larger circle. "Service" above, value below, in black letters. Lilac, 2 a. Some of the current set are also found with "Service."

Rectangular: Queen to left, in octagonal frame, inscribed "East India Postage" and value in letters. Lavender, 6 annas and 8 pies.

ENVELOPES.

ISSUE OF 1853-54.—Circular: embossed; device within garter, inscribed "Scinde District Dawk." Black, $\frac{1}{2}$ anna.

ISSUE OF 1861.—Circular: embossed. Queen to left. Blue, $\frac{1}{2}$ a. Brown, 1 a.

NEWSPAPER STAMP.

ISSUE OF 1860.—Profile of Queen Victoria to left, in oval, in octagon frame. Lilac, 8 pies.

ISSUE OF 1865.—Blue, $\frac{1}{2}$ envelope stamp, as above, printed on wrapper.

HONG-KONG (also JEDDO and NAGASAKI, Ports of Japan).

ISSUE OF 1862.—Profile of Queen Victoria on tinted ground, to left; Chinese characters at sides, and value at bottom. Light brown, 2 cents. Light yellow, 8 c. Light blue, 12 c. Lilac, 18 c. Light green, 24 c. Pink, 48 c. Slate, 96 c.

ISSUE OF 1863.—Similar to above. Bluish green, 4 c. Mauve, 6 c. Vermilion, 30 c.

ISSUE OF 1865.—Similar. Deep yellow, 8 c. Scarlet, 30 c. Carmine, 48 c. Yellow-brown, 96 c.

JAVA, &c. (DUTCH COLONIES).

ISSUE OF 1861.—Locality unascertained; crown in wreath; at top, bottom, and sides, a leaf; date at corners; inscription "POST ZEGEL." Black impression on coloured paper. Grey, lavender, rose, 10 c.

ISSUE OF 1863.—East and West Indies. Portrait of King of Holland to left; "Nederl Indie" at sides. Deep red, 10 cents.

PERSIA.

Proposed in 1866.—Rectangular: armorial insignia (lion couchant and rising sun) in central circle; value at angles in Persian characters. Bright blue impression.

SHANGHAI, or SHANGHAE.

ISSUE OF 1865.—Nearly square; large-sized; Chinese dragon and uncouth ornamentation in central square; "Shanghai L.P.O." (local post office) above; value beneath; Chinese characters on either side. Printed colour on white. Blue, 1 candareen. Black, 2 candareens. Chocolate, 3 c. Yellow, 4 c. Chocolate, 6 c. Green, 8 c. Chocolate, 12 c. Red, 16 c.

ISSUES OF 1866.—Rectangular: inscriptions nearly as the preceding: dragon within framework of diverse design in each stamp; coloured impression on white. Pink, 2 cents (oval frame). Lilac, 4 c. (irregular oval). Blue, 8c. (fancy rectangle). Green, 16 c. (fancy rectangle). Very similar. Brown, 1 candareen. Orange, 3 c. Grey, 6 c. Dull green, 12 c.

STRAITS SETTLEMENTS.

ISSUE OF 1867.—Provisionals: Indian adhesives: stamped with a crown and decimal values in colour. Red, $1\frac{1}{2}$ cents on $\frac{1}{2}$ anna. Red, 2 c. on 1 an. Blue, 3 c. on 1 an. Black, 4 c. on 1 an. Violet, 6 c. on 2 an. Green, 8c. on 2 an. Red, 12 c. on 4 an. Blue, 24 c. on 8 an. Black, 32 c. on 2 an.

ISSUE OF 1868.—Rectangular: crowned profile of Queen Victoria to left, within

oval frame, inscribed "Straits Settlements Postage"; value below; colour on white.
 2 cents. 3 c. 4 c. Lilac, 6 c. Orange, 8c. Blue, 12c.
 Green, 24 c.

Same profile within rectangular frame: inscribed as before: and with value.
 Vermilion, 32 c. Brownish Grey, 96 c.

A F R I C A .

CAPE OF GOOD HOPE.

ISSUES OF 1859-63.—Triangular: figure of Hope, reclining on anchor and rock.
 Rosy red, dark red, 1d. Blue, 4d. Pale and dark lilac, 6d. Green, 1s.

Similar to above; printed on blue paper. Crimson, 1d. Very dark violet-blue, 4d.

ISSUE OF 1861.—Similar to above; printed from wood-blocks. Red, deep pink,
 blue, 1d. Blue light and dark, deep pink, 4d. The colony at one time ran short
 of stamps, and these blocks were engraved for temporary use.

ISSUES OF 1864-65.—Rectangular: figure of Hope, with vine and Cape sheep;
 upper label bearing name; lower one, "postage" and value. Red, 1d. Blue, 4d.
 Lilac, 6d. Light green, 1s.

EGYPT.

ISSUE OF 1866.—Rectangular: inscription in Turkish; black on fancy back-
 grounds; designs diverse for each stamp; colour on white. Greenish slate, 5 para.
 Brown, 10 p. Azure, 20 p. Lilac, 1 piastre. Yellow ochre, 2 p. Pink, 5 piastres.
 Grey, 10 p. The central word signifies "Egypt" and should be placed, *curve* uppermost.

ISSUE OF 1867.—Oblong: pyramid and sphinx in oval; value at angles; colour
 on white. Yellow, orange, 5 paras. Lilac, 10 p. Green, 20 p. Red, 1 piastre.
 Blue, 2 p. Light brown, 5 p.

LIBERIA.

ISSUE OF 1860.—Personification of Liberty seated, ship to right, in circular frame;
 large rectangle. Red, 6 cents. Light and dark blue, lilac, 12 c. Olive-green, green,
 24 c. Varieties with double lined frame.

REUNION.

ISSUES OF 1852.—Rectangular: black impression on tinted paper; “Ile de la Réunion” above; “Timb. Poste” and value below. Floral star in fancy frame, 15 c. Ornamentation forming a square, 30 c.

MAURITIUS.

ISSUES OF 1855-56.—Diademed head of Queen Victoria: inscribed “Postage, post paid, Mauritius.” Red, red on yellow paper, 1d. Blue, 2d.

Similar; shading in crossed vertical lines. Orange, 1d. Blue, 2d.

Similar; shading in vertical lines. Light and dark blue, 2d.

ISSUE OF 1856.—Britannia sitting; value not indicated. Scarlet. Amaranth. Green, Blue.

ISSUE OF 1858.—Profile of Queen Victoria to left; badly engraved; Greek frame. Red, orange, 1d. Blue, slate, 2d.

ISSUE OF 1860.—Britannia sitting, similar to 1856; value indicated. Blue, slate, 6d. Scarlet, 1s.

ISSUES OF 1861-65.—Profile of Queen Victoria to left, in oval. Brown, 1d. Blue, 2d. Scarlet, 3d. Pink, 4d. Green, lilac, violet, 6d. Lilac, 9d. Buff, green, ochre-yellow, 1s. Mauve, 5s.

ISSUE OF 1862.—Britannia sitting, similar to 1856. Lavender, 6d. Green, light, dark, 1s.

ENVELOPES.

Various shapes: embossed; profile of Queen Victoria. Lilac, chocolate, 6d. (round). Chocolate, 9d. (profile in five-sided frame; shape is nine unequal sides). Yellow, 1s. (oval).

NATAL.

ISSUE OF 1857.—Embossed on coloured paper; crown, name, and value; a large-sized stamp. Pink, yellow, blue, 1d. Pink, 3d. Green, 6d. Blue, 9d. Buff, 1s.

ISSUE OF 1860.—Portrait of Queen Victoria in white-lined oval frame; small square frame, with circle in each corner. Red, dark red, 1d. Blue, 3d. Grey, 6d.

ISSUE OF 1864.—Same as last. Carmine, 1d. Violet mauve, 6d.

ISSUE OF 1867.—Same. Red, 1d. Slate mauve, 6d. New type. Green, 1s.

ORANGE FREE STATE.

ISSUE OF 1868.—Orange tree and three posthorns in rectangular frame, inscribed: "Oranje Vrij Staat," and value. Orange, 1d.; pink, 6p.; yellow, 1s.

ST. HELENA.

ISSUE OF 1859.—Profile of Queen Victoria to left, in circular frame; "Postage" in small letters underneath. Blue, 6d.

ISSUES OF 1863-68.—Same die; values in black. Red, two shades, 1d. Yellow, 2d. Violet, 3d. Rose-red, carmine, 4d. Green, 1s. Orange, 5s.

SIERRA LEONE.

ISSUE OF 1861.—Profile of Queen Victoria to left, in octagonal frame, with cut corners. Lilac, 6d.

AMERICA, NORTH.

BRITISH COLUMBIA AND VANCOUVER'S ISLAND.

ISSUE OF 1862.—Profile of Queen Victoria to left; value on right side, "Postage" on left. Salmon, pale pink, 2½d.

ISSUE OF 1865.—Crown, "V.," and floral emblems in oval frame, containing name and value. Blue, 3d. (for British Columbia). Queen's head to left; name above; value below. Red, 5 cents. Blue, 10 c. (for Vancouver's Island). Coloured impressions on glazed paper.

ISSUE OF 1868.—Provisional? The 3d. printed buff, with 2 cents. in black.

CANADA.

ISSUES OF 1857-60.—Rose, ½d. Profile of Queen Victoria to left.

Oblong. Red, 3d. Beaver by stream.

Blue, black, 6d. Portrait of Prince Albert.

Green, 6d. sterling = 7½d. currency. Portrait of Queen Victoria.

Dark blue, 10d. Portrait of Cartier.

Black, 12d. Portrait of Queen Victoria.

Rose, 1 cent. Similar device to $\frac{1}{2}$ d.

Red, 5 c. Similar device to 3d.

Purple, purplish brown, brown, slate, 10 c. Similar device to 6d.

Light green, blue-green, $12\frac{1}{2}$ c. Similar device to 6d. sterling.

Dark blue, 17 c. Similar device to 10d.

On all of the above there are figures in corners denoting value.

ISSUE OF 1864.—Profile of Queen Victoria to left, in oval; figure in oval at each corner; "Canada Postage" at top; value at bottom. Crimson-pink, 2 c.

ENVELOPES.

Oval: embossed; similar device to $\frac{1}{2}$ d. adhesive, on white and yellow papers.

Red, 5 c. Brown, 10 c.

CONFEDERATE STATES.

ISSUE OF 1861.—Orange-red, 1 cent. Profile of Calhoun to right, in circular frame. Green, 2 c. Profile to left, in oval frame.

Rose, green, blue, black, 5 c. Portrait of Jefferson Davis in oval frame.

Blue, 5 c. Portrait of Jefferson Davis in circular frame.

ISSUE OF 1862.—Red, blue, 10 c., in figures. Portrait of Beauregard in oval frame.

Blue, 10 c. (value in words); inscribed "The Confederate States of America."

Portrait of Jefferson Davis to right, in oval.

Blue, light and dark, 10 c. (value in figures). Device, &c., same as last.

ISSUE OF 1863.—Red, rose. Portrait of Andrew Jackson in oval frame; figures in top, and "C. S." in bottom corners.

Green, 20 c. Portrait of Washington to left, in oval frame; "The Confederate States of America" round the oval; value at top in figures, and on label at bottom in large letters.

NEW BRUNSWICK.

ISSUE OF 1857.—Lozenge: crown in centre, surrounded by four stars, with figure denoting value, and flowers; figures at corners. Red, 3d. Yellow, 6d. Brown, 1s.

ISSUE OF 1862.—Oblong: transverse; locomotive engine in oval frame. Brown (now lilac), 1 c. Similar shape; steam-vessel. Blue, 12½ c.

Portrait of Prince of Wales, Highland costume, in oval frame. Black, 17 c.

ISSUE OF 1863.—Portrait of Queen Victoria, crowned, in oval frame; figures in corners. Orange, 2 c. Green, two shades, 5 c. Red, 10 c.

ESSAY.

Portrait of Mr. Connell (postmaster at time of issue), in oval frame; figures in corners. Brown, 5 c.

NEWFOUNDLAND (ST. JOHN'S).

ISSUE OF 1858.—Triangular: rose, shamrock, and thistle; figures at corners. Green, 3d. Square: crown, surrounded by four stars, with flowers; figures at corners. Brown, 1d. Ditto, 5d. 1863, chocolate, 5d.

ISSUE OF 1859.—Rose, shamrock, and thistle, in circle, in centre; framework, &c., is different in each stamp. Orange-red and scarlet inks, 2d., 4d., 6d., 6½d., 8d. (only in orange-red), and 1s.

ISSUE OF 1866.—Oblong; name and value inscribed. Codfish swimming; Green, 2 cents: Beaver in Arctic landscape; Brown, 5 c. Vessel sailing; Orange, 13 c. Rectangular; profile of Queen to left, within oval inscribed band; Pale red, 12 c. Portrait of Prince of Wales; Black, 10 c. Portrait of Queen in octagonal frame; Blue, 24 c.

NOVA SCOTIA.

ISSUE OF 1857.—Square: portrait of Queen Victoria; half a star on each side; figures at corners, and inscribed "One Penny Postage" at sides; blue paper. Brown, 1d.

Lozenge-shaped: crown, surrounded by four stars, with flowers; figures at corners. Blue, 3d. Green, 6d. Violet, 1s.

ISSUES OF 1861-63.—Profile of Queen Victoria to left, in circle. Black, 1 c. Lilac, 2 c. Blue, 5 c.

Portrait of Queen Victoria in oval. Green, 8½ c. Bright red, 10 c. Black, 12½ c.

PRINCE EDWARD'S ISLAND.

ISSUE OF 1860.—Rectangular: profile of Queen Victoria to left, in various-shaped frames; inscribed "Prince Edward's Island." Shades of orange, 1d. (rounded corners). Pink, 2d. (circle). Blue, 3d. (oval). Green, 6d. (octagon). Lilac, 9d. currency = 6d. sterling (wavy square).

UNITED STATES.

ISSUES OF 1847-48.—Oblong: eagle on branch, in oval frame; inscribed "U. S. P. O. Despatch." Blue, 1 cent. Postilion, "Government City Despatch." Black, red, 1 c.

Portrait of Franklin to left, in oval frame; figures in lower corners, sometimes on blue paper. Brown, 5 c.

Portrait of Washington to right, in oval frame; sometimes on blue paper. Black, 10 c.

ISSUE OF 1857.—Portraits and profiles of various persons; inscribed "U. S. Postage" at top; value at bottom.

Blue, 1 c. (profile of Franklin to right).

Red, 3 c. (profile of Washington to left).

Brown, two shades, 5 c. (portrait of Jefferson to right).

Green, 10 c. (portrait of Washington to left; "X" in top corners).

Black, 12 c. (similar portrait).

Brownish lilac, 24 c. (portrait of Washington to right).

ISSUE OF 1860.—Orange, 30 c. (profile of Franklin to left, with arms in corners).

Blue, 90 c. (portrait of Washington, in uniform).

ISSUE OF 1861.—Portraits and profiles of various persons; inscribed "U. S. Postage" at top; value at bottom; "U. S." in bottom corners; figures in top corners.

Blue, 1 c. (profile of Franklin to right).

Pink, 3 c. (profile of Washington to left).

Brown, 5 c. (portrait of Jefferson to left).

Green, 10 c. (portrait of Washington to left).

Black, 12 c. (similar to 10 c.).

Various shades from brown to violet, 24 c. (portrait of Washington to right).

Orange, 30 c. (profile of Franklin to left).

Bright blue, 90 c. (portrait of Washington in uniform).

ISSUE OF 1863.—Black, 2 c. (portrait of Jackson to right), printed on light grey or white paper.

ISSUE OF 1866.—Rectangular; portrait of Lincoln in oval fancy frame; U.S. postage and value in figures above; value in words and U. S. below. Black impression, 15 c.

For newspapers and periodicals. Issue of 1866.—Large rectangle; profile of Washington to right in central circle; inscriptions denotive of nature and value; coloured impression. Azure, 5 cents. Green (portrait of Franklyn), 10 c. Red (Lincoln), 25 c.

ENVELOPES.

ISSUE OF 1853-55.—Oval: embossed; profile of Washington to left, on white or yellow paper. Red, 3 c. Red, green, 6 c. Green, 10 c.

ISSUES OF 1860-61.—Smaller oval: embossed; profile of Washington to left; inscribed "United States" at top; on white or yellow paper. Vermilion, 3 c., 6 c. Green, 10 c.

Profile of Franklin to right, on yellow paper. Blue, 1 c.

Same, printed side by side with the 3 c., on white or yellow paper, to form 4 c.

Oval: embossed; profile of Washington to left; inscribed "United States;" figures at sides; on white, blue, or yellow paper. Pink, 3 c., 6 c.

Transverse oval: similar to last; value in words over profile, and at sides in circle; on white or yellow paper. Green, 10 c.

Transverse oval: similar to last; printed in two colours on straw coloured paper. Brown and red, 12 c. Blue and red, 20 c. Green and red, 24 c. Black and red, 40 c.

ISSUE OF 1863.—Ornamental hexagon: similar; portrait of Jackson to left; "U.S. Postage" above, value below; on yellow paper. Black, 2 c. The same on buff paper, in 1864. "U.S. Post" above.

ISSUE OF 1865.—Similar to 1861. Oval: bolder figures. On white or buff. Rose, 3 c., 6 c.

Same impressions, on white or buff. Brown, 3 c. Violet, 6 c.

ISSUES OF 1866-67.—Similar to the transverse oval, 10 c., on buff paper. Yellow, 9 c. Red, 18 c. Green, 30 c. Type somewhat varying from corresponding values of previous issue. Brown, 12 c. Blue, 24 c. Pink, 40 c.

SPECIAL OR PRIVATE POSTAGE STAMPS (including those of the CONFEDERATE CITIES, CANADA, and CALIFORNIA). Many of these are unauthenticated.

- Adams and Co., Eagle City Post, Paid.—Circular. Black on white.
- Adams' Eagle City Post Express.—Blue on white, red on white, black on yellow.
- Adams' Express Co., 59, Broadway, New York.—Eagle embossed. (Envelope.) Red on white, blue on white, green on yellow.
- Adams' City Express Post.—Black on brown, 2 c.
- Adams' Express Co., Philadelphia.—Pegasus. Red on yellow.
- American Express Co., Postage Paid.—Green, 2 c.
- American Letter Mail Co.—Eagle on rock. Black ink, 20 for a dollar.
- American Letter Mail Co.—Eagle in circle. Black.
- Arthur's City Express.—Square. Black on white, yellow, red, green.
- Avenue Eighth Post Office.—Square. Red, black, 5 c.
- Avenue Third, S. R. Post Office.—Oblong. Black on white, yellow, red, green.
- Ballou and Co.'s Cariboo Express, Paid.—(Envelope.) Ornamental border.
- Bamber's Express (California).—Oblong: oval. Blue on white.
- Bancroft's City Express, Montreal.—Portrait to right. Blue impression. 5 c.
- Bank and Insurance Notice Delivery Office, 50, William Street.—Blue. Same inscription, 82, Broadway.—Blue.
- Barnard's Cariboo Express, Paid.—Oblong. Black on dark orange.
- Ditto, Collect.—Black on green.
- Barr's Penny Despatch.—Oblong. Black on green. Red on white.
- Baton Rouge.—Name. Pink on green fancy paper. 5 c.
- Bazaar Post Office.—Eagle. Blue, 10 c. Ditto, smaller, rose-red.
- Bedford and Co.'s Express, Astor House, New York.—Large oval: figure of value in centre. Dull violet, 10 c.
- Bell's Dispatch.—Canadian arms: name above; "Montreal" below; value in angles. Mauve, 2 c.
- Bentley's Despatch, Madison Square.—Oblong. Black on white, yellow, red, green.
- Blood and Co., all Letters off except a Bag.—Black.
- Blood's Despatch Paid.—Small eagle. Black ink. White, green.
- Blood's Despatch Stamp for Philadelphia Delivery.—Circular (envelope). Vermilion on yellow or white.

- Blood's One Cent Despatch.—Small oblong. Gold, bronze, on violet-black.
- Blood's Paid Despatch.—Dove: oval. Black ink. Gold, white, green.
- Same device.—Small square. Black on green.
- Blood's Penny Post, Kochersperger & Co., Philadelphia.—Bust: oval. Black on white.
- Same inscription.—Bust: rectangular. Black on white.
- Blood's Penny Post, Philadelphia.—Small oblong. Blue, bronze, on grey, gold on white, bronze on blue or on violet-black, blue on fancy ground.
- Blood's Post Office Despatch.—Small oblong. Bronze on violet-black.
- Blood's 28, South Sixth Street Despatch.—Circular. Red on yellow, red on white.
- Blood's 28, South Sixth Street Despatch, Prepaid.—Circular (envelope). Red, red on yellow.
- Blood's Despatch and Coal Office.—Circular. Red on yellow.
- D. O. Blood and Co., For the Post Office, City Despatch, Paid.—Circular. Black.
- D. O. Blood and Co., City Despatch, Paid.—Man over buildings: square. Black on white.
- D. O. Blood and Co., City Despatch, Post Paid.—Man over buildings: square. Black ink. White.
- Same device, without name of proprietor.—Square. Black ink. White.
- Bouton's Rough and Ready City Dispatch Post.—Profile. Black ink. White, 2 c.
- Boyce's City Express Post.—Oblong. Black on green, 2 c.
- Boyd's City Express Post.—Eagle on globe: oval. Black ink. Lilac, grey, lavender, blue, green, light green, 1 c. Dark green, scarlet, light green, grey, white, dark red, blue, 2 c. Green, 3 c.
- Same device.—Oval. Red, gold, silver, 2 c.
- Same device.—Oval. Gold ink on coloured paper. Red, dark red, scarlet, green, blue, violet-black, 2 c.
- Boyd's City Post, 39, Fulton Street, cor. of Pearl Street.—(Envelope.) Eagle grasping arrows and branch, in oval: large oval; embossed. White on red, buff on blue.
- Brady and Co., Letter Box.—Rectangle. Red on yellow, black on yellow, 1 c.
- Bradway's Despatch, Millville.—Oblong. Gold on bluish paper.
- Brainard and Co., 58, Wall Street, N. Y.—Circular. Blue, black, 20 for a dollar.
- Brattleboro' Vt. Post Office.—Black, 5 c.
- Bridge, C. and W., Despatch.—Oblong. Bronze on yellow, red, green.
- Briggs' Paid Despatch.—Small oblong. Gold on rose.

British Columbia and Victoria Express Company.—Sundry inscriptions below.
Envelopes. White or Yellow.

Broadway Post Office.—Small locomotive : square. Black on yellow, red, green.

Broadway Post Office.—Same : octagon. Black on white, 1 c., 2 c.

Brooklyn City Express Post.—Dove in oval. Black ink on coloured paper. Blue, green, 1 c. Pink, rose, dark red, blue, green, 2 c.

Brown and Co., City Post.—Black on white, 1 c., 2 c.

Brown & McGill's U.S.P.O. Despatch.—Eagle in oval, to left: oblong. Blue, black, 2 c.

Buck's Richmond Express, Paid.—Confederate States only: figures of value in centre; large rectangle. Black, 1 c. Rose, 2 c. Brown, 5 c. Blue, 10 c. Green, 15 c. Red, 20 c. Proofs. Dark brown, black, 5 c. Dark green, black, 15 c. Black, 2 c., 10 c., 2.

M. C. Callaway, Paid.—Blue, 2 c.

California Penny Postage, Paid 5.—Oblong. Blue.

California Penny Post Co., Paid 2.—Octagon. Blue.

Carnes and Co., San Francisco.—Oblong: bear and star. Black, blue, red, bronze, silver, gold, 5 cents.

Smaller: no star, or designation of value. Rose-red.

Larger oblong: City Package Express. Rose-red, 15 c., 20 c.

Carrier's Dispatch.—Oblong. Blue, pink, brown, 1 c.

Carrier's Stamp.—Bust of Franklin: oval. Red-brown.

G. Carter's Paid Despatch.—Small oblong. Black on white.

Central Fair Postage.—Eagle and flags: large rectangle. Blue, 10 c. Green, 20 c. Black, 30 c.

Central Post Office.—Circular. Black ink. Yellow, buff, 1 c.

Charleston, Name, Postage Paid.—Figure in oval. Blue, 5 c.

Cheever and Towle, 7, State Street, City Letter Delivery.—Circular. Blue, grey, scarlet, 2 c.

Chesnut St. Line, Drop letter.—Bust. Rose, 1 c.

Chicago Penny Post.—Beehive. Orange.

City Dispatch Delivery.—Figure of Justice: oval. Black, 1 c.

City Despatch Post.—Portrait. Green, brown, black, yellow, 2 c.

City Express Post.—Figure of value. Blue, black, 1 c. Black, blue, 2 c.

City Letter Express Mail.—Heart-shaped coat of arms. Red, black, 1 c. Red, 2 c.

- Clark and Co.—Letter Box. Red, blue, 1 c.
- Clinton's Penny Post, Philadelphia.—Oblong. Black, white letters.
- College Stamp, E. S. & Co., Rev. and P. O.—Pens and ink. Red, lilac.
- Compagnie Franco-Americaine (issued by Gruthier Frères).—Ship: oblong. Red, black.
- Cornwell Post Office, Madison Square.—Rectangle: portrait. Red, 1 c.
- Cressman and Co.'s Penny Post, Philad'a.—Oblong. Gold on rose, gold on violet-black.
- Cumming's City Post.—Square. Sealed envelope. Black on white, green, 2 c.
- De Ming's Penny Post, Frankford.—Small oblong. Black on brown, black on white.
- Dupuy and Schenck Penny Post.—Beehive: oblong. Black on drab.
- Eagle City Post from Adams' Express.—Oblong. Black on lemon.
- Eagle, &c., Paid, 80, Chesnut Street.—Black on white.
- East River Post Office.—Steamship: oblong. Black on green, 2 c.
- Essex Letter Express.—Square. Ship in oval. Black on red, 2 c. ("S.X." sometimes added.)
- Florida Express.—Rectangular: postilion. Pink, buff.
- Floyd's Penny Post.—Bust in circle. Blue, brown, black, green, rose, red, grey.
- Franklin City Free Despatch Post.—Octagon. Green.
- General Post Office.—Round. Black on brown, 1 c.
- Glenhaven Daily Mail.—Oblong. Black on green, 1 c.
- Gordon's City Express—Postman: circular. Black ink. Green, white, scarlet, 2 c. Gold on same colours.
- Gordon McKay, Boston.—Oblong. Blue, 1 c.
- Graffin's Baltimore Despatch.—Monument. Black on white, red, 1 c.
- Greenhood and Newbauer's Northern Express.—On U. S. envelopes.
- Hackett's City Post.—Oblong. Coloured impression. 2 c.
- Hale and Co., Boston.—Octagon. Blue, red, 20 for a dollar.
- Hale and Co., 13, Court Street, Boston.—Octagon. Blue, red, 20 for a dollar.
- Hanford's Pony Express.—Courier: oval. Black on yellow, 2 c.
- Hanley's Express Post Letter Stamp.—Green, black, 1 c.
- Harnden's Express.—Man with mail-bags: circular. Black on white.
- Honour's City Post.—Blue or black on white, black on yellow, black on lavender, 2 c.
- Honour's Penny Post, Paid.—Black.

- Hourly Express Post Letter Stamp.—Lozenge. Black on green, 1 c.
- Humboldt Express.—Coach and horses between inscription and value. Large rectangle. Pale brown, 25 c.
- Hunt's Despatch.—Square. Black on white, yellow, red, green.
- Hussey's Bank and Insurance Letter City Post, 50, William Street.—Name and strong box. Black, rose, black on yellow.
- Same inscription, Basement.—Larger. Red, black, black on yellow.
- Same inscription, 82, Broadway.—Red, black.
- Hussey's Bank and Insurance Notice Delivery Office.—Blue, pink, 1 c.
- Hussey's Bank and Insurance Special Message Post.—Blue, yellow, mauve (1863), 1 c. Light brown (1863), 2 c. Green, yellow, rose, red, brown, lilac, blue, 1 c.
- Hussey's One Stamp or Cent each Delivery.—Red, 1 c.
- Hussey's S. M. Post, 50, William Street, N. Y.—Mercury on horse: oblong. Black on orange.
- Ditto ditto ditto Gold ink. Green, 10 c. Black, 15 c. Blue, 5 c.
- Hussey's Special Message Post, 50, William Street.—Free. Black on buff.
- Hussey's Post.—Clock without hands. Various inscriptions and colours.
- International Express.—Oblong. Black on vermilion, 2 c.
- International Letter Express.—Oblong. Black on fawn, 2 c.
- Jenkins' Camden Dispatch.—Head: rectangle. Black ink. Drab, white, yellow.
- Johnson's Box to the Post Office every two hours.—Shield-shaped. Black on white.
- Jones's City Express Post.—Bust. Pink, 2 c.
- Johnson's Free P. O. Box.—Large rectangle: inscription, and head of Lincoln. Black on vermilion.
- Ker's City Post.—Portrait. Blue, black, 2 c., 5 c. Lion and unicorn. Blue, orange, red, green, 1d. (For Canada).
- Do., do.—Plume of ostrich feathers. Green, red, yellow, orange, 3d. (For Canada.)
- Kidder's City Express Post.—Courier. Octagon. Bluish green, 2 c.
- Kochersperger & Co.—Profile to right. Red on yellow. Envelopes, black on white.
- Langton and Co.—Rectangle: vessel in circle, inscription around. Five values in twelve colours. Doubtful.
- Langton's Pioneer Express.—Twisted border; with name in large letters: oval. Black, red.
- Letter Despatch, J. H. Prince.—Oblong oval: steamboat. Black on white.

Letter Express, Free.—Man and flag: oval. Brown, 10 for a dollar. Woman and ship: black, 20 for a dollar.

Macon, G. A.—Small square: Post Office; black impression. Light green, 5 c.

McRobish and Co., Acapulco, St. Francisco.—Line ship. Blue, green, pink, 1 real.

McIntire's City Express Post.—Mercury scattering letters. Carmine, 2 c.

Memphis, Paid.—Figure in oval. Vermilion on fancy paper, 5 c.

Messenkope's Union Square Post Office.—Black on green, 1 c.

Metropolitan Errand and Carrier Express Co.—Red and red-brown ink: shield-shaped. 1 c., 5 c., 10 c., 20 c.

Same device.—Blue ink. 1 c., 5 c., 10 c., 20 c.

Same device in relief.—(Envelope.) Red, 2 c.

Metropolitan Express to Mail.—Wm. H. Laws, P. M., embossed in white relief: shield-shaped. Vermilion, blue, 1 c.

Metropolitan American Bible House.—Letters embossed: octagon. Blue, brown, red.

G. A. Mills' Free Despatch Post.—Black on green.

Mobile Post Office, Paid.—Figure in star, and emblems. Blue, 5 c. Black, 2 c.

Moody's Id. Dispatch, Chicago.—Oblong. Black on scarlet.

Money Package American Express (from Wisconsin).—Large letters. Red, black.

Nashville, Tenn., W. D. McNish, P. M.—Figure of value and eleven stars in oval. Drab, amaranth, on grey.

Newburgh American Express Company.—Flag. Blue on red.

New Jersey Express Company.—(Envelope.) Horse's head in relief: oval. Blue-black on yellow.

New Orleans Post Office, J. L. Riddel.—Figure in oval. Scarlet, blue, 2 c. Brown, brown on blue, 5 c.

New York Post Office.—Bust of Washington: large rectangular. Black on blue, black on white, 5 c.

New York City Express.—Eagle on globe: oval. Green, 2 c.

One Cent Despatch.—Cavalier. Red, blue.

Same device.—Inscription, "Washington." Red, blue, grey.

Overton & Co. Letter Express.—Circular: carrier pigeon over mountains. Black on greenish paper.

Pacific Stage & Express Co.—Coach & horses on U.S. envelope. Do., extinct variety.

Pacific Mail Express.—Oblong. Port to port via Mexican Mail. Green, pink, white, yellow, 2 reals.

Paid Eagle Post, at Adams' Express.—Small oblong. Red, blue.

Penny Post, Paid.—Circular. Red.

Petersburg, Virginia.—Upright rectangle; Post Office, 5 W. E. Bass, P. M. Red on white.

Pomeroy's Letter Express.—Female bust. Red, blue, black, black on yellow.

Pomeroy and Co.'s Express.—Locomotive: large square. Black.

Post Office Despatch.—Oblong. Red, blue, bronze, 1 c.

Price's City Despatch.—Black on rose, yellow, blue, 2 c.

Price's City Express Post.—Bust: large oval. Black ink. Green, red, 2 c.

Price's City Express Post.—Bust: small oval. Black ink. Green, amaranth, vermilion, 2 c.

Price's Eighth Avenue Post Office.—Bust: octagon. Red.

Priest's Paid Despatch.—Oblong: black ink. Rose, blue, buff, white.

Prov. R. I. Post Office.—Oblong: black ink. 5 c., 10 c.

Richmond Postage.—Flag. Green, 5 c.

Richmond City Post.—Two cannons. Black.

Robinson and Co.'s Dispatch.—Brown on blue, red on green, 1 c.

Robinson and Co. San Francisco Express, Paid.—Oblong. Black on yellow, grey.

Robison and Co.—Oblong. Envelope. Black ink. Lavender, 1 c.

Roadman's Penny Post.—Oblong. Red.

Russell Post Office, 8th Avenue.—Portrait: octagonal. Black ink. Green, yellow, rose.

Russell's Post Office.—Profile to right. Dark green on green, red on pink.

Sailors' Fair.—Oval: inscription across sailor and flag. Green, 10 c.

Saint Louis Post Office.—Device supported by bears; black ink. 5 c., 10 c.

San Francisco Letter Express.—Oblong: black on pink. City Delivery, G. and H.—Oblong. Blue, 5 c. Ditto, smaller variety.

San Francisco Letter Express Co.—Newsman galloping to N. Y. Green on buff envelope.

Smith's City Express Post, Postage Paid.—Oblong: black ink. Green, 2 c.

Smith's City Express Post, to be Collected on Delivery.—Oblong: black ink. Scarlet, green, 2 c.

- Souter and Co.'s City Letter Despatch.—Black ink. 1 c., 2 c.
- Spence and Brown's Express Paid Post. Courier.—Octagonal. Black.
- Squier and Co.'s City Letter Despatch.—Dove in oval. Puce, maroon, rose, green, 1 c. Green, red, 2 c.
- Same device.—Octagonal. Green, 1 c.
- Stait and Co.'s Eagle City Post.—Large square. Black on yellow.
- W. Stait of the City Despatch.—Oblong: black ink. Yellow.
- Staten Island Paid Express Post.—Oblong. Red, 3 c.
- Steinmeyer's City Post, Paid.—Rose, yellow, green, black, blue, 2 c.
- Stringer and Morton's City Dispatch.—Oblong. Black on brown, 1 c.
- Swarts' City Dispatch Post, Chatham Sq. P. O.—Portrait. Brown, pink, black.
- Swarts', for U. S. Mail, Prepaid.—Square. Blue, yellow on black, 1 c.
- Swarts' Rough and Ready City Dispatch Post.—Portrait to left. Red.
- Teese and Co., Penny Post, Philad'a.—Small oblong. Blue, black, grey, red on white, grey on tint.
- Thompson and Co.'s American Express, Albany.—Black on green.
- Two Cent Stamp.—Portrait in circle. Black.
- Union Despatch.—Square: horse's head. Red, green, 5 c.
- Union Square P. O. City Dispatch.—Shield-shaped. Black on rose, 2 c.
- Union Square P. O. to the Mail, N. Y. City.—Shield-shaped: black ink. Green, pink, 1 c.
- United States City Dispatch Post.—Bust in oval: black ink. Green, blue, 3 c.
- U. S. Postage Prepaid by the Quarter.—Rectangular: red impression. San Francisco.
- U. S. Mail, Prepaid.—Black ink. Pink, buff, yellow, 1 c.
- U. S. P. O. Paid, L. P.—Small oblong. Pink, 1 c.
- U. S. P. O., Paid.—Oblong. Gold on violet-black, blue-black on white, black on white, 1 c.
- Utah Postage.—Octagon: portrait. Rose on white, 5 c. Doubtful.
- Walker's Penny Post.—Oblong: winged arrow. Rose-red.
- Warwick's City Dispatch Post.—Diamond or chain border; black ink. Carmine, yellow, 2 c.
- Same inscription.—Plain border. Brown impression, 2 c.
- Same inscription.—Floral border; green ink. 2 c.

Same device.—Large rectangular. Yellow, 2 c. Red, 6 c.

Washington City Dispatch.—Courier. Lilac, brown, 1 c.

Wells, Fargo, and Co., Half-ounce, Paid from St. Joseph to Placerville, per Pony Express.—(Envelope.) Rose.

Wells, Fargo, and Co.—Name in garter: circular. Blue, $\frac{1}{2}$ oz., 1 dollar.

Wells, Fargo, and Co., One Newspaper over our Californian Route.—Large oblong. Blue.

Wells, Fargo, and Co., Paid over our California and Coast Routes.—Black on buff envelope.

Wells, Fargo, and Co., Paid Express.—Oblong. Black on white.

Wells, Fargo, and Co., Paid Express, to be dropped in New York Post Office.—Large oblong. Black.

Wells, Fargo, and Co., Paid through our California and Atlantic Express.—Red on white envelope.

Wells, Fargo, and Co., Pony Express.—Man on horse. Red, 1 dollar. Green, rose, 2 dol. Green, black, 4 dol.

Wells, Fargo, and Co., Pony Express. If enclosed in our franks.—Man on horse. Brown, $\frac{1}{2}$ oz., 10 c. Blue, $\frac{1}{2}$ oz., 25 c.

Wells, Fargo, and Co., Stage-couch, 4 horses overland, via Los Angeles for U. S. Mail.—Black.

Westervelt's City Post.—Black on drab, light and dark green, light and dark blue, white.

Westervelt's Post, Chester, N. Y.—Oblong. Lavender, flesh.

West Town.—Small oblong. Chocolate.

West Town Stage Dispatch.—Gold, red, orange.

Wheeler's Express, Paid.—On U. S. white and buff envelopes.

Wheeler, Rutherford, and Co., Paid Express.—Ditto.

Whitteley's Express.—Head to right in oval. Red, 2 c.

Winan's City Post.—Oblong: flying bomb; black ink. White, 2 c. Yellow, 5 c. Green, 10 c. Scarlet, 20 c.

Winslow and Co., Express, Portland, Montreal.—Round. Black on yellow.

W. Wyman, 8, Court St., and 3, Wall Street.—Locomotive and cars: oblong. Black, 20 for a dollar.

Zack's Snow-shoe Express, Paid.—Black impression. Doubtful.

CENTRAL AMERICA.

BRITISH HONDURAS.

ISSUE OF 1866.—Crowned profile of Queen Victoria to left, within oval band containing name and value; ornamental spandrils completing a rectangle. Blue, one penny. Pink, sixpence. Green, one shilling.

COSTA RICA.

ISSUE OF 1863.—Two ships and rocks, surmounted by five stars, enclosed in a frame formed with laurels and standards; inscribed "Correos de Costa Rica," "Porte," and value. Blue, green, $\frac{1}{2}$ reale. Bright red, 2 r.

ISSUE OF 1864.—Same as above. Green, 4 r. Orange, 1 peso.

GUATEMALA.

PROPOSED IN 1867.—Large rectangle: view composed of rocks, water, vessel, boats, &c., in circle; name above, "Correos Cinco Cent." below. Brown, two shades. Green. Black, 5 centavos.

HONDURAS (Republic.)

ISSUE OF 1865.—Nearly square: emblematical device in oval; triangle, turrets, arch of union, rising sun, cap of Liberty, rock, and ocean; "Correos de Honduras," "Dios, union, y libertad," and value. Black impression on pink or green paper, 2 reales.

MEXICO.

ISSUE OF 1857.—Portrait of President in oval frame; inscribed "Correos Mejico" at top, and value at bottom; colour on white. Blue, $\frac{1}{2}$ real. Yellow, 1 r. Green, 2 r. Red, 4 r. Violet brown, 8 r.

ISSUE OF 1861.—Similar to above; black printing on coloured paper. Light brown, $\frac{1}{2}$ r. Green, 1 r. Pink, 2 r. Yellow, 4 r. Brown, 8 r.

Similar to above; coloured ink on coloured paper. Red on yellow, 4 r. Green on brown, 8 r.

N.B.—Each issuing State marked the name on the edge of the above stamps.

ISSUE OF 1864.—Crowned eagle, with serpent in beak, standing on prickly pear tree, in oval; inscribed at top "Correos Mexico;" value at bottom. Chocolate, $\frac{1}{2}$ r. Shades of blue, 1 r. Orange, 2 r. Light green, 4 r. Shades of red, 8 r.

ISSUE OF 1865.—Similar impression. Brown, 3 centavos.

ISSUE OF 1866.—Rectangular: head of the Emperor Maximilian to left in oval band, inscribed "Imperio Mexicano;" value twice noted, and "Correos." Brown, lilac, 7 centavos ($\frac{1}{2}$ real). Blue, light and dark, 13 c. (1 r.) Orange, yellow, 25 c. (2 r.) Green, light and dark, 50 c. (4 r.)

ISSUES OF 1867.—Circular: date and value in centre; inscribed "Franco en Guadalajara"; black impression. White, $\frac{1}{2}$ r. Light and dark blue, 1 r. Green, 2 r. Pink, white, 4 r.

First issues revived: on thin bluish paper. Greenish blue $\frac{1}{2}$ r. Blue, 1 r. Green, black on lilac, 2 r. Pink, 4 r. Black on tawny, 8 r.

NICARAGUA.

ISSUE OF 1862.—Transverse oblong: view, sun rising from behind mountains; cap of Liberty on top of third peak; inscribed "Nicaragua" at top, "Correos Porte" at sides, and value at bottom in words; figures in corners. Blue, 2 centavos. Black, 5 c.

SALVADOR.

ISSUE OF 1867.—Oblong rectangle: volcano in central oval; "Correos del Salvador" and value in letters and figures inscribed in fancy framework. Blue, $\frac{1}{2}$ real. Red, 1 r. Green, 2 r. Light brown, 4 r.

SOUTH AMERICA.

ARGENTINE CONFEDERATION.

ISSUE OF 1860.—Rising sun, and cap of Liberty on pole; inscribed "Confed^{on} Argentina," in Greek pattern frame, value below. Red, 5 centavos. Green, 10 c. Blue, 15 c. The two latter are doubtful.

ISSUE OF 1861.—Similar to above; deeper border, figures of value smaller. Red, 5 c. Green, 10 c. Blue, 15 c.

ISSUE OF 1862.—Cap of Liberty on pole, in small oval, rising sun above, wreath below; inscribed "Republica Argentina." Lilac and rose-pink, 5 c. Green, 10 c. Blue, 15 c.

Sun in circle; inscribed "Diligencia," and value. Blue, 60 c. Green, 80 c. Red, 1 real.

ISSUE OF 1864.—Portrait of President Rivadavia in oval frame. Red, pink, deep rose, 5 c. (figures in corners, "Republica Argentina" and value in words within frame). Green, 10 c. (figures in corners, "Republica" and "Diez" above, "Argentina" and "Centavos" below). Blue, 15 c. (figures in oval at sides, "Republica Argentina" and value in words inscribed in frame).

ISSUE OF 1867.—Various portraits: inscriptions as above; colour on white. Rivadavia in circle; vermilion, 5 c. Belgrano in oval; green, 10 c. San Martino in lozenge; blue, 15 c.

BOLIVIA.

ISSUE OF 1867.—Rectangular: eagle within central oval frame; inscribed "Bolivia Correos Contratos Centavos"; numerals at angles; colour on white. Green, 5 centavos. Red, 20 c. Yellow, 50 c. Pale blue, 100 c.

BRAZIL.

ISSUE OF 1843.—Transverse oblong: large size Roman numerals denoting value, with curls in ornamented frame; printed in black on white paper. 30, 60, and 90 reis.

ISSUE OF 1844.—Transverse oblong: Italic figures denoting value, with arched corners; printed in black on white paper. 10, 30, 60, 90, 180, 300, 600 r.

ISSUE OF 1850.—Transverse oblong: Roman numerals denoting value; printed in black on white paper. 10, 20, 30, 60, 90, 180, 300, 600 r.

ISSUE OF 1861.—Transverse oblong: small size Roman numerals in oval disc; horizontal lines at corners. Red, 280 r. Orange, 430 r.

ISSUE OF 1866.—Rectangular: portrait of emperor in oval frame, encompassing devices varying. Red, 10 reis. Dark blue, 50 r. Orange, 500 r. Similar portrait in circular frame; shades of violet, 80 r. Green, 100 r. Profile to left, on engine-turned background of different pattern; shades of brownish lilac, 20 r. Black, 200 r.

NEWSPAPER STAMPS.

ISSUE OF 1854.—Transverse oblong: similar to 1850 issue; printed on white paper. Blue, 10 and 30 r. Lavender, 10 r.

There is no name of the issuing country on any of the above previously to the current series. A set of envelopes is being prepared. Emperor's head embossed in large oval; "Brazil" above; value in letters below, in figures on each side.

ENVELOPES.

ISSUE OF 1867.—Emperor's profile in oval; "Brazil" above; value below in letters, and numerals at sides. Green, 100 reis. Black, 200 r. Vermilion, 300 r.

BRITISH GUIANA.

ISSUE OF 1850.—Inscribed with name and value: black on coloured paper. Oblong oval; yellow, 4 cents. Circular; green, 8 c. Blue, 12 c.

ISSUE OF 1851.—Large rectangle: ship sailing to right in shield; inscribed "Damus patimusque vicissim" at bottom, value at top, "British Guiana" at sides; black printing on coloured paper. Magenta, 1 cent. Ultramarine, 4 c.

Large oblong rectangle: vessel, &c.; inscription rectified; "petimusque," &c. Magenta, ultramarine, 4 c.

ISSUE OF 1853.—Ship sailing to left, in oval frame; inscribed with motto as above, "Postage" at top, and dated in corners "1. 8. 5. 3." Red, 1 c. Blue, 4 c.

ISSUES OF 1860-63.—Similar to last; ship to right, in garter; "Guiana" at top; all with "1. 8. 6. 0." in corners. Dark and light pink, red brown, brown, black, 1 c.

Orange, 2 c. Shades of blue, 4 c. Shades of pink, now mauve, 8 c. Shades of lilac and lavender, 12 c. Shades of green, 24 c.

ISSUE OF 1863.—Similar to last, larger size; dated "1. 8. 6. 3." Pale greenish and intense blue, 6 c. Shades of green, 24 c. Pink, now rose red, 48 c.

NEWSPAPER STAMPS.

ISSUE OF 1850.—Type-printed; value in centre; inscribed "British Guiana" near the margin. Yellow, 4 c. Green, 8 c. Blue, 12 c.

ISSUE OF 1862.—Square: centre blank; inscribed "British Guiana;" black printing on coloured paper (three issues); with outside frame formed of leaves, sprigs, or small circles; type-printed. Pink, 1 c. Yellow, 2 c. Light and dark blue, 4 c.

BUENOS AYRES.

EARLY ISSUE.—Transverse oblong: galloping horseman in landscape; "Correos" above; value below; "B^a. A^s." in lower corners; coloured impression. Yellow-buff, 4 r. Green, 6 r. Violet, 8 r. Blue, 10 r.

ISSUES OF 1858-59.—Transverse oblong: steam-ship in oval; inscribed "Correos" at top, "Buenos Aires" at bottom, and "Franco" at sides. Dark brown. Blue, 1 peso. Blue, 2 p. Green, 3 p. Red, brown, blue, 4 p. Yellow, brown, blue, 5 p.

ISSUE OF 1859-62.—Transverse oblong: profile of Goddess of Liberty to left, in circular frame; same inscription as 1858-59 issues. There is a great difference in the fineness of the engraving of these stamps; the best are the latest issued. Green, 4 reales. Blue, pink, 1 p. Red, blue, 2 p.

CHILI.

ISSUE OF 1860.—Profile of President Freire to left; inscribed "Colon Chile," and "Correos Porte Franco," on circular frame; printed on blue paper. Brown, 5 centavos. Blue, 10 c.

ISSUE OF 1861.—Similar to above, on white paper. Yellow, 1 c. Shades of red and red-brown, 5 c. Light blue, dark blue, 10 c. Green, 20 c.

ISSUE OF 1867-68.—Nearly similar: engraved; inscribed "Chile Colon." Orange, 1 c. Black, 2 c. Vermilion 5 c. Blue, 10 c. Green, 20 c.

CORRIENTES.

ISSUE OF 1856.—Profile of Liberty to left; inscribed "Corrientes" at top; value at bottom; black on blue paper. Eight types, all varying slightly. 1 real, M. C.

ISSUE OF 1860.—Similar to above; no value specified; on blue paper. 3 centavos.

ISSUE OF 1864.—Similar to above, without value; black on green paper.

ECUADOR.

ISSUE OF 1865.—Rectangular: coloured impression on white; armorial bearings, banners, and eagle in pearly framed circle; name and "Correos" above; value below; Greek bordering at sides. Blue, pale and intense, $\frac{1}{2}$ real. Nankin yellow, light and dark, water green, 1 r. Green, 2.

ISSUE OF 1866.—Arms within broad oval in ornamental frame; "Correos Ecuador" above; value beneath. Pale and deep red, 4 reales.

MONTEVIDEO.

ISSUES OF 1859-63.—Transverse oblong: sun with rays; inscribed "Correo Montevideo" in Roman letters; value once in large figures; star in corners. Shades of lilac-brown, 60 centesimos. Yellow, 80 c. Red, pink, 100 c. Blue, 120 c. Green, 180 c. Similar: with thin letters; same values, and Red, 240 c. Similar device to above value twice in figures; inscribed in Egyptian type; four dots in each corner. Blue, 120 c. Green, 180 c. Red, 240 c.

ISSUE OF 1864.—Arms in small oval; sun with rays at top; wreath and flags at sides; encircled at top and sides by "Republica Oriental," and value in curved label at bottom. Pink, red, 06 c. Green, 08 c. Orange, 10 c. Blue, 12 c.

ISSUE OF 1866.—Rectangular: figure of value partially obscured by armorial bearings; sun rising behind; "Republica del Uruguay" above; "Montevideo" below. Blue, 5 centecimos. Green, 10 c. Yellow, 15 c. Carmine, 20 c.

Rectangular: figure of value, armorial emblem, and "Centesimo" in central oval, within frame inscribed, "Republica Oriental del Uruguay Correos." Black impression, 1 centesimo.

ENVELOPES.

ISSUE OF 1866.—Oval impression: device nearly identical with the preceding labels. Blue, 5 centecimos. Green, 10 c. The same: spelling rectified "Centesimos."

NEW GRANADA.

ISSUE OF 1859.—Octagonal: arms on shield, in circle; inscribed "Confed. Granadina Correos Nacionales," and value. Green, 2½ centavos. Brown, lilac, drab, yellow, 5 c. Brown, yellow, 10 c. Light and dark blue, 20 c.

ISSUE OF 1860.—Similar to above; words and figures larger. Green, 2½ c. Lilac, blue, grey, 5 c. Brown, red, red-brown, 10 c. Blue, light and dark, 20 c. Rose, carmine, 1 peso.

ISSUE OF 1861.—Arms on shield, with nine stars, in oval frame; inscribed "Estados Unidos de Nueva Granada, Correos Nacionales." Black, 2½ c. Buff, yellow, 5 c. Blue, 10 c. Red, 20 c. P. nk, 1 p.

ISSUE OF 1862.—Octagonal: arms on shield, in circle, on ground composed of wavy lines; inscribed "E. U. de Colombia, Correos Nacionales." Lilac, blue, 10 c. Rose-red, 20 c. Green, 50 c. Lilac, 1 p.

ISSUE OF 1863.—Similar to above, with foliage at side, and nine stars at top, on white ground. Yellow, 5 c. Blue, 10 c. Red, 20 c. Green, 50 c.

ISSUE OF 1864.—Oblong octagon, with patterns outside corners; arms on shield on coloured ground, with white foliage at sides; nine stars at top on white ground; inscribed same as before; value at bottom. Yellow, 5 c. Blue, 10 c. Red, 20 c. Green, 50 c.

ISSUES OF 1865.—Arms in oval, with eagle and banners; value below; coloured impression. Orange, 5 c. Violet, 10 c. Blue, 20 c. Green, 50 c. Carmine, 1 peso. Device different: rose, 1 c.

ISSUE OF 1866.—Slightly dissimilar device. Green, 50 c.

1865.—Newspaper stamp. Triangular. Arms; inscription as above; on tinted paper. Black, 2½ c. For registered letters: large "R" in star, surrounded by inscription and value. Black, 5 c. For unpaid letters: wreath enclosing large "A;" inscription above; value below. Black, 5 c.

ISSUE OF 1866.—Stamps for additional postage: rectangular; arms half encircled by "Sobre porte;" value below; device varying in each stamp; black impression on coloured paper. Blue, 25 cent^s. Yellow, 50 c. Lilac, 1 peso.

ISSUE OF 1867.—Octagonal: arms in shield, surmounted by nine stars within frame inscribed "EE UU de Colombia Correos Nacionales, 5 C^s." Yellow, orange, 5 c. Rectangular: arms and inscriptions all varying; name above, value below. Lilac, 10 c. Blue, 20 c. Green, 50 c. Vermilion, 1 peso. Name at sides; black on coloured

glazed paper. Green, 5 p. Vermilion, 10 p. Black on colour; "Sobre Porte."
Buff, 25 c. Pale green, 50 c. Pale blue, 1 p.

LOCALS.

STATE OF BOLIVAR.—Small rectangle: arms in centre; inscribed "E^s. U^s. de Colombia, Correos del Estado S de Bolivar. Pink, green, 10 c. Vermilion, 1 p.

STATE OF MAGDALENA.—Arms: inscription; and date, 1867. Pale blue, 20 c. (Fiscal.)

PACIFIC OCEAN STEAM NAVIGATION COMPANY.

These stamps were used for letters transmitted from one Peruvian port to another.

Oblong: steam-ship enclosed in oval frame; "P. S. N. C." in corners. Green, yellow, blue, red, brown, $\frac{1}{2}$ oz., 1 real. Green, yellow, blue, red, 1 oz., 2 r.

PARAGUAY.

ISSUE OF ESSAYS.—Lion, with pole and cap of Liberty, in oval frame; inscribed "Re del Paraguay Correo;" not any value denoted. Blue, red, green, lilac, pale brown, pink, black, yellow, brown.

PERU.

Square: arms (cornucopia, llama, and tree) on shield, surrounded by wreath, enclosed in circle with shaded ground; inscribed "Correos Porte Franco," and value. Blue, grey, 1 dinero. Red, brown, 1 peseta (variety, smaller letters).

Square: similar to above; border consisting of single lines. Blue, 1 d. Rose, 1 peseta. Yellow, $\frac{1}{2}$ peso.

Square: similar to above, on white ground. Blue, 1 d. Red, rose, 1 peseta.

ISSUE OF 1863.—Square: embossed, similar to above; arms in circle. Pale brown, red, rose, black, 1 d. Brown, 1 peseta.

ISSUE OF 1866.—Rectangular; pair of llamas in shield; "Correos (5) Peru" "Porte Franco" above; value in words, below. Green, 5 centavos.

ISSUE OF 1867.—Llamas variously framed. Vermilion, 10 c. Brown, 20 c.

VENEZUELA.

ISSUE OF 1859.—Arms, with cornucopia at top and foliage at sides, on lined ground; inscribed "Correo de Venezuela;" on blue paper. An issue in 1860 on white paper; the colours of these are darker than the 1859 issue. Yellow, $\frac{1}{2}$ real. Blue, 1 r. Red, 2 r.

ISSUE OF 1862.—Similar to above, with larger frame and white ground. Green, $\frac{1}{4}$ centavo. Lilac, $\frac{1}{2}$ c. Purple, dark brown, 1 c.

ISSUE OF 1863.—Eagle grasping thunderbolt, in circle; at top seven stars and "Federacion;" "Venezolana" and value beneath. Dark yellow, $\frac{1}{2}$ r. Blue, 1 r. Green, light, dark, 2 r.

ISSUE OF 1864.—Same as above. Brownish pink, $\frac{1}{2}$ c. Slate, 1 c.

ISSUE OF 1866-67.—Square: arms within octagonal frame, inscribed "Correo de los EE UU de Venez^a." and value in words. Pink, $\frac{1}{2}$ real. Red, 1 r. Yellow, 2 r. Olive-green, $\frac{1}{2}$ centavo. Bluish green, 1 c.

SPECIAL STAMPS FOR LA GUAIRA.

ISSUE OF 1864.—Steam-ship at top; "Paquete" and value on engine-turned disc beneath; date in corners; "Pto Cabello" at bottom; "San Tomas" and "La Guaira" at sides. Red, pink, blue, $\frac{1}{2}$ r. Green, light and dark, yellow, 2 r.

Smaller; inscription in English; black on colour. White, $\frac{1}{2}$ c. Pink, 1 c. Green, 2 c. Yellow, 3 c. Blue, 4 c.

WEST INDIES.

ANTIGUA.

ISSUE OF 1862.—Profile of Queen Victoria to left, on a ground composed of stripes in patterns; value at bottom. Brown-red, rose-red, bright red, 1d. Green, 6d.

BAHAMAS.

ISSUE OF 1861.—Portrait of Queen Victoria, crowned, in white-lined oval frame; inscribed "Bahamas Interinsular Postage." Red, brown-lake, rose-lake, 1d.

ISSUE OF 1862.—Similar to above, with small stars in corners; inscribed "Bahamas Postage." Rose-red, pink, 4d. Various shades of lilac, mauve, 6d.

ISSUE OF 1863.—Profile of Queen Victoria to left, in twisted oval frame; devices in oval at bottom corners. Pale green, 1s.

BARBADOS.

ISSUED 1857-65.—Figure of Britannia, with ship in background, on a groundwork similar to the 1d. English stamp; name at bottom; stars in corners; not any value denoted; on white or blue paper. Green, various shades ($\frac{1}{2}$ d.), blue (1d.), slate (2d.), rose (4d.), red (6d.), dark slate (1s.). 1865.—Brick red, 4d.

Similar to above; name at top; value at bottom. Rose-red, 6d. Black, grey, 1s.

BERMUDAS.

ISSUE OF 1865.—Diademed head of Queen to left: name above; value below. Red, 1d. Lilac, 6d. Green, 1s.

ISSUE OF 1866.—Similar. Blue, 2d.

CUBA, MANILA, AND PORTO RICO.

ISSUE OF 1855.—Profile of Queen of Spain to right in circle, on blue paper; inscribed "Correos" above, curved water-marked lines. Blue, $\frac{1}{2}$ real plata. Green, 1 r. p. Red, 2 r. p. Shades varying.

ISSUE OF 1856.—Similar; with crossed water-mark lines; colours and enumeration the same.

ISSUE OF 1857.—Similar; no water-mark; colours and enumeration the same.

Similar, with "Y $\frac{1}{2}$," printed in black or blue, on profile. 2 r. p. (cuartillo).

ISSUE OF 1864.—(For Cuba, &c., only.) Profile of Queen, with diadem, to left in oval; "Correos" at top, on tinted paper. Black (head in circle) on yellow, $\frac{1}{2}$ r. p. Green on pink, $\frac{1}{2}$ r. p. Blue on flesh, 1 r. p. Red on flesh, 2 r. p.

ISSUE OF 1866.—Similar to the Spanish series for 1864 (date and monetary denomination excepted). Lilac, 5 centimos. Blue, 10 c. Green, 20 c. Pink, 40 c.

ISSUE OF 1867.—The same with date altered.

ISSUE OF 1868.—Diademed profile of Queen to left in circle; "Ultramar" above; "Corr." at corners; value below. Lilac, 5 c. Blue, 10 c. Green, 20c. Pink, 40 c.

GRENADA.

ISSUE OF 1861.—Portrait of Queen Victoria, crowned, in white-lined oval frame; small cross in each corner; name at top; value at bottom. Green, two shades, 1d. Rose, now red, 6d.

GUADALOUPE, MARTINIQUE, &c.

ISSUES OF 1859-65.—Square: eagle under imperial crown, within circular inscription, "Colonies de l'Empire Français," and value. Water and olive green, 1 c. Bright green, 5 c. Yellow-brown, 10 c. Blue, 20 c. Vermilion, 40 c. Carmine, 80 c.

These stamps are employed in all the French colonies but Algeria, which uses the current issue.

JAMAICA.

ISSUE OF 1860.—Profile of Queen Victoria to left, with laurel wreath. Light blue, 1d. (in circular frame). Pink, 2d. (circular frame). Orange, 4d. (circular frame). Lilac, grey, 6d. (hexagon frame). Brown, brownish yellow, 1s. (oval frame).

ISSUE OF 1863.—Similar to above. Green, 3d. (oval frame).

The large, handsome, pink 1s. receipt stamp is sometimes employed for postage. The threepenny and threepenny halfpenny arms of the island used to figure in collections as old issues.

NEVIS.

ISSUE OF 1861.—Picture, representing Benevolence (three women); bordering of each stamp differs. Brownish red, pinkish red, 1d. (value in light letters). Rose, 4d. (light letters). Violet-grey, 6d. (dark letters). Green, 1s. (light letters).

ISSUE OF 1867.—Same. Bright red, 1d. Orange, 4d. Light Green, 1s.

ST. DOMINGO.

ISSUE OF 1862.—Small square: escutcheon bearing cap of Liberty and two flags; inscriptions "Correos" on the right, value in italics on the left. Black impression on colour. Pink, $\frac{1}{2}$ real. Green, 1 real.

ISSUE OF 1865.—Similar: value in roman letters. Green, $\frac{1}{2}$ real. Buff, 1 real.

ISSUES OF 1866.—Upright oblong rectangle. Shield bearing cross, cap of Liberty, and flags as the preceding; surmounted by inscription "Dios Patria Libertad," "Correos" above; value in words below. Black on pale lavender and lilac, $\frac{1}{2}$ r. Black on water green and pale lavender, and on rose lilac (UN in capitals), 1 real.

The pink, 2 reales, is fictitious.

ST. KITT'S.

ESSAYS OF 1866.—Rectangular: portrait of Queen on engine-turned background; within oval band bearing name and "postage;" no value specified. Blue, black, green, brown.

ST. LUCIA.

ISSUE OF 1860.—Profile of Queen Victoria in white-lined oval frame; not any value denoted. Dark red, 1d. Blue, 4d. Green, 6d.

ISSUE OF 1864.—Similar, but more finely engraved. Pinkish red, 1d. Indigo, 4d. Light green, 6d.

ISSUE OF 1865.—Similar. Black, 1d. Yellow, 4d. Violet, 6d. Orange, 1s.

ST. THOMAS, &c.

ISSUE OF 1860.—Like Danish of same date. Rose brown, brown on tinted paper, 3 cents.

ISSUE OF 1867.—Same: pink on white paper.

ST. VINCENT.

ISSUE OF 1860.—Profile of Queen Victoria, enclosed in network border; small stars in corners. Pinkish-red, brown-red, 1d. Green, two shades, 6d.

ISSUE OF 1866.—Similar. Blue, 4d. Slate, 1s.

TRINIDAD.

ISSUES OF 1851-58.—Figure of Britannia, with ship in background; value not denoted; "Trinidad" at bottom; on white or blue paper. Red, 1d. Grey, blue, 6d. Black, brown, 1s.

Similar to above, badly lithographed; colours and enumeration the same.

ISSUES OF 1859-66.—Similar to above; "Trinidad" at top; value at bottom. Various shades of lilac and violet, 4d. Shades of green, 6d. Bluish and brownish black, mauve, 1s. Various shades of red (no value specified), 1d.

TURK'S ISLAND.

ISSUE OF 1867.—Small rectangle: profile of Queen Victoria to left; name above, value below. Pink, 1 penny. Rusty black, 6 pence. Slate, 1 shilling.

VIRGIN ISLANDS.

ISSUE OF 1867.—Rectangular: figure of Virgin holding lamp, and surrounded by lamps; name above, value below. Green, 1 penny. Pink, 6 pence. Figure of Virgin crowned with stars. Red-brown on white, 4 pence. Black on red, ditto bordered, 1 shilling.

AUSTRALASIA & POLYNESIA.

NEW CALEDONIA.

ISSUE OF 1861.—Head of the Emperor Napoleon III. to the left, in a very irregular octagon: "N^o. Calédonie" above, value twice repeated, and "Postes" below. Lithographed black impression; fifty stamps, all varying, in one sheet, 10 c.

NEW SOUTH WALES.

View of sea-coast, and church in distance; figures in the foreground; inscribed "Sig. Nov. Camb. Aust.," with motto, "Sic fortis Etruria crevit," at bottom; slight differences in each stamp in colour and device. Various reds, 1d. Grey, blue, light and dark, 2d. Green, brown, pink, 3d.

Profile of Queen Victoria to left, with laurel wreath; "Postage" in arch over head; printed on white and blue paper. Red, dark orange, 1d. Blue, 2d. Green, 3d. Brown, reddish brown, 6d. Orange, 8d.

Similar to last; "Registered" printed in two colours; value not denoted. Red and blue. Yellow and blue.

ISSUE OF 1862.—Profile of Queen Victoria to left, with diadem; "Postage" in arch immediately over the head; small pattern in top corners, different to bottom. Orange, dark brown, red, 1d. Blue, light blue, 2d. Green, light and dark, 3d.

Similar to last; "New South Wales" in arch over head. Light and dark blue, 2d.

Square, large size: profile as before; in ornamented circular frame, which is enclosed in a white-lined six-sided frame. Green, 5d. Various shades of lilac, green, and brown, 6d.

Square, large size: similar to last, in white-lined octagonal frame. Orange, yellow, 8d. Red, blue, pink, 1s.

Circular: similar to above; head crowned; very richly engraved. Dark lilac, 5s.

ISSUE OF 1864.—Profile of Queen Victoria to left, with diadem, in oval frame; inscribed "New South Wales Postage" at top; value at bottom; ornamental work in corners; printed on glazed paper. Deep pink, 1d. Issue of 1862 reprinted: pale red, 1d.

ISSUE OF 1865.—Similar to 1864, but better engraved.

ISSUE OF 1867.—Diademed profile of Queen to left; name above; value below; Lilac, 10p.

ISSUE OF 1868.—, 4p.

NEWSPAPER WRAPPER.

ISSUE OF 1864.—Oval: profile of Queen Victoria embossed in white, with diadem, on coloured ground, bearing four white stars, surrounded by white oval frame; inscribed with value at top, "New South Wales" at bottom in coloured letters. Pink, 1d.

ISSUE OF 1865.—Rectangular: same impression as penny label.

NEW ZEALAND.

ISSUE OF 1858-60.—Small portrait of Queen Victoria, ermine robe across shoulder in circular frame; printed on blue and white paper. Orange, red, 1d. Blue, 2d. Reddish brown, 6d. Blue-green, green, dark and light, 1s.

ISSUE OF 1862.—Similar to above. Light and dark brown, 6d.

ISSUE OF 1863.—Similar to above. Blue, 2d. Violet-brown, 3d. Shades of dark brown, 6d.

ISSUE OF 1865.—Pink, 4d.

ISSUE OF 1866.—Yellow, 4d.

On letters that were wrecked in the "Colombo" are found, red, 1d., changed to brown; and blue, 2d., to lilac.

PHILIPPINES.

ISSUE OF 1854 y 55.—Profile of Queen to right in pearled circle; inscribed "Correos Interior." Orange, 5 c. Pink, 10 c. Blue, 1 real. Green, 2 r.

Similar; inscription different. Orange, 5 cuartos. Lilac, 10 c.

Similar, in oval; inscribed "Correo, 1854 y 55," and "Franco Porto." Red, 5 c. Pink, 10 c. Dark blue, 1 r. Green, 2 r.

ISSUE OF 1860.—Profile of Queen to right in circle; inscribed "Correos Interior;" value denoted. Scarlet, 5 c. Rose-lilac, 10 c. Of these there are many varieties.

ISSUE OF 1864.—Similar to Spain 1864.—Black on yellow paper, 3½ Cent. P^o. F^e. Green on pink, 6½ Cent. P^o. F^e. Blue on flesh, 12½ Cent. P^o. F^e. Vermilion on rose, 25 Cent. P^o. F^e.

QUEENSLAND.

ISSUE OF 1861.—Portrait of Queen Victoria in oval frame; scroll-work at sides; inscribed at top "Queensland," and value at bottom. Red, scarlet, 1d. Blue, 2d. Brown, 3d. Green, 6d. Plum-brown, 1s.

Similar to above; inscribed "Queensland Registered;" not any value denoted; cut corners. Yellow-brown, 6d.

CURRENT ISSUE.—Same values; colours much lighter. Dark blue, 2d.

ISSUE OF 1866.—Lilac, 4d.

ISSUE OF 1867—Pink, 5s.

SANDWICH ISLANDS.

ISSUE OF 1852.—Rectangular: figure of value in square ornate border; "Hawaiian Postage" above; value in words beneath; black impression. 2 cents, 5 c., 13 c.

ISSUE OF 1860.—Small portrait of King Kamehameha the Great; value in top corners in figures, and at bottom; "Honolulu" and "Hawaiian Islands" at sides. Blue, 5 cents (on white and blue paper). Red, 13 c. (Hawaiian, 5 c.; U. S., 8 c.).

ISSUE OF 1862.—Large portrait of the King Kamehameha IV.; foliage on each side of stamp, "Elua Keneta" at bottom, "Uku Leta" and value at top. Red, pink, light and dark, 2 c.

ISSUE OF 1864.—Portrait of the King Kamehameha IV. in white-lined oval frame, surrounded by ornamental work, and label at top inscribed "Hawaii," at bottom "Elua Keneta;" figures in ovals at top corners denoting value. Bright red, 2 cents.

ISSUE OF 1865.—Provisional stamp; figure of value; blue on bluish paper, 5 cents.

ISSUE OF 1866.—Portrait of the present King in frame similar to that of the preceding stamp. Azure (Elima keneta) 5 cents.

INTERINSULAR POSTAGE.

ISSUES OF 1860-61.—Large figure denoting value in centre; "Inter Island" at top; "Hawaiian Postage" left; "Uku Leta" right. Coloured impression on white or bluish paper. Black, pale blue, 1 c. Black, pale and dark blue, 2 c.

ISSUES OF 1865.—The same reprinted in black on Bath cream-laid paper.

Similar; but "Uku Leta" above; "Inter Island" left. Blue, 1 c., 2 c., 5c.

SOUTH AUSTRALIA.

ISSUE OF 1859.—Profile of Queen Victoria to left, in circular frame; "Postage" and "South Australia" at top; value, in words, at bottom. Dark green, 1d. Red, two shades, 2d. Dark blue, 6d. Yellow, 1s.

ISSUES OF 1861-64.—Similar to above, in oval frame. Pale lilac, 9d. In circular frame, grass and sap green, 1d. Scarlet, 2d. Blue, violet, blue on tinted paper, 6d. Orange, dark brown, red-brown, 1s.

ISSUE OF 1866-67.—Provisional? The ninepenny printed in orange (now yellow), and over-stamped in black with the word "Tenpence" beneath in a straight line.

ISSUE OF 1867.—Rectangular: coronetted profile of Queen to left in circle; name above, value below. Lilac, 4d. Pink, 2s.

TASMANIA, OR VAN DIEMEN'S LAND.

ISSUE OF 1858.—Profile of Queen Victoria to right, in oval frame; inscribed "Van Diemen's Land." Blue, 1d.

Octagon: similar to above, in circular frame. Red-brown, orange, 4d.

Circular: profile of Queen Victoria to left; no name. Red, 10d. This is doubtful.

ISSUE OF 1860-63.—Portrait of Queen Victoria; inscribed "Tasmania" at top. Lilac, greenish grey, 6d. Red, 1s.

Similar to last; inscribed "Van Diemen's Land." Reddish brown, brownish red, 1d. Green, light, bluish, and dark, 2d. Blue, light and dark, 4d.

VICTORIA.

EARLY ISSUES.—Queen Victoria on throne (for Melbourne). Brown, 2d. Hue and engraving vary in different stamps.

Similar to last; "Victoria" in arch at top. Green, 1d. Blue, 6d.

Half-length portrait of Queen. Pink, buff, red, 1d. Light brown, various shades, 2d. Blue, light and dark, 3d.

Profile of Queen Victoria to left; inscribed "Victoria" at top, "Postage Stamp" at sides. Black, yellow, orange, 6d. Green, 2s.

Profile of Queen Victoria to left, in oval frame, with diadem; devices in each corner of stamp. Green, 1d. Lilac, lavender, 2d. Pink, red, 4d.

Square: profile of Queen to left, in octagon; inscription in circle. Light and dark blue, 1s.

ISSUES OF 1861-62.—Similar to last, without devices in corners. Green, 1d.

Profile of Queen Victoria to left, in oval frame, with diadem; figures at sides of oval frame in small ovals; white letters. Light and dark blue, 3d. Pink, 4d. Orange, black, 6d.

ISSUE OF 1862.—Similar to last; large black letters. Black, 6d.

ISSUE OF 1863.—Laureated profile of Queen Victoria to left, in circular frame; "Victoria" at top; value at bottom. Pink, light, dark, 4d.

ISSUE OF 1864-65.—Same as last. Light and dark violet, 2d. Green, 1d. Orange, 8d.

ISSUE OF 1865.—Same, enclosed in octagon: square. Dark blue on blue, 1s.
Like the former, of same value. Blue on yellow, 2s.

ISSUES OF 1866.—Rectangular; diademed head of Queen to left in oval frame. Blue, 6d. Greenish grey, brown on pink, 10d. Impression similar to the superseded of same value. Rose, 3d. Profile of Queen in oval frame, inscribed "Victoria" and value. Figure of value at each angle. Rose-lilac, pale and deep, 3d.

ISSUE OF 1868.—Square: laurelled head of Queen to left, in ornamented circular frame, inscribed with name and value; crown above. Dark blue on yellow, 5s.

SPECIAL STAMPS.

Registered: profile of Queen Victoria to left, with diadem. Pink, blue frame and letters, 1s.

Too late: similar to above. Lilac, green letters, 6d.

WESTERN AUSTRALIA.

ISSUES BEFORE 1858.—Swan swimming to left; inscribed at sides "Western Australia," and "Postage" at top. Black, 1d. (oblong). Black on red, 2d. (octagonal). Blue, 4d (octagonal). Bronze, 6d. (octagonal). Yellowish brown, rich brown (oval), 1s.

ISSUE OF 1861.—Transverse oblong rectangular: similar device to above. Rose-red, 1d. Brownish black, scarlet, 2d. Green, 6d.

ISSUES OF 1862-64.—Similar to above. Brownish red, 1d. Blue, light and dark, 2d. Blue, scarlet, 4d. Puce-brown, violet on tinted and white paper, 6d. Green, 1s.

ISSUE OF 1865.—Similar to last. Brownish yellow, 1d. Yellow, 2d. Carmine, 4d. Violet, 6d. Bluish green, 1s.

Some of the above stamps are found with holes pierced through them. This is done before giving them to convicts for payment of their letters home: by this means their letters can be easily recognised. They are also for general official use.

ALFRED SMITH & CO.'S

FOREIGN STAMP AND CREST ANNOUNCEMENTS.

ALFRED SMITH & CO. have always for sale a large stock of the following:—

FOREIGN POSTAGE STAMPS.	SHEETS OF CRESTS.
CHEAP PACKETS of FOREIGN STAMPS.	CHEAP PACKETS OF CRESTS.
POSTAGE-STAMP ALBUMS.	CREST ALBUMS.
POSTAGE-STAMP CATALOGUES.	CREST BOOKS.
PRICE CATALOGUES OF POSTAGE STAMPS.	HERALDIC SHEETS.

For full particulars see ALFRED SMITH & Co.'s STAMP AND CREST CIRCULAR, sent gratis and post free on application.

ALFRED SMITH & CO.,
THE FOREIGN STAMP AND CREST DEPOT,
QUEEN SQUARE HOUSE, BATH.

Published every month, price 4d., post free, The

STAMP-COLLECTOR'S MAGAZINE,

Illustrated with beautifully executed Engravings of New and Rare Stamps.

An unused Foreign Stamp is Given Away with each Number.

LONDON: E. MARLBOROUGH & CO.

BATH: ALFRED SMITH & CO., QUEEN SQUARE HOUSE.

Now ready, price 1s. 6d., Post Free, the Fourth Edition of the

ILLUSTRATED CATALOGUE OF POSTAGE STAMPS.

By Dr. J. E. GRAY, of the British Museum.

LONDON: E. MARLBOROUGH & CO.

BATH: ALFRED SMITH & CO., QUEEN SQUARE HOUSE.

Just Published, in Illustrated Wrapper, post free, 7d., the Eighth Edition of

ALFRED SMITH & CO.'S

PRICE CATALOGUE OF POSTAGE STAMPS.

CONTAINING THE MARKET VALUES OF ALL STAMPS, AND ILLUSTRATIONS
OF THE STAMPS OF EVERY COUNTRY.

LONDON: E. MARLBOROUGH & CO.

BATH: ALFRED SMITH & CO., QUEEN SQUARE HOUSE.

Address—QUEEN SQUARE HOUSE, BATH.

“Should be in the hands of every Postage-Stamp Collector.”

Now ready, 74 pp., Fcap. Svo., Price One Shilling, Post Free,

Postage-Stamp Forgeries; or, the Collector's Vade-Mecum.

CONTAINING MINUTE DESCRIPTIONS OF 700 FALSE STAMPS, NOT INCLUDING ANY CHYMICALLY CHANGED ONES.

By J. M. STOURTON, F.A.S.L.

WITH AN

Introductory Letter on Ocean Penny Postage, from KENNETH MACKENZIE, Esq., F.S.A., F.A.S.L.

“The distinctive characteristics of the genuine stamps, and their several imitations, are so accurately portrayed as to be unmistakably recognizable in cases of doubt.”—*The Stamp-Collector's Magazine*.

“We can confidently recommend it to our readers, feeling assured that it will be found to be of valuable service to the collector and dealer.”—*The Collector's Circular*.

LONDON: TRÜBNER & CO., 60, PATERNOSTER ROW.

B. YORK & CO.,

60, CITY ROAD, LONDON, E.C. (Ten minutes' walk from the Bank,

Foreign Booksellers, and Dealers in Postage Stamps of all Nations.

Prices for Packets of Foreign Postage Stamps, all post free, 1d. extra:—

	s.	d.		s.	d.
No. 1 contains 12 Varieties	0	2	No. 7 contains 100 Varieties	2	0
No. 1a .. 16 .. well assorted (our only	0	3	No. 8 .. 30 .. (Colonial Stamps only)	2	0
No. 1b .. 36 .. " " " "			No. 9 .. 150 .. " " "	5	0
Packets containing duplicates)	0	6	No. 10 .. 160 .. (Colonial and other		
No. 2 .. 25 .. " " " "	0	6	rare Stamps)	5	0
No. 3 .. 12 .. (Colonial Stamps only)	0	6	No. 11 .. 50 .. " (every one obsolete)	5	0
No. 4 .. 50 .. " " " "	1	0	No. 12 .. 100 .. " of rare and obsolete		
No. 5 .. 20 .. (Colonial Stamps only)	1	0	Colonial and Continental Stamps	10	6
No. 6 .. 12 .. " (every one obsolete)	1	0			

All Stamps Warranted Genuine.

Stamps sent on approbation on receipt of a Stamped Envelope. Remittances for Stamps, &c., under 10s., can be made in unused English Postage Stamps; above that amount, by Post-office Order, payable to—

B. YORK & CO., CITY ROAD, LONDON, E.C., at the City Road Post Office.

YOUNG & STOCKALL,

Wholesale and Retail Dealers in Foreign and Colonial Postage Stamps.

The Largest Dealers in the World. Established Six Years.

Central Chambers, 17, South Castle Street, Liverpool.

THEIR NEW PRICE LIST

(22 pages with cover) of about 2500 varieties of stamps, giving full particulars of form, value, colour, date of issue, price, SINGLY and PER DOZEN, USED and UNUSED. Contents, &c., of about FIFTY DIFFERENT PACKETS, consisting of UNUSED and USED STAMPS, OBSOLETE and PRESENT ISSUES, including COLONIALS, LOCAL AMERICAN, LOCAL HAMBURG, &c., &c. These packets will be found the CHEAPEST and BEST yet offered to the public; also prices, &c., of MOENS' OPEN'S, and STAFFORD SMITH'S NEW ALBUMS, from 4s. to 21s. This list is carefully revised each month, and alterations made accordingly as there may be a rise or fall in the prices of different stamps; all new issues are

included, if they reach the publishers before the 25th of each month; and this List, taken altogether, will be found the LARGEST, CHEAPEST, and BEST Price Catalogue of POSTAGE STAMPS yet issued, and it will be sent, on application, *post free, to any address in the United Kingdom*; or abroad on receipt of four stamps for postage.

These Lists cost Y. & S. about Sixpence each; but they have determined to make NO CHARGE for them, as they do not intend to advertise the prices of their stamps, &c., in the Magazines for the future, but confine them solely to their Price List; and they hope all their Friends or intending Purchasers of Postage Stamps or Albums will send for their List before making their selections.

Young & Stockall warrant all Stamps sold by them to be Genuine.

CENTRAL CHAMBERS, 17, SOUTH CASTLE STREET, LIVERPOOL.

Price 5s. post-free (60 stamps), Fourth Edition of

Famous Girls who have become Illustrious Women;

Forming Models for Imitation for the Young Women of England. Illustrated with a Portrait of Her Majesty the Queen, taken from life in 1861.

THE LAST NEW WALTZ AND NEW QUADRILLE.

Price 1s., post free, the latest Edition of

Etiquette of the Ball-Room,

And Guide to all the New and Fashionable Dances; containing a simple and correct description of the New Waltz, "Valse Courante," and the Steps and Figures in the last new Quadrille, "Quadrille des Dames;" and of all the most admired Quadrilles, Valses, Mazourkas, Galops, and Country Dances. With Hints and Instructions respecting the Toilette and Deportment of Ladies and Gentlemen. By Mrs. NICHOLAS HENDERSON.

"This is the best Ball-room Guide published."

HANDBOOK OF GAMES.

Price 1s., by post 1s. 2d. (14 stamps).

A Handbook of Games;

Showing How to Play Chess, Billiards, Bagatelle, Whist, Loo, Cribbage, Draughts, Backgammon, Dominoes, and Minor Games at Cards.

HANDBOOK FOR LADIES.

Price 1s., by post 1s. 2d. (14 stamps).

A Handbook for Ladies;

Containing Etiquette for Ladies; Etiquette of Courtship and Marriage; the Language of Flowers; the Toilette, with Advice on the Improvement and Preservation of the Skin, Teeth, Eyes, Hair, and Feet. With valuable Receipts.

HANDBOOK FOR GENTLEMEN

Price 1s., by post 1s. 2d. (14 stamps).

A Handbook for Gentlemen.

Containing Etiquette for Gentlemen; How to Swim and How to Skate; How to Angle; How to Play Cricket and Football.

LONDON: W. STEVENS, 421, STRAND, W.C.; AND BY ORDER OF ALL BOOKSELLERS.

THE "ILLUSTRATED LONDON NEWS," in reference to pure literature, says: "The 'Family Herald,' that joy to tens of thousands of innocent English households."

"The Welcome Guest of every Home."

THE "Saturday Review" says, "The FAMILY HERALD stands at the head, both in age and popularity, of all the penny serials."

THE ILLUSTRATED LONDON NEWS in reference to pure literature, says, "The FAMILY HERALD, that joy to tens of thousands of innocent English households."

THE "British Quarterly Review" says, "The FAMILY HERALD is well considered, with reference to its aims, and is various and amusing, with a fair amount of utility intermixed. Of all these weekly serials, we are inclined to consider the FAMILY HERALD the best."

THE "Literary Gazette" says, "It must be said of the FAMILY HERALD, that it is the purest reading of all purely amusing literature."

THE "Bookseller" says, "For amusing reading, such as may be admitted to one's household without fear of consequences, we may recommend the FAMILY HERALD. You get portions of a well written novel, novelettes, useful information interspersed throughout, Answers to Correspondents, alone worth the money, and other matters which will make readers either merrier or wiser, or perhaps both."

LEIGH HUNT, in his "Autobiography," says, "I call out every week for my FAMILY HERALD, a penny publication qualified to inform the best of its contemporaries."

ALL THE BACK NUMBERS ARE IN PRINT

(Registered for transmission abroad.)

AND MAY BE HAD BY ORDER OF ANY BOOKSELLER.

LEIGH HUNT, in his "Autobiography," says: "I call out every week for my 'Family Herald,' a penny publication qualified to inform the best of its contemporaries."

LEADING ARTICLES AND ESSAYS.

"There is a well-considered leading article or essay, every week, of an instructive or thoughtful character."—*Brit. Quarterly Rev.*

"Excellent specimens of strong, vigorous writing."—*Cheltenham Journal.*

"Its leading articles, for which the FAMILY HERALD has always been admired, are excellent."—*Monmouth Merlin.*

ANSWERS TO CORRESPONDENTS.

"The Editor is the confident and confessor in every station of life. The Answers to Correspondents cannot be artificial, a romance and a life history being embodied in almost each of them."—*Sat. Review.*

"Great upon curious matters, elucidating old customs, and opening up forgotten treasures."—*Gloacester Chronicle.*

"The Answers to Correspondents afford an insight to the operations of the heart and mind of society which cannot be obtained elsewhere."—*Welchman.*

NOVELS AND TALES.

"Its novels and tales are quite as well written as the best circulating library stories."—*Saturday Review.*

"Many of its tales, if given as three-volume novels, would find their way to every reading-room and library in the kingdom."—*Plymouth Herald.*

POETRY.

"There are charming verses let into its pages, like sunshine, to brighten them."—*British Quarterly Review.*

"Its poetical contributions are of a high character."—*Derby Telegraph.*

RANDOM READINGS.

"An anthology of stray humour judiciously selected."—*British Quarterly Review.*

"Its Random Readings are the recognized modern Joe Miller."—*Brighton Gazette.*

FAMILY MATTERS.

"Recipes and instruction in household matters, excellent in their way, are given week by week."—*Brit. Quarterly Review.*

"It contains admirable instructions to housekeepers, on the choice of provisions and housekeeping generally."—*Derbyshire Advertiser.*

THE RIDDLER.

"A fund of amusement is afforded to the home circle in its capital riddles, puzzles, enigmas, charades, and rebuses."—*Brighton Examiner.*

"The beginner will learn considerably from its arithmetical and mercantile questions; while the more practised will find much to work at in the mathematical, astronomical, nautical, and scientific questions, with the advantage of solutions, which are given in extenso."—*Cambridge Chronicle.*

FAMILY HERALD

Best Information
and Amusement.

TRANSMISSION ABROAD



REGISTERED FOR
POSTAGE AS
SECOND CLASS

Weekly, 1d.—Monthly, 6d.—Vols., 7s. 6d.—Complete Sets, 38 Vols., 45s.

"LIFE WITHOUT MIRTH IS LIKE A LAMP WITHOUT OIL."

CEDRIC CHIVERS BATH

1987