



Bibliotheca Landesiana

PHILATELIC SECTION

Granford 1447(1-2)

Brownford 1447(1)



WATSON'S

# Post Card and Letter Card CATALOGUE.



PART FIRST.

## EUROPE.

OCTOBER, 1889.



GEORGE H. WATSON,

Roselle,

UNION COUNTY,

NEW JERSEY, U. S. A.

CATALOGUE

—OF—

POST CARDS,

Letter Cards, &c.,

—OF—

EUROPE,

—TO—

OCTOBER, 1889.

—BY—

GEORGE H. WATSON,

ROSELLE, NEW JERSEY,

UNITED STATES OF AMERICA.

---

NEW YORK:

JOHN W. KEELER, PRINTER, 164 FULTON STREET.

1889.

## PREFACE.

---

**I**N presenting this work to collectors of cards and others, I would say that it is not entirely original with me, though most of the cards mentioned in these pages I have in my collection.

I began collecting cards a little over two years ago, and during the Summer and Fall of 1888 I started making a list of the cards I had; at that time I had before me the excellent catalogue of Mr. EDWARD ALEXANDER M. FRY, out of which I obtained an immense amount of valuable information, and with assistance from Mr. R. R. BOGERT, of New York, I completed my list, which list is now being published in *THE POST CARD*, a small leaflet devoted entirely to cards.

A month or so ago I received a copy of the Catalogue of European Post Cards, compiled by Messrs. GEORGE CAMPBELL and ADOLPHE SCHÖELLER, and with this latter catalogue I have gone over and revised my list, which is here presented.

I have therefore, decided to follow Messrs. CAMPBELL and SCHÖELLER's catalogue, and issue my list in parts, of which this is the first.

As regards the Official and Local cards, I would say that in some cases I have given them as well as I could, while in others they are omitted. I hope soon to obtain fuller information in regard to these cards, and when received the list of Official and Locals will be revised.

I am well aware that this work contains many errors and omissions, and would feel thankful to any one who will kindly let me know of them, so that in any future list they can be corrected.

In regard to the hingeing of the Reply paid cards, I have adopted a different mode of stating how they are hinged than do the National Philatelic Society of New York, or the standard of Europe. I think my way is the most simple.

T 3.	Hinged at TOP,	the reply is on the THIRD	page.
T 4.	" " "	" " "	FOURTH "
L 3.	" " LEFT,	" " "	THIRD "
L 4.	" " "	" " "	FOURTH "
R 3.	" " RIGHT	" " "	THIRD "
R 4.	" " "	" " "	FOURTH "
B 3.	" " BOTTOM	" " "	THIRD "
B 4.	" " "	" " "	FOURTH "

These correspond to other catalogues as follows :

THIS LIST.	NAT'L PH. SOCIETY.	EUROPEAN STANDARD.	FRY'S CATALOGUE.
T 3	F 1.	A	A
T 4	F 2.	B-C	B-C
L 3	F 3.	G	G
L 4	F 4.	H	H
R 3	F 5.	E	E
R 4	F 6.	F	F
B 3	F 7.	I	-
B 4	F 8.	D	D

GEORGE H. WATSON,

*Post Card Collector,*

ROSELLE, UNION COUNTY,  
NEW JERSEY, U. S. A.  
1st October, 1889.

Member Am'n Phil. Assoc., National Phil.  
Society, Brooklyn Ph. Club, Canadian  
Phil. Assoc., Int'l Society of Dresden,  
Copenhagen Club of Denmark.

# CATALOGUE OF POST CARDS, &c.

---

## ALSACE AND LORRAINE.

CARTE DE CORRESPONDENCE at top, TIMBRE in rectangle, two paragraphs of instructions at foot.

1. 1870. No value. Black inscription, first line of Par. 1 ends with ET.
  - A. Thin straw colored card, period at end of Par. 1 is nearly under I of inscription.
  - B. Thick yellow buff card, period at end of Par. 1 is under N.
  - C. Thick yellow buff card. In Par. 2, P of POUR is over O of CRAYON.

---

2. 1870. No value, black inscription, first line of Par. 1 ends with PRE.
  - A. In Par. 2, P of POUR is after final period.
  - B. P is before final period, and S of COMMUNICATIONS is in italics.

---

3. 1870. No value, black inscription, first line of Par. 1 ends with PRECI.
  - A. Thick yellow card, P of POUR is between Y and O of CRAYON.
  - B. Thin brownish gray card, P of POUR is over N of CRAYON.
  - C. Thin brownish gray card, P of POUR is over final period.

## AUSTRIA.

CORRESPONDENZ-KARTE arched over arms of Austria, stamp, with head of Emperor, at right, AN at left of first dotted line, type set frame.

1. 1869. 2 kr. black on buff.
  - A. Yellow stamp.
  - B. Orange stamp, period after KR in stamp.
  - C. Orange stamp, no period after KR in stamp.

Same as above, but ADRESSE at left of first dotted line.

2. 1871. 2 kr. black on buff, on reverse the date is towards the left side.
    - A. Yellow stamp.
    - B. Orange stamp.
  3. 1872. 2 kr. black on buff, on reverse the date is towards the right side.
    - A. Yellow stamp.
    - B. Orange stamp.
  4. 1872. 2 kr. black on buff, no date on the reverse.
    - A. Yellow stamp.
    - B. Orange stamp.
- 

CORRESPONDENZ-KARTE in straight line in centre, arms at left, stamp at right with head of Emperor, no frame.

5. 1876. 2 kr. brown on dark buff.
  6. 1880. 2 x 2 kr. brown on dark buff. T 3.
- 

WELTPOST-VEREIN, &c., at top, arms at left, stamp, head of Emperor, at right no frame.

7. 1880. 5 kr. red on buff.
    - A. With star in lower right corner of card.
    - B. Without the star.
  8. 1880. 5 x 5 kr. red on buff. T 3.
    - A. Same as 7 A.
    - B. Same as 7 B.
- 

CORRESPONDENZ-KARTE in centre, stamp, with double-headed eagle, at right.

9. 1883. 2 kr. brown and black on buff.
  10. 1883. 2 x 2 kr. brown and black on buff. T 3.
- 

Same as Nos. 7 and 8, but stamp has double-headed eagle.

11. 1883. 5 kr. red on buff.
  - A. (ADMINISTRATION D'AUTRICHE) is 47½ mm. long, the fine line under top line of inscription is 69 mm. long.
  - B. Same as A, but the fine line at top only 67 mm. long.
  - C. (ADMINISTRATION D'AUTRICHE) is 52 mm. long.
12. 1883. 5 x 5 kr. red on buff. T 3.
  - A. Same as 11 A, on original card.
  - B. Same as 11 C, on original card.



## AUSTRIA (BOHEMIAN PROVINCES).

CORRESPONDENZ-KARTE and KORESPONDENCNI LISTEK  
in two arched lines over arms, type-set frame.

1. 1871. 2 kr. black on buff, on reverse the date is towards the left side.
  - A. Yellow stamp.
  - B. Orange stamp.
2. 1872. 2 kr. black on buff, on reverse the date is towards the right side.
  - A. Yellow stamp.
  - B. Orange stamp.
3. 1872. 2 kr. black on buff, no date on reverse.
  - A. Yellow stamp.
  - B. Orange stamp, period after KR. in stamp.
  - C. Orange stamp, no period after KR.
4. 1873. 2 kr. black on buff, BOHM on lower right corner of card.
  - A. Yellow stamp, accent over o of BOHM.
  - B. Yellow stamp, no accent over o of BOHM.
  - C. Orange stamp, no accent over o of BOHM.
  - D. Orange stamp, no period after KR in stamp.
5. 1874. 5 kr. black on buff, same as No. 4. The stamp on this card is usually covered by a 2 kr. adhesive stamp.
  - A. Yellow stamp.
  - B. Orange stamp.
  - C. Orange stamp, no period after BOHM.

---

CORRESPONDENZ-KARTE and KORESPONDENCNI LISTEK in  
two straight lines in centre, arms at left, stamp, with  
head of Emperor, at right.

6. 1876. 2 kr. brown on dark buff cards.
  - A. AN at left of first dotted line.
  - B. AN omitted, accent over s of KORESPONDENCNI.
  - C. AN omitted, no accent over the s.
7. 1881. 2 x 2 kr. brown on dark buff, T 3, same as 6 C.

---

Inscription as above in two straight lines, arms at left  
omitted, stamp at right has double-headed eagle.

8. 1883. 2 kr. black and brown on buff.
9. 1883. 2 x 2 kr. black and brown on buff. T 3.

## AUSTRIA (ILLYRIAN PROVINCES).

CORRESPONDENZ-KARTE and KARTA-DOPISNICA in two arched lines over arms, type-set frame.

1. 1873. 2 kr. black on buff, ILLYR in lower right corner of card.  
A. Yellow stamp.  
B. Orange stamp.

CORRESPONDENZ-KARTE and KARTA-DOPISNICA in two straight lines in centre, arms at left, stamp, with head of Emperor, at right.

2. 1876. 2 kr. brown on dark buff card.
3. 1881. 2 x 2 kr. brown on dark buff card. T 3.

Inscription as above in two straight lines, stamp, with double-headed eagle, at right.

4. 1883. 2 kr. black and brown on buff.
5. 1883. 2 x 2 kr. black and brown on buff. T 3.

## AUSTRIA (ITALIAN PROVINCES).

CORRESPONDENZ-KARTE and CARTA DA CORRISPONDENZA in two arched lines over arms, type-set frame.

1. 1871. 2 kr. black on buff, on reverse the date is towards the left side.  
A. Yellow stamp.  
B. Orange stamp.
2. 1872. 2 kr. black on buff, on reverse the date is towards the right side.  
A. Yellow stamp.  
B. Orange stamp.
3. 1872. 2 kr. black on buff, no date on the reverse.  
A. Yellow stamp.  
B. Orange stamp.
4. 1873. 2 kr. black on buff, ITAL in lower right corner of card.  
A. Yellow stamp, ITAL in parenthesis.  
B. Orange stamp, ITAL not in parenthesis.  
C. Orange stamp, no parenthesis, color after ITAL.

CORRESPONDENZ-KARTE and CARTA DI CORRISPONDENZA in two straight lines in centre, arms at left, stamp has head of Emperor.

5. 1876. 2 kr. brown on dark buff card.
6. 1881. 2 x 2 kr. brown on dark buff card. T 3.

Inscription as above in two straight lines, stamp, with double-headed, eagle at right.

7. 1883. 2 kr. black and brown on buff.
8. 1883. 2 x 2 kr. black and brown on buff. T 3.

### AUSTRIA (POLISH PROVINCES).

CORRESPONDENZ-KARTE and KARTA KORESPONDENCYJNA in two arched lines over arms, type-set frame.

1. 1871. 2 kr. black on buff, on reverse the date is toward the left side.
  - A. Yellow stamp.
  - B. Orange stamp.
2. 1872. 2 kr. black on buff, on reverse the date is towards the right side.
  - A. Yellow stamp.
  - B. Orange stamp.
3. 1872. 2 kr. black on buff, no date on the reverse.
  - A. Yellow stamp.
  - B. Orange stamp.
4. 1873. 2 kr. black on buff, POLN in lower right corner of card.
  - A. Yellow stamp.
  - B. Orange stamp.
  - C. Orange stamp, period after POLN above the line.
  - D. Orange stamp, no parenthesis before POLN.
  - E. Orange stamp, no period after POLN.

CORRESPONDENZ-KARTE and KARTA KORESPONDENCYJNA in two straight lines in centre, arms at left, stamp has head of Emperor.

5. 1876. 2 kr. brown on dark buff cards.
  - A. AN at left of first dotted line.
  - B. AN omitted.
6. 1881. 2 x 2 kr. brown on dark buff card. T 3 like 5 B.

Inscription as above in two straight lines, stamp, with double-headed eagle, at right.

7. 1883. 2 kr. black and brown on buff.
8. 1883. 2 x 2 kr. black and brown on buff. T 3.

### AUSTRIA (ROUMANIAN PROVINCES).

CORRESPONDENZ-KARTE and CARTE POSTALA in two straight lines in centre, arms at left, stamp, with head of Emperor, at right.

1. 1881. 2 kr. brown on dark buff card.

2. 1882. 2 x 2 kr. brown on dark buff card. T 3.

Inscription as above in two straight lines, stamp has double-headed eagle.

3. 1883. 2 kr. black and brown on buff.  
4. 1883. 2 x 2 kr. black and brown on buff. T 3.

### AUSTRIA (RUTHENIAN PROVINCES).

CORRESPONDENZ-KARTE and two Russian words in two arched lines over arms, type-set frame.

1. 1871. 2 kr. black on buff, on reverse the date is towards the left side.  
A. Yellow stamp.  
B. Orange stamp.  
2. 1872. 2 kr. black on buff, no date on the reverse.  
A. Yellow stamp.  
B. Orange stamp.  
3. 1873. 2 kr. black on buff, RUTH in lower right corner of card.  
A. Yellow stamp.  
B. Orange stamp.

CORRESPONDENZ-KARTE and two Russian words in two straight lines in centre, arms at left, stamp, with head of Emperor, at right.

4. 1876. 2 kr. brown on dark buff card.  
5. 1881. 2 x 2 kr. brown on dark buff card. T 3.

Inscription as above in two straight lines, stamp has double-headed eagle.

6. 1883. 2 kr. brown and black on buff.  
7. 1883. 2 x 2 kr. brown and black on buff. T 3.

### AUSTRIA (SLOVENIAN PROVINCES).

CORRESPONDENZ-KARTE and LISTNICA in two arched lines over arms, type-set frame.

1. 1871. 2 kr. black on buff, on reverse the date is towards the left side.  
A. Yellow stamp.  
B. Orange stamp.  
2. 1872. 2 kr. black on buff, on reverse the date is towards the right side.  
A. Yellow stamp.  
B. Orange stamp.

3. 1872. 2 kr. black on buff, no date on the reverse.
    - A. Yellow stamp.
    - B. Orange stamp.
  4. 1873. 2 kr. black on buff, SLOV in lower right corner of card.
    - A. Yellow stamp.
    - B. Orange stamp.
- 

CORRESPONDENZ-KARTE and DOPISNICA in two straight lines in centre, arms at left, stamp, with head of Emperor, at right.

5. 1876. 2 kr. brown on dark buff card.
  6. 1881. 2 x 2 kr. brown on dark buff card. T 3.
- 

Inscription as in Nos. 5 and 6 on two straight lines in centre, stamp has double-headed eagle.

7. 1883. 2 kr. black and brown on buff.
8. 1883. 2 x 2 kr. black and brown on buff. T 3.

### AUSTRIA (FOREIGN OFFICES).

CARTA DA CORRISPONDENZA in arched line over arms, INDIRIZZO at left of first dotted line, type-set frame.

1. 1873. 3 soldi rose
  2. 1875. 5 soldi red.
- 

WELTPOST-VEREIN, &c., at top, arms at left, stamp, with head of Emperor, at right.

3. 1880. 5 soldi red on buff.
    - A. With star in lower right corner.
    - B. Without star.
  4. 1880. 5 x 5 soldi red on buff. T 3.
    - A. Same as 3 A.
    - B. Same as 3 B.
- 

Same as Nos. 3 and 4, but stamp has double-headed eagle.

5. 1883. 5 soldi red on buff.
  6. 1883. 5 x 5 soldi red on buff.
    - A. x after POSTALE) on reply card.
    - B. No x after POSTALE) on reply card.
- 

Cards of Austria proper surcharged in PARAS.

7. 1888. 20 paras on 5 kr., No. 11 red on buff.
  - A. Same as 11 A.
  - B. Same as 11 C.

8. 1888. 20 x 20 paras on 5 x 5 kr., No. 12 red on buff. T 3.  
 A. Same as 12 A.  
 B. Same as 12 B.

### AUSTRIA.—LETTER CARDS.

Stamp in upper right corner, with double-headed eagle.

1. 1886. 3 kr. green and black on green, for the provinces as below :
- A. KARTEN-BRIEF in centre for Austria.
  - B. KARTEN BRIEF, ZALEPKA in centre, BOHM in lower right corner for Bohemian Provinces.
  - C. KARTEN-BRIEF, BIGLIETTO POSTALE, KARTA-LISTOVNICA in centre, ITAL-ILLYR in corner for Italian and Illyrian Provinces.
  - D. KARTEN-BRIEF, BIGLIETTO POSTALE in centre, ITAL in corner for the Italian Provinces.
  - E. KARTEN-BRIEF, LIST KARTKOWY and two Russian words in centre, POLN-RUTH in corner for Polish and Ruthenian Provinces.
  - F. KARTEN-BRIEF, CARTE POSTALA INCHISA in centre, RUM in corner for the Roumanian Provinces.
  - G. KARTEN-BRIEF, ZALEPKA in centre, SLOV in corner for the Slovenian Provinces.
2. 1886. 5 kr. rose and black on gray, for the Provinces as below :
- A. Same as 1 A.
  - B. Same as 1 B.
  - C. Same as 1 C.
  - D. Same as 1 D.
  - E. Same as 1 E.
  - F. Same as 1 F.
  - G. Same as 1 G.

---

KARTEN-BRIEF, CARTOLINA-LETTERA, CARTE LETTRE in centre, stamp, double-headed eagle, ITAL FRANZ, in corner.

3. 1887. 10 soldi blue and black on gray.  
 4. 1888. 1 piaster surcharged over 10 soldi in black.

### AUSTRIA.—PNEUMATIC CARDS.

CORRESPONDENZ-KARTE at top in centre, stamp head of Emperor, arms at left, AUFGABE-STATIONEN under arms.

1. 1879. 10 kr. blue on blue card, DIE ZUSTELLUNG, &c., in lower left corner.
    - A. BEZIRK on third dotted line.
    - B. BEZIRK on fourth dotted line.
- 

Similar to 1 A, but DIE ZUSTELLUNG, &c., omitted.

2. 1880. 10 kr. blue on blue.
  3. 1880. 10 x 10 kr. blue on blue. L. 3.
- 

Similar to last, but AUFGABE AEMTER at left under arms.

4. 1882. 10 kr. blue on blue.
    - A. SCHONBRUNNER STRASSE 22 in lower left corner.
    - B. SCHONBRUNNER STRASSE 42 in lower left corner.
  5. 1882. 10 x 10 kr. blue on blue. L. 3.
- 

Similar to last, but AMTER FUR, &c., at left under arms.

6. 1883. 10 kr. blue on blue, arms in upper left corner smaller.
- 

Similar, no arms at left, stamp has a double-headed eagle.

7. 1883. 10 kr. blue on blue, 30 stations in column at left.
8. 1884. 10 kr. blue on blue, 31 stations in column at left.
9. 1884. 10 x 10 kr. blue on blue. L. 3.
10. 1888. 10 kr. blue on blue, no stations at left.

## AUSTRIA.—PNEUMATIC LETTER CARD.

KARTEN-BRIEF, NUR PNEUMAT, &c., at top, stamp, with double-headed eagle.

1. 1887. 15 kr. gray on pink.

## BADEN.

BADISCHER POSTBEZIRK at top, buff cards.

CORRESPONDENZ-KARTE connected by hyphen of two strokes.

1. 1870. No value, black on buff, E of E 3 in lower right corner is under EI of PREISE.
  - A. In Par. 1, E of KARTE is over space between D and E of DES.
  - B. In Par. 1, E of KARTE is nearly over D of DES.
  - C. In Par. 1, E of KARTE is to left of D of DES.

2. 1870. No value, black on buff, E of E 3 is under 1 of PREISE.
  - A. In Par. 1, E of KARTE is to right of D of DES.
  - B. In Par. 1, E of KARTE over D of DES.
3. 1870. No value, black on buff, E of E 3 is under first E of PREISE.
4. 1870. No value, black on rose, same as No 3.

CORRESPONDENZ-KARTE has hyphen of one small stroke.

5. 1870. No value, black on buff card.

## BAVARIA.

BAYERN CORRESPONDENZ-KARTE at top in two lines.

1. 1870. No value, buff cards, no thick line under third dotted line.
  - A. The eleventh word in Par. 5 is ZNR instead of ZUR, no period after FREIMARKE in rectangle.
  - B. Period after head-line of instructions is over space after BLEISTIFT. In Par. 4, last N of GANZEN is over N of WERDEN.
  - C. Same as B, but in Par. 4 last N of GANZEN is to the left of N of WERDEN.
2. 1870. No value, buff cards, with thick line under third dotted line.
  - A. In Par. 5, ZNR instead of ZUR.
  - B. In Par. 4, GESCHRIEBEU instead of GESCHRIEBEN, period after FREIMARKE in rectangle.
  - C. Same as B, but no period after FREIMARKE in rectangle.
  - D. Line dividing instructions starts between R and A of GEBRAUCH.
  - E. Line dividing instruction starts between A and U.—  
In Par. 1, line 5, P of PARTIEN is smaller than the P of POSTANSTALTEN in line below.
  - F. Line dividing instructions starts between A and U.  
The P's of POST in Par. 2, and of POSTBEFORDERUNG in Par. 4, are smaller than the capital P's in Par. 1.
  - G. The P's of POST in Par. 2, and of POSTGEBIETE in Par. 6, are small, the others are large.
  - H. The P of POSTGEBIETE in Par. 6 is small, all the others large.



J. The P's of POSTANSTALTEN in Par. 1, and in POST-BEFORDERUNG in Par. 4, are small, all the others are large.

K. All the capital P's are large in all the paragraphs.

---

KONIGREICH (arms) BAYERN at top, under which is CORRESPONDENZ-KARTE.

3. 1872. No value, green card, reply. T 3.

A. In Par. 3, line 6, VERKEHR without final E.

B. In Par. 3, line 6, VERKEHRE with final E. Comma after DEUTSCHLANDS in line 6 of Par. 3.

C. VERKEHRE as in B. No comma after DEUTSCHLANDS—diamond-shaped period after BEZAHLT in inscription.

D. Same as C, but round period after BEZAHLT.

---

KONIGREICH (arms in shield) BAYERN at top. POSTKARTE in Gothic letters under arms, 4 paras. of instruction at foot.

4. 1873. No value, buff cards.

A. Third line of Par. 1 begins WERTHES.

B. Third line of Par. 1 begins WERTHS. All large hyphens between POST-ABGABE-STEMPEL and POST-AUFGABE-STEMPEL.

C. WERTHS, all small hyphens between the words in B.

5. 1873. 2 kr. green on buff cards.

A. WERTHS, all large hyphens. In Par. 3, REKOMMANTION spelt with a K instead of a C.

B. WERTHS, all large hyphens. In Par. 4, MST instead of MIT.

C. WERTHS, all small hyphens. In Par. 1, line 3, SIUD instead of SIND.

D. WERTHS, all large hyphens. In Par. 4, M of AUSNAHME small and R of RUSSLANDS large.

E. WERTHS, small hyphen between POST and ABGABE, all other hyphens large, M of AUSNAHME and R of RUSSLANDS large.

F. WERTHS, all small hyphens, M of AUSNAHME and R of RUSSLANDS large. In Par. 1, D of DES a little to the right of D of SIND, blue-green stamp.

G. Same as F, but with a yellow-green stamp.

H. WERTHS, all small hyphens, M of AUSNAHME large, R of RUSSLANDS small. In Par. 1, D of DES is over N of SIND.

- J. WERTHS, all large hyphens, M of AUSNAHME and R of RUSSLANDS large. In Par. 1, D of DES a little to the right of D of SIND.
- K. Same as J, but in Par. 1, D of DES is between N and D of SIND.
- L. Same as J, but in Par. 1, D of DES is a little to the left of N of SIND.
- M. WERTHES, all large hyphens. Thin dotted lines for address. Periods at end of all the paragraphs.
- N. Similar to M, but thick dotted lines. No period at end of Par. 3.
- O. Same as N, but no period after Par. 4. No period after ZULASSIG in Par. 3, or after VERABFOLGT in Par. 1.
6. 1874. 1 kr. green on buff cards, like No. 5.
- A. WERTHES. Periods at end of all paras., buff card.
- B. Same as A, but on brownish buff card.
- C. Same as A, but lower part of P of POST in upper left corner missing.
- D. Same as A, but no period at end of Par. 1.
- E. Same as A, but no period at end of Par. 3.
- F. WERTHS.

---

Similar to last, but dotted rectangle in upper right corner.

7. 1874. No value, black inscription on buff cards.
- A. Instructions begin MIT FREIMARKEN, all large hyphens. In Par. 4, MIT. In Par. 2, line 3, D of DER is nearly under M of MIT.
- B. Same as A, but in Par. 2, D of DER is under T of MIT.
- C. Same as A, but MST in Par. 4 instead of MIT, and in Par. 2, D of DER is under I of MIT.
- D. Same as A, but all small hyphens. In Par. 2, D of DER is under I of MIT.
- E. Instructions begin MIT BRIEFMARKEN. In Par. 3, REKOMMENDATION spelt with a K.

---

KONIGREICH (arms in shield) BAYERN at top—POSTKARTE in Gothic letters under arms, no instructions at foot.

8. 1874. 2 x 2 kr. green on dark gray cards. T 3.
- A. Small hyphens on original card, large on reply.
- B. Large hyphens on original, small on reply; ruled

line under fifth dotted line begins to right of IN; round period after BEZAHLT on original card, diamond-shaped period on reply.

C. Large hyphens on original, small on reply; ruled line begins under N; diamond-shaped periods on both cards.

D. Same as C, but space between G and A of AUFGABE on original.

E. Large hyphens on both cards—NUCKANTWORT on reply card.

---

Similar, but POSTKARTE in Roman letters, no instructions at foot.

9. 1875. 1 kr. green on buff.

A. KONIGREICH with two periods over the O—dots in lines for the address are all uniform.

B. KONIGREICH as in A. The first 52 mm. of first dotted line the dots are very close together.

C. With circumflex accent over O of KONIGREICH.

10. 1875. 2 kr. green on buff.

A. KONIGREICH as in 9 A, top line is 73 mm. long dots all uniform.

B. Same as A, but top line 74½ mm. long.

C. Same as A, but top line 75 mm. long.

D. KONIGREICH as in 9 A, top line 74 mm. long. The first 52 mm. of the fourth dotted line the dots are close together.

E. KONIGREICH as in 9 C, top line 74½ mm. dots are all uniform, IN is 4 mm. to left of third dotted line.

11. 1876. 3 Pfg. green on buff.

A. BAYERN 26 mm. long, KONIGREICH with two periods over the O—IN below level of third dotted line.

B. BAYERN 26½ mm. long, KONIGREICH as in A, IN on level with third dotted line, dots all uniform.

C. BAYERN 26 mm. long, KONIGREICH as in A, IN on level with third dotted line.

D. Same as B, but dots in the first and second lines, and the first thirteen dots in the third line, are closer together than the other dots are.

E. BAYERN 27 mm. long, KONIGREICH as in A.

F. The O of KONIGREICH has circumflex accent over it.

12. 1876. 5 Pfg. green on buff, numerals in lower corners of stamp only.

- A. BAYERN 26 mm. long, KONIGREICH as in 11 A, lower point of arms between K and A of POSTKARTE.
  - B. BAYERN 26½ mm. KONIGREICH as in 11 A. Lower point of arms over right part of K.
  - C. Same as B, but IN is below the level of the third dotted line.
  - D. BAYERN 26½ mm. KONIGREICH as in 11 A. K of POSTKARTE small, only 4 mm. wide.
  - E. BAYERN 27 mm. KONIGREICH as in 11 A. The dots in the last 17 mm. of the second dotted line are very close together.
  - F. Same as 11 F.
13. 1876. 5 Pfg. green on buff, numerals in all four corners of stamp.
- A. Dots all uniform.
  - B. The dots in the first 52 mm. of the fourth dotted line are very close together.
  - C. The first 13 dots of third line are close together.
14. 1876. No value, buff cards, arms in shield.
- A. BAYERN, 27 mm., dots all uniform.
  - B. BAYERN, 26 mm., dots all uniform.
  - C. BAYERN, 26½ mm. Twenty-six dots in centre of first line are close together.
  - D. BAYERN, 24 mm. FREIMARKE in upper right corner. P of POSTKARTE in heavier type than other letters.
- Same as No. 8.
15. 1876. 3 x 3 Pfg. green on dark gray cards. T 3.
- A. Large hyphens on both cards, round periods on both cards at end of third line of inscription, ruled line begins to right of IN on both cards.
  - B. Same as A, but NUCKANTWORT on reply card.
  - C. Small hyphens on original, large on reply; diamond-shaped period on original, round on reply; ruled line begins to right of IN.
  - D. Large hyphens on original, small on reply; round period on original, diamond-shaped on reply; ruled line begins to right of IN.
  - E. Hyphens as in D; diamond periods on both cards; ruled line begins under N on original.
16. 1876. 5 x 5 Pfg. green on dark gray cards. T 3.
- A. Same as 15 A.

- B. Same as 15 B.
- C. Same as 15 C.
- D. Same as 15 D.
- E. Same as 15 E.

---

Similar to No. 16, but POSTKARTE in Roman letters, no ruled line, words connected by hyphens omitted.

17. 1877. 5 x 5 Pfg. green on dark gray. T 3. Arms in shield.

- A. Round period on original, diamond-shaped period on reply; parenthesis thickly marked on both cards.
- B. Round periods on both cards; parenthesis thickly marked on both cards.
- C. Diamond period on original, round on reply; parenthesis thickly marked.
- D. Large round period on original, large diamond-shaped period on reply.
- E. Diamond-shaped periods on both cards.

---

Same as last, but without stamps.

18. 1878. No value, black on dark gray. T 3. Arms in shield.

- A. Diamond-shaped periods on both cards.
- B. Round period on original, diamond on reply.
- C. Diamond on original, round period on reply.

---

Same as No. 9, with arms in shield.

19. 1878. 5 Pfg. lilac on buff.

- A. IN slightly below level of third dotted line.
- B. IN on level with third dotted line, lower point of arms over right stroke of K in POSTKARTE.
- C. Same as B, but arms a little to left of K.

---

Same as No. 17, arms in shield.

20. 1878. 5 x 5 Pfg. lilac on dark gray. T 3.

- A. Diamond periods on both cards, IN on level with third dotted line.
- B. Round period on original, diamond on reply, IN below level of line.

---

Same as No. 20, but ANTWORT instead of RUCKANTWORT.

21. 1879. 5 x 5 Pfg. lilac on dark gray card. T 3. Diamond periods on both cards, IN above line on both cards.

KONIGREICH (arms in oval) BAYERN at top.

22. 1880. No value, buff cards.
  - A. Lower point of arms over centre of K.
  - B. Lower point of arms over right stroke of K.
23. 1880. No value dark gray cards. T 3. Arms in oval.
  - A. Large round periods on both cards.
  - B. Diamond periods on both cards.
  - C. Small diamond period on original, large round period on reply.
24. 1880. 5 Pfg. lilac on buff. Arms in oval.
  - A. KONIGREICH BAYERN 74 mm. long, lower point of arms over right stroke of K.
  - B. KONIG, &c., 75 mm., arms over centre of K.
  - C. KONIG, &c., 75 mm., arms over right stroke of K.
  - D. KONIG, &c., 75½ mm., arms over centre of K.
  - E. KONIG, &c., 75½ mm., arms over right stroke of K.
25. 1880. 5 x 5 Pfg. lilac on dark gray cards. T 3. Arms in oval.
  - A. Large round period on both cards.
  - B. Large diamond periods on both cards, arms over left stroke of K on original, and over right stroke on reply.
  - C. Large diamond periods on both cards, arms nearly over the centre of K on both cards.
  - D. Small round period on original, diamond on reply.
  - E. Small diamond period on original, large round period on reply.
26. 1881. 3 Pfg. green on buff cards. Arms in oval.
  - A. KONIG, &c., 75 mm., IN thick lettering and on level with line.
  - B. KONIG, &c., 75 mm., IN thin and on level with line.
  - C. KONIG, &c., 75½ mm., IN thick and below level of line.
27. 1882. 3 x 3 Pfg. green on dark gray cards. T 3. Arms in oval.
  - A. Round period on original, diamond on reply.
  - B. Large diamond periods on both cards, arms over centre of K on both cards.
  - C. Same as B, but arms over left stroke of K on original and over right stroke of K on reply.
  - D. Small diamond period on original, round on reply.
  - E. Round periods on both cards.

View of Exposition building at Nurnberg.

28. 1882. 5 Pfg. lilac (shades) on buff cards.

A. Pale lilac stamp.

B. Bright lilac stamp.

WELTPOSTVERIN, &c., at top.

29. 1879. 10 Pfg. carmine on buff unwatermarked cards.

A. Circular periods after WELTPOSTVEREIN-UNIVERSELLE and BAVIERE.

B. Diamond periods after above words.

C. Circular periods after WELTPOSTVEREIN-BAVIERE, diamond after UNIVERSELLE. Second line at top is 84½ mm. long.

D. Same as C, but second line at top is 87 mm. long.

E. Circular periods after UNIVERSELLE-BAVIERE, diamond after WELTPOSTVEREIN.

F. Circular periods after WELTPOSTVEREIN-UNIVERSELLE, diamond after BAVIERE.

30. 1879. 10 x 10 Pfg. carmine on buff unwatermarked cards. T 3.

A. Circular periods after above words on both cards.

B. Periods like 29 C. on original, 29 E. on reply card.

C. Periods like 29 A. on original, 29 F. on reply card.

31. 1883. No value black on buff unwatermarked single card, periods like 29 A.

32. 1883. No value black on buff unwatermarked double card. T 3. Periods like 30 A.

### — NOTE. —

From this year the cards are all watermarked, and they will be known as follows :

VC. Watermark of vertical waved lines close together.

VF. Watermark of vertical waved lines far apart.

HC. Watermark horizontal waved lines close together.

HF. Watermark horizontal waved lines far apart.

Card No. 29 A.

33. 1883. 10 Pfg. carmine, w'm'k VC.

34. 1884. 10 Pfg. carmine, w'm'k VF.

35. 1884. 10 Pfg. carmine, w'm'k HF.

KONIGREICH BAYERN at top, arms at left in oval, stamp has large numeral of value.

36. 1883. 3 Pfg. green on buff, w'm'k VC.

- A. POSTKARTE 39 mm. long, fourth dotted line 88 mm. long.
- B. POSTKARTE 39 mm. long, fourth dotted line 85 mm. long.
- C. POSTKARTE 36 mm. long, fourth dotted line 85 mm. long.
- 37. 1883. 3 Pfg. green on buff, w'm'k VC., two lines of instruction under POSTKARTE.
- 38. 1883. 5 Pfg. lilac on buff, w'm'k VC.
  - A. Same as 36 A.
  - B. Same as 36 B.
  - C. Same as 36 C.
- 39. 1883. No value, single yellowish glazed unwatermarked card.
  - A. POSTKARTE 39 mm., fourth dotted line 88 mm. long.
  - B. POSTKARTE 36½ mm., fourth dotted line 85 mm. long, the o of POSTKARTE is not under the curve of the P.
  - C. Same as B, but the o is partly under the P.
- 40. 1883. No value, double dark gray unwatermarked card. T 3.
- 41. 1884. 3 Pfg. green on buff, w'm'k VF. Same as 36 A.
- 42. 1884. 3 Pfg. green on buff, w'm'k VF. Two lines under POSTKARTE.
- 43. 1884. 5 Pfg. lilac on buff, w'm'k VF.
  - A. Same as 36 A.
  - B. POSTKARTE 37 mm., fourth dotted line 88 mm.
- 44. 1884. 3 x 3 Pfg. green on dark gray, T 3, w'm'k VF., two lines of instruction as in No. 37.
- 45. 1884. 3 x 3 Pfg. green on dark gray, T 3, w'm'k HC.
- 46. 1884. 5 x 5 Pfg. lilac on dark gray, T. 3, w'm'k HC.
- 47. 1884. 5 x 5 Pfg. lilac on dark gray, T 3, w'm'k VF.
- 48. 1884. 3 Pfg. green on buff, w'm'k HF.
- 49. 1884. 3 Pfg. green on buff, w'm'k HF, two lines under POSTKARTE, A in lower left corner.
  - A. Period after POSTKARTE is under E of BAYERN.
  - B. Period is under space between E and R of BAYERN.
- 50. 1884. 5 Pfg. lilac on buff, w'm'k HIF.
  - A. Period after POSTKARTE nearly under E of BAYERN.
  - B. Period is under R of BAYERN.

---

DEUTSCHLAND-ALLEMAGNE-BAYERN-BAVIERE at top in carmine, other inscription in black on buff cards.



51. 1886. 10 Pfg. carmine on buff.  
 A. With watermark of horizontal waved lines far apart.  
 B. With vertical waved lines far apart.
52. 1886. 10 x 10 Pfg. carmine on buff, T 3, w'm'k HV.

Cards of 1883 and 1884 issue with date date in lower corner, the last two figures of each year being given.

53. 1887. 3 Pfg. green on buff, w'm'k HF, two lines under POSTKARTE.
54. 1887. 3 Pfg. green on buff, w'm'k VF, two lines under POSTKARTE.
55. 1887. 5. Pfg. lilac on buff.  
 A. Watermark VF.  
 B. Watermark HF.
56. 1887. 10 Pfg. carmine on buff.  
 A. Watermark HF., period after ADRESSE at left.  
 B. Watermark HF., no period after ADRESSE at left.  
 C. Watermark VF.
57. 1887. 3 x 3 Pfg. green on dark gray. T. 3. W'm'k VF, same as 44.
58. 1887. 5 x 5 Pfg. lilac on dark gray. T 3. W'm'k VF.  
 A. First T of POSTKARTE is over right stroke of w.  
 B. T is over space between w and o.
59. 1887. 10 x 10 Pfg. carmine on buff. T 3.  
 A. Watermark HF.  
 B. Watermark VF.

Same as above dated 88, arms at left in oval.

60. 1888. 3 Pfg. green on buff, two lines under POSTKARTE.  
 A. Watermark VF.  
 B. Watermark HF.
61. 1888. 5 Pfg. lilac on buff.  
 A. Watermark VF.  
 B. Watermark HF.
62. 1888. 10 Pfg. carmine on buff, w'k'm HF.
63. 1888. 5 x 5 Pfg. lilac on dark gray, w'm'k VF.
64. 1888. 10 x 10 Pfg. carmine on buff, T 3, w'm'k HF.

Same as above, dated 88, but arms at left are in an escutcheon instead of in an oval.

65. 1888. No value, black on buff card.
66. 1888. 3 Pfg. green on buff, w'm'k HF, two lines under POSTKARTE.

67. 1888. 5 Pfg. lilac on buff, w'm'k HF.  
 68. 1888. 5 x 5 Pfg. lilac on dark gray, w'm'k VF. Folded T 3.

---

Arms in escutcheon dated 89.

69. 1889. 3 Pfg. green on buff, w'm'k HF., two lines under  
 POSTKARTE.  
 70. 1889. 5 Pfg. lilac on buff, w'm'k HF.  
 71. 1889. 5 x 5 Pfg. lilac on dark gray, T 3, w'm'k VF.  
 72. 1889. 10 Pfg. carmine on buff, w'm'k HF.

## BELGIUM.

Allegorical figures, with arms in centre of card, stamp at right.

1. 1871. 5 c. brown on buff, with three lines of instruction at each side.
2. 1872. 5 c. brown on buff, with instructions at sides cut off.
3. 1872. 5 c. brown on buff, printed without instructions at sides.

---

CARTE CORRESPONDANCE at top, stamp with numeral in centre, with frame.

4. 1873. 5 c. lilac on buff.
5. 1873. 5 x 5 c. lilac on buff. T 4. ANTWORDT under arms.
6. 1873. 5 x 5 c. lilac on buff. T 4. T of ANTWORDT scratched out.
7. 1875. 5 c. lilac on buff. Two lines of inscription under arms.
8. 1877. 5 x 5 c. lilac on buff. T 4. ANTWORD under arms.

---

Same as No. 7, but stamp has head of Emperor.

9. 1875. 10 c. black on blue card.
10. 1875. 10 c. green on blue card.

---

Same as no 7, but without frame; stamp has numeral in centre.

11. 1877. 5 c. lilac.
  - A. Second ruled line 95 mm. long on buff card.
  - B. Second ruled line 102 mm. long on buff card.
  - C. Same as B, but on tinted buff card.
12. 1878. 5 x 5 c. lilac on buff. T 3.

Same as No. 10, but without frame.

13. 1878. 10 c. green on blue card.

---

Four lines of inscription at top. Third line reads CARTE POSTALE, fourth line reads CE COTE, &c. No frame, stamp head of Emperor.

14. 1879. 10 c. carmine on blue (shades) card.  
 A. On pale blue card.  
 B. On blue card.  
 C. On dark blue card.

15. 1879. 10 x 10 c. carmine on blue. T 3.

---

Two lines of inscription at top. First line reads CARTE POSTALE, second line reads CE COTE, &c. No frame, stamp has numeral in centre.

16. 1879. 5 c. green on buff.  
 17. 1880. 5 x 5 c. green on buff. T 3.

---

Same as No. 16, but second line is POSTKAART.

18. 1884. 5 c. green on buff.

---

Same as No. 14, but fourth line is POSTKAART.

19. 1885. 10 c. carmine.  
 A. On light blue card.  
 B. On dark blue card.

---

Same as No. 16, with COTE RESERVE, &c., below POSTKAART.

20. 1887. 5 c. green on buff.  
 21. 1888. 5 x 5 c. green on buff. T 3.

---

CARTE POSTALE—AVEC REPONSE PAYEE in one line at top—four lines of inscription below.

22. 1888. 10 x 10 c. carmine on blue. T 3.

---

CARTE POSTALE-POSTKAART in one line at top, three lines of inscription below.

23. 1888. 10 c. carmine on blue.

### BELGIUM.—LETTER CARDS.

CARTE-LETTRE-KAARTBRIEF in two lines at top, stamp has BELGIQUE at top and numerals at sides.

1. 1882. 10 c. carmine.
  - A. On deep blue card.
  - B. On light blue card.

CARTE-LETTRE-POUR L'ETRANGER in one line at top, stamp has BELGIQUE at bottom and numerals at sides.

2. 1882. 25 c. blue on rose.
  - A. Perforations extend to top, bottom and sides.
  - B. Same as A, but the horizontal perforation at top and bottom extends only to the right side perforation.
  - C. The horizontal perforation as in B stops 2 mm. to left of right vertical perforation.

Same as No. 24, but stamp has BELGIQUE-POSTES at top, numerals in upper corners.

3. 1886. 10 c. carmine.
  - A. On deep blue card.
  - B. On light blue card.

Same as No. 25, but stamp has numerals in upper corners.

4. 1886. 25 c. blue on rose.

Same as No. 24, but perforations do not extend to top or sides.

5. 1888. 10 c. carmine on gray blue card.
6. 1888. 10 c. carmine on pink.

### BELGIUM.—LETTER ENVELOPE.

ENVELOPE-LETTRE OMSLAGBRIEF in two lines at top.

1. 1888. 10 c. carmine on blue.

### BOSNIA.

DOPISNICA under CORRESPONDENZ-KARTE in centre, stamp has double-headed eagle in centre.

1. 1879. 2 n. brown.
2. 1880. 2 x 2 n. brown. T 3.
3. 1881. 2 n. brown, DOPISNICA omitted.

### BOSNIA LETTER CARDS.

1. 1886. 3 n. green on green—LOCAL-KARTEN-BRIEF.
2. 1886. 5 n. carmine on gray—KARTEN-BRIEF.

**BULGARIA.**

UNION POSTALE UNIVERSELLE—BULGARIE at top, two Russian words below in black, frame and stamp in color.

1. 1879. 10 CAH. carmine on buff card.

Similar to last, inscription in black, frame and stamp in color, inscription all in Russian.

2. 1881. 5 CTO. green on white card.
  - A. Line of instruction at foot is 92½ mm. long.
  - B. Line is 91 mm. long.

Inscription in black, stamp and frame in color.

3. 1884. 10 x 10 CTO. carmine on white card. T 3.

Inscription, frame and stamp all in color on white cards.

4. 1885. 5 x 5 CTO. green, T 3, top line of inscription ends KAPTA.
5. 1886. 5 CTO. green, top line of inscription ends NCMO.
6. 1887. 5 CTO. green, top line of inscription ends KAPTA.
7. 1889. 10 CTO. carmine on white.

Card No. 3.

8. 1889. 10 x 10 CTO. carmine on white, T 3. The original card is the same as the reply card.

**DENMARK.**

BREV-KORT in centre at top, arms at left, stamp at right, no lines for address, key pattern frame 135 x 69 mm.

1. 1871. 2 sk. blue on white.
  - A. Pale blue on rough white card.
  - B. Deep blue on smooth white card.
2. 1871. 4 sk. red.
  - A. Frame correct on buff card.
  - B. Frame correct on white card.
  - C. Third ornament in frame at top from right is like a corner ornament.
3. 1875. 4 ore blue on white.
  - A. BREV-KORT 40 mm. milky blue on rough card.
  - B. Same as A, but bright blue on smooth card.
  - C. BREV-KORT 42 mm. The sixteenth ornament in frame at top from left is like a corner ornament.

4. 1875. 6 ore. brown on white.
  - A. The two branches of the wreath, in the stamp, at the right are to the left of o of ORE, narrow thin 6 in centre of stamp, the small 6 in curve is curved over at top.
  - B. Branches as in A, narrow thin 6 in centre of stamp, the 6 in curve is open.
  - C. Branches as in A, thick stubby 6 in centre of stamp, the 6 in curve is open.
  - D. Branches as in A, thick medium 6 in centre of stamp, the 6 in curve is open.
  - E. Branches as in A, the first ornament in frame at bottom from the right is a corner ornament.
  - F. The upper branch referred to in A is over o of ORE, the 6 in centre of stamp is bulky, the 6 in curve is open.
  - G. Branches as in F, tall thin 6 in centre of stamp, the 6 in curve curved at top.
  - H. Branches as in F, thin 6 in centre of stamp nearly closed at top, the 6 in curve like as in G.
5. 1875. 8 ore red on white.
  - A. BREV-KORT 40 mm. long smooth card.
  - B. Same as A, but rough card.
  - C. BREV-KORT 42 mm. long, error in frame same as in 3 C, on rough card.
  - D. Same as C, but on smooth card.
  - E. Same as C, with narrow 8 in centre of stamp and the left hand upper corner ornament reversed.
  - F. Same as C, narrow 8 and the second ornament to left from bottom similar to a corner ornament.
6. 1875. 10 ore green on white.
  - A. BREV-KORT 40 mm.
  - B. BREV-KORT 42 mm., error in frame same in 3 C, small 10 in stamp.
  - C. Same as B, but large 10 in stamp.

---

Inscription as above, larger cards, frame 128 x 80 mm., 4 dotted lines for address.

7. 1879. 4 ore blue on white.
  - A. On smooth card.
  - B. On rough card.
8. 1879. 8 ore rose.
  - A. Bright rose on blue tinted card.
  - B. Dull rose on white card.

9. 1883. 4 x 4 ore blue on white. T 3.  
 10. 1883. 8 x 8 ore rose on white. T 3.

---

VERDENSPPOSTFORENINGEN in curve at top, third line reads  
 BREVKORT FRA DANMARK, arms at left, stamp at  
 right, key pattern frame.

11. 1879. 6 ore brown on buff.  
 A. BREVKORT FRA DANMARK 71½ mm. long, branches  
 of wreath same as in 4 A, small firm 6 in centre  
 of stamp, R of ORE narrow.  
 B. BREVKORT, &c., 71½ mm., branches same as in 4 F,  
 fat thin 6 in centre of stamp, R of ORE wide.  
 C. Same as B, but large thick 6 in centre of stamp.  
 D. BREVKORT, &c., 73½ mm. long, branches same as  
 in 4 F, thin 6 in centre of stamp.  
 E. Same as D, but medium 6 in centre of stamp.  
 F. Same as D, but large 6 in centre of stamp.  
 G. BREVKORT, &c., 73½ mm. long, branches same as  
 in 4 A, large 6 in centre of stamp.  
 H. Same as G, but thin 6 in centre of stamp.  
 J. Same as G, but medium 6 in centre of stamp.
12. 1879. 10 ore green on buff.  
 A. BREVKORT, &c., 71½ mm. long, large figures in  
 centre of stamp.  
 B. Same as A, but small figures in centre of stamp.  
 C. BREVKORT, &c., 73½ mm. long, large figures in  
 centre of stamp.  
 D. Same as C, but small figures in centre of stamp.
13. 1882. 10 ore carmine on buff, numerals at sides of stamp.  
 14. 1883. 6 x 6 ore brown on buff. T 3.  
 15. 1883. 10 x 10 ore red on buff. T 3.  
 16. 1885. 5 ore green on buff.  
 17. 1885. 5 x 5 ore green on buff. T 3.

---

Similar to No. 16, but fourth line is BREVKORT (CARTE  
 POSTALE).

18. 1887. 5 ore green on buff.  
 A. The fifth line of inscription is 78 mm. long.  
 B. The fifth line of inscription is 74 mm. long.
19. 1887. 10 ore red on buff.  
 A. Same as 18 A.  
 B. Same as 18 B.
-

Same as No. 7.

20. 1888. 3 ore gray on white.
21. 1888. 5 ore green on white.
  - A. Figures 5 in the four corners of stamp are  $1\frac{1}{2}$  mm. high.
  - B. Figures 5 in the four corners of stamp are 1 mm. high.
22. 1888. 3 x 3 ore gray on white. T 3.
23. 1888. 5 x 5 ore green on white. T 3.
  - A. On reply card (SVAR).
  - B. On reply card (SVAR. last bracket missing.

#### DENMARK.—LETTER CARDS.

KORRESPONDANCE-KORT in centre, arms at left, stamp at right.

1. 1888. 4 ore blue on buff, without inscription at foot.
  - A. Perforations do not extend to top, bottom or sides.
  - B. Perforations extend to top, bottom and sides.
2. 1888. 8 ore carmine on buff, without inscription at foot.
  - A. Same as 1 A.
  - B. Same as 1 B.
3. 1889. 8 ore carmine on buff, with inscription at foot, same as 2 B.
4. 1889. 4 ore blue on buff, with inscription at foot, same as 1 B.

#### DENMARK.—OFFICIAL CARDS.

TJENESTE BREVKORT at top, stamp at right, key pattern frame 135 x 69 mm.

1. 1871. 2 sk. blue on white.
2. 1871. 4 sk. red on white.
3. 1875. 4 ore blue on white.
  - A. Frame correct.
  - B. Two corner ornaments in upper left corner of frame.
4. 1875. 8 ore red on white.
  - A. Same as 3 A.
  - B. Same as 3 B.
  - C. Two corner ornaments in lower right corner of frame.

---

Same as above, but frame measure 128 x 80 mm.

5. 1885. 4 ore blue on white.
6. 1885. 8 ore red on white.
7. 1888. 3 ore gray on white.
8. 1888. 5 ore green on white.



## DENMARK.—LOCALS FOR COPENHAGEN.

KJOBENHAVNS in scrip letters at top, adhesive stamp attached. Frame 77 x 66 mm.

1. 1880. 10 x 10 ore black inscription on white cards. R 4.
  - A. With 10 ore black, gold and gray stamps.
  - B. With 10 ore blue and red stamps.
2. 1880. 10 ore similar to last, but frame 125x62 mm. and KJOBENHAVNS in capitals.
  - A. Same stamp as 1 A.
  - B. Same stamp as 1 B.

KJOBENHAVNS in capitals at top, frame of two lines 119 x 66 mm., inscription all around card outside of frame.

3. 1881. 3 ore yellow on white.

BREVKORT at top with scroll across, oval stamp, no frame.

4. 1881. 3 ore blue on white.

EXPRESKORT at top with scroll across, EXPRES over stamp.

5. 1881. 10 ore red on white.
  - A. Nothing in lower right corner.
  - B. 2 DET OPLAG in lower right corner.

BREVKORT at top with scroll across, rectangular stamp, no frame, inscriptions at sides of card.

6. 1884. 3 ore blue on white.
  - A. 1 STE OPLAG in lower left corner.
  - B. 2 DET OPLAG in lower left corner.
  - C. 3 DIE OPLAG in lower left corner.
  - D. 4 DE OPLAG in lower left corner.
  - E. 5 TE OPLAG in lower left corner.
  - F. 6 TE OPLAG in lower left corner.
  - G. 7 DE OPLAG in lower left corner.
  - H. 8 DE OPLAG in lower left corner.

We have seen cards like Nos. 6 E. and 6 F. with black impression on various colored cards, thick and thin, smooth and rough cards.

## LOCAL LETTER CARDS.

EXPRES BREVKORT in centre at top, stamp at right.

7. 1883. 10 ore blue on white.

8. 1884. 10 ore red on white.

---

Inscription similar to Card No. 6.

9. 1888. 3 ore brown on gray.

### **EASTERN ROUMELIA.**

OTBOPEHO, &c., at top in centre, circular blue hand stamp in upper right corner; three lines of Russian inscription and post-horns in upper left corner.

1. 1880. 10 pa. blue and black on thick white card.
  - A. Without FRANCO.
  - B. FRANCO surcharged in blue at top, in letters 5 mm. high.
  - C. FRANCO surcharged in blue at top in letters 6 mm. high.
2. 1880. 10 pa. blue and black on thin white card.
  - A. Same as 1 A.
  - B. Same as 1 B.
  - C. Same as 1 C.

---

Six lines of inscription in centre, third and fourth lines read ROUMELIE ORIENTALE—CARTE POSTALE. Rose border, inscription in green.

3. 1881. Rose and green on buff, the second line is 57½ mm. long.
  - A. With 5 pa. olive and black, adhesive stamp attached.
  - B. With 10 pa. green and black adhesive stamp attached.
  - C. With 20 pa. rose and black adhesive stamp attached.
  - D. Without stamp.
4. 1881. Rose and green on buff, reply cards., T 3, second line is 57½ mm. long.
  - A. With two 5 pa. stamps as in 3 A.
  - B. With two 10 pa. stamps as in 3 B.
  - C. With two 20 pa. stamps as in 3 C.
  - D. Without stamps.
5. 1881. Rose and green on buff, the second line is 54 mm. long.
  - A. Same as 3 A.
  - B. Same as 3 B.

- C. Same as 3 C.
- D. Same as 3 D.
- 6. 1881. Rose and green on buff, reply card, T 3, the second line is 54 mm. long.
  - A. Same as 4 A.
  - B. Same as 4 B.
  - C. Same as 4 C.
  - D. Same as 4 D.

## FINLAND.

KORRESPONDANSKORT in curve, key pattern frame, stamp in upper left corner.

- 1. 1871. 8 p. green. In Par. 1 ADRESSEN—In Par. 2 FORPLIKTAD.
  - A. On buff card, reverse buff.
  - B. On buff card, reverse greenish buff.
- 2. 1871. 8 p. green. In Par. 1 ADRESSEN—In Par. 2 FORPLIKTAD.
- 3. 1871. 8 p. green. In Par. 1 ADRESSEN—In Par. 2 FORPLIKTAD.
  - A. Dotted lines on reverse, pale buff card. In Par. 1 E of TECKNAS is over E of MEDDELANDENA.
  - B. Dotted lines, E of TECKNAS is to left of E, yellow brown card.
  - C. Same as B, but dark brown card.
  - D. Ruled lines on reverse, greenish glazed card, reverse bluish green.
  - E. Ruled lines, greenish glazed card, reverse creamy green.
  - F. Ruled lines, light greenish glazed card, reverse yellow green.
  - G. Ruled lines, buff card, reverse buff.
  - H. Ruled lines, glazed buff card, reverse bluish green.
  - J. Ruled lines, yellow green card, reverse yellowish green.
  - K. Ten horizontal and ten vertical lines on reverse.

---

KORRESPONDANSKORT FOR FINLAND in straight line at top, stamp at left.

- 4. 1872. 8 p. green.
  - A. On buff card.
  - B. On brownish buff card.

Card No. 4 with surcharge of three lines vertically under stamp.

5. 1872. 8 p. green on buff.
    - A. Third letter of last word of surcharge resembles an inverted N with period after last word.
    - B. Same as A, but period is 1 mm. from last word.
    - C. Same as A, but without period after last word.
    - D. Above letter like b1.
- 

KORRESPONDENSKORT FOR FINLAND in straight line at top, stamp at left.

6. 1873. 8 p. green, dot over I in last Russian word of inscription.
    - A. On buff card.
    - B. On salmon colored card.
  7. 1874. 8 p. green (shades), no dot over I as in No. 6.
    - A. Yellow green on salmon colored card.
    - B. Dark green on salmon colored card.
    - C. Pale green on salmon colored card.
    - D. Yellow green on buff card.
    - E. Dark green on buff card.
- 

Same as No. 7, with two 8 p. stamps in upper left corner.

8. 1875. 16 p. green on buff.
- 

BREFKORT (TILL ORT INOM FINLAND) at top, stamp in upper right corner, with value at top and bottom, frame as last.

9. 1875. 10 p. lilac.
  10. 1875. 10 x 10 p. lilac. L 3.
- 

Same as last, but stamp different, having numerals of value in all four corners.

11. 1875. 10 p. lilac (shades), second line of instruction begins TALLA.
  - A. Pale lilac on buff.
  - B. Bright lilac on buff.
12. 1875. 10 x 10 p. lilac (shades) on buff. L 3. Instructions same as No. 11.
  - A. Bright lilac stamp.
  - B. Gray lilac stamp.
13. 1875. 16 p. brown on white. Instructions same as No. 11.

14. 1875. 10 p. lilac on buff, second begins TALLE, two dots over the E.
15. 1875. 10 p. lilac on buff, TALLE and AINOASTANSA, no dots over the E.
  - A. Pale lilac stamp, lilac frame.
  - B. Bright lilac stamp and frame, space between L and E of TALLE.
  - C. Bluish gray stamp, lilac frame.
16. 1875. 16 p. brown on white. Instructions same as No. 15.
17. 1876. 10 p. various colors on buff cards, TALLE and AINOASTAAN.
  - A. Gray stamp, lilac frame.
  - B. Gray stamp, blue frame.
  - C. Bluish stamp, blue frame.
  - D. Bluish stamp, lilac frame.
18. 1876. 10 x 10 p. lilac stamp and frame. L 3. Instructions as in No. 17.
19. 1876. 16 p. brown white. Instructions as in No. 17.

---

Similar to 17, but KIRJEKORTTI longer than the two Russian words below.

20. 1877. 10 p. colors below, on buff cards.
  - A. Lilac stamp, lilac frame.
  - B. Gray stamp, lilac frame.

---

Same as 19, but BREFKORT, &c., in much thinner capitals.

21. 1877. 16 p. brown on white.
  - A. Period after TALLE.
  - B. No period after TALLE.

---

Similar to above, but POSTKORT, &c., at top.

22. 1878. 10 x 10 p. lilac. L 3. Frame 125 x 82 mm.
23. 1885. 10 x 10 p. lilac. L 3. Frame 127 x 81 mm.
24. 1885. 10 x 10 p. rose. L 3. Frame 127 x 81 mm.

---

VERLDSPSTFORENINGEN, &c., at top, frame same as last.

25. 1879. 10 p. orange on buff.
  - A. No errors in frame.
  - B. Corner ornament in frame at top about 19 mm. from the left corner.

---

UNION POSTALE UNIVERSELLE in frame at top, under which is FINLANDE (CARTE POSTALE).

26. 1881. 10 p. orange on buff, N of UNION over C of CARTE.  
A. Period after NIMI.  
B. Colon after NIMI.
27. 1883. 10 p. orange on buff, N of UNION is over space between C and A of CARTE.
28. 1885. 10 p. rose on buff, same as No. 27.

No frame, inscription at top in two columns.

29. 1886. 10 x 10 p. rose on buff. T 3.
30. 1888. 10 p. rose on white.
31. 1889. 10 x 10 p. rose on white. T 3. Map of Finland in upper left corner of the reply card.

### FINLAND (HELSINGFORS).

KORRESPONDENSKORT at top in straight line, stamp at left, folded card with gummed flap.

1. 1874. 10 p. green on thick white card. KORRESPONDENSKORT 71½ mm. long.
2. 1874. 10 p. green on white card. KORRESPONDENSKORT 70 mm. long.  
A. Thin card, period after HELSINGFORS at foot.  
B. Thick card, no period after HELSINGFORS.  
C. Thick card, accent over F of HELSINGFORS.
3. 1874. 10 p. green on thin white card. KORRESPONDENSKORT 71 mm. long.
4. 1874. 10 p. green on thin white card. S. P. H. embossed in monogram in upper right corner.  
A. Period after NO.  
B. No period after NO.
5. 1875. 10 p. green on thin white cards. KORRESPONDENSKORT 72 mm. long, period after NO. NO in large type.  
A. Period after NO is close up to the two dashes under o.  
B. Period after NO is not close up to the two dashes.
6. 1875. 10 p. green on thin white cards. KORRESPONDENSKORT 68 mm. long.  
A. Period after NO.  
B. No period after NO.

## FRANCE.

## PRIVATE ISSUE.

REPUBLIQUE FRANCAISE at top, with date below.

1. 1870. No value, black on white. LOI DU 20 DECEMBRE 1870.
  2. 1872. No value, black on white. LOI DU 20 DECEMBRE 1872
- 

CARTE POSTALE at top, five lines of inscription below, frame with Turkish half moons in corners, space for one stamp.

3. 1872. No value, black on white card.
- 

CARTE POSTALE at top in fancy letters, the initial letters being larger than the others, fancy ornaments above and below the four lines of inscription, fancy frame  $4\frac{1}{2}$  mm. wide, E PICHOT IMP<sup>R</sup>—DEPOSE A PARIS under frame at bottom.

4. 1872. No value, various colors on white card.
    - A. Black on white.
    - B. Blue on white.
    - C. Brown on white.
- 

CARTE POSTALE in capitals at top, four lines of instruction below, frame of T shaped ornaments, every other one being inverted.

5. 1872. No value, carmine on white.
- 

CARTE POSTALE in capitals at top, four lines of instruction below, frame of wavy lines, like waves between two parallel lines, outer line very thick.

6. 1872. No value, black on white.
- 

CARTE POSTALE in capitals ( $4\frac{1}{2}$  mm. high) at top, space for two stamps at right, type-set frame, 28 ornaments at sides, the two centre ornaments at each side, top and bottom of frame different from the others, outer line of frame only.

7. 1881. No value, black on white.

## FRANCE.

*GOVERNMENT ISSUES.*

CARTE POSTALE at top, below is four lines of inscription, type-set card, frame of type-set ornaments with interior ruled line only.

1. 1873. No value, black on white, space for two stamps inscribed.
    - A. S of DANS in third line is over I.
    - B. S of DANS is over space between I and R.
  2. 1873. No value, black on white, space for two stamps not inscribed.
- 

CARTE POSTALE at top, below is three lines of inscription, type-set cards, frame with ornaments between two parallel lines, stars in corners.

3. 1873. No value, black on white cards.
    - A. Space for one stamp inscribed.
    - B. Space for one stamp not inscribed.
  4. 1873. No value, black on blue tinted cards.
    - A. Same as 3 A.
    - B. Same as 3 B.
- 

Inscription same as No. 2, frame type-set ornaments with exterior ruled line, diamond-shaped ornaments in corners.

5. 1873. No value, black on white, space for two stamps not inscribed.
- 

Inscription same as No. 3, frame type-set ornaments with exterior ruled line, 14 ornaments at sides.

6. 1873. No value, black on white, space for one stamp not inscribed.
- 

Inscription and frame as in No. 1, but PRIX 10 CENTIMES above date, rectangle for one stamp not inscribed. Inscription in lower right corner in three lines reading upwards.

7. 1873. No value, black on light brown cards.
  - A. Period after CENTIMES is over 1 of 1872, light brown card.
  - B. Same as A, but dark brown card.
  - C. Period after CENTIMES is to left of 1 of 1872.



- D. Same as A, but no period after MAISON at right.
  - E. Same as A, but D in upper left and 5 in upper right corners of frame.
  - F. Same as C, but D and 5 in upper corners of frame.
  - G. F in upper left, 5 in upper right corners of frame, period after 1872.
  - H. Same as G, but no period after 1872.
  - J. 10-75 in lower left corner inside frame, period after 1872.
  - K. Same as J, but no period after 1872.
  - L. 7-75 in lower left corner inside frame.
- 

Inscription and frame same as No. 3, with PRIX 10 CENTIMES above date, rectangle for one stamp not inscribed.

- 8. 1873. No value, black on white card.
    - A. Period after CENTIMES is over 1 of 1872.
    - B. Period after CENTIMES is over space between 1 and 8.
    - C. Period after CENTIMES is a little to the right of 1, smooth card.
    - D. Card 8 A, with revenue hand-stamp in upper left corner in blue.
- 

- 9. 1873. No value, black on tinted cards.
    - A. Blue tinted card. Period after CENTIMES is between 1 and 8.
    - B. Rose tinted card. Period is over 1.
    - C. Rose tinted card, 7-75 in lower left corner.
    - D. Rose tinted card, 10-75 in lower left corner.
- 

Inscription as in No. 7, dotted lines for address, rectangle, for two stamps not inscribed. Frame, a bar encircled by a rope, ornamental corners.

- 10. 1873. No value, black on brown.
- 

Inscription as in No. 7, dotted lines for address, rectangle for one stamp not inscribed. Frame nearly like No. 10, instructions at left and in lower right corner omitted.

- 11. 1873. No value black on brown.
-

Inscription same as No. 8. Frame similar to No. 10, rectangle for one stamp.

12. 1873. No value, black on white.

A. Instructions at left read up, at right (6 lines) also read up.

B. Instructions as in A omitted.

CARTE POSTALE at top—then instructions in four lines beginning respectively — PRIX—OU—PRIX—POSTALES, five ruled lines for address. Frame same as in No. 3, date in lower right corner.

13. 1876. On rose tinted card, dated NOVEMBRE 1875.

14. 1876. On light brown card, dated DECEMBRE 1875.

A. Period after 1875 is small and only  $\frac{1}{2}$  mm. from "5."

B. Period after 1875 large and 1 mm. from "5."

15. 1876. On white cards dated as follows for year 1876:

A. JANVIER 1876.

B. JANVIER 1876. the A reversed.

C. MARS 1876. is 9 mm. long.

D. MARS 1876. is  $9\frac{3}{4}$  mm. long.

E. MARS 1876. 9 mm. long, space between 7 and 6.

F. MARS 1 76. 9 mm. long, the figure 8 is missing.

G. AVRIL 1876.

H. AVRIL 1876. period after 6 above the line.

J. AVRIL 1876. very large period after 1876.

K. 961.—MAI 1876.

L. 961.—MAI 1876 no period after 1876.

M. 961 —MAI 1876 no period after 961 and 8 of 1876 goes below the line.

N. 961.—MAI 1866. the year should be 1876.

O. 981.—MAI 1876. 981 instead of 961.

P. MAI 1876.

Q. 1443.—JUILLET 1876.

R. 144 .—JUILLET 1876. the 3 of 1443 missing.

S. 1443.—JUILLE 1876. the T of JUILLET missing.

T. 1433.—JUILL T 1876. the E of JUILLET missing and 1433 instead of 1443.

U. 2242.—SEPTEMBRE 1876. 20 mm. long.

V. 2242.—SEPTEMBRE 1876.  $20\frac{1}{2}$  mm. long.

W. 2242.—SEPTEMBRE 1876. 22 mm. long.

X. 2242.—SEPTEMBRE 1876.  $21\frac{1}{2}$  mm. long and large period after 1876.

- Y. 2242.—SEPTEMBRE 1876 no period after 1876.  
 Z. 2.42.—SEPTEMBRE 1876. period in place of the second 2 of 2242 and two periods after 2.42.  
 AA. 2242.—SEPTEMBRE 1876. two periods after 2242.  
 BB. 2242. SEPTEMBRE—1876. dash after instead of before SEPTEMBRE.  
 CC. 2242.—SEPTEMBRE 1876. the 8 of 1876 reversed.  
 DD. 2242.—SEPTEMBRE 1876. the T of SEPTEMBRE reversed.  
 EE. 2713.—NOVEMBRE 1876. 21 $\frac{3}{4}$  mm. long.  
 FF. 2713.—NOVEMBRE 1876. 22 $\frac{1}{2}$  mm. long.  
 GG. 2960.—DECEMBRE 1876. 21 mm. long.  
 HH. 2960.—DECEMBRE 1876. 22 mm. long.  
 JJ. 2960.—DECEMBRE 1876. 22 $\frac{1}{2}$  mm. long.  
 KK. 2960. DECEMBRE 1876. no dash after 2960.  
 LL. 2960 —DECEMBRE 1876. no period after 2960.  
 MM. 2960.—DECEMBRE 1876. month spelt wrong.  
 NN. 2960.—DECEMBEE 1876. month spelt wrong.  
 OO. 2960.—DECEMBRE 1876. 1 of 1876 reversed.  
 PP. 2960 —DECEMBRE 1876. no period after 2960 and month spelt wrong.  
 QQ. 29 0 —DECEMBRE 1876. no period after 2960 and 6 of 2960 missing.  
 RR. 2960.—DECEMBRE 18 the 76 of 1876 missing.  
 SS. 2714.—DECEMBRE 1876.

16. 1877. On white cards, dated as follows for year 1877.

- A. 354.—FEVRIER 1877.  
 B. 354 —FEVRIER 1877. no period after 354.  
 C. 354.—FEVRIER 1877. with second R upside down.  
 D. 739 —AVRIL 1877.  
 E. 1240.—JUN 1877.  
 F. 1585.—JUILLET 1877. 1 of 1585 in large black type.  
 G. 1585.—JUILLET 1877. 1 of 1877 in large black type.  
 H. 1585.—JUL 18 7. 1 of JUILLET and first 7 of 1877 missing.  
 J. 585.—JUILLET 1877. 1 of 1585 missing.  
 K. 1846.—SEPTEMBRE 1877.  
 L. 1846. SEPTEMBRE 1877. no dash after 1846.  
 M. 1846.—SEPTEMBRE 1877. the 8 of 1846 reversed.  
 N. 2718.—DECEMBRE 1877.  
 O. 2718.—DECEMBRE 1877. 1 of 1877 reversed.

17. 1878. On white cards, dated as follows for year 1878:

- A. 299.—FEVRIER 1878 is 19 mm. long.

- B. 299.—FEVRIER 1878 is 18 mm. long.  
 C. 299 —FEVRIER 1878. no period after 299.  
 D. 299.—FEVRIER 1878. the second E in FEVRIER very small.  
 E. 750.—AVRIL 1878. 7 of 750 small—7 of 1878 large.  
 F. 750.—AVRIL 1878. 7 of 750 large—7 of 1878 small.  
 G. 750.—AVRIL 1878.  
 H. 850.—AVRIL 1878.  
 J. 1221.—MAI 1878. small black period  $\frac{1}{2}$  mm. from 1878.  
 K. 1221.—MAI 1878. large black period 1 mm. from 1878.  
 L. 1221.—MAI 1878. period after 1878 above the line.  
 M. 1474.—JUN 1878.  
 N. 1474.—JUN 1 .—878 of 1878 missing.

CARTE POSTALE at top, below which is CE COTE EST RESERVE, &c., stamp at right, no frame.

18. 1878. 10 c. black on various colored cards, two lines for address.  
     A. On dark lilac card.  
     B. On gray lilac card.  
     C. On brownish lilac card.  
 19. 1879. 15 c. blue on blue, two lines for address.  
 20. 1879. 10 c. black on various colored cards, three lines for address.  
     A. On pale lilac card.  
     B. On brownish lilac card.  
 21. 1879. 15 c. blue on blue, three lines for address.  
 22. 1879. 10 x 10 c. black on blue, T 3, three lines for address.  
 23. 1879. 15 x 15 c. black on green, T 3, three lines for address.

Same as above, but second line reads CE COTE EST EXCLUSIVEMENT, &c.

24. 1881. 10 c. black on lilac, three lines for address.  
 25. 1883. 10 c. black on lilac, four lines for address.  
 26. 1887. 10 x 10 c. black on blue, T 3, four lines for address.

### FRANCE.—LETTER CARDS.

CARTE LETTRE at top, stamp at right, no lines for address, cards folded at bottom.

1. 1886. 15 c. blue impression on various colored cards.

- A. On dark gray.
  - B. On light gray.
  - C. On dark brown.
  - D. On lighter brown.
  - E. On rose.
  - F. On cream.
  - G. On blue.
- 

CARTE LETTRE at top, small ornament below, stamp at right, four lines for the address, cards folded at top, no inscription at foot.

- 2. 1886. 15 c. blue on buff.
  - 3. 1886. 25 c. black on rose.
    - A. Perforation extends to bottom and sides.
    - B. Perforation extends to sides only.
- 

Same as Nos. 2 and 3, but with POUR OUVRIR, &c., at bottom.

- 4. 1886. 15 c. blue on buff.
- 5. 1886. 25 c. black on rose.
  - A. Period after POINTILLE at foot.
  - B. Comma after POINTILLE reversed.
- 6. 1887. 15 c. blue on gray.
  - A. Perforations extend to sides only.
  - B. Perforations do not extend to bottom or sides.
- 7. 1887. 5 c. surcharged on No. 6 VENDUE 5 CENTIMES in blue.
  - Same as 6 A.

## FRANCE.—BALLOON CARDS.

(Used in Paris during the siege in 1870.)

Arms in centre—PAR BALLON at left.

- 1. 1870. Black on various colored card.
  - A. On white card.
  - B. On yellow card.
  - C. On blue card.
  - D. On gray card.

## BALLOON LETTER SHEETS.

Arms in centre like the cards, inscribed rectangle at right.

- 2. 1870. No value, black on various colored paper.
  - A. On green.

- B. On pink.
- C. On lilac.
- D. On blue.

### FRANCE.—PNEUMATIC CARDS.

SERVICE TELEGRAPHIQUE at top, stamp at right with  
Commerce and Peace and numeral in centre.

1. 1879. 50 c. rose on buff.

---

Same as last, but stamp has female seated, numeral at left.

2. 1880. 50 c. rose on buff.
3. 1880. 50 x 50 c. rose on buff.

---

Cards 1, 2 and 3 surcharged TAXE REDUITE 30 c. in black.

4. 1880. 30 c. on 50 c. card No. 1.
5. 1880. 30 c. on 50 c. card No. 2.
6. 1880. 30 x 30 c. on 50 x 50 c. card No. 3.

---

Same as Nos. 2 and 3.

7. 1880. 30 c. rose on buff.
8. 1880. 30 x 30 c. rose on buff. T 3.

---

Card similar to last, stamp same as last, map of Paris on  
card.

9. 1882. 30 c. black, red and blue on buff, FEVRIER 1882 at left.
10. 1883. 30 c. black, red and blue on buff, AVRIL 1883 at left.
11. 1884. 30 c. black and blue on buff, FEVRIER 1884 at left.
  - A. 4 of 1884 is over E of SERVICE.
  - B. 4 is over space after SERVICE.
  - C. Same as B, but lower part of P of PARTIES missing.

---

Card No. 11 surcharged in red VALABLE POUR TOUT  
PARIS.

12. 1885. 30 c. black, blue and red on buff.
  - A. Same as 11 B, lower ends of P of PARTIES missing.
  - B. Same as 11 B, right lower end of P missing.
  - C. Same as 11 B, whole lower part of P missing.

---

Card No. 8 surcharged same as No. 12.

13. 1885. 30 x 30 c. black and rose on buff. T 3.
-

Similar to No. 9, but no map, and CE COTE EST, &c., at top in capitals.

14. 1885. 30 c. black on buff.
15. 1885. 30 x 30 c. black on buff. T. 3.

### FRANCE.—PNEUMATIC LETTER CARDS.

Similar to Pneumatic Card No. 1.

1. 1879. 75 c. black on blue.

---

Above card surcharged TAXE REDUITE 50 c. in red.

2. 1880. 50 c. on 75 c. black and red on blue.

---

Similar to Pneumatic Card No. 7.

3. 1881. 50 c. black on blue.

---

Similar to last, with map of Paris.

4. 1882. 50 c. black, green and violet on blue, FEVRIER 1882 at left.
5. 1883. 50 c. black, gray and violet on blue, AVRIL 1883 at left.
6. 1884. 50 c. black and red on blue, FEVRIER 1884 at left.

---

Card No. 6 surcharged VALABLE POUR TOUT PARIS in red.

7. 1885. 50 c. black and red on blue.

---

Similar to above, without map CE COTE EST, &c., at top in capitals.

8. 1885. 1 f. black on rose.
9. 1885. 50 c. black on blue.

### GERMAN EMPIRE.

DEUTSCHES REICH (Eagle) POSTGEBIET in curve at top, five paragraphs of instructions at foot, large card about 164 x 113 mm.

1. 1871. No value, buff cards, crown over eagle has no streamers.
  - A. Thick hyphen between CORRESPONDENZ and KARTE over instructions. In Par. 4 N of VERFAHREN is under U of POSTVORSCHUSZ, without C 154 in corner. In Par. 3 last N of KANN is under I of IST.

- B. Same as A, but in Par. 4 N of VERFAHREN is under SZ.
- C. Thin hyphen; in Par. 3 N of KANN is under ST. In Par. 4 N of VERFAHREN is under U, without C 154.
- D. Same as C, but in Par. 4 N of VERFAHREN is under SZ.
- E. With C 154 in corner.

DEUTSCHES (Eagle) REICHSPOSTGEBIET in curve at top, 5 paras. at foot, card same size as No. 1, C 154 in lower right corner.

- 2. 1871. No value, buff card.
  - A. Eagle at top is  $15\frac{1}{2}$  mm. high.
  - B. Eagle 18 mm. high, lower point of arms is over D.
  - C. Eagle 18 mm., lower point of arms over N.
  - D. Eagle 18 mm., lower point of arms over space between N and D.

DEUTSCHES REICHS- (Eagle) POST-GEBIET in straight line at top. Card same size as No. 1, 5 paras. at foot.

- 3. 1871. No value, buff cards, C 154 in lower right corner.
  - A. Crown over eagle without streamers.
  - B. Crown over eagle with streamers.

Inscription at top same as No. 2, but card only 147 x 92 mm., four paras. at foot, C 154 in lower right corner.

- 4. 1872. No value, buff cards.
  - A. In Par. 1, line 4,  $\frac{1}{4}$  GROSCHEN, lower point of arms over centre of N.
  - B. Same as 4 A, but lower point of arms over right stroke of N.
  - C. In Par. 1, line 4, EIN VIERTEL GROSCHEN.

DEUTSCHES REICHS- (Eagle) POST-GEBIET in curve at top. Card size of No. 4, 4 paras. at foot.

- 5. 1872. No value, buff cards.
  - A. In Par. 1, line 4, 1 KREUZER, without C 154 at foot.
  - B. In Par. 1, line 4,  $\frac{1}{4}$  GROSCHEN, with C 154 at foot.

DEUTSCHES (Eagle) REICHSPOSTGEBIET in curve at top, three paras. at foot on original.

- 6. 1872. No value, rose card. T 3.



- A. Double hyphen between CORRESPONDENZ and KARTE, five lines of instruction in each column on original. The fourth line begins VON.
- B. Double hyphen, five lines in each column. The fourth line begins ZUM.
- C. Single hyphen, five lines in each column. Fourth line begins PREISE. c 154 a. at foot.
- D. Single hyphen, five lines in each column. Fourth line begins ZUM.
- E. Same as C, but fourth line begins  $\frac{1}{2}$ , with c 154 a. in corner.
- F. Same as E, but c 154 a. omitted.
- G. Single hyphen, five lines of instruction in first column, four lines in second column. Fourth line begins  $\frac{1}{2}$ . RUCKANTWORT BEZAHLT between thick parenthesis on original, thin parenthesis on reply. In Par. 1 the figure 5 is over R of FUR and under E of FORMULARE.
- H. Same as G, but figure 5 is over space after FUR and under E.
- J. Single hyphen, five and four lines of instruction, thick parenthesis on both cards. Fourth line begins  $\frac{1}{2}$ . The figure 5 in Par. 1 is over space after FUR and under space after FORMULARE.
- K. Single hyphen, five and four lines. The figure 5 in Par. 1 is over R and under space after FORMULARE. CORRESPONDENZ-KARTE, 49 mm., without c 154 a., eagle  $11\frac{3}{4}$  mm. across centre.
- L. Similar to K, but with c 154 a.
- M. Single hyphen, five and four lines, CORRESP, &c., 49 mm., eagle 14 mm. across, with c 154 a.
- N. Same as M, but CORRESP, &c., only 43 mm., period after FREIMARKE in rectangle.
- O. Same as N, but no period after FREIMARKE.
- P. Same as L, but CORRESP, &c., 46 mm., eagle  $11\frac{1}{2}$  mm. across.
- Q. Same as P, but eagle 12 mm. across.

---

DEUTSCHE (Eagle) REICHSPOST in curve at top, POST-KARTE in Gothic letters under eagle, four paras. at foot.

7. 1872. No value, buff cards.

A. Third line begins DES, fourth line MULARE. In

- Par. 2 F of BLEIFEDER is over space between R and T of BRAUCHT.
- B. Lines begin as in A, but in Par. 2 F of BLEIFEDER is over T.
- C. Third line begins MARKEN. In Par. 1 N of VON is over N of GEGEN. C 154 small.
- D. Lines begin as in C. In Par. 1 N of VON is over second E. C 154 large.
- E. Third line begins WERTHS, eleventh line begins CHEN.
- F. Third line begins WERTHS, eleventh line begins ZU.
- G. Third line begins WERTHS eleventh line begins VOR. First word of Par. 4 is POSTKARTEN. In Par. 1  $\frac{1}{4}$  is large.
- H. Lines as in G. First word of Par. 4 POSTKARTEU. In Par. 1  $\frac{1}{4}$  is small.
- J. Third line begins VERA, tenth line begins ZU. In Par. 1 N of ALLEN is over S of DES.
- K. Lines begin as in J. In Par. 1 N of ALLEN is a little to the right of S of DES.
- L. Third line begins VERA, tenth line begins GLEIT. Lower leaf in the eagle has an open centre. In Par. 1 CK of STUCK are united. In Par. 4 M of IM is over space before MIT.
- M. Same as L, but in Par. 4 M of IM is nearly over M of MIT, and C of DEUTSCHLANDS is over the third S of RUSSLANDS.
- N. Same as L, but in Par. 4 M is over M, and C of DEUTSCHLANDS is over D. No period after FREIMARK in rectangle.
- O. Same as N, but period after FREIMARK, and in Par. 4 C of DEUTSCHLANDS is over space between D and S of RUSSLANDS.
- P. Lines and eagle as in L. In Par. 1 C and K of STUCK are separated.
- Q. Lines as in L. Eagle different, being fancy at bottom and two fine lines just above lower leaf. In Par. 1  $\frac{1}{4}$  is over the second E of BRIEFLICHEN. In Par. 4 M of IM is over M of MIT.
- R. Same as Q, but in Par. 1  $\frac{1}{4}$  is nearly over H, and in Par. 4 M is over space before MIT.
- S. Lines as in L. Eagle has leaf at bottom, showing

the fibre; all the capital P's in the instructions are large and nearly square.

- T. Same as S, but with a thin ruled line 71 mm. long under fifth dotted line.
- U. Lines as in L. Eagle similar to Q, but only 14 mm. high. In Par. 1  $\frac{1}{4}$  large. In Par. 3 D in the third line is to the left of V of VERWENDET, and the third dotted line extends to the right of IN.
- V. Lines as in L. Second word in second line of Par. 1 is U instead of UND. AN is 26 mm. from POSTKARTE. In Par. 4 the second R of VERKEHR is over R of RUSSLANDS. In Par. 3 B of BEFORDERT is over D of DIE.
- W. Same as V, but in Par. 3 B of BEFORDERT is over space between D and I of DIE.
- X. Same as V, but in Par. 3 B of BEFORDERT is over I of DIE.
- Y. similar to V. In Par. 4 the second R of VERKEHR is to left of R of RUSSLANDS. In Par. 3 N of NUR is over D of SIND.
- Z. Same as Y, but in Par. 3 N of NUR is over space between N and D of SIND.
- AA. Lines as in V. Second word in second line of Par. 1 is U. AN is 31 mm. from POSTKARTE. In Par. 4 the second R of VERKEHR is to the right of R of RUSSLANDS. In Par. 3 N of NUR is over D of SIND. Period after 154 in right lower corner.
- BB. Similar to AA, but in Par. 4 the second R of VERKEHR is over R, and in Par. 3 N of NUR is over space between N and D of SIND. Comma after 154.
- CC. Lines as in V. AN 31 mm. from POSTKARTE. In Par 3 INGLEICHEN instead of IMGLEICHEN.
- DD. Same as X, but no accent over the A of KAUF-LICH in Par. 1.
- EE. Third line begins WERTHS, fourth line begins DEN. In fourth line of Par. 1 is I KREUZER.
- FF. Third line begins DES, fourth line begins FORM. ?
- GG. Same EE, but fourth line begins POST. ?
- HH. Third line begins VERA, tenth line begins BE. ?
- JJ. Third line begins VERA, tenth line begins AUCH. ?
-

DEUTSCHE (Eagle) REICHSPOST in curve at top, POST-KARTE in Gothic letters under eagle, only three paras. at foot.

8. 1872. No value, rose reply cards. T 3.

- A. Fourth line begins STALTEN. POST-KARTE 44 mm. in two words, separated by hyphen of two strokes. C 154 a. at foot.
- B. Fourth line begins ZUM, five lines of instructions on reply card. POSTKARTE 22 mm. long.
- C. Fourth line begins ZUM, six lines of instructions on reply. POSTKARTE 29 mm. long. In Par. 2, line 1, ISI instead of IST. In Par. 4, line 1, the figure 5 is large.
- D. Similar to C, but figure 5 in line 1 of Par. 4 is small.
- E. Fourth line begins VON- POSTKARTE is 30 mm. long.
- F. Fourth line begins  $\frac{1}{2}$ . POSTKARTE is 30 mm. long. C 154 a. at foot. RUCKANTWORT BEZAHLT in thin parenthesis.
- G. Same as F, but with thick parenthesis. In Par. 2 T of BRAUCHT is under I of BLEIFEDER.
- H. Same as G, but in Par. 2 T of BRAUCHT is under F.
- J. Fourth line begins PREISE. In Par. 1, line 4, 2 KREUZER.
- K. No instructions at foot. A of C 154 a. in italics.
- L. No instructions at foot. A of C 154 a. in roman.

DEUTSCHE (Eagle) REICHSPOST in curve at top. CORRESPONDENZ-KARTE below eagle.

9. 1872. No value, rose reply card. T 3.

Lines begin MIT-GEGEN-BEK- $\frac{1}{2}$ . without C 154 a.

DEUTSCHE (Eagle) REICHSPOST in curve at top, POST-KARTE below arms, no instructions at foot.

- 10. 1872. No value, buff cards, four dotted lines for the address.—Lines 31 mm. apart. C 154 is  $4\frac{1}{2}$  mm. below last dotted line, IN at beginning of third dotted line.
- 11. 1872. No value, buff cards, five dotted lines for address.
  - A. Lines 28 mm. apart. C 154 is 17 mm. below last line.
  - B. Lines 41 mm. apart. C 154 is 4 mm. below last line.

- C. Lines 36 mm. apart. c 154 is  $2\frac{1}{2}$  mm. below last line, lower part of eagle 3 mm. from K.
- D. Lines 36 mm. apart. c 154 is  $2\frac{1}{2}$  mm. below last line, lower part of eagle 2 mm. from K.
- E. Same as D, but no period after c of c 154.
- F. Lines 33 mm. apart. c 154 omitted.

12. 1872. No value, buff cards, six dotted lines for address.

- A. Lines 40 mm. apart. c 154 in right lower corner is 2 mm. below last line, IN at end of fourth dotted line.
- B. Same as A, but c 154 omitted.
- C. Lines 41 mm. apart. c 154 is 4 mm. below last line, IN after fourth line.
- D. Lines 41 mm. apart. c 154 is  $5\frac{1}{2}$  mm. below last line, IN after fourth line.
- E. Lines 39 mm. apart. c 154 is 6 mm. below last line, IN after fourth line.
- F. Lines  $36\frac{1}{2}$  mm. apart. c 154 is 7 mm. below last line.
- G. Lines  $36\frac{1}{2}$  mm. apart. c 154 is 9 mm. below last line.
- H. Lines  $36\frac{1}{2}$  mm. apart. c 154 is 11 mm. below last line.
- J. Lines  $34\frac{1}{2}$  mm. apart. c 154 in left corner 3 mm. below last line.
- K. Lines 36 mm. apart. c 154 is  $6\frac{1}{2}$  mm. below last line, periods after c and 154.
- L. Same as K, but no period after 154.
- M. Same as K, but 5 of c 154 is missing.
- N. Lines 36 mm. apart. c 154 is 2 mm. below last line, periods after c and 154.
- O. Same as N, no periods after c or 154.
- P. Same as N, no period after c.
- Q. Same as N, but c 154 omitted.

13. 1872. No value, buff cards, seven dotted lines for address.

- A. Lines 39 mm. apart, IN on fourth line. c 154 is  $4\frac{1}{2}$  mm. below last line and  $4\frac{1}{2}$  mm. from end of it.
- B. Same as A, but c 154 is 6 mm. from end of last line.
- C. Same as A, but c 154 is 11 mm. from end of last line?
- D. Same as A, but c 154 is 18 mm. from end of last line.
- E. Lines 39 mm. apart, IN after fourth line. c 154 is  $4\frac{1}{2}$  mm. below last line.

- F. Same as E, but c 154 is 6 mm. below last line.  
 G. Lines  $42\frac{1}{2}$  mm. apart, IN after fifth line. c 154 is  $3\frac{1}{2}$  mm. below last line.  
 H. Lines 41 mm. apart, IN after fourth line. c 154 is 4 mm. below last line, P of POSTKARTE is curved at bottom.  
 J. Lines  $50\frac{1}{2}$  mm. apart, IN on fifth line. c 154 is  $\frac{1}{2}$  mm. below last line. FREIMARKEN in rectangle.  
 K. Lines 39 mm. apart, IN after fifth line. c 154 at foot ?  
 L. Lines 43 mm. apart, IN after fourth line. c 154 is 2 mm. below last line.

DEUTSCHE (Eagle) REICHSPOST at top in curve. POSTKARTE below eagle, and below this is AUF DIE VORDERSEITE IST NUR DIE ADRESSE ZU SCHREIBEN, five lines for address, the first preceded by AN, the fourth by BESTIMMUNGSORT and the fifth by WOHNUNG.

14. 1873. No value, buff cards.  
 A. Lines 36 mm. apart. c 154 omitted.  
 B. Lines 36 mm. apart. c 154 in corner.  
 C. Lines 33 mm. apart.

DEUTSCHE REICHS-POST at top in curve, POSTKARTE below, other inscriptions as in 14, stamp in upper right corner; all in a fancy frame.

15. 1873.  $\frac{1}{2}$  gr. brown on buff.  
 A. Dotted lines for address.  
 B. Ruled lines for address.  
 16. 1873. 2 kr. brown on buff.  
 A. Same as 15 A.  
 B. Same as 15 B.  
 17. 1873.  $\frac{1}{2} \times \frac{1}{2}$  gr. brown on buff. T 3.  
 A. Same as 15 A.  
 B. Same as 15 B.  
 18. 1873. 2 x 2 kr. brown on buff. T 3.  
 A. Same as 15 A.  
 B. Same as 15 B.

Same as No. 8, reply card. T 3.

19. 1874. No value, rose. Fourth line reads 5 PFG FÜR JE 5 STÜCK KAUFlich.

DEUTSCHE REICHSPOST in straight line in roman letters.  
POSTKARTE below. No frame, rectangle inscribed.

20. 1875. No value, buff cards.
- A. C 154 small type, 6 mm. long, periods after C and 154.
  - B. Same as A, no period after C.
  - C. C 154 large type, 8 mm. long, periods after C and 154.
  - D. Same as B, no periods after C or 154.
  - E. Without C 154 in corner.
21. 1875. No value, buff reply cards. T 3.
- A. RUCKANTWORT in lower left inscription.
  - B. ANTWORT in lower left inscription.
- 

Same as No. 20, but with stamp in corner, PFENNIGE with final E.

22. 1875. 5 Pfg. lilac on buff.
- A. IN is  $\frac{1}{2}$  mm. from third dotted line.
  - B. IN is  $1\frac{1}{2}$  mm. from third dotted line.
  - C. IN is  $2\frac{1}{2}$  mm. from third dotted line.
23. 1875. 5 x 5 Pfg. lilac on buff. T 3.
- A. RUCKANTWORT in inscription, same as 22 A.
  - B. Same as A, but lower part of F of FUR missing.
  - C. Same as 23 A, but IN is 2 mm. from third dotted line.
  - D. ANTWORT in lower left inscription.
- 

WELTPOSTVEREIN (UNION POSTALE UNIVERSELLE) at top.  
Inscription in black, stamp and frame in color.

24. 1878. 10 Pfg. rose and black on buff.
- A. Round periods after WELTPOSTVEREIN-UNIVERSELLE and DEUTSCHLAND.
  - B. Same as A, but period after UNIVERSELLE is outside the bracket.
  - C. Round periods after WELTPOSTVEREIN and UNIVERSELLE, diamond-shaped period after DEUTSCHLAND.
  - D. Round periods after WELTPOSTVEREIN and UNIVERSELLE, but no period after DEUTSCHLAND.
25. 1879. 10 x 10 Pfg. rose and black on buff. T 3.
- 

Same as No. 22, but PFENNIG without final E.

26. 1880. 5 Pfg. lilac on buff.
-

Same as No. 23 D, but PFENNIG without final E.

27. 1880. 5 x 5 Pfg. lilac on buff. T 3.

Card No. 26 dated in lower right corner.

28. 1882. 5 Pfg. lilac on buff, space between figures for the month and the year.

1 82	6 82	11 82	4 83	9 83	2 84
2 82	7 82	12 82	5 83	10 83	3 84
3 82	8 82	1 83	6 83	11 83	
4 82	9 82	2 83	7 83	12 83	
5 82	10 82	3 83	8 83	1 84	

29. 1882. 5 x 5 Pfg. lilac on buff, T 3, space between figures for the month and year.

6 82	9 82	12 82	3 83	8 83	1 84
7 82	10 82	1 83	4 83	9 83	3 84
8 82	11 82	2 83	7 83	10 83	

30. 1884. 5 Pfg. lilac on buff, figures in corner all close together.

384	984	385	985	386	986
484	1084	485	1085	486	1086
584	1184	585	1185	586	1186
684	1284	685	1285	686	1286
784	185	785	186	786	187
884	285	885	286	886	287

31. 1884. 5 x 5 Pfg. lilac on buff, T 3., figures in corner all close together.

484	984	585	1185	486	986
584	1284	785	1285	586	1186
684	185	885	186	686	1286
784	385	985	286	786	187
884	485	1085	386	886	

POSTKARTE-CARTE POSTALE at top, inscription in black, frame and stamp in color, DEUTSCHLAND-ALLEMAGNE in frame at top.

32. 1886. 10 Pfg. rose and black on buff.  
33. 1886. 10 x 10 Pfg. rose and black on buff. T 3.

Same as card No. 26, date 287 in corner.

34. 1887. 5 Pfg. lilac on buff with WOHNUNG (STRASSE UND HAUSNUMMER) preceding fourth dotted line.  
35. 1887. 5 x 5 Pfg. lilac on buff, T 3, similar to 34 DIE AN- GEBogene, &c., in left corner in two lines.



Similar to No. 34, but third dotted line longer with heavy ruled line under it.

36. 1887. 5 Pfg. lilac on buff.

287	787	1287	588	1088	389
387	887	188	688	1188	489
487	987	288	788	1288	589
587	1087	388	888	189	689
687	1187	488	988	289	

Similar to No. 36, with DIE ANGEBOGENE, &c., in four lines.

37. 1887. 5 x 5 Pfg. lilac on buff. T 3.

387	887	188	688	1188	489
487	987	288	788	1288	
587	1087	388	888	189	
687	1187	488	988	289	
787	1287	588	1088	389	

### GERMAN EMPIRE PNEUMATIC CARDS.

DEUTSCHE REICHSPOST, ROHRPOST-KARTE in two straight lines at top.

1. 1876. 25 Pfg. brown on rose, card 140 x 90 mm.
2. 1877. 25 Pfg. brown on rose, card 125 x 90 mm.
3. 1877. 25 x 25 Pfg. brown on rose, T 3, card 125 x 90 mm.
4. 1877. 25 Pfg. brown on pale rose, card 125 x 87 mm.
5. 1877. 25 x 25 Pfg. brown on pale rose, card 125 x 87 mm.

### GIBRALTAR.

Natal card surcharged.

1. 1886.  $\frac{1}{2}$  p. brown.

St. Vincent card surcharged.

2. 1886. 1 p. carmine.

Stamp with head of Queen in circle.

3. 1887.  $\frac{1}{2}$  p. green.
4. 1887. 1 p. carmine.
5. 1889.  $1\frac{1}{2}$  p. brown.
6. 1889.  $\frac{1}{2} \times \frac{1}{2}$  p. green. T 3.
7. 1889. 1 x 1 p. carmine. T 3.
8. 1889.  $1\frac{1}{2} \times 1\frac{1}{2}$  p. brown. T 3.

Cards of 1887 and 1889 issues surcharged with new value of CENTIMOS in black.

9. 1889. 5 c. on  $\frac{1}{2}$  p. green.
10. 1889. 10 c. on 1 p. carmine.
11. 1889. 15 c. on  $1\frac{1}{2}$  p. brown.
12. 1889. 5 x 5 c. on  $\frac{1}{2}$  x  $\frac{1}{2}$  p. green. T 3.
13. 1889. 10 x 10 c. on 1 x 1 p. carmine. T 3.
14. 1889. 15 x 15 c. on  $1\frac{1}{2}$  x  $1\frac{1}{2}$  p. brown. T 3.

## GREAT BRITAIN.

Stamp head of Queen in circle, frame key pattern. TO at left of card.

1. 1870.  $\frac{1}{2}$  p. deep lilac. Frame 109 x 74 mm.
2. 1870.  $\frac{1}{2}$  p. pale lilac. Frame 112 x 65 mm.

---

Stamp head of Queen, HALF PENNY above, POSTAGE below, embossed. Inscription in black.

3. 1872.  $\frac{1}{2}$  p. rose on white card.
  - A. POST CARD is 37 mm. long, wavy line below POST CARD is  $11\frac{1}{2}$  mm. long. THE ADDRESS, &c., in slanting letters.
  - B. POST CARD 37 mm. long, wavy line  $14\frac{1}{2}$  mm. THE ADDRESS, &c., in capitals.
  - C. POST CARD 37 mm., wavy line  $9\frac{1}{2}$  mm. THE ADDRESS, &c., in slanting capitals.
  - D. POST CARD 38 mm., wavy line 16 mm. THE and ADDRESS begin with capitals.
  - E. POST CARD 40 mm., two ruled dashes  $12\frac{1}{2}$  mm. each. THE ADDRESS, &c., in capitals.
  - F. POST CARD 41 mm., ruled dash 25 mm. THE ADDRESS, &c., in slanting capitals in two lines towards left of card.
  - G. POST CARD 42 mm., wavy dash  $16\frac{1}{2}$  mm. THE ADDRESS, &c., in slanting capitals.
  - H. POST CARD 42 mm., no dash. THE ADDRESS, &c., in capitals.
  - J. POST CARD 43 mm., ruled dash 25 mm. THE ADDRESS, &c., in capitals.
  - K. POST CARD  $46\frac{1}{2}$  mm., two ruled dashes  $12\frac{1}{2}$  mm. each. THE ADDRESS, &c., in capitals.
  - L. POST CARD  $48\frac{1}{2}$  mm., two ruled dashes  $12\frac{1}{2}$  mm. each. THE ADDRESS, &c., in capitals.

- M. POST CARD 62 mm., no dashes. THE ADDRESS, &c., in capitals.
- N. POST CARD 89 mm., with arms between in old English letters. THE ADDRESS, &c., in slanting old English type, first S of ADDRESS and S of SIDE are long letters.
- O. POST CARD 86 mm., in other respects similar to N.
- P. POST CARD 48 mm., no dashes. THE ADDRESS, &c., in capitals 56 mm. long.

Similar to above, but inscription in brown.

4. 1872.  $\frac{1}{2}$  p. rose on white, POST CARD 42 mm., no period after CARD, no dashes. THE ADDRESS, &c., in capitals.

Stamp same as No. 3. Inscription in various colors. THE ADDRESS, &c., and POST CARD are of various designs as noted below.

5. 1872.  $\frac{1}{2}$  p. rose on white.
- A. POST CARD 74 mm. long. The words begin with a large P, each letter being smaller till centre is reached, when they begin to get larger again. THE ADDRESS, &c., in three lines in scroll, lilac impression.
- B. Same as A, but blue impression.
- C. Same as A, but green impression.
- D. POST CARD 54 mm. long between parallel lines, upper half of letters are shaded, P and C large. THE ADDRESS, &c., is in capitals in one line 77 mm. long, rose impression.
- E. Same as D, but brown impression.
- F. Same as D, but lilac impression.
- G. Same as D, but green impression.
- H. Same as D, but blue impression.
- J. POST CARD 53 $\frac{1}{2}$  mm. long, centre of letters shaded. THE ADDRESS, &c., in scrip letters, green impression.
- K. POST CARD 54 mm. long, lower part of letters shaded, P and C large. THE ADDRESS, &c., in capitals in one line 77 mm. long, lilac impression.
- L. Same as K, blue impression.
- M. Same as K, brown impression.
- N. Same as K, rose impression.

O. POST CARD 46 mm. long, in scroll. THE ADDRESS, &c., in two straight lines, green impression.

P. Same as O, brown impression.

---

Same as No. 2, but without TO at left.

6. 1875.  $\frac{1}{2}$  p. lilac on buff.

7. 1875.  $\frac{1}{2}$  p. red brown on thick white card.

---

FOREIGN POST CARD at top. Greek pattern frame.

8. 1875.  $1\frac{1}{2}$  p. red brown on buff.

---

Arms in centre between POST and CARD, stamp with head of Queen in circle, with value above, no frame, arms 14 mm. wide at bottom.

9. 1878.  $\frac{1}{2}$  p. red brown on buff.

10. 1878.  $\frac{1}{2}$  p. red brown on thick white card.

---

Same as No. 9, but arms  $15\frac{1}{2}$  mm. wide at bottom.

11. 1878.  $\frac{1}{2}$  p. red brown on buff.

---

Same as No. 10, but without arms.

12. 1878.  $\frac{1}{2}$  p. red brown on thick white card.

---

GREAT BRITAIN (GRANDE BRETAGNE) at top, no frame.

13. 1879. 1 p. red brown on buff.

14. 1879.  $1\frac{1}{2}$  p. red brown on buff.

---

GREAT BRITAIN and IRELAND at top, no frame.

15. 1879. 1 p. red brown on buff,  $121 \times 86\frac{1}{2}$  mm.

---

Same as No. 10.

16. 1882.  $\frac{1}{2} \times \frac{1}{2}$  p. brown on thick white card. T 3.

A. Perforated at fold.

B. Not perforated at fold.

17. 1882.  $\frac{1}{2} \times \frac{1}{2}$  p. brown on buff. T 3.

A. 24 perforations at fold.

B. 28 perforations at fold.

C. 36 perforations at fold.

---

POST CARD—GREAT BRITAIN and IRELAND at top, no frame,  $139 \times 89$  mm.

18. 1883. 1 p. brown on buff.

19. 1883.  $1\frac{1}{2}$  p. brown on buff.

20. 1883. 2 p. brown on buff.
21. 1883. 1 x 1 p. brown on buff. T 3.
22. 1883. 1½ x 1½ p. brown on buff. T 3.
23. 1883. 2 x 2 p. brown on buff. T 3.

---

POST (arms) CARD at top, over BRITISH EMPIRE, stamp with full length portrait of the Queen.

24. 1889. 3 p. carmine on buff.

### GREAT BRITAIN.—TELEGRAPH CARDS.

Octagon stamp in left corner embossed.

1. 1872. 1 sh. green, arms on reverse measure 22 mm.
2. 1874. 1 sh. green, arms on reverse measure 25 mm.

### GREECE.

Stamp head of Mercury in upper right corner. Greek and French inscription in four lines at top, Greek frame.

1. 1876. 15 l. blue on white, Paris impression, dash in inscription is 16 mm. long.
2. 1878. 15 l. blue on white, Athens impression, dash in inscription is 14½ mm. long.

---

Similar to above, all inscriptions in Greek, three lines of inscription at top.

3. 1883. 5 l. black on buff.
4. 1883. 10 l. blue on buff.
5. 1883. 5 x 5 l. black on buff. T 4.
6. 1883. 10 x 10 l. blue on buff. T. 4.

---

Similar to above, five lines of inscription at top in Greek and French.

7. 1883. 10 l. carmine on blue.
8. 1883. 10 x 10 l. carmine on blue. T 4.

### HELIGOLAND.

HELIGOLAND (arms) POST OFFICE at top, no frame, inscription in dotted rectangle.

1. 1871. No value, black inscription, six dotted lines for the address.

A. On grayish brown card.

- B. On reddish brown card.
2. 1873. No value, black inscription, four dotted lines.
- A. On grayish brown card.
- B. On dark brown card.
- C. On yellow brown card.
- 

Same as above, with frame of ruled line and interior waved line, arms in centre in a circle, four dotted lines for address.

3. 1874. No value, black on grayish brown card.
- A. Frame 137 x 77 mm.
- B. Frame 140 x 80 mm.
- 

Similar to last, with frame, arms in oval, no inscription in dotted rectangle.

4. 1874. No value, black impression.
- A. On gray card.
- B. On brown card.
- 

Similar, arms in oval, rectangle for stamp of waved lines inscribed.

5. 1874. No value, black on buff cards.
- A. Pale buff card. P of POST OFFICE is over R of KARTE.
- B. Glazed yellowish buff card. P of POST is over A of KARTE.
- 

HELGOLAND POST-OFFICE at top, no arms in centre, no frame, stamp at right, four dotted lines for address.

6. 1875. 5 Pfg. green stamp on buff cards.
- A. With one stamp in upper right corner.
- B. With one stamp in upper right and one in upper left corner.
- C. With two stamps in upper right corner.
- D. With two stamps in upper right corner and one in upper left corner.
- E. With two stamps in upper right corner, one in upper left corner and one in lower left corner.
- 

Same as No. 6 A, with fancy frame, and reply instructions in lower left corner.

7. 1875. 5 x 5 Pfg. green on buff. T 3.
- A. Period after ANSWER is under I of IS.

B. Period is to left of I of IS.

HELIGOLAND in fantastic letters at top, below is FOREIGN POST-CARD. Shield, with value below at left, frame of a knotted rope.

8. 1878. 10 Pfg. black on white, four dotted lines for address.

Similar to last, but UNION POSTALE UNIVERSELLE in frame at top.

9. 1879. 10 Pfg. black on white, three dotted lines for address.  
10. 1880. 10 x 10 Pfg. black on white, T 3, three dotted lines.

Cards 6 A and 7 surcharged UNION POSTALE UNIVERSELLE, and new value over old value.

11. 1879. 10 Pfg. on No. 6 A, black and green.  
12. 1879. 10 x 10 Pfg. on No. 7, black and green. T 3.  
A. Same as 7 A.  
B. Same as 7 B.

## HOLLAND.

BRIEF-KAART at top, four lines of inscription at foot, frame of key pattern.

1. 1871. No value, lilac on buff card.  
2. 1871. 2½ c. lilac on buff card.

BRIEFKAART in one word at top, no instructions at foot, frame of key pattern, AAN before first dotted line, TE before third line.

3. 1872. 2½ c. violet on buff.  
A. 68 dots in fourth dotted line.  
B. 92 dots in fourth dotted line.  
C. Same as B, but on yellowish buff card.  
4. 1874. 2½ x 2½ c. violet on buff, L 3, same as 3 A.

BRIEFKAART at top, no instructions, frame key pattern, without AAN and TE.

5. 1873. 5 c. blue on buff.  
A. First and fourth dotted lines 24 mm. apart.  
B. Lines 27 mm. apart.  
6. 1873. 5 x 5 c. blue on buff, T 4, same as 5 A.

7. 1873. 5 x 5 c. blue on buff. L 3.

A. Same as 5 A.

B. Same as 5 B.

---

Same as card No. 3 B, but no stamp.

8. 1874. No value, brown inscription and frame on buff.
- 

Same as card No. 2.

9. 1874. 2½ c. violet stamp, with lilac frame.
- 

Card No. 8 with 5 c. stamp in upper right corner.

10. 1874. 5 c. blue stamp, with inscription and frame brown, on buff card.
- 

Same as No. 5, but with AAN and TE.

11. 1876. 5 c. blue on buff.

A. Same as 5 A.

B. Same as 5 B, thin card.

C. Same as 11 B, but thick card.

---

BRIEFKAART at top in centre, arms at left, stamp at right, no frame.

12. 1878. 2½ c. lilac on buff cards, four dotted lines for address.

A. With 24 horizontal lines in shield, buff card.

B. Same as A, but on yellow buff card.

C. With 44 horizontal lines in shield.

13. 1878. 2½ x 2½ c. lilac on buff. T 3.

14. 1878. 2½ x 2½ c. lilac on buff. T 4.

A. On pale buff cards.

B. On dark buff cards.

15. 1878. 5 c. blue on buff, four dotted lines for address.

16. 1878. 5 x 5 c. blue on buff. T 4.

17. 1878. 5 x 5 c. blue on buff. T 3.

A. On pale buff cards.

B. On dark buff cards.

---

Similar to last, but larger, no frame, only two dotted lines for the address.

18. 1881. 2½ c. lilac impression and stamp.

A. On pink colored card.

B. On salmon colored card.



19. 1881.  $2\frac{1}{2} \times 2\frac{1}{2}$  c. lilac impression and stamp.
    - A. On pink colored card.
    - B. On salmon colored card.
  20. 1881. 5 c. blue on blue.
  21. 1881. 5 x 5 c. blue on blue. T 3.
- 

Similar to No. 20, but four lines of inscription at top.

22. 1886. 5 c. blue on blue.
23. 1887. 5 x 5 c. blue on blue. T 3.

## HOLLAND.—LETTER SHEET.

POST-BLAD in scroll at top, stamp in centre at top.

1. 1888. 5 c. blue on white paper.

## HUNGARY.

CORRESPONDENZ-KARTE in arched line over arms of Hungary, stamp of Austria at right.

1. 1869. 2 kr. orange on buff, AN at left of first dotted line.
    - A. Period after bottom line of instructions on the reverse.
    - B. No Period.
- 

LEVELEZESI LAP in arched line over arms of Hungary, stamp same as No. 1.

2. 1869. 2 kr. orange-yellow on buff, CZIM at left of first dotted line.
    - A. Yellow stamp.
    - B. Orange stamp.
    - C. Brownish orange stamp.
    - D. Orange stamp, A. DOSTAINTEZET instead of A POSTAINTEZET on the reverse at foot.
- 

LEVELEZESI LAP in straight line at top over CORRESPONDENZ-KARTE, no arms, stamp of Hungary at right.

3. 1871. 2 kr. orange on buff card.
  - A. CZIM and ADRESSE are 2 mm. apart.
  - B. CZIM and ADRESSE only 1 mm. apart, on dark buff card.
  - C. Same as B, but on pale buff card.

- D. Same as B, but the ground-work of the circles in stamp containing "2" and "KR" are of horizontal lines only.

MAGY KIR POSTA in arched line over arms, below is LEVELEZO-LAP in straight line. Watermark MAGYAR KIR POSTA in two horizontal lines.

4. 1874. 2 kr. brown on buff and straw cards.  
 A. Watermark reads straight, dark brown on dark buff card.  
 B. Same as A, but light brown on straw card.  
 C. Watermark reversed, brown on buff card.

Same as No. 4, but watermark M. K. POSTA in one line vertically.

5. 1877. 2 kr. reddish orange on buff cards.  
 A. Watermark reads down from front of card.  
 B. Watermark reads down from back of card.

MAGYAR KIR POSTA in straight line over LEVELEZO-LAP, arms at left.

6. 1877. 2 kr. reddish orange on buff cards, watermark M. K. POSTA in one line, the letters being  $13\frac{1}{2}$  mm. high.  
 A. Watermark reads up the card from the front.  
 B. Watermark reads down the card from the front.
7. 1880. 2 x 2 kr. reddish orange on light buff, T 3, watermark same as 6.  
 A. On original the watermark reads down the card from the back.  
 B. On original the watermark reads up the card from the front.
8. 1880. 2 kr. reddish orange on brownish buff, watermark M. K. POSTA in slanting letters 18 mm. high.  
 A. Watermark reads up the card from the front.  
 B. Watermark reads down the card from the back.
9. 1880. 2 kr. brown on brownish buff, watermark same as 8.  
 A. Watermark reads down the card from the back.  
 B. Watermark reads up the card from the front.
10. 1880. 2 kr. brown on brownish buff, no watermark.
11. 1880. 2 x 2 kr. brown on brownish buff, T 3, no watermark.

EGYETEMES POSTAEGYESULET MAGYAR POSTAIGAZGATAS  
in curved line at top, arms at left.

12. 1880. 5 kr. rose on buff, watermark same as No. 6.
  - A. Watermark reads down the card from the front.
  - B. Watermark reads up the card from the back.
13. 1880. 5 x 5 kr. rose on buff, watermark same as No. 6.
  - A. On original watermark same as 12 A.
  - B. On original watermark same as 12 B.
14. 1880. 5 x 5 kr. rose on buff, watermark slanting letters same as No. 8.
  - A. Watermark reads down the card from the front
  - B. Watermark reads up the card from the front.

---

MAGY. KIR—KR.UG.POSTA in straight line at top.

15. 1881. 2kr. reddish orange on brownish buff, watermark slanting letters same as in No. 8.
  - A. Watermark same as in 12 A.
  - B. Watermark same as in 12 B.
16. 1881. 2 kr. brown on light buff, watermark slanting letters as in No. 8.
  - A. Watermark reads down the card.
  - B. Watermark reads up the card.
17. 1881. 2 x 2 kr. brown on buff, T 3, watermark straight letters as in No. 6.
  - A. On original, watermark reads down the card.
  - B. On original, watermark reads up the card.
18. 1883. 2 kr. brown on light buff, no watermark.
19. 1886. 2 x 2 kr. brown on light buff, T 3, no watermark.
20. 1885. 2 x 2 kr. reddish orange on brownish buff, T 3, watermark slanting letters same as in No. 8.
  - A. On original, watermark reads up the card from the front.
  - B. On original, watermark reads down the card.

### HUNGARY—LETTER CARDS.

MAGYAR KIR POSTA at top over ZART-LEVELEZO-LAP,  
oval stamp.

1. 1886. 3 kr. green on yellow.
2. 1886. 5 kr. red on yellow.

---

Same as above, but with KR.UG.POSTA-ZATVORENA DOPIS-  
NICA added.

3. 1886. 3 kr. green on yellow.

4. 1886. 5 kr. red on yellow.  
Same as 1 and 2.
5. 1887. 3 kr. green on blue.
6. 1887. 5 kr. red on blue.  
Same as 3 and 4.
7. 1888. 3 kr. green on blue.
8. 1888. 5 kr. red on blue.

### HUNGARY—TELEGRAPH CARD.

Inscription at top begins A KERESZTVONALOK, &c., spaces for twenty words, stamp in upper left corner.

1. 1873. 50 kr. blue on blue card.

### ICELAND.

BRJEFSPJALD in fancy letters at top. The letter B, the stamp, frame, instructions and dotted lines in blue, rest in gray.

1. 1879. 5 aur. blue and gray on white.
  - A. Ornaments in all four corners of frame correct.
  - B. The left upper corner ornament is turned to the left.
  - C. The same ornament is turned toward the top.

---

BRJEFSPJALD in plain letters at top, key pattern frame, all in same color.

2. 1880. 8 aur. lilac on white.
  - A. No error in frame.
  - B. The sixth ornament from bottom in frame at left is like a corner ornament.

---

ALSHERJAR-POSTFJELAGID in curved line at top, over four lines of inscription, key pattern frame.

3. 1880. 10 aur. rose on white.
  - A. Same as 2 A.
  - B. Same as 2 B.

---

Replies of the above.

4. 1883. 5 x 5 aur. blue and gray on white. T 3.
5. 1883. 8 x 8 aur. lilac on white. T 3.
6. 1883. 10 x 10 aur. rose on white. T 3.

## ITALY.

CARTOLINA POSTALE at top in centre in straight line, stamp with bust of Victor Emanuel in upper left corner, fancy frame, card 114 x 80 mm.

1. 1874. 10 c. brown on buff.
  - A. On pale buff card.
  - B. On yellowish buff card.
2. 1874. 10 x 5 c. brown on rose card. T 4.
  - A. Second line of inscription ends CMI—17 cuts in rouletting at fold.
  - B. Same as A, but 30 cuts in rouletting at fold.
  - C. Second line of inscription ends CM—17 cuts in rouletting at fold.
  - D. Same as C, but 30 cuts in rouletting at fold.

---

CARTOLINA POSTALE DI STATO at top over arms, official stamp in upper left corner, black round stamp in lower left corner.

3. 1877. 10 c. lake on white card, frame of two lines.
4. 1878. 10 c. lake on white card, frame of one line.

---

CARTOLINA POSTALE at top over arms, stamp same as No. 1, no frame, card 138 x 79 mm.

5. 1878. 10 c. red brown on pale buff card.
6. 1878. 10 c. red brown on white card.

---

Inscription and size of card same as last, no frame, stamp is in the upper left corner, has head of King Humbert in oval.

7. 1879. 10 c. brown on white.
  - A. Without date at left.
  - B. With 81 at left.
  - C. With 82 at left.
  - D. With 83 at left.
  - E. With 84 at left.
  - F. With 85 at left.
  - G. With 86 at left.
  - H. With 87 at left.
  - J. With 88 at left.
  - K. With 89 at left.
8. 1879. 10 x 5 c. brown on rose. T 4.
  - A. Without date at left.

- B. With 81 at left.
  - C. With 82 at left.
  - D. With 83 at left.
  - E. With 84 at left.
- 

UNIONE POSTALE UNIVERSALE at top over CARTOLINA ITALIANA PER L'ESTERO. Stamp same as No. 7, no frame.

- 9. 1882. 10 c. brown on green.
    - A. Without date at left.
    - B. With 84 at left.
    - C. With 86 at left.
    - D. With 87 at left.
    - E. With 88 at left.
  - 10. 1882. 10 x 5 c. brown on green. T 4.
  - 11. 1883. 15 c. brown on gray, no arms in centre.
  - 12. 1883. 15 x 15 c. brown on gray, T 4, no arms in centre.
- 

Same as No. 8, but folded, T 3.

- 13. 1884. 10 x 5 c. brown on rose.
    - A. With 84 at left.
    - B. With 85 at left.
    - C. With 86 at left.
    - D. With 87 at left.
    - E. With 88 at left.
- 

CARTOLINA POSTALE at top over DA CINQUE CENTESIMI, no frame, stamp with cross in centre in upper right corner, card 111 x 70 mm.

- 14. 1889. 5 c. green on red brown.

### ITALY.—LETTER CARDS.

BIGLIETTO POSTALE at top, stamp with cross in centre.

- 1. 1889. 5 c. green on gray.

### ITALY.—OFFICIAL CARDS.

CARTOLINA POSTALE DI STATO at top over arms, stamp in upper left corner, frame chain pattern.

- 1. 1875. 10 c. lake on white card.
- 2. 1875. 15 x 0 c. green on white card. T 4.

## LUXEMBURG.

GROSSHERZOGTHUM LUXEMBURG in arched line over CORRESPONDENZ-KARTE, all in German with seven paragraphs at foot in two columns.

1. 1870. No value, black on red brown card.
  - A. The top of B of BEIM in head line to instructions is forked.
  - B. Top of B curved. Fifth word of Par. 7 is FUR. In Par. 1 LOKAL.
  - C. Top of B curved. Fifth word of Par. 7 FUR. In Par. 1 LAKAL.
  - D. Top of B curved. Fifth word of Par. 7 is DIE.
2. 1870. No value, black on pale buff card.
  - A. Same as 1 A.
  - B. Same as 1 B.
  - C. Same as 1 C.
  - D. Same as 1 D.
3. 1870. No value, black on brown card.
  - A. same as 1 A.
  - B. Same as 1 B.
  - C. Same as 1 C.
  - D. Same as 1 D.

---

GRAND-DUCHE DE LUXEMBOURG in arched line over CARTE-CORRESPONDANCE, all in French, seven paras. at foot in two columns.

4. 1870. No value, black on pale buff card.
  - A. Third line of Par. 1 ends ET.
  - B. Third line of Par. 1 ends LES, third line of Par. 6 ends LE.
  - C. Third line of Par. 1 ends LES, third line of Par. 6 ends WUR-. In Par. 7 CELLES directly over CELLES.
  - D. Lines end as in C. In Par. 7 the first CELLES is a little to the right of the second CELLES.

---

Inscription at top same as No. 1, but smaller card, only four paras. at foot, 49 BIS in lower right corner, no frame.

5. 1873. No value, black on bright yellow card.
  - A. Diamond-shaped period after LUXEMBURG.
  - B. Same as A, but T of BRAUCHT in Par. 2 is above the rest of the line.

- C. Round period after LUXEMBURG. The 2 of Par. 2 has base straight. Fancy dash above CORRESPONDENZ-KARTE has star in centre.
- D. Same as C, but fancy dash is a thin wavy line separated in the centre with three small dashes.
- E. Round period. The 2 of Par. 2 has base curved, WOHNUNG at beginning of fourth dotted line.
- F. Same as E, but WOHNUG instead of WOHNUNG.
- 

Similar to last, but rectangle of ruled lines, 49 TER in lower right corner.

6. 1873. No value, black on rose, reply card. T 3.
- A. In Par. 4 the period at end of Par. is under o.
- B. Period at end of Par. 4 is under G, and s of CORRESPONDENZ at top is over U of RUCKANTWORT.
- C. Period at end of Par. 4 is under G, s of CORRESPONDENZ is over c on rough card.
- D. Same as C, but on smooth card.
- 

Inscription similar to No. 1, but s of CORRESPONDENZ small, no instructions at foot.

7. 1873. No value, black on thin whitish card.
- A. Arched line at top, 76 mm. long, heavy line across card at foot, card 185 x 120 mm.
- B. Arched line 72 mm., without heavy line, card 148 x 97 mm.
- 

Inscription at top same as No. 4, but different type, four ruled lines for address, the third preceded by LIEU DE DESTINATION, no instructions at foot, card 148 x 97 mm.

8. 1873. No value, black on whitish card.
- 

Inscription at top same as No. 4, three paras. at foot, 49 in lower right corner, frame of two waved dotted lines crossing each other, forming small ovals.

9. 1874. No value, black on yellow card.
- A. Fig. 3 of Par. 3 has a round top.
- B. Fig. 3 straight top, 49 in corner is under NDA.
- C. Fig. 3 straight top, 49 is under ANC.
- D. Same as C, but break in frame in lower left corner.
-



Inscription same as No. 1, four paras. at foot, 49 BIS in lower right corner, rectangle of ruled lines. Frame two rows of small circles, each alternate one being solid.

10. 1874. No value, black on orange card.
    - A. Top line 70 mm. long, lower left corner circle in frame is black.
    - B. Top line 76 mm. long, lower left corner circle in frame is orange.
- 

Same as No. 10, but frame of two rows of squares, each alternate square being solid.

11. 1874. No value, black on orange card.
    - A. All corner squares are black.
    - B. All corner squares black, except the lower left one, which is orange.
    - C. The two corner squares at left are black, the two at right are orange.
- 

CARTE-CORRESPONDANCE, CORRESPONDENZ-KARTE in two straight lines at top, no rectangle, no instructions at foot, frame of small circular-shaped ornaments, ruled lines for address.

12. 1874. No value, black on orange.
    - A. Ornaments in the frame all alike.
    - B. The twenty-third ornament in bottom of frame from the left is diamond-shaped.
- 

Same as last, but with arms at left, and stamp at right of inscription at top, dotted lines for address.

13. 1874. 5c. lilac on white card.
  14. 1874. 6 c. red lilac on rose-tinted card.
- 

Same as last, but the four centre ornaments in frame at top and bottom, the two centre ornaments at sides, and the three ornaments in the four corners are different from the others.

15. 1874. 5 c. lilac (shades) on blue tinted cards.
  - A. Lilac impression, dash under CARTE-CORRESPONDANCE, 8 mm. long.
  - B. Same as A, but dash 9 mm. long.
  - C. Pale lilac impression, dash 9 mm. long.
16. 1874. 6 c. reddish violet on rose tinted card.

17. 1874. 5 x 5 c. lilac (shades) on blue tinted cards. T 3.
  - A. Pale lilac.
  - B. Bright lilac.
18. 1874. 6 x 6 reddish violet on rose tinted card. T 3.

---

Same as last, but frame zigzag bars crossing each other every two mm.

19. 1875. 5 c. violet on blue tinted card.
20. 1875. 5 c. brown on blue tinted card.
21. 1875. 6 c. reddish violet.
  - A. On pale flesh colored card.
  - B. On deep rose colored card.
22. 1875. 5 x 5 c. lilac on blue tinted card. T 3.
23. 1875. 6 x 6 c. reddish violet on rose tinted card. T 3.

---

CARTE-CORRESPONDANCE arched over CORRESPONDENZ. KARTE, no frame. In lower left corner notice in French and German.

24. 1876. 5 c. gray lilac on white card. Four lines for address, CORRESPONDENZ has short s.
  - A. Period after BESTIMMT under second E of ADRESSE.
  - B. Period after BESTIMMT is under space between s and E.
  - C. The last E of ADRESSE is below the other letters.
  - D. DIEFE instead of DIESE.
  - E. Same as B, but colon after ADRESSE.
  - F. The last s of ADRESSE is upside down.
25. 1876. 10 c. red brown on white, four lines for address, CORRESPONDENZ has short s.
  - A. Colon after ADRESSE and space between E and s of ADRESSE.
  - B. Same as 24 F.
  - C. Same as 24 C.
  - D. Same as 24 B.
  - E. Same as 24 D.
  - F. Colon after ADRESSE, no space as in 25 A.
26. 1876. 12½ c. blue on white, four lines for address, CORRESPONDENZ has short s.
  - A. Same as 24 A.
  - B. Same as 24 F.
  - C. Same as 24 C.
  - D. Same as 24 D.
  - E. CC COTE. &c., instead of CE COTE, &c.

27. 1876. 6 c. rose on rose card, notice in left corner larger, four lines for the address, short s.  
 A. First dotted line begins under centre of A.  
 B. Line begins under right stroke of A.
- 

Same as No. 24, but CORRESPONDENZ has long s, four lines for address.

28. 1877. 10 c. red brown on white.  
 A. First E of EXCLUSIVEMENT is over U of FUR.  
 B. E is over space between F and U of FUR.
29. 1877. 12½ c. blue on white.
- 

Same as last, four lines for address, with POUR L'ALLEMAGNE and NACH DEUTSCHLAND in lower right corner.

30. 1877. 6 c. reddish violet on white.  
 A. Period after DEUTSCHLAND is directly under period after ALLEMAGNE.  
 B. Period after DEUTSCHLAND is to right of period after ALLEMAGNE.
31. 1877. 6 c. rose on white.  
 A. Same as 30 B.  
 B. NACH, &c., is over POUR, &c.
- 

Same as No. 28, but only three lines for address, POUR L'INTERIEUR and FUR'S INLAND in lower right corner.

32. 1877. 5 c. gray on white.  
 A. Dash below CORRESPONDENZ-KARTE 18 mm. long.
33. 1877. 5 c. lilao on white.  
 A. Same as 32 A.  
 B. Dash only 14 mm. long.
- 

Same as 32, three lines for address, POUR L'ALLEMAGNE and NACH DEUTSCHLAND in lower right corner.

34. 1877. 6 c. rose on white.  
 A. Dash below CORRESPONDENZ-KARTE 18 mm. long, N of ALLEMAGNE is over N of DEUTSCHLAND.  
 B. Dash 18 mm. long. N is to right of N of DEUTSCHLAND.  
 C. Dash 15 mm. s of EST is large.  
 D. Dash 18 mm. CC COTE instead of CE COTE.  
 E. Dash 18 mm. NACH, &c., over POUR, &c.  
 F. Dash 14 mm.

35. 1877.  $12\frac{1}{2}$  c. blue on white, POUR L'ALLEMAGNE omitted.  
 A. Dash 18 mm.  
 B. Dash 15 mm.  
 C. Dash 14 mm.  
 D. Dash 13 mm.  
 E. Dash 18 mm. CC COTE instead of CE COTE.
36. 1877. 10 c. yellow brown on white, same as 35.  
 A. Dash 18 mm.

Same as above, long s, three lines for address, instructions in lower corners omitted.

37. 1878.  $12\frac{1}{2}$  x  $12\frac{1}{2}$  c. rose on rose tinted cards. T 3.  
 A. Dashes 16 mm. on original, 14 mm. on reply.  
 B. Dashes 15 mm. on original,  $14\frac{1}{2}$  mm. on reply.

Cards of 6 c. surcharged in black DEBITE A 5 CENTIMES POUR LE SERVICE INTERIEUR in two lines under stamp.

38. 1878. 5 c. on 6 c. cards as follows:  
 A. 5 c. on 30 A.  
 B. 5 c. on 31 A.  
 C. 5 c. on 31 B.  
 D. 5 c. on 34 B.  
 E. 5 c. on 34 E.  
 F. 5 c. on 34 F.

These cards are similar to the above, but are on colored cards, and are probably essays.

- A. 5 c. gray lilac on deep rose card, like 32 A.  
 B. 6 c. rose on deep rose card, like 34 B.  
 C. 10 c. yellowish red on yellow card, like 36.  
 D.  $12\frac{1}{2}$  c. blue on orange card, like 35 B.

CARTE-POSTALE at top, with hyphen between, stamp has arms in centre, POSTKARTE with a long s.

39. 1878. 5 c. lilac on white.  
 A. Both A's in CARTE-POSTALE have straight bars.  
 B. Both A's in CARTE-POSTALE have v-shaped bars.  
 C. Same as B, but POPLKARTE instead of POSTKARTE.  
 D. First A straight bar, second A v-shaped bar.  
 E. Same as D, but space between first R and E of RESERVE.  
 F. First A v-shaped bar, second A straight bar.

40. 1878. 10 c. brown on white.  
 A. Same as 39 A.  
 B. Same as 39 B.  
 C. Same as 39 D.

---

Same as 39, but no hyphen between CARTE and POSTALE.

41. 1879. 5 c. lilac on white.  
 A. Same as 39 A.  
 B. Same as 39 A, but tail of R of CARTE extends below the line.  
 C. Same as 39 B.  
 D. Same as 39 C.  
 E. Same as 39 D.  
 F. Same as 39 F.
42. 1879. 12½ c. blue on white.  
 A. Same as 39 A.  
 B. Same as 39 B.  
 C. Same as 39 C.  
 D. Same as 39 D.  
 E. Same as 39 F.

---

UNION POSTALE UNIVERSELLE (WELTPOSTVEREIN) at top,  
 arms at left, stamp has arms in centre.

43. 1879. 10 c. brown on white cards.  
 A. Top line 73 mm. long on thick card.  
 B. Top line 73 mm. long on thin card.  
 C. POSTAL instead of POSTALE in first line.  
 D. POSTKAR instead of POSTKARTE in third line.  
 E. Top line different type, 69 mm. long, the P's in POSTALE and POSTKARTE extend below the line and curve to the left.  
 F. Top line same as in E. In third line the P's do not go below the line, and are in different type from E.
44. 1879. 10 x 10 c. brown on white cards. T 3.  
 A. Same as 43 A, perforated at foot, dash below UNIVERSELLE is 11 mm. long on original and 9 mm. on reply.  
 B. Same as 43 A, not perforated at fold, dash 9 mm. on original, 11 mm. on reply.  
 C. Same as 44 B, but dash is 8 mm. on both cards, the A of POSTKARTE on reply is smaller than the other letters.

D. Same as 43 E on both cards.

E. Same as 44 D, but P's extend below the line on the reply card only.

Same type, &c., as No. 43 F, but top line is 73 mm. long.

45. 1880. 10 c. brown on buff cards.

A. On brownish buff card.

B. On pale buff card.

Oddities or errors of some of the above cards.

46. Printed on both sides of the card.

A. On one side 41 A, on reverse 41 F.

B. On one side 42 C, on reverse 43 A.

C. On one side 42 E, on reverse 43 A.

D. On one side 43 E, on reverse reply half of 44 D.

CARTE POSTALE at top, no hyphen, POSTKARTE below with short S, A's in top line V-shaped bars, stamp with arms in centre.

47. 1880. 5 c. lilac on buff card.

A. On deep buff card.

B. On pale buff card.

48. 1882. 5 x 5 c. lilac on buff card. T 3.

Same as No. 47, but stamp different, has figure of value in centre.

49. 1882. 5 c. lilac on buff.

A. Period after ADRESSE.

B. No period after ADRESSE.

C. No accents over RESERVE.

50. 1882. 5 x 5 c. lilac on buff. T 3.

UNION POSTALE UNIVERSELLE (WELTPOSTVEREIN) at top, stamp has numeral of value in centre.

51. 1882. 10 c. bistre on buff.

A. With accents on RESERVE.

B. No accents on RESERVE.

52. 1882. 10 x 10 c. bistre on buff. T 3.

A. Third line of inscription on original 46 mm. long.

B. Third line on original 50 mm. long.

53. 1885. 10 c. carmine on yellow buff card, German inscription in lower left corner 47 mm. long.

54. 1885. 10 c. carmine on tinted white card, German inscription only 44 mm. long, and UUR instead of NUR.

---

CARTE POSTALE at top, no hyphen between, stamp same as in 51.

55. 1885. 5 c. green on buff, both A's have v-shaped bars.  
 56. 1887. 5 c. green on buff, both A's have straight bars.

---

GRAND-DUCHE DE LUXEMBOURG — GROSSHERZOGTHUM LUXEMBURG at top over CARTE POSTALE—POST-KARTE, German inscription in left corner is in Roman type.

57. 1888. 5 c. green on light buff.  
 A. The A at beginning of first dotted line is a capital letter.  
 B. The A is in block type.  
 58. 1888. 5 x 5 c. green on light buff. T. 3.

---

Inscription and stamp same as 51, but German inscription in left corner is in Roman type.

59. 1889. 10 c. carmine on light buff.  
 A. Line under UNIVERSELLE begins under IV.  
 B. Line under UNIVERSELLE begins under VE.  
 C. 1ST instead of IST in lower left corner.  
 60. 1889. 10 x 10 c. carmine on light buff. T. 3.

### MALTA.

Stamp with head of Queen in upper right corner.

1. 1884. 1 p. rose on buff.  
 2. 1884. 1 x 1 p. rose on buff. T. 3.

### MONACO.

Stamp at right inscribed PRINCIPAUTE DE MONACO.

1. 1886. 10 c. brown on yellow.  
 2. 1886. 10 x 10 c. brown on yellow. T. 3.  
 3. 1887. 10 c. brown on violet.

### MONACO.—LETTER CARDS.

Stamp as above.

1. 1886. 15 c. rose on buff.  
 2. 1886. 25 c. green on rose.  
 3. 1888. 25 c. black on rose.

## MONTENEGRO.

ADMINISTRATION DES POSTES DE MONTENEGRO is the  
fifth line of inscription, arms at left, stamp at right.

1. 1888. 2 n. rose on buff.
  - A. DESTINE A, no accents.
  - B. DESTINE A, with accents, the A in roman type.
  - C. DESTINE A, with accents, the A in italics.
2. 1888. 2 n. rose on pale green, same as 1 A.
3. 1888. 3 n. black on light blue, same as 1 A.
4. 1888. 3 n. black on pale green, same as 1 B.
5. 1888. 2 x 2 n. rose on buff. T 3.
  - A. Second line in left corner is LA CARTE CIO-JOINTE,  
&c.
  - B. LA CARTE CI-JOINTE—O of REPONSE large. Period  
after third line of instructions in left corner is  
over D ADRESSE.
  - C. Same as B, but period is over space between A and  
D of ADRESSE.
  - D. o of REPONSE same type as the other letters.
6. 1888. 3 x 3 n. black on light blue, T 3, same as 5 A.
7. 1888. 3 x 3 n. black on pale green.
  - A. Same as 5 B.
  - B. Same as 5 D.

## NORTH GERMAN CONFEDERATION.

NORDDEUTSCHES POSTGEBIET in curve at top, rectangle  
for stamp in upper right corner, six paragraphs of in-  
struction at foot.

- A.** BESTIMMUNGSORT on right half of card.
1. 1870. No value, black on buff, first two lines of instruc-  
tions end with ALLEN and FUR.
    - A. B of BESTIMMUNGSORT is over DES. In Par. 3 E  
of GANZEN is to the right of E of WELCHE. In  
Par. 5 s of SOWOHL is over K of VERKEHR.
    - B. Same as A, but E of GANZEN is over E.
    - C. B is over DES. In Par. 5 s of SOWOHL is over E,  
and z of ZU is over B of POSTGEBIETS.
    - D. Same as C, but z of ZU is to right of B of POST-  
GEBIETS.
    - E. B is over EN. In Par. 5 o of OESTERREICH is under  
G of POSTGEBIETS.



F. B is over EN. In Par. 5 O of OESTERREICH is under TG of POSTGEBIETS.

G. B is over EN. In Par. 5 O of OESTERREICH is under the first E of POSTGEBIETS.

H. B is over EN. The line heading instructions beginning with ZUR GEFALLIGEN, &c., is only 101 mm. long.

2. 1870. No value, black on buff, first two lines of instructions end with BEI and BEZOGEN. B is over DES.

**B. BESTIMMUNGSORT on left half of card.**

3. 1870. No value, black on buff, first two lines end ALLEN and FUR.

A. B is over W, dotted lines on the reverse, ruled line under third dotted line 77 mm. long. In inscription preceding the fourth dotted line F of EMPFANGERS is over B of ANGEGBEN.

B. Same as A, but F of EMPFANGERS is to left of B of ANGEGBEN.

C. B is over IT of MIT. The headline to instructions is 96 mm. long.

D. B is over WOH, ruled line under third dotted line 74 mm. long. The headline to instructions 93 mm. long. C 154 in lower right corner.

E. B is over WO, ruled line 74 mm., headline to instructions 102½ mm., no dotted lines on reverse, C 154 in lower right corner.

F. B is over W, no dotted lines on the reverse, ruled line 77 mm. long.

G. B is over DE, no dotted lines on reverse, ruled line 73 mm. long.

H. Same as D, but without dotted lines on the reverse.

4. 1870. No value, black on buff, first two lines end ALLEN and WERDEN.

A. Double hyphen between CORRESPONDENZ and KARTE at top.

B. Single hyphen at top, headline to instructions 106 mm. long. B is over MI.

C. Same as B, but hyphens between CORRESPONDENZ and CARTE in the headline over instructions are very close together.

- D. Single hyphen at top, B is over O, headline to instructions only 98½ mm. long. C 154 in lower right corner.
5. 1870. No value, black on buff, first two lines end BEI and WER.
6. 1870. No value, black on buff, first four lines end BEI. BEZOGEN-BERECHNET-AUS.
7. 1870. No value, black on buff, first four lines end BEI. BEZOGEN-BERECHNET-FULLEN.
- A. B is over DE, ruled line 51 mm., headline to instructions 105 mm.
- B. B is over OH, ruled line 76 mm., headline 92 mm. In Par. 3 O of SOWIE is over E of SEIN.
- C. B is over WOH, ruled line 76 mm., headline 92 mm. In Par. 3 O of SOWIE is over S of SEIN.

## NORWAY.

- BREV-KORT at top, frame of open T-shaped ornaments, every other one inverted, stamp at right.
1. 1872. 3 sk. carmine on buff, thin wavy line inside of frame.
- A. Frame correct.
- B. First ornament at top from left is inverted.
- C. Ornaments 32 and 34 in frame at top differ.
- D. Ornaments 5 and 38 in frame at top differ.
- E. Ornaments 10 and 18 at top and 6 at left from top differ.
2. 1872. 3 sk. carmine on buff, without thin wavy line inside of frame.
- A. Same as 1 A.
- B. Same as 1 B.
- C. Same as 1 C.
- D. Same as 1 E.
- E. Ornaments 5, 38 and 49 at top differ.
3. 1873. 2 sk. blue on white.
- A. Ornament 48 at bottom different.
- B. Ornaments 9 at top, 27, 32, 45, 46 at bottom, and 3 at left differ.
- C. Ornaments 35, 36, 37, 38, 51, 52 at top, 28, 43, 44, 45, 46, 51 at bottom differ.
- D. Ornaments 3 and 4 at top and 45 at bottom differ.

E. Ornaments 17 and 19 at left, 27 at right, 15 and 16 bottom differ.

F. Ornaments 27 at right, 15 and 16 at bottom differ.

4. 1877. 0.05 ore surcharged in black over stamp of No. 3.
- A. Same as 3 A.
  - B. Same as 3 B.
  - C. Same as 3 C.
  - D. Same as 3 D.
  - E. Same as 3 E.
  - F. Same as 3 F.

---

Similar to above, but frame slightly different. TIL omitted.

5. 1877. 10 ore carmine on buff, straight inner line to frame.
- A. First ornament in upper right corner of frame forms half a T.
  - B. First ornament as above forms a T.

---

Similar to last, but frame has inner wavy line, PAA DENNE, &c., in large and small capitals.

6. 1877. 5 ore blue on white cards.
- A. Wavy line is  $4\frac{1}{2}$  mm. from outer line of frame, BREV-KORT begins 40 mm. from outer line of frame, dash after BREV-KORT is over the first s of ADRESSEN, the two A's of PAA have V-shaped bars.
  - B. BREV-KORT begins 35 mm. from outer line of frame, dash is over first E of ADRESSEN, the A's of PAA have horizontal bars, tail of R of SKRIVES extends below the next letter.
  - C. BREV-KORT  $34\frac{1}{2}$  mm. from frame, dash over first E of ADRESSEN, the A's of PAA have V-shaped bars.
  - D. BREV-KORT 38 mm. from frame, dash over first E of ADRESSEN, the A's of PAA have V-shaped bars, the figure 5 in curve in stamp is very narrow and badly shaped.
  - E. Same as D, but figure 5 in curve is small and a little bent.
  - F. Same as D, but figure 5 in curve is small and well formed.
  - G. Same as D, but figure 5 in curve is large.
  - H. BREV-KORT  $35\frac{1}{2}$  mm. from frame, dash over first s of ADRESSEN, the A's of PAA have V-shaped bars.

- J. BREV-KORT 40 mm. from frame, dash over first s of ADRESSEN, the A's of PAA have v-shaped bars.
- K. BREV-KORT 36 mm. from frame, dash over first E of ADRESSEN, the A's of PAA have horizontal bars, R of SKRIVES long, but does not extend under the next letter as in B.
- L. BREV-KORT 36 mm. from outer frame, dash is over the second s of ADRESSEN. The first A in PAA has horizontal bar, the second A has a v-shaped bar, the figure 5 in curve is small.
- M. Same as L, but figure 5 in curve is large.
7. 1877. 6 ore green on buff.
- A. The R of SKRIVES and the R of ADRESSEN have long tails, the figure 6 in centre of stamp is thin.
- B. Same as A, but figure 6 is fat and broad.
- C. The R's as above do not extend below the line, the figure 6 is thin.
- D. Same as C, but figure 6 is fat and broad.
8. 1879. 6 x 6 ore green on white. T 4.
9. 1879. 10 x 10 ore carmine on white. T 4.

Similar to last, but PAA DENE, &c., in capitals and small letters.

10. 1881. 5 ore blue on white.
- A. Period after POSTFRIM in stamp.
- B. No period after POSTFRIM.
11. 1881. 6 ore green on buff.
- A. First ornament in frame at top from the left is like half a T, the figure 6 in stamp in curve is large.
- B. Frame same as A, the 6 in curve is small.
- C. First ornament in frame at top from the left forms a T, figure 6 in stamp in curve is small.
12. 1881. 10 ore carmine on white.

Halves of cards Nos. 8 & 9 sold as single cards.

13. 1881. 6 ore green on white.
14. 1881. 10 ore carmine on white.

BREVKORT FRA NORGE at top, frame as above.

15. 1881. 6 x 6 ore green on white. T 3.
- A. Frames correct on both cards, s of SVARET in lower left corner is directly under K of KORT.

- B. Frames correct on both cards, s of SVARET is a little to the right of K of KORT.
- C. Frame correct on original card, on reply card the sixth ornament in frame at bottom from the right is like a corner ornament.
- D. On original card the sixth ornament at bottom like a corner ornament, on reply the frame is correct.
- E. On original card the sixth ornament at bottom like a corner ornament and the centre ornament in right frame is turned sideways, on reply the frame is correct.

Similar to No. 15, but with VERDENSTPOSTFORENINGEN, &c., at top, same size and frame as last.

16. 1881. 10 x 10 ore carmine on white. T 3.
- A. Frames correct on both cards. Period after VERDENSTPOSTFORENINGEN on the original card, no period after that word on reply.
  - B. Frames correct on both cards. No period after VERDENST, &c., on original card, but with period after that word on reply.
  - C. Same as 15 E, periods as in 16 B.
  - D. Frame correct on original card. On reply the sixth ornament at bottom is like a corner ornament, and the centre ornament in right frame is turned sideways, periods as in 16 A.

Same as No. 10, with MED BETALT SVAR under BREV-KORT.

17. 1882. 5 x 5 ore blue on dark buff. T 4.
- A. Figure 5 in curve in stamp large on both cards.
  - B. Figure 5 small on both cards.
  - C. Figure 5 small on original, large on reply.
  - D. Figure 5 large on original, small on reply.
  - E. Same as D, but on reply card the first ornament in frame at top from left is out of place.

Inscription same as in No. 15, but larger cards 140 x 90 mm.

18. 1882. 6 x 6 ore green on white. T 4.
- A. Round periods after ADRESSEN on both cards.
  - B. Diamond periods after ADRESSEN on both cards.
  - C. Diamond period on original, round period on reply.
  - D. Round period on original, diamond period on reply.  
On original card the first ornament in frame at top from left is out of place.

VERDENSPSTFORENINGEN in curve at top, frame same as before with inner wavy line. TIL before first dotted line.

19. 1882. 10 ore carmine on white.
  - A. NORVEGE in thin parenthesis.
  - B. NORVEGE in thick parenthesis.
  - C. Thin parenthesis in front, thick at end of NORVEGE.
  - D. Same as A, but error in upper left corner of frame.
20. 1882. 10 x 10 ore carmine on white. T 4.
  - A. NORVEGE between thick and thin parenthesis on original, and between thick parenthesis on reply.
  - B. NORVEGE between thin parenthesis on both cards.
  - C. NORVEGE between thin and thick parenthesis on original, and between thick and thin on reply card.
  - D. NORVEGE between thick parenthesis on original, and between thin on reply card.
  - E. NORVEGE between thick and thin parenthesis on original, and between thin and thick on reply card.
  - F. NORVEGE between thin parenthesis on original, and between thin and thick on reply cards, error in upper left corner of frame.

BREV-KORT at top, PAA DENNE, &c., below, frame as above, with inner wavy line, TIL above first dotted line, frame 128 x 78½ mm.

21. 1883. 5 ore blue on white.
  - A. Small 5 in curve in stamp.
  - B. Large 5 in curve, error in upper left corner of frame.
22. 1883. 5 x 5 ore blue on white. T 4.
  - A. Round periods after ADRESSEN on both cards.
  - B. Diamond period on original, round on reply after ADRESSEN.
  - C. Diamond periods after ADRESSEN on both cards, L of BETALT is over I of SKRIVES.
  - D. Same as C, but L of BETALT is over V of SKRIVES.
23. 1883. 5 ore green on white.
  - A. 33 ornaments in frame at sides, very large 5 in curve in stamp, diamond period after ADRESSEN.
  - B. Same as A, with small 5 in curve in stamp, round period after ADRESSEN.

- C. Same as A, with very small 5 in curve in stamp.
- D. 32 ornaments in frame at sides, very large 5 in curve in stamp, diamond period after ADRESSEN.
- E. 32 ornaments, small 5 in stamp, round period after ADRESSEN.
- F. KUU instead of KNU.
- G. ADRESSEU instead of ADRESSEN.

24. 1883. 5 x 5 ore green on white.

- A. Light green, diamond periods on both cards after ADRESSEN.
- B. Same as A, but dark green.
- C. Light green, round periods on both cards after ADRESSEN.

---

VERDENSPPOSTFORENINGEN in curve at top, frame with inner wavy line, TIL above first dotted line.

25. 1884. 6 ore brown on white.

- A. NORVEGE between thin parenthesis, P of VERDENSPPOSTFORENINGEN is over P of POSTALE, round period after ADRESSEN.
- B. NORVEGE between thin parenthesis, P is over O of POSTALE, diamond period after ADRESSEN.
- C. NORVEGE between thick parenthesis, wavy line begins under O of POSTALE.
- D. NORVEGE between thick parenthesis, wavy line begins under S of POSTALE.
- E. Same as D, but round period after ADRESSEN.
- F. NORVEGE between thin and thick parenthesis, wavy line begins under O of POSTALE, diamond period after ADRESSEN.
- G. NORVEGE as in F, wavy line begins under S of POSTALE, round period after ADRESSEN.
- H. NORVEGE as in F, wavy line begins under OS of POSTALE, diamond period after ADRESSEN.
- J. NORVEGE between thick and thin parenthesis, wavy line begins under S of POSTALE, round period after ADRESSEN.
- K. Same as J, but diamond period after ADRESSEN.

26. 1884. 10 ore carmine on white.

- A. Same as 25 A.
- B. Same as 25 B.
- C. Same as 25 C.
- D. Same as 25 D.

- E. Same as 25 E.
- F. Same as 25 F.
- G. Same as 25 G.
- H. Same as 25 H.
- J. Same as 25 J.
- K. Same as 25 K.

BREVKORT FRA NORGE at top, frame with inner wavy line,  
TIL before first dotted line.

- 27. 1884. 6 x 6 ore brown on white. T 4.
  - A. Same as 18 A.
  - B. Same as 18 B.
  - C. Same as 18 C.
  - D. Same as 18 D.
  - E. Same as 18 D, but frame correct.

VERDENSPPOSTFORENINGEN in curve at top, frame with  
inner wavy line, TIL above first dotted line.

- 28. 1886. 6 x 6 ore brown on white. T 4.
  - A. Parenthesis on original thin and thick, on reply both thin.
  - B. Parenthesis on original thin and thick, on reply thin and thick.
  - C. Parenthesis on original thick and thin, on reply both thick.
  - D. Parenthesis on original thick and thin, on reply both thin.
  - E. Parenthesis on original thick and thin, on reply thin and thick.
  - F. Parenthesis on original both thick, on reply thin and thick.
- 29. 1886. 10 x 10 ore carmine on white. T 4.
  - A. Same as 28 A.
  - B. Same as 28 B.
  - C. Same as 28 C.
  - D. Same as 28 D.
  - E. Same as 28 E.
  - F. Same as 28 F.

BREV-KORT at top in centre, frame as above, but with  
loops instead of wavy interior line.

- 30. 1886. 5 ore blue on white.
  - A. Frame 128 x 77½ mm., error in frame at sides about 33 mm. from top of frame.



B. Frame 126 x 76½ mm. Large figure of value in curve of stamp.

C. Frame 126 x 76½ mm., smaller figure in curve.

---

VERDENSPPOSTFORENINGEN in curve at top, frame with loops inside.

31. 1887. 10 ore carmine on white.

A. Frame 125 x 77 mm.

B. Frame 127 x 77 mm.

---

Cards Nos. 25 surcharged 3 ORE in black over stamp.

32. 1888. 3 ore on 6 ore brown on white.

A. Same as 25 A.

B. Same as 25 B.

C. Same as 25 C.

D. Same as 25 D.

E. Same as 25 E.

F. Same as 25 F.

G. Same as 25 G.

H. Same as 25 H.

J. Same as 25 J.

K. Same as 25 K.

---

Cards Nos. 28 surcharged 3 ORE in black over stamp.

33. 1888. 3 x 3 ore on 6 x 6 ore, brown on white. T 4.

A. Same as 28 A.

B. Same as 28 B.

C. Same as 28 C.

D. Same as 28 D.

E. Same as 28 E.

F. Same as 28 F.

---

BREV-KORT at top, no frame.

34. 1888. 3 ore orange on white.

A. Large 3 in curve in stamp, round period after ADRESSEN.

B. Small 3 in curve, round period after ADRESSEN.

C. Small 3 in curve, square period after ADRESSEN.

35. 1888. 3 x 3 ore orange on white. T 4.

---

VERDENSPPOSTFORENINGEN at top in curve, no frame.

36. 1888. 10 x 10 ore carmine on white. T 3.

## NORWAY.—LOCAL CARDS.

KRISTIANSSUNDS BYPOST at top, stamp has large numeral in centre, fancy frame.

1. 1879. 2 ore blue on white.
2. 1879. 4 ore claret on white.

BREV-KORT at top, stamp has head in oval, M ANDRESEN & CO. at top, fancy frame.

3. 1880. 2 ore vermillion on white.
4. 1880. 4 ore blue on white.

BREV-KORT in fancy letters at top, below is TIL in small letters, stamp is inscribed THRONDHJEMS at top, BY-POST at foot, value at sides.

5. 1881. 3 ore blue on white.

BREV-KORT at top, stamp inscribed HOLMESTRAND at top, numeral in centre, fancy frame.

6. 1888. 3 ore dark blue on white.
7. 1888. 3 x 3 ore blue on white. T 4.

BREV-KORT—DRAMMENS BY & PAKKEPOST in two lines, the latter arched.

8. 1888. 3 ore black on pink.

BREV-KORT—ARENDALS BYPOST at top, frame of two lines, the inner one being wavy.

9. 1888. 3 ore red on white.

## PORTUGAL.

Arms in centre between BILHETE and POSTAL, ornamental frame.

1. 1878. 15 R brown on buff.
  - A. DA PORTA under stamp.
  - B. DE PORTA under stamp.
2. 1878. 25 R rose on buff.
  - A. All the fourth line of inscription in parenthesis.
  - B. Only EXCEPTO HESPAHNA in parenthesis.
  - C. No parenthesis before EXCEPTO.
  - D. HESPHANA instead of HESPAHNA.

E. Same as A, but S of HESPAHHA upside down.

F. Same as B, but S of HESPAHHA upside down?

3. 1879. 15 x 15 R brown on buff. T 3.

UNION POSTALE UNIVERSELLE-PORTUGAL at top in two lines, no frame.

4. 1879. 20 R blue on buff.

A. SR, in italics, under L of BILHETE.

B. SR, in italics, under B of BILHETE.

C. Same as A, but I of BILHETE broken at the bottom.

D. Same as B, but B of BILHETE broken at the bottom.

5. 1879. 30 R green on buff.

A. Same as 4 A.

B. Same as 4 B.

C. With UNIVESELLE instead of UNIVERSELLE.

D. Same as 4 D.

6. 1879. 20 x 20 R blue on buff. T 3.

A. Same as 4 A.

B. Same as 4 B.

C. RESTOSTA instead of RESPOSTA.

BILHETE (Arms) POSTAL at top, no frame, stamp in right upper corner.

7. 1880. 10 R brown on buff, L of POSTAL is 6 mm. from stamp.

A. POSTAL at top.

B. POSLAL instead of POSTAL.

8. 1881. 10 x 10 R brown on buff. L 3.

A. Last word of fourth line DIRECCAO on original.

B. DIRECCAO instead of DIRECCAO.

Similar to No. 7, but clear impression, and the letters of the top line are open. L of POSTAL is 8 mm. from stamp.

9. 1882. 10 R dark brown on nearly white card.

Similar to 4 E, but card is 135 x 90 mm.

10. 1882. 20 R blue on nearly white card.

11. 1882. 20 x 20 R blue on buff card.

BILHETE POSTAL in curve over arms, stamp in upper left corner, with value below stamp.

12. 1884. 10 R brown on buff.

A. D'ESTE LADO, &c., measures 49 mm. long.

B. D'ESTE LADO, &c., 46 mm., 9 mm. between third and fourth dotted lines.

C. D'ESTE LADO, &c., 46 mm.,  $7\frac{1}{2}$  mm. between above lines, period after DIRECCAO.

D. Same as C, but no period after DIRECCAO.

13. 1884. 10 x 10 R brown on buff. L 3.

---

UNION POSTALE UNIVERSELLE at top over CARTE POSTALE, long narrow card, with fancy frame.

14. 1887. 20 R rose on pale buff.

15. 1887. 20 x 20 R rose on pale buff. L 3.

### PORTUGAL.—LETTER CARDS.

CARTO POSTAL at top, stamp at right.

1. 1887. 25 R brown on red buff.

2. 1887. 50 R blue on blue.

### ROUMANIA.

CARTA DE POSTA in fancy capitals at top, octagonal stamp at right, arms (20 mm. wide) at left, five paragraphs of instructions at foot.

1. 1873. 5 B. blue on white card.

A. Accent over A of CIRCULA, none over A of DESCHISSA. Period after POSTA over T of EXACTA below. In Par. 2 P of PERMIS is over T of ESTE.

B. Period after POSTA is over first A in EXACTA. No period at end of first para. In Par. 2 P of PERMIS is over the space between ESTE and RESERVAT.

C. Same as B, but in Par. 5 SCRISOR instead of SCRISORILE.

D. Period after POSTA is between T and A of EXACTA. In Par. 2 P of PERMIS is between S and T of ESTE. In Par. 5 POTU with only half a T.

E. Period after POSTA is between A and C of EXACTA. In Par. 2 P of PERMIS is over S of ESTE. In Par. 3 no accent over A of SCRISOR.

F. Period after POSTA is over last A of EXACTA. In Par. 2 P of PERMIS is between S and T of ESTE. In Par. 3 the I of SI PE is missing.

G. Period after POSTA is over last A of EXACTA. In Par. 2 P of PERMIS is over last E in ESTE.

---

Reply cards of this issue are simply two ordinary cards unsevered, when so employed are surcharged at the Post-office with the letters R. P. (*i. e.*, RESPUNS PLATIT) in a circle in blue ink.

2. 1873. 5 x 5 B. blue on white. T 3.

The following have been found together:

A and B—A and C—B and C—D and D—  
D and E—E and F.

---

Same as above, but on different colored cards.

3. 1873. 5 B. blue on very rough dark brown cards.

A. No period after POSTA.

B. Period after POSTA.

C. Same as B, but no cedilla under T of CORRESPONDENTA in Par. 2.

D. Same as B, but in Par. 3 last letter of ADRESSA missing.

E. Same as B, but in Par. 5 the third, fifth and ninth letters of SCRISORILE are missing.

4. 1873. 5 x 5 B. blue on very rough dark brown cards; see note above No. 2. T 3.

The following have been found together:

A and B—C and D.

---

Same as above, but arms smaller, only 18 mm. wide.

5. 1873. 5 B. blue on pale buff cards.

A. In Par. 5 RECOMADA instead of RECOMANDA.

B. In Par. 1 CA instead of LA.

C. In Par. 3 LAMURTA instead of LAMURITA.

D. In Par. 2 ECRI instead of SCRI.

E. In Par. 5 POT instead of POTU.

F. Second line ruled instead of dotted.

G. In Par. 3 POSSIBIL. In Par. 5 SCRISORILE.

H. Same as G, but first letters of SCRISORILE broken.

J. Accent over A in CIRCULA at top.

K. Accent over first I in OBSERVATII in head line of instructions.

6. 1873. 5 x 5 B. blue on pale buff cards. T 3.

The following have been found together:

D and J—D and G—A and B—C and E—K and J—  
G and G.

**CARTA DE POSTA** at top in double-lined letters, five paragraphs of instructions at foot.

7. 1875. 5 B. blue on pale buff, fifth word of Par. 1 is **VENDU**.
  - A. The D before the first dotted line is large, 6 mm. high. This card is correct with one exception, viz.: In Par. 5 **SCRISORILE** instead of **SCRIS. SORILE**.
  - B. The D is large. In Par. 2 **OCRRESPONDENTA**.
  - C. The D is large. In Par. 5 no accent over A of **POSTA**.
  - D. The D is large. In Par. 3 **SERISSA** instead of **SCRISSA**.
  - E. The D is large. In Par. 3 **POSIBIL**. In Par. 5 **SCRISORILE**. In Par. 2 no cedilla under T of **CORRESPONDENTA**.
  - F. The D is small (only  $4\frac{1}{2}$  mm. high). In Par. 1 **DE** instead of **PE**.
  - G. The D is small. In Par. 1 no accents over the A's of **CARTILE** and **POSTA**.
  - H. The D is small. In Par. 5 no accent over the A in **PLATINDUSE**.
  - J. The D is small. In Par. 4 no accent over the second A of **ADUCATORULUI**.
  - K. The D is small. In Par. 5 the second R of **IN-REGISTRARE** in Roman type.
8. 1875. 5 x 5 B. blue on pale buff, T 3, fifth word in Par. 1 is **VENDU**.

The following have been found together:

B and G—C and K—D and J—B and H—C and F.

9. 1876. 5 B. blue on pale buff, fifth word in Par. 1 is **VINDU**.
  - A. The D large. In Par. 1 **VALOREA** instead of **VAL-OAREA**.
  - B. Same as A, but D of **DE** in headline to instructions is turned sideways.
  - C. The D large. In Par. 5 **SCRISORILE**. In Par. 4 no accent over A of **PLATESCE**.
  - D. The D large. In Par. 3 **POSIBIL** instead of **POS-SIBIL**.
  - E. The D large. In Par. 5 **POT** instead of **POTU**.
  - F. The D large. In Par. 4 no accent over A of **PLATESCE**.
  - G. The D large. In Par. 3 the second S of **ADRESSA** is upside down.
  - H. Same as G, but in Par. 2 I of **PERMIS** is missing.

J. The D large. In Par. 5 SCRISORILE instead of SCRISORILE.

K. The D small. In Par. 5 SCRISORILE. In Par. 4 with accent over A of PLATESCE.

L. The D small. In Par. 4 NIMIC. In Par. 5 POTU.

M. The D small. In Par. 4 NIMIC. In Par. 5 POT.

N. The D small. In Par. 2 no comma after ADRESSA.

O. The D small. In Par. 2 CORRESAONDENTA instead of CORRESPONDENTA.

P. The D is small. In Par. 5 SCRISORILE instead of SCRISORILE.

Q. The D small. In Par. 5 the second s of SCRISORILE upside down, and no period at end of Pars. 2 and 4.

R. The D small. In Par. 4 ADUCATORULOR.

10. 1876. 5 x 5 B. blue on pale buff, T 3, fifth word in Par. 1 VINDU.

The following have been found together:

J and L—N and F—L and C.

CARTA DE POSTA at top in open capitals, smaller card than last, single lined frame. Three lines for address.

11. 1877. 5 B. brown on white card.

A. Dotted lines separating cards on sheet.

B. Perforated along dotted line.

12. 1877. 5 x 5 B. brown on white, T 4. This is two single cards unsevered.

Same as No. 11.

13. 1877. 5 B. brown on white paper.

A. With period after 5 of Par. 5.

B. Without period after 5.

14. 1877. 5 x 5 B. brown on white paper, T 4, two single cards unsevered.

A. Same as 13 A.

B. Same as 13 B.

CARTA POSTALA in heavy black letters at top, arms and stamp as before, no frame, dash under CARTA POSTALA.

15. 1878. 5 B. blue on rose card.

A. TIRAJU—1878 at foot, dash below CARTA POSTALA 13 mm. long.

B. Same as A, but dash only 11 mm. long.

C. TIRAJU—at foot, dash same as in B.

16. 1878. 5 x 5 B. blue on rose card, T 4, two single cards unsevered.

A. Same as 15 A, on both cards.

B. Same as 15 C, on both cards.

Inscription as in No. 15, but different type, arms larger, stamp same, no instructions at foot.

17. 1879. 5 B. black on rose card.

A. Stamp is 13 mm. above first line for address.

C. Stamp is 9 mm. above line.

18. 1879. 5 x 5 B. black on rose card, T 4, two single cards unsevered.

A. Same as 17 A, on both cards.

B. Same as 17 B, on both cards.

UNION POSTALE UNIVERSELLE—ROUMANIE in two lines at top, arms and stamp as before.

19. 1879. 10 B. rose on rose card.

20. 1879. 10 x 10 B. rose on rose card. B 4.

A. Perforated at fold. On reply large accent over E of REPONSE.

B. Same as A, but small accent.

C. Not perforated at fold.

21. 1883. 10 B. rose on buff card.

22. 1883. 10 x 10 B. rose on buff card. B 4.

A. On reply large accent over E of REPONSE.

B. On reply small accent over E of REPONSE.

Similar to Nos. 17 and 18, but top line measures 64 mm. long.

23. 1883. 5 B. black on rose, reverse white.

24. 1883. 5 x 5 B. black on rose, reverse white. B 4.

## RUSSIA.

Rectangle containing three Russian words at right, arms at left, between these are two Russian words, 41 mm. long, with period after last word, four lines of instruction at foot, frame of engine-turned pattern.

1. 1872. No value, black on white.



Three Russian words in centre in two lines, arms at left, stamp at right. Frame different from No. 1, with ornaments in corners.

2. 1872. 3 KO brown on white.
  - A. Period at end of Par. 1 is under o.
  - B. Period is to the right of o.
3. 1872. 5 KO green on white.
  - A. Period at end of Par. 2 is under B of BO.
  - B. Period at end of Par. 2 is under o of BO.
4. 1875. 4 KO green on white.
  - A. With period after instruction at side. In Par. 1 the fifth letter of the second word is to the left of the last letter of the word below.
  - B. With period. In Par. 1 the fifth letter of the second word is over the last letter of the word below, and the fifth letter of the third word is over the first letter of the last word in Par. 1.
  - C. With period. In Par. 1 the fifth letter of the second word is over the last letter of the word below, and the fifth letter of third word is to the right of the first letter of the last word in Par. 1.
  - D. Without period after instruction at side.

---

Two Russian words in centre 66 mm. long, no period after last word, frame same as No. 2, rectangle in upper right corner.

5. 1875. No value, black on white.

---

Two Russian words in centre 66 mm. long, with period after last word, frame of plain double lines, with ornaments in corners. Two paras. of instructions at foot.

6. 1879. 3 KO black on buff.

---

Similar to No. 6, but without stamp, and with three paragraphs of instructions at foot.

7. 1880. No value, black on buff.

---

Two Russian words in centre 55 mm. long, no frame. Three paras. at foot, arms at left, rectangle at right.

8. 1884. No value, brown on white.

---

Two Russian words in centre 58 mm. long, no frame. Two paras. at foot.

9. 1884. 3 KO rose on buff.

Three lines of inscription at top, no frame. One line of instruction at foot.

10. 1886. 3 KO rose on buff.
11. 1886. 3 x 3 KO rose on buff. T 3.
12. 1889. 4 KO carmine on buff.
13. 1889. 4 x 4 KO carmine on buff. T 3.

---

Similar to No. 9, but larger card, 142 x 89 mm., and only one line at foot.

14. 1889. 3 KO carmine on buff.
15. 1889. 3 x 3 KO carmine on buff. T 3.

### SAN MARINO.

CARTOLINA POSTALE at top, value below over arms, stamp at left with head of female bearing a crown of a stone wall with three towers.

1. 1882. 10 c. blue on blue card.
2. 1882. 15 x 0 c. blue on blue card. T 4.

### SERVIA.

Servian inscription in one line at top, stamp with head of Prince Milan and figures of value at sides, key pattern frame.

1. 1873. 10 p. lilac on buff.
  - A. With 58 ornaments in frame at side.
  - B. With only 54 ornaments.
2. 1873. 10 x 10 p. lilac on buff. T 4.
  - A. Word below arms on reply card 21 mm. long.
  - B. Same word 16 mm. long.

---

Same as above on different colored card.

3. 1876. 10 p. blue on rose cards.
  - A. Arms under the perpendicular stroke of J.
  - B. Arms under the curve of J.
4. 1876. 10 x 10 p. blue on rose. T 4. This card is simply Nos. 3 A and 3 B unsevered.

---

Above cards surcharged BOJEHA POSTA in an oblong frame.

5. 1880. 10 p. lilac on buff.

A. Same as 1 A.

B. Same as 1 B.

6. 1880. 10 p. blue on rose.

A. Same as 3 A.

B. Same as 3 B.

7. 1880. 10 x 10 p. lilac on buff, Nos. 5 A and 5 B unsevered.

8. 1880. 10 x 10 p. blue on rose, Nos. 6 A and 6 B unsevered.

Servian inscription of two words in one line at top, arms below are dated 1389-1815, stamp at right.

9. 1881. 5 p. brown on rose.

A. Stamp is 17 mm. below frame.

B. Stamp is 14 mm. below frame.

10. 1881. 5 x 5 p. brown on rose. T 3.

SERBIE-UNION POSTALE UNIVERSELLE-CARTE POSTALE  
at top, arms in upper left corner, dated as in No. 9.

11. 1881. 10 p. lilac on buff.

12. 1881. 10 x 10 p. brown on buff. T 3.

Similar to No. 9, but arms has double-headed eagle in centre, and bottom of shield nearly straight.

13. 1883. 5 p. brown on rose.

14. 1883. 5 x 5 p. brown on rose. T 3.

Similar to Nos. 11 and 9, but arms have shield encircled by a wreath.

15. 1883. 10 p. lilac on thin straw card.

16. 1883. 10 x 10 p. brown on buff cards. T 3.

A. On stiff card.

B. On thin card.

17. 1883. 5 x 5 p. blue on dark rose card. T 3.

Similar to No. 13, but arms are curved at the bottom.

18. 1884. 5 p. brown on rose.

Similar to No. 18, but figures of value in the stamp are only  $2\frac{1}{2}$  mm. high.

19. 1884. 5 p. brown on pale rose card.

20. 1884. 5 x 5 p. brown on pale rose card. T 3.

Inscription same as in No. 11, arms not dated, figures of value in stamp,  $2\frac{1}{2}$  mm. high.

21. 1885. 10 p. brown on buff.

- A. Second line curved, third line of inscription 47 mm. long.
  - B. Second line curved, third line of inscription 41½ mm. long.
  - 22. 1885. 10 x 10 p. brown on buff. T 3.
  - 23. 1885. 10 p. brown on buff, second line straight.
- 

Similar to previous cards, but arms have shield pointed at bottom, and top line of inscription in very large letters, frame same design as before.

- 24. 1886. 5 p. brown on rose.
    - A. Top line of inscription begins 18½ mm. from inner line of left frame and 4 mm. below inner line of top frame.
    - B. Same as A, but top line is 5½ mm. below top frame.
    - C. Top line of inscription begins 20½ mm. from inner line of left frame.
    - D. Top line 22 mm. from inner line of left frame.
  - 25. 1886. 10 x 10 p. brown on yellow. T 3. REPONSE PAVEE on original card.
    - A. Brown frames on both cards.
    - B. Gray frames on both cards.
    - C. Brown frame on original, gray frame on reply.
    - D. Gray frame on original, brown frame on reply.
  - 26. 1886. 10 x 10 p. brown on yellow, T 3. REPONS PAVEE on original card.
    - A. Same as 29 A, on bright yellow card.
    - B. Same as 29 B.
    - C. Same as 29 C.
    - D. Same as 29 D.
    - E. Same as 29 A, on pale yellow card.
- 

Servian inscription at top in letters 5 mm. high, similar to No. 24, but frame is like that of the Holland cards, square ornaments in corners of frame.

- 27. 1888. 5 p. brown on smooth rose cards.
  - A. Inscription at top begins 16 mm. from inner line of left frame.
  - B. Inscription at top begins 21 mm. from inner line of left frame.

## SOUTH BULGARIA.

Cards of Eastern Roumelia (1881 issue), with adhesive stamp in upper right corner, surcharged with Lion in blue.

1. 1885. 5 p. olive and black stamp.
2. 1885. 5 p. violet stamp.
3. 1885. 10 p. green stamp.
4. 1885. 20 p. rose and black stamp.
5. 1885. 20 p. rose stamp.

---

Same as above, but stamp surcharged with Lion in an octagon frame in black.

6. 1885. 5 p. violet stamp.
7. 1885. 10 p. green stamp.
8. 1885. 20 p. rose and black stamp.
9. 1885. 20 p. rose stamp.

## SPAIN.

REPUBLICA ESPANOLA at top in curve, with stamp in centre, stamp and frame in color, inscription in black.

1. 1873. 5 c. blue on white, two dotted lines for address.
  - A. TARGETA under stamp, no period after ESPANOLA.
  - B. TARJETA under stamp, period after ESPANOLA.
2. 1873. 5 c. blue on white, three dotted lines for address,
  - TARJETA under stamp, no period after ESPANOLA.
  - A. DIRECCION correct.
  - B. With accent between the two C's of DIRECCION.
3. 1873. 5 x 5 c. green on white, T 4. TARGETA under stamp, with head on first half.
  - A. A green line separates the two cards, no period after ESPANOLA.
  - B. The green line omitted, no period after ESPANOLA.
  - C. Error with TARGETA DE IDA and TARGETA DE VUELTA on the wrong halves respectively.
4. 1873. 5 x 5 c. green on white, T 4, TARJETA under stamp.
  - A. Same as 3 A.
  - B. Same as 3 B.
  - C. Green line separates the cards, period after ESPANOLA.

D. Green line omitted, period after ESPANOLA.

ESPANA in centre, head of Alfonso XII. in oval at left, arms in oval at right, inscription black, frame, &c., orange red.

5. 1875. 5 c. de peseta, orange and black on white.

Stamp with arms in centre, TARJETA at left, POSTAL at right, double-lined frame, ornaments in corners.

6. 1875. 5 c. lilac on buff cards.  
 A. On unglazed card.  
 B. On thin greenish buff glazed card.  
 C. On thick greenish buff glazed card.

Similar to last, but stamp has head of King Alfonso facing right.

7. 1875. 5 c. blue on buff cards.  
 A. Note at foot 92 mm. long, periods after SR and D.  
 B. Note 92 mm. long, no period after SR.  
 C. Note 91 mm. long, periods after SR and D.  
 D. Note 90½ mm. long, no period after D.

Similar to last, but stamp has head of Alfonso facing left, with CORREOS Y TELEG<sup>POS</sup> in circle in stamp.

8. 1882. 10 c. lilac on buff cards.  
 A. R of SR has round end, note at foot, 91 mm. long, on pale buff card.  
 B. Same as A, but on dark buff card.  
 C. Same as A, but no period after REMITENTE at foot.  
 D. R of SR has curved end, note at foot 89 mm. long.  
 E. Same as D, but s of SR broken at top.  
 F. Same as D, O of NOTA large, no periods after SR and D.  
 G. R of SR has curved end, note at foot 88 mm. long, two periods after REMITENTE.
9. 1882. 15 x 15 c. green on buff. T 4.  
 A. With period after REMITENTE.  
 B. No period after REMITENTE.

Stamp in upper right corner, no frame.

10. 1884. 5 c. green on buff.  
 A. On pale buff.  
 B. On dark buff.

11. 1884. 10 c. red on buff.
12. 1884. 15 c. brown on buff.
13. 1884. 5 x 5 c. green on buff. T 4.
14. 1884. 10 x 10 c. red on buff. T 4.
  - A. Period after RESPUESTA is on the line.
  - B. Period after RESPUESTA is below the line.
15. 1884. 15 x 15 c. brown on buff. T 4.

## SWEDEN.

Embossed stamp in upper right corner, BREFKORT in centre. Inscriptions and frame in lilac, white cards, 122 x 85 mm.

1. 1872. 12 ore blue.
  - A. The two circles in upper right corner of frame touch each other.
  - B. The two circles do not touch each other.
2. 1873. 6 ore lilac.
  - A. DENNA SIDA, &c., 56 mm. long, B of BOSTAD short tail, heavy ruled line stops 2 mm. short of the fourth dotted line.
  - B. DENNA SIDA, &c., 56 mm., B of BOSTAD long tail, circles in upper right corner of frame same as 1 A.
  - C. Same as 2 B, but circles in upper right corner of frame same as 1 B.
  - D. DENNA SIDA, &c., 48 mm., bright lilac stamp and frame.
  - E. Same as D, with bright lilac stamp and pale lilac frame.
  - F. Same as D, with pale lilac stamp and blue lilac frame.
  - G. Similar to D, with pale lilac stamp and frame, and with four diamonds after E of SEX in stamp.
3. 1873. 10 ore carmine.
  - A. Same as 2 A.
  - B. Same as 2 B.
  - C. Same as 2 C.
  - D. Same as 2 E.
4. 1873. 6 x 6 ore lilac. L 3.
  - A. Same as 2 D on original, 2 B on reply.
  - B. Both cards are same as 2 D.

5. 1873. 10 x 10 ore carmine, L 3. Same as 3 D on original, 3 B on reply.

---

Similar to above, but without stamp.

6. 1878. No value, white cards, inscription and frame in color.
- A. Lilac. Tail of B of BOSTAD is short.
  - B. Lilac. Tail of B of BOSTAD is long.
  - C. Green, same as 6 B.
  - D. Red, same as 6 B.

---

UNION POSTALE UNIVERSELLE at top in the frame, below is SUEDE-BREFKORT in two lines, stamp, not embossed, card 149 x 90 mm.

7. 1879. 10 ore carmine.  
8. 1879. 15 ore green.

---

Same as No. 1, but stamp not embossed, card larger, 140 x 90 mm.

9. 1881. 6 ore mauve, DENNA SIDA, &c., 52 mm. long.  
10. 1882. 6 ore violet.
- A. DENNA SIDA 52 mm. long.
  - B. DENNA SIDA 49 mm. long.
11. 1883. 6 x 6 ore violet. L 3.

---

Same as Nos. 7 and 8.

12. 1883. 10 x 10 ore carmine on white. T 3.
- A. Period after SVARET in upper left corner.
  - B. No period after SVARET.
  - C. Same as 12 A, but no accent over first E of RESPONSE on reply card.
13. 1883. 15 x 15 ore green on white. T 3.
- A. Same as 12 A.
  - B. Same as 12 B.

---

Same as cards No. 9 and 10.

14. 1885. 5 ore green.  
15. 1885. 5 x 5 ore green, L 3. Third line reads SVARET BETALDT.

---

Cards 10 and 11 surcharged in large circular blue stamp over old stamp "5," with inscription KONGL SVENSKA POSTVERKET-FEMORE.

16. 1885. 5 ore on 6 ore blue and violet.



17. 1885. 5 x 5 ore on 6 x 6 ore blue and violet. L 3.

---

Five lines of inscription in centre, SVERIGE-SUEDE in frame at top, frame composed of post-horns and crown.

18. 1889. 10 ore carmine on white.  
19. 1889. 15 x 15 ore green on white. T 3.

---

Similar to No. 15, but second line reads MED. BETALT SVAR, third line reads DENNA SIDA, &c.

20. 1889. 5 x 5 ore green on white. L 3.  
A. Frame correct.  
B. Break in interior line of right frame 6 mm. from upper corner.

### SWEDEN.—LETTER CARDS.

KORTBREF in centre, arms at left, stamp, with large numeral at right.

1. 1889. 5 ore green on blue card.  
2. 1889. 10 ore carmine on blue card.

### SWEDEN.—OFFICIAL CARDS.

POSTKORT in centre, P. S. in large letters in upper left corner, circle in upper right corner.

1. 1874. No value, black on white, frame 135 x 69 mm.  
2. 1882. No value, black on white, frame 125 x 75 mm.

---

TJENSTEBREFKORT at top, arms at left, stamp, with post-horns inclosing figure of value at right.

3. 1874. 6 ore brown.  
4. 1874. 10 ore red.  
5. 1882. 6 ore lilac.  
6. 1885. 5 ore green.

---

Cards Nos. 3 and 5 surcharged like Nos. 16 and 17, regular issue.

7. 1885. 5 ore on 6 ore brown.  
8. 1885. 5 ore on 6 ore lilac (shades).  
A. Bright lilac.  
B. Rose lilac.  
C. Brownish lilac.

---

JERNVAGS-BREFKORT in centre, circular stamp at right, with three crowns in centre.

9. 1887. No value, blue on white.

## SWITZERLAND.

CARTE-CORRESPONDANCE at top, dotted circle at right,  
stamp at left with dove and cross, fancy frame.

1. 1870. 5 c. vermilion on white.
  - A. No dash under CARTE-CORRESPONDANCE.
  - B. Dash is under ESP of CORRESPONDANCE.
  - C. Dash is under RESP, no period after ISCRITTO.
  - D. Dash is under RESP, period after ISCRITTO, second I of ISCRITTO dotted.
  - E. Same as D, but second I of ISCRITTO not dotted.
  - F. Dash is under RES, no period after ISCRITTO, second I not dotted.
2. 1870. 5 c. rose on white.
  - A. Same as 1 A.
  - B. Same as 1 B.
  - C. Same as 1 C, but second I of ISCRITTO dotted.
  - D. Same as 1 C, but second I not dotted.
  - E. Same as 1 D.
  - F. Dash is under RES, period after ISCRITTO, wavy line begins at top of a wave.
  - G. Same as F, but wavy line begins at bottom of a wave.

---

Similar to last, but stamp has dove omitted and large numeral in centre, frame different.

3. 1873. 5 c. rose on white.
  - A. Fifth line at top ends CAZIONE.
  - B. Fifth line at top ends CAZIONI.
  - C. Same as B, but no dot over the last I.
4. 1873. 5 c. brown on white.
  - A. With accents over third E of RESERVE.
  - B. No accent over the third E.
5. 1873. 5 c. red brown on white.
  - A. Same as 4 A.
  - B. Same as 4 B.

---

CARTE-CORRESPONDANCE in large letters at top 74 mm.  
long, frame chain pattern. IN—A—A before third line  
for address.

6. 1874. 10 c. vermilion on white.
-

Same as No. 6, but frame composed of a ribbon entwined around a bar. IN.—A—A before third line.

7. 1874. 5 c. brown on white.
  8. 1874. 5 x 5 c. brown on white. T 4.
- 

Same as No. 6, but without IN—A—A before third line.

9. 1875. 10 c. vermilion on white.
- 

Same as No. 7, but without IN—A—A before third line.

10. 1875. 5 c. brown on white.
- 

Same as Nos. 9 and 10, but without frame.

11. 1875. 5 c. brown on white.
    - A. P of CORRESPONDANCE is over IN.
    - B. P is over ND.
    - C. P is over I.
    - D. P is over N.
  12. 1875. 10 c. vermilion on white.
    - A. P is over IN.
    - B. P is over ND.
    - C. P is over DI.
    - D. P is over N.
- 

POSTKARTE at top, no frame, stamp at left.

13. 1879. 5 c. black on buff.
    - A. POSTKARTE thin letters.
    - B. POSTKARTE thick letters.
  14. 1879. 5 x 5 c. black on buff. T 4.
    - A. Round period after ANTWORT.
    - B. Square period after ANTWORT.
  15. 1883. 5 x 5 c. black on buff. T 3.
    - A. Same as 14 A.
    - B. Same as 14 B.
- 

CARTE POSTALE at top over WELTPOSTVEREIN, no frame.

16. 1879. 10 c. maroon on buff.
  - A. Round period after SCHWEIZ. P of POSTALE is over S of WELTPOSTVEREIN, and second T of WELTPOSTVEREIN is over I of SCHWEIZ.
  - B. Round period after SCHWEIZ, P of POSTALE is over S, and second T of WELTPOSTVEREIN is between the I and Z.

C. Round period after SCHWEIZ, P of POSTALE is between the O and S, and T of WELTPOSTVEREIN is between the I and Z.

D. Square period after SCHWEIZ, P of POSTALE is between O and S.

E. Square period after SCHWEIZ, P of POSTALE is over S.

F. Square period after SCHWEIZ, P of POSTALE is between S and T.

17. 1879. 10 x 10 c. maroon on buff. T 4.

18. 1883. 10 x 10 c. maroon on buff. T 3.

---

Same as cards above, with additional inscription in German in centre, French at left and Italian at right.

19. 1888. 5 c. black on buff.

20. 1888. 5 x 5 c. black on buff. T 3.

21. 1888. 10 c. maroon on buff.

22. 1888. 10 x 10 c. maroon on buff. T 3.

## TURKEY.

ADMINISTRATION DES POSTES J OTTOMANES at top, 108 mm. long, frame of three lines, the centre line being thick, 135 x 92 mm.

1. 1875. No value, black on white.

---

Similar to last, but frame is 123 x 87 mm.

2. 1877. 20 p. lilac on white.

---

UNION POSTALE UNIVERSELLE TURQUIE at top in two lines, frame of two parallel lines, with twisted ribbon in side.

3. 1880. 20 p. black and rose on white.

4. 1880. 20 x 20 p. black and rose on white. T 4.

5. 1881. 20 p. black and rose on buff.

6. 1881. 20 x 20 p. black and rose on buff. T 4.

7. 1884. 20 p. carmine on buff.

8. 1885. 20 x 20 p. carmine on buff. T 4.

---

Card No. 6 separated and sold by the Government as single cards.

9. 1887. 20 p. black and rose on buff, first half.

10. 1887. 20 p. black and rose on buff, second half.

# **TURKEY.—LOCALS FOR CONSTANTINOPLE.**

Card No. 1 of regular issue, with adhesive stamp attached surcharged of Turkish character in dotted circle.

1. 1875. 20 p. green stamp.

---

Cards Nos. 5 and 6, regular issue, surcharged with Turkish character (meaning CHEIR) in dotted circle.

FIRST TYPE. 42 dots in circle.

2. 1881. 20 p. black and rose on buff.
  - A. Surcharge in black on No. 5.
  - B. Surcharge in black on first half of No. 6.
  - C. Surcharge in black on second half of No. 6.
  - D. Surcharge in blue on No. 5.
  - E. Surcharge in blue on first half of No. 6.
  - F. Surcharge in blue on second half of No. 6.
  - G. With double surcharge in blue on No. 5.

SECOND TYPE. 45 dots on circle.

3. 1881. 20 p. black and rose on buff.
  - A. Same as 2 A.
  - B. Same as 2 B.
  - C. Same as 2 C.
  - D. Same as 2 D.
  - E. Same as 2 E.
  - F. Same as 2 F.
  - G. Same as 2 G.

THIRD TYPE—CHEIR, and LOCAL in octagon frame.

4. 1881. 20 p. black and rose on buff.
  - A. Surcharge in blue on No. 5.
  - B. Surcharge in blue on first half of No. 6.
  - C. Surcharge in blue on second half of No. 6.
5. 1881. 20 x 20 p. black and rose on buff. T 4.
  - A. Surcharge in black, 45 dots in circle.
  - B. Surcharge in blue, 45 dots in circle.

---

POSTES IMPERIALES OTTOMANES—CARTE POSTALE in two lines at top.

6. 1881. 20 p. black and green on white.
  - A. With 20 p. adhesive attached, not surcharged.
  - B. With stamp surcharged, CHEIR LOCAL in octagon frame in blue.
  - C. Same as B, but surcharge in black.
  - D. Double surcharge in blue, one over stamp and one in upper left corner.

7. 1881. 20 x 20 p. black and green on white. R 4.
    - A. Same as 6 A.
    - B. Same as 6 B.
    - C. Same as 6 C.
    - D. Same as 6 D.
- 

Cards Nos. 7 and 8, regular issue, surcharged CHEIR-LOCAL in octagon frame in blue.

8. 1886. 20 p. carmine on buff.
  - A. Surcharge on No. 7.
  - B. Surcharge on first half of No. 8.
  - C. Surcharge on second half of No. 8.
9. 1886. 20 x 20 p. carmine on buff. T 4.

## WURTEMBERG.

KONIGL WURTTENBERGISCHES POSTGEBIET in curve at top, octagonal stamp embossed at right, six paragraphs at foot, large card, about 165 x 110 mm., inscription in black, stamp in color.

1. 1870. 1 kr. green on blue.
    - A. Figure 2 of Par. 2 is to the left of other figures.
    - B. In Par. 4 E of KARTEN is over W of SOWIE.
    - C. In Par. 4 E of KARTEN is over O of SOWIE.
    - D. In Par. 5 KORRESPONDENZ with a K.
  2. 3 kr. rose on blue.
    - A. Same as 1 A.
    - B. Same as 1 B.
    - C. Same as 1 C.
    - D. Same as 1 D.
- 

Card No. 1 surcharged (VERKEHR IM RAYON DER I KR BRIEFTAXE) under CORRESPONDENZ KARTE, six paras. at foot.

3. 1871. 1 kr. green on blue.
    - A. Same as 1 A.
    - B. Same as 1 B.
    - C. Same as 1 C.
    - D. Same as 1 D.
    - E. Same as 3 C, with a second stamp impression nearly over the first, but not in color.
-

Same as No. 3, but only five paragraphs at foot.

4. 1871. 1 kr. green on blue.

- A. Top of Crown is under ER of WURTTENBERG-  
ISCHES. Vertical line dividing instructions is  
between E and B of GEBRAUCH. In Par. 3 L  
of WELCHE is under HR of IHRER, and in Par.  
4 D of CORRESPONDENZ is over the second A of  
RECOMMANDATION.
- B. Crown under BE. Vertical line under E. In Par.  
3 L is under HR. In Par. 4 D is over A.
- C. Crown under E. Vertical line under E. In Par. 3  
L is under HR. In Par. 4 D is over AT.
- D. Crown under BE. Vertical line under GE. In Par.  
3 L is under the first R of IHRER. In Par. 4 D  
is over D.
- E. Crown under ER. Vertical line under BR. In Par.  
3 L is under the first E. In Par. 4 D is over A.
- F. Crown under BE. Vertical line under E. In Par.  
3 L is under RE. In Par. 4 D is over A.
- G. Crown under B. Vertical line under GE. In Par.  
3 L is under E. In Par. 4 D is over A.
- H. Crown under E. Vertical line under EB. In Par.  
3 L is under E. In Par. 4 D is over DA.
- J. Crown under ER. Vertical line under GE. In Par.  
3 L is under the last R of IHRER. In Par. 4 D  
is over A.

KON WURTTENB (arms) POSTGEBIET in straight line at  
top, octagonal stamp at right, card size of No. 1.

5. 1872. 1 kr. green on blue.

- A. AN at left of first dotted line, four lines for address.
- B. HERRN instead of AN, no lines for address.

KON WURTTENB (arms) POSTGEBIET at top, surcharge as  
in No. 3, large cards.

6. 1872. 1 x 1 kr. green on blue. T 3.

- A. Heavy line under the third dotted line begins  
nearly under the colon on the original, and 3  
mm. from the colon on the reply card.
- B. Heavy line begins 3 mm. from the colon on the  
original, and nearly under the colon on the  
reply.
- C. Heavy line begins 3 mm. from the colon on both  
cards.

7. 1872. 3 x 3 kr. rose on blue, T 3, but without the surcharge as in No. 6.  
 A. Period at end of Par. 1 is over space after UND.  
 B. Period is over D of UND.

KONIGLICH in centre over arms. WURTTTEMB at left, POST-  
 GEBIET at right of arms, no frame, card 140 x 85 mm.,  
 inscription in color.

8. 1872. 1 kr. green on blue, two lines of inscription under  
 POST KARTE.  
 A. KONIGLICH 26 mm., period after KARTE is over R.  
 B. KONIGLICH 26 mm., period after KARTE is over RI.  
 C. KONIGLICH 26 mm., period after KARTE is over I.  
 D. KONIGLICH, 29 mm., period is over RI.
9. 1872. 1 x 1 kr. green on blue, T 3, one line of inscription  
 below POST-KARTE, besides the reply notice of  
 RUCKANTWORT BEZAHLT.  
 A. KONIGLICH 26 mm. on original, 29 mm. on reply.  
 B. KONIGLICH 26 on both cards, on reply top of crown  
 is between N and I.  
 C. Same as B, top of crown between I and G on reply,  
 thick card.  
 D. Same as C, but thin card.  
 E. KONIGLICH, 29 on original, 26 mm. on reply.
10. 1872. 2 kr. orange on blue, no inscription under POST-  
 KARTE.  
 A. KONIGLICH 26 mm., ruled line after IN is 49 mm.  
 long and 2 mm. below the third dotted line, top  
 of crown under I.  
 B. Same as A, but top of crown between I and G.  
 C. KONIGLICH 26 mm., ruled line 49 mm., and but 1  
 mm. below dotted line.  
 D. KONIGLICH 26 mm., ruled line 54 mm. and 1 mm.  
 below dotted line.  
 E. KONIGLICH 29 mm., ruled line 49 mm. and 1 mm.  
 below dotted line.  
 F. Same as E, but ruled line 2 mm. below dotted line.  
 G. KONIGLICH 29 mm., ruled line 54 mm. and 1 mm.  
 below dotted line.
11. 1872. 2 x 2 kr. orange on blue. T 3.  
 A. KONIGLICH 26 mm. on both cards, ruled line 49  
 mm. on both cards.  
 B. KONIGLICH 26 on both cards, ruled line 49 on  
 original, 54 on reply.



## C. KONIGLICH 29 on original, 26 on reply.

Same as above, but with a frame of a chain pattern.

12. 1873. 1 kr. green on blue card, like No. 8.

- A. KONIGLICH 26 mm., AN small,  $4\frac{1}{2}$  mm. long, crown is under I, S of POST-KARTE is over second E of VERKEHR.
- B. KONIGLICH 26 mm., AN  $4\frac{1}{2}$  mm., crown is between N and I, S of POST-KARTE is over H of VERKEHR.
- C. KONIGLICH 26 mm., AN  $4\frac{1}{2}$  mm., crown is between I and G, S of POST-KARTE is over H of VERKEHR.
- D. KONIGLICH 26 mm., AN  $4\frac{1}{2}$  mm., crown is between N and I, S of POST-KARTE is over the second E of VERKEHR.
- E. KONIGLICH 26 mm., AN  $4\frac{1}{2}$  mm., crown is a little to the right of I, S of POST-KARTE is over space between H and R of VERKEHR.
- F. KONIGLICH 26 mm., AN large,  $5\frac{1}{2}$  mm., crown is a little to the left of I, S of POST-KARTE is over H of VERKEHR.
- G. KONIGLICH 26 mm., AN large  $5\frac{1}{2}$  mm., crown between I and G but very close to I, S of POST-KARTE is over space between HR of VERKEHR.
- H. KONIGLICH 26 mm., AN  $5\frac{1}{2}$  mm., crown a little to the right of I, S of POST-KARTE is over right part of H of VERKEHR.
- J. KONIGLICH 26 mm., AN  $5\frac{1}{2}$  mm., crown a little to the right of I, S of POST-KARTE is over left part of H of VERKEHR.
- K. KONIGLICH 26 mm., AN  $5\frac{1}{2}$  mm., crown between I and G, S of POST-KARTE is over space between E and H of VERKEHR. A of ALS is under N.
- L. Same as K, but L of ALS is under N.
- M. KONIGLICH 29 mm., AN  $4\frac{1}{2}$  mm., crown is between I and G.
- N. KONIGLICH 29 mm., AN  $5\frac{1}{2}$  mm., crown between I and G, S of POST-KARTE is over space between E and H.
- O. Same as N, but crown under I, S of POST-KARTE is over the H of VERKEHR.

Same as last, but only one line of instruction under POST-KARTE.

13. 1873. 1 kr. green on blue.

Same as last, but only two lines for address, and **HERRN** instead of **AN**.

14. 1873. 1 kr. green on blue.

Same as No. 12, with chain pattern frame, no instructions under **POST-KARTE**.

15. 1873. 2 kr. orange on blue.

- A. **KONIGLICH** 26 mm., **AN**  $4\frac{1}{2}$  mm., crown between **I** and **G**, but nearly under **I**.
- B. **KONIGLICH** 26 mm., **AN**  $4\frac{1}{2}$  mm., crown between **I** and **G** nearer the **I**.
- C. **KONIGLICH** 26 mm., **AN**  $4\frac{1}{2}$  mm., crown between **N** and **I**.
- D. **KONIGLICH** 26 mm., **AN**  $5\frac{1}{2}$  mm., crown between **I** and **G**.
- E. **KONIGLICH** 26 mm., **AN**  $5\frac{1}{2}$  mm., crown under **I**.
- F. **KONIGLICH** 29 mm., **AN**  $4\frac{1}{2}$  mm., crown between **I** and **G**.
- G. **KONIGLICH** 29 mm., **AN**  $5\frac{1}{2}$  mm., crown between **I** and **G**.

16. 1873. 2 kr. yellow on blue.

- A. **KONIGLICH** 26 mm., **AN**  $5\frac{1}{2}$  mm., crown between **I** and **G**.
- B. Same as A, but crown nearly under **I**.
- C. **KONIGLICH** 29 mm., **AN**  $5\frac{1}{2}$  mm., crown between **I** and **G**.

17. 1873. 2 x 2 kr. orange on blue. T 3.

- A. **KONIGLICH** 26 mm., **AN**  $4\frac{1}{2}$  mm. on both cards, **S** of **POST-KARTE** over **K** on original, crown between **N** and **I** on reply card.
- B. Same as A, **S** of **POST-KARTE** is over **A** on original, crown between **I** and **G** on reply card.
- C. **KONIGLICH** 26 mm., **AN**  $5\frac{1}{2}$  mm. on both cards.
- D. **KONIGLICH** 26 on original, 29 on reply. **AN**  $4\frac{1}{2}$  on both cards.

18. 1874. 2 kr. rose on blue.

- A. **KONIGLICH** 26, crown between **I** and **G**, but nearer the **I**.
- B. Same as A, but crown nearly under the **I**.
- C. **KONIGLICH** 29, crown between **I** and **G**.

**KONIGLICH** at top over arms, **WURTTUMB** at left, **POST-GEBIET** at right of arms, inscription in black, stamp in color, no frame.

19. 1875. 1 kr. black and green on blue, two lines of instruction under POST-KARTE.
- A. KONIGLICH 26 mm., crown between I and G, s of POST-KARTE over centre of H of VERKEHR, R of DER is over E of AUSZERHALB.
  - B. Same as A, but R of DER is over space between E and R.
  - C. KONIGLICH 26 mm., crown between I and G, s of POST is over space between E and H.
  - D. Same as C, but s of POST is over the left part of H.
  - E. Same as C, but s of POST is over the right part of H.
  - F. Same as C, but s of POST is over the left part of the second R.
  - G. KONIGLICH 26 mm., crown between N and I.
  - H. KONIGLICH 29 mm., crown between I and G.
20. 1875. 1 kr. green on blue, only one line under POST-KARTE.
21. 1875. 2 kr. violet on blue, no instructions under POST-KARTE.
- A. KONIGLICH 26 mm., AN tall and thin, crown between I and G.
  - B. Same as A, but crown between N and I.
  - C. KONIGLICH 26 mm., AN short and thick, crown between I and G.
  - D. Same as C, but crown is a very little to the right of I.
  - E. Same as C, but crown between N and I, but near the I.
  - F. KONIGLICH 29 mm., AN tall and thin, crown between I and G.

---

Card No. 13, with one line under POST-KARTE and chain pattern frame, surcharged with violet bar over old stamp and new stamp in upper left corner.

22. 1875. 5 Pfg. on 1 kr. violet and green on blue.
- A. KONIGLICH 26 mm., AN  $4\frac{1}{2}$  mm., crown between I and G, s of POST is over the left part of H.
  - B. Same as A, crown a little to right of I, s of POST over centre of H.
  - C. Same as A, crown a little to right of I, s of POST over space between K and E.
  - D. KONIGLICH 26 mm., AN large,  $5\frac{1}{2}$  mm.
23. 1875. 5 Pfg. on 2 kr. violet and orange on blue.

- A. KONIGLICH 26 mm., AN small,  $4\frac{1}{2}$  mm.
- B. Same as A, but AN large,  $5\frac{1}{2}$  mm.
- 24. 1875. 5 Pfg. on 1 kr. violet and green on blue, HERRN instead of AN.
  - A. KONIGLICH 26 mm., crown between N and I.
  - B. KONIGLICH 26 mm., crown under I.
  - C. KONIGLICH 26 mm., crown between I and G.
  - D. KONIGLICH 29 mm.
- 25. 1875. 5 Pfg. on 2 kr. card No. 21, KONIGLICH 26 mm., violet surcharge.

Cards surcharged DRUCK-SACHE over stamp, and new stamp in upper left corner.

- 26. 1875. 3 Pfg. on 1 kr. green.
  - A. Surcharge on 5 A.
  - B. Surcharge on 12 C.
  - C. Surcharge on 19 B.

K WURTTUMB (arms) POSTGEBIET at top over DRUCK-SACHE, no frame.

- 27. 1875. 3 Pfg. green on blue gray card.
- 28. 1876. 3 Pfg. green on buff card.
  - A. AN is tall and thin.
  - B. AN is short and fat.

KONIGREICH (arms) WURTTEMBERG at top over POST KARTE, no frame. Inscription black, stamp in color.

- 29. 1875. 5 Pfg. lilac on blue card.
  - A. Top line of inscription 63 mm., third dotted line 49 mm., fourth dotted line 81 mm.
  - B. Measurements as above,  $64\frac{1}{2}$ —49—81.
  - C. Measurements as above, 66—54—72.
  - D. Measurements as above, 63—54—72.
  - E. Measurements as above, 64—54—81.
- 30. 1875. 5 x 5 Pfg. lilac on blue. T 3.
  - A. Third dotted line 54 on both cards. Top line of inscription  $66\frac{1}{2}$  mm. on original, 66 on reply.
  - B. Third dotted line 54 on both cards. Top line 65— $65\frac{1}{2}$ .
  - C. Third dotted line 49 on both cards. Top line 64 on both cards.
  - D. Third dotted line 49 on original, 54 on reply. Top line 64— $63\frac{1}{2}$ .

Inscription same as last in black, stamp in color.

31. 1876. 5 Pfg. lilac on buff.

A. KONIGREICH 24 mm. Top line of inscription 66 mm., diamond period after WURTTENBERG. AN small and thin.

B. KONIGREICH 22 mm. Top line 64½ mm., diamond period.

C. KONIGREICH 21 mm. Top line 63 mm., round period, AN small.

D. KONIGREICH 21½ mm. Top line 62½ mm., round period, AN large and fat.

E. KONIGREICH 22 mm. Top line 63½ mm., round period, AN large.

F. KONIGREICH 22 mm. Top line 64 mm., round period, AN large.

G. KONIGREICH 23½ mm. Top line 65 mm., round period, AN small.

H. KONIGREICH 24 mm. Top line 66 mm., round period, AN large.

J. Same as H, but AN small and thin.

32. 1876. 5 x 5 Pfg. lilac on buff. T 3.

A. KONIGREICH 24 mm., and top line 66 on both cards, round period after WURTTENBERG on both cards. ANTWORT on reply 17 mm. long.

B. KONIGREICH 22 and 24. Top line 63 and 66, round periods. ANTWORT 17 mm.

C. KONIGREICH 22 on both cards. Top line 63 and 64, round periods. ANTWORT 17 mm.

D. KONIGREICH 23½ on both cards. Top line 65 and 65½, round periods. ANTWORT 19 mm.

E. KONIGREICH 24 on both cards. Top line 66 on both cards, diamond period. ANTWORT 17 mm.

---

WELTPOSTVEREIN, &c., at top. Inscription in black, frame and stamp in color.

33. 1878. 10 Pfg. carmine on buff.

A. WURTTENBERG in third line.

B. Error WURTTENBEEG.

34. 1879. 10 x 10 Pfg. carmine on buff. T 3.

---

KONIGREICH (arms) WURTTENBERG at top over POST-KARTE, no frame, all in color.

35. 1882. 5 Pfg. lilac on buff. Third dotted line shorter than the fourth dotted line.

- A. Top line of inscription 65 mm. long.
  - B. Top line 68 mm. long.
  - 36. 1883. 5 x 5 Pfg. lilac on buff. T 3.
    - A. Top line 68 mm. on both cards.
    - B. Top line 66 mm. on both cards.
    - C. Top line 65 mm. on both cards.
- 

POSTKARTE—CARTE POSTALE at top, DEUTSCHLAND—  
ALLEMAGNE. WURTEMBERG in frame at top in car-  
mine.

- 37. 1887. 10 Pfg. carmine on buff.
  - 38. 1887. 10 x 10 Pfg. carmine on buff. T 3.
- 

- Inscription same as No. 35, top line of inscription in dif-  
ferent type, diamond period after WURTEMBERG.  
The third and fourth dotted lines are the same length.
- 39. 1888. 5 Pfg. lilac on buff.

#### WURTEMBERG.—OFFICIAL CARDS.

Card No. 12 surcharged as below.

- 1. 1876. 1 kr. green, chain pattern frame.
  - A. Surcharge with circle (40 mm. in diameter) contain-  
ing arms and KON WURTT POSTDIRECTION  
over stamp. In lower left corner POST-DIENST-  
SACHE, in centre K. POSTAMT.
  - B. Same as A, but K. POST-ANSTALT in centre.
  - C. Same as A, but K. POST- in centre.
  - D. Same as A, but KONIGL POSTAMT in centre.
  - E. Surcharge with oval containing arms and K WURT-  
TEMB POSTDIRECTION over stamp, POST-  
DIENST-SACHE in left corner and K. POST in  
centre.
  - F. Same as E, but K. POST-ANSTALT in centre.
  - G. Same as E, but K POSTAMT in centre. s of POST-  
KARTE is over space between E and H of VER-  
KEHR.
  - H. Same as G, but s of POST is over right part of H of  
VERKEHR, and R of DER is over E of AUSZER-  
HALD.
  - J. Same as H, but R of DER is over space between E  
and R.

K. Surcharge with circle (44 mm. in diameter) containing arms and DRUCKMATERIAL-VERWALTUNG FUR DIE K W VERKEHRS-ANSTALTEN. In left corner DIENST-SACHE and KONIGL in centre.

L. Same as K, but K. EISENBAHN in centre.

M. Surcharge with circle (31 mm. in diameter) containing arms and GENERAL DIREKTION-DER K WURTT POSTEN U. TELEGRAPHEN. In left corner POSTSACHE and K POSTAMT.

Card No. 15 surcharged.

2. 1876. 2 kr. orange, chain pattern frame.

A. Surcharge, &c., same as 1 B.

B. Surcharge, &c., same as 1 C.

C. Surcharge, &c., same as 1 D.

D. Same as 1 A, but POST ANSTALT in centre.

E. Surcharge, &c., same as 1 E.

F. Surcharge, &c., same as 1 K.

Card No. 8 surcharged.

3. 1876. 1 kr. green, no frame, inscription same color as stamp. Surcharge, &c., same as 1 G.

Card No. 10 surcharged.

4. 1876. 2 kr. orange, no frame, inscription same color as stamp.

A. Surcharge, &c., same as 1 D.

B. Surcharge, &c., same as 1 K.

Card No. 18 surcharged.

5. 1876. 2 kr. rose, frame chain pattern.

A. Surcharge, &c., same as 1 B.

B. Surcharge, &c., same as 1 C.

C. Surcharge, &c., same as 1 D.

D. Surcharge, &c., same as 1 K.

Card No. 19 surcharged, no frame, stamp in color, inscription in black.

6. 1876. 1 kr. green.

A. Surcharge same as 1 A, crown under space between N and I of KONIGLICH.

B. Same as 6 A, but crown between I and G, but very close to the I.

- C. Surcharge same as 1 B.
- D. Surcharge same as 1 C.
- E. Surcharge same as 1 D.
- F. Same as above, but no surcharge in centre of card.
- G. Surcharge over stamp same as 1 A, POST SACHE in left corner, K POSTAMT in centre.
- H. Surcharge same as 1 E, but KONIGL. POST in centre, crown between N and I.
- J. Same as H, but crown between I and G. S of POST-KARTE is over H of VERKEHR.
- K. Same as J, but S of POST is over second R.
- L. Surcharge same as 1 G, crown between N and I.
- M. Same as L, but crown between I and G.
- N. Surcharge same as 1 F.
- O. Surcharge same as 1 E, S of POST-KARTE is over H.
- P. Same as O, but S is over space between E and H.
- Q. Surcharge same as 1 E, but KONIGL POSTAMT in centre.
- R. Surcharge same as 1 K, crown between I and G.
- S. Same as R, but crown between N and I.
- T. Surcharge same as 1 K, but KONIGL POSTAGENTUR in centre.
- U. Surcharge same as 1 K, but POSTAMT in centre.
- V. Surcharge same as 1 M.
- W. Surcharge with circle (31 mm. in diameter) containing arms and DRUCKEREI—DER K. W. VERKEHRSANSTALTEN. In left corner DIENSTSACHE and in centre KONIGL.

Card No. 21 surcharged, no frame.

- 7. 1876. 2 kr. violet.
  - A. Surcharge same as 1 C.
  - B. Surcharge same as 1 D.
  - C. Surcharge same as 1 K.

KONIGREICH (arms) WURTTEMBERG at top over POST-KARTE, stamp inscribed diagonally AMTLICHER VERKEHR. Inscription and stamp in same color.

- 8. 1883. 5 Pfg. lilac on buff.
  - A. AN large, 5 mm.
  - B. AN small, 4 mm.



## ERRORS, &c.

---

Please make the following changes and additions in the foregoing pages:

- Page 10, line 35, COLOR should be COLON.
- " 13, " 20, 3 SOLDI should be 4 SOLDI.
- " 17, " 1, add LINE 6 after PAR 1.
- " 21, " 12, THICKLY should be THINLY.
- " 28, " 13 and 20, NO. 24 should be NO. 1.
- " 28, " 18, NO. 25 should be NO. 2.
- " 41, " 13, PRIX 10 CEN should be PRIX 15 CEN.
- " 43, " 39, the 8 of 1846 should be reversed, instead of the 8 of 1877.
- " 46, " 10, add T 3 after ROSE ON BUFF.
- " 51, " 6, add OF UND after PAR. 3 D.
- " 51, " 25, TO THE RIGHT should be TO THE LEFT.
- " 51, " 33, AN 31 MM. should be AN 35½ MM.
- " 67, " 13, should read MAGY. KIR. POSTA— KR. UG. POSTA, &c.
- " 91, " 33, should read SIMILAR TO 4 B, but SR NOT IN ITALICS.
- " 96, " 11, the letter C should be B.

# INDEX.

---

	PAGES
Alsace and Lorraine, .....	7
Austria, .....	7-8
"    Bohemian Provinces, .....	9
"    Illyrian Provinces, .....	10
"    Italian Provinces, .....	10-11
"    Polish Provinces, .....	11
"    Roumanian Provinces, .....	11-12
"    Ruthenian Provinces, .....	12
"    Slovenian Provinces, .....	12-13
"    Foreign Offices, .....	13-14
"    Letter Cards, .....	14
"    Pneumatic Cards, .....	14-15
"    Pneumatic Letter Cards, .....	15
Baden, .....	15-16
Bavaria, .....	16-26
Belgium, .....	26-27
"    Letter Cards, .....	27-28
"    Letter Envelope, .....	28
Bosnia, .....	28
"    Letter Cards, .....	28
Bulgaria, .....	29
Denmark, .....	29-32
"    Letter Cards, .....	32
"    Official Cards, .....	32
"    Locals, .....	33
"    Local Letter Cards, .....	33-34
Eastern Roumelia, .....	34-35
Finland, .....	35-38
"    Helsingfors, .....	38
France, Private Issues, .....	39
"    Government Issues, .....	40-44
"    Letter Cards, .....	44-45
"    Balloon Cards, .....	45
"    Balloon Letter Sheets, .....	45-46
"    Pneumatic Cards, .....	46-47
"    Pneumatic Letter Cards, .....	47

	PAGES
German Empire, .....	47-57
"    "    Pneumatic Cards, .....	57
Gibraltar, .....	57-58
Great Britain, .....	58-61
"    "    Telegraph Cards, .....	61
Greece, .....	61
Heligoland, .....	61-63
Holland, .....	63-65
"    Letter Sheet, .....	65
Hungary, .....	65-67
"    Letter Cards, .....	67-68
"    Telegraph Card, .....	68
Iceland, .....	68
Italy, .....	69-70
"    Letter Cards, .....	70
"    Official Cards, .....	70
Luxemburg, .....	71-79
Malta, .....	79
Monaco, .....	79
"    Letter Cards, .....	79
Montenegro, .....	80
North German Confederation, .....	80-82
Norway, .....	82-89
"    Local Cards, .....	90
Portugal, .....	90-92
"    Letter Cards, .....	92
Roumania, .....	92-96
Russia, .....	96-98
San Marino, .....	98
Servia, .....	98-100
South Bulgaria, .....	101
Spain, .....	101-103
Sweden, .....	103-105
"    Letter Cards, .....	105
"    Official Cards, .....	105
Switzerland, .....	106-108
Turkey, .....	108
"    Locals for Constantinople, .....	109-110
Wurtemberg, .....	110-118
"    Official Cards, .....	118-120
Errors, &c., .....	121

# U. S. ENCASED POSTAGE STAMPS,

IN METALLIC FRAMES,

USED AS CURRENCY 1862-64,

## WANTED

BY

CHARLES GREGORY,

*1 New Street,*

NEW YORK.

I wish to Buy for Cash or Exchange Duplicates with other Collectors, and will be pleased to correspond with any one having them for Sale or Exchange. Will give Postage or Revenue Stamps in Exchange if preferred. Also  
Wanted — Mexican  
Revenue Stamps.

---

## WATSON BROTHERS, BANKERS & BROKERS,

36 BROAD ST.,

NEW YORK CITY.

---

Stocks, Bonds and Miscellaneous Securities

Bought and Sold for Cash

or on Margin.

---

GEORGE H. WATSON,

Member N. Y. Stock Exchange.

ARCHD. A. WATSON.

# THE POST CARD.

---

A SMALL LEAFLET,

DEVOTED TO

## COLLECTORS OF POST CARDS

—AND—

## LETTER CARDS,

*Published every Month, or oftener if possible.*

---

This is the only sheet in the world which is entirely given up to Cards. Every Dealer and Collector should subscribe to THE POST CARD whether they deal in Cards or not.

---

Subscription 15 cents per year, in advance, to all parts of the U. S. and Canada.

Address

"THE POST CARD,"

ROSELLE,

(Box 85.)

NEW JERSEY.

A. P. A. 353.

C. P. A. 35.

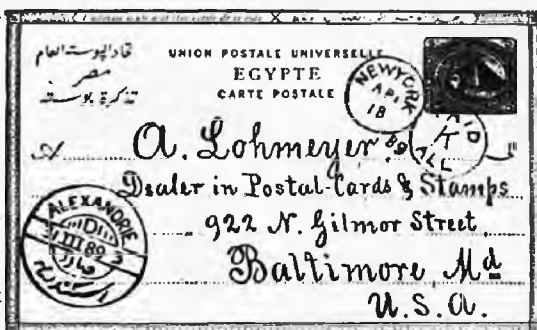
A large line of

## POSTAL CARDS

Always in Stock

Price List 5 cts.

Nederl. Ver. 202.



Choice Selections of

## POSTAGE STAMPS

Sent on approval to

RESPONSIBLE  
COLLECTORS.

N. S. D. A. 17.

C. P. S. 169.

## CARD PACKETS.

**No. 1** contains 20 varieties of used Cards from Austria, Bohemia, Hungary, Belgium, Bavaria, Germany, Canada 1871, Holland, Italy, Japan, Great Britain, Russia, Switzerland and France.

**Price, Postpaid, 30 Cents.**

**No. 2** contains 12 varieties of used Cards and Letter Cards, superior to No. 1, from Austria 1869, and Letter Cards 1886; Hungary 1871, and Letter Card 1887; Belgium Letter Cards, Switzerland first issues, Newfoundland and Great Britain.

**Price, Postpaid, 25 Cents.**

**No. 3** contains 6 varieties of unused single and double Cards from Germany, Newfoundland 2 c., Switzerland, Belgium 10 c. and Wurttemberg.

**Price, Postpaid, 25 Cents.**

**No. 4** contains 8 varieties of unused Austrian 1880 double Cards.

**Price, Postpaid, 45 Cents.**

**No. 5** contains 8 varieties of unused Austrian 1883 double Cards.

**Price, Postpaid, 40 Cents.**

**No. 6** contains 8 varieties of unused Denmark 1888 3 to 10 ore, single, double and official.

**Price, Postpaid, 40 Cents.**

**No. 7** contains 15 varieties of unused Cards, single and double, from Canada, 2 c., 2 varieties, Colombia, Great Britain, Hungary, Hawaii, Mexico, Newfoundland 2 c., Portugal, Russia, 3 and 3, Sweden prov. and 10 ore.

Denmark Letter Cards, 2 varieties.

**Price, Postpaid, 75 Cents.**

THE  
J. W. SCOTT CO.,  
LIMITED,  
163 Fulton Street,  
NEW YORK.

---

*The above Corporation is under the direct management of Mr. J. W. Scott, for nearly 30 years identified with all that is good in Philately.*

*Mr. Scott is not connected with any other company either as expert or cataloguer.*

*We make a Specialty of Rare Stamps, all sold by us being authenticated by the signature of Mr. J. W. Scott. No other firm can give this valuable guarantee.*

*Sheets of rare or common stamps sent on approval to responsible parties.*

*Complete Illustrated Catalogue, 25 c.*

*24 page Circulars **FREE**.*

*A large and valuable Collection of Coins for Sale, all marked at very low prices.*

*Highest price paid for Coins or Stamps in any quantities.*

Established August, 1887.

---

# MILLARD F. WALTON,

WHOLESALE AND RETAIL DEALER IN

## FOREIGN AND U. S. POSTAGE STAMPS

### FOR COLLECTIONS.

---

My stock of Foreign Stamps is unsurpassed. I can supply you with all kinds of U. S. Postage Stamps on or off Envelope. Have Letter Sheets used before the existence of Postage Stamps. Have in stock Match, Medicine, Revenues, Perforated and Unperforated. California and Maryland State Revenues and other rarities. Confederate States on and off Envelope, Locals and most everything in the Philatelic line.

I will pay good prices for U. S. Stamps on or off Envelope, Locals, Unperforated Revenues, Confederates on Envelopes, or anything good in the Stamp line.

Collections bought and sold.

Send for my buying prices of U. S. Stamps.

Correspondence with dealers and collectors all over the world solicited.

I want Agents to sell Stamps from my Sheets. Send good reference and 2 c. stamp and receive by return mail an excellent Sheet of stamps on approval at 33½ per cent. discount. Books for advanced collectors at 25 per cent. discount. I have catalogued my stock of U. S. Stamps of all kinds and will send a catalogue upon receipt of 6 c. in stamps to cover cost of printing and postage. You will find it to your interest to do so.

## MILLARD F. WALTON,

Lock Box 38,  
Philadelphia, Pa.

Secretary N. S. D. A.  
A. P. A. No. 415.





R. R. BOGERT & CO.,  
TRIBUNE BLDG, N. Y.  
**POSTAGE STAMPS**  
Revenue Stamps  
ENVELOPES & POST-CARDS

WHOLESALE AND RETAIL DEALERS

IN ALL KINDS OF

STAMPS, ENVELOPES, POST CARDS, ETC.


---

New Priced


## CATALOGUE OF POST CARDS

*Now Ready. Price 25 cents.*

---

 *Collectors desiring to sell at auction will do well to communicate with us. Our charges are reasonable, our Auctions are the best attended, and the prices obtained the highest.*

*We are constantly receiving new issues and rare stamps, which we will send on approval to collectors desiring them, provided a deposit or satisfactory reference is furnished.*

 *Correspondence desired with advanced collectors, also with dealers and collectors abroad, especially in Asia, Africa and Oceanica.*

*New list of United States stamps sent on application.*

---

**R. R. BOGERT & CO.,**

**Room 37, Tribune Building.**

**NEW YORK.**

New York, March 11, 1891.

Dear Sir:

*I send you herewith the first part of a new Post Card and Letter Card Catalogue, that I have been at work on since I discontinued my little paper, "The Post Card," last December.*

*I have done my best to give, as accurately as possible, a description of all cards that have come under my notice, and only hope my descriptions will be understood.*

*I invite criticism from all philatelists in the hope that something will turn up whereby this list can be improved upon. A supplement will be issued with the last part, which will contain a list of new cards issued since the previous parts went to press, and also anything that will be of interest to collectors. If you have any suggestions to make, I would be pleased to hear from you.*

*To give you some idea of the time and labor (of love, of course) that I have given to preparing this work, I would say that I spent three evenings of four hours each in cataloguing the cards of Bavaria alone. I regret that, owing to the great cost, I could not give the cuts of the various cards, but hope my description is sufficiently plain to enable all to immediately find any card they desire.*

*Some of the cards catalogued I have not got; these I have taken from other lists, while some I have assumed were issued. A list of those I want will be found on the last page of the cover of each part, and I would like to receive any of these on approval, or any regularly issued cards not in this catalogue. I am willing to buy, for cash, at a reasonable price, any cards I have not got.*

*I expect to complete this list in six or seven parts of thirty-two pages each.*

*The price of this Catalogue, complete, is Two Dollars, post-paid to any country in the Postal Union. Twenty-five cents extra to countries not in the Union. There will only be 200 copies printed, and the parts will be issued at intervals of from four to six weeks, or oftener if possible.*

*Very respectfully,*

GEORGE H. WATSON.