

1196

DESCRIPTIVE LIST
OF
INDIAN POSTAGE STAMPS

From 1853,

THE DATE ON WHICH THEY WERE INTRODUCED IN INDIA,

to March 1885.



SIMLA ;
OFFICE OF THE DIRECTOR-GENERAL OF THE POST OFFICE OF INDIA.

1885.

From Taphing Collection

Crawford 1196

DESCRIPTIVE LIST
OF
INDIAN POSTAGE STAMPS

From 1853,

THE DATE ON WHICH THEY WERE INTRODUCED IN INDIA,

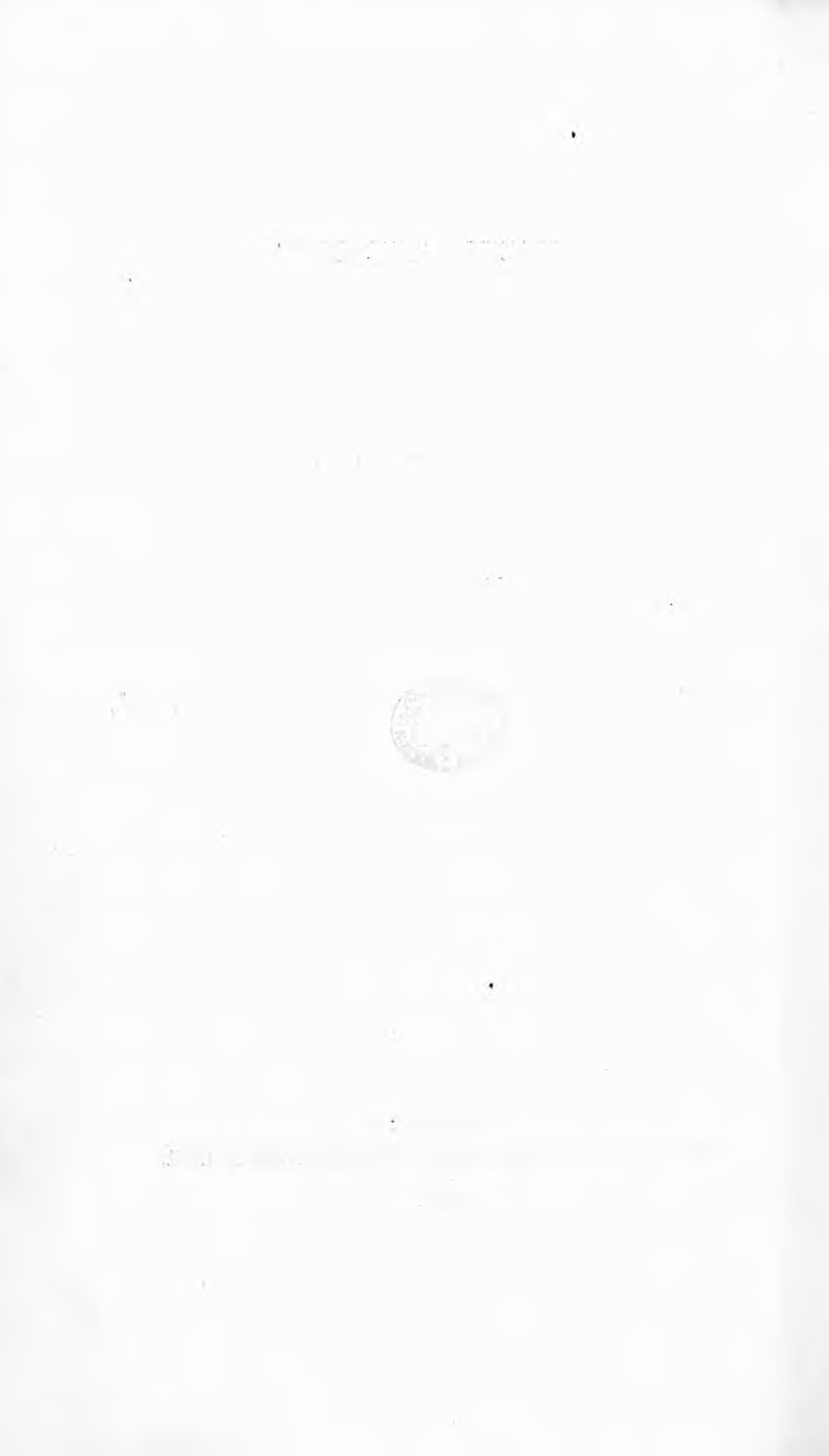
to March 1885.

Hynes (G. J.)



SIMLA ;
OFFICE OF THE DIRECTOR-GENERAL OF THE POST OFFICE OF INDIA.

1885.



DESCRIPTIVE LIST OF INDIAN POSTAGE STAMPS

From 1853,

the date on which they were introduced in India,

to March 1885.

It was not until about 13 years after the first introduction in England of postage stamps that Government decided on their extension to India.

In 1853 the first design was prepared in the Calcutta Mint.

FIRST SERIES—NEITHER GUMMED NOR PERFORATED.

1853.

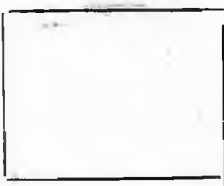
No. 1.—(Oblong.) Half anna—black.

Description of stamp.—Lion trippant under palm tree on plain colored oblong disk, open lace-work border, value below in words.

This stamp never came into use. Delay occurred in cutting the steel die. The Governor-General, Lord Dalhousie, became impatient, and asked the Surveyor-General if postage stamps could not be prepared in his office more speedily. Rough and hurried engravings were accordingly made on copper-plate, and from these, stamps were eventually struck off and issued. The expensive and highly artistic hand-cut die prepared in the Mint being subsequently broken up and destroyed in 1867.

Note.—Proof specimen of a one-anna stamp in black has also been found in the Mint, rectangular, profile head of Queen, with Crown, looking to left, on plain colored ground, with interlaced border and Maltese cross in four corners. This stamp appears never to have been printed or issued.

Black



Half anna

Black



One anna

1854.

No. 2.—(Rectangular.) Half anna—black, red, and blue.

Description of stamp.—Profile head of Queen, with diadem, looking to left on plain colored background lined border, with eight arches on either side. Maltese cross in upper corners. "India" above, value below. Printed on water-marked paper.

Black.

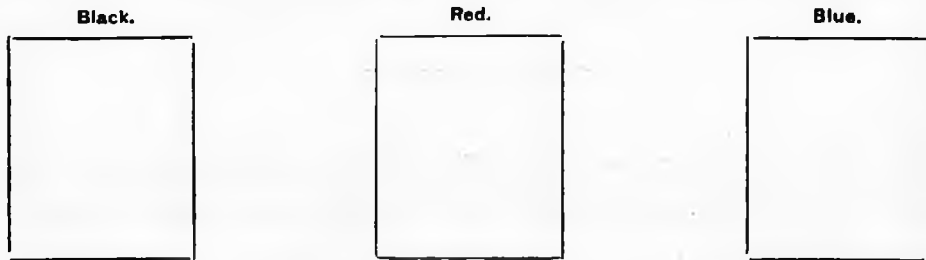
The above stamp was first printed in black and sent to the Post Office for distribution ; but before it was issued to the public, it was discovered that a large packet of the stamps had been purloined. To prevent these stamps being used, the remainder were withdrawn and the stamp was reissued in

Red.

The supply of vermilion running short, these red stamps (after only a few had been issued to the public) were also called in, and the stamp was printed in

Blue,

and this remained the distinguishing color of the half anna stamp up to 1881-82.



No. 3.—(Rectangular.) One anna—red.

Description of stamp.—Same design as No. 2.

An improvement having been made in the red vermilion printing ink, and a supply of color having been obtained, the printing of this stamp was begun in July 1854.



One anna

No. 4.—(Octagonal.) Two annas—red : Two annas—green.

Description of stamp.—Profile head of Queen, with diadem, looking to left, on plain white octagonal ground, marginal border, with columned sides, with "India" occupying $\frac{3}{8}$ ths of margin above, and value $\frac{3}{8}$ ths of margin below.

Proofs of this stamp were printed both in red and green, but they were never issued to the public.



No. 5.—(Rectangular.) Two annas—green.

Description of stamp.—Profile head of Queen, with diadem looking to left, on plain white circular ground, Greek marginal sides, crosses in upper corners, with “India” above, and value below.

This stamp was also never issued; only a proof was printed, and the following stamp (No. 6) was subsequently printed and issued from the Mint.



No. 6.—(Rectangular.) Two annas—green.

Description of stamp.—Profile head of Queen, with diadem, looking to left, on plain colored ground, interlaced border at sides: “India” above and value below.

N. B.—This stamp was also issued roughly perforated.



No. 7.—(Octagonal.) Four annas—red and blue.

Description of stamp.—Profile head of Queen, with diadem, looking to left, printed in blue on plain white circular ground, in red double-lined octagonal border, with “India” in curve above, and value in curve below.



No. 8.—(Octagonal.) Eight annas—red and blue.

Description of stamp.—Profile head of Queen, with diadem, facing to left printed in red on plain octagonal ground, blue marginal octagonal border, with columned sides with “India” above, and value below.

This stamp was designed, but never issued, it being considered unnecessary, as a 4-anna stamp existed.



The printing of stamps in India ceased altogether in November 1855, after which date they were obtained from Messrs. De La Rue and Company in London, adhesive and perforated, and printed in the highest style of steel surface engravings.

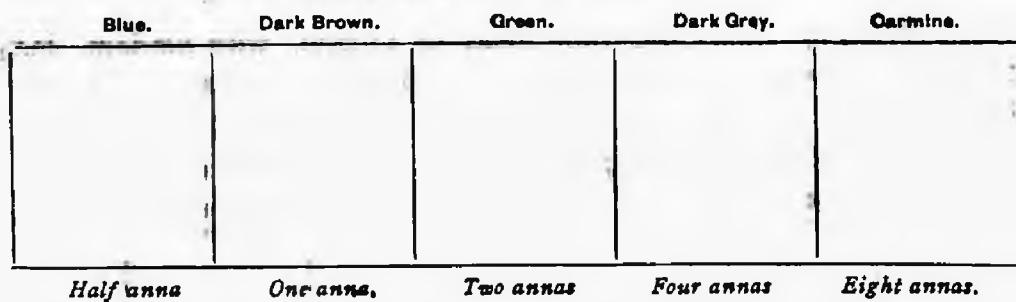
SECOND SERIES, *ADHESIVE* AND PERFORATED, BUT PAPER NOT WATERMARKED.

1855.

No. 9.—(Rectangular.)

- a.*—Half anna—*blue.*
b.—One anna—*dark brown.*
c.—Two annas—*green.*
d.—Four annas—*dark grey.*
e.—Eight annas—*carmine.*

Description of stamp.—Profile head of Queen, with diadem, looking to left, on fine lined background of oval form confined by oval band, bearing the inscription "East India Postage" and the value. The stamp, bound by a rectangular engine-turned band with engine-turning on the spandrels formed between the rectangular border and the oval band.



Nos. 10 and 11. (Rectangular.) Two annas—yellow.

Same stamp as No. 9(*c*), of which very few were issued, the similarity of the original color (green) to the half-anna blue caused a change to yellow, but as the colour first employed was very liable to fade, a much deeper colour (reddish yellow) was used in printing the later issues of these stamps.



1857.

No. 12. Envelope Stamps.

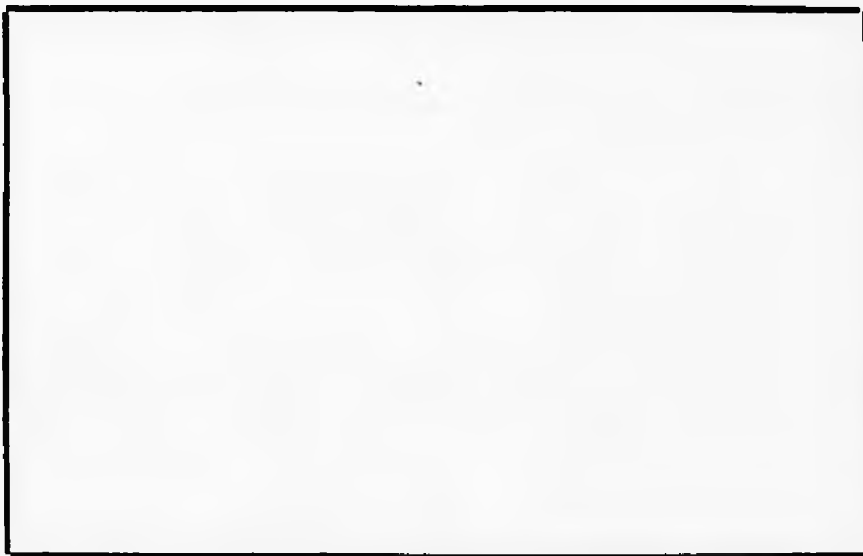
- a.* CIRCULAR. Half anna—*blue.*

Description of stamp.—Embossed cameo stamp, with the parts in relief in white, the background being in blue. Profile head of Queen, with diadem, looking to left, on solid circular blue background. A circular engine-turned band surrounding the stamp, with two tablets therein, the upper one bearing the words "India Postage," the lower one the words "Half Anna," the background of the upper tablet being engine-turned and the background of the lower tablet solid blue. The envelopes on which the stamps are embossed are made of cream-laid paper, so that oblique lines of water-mark run through the stamp.

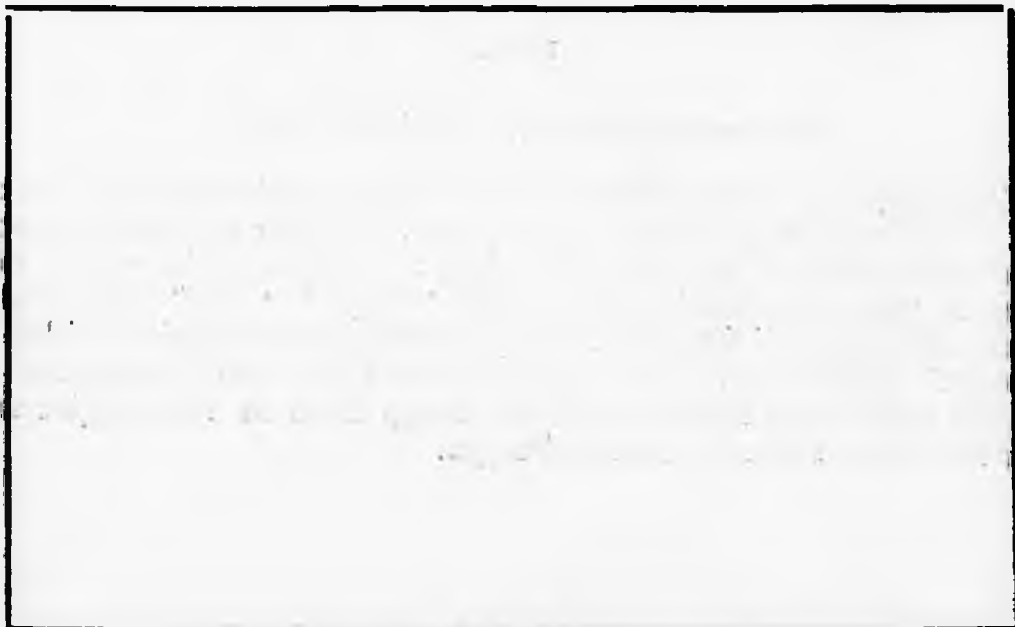
b. CIRCULAR. One anna—brown.

Description of stamp.—Embossed cameo stamp, with the parts in relief in white, the background being in brown. Profile head of Queen, with diadem, looking to left, on solid circular brown background. A circular engine-turned band surrounding the stamp, with two tablets therein, the upper one bearing the words "India Postage," the lower one the words "One Anna," the background of the upper tablet being engine-turned and the background of the lower one solid brown. The envelopes on which the stamps are embossed are made of blue-wove paper, so that there is no watermark running through the stamp.

N. B.—The two envelopes 12 (a) and 12 (b) bear on the seal-flaps an embossed circular cameo stamp, with the parts in relief in white, the background being blue in both envelopes. Lion trippant facing left, under a palm-tree, the stamp being enclosed by a dotted border.



Half anna

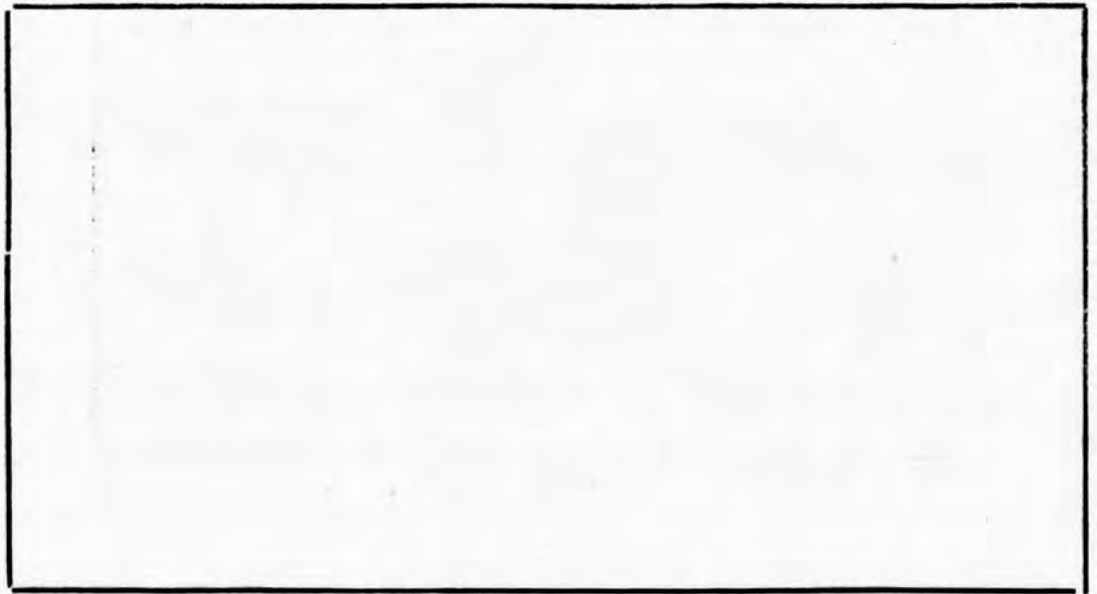


One anna.

No. 13.—Note-Paper with envelope flap.CIRCULAR. HALF ANNA—*blue*.

Description of stamp.—Stamped as No. 12a. The note paper is made of cream-laid paper, the water-mark lines running vertically through the stamp.

This note-paper, like the envelopes above described, bears on the seal-flap an embossed circular cameo stamp with a lion trippant under a palm-tree, the parts in relief in white, the background in blue. The weight of each sheet was one-quarter of a tola (little more than 1-10th of an ounce), that being the then unit of weight for letters. These stamped note-papers were not much in demand, and the unit of weight being afterwards raised to $\frac{1}{2}$ a tola, no need for them existed.



1860.

No. 14.—(Rectangular). Eight pies—*lilac*.

Description of stamp.—Profile head of Queen, with diadem, looking to left, on fine lined background of oval form. Outline of stamp rectangular, with corners taken off at an angle of 45° . A white tablet at the top and bottom of the stamp, bearing the words "Eight" "Pies" respectively. A colored tablet on each side of the stamp; bearing the inscription "East India" "Postage" respectively. The spaces between the oval background of the head, the tablets, and the outline of the stamp filled in with engine-turning. Paper not water-marked; perforated edges.

This stamp was specially required for the prepayment of soldiers' half-ounce letters to the United Kingdom and British colonies, the postage chargeable on which is fixed by Act of Parliament at one penny each, equal to 8 pies in Indian currency.



Eight pies.

1864.

No 15.—(Rectangular.) Four annas—green.

Description of stamp.—Same stamp as No. 9 (d.)

For the same reason that the English black penny stamp was changed to red (*viz.*, on account of the indistinctness of the marks when the stamp was obliterated with black ink) was No. 9 (d), dark grey, altered into green; also for the further reason that in India an imitation of the stamp had been attempted by photography.

After this year the blank marginal space on all the sheets of stamps was printed with an ornamental border, as the blank margins had been made use of to photograph upon.



Four annas.

THIRD SERIES—ADHESIVE, PERFORATED AND WATER-MARKED.

In the year 1865 a new, and what may be called the third series of stamps was issued. The paper on which this series was printed bore the water-mark impression of an elephant's head on each stamp.

1865.

No. 16.—Adhesive stamps, perforated and water-marked.

Description of stamp.—Same design as No. 9 :—

- a.—Half anna—blue.
- b.—Eight pies—lilac.
- c.—One anna—dark brown.
- d.—Two annas—orange.
- e.—Four annas—green.
- f.—Eight annas—carmine.

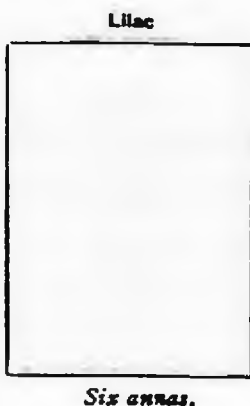
Blue	Lilac	Dark Brown	Orange	Green	Carmine
Half anna.	Eight pies.	One anna.	Two annas.	Four annas.	Eight annas.

1866.

No. 17—(Provisional) Six Annas—lilac.

A demand for six-anna stamps having arisen, the six anna revenue stamps were for a time brought into use for postage, the upper and lower portion of the stamp being cut off and the word "Postage" printed in green ink above the word "Six" at the top of the stamp.

Description of stamp.—Profile head of Queen, with diadem, looking to left, in ornamental circle. "Six," in arch above and "Annas" in curve below. "Postage" over-printed in green above "six."



In this year (1866) it was decided that, with the exception of certain privileged officers, stamps should be affixed to Service correspondence, and as there was not sufficient time to obtain from Messrs. De La Rue and Company a supply of stamps over-printed with the word "Service," arrangements were made early in the year for the ordinary stamps No. 16 *a, b, c, d, e, and f*, to be over-printed in India with the word "Service" in black.

No. 18—Provisional Adhesive Service Stamp.

The following stamps were issued, the word "Service" being printed across in small type :—

- No. 16.—*a*—Half anna—*blue*.
- b*—Eight pies—*lilac*.
- c*—One anna—*dark brown*.
- d*—Two annas—*orange*.
- e*—Four annas—*green*.
- f*—Eight annas—*carmine*.

Blue	Lilac	Dark Brown	Orange	Green	Carmine
<i>Half anna.</i>	<i>Eight pies.</i>	<i>One anna.</i>	<i>Two annas.</i>	<i>Four annas.</i>	<i>Eight annas.</i>

The supply of these, however, soon ran short, and other provisional stamps had to be prepared in India by utilizing revenue stamps for Service postage.

No. 19—Provisional Adhesive Service Stamp (Oblong). Two annas—lilac.

This stamp is formed of the 2-rupee foreign bill stamp with the words "Foreign" and "Two," at the top, and "Rupees" and "Bill," at the bottom cut off, and the words "Service" and "Two Annas" over-printed above and below the Queen's head.

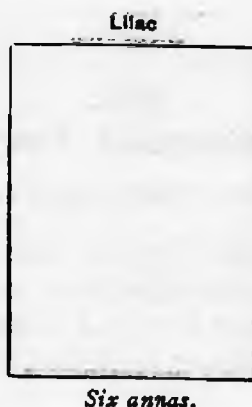
- No. 19.—(a) Over-printed in black ink.
- (b) Over-printed in green ink.

1866.

No. 17—(Provisional) Six Annas—*lilac*.

A demand for six-anna stamps having arisen, the six anna revenue stamps were for a time brought into use for postage, the upper and lower portion of the stamp being cut off and the word "Postage" printed in green ink above the word "Six" at the top of the stamp.

Description of stamp.—Profile head of Queen, with diadem, looking to left, in ornamental circle. "Six," in arch above and "Annas" in curve below. "Postage" over-printed in green above "six."



In this year (1866) it was decided that, with the exception of certain privileged officers, stamps should be affixed to Service correspondence, and as there was not sufficient time to obtain from Messrs. De La Rue and Company a supply of stamps over-printed with the word "Service," arrangements were made early in the year for the ordinary stamps No. 16 *a, b, c, d, e,* and *f,* to be over-printed in India with the word "Service" in black.

No. 18.—Provisional Adhesive Service Stamp.

The following stamps were issued, the word "Service" being printed across in small type :—

- No. 16.—*a*—Half anna—*blue*.
- b*—Eight pies—*lilac*.
- c*—One anna—*dark brown*.
- d*—Two annas—*orange*.
- e*—Four annas—*green*.
- f*—Eight annas—*carmine*.

Blue	Lilac	Dark Brown	Orange	Green	Carmine
<i>Half anna.</i>	<i>Eight pies.</i>	<i>One anna.</i>	<i>Two annas.</i>	<i>Four annas.</i>	<i>Eight annas.</i>

The supply of these, however, soon ran short, and other provisional stamps had to be prepared in India by utilizing revenue stamps for Service postage.

No. 19.—Provisional Adhesive Service Stamp (Oblong). Two annas—*lilac*.

This stamp is formed of the 2-rupee foreign bill stamp with the words "Foreign" and "Two," at the top, and "Rupees" and "Bill," at the bottom cut off, and the words "Service" and "Two Annas" over-printed above and below the Queen's head.

- No. 19.—(a) Over-printed in black ink.
- (b) Over-printed in green ink.

The supply of these goods is not sufficient to meet the demand of the public and it is necessary to take steps to increase the supply.

The Government has decided to take the following steps to increase the supply of these goods:

Step	Description	Effect	Cost	Benefit
1	Increase production	Increase supply	High	Medium
2	Reduce waste	Increase supply	Low	High
3	Import goods	Increase supply	Very High	Low

The supply of these goods is not sufficient to meet the demand of the public and it is necessary to take steps to increase the supply.

The Government has decided to take the following steps to increase the supply of these goods:

The supply of these goods is not sufficient to meet the demand of the public and it is necessary to take steps to increase the supply.

Description of stamp.—Profile head of Queen, with diadem, looking to left, on plain colored background, enclosed within beaded and double-lined circle, over-printed with words "Service," above, and "Two Annas" below circle.

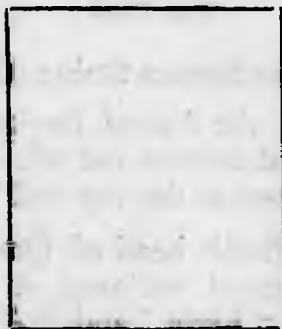


No. 20.—Provisional Adhesive Service Stamp (Oblong.) Half Anna—lilac.

This stamp is formed of the ordinary revenue receipt stamps over-printed in green with the words "Service Postage," in arch over Queen's head.

Description of stamp.—Profile head of Queen, with diadem, facing to left, on plain colored background, enclosed in beaded circle and surrounded by two circular bands. In outer band, "Government of India" repeated twice; in inner band, "Receipt, Bill or Draft" above, "Half Anna" below; ornamented corners, and the words "Service Postage" in green over-printed in inner band over the words "Receipt, Bill or Draft."

Lilac.



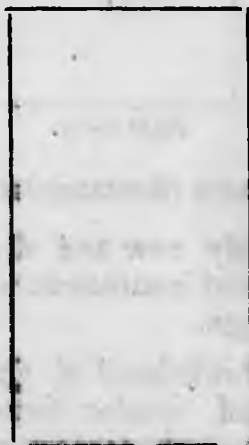
Half anna.

No. 21.—Provisional Adhesive Service Stamp (Oblong.) Two Annas—purple.

This stamp is formed of the foreign bill stamp of two annas, with the word "Foreign" at top and "Bill" at bottom cut off. And the words "Service" and "Postage" over-printed in green above and below the Queen's head.

Description of stamp.—Profile head of Queen, with diadem, facing to left, on plain colored ground, enclosed in beaded and double-lined circle, tessellated ornamental ground, with "Two" in arched band above, and "Annas" in curved band below. The words "Service" and "Postage" over-printed in green on tessellated ornamental ground above and below Queen's head.

Purple.

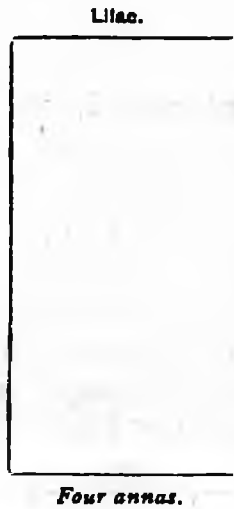


Two annas.

No. 22.—Provisional Adhesive Service Stamp (Oblong.) Four Annas—lilac.

This stamp is formed of the foreign bill stamp of 4 annas, with the words "Foreign" at top and "Bill" at bottom cut off, and the words "Service" and "Postage" over-printed in green above and below the Queen's head.

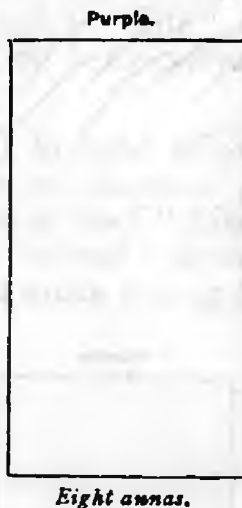
Description of stamp.—Profile head of Queen, with diadem, looking to left, on plain colored background in beaded and serrated circle. The words "Four" and "Annas" in ornamental squares above and below, with interlaced loops at sides; the words "Service" and "Postage" over-printed in green above and below Queen's head.



No. 23.—Provisional Adhesive Service Stamp (Oblong.) Eight Annas—purple.

This stamp is formed of the 8-anna foreign bill stamp, with the words "Foreign" at top and "Bill" at bottom cut off, and the words "Service" and "Postage" over-printed in green at the top and bottom of the stamp.

Description of stamp.—Profile head of Queen, with diadem, looking to left, on plain colored background enclosed in beaded circle within a lined octagonal frame. The words "Eight" and "Annas" in solid colored square frames above and below, on tessellated and serrated ground. The words "Service" and "Postage" over-printed in green above and below colored squares with value.

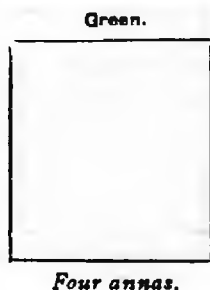


No. 24.—Adhesive Stamp (Rectangular.) Four annas—green.

This was a stamp of entirely new and distinctive form, superseding No. 15, the colour of which was found insufficient to ensure its distinction from the half-anna blue of the same design.

Description of stamp.—Profile head of Queen, with diadem, looking to left, on fine lined background of circular form surrounded by pearl border. Outline of stamp rectangular with corners scolloped out. Colored tablets following the pearl border at top and bottom of the stamp, bearing the inscrip-

tions "East India Postage" and "Four annas." Paper water-marked with elephant's head ; perforated edges.



No. 25.—Adhesive stamp (Rectangular.) Eight annas—carmine.

Description of stamp.—An alteration in the 8-anna carmine No. 16. The diadem is of a different form, and the Queen's head modified in other respects, the inscription being in bolder lettering.



No. 26.—Adhesive Service Stamps.

This was the first permanent issue of Service stamps, which consisted of the ordinary stamps Nos. 16 (a), 16 (c), 16 (d), 24 and 25, over-printed in black ink, with the word "Service" in type somewhat larger than the provisional over-print in India on stamps No. 18.

- No. 26—*a*—Half anna—blue.
b—One anna—dark brown.
c—Two annas—orange.
d—Four annas—green.
e—Eight annas—carmine.

Blue.	Dark Brown.	Orange.	Green.	Carmine.
<i>Half anna.</i>	<i>One anna.</i>	<i>Two annas.</i>	<i>Four annas.</i>	<i>Eight annas.</i>

1867.

No. 27.—Adhesive Stamp (Rectangular.) Six Annas and Eight Pies—slate.

This stamp was obtained on account of the postage chargeable on $\frac{1}{2}$ oz. letters for the United Kingdom *via* Marseilles having been fixed at 6 annas 8 pies.

Description of stamp.—Profile head of Queen, with diadem, looking to left, on fine lined background of elongated octagonal form, surrounded by colored band, bearing the inscriptions "East India Postage," "Six Annas and Eight Pies." The outline of the stamp rectangular, with the corners between the out line

and the octagonal band filled in with a rope pattern border. Paper water-marked with elephant's head ; perforated edges.

Slate.



Six annas and eight pies.

1868.

No. 28.—Adhesive Service Stamp. Six annas and Eight Pies—slate.

This stamp was added to the list of Service stamps (No. 26), the word "Service" being printed across in black ink.

Slate.



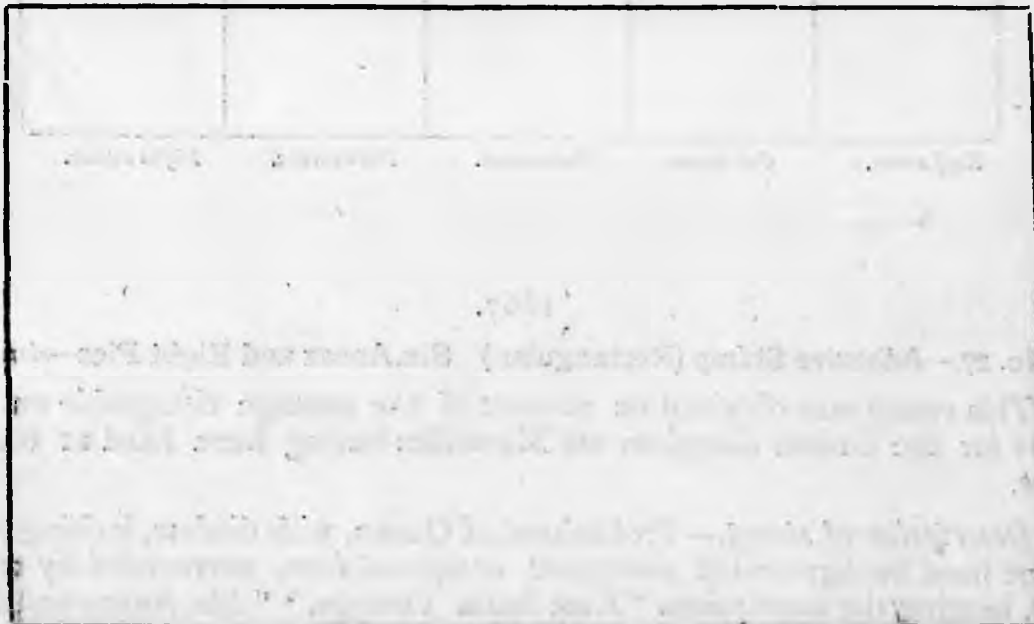
Six annas and eight pies.

1871.

No. 29—Envelope Stamps.

(a) HALF ANNA—CIRCULAR—blue.

Similar in every way to No. 12 (a) except that paper is thicker, and envelope larger.

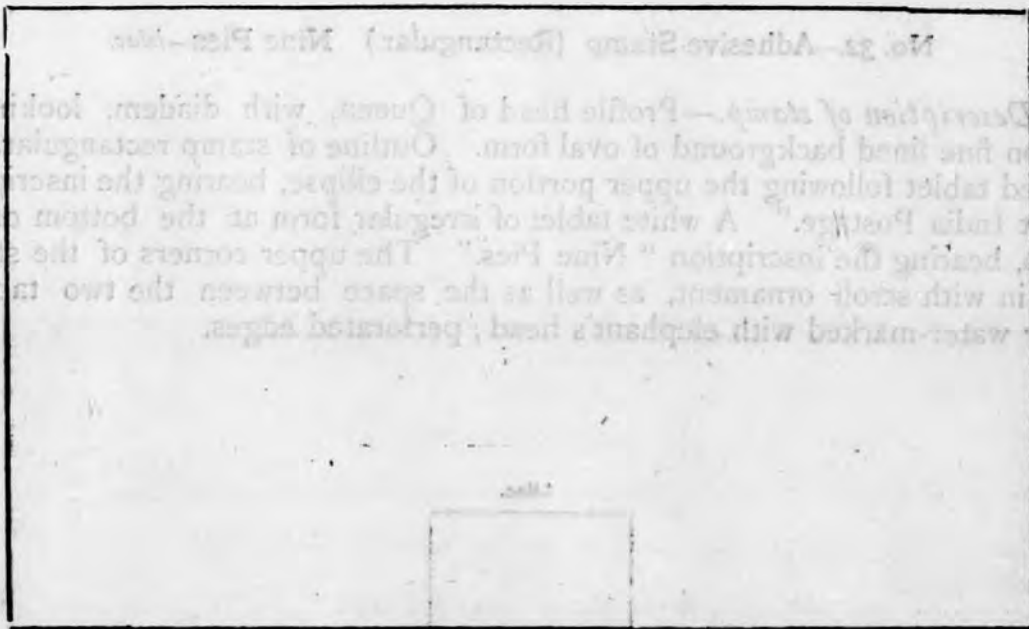




(b) ONE ANNA—CIRCULAR—dark brown.

Similar to No. 12 (b), but paper thicker and embossed cameo stamp on seal-flap colored brown instead of blue. Laid instead of wove paper, so that water-marked lines run through the stamp diagonally.

These envelopes were made of thicker paper in consequence of the doubling, in April 1869, of the limits of weights or the several rates of letter postage.

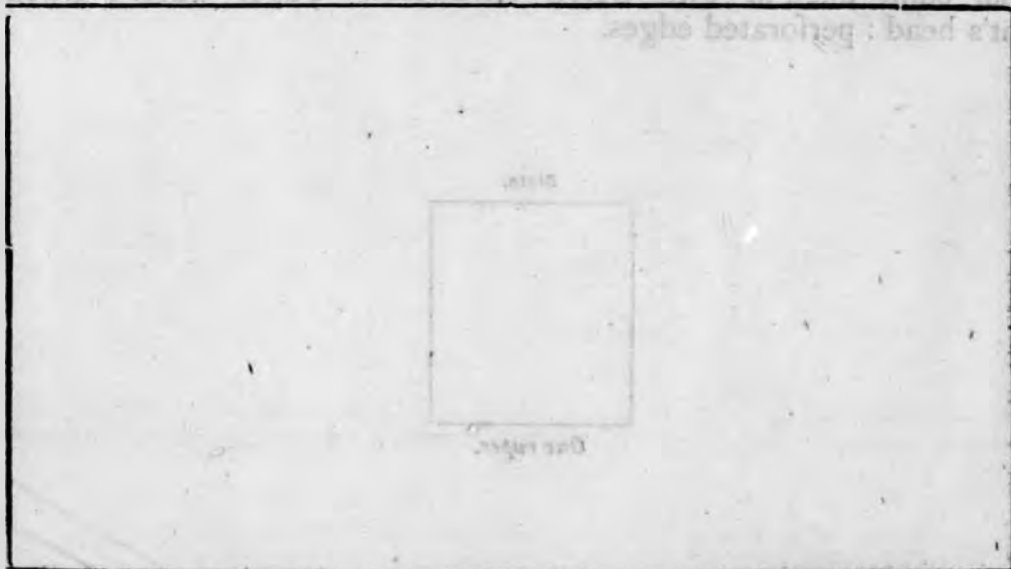


One anna.

1874.

No. 30.—Envelope Stamps. Half-anna—Circular—blue.

Similar in every way to No. 29 (a), but the envelope a little smaller.



Half anna.

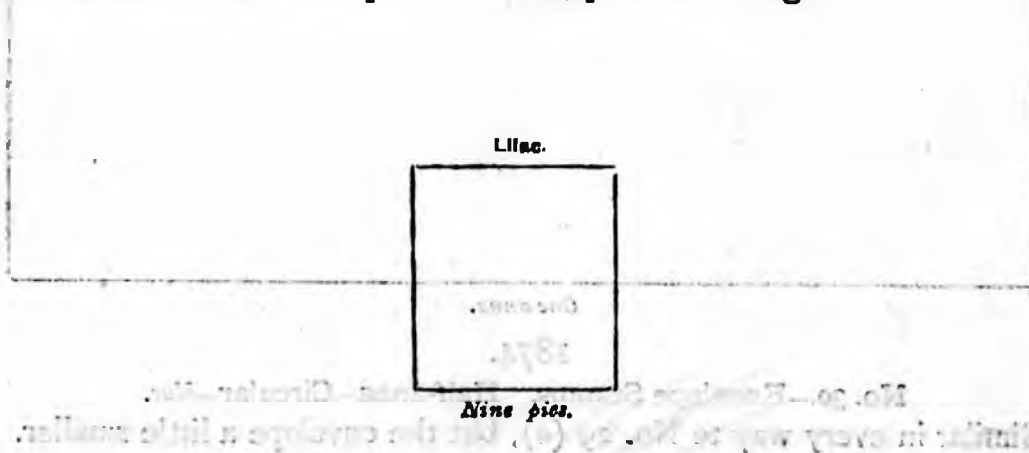
No. 31 a, b, c, d, e.—Adhesive Service Stamps.

Same series as No. 26, except that the over-print is "On H. M. S." instead of the word "Service"

Blue.	Dark brown.	Orange.	Green.	Carmine.
<i>Half anna.</i>	<i>One anna.</i>	<i>Two annas.</i>	<i>Four annas.</i>	<i>Eight annas.</i>

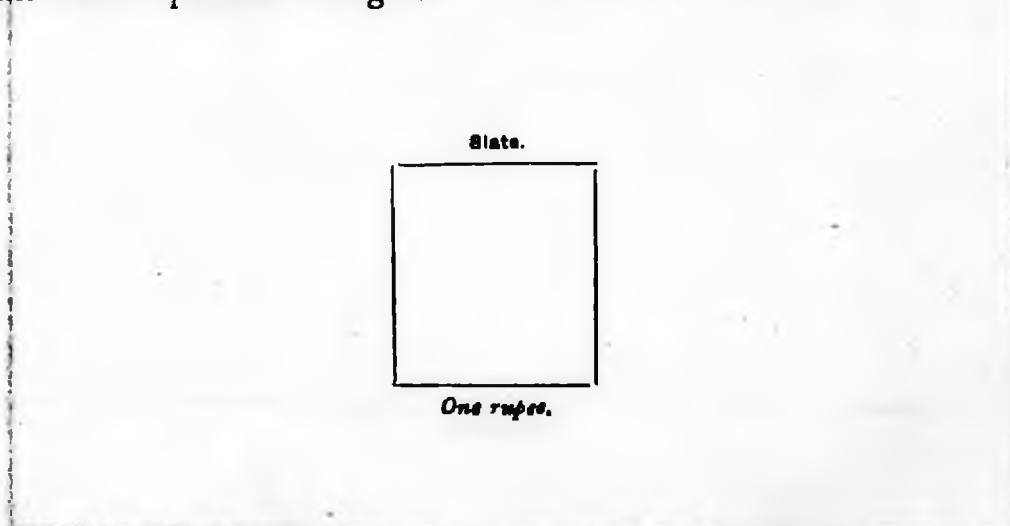
No. 32.—Adhesive Stamp (Rectangular.) Nine Pies—*lilac.*

Description of stamp.—Profile head of Queen, with diadem, looking to left, on fine lined background of oval form. Outline of stamp rectangular. A colored tablet following the upper portion of the ellipse, bearing the inscription "East India Postage." A white tablet of irregular form at the bottom of the stamp, bearing the inscription "Nine Pies." The upper corners of the stamp filled in with scroll ornament, as well as the space between the two tablets. Paper water-marked with elephant's head ; perforated edges.

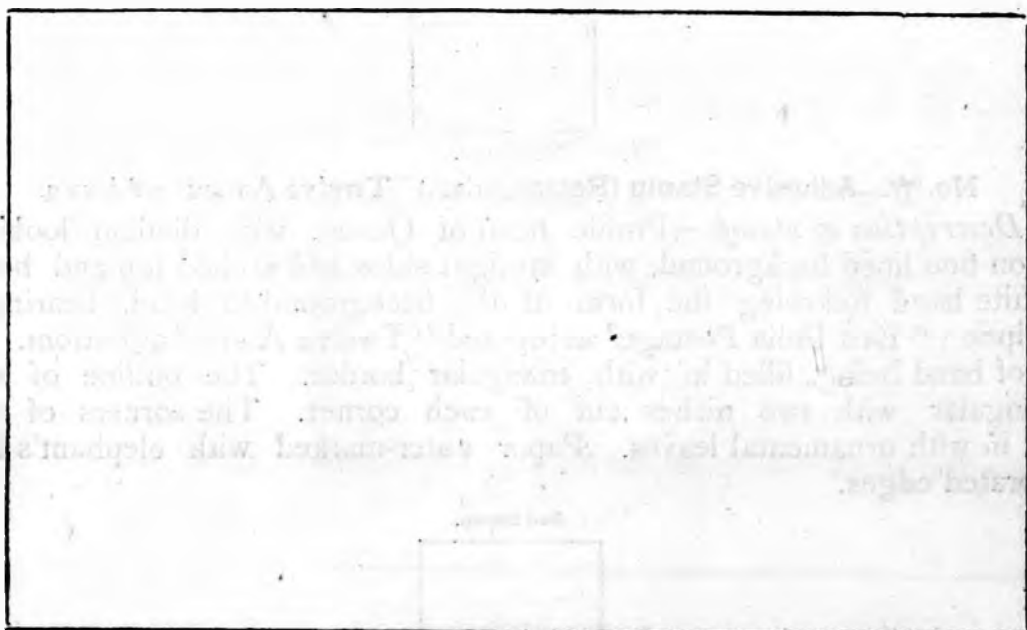


No. 33.—Adhesive Stamp (Rectangular.) One Rupee—*slate.*

Description of stamp.—Profile head of Queen, with diadem, looking to left, on fine lined background of elongated octagonal form, surrounded by colored band bearing the inscription "East India Post" at top and "One Rupee" at bottom, the side of band being filled in with a "key" pattern. The outline of stamp rectangular, with the corners between the outline and the octagonal band filled in with trefoil ornaments. Paper water-marked with elephant's head : perforated edges.



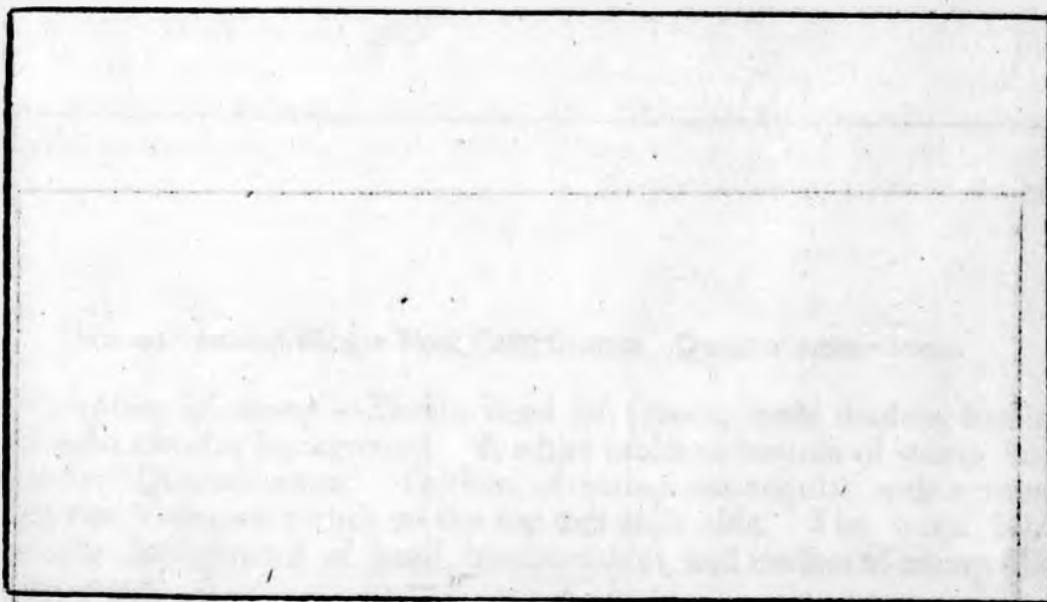
No. 34.—Envelope Stamp. One Anna—Circular—*brown*.
Same as No. 29(b), but the paper cream-laid instead of blue-laid.



One anna.

1875.

No. 35.—Envelope Stamp, Circular Half-anna—*blue*.
Same as No. 30, but the embossed stamp on seal-flap without color.



Half anna.

1876.

No. 36.—Adhesive Stamp (Rectangular.) Six Annas—yellow brown.

Description of stamp.—Profile head of Queen, with diadem, looking to left, on fine lined background with straight base and sides and arched top. White band following the form of this background, bearing the inscriptions "East India Postage," "Six Annas." The outline of stamp rectangular with the spandrels formed between outline and arched top of band filled with foliated ornament. Paper water-marked with elephant's head; perforated edges.

Yellow brown.



Six annas.

No. 37.—Adhesive Stamp (Rectangular.) Twelve Annas—red brown.

Description of stamp.—Profile head of Queen, with diadem looking to left, on fine lined background, with straight sides and arched top and bottom. A white band following the form of the background to head, bearing the inscription "East India Postage" at top and "Twelve Annas" at bottom. The side of band being filled in with triangular border. The outline of stamp rectangular with two niches out of each corner. The corners of stamp filled in with ornamental leaves. Paper water-marked with elephant's head; perforated edges.

Red brown.

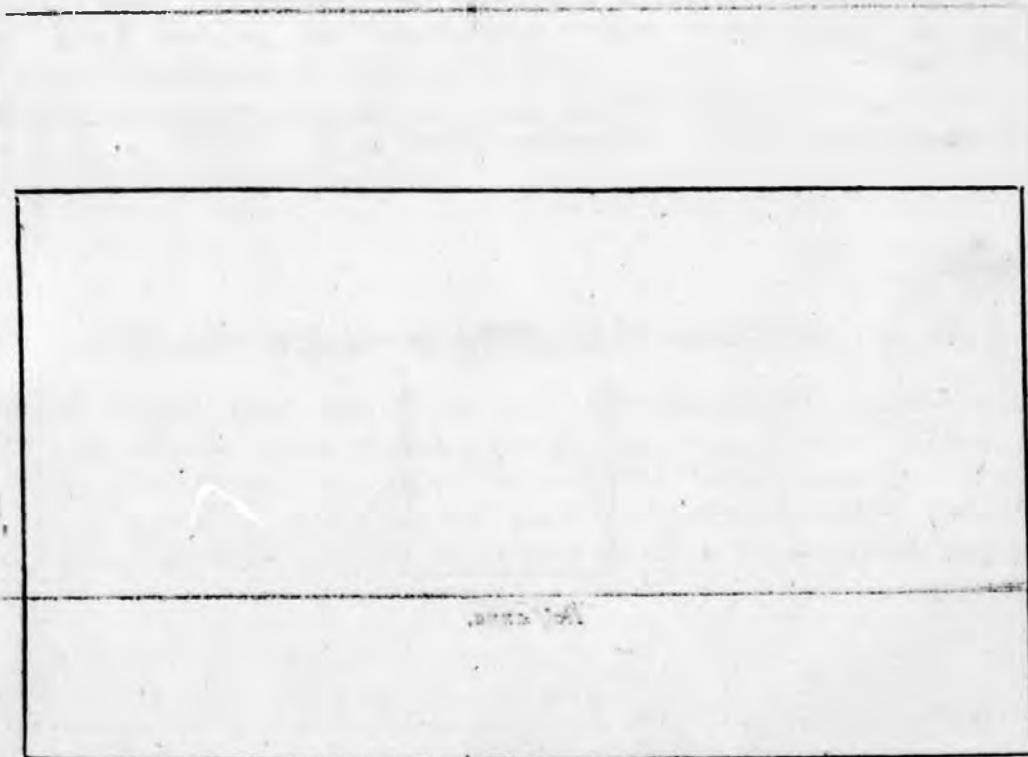


Twelve annas.

1877.

No. 38.—Envelope Stamp—Circular.—Half Anna—blue.

Same as No. 35, but without an embossed stamp on seal-flap, and with the side-flaps of envelope cut down.



Half anna.

1876.

No. 36.—Adhesive Stamp (Rectangular.) Six Annas—yellow brown.

Description of stamp.—Profile head of Queen, with diadem, looking to left, on fine lined background with straight base and sides and arched top. White band following the form of this background, bearing the inscriptions "East India Postage," "Six Annas." The outline of stamp rectangular with the spandrels formed between outline and arched top of band filled with foliated ornament. Paper water-marked with elephant's head; perforated edges.

Yellow brown.



Six annas.

No. 37.—Adhesive Stamp (Rectangular.) Twelve Annas—red brown.

Description of stamp.—Profile head of Queen, with diadem looking to left, on fine lined background, with straight sides and arched top and bottom. A white band following the form of the background to head, bearing the inscription "East India Postage" at top and "Twelve Annas" at bottom. The side of band being filled in with triangular border. The outline of stamp rectangular with two niches out of each corner. The corners of stamp filled in with ornamental leaves. Paper water-marked with elephant's head; perforated edges.

Red brown.

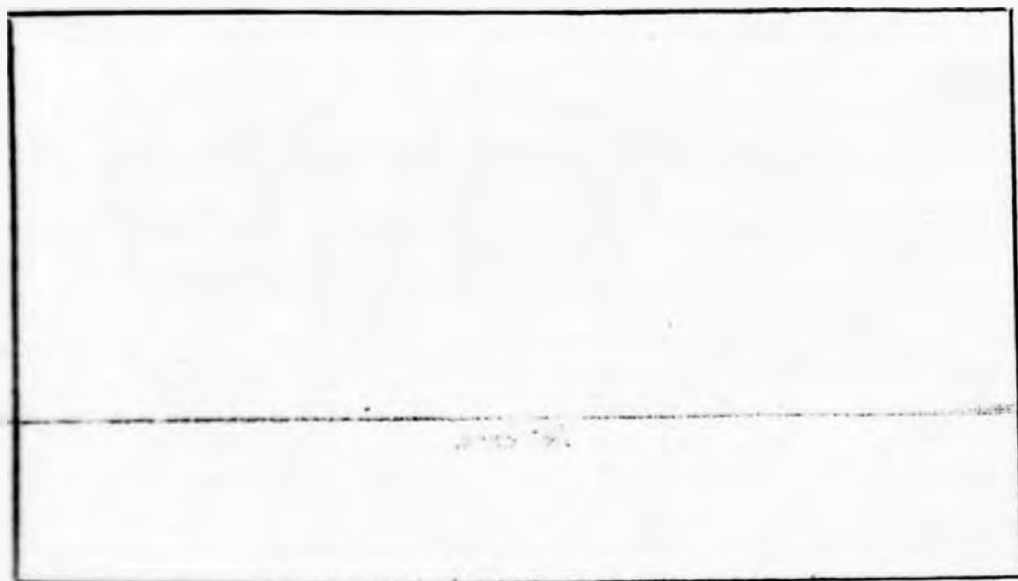


Twelve annas.

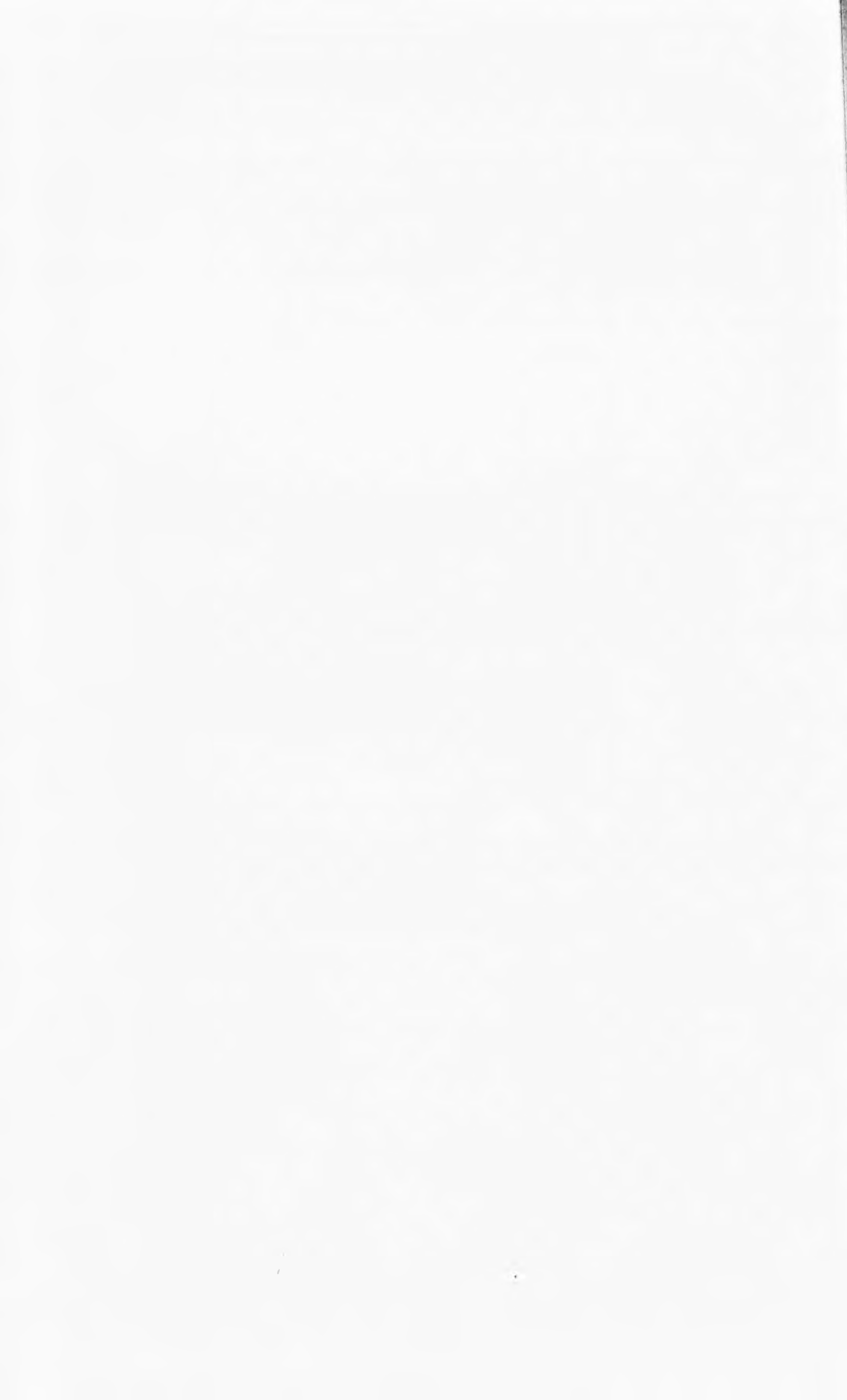
1877.

No. 38.—Envelope Stamp—Circular.—Half Anna—blue.

Same as No. 35, but without an embossed stamp on seal-flap, and with the side-flaps of envelope cut down.



Half anna.

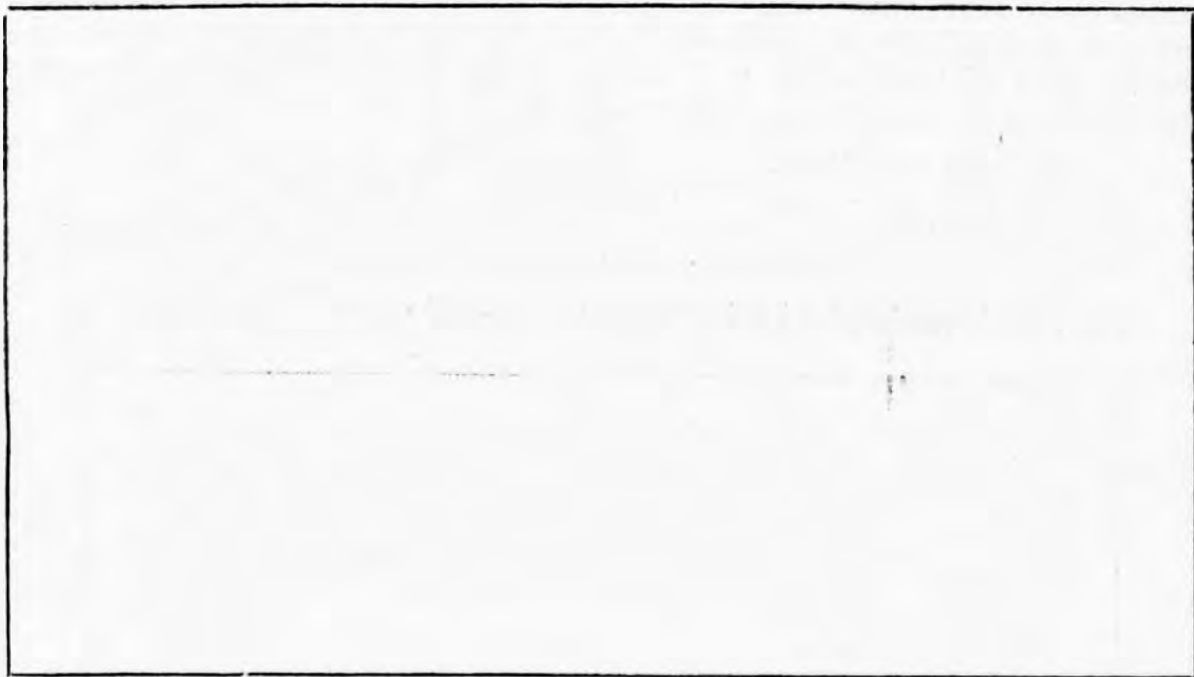


1879.

No. 39.—Soldiers' and Seamen's Envelope Stamp, vesica-shaped. Nine Pies—*vermilion*.

Description of stamp.—Embossed cameo stamp with the parts in relief in white, the background being in vermilion. Profile head of Queen, with diadem, looking to left, on solid vermilion vesica-shaped (*i.e.*, a form made by two intersecting segments of circles) background. An engine-turned band, bearing the inscriptions "India Postage," "Nine Pies," completes a vesica-shaped stamp. The envelopes on which the stamp is embossed are made of cream-wove paper, so that there is no water-mark. They are printed with the words—

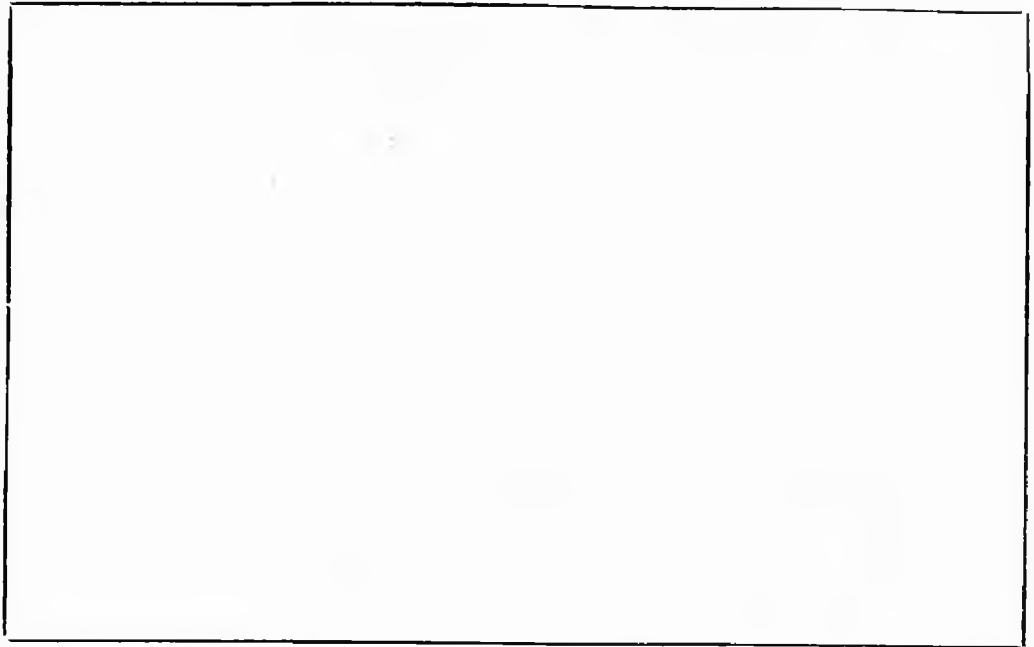
Soldiers' and Seamen's envelope.
Address.
Sender's name and rank.
Regiment, ship, or office.
Commanding Officer or head of department.
Sig. and rank.
Regiment, ship, or official designation.



No. 40.—Inland Single Post Card Stamp. Quarter anna—*brown*.

Description of stamp.—Profile head of Queen, with diadem, looking to left, on solid circular background. A white tablet at bottom of stamp bearing the words "Quarter anna." Outline of stamp rectangular with corners cut off, with two V-shaped niches on the top and each side. The space between the circular background of head, bottom tablet, and outline of stamp filled in with ornament.

In addition to the stamp, the card bears the royal arms and the words "East India Post Card;" "The address only to be written on this side." The card is made of thick buff unwater-marked paper.



No. 41.—International Single Post Card Stamp. One and a half anna.—blue.

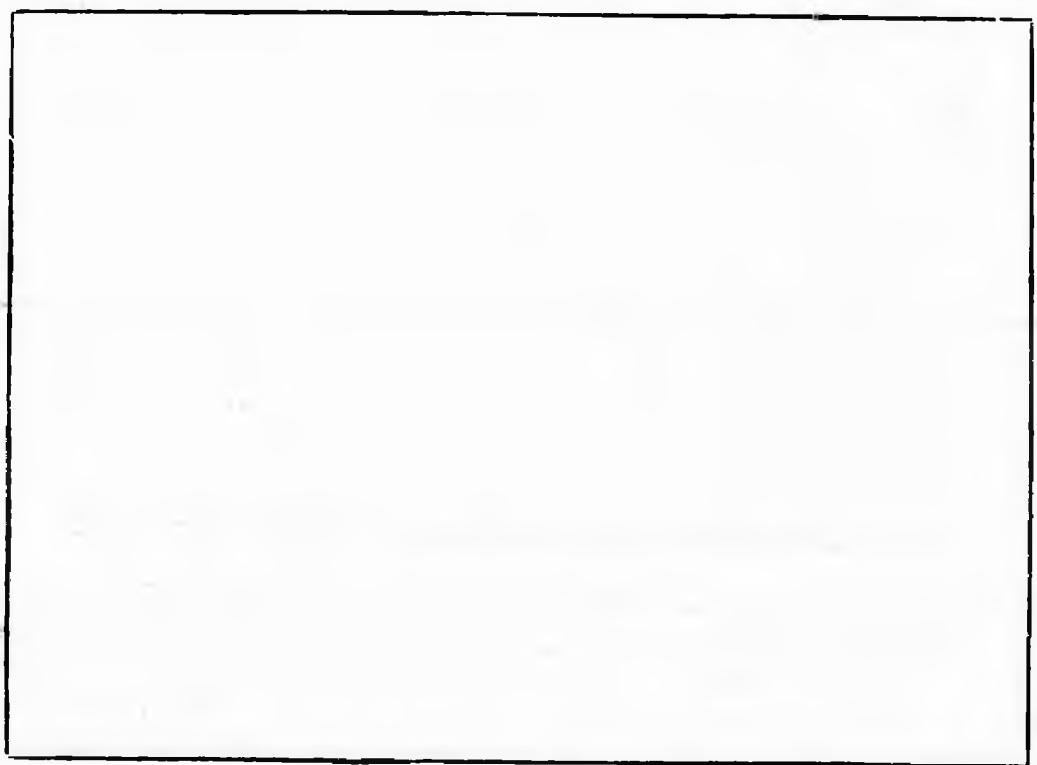
Description of stamp.—Profile head of Queen, with diadem, looking to left, on solid circular background. A white arched tablet in upper portion of stamp bearing the inscription "One and a half anna." Outline of stamp rectangular with corners scolloped out, and with the centre of each side broken into segments of circles acanthus-leaf ornament filling the spaces between the background of head tablet and outline of stamp. In addition to the stamp the card bears the royal arms and the words—

Universal Postal Union.
British India.
Post Card.

Union Postale Universelle.
Inde Britannique.
Carte Postale.

The address only to be written on this side.

The card is made of thick buff unwater-marked paper.



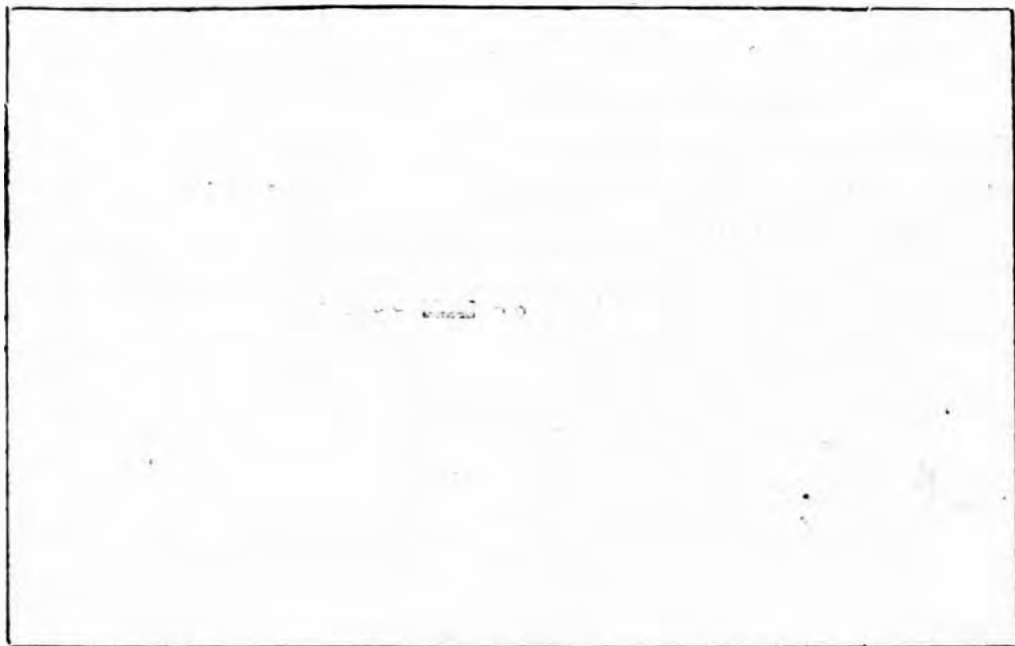
One and a half anna.

1880.

No. 42.—Inland Single Service Post Card Stamp. Quarter Anna—blue.

Plain white card, engine turned square, in right-hand corner with words "On H. M.'s Service" printed within square. In addition to the stamp, the card bears in blue the words "Quarter Anna Post Card" "To be used for official correspondence only" at top, and at bottom the words "The official signature and designation of the sender to be written on the reverse."

Note.—This card was prepared and printed in India.



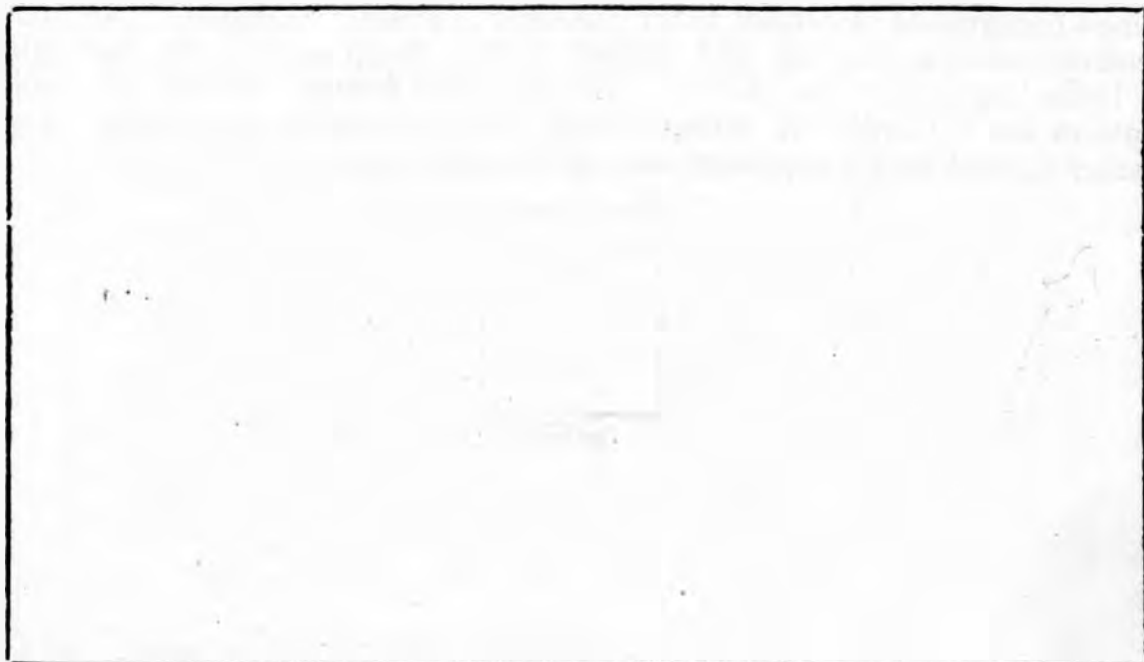
Quarter anna.

1881.

No. 43.—Envelope Stamp (Oval) Four Annas and Six Pies—orange yellow.

This envelope was provided to meet a want for stamped envelopes for foreign correspondence, the postage to the United Kingdom having been reduced to $4\frac{1}{2}$ annas.

Description of stamp.—Embossed oval cameo stamp, with the parts in relief in white, the background being in orange yellow. Profile head of Queen, with diadem, looking to left, on solid orange yellow oval background. An oval engine-turned band, embraced on each side by a pearl border, bearing the inscriptions "India Postage," "Four Annas and Six Pies." The envelopes on which the stamp is embossed are made of cream-wove paper, so that there is no water-mark.



Four and a half annas.

Fourth Series (Rectangular) gummed and perforated.

1881-82.

In this series of postage stamps, the Queen's head is engraved with lines somewhat further apart than in the former series. This alteration was required in order to carry out an improved economical method of manufacturing the stamps. They are of a larger size than formerly, being the same size as the English postage stamps, and they are supplied in sheets of 240 multiples, instead of in sheets of 320. These stamps were brought into use as the stock of previous issue became exhausted.

No. 44.—Adhesive Stamp. Half Anna—dark green.

Description of stamp.—Profile head of Queen, with diadem, looking to left, on fine lined background of oval form, surrounded by a colored oval band, bearing the inscriptions "India Postage," "Half Anna." Stamp rectangular in form, the spandrels formed between the elliptical band and outline being filled in with a Vandyke border. Paper water-marked with a five-pointed star ; perforated edges.

*Half anna.***No. 45.—Adhesive Stamp. Nine Pies—carmine.**

Description of stamp.—Profile head of Queen, with diadem, looking to left, on fine lined background of oval form. Outline of stamp rectangular. A colored tablet following the upper portion of the ellipse bearing the inscription "India Postage" ; a colored tablet of irregular form at the bottom of the stamp bearing the inscription "Nine Pies." The upper corners of the stamp filled in with scroll ornament, as well as the space between the two tablets. Paper water-marked with a five-pointed star ; perforated edges.

*Nine pies.***No. 46.—Adhesive Stamp. One Anna—chocolate.**

Description of stamp.—Profile head of Queen, looking to left, on fine lined background of circular form. Outline of stamp rectangular. An arched colored tablet at the top and bottom of the stamp bearing the inscriptions "India Postage," "One Anna." The spandrels formed between the arched tablets and the outline of stamp filled in with ornamental *fleur-de-lis*. Paper water-marked with five-pointed star ; perforated edges.

*One anna.*



No. 47.—Adhesive Stamp. One anna and Six Pies—cool brown.

Description of stamp.—Profile head of Queen, with diadem, looking to left, on fine lined background of oval form. Outline of stamp rectangular. A straight colored tablet at the top and bottom of the stamp, bearing the inscriptions "India Postage" and "One Anna Six Pies." The spandrels formed by the elliptical background of head, the tablets, and the outline of stamp filled in with scollop and Vandyke ornament. Paper water-marked with five-pointed star ; perforated edges.



One and a half anna.

No. 48.—Adhesive Stamp. Two Annas—bright blue.

Description of stamp.—Profile head of Queen, with diadem, looking to left, on fine lined background of a broken ornamental form. Outline of stamp rectangular. A straight colored tablet at the top and bottom of the stamp bearing the inscriptions "India Postage" and "Two Annas." The irregular spaces formed between the background of head, the tablets, and the outline of stamp filled in with scolloped ornament. Paper water-marked with five-pointed star ; perforated edges.



Two annas.

No. 49.—Adhesive Stamp. Three Annas—orange.

Description of stamp.—Profile head of Queen, with diadem, looking to left, on fine lined background of ornamental form. Outline of stamp rectangular. Straight colored tablets at top and bottom of stamp, bearing the inscriptions "India Postage," "Three Annas." A band on each side bearing ornamental rosettes and ornamental leaves in the corners taken out of the head background. Paper water-marked with five-pointed star ; perforated edges.



Three annas.

No. 50.—Adhesive Stamp. Four Annas—olive green.

Description of stamp.—Profile head of Queen, with diadem, looking to left, on fine lined background of circular form, surrounded by a pearl border. Outline of stamp rectangular, with corners scolloped out. An arched colored tablet at the top and bottom of the stamps bearing the inscriptions "India Postage," "Four Annas." The spaces between arched tablets and the outline of the stamp filled in with ornamental dots. Paper water-marked with five-pointed star ; perforated edges.



Four annas.

No. 51.—Adhesive Stamps. Six Annas—cool yellow.

Description of stamp.—Profile head of Queen, with diadem, looking to left, on fine lined background with straight sides and base and arched top. A colored arched tablet at the top and a straight colored tablet at the bottom bearing the inscriptions "India Postage," "Six Annas." Stamp rectangular in form. A fret border running up each side and continued through the spandrels formed between the top arched tablet and the outline of stamp. Paper water-marked with five-pointed star ; perforated edges.

*Six annas.***No. 52.—Adhesive Stamp. Eight Annas—purple.**

Description of stamp.—Profile head of Queen, with diadem, looking to left, on fine lined background of rectangular form with corners notched out. Stamp of rectangular form with scalloped edges. A straight colored tablet at top and bottom bearing the inscriptions "India Postage," "Eight Annas." A border runs up each side of the stamp with colored dots and lines, and there is a little ornamental leaf in each of the corners notched out of the background of head. Paper water-marked with five-pointed star ; perforated edges.

*Eight annas.***No. 53.—Adhesive Stamp. One Rupee—slate.**

Description of stamp.—Profile head of Queen, with diadem, looking to left, on fine lined background of elongated octagonal form, surrounded by colored band, bearing the inscription "India Postage" at top, and "One Rupee" at bottom, the sides of band being filled in with a triangular pattern. Outline of stamp rectangular. The corners between the outline and the octagonal band filled in with trefoil ornaments. Paper water-marked with a five-pointed star ; perforated edges.

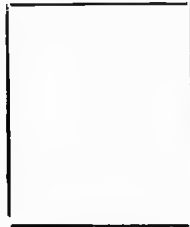
*One rupee.***ADHESIVE SERVICE STAMPS.****No. 54.—Half Anna—dark green**

Same as No. 44, but over-printed in black "On H. M. S."

*Half anna.*

No. 55.—One Anna—chocolate.

Same as No. 46, but over-printed in black "On H. M. S."

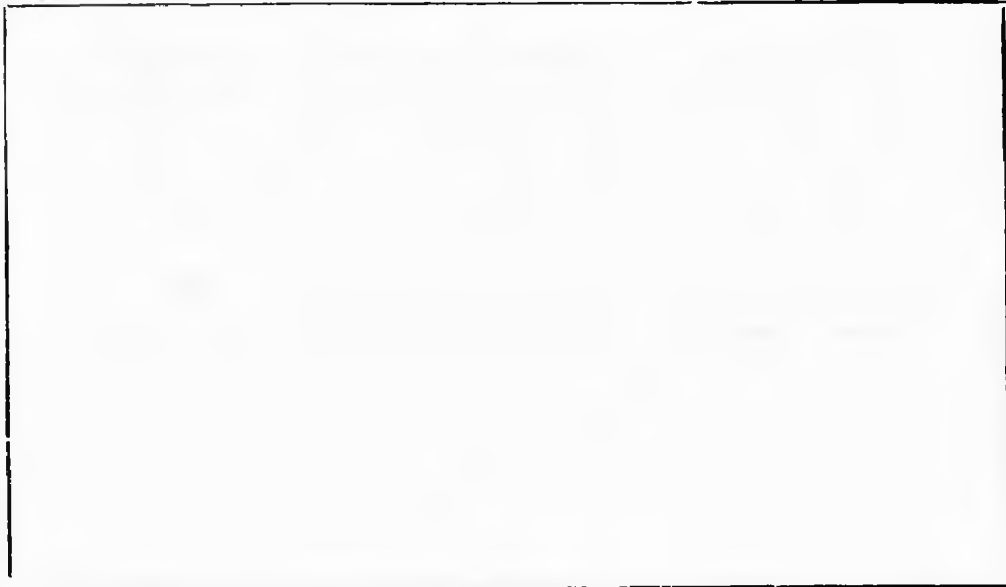


One anna.

1883.

No. 56.—Envelope Stamp (Circular.) Half Anna—dark green.

Same as No. 38, but with the stamp in dark green, instead of in blue, so as to accord with the regulations of the International Postal Convention, wherein it is provided that stamps of the value of a half-penny should be printed in green.



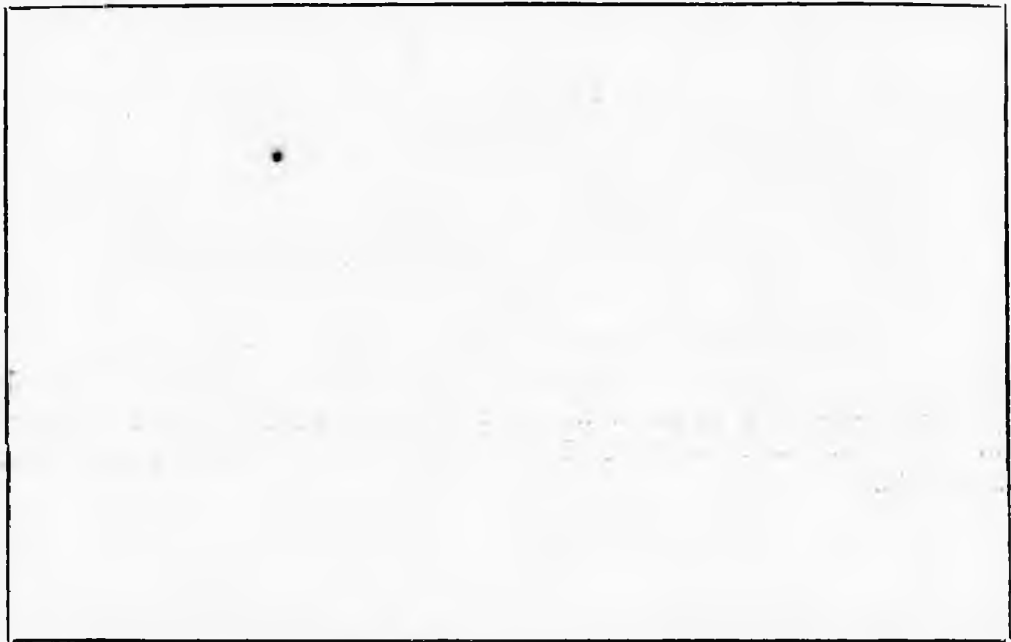
Half anna.

No. 57.—Inland Single Service Post Card Stamp. Quarter Anna.—blue.

Early in the year 1883, a superior description of Service Post Card to No. 42 was prepared in this country and issued. Plain white card, with blue stamp in right hand corner.

Description of stamp.—Profile head of Queen, with diadem facing to left, on plain blue ground, in circular band, surrounded by ornamental border, letters I and E in upper corners—"On Her Majesty's Service" in band surrounding Queen's head, and "Quarter Anna" in straight band at bottom.

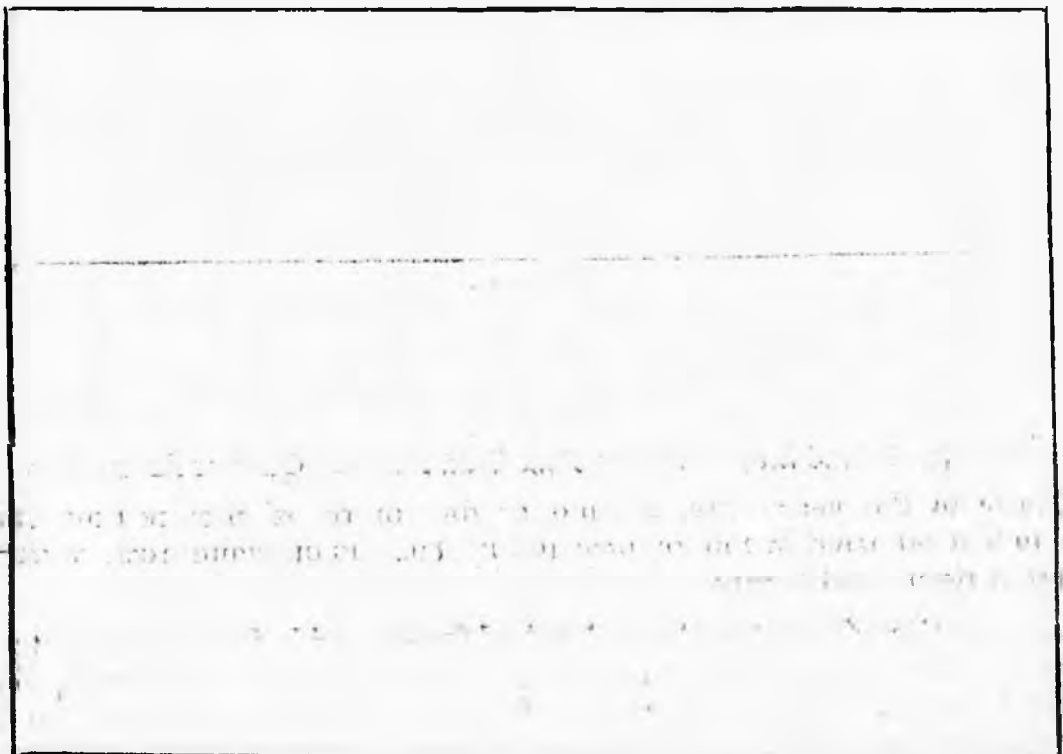
In addition to the stamp the card bears the following lettering at the head, in blue. "East India Service Post Card" "(The Official signature and designation of the sender must be written on the reverse)."



Quarter anna.

No. 58.—Inland Reply Post Card Stamp. Quarter Anna.—*brown.*

Same as No. 40, the card, however, being double, with a perforated hinge, the front card, in addition to the lettering described under No. 40, bearing the words "The annexed card is intended for the answer," and the back card the word "Reply." These cards are of the size of the International Cards (No. 59).



No. 59.—International Reply Post Card Stamp. One and a half anna.—blue.

Same as No. 41, the card, however, being double, with a perforated hinge. The front card bears the following lettering at the head :—

Universal Postal Union.
British India.
Post Card.

Union Postale Universelle.
Inde Britannique.
Carte Postale

The address only to be written on
this side

Ce côté est réservé exclusivement
à l'addressee.

and at the foot :—

The annexed card is intended for the answer.

(La Carte ci-jointe est destinée à la réponse.)

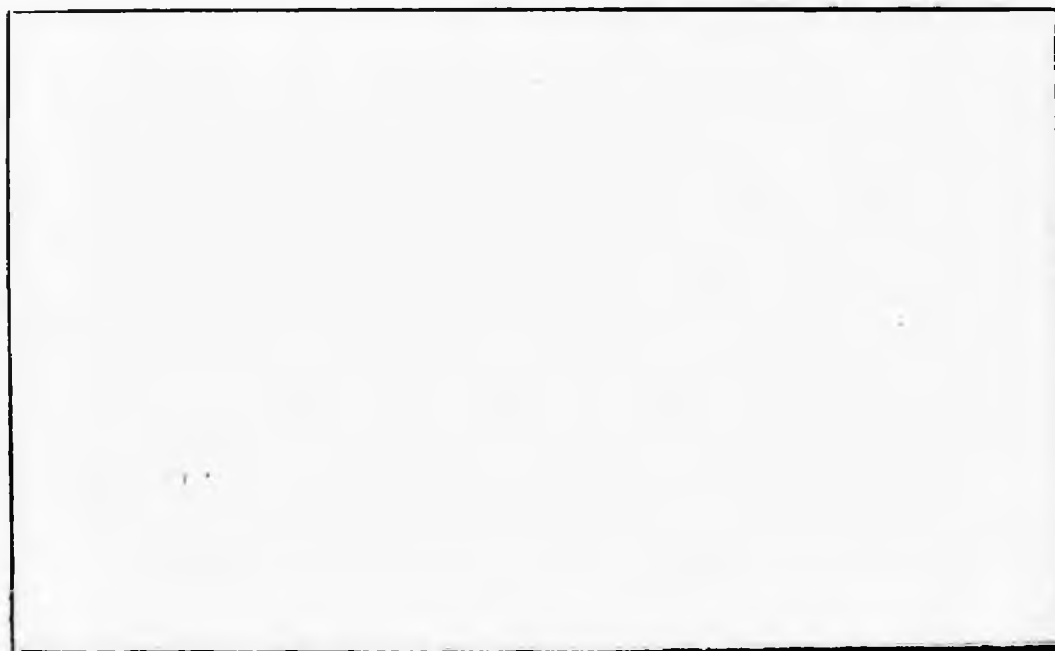
The back card bears the same heading, with the addition of the words "Reply," "Réponse," and does not bear the foot-note.



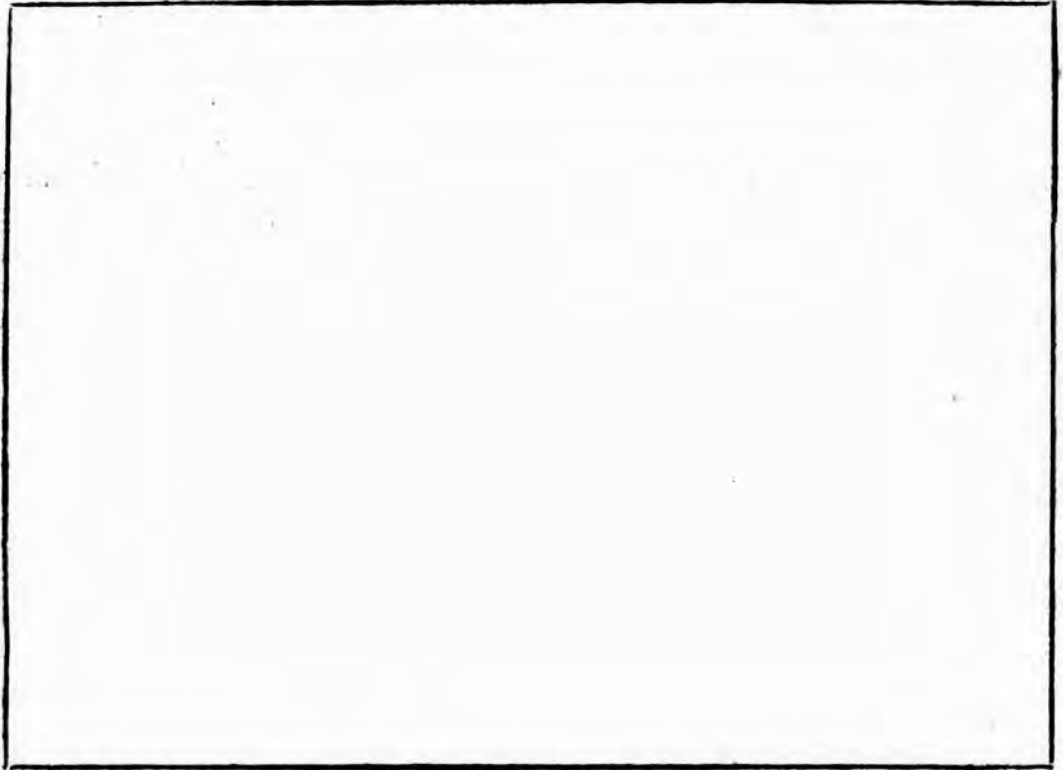
1884.

No. 60.—Inland Reply Post Card Stamp. Quarter anna.—brown.

Same as No. 58, but without perforated hinge and size of card reduced to size of inland single post card, No. 40.



No. 6r.—International Reply Post Card Stamp. One and a half anna—*blue*.
The same as No. 59, but double card without perforated hinge.



OFFICE OF DIRECTOR GENERAL }
OF POST OFFICE ;
August 1884.

G. J. HYNES,
Asst. Director-General of the
Post Office of India.

