

Bibliotheca Göttingiana.

PHILATELIC SECTION.



vol. 144.



Graves 709 46

The Postage Stamps of Mexico

**A Check List
Outlining the Arrangement
of a Collection**

PRICE 10c

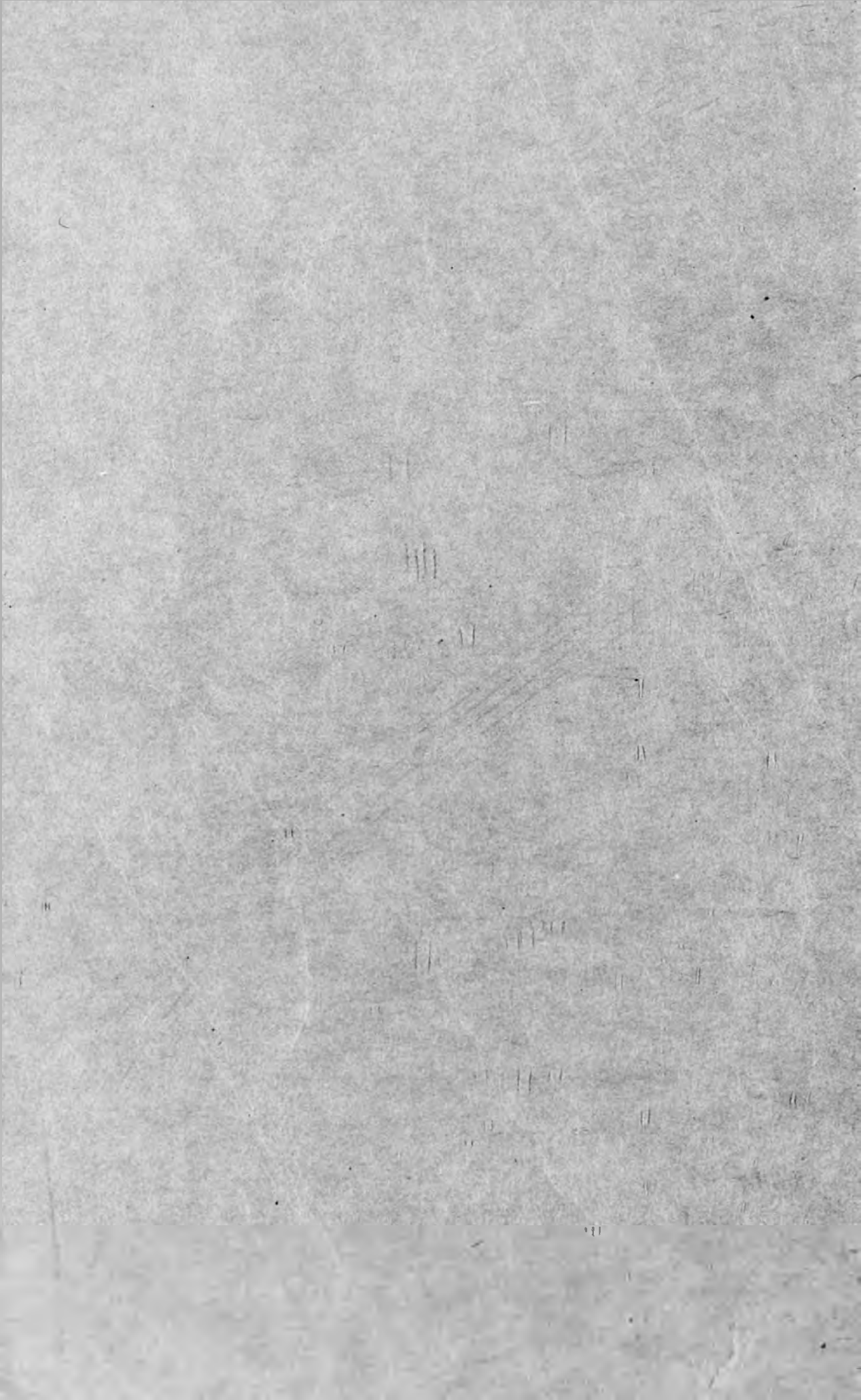
The numbers and prices of Gibbon's Catalogue are followed because it has the best list of Mexican Stamps in the English Language.



My Prices of Mexican Stamps will be furnished in a separate price list. can supply most of the varieties **used**, at 50% Discount, and **unused**, at 25% Discount from Gibbons.

C. H. MEKEEL
Stamp Dealer and Publisher
R. F. D. 29
St. Louis, Mo., U. S. A.

[1912].



The Postage Stamps of Mexico

Issue of 1856



Portrait of Hidalgo—Imperforate.

No.		Unused.	Used.
1.	½r., deep blue	\$ 2.75	\$ 0.75
2.	½r., blue	2.50	.62
3.	½r., pale blue	3.12	.37
4.	1r., buff orange	3.75	.32
5.	1r., orange yellow	2.50	.37
6.	1r., yellow50
7.	2r., sap green	1.25
8.	2r., emerald green	1.50
9.	2r., blue green	5.00	1.50
10.	2r., green	3.00	.25
11.	2r., deep yellow green	3.00	.50
12.	2r., pale yellow green	2.50	.25
13.	4r., carmine vermilion	5.00	2.50
14.	4r., dull vermilion	5.00	2.50
15.	8r., gray lilac
16.	8r., violet	15.00	12.50
17.	8r., reddish-lilac	12.50	10.00

The names of 51 postal districts are found overprinted upon this issue, varieties of type exist, usually in black, sometimes in blue and red.

Stamps without overprints are accidents, classed as sub-varieties.

Fractional parts of the higher values were used provisionally.

Issue of 1861

Same Type as 1856—Imperforate.

No.		Unused.	Used.
26.	½r., black on orange buff	\$.....	\$.....
27.	½r., grayish black on brown	3.75	2.00
28.	½r., grayish black on drab	5.00	3.12
29.	1r., black on green87
30.	1r., grayish black on green	3.12	.37
31.	2r., black on rose62
32.	2r., black on lilac-rose	2.50	.62
33.	2r., grayish black on lilac-rose12
34.	4r., black on yellow	7.50	3.18
35.	4r., grayish black on yellow	7.50	2.62
36.	4r., dull rose on yellow	10.00	3.12
37.	8r., black on brown	12.50	7.50
38.	8r., green on brown	15.00	8.25

The names of 41 postal districts are found overprinted upon this issue. Stamps without overprint were issued accidentally. Fractional parts of the higher values were used provisionally.

Issue of 1863



Portrait of Hidalgo—Perforated 12.

No.		Unused.	Used.
46.	1r., red	\$ 0.02
47.	2r., blue	.02
48.	4r., brown	.02
49.	1p., black	.12

Above are remainders, without overprint. Very few were used. Those that were issued bore the overprints of Chihuahua, Monterrey and Saltillo, used copies are worth about \$50.00 each. The ½ on 1 real, catalogued by Scott, is bogus.

Issue of 1864



Mexican Arms—Imperforated.

(Empire 1864-1867.)

May-June, 1864. Overprinted with District name only:

No.		Unused.	Used.
50.	½r., brown	\$18.25	\$ 8.25
51.	1r., ultramarine	8.25	2.62
52.	2r., orange	10.00	.87
53.	4r., green	7.50
54.	8r., red	17.50

July-Sept. 19, 1864. Overprinted with District name, and also consignment numbers and date in large thick figures:

No.		Unused.	Used.
55.	½r., brown	\$.....	\$.....
56.	½r., dull purple	11.25
57.	1r., ultramarine	12.50	3.00
58.	1r., dull ultramarine	3.75
59.	2r., orange yellow75
60.	4r., deep green	5.00
61.	8r., red	12.50

Sept. 1864-July, 1866. Overprinted with District name, and also consignment numbers and date in small figures.

No.		Unused.	Used.
62.	3c., yellow brown (1865)	\$40.00	\$60.00
63.	½r., reddish purple	7.50	6.25
64.	½r., grayish lilac	7.50	5.00
65.	½r., gray	6.25	5.62
66.	1r., dull ultramarine	1.87
67.	1r., deep blue	5.00	.62
68.	1r., blue	3.75	.62
69.	2r., orange	1.25	1.12
70.	2r., yellow62
71.	4r., green	1.50
72.	4r., pale green	7.50	1.50
73.	8r., carmine red	12.50	3.12
74.	8r., vermilion	8.25	3.12

The names of 25 postal districts are found overprinted on this issue. A "sub-consignment" number exists on some of these stamps and they are sought by specialists, being worth about three times the price of the regular varieties.

Fractional parts of the higher values were used provisionally.

The unused stamps without overprint are remainders, and are valued as follows:

75.	3c., yellow brown	\$22.50
75a.	½r., brown
76.	½r., lilac	2.75
77.	½r., reddish-purple	2.50
78.	1r., blue	1.00
79.	1r., pale blue75
80.	2r., orange-yellow	1.25
81.	2r., yellow
82.	4r., green	1.00
83.	8r., vermilion	1.50

Issue of 1866



Profile of Emperor Maximilian Lithographed—Imperforate.

Three series can be formed as follows:

A. Overprinted with name only (5 Postal Districts).

B. Overprinted with number and date only.

C. Overprinted with name and numbers (32 Postal Districts).

Sub-consignment numbers are also found on this issue. The prices quoted are for the commonest varieties.

No.		Unused.	Used.
84.	7c., deep blue-gray	\$ 8.75	\$ 7.50
85.	7c., pale pearl-gray	3.12	3.75
86.	13c., blue	3.75	2.50
87.	13c., deep blue	3.12
88.	13c., indigo	2.12	2.00
89.	25c., dull yellow	1.00	.50
90.	25c., buff37
91.	25c., deep brown	1.50	2.50
91a.	25c., orange-red	3.75
92.	25c., orange-brown	3.12	1.25
93.	50c., yellow-green	1.12	2.12
94.	50c., blue-green	1.62	2.37



Engraved—Imperforate.

No.		Unused.	Used.
95.	7c., lilac-purple	7.50
96.	13c., blue	1.12	1.50
97.	25c., orange-brown	.37	.50
98.	50c., green	3.12

The unused stamps without overprints are remainders.

99.	7c., lilac-purple	\$ 0.87
100.	13c., blue25
101.	25c., orange-brown25
102.	50c., green50

Issue of 1867



Portrait of Hidalgo—Imperforate.

Reissued with "Mexico" Overprinted in Gothic Type.

No.		Unused.	Used.
103.	½r., black on orange brown	\$25.00
104.	1r., black on green	8.75	1.87
105.	2r., black on lilac-rose	3.75	.87
106.	4r., vermilion on yellow	22.50	1.87
108.	8r., black on brown	12.50
109.	8r., green on brown

Same Type on Thin Bluish Paper.

R. P. S. In large double-lined letters appears as a watermark in this paper, fragments of the watermarks sometimes show in stamps.

No.		Unused.	Used.
110.	½r., gray	\$20.00	\$22.50
111.	½r., grayish-green	35.00
112.	1r., pale blue	5.62
113.	2r., blue-green	8.75	1.75
114.	4r., rose	8.75

Issue of 1868



Portrait of Hidalgo.

Early printings of this issue had thin figures of value, some poorly formed. Later printings had thicker figures of value usually followed by a period. This issue is overprinted with name, number and abbreviated date.

A. Thin figures of value.
Imperforate

No.		Unused.	Used.
115.	6c., black on orange-brown	\$ 1.50	\$ 0.62
116.	12c., black on green.....	1.87	1.25
117.	25c., blue on pink.....	2.50	1.00
118.	50c., black on yellow....	7.50	3.12
119.	100c., black on brown....	5.09
120.	100c., brown on brown....	12.50

Perforated.

Four varieties of perforation are to be found:

- (a) Pin perforation, 13, 14 and 15.
- (b) Square hole.
- (c) Saw tooth.
- (d) Ordinary 12 clear cut.

Prices are for commonest varieties.

No.		Unused.	Used.
121.	6c., black on orange-brown	\$ 1.25	\$ 0.67
122.	12c., black on green.....	1.50	.50
123.	25c., blue on pink.....	7.50	.50
124.	50c., black on yellow....	7.50	1.25
125.	100c., black on red-brown	10.00	2.50
126.	100c., brown on red-brown	10.09



Perforated.

See above note on the four perforation No. Unused. Used varieties.

133.	6c., black on orange-brown	\$ 1.88	\$ 1.25
134.	12c., black on yellow-green50	.30
135.	12c., black on blue-green
136.	25c., blue on pink.....	3.12	.12
137.	50c., black on yellow....	8.75	1.25
138.	100c., black on red-brown	8.75	2.12

Errors—12c. in color of the 6c. and 50c. in color of the 25c. are known. Mis-formed numerals in the 25c. show an 85c. and a 100c. is known as 110c. Varieties of the thick numeral without the periods are to be found.

A very thin, almost pelure paper and a very thick paper, furnish additional paper varieties to look for in this series.

The names of 43 postal districts are found overprinted on this issue; also "Habilitado" varieties and reissues.

Provisional Issue of 1872

The issue of 1868 was reissued after being withdrawn, with the word "Anotado" in black.

Imperforate.

No.		Unused.	Used.
139.	6c., black on orange-brown	\$12.50	\$.....
140.	12c., black on yellow-green	1.00	1.57
141.	12c., black on blue-green75	7.50
142.	25c., blue on pink.....	1.87	2.59
143.	50c., black on yellow....	10.09
144.	100c., black on red-brown

Perforated.

145.	6c., black on orange-brown	\$.....	\$.....
146.	12c., black on yellow-green	3.75
147.	25c., blue on pink.....	2.12	5.00
148.	50c., black on yellow....
149.	100c., black on red-brown.

The names of 27 postal districts are found over-printed on this provisional issue.

Issue of 1872



Profile of Hidalgo.

Moire pattern on the back in blue

Imperforate.

No.		Unused.	Used.
150.	6c., green	\$ 0.25	\$ 0.37
151.	12c., blue25	.18
152.	25c., red25	.12
153.	50c., buff	1.87
153b.	50c., blue (not issued)...	15.00
154.	100c., gray-blue	7.50	2.50

B. Thick figures of value.
Imperforate.

No.		Unused.	Used.
127.	6c., black on orange-brown	\$ 0.30	\$ 0.25
128.	12c., black on yellow-green25	.12
129.	12c., black on blue-green
130.	25c., blue on pink.....	1.00	.12
131.	50c., black on yellow....	7.50	.75
132.	100c., black on red-brown	7.50	1.50

Perforated.

Four perforations are to be found:

- (a) Pin perforation, 13, 14 and 15.
- (b) Square hole.
- (c) Saw tooth.
- (d) Ordinary 12 clear cut.

Prices are for the commonest varieties.

No.		Unused.	Used.
155.	6c., green	\$ 2.50	\$ 2.50
156.	12c., blue	.62	.50
157.	25c., red	.50	.25
158.	50c., yellow	7.50	2.50
158a.	50c., blue (not issued)	7.50	
159.	100c., gray-lilac	3.75	2.50

The 50c. blue was prepared for use but not issued, it exists as a remainder rather than as an error.

Varieties without the blue moire pattern on the back exist.

Varieties on laid paper, and upon a wove paper with a watermark "Papel Sellado" in single lined script letters, are to be found, as well as a French papermaker's watermark.

The so-called reprints mentioned by Scott's catalogue are counterfeits.

The names of 51 postal districts are found overprinted on this issue, with number and abbreviated dates. The numbers and dates are also found without names.

Issue of 1874



Profiles of Hidalgo in Various Frames.

Engraved by the American Bank Note Co. (a) Postal District numbers and the abbreviated date wide apart. Both with and without overprinted name.

No.		Unused.	Used.
176.	5c., brown	\$ 0.12	\$ 0.10
177.	10c., black	.12	.08
178.	25c., blue	.08	.02
180.	50c., green	.25	.16
181.	100c., rose	.37	.25

Varieties of paper, show wove, vertically and horizontally (close and wide) laid, and paper in which "Papel Sellado" watermark appears in the sheet.

(b) Postal District numbers and date close together. Both with and without overprinted name.

No.		Unused.	Used.
185.	4c., orange	\$ 0.37	\$ 0.18
186.	5c., red-brown	.18	.08
187.	10c., black		1.25
188.	10c., orange	.18	.04
189.	25c., blue	.25	.04
191.	50c., blue-green	.37	.18
192.	100c., carmine-rose	.37	.25

Paper, thick wove and fine laid, also varieties of the 5c. on thick horizontally wide laid paper.

Late printings of this issue were made in Mexico at the Government printing office from plates sent from New York.

The following varieties are on very thin wove paper:

No.		Unused.	Used.
193.	4c., orange	\$ 1.25	\$ 0.62
194.	5c., brown	1.00	.37
195.	10c., orange	.62	.06
197.	25c., blue	.50	.08
198.	25c., indigo	.25	.25
199.	50c., blue-green	.75	.43
201.	100c., carmine	.75	.62
202.	100c., crimson	1.50	.75

The names of 62 postal districts are found overprinted on this issue with numbers and abbreviated dates. The numbers and dates are also found without names.

Issue of 1879



Portrait of Carlos Benito Juarez.

Issued for Foreign Postage only.

(a) With number and abbreviated date overprinted only.

(b) Name, number and abbreviated date.

Thick vertically laid and wove paper.

No.		Unused.	Used.
203.	1c., brown	\$ 0.10	\$ 0.10
204.	2c., deep violet	.15	.15
205.	5c., orange	.08	.08
206.	10c., blue	.10	.10
207.	25c., carmine	.25	.18
208.	50c., green	.50	.50
209.	85c., violet	.62	.62
210.	100c., black	.75	.75

The four following varieties are remainders without overprint:

No.		Unused.	Used.
210a.	25c., carmine	\$ 0.08
210b.	50c., green	.20
210c.	85c., violet	.35
210d.	100c., black	.40

Very thin paper, overprinted (a) and (b) as above.

211.	1c., brown	.50	.25
212.	2c., deep violet	.75	.50
212a.	2c., slate
213.	5c., orange	.12	.10
214.	10c., blue	.12	.03
215.	25c., rose	1.00	1.00
216.	50c., green	1.25	1.50
216a.	50c., blue green	2.00	2.50
217.	85c., mauve (not issued)
218.	100c., black	1.50	2.00

The names of 58 postal districts are found overprinted on this issue.

Varieties prepared, but not issued:

221.	10c., brown	.18
221a.	10c., brown (imperforate)	.18
222.	25c., red brown	.37

Remainders without overprint.

218a.	1c., brown
218b.	2c., deep violet
218c.	2c., slate
218d.	5c., orange	.12
218e.	10c., blue	.08
218f.	25c., rose	.37
219.	50c., green	.50
219a.	85c., mauve	.75
220.	100c., black	.50

Issue of 1882

Same Type as 1879.

Overprinted same as 1879 issue.

No.		Unused.	Used.
223.	12c., brown	\$ 0.08	\$ 0.08
224.	18c., chestnut	.12	.12
225.	24c., mauve	.12	.18
226.	50c., yellows	3.75	3.75
227.	100c., orange	3.00	5.00



Numeral Type.

230.	2c., green	.16	.16
231.	3c., carmine lake	.12	.10
232.	6c., blue	.18	.16
233a.	6c. ultramarine (Imperf.)	5.00

Overprinting of Mexican stamps ceased in 1883.

Issue of 1884



Profile of Hidalgo.

PERFORATED 12.

No.		Unused.	Used.
234.	1c., green	\$ 0.04	\$ 0.01
235.	2c., green	.06	.04
236.	3c., green	.08	.02
237.	4c., green	.12	.06
238.	5c., green	.16	.09
239.	6c., green	.25	.03
240.	10c., green	.25	.04
241.	12c., green	.50	.12
242.	20c., green	.50	.05
243.	25c., green18
244.	50c., green	.25	.1.
245.	1p., blue	.25	.15
246.	2p., blue	.50	.37
247.	5p., blue	7.50	6.25
248.	10p., blue	15.00	7.50

Error of Color.

249.	1c., blue
------	-----------	------	------

Imperforate.

260.	1c., green	\$ 0.62
261.	1c., green	.87
262.	10c., green	.62
264.	50c., green50
265.	1p., blue	1.87

Varieties perforated 11, 11½ and 12x11 have been found worth about \$2.50 each.

Wave and laid variations of paper are found in these stamps, in the same sheets.

Various printings produced many shades of green in some values of this issue.

ISSUE OF 1885.

Same Type as 1884 Issue.

PERFORATED 12.

No.		Unused.	Used.
266.	1c., pale green	\$ 1.25	\$ 0.25
267.	2c., carmine	.18	.06
268.	3c., red-brown	.18	.12
269.	4c., red-orange	1.50	.75
270.	5c., blue	.25	.06
271.	6c., dark brown	.37	.12
272.	10c., orange08
273.	10c., yellow	.50	.06
274.	12c., olive-brown	.75	.25
275.	25c., pale blue	2.50	1.25

PERFORATED 11.

278.	10c., yellow	3.75	1.50
------	--------------	------	------

Other values with this perforation probably exist.

Numeral Issue

Ruled Paper.
Paper ruled with blue lines front or back or on both sides.



NUMERAL ISSUE—1886.



Wove paper, no watermark.

PERFORATED 12.

No.		Unused.	Used.
279.	1c., yellow-green	\$ 0.12	\$ 0.04
280.	2c., lake	.12	.06
281.	3c., lilac	.37	.12
282.	4c., lilac	.50	.25
283.	5c., ultramarine	.37	.02
284.	6c., lilac	.37	.18
285.	10c., lilac	.37	.02
286.	12c., lilac	.50	.25
287.	20c., lilac	7.50	5.00

Above stamp on watermarked paper is a reprint.

288.	25c., lilac	1.25	.50
------	-------------	------	-----

PERFORATED 11.

289.	2c., lake
290.	4c., lilac
291.	10c., lilac	...	2.50

1887.

Same with new colors.

Wove paper, no watermark.

PERFORATED 12.

No.		Unused.	Used.
292.	1c., blue green	\$ 0.08	\$ 0.02
293.	3c., scarlet	.12	.04
294.	4c., scarlet	.37	.06
295.	6c., scarlet	.50	.04
296.	10c., scarlet	.25	.02
297.	20c., scarlet	1.87	.16
298.	25c., scarlet	.75	.16

PERFORATED 6.

299.	1c., green25
300.	2c., lake	1.25	.37
301.	5c., ultramarine	.62	.25
302.	10c., lilac	.62	.08
303.	10c., scarlet62

PERFORATED 12 AND 6 COMPOUND

No.		Unused.	Used.
304.	1c., green	\$ 5.00	...
305.	2c., lake
306.	5c., ultramarine
307.	10c., lilac	3.75	...
307a.	10c., scarlet

PERFORATED 12.

No.		Unused.	Used.
308.	1c., green	\$ 2.50	\$ 1.25
309.	2c., lake	2.00	1.00
310.	5c., ultramarine	2.50	.75
311.	10c., scarlet	3.75	.50

PERFORATED 6.

312.	1c., green	1.25	.25
313.	2c., lake	1.00	.25
314.	5c., ultramarine	.50	.08
315.	10c., lilac	1.00	.08
316.	10c., scarlet	...	2.50

The above five varieties may also be found with perforation 12 and 6 compound.

The 2c with surcharge "Vale 1 Coo" included in Scott's catalogue is not a governmental issue.

1890.

Paper watermarked "CORREOS EUM" in ten rows on a sheet, so that one letter might come in each stamp.

Owing to large margins and sheets printed out of register marginal stamps are found without watermark.

Sheets of one hundred stamps had only nine rows of perforation vertically and horizontally, the outer edges being imperforate, only 64 stamps in each 100 being perforated on four sides.

Single stamps that are apparently imperforate could easily be the result of trimming two sides.

PERFORATED 12.

(a) Clear cut perforation.

(b) Pin perforation.

Parts of sheets sometimes show laid lines.

No.		Unused.	Used.
322.	1c., yellow-green	\$ 0.06	\$ 0.02
323.	2c., lake	.06	.04
324.	3c., scarlet	.02	.02
325.	4c., scarlet	.25	.05
326.	5c., ultramarine	.18	.02
327.	6c., scarlet	.15	.06
328.	10c., scarlet	.37	.02
329.	20c., scarlet	.25	.25
330.	25c., scarlet	.50	.12

PERFORATED 11.

331.	1c., yellow-green	1.87	1.50
332.	2c., lake	.18	.18
333.	3c., scarlet	1.00	.75
334.	4c., scarlet	...	3.75
335.	5c., ultramarine	...	1.25
336.	6c., scarlet	...	1.25
337.	10c., scarlet50
338.	20c., scarlet	1.00	1.25
339.	25c., scarlet	1.50	...

MEXICO

1892.

Some colors changed.

PERFORATED 12.

No.		Unused	Used.
340.	1c., blue-green	\$ 0.06	\$ 0.06
341.	2c., rose-lake	.62	.06
342.	3c., orange	.12	.06
343.	4c., orange	.25	.18
344.	6c., orange	.37	.18
345.	10c., orange	.62	.02
346.	20c., orange50
347.	25c., orange	1.50	.18

PERFORATED 11.

348.	1c., blue-green	.62
------	-----------------	-----	------

1892 PESO VALUES.

Type of 1884.

349.	5p., blue-green	\$31.25
250.	10p., blue-green

NUMERAL TYPE.

351.	5p., crimson	\$25.00	\$22.50
352.	10p., crimson	43.75

1893-95.

Thin, Hard Paper.

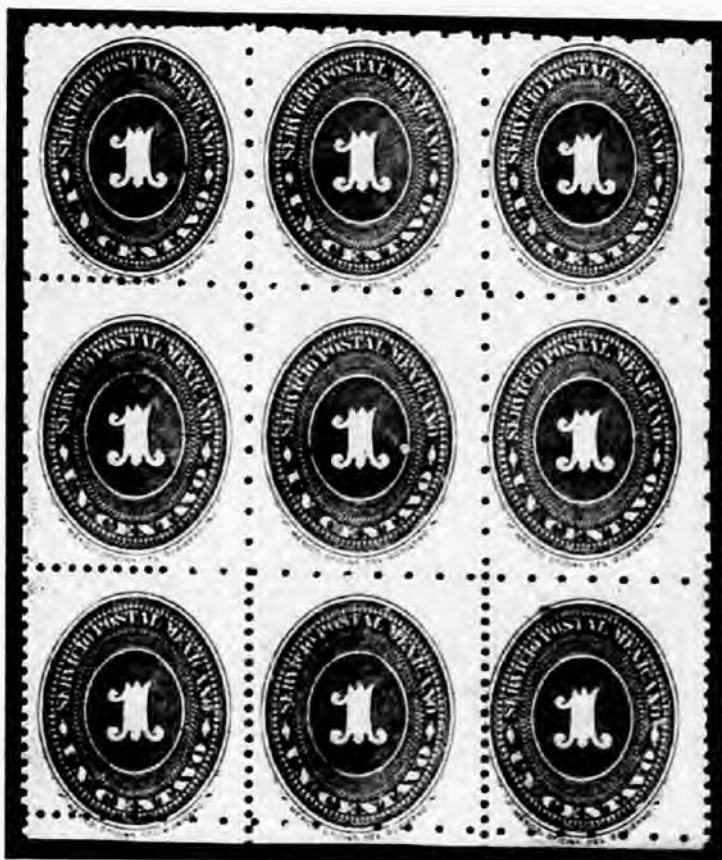
Same watermark of letters, paper often shows traces of laid lines.

PERFORATED 12.

No.		Unused	Used
353.	1c., green	\$ 0.04	\$ 0.02
354.	2c., lake	.37	.08
355.	2c., brown-lake	.62	.25
356.	3c., scarlet	.12	.12
357.	4c., scarlet	.59	.18
358.	5c., pale-blue	.25	.25
358a.	5c., blue	.06	.02
359.	5c., ultramarine	.12	.12
360.	6c., scarlet	.37	.25
361.	10c., scarlet	.06	.02
362.	12c., scarlet	.62	1.00
363.	20c., scarlet	.12	.12
364.	25c., scarlet	.18	.12

PERFORATED 11.

365.	1c., green	.62	.50
366.	2c., lake	1.00	.37
367.	3c., scarlet	1.87	1.87
368.	4c., scarlet	2.50
369.	5c., ultramarine	1.00	.50
370.	6c., scarlet	1.00	.50
371.	10c., scarlet	.75	.08
372.	20c., scarlet	2.50	1.9
373.	25c., scarlet	1.25	.50



Block showing Perforations 11 and 5½ singles, compound and irregular.

PERFORATED 5½.

No.		Unused.	Used.
374.	1c., green	1.50	.62
375.	3c., scarlet	1.00
376.	4c., scarlet	1.25	1.25
377.	5c., ultramarine	.75	.25
378.	10c., scarlet	.37	.12
379.	25c., scarlet	2.50

PERFORATED 5½ AND 11 COMPOUND.

380.	1c., green	1.87	1.25
381.	3c., scarlet
382.	5c., ultramarine	1.25	1.00
383.	10c., scarlet	1.25	.37
384.	25c., scarlet	1.25

1895 Pictorial Issue

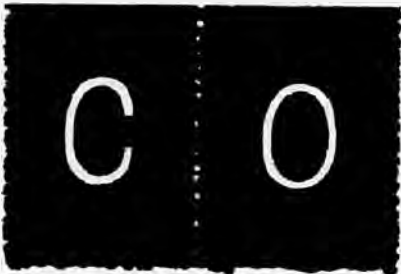
ISSUE OF 1895-98.

Pictorial issue (designs illustrated under official stamps).

Paper watermarked letters as last issue, some showing traces of laid lines.

PERFORATED 12.

- (a) Pin perforation.
- (b) Clean cut perforation.



Pin Perforation



Clear Cut Perforation

No.		Unused.	Used.
385.	1c., green	\$ 0.04	\$ 0.02
386.	2c., carmine	.04	.02
387.	2c., scarlet	.04	.02
388.	3c., chestnut	.08	.02
389.	4c., orange-red	.18	.12
390.	4c., orange	.18	.12
391.	5c., ultramarine	.12	.02
392.	10c., lilac-rose	.16	.04
393.	12c., olive-brown	.50	.25
394.	12c., chestnut (error)
395.	15c., greenish blue	.25	.18
396.	20c., brown rose	.50	.08
397.	50c., purple	1.00	.62
398.	1p., brown	1.87	1.60
399.	5p., rose-red	5.00	3.12
400.	10p., blue	6.25

Series of 13 values were printed in black as specimens for Universal Postal Union. Classified as finished proofs. 1c. to 10 pesos complete series, \$25.00.

1896-97.

Watermarked "R. M." in a monogram.



PERFORATED 12.

No.		Unused.	Used.
411.	1c., green	\$ 0.02	\$ 0.02
412.	2c., carmine	.06	.02
413.	2c., scarlet
414.	3c., chestnut	.12	.08
415.	4c., orange	.25	.06
416.	5c., ultramarine	.08	.02
417.	12c., olive-brown	.25	.25
418.	15c., greenish-blue	1.25	.50
419.	20c., brown rose	1.50	.62
420.	50c., purple	1.25
421.	1p., brown	2.50
422.	5p., rose-red
423.	10p., blue	7.50

1897.

Watermarked "Eagle & R. M." in Roman Capitals.



PERFORATED 12.

No.		Unused.	Used.
433.	1c., green	\$ 0.04	\$ 0.04
434.	2c., scarlet	.06	.04
435.	4c., orange	.12	.08
436.	5c., ultramarine	.25	.12
437.	12c., olive-brown	.37	.25
438.	15c., greenish-blue	1.00	.37
439.	20c., brown rose	1.00	.37
440.	50c., purple	1.50	1.00
441.	1p., brown	1.25
442.	5p., rose-red
443.	10p., blue

1898.

Wove paper unwatermarked, PERFORATED 12.

No.		Unused.	Used.
456.	1c., green	\$ 0.04	\$ 0.02
457.	2c., carmine-red	.06	.05
458.	3c., chestnut	.08	.04
459.	4c., orange	.12	.08
460.	5c., ultramarine	.12	.02
461.	10c., lilac-rose	.50	.25
462.	12c., olive-brown	.37
463.	15c., greenish-blue	.30	.18
464.	20c., brown-rose	.30	.18
465.	50c., purple50
466.	1p., brown	1.50	1.25
467.	5p., rose-red	5.00
468.	10p., blue
Error of Color.			
469.	2c., green

Varieties of perforation may be found in the series 1895-1898. Perforation 6, 6 and 12, compound and irregular, as shown by our outline illustrations. They are very scarce. Gibbons' 21st Edition only priced one.



Compound 6x12 Perf.



Irregular 6 and 12 Perf.

PERFORATED 6 AND 12 COMPOUND AND IRREGULAR.

No.	Unused.	Used.
476. 5c., ultramarine	\$ 3.75	

Issue of 1899-1903



PERFORATED 14.
1899.

No.		Unused.	Used.
480. 1c., green		\$ 0.04	\$ 0.02
481. 2c., vermilion04	.02
482. 3c., orange-brown04	.02
484. 5c., blue08	.02
485. 10c., violet and orange...		.12	.03
486. 15c., lavender and claret		.12	.08
487. 20c., blue and rose.....		.18	.05
488. 50c., blue and black....		.62	.14
490. 1p., blue and black....	1.00		.15
491. 5p., carmine and black.	4.00		1.25
1903.			
492. 1c., deep purple02	.02
493. 2c., green02	.02
483. 4c., carmine08	.04
494. 5c., orange04	.02
495. 10c., blue and orange...		.08	.02
489. 50c., rose and black....		.62	.10

Issue of 1910

Commemorative of One Hundredth Anniversary of Mexican Independence.



Engraved and printed by Bradbury, Wilkinson & Co., London.

Watermarked "Servicio Postal de Los Estados Unidos Mexicanos" in single lined capitals in parallel diagonal lines across the sheet.



Mexico, now being in a State of Revolution, its political future can be only a matter of conjecture. Whatever may happen—The Postal issues of Mexico are sure to be of great interest to collectors of American stamps. To those who are now laying out new album pages, this Check List is particularly dedicated.

Official Stamps

Issue of 1884-94



Profile of Hidalgo.

No.	No watermark.	Perforated 12.	Unused.	Used.
601.	Scarlet (1884)	\$ 0.08	\$ 0.04
602.	Olive-brown (1887)06	.02
603.	Orange (1888)12	.02
605.	Green (1893)06	.06

Perforated 6.

602a.	Olive-brown25
Blue Ruled Lines. Perforated 6.				
602b.	Olive-brown

Watermarked "Correos E. U. M." on every line of stamps (1894).

606.	Ultramarine (Perf. 12)	\$ 0.04	\$ 0.04
607.	Ultramarine (Perf. 11)
608.	Ultramarine (Perf. 5½)25	.18
609.	Ultramarine (Perf. 5½ x 11)	1.00	.25

Made in England; same engravers, watermark and perforation as last issue.

No.		Unused.	Used.
496.	1c., dull purple \$ 0.02
497.	2c., green0302
498.	3c., chestnut04
499.	4c., carmine04
500.	5c., orange0401
501.	10c., blue and orange0802
502.	15c., gray-blue and claret12
503.	20c., red and blue16
504.	50c., red-brown and black37
505.	1p., blue and black75
506.	5p., carmine and black 3.75



Issue of 1895

Regular Issue Overprinted "OFICIAL" in Black.

PERFORATED 12.

(a) Typographed.
(b) Handstamped.

No.		Unused.	Used.
611.	1c., green	\$ 0.18	\$ 0.12
612.	2c., carmine	.18	.12
613.	3c., chestnut		.25
614.	4c., orange-red		.37
615.	5c., ultramarine		.25
616.	10c., lilac-rose	.50	.25
617.	12c., olive-brown		.50
618.	15c., greenish-blue		.62
619.	20c., brown-rose	1.00	.62
620.	25c., purple		1.50
621.	50c., brown		
622.	1p., rose-red		
623.	5p., blue		
624.	10p., blue		

Same Overprint "OFICIAL" in Red.

PERFORATED 12.

(a) Typographed.
(b) Handstamped.

No.		Unused.	Used.
625.	1c., green	\$ 0.25
626.	2c., carmine	.25
627.	3c., chestnut	.25
628.	4c., orange-red	.50
629.	5c., ultramarine	.50
630.	10c., lilac-rose	.50
631.	12c., olive-brown	.75
632.	15c., greenish blue	.75
633.	20c., brown-rose	.75
634.	50c., purple	1.00

Complete series of 13 values, 1c. to 10 pesos, printed in black on regular paper. Overprinted "OFICIAL" in red. Prepared as specimens for Universal Postal Union. (Classed as Finished Proofs.) \$25.00.

1896-97.

Overprint "OFICIAL" handstamped in black. Watermark "R. M." in monogram.



Issue of 1910

Regular issue of 1899 and 1903 overprinted "OFICIAL," typographed horizontally in black.



No.		Unused.	Used
634.	1c., green		\$ 1.25
635.	2c., carmine		1.00
636.	3c., chestnut		.87
637.	4c., orange		.87
638.	5c., ultramarine		.75
639.	12c., olive-brown		1.50
639a.	15c., greenish-blue		2.50

1897.

Overprint "OFICIAL" handstamped in black. Watermark "Eagle and R. M."

No.		Unused.	Used.
640.	1c., green		
640a.	2c., carmine		
640b.	4c., orange		
641.	5c., ultramarine		
641a.	15c., greenish-blue		1.25
642.	20c., brown-rose	2.50	1.00
643.	50c., purple		1.00
643a.	1p., brown		

1898.

Overprint "OFICIAL" handstamped in black. Unwatermarked paper.

No.		Unused.	Used
644.	1c., green		\$ 0.25
644a.	2c., vermilion		.75
645.	3c., chestnut		.50
646.	4c., orange		.50
647.	5c., ultramarine		.50
647a.	10c., lilac-rose		
648.	12c., olive-brown		.62
649.	15c., greenish-blue		1.00
649a.	20c., brown-rose		1.25



Issue of 1899-1903

Regular issues of these dates overprinted "OFICIAL," handstamped in black.

1899.

No.		Unused.	Used
650.	1c., green		\$ 0.25
651.	2c., vermilion		.75
652.	3c., chestnut		.08
653.	5c., blue		.25
654.	10c., violet and orange		.25
655.	15c., lavender and claret		.18
656.	20c., blue and rose		.25
657.	50c., lilac and black		.50
658.	1p., blue and black		.75
659.	5p., carmine and black		2.50

1903.

660.	1c., deep purple		.18
661.	2c., green		.12
652a.	4c., carmine		.10
662.	5c., orange		.15
664.	10c., blue and orange		.12
657a.	50c., rose and black		.50

No.		Unused.	Used
666.	2c., green		\$ 0.08
667.	3c., chestnut		.10
668.	4c., carmine		.12
669.	5c., orange		
670.	10c., blue and orange		.25
671.	15c., gray-blue and claret		.25
672.	20c., red and blue		.25
673.	50c., red-brown and black		.50
674.	5p., carmine and black		3.12

Regular issue of 1909 overprinted same as last. Typographed horizontally in black.

675.	1c. dull purple		
676.	2c. green		
677.	3c. chestnut		
678.	4c. carmine		
679.	5c. orange		
680.	10c. blue and orange		
681.	15c. gray-blue and claret		
682.	20c. red and blue		
683.	50c. red-brown and black		
684.	1p. blue and black		
685.	5p. carmine and black		

