

1907

# The Stamp Collectors' Annual,

And  
YEAR-BOOK of PHILATELY.

Edited by  
PERCY C.  
BISHOP

Fourth Year  
of Publication

London:

Charles Nissey & Co.,

7 SOUTHAMPTON ROW, W.C.

PRICE:

1/- Nett.

# SPECIAL NOTICE.

## ONCE AGAIN

PLEASE note that, although we *Specialise* in the Stamps of Great Britain, we *Also Deal* in Stamps of *All other Countries*, Postage, Revenue, Telegraphs, and Envelopes.

Approval Books or Sheets can be sent to responsible Collectors. Write and let us know what your speciality is. We can get you the *Stuff*, and give you satisfaction. Wholesale and Retail.

### WANTED.

We are open to purchase for Cash Large General Collections or Any Country specialized.

### KING'S HEAD STAMPS.

We have a Fine Large Stock of British Colonials, King's Head, wmk., single and multiple on old and new paper, used and unused. Selections on approval.

### FISCALS.

We will purchase all kinds for prompt Cash. Collectors specially wanted. Send Orders, stating Price required.

### VIERT & TELLER'S COMPLETE FISCAL CATALOGUE

Selections of Fiscals sent on approval, or Want-Lists filled at about one half catalogue price. Wholesale and Mixed Lots at very low prices.

WHOLESALE PRICES LISTED IN  
LIST OF FACETS AND WANT-LETS  
SETS OF REVENUES AND  
NISSEN'S MONTHLY CATALOGUE

---

CHAS. NISSEN & CO.  
7 SOUTHAMPTON ROW,  
LONDON, W.C.

Telephone 2444 and 2445.

(Three Doors from High Holborn).





A PAGE OF MAURITIUS,  
From the Collection of H.R.H. the Prince of Wales

Cal'd. in the Crown 888 (4)

THE

# Stamp Collectors' Annual

## 1907.

---

A YEAR-BOOK OF PHILATELY.

EDITED BY PERCY C. BISHOP.

*Editor of the "Stamp Collector's Fortnightly."*

---

COPYRIGHT.

ENTERED AT STATIONERS' HALL.

**London:**

CHAS. NISSEN & CO., 7 SOUTHAMPTON Row, W.C.

# Do you know Mr. E. J. Nankivell

CONTRIBUTES SEVERAL PAGES  
EACH MONTH TO

## THE CAPTAIN

A MAGAZINE  
FOR BOYS & 'OLD BOYS'

6<sup>d</sup>

CONSISTING OF

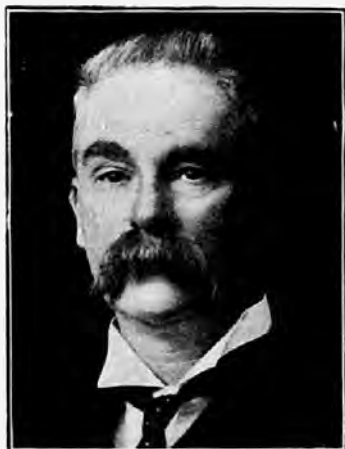
*Helpful Articles on Postage  
Stamp Collecting for  
Beginners  
and General Collectors.*

*Illustrated Biographies of  
Eminent Collectors.*

*Dictionary of Philatelic  
Terms.*

*A Detailed Descriptive and  
Illustrated List  
of Notable New Issues.*

*Answers to Correspondents,  
&c.*



### THE "CAPTAIN"

Is the most popular Magazine of its kind, and appeals to every Public School Boy and Old Boy wherever the English language is spoken.

You must, we think, come to the same conclusion as most of the leading Stamp Dealers have, and regularly take advantage of the Advertising Pages of this 6d. Monthly.

WRITE FOR A FREE COPY AND FULL PARTICULARS.

---

**THE ADVT. MANAGER, GEORGE NEWNES, Ltd.,**  
3-12 SOUTHAMPTON STREET, STRAND, LONDON, W.C.

## P R E F A C E.

---

**I**N this year's Annual we re-commence—and, I hope, will never again omit—the “Index to Philatelic Literature,” which was one of the leading features of the Annual of 1905. In the present issue, however, the contents of the various philatelic periodicals printed in the English language have been merged into one general compilation, forming a handy guide to the philatelic journalistic output for the year 1906. The labour attached to the compilation of such an “Index” is far greater than one would suppose from a glance at the pages of the Annual; nevertheless, I hope, when indexing the journals of 1907 (for the Annual of 1908), to be able to include the European and other foreign journals in order to present a “World's Philatelic Index” for the year.

THE STAMP COLLECTOR'S ANNUAL now approximates more closely to the ideal which my publishers, Messrs. Charles Nissen & Co., and myself had in mind at the time of its inception in 1903—that is to say, it is more of a “Year-Book of Philately” than it has previously been; and our aim in the future will be to make it a complete and faithful record of the year's philatelic happenings, the philatelic literature of the year, the new issues of the year, the auction records of the year, etc., etc. In the present Annual, by the way, there is a notable addition to our list of Societies, the leading British Colonial and American Philatelic Societies being now included.

I must close with an expression of regret that the Prize Competition announced in the last Annual failed to lure any of our readers into the throes of literary composition.

PERCY C. BISHOP,  
EDITOR.

*Offices of the “Stamp Collector's Annual,”*  
7 Southampton Row, London, W.C.

# NEW ALBUM FOR BRITISH STAMPS.



We have now ready for delivery our new **printed Album for the STAMPS OF GREAT BRITAIN**, suitable for the Moderate Specialist in the Stamps of **our own Country**. It contains spaces for all **plate numbers, varieties of shade, and varieties of cancellation**. It includes **Revenue Stamps and postally, Government Telegraphs, Cut Squares used as adhesive, and British Stamps used abroad**.

It consists of 84 leaves, **PRINTED ONE SIDE ONLY**, on thick plate paper, and is illustrated with **155 first-class illustrations**; size of leaf, 11 in. X 8½ in.

*The Album is suitable either for a collection consisting entirely of used Stamps, or a collection of unused, plus varieties of cancellation, etc.*

## PRICES, including Cardboard Case.

		<i>Post free.</i>
Strongly bound in full cloth, gilt lettered, well guarded ...	6/-	6/6
As last, but half bound in leather, do. ...	8/-	8/6
Bound in full leather, bevelled boards, gilt edges do. ...	10/-	10/6

## SPECIAL GIFTS FOR "ANNUAL" READERS.

To every applicant we will present **GRATIS a Packet of 100 different stamps, or 4 beautiful unused Zanzibars catalogued at 1/1**. *Id. stamp must be enclosed for reply.* (In either case mention Packet No. 40).

Every purchaser of **not less than 2/- worth** of stamps from our Approval Sheets will receive **GRATIS 10 unused British Colonial Stamps**.

Every purchaser of **not less than 5/- worth** of stamps from our Approval Sheets will receive **GRATIS a British Colonial Stamp catalogued by Gibbons at 2/6**.

Every purchaser of **not less than 30/- worth** of stamps from our Approval Sheets will receive **GRATIS a Stamp catalogued by Stanley Gibbons at 40/-, or a copy of the British Album advertised above**.

**GOOD DISCOUNT FROM SHEETS. NO RUBBISH.**

We purchase Collector's Duplicates at Half our Catalogue Prices. Write for full particulars.

"Philatelic Advertiser and Stamp Market Journal," post free, 6d. per annum.

48 pp. List of Sets, Packets, Albums, Accessories, etc., post free on application.

Wholesale List, for **DEALERS ONLY**, post free.

## BRIGHT & SON, 164 Strand, W.C.



## CONTENTS

---

	PAGE
The Philatelic Exhibitions of the Year (Illustrated), ... ..	9
The Board of Trade Officials. By I. J. Bernstein, ... ..	20
The New Issues of 1906: A Simplified List (Illustrated), ... ..	24
The College Stamps of Oxford and Cambridge (Illustrated). By L. Savournin, ... ..	45
The "Cut Out" Postage Stamps of Great Britain: A Reference List and Guide to Values. By Charles Nissen, ... ..	68
The Philatelic Literary Index for 1906. Compiled by Percy C. Bishop, ... ..	72
Philatelic Societies and Exchange Clubs: A Directory and Guide, ... ..	89

P. L. PEMBERTON & CO.,  
84 HIGH HOLBORN,  
LONDON, W.C.

WE make a speciality of our Stock-Approval Books of different countries, which are invaluable alike to the general collector and to the specialist. They contain almost complete selections carefully and scientifically arranged, including unused and used, in most cases several of each. The Stamps are priced from 25 per cent. to 50 per cent. below catalogue for fine copies, and much less for inferior ones. If you have a pet country it will pay you to write for our book.



*The Philatelic Journal of Great Britain*

A POPULAR MONTHLY MAGAZINE.

ANNUAL SUBSCRIPTION, 2/6 POST FREE.

If you are not already a Subscriber, write for a Specimen Copy.  
FREE. New Volume begins January 25th.

P. L. PEMBERTON & CO.,  
84 HIGH HOLBORN, W.C.

## INDEX TO ADVERTISERS.

	PAGE
Beck, H. W., ... ..	111
Bean, H., ... ..	104
Bernstein, I. J., ... ..	104
Bridger & Kay, ... ..	110
Bright & Son, ... ..	4
Bluett, E., ... ..	105
"Captain," The ... ..	2
Emerson, ... ..	105
Ginn, F. R.,... ..	112
Glendining & Co., ... ..	111
Jacoby, W., ... ..	105
Jones, John W., ... ..	109
Kohl, P., ... ..	104
Loverius, George, ... ..	104
May, L., & Co., ... ..	108
Nissen, Charles, & Co., ... ..	Cover II.
Ostara, D., ... ..	106
Peckitt, W. H., ... ..	8
Pemberton, P. L., & Co., ... ..	6
Plumridge & Co., ... ..	Cover III.
Puttick & Simpson, ... ..	102
"Stamp Collector's Fortnightly," ... ..	107
Stanley Gibbons, Limited, ... ..	Cover IV.
Whitfield King & Co., ... ..	103
William Stamp Company, ... ..	105
Yaremdji, A., ... ..	106

# Rare Single Stamps and Collections .

**Bought  
for  
Cash.**

A LARGE SELECTION OF STAMPS ALWAYS  
ON VIEW, RANGING FROM THE GREATEST  
RARITIES TO THE MOST RECENT NEW  
ISSUES. : : : : : : : : : : :



## **Collections and Stock Books** —————

OF SEPARATE COUNTRIES,  
SENT ON APPROVAL.

## **Price List of Sets, Packets, &c.,**

. . . . . POST FREE. . . . .

---

---

**W. H. PECKITT,**  
**47 STRAND,**  
**LONDON, W.C.**

Telegrams—"PECKITT, LONDON."

Telephone—3204 GERRARD.

## The Philatelic Exhibitions of the Year.

LONDON—MILAN—DURBAN.



THE year 1906 will long remain a notable one in the annals of stamp collecting, by reason of its Philatelic Exhibitions at home and abroad.

### The London Exhibition.

The International Philatelic Exhibition, London, held at the Royal Horticultural Hall, Westminster, from May 23 to June 1, proved, both philatelically and financially, a great success. To recapitulate all the distinguished names associated with the Exhibition is unnecessary. Not only H.R.H. the Prince of Wales, but also the present Postmaster-General, and all the past P.M.-G.'s still living, allowed the use of their names



H.R.H. THE PRINCE OF WALES'S SPECIMENS OF THE 1d. AND 2d.  
"POST OFFICE" MAURITIUS.

as Patrons; the Earl of Crawford acted as Chairman of the Executive Committee, and performed the opening ceremony; while Mr. Herbert R. Oldfield and L. L. R. Hausburg as Secretaries, and Mr. Franz Reichenheim as Treasurer of the

Exhibition, worked strenuously for the success of the undertaking.

The International Committee of Judges, appointed to adjudicate upon the Exhibits, comprised ten of the most illustrious of living philatelists. Representing Great Britain were—Messrs. E. D. Bacon, W. Dorning Beckton, M. P. Castle, Major E. B. Evans, and Lieut. F. H. Napier; Dr. Emilio Diena appeared for Italy; Lieut.-Col. P. Kloss represented Germany; Mr. J. N. Luff was the American delegate; Baron A. de Reuterskiöld appeared for the philatelists of Switzerland; and Mons. Pierre Mahé represented France. Unfortunately, however, the last named was prevented, by illness, from putting in an appearance.

One of the first visitors to the Exhibition was H.R.H. the Prince of Wales, who remained nearly two and a half hours, and carefully inspected the majority of the exhibits, also visiting the dealers' stalls. That the Prince's enthusiasm for philately is no passing fad, but a very real and deep love of the hobby, was evident to all who were present at the time he visited the Show. His Royal Highness's well-known *penchant* for British stamps was evidenced by his long stay at Messrs. Charles Nissen & Co.'s stall, evincing the greatest interest in everything submitted for his inspection.

#### THE PRINCIPAL EXHIBITS.

A feature of the Exhibition, which marked a new departure in the conduct of stamp exhibitions in this country, was the institution of a Championship Class, open only to those philatelists who had already secured prime honours at previous displays. The exhibits under this head were, of course, among the very finest on view. The two Championship Cups—dual blue ribands of philately, if one may so term them—were awarded to the Earl of Crawford for his splendid display of British, and to Mr. H. J. Crocker for his world-famous collection of Hawaii. Gold medals went to Mr. L. L. R. Hausburg (Victoria), Mr. H. R. Oldfield (Bolivia), and Baron Anthony de Worms (Ceylon).

#### ROYAL EXHIBITORS.

Both the Prince of Wales and his eldest son, Prince Edward, were among the exhibitors. The Prince's rare stamps of Mauritius naturally attracted much attention, as well as His Royal Highness's display of English proofs, essays, colour trials, etc. We are able, in this year's "Annual" (thanks to

the courtesy of Messrs. Stanley Gibbons, Limited), to illustrate a page of His Royal Highness's Mauritius Stamps, and various other rare exhibits, including some of Mr. H. J. Crocker's Hawaiians.

## THE LIST OF AWARDS.

## CHAMPIONSHIP CLASS.

*Section 1.*

Cup	The Earl of Crawford, K.T. (Great Britain).
Gold Medal	L. L. R. Hausburg (Victoria).
Extra Gold Medal	Baron A. de Worms (Ceylon).

*Section 2.*

Cup	Henry J. Crocker (Hawaii).
Gold Medal	H. R. Oldfield (Bolivia).

## CLASS I.—Great Britain only.

*Section 1 (Unused only).*

Gold Medal	J. S. Higgins.
Silver „	Sydney Loder.
Bronze „	H.R.II. The Prince of Wales.

*Section 2 (Used only).*

Silver Medal	T. H. Hinton.
Bronze „	H. J. Bignold.
<i>Section 3 (Telegraph, Railway Letter Fee, or College Stamps).</i>	
Silver Medal	Rev. Hayman Cummings.
Bronze „	W. Matthews.

## CLASS II.

*Section 1.*

Gold Medal	Harvey Clarke (New South Wales).
Silver „	Lieut. F. H. Hancock (Afghanistan).
Bronze „	H.R.H. The Prince of Wales (Mauritius).

*Section 2.*

Gold Medal	L. L. R. Hausburg (New Zealand).
Extra Gold Medal	R. B. Yardley (Transvaal).
Silver „	Martin Schroeder (Germany and States).

## CLASS III.

*Section 1.*

Gold Medal	W. Moser (Japan).
Extra Gold Medal	L. L. R. Hausburg (India).
Silver Medals	B. de L'Argentière (France), Franz Reichenheim (France).
Extra Silver Medal	A. Bagshawe (Straits Settlements).

*Section 2.*

Gold Medal	C. L. Pack (Canada).
Silver Medals	P. Kohl (Mexico), R. Frehtzel (Mexico).
Extra Bronze Medals	Henry Grey (Queensland), T. Wickham Jones (Sicily).

## CLASS IV.

*Section 1.*

Gold Medal	T. W. Hall (Uruguay).
Silver „	C. J. Daun (Orange River Colony).
Bronze „	M. Jonas (Greece).

*Section 2.*

Gold Medal	A. S. Tomson (Barbados).
Silver „	Adolf Passer (Austria).
Bronze „	Lieut.-Col. F. H. Hancock (Cashmere).

*Section 3.*

Gold Medal	Dr. A. Levin (Wurtemberg).
Silver „	R. B. Yardley.
Bronze „	F. N. Schiller (Brazil).

## CLASS V.

*Section 1.*

Gold Medal	Ernst Vicenz (Hamburg).
Silver „	T. W. Hall (Zanzibar).
Extra Silver Medal	Martin Schroeder (Bergedorf and Brunswick).
Bronze Medals	The Hon. E. R. Ackerman (Norway).
	C. J. Daun (Oil Rivers and Niger Coast).
Extra Bronze Medal	P. Kleeberg (China).

*Section 2.*

Gold Medal	C. Stewart Wilson (Holland).
Silver „	H. R. H. The Prince of Wales (Hong Kong).
Extra Silver Medal	J. C. North (Cyprus).
Bronze Medals	J. Elster (Denmark and Colonies), Baron R. Lehmann (Holland).

*Section 3.*

Gold Medal	Thos. Buck (Tonga).
Silver „	J. H. Abbott (Servia).
Extra Silver Medal	Adolf Passer (Hungary).
Bronze Medals	Vernon Roberts (St. Lucia), H. R. Oldfield (Servia).

## CLASS VI.

*Section 1.*

Silver Medals	C. H. Coote and G. B. Duerst (Roumania).
Bronze „	A. Holland (Hayti), J. R. M. Albrecht (Guatemala).
Extra Bronze Medals	Hugo Griebert (Montenegro), J. H. Abbott (Hayti).

*Section 2.*

Silver Medals	T. W. Hall (Danish West Indies), H. L. Hayman (Liberia).
Extra Silver Medal	Rev. W. N. Usher (Iceland).
Bronze Medals	Mrs. D. Field (Sarawak), F. J. Melville (Sarawak).
Extra Bronze Medals	C. A. Howes (Corea), Dr. R. Stanley Taylor (Jamaica).



## CLASS VII.

For General Collections in Printed Albums.

## Section 1.

Without limit as to number.

Gold Medal

A. H. Stamford.

Silver „

Mrs. H. L. Hayman.

Bronze „

Major Baron Brov. S. von Otter.

## Section 2.

Containing from 5,000 to 10,000 Stamps.

Silver Medal

Miss A. J. Lindner.

Bronze „

H. Mecklenburg.

## Section 3.

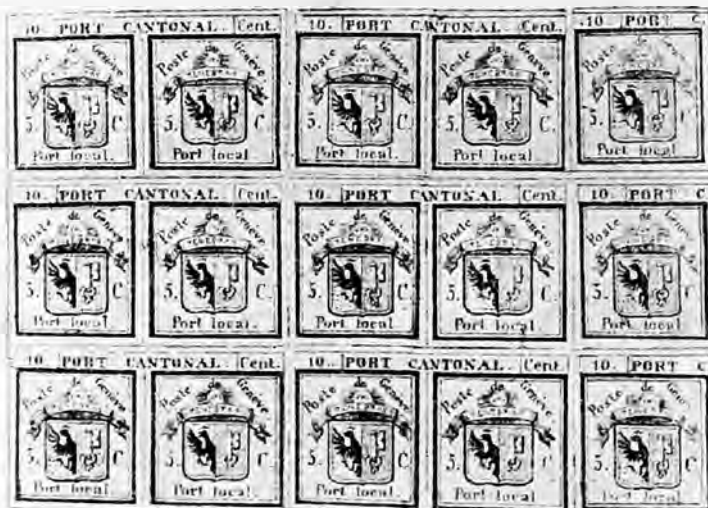
Containing not more than 5,000 Stamps.

Bronze Medal

Owen Fearnley.

„ „

T. H. Hinton.



AN EXHIBIT OF SWISS CANTONALS BY SIR WM. B. AVERY, BART.

## CLASS VIII.

For General Collections in Plain Albums.

## Section 1.

Without limit as to number.

Gold Medal

Martin Schroeder.

Silver „

J. E. Heginbottom.

„ „

J. Cooper.

Extra Silver Medal

Mrs. Herxheimer.

Bronze Medal

C. J. Tyas.

„ „

Mdlle. M. Berenback.

*Section 2.*

Bronze Medal           Containing from 5,000 to 10,000 Stamps.  
Wm. Cowland.

*Section 3.*

Containing not more than 5,000 Stamps.  
Gold Medal           D. M. de Heer.  
Silver   "           R. M. Mann.  
Bronze   "           Nelson Zambra.

## CLASS IX.

*Section 1.*

For Collectors aged from 16 to 21 years.

*Division I.*—Collections containing over 5,000 Stamps.  
Silver Medal           Carl and Alfred Lugner.

*Division II.*—Collections containing from 3,000 to 5,000 Stamps.  
Silver Medal           J. S. Higgins, Jun.  
Bronze   "           Miss C. Bonham-Carter.  
"       "           C. H. Moriarty Thompson.

*Division III.*—Collections containing not more than 3,000 Stamps.  
Extra Silver Medal   L. W. Crouch.  
Bronze Medal       Miss E. Oldfield.  
"       "           Leonard Quinton.

*Section II.*—For Collectors under 16 years of age.

*Division I.*—Collections containing over 2,000 Stamps.  
Bronze Medal           Miss Alice Degols.

*Division II.*—Containing under 2,000 Stamps.  
Bronze Medal           Master H. C. Bevan.

## CLASS X.

Gold Medal           Perkins, Bacon & Co., Ltd.

## CLASS XI.

Silver Medal           S. Loder.

"       "           A. Coyette.

Bronze Medal       C. Stuart Dudley.

"       "           Consul C. George.

"       "       Special Medals offered by H.R.H. the Prince of Wales, for the  
best Exhibits of Postage Stamps shown by Lady Collectors.

Gold Medal           Mrs. E. B. S. Benest (Specialised Collection of  
the Stamps of Brazil).

Silver Medal       Mrs. Herxheimer (for a Collection of used Stamps  
issued since 1890).

**The Milan Exhibition.**

The International Philatelic Exhibition held at Milan, from the 16th to the 23rd of September, was a triumph for Italian Philately in general, and the officers and members of the Philatelic Society of Lombardy in particular. The Hon. Secretary, Capt. Frecchi, earned the gratitude of all by his devoted work as one of the chief "organisers of victory."

The jury, truly international, was composed of the following members:—Mr. M. P. Castle, London; Dr. Achillito Chiesa, Milan; Sig. P. Cometta, Milan; Dr. E. Diena, Rome; Mons. Maurice Janglois, Paris; Mr. William Moser, Dresden; and Baron A. de Reuterskiöld, Ouchy.

#### THE LIST OF AWARDS.

**THE KING'S GOLD MEDAL.**—The King of Italy's gold medal, "Grand Prix de l'Exposition," was awarded to the Cavaliere Augusto Cave Bondi for his superb general collection of the Italian States, Italy, Italian Colonies and Foreign Offices, and San Marino. This collection was unquestionably the *pièce de résistance* of the Exhibition.

**THE MINISTER'S GOLD MEDAL.**—The other special gold medal, that given by the Italian Minister of Posts and Telegraphs, was won by M. Ernst Vicenz for his specialised collection of the postage stamps and "entires" of Hamburg.

#### CLASS I.

*Division A*—General Collections of Italy, Italian States, etc.  
Gold Medal: M. Icilio A. Loti.

*Division B*—Italian Rarities.  
Gold Medal: Prince D. Alphonse Doria Pamphili.

*Division C*—Special Collection of any one Italian State.  
Silver Medal: Comm. Francesco Gneccchi. (A beautiful display of Tuscan stamps, including the 3 lire unused, and many fine stamps on the original envelope.)

*Division D*—Collections of Fiscals.  
Silver Medal: M. Ettore Focacci.  
Bronze Medal: M. Lorenzo Finati.

#### CLASS II.

*Division A*—General Collections.  
Silver-gilt Medal: M. Georg von Hessling.

Silver Medal: Dr. R. Ferrario.

Bronze Medals: M. Fred Mongeri and M. Gustavo di Luggo.

*Division Aa*—General Collections confined to Stamps issued since 1890.  
Silver-gilt Medal: Frau Sanitätsrat Herxheimer.

*Division B*—Beginners' General Collections.  
Silver Medal: MM. C. & A. Lugner.

(NOTE.—Two exhibits entered in this Division by Mr. L. W. Crouch and M. Kurt Kohl, Junior, being specialised collections, were transferred by the Jury to Division Aa of Class III.)

#### CLASS III.

*Division A*—Special Collection of One Country (other than Italy).

Gold Medals: Mr. T. Buck (Turkey), Mrs. Field (Great Britain and Colonies), Baron R. Lehmann (Holland and Colonies), and Mr. S. Loder (Great Britain).

Silver-gilt Medals: M. M. Z. Booleman (Transvaal); M. C. E. Hoffmann (Swiss Fiscals); M. Maroldt Thill (Luxemburg); and Mr. Stewart Wilson (Luxemburg).

Silver Medals: M. I. Blanco (Spain and Colonies); and M. J. Rousette (France and Colonies).

Bronze Medal: M. C. Walch (Fiscals of Alsace-Lorraine).

*Die I.*



*Die II*



*Die V*



*Die I.*



*Die II*



HAWAIIAN RARITIES SHOWN AT THE INTERNATIONAL EXHIBITION,  
LONDON, 1906, BY MR. H. J. CROCKER.

*Division Aa*—Beginners' Special Collections of a Single Country.  
 Silver Medal : M. Kurt Kohl, Junior (Roumania).  
 Bronze Medal : Mr. L. W. Crouch (United States of America).

*Division B*—Special Collection of Obliterations.  
 Gold Medal : M. Ferréol Welter (Alsace-Lorraine).

*Division C*—Special Collection of Varieties, Errors, and Curiosities.  
 Bronze Medal : Mons. Leon de Raay.

## CLASS IV.

*Division A*—Rarities (shown by Collectors).  
 Silver Medal : M. J. Rousette.  
 Bronze Medal : M. D. M. de Heer.

*Division B*—Rarities (shown by Dealers).  
 Silver Medals : Messrs. Gilbert and Kohler (Fiscals); and Herr P. Kosack (Postage Stamps).

## CLASS V.

*Division A*—Philatelic Works.  
 Silver Medal : "Sveriges Filatelic Förening."  
 Silver Medal : Herr P. Ort.  
 Bronze Medal : Junior Philatelic Society.

*Division B*—Catalogues.  
 Silver Medal : Herr P. Kohl.  
 Bronze Medal : Senor Galvez Jimenez.

*Division C*—Journals.  
 Bronze Medals : "Berliner Briefmarken Zeitung," "Madrid Filatelico,"  
 "Nederlandsche Philatelist," and "West End Philatelist."

*Division D*—Printed Albums.  
 Bronze Medals : Mr. F. F. Arnd, Herr C. F. Luecke, and Messrs. Yvert & Tellier.

## CLASS VII.

*Division A*—Blank Albums.  
 Silver Medal : Herr P. Kohl.  
 Bronze Medal : Mr. D. Field.

## CLASS IX.—Displays by Dealers.

Silver Medal : Mr. M. Z. Booleman.  
 Bronze Medals : Messrs. A. Bolaffi, E. Constantino & Co., U. Fagioli,  
 R. Mezzardri, and E. J. Ravel.

## THE SPECIAL MEDALS

offered by particular persons, firms, and societies were distributed as follows:—

## GOLD MEDALS.

Offered by Messrs. Stanley Gibbons, Ltd., to Mr. T. Buck.  
 ,, Dr. Chiesa, to Mrs. Field.  
 ,, Mr. D. Field, to Mr. S. Loder.  
 ,, Messrs. Gelli & Tani, to Mr. Loli.  
 ,, Herr P. Kohl, to Prince Doria Pamphili.  
 ,, M. Th. Lemaire, to Baron R. Lehmann.  
 ,, Postwertzeichen-Handler Verein, to M. Ferréol Welter.

## SILVER GILT MEDALS.

- Offered by Herr P. Kohl, to Herr G. von Hessling.  
 „ Mr. D. Field, to Madame Herxheimer.  
 „ Messrs. Stanley Gibbons, Ltd., to M. M. Z. Booleman.  
 „ the “Union des Timbrophiles” (Luxemburg), to M. Maroldt  
 Thill.  
 „ Messrs. Stanley Gibbons, Ltd., to Mr. C. Stewart-Wilson.  
 „ Messrs. Tchakidjii & Yaremджи, to Mr. C. E. Hoffmann.

## SILVER MEDALS.

- Offered by Mr. D. Field, to Senor I. Blanco.  
 „ “Société Française de Timbrologie,” to M. J. Roussette.  
 „ Mr. M. L. Booleman, to Comm. F. Gœcchi.  
 „ Messrs. Stanley Gibbons, Ltd., to Mr. E. Focacci.  
 „ Mr. E. Trom, to Dr. R. Ferrario.  
 „ Herr P. Kohl, to Messrs. C. & A. Lugner.  
 „ Mr. A. Beddig, to Mr. Kurt Kohl.  
 „ Messrs. Stanley Gibbons, Ltd., to Mr. J. Roussette.  
 „ M. Rivolta, to the Société Philatelique de Suède.  
 „ „ to Herr P. Ohrt.  
 „ „ to Herr P. Kohl.

## BRONZE MEDALS.

- Offered by M. Montanari, to Mr. Fred. Mongeri.  
 „ „ to Mr. G. Di Luggo.  
 „ „ to Mr. Lor. Finati.  
 „ Messrs. Yaar & Co., to Mr. C. Walch.  
 „ The Junior Philatelic Society, to Mr. D. M. de Heer.  
 „ Mr. D. Field, to the Junior Philatelic Society.

**An Exhibition in Natal.**

Although not of international rank, the Philatelic Exhibition held at Durban, Natal, under the auspices of the Durban and District Philatelic Society, in August last, must not be omitted from any review of the Philatelic Exhibitions of the year.

The Governor of Natal, Sir Henry McCallum, was Patron of the Exhibition, and performed the opening ceremony on August 6th; the Chairman of the Executive Committee was Mr. T. J. Miljoen; the Secretary, Mr. W. Percy Williams; and the Judges, Messrs. H. Roberts, G. S. Jones, and J. F. Bartlett.

## THE PRINCIPAL AWARDS.

CHAMPIONSHIP CLASS (best exhibit of 50 varieties)—Gold Medal, T. J. Miljoen; Silver Medal, C. H. M'Kean.

SOUTH AFRICA (CLASS VI.)—Gold Medal, T. J. Miljoen; Silver Medal, W. Percy Williams.

EUROPE (CLASS I.)—Silver Medal, T. J. Miljoen; Bronze Medal, C. W. Jewitt.

ASIA (CLASS II. ; exhibits not exceeding three countries)—Silver Medal, T. J. Miljoen.

AFRICA (CLASS III.)—Silver Medal, W. Percy Williams.

OCEANIA (CLASS V.)—Silver Medal, C. W. Jewitt ; Bronze Medal, R. H. Corke.

GENERAL COLLECTIONS (CLASSES VII. and VIII.)—Silver Medals, C. W. Jewitt and R. H. Corke ; Bronze Medals, R. B. Grenfell and M. Saphir.

Philatelic Exhibitions of a less pretentious nature have been held at Philadelphia, U.S.A., and at Leicester and Sheffield, under the auspices of local societies. There has also been an Exhibition at Buenos Ayres, organised by the Argentine Philatelic Society.



## The Board of Trade Officials.

By I. J. BERNSTEIN.

**I**N the year 1880 the inconvenience of having to pay for the postage of official letters out of their private pockets, and then having to wait till the end of the quarter before the Government reimbursed them for the outlay, was the cause of much complaint amongst officials. It was felt to be an injustice, and various schemes were devised to supply them with stamps that, though retaining their franking power, could not be converted into cash, and that were so marked as to be only available for use on official correspondence.



Special stamps were suggested ; it was thought of using the unappropriated die for the purpose, putting the name of the department in the label at foot. It was, however, considered inadvisable from a Post Office point of view to have different stamps than those then current, and the devices employed by private firms and the Oxford Union Society, against misuse, were then resorted to. Printing on the back did not meet the requirements, and there remained but over-printing on the face



or perforating initials or designs through the stamp. This latter was a method just then coming to the front, and much encouraged by the Post Office. Consequently it was tried for the Government Department of the Board of Trade, and the first issue was made on the 27th January, 1882. As, however, the perforated device was not easy to distinguish from those used by private firms, particularly when on a letter, this method was not adapted by the other departments, excepting the Office of Works, which used it for the short period—August, 1895, till March, 1896. The Board of Trade, however, retained it till all distinctive official stamps were finally abolished on the 14th May, 1904.

Their appearance passed quite unnoticed in philatelic circles, and for many years it was little thought that the perforation of a Crown, with the initials B.T. underneath, was of an official character on a par with the overprint I.R. official, which created a mild sensation when it appeared in September, 1882.

A warrant for their preparation, such as was required for the overprinted "officials," not being necessary, no official record is available of what stamps, or how many of any stamp, were so perforated.

The official information available states only: "That they were first used on January 27th, 1882, and that all stamps from the ½d to 1/- values current between that date and May 14th, 1904 (when their use, in common with other official stamps, was discontinued), were issued to, as required, and used by the department."

As, however, the 2d. blue (line engraved), plate 15, was one of the first Board of Trade Officials, it is evident that the stamps were prepared some few months before issue, as this stamp was superseded by the 2d. Carmine Rose (De La Rue Series) in November, 1880. I propose, therefore, listing the stamps that may possibly be found Board of Trade Official, marking those with an asterisk that I have actually seen.

It is evident that two, if not more, perforating machines were employed during the 23 years these stamps were in use, as the holes in the earlier issues are considerably larger than in the later ones, which are also found without the full stop between the initials. They were, no doubt, intentionally made smaller, as the larger the hole the more tender and likely to tear became the stamp. It is probable that the machine consisted of only one device, each stamp in a row being punched

separately, but the rows were folded up either vertically or horizontally, and several thicknesses of stamps perforated simultaneously, as one can find vertical pairs with the device, tête-bêche, or horizontal pairs with one of the designs reversed. In this case the crown being symmetrical it does not show any differences, but the letters read T.Æ.

Being hand-punched, and a number of stamps punctured by one operation, the quantity of minor varieties resulting is naturally big.

Besides the principal ones, the tête-bêche and reversed varieties already mentioned, one can find stamps with either the B or the T, or with both entirely, or in part, not punctured, the T reading like an inverted L, or with a short upright or horizontal stroke. Examples are found with part of the Crown missing, and I have seen some with the crown only.

Other flaws in the design are due to the breaking of single pins, and are quite too numerous to mention.

In common with all other Government Departments, the Board of Trade correspondence to and from head quarters was franked, and the use of stamps unnecessary.

Stamps were only used by the Head Office for letters going abroad, and by branch offices for all correspondence other than that addressed to head quarters. As the Board of Trade has no branch offices, it follows that most of their stamps went to foreign countries (mostly to captains of British boats at foreign ports), and their rarity is thus easily explained. Added to this is the fact that hardly anybody was aware of their official character, and they were, no doubt, destroyed as damaged (*i.e.*, perforated) stamps.

A few may be found with the cancellation of a seaport, but most of them have the London postmark.

Since 1887, to meet the requirements of the Parcel Post Act, an occasional copy is to be found that has been used on a parcel.

Why these stamps are not catalogued I cannot understand. English specialists' catalogues find room for "Firm's names on back," "College issues," Private Telegraph Companies', and, latterly, Railway letter stamps; even our Standard Catalogue includes Private and Army Telegraphs; mostly stamps issued only by *permission of the Government*, but all agree in ignoring these although *actually issued* by the Government.

## LIST OF STAMPS POSSIBLY USED AS BOARD OF TRADE OFFICIALS.

\* Denotes known to have been so used.

\*2d. blue, pl 15, Line engraved Series.

2½d., pl. 20, Surfaced printed.

\* 21.

22.

23.

3d., pl. 20, spray.

20, crown.

21, "

21, lilac and carmine.

4d., pl. 17, mouse brown, wmk. garter.

17, " " crown.

18, " " "

6d., pl. 17, grey, spray.

17, " crown.

18, " "

18, lilac and carmine.

1/-, pl. 13, orange, spray.

\* 13, " crown.

14, " "

De La Rue Series.

½d. green.

1d. venetian red.

\*1½d. venetian red.

2d. carmine rose.

1884 Issue. Unified Series.

\*½d. blue-black.

\*1½d. lilac.

\*2d. lilac.

\*2½d. "

3d. "

4d. green.

5d. "

6d. "

9d. "

\*1/- "

Jubilee Issue.

\*½d. vermilion.

1d. lilac, 14 dots.

\*1d. " 16 "

\*1½d.

\*2d.

\*2½d.

\*3d.

\*4d.

\*4½d.

\*5d.

\*6d.

\*9d.

\*10d.

\*1/-.

\*½d. blue-green.

\*1/- red and green.

King Edward Series.

\*½d.

\*1d.

\*1½d.

\*2d.

\*2½d.

\*3d.

\*4d.

\*5d.

\*6d.

\*9d.

\*10d.

\*1/-.

## The New Issues of the Year.

### A SIMPLIFIED LIST.

COMPILED BY CHARLES NISSEN.

It should be borne in mind that the following compilation is put forward merely as a list of new standard varieties of Postage Stamps issued during 1906, and that it is in no sense a complete guide to all new varieties (using the word in its strictly philatelic sense) issued during that period. The list, it is hoped, will be helpful, especially to the general collector, as a means of checking his acquisitions since the beginning of 1906, and ensuring that all new emissions have been duly added to his store. To a busy philatelist nothing is more easy than to delay the purchase of a new set from day to day until, perhaps, the matter is completely forgotten; and in many cases nothing is more difficult than to procure complete unused sets of recent issues, especially some of the ephemeral emission of second-rate foreign countries.—*Ed., Stamp Collectors' Annual.*

## BRITISH EMPIRE.

### Bahamas.

Design as 1903 issue.

Wmk., perf.

½d yellow green.

### Barbados.

Wmk., perf.

The Nelson Centenary Commemorative Issue.

¼d grey and black.

½d green "

1d scarlet "

2d yellow "

2½d ultramarine and black.

6d lilac "

1/- rose "

Ter-centenary Commemorative Issue.

1d black, blue, and green.

### Bermuda.

1902 design.

Wmk., perf.

2d orange and grey.

2½d blue and brown.

4d orange-brown and blue.

**British Bechuanaland.**

Stamp of Great Britain over-printed in black in two vertical lines.  
 $\frac{3}{4}$ d dark green.

**British Levant.**

Stamps of Great Britain over-printed.

1 piastre on  $2\frac{1}{2}$ d ultramarine.

2 piastres on 5d par and blue.

On 1905 Issue.

1 piastre on 2d green and scarlet.

**Brunei.**

Labuan Stamps of 1902 Issue over-printed, and the original value crossed out.

1c black and violet.

2c on 3c black and brown.

2c on 8c black and vermilion.

3c black and brown.

4c on 12c yellow and black.

5c on 16c green and brown.

8c black and vermilion.

10c on 16c green and brown.

25c on 16c " "

30c on 16c " "

50c on 16c " "

1 dollar on 8c black and vermilion.

**Canada.**

Postage Due. No wmk., perf.

1c violet.

2c violet.

5c violet.

**Cyprus.**

Design as 1903 Issue. Wmk. Crown, C.A., perf.

10 paras yellow and green.

**Fiji.**

1903 design.

1d carmine.

**Gambia.**

1905 Issue. Over-printed.

$2\frac{1}{2}$ d. on  $\frac{2}{6}$  purple and brown on yellow.

1d on  $\frac{3}{6}$  carmine and green.

**Gibraltar.**

As 1903 Issue. Paper white.

1d. carmine.

$2\frac{1}{2}$ d ultramarine.

**Gold Coast.**

Design as 1902 Issue. Wmk., perf.

$\frac{2}{6}$  green and yellow.

**India.**

Inscription, "Indian Postage and Revenue."  
 $\frac{1}{2}$ d pea green.

**Indian Native States.***Jaipur.*

Current Design.  
 $\frac{1}{4}$ a olive yellow.

*Nepaul.*

Current Design.  
 4a deep green.

*Puttialia.*

Stamps of India, 1902, over-printed Patiala State.  
 8a magenta.  
 12a purple on red.  
 1r green and carmine.

*Travancore.*

Current type over-printed.  
 $\frac{1}{2}$  on  $\frac{1}{2}$ ch mauve.  
 $\frac{1}{2}$  on  $\frac{1}{2}$ ch purple.

**Jamalca.**

Printed in single colour in revised type, with the words "Postage and Revenue" at each side.

$\frac{1}{2}$ d green.  
 1d carmine.

**Malay States.**

1901 Design. Wmk. Crown, C.A., perf.  
 1c green.  
 3c brown.

**Maldives.**

Stamps of Ceylon, 1903 Issue. Over-printed Maldives.  
 2c orange brown.  
 3c green.  
 4c orange and ultramarine.  
 5c lilac.  
 15c blue.  
 25c pale brown.

**Straits Settlements.**

Design same as 1902. Wmk., perf.  
 8c blue.  
 25 dol grey-green and black.

**Trinidad.**

1896 Design. Wmk., perf.  
 2 $\frac{1}{2}$ d. blue.

**Western Australia.**

Swan Design.  
 6d violet.

## FOREIGN COUNTRIES.

### Abyssinia.

The stamps of 1905 issue overprinted in French currency, with Amharic inscription in violet.

05 on	$\frac{1}{4}$	garish green.
10 on	$\frac{1}{2}$	„ rose.
20 on	1	„ blue.
40 on	2	„ brown.
80 on	4	„ brown lilac.
1.60 on	8	„ violet.
3.20 on	16	„ black.
5 on	$\frac{1}{4}$	„ green.

### Azores.

In future Angra, Horta and Ponta Delgada are to be united for postal purposes, and there will only be one series of stamps instead of three, as at present. The design adopted is that of 1898, with "AÇORES" at foot. In the top left corner are the numerals of value, in the upper right corner is "A" for Angra; while "H" (for Horta) and "PD" (for Ponta Delgada) appear in the left and right lower corners respectively.

2½r	grey and red.
5r	orange and black.
10r	yellow-green and red.
20r	violet and red.
25r	rose and black.
50r	ultramarine and black.
75r	bistre and red.
100r	blue and black on pale blue.
200r	violet and black on pale rose.
300r	blue and black on rose.
500r	black and red on azure.

### Austria.

1902 design, but the numerals printed in the same colour, instead of black.

5	heller yellowish green.
10	„ rose.
20	„ brown.
25	„ ultramarine.
30	„ mauve.

### Belgium.

Parcel Post, 1861 design, 1.10 fr black and rose.

### Bonadir.

Italian Somaliland of 1903 issue overprinted.

15c on 2a	brown orange.
13c on 5a	yellow orange.
40c on 10a	lilac.

**Bosnia.**

A new design, values from 1 to 50 heller, are large and oblong in size, and the three high values are extra large square stamps, the pictures as described. Perf. and imperf.

- 1 (h) black (View of Dohoi).
- 2 ,, violet (View of Mostar near the Bridges).
- 3 ,, olive-yellow (Plima Tower at Jaice).
- 5 ,, dark green (Pass of Narcuta, with View of the Prenj).
- 6 ,, orange-brown (Ramatal).
- 10 ,, carmine (Road in the Valley of Urba).
- 20 ,, dark brown (Old Bridge at Mostar).
- 25 ,, deep blue (View of Sersaievo).
- 30 ,, green (Post by Beast of Burden).
- 35 ,, blue-black (Tourists' Pavilion at Jezero).
- 40 ,, orange (Mail Wagon with Horses).
- 45 ,, orange-red (Market at Sersaievo).
- 50 ,, purple (Postal Motor-car).
- 1 k lake-red (The Carsija at Sersaievo).
- 2 k bronze-green (The Lucas Tower at Jaice).
- 5 k grey-blue (Portrait of the Emperor of Austria).

**Brazil.**

A new Portrait Design, printed by the American Bank Note Co., New York; each stamp with a different portrait. The 700r has the portrait of the present President of the Republic, while the head of the 50 reis value is that of the discoverer of Brazil. The other personages are either ex-Presidents or well-known Brazilian politicians.

- 10 reis slate-blue (Aristides Lobo).
- 20 ,, violet (Benjamin Constant).
- 50 ,, green (Alvares Cabral).
- 100 ,, rose (Wandenkolk).
- 200 ,, blue (Deodora da Fonseca).
- 300 ,, grey (Floriano Peixoto).
- 400 ,, olive (Prudente).
- 700 ,, red-brown (Rodrigues Alves).

*Official Stamps.*

Portrait of Alfonso Penna, bi-coloured, the frame being in orange and the centre in light green.

- 10 reis, orange and green.
- 300 ,, ,, ,, ,,

*Postage Due Stamps.*

The design consists of a large numeral of value, with the inscription "Toxa-Devida."

- 10 reis.
- 50 ,, green.
- 100 ,, rose.
- 200 ,, blue.
- 300 ,, grey.
- 400 ,, olive.
- 700 ,, red-brown.



**Curacao.**

With Head of Queen Wilhelmina.

1 guilder red-brown.  
2½ „ slate-blue.

**Dominican Republic.**

Same designs as the 1901 issue, but with their centres in black. Perf.

½c green and black.  
1c carmine „  
2c red brown „  
5c blue „  
10c lilac „  
20c olive „  
50c brown „  
1p violet „

Postage Due stamps of 1901 issue overprinted. Perf.

1c on 4c sepia (in red).  
1c on 10c „ (in black).  
2c on 5c „ „

**Dutch Indies.**

15c brown.  
1 guilder lilac.  
2½ „ slate.

**Egypt.**

Similar design as 5 millièmes of 1902 issue, but with plain white spaces over the head of the Sphinx. Wmk. and perf.

4 mills deep carmine.

**Eritrea.**

Italian stamp of 1903 overprinted Colonia Eritrea in black.

15c on 20c orange.

**Ecuador.**

Fiscal stamps of 1898 issue, with a similar overprint as in 1901-2 type, bearing the word "Tres" in the centre, and "Centavos" below it, vertically in black. Perf.

1c on 5c grey lilac.  
1c on 20c grey.  
1c on 1s blue.  
3c on 1s „

**France.**

SOWER DESIGN—similar to the 1903 issue. Perf.

10c vermilion.

35c violet.

OLIVIER MERSON DESIGN. Perf.

45c green and blue.

POSTAGE DUE, 1881 DESIGN.

20c moss-green.

FRENCH P.O. in China. Stamps of Indo-China, 1904 issue, over-printed China, and in Chinese characters.

20 cent red on green.

25 „ blue.

1 franc olive-green.

2 „ brown on yellow.

10 „ red on green.

**French Colonies.**

The regular type of present issue of various Colonies, with a new value, 35c in red, also a new Postage Due stamp, 20c imperf.

A NEW DESIGN SERIES—

A new set which consists of three different designs (as illustrated) issued for general use for various Colonies, with name inserted in colour given.

**A NEW POSTAGE DUE SET**

has also been issued, all the values of this being of one design. In the upper portion is a small view of a sea-coast town in front. Curved above this is a scroll on which "AFRIQUE OCCIDENTALE FRANÇAISE" appears. In the centre is a tablet containing the value, with "POSTES—CHIFFRE-TAXE."



above the numerals, and "A PERCEVOIR" below. On each side of this is the portrait of a native, and at the base is the name of the Colony, with the letters "R" and "F" on either side.

## THE NEW DESIGN SERIES—

1c to 15c type, 20c to 75c type, 1fr to 5fr type.

1c grey and red.

2c chocolate and red.

4c " " on azure.

5c green and red.

10c rose and blue.

15c mauve and red.

20c black and red on pale blue.

25c blue and red on salmon.

30c chocolate and red on pale buff.

35c black and red on yellow.

40c red and blue on pale azure.

50c violet and red on toned.

75c blue and red on yellow.

1fr black and red on blue-grey.

2fr blue and red on pink.

5fr red and blue on pale yellow.

Postage Due.

5c green and red on greenish.

10c red-brown and blue.

15c blue and red on bluish.

20c black and red on yellow.

30c red and blue on pale buff.

50c mauve and red.

60c black and red on buff.

1fr " " on toned.

## ANJOUAN—

35c black and red on yellow.

## COTE D'IVOIRE—

New Design, 1c, 5c, 10c, 35c. Postage Due, 20c.

## DAHOMÉY—

New Design, 10c, 35c. Postage Due, 20c.

## FRENCH GUIANA—

35c black and red on yellow.

## FRENCH GUINEA—

New Design, 35c. Postage Due, 20c.

## GABON—

35c black and red on yellow.

## GRAND COMORO—

35c black and red on yellow.

## GUADELOUPE—

35c black and red on yellow.

20c black on yellow Postage Due.

## INDIAN SETTLEMENTS—

35c black and red on yellow.

## INDO CHINA—

35c black and red on yellow.

## IVORY COAST—

New Design, 10c, 35c. Postage Due, 20c.

## MADAGASCAR—

35c black and red on yellow.

## MARTINIQUE—

35c black and red on yellow.

## MAURITANIA—

New Design, 1c, 2c, 4c, 5c, 10c, 20c, 25c, 30c, 35c, 40c,  
50c, 75c, 1fr, 2fr, and 2fr.

## MAYOTTE—

35c black and red on yellow.

## MOHELI—

The regular type of 1892 for this island in the Comoro group. Perf.

1c black on azure,	value in carmine,	
2c brown on buff,	„	blue.
4c brown on grey,	„	blue.
5c yellow-green,	„	carmine.
10c rose-red,	„	blue.
20c red on green,	„	blue.
25c blue,	„	carmine.
30c cinnamon on drab,	„	blue.
35c black on yellow,	„	carmine.
40c red on yellow.	„	blue.
50c brown on azure,	„	carmine.
75c brown on orange,	„	„
1fr olive green on toned,	„	„
2fr violet on lilac,	„	„
5fr lilac,	„	blue.

## NEW CALEDONIA—

35c black and red on yellow, Postage Due.

## NEW DESIGN SERIES

of Postage Due stamps. The design shows a ferry boat in the centre, manned by two natives.

5c ultramarine on greenish.  
 10c brown on pale buff.  
 15c green on greenish.  
 30c carmine.  
 50c ultramarine on toned.  
 60c bronze-green on greenish.  
 1fr deep green on straw.

## OCEANIC SETTLEMENTS—

35c black and red on yellow.

## SENEGAL—

New Design, 1c, 2c, 4c, 5c, 10c, 15c, 20c, 25c, 30c, 35c,  
 40c, 50c, 75c, 1fr, 2fr, and 5fr. Postage Due, 5c,  
 10c, 15c, 20c, 30c, 50c, 60c, and 1 fr.

## UPPER SENEGAL AND NIGER—

New Design, 5c, 10c, 15c, 35c. Postage Due, 5c, 10c,  
 15c, 20c, 50c, 60c, and 1fr.

## Greece.

Olympic Games issue. Printed by Perkins, Bacon & Co. on watermark paper and perforated.



- 1 lepton brown, Apollo throwing the discus.  
 2 lepta grey, " "  
 3 " orange, Atlas. " "  
 5 " green " "  
 10 " carmine, figure of Victory, seated.  
 20 " violet, Hercules and Atlas.  
 25 " blue, Hercules' battle with Anteus.  
 30 " violet, Wrestlers.  
 40 " brown, Demon and Winged Youth.  
 50 " red-brown, Hercules and Atlas.  
 1 drachma black, ancient tile, depicting a race.  
 2 drachmae carmine " " "  
 3 " yellow " " "  
 5 " dark blue, torch-bearers and the Goddess of Victory.

**Hayti.**

The regular issue of 1904 overprinted in black.

1c on 20c orange.

2c on 50c brown-lake.

Issue of 1898 and 1900 overprinted.

“En Piastres Fortes—Service Extérieur Provisoire” in an oval in red.

1898 Issue.

1c blue.

2c orange.

3c green.

4c red.

5c brown.

7c grey.

8c rose.

10c carmine.

15c olive-grey.

20c black.

50c brown-lake.

1g reddish-purple.

1900 Issue.

1c yellow-green.

2c carmine.

5c sky-blue.

**NEW DESIGN ISSUE—**

Printed by the American Bank Note Co., on unwatermark paper. Perf. Issued for foreign postage, dated 1906. All stamps are oblong in shape, and have the values indicated in “centimes de piastre,” which are sold based on the silver dollar. The 1c and 50c have the Arms of Hayti in the centre; the 2c, 5c, and 20c show the portrait of President Nord Alexis; while the other values show views of different buildings. The stamps are engraved in *taille-douce*.

**For Foreign Use.**

1 cent.	de piastre,	green.
2	”	” red.
3	”	” brown.
4	”	” carmine.
5	”	” blue.
7	”	” grey.
8	”	” rose.
10	”	” orange.
15	”	” grey-green.
20	”	” green.
50	”	” vermilion.
1 piastre		lilac.

**For Inland Use.**

For inland use, with denominations in “centimes de gourde.” In this series the 2c and 7c show the Arms of the Republic, and the 1c and 3c are adorned with the portrait of the President.

- 1 cent. de gourde, blue.  
 2 " " yellow.  
 3 " " grey.  
 7 " " green.

Postage Due.

- In an oblong design. Perf.  
 2c vermilion.  
 5c blue.  
 10c violet.  
 50c olive.

### Holland.

1898-1901 DESIGN.

17½c mauve.

POSTAGE DUE, 1881 ISSUE overprinted in black.

6½c on 20c blue.

50c on 1g blue and red.

### Italy.

The design of the 5c, 10c, and 25c has a profile portrait of the King, with head to left. The words "POSTE ITALIANE" appear in a curved label above, "CENTESIMI" is curved underneath the oval, and at each end of this label there is a circle containing the figures that denote the value. The stamps are watermarked with a Crown and the perforation.



The 15c bears a profile portrait of the King of Italy with head to right. In a small label above the head is "POSTE ITALIANE" with "Cent" at the left and "15" at the right. The background consists of the sea, and in the right upper corner, just below the head, the Royal Crown is emblazoned on a fiery sun. The stamp is engraved in *taille-douce*, printed in black on unwatermarked paper, and perf.

- 5c green.  
 10c carmine.  
 15c grey-black.  
 25 blue.

**Italian Foreign P.O.—Crete.**

Italian stamps of 1901 (except 20c) which is of 1905, overprinted "La Canea" in sans-serif capitals.

- 1c brown.
- 2c red-brown.
- 5c green.
- 10c carmine.
- 15c on 20c orange.
- 20c orange.
- 25c ultramarine.
- 40c brown.
- 45c olive.
- 50c lilac.
- 1l green and brown.
- 5l blue and rose.
- Express Letter adhesive.
- 25c rose.

**Liberia.**

A NEW DESIGN comprising 13 values, from 1 cent to 5 dollars. All save one are bi-coloured, and have been engraved and printed from steel plates by Perkins, Bacon & Co., Ltd. Sir Harry Johnston, formerly High Commissioner for Uganda, has furnished some of the designs from illustrations in his new book "Liberia," giving life-like reproductions of birds, animals, and reptiles found in the Republic.

The perforation of the new stamps is from comb machines, gauging 14 both for the ten smaller values and for the three dollar values, which are of slightly larger size.

The 1, 2 and 5 cents, being the values most largely used, are printed in sheets of 50, the others being in sheets of 20.

We append a list of the designs and colours of both the ordinary stamps and the accompanying set with "O.S." surcharge for official use:—

- 1 cent (African Elephant) black and green, and also surcharged O.S. in red.
- 2 cents (Head of Mercury) black and carmine, and also surcharged O.S.
- 10 cents (Plantain Eater) black and maroon, and black and amethyst, surcharged O.S. in red.
- 15 cents (Agama Lizard) dark green and purple, and black and chocolate-brown, surcharged O.S. in black.
- 20 cents (Great Egret) black and orange, and black and dark green, surcharged O.S. in red.
- 25 cents (Coin of same value) grey and Chinese blue, and grey and Tyrian purple, surcharged O.S. in red.
- 30 cents (Machine Engraving and Figure of Value) violet and dark brown, surcharged O.S. in black.
- 50 cents (Liberian Flag) black and dark green, and green and terra-cotta, surcharged O.S. in green.
- 75 cents (Liberian Hippopotamus) black and chocolate-brown, and black and light blue, surcharged O.S. in black.
- 1 dollar (Head of Liberty) grey and pink, and grey and dark green, surcharged O.S. in red.
- 2 dollars (Mandingoes) black and dark green, and black and Tyrian purple, surcharged O.S. in blue.





THE NEW POSTAGE STAMPS OF LIBERIA.

5 dollars (Head of President Barclay and Executive Mansion) dark grey and maroon, and dark grey and orange, surcharged O.S. in black.

### Luxemburg.

NEW DESIGN, portrait of the reigning Grand Duke engraved, in *taille douce*. Perf.

10c carmine-red.

### Montenegro.

Stamps of 1902, overprinted, consisting of words in Russian at top and right, "Constitution" at left, and "1905" at foot, impressed in red or black, as indicated in the lists given below.

- 1 heller, blue-red overprint.
- 2 ,, mauve-black ,,
- 5 ,, green-red ,,
- 10 ,, rose-black ,,
- 25 ,, blue-red ,,
- 50 ,, grey-green red overprint.
- 1 krone, lilac-brown red ,,
- 2 ,, bistre-red ,,
- 5 ,, orange-black ,,

Returned Acknowledgment Stamp.  
25h orange and rosine, black overprint.

Postage Due Stamps.

- 5 heller, orange, black overprint.
- 10 ,, olive, red ,,
- 25 ,, mauve, black ,,
- 50 ,, emerald ,, "
- 1 krone, grey.

### Mozambique Company.

Stamps are inscribed "Companha de Moçambique" and "Posteado a receber" at the foot.

- 5r green.
- 10r lilac-grey.
- 20r red-brown.
- 30r vermilion.
- 50r brown.
- 60r purple-brown.
- 100r red-brown.
- 130r blue.
- 200r rose.
- 500r violet.

### Nicaragua.

Postage. Stamp of 1900, overprinted Vale, 10c on 3c in black vertically reading downwards.

10c on 3c, purple.

Stamps of 1905 issue, overprinted.

- 10c on 3c violet, in black.
- 15c on 1c green, ,,
- 20c on 2c rose, ,,
- 30c on 5c blue, ,,
- 50c on 6c slate, in blue.

**NEW DESIGN FOR OFFICIAL USE**—The design shows a coat of arms in the centre, with the inscription "ESCUDO DEL DEPARTAMENTO DE MANAGUA" below it, enclosed in a rectangle, lettered "U.P.U.—NICARAGUA—OFFICIAL," in three lines at top, and "CENTAVOS" on a label at foot, with numerals in each corner.

**Official Stamps.**

1c green.  
2c rose.  
5c blue.  
6c slate.

10c yellow-brown.  
20c red.  
50c black-brown.

1 peso. carmine.  
2 pesos. violet.  
5 pesos. black.

**Overprinted Stamps.**

5c on 10c mauve.  
10c in black on 3c purple.

**Norway.**

Stamp of 1872-75 overprinted in black.  
30ore on 7sk brown.

**Panama.**

Stamps of 1904 overprinted in red.  
1c on 20c violet.  
1c on 1p lake.  
2c on 50c brown.  
5c on 1p  
8c on 50c brown.

**NEW DESIGN SERIES—**

All in different designs, the  $\frac{1}{2}$ c having in the centre a flag, and the other values have the portrait named in the centre in black ( $2\frac{1}{2}$ c Arms). Perf.

$\frac{1}{2}$ c carmine, blue-green on orange (Flag).

1c deep green and black ("VASCO NUÑEZ DE BALBOA").

2c red and black (Fernandez de Cordoba).

$2\frac{1}{2}$ c pale red (Arms).

5c blue and black (Justo Arosemena).

8c purple and black (Manuel J. Hurtado).

10c violet and black (José de Obaldia).

25c brown and black (Tomas Herrem).

50c black and black (José de Fàbrega).

1 peso orange.

2 pesos black.

4 ,, dark blue.

10 ,, green.

These have for their design the Arms of the city of Manilla.

**CANAL ZONE—**

PANAMA stamps of 1904 issue overprinted in black.

1c on 20c violet.

2c on 20c ,,

2c on 1p lake.

Stamps of 1906 overprinted Canal Zone.  
2c red and black.

### Paraguay.

Same design as 1905 issue.

2c vermilion.  
5c yellow.  
10c yellow-brown.  
20 violet.  
30 light blue.

Stamps for Official Use, 1905 design.

1c orange.  
2c green.

### Persia.

Type-set Series.

Inscription "Postes Persanes" and the denomination in three lines. Roman figures of value in each upper corners, and Persian figures in each lower corners, overprinted with a lion and word "Provisoire" in black wove paper unwatermark.

Perf.

1 chahi violet.

Imperf.

1 chahi violet.

2 „ grey.

3 „ green.

6 „ red.

10 „ blue.

13 „ brown.

### Peru.

DESIGN—The Arms of the Republic in an arched rectangle, name above and value below, "correos" on each side, and numerals in the upper corners, overprinted "Provisorio," and the value in a circle in red. Perf.

10c scarlet.

50c ultramarine.

1s brown-red.

### Philippines.

The stamps are very similar in the style of their designs to the current United States stamps. In the centre is a portrait in an oval frame, and around this is "PHILIPPINE ISLANDS, UNITED STATES OF AMERICA," in the upper spandrels, and "CENTAVOS" at the foot. Numerals denoting the value are placed in both lower corners, and below the central oval is a shield, striped in its lower half, and lined in the upper portion. While an eagle forms a crest at the top. The portraits, colours, and values are as follows:—

Perf.

2c green (Rizal).

4c carmine-rose (M'Kinley).

6c purple (Magellan).

8c brown (Legaspi).

10c blue (Lawton).

12c crimson-lake (Lincoln).

16c dark violet (Sampson).

20c light brown (Washington).

26c deep sepia (Cabriedo).

30c olive-green (Franklin).

1 peso orange (Arms).

1 ,, black ,,

4 ,, dark blue ,,

10 ,, green ,,

The high value have the Coat-of-Arms of the city of Manilla in the centre, instead of a portrait.

### Roumania.

#### Jubilee Issue.

Issued to commemorate a double celebration—the 40th anniversary of the election of Charles (second son of Prince Charles Antoine of Hohenzollern-Sigmaringen), as Hereditary Prince of Roumania (March 26th, 1866), and the 25th anniversary of his proclamation as King by vote of both Chambers (March 26th, 1881).

#### First Set.

Large oblong stamps, with different views.

1b bistre and black.

3b brown ,,

5b green ,,

10b carmine ,,

15b violet ,,

25b blue ,,

40b dark brown ,,

50b yellow brown ,,

1 len red ,,

2 len orange ,,

#### Second Set.

Large Stamps, with a portrait of King Charles, 1906.

1b bistre and black.

3b brown ,,

5b green ,,

10b carmine ,,

15b violet ,,

25b blue ,,

40b dark brown ,,

50b yellow brown ,,

1 len red ,,

2 len orange ,,

Various other sets of large size were also issued for charitable purposes in 1906.

### Russia.

#### NEW DESIGNS—

The Arms are embossed in the centre, and inscriptions are shown above and below on ornamented tablets. On each side is an elaborate array of foliage, and numerals denoting the value are placed on circular tablets at each side, just below the central oval. The stamps are on vertically laid paper. *Perf.*

5 roubles Prussian blue and pale blue on green.

10 ,, red and grey on yellow.

## Offices in China.

Six more values of the current Russian stamps have been suitably overprinted for use in the consular offices in China.

4k rose-red,	overprinted in	blue-black.
14k blue and carmine	”	red.
35k lilac and green	”	red.
70k brown and orange	”	blue-black.
3½r black and grey	”	red.
7r black and yellow	”	blue-black.

**Salvador.**

Stamps of 1900-1903 overprinted in blue and black.

1c on 12c slate.

1c on 13c brown.

2c on 26c yellow-brown.

3c on 26c ”

6c on 13c red-brown.

PORTRAIT SERIES—Stamps printed on thick paper with a portrait of Pedro José Ercalon in the centre of stamp in black.

Perf.

1 centavo,	green and black.
2	” carmine ”
3	” yellow ”
5	” blue ”
10	” purple ”
12	” violet ”
13	” sepia ”
15	” brown ”
24	” rose ”
26	” brown ”
50	” yellow ”
100	” blue ”

**Slam.**

An entirely new design. In the centre is a profile portrait of King Chulalongkorn supported by two Siamese, while in the background there is a view of the Grand Mosque of Bangkok. They are large stamps measuring 23 x 28mm., engraved *taille-douce*.

Perf.

1 att,	yellow and green.
2 atts,	violet and greenish-grey.
3 atts,	green.
4 atts,	puce and red-brown.
5 atts,	carmine-rose.
8 atts,	grey-black and olive-yellow.
12 atts,	blue.
24 atts,	brown.
64 atts (1 tical),	dark blue and orange-brown.

**Surinam.**

DESIGN OF 1904.

Perf.

25c violet.

**Tunis.**

A NEW DESIGN comprising 13 values, from 1c to 5fr. The 1c to 5c are of the ordinary size; each stamp has a view of a Mosque; 10c to 25c are



ordinary size, but oblong view of native ploughing, with a European walking by his side; 35c to 75c are large, oblong size, with view of Ruins; 1fr to 5fr illustrate an ancient Galley. Perf.

Design I.—Kairouan Mosque.

1 centime black on buff.

2 centimes red-brown.

5 „ green.

Design II.—A Native learning the art of Ploughing.

10 centimes rose.

15 „ violet on pink.

20 „ brown „

25 „ blue „

Design III.—Ruins of Hadrian's Aqueduct.

35 centimes green and bistre.

40 „ brown and red-brown.

75 „ red-brown and rose.

Design IV.—A Carthaginian Galley.

1 franc brown and rose.

2 francs olive-green and brown.

5 „ light blue and mauve.

**PARCEL POST.**

DESIGN of large, upright, rectangular shape, with a view of the Mail at an Arab village: at top is the name "Tunisie," at bottom, "Colis Postaux," and the value is expressed in figures on a shield at lower right.

5 centimes green and brown-violet.

10 „ vermilion and rose.

20 „ brown and vermilion.

- 25 centimes blue and brown.  
 30 „ black on light-blue.  
 40 „ grey and rose.  
 50 „ brown-violet and violet.  
 75 „ brown and blue.  
 1 franc red-brown and red.  
 2 francs carmine and blue.  
 5 „ violet and brown-violet.



### Uruguay.

SAME DESIGN AS 1905 ISSUE, lithographed. Perf.  
 5 centesimos blue.

### Wurtemberg.

Stamps of 1875-1902, overprinted in black, with a Crown at top, and 1806-1906 at foot.

- 2pf bluish-grey.  
 3pf brown.  
 \*5pf green.

\*Also on watermark paper.

- 10pf rose.  
 25pf orange.

#### OFFICIAL STAMPS.

- 2pf bluish-grey.  
 3pf brown.  
 5pf green.  
 10pf rose.  
 20pf ultramarine.  
 25pf orange.  
 30pf black and orange.  
 40pf „ „ rose.  
 50pf marone.  
 1 mark violet.



## The College Posts and Stamps of Oxford and Cambridge.\*

By L. SAVOURNIN,

*Hon. Secretary of the Junior Philatelic Society.*

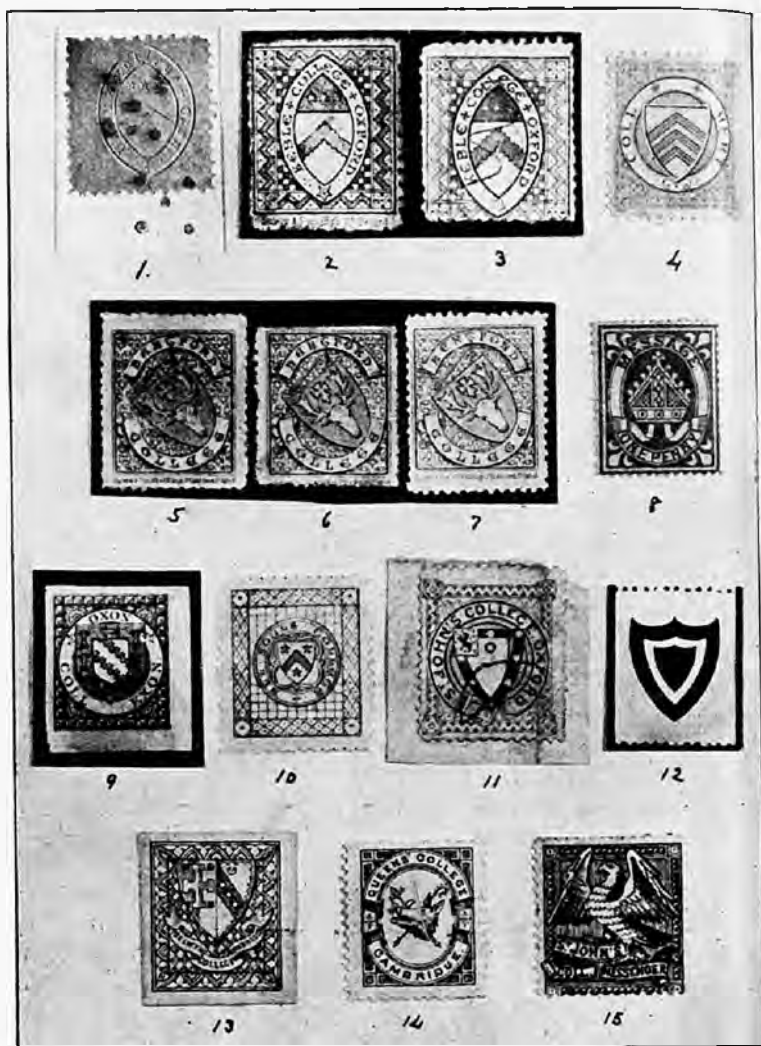
*With illustrations from Photographs by the Author.*

**T**HE two Universities of Oxford and Cambridge were founded in the twelfth century, and, from the earliest times, they followed certain customs and enjoyed peculiar privileges in dealing with their correspondence. Helped and protected by kings, prelates, and governments, and sending their graduates to fill the highest posts in the State, these two Universities have had their customs and privileges supported by rulers and respected even by modern parliaments. As early as the days of Cromwell, the Long Parliament (in 1656) enacted that the two Universities "may use their former liberties, rights, and privileges of having special carriers to carry and re-carry letters, as they formerly did, and as if this Act had not been passed." Again, in the time of Charles II. (12 Car. II., c. 35), and in the time of Queen Anne, in 1710 (9 Ann., c. 10, section 32), Parliament once more respected the ancient postal customs of Oxford and Cambridge.

Section 32 of the last mentioned Act runs as follows:—

"Provided always that this Act, or anything therein contained, shall not in any wise be prejudicial to the privileges of the two Universities of Oxford and Cambridge, or either of them, or to the Chancellors or scholars of the same, or their successors, but that they may use and enjoy such privileges as heretofore they have lawfully used and enjoyed, and that all letters and other things may be sent and conveyed to or from the said Universities in manner as heretofore hath been used; anything herein to the contrary notwithstanding."

\*The substance of this Article is a paper, illustrated with Lantern Slides, read before the Junior Philatelic Society on March 17th, 1906.



SPECIMENS OF THE COLLEGE STAMPS OF OXFORD AND CAMBRIDGE  
FROM THE COLLECTION OF THE AUTHOR, MR. L. SAVOURNIN.

Much correspondence must have passed between the several thousand members of the Universities, especially during term time, and the time-honoured method of dealing with it was as follows:—The envelope was initialled, and often dated, by the writer, and taken down to the porter's or gate-keeper's lodge. Here they were sorted, and an account kept of the writers. They were then handed to the College messenger, who delivered them in town, and, in some cases, brought back an answer with him. An account was kept of each member's correspondence, and, at the end of the week, he was charged at the rate of one half-penny or one penny per letter, most colleges charging the former rate. This system entailed book-keeping, and some colleges avoided this by making one inclusive charge per term, or for the entire time of residence at College. This system of delivery was much more rapid than that of the existing Post Office, and it is certain that the entire local correspondence of the various colleges was dealt with in this way. And not only letters, but parcels, books, clothing, tobacco, and the hundred odd articles that students required fetched from outside, were carried by these messengers, and the portorage or postage charged to their respective owners.

The management of the College posts appears to have been largely in the hands of the butlers of these institutions, officials of more importance than the name would imply. At any rate, in the early days of the Post Office, when the Government was beginning to seriously cater for the needs of the public, the importance of the College butlers was already recognised. Col. Roger Whitley, Deputy-Postmaster-General under Charles II., writing to the Postmaster at Oxford, says: "In my opinion, the College butlers may be useful to you in receiving and dispersing letters, etc., and I wish you would be in good correspondence with them; and let your letter-carriers call there for letters to be sent to London, immediately before the post goes away, as well as to bring letters to them when the post comes in." This, of course, referred only to correspondence addressed to places outside Oxford.

The envelopes that survive show that the local letters handled by the College posts were addressed to residents in other Colleges, to professors and officials residing in town, and to various firms and trades-people having dealings with the Colleges. With regard to the used

envelopes bearing stamps, adhesive or impressed, it is extraordinary how very few have survived. All are excessively rare. Probably not more than twenty of any one kind are known, and, compared to some of them, the famous Post Office Mauritius would be common rubbish. In the case of the stamps of Queens' College, although in use for nearly two years, not one single used copy was known to exist until quite recently.

The rarity of used College stamps is largely explained by the fact that, with the exception of the first issue of Keble, none of them were noticed by the Philatelic papers at the time of their use; that stamp collectors being unaware of their existence, there was no demand for them at the time; and that no serious attention was called to them until 1893, seven years after they had gone out of use and were practically forgotten. No dealers appear to have laid by a stock of them, and, as far as I know, only two firms in Oxford that had much correspondence with the Colleges were in the habit of retaining the envelopes with the rest of their correspondence. These two firms were Messrs. F. & H. Bacon, of 31 Broad Street, and Messrs T. & G. Mallam, of 126 High Street. The former were solicitors and accountants to the University, and the latter were proctors to the Vice-Chancellor's court, and it is from their correspondence that the bulk of the entires at present known have come. The first-named firm, in common with most legal firms, were in the habit, not only of preserving their envelopes, but also of endorsing them with the date of receipt, and much valuable information has been obtained from these dated envelopes respecting the actual date of use of various College stamps. I have three such dated envelopes, one of which covered a cheque of £13 11s. The other envelopes that I have are not so dated, and I regret this, especially in the case of those bearing the first issue of Keble with the official obliteration.

The very great scarcity of these early Keble issues has not yet, I think, been fully recognised. It must be remembered that each of these stamps was separately struck from the same steel die, a comparatively costly and laborious process. The number of students in the College during its first year of existence was under 40, and it was to supply the postal needs of this small number of persons, together with that of the officials of the College, that these stamps were procured.

There is not the remotest suspicion that these stamps were ever prepared "for sale to collectors." Keble College was founded with the express intention of being managed on economic lines, and it is certain that the Keble authorities, when ordering their stamps, had nothing but their own strict needs in view. And how many stamps would be required for this small community? Very few, indeed. And if few was the number printed, how fewer still must be the copies that have survived, seeing that it was not till 22 years afterwards that any serious attention was called to their existence.

As already stated, the first stamp of Keble appears to be the only one noticed by the Philatelic papers, and this stamp had been in use at least twelve months before these notices appeared. (*Stamp Collectors' Magazine*, November, 1871, and January, 1872; *The Philatelist*, December, 1871.)

I should be grateful to know of any other references to College stamps prior to 1889.

Then for a period of sixteen years, during which many College stamps were in use, and for three years afterwards, not a word appears to have been published on the matter. This long silence was at length broken by Mr. Rossiter, who published in the *Philatelic Record* of April, 1889, an account of the Cambridge stamps only. But the Oxford issues remained unnoticed until 1893, when Professor Arthur S. Napier, M.A., Ph.D., read a paper on College stamps at a meeting of the Oxford Philatelic Society, and this paper subsequently appeared, with illustrations, in the *Monthly Journal* of December, 1893.

No better person than Prof. Napier could have been found for this purpose. He was well known in the University, and was in a position to obtain information not available to the ordinary enquirer. He had lived in Oxford during the time that these stamps were used, and had received many of them through the University posts. His paper served to draw attention to these forgotten issues, and the members of the Oxford Philatelic Society began a careful research into their history. Two gentlemen particularly distinguished themselves in their search for specimens and facts relating to them—Lieut. (now Capt.) G. F. Napier and Mr. J. R. F. Turner. This last-named gentleman already possessed a considerable collection of College stamps. They interviewed the various College authorities, bombarded the engravers and printers with requests for specimens, and ransacked the correspond-

ence of various firms in Oxford. The larger part of Lieutenant Napier's collection was dispersed at auction by Messrs. Ventone, Bull & Cooper, in December, 1894. The smaller portion was retained by him until about three years ago, when he parted with it to Messrs. P. L. Pemberton & Co. I was able to secure some interesting pieces from this portion of it. Mr. Turner's collection was shown at the Philatelic Exhibition in London, in 1897, and some time afterwards the bulk, if not the whole of it, passed into the possession of the Earl of Crawford.

An interesting, but not quite accurate, account by Mr. Turner of the various College issues appeared in the Philatelic supplement of the *Bazaar* in February, April, and June, 1895, and about the same time the first edition of Mr. Morley's Catalogue of Great Britain appeared. This catalogue contained a list of about eighty varieties of College stamps and cards, about half of which are priced for sale. This list was drawn up by Mr. Turner, and mentions a few varieties that were never issued. The first edition of Mr. Ewen's British Catalogue appeared in 1893, but College stamps were first noticed by him in the fifth edition, published in 1896. It is probable that Mr. Turner had a hand in revising Mr. Ewen's list of College stamps, as his name is mentioned among the collectors that assisted with the 1898 edition. A few more references to College stamps appeared in the Philatelic Magazines up till about three years ago, when there was published Mr. Hayman Cummings' work on the subject. Between the covers of this book is gathered practically all that is known about these stamps, every issue being photographed, many of them being on original covers. Some of the latter are of the utmost interest. To this work, and to several courteous letters from the author, I am indebted for much information, and to it I would refer anyone wanting a full account of these curious stamps.

The latest writer on the subject is, as far as I know, Mr. Percy C. Bishop, who published, in the *Collectors' Magazine* of March, 1905, a short account of College stamps, with a page of photographic illustrations.

To Mr. W. T. Wilson, of Birmingham, an eye witness of the use of these stamps. I am indebted for some interesting information. During the early eighties, Mr. Wilson had business relations with Messrs. Spiers & Son, of High Street, Oxford, who were then china and glass dealers and fancy stationers,

and who printed many of the College issues. Mr. Wilson was also a personal friend of Mr. Spiers, and, when calling upon him at his business address, he (Mr. Wilson) saw on many occasions a College messenger bring in a small article to be matched or mended, and stuck upon the article, to pay the portorage, would be a College stamp.

Before dealing with the stamps in detail, there are some points common to all of them that must be mentioned. None of them were issued for sale to collectors; they were all prepared for straightforward, genuine purposes. None of them were at any time surcharged. They are all on wove paper, and none of them show a watermark. The varieties of paper and perforations are very few, and such minor varieties of design that exist were accidental and not deliberate. The modern surcharging printer never had the opportunity of playing his too well-known tricks upon them, and the authorities that issued them never stooped to the questionable methods of some modern governments.

On June 23, 1870, Keble College was opened by the Marquis of Salisbury, Chancellor of the University. It was founded in memory of John Keble, and was intended for students of moderate means. The authorities of the College not only adopted the system of private posts in existence around them, but they almost at once improved upon them by issuing the first College stamp (fig. 1).

The curiosity of the Keble post was its obliterating stamp. The date of its first use is uncertain, but it was in use early in 1871. Some authorities hold that for some months at least the adhesive stamps were obliterated with a pencil. Certainly the notices of the first issue of Keble that appeared in the philatelic press in 1871 and 1872 speak of a pencil obliteration, and the latest writer on the subject, Mr. Percy C. Bishop, maintains that such was the case, but reliable data are wanting.

This obliterating stamp, when used, impressed upon the envelope and adhesive stamp five dots in the shape of an irregular cross. I have three such entries in my collection, and one of them bears two cancellations (fig. 1). It was in use several years, gradually fell out of use, or was occasionally mislaid, the dots being done with pen or pencil, and then in or about 1876 the custom of obliterating the stamps ceased altogether.

Early writers, and some recent catalogues, describe various cards, envelopes, and stamps of Keble as "Provisional issues"

and "parcel stamps;" but, owing to the researches of the Rev. Hayman Cummings, it is certain that no such issues ever took place. Mr. Cummings has made enquiries on the spot, and interviewed the actual officials whose duty it would have been to order, pay for, and issue these stamps, and there seems no doubt that these early writers were led astray by the incomplete information then available.

These so-called issues consisted of the Keble crest, such as can be seen on the flaps of the envelopes (not the College die), embossed in red or blue on envelopes, cards, and gummed paper. But these envelopes and cards were the ordinary envelopes and stationery of the College, and could be purchased at many of the stationers' shops in Oxford, and, as Professor Napier pointed out long ago, it is incredible that the authorities should have given franking power to an impression, over the manufacturer of which they had no control, when they had at hand, ready for use, the steel die from which the stamps were struck.

Another circumstance bearing on this question has not yet, I think, been pointed out. The embossed stamps of Keble were prepared by Messrs. Spiers & Son, but the authentic post cards and envelopes, embossed with the same stamp, from the same steel die, were supplied about the same time by another firm, Messrs. Emberlin & Sons, of Magdalen Street, Oxford. This points to the fact that this steel die was the property of the College, and was lent to the printers when necessary. In this way the College authorities were able to exercise a control over the manufacture of their stamps, which would not have been the case had the College crest been used as a stamp, for then almost any Oxford stationer could have printed them at will.

On the suppression of the College stamps, in 1886, the various Colleges reverted to the old system of dealing with their correspondence, with the exception of Keble, the youngest College and the oldest offender. This institution then issued a new envelope with the genuine College die embossed sideways, without colour, upon the flap of the envelope. They were in various shades of grey paper, and were sold to the undergraduates at 8d. per dozen, franking a letter to any part of Oxford. In 1895 these envelopes were changed to white and cream paper, and the die was embossed on the flap in an upright position. These are still in use now, and still have the same franking power.



There are in existence impressions of the genuine Keble die on various surface coloured papers, rouletted about 8, and without gum. They are usually described as proofs. No definite information can be obtained about them, and there is no evidence that they were ever issued for use. I have three examples, in green, blue, and red.

MERTON COLLEGE. (Founded in 1264 by Walter de Merton, Bishop of Rochester).—This College was the next to issue stamps, and they were brought into use in the latter part of 1876. Like the first stamps of Keble, they were embossed from a steel die on surface coloured paper, but the die was circular, and the paper of a bright blue colour. They were produced in vertical strips of thirteen, with a very rough perforation between each impression, making them imperforate each side, and rough perf.  $12\frac{1}{2}$  top and bottom. A printing was also made on paper of a much lighter blue, with a clean cut perf. 12. A third printing from this die exists, on very dark blue paper, with similar perforation to the last. Of this printing only four copies are known to exist, one used on entire, and a mint strip of three. All four of these are in the collection of Mr. Cummings.

A fourth variety of this embossed stamp exists. It was printed from a quite different die, in horizontal strips, on dark blue paper, clean cut perf. 12 between each impression, so that the stamps are imperforate top and bottom, and perforated each side. The die of this stamp differs from that of the preceding issues chiefly in that the letters of the inscription are differently shaped and a little larger. Five copies are known to exist. One of them is on a letter addressed to Messrs. F. & H. Bacon, 31 Broad Street, Oxford, and endorsed, as all their letters are, with the date of receipt, 19th January, 1883. It was found by Mr. Turner when he searched this firm's correspondence. It is now in the Earl of Crawford's collection. I have a photograph of it taken at the time it was in Mr. Turner's possession. Another copy on entire is in Mr. Cummings' collection. It is addressed to Messrs. T. & G. Mallam, 126 High Street, Oxford, and dated June 6th, 1881, eighteen months before the other. A complete mystery attaches to this stamp. No one knows who printed it, or in what numbers, or when it was issued. With the possible exception of this stamp, all the Merton issues were supplied by Messrs. Emberlin & Sons.

The first stamp of Merton, that on bright blue paper, is

known to have been issued late in 1876. The second stamp, pale blue, is known to have been in use in 1879, 1880, and 1881; its exact date of issue is unknown. Of the third stamp the only used copy known is not dated, and of the fourth variety, the only two used copies on entires are dated as far apart as June, 1881, and January, 1883.

Although I have named these stamps in the above sequence it does not follow that such is their order of issue. Like the embossed stamps of Keble, much has yet to be discovered about them, and as practically all sources of information have been exhausted, it is probable that much will have to remain conjecture. The only hope of further information lies in the discovery of dated envelopes bearing stamps. But, unfortunately, rare as are these envelopes, the dated ones are far rarer still.

The last batch of Merton stamps came from the printers on January 29th, 1883. They were lithographed in bright mauve colour, and perforated 12 (fig. 4); made up in two panes of 24 each. I have one pane in my collection. Despite the number of remainders that must have existed, these stamps are really rare. Only three entire sheets are known.

Some envelopes exist bearing an impression of the Merton die, in dark blue, on the top right corner. Only three are known. One of them is used, and dated, April 23rd, 1879. They were probably supplied by Messrs. Emberlin & Son, but when, and in what numbers, cannot be discovered.

Post cards were also issued by Merton. They bear the same stamps as the envelopes, in dark blue, on the middle of the upper margin. I have two unused specimens. A few used copies are known.

All the Merton issues were sold at one half-penny each.

HERTFORD was the next College to have stamps and stamped stationery, and some of the details relating to its issues are as obscure as those of the early issues of Keble and Merton.

Hertford College was founded in 1282, by Elias de Hertford under the name of Hart or Hertford Hall. It was dissolved in 1805, and its property handed over to Magdalen Hall. Magdalen itself was dissolved in 1874, and Hertford College re-incorporated.

Almost at once the question of stamps was raised, and an entry in the College Minutes shows that the matter was being discussed in 1875. Soon after that date fifteen thousand

stamps were ordered from Messrs. Spiers & Son, apparently by the Rev. G. S. Ward of the College, on his own responsibility, and part were delivered in December of that year. At the same time seven thousand envelopes were ordered, and these were supplied in January, 1876. And then, with a stock, part delivered and part ordered, of 15,000 stamps and 7000 envelopes, what happened?—nothing!

For three years these stamps and envelopes appear to have lain unused and forgotten, and, incredible as it may seem, a further supply of 7000 envelopes was ordered from, and supplied by, Messrs. Spiers & Son in 1879. No record has been found at the College as to when these various supplies were put into use, and the few used copies that exist are not dated. The only evidence as to the dates of issue is supplied by the recollections of persons residing in the College at the time, and, as far as can be gathered, no envelopes were in use before 1879, and no stamps were issued before 1882.

Like Keble, Hertford had an obliterating stamp. It is in the shape of a Maltese Cross, with a spear-like prolongation beneath. I have two impressions from it on a piece of paper. They were originally in the Napier collection with four others, on one piece of paper. A photograph of the four others was published, by Mr. Percy C. Bishop, in the *Collector's Magazine* of March, 1905.

The design of the Hertford stamps (figs. 5, 6, 7) consists of the College Arms, a hart's head, on a shield between two curved bands, inscribed, "Hertford college." The background is filled with small Maltese Crosses, each having a spear-like prolongation below, a design identical with the obliterating stamp described above. These adhesives are lithographed in shades of mauve on white paper, perf.  $11\frac{1}{2}$  to 12, sometimes rough, sometimes clean-cut. Beneath each stamp, in minute lettering, can be seen the name and address of the printers, "Spiers & Son, 102 and 103 High St., 1, 2, and 3 Oriel St., Oxford." Certainly a long inscription for so small a space. The sheet contains seven rows of five stamps.

Three or four used copies are known on entires, and only one of them, on a long blue foolscap envelope, bears the official cancellation. It is in the collection of the Earl of Crawford.

Another unique piece in the same collection must be mentioned. It is the original wrapper in which the sheets of stamps were delivered by the printers. It bears on it one of

the stamps, probably as sample of the contents, and also some written figures in blue pencil. These figures are said to be in the handwriting of Mr. J. Howson, the College butler, who checked the contents of the parcel, and they show that the number of sheets was 99, a total of 3,465 stamps out of the 15,000 ordered.

Mr. Cummings, in describing the blue foolscap envelope, says that it is addressed to Rev. G. S. Ward, Fellows' Lodgings, Hertford College. This is clearly an error. It is the wrapper from the printers that is thus addressed. The blue envelope is addressed to Messrs. T. & G. Mallam, and when I examined it at the International Exhibition in May last, I noticed that this envelope and stamp bore two impressions of the Maltese Cross cancellation, and that the stamp was number 32 on the sheet. The stamp on the printer's wrapper is number 24.

There is something else that I wish to record in connection with these stamps. There are four distinct varieties of perforation and shades. The first is found in a bluish shade of mauve, with a very rough perf.  $11\frac{1}{2}$  (fig. 5). I call this variety A. It is also found in a lighter shade of mauve, with a clean-cut perf.  $11\frac{1}{2}$ . I call this variety B (fig. 7). The margin of the sheet is not perforated, and I believe this to be the case also with the first variety. Thus a stamp from the margin of the sheet would be imperf. on one side, at least, while the four corner stamps would each have two imperforate margins. A corner block of four, showing all these peculiarities, is illustrated in Mr. Cummings' book, but the author does not call attention to them. A third variety, that I call C, is similar to the last, but the margin of the sheet is perforated. I have seen a strip of three with margin attached. The fourth variety, D, is very distinct. It is in the pale shade of colour, the perforations are clean-cut, and gauge a trifle over 12, almost  $12\frac{1}{2}$ . The margin of the sheet is perforated. Mr. J. R. F. Turner, in the *Phil. Supp.* to the *Bazaar*, June, 1895, mentions a  $12\frac{1}{2}$  variety, and describes it as a reprint. His words are:—"A few sheets were printed prior to 1890 for the Oxford stationer who furnished the originals, part being sent to a collector who wrote for some of the Hertford stamps, and part being kept in stock, presumably as patterns." From the description given by Mr. Turner of this so-called reprint, I judge them to be identical with variety D, of which I have an entire sheet. Opposed to Mr. Turner's statement, I have Mr.

W. T. Wilson's positive assurance that this identical sheet was given him by Mr. Spiers but a few months after the stamps were suppressed.

I have made a special study of these Hertford stamps, and, in addition to carefully examining on several days all the specimens shown at the recent exhibition, I have also been able to see a goodly number through the courtesy of Messrs. Nissen, Pemberton, and others, and am satisfied that this sheet is on a par with nearly all these specimens. I have neither time nor space to enter into detailed reasons here. But this I will say—that *should* further investigations show that all the above four varieties are not genuine originals, then I foresee that the stamps answering this description will be found to be only those of variety A, *i.e.*, bluish-mauve colour and rough perforations. As far as I could see, looking through the glass case, the specimen stamp on the printer's wrapper is of this description. Should this point ever be established, three-fourths of the specimens extant in the best collections will have their status seriously lowered. Seeing that only a small part of the order of 15,000 was delivered to the College, it has been suggested by more than one writer that a number of sheets were retained by the printer as samples, and that these remainders have subsequently found their way into several collections. It is known that some unperforated remainder sheets were so distributed—I have half of one in this condition, and I have been given in confidence the name of a collector for whom one or two of these sheets are said to have been perforated a few years before Mr. Turner wrote his article. It is, perhaps, this circumstance that Mr. Turner had in mind when speaking of reprints. Whatever may be the case, this is another of these perplexing questions yet to be solved in connection with College stamps.

I have yet another fact to place on record in connection with these stamps. Three varieties of design have hitherto been described,—

(1) With colon after Hertford. I have never seen it, and it is not to be seen upon any of the entire sheets that I have examined.

(2) With full stop between Hert and ford. This is number 17 on the sheet. This full stop is in reality a triangular dot.

(3) With hyphen between Hert and ford. This is number 28 on the sheet. This hyphen is an elongated dot.

These two last varieties have been known a long time, and

are listed with the first variety in Mr. Morley's catalogue of ten years ago. But, as a matter of fact, there are 35 varieties on the sheet, each stamp differing from the others, and they can be plated. I have examined a great many Hertford stamps in singles, blocks, and sheets, during the last few years, and with one single exception, a specimen in the Crawford collection (possibly number 3), I have been able to assign to each stamp its position on the sheet. I have drawn up a description of these 35 varieties for my own guidance, but I dare not inflict this upon any one else.

A few varieties, however, deserve mention :—

- No. 1. Outline of stag's antler broken between 2nd and 3rd point on left side of stamp.
- No. 2. Well-marked break in thick frame line opposite right end of top label.
- No. 6. Small dot left end of bottom label. Large dot between L and E.
- No. 10. Wide break in thick frame line above 1st R of Hertford ; narrow break above 2nd R.
- No. 21. Dot before H ; one large and one small dot between TF ; dot before C ; dot between EG ; two dots (colon) after College instead of one.

But enough of this "dotty philately."

The issues of the other Colleges are free from complications, and will be described in their chronological order.

#### KEBLE COLLEGE.

*1st issue.*—End of 1870 or beginning of 1871. Embossed on orange surface-coloured paper, rough perf. 11. Supplied by Messrs. Spiers & Son, of High Street, Oxford. Quantities supplied unknown. Used up to 1876, concurrently with following issues. Rare used or unused. Among mine are three used on original envelopes, each with the official "five dots" obliteration (fig. 1).

*2nd issue.*—Same die and paper, but clean-cut perf. 12. Same printers. Numbers and exact date unknown. Used as early as 1874, but mostly in 1876.

*3rd issue.*—About same time as last ; same die and printers, but on rose-pink paper, rough perf. 11.

*4th issue.*—About 1876. Same die, on deep carmine surface-coloured paper. A large square stamp. Same printers. Rough perf. 11 top and bottom, imperf. at sides.

*5th issue.*—October 1876. Lithographed by the same printers in shades of blue on white paper, rough perf.  $11\frac{1}{2}$  (fig. 2a). The printer's name and address appear in small letters beneath each stamp. Probably two printings, a. ultramarine, b. cobalt. By no means common. No entire sheet is known. The largest known block is one of twelve in the Earl of Crawford's collection. I have a mint block of six, showing margin on two sides; also a used copy on entire envelope, dated October 20, 1881.

A variety of this stamp has been described by various writers, as being "without name at bottom." I have never seen it, nor have I ever seen anyone that has seen it, although I have advertised for it. I have seen several copies that might have passed for it, but all of them were perforated at bottom, close up to the design. Until this stamp is produced with a clear margin at the bottom, showing no name, I shall continue to deny its existence.

*6th issue and last.*—October, 1882. Supplied by Messrs. Emberlin & Son, of Magdalen Street, Oxford, who, for many years, had been supplying the ordinary stationery of the College. Lithographed in blue, in sheets of 48 (two panes of 24). It resembles the last Spiers' issue, but has slightly larger letters, the stars are smaller, and clean-cut perf. 12 instead of rough perf.  $11\frac{1}{2}$ . The printers did not put their name beneath the stamp (fig. 3). Three entire sheets are known. I have a block of six, and two used on original envelopes.

*Envelopes.*—Issued about 1870 or 1871. Size,  $4\frac{3}{4}$  by  $3\frac{3}{4}$ . Bear an impression, in red, of the embossed stamp at top right corner. They were sold at 1s 3d a dozen. About thirty copies are known, used and unused.

*Postcards.*—Size,  $4\frac{1}{2}$  by 3. Bear the red embossed stamp in the middle of the top margin. Sold at one half-penny. I have two copies of this rare card. One is unused the other, used by J. A. Shaw Stewart, Esq., Bursar of Keble College, is dated 18/2/76, and is addressed, "Messrs. Emberlin, Magdalen Street."

Keble College still franks its local correspondence by means of envelopes. They are court shaped, and bear an uncoloured impression of the College die on the flap.

#### MERTON.

*1st issue.*—1876. A shield with the College Arms, in a circular band with name embossed on bright blue surfaced paper. Produced in vertical strips of thirteen, roughly per-

forated  $12\frac{1}{2}$  between each impression. Printed by Emberlin & Sons.

*2nd issue.*—1879 or earlier. Similar to first, but colour much lighter and clean cut perf. 12. Same printers.

*3rd issue.*—Date unknown. As last, but colour very dark. Same printers.

*4th issue.*—Date unknown, but used in 1881 and 1883. Embossed in horizontal strips of very dark blue paper, clean cut perf. 12 between, making the stamps imperf. top and bottom, and perforated at sides. Name of printers and numbers printed unknown. The die differs from the three preceding issues.

*5th issue.*—1883. The College Arms set in a rectangular frame, and lithographed in bright mauve in sheets of 48 (two panes of 24) perf. 12 (fig. 4).

*Envelope.*—White laid paper,  $4\frac{3}{4} \times 2\frac{5}{8}$ , Colledge die (1st type) embossed in blue on top right corner. Only three copies are known to exist. Date of issue unknown.

*Postcards.*—White card,  $4\frac{1}{2} \times 3$ . The same die embossed in dark blue on centre of upper margin. I have two unused copies.

The paper of the embossed issues of Merton and Keble appears to be of a spongy and brittle nature, and the steel die often split the paper along the edge of the design. The stamps, when separated, would sometimes tear along this edge instead of along the perforation. As a result, I have seen several Keble stamps that have clearly been cut apart by scissors, and in the case of Merton there are a number of envelopes known that bear only the central circular part of the stamp, it having fallen apart on being handled, and the outer part thrown away as not being essential.

**LINCOLN COLLEGE.**—(Founded in 1427 by Richard Fleming, Bishop of Lincoln, and re-founded in 1478 by Thomas Rotheram, Bishop of Lincoln, afterwards Lord Chancellor and Archbishop of York).

Lincoln issued its only stamp in 1877. There were three other subsequent printings, each in a lighter shade than the preceding one. The first printing, in dark indigo blue, is rather rare. The design (fig. 8) consists of a bishop's mitre in an oval band, bearing the words "message, one penny." They were printed in shades of dark blue, in sheets of 48, from a



steel plate engraved by Mr. A. Wyon, of Regent Street, London. Perf. 14. As far as can be known, this is the only College stamp not produced locally.

The obliteration was usually a pencil mark. Three mint sheets are known, also a few sheets of imperforate proofs. A proof sheet in black was originally in the Napier Collection; half of it is now in the collection of Mr. Cummings, the other half has been cut up and mostly lost trace of.

HERTFORD.—*Envelopes.* As already stated, these were obtained in two lots. The first lot (1876) had the stamp embossed in mauve, the second lot (1879) had the stamp in blue.

Each lot consisted of 7,000, in four different shapes and sizes. Among the first lot was an official envelope bearing on the front the words "College Notice," with a space for the addressee's name. The design of the stamp consists of the College Arms within an oval band, and was embossed at the top right corner.

*Adhesives* (figs. 5, 6, 7).—These have been already fully dealt with.

*Postcards.*—A postcard was also issued. The stamp, similar to that on the envelopes, is in blue. As far as can be learnt only one thousand were printed. No used copy is recorded.

Notwithstanding the scarcity of some College stamps no forgeries are known. But forgeries of what might be termed their accessories are known. For instance, forgeries of the Keble obliterations have been seen. Fig. 5 shows something new. It is a Hertford stamp with a roulette top and bottom. I have photographed it between two ordinary copies, and it will be seen that it is shorter than the other two. In fact, it is much shorter than any of the many copies I have compared it with. A careful examination of the top margin shows that the points of the roulette have been cut and not torn—in fact, trimmed with a knife or scissors. There are several other reasons that satisfy me that this roulette is not genuine. The stamp itself is genuine, and so is the rough perforation on each side. I have lately heard of a second similar copy. I fancy that it must have passed through the same ingenious hands as this one.

EXETER.—(Founded in 1314 by Walter de Stapleton, Bishop of Exeter.)

The stamps of Exeter College (fig. 9) were supplied by Messrs. Emberlin & Son on November 11, 1882. They are lithographed in shades of salmon-red, in sheets of 96 stamps, perf. 12.

Among the used copies known on entire is one dated June 4, 1886, a very late date, seeing that all College stamps were withdrawn early in that year. Among mine are three used on entires, addressed to well-known Oxford firms. Unfortunately they are not dated. I have lately been shown, by Messrs. Charles Nissen & Co., an imperforate Exeter stamp. The colours differ slightly from the ordinary copies, and the width of the margins make it practically impossible for it to be a trimmed copy, unless some of the perforated sheets were issued with imperforate margins, as in the case of some College issues. It is probably a proof, although none have yet been described in connection with Exeter College. Fig. 9a is a photograph of it.

Exeter also issued a postcard. The stamp is circular in design, and is embossed in red on the centre of the top margin of the card.

Date of issue and numbers unknown. About twelve or fifteen specimens are known to exist.

ALL SOULS COLLEGE.—(Founded in 1437 by Archbishop Chichele, to provide masses for the souls of the departed, especially these killed in the Hundred Years' War. Its statutes were formally issued April 2, 1443.)

Its stamps were issued in 1884 (fig. 10). Lithographed by Messrs. Spiers & Son, in shades of blue, in sheets of 40, and perforated  $11\frac{1}{2}$ . One consignment of 15,000 was sent in on January 26, 1884. Several varieties are described, due to imperfect printing and irregular perforation. I have not seen them.

There were large numbers of remainders, and this stamp unused is probably the commonest of the College issues. Used copies on original envelopes are rather rare. I have an entire sheet in mint condition.

ST. JOHN'S, OXFORD.—(Founded in 1555, replacing the earlier college of St. Bernard.)

The stamps were issued in 1884 (fig. 11). Lithographed by Messrs. Emberlin & Son, in half sheets of 48, and perforated 12. The colour is a dirty slate blue. One thousand half-sheets were supplied on January 19, 1884. There were many remainders, and these stamps share, with those of All

Souls College, the distinction of being the commonest of the unused College issues.

Used copies are rare. I have one on entire, and one obliterated with a pencil-mark, on piece (fig. 11). This last shows a curious variety, the J of John's being misshapen, and resembling an inverted F. I do not know the position of this variety on the sheet. It must be rare, as I have examined quite a number of large blocks without finding it. It may have been discovered in the course of printing and corrected.

BALIOI.—(Founded between 1263 and 1268 by, it is said, Sir John Baliol and his wife, Devorquilla, parents of John Baliol, King of Scotland. Its original statutes were issued by Lady Devorquilla de Baliol in 1282.)

The stamps were procured in 1885, but the suppression of the College issues shortly after prevented their being used or even issued. The design (fig. 12) consists of a double shield, one within the other, embossed in red on white paper. Produced in vertical strips of seventeen, and perforated  $11\frac{1}{2}$  between the impressions. The strips were fed into the stamping machine by hand, and, when about half way through, the strip of paper was reversed and put in the other way. The result was a tête-bêche pair about the middle of each strip. I have seen a strip where the tête-bêche pair is the second and third stamp from the end. The number supplied to the College is not known, but cannot have been great. I do not know who printed them.

CORPUS CHRISTI COLLEGE made an attempt, in 1885, to issue stamps. It got no further than the making of the die. It would be interesting to know what the design was.

BODLEIAN LIBRARY.—This institution used, apparently at the same time that College stamps were in use, a card bearing a stamp-like impression of the Oxford University Arms on the upper right corner. The colour is a pale slatish blue, on white card,  $4\frac{1}{2} \times 3$ , and its general appearance suggests a post card.

Mr. Cummings, to whom I showed my copy, had never seen or heard of one, but he was good enough to make enquiries in Oxford, and he tells me that these cards were never sold or "issued" in the sense that post cards would be, but were

used as message cards as this one evidently was. The back clearly indicates its purpose. It is printed in slate-blue ink and reads :—

“ BODLEIAN LIBRARY.

The Librarian begs to inform you of the following additions to the Library :—

Author, title, and date.                      Pressmark.”

The blanks are filled up by hand. There may be others known, but I have not heard of them. This one came from the collection of Capt. G. F. Napier, and is addressed to his brother, Professor Napier, 1 Broad Street. It is dated 18/2/86. It is certainly a great curiosity, and might be described as an official post card.

There exist re-impressions in black of the dies of Exeter, Merton (type I.), St. John's, Oxford, and Keble (type III.). I have it on good authority that only six sets were printed. The particular set in my collection was originally presented to Professor Napier.

**THE OXFORD UNION SOCIETY.**—This Society stamps the letters of its members, and provides them with stamped stationery. From the year 1857 onward the ordinary penny stamps used by the Society in this way were surcharged with the letters O.U.S. between two parallel vertical wavy lines, in red, carmine, or violet. Up till about 1870 the surcharge was placed on the face of the stamp, later it appears on the back. The use of this surcharge ceased about 1882. No record of the actual date can be found among the papers of the Society, and the existence of some used copies, dated later than 1882, can be explained by the fact that these copies were probably not used until a year or two after being issued. These are not College stamps, but are Government issues surcharged for private use. The fact that they are often described with College stamps is my only excuse for this reference to them.

**CAMBRIDGE.**—The issues of Cambridge are only three in number, and offer no complications.

**SELWYN COLLEGE.**—(Founded in 1882, in memory of George Augustus Selwyn, Bishop of Lichfield. It was intended for students of moderate means.)

As in the case of Oxford, the youngest of the Cambridge Colleges was the first to issue stamps. They were issued very soon after the College was opened, in 1882. The design (fig. 13) consists of the College Arms on a shield, with name upon a ribbon at foot, and lithographed in black on pink paper. The paper is sometimes described as chalk-surfaced, but, as in the case of some modern stamps, the amount of chalk is very slight and difficult to distinguish. The paper, however, is rather transparent, and, in all copies I have seen, the design shows clearly at the back. I have had this peculiarity pointed out to me as a rare variety, and priced accordingly, by people that ought to have known better.

Among my copies is one used on a piece of College envelope, and one obliterated with initials.

They were printed in imperforate sheets by W. P. Spalding, of Cambridge, and cut up into single specimens before delivery. Thus pairs and blocks are unknown.

QUEENS' COLLEGE.—The stamps were issued in 1883 (fig. 14). Lithographed in bright green on thick white paper, perf. 12. The margin of the sheet is imperforate. Printed by W. P. Spalding, in sheets of 96.

A variety, as yet unrecorded, exists, showing a broken g in Cambridge, this letter resembling a u. It is the 7th stamp on the 6th row of the sheet (fig. 14).

It will be noted that upon the stamps there is an apostrophe after the s of Queens', and not before, thus making the word plural possessive. At first I thought this might be a "hitherto unchronicled variety" occurring upon all the stamps, in fact, an error in designing them, especially as all writers on the subject, except Mr. P. C. Bishop, invariably speak of the College as Queen's. But, on looking into the history of the College, I find that there is a good reason for the plural. And this reason dates from the foundation, over four hundred years ago. The College was founded in 1448, by Margaret, Consort of Henry VI. When this King was deposed, in 1461, and Edward IV. took his place, the Master of the College, with commendable forethought, hastened to Court, saw the new Queen, Elizabeth Woodville, won her graces, and returned to Cambridge with her promise of patronage and support. Elizabeth eventually kept her word, and these rival Queens are jointly honoured as founders of the College. Hence the plural.

To this College belongs the credit of furnishing the rarest example of a College stamp in a used condition. A single copy only of this stamp is known in this state. It was found but a few months ago in a quantity of stuff that had lain unsorted for many years in the stock of Messrs. Charles Nissen & Co. It is pen-cancelled on an envelope of the Cambridge Union Society, addressed to a resident in Pembroke College, initialled in the lower left corner, as most College entires are, and dated October 15, 1883. It is now in my collection.

ST. JOHN'S COLLEGE.—(Founded in 1511 by Lady Margaret de Beaufort, replacing St. John's Hospital, which dated from the twelfth century.)

This College issued its stamps in 1883. The design (fig. 15) represents an eagle standing upon a ribbon, inscribed, "St. John's Coll. Messenger." Lithographed in vermilion, and perf. 12. Supplied by W. P. Spalding in sheets of 96. The margin of the sheet is imperforate. Not rare unused, but very rare used on entires. Among my copies are three pen-cancelled specimens.

None of the Cambridge Colleges issued stamped envelopes or postcards.

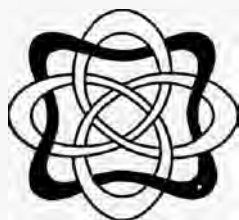
Another peculiarity of College stamps should be pointed out. They were, with the exception of Lincoln, all of local production, and produced by workmen that were probably not too well versed in the inking of plates and lithographic stones. The result is that several distinct shades can be seen upon the *same* sheet. I have noticed this especially in the case of several large blocks of Queens' and St. John's (Camb.) Colleges, and, in the case of the former, so great is the difference in some cases that were the stamps separated from one another it would be impossible to convince an ordinary collector that the stamps were of the same printing, much less from the same sheet. This bears out the opinion I have long held, that differences of *shades* in stamps, as opposed to differences of *tint*, are due to the amount of ink present, rather than to its nature. Further, it shows that even a marked difference of shade does not necessarily indicate a separate printing.

There are twenty-one colleges at Oxford, and twenty at Cambridge. The example set by Keble in 1870 was timidly followed at a few years' interval by three other colleges.

After 1881 the custom spread more rapidly, until, on the withdrawal of the stamps, nine Oxford and three Cambridge Colleges were using, or preparing to use, them. What would have happened had the post office not interfered? Perhaps all the forty-one colleges would now be issuing stamps and vying with one another in the complexity of their surcharges, and in the number of their commemorative issues.

Are College stamps "postage stamps"? Are they "collectable"? whatever that may mean. Are they worthy the attention of philatelists? Much ink has been used up in discussing these questions. To me it is sufficient that they are interesting, and that their collection and study affords me pleasure.

L. SAVOURNIN.



## The "Cut Out" Postage Stamps of Great Britain.

*Embossed and Impressed Cut-out Stamps which came into use in 1905 as Adhesive Postage Stamps under the Act of Parliament of 1904.*

### A REFERENCE LIST AND GUIDE TO VALUES COMPILED BY CHARLES NISSEN.

CUT-OUT Stamps of Great Britain were made available for adhesive use under an Act passed in 1904, and the following Notice to the Public appeared in "The Post Office Report":—

The Post Office Act of last session enabled me to withdraw the prohibition of the use of cut-out stamps in payment of postage as from the 31st December; and embossed or impressed postage stamps cut out of envelopes, post cards, letter cards, wrappers, or telegram forms may now be used as adhesive stamps for the purpose of pre-paying postage.

28th July, 1905.

POSTMASTER GENERAL.

Values are for cut square copies on piece of the original; copies that are cut to shape are worth about 50 per cent. under these prices given.

#### From ENVELOPES.

##### Halfpenny.

							<i>s. d.</i>
$\frac{1}{2}$ d	pink,	die No.	...	..	...	...	0 9
$\frac{1}{2}$ d	vermilion,	"	...	...	...	...	0 4
$\frac{3}{4}$ d	"	die S.H.	...	...	...	...	2 0
$\frac{1}{2}$ d	"	no die No.	...	...	...	...	0 2
$\frac{3}{4}$ d	green,	"	...	..	...	...	0 2
$\frac{1}{2}$ d	"	die No.	...	...	...	...	0 4

##### *With Silk Threads.*

1d	pink, undated,	with die No.	...	...	...	...	1 0
1d	"	dated,	"	...	...	...	2 6
2d	blue, undated,	"	...	...	...	...	3 6



**One Penny.***Without any Silk Threads.*

1d pink, die I., dated with die No.	...	...	...	2	0
1d " die II., " " " " " "	...	...	...	0	6
1d " " undated, " with die No.	...	...	...	0	6
1d " " " " " " S.H.	...	...	...	0	6
1d " " " " " " no die No.	...	...	...	0	4
1d blue (Post Card type)	...	...	...	0	9

**Three-Halfpence.**

1½d lilac, dated florets, die No.	...	...	...	1	6
1½d brown, " " " " " "	...	...	...	0	9
1½d yellow, " " " " " "	...	...	...	1	0
1½d " " 9 dot florets, " " " "	...	...	...	0	9
1½d " " " " die S.H.	...	...	...	—	—
1½d " " with arrows, die No.	...	...	...	3	6

**Two Pence.**

2d blue, dated florets, die No.	...	...	...	0	9
2d lake, " " " " " "	...	...	...	1	0
2d " " 5 dot florets, " " " "	...	...	...	—	—
2d " " 9 " " " " " "	...	...	...	0	6

**Twopence-Halfpenny.**

2½d lake, dated florets, die No.	...	...	...	0	9
2½d blue, " " " " " "	...	...	...	1	0
2½d " " 5 dot florets, " " " "	...	...	...	1	3
2½d " " 9 " " " " " "	...	...	...	1	0
2½d " " without florets	...	...	...	0	4

**Three Pence.**

3d rose, dated, die No.	...	...	...	1	3
3d " " 5 dot florets, " " " "	...	...	...	1	0
3d " " 9 " " " " " "	...	...	...	0	8

**Four Pence.**

4d vermilion, dated, die No.	...	...	...	1	3
4d " " 9 dot florets " " " "	...	...	...	0	8

**Six Pence.**

6d violet, dated, die No.	...	...	...	2	0
6d mauve, " " " " " "	...	...	...	1	0
6d violet, 5 dot florets, " " " "	...	...	...	7	6
6d " " 9 " " " " " "	...	...	...	7	6
6d " " without florets, die No.	...	...	...	0	9

**Ten Pence.**

10d red brown, die No.	...	...	...	1	3
10d blue, error of colour, " " " "	...	...	...	15	0

**One Shilling.**

1/- green, dated, die No.	...	...	...	1	3
1/- " " undated, " " " "	...	...	...	—	—
1/- " " 5 dot florets, " " " "	...	...	...	3	6
1/- " " 9 " " " " " "	...	...	...	3	0

**Circular Stamp from Telegraph Form.**

1/- green, dated, die No.	...	...	...	4	0
---------------------------	-----	-----	-----	---	---

**From REGISTRATION ENVELOPES.****Queen Victoria Series.**

2d blue, with band (for registration only)	...	...	...	...	2 6
<i>Special Design.</i>					
2d blue, dated, die No.	...	...	...	...	0 6
2d ,, 5 dot florets, ,,	...	...	...	...	0 6
2d ,, 9 ,,	...	...	...	...	0 6
2d ,, mixed florets, ,,	...	...	...	...	1 0
<i>Smaller Design without florets.</i>					
2d blue, die No.	...	...	...	...	0 6

**From WRAPPERS.****Queen Victoria Series.***Dated.*

$\frac{1}{2}$ d green, ..	...	...	...	...	1 0
<i>Embossed instead of impressed.</i>					
* $\frac{1}{2}$ d green, with die No.	...	...	...	...	1 0
* $\frac{1}{2}$ d ,, no ,,	...	...	...	...	0 6
<i>Undated.</i>					
$\frac{1}{2}$ d green, type I.	...	...	...	...	0 2
$\frac{1}{2}$ d brown, ,, I.	...	...	...	...	0 2
$\frac{1}{2}$ d ,, ,, II.	...	...	...	...	0 1
$\frac{1}{2}$ d green, ,, II.	...	...	...	...	0 2
1d brown	...	...	...	...	0 3

\*Employed for Vaccination Certificates only.

**From POST CARDS.****Queen Victoria Series.**

$\frac{1}{2}$ d violet, value at foot	...	...	...	...	0 2
$\frac{1}{2}$ d brown, ,,	...	...	...	...	0 3
$\frac{1}{2}$ d ,, value at top	...	...	...	...	0 1
$\frac{1}{2}$ d green, ,,	...	...	...	...	0 1
1d brown, ...	...	...	...	...	0 3
1d rose	...	...	...	...	3 6
1d vermilion, full length portrait	...	...	...	...	0 1
1 $\frac{1}{2}$ d red brown	...	...	...	...	0 6
1 $\frac{1}{2}$ d brown	...	...	...	...	0 4
2d ,,	...	...	...	...	0 8
3d red	...	...	...	...	0 5

**From LETTER CARDS.**

1d carmine	...	...	...	...	0 1
------------	-----	-----	-----	-----	-----

**King Edward VII. Issue.****ENVELOPES.****Post Office Series.***Dies B.R.*

$\frac{1}{2}$ d dark green	...	...	...	...	0 2
$\frac{1}{2}$ d yellow green	...	...	...	...	0 1
1d carmine	...	...	...	...	0 1
2 $\frac{1}{2}$ d blue	...	...	...	...	—

**Somerset House Series.**

*With die numbers.*

½d dark green	...	...	...	...	...	0	4
½d pale green ...	...	...	...	...	...	0	2
1d carmine ...	...	...	...	...	...	0	3
1½d yellow ...	...	...	...	...	...	0	4
2d lake ...	...	...	...	...	...	0	4
2½d blue ...	...	...	...	...	...	0	4
3d brown ...	...	...	...	...	...	0	4
4d vermilion ...	...	...	...	...	...	0	5
6d violet ...	...	...	...	...	...	0	6
10d red brown ...	...	...	...	...	...	1	0
1/- yellow green	...	...	...	...	...	1	3

**From REGISTRATION ENVELOPES.**

3d brown, with die No.	...	...	...	...	...	0	4
------------------------	-----	-----	-----	-----	-----	---	---

**From WRAPPERS.**

½d dark green	...	...	...	...	...	0	2
½d yellow green	...	...	...	...	...	0	1
1d red ...	...	...	...	...	...	0	2
1d orange red	...	...	...	...	...	0	6

**From POST CARDS.**

½d dark green	..	...	...	...	...	0	2
½d yellow green	...	...	...	...	...	0	1
1d rose ...	...	...	...	...	...	0	3

**From LETTER CARD.**

1d carmine ...	...	...	...	...	...	0	3
----------------	-----	-----	-----	-----	-----	---	---



## The Philatelic Literary Index for 1906.

COMPILED BY PERCY C. BISHOP.

*The Abbreviations used for the Titles of Journals are as follows:—*

AM.J.P.,	-	-	-	American Journal of Philately.
A.P.,	-	-	-	Australian Philatelist.
A.S.M.C.,	-	-	-	Alfred Smith & Son's Monthly Circular.
B.G.P.J.,	-	-	-	British Guiana Philatelic Journal.
E.W.S.N.,	-	-	-	Ewen's Weekly Stamp News.
G.S.W.,	-	-	-	Gibbons' Stamp Weekly.
L.P.,	-	-	-	London Philatelist.
M.W.S.N.,	-	-	-	Mekcel's Weekly Stamp News.
M.P.J.,	-	-	-	Morley's Philatelic Journal.
P.J.I.,	-	-	-	Philatelic Journal of India.
P.R.,	-	-	-	Philatelic Record.
P.J.G.B.,	-	-	-	Philatelic Journal of Great Britain.
P.W.,	-	-	-	Philatelic West.
Perf.,	-	-	-	Perforator.
S.G.M.J.,	-	-	-	Stanley Gibbons' Monthly Journal.
S.C.A.,	-	-	-	Stamp Collectors' Annual.
S.C.F.,	-	-	-	Stamp Collectors' Fortnightly.
S.C.,	-	-	-	Stamp Collector.
W.E.P.,	-	-	-	West End Philatelist.

---

### EXPLANATORY NOTE.

In the majority of cases the items in the following compilation are indexed by means of the number of volume (in Roman numerals) and the number of page (ordinary numerals). Thus, "P.R., XXVIII., 11" means page 11 of the 28th volume of the "Philatelic Record." In certain instances, however, there is no division into volumes—this applies notably to "Alfred Smith's Monthly Circular" and "Ewen's Weekly Stamp News." In the former case we give the number of the issue and the page; in the latter case the page number only is given.

- Advice to Young Collectors, by "Free Lance," A.P., XIII., 10.  
 Advice to Stamp Collectors, by L. G. Dorpat, P.W., *all numbers*.  
 Afghanistan, by L. G. Dorpat, M.W.S.N., XX., 343.  
 Afghanistan, Designs of, by C. A. Howes, Am.J.P., XIX., 150.  
 Afghanistan, The Adhesive Revenue Stamps of, by E. W. Wetherell, P.J.I., X., 292.  
 Alwar, The Dagger on the Stamps of, S.C., X., 40.  
 Alsace-Lorraine, Official Imitations of, Am.J.P., XIX., 337.  
 American Philatelic Association, 21st Annual Convention of, by C. A. Howes, Am. J.P., XIX., 301; by Wyllard O. Wylie, M.W.S.N., XX., 297.  
 Archer's Perforation, by H. S. Hodson, P.R., XXVIII., 226.  
 Argentina: Issues of 1892-98 (translated), P.R., XXVIII., 141.  
 Argentina: The 1 cent. Stamp of 1888-91, by B. T. K. Smith, A.S.M.C., No. 382, p. 73.  
 Australia: An Appreciation, P.W., Dec., 1906.  
 Australia: Commonwealth Postage Stamp Printing from a Philatelic point of view. by "A True Federalist." A.P., XII., 77.  
 Australia: Federal Prospects, A.P., XII., 58, 72, 82, 93, 106, 118, 129, 142; XIII., 2, 18, 31.  
 Australia, Modern varieties of, P.J.G.B., XVI., 160.  
 Australia, Philatelic Research in, by Burton F. J. Cooper, L.P., XV., 23; by L. L. R. Hausburg, L.P., XV., 73.  
 Australia: Varieties of the Commonwealth Watermark, E.W.S.N., 1061.  
 Australian Colonies, Vagaries of the Postal Issues of, P.R., XXIII., 163.  
 Australian Penny Postage, S.C.F., XII., 126.  
 Austrian Newspaper Stamps: Why they are always mutilated (translated), P.R., XXVIII., 197.  
 Austria, Quantities issued (translated), E.W.S.N., 1061; P.R., XXVIII., 137.  
 Autobiography of a Stamp, by Wallaby, P.J.G.B., XVI., 223.  
 Barbados, Current Issues of, by A. D. Ferguson, L.P., XV., 252.  
 Barbados: The Tri-Centennial Stamp, P.R., XXVIII., 197, 242.  
 Belgium: The Head of Leopold I., on wove paper, imperforate, by Dr. Emilio Diena, P.R., XXVIII., 235.  
 Benadir, Surcharges of (translated) Am.J.P., XIX., 133.  
 Bermuda, The "Paid" Stamps of, S.C., X., 58, 70, 82.  
 Blank Album, Arranging Stamps in a, W.E.P., III, 156.  
 Bolivia, Fiscals, M.P.J., VII., 47.  
 Bondi, The Chevalier Augusto Cave ("Notable Philatelists") P.R., XXVIII., 200.  
 Bosnia, The Stamps of, by Major Evans, S.G.M.J., XVII, 23; by L. W. Fulcher, L.P., XV., 168; by F. Phillips, S.G.M.J., XVI., 205; by E. W. Wetherell, P.J.I., X., 256.  
 Boston Philatelic Society, A Short History of the, by C. A. Howes, M.W.S.N., XX., 235.  
 Brazil: Some Notes on the Emperor's Head Stamps, 1866-1881, by Percy C. Bishop, S.C.F., XII., 51, 68, 76.  
 Bremen, by R. R. Thiele, P.R., XXVIII., 11.  
 Bridson, Mrs. A. H. ("Well-known Philatelists"), P.J.G.B., XVI., 137.  
 British "Bar" Cancellations, by W. Kühn, S.C., X., 140, 160, 182.  
 British Guiana, The Bi-sected Stamps of, by E. A. V. Abraham; B.G.P.J., I., 7.

- British Guiana : The Story of the Circular 2 c. Rose, B.G.J.P., I., 10.  
 British Guiana : Return of Adhesive Stamps issued during 1905-06, E.W.S.N., 1209.  
 British Guiana, Stamps of, by A. W. Wheeler, Perf., XXIV., No. 10, p. 2.  
 British North Borneo : Notes regarding the 1886-87 issue, by Bertram W. H. Poole, S.G.M.J., XVII., 121.  
 British Philatelic Union, Wanted a, S.C., X., 59.  
 British Postal Stationery, by Major Evans, S.G.M.J., XVII., 106.  
 British Somaliland, Official Issues of, by Herbert W. Hawkins, S.C.F., XII., 159, 167.  
 British South Africa, by B. W. H. Poole, W.E.P., III., 153.  
 British South Africa, Heraldry of the Stamps of, by Major Evans, G.S.W., III., 184.  
 British South Africa, Varieties of, by Geo. L. Toppan, Am.J.P., XIX., 86.  
 Bulgaria, Latest Forgeries of, S.C.F., XII., 40.  
 Canada, Postage Due Stamps, M.P., XXIV., 132.  
 Canal Zone and Panama : Hints to Collectors, by F. E. Heydon, M.P., XXIV., 82, 114.  
 Canal Zone, Stamps of the, by Geo. L. Toppan, Am.J.P., XIX., 223, 261; by Dr. J. C. Perry, M.D., M.W.S.N., XX., 99, 183, 217, 208, 405.  
 Cant regarding Minor Varieties, P.J.G.B., XVI., 48.  
 Cape of Good Hope, Official Imitations of, Am.J.P., XIX., 334.  
 Carlisle Stamps of Spain, The, by L. W. Crouch, S.C.F., XII., 18, 24, 38.  
 Catalogue Problems, S.G.M.J., XVI., 150.  
 Catalogues, Simple and Complex, S.C., X., 159.  
 Ceylon, Fiscals, M.P.J., VII., 13, 21.  
 Ceylon : The "On Service" Stamps, E.W.S.N., 1113.  
 Chalky Paper Controversy, L.P., XV., 211; Am.J.P., XIX., 325; P.J.I., X., 260; M.P., XXIV., 162; S.C.F., XII., 151, 155; M.W.S.N., XX., 370, 416; E.W.S.N., pages 1185, 1189, 1193; W.E.P., II., 165; III., 1, 101.  
 China, Note on the Postage Stamps of, with descriptive Catalogue, by Juan Mencarini, S.G.M.J., XVII., 40, 78, 125; P.J.I., X., 154, 159.  
 China, Quantities issued, P.R., XXVIII., 198.  
 Chronological View of British Postal Issues, by C. F. Dendy Marshall, L.P., XV., 199, 216, 237, 259.  
 Cleaning Stamps (translated), by L. G. Dorpat, M.W.S.N., XX., 305.  
 Collections formed by Philatelic Societies : to whom do they belong? P.J.G.B., XVI., 197; S.C., X., 179; S.C.F., XII., 195.  
 Collector's Catalogue, The, by Harald Kjellstedt, M.W.S.N., XX., 313.  
 Colombian Republic and States, Stamps of the, by A. H. L. Giles, S.C.F., XI., 207, 215, 223, 232.  
 Colonial Reminders, The Sale of, L.P., XV., 78; E.W.S.N., p. 1089.  
 Colonial Stamp Chatter, by J. W. H. H., S.C.F., XII., 181.  
 Colour Chart Problem, The, M.W.S.N., XX., 436.  
 Colour Names, by B. W. Warhurst, S.G.M.J., XVI., 165; A.P., XII., 99.  
 Colours and Sunlight (reprinted), S.C., X., 154.  
 Commemorative Stamps, by R. MacColla (reprinted), S.C., X., 48.  
 Commemorative Stamps issued up to June, 1906 (translated), P.R., XXVIII., 220.  
 Commercial Side of Stamp Collecting, M.P., XXIV., 36.

- Concerning "C.A." Officials, by I. J. Bernstein, S.C.F., XII., 173.
- Concurrent Perforations: Should they be Catalogued? P.J.G.B., XVI., 216.
- Confederate States, Postage Stamps of, by Roy B. Bradley, M.W.S.N., XX., 247.
- Confederate States: The 10 cent, 1863, by C. E. Severn, M.W.S.N., XX., 399.
- Coote, C. H. ("Well-known Philatelists"), P.J.G.B., XVI., 153.
- Corrientes, The Story of the Stamps of, by B. W. H. Poole, W.E.P., III., 135.
- Counterfeits and Their Detection, by R. R. Thiele, P.W., February, 1906, and following issues.
- Countries of the World, The, by Edward J. Nankivell, G.S.W.; *all issues from January 6th to May 19th, and from June 23rd to December 29th, 1906; British Columbia to Costa Rica in alphabetical progression.*
- Courthope, Capt. G. L. ("Well-known Philatelists"), P.J.G.B., XVI., 21.
- Crawford, The Earl of, L.P., XV., 288.
- Crown "C.C." Paper, E.W.S.N., 1237.
- Cuba, The Varied Issues of (reprinted—"From an English Paper"), P.W., June, 1906.
- Deat's Collection of Proofs and Essays of U.S. Revenues, M.P.J., VII., 22; by Wyllard O. Wylie, M.W.S.N., XX., 19.
- Decimal Currency and Philately, S.C.F., XII., 153.
- De La Rue Notes (Multiple and Chalk-Surfaced Issues), P.J.I., X., 297.
- De La Rue Provisional Perforations, by C. S. F. Crofton, P.J.I., X., 12.
- Denmark and the Danish Colonies, Postal Issues of, by L. Hanciau, S.G.M.J., XVII., 29, 97.
- Denmark: The Danish Rail and Steamer Stamps, M.P.J., VII., 46, 54.
- Denmark (Historical), M.W.S.N., XX., 45.
- Die Varieties of the Nesbitt Series of United States Envelopes, by Victor M. Berthold, Am.J.P., XIX., 7, 35, 90, 126, 153.
- Disappearing Stamp, A, by C. Stuart Dudley, S.G.M.J., XVI., 145.
- Disposal of a Stamp Collection after the owner's death, S.C.F., XII., 113, 118, 126.
- Dominican Republic, Notes on the Postage Stamps of the, by Charles J. Phillips, S.G.M.J., XVII., 9, 35, 75, 94; by M. F. Bier, P.W., December, 1906.
- Durban Philatelic Exhibition, S.C.F., XII., 125, 139.
- Earliest Postage Stamp, The, by Geo. Richardson, jun., S.C.F., XII, 112; by Harry J. Maguire, S.C.F., XII., 183.
- Early Days of Philately, The, by B. T. K. Smith, A.S.M.C., No. 374, p. 11.
- Entires, Notes on ("On Postal Cards and Covers") S.C.F., XI., 203, 219; XII., 8, 31, 58, 71, 87, 111, 128, 149, 186.
- Entires, The Collecting of, by B. W. W., W.E.P., III., 24.
- Envelope Collecting, Attractiveness of, by C. F. Rothfuchs, M.W.S.N., XX., 469.
- Essays, A Collection of, by B. T. K. Smith, A.S.M.C., No. 375, p. 17.
- Evans, Major E.B. ("Who's Who?"), G.S.W., IV., 5.
- Evolution of the Postage Stamp, by Harry J. Maguire, S.C., X., 2, 60, 76, 92, 108, 124.

- Exchange Clubs, The Reform of, by Robert Reid, &c., S.C.F., XII., 157, 169, 192, 197.
- Exchange Clubs : "Sellers who do not Buy," S.C.F., XII., 32.
- Exchange Clubs : The Object of the Exchange System, A.P., XII., 81.
- Exchange Packets, Specialised, S.C.F., XII., 157, 169, 192, 197.
- Exhibitions and Medal Winners of the Past, P.J.G.B., XVI., 87.
- Exhibitions and Philately, S.G.M.J., XVI., 189.
- Express and Special Delivery Stamps, W.E.P., III., 122.
- Far East, Stamps of, by Harry J. Maguire, W.E.P., II., 171 ; by C. A. Howes, W.E.P., III., 38.
- Fifty Years of Philately : The History of Stanley Gibbons, Ltd., by Charles J. Phillips ; G.S.W., III., 3, 21, 36, 53, 67, 85, 99, 115, 132, 147, 163, 179, 198, 212, 228.
- Fiji Islands, Official Imitations of, Am.J.P., XIX., 336.
- Finland, the Postal Issues of, by L. Hanciau, S.G.M.J., XVI., 182, 209.
- Finland : The "Suomi" Label, by L. G. Dorpat, M.W.S.N., XX., 149.
- Fiscals, New Issues of, M.P.J., VII., 8, 15, 24, 31, 40, 48, 56, 63, 72, 80, 88, 96.
- Fiscal Stamps, Notes on, by A. B. Kay, S.C.F., XI., 211, 226 ; XII., 15, 34, 49, 79, 103, 127, 149, 172.
- Forecast of Prices, by an Expert, G.S.W., IV., 274, 291.
- Forgeries and Reprints : How to Detect them, by Rev. Robert B. Earé, G.S.W., III., 294, 311, 330, 354, 367, 378, 396 ; IV., 7, 24, 38, 54, 72, 88, 103, 118, 134, 151, 164, 183, 198, 215, 232, 246, 263, 280, 296, 310, 328, 343, 361, 376.
- Forgery of the Mexican 5c., 1899, described by H. W. Westcott, S.C.F., XII., 134.
- Forgeries, various, E.W.S.N., 1158 ; S.C.F., XII., 40.
- Forged Surcharges, W.E.P., III., 69.
- Forming and Mounting a Collection, by W. R. Elliott, M.A. ; B.G.P.J., I., 8.
- Fortunes in Stamps, by L. G. Dorpat, P.W., April, 1906.
- France : The French Fiscals and their Engravers, by R. R. Thiele, M.P.J., VII., 33.
- France : The Franchise Militaire Stamps, by Franz Reichenheim, L.P., XV., 20.
- France : Newspaper Stamps, by B. T. K. Smith, L.P., XV., 74.
- France : The new 10 c. Stamp, by Franz Reichenheim, G.S.W., III., 309 ; by L. G. Dorpat, M.W.S.N., XX., 265 ; translated articles, M.W.S.N., XX., 363, 387.
- France : Some Interesting Notes upon the 1 franc vermilion, by Jules Bouvéz, Am.J.P., XIX., 243.
- Gambia : The Provisional Surcharges, E.W.S.N., 1153, 1185.
- Geographical Interest of Stamp Collecting, Rev. T. C. Walton, M.A. ; G.S.W., III., 309, 327, 361.
- German Contract Stamps, by L. G. Dorpat, M.W.S.N., XX., 441.
- German Philatelic Convention at Nuremberg, The, S.C., X., 114.
- Germany : The Old German States, by Eugene Klein, M.W.S.N., XX., 215.
- Germany, The Private Locals of, by C. E. Severn, M.W.S.N., XX., 47.
- Germany, Railway Stamps of, M.P.J., VII., 14.
- Gibraltar and Morocco Agencies, The Adhesive Stamps of, by H. W. Westcott, S.C.F., XII., 47, 62, 70, 81.



- Gibraltar, English Stamps used in, by Edward Cooper, R.N., S.C.F., XII., 141.
- Gleanings from my Stamp Album, by Rev. T. C. Walton, M.A.; G.S.W., III., 27.
- Great Britain: "Appropriated" Impressed Duty Stamps, by L. W. Fulcher, M.P.J., VII., 62, 70, 86, 94.
- Great Britain: Archer's Perforation, P.R., XXVIII., 226.
- Great Britain: Army Official, Variety of the King's Head, 6d., by the Earl of Crawford, L.P., XV., 149.
- Great Britain: "Bar" Cancellations, by W. Kühn, S.C., X., 140, 160, 182.
- Great Britain: The "C.A." Stamp (translated), P.R., XXVIII., 196; S.C.F., XII., 133, 173.
- Great Britain: Cheque Dies, E.W.S.N., 1209, 1213, 1253.
- Great Britain: Chronological View of British Postal Issues, by C. F. Dendy Marshall, L.P., XV., 100, 216, 237, 259.
- Great Britain: Control Letters, E.W.S.N., 1089, 1121, 1161, 1165, 1185, 1217.
- Great Britain: Earliest Dates of use, E.W.S.N., 1169, 1173, 1177, 1185, 1197, 1209, 1217, 1225, 1237, 1253, 1257.
- Great Britain: The Embossed Adhesive Revenue Stamps, M.P.J., VII., 6, 15, 23, 38.
- Great Britain: Envelope Stamps and Dies, E.W.S.N., 1077, 1113, 1145, 1149, 1153, 1189, 1197, 1201, 1229, 1245, 1249.
- Great Britain: The Error of Plate 77, by S. T. Ellis, S.C.F., XII., 110.
- Great Britain: The Harry Furniss Caricature of the South Kensington Jubilee Envelope and Card, S.C.F., XII., 185.
- Great Britain: Hat Stamps, M.P.J., VII., 61.
- Great Britain: History of Railway Stamp Collecting; Special Supplement, E.W.S.N., No. 371.
- Great Britain: The Municipal Stamps of Northamptonshire, M.P.J., VII., 73.
- Great Britain: Newspaper Tax Stamps, by Walter Morley, M.P.J., VII., 12, 19, 28, 36, 44.
- Great Britain: Notes on the Stamps for Official Use, by I. J. Bernstein, P.R., XXVIII., 55, 70.
- Great Britain, Official Imitations, Am.J.P., XIX., 337.
- Great Britain: "Paid" Stamps, by Rev. P. E. Raynor, S.C., X., 14, 28, 44; by W. Kühn, S.C., X., 47, 128.
- Great Britain: Patent Medicine Stamps, M.P.J., VII., 65, 75, 81, 89.
- Great Britain: Plating the 1d black, E.W.S.N., 1229, 1245, 1257.
- Great Britain: Postal Stationery, by Major Evans, S.G.M.J., XVII., 106.
- Great Britain: Postmarks, E.W.S.N., 1205, 1213.
- Great Britain: Private Overprints, E.W.S.N., 1069, 1107.
- Great Britain: Proposed Compilation of a Catalogue of "Entires," L.P., XV., 256.
- Great Britain: The Proposed Divisible Stamp, S.C.F., XII., 156; S.G.M.J., XVII., 110.
- Great Britain: Railway Stamps, E.W.S.N., 1081, 1125, 1133, 1137, 1141, 1145, 1149, 1157, 1161, 1181, 1187, 1189, 1197, 1205, 1209, 1213, 1217, 1221, 1225, 1237, 1245, 1249, 1253.
- Great Britain, Railway Stamps, M.P.J., VII., 14, 30, 37, 46, 55, 63, 77.
- Great Britain: The Revenue Stamps which precipitated the American War of Independence, M.P., XXIV., 12.

- Great Britain : A Simplified Catalogue, by B. W. H. Poole, P.J.G.B., XVI, 198.
- Great Britain : Some Historic Essays and Postal Drawings, S.C.A., III., 82.
- Great Britain : Stamps used in Gibraltar, by Edward Cooper, R.N.; S.C.F., XII., 141.
- Great Britain : Varieties of, S.C.F., XII., 41.
- Great Britain : Varieties of the "Emblems" Watermark, E.W.S.N., 1233.
- Greece, the Stamps of the First Type, by T. W. Morris, S.C., X., 95, 116, 150, 167, 188.
- Guadeloupe, Official Imitations of, Am.J.P., XIX., 337.
- Guanacaste, Varieties of, by F. H. Napier, P.R., XXVIII., 178.
- Guatemala, Fiscals of, by Walter Morley, M.P.J., VII., 41, 49, 57.
- Guatemala, Sizes of Sheets, P.R., XXVIII., 91.
- Guernsey : the Law relating to Stamp Duties, M.P.J., VII., 6, 39, 47.
- Gummed, How American Stamps are (reprinted), S.C., X., 68.
- H.R.H. the Prince of Wales and the Royal Philatelic Society, L.P., XV., 287.
- H.R.H. the Prince of Wales and Mr. E. W. Wetherell's Collection, P.J.I., X., 33.
- Haas, Theodor ("Notable Philatelists"), P.R., XXVIII., 28.
- Hat Stamps, M.P.J., VII., 61.
- Hawaii, Official Imitations of, Am.J.P., XIX., 338.
- Hamburg, by R. R. Thiele, P.R., XXVIII., 154.
- Hanover, by R. R. Thiele, P.R., XXVIII., 13.
- Heraldry of British South Africa Stamps, by Major Evans, G.S.W., III., 185.
- Higgins, J. Steele, Junr. ("Notable Philatelists"), P.R., XXVIII., 146; ("Well-Known Philatelists"), P.J.G.B., XVI., 121.
- Historical Links, by Rev. T. C. Walton, M.A., G.S.W., III., 214, 231, 244, 260, 275, 291.
- History Told in Stamps (reprinted), M.W.S.N., XX., 311.
- Holland, the Adhesive Postage Stamps of, by C. Egbert Ashby, S.C.F., XII., 89, 94.
- Holland : Notes on the  $\frac{1}{2}$  cent, 1877, by Dr. R. F. Chance, P. R., XXVIII., 188.
- Holland : the Postage Due Stamps, by M. Z. Booleman, M.W.S.N., XX., 271.
- Horsley, M. H. ("Well-Known Philatelists"), P.J.G.B., XVI., 1.
- Iceland, the Stamps of, by Rev. W. N. Usher, L.P., XV., 54, 84.
- "Imperium," P. R., XXVIII., 46.
- India : Adhesive Revenue Stamps of Mysore, by E. W. Wetherell, P.J.I., X., 129, 170, 196, 229.
- India : Court Fee Stamps, P.J.I., X., 46.
- India : Stamps of the Small Cause Court of Calcutta and Madras, by C. S. F. Crofton, P.J.I., X., 68.
- India : Fiscals surcharged for Native States, by C. S. F. Crofton, P.J.I., X., 109.
- India : National Stamp Collection, S.C.F., XI., 234 ; P.J.I., X., 21.
- India : Notes on the Official Correspondence as to the Early Issues, by Major H. Vowell, L.P., XV., 197.
- India : Notes on the Postal Arrangements in some of the Native States, P.J.I., X., 218.

- India, Official Imitations of, Am.J.P., XIX., 366.
- India : Receipt Stamps, by C. S. F. Crofton, P.J.I., X., 305.
- India : the Overland Post in 1787, P.J.I., X., 288.
- India : Stamps of Scinde, P.J.I., X., 101, 122 ; A.S.M.C., No. 381, p. 65.
- India ; Stamps of Sirmoor, by Sir David Masson, P.J.I., X., 190, 247, 285.
- India : the Stamps of Some of the Native States, by Major Evans, S.G.M.J., XVI., 141, 164, 185, 264.
- India : Stewart-Wilson's "Surcharged Native States" (review), A.S.M.C., No. 373, p. 1.
- India : Varieties of Current Stamps, P.J.I., X., 23.
- Indian Native States Fiscals, by Walter Morley and Oswald Marsh, M.P.J., VII., 1, 9, 17, 25, 42.
- Indian Stamps in Gibbons' Catalogue, by B. Gordon Jones, P.J.I., X., 257.
- Individuality in Collecting, M.P., XXIV., 28.
- Inscriptions on Stamps, by L. G. Dorpat, P.W., Sept., 1906.
- International Reply Postage, coupons for (reprinted), E.W.S.N., 1125.
- International Stamps, S.C., X., 13 ; M.W.S.N., XX., 20, 117, 324.
- Inventor of the Postage Stamp, the, by Harry J. Maguire, G.S.W., IV., 405.
- Inverted Centres, W.E.P., III., 73.
- Inverted Watermarks, by Farthing Grey, S.C.F., XII., 182.
- Ionian Islands, Stamps of, by B. T. K. Smith, A.S.M.C., No. 380, p. 57 ; by C. E. Severn, M.W.S.N., XX., 449.
- Ireland's National Stamp Collection, by Harry J. Maguire, S.C., X., 105.
- Italian Philately, by M. P. Castle, L.P., XV., 227.
- Italy and the Italian Colonies, Stamps of, by L. Hanciau, S.G.M.J., XVII., 13, 54, 116.
- Italian Stamps, Notes on, by Charles J. Phillips, S.G.M.J., XVII., 32, 57.
- Jamaica, the Adhesive Postage Stamps of, by C. H. Greenwood, S.C.F., XII., 145.
- Jhalawar, Designs of, by C. A. Howes, Am.J.P., XIX., 3.
- Jihad, Designs of, C. A. Howes, Am.J.P., XIX., 3.
- Jonas, Maurice ("Well-Known Philatelists"), P.J.G.B., XVI., 97.
- Jones, T. Wickham ("Notable Philatelists"), P.R., XXVIII., 2.
- Joynt, W. R. Lane ("Well-Known Philatelists"), P.J.G.B., XVI., 73.
- Jubilee of the 5d New South Wales, S.C., X., 1, 5.
- Junior Philatelic Society in the Provinces, S.C.F., XII., 9.
- Kashmir, Official Imitations of, Am.J.P., XIX., 366.
- King's Head Stamps of the British Colonies : A Catalogue and Guide to Values, by Charles Nissen, S.C.A., III., 16.
- Kishangarh, Designs of, by C. A. Howes, Am.J.P., XIX., 4.
- Lagos, Latest Forgeries of, S.C.F., XII., 40.
- Lagos-Nigeria Puzzle, by J. W. H. H., S.C.F., XII., 134.
- Legrand, Dr. ("Well-known Philatelists"), P.J.G.B., XVI., 169.
- Leicester Philatelic Exhibition, P.J.G.B., XVI., 200.
- Life of Philately, the, by C. B. Purdom, S.C.F., XII., 26.
- Limitations of a Simplified Collection, G.S.W., IV., 178, 214, 258, 277, 292, 309, 323, 338, 357, 372, 389, 407.
- Lindenberg Medal, the, P.R., XXVIII., 22 ; S.G.M.J., XVI., 161.

- London Philatelic Exhibition, 1906, Accounts and Balance-Sheet, L.P., XV., 258; Special Report of Exhibition, by M. P. Castle, L.P., XVI., 101, 103; by Charles J. Phillips, S.G.M.J., XVI., 228; by Edward J. Nankivell, G.S.W., III., 321, 342, 357; by Percy C. Bishop, S.C.F., XII., 53, 65; by John N. Luff, M.W.S.N., XX., 231, 239; by Fred J. Melville, Am.J.P., XIX., 192; also special reports, unsigned, P.R., XXVIII., 93; P.J.G.B., XVI., 105.
- London Philatelic Exhibition, 1906, Comments, Complaints, and Criticisms, L.P., XV., 177, 195; P.R., XXVIII., 143; S.G.M.J., XVI., 217, 258; S.C.F., XII., 73, 80, 88, 97.
- London Philatelic Exhibition, 1906: Summary of Exhibits under heads of Countries, A.S.M.C., Nos. 378 and 379, pp. 47, 49.
- Long, Wm. A. R. Jex ("Notable Philatelists"), P.R., XXVIII., 181; ("Well-Known Philatelists"), P.J.G.B., XVI., 189.
- Luebeck, by R. R. Thiele, P.R., XXVIII., 12.
- Luxemburg, The First Stamps of, by B. T. K. Smith, A.S.M.C., No. 384, p. 85.
- Luxemburg, Reminders of, P.R., XXVIII., 257.
- Maldiv Islands; the Issue of Postage Stamps, E. W.S.N., pp. 1109, 1137; S.C.F., XII., 29.
- Mann Collection, the, S.G.M.J., XVI., 139, 160, 180, 204; L.P., XV., 37.
- Manuscript Provisionals, by Bertram W. H. Poole, P.J.G.B., XVI., 146.
- Marginal Plate Numbers, Control Numbers, Inscriptions, etc.; W.E.P., III., 7, 22, 36, 57.
- Mauritius, a Chat on its Stamps, by T. A. Pope, B.A.; B.G.P.J., I., 5.
- Mauritius, the Provisional of 1887, by B. W. H. Poole, W.E.P., III., 155.
- Mecklenburg-Strelitz, by R. R. Thiele, P.R., XXVIII., 32.
- Mecklenburg Schwerin, by R. R. Thiele, P.R., XXVIII., 31.
- Mexico, the Fiscal Stamps of, by F. A. Brown, P.W., Jan., 1906, and following numbers; also Special Supplements to M.P.J., Oct. and Nov., 1906.
- Mexico: Forgery of the 5c., of 1899; S.C.F., XII., 134.
- Microscopical Philately, M.P., XXIV., 60.
- Milan Philatelic Exhibition, 1906, Special Reports and Comments, P.R., XXVIII., 202; L.P., XV., 147, 215, 227; P.J.G.B., XVI., 178; S.C.F., XII., 135.
- Modena and its Postage Stamps, Historical Notes on, by Jules Bouvez, Am.J.P., XIX., 18.
- Monetary Systems in the Far East, by Harry J. Maguire, W.E.P., II., 191.
- Montenegro, Descriptive catalogue of, P.J.G.B., XVI., 49, 67.
- Montenegro, Jubilee Stamps of, M.W.S.N., XX., 409.
- Most valuable collection of Stamps ever sold, by Charles J. Phillips, S.G.M.J., XVI., 139, 160, 180, 204.
- Morocco's Postal System (reprinted), G.S.W., III., 264.
- Mottoes on Stamps, by Rev. T. C. Walton, M.A.; G.S.W., IV., 3, 36, 52, 86.
- Munn, W. W. ("Notable Philatelists"), P.R., XXVIII., 224.
- My Favourite Country (all in G.S.W., Vol. IV.):—Transvaal, by Edward J. Nankivell, 7; Egypt, by Cornelius Wrinkle, 132; Wadhwan, by Major Evans, 197; Interview with Mr. C. J. Phillips, 227; Siam, by Bertram W. H. Poole, 243.

- Mysore Fiscals, M.P.J., VII., 72.  
 Mysore : a History of the Adhesive Revenue Stamps, by E. W. Wetherell, P.J.I., X., 129, 170, 196, 229.  
 Nabha, Official Imitations of, Am.J.P., XIX., 368.  
 Natal : Variety of 3d on 1d, S.C.F., XII., 41.  
 Natal's First Philatelic Exhibition, S.C.F., XII., 125, 139.  
 National Stamp Collections, S.C.F., XI., 201, 220, 234 ; XII., 1, 61.  
 National Stamp Collection for India, P.J.I., X., 21.  
 Nepal, Designs of the Stamps of, by C. A. Howes, Am.J.P., XIX., 200.  
 Nevis, Note on, by C. S. F. Crofton, P.J.I., X., 64.  
 Nevis, the Postage Stamps of, by B. T. K. Smith, P.R., XXVIII., 4, 23.  
 New Brunswick, Stamps of, P.W., June, 1906.  
 New Brunswick : the "Connell" Stamp, by Frank J. Stillman, M.W.S.N., XX., 9.  
 Newfoundland, Stamps of, by L. G. Dorpat, M.W.S.N., XX., 167.  
 New Issues of Fiscal Stamps, M.P.J., VII., 8, 15, 24, 31, 40, 48, 56, 63, 72, 80, 88, 96.  
 New Issues of Postage Stamps : *All journals.*  
 New Issues of Telegraph Stamps, M.P.J., VII., 7, 15, 72.  
 New South Wales : the Diadem 3d., by A. F. Basset Hull, A.P., XIII., 17.  
 New South Wales, How to Arrange a Collection of, by E. W. Wetherell, P.J.I., X., 14.  
 New South Wales, Jubilee of the 5d green, S.C., X., 1, 5.  
 New South Wales : the Earliest Dated Sydney View, L.P., XV., 65.  
 New South Wales Perforations, A.P., XII., 69 ; by L. L. R. Hausburg, A.P., XII., 139.  
 New South Wales, Varieties of, E.W.S.N., 1117, 1177.  
 Newspaper Tax Stamps of Great Britain, the, by Walter Morley, M.P.J., VII., 12, 19, 28, 36, 44.  
 New Stamp Issues of 1905 (translated), S.C., X., 149.  
 New Zealand, Antagonism towards the Stamps of, A.P., XII., 136.  
 New Zealand, Dates of the Earlier Issues, L.P., XV., 176.  
 New Zealand, the Pictorial Stamps of, by W. B. Edwards, S.C.F., XI., 202, XII., 144, 187.  
 New Zealand, the Retouches of, by L. L. R. Hausburg, L.P., XV., 78.  
 New Zealand : Slot Machine Stamps, E.W.S.N., 1193.  
 Nicaragua, More anent, Am.J.P., XIX., 1.  
 Northamptonshire, Municipal Stamps of, M.P.J., VII., 73.  
 Norway from the Beginning (reprinted without acknowledgment), P.W., March to September, 1906.  
 Norway, Descriptive Catalogue of, P.J.G.B., XVI., 85.  
 Norway, Sale of Remainders of, P.R., XXVIII., 43.  
 Norway, the Stamps of, by Bertram W. H. Poole, W.E.P., II., 167, 1830.  
 Notable Philatelists (Biographies and Portraits), P.R., XXVIII., 2, 28, 48, 82, 130, 146, 164, 181, 200, 224, 244.  
 Notes upon Stamps and Their Varieties, by Geo. L. Toppan, Am.J.P., XIX., 13, 45, 80, 119, 167, 203, 251, 273, 310.

- Obituary: Col. R. C. H. Brock, S.G.M.J., XVII., 45; Rev. Dunbar Dunbar, L.P., XX., 11; Robert Ehrenbach, P.R., XXVIII., 177; G.S.W., III., 122; S.G.M.J., XVII., 21; L.P., XV., 196, 212; Frank J. Lefever, M.W.S.N., XX., 66; Dr. R. Garnett, L.P., XV., 92; Miss Hadlow; S.C.F., XI., 209; G.S.W., III., 79; S. C. Skipton, P.J.G.B., XVI., 66; S.C., X., 63; L.P., XV., 151; Dr. C. W. Viner, L.P., XV., 88; A.S.M.C., No. 376, p. 25; P.R., XXVIII., 47; S.C.F., XII., 33; P.J.G.B., XVI., 65; Sir Henry Thuillier, L.P., XV., 152.
- Odd-shaped Stamps, by Rev. T. C. Walton, M.A., G.S.W., III., 42.
- Official Imitations, by Freeman Putney, Junr., Am.J.P., XIX., 333-366.
- Oldenburg, by R. R. Thiele, P.R., XXVIII., 30.
- Old Time Memories, by L. Hanciau, S.G.M.J., XVII., 18, 60.
- On Nothing in Particular, especially Stamps, by W. E. Imeson, S.C.F., XII., 11.
- On Stamps and Their Varieties, by C. P. Rogers, S.C.F., XII., 7, 14, 23, 30, 43, 51.
- Orange Free State "Frauds," by H. Braun, S.C.F., XII., 164; by Leon de Raay, S.C.F., XII., 175.
- Original Covers, Observations on, by R. R. Thiele, P.W., April, 1906, etc.
- Our Review of Reviews, S.C.F., XI., 233; XII., 57, 99, 105, 161, 173, 191.
- Pacific Steam Navigation Company's Stamps, by C. E. Severn, M.W.S.N., XX., 369.
- "Paid" Handstamps and others, by B. W. W., S.C., X., 81.
- "Paid" Stamps of Great Britain, by Rev. P. E. Raynor, S.C., X., 14, 28, 44; by W. Kuhn, S.C., X., 47, 128.
- Panama and the Canal Zone: Hints to Collectors, by F. E. Heydon, M.P., XXIV., 82, 114.
- Panama: the Canal Zone Stamps, by Geo. L. Toppan, Am.J.P., XIX., 223, 261; by J. C. Perry, M.D., M.W.S.N., XX., 99, 183, 217, 288, 405; by Philip H. Ward, junr., Perf., XXV., No. 5, p. 2.
- Panama: the 1904 Issue, by F. E. Heydon, M.W.S.N., XX., 258.
- Panama: Registration Methods in the Canal Zone, M.P., XXIV., 107.
- Parcel Posts of the World, by E. Egly, S.C.F., XI., 227.
- Parliamentary Franking: a Privilege of the Past, by Harry J. Maguire, G.S.W., III., 362.
- Passer, Adolf ("Notable Philatelists"), P.R., XXVIII., 164.
- Patent Medicine Stamps, British, M.P.J., VII., 65, 75, 81, 89.
- Penny Postage Pamphlet, An Old, S.C.A., III., 39.
- Perfect Collection, The, P.R., XXVIII., 45.
- Perforations, Varieties of, P.R., XXVIII., 223; W.E.P., III., 117; M.W.S.N., XX., 434.
- Permits, The Collection of, by Chas. A. Nast, M.W.S.N., XX., 191.
- Persia, Designs of, by C. A. Howes, Am.J.P., XIX., 293, 328, 359.
- Peru, The Postcards of, M.W.S.N., XX., 30.
- Peru, the 5 soles yellow of 1881-82, M.P.J., VII., 18.
- Philatelic Chronology, P.R., XXVIII., 46.
- Philatelic Journey through Sweden, by Fred. J. Melville, G.S.W., IV., 262.
- Philatelic Library, The, by A. W. Wheeler, Perf., XXV., No. 2, p. 3; No. 3, p. 3.

- Philatelic Literature, A Short Survey of, by Herbert Clark, S.C., X., 180.
- Philatelic Play, Production of the First (Junior Philatelic Society), by Leslie G. Brown, S.C., X., 37.
- Philatelic Review of Reviews, P.J.G.B., XVI., 16, 37, 53, 69, 92, 118, 133, 149, 165, 184, 204, 226.
- Philatelic Terms, by Rev. Robert B. Earée, G.S.W., III., 277; by B. W. H. Poole, W.E.P., II., 169; III., 88, 137.
- Philatelic Terms in Swedish, S.C.F., XII., 147.
- Philatelists before the Footlights, S.C.F., XI., 230.
- Philatelist's Zoo, The, by B. W. H. Poole, G.S.W., IV., 293, 306, 326, 339, 359, 374, 390.
- Philately for the Nursery, by Fred. J. Melville, S.C.F., XII., 59.
- Philately's Highest Point, by B. W. W., S.C., X., 133.
- Philippine Cancellations, by Theodore Siddall, M.W.S.N., XX., 129.
- Philippine Islands, Notes on, by Theodore Siddall, M.W.S.N., XX., 253.
- Philippine Islands, the "O.B." Issues, by Theodore Siddall, M.W.S.N., XX., 269.
- Philippine Islands, Official Stamps, M.P., XXIV., 124.
- Philippine Islands, Postal Issues of the, by L. Hanciau, S.G.M.J., XVI., 136, 157.
- Philippine Islands, The Provisional Revenue Stamps of, by Oscar T. Hartman, P.W., October, 1906.
- Philippines: the Revolutionary Stamps, by Theodore Siddall, M.W.S.N., XX., 367; the "Aguinaldo" Stamps (Translated), S.C., X., 34.
- Philippine Islands, Varieties of, by Geo. L. Toppan, Am.J.P., XIX., 13.
- Pictorial Stamps, W.E.P., III., 85.
- Picture Stamp, The Cult of the (Reprinted), S.C.F., XII., 146, 162.
- Plate Numbers, etc., marginal, W.E.P., III., 7.
- Poland and its Stamps, by L. G. Dorpat, M.W.S.N., XX., 223.
- Poland, Stamps of, by H. T. K. Smith, A.S.M.C., No. 377, p. 33.
- Porto Rico Revenues, M.P.L., VII., 36.
- Portraits of Women on Stamps (Reprinted), M.W.S.N., XX., 219.
- Portraits on Stamps, by "Boswell Junior," G.S.W., III., 245, 261, 281, 293, 330, 367, 377; IV., 4, 24, 101, 161, 181, 244, 260, 278, 322, 342, 360, 375.
- Portugal: Notes on the Dies of the Postage Stamps of the Reigns of Dona Maria II. and Dom Pedro V., by R. B. Yardley, P.R., XXVIII., 50, 77, 125, 149, 170, 185, 208, 230, 246.
- Portugal: the St. Anthony Issue, M.W.S.N., XX., 54.
- Portugal, Stamps of, by Bertram T. K. Smith, P.R., XXVIII., 162.
- Portugal, Varieties of, by Geo. L. Toppan, Am.J.P., XIX., 45.
- Postal Cards and Covers, by a Specialist, S.C.F., XI., 203, 219; XII., 8, 31, 58, 71, 87, 111, 128, 149, 165, 186.
- Postal Congress at Rome, The, P.R., XXVIII., 136; M.W.S.N., XX., 111.
- Postal Issues of Sweden, The (Translated), Am.J.P., XIX., 76, 113, 161, 183, 247, 278, 305, 355.
- Postal Union Congress, The (reprinted), G.S.W., III., 317, 371.
- Postage Stamp Devices, by Rev. T. C. Walton, M.A., G.S.W., III., 58, 70, 87, 107, 120, 135, 151, 166, 182, 200.
- Postage Stamps for Charity, by Fred J. Melville (reprinted), S.C.F., XII., 169.

- Postmarked-to-Order *v.* "Cancelled" or Specimen Stamps, by E. D. E. Van Weenen, A.P., XII., 63.
- Post Office and the Stamp Trade, P.J.I., X., 25.
- Prince Edward Island, Stamps of, by A. P. Langworthy, S.C.A., III., 46.
- Prince Edward Island, Varieties of, by Geo. L. Toppan, Am.J.P., XIX., 80.
- Prussia, Varieties of, by Geo. L. Toppan, Am.J.P., XIX., 83.
- Queensland, Philately in, A.P., XII., 117.
- Queensland, Chatty Notes on the Stamps of, A.P., XIII., 47.
- Queensland, Identification of the re-touched 2d. of 1890-94, by W. Appleby, A.P., XIII., 8.
- Queensland, Varieties of, by Geo. L. Toppan, Am.J.P., XIX., 84.
- Railway Stamp Collecting, The History of: *Special Supplement to E.W.S.N., No. 371.*
- Railway Stamps, dealings in forbidden, S.C.F., XII., 147.
- Reform of Exchange Clubs, The, S.C.F., XII., 157, 169, 192, 197.
- Registered Letters in 1863, S.C., X., 106.
- Religious Designs, by Rev. T. C. Walton, M.A., G.S.W., III., 373.
- Reunion, Varieties of, by Geo. L. Toppan, Am.J.P., XIX., 85.
- Richter Collection, The, L.P., XV., 14.
- Roman States, Varieties of, by Geo. L. Toppan, Am.J.P., XIX., 87.
- Roulettes, unofficial, W.E.P., III., 19.
- Roumanian Charity Stamps (translated), P.R., XXVIII., 139.
- Roumania, Varieties of, by Geo. L. Toppan, Am.J.P., XIX., 88.
- Royal Philatelic Society: Report read at the Annual General Meeting, L.P., XV., 140; List of Members, 146; His Majesty and the Society, 277; History of the Society, etc., 278, *et. seq.*
- Royal Philatelic Society, The, P.R., XXVIII., 243.
- Royal Philatelic Society: Congratulations by an Old Member, G.S.W., IV., 409.
- Russia, Varieties of, by Geo. L. Toppan, Am.J.P., XIX., 119.
- St. Christopher, Postage Stamps of, by B. T. K. Smith, P.R., XXVIII., 167, 210; Varieties of, by Geo. L. Toppan, Am.J.P., XIX., 121.
- St. Helena, Stamps of, by a Specialist, S.C.A., III., 9.
- St. Helena, Varieties of, by Geo. L. Toppan, Am.J.P., XIX., 122.
- St. Lucia, Varieties of, by Geo. L. Toppan, Am.J.P., XIX., 123.
- St. Pierre Miquelon, Varieties of, by Geo. L. Toppan, Am.J.P., XIX., 124.
- St. Thomas and Prince Islands, Varieties of, by Geo. L. Toppan, Am.J.P., XIX., 167.
- St. Vincent, Varieties of, by Geo. L. Toppan, Am.J.P., XIX., 168.
- Salvador: the 1905-06 Provisionals, by John N. Luff, S.G.M.J., XVI., 269.
- Salvador, Varieties of, by Geo. L. Toppan, Am.J.P., 168.
- Samoa, Varieties of, by Geo. L. Toppan, Am.J.P., XIX., 203.
- San Domingo, The Stamps of, by M. F. Bier, P.W., Dec., 1906.
- Sarawak, by B. W. H. Poole, W.E.P., III., 90, 107, 139, 158.
- Sarawak, Perforations of, by B. W. H. Poole, P.J.G.B., XVI., 11.
- Sarawak, Varieties of, by Geo. L. Toppan, Am.J.P., XIX., 204.
- Sarawak: Who were the Engravers and Printers of the First Issue? G.S.W., IV., 70.
- Saxony, by R. R. Thiele, P.R., XXVIII., 156.

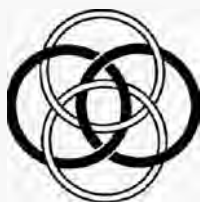


- Saxony, Varieties of, by Geo. L. Toppan, Am.J.P., XIX., 205.
- Schleswig-Holstein, by R. R. Thiele, P.R., XXVIII., 33.
- Schleswig-Holstein, Varieties of, by Geo. L. Toppan, Am.J.P., XIX., 206.
- Schroeder, Martin ("Notable Philatelists"), P.R., XXVIII., 130.
- Scientific Philatelic Collections, S.C., X., 43.
- Scientific Side of Philately, The, by B. W. Warhurst, P.R., XXVIII., 92.
- Scinde, Stamps of, P.J.I., X., 101, 122; by B. T. K. Smith, A.S.M.C., No. 381, p. 65.
- Scinde, Design of the Stamps of, by C. A. Howes, Am.J.P., XIX., 5.
- Senegal, Varieties of, by Geo. L. Toppan, Am.J.P., XIX., 206.
- Servia, Latest Forgeries of, S.C.F., XII., 40.
- Servia, The Stamps of, by Herbert R. Oldfield, S.G.M.J., XVI., 177, 198.
- Servia, Varieties of, by Geo. L. Toppan, Am.J.P., XIX., 207.
- Seychelles, Varieties of, by Chas. W. Harding, S.C.F., XII., 22, 36; by Geo. L. Toppan, Am.J.P., XIX., 207.
- Shanghai, Official Imitations of, Am.J.P., XIX., 335.
- Siam, Adhesive Postage Stamps of, by B. W. H. Poole, P.J.G.B., XVI., 12, 31, 83.
- Siam: its Posts and Postage Stamps, by Fred J. Melville, S.C.F., XI., 205, 213, 218, 231; XII., 3, 17.
- Siam, Varieties of, by Geo. L. Toppan, Am.J.P., XIX., 251.
- Sierra Leone, Varieties of, by Geo. L. Toppan, Am.J.P., XIX., 273.
- Simplification, An Unnecessary Outcry for, by W. Kühn, S.C., X., 194.
- Simplified Catalogue, A, W.E.P., III., 133; E.W.S.N., p. 1241; P.J.G.B., XVI., 177.
- Sirmoor, Stamps of, by Sir David Masson, P.J.I., X., 190, 247, 285.
- Sirmoor, Designs of, by C. A. Howes, Am.J.P., XIX., 40.
- Sirmoor, Official Imitations of, Am.J.P., XIX., 368.
- Societies' Collections and their Ownership, P.J.G.B., XVI., 197; S.C., X., 179; S.C.F., XII., 195.
- Somali Coast, Varieties of, by Geo. L. Toppan, Am.J.P., XIX., 273.
- Somaliland, British Official Issues of, by Herbert W. Hawkins, S.C.F., XII., 159, 167.
- Somaliland Protectorate, Stamps of the, by Bertram W. H. Poole, W.E.P., III., 3, 18, 34, 55, 70, 87, 103, 119.
- Somaliland Reminders, P.J.I., X., 50.
- Soruth, Official Imitations of, Am.J.P., XIX., 368.
- South Australia, A Priced Catalogue of the Stamps of, by Geo. Blockey, A.P., XII., 62, 95, 111, 134; XIII., 32.
- South Australia, Varieties of, E.W.S.N., 1154; by Geo. L. Toppan, Am.J.P., XIX., 275.
- South Bulgaria, Varieties of, by Geo. L. Toppan, Am.J.P., XIX., 276.
- Souvenirs, My, by Pierre Mahé, S.G.M.J., XVI., 162, 272; XVII., 42, 100.
- Spain: the Carlist Stamps, by L. W. Crouch, S.C.F., XII., 18, 24, 380.
- Spain, Minor Varieties, P.J.G.B., XVI., 90; by Geo. L. Toppan, Am.J.P., XIX., 276.
- Specialised Exchange Club Packets, S.C.F., XII., 158, 169, 192, 197.
- Speculative Stamps, Stray Remarks on, by Farthing Grey, S.C.F., XII., 55, 67.
- Stamford, Arthur H. ("Notable Philatelists"), P.R., XXVIII., 244.

- Stamp Collecting on the Stage. P.J.G.B., XVI., 33.
- Stamp Collecting *versus* Post Card Collecting, by Edwin C. Beal, Perf., XXV., No. 2, p. 2; by F. B. Wilson, No. 3, p. 2.
- Stamp Dealers and the Post Office, P.J.I., X., 25.
- Stamp Designs, Some, by C. A. Howes, Am.J.P., XIX., 3, 40, 147, 200, 293, 328, 359.
- Stamp Studies, by E. W. Wetherell, P.J.I., X., 2.
- Stamp Mania in 1863, The (reprinted), S.C., X., 122.
- Stamps made for Collectors, M.P., XXIV., 100.
- Stamps printed on creased paper, S.C.F., XI., 225.
- Stamps printed on both sides, W.E.P., II., 188.
- Standard Catalogue Wanted, S.C.F., XII., 200.
- Stanley Gibbons' Catalogue: a Colonial Review, A.P., XIII., 29.
- Stanley Gibbons' Catalogue: a Few Figures, by Burton F. J. Cooper, M.P.J., VII., 3.
- Story of the Watermark, by J. W. H. H., S.C.F., XII., 98.
- Straits Settlements, Varieties of, by Geo. L. Toppan, Am.J.P., XIX., 310.
- Stray Notes on Sheets of Stamps, by R. R. Thiele, P.W., January, 1906, and following issues.
- Stray Remarks on Speculative Stamps, by "Farthing Grey," S.C.F., XII., 55, 67.
- Stripping Stamps, A few Hints on, by F. S. Lloyd, G.S.W., III., 44, 60.
- Sudan: some Notes on the First Issue, W.E.P., III., 59.
- Suez Canal, The Stamps of, by L. G. Dorpat, P.W., April, 1906.
- Suomi ("Suomenmaa"), by L. G. Dorpat, M.W.S.N., XX., 149.
- Surcharged Stamps, by L. G. Dorpat, M.W.S.N., XX., 321.
- Surcharges, by Bertram W. H. Poole, G.S.W., IV., 229.
- Sweden: the Official 10 öre on 12 öre, perf. 14, by Hilmer Djurling, S.G.M.J., XVII., 120; by Harald Kjellstedt, M.W.S.N. XX., 433.
- Sweden, The Postal Issues of (translated), Am.J.P., XIX., 76, 113, 161, 183, 247, 278, 305, 355.
- Sweden: Wholesale Forgery of Swedish Stamps (translated), S.G.M.J. XVI., 144, 152.
- Swedish Philatelic Society's Jubilee. M.W.S.N., XX., 373.
- Swiss Cantons, Historical Notes on the Postage Stamps of the, by Jules Bouvéz, Am.J.P., XIX., 282, 298, 363.
- Teachers and Philately, by L. G. Quackenbush, P.W., December, 1906.
- Telegraphs, New Issues of, M.P.J., VII., 7, 15, 72.
- Telegraph Companies of Great Britain and their Stamps, by R. Halliday, S.C.A., III., 54.
- Tenpenny Shilling. The, by H. L. Dewhurst, S.C.F., XII., 153.
- Thier, Max ("Notable Philatelists"), P.R., XXVIII., 82.
- Tolima. Official Imitations of, Am.J.P., XIX., 336.
- Tonga, The Adhesive Stamps of, by Percy C. Bishop, S.C.A., III., 67.
- Transvaal: the C.S.A.R. Stamps, E.W.S.N., 1155.
- Transvaal: the 2s. 6d. Invert, by "Red Surcharge," S.C.F., XII., 177.
- Travancore. Designs of, by C. A. Howes, Am.J.P., XIX., 41.
- Tunis, the Designs of the Pictorial Stamps (translated), S.C., X., 102, 177.
- Type Varieties, Uncatalogued, by Dr. F. Lucas Benham, P.J.G.B., XVI., 7, 27, 62.
- Uncatalogued Varieties of Type, by Dr. F. Lucas Benham, P.J.G.B. XVI., 7, 27, 62.

- United States: American Issues in Three Periods (reprinted without acknowledgment), P.W., March, 1906.
- United States Envelopes (Nesbitt Series), Die Varieties of, by Victor M. Berthold, Am.J.P., XIX., 7, 35, 90, 126, 153.
- United States Envelopes, by Major Evans, S.G.M.J., XVII., 2.
- United States, Notes for Collectors of, by E. R. Aldrich, P.W., *all numbers*.
- United States: Early U.S. Envelopes, by J. M. Bartels, M.W.S.N., XX., 471; the Plimpton Dies, by J. M. Bartels, 477.
- United States: an Unchronicled Local, M.W.S.N., XX., 160.
- United States: Current 2c. Stamped Envelope, by H. A. Davis, M.W.S.N., XX., 174B.
- United States: San Francisco Earthquake Stamps, by Joe E. Franklin, M.W.S.N., XX., 187.
- United States: the 1 cent of 1881, by L. G. Dorpat, M.W.S.N., XX., 195.
- United States: the 2 c. Envelopes, 1903, by Louis G. Barrett, M.W.S.N., XX., 255, 264, 273.
- United States: Re-Issues, Reprints, and "Specimens," by Joseph A. Stehmetz, M.W.S.N., XX., 279.
- United States: A Rarity, by H. A. Davis, M.W.S.N., XX., 141.
- United States: "Sanitary Fair" Stamps, M.W.S.N., XX., 22.
- United States: Stamp Cancelling Dies, M.W.S.N., XX., 32.
- United States: The Local Posts, by C. E. Severn, M.W.S.N., XX., 117.
- United States: £2000 for an Annapolis Envelope, by Edward J. Nankivell, G.S.W., IV., 149.
- United States: the Rarest U.S.A. Postage Stamp, by Everett van Voorhis, M.W.S.N., XX., 2.
- United States: Medicine Stamps (reprinted), M.W.S.N., XX., 335.
- United States: Consular Stamps, M.W.S.N., XX., 305, 359.
- United States: Match and Medicine Stamps, by E. S. Phelps, M.W.S.N., XX., 385, 389, 390.
- United States: "My Favorite Country," by L. G. Dorpat, M.W.S.N., XX., 397.
- United States: Uncatalogued Provisional Revenues, by Chas. A. Nast, M.W.S.N., XX., 423.
- United States: Notes on U.S. Stamps and their Varieties, by Geo. L. Toppan, M.W.S.N., XX., 431, 472.
- United States. Official Imitations of, Am.J.P., XIX., 333.
- United States, Railway Stamps of, M.P.J., VII., 38.
- United States Revenue Stamps, The Deats Collection of, M.P.J., VII., 22.
- United States, Revenue Stamps, Special Supplements to M.P.J., January to October, 1906.
- United States Revenue Stamps, Notes on, by Chas. A. Nast, M.W.S.N., XX., 1, 64, 153, 159, 385, 423.
- Universal Postal Union, its History and Progress, by E. Egly, L.P., XV., 2.
- Unnecessary Outcry for Simplification, by W. Kühn, S.C., X., 194.
- Unofficial Roulettes, W.E.P., III., 19.
- "Unvalued" Stamps (reprinted without acknowledgment), P.W., Dec., 1906.
- Valentines, Philatelic, G.S.W., III., 104.
- Value of Stamps, a Calculation of the, by L. G. Dorpat, P.W., Sept., 1906.

- Varieties of Paper, by B. W. H. Poole, P.J.G.B., XVI., 161.  
 Varieties of Stamps, Notes upon, by Geo. L. Toppan, Am.J.P., XIX., 13,  
 45, 80, 119, 167, 203, 251, 273, 310.  
 Varieties of Surcharge, by Major Evans, S.G.M.J., XVII., 1.  
 Venezuela, Revolutionary Stamps of (translated), P.R., XXVIII., 42.  
 Venezuela, Varieties of, E.W.S.N., 1106.  
 Vicenz, Ernst ("Notable Philatelists"), P.R., XXVIII., 48.  
 Victoria, the Perforations of; a Dissertation for Advanced Collectors, by  
 J. H. Smyth; A.P., XIII., 23.  
 Victoria: Some Unknown Reprints, by Captain Ohrt, S.G.M.J., XVI.,  
 274.  
 Victoria, Stamps of. E. W. Wetherell, P.J.I., X., 10, 62, 83, 98, 152,  
 185, 217, 245, 271.  
 Victoria, Varieties of, E.W.S.N., 1106.  
 Walker, John ("Well-Known Philatelists"), P.J.G.B., XVI., 41.  
 Watermark, the Story of the, by J. W. H. II.; S.C.F., XII., 98.  
 Well-Known Philatelists (Biographies and Portraits), P.J.G.B., XVI., 1,  
 21, 41, 57, 73, 97, 121, 137, 153, 169, 189, 209.  
 West, Dr. R. Milbourne ("Well-Known Philatelists"), P.J.G.B., XVI.,  
 209.  
 What was the Earliest Postage Stamp? S.C.F., XII., 112, 183.  
 Who's Who: Major E. B. Evans, G.S.W., IV., 5.  
 Widdowson, T. B. ("Well-Known Philatelists"), P.J.G.B., XVI., 57.  
 Why and Wherefore of Various Stamps, by R. R. Thiele, P.R., XXVIII.,  
 11, 30, 154.  
 Women's Likenesses on Stamps (reprinted), M.W.S.N., XX., 219.  
 World's Philatelists, a Welcome to the, S.C.F., XII., 53.  
 Young Philatelist, The, S.C.F., XII., 145, 162.  
 Zanzibar, Varieties of the Provisionals of 1904, E.W.S.N., 1073.



## Philatelic Societies and Exchange Clubs.

### A DIRECTORY AND GUIDE.

*In the following list of Philatelic Societies every effort has been made to ensure ACCURACY OF DETAIL. The Editor of the "Annual" invites additions to the list for the next edition of the work, and also all necessary revisions and emendations of the particulars already provided.*

### British Societies.

THE ROYAL PHILATELIC SOCIETY, LONDON.—Meetings are held at 4 Southampton Row, W.C., on alternate Thursdays. The Secretary's address for all communications is 10 Gracechurch Street, London, E.C.

*Council for the Year 1906-7*.—President, H.R.H. The Prince of Wales, K.G., &c.; Vice-President, The Earl of Crawford, K.T.; Hon. Secretary, J. A. Tilleard; Hon. Treasurer, C. N. Biggs; Hon. Assistant Secretary, H. R. Oldfield; Hon. Librarian, L. W. Fulcher; Committee, E. D. Bacon, M. P. Castle, J.P. (Hon. Vice-Presidents), T. W. Hall, L. L. R. Hausburg, C. E. M'Naughtan, T. Maycock, F. Reichenheim, and R. B. Yardley.

It is proposed to incorporate the Royal Philatelic Society under the Companies Acts, but without the addition of the word "Limited." To do this it is necessary to secure the sanction of the Board of Trade, and, subject to this sanction, the following alterations are projected by the Council of the Society:—

*Titles of Members*.—The first three hundred and fifty members of the Society are to be called "Fellows," and to have the right to place the letters, F.R.P.S.L., after their names, subsequent elections to the title taking place, as vacancies occur, from among the ordinary members.

*Entrance Fee*.—The entrance for members to be reduced to £1 1s.

*Associates.*—Persons between the ages of sixteen and twenty-one are to be eligible for election as Associates without payment of entrance fee, and with an annual subscription of ten shillings and sixpence. These Associates are to have the right to attend ordinary meetings of the Society, and all the privileges of an ordinary member (including the receipt of the Society's journal), except the right of voting and of receiving such publications as are supplied either gratuitously or at reduced rates to ordinary members. The Associates are to have the right to become full members on attaining their majority.

*Election of Officers of the Society.*—Nominations for the candidature of any officer of the Society are, in future, to be given to the Secretary in writing on or before 20th May in each year.

**BIRMINGHAM PHILATELIC SOCIETY.**—Hon. President, Sir W. B. Avery, Bart.; President, R. Hollick; Vice-Presidents, T. W. Peck, W. Pimm; Committee, F. T. Collier, P. T. Deakin, H. Grindall, C. A. Stephenson; Hon. Secretary and Treasurer, G. Johnson, B.A., 308 Birchfield Road, Birmingham, at which address the Society's meetings are held.

**BRADFORD PHILATELIC SOCIETY.**—President, F. Gerhartz; Hon. Secretary, A. J. Foulger, 9 Beechwood Grove, Moorhead Lane, Shipley. Meetings are held on the first Thursday of the month.

**BRIGHTON PHILATELIC SOCIETY.**—President, M. P. Castle, J.P.; Hon. Secretary, Baron A. de Worms, 27 Adelaide Crescent, Brighton.

**BRISTOL AND CLIFTON PHILATELIC SOCIETY.**—President, Alderman Gardner, J.P.; Vice-President, R. Dalton; Committee, P. J. Lloyd, J. H. Reynolds, J. W. Stooke, D. H. M'Pherson, G. Harrington, and Dr. Evans; Hon. Secretary and Treasurer, H. Alsop, 25 Alma Road, Clifton, Bristol. Frequent meetings are held, generally at the residence of the Hon. Secretary.

**CITY OF LONDON PHILATELIC SOCIETY** (*late* ENTERPRISE PHILATELIC SOCIETY).—President, W. B. Edwards; Vice-Presidents, E. A. Klaber and J. R. Burton; Hon. Librarian, A. H. Harris; Hon. Counterfeit Detector, H. W. Westcott; Hon. Treasurer, W. H. Eastwood; Committee (in addition to Office-bearers), A. C. Constantinides, E. W. Butcher, and D. H. Jackson; Hon. Secretary, J. L. Eastwood, 169 Ferme Park Road, Crouch End, London, N.

**DUNDEE AND DISTRICT PHILATELIC SOCIETY.**—President, F. David; Hon. Secretary, G. H. Whitaker, 3 Eden Street, Dundee.

**FISCAL PHILATELIC SOCIETY.**—President, W. Schwabacher; Hon. Vice-Presidents, A. R. Bailliere, W. Corfield, C. S. F. Crofton, A. Hamilton, S. A. Klagsbrun, A. E. Lawrence, A. Schoeller, and A. P. Pearce; Vice-Presidents, W. Morley and E. H. Selway; Committee, B. F. J. Cooper, W. Hadlow, H. Kohler, O. Marsh, A. M. South, H. Thompson, and D. Thomson; Librarian, L. W. Fulcher, B.Sc.; Continental Secretary, G. Gilbert, 51 Rue Le Peletier, Paris; Secretary, Treasurer, and Exchange Superintendent, A. B. Kay, 2 Haarem Mansions, West Kensington, London, W.; American Exchange Superintendent, G. W. Pepper, Elmwood, Rhode Island, U.S.A. Meetings are held at 65 Bishopsgate Street Without, London, E.C.

**GLASGOW AND WEST OF SCOTLAND PHILATELIC SOCIETY.**—President, James J. F. X. King, F.E.S.; Vice-Presidents, John Brown, Robert M. Mann, and John Muir; Committee, Murray Graham, Thomas Kennedy, W. A. R. Jex-Long, E. Moser, A. W. Scott, Isidor J. Simons, George J. Taylor, James R. Riddoch; Hon. Treasurer, Thomas N. Wallace; Hon. Secretary, J. Douglas Oatts, 113 Douglas Street, Glasgow. Meetings are held at 562 Sauchiehall Street, Glasgow.

**HALIFAX PHILATELIC SOCIETY.**—Hon. Secretary, Lionel Dickinson, 3 Livingstone Street, Lee Mount, Halifax.

**HERNE BAY PHILATELIC SOCIETY.**—President, Mr. Maclachlan, J.P.; Hon. Secretary, T. F. Newton, 8 Promenade Central, Herne Bay.

**HERTS PHILATELIC SOCIETY.**—President, Franz Reichenheim; Vice-President, Harry L. Hayman; Hon. Vice-Presidents, Sir William Avery, Bart., M. P. Castle, J.P., Herbert R. Oldfield; Committee, A. Bagshawe, W. Archibald Boyes, Louis E. Bradbury, W. G. Cool, R. Frentzel, T. Hargrave Harvey, W. Simpson, W. T. Standen; Honorary Librarian, J. C. Sidebotham, 28 Great Ormond Street, London, W.C.; Honorary Secretary and Treasurer, H. A. Slade, 72 Westbourne Terrace, W. Headquarters for monthly meetings, 4 Southampton Row, London, W.C.

**HUDDERSFIELD PHILATELIC SOCIETY.**—Hon. Secretary, Charles H. Greenwood, 49 Perseverance Street, Primrose Hill, Huddersfield.

**HULL AND EAST RIDING PHILATELIC ASSOCIATION.**—President, Dr. R. M. Stokes; Vice-President, Dean Hall; Committee, R. Weber and R. W. Dewing; Hon. Librarian, H. Immercamp; Hon. Secretary and Treasurer, A. R. Hebblethwaite, 92 Park Grove, Hull.

**HULL PHILATELIC SOCIETY.**—President, Thos. Thompson; Hon. Secretary, Edward W. Drury, 29 Bond Street, Hull.

**INTERNATIONAL PHILATELIC UNION.**—President, H. R. Oldfield; Vice-Presidents, W. Schwabacher, L. W. Fulcher, W. Schwarte; Committee, P. P. Brown, W. J. Bovill, P. J. Dudgeon, W. Hadlow, J. E. Joselin, A. B. Kay, W. S. King, Major Laffan, R.E., Dr. Marx, M.A., O. Marsh, P. L. Pemberton, F. Reichenheim, J. C. Sidebotham; Hon. Exchange Superintendent, Dr. E. F. Marx, M.A.; Hon. Counterfeit Detector, W. Hadlow; Hon. Librarian, W. S. King; Hon. Secretary and Treasurer, T. H. Hinton, 26 Cromford Road, East Putney, London, S.W. Periodical Meetings are held at Essex Hall, Essex Street, Strand.

**IRISH PHILATELIC CLUB.**—President, Wm. R. Lane-Joynt, B.L.; Committee, Major Crookshank, Dr. Fredk. L. Flood, F. W. Meredith, J. Newcomen Mostyn, M.A., W. E. Peebles, B.L., T. A. Stodart, and Mrs. Armstrong Todd; Hon. Treasurer, Mrs. A. Betham; Hon. Secretary, Thos. H. Levinston, 3 Dawson Street, Dublin.

**JUNIOR PHILATELIC SOCIETY.**—President, Fred. J. Melville; Vice-Presidents, W. Darwen, B. W. H. Poole; Committee, P. Beaumont, G. B. Browne, D. Ellis, C. J. Patman, J. D. Ragg, A. J. Sefi, A. Selinger, and R. Shepherd; Exchange Superintendent, James Feeney; Superintendent of Beginners' Exchange, W. Darwen; Librarian, E. A. Smart; Counterfeit Detector, Charles Nissen; Secretary of Expert Committee, H. Lee; Curator of Permanent Collection of Stamps, R. Halliday; Hon. Auctioneer, E. M. Gilbert-Lodge, F.A.I.; Auditor, C. B. Purdom; Treasurer, H. F. Johnson; Assistant Secretaries, E. J. Homewood and L. J. Magnee; General Secretary, L. Savournin, 62 Long Lane, Aldersgate Street, E.C. The meetings of the Junior Philatelic Society are held fortnightly, on Saturday evenings, at Exeter Hall, Strand, London, W.C.

*Brighton Branch, J.P.S.*—Committee, Fred. J. Melville, Herbert Clark, Walter Mead, and John Ireland; Hon. Secretary, J. Corner Spokes, 22 Denmark Terrace, Brighton.



*Manchester Branch, J.P.S.*—President, I. J. Bernstein ; Vice-President, W. W. Munn ; Hon. Treasurer, J. S. Higgins, Junr. ; Hon. Librarian, G. Percy Seed ; Hon. Exchange Superintendent, Jos. Brooks ; Committee, F. W. Attack, Junr., Jas. Taylor, and Chas. Stiebel ; Hon. Secretary, J. R. M. Albrecht, 2 Seedly Terrace, Pendleton, Manchester. The meetings of the branch are held at the Y.M.C.A., Peter Street, Manchester.

**JUNIOR PHILATELIC SOCIETY OF SCOTLAND.**—President, Sir John Ure Primrose, Bart. ; Vice-Presidents, Robert M. Mann and J. Wilson Paterson ; Hon. Exchange Secretary, J. L. Thomas ; Committee, E. Barron, Dr. M. Calder, M. Campbell, J. R. Donaldson, P. Durand, J. M. Graham, H. Halley, A. Mackay, R. Mitchell, H. A. Wise ; Hon. Secretary and Treasurer, Robert Borland, Lochside, Milngavie, N.B. Meetings held at 562 Sauchiehall Street, Glasgow, on the first and third Wednesdays of each month, from September to April inclusive.

**KENT AND SUSSEX PHILATELIC SOCIETY.**—President, Edward J. Nankivell ; Hon. Secretary, Frederick Wicks, The Lodge, near Tudeley, Tonbridge, Kent.

**LEEDS PHILATELIC SOCIETY.**—President, W. Denison Roebuck, F.L.S. ; Senior Vice-President, H. Wade ; Junior Vice-President, W. V. Morten ; Hon. Treasurer, J. H. Thackrah ; Hon. Librarian, Fred. A. Padgett ; Exchange Manager, E. Egly ; Hon. Secretaries, Charles W. Harding, 139 Belle Vue Road, Leeds, and C. L. Pickard, 15 Woodhouse Lane, Leeds. The meetings of the Leeds Society are held on Tuesdays, at 7.30 p.m., at the Leeds Institute, Cookridge Street.

**LEICESTER PHILATELIC SOCIETY.**—President, Dr. R. Milbourne West ; Vice-Presidents, Dr. W. Mussen, Robert Walker ; Committee, Mrs. Scott, Messrs. Gadsby, Ellis, and Boulton ; Hon. Treasurer, Thomas B. Widdowson ; Hon. Secretary, P. V. Sansome, Tennyson Street, St. James' Road, Leicester.

**LIVERPOOL PHILATELIC SOCIETY.**—President, J. H. M. Savage ; Vice-Presidents, Herbert Woods and W. Gill ; Committee, Dr. Ackerley, W. F. H. Hill, J. Hughes, A. Phelps, and W. Rockliff ; Hon. Treasurer, J. Gordon ; Hon. Exchange Secretary, F. W. Calloway ; Hon. Secretary, Arthur S. Allender, 71 Canning Street, Liverpool. The meetings of the Society are held at the Hotel St. George, Lime Street, Liverpool.

LIVERPOOL JUNIOR PHILATELIC SOCIETY.—President, Dr. F. E. Ackerley; Committee, A. S. Allender, J. Bate, A. Phelps, and W. Rockliff; Hon. Exchange Secretary, H. S. Cave; Hon. Treasurer, P. A. Fletcher; Hon. Secretary, J. H. M. Savage, 56 Bebington Road, Higher Tranmore. The meetings are held at the Y.M.C.A., Mount Pleasant, Liverpool.

MANCHESTER PHILATELIC SOCIETY.—President, W. Dornig Beckton; Vice-Presidents, J. H. Abbot and W. Grunewald; Hon. Treasurer, C. H. Coote; Hon. Librarian, G. L. Campbell; Committee, G. B. Duerst, W. W. Munn, J. H. Taylor; Assistant Hon. Secretary and Comptroller, J. S. Gee; Hon. Secretary, G. Fred. H. Gibson, Fairfield, Crumpsall, Manchester. Meetings are held every Friday evening during the season, at the Grand Hotel, Manchester.

NORTH OF ENGLAND PHILATELIC SOCIETY.—President, Geo. B. Bainbridge, J.P.; Vice-President, T. D. Hume; Committee, Dr. Parkinson, W. J. Cochrane, Jas. Coltman, S. C. Graham, A. D. Oubridge, R. W. Wilkinson; Hon. Secretary and Treasurer, Mark Euston, 43 Sidney Grove, Newcastle-on-Tyne. Meetings are held on the first Thursday in each month, October to April, at the Y.M.C.A., Newcastle-on-Tyne.

PLYMOUTH PHILATELIC SOCIETY.—President, Major G. H. Stockdale, R.E.; Hon. Secretary, Charles H. Dymond, 5 Cotehele Terrace, Stoke, Devonport.

POSTMARK SOCIETY.—For collectors and students of post-marks. Hon. Secretary, Thomas Whitworth, Waterloo Liverpool.

SCOTTISH PHILATELIC SOCIETY.—President, John Walker; Vice-President, Andrew Henderson; Committee, William Morrison, James Pursell, R. Jamieson Torrie, J. M. Weir, and the Hon. President, Vice-President, and Secretary *ex officio*; Hon. Secretary and Treasurer, R. W. Findlater, 30 Buckingham Terrace, Edinburgh.

*Junior Branch.*—President, John Walker; Vice-President, Alexander James; Committee, J. Penman Mackenzie, H. B. M'Gill, Ernest Humphries, and J. Arnott Hamilton; Hon. Secretary and Treasurer, Frank Chalmers, 24 Bruntsfield Gardens, Edinburgh. The meetings of the Junior Section are held on the first Saturday of the month, at Dowell's Rooms, 18 George Street, Edinburgh.

SHEFFIELD PHILATELIC SOCIETY.—President, Frank Atkin ; Vice-President, W. G. Laycock ; Secretary, H. E. Stanfield ; Treasurer, J. H. Chapman ; Librarian, J. F. Peace ; Exchange Secretary, R. Sneath ; Committee, J. E. Bartlett, G. H. Hunt, and A. T. Nixon. Meetings held at the King's Head Hotel, Sheffield.

SOUTH WALES AND MONMOUTHSHIRE PHILATELIC SOCIETY.—Chairman, E. P. Crowther ; Hon. Secretary, H. Perkins, 4 Plasturton Gardens, Cardiff ; Secretary of Junior Section, Percy J. Norman, 52 Hamilton Street, Cardiff.

STAMP EXCHANGE PROTECTION SOCIETY.—President, Rev. G. H. Raynor, M.A. ; Hon. Secretary and Treasurer, F. A. Wickhart, 30 Highbury New Park, London, N.

STAMP TRADE PROTECTION ASSOCIATION.—Secretary, J. S. G. Telfer, 63-64 Chancery Lane, London, W.C.

## British Exchange Clubs.

ASSOCIATED BANKS STAMP EXCHANGE.—Hon. Secretary, Herbert Ford, Staveleigh, Devonshire Road, Handsworth Wood, Staffs.

BEGINNERS' STAMP EXCHANGE CLUB.—Secretary, Miss Florence E. Smith, Winfrith, The Crescent, Bradford.

BLACKPOOL STAMP EXCHANGE.—Secretary, W. Warburton, 14 Bolton Street. Ramsbottom.

BLACKHEATH STAMP EXCHANGE CLUB.—Hon. Secretary and Treasurer, F. C. Henderson, Eton Grove, Lewisham, S.E.

BRITISH AND COLONIAL STAMP CLUB.—Secretary, Miss Haynes, 119 Clarendon Road, Holland Park, London, W.

BRITISH EMPIRE STAMP EXCHANGE CLUB.—Secretary, H. Bean, 164 Loughborough Park, London, S.W.

BRITISH PHILATELIC INSTITUTE.—Secretary, G. Loverius, 141 Curtain Road, London, E.

CALEDONIA STAMP EXCHANGE CLUB.—Secretary, John Johnson, Moss-Side, New Deer, Aberdeenshire.

CHELSEA "ENTIRES" EXCHANGE.—Manager, B. W. Warhurst, 15 Paultons Square, Chelsea, S.W.

CITY BANKS' STAMP EXCHANGE CLUB.—Hon. Secretary, C. H. Moulds, 67 Pembroke Road, Ilford, Essex.

CITY STAMP EXCHANGE CLUB.—Secretary, S. F. Bickers, 7 Richmond Terrace, Cork.

CLARENDON STAMP EXCHANGE CLUB.—Secretary, F. J. Rolt, 1 Salisbury Road, Wimbledon, S.W.

CLIFTON STAMP EXCHANGE CLUB.—Secretary, J. H. Reynolds, 17 Cranbrook Road, Redland, Bristol.

COLLECTORS' STAMP EXCHANGE CLUB.—Secretary and Founder, Nelson T. Hillier, Hayman's Hill, Horsmonden.

CONCORDIA STAMP EXCHANGE.—Secretary, Rev. L. Graham, B.A., LL.B., Kirton Rectory, Ollerton, Notts.

COUNTY OF STAFFORD PHILATELIC EXCHANGE.—Hon. Secretary, T. B. Widdowson, 16 Stretton Road, Leicester.

DERBYSHIRE STAMP EXCHANGE.—Secretary, Hugh Harrop, 17 Wesley Street, Hadfield, near Manchester.

EASTERN COUNTIES' STAMP EXCHANGE SOCIETY.—Secretary, J. Johnston, Moss-Side, New Deer, Aberdeenshire.

ENGLISH STAMP EXCHANGE SOCIETY.—Secretary, Victor H. Gregory, 2 Burlington Gardens, Chiswick, London, W.

EXCELSIOR STAMP EXCHANGE.—Secretary, M. Heslop, Windmill House, Stocking Pelham, Buntingford, Herts.

FEDERAL STAMP EXCHANGE SOCIETY.—Secretary, J. C. Long, 7 Salcott Road, Wandsworth, London, S.W.

FISCAL STAMP EXCHANGE CLUB.—Hon. Secretary, A. B. Kay, 2 Haarlam Mansions, West Kensington, London, W.

FORTH STAMP EXCHANGE CLUB.—Secretary, J. Mullo Weir, 80 Hanover Street, Edinburgh.

GENERAL COLLECTORS' EXCHANGE CLUB.—Secretary, B. A. Meadows, 21 North Street, Wellingborough.

GREATER BRITAIN STAMP EXCHANGE.—Secretary, W. S. Webb, Walpole, Halesworth.

HAMPSHIRE STAMP EXCHANGE.—Secretary, Arthur Toole, North Road, Southampton.

IMPERIAL STAMP EXCHANGE SOCIETY.—Secretary, F. B. Smith, 29 Havelock Road, South Wimbledon, Surrey.

KILDARE STAMP EXCHANGE CLUB.—Secretary, Capt. F. F. Freeman, Calverstown House, Kilcullen, Co. Kildare.

LADIES' STAMP EXCHANGE.—Secretary, Miss L. Haynes, 119 Clarendon Road, Holland Park, London, W.

LANCASTRIAN STAMP EXCHANGE.—Secretary, W. Warburton, 14 Bolton Street, Ramsbottom.

LEICESTER STAMP EXCHANGE.—Secretary, P. Sansome, Tennyson Street, Leicester.

LINCOLN STAMP EXCHANGE.—Secretary, J. M. Morton, 54 St. Mary's Road, Peckham, London.

MANCHESTER CITY STAMP EXCHANGE.—Secretary, Edwin P. Ainsworth, 537 Stockport Road, Manchester.

NORTHERN STAMP EXCHANGE SOCIETY.—Secretary, F. A. Wickhart, 30 Highbury New Park, London, N.

NORTHAMPTONSHIRE STAMP EXCHANGE.—Secretary, Miss G. Butlin, 13 Euston Place, Leamington.

ONE AND ALL STAMP EXCHANGE SOCIETY.—Secretary, J. G. J. Stevens, Stanley House, Redruth.

OTTERDALE STAMP EXCHANGE CLUB.—Secretary, G. Herbert Dannatt, Lyndale, Blackheath, S.E.

OXFORD STAMP EXCHANGE.—Secretary, Rev. H. Cummings, Littlemore, Oxford.

PALACE PHILATELIC EXCHANGE SOCIETY.—Secretary, C. A. Squire Cox, 3 Seymour Terrace, Anerley, S.E.

PALATINE STAMP EXCHANGE.—Hon. Secretary, Percy Dunbar, Oakdene, Burton-on-Trent.

PERTSHIRE STAMP EXCHANGE CLUB.—Secretary, Miss Culbard, Lag Beag, Dunkeld, N.B.

PHILATELIC EXCHANGE CLUB.—Secretary, F. Phillips, 29 Dalby Street, Prince of Wales' Road, London, N.W.

PRIMROSE STAMP EXCHANGE SOCIETY.—Secretary, C. H. Greenwood, 49 Perseverance Street, Primrose Hill, Huddersfield.

PUBLIC SCHOOLS' STAMP EXCHANGE SOCIETY.—General Secretary, Mrs. Rowsell, 11 Alexandra Road, Bedford.

RECRUIT STAMP EXCHANGE CLUB.—Hon. Secretary, Major Pym, The Turrets, Walmer, Kent.

ROYAL COUNTIES' PHILATELIC EXCHANGE SOCIETY.—Secretary, F. W. Tapper, 63 Waverley Road, Reading.

MR. SEMPLE'S STAMP EXCHANGE SOCIETY.—Hon. Secretary, Guy Semple, 49 Wester Road, Putney, S.W.

SOLENT STAMP EXCHANGE SOCIETY.—Secretary, E. G. Hazelwood, 48 Clovelly Road, Southampton.

SOUTH OF ENGLAND STAMP EXCHANGE.—Secretary, Miss Florence E. Smith, Winfrith, The Crescent, Bedford.

**SOUTH LONDON STAMP EXCHANGE CLUB.**—Secretary, Miss Florence E. Smith, Winfrith, The Crescent, Bedford.

**"STAMPS" EXCHANGE SOCIETY.**—Hon. Secretary, Thos. B. Widdowson, Lincoln Street, Leicester.

**SUBURBAN STAMP EXCHANGE CLUB.**—Secretary, H. A. Slade, 72 Westbourne Terrace, London, W.

**TRAVELLERS' STAMP EXCHANGE.**—Secretary, Leicester A. B. Paine, Longsdon, near Stoke-on-Trent.

**"UNUSED" EXCHANGE CLUB.**—Secretary, B. A. Meadows, 21 North Street, Wellingborough.

**WEST RIDING STAMP EXCHANGE CLUB.**—Secretary, Abraham Grace, Cloth Hall, Wakefield.

**WOODFORD STAMP EXCHANGE CLUB.**—Secretary, F. Peake Sexton, Park Lodge, Fairfield West, Kingston-on-Thames.

## British Colonial Societies.

### Australia.

**BRISBANE PHILATELIC SOCIETY.**—President, Dr. Lucas; Hon. Secretary, R. Conochie, Junr., Brisbane, Queensland.

**PHILATELIC SOCIETY OF SOUTH AUSTRALIA.**—President, Dr. Benham; Hon. Secretary, J. H. Welfare, Pirie Street, Adelaide.

**PHILATELIC SOCIETY OF VICTORIA.**—President, F. A. Jackson; Secretary, Treasurer, and Exchange Superintendent, W. Brettschneider, 128 Russell Street, Melbourne. There is a Junior Branch, of which Messrs. H. B. Jackson, W. Robertson, and W. Husband are the Managing Committee.

**SYDNEY PHILATELIC CLUB.**—President, A. F. Basset Hull; Hon. Secretary, A. H. Pettifer; Acting Hon. Secretary, J. J. Witney, Box 704, G.P.O., Sydney, N.S.W.

**TASMANIAN PHILATELIC SOCIETY.**—President, Captain Rich; Hon. Secretary, M. H. M'Arthur, Castray Esplanade, Hobart, Tasmania.

**UNION STAMP COLLECTING CLUB (for Juniors).**—President, G. H. Anderson; Club Rooms, 316 Elizabeth Street South, Sydney, N.S.W.

**British Guiana.**

BRITISH GUIANA PHILATELIC SOCIETY.—President, Hon. B. Howell Jones; Hon. Secretary and Treasurer, A. D. Ferguson, Georgetown, British Guiana.

BRITISH GUIANA JUNIOR PHILATELIC CLUB.—Acting Secretary, P. Watson; Club Address, P.O. Box 99, Georgetown, British Guiana.

**Canada.**

CANADIAN PHILATELIC SOCIETY.—President, O. W. Barwick; Secretary and Treasurer, F. B. Archer, 995 St. Urban Street, Montreal, Canada.

**India.**

PHILATELIC SOCIETY OF INDIA.—Hon. President, C. Stewart-Wilson, I.C.S.; President, Sir David Masson; Hon. Secretary, Wilmot Corfield, 25 Mangol Lane, Calcutta.

**Natal.**

DURBAN AND DISTRICT PHILATELIC SOCIETY.—President, J. Wallace Bradley; Vice-President, T. J. Miljoen; Hon. Secretary, W. Percy Williams, 93 Club Arcade, Durban.

**New Zealand.**

PHILATELIC SOCIETY OF NEW ZEALAND.—Patron, Lord Plunket; President, the Hon. the Postmaster-General; Hon. Secretary and Treasurer, L. A. Sanderson, Wellington, New Zealand.

**Transvaal.**

PHILATELIC SOCIETY OF JOHANNESBURG.—Hon. Secretary, J. Glasser, P.O. Box 4967, Johannesburg, S.A.

TRANSVAAL PHILATELIC SOCIETY.—President, T. Henderson, M.A.; Hon. Secretary, H. V. Fowler, Box 2404, Johannesburg.

**American Societies.**

AMERICAN PHILATELIC ASSOCIATION.—President, Wm. C. Stone; Secretary, A. F. Henkels, 1417 No. Bouvier, Philadelphia, Pa., U.S.A.

BOSTON PHILATELIC SOCIETY.—President, C. A. Howes; Vice-President, Wyllard O. Wylie; Secretary, E. de Z. Kelley, 83 Summer Street, Boston, Mass., U.S.A.

COLLECTORS' CLUB, NEW YORK.—President, John N. Luff; Secretary and Treasurer, John A. Klemann; Club Rooms, 106 East 23rd Street, New York City.

DENVER STAMP CLUB.—President, Chas. A. Nast; Secretary, H. A. Davis, Denver, Colorado, U.S.A.

INDIANA STATE PHILATELIC SOCIETY.—President, Wm. E. Ault; Secretary, Benjamin F. Egan, 427 Abbott Street, Indianapolis, U.S.A.

INTERSTATE PHILATELIC ASSOCIATION.—President, H. C. Griesel; Secretary, Edwin Caswell, 191 Overton Street, Portland, Or., U.S.A.

JUNIOR STAMP CLUB OF DENVER, COLORADO.—President, C. M. Snyder; Secretary, H. E. Munger, 2502 West 32nd Avenue, Denver, Colo., U.S.A.

KANSAS CITY STAMP CLUB.—President, Paul Luther; Secretary, A. L. Nelson, 1823 West Prospect Place, Kansas City, Mo., U.S.A.

METROPOLITAN FISCAL ASSOCIATION.—President, Chas. A. Nast; Secretary, Wm. C. Polk, 91 Lester Street, Providence, R.I., U.S.A.

METROPOLITAN PHILATELIC ASSOCIATION.—President, Rev. H. Wendt; Secretary and Treasurer, F. A. Mueller, Peake, Neb., U.S.A.

NATIONAL PHILATELIC ASSOCIATION OF LETTER CARRIERS.—President, Edward P. Hennessy; Secretary, Frank B. Eldredge, 17 Jefferson Street, Attleboro', Mass., U.S.A.

NATIONAL STAMP COMMITTEE.—President, C. F. Rothfuchs; Secretary, Wyllard O. Wylie, Room 508, Kast Building, Boston, Mass., U.S.A.

NEBRASKA PHILATELIC SOCIETY.—President, E. H. Wilkinson; Secretary and Treasurer, L. T. Brodstone, Superior, Neb., U.S.A.

NEW ENGLAND PHILATELIC ASSOCIATION.—President, H. Wesley Legg; Secretary and Treasurer, Alex. P. Brown, 28 School Street, Boston, Mass., U.S.A.

NEW YORK STAMP SOCIETY.—President, Dr. H. B. F. Heath; Secretary, Eugene Klein, care of Arkin & Co., 104 Lenox Avenue, New York City.

POSTAL CARD SOCIETY OF AMERICA.—President, S. Schachne; Secretary, S. M. Edwards, Argusville, North Dakota, U.S.A.



PRE-CANCELLED STAMP CLUB.—President, Clarence H. Eagle; Secretary and Treasurer, F. L. Smith, 40 Exchange Place, New York City.

RHODE ISLAND PHILATELIC SOCIETY.—President, A. R. Perry; Secretary and Treasurer, W. Irving Cox, 181 Friendship Street, Providence, R.I., U.S.A.

PHILADELPHIA PHILATELIC SOCIETY.—

ST. LOUIS STAMP COLLECTORS' SOCIETY.—President, H. A. Diamant; Secretary, Chester Myers, 300 South 3rd Street, St. Louis, Mo., U.S.A.

SOUTHERN PHILATELIC SOCIETY.—President, Chas. Roemer; Secretary and Treasurer, W. P. Kelly, Kansas City, Mo., U.S.A.

STAMP COLLECTORS' PROTECTIVE ASSOCIATION OF AMERICA.—President, E. Chandlee; Secretary and Treasurer, L. Brodstone, Superior, Neb., U.S.A.

TWIN CITY PHILATELIC SOCIETY.—President, E. Doebelin; Secretary, W. G. Kirchenbower, 6750 Simon Avenue, Pittsburg, Pa., U.S.A.

UNITED STATES REVENUE SOCIETY (OR UNITED STATES REVENUE STAMP COLLECTORS' ASSOCIATION, as the Committee may decide).—Secretary, Dr. Holland A. Davis, 1622 Welton Street, Denver, Colorado, U.S.A.



# Messrs. PUTTICK & SIMPSON,

Literary, Fine Art, and  
PHILATELIC AUCTIONEERS,

47 Leicester Square, London, W.C.

MAKE THE SALE OF

## *Rare Postage Stamps*

A SPECIALITY.

### DATES OF SALES FOR 1907.

January 15 and 16, 29 and 30; February 12 and 13, 26 and 27; March 12 and 13, 26 and 27; April 9 and 10, 23 and 24; May 7 and 8; June 4 and 5; September 24 and 25; October 8 and 9, 22 and 23; November 5 and 6, 19 and 20; December 3 and 4, 17 and 18.

**O**WING to the very large number of commissions received from the Continent and America, the Catalogues are issued, when possible, one month or more before the date of sale. Owners wishing to include Stamps should therefore forward them as early as possible.

Messrs. PUTTICK & SIMPSON'S Sales are attended by the majority of the leading Collectors and Dealers, and are the best medium for disposing of COLLECTIONS AND SINGLE RARITIES, many record prices for fine Stamps having been obtained during past seasons.

The greatest care is taken in preparing the Catalogues, in order that Country and Foreign Buyers who send bids may rely upon the condition, &c., of the various lots being accurately described.

**LIBERAL ADVANCES MADE PENDING REALIZATION IF DESIRED.**

FOR TERMS AND FULL PARTICULARS, ADDRESS

**Messrs. Puttick & Simpson,**  
**47 LEICESTER SQUARE, LONDON, W.C.**

*Established 1794.*

*Telephone 1561 Gerrard*

The SEVENTH (1907) EDITION of the

# Universal Standard Catalogue

.... OF THE ....

## Postage Stamps of the World.

Fully Illustrated, and handsomely bound in covers of a new design. All Postage Stamps, Officials, Postage Dues, etc., known to be issued to December, 1906, are fully described and priced, but perforation measurements and minor varieties are rigorously excluded.

This publication fulfils all the requirements of Collectors needing a

### Simplified Catalogue.

It is the neatest, cheapest, and latest Catalogue published. Easiest to follow. The only one suitable for the General Collector.

**Price 1/6, post free anywhere.**

... THE ...

## "Standard" Postage Stamp Albums.

ALL THE WORLD IN ONE VOLUME.

Or in Two Separate Volumes for British Empire and Foreign Countries. A separate space for every stamp, numbered to correspond with our catalogue.

... THE ...

## "Paragon" Postage Stamp Albums.

With interchangeable quadrilled linen-hinged leaves. Covers on a new and simple principle which must be seen to be appreciated.

**Prices from 10/- to 21/6.**

Full description of all our Albums will be found at the end of our Catalogue, or as a separate Illustrated Booklet, which may be had Free for the asking.

---

---

**WHITFIELD KING & CO.,**  
**IPSWICH.**

JUST READY.

7th EDITION.

## KOHL CATALOGUE, 1907.

Of the Postage Stamps of the World. Many Thousand Engravings.  
The best known Handbook in the World. Price 6/9, post free.

**Very Good Large Stock of Stamps.** including First-Class Rarities.

Please **send your Want Lists**, which will promptly and carefully be filled. Very reasonable prices.

**PAUL KOHL**  
CHEMNITZ (Saxony).

## COMMISSIONS EXECUTED at all STAMP AUCTIONS

Terms:—1/6 per Lot, including careful examination and valuation of Lots.

SINGLE AND MIXED LOTS examined and accurately described prior to Sales. Terms, 6d. per Lot.

*SPECIAL TERMS FOR LARGE MIXED LOTS AND COLLECTIONS.*

## GEORGE LOVERIUS,

Philatelic Commission Agent, 37 OAKLEY SQUARE, LONDON, N.W.

## Important to Philatelists.

### THE REFERENCE REGISTER OF RELIABLE COLLECTORS AND EXCHANGE CLUBS

Contains nearly 700 names and addresses of Collectors and Particulars of numerous Societies and Clubs. Subscription—One Shilling and Two Trustworthy References. Also state briefly what you collect.

YOU will find it advantageous to join an Exchange, and to know with whom you may safely correspond in Great Britain and Colonies, and for others to know you. The circulation is private; only Subscribers have a copy.

Compiler of Register—H. BEAN, 164 Loughborough Park,  
London, S.W.

## GREAT BRITAIN.

Specialists' Want Lists promptly filled.

. . . British Stamps used Abroad, &c.

*Selections against Deposit or References only.*

**I. J. BERNSTEIN,**

Member MANCHESTER, . . .  
BIRMINGHAM, and . . . . .  
BERLIN SOCIETIES, . . . .

**9 Albert Square, Manchester.**

## SPECIAL OFFER.

				Cal. price.
Board of Education, ½ King unused,	..	..	..	15/-
" " id, "	..	..	..	25/-
Bahamas, 4d on 6d, used,	..	..	..	12/6
B. Bechoanaland, 1889, surcharged both hori. vert., unused, S.G. No. 31b,	..	..	..	25/-
B. South Africa, one penny on 3d, unused,	..	..	..	70/-
" " 4/-, "	..	..	..	57/6
Labuan, 8 on 12c., carmine, used, .. "	..	..	..	35/-
Mauritius, 1859, 1d red, used, .. "	..	..	..	70/-
Queenland, 20/- rose, unused, .. "	..	..	..	45/
South Australia, ½ blue, S.G. No. 222, used, .. "	..	..	..	80/-
Transvaal, error <i>Penij</i> , unused, .. "	..	..	..	60/-
Philippine, 1863, 1r. reddish mauve, unused, .. "	..	..	..	22/6
				40/-
				80/-
				75/-
				110/-

**EMERSON & SON,** <sup>39</sup> **Eastcheap,**  
**London, E.C.**

### FOR SALE. CHEAP.

**FINE OLD EUROPEAN STAMPS,** such as Old Saxony, Baden, Bavaria, Wurtemberg, Hamburg, Bremen, Oldenburg, Schleswig, Spain, France, Swiss, Tuscany. Parma, Sicily, Naples, Norway, Sweden, etc., etc.

ALL ARRANGED IN BOOKS. PLEASE CALL.

## WILLY JACOBY,

27 New Oxford Street, W.C., and 145 Fenchurch St., London, E.C.

## THE WILLIAM STAMP COMPANY,

120 Leadenhall Street, LONDON, E.C.

A FINE MIXTURE of Europeans, Stamps of all Countries, 1/10 per lb.; 10 lbs. (5 kilos), 15/; post free Great Britain, postage abroad extra.

APPROVAL SELECTIONS sent, Wholesale and Retail, on receipt of references.

WHOLESALE PRICE LIST POST FREE.

## BLUETT & CO.,

THE OLD ESTABLISHED STAMP DEALERS,

15 YEARS AT BILLITER SQUARE AND  
3 YEARS AT CROOKED LANE, CITY,  
HAVE OPENED NEW PREMISES AT

432 STRAND, LONDON, W.C.

# D. OSTARA, 24 CORPORATION ST., MANCHESTER.

---

**Finest Stock of Stamps in the North.**  
**£20,000 Value to select from at MOST REASONABLE PRICES.**  
**Selections sent on approval.**

**LIST OF WANTS FILLED.** Over 100 Approval Books of all countries, scientifically arranged to suit Specialists, ranging in value from £60 to £500.

**AUCTIONS PERIODICALLY HELD.** Terms on application.  
**Catalogue Free on receipt of Post-Card.**

**Rare Stamps Bought, especially old Unused English wanted.**

Visitors to Manchester should not fail to call at 24 Corporation Street (50 Yards from the Royal Exchange), and inspect the valuable Stock.

---

*Established in 1875.*

## A. YAREMDJI,

### **40-41 TIDJARET-LAN, CONSTANTINOPLE**

*(Member of the International Philatelic Union; The Junior Philatelic Society; Birmingham Philatelic Society; Scottish Philatelic Society; American Philatelic Society, Boston; Canadian Philatelic Society, Montréal, des Sociétés Philatéliques de Berlin, Dresde, Vienne, Paris, &c., &c.)*

Recommends to British Collectors his immense stock of Used and Unused Stamps of Turkey and Foreign Post Offices in Turkey, Bosnia, Bulgaria, Cyprus, Crete, Egypt, Gibraltar, Greece, Malta, Montenegro, Persia, Roumania, Eastern Roumelia, Russia, Servia, and Tunis.

**Selections of Stamps in singles, pairs, blocks, sent on approval, all classed in order of issues, from Want Lists arranged from the Catalogues of Stanley Gibbons, Scott, Senf, &c., on receipt of good references.**

Catalogue of 80 pages sent on receipt of 1d stamp for postage to collectors. **WHOLESALE PRICE LIST** of Oriental Stamps by 10, 100, or 1000, used and unused, sent to dealers free on application. All Philatelists who desire to do business with a reliable firm in the East should communicate with us.

The **Brightest,**  
**Biggest, . . .**

**Best 1d Stamp Paper**

. . . IS THE . . .

**STAMP COLLECTORS'**

**FORTNIGHTLY.**

*Conducted by PERCY C. BISHOP.*

---

The "S.C.F." is the Official Organ of many leading Philatelic Societies and all the principal Exchange Clubs. A specimen copy (1½d) will be sent, post free, to any reader of the Annual applying for same.

---

*Address :*

The **MANAGER,**

"Stamp Collectors' Fortnightly,"

63 and 64 Chancery Lane,  
**LONDON, W.C.**



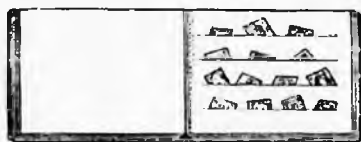
## This is the Stamp Shop for Bargains.

*J. M.*

50 different British Colonials, post free, 6d; 25 different King's Heads, price 6d; 100 different British Colonials, price 2/-; 200 different British Colonials, price 3/-. The following packets contain Foreign and Colonial Stamps, 100 different, price 3d; 200 different, price 1/-; 150 different, 2/-; 500 different, 5/-; 1000 different, 15/-; all special value. Cheap Sets—Dominican Republic, 1902 issue, catalogued 3/-. our price 1/3; Ecuador, 1897 issue 1, 2, 10, 20, and 50 cents, 1899 issue 1, 2, 10, 20, and 50 cents, the 2 sets catalogued 7/9, our price 1/- the 2 sets; 7 Nyassa (Giraffe), price 7d; 6 Crete, price 4d; Columbus, 1 to 10 cents, price 1/-; Newfoundland, Royal Family series, 1 to 5 cents, price 1/1; Belgium Parcel Post, 1902 issue, 10, 20, 50, 60, 70, 80, 90 cents and 1f., price 6d; North Borneo, 1894 (pictorial issue), 1 cent to 24 cents complete, price 2/-; Newfoundland, various issues, set of 11 stamps, price 1/6; Bulgaria, 1902 issue, 1st. to 25st., price 4d; Nyassa (Giraffe), 2½. to 3cor., complete set, price 2/6; British Central Africa, King's Head, 1d, 2d, 4d, and 6d used, price 1/6; Sudan (Camel), 1, 2, 3, and 5m., price 6d,

The "Popular" Postage Stamp Album, post free, 8d; The best 1/- oblong album on the market, containing spaces for 3600 stamps, this includes packet of 50 different stamps and perforation gauge, post free, 1/3.

Selections of Stamps sent on approval at 50 per cent. discount off Gibbons. Send for our latest price list, post free. Lists of Wants receive prompt attention.



Collections and Duplicates purchased to any amount. A fine collection always on sale.

This is an illustration of our well-known "King William" Pocket Duplicate Book, oblong shape, cloth cover, post free, 7d.

# LEWIS MAY & CO.,

15 KING WILLIAM STREET.

CHARING CROSS, LONDON, W.C.

Telephone 6083 Gerrard.

(Three Doors from Gatti's Restaurant).



# J. W. JONES



**444 STRAND, W.C.**

(OPPOSITE CHARING X STATION).

SPECIALIST in

**BRITISH and COLONIAL STAMPS,**

ALSO

**GREEK and UNITED STATES.**

**KING'S HEADS, used or unused,  
at Lowest rates.**

**Single Watermark Stamps—  
A Speciality.**

**List of 600 Sets Post Free on application.**

**Fine Selections of Stamps, used or  
unused—any country—may be had  
by responsible collectors.**

## SPECIAL QUOTATIONS.

GRENADA—Multiple, King, used, -  $\frac{1}{2}$ d, 1d, 2d,  $2\frac{1}{2}$ d, -  $\frac{3}{3}$ .

CYPRUS—King's, single, mint, all values. *Prices on application.*

BRITISH—1d Black, - - - - - from 3d.

„ 2d Blue, no lines, - - - - - from 1/-.

„ Officials, unused and used.

GAMBIA—1/6, 2/6, and 3/-, mint, - - - - - 10/6

Etc., etc., etc.

**Stamps Bought, Sold, or Exchanged to any amount.**

*120 Stock Books and Collections Priced Singly.*

**J. W. JONES, 444 Strand, London.**

# Great Britain.

We have for Disposal

A Practically Complete Collection of the  
Postage and Telegraph Stamps of this  
Country (taken from the 'Imprimatur' Sheets at Somerset House).

This Collection (practically unique), contains **990 Stamps**, all **unused** and **imperforate**, in very fine condition. It is carefully arranged in a philatelic album, and numbers of all plates are given, with dates of registration, &c.

The almost unobtainable rarities, such as 2½d. lilac, wmk. Anchor, plates 4 and 5; 3d, with secret dot; 3d. rose, plate 21, Spray; 4d. vermilion, plate 16; 4d. green, plate 17; 6d. purple, plate 10; 6d. chestnut, plate 13; 6d. grey, Spray, plate 18; 8d. orange, plate 2; 9d., hairlines; 9d., plate 5; 10d., plate 2; 1/- green, plate 5, Emblems; 2/- plate 3; 5/- plate 4, wmk. Cross, &c., &c., are all represented in superb condition, with many others too numerous to mention here.

We are prepared to break up the Collection to anyone desiring a portion only.

**FULL PARTICULARS, PRICE, &c., ON APPLICATION.**

We are always prepared to purchase Collections to any amount. Specially wanted—Large General Collections. Highest Prices Given. We have over 250 Books of Countries now made up, ready to send on approval. Let us know the country you are interested in. Want Lists given special attention.

## Bridger & Kay

65 BISHOPSGATE STREET, WITHOUT, LONDON, E.C.

Telephone 2316 Central.

Telegraphic Address—"Nullified, London."

Telephone 4424 Gerrard.

# Glendining & Co., Limited,

7 ARGYLL STREET, ———  
Regent Street, London, W.

---

Auctioneers and Valuers of Coin Collections,  
Medal Collections, Postage Stamp Collections.  
Old China, Engravings,  
Antique Property of all kinds.

---

WEEKLY AUCTION SALES OF COINS AND MEDALS,  
ORIENTAL, FINE ART, VIOLINS, AND  
MISCELLANEOUS PROPERTY.  
*Sales by Private Treaty promptly arranged.*

---

Telephone 6224 AVENUE.

## HORACE W. BECK,

DEALER IN RARE STAMPS.

---



**Speciality : MINT COLONIALS.** 

All Auctions attended, and Stamps bought on commission.  
Write for Terms. . . . .

---

**Collections Bought.**

---

13 CULLUM STREET, FENCHURCH STREET,  
LONDON, E.C.

# FREDK. R. GINN,

## 143 STRAND, LONDON, W.C.

Silver Medal, London Exhibition, 1897.

Established 1880.

The House for genuine bargains. High-class Stamps at strictly moderate prices. Speciality: Filling wants lists from every grade of collector. Fine copies only supplied at special liberal discounts off catalogue prices.

### A few of my SPECIAL OFFERS for Cash with order.

All Fine Used Copies, unless otherwise stated.

CANADA, 1851, 3d, red, fine, laid	£0 5 6	BRITISH COLONIA, 1867, perf. 12½, 50c., violet	2s 0 0
" " 6d, purple, "	0 18 0	" " 1867, perf. 12½, 1 dollar, green	2 10 0
" " 1850-57, wove, 1d, rose	0 10 0	" " perf. 14, 2c., brown, unused	0 3 0
" " " 3d, vermilion, fine	0 0 9	" " " 5c., red	0 10 6
" " " 6d, purple-black	0 14 0	" " " 25c., yellow, unused	0 5 0
" " " 7½d, green	1 15 0	" " " 50c., violet, unused	0 15 0
" " " 10d, blue	0 17 6	SEYCHELLES, 1890, 96c., mauve and carmine	0 10 0
" " " very thick paper, 6d, dull purple	1 13 6	" " 1893, 45c. on 48c., "	0 2 0
" " 1858, perf., wove paper, 1d, rose	0 12 6	" " " 96c. on 96c., "	0 8 6
" " " " 3d, vermilion	0 6 6	" " " 45c., brown and carmine	0 5 0
" " " " 6d, grey blue	4 13 0	" " 1896, 36c. on 45c., unused	0 4 0
" " 1830, 2c., rose, fine	0 2 6	" " 1897, 36c., brown & carmine, unused	0 5 0
" " " 10c., black-brown, superb	2 5 0	" " " 76c., yellow and violet	0 3 6
" " " 10c., purple-brown, fine, unused	0 15 0	" " " 17, 50c., grey and carmine	0 4 6
" " " 12c., yellow-green, unused	0 8 0	" " " 27, 25c., blue and green	0 7 0
" " " 17c., blue, unused	0 13 0	W. AUSTRALIA, 1854, imperf., 1d black	0 4 0
FALKLAND ISLES, 1878, <i>no work</i> , 1d, claret, unused	0 12 6	" " " 2d blue	0 6 6
" " " " <i>no work</i> , 4d, grey-black	0 7 6	" " " 1s brown	0 12 6
" " " " <i>no work</i> , 6d, green, unused	0 3 0	" " " 1s chocolate	1 15 0
" " " " <i>no work</i> , 1s, brown	0 2 6	" " " rouletted, 1d black	1 10 0
" " 1886, CA sideways, 4d, olive-bk.	0 8 6	" " " 2d blue	2 0 0
" " 1891, 1d on 1d, claret	0 5 0	" " 1857, imperf., 1s pale brown	1 14 0
BRITISH COLONIA, 1861, 2d, rose	0 10 0	" " " 2d brown on red	3 0 0
" " 1865, imperf., 10c. blue	1 10 0	" " " 6d black-bronze	1 15 0
" " " perf. 14, 5c., rose	0 13 6	" " " 6d golden-bronze	4 8 0
" " " " 10c., blue	0 13 6	" " " 2d pale orange	0 5 0
" " " " 3d, blue, unused	0 2 6	" " " 4d blue, unused	0 12 6
" " 1867, perf. 12½, 5c., red, unused	1 10 0	" " " 6d sage-green	1 0 0
" " " " 10c., lake	2 12 6		
" " " " 25c., yellow	0 17 6		

*N.B.*—The above quotations are for Cash with Order. Only fine, perfect, and fully guaranteed copies supplied. Specimens not according to description may be returned, and cash will be refunded in full, thus affording a perfect guarantee to customers.

**London Stamp Auctions.**—Mr. FREDK. R. GINN attends every Sale of Stamps held in London, and is one of the largest buyers. He personally undertakes the examination and purchase on commission of any lots for either Home or FOREIGN clients on most reasonable terms, which may be had on application. Mr. Ginn being an Expert of many years' standing, clients may rely upon every care being taken in carrying out their instructions. The advantage of employing a reliable Expert who is independent of the Auctioneers is very obvious, especially in the case of Foreign clients. Every commission entrusted to Mr. Ginn is executed at lowest possible price.

*Approval Department.*—Selections of Stamps of any country or colony made up to meet the requirements of any collector, and sent on approval with pleasure against usual business references.

Note Name and Only Address:—

**FREDK. R. GINN,** Stamp Expert, Valuer, and Publisher, . . . .

143 STRAND, LONDON, W.C.

# Messrs. Plumridge & Co.,

STAMP AUCTIONEERS AND

STATIONERS, ASTORIA

63

OLD

THE



# FREDK. R. GINN,

## 143 STRAND, LONDON, W.C.

Silver Medal, London Exhibition, 1897.

Established 1880.

The House for genuine bargains. High-class Stamps at strictly moderate prices. Speciality: Filling wants lists from every grade of collector. Fine copies only supplied at special liberal discounts off catalogue prices.

A few of my SPECIAL OFFERS for Cash with order.

All Fine Used Copies, unless otherwise stated.

CANADA, 1851, 3d, red, fine, laid	£0 5 6
" " 6d, purple, "	" 0 18 0
" " 1852-57, wave, 3d, rose	" 0 10 0
" " " 3d, vermilion, fine	" 0 11 0
" " " 6d, purple-black	" 0 14 0
" " " 7d, green	" 1 15 0
" " " 10d, blue	" 0 17 0
" " " very black paper, 6d, dull purple	" 1 13 6
" " 1858, perf., wave paper, 1d, rose	" 0 12 6
" " " " 3d, vermilion	" 0 6 6
" " " " 6d, grey-blue	" 4 13 0
" " 1859, 2c., rose, fine	" 0 2 6
" " " 10c., black-brown, superb	" 2 5 0
" " " 10c., purple-brown, fine, unmsd	" 0 15 0
" " " 12c., yellow-green, unmsd	" 0 8 0
" " " 17c., blue, unmsd	" 0 13 0
FALKLAND ISLES, 1878, <i>no work</i> , 1d, claret, unmsd	" 0 12 6
" " " <i>no work</i> , 4d, grey-black	" 0 7 6
" " " <i>no work</i> , 6d, green, unmsd	" 0 3 0
" " " <i>no work</i> , 1s, brown	" 0 5 6
" " 1886, CA sideways, 4d, olive-bk.	" 0 8 6
" " 1891, 3d on rd, claret	" 0 5 0
BRITISH COLUMBIA, 1861, 2d, rose	" 0 10 0
" " 1865, imperf., 10c, blue	" 1 10 0
" " " perf., 14, 5c., rose	" 0 14 6
" " " " 10c., blue	" 0 13 6
" " " " 3d, blue, unmsd	" 0 2 6
" " 1867, perf., 12, 5c., red, unmsd	" 1 10 0
" " " " 10c., lake	" 2 12 6
" " " " 25c., yellow	" 0 17 6

BRITISH COLUMBIA, 1867, perf., 12, 5c., violet	£1 0 0
" " 1867, perf., 12, 1 dollar, green	" 0 10 0
" " " perf., 14, 2c., brown, unmsd	" 0 3 0
" " " " 5c., red	" 0 10 6
" " " " 25c., yellow	" 0 5 0
" " " " 50c., violet, unmsd	" 0 15 0

SEYCHELLES, 1899, 95c., mauve and carmine	0 10 6
" " 1893, 45c. on 48c. "	" 0 4 0
" " " 50c. on 60c. "	" 0 8 6
" " " 45c., brown and carmine	" 0 5 0
" " 1896, 30c. on 45c. unmsd	" 0 4 0
" " 1897, 30c., brown & carmine, unmsd	" 0 5 0
" " " 76c., yellow and violet	" 0 3 6
" " " 11s, mauve and red	" 0 1 0
" " " 11s, 50c., grey and carmine	" 0 2 6
" " " 2c. 25c., blue and green	" 0 7 0

W. AUSTRALIA, 1824, imperf., 1d black	0 4 0
" " " " 2d blue	" 0 6 6
" " " " 1s brown	" 0 12 6
" " " " 1s chocolate	" 1 15 0
" " " " rouletted, 1d black	" 1 10 0
" " " " " 3d blue	" 2 0 0
" " " " 1s pale brown	" 1 11 0
" " 1857, imperf., 2d brown on red	" 3 0 0
" " " " 6d black in size	" 1 15 0
" " " " 6d golden-bronze	" 4 0 0
" " 1866, " 2d pale orange	" 6 5 0
" " " " 2d blue, unmsd	" 0 12 6
" " " " 6d sage green	" 1 0 0

*N.B.*—The above quotations are for Cash with Order. Only fine, perfect, and fully guaranteed copies supplied. Specimens not according to description may be returned, and cash will be refunded in full, thus affording a perfect guarantee to customers.

**London Stamp Auctions.**—Mr. FREDK. R. GINN attends every Sale of Stamps held in London, and is one of the largest buyers. He personally undertakes the examination and purchase on commission of any lots for either Home or Foreign clients on most reasonable terms, which may be had on application. Mr. Ginn being an Expert of many years' standing, clients may rely upon every care being taken in carrying out their instructions. The advantage of employing a reliable Expert who is independent of the Auctioneers is very obvious, especially in the case of Foreign clients. Every commission entrusted to Mr. Ginn is executed at lowest possible price.

*Approval Department.*—Selections of Stamps of any country or colony made up to meet the requirements of any collector, and sent on approval with pleasure against usual business references.

Note Name and Only Address:—

**FREDK. R. GINN,** Stamp Expert, Valuer, and Publisher, . . . .

143 STRAND, LONDON, W.C.

# Messrs. Plumridge & Co.,

STAMP AUCTIONEERS AND

COMMISSION AGENTS,

**63 and 64 CHANCERY LANE,  
LONDON, W.C.**

**B**OLD AUCTION SALES on each alternate Thursday and Friday during the Season—September to July.

Their Sales are attended by most of the Leading Collectors and Dealers, and Catalogues are issued in ample time to enable Clients residing abroad to send bids.

Philatelists who may contemplate disposing of their collections should communicate with us in order if possible to include in the sale. Our inclusive Commission Charge, which is the lowest quoted by any of the leading Auctioneers, is 20 per cent.

Special arrangements made for Important Collections or Dealers' Stocks.

**Immediate Cash Advances in any amount.**

**Free Estimates and Valuations on application.**

**Private Sales and Sales by Lot.**

**FRIVOLIOUS OFFERS NOT ACCEPTED.**

**DEPARTMENTS:**

- Classical and Modern Manuscripts and Books
- Antiquaries and Archaeological Objects
- Printed Books and Pamphlets
- Scientific Instruments and Apparatus
- Works of Art

**WARRANTY OF AUTHENTICITY AND GENUINENESS.**  
**TRIPLEX SECURITY.**



# GIBBONS' STAMP WEEKLY

EDITED BY MR. E. J. NANKIVELL

Prepaid subscriptions must commence with the current number, and can be for 3, 6, or 12 months, but for not less than 3 months, at the following rates, post free:

	GT. BRITAIN AND COLONIES	U.S.A. AND CANADA	FRANCE, ITALY, OR SPAIN	GERMANY
3 Months	1s. 8d.	40 c.	Fr. 2.00	M. 1.75
6 "	3s. 3d.	80 c.	Fr. 4.00	M. 3.50
12 "	6s. 6d.	\$1.50	Fr. 8.00	M. 6.90

Remittances should be made by Cheque or Money Order payable in London and to the order of Stanley Gibbons, Limited.

In Great Britain it will be cheaper for our readers to order *Gibbons' Stamp Weekly* from their nearest Newagent or Stationer, or from the Railway Bookstall. This will save postage, and the paper will be delivered flat, instead of folded as it would be if posted.

*Gibbons' Stamp Weekly* is produced in order to help and encourage those who are either now forming a collection or are about to start the most fascinating and fashionable hobby of Stamp Collecting.

The aim of *Gibbons' Stamp Weekly* will be to help young collectors by publishing series of articles on all matters that may be of use to them.

A Special Bargain is offered to readers of the *Weekly* when stamps are sold at from One-Quarter to Two-Thirds of the Catalogue Price.

## A STAMP STORY S. R. CRACKETT

Author of "The Life of King George VI" and "The Story of the Royal Family"  
Ed. Kemble

## APPEARING WEEKLY

STANLEY GIBBONS LTD. 25, Abchurch Lane, London, E.C. 4  
 Sole Importers for Great Britain and Ireland  
 GIBBONS' STAMP WEEKLY, 1940