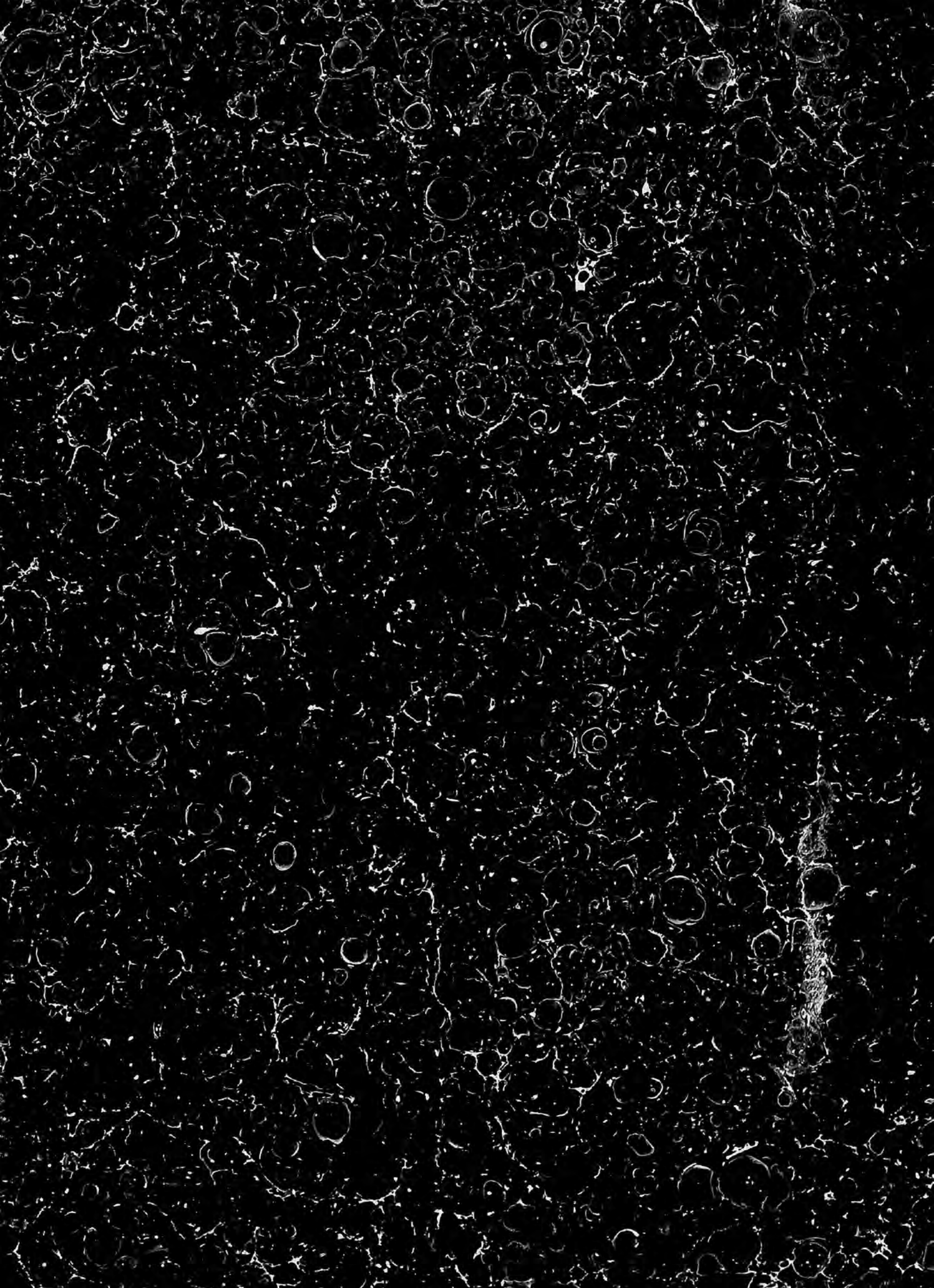




Bibliotheca Ludoviana.

PHILATELIC SECTION.



vol. 121.





Crawford 904 (1-28)

cc  
1  
JANUARY, 1896.

# WHOLESALE PRICE LIST

OF

UNITED STATES AND FOREIGN STAMPS AND STAMPED ENVELOPES.

FOR SALE BY

RICHARD R. BROWN,  
KEYPORT, N. J.

ALL STAMPS advertised in this list are warranted as genuine.

Stamps advertised on this list are not sent on approval; but if not satisfactory may be returned within forty-eight hours after receipt, and amount due will be refunded. In no case can a portion of any one kind be returned; it must be either the whole of one kind or none.

**ORDERS UNDER \$1 ARE RESPECTFULLY DECLINED.**

Orders to the value of \$5 or over will be sent by registered mail at my expense; under \$5 by mail at purchaser's risk.

Not less than 50 sold at 100 rate, and not less than 5 sold at 10 rate. Stamps priced under 50 cents per hundred, and under 50 cents per 10, are not sold in quantities less than per hundred or per ten.

Please write name and full address PLAINLY with all communications.

All previous wholesale lists and quotations of United States and Foreign Stamps are hereby cancelled.

Remittances should be made by Bills or P. O. Money Orders, payable to RICHARD R. BROWN, KEYPORT, N. J.

**TERMS—CASH WITH ORDER—NO DISCOUNT.**

**SPECIAL NOTICE—REFERENCES ARE NOT REQUIRED.** Orders are only filled when accompanied with remittances.

Orders are filled the same day as received, if remittances are made by Bills or P. O. Money Order.

**CHECKS—**When checks are received in payment the order is filled the day the check has been collected, which causes a delay of from three days to five weeks; for that reason it is advisable NOT TO REMIT BY CHECK.

Unused stamps are accepted in payment for stamps advertised on this list at 3 per cent. discount.

**SPECIAL BARGAIN.**

	PER 3	PER 10
Peru, Arequipa, 1882, 25c Red and Black, unused . . . . .	\$1.50	\$4.00

RICHARD R. BROWN'S PRICE LIST.

UNUSED STAMPS.  
UNITED STATES.

ADHESIVE	PER 10	PER 100
1857, 3c red . . . . .	.40	\$3.50
1890, 1c blue . . . . .	.15	1.25
Interior 2c vermilion . .	.40	
Interior 3c vermilion . .	.25	
Interior 6c vermilion . .	.40	
Postoffice 3c black . . .	.35	
Officially sealed 1888 br .	.30	
Officially sealed 1891 br .	.25	
Treasury 3c brown . . . .	.50	
War 1c red . . . . .	.25	
War 2c red . . . . .	.25	
War 3c red . . . . .	.20	
War 6c red . . . . .	.30	

ENTIRE ENVELOPES.

	PER 10	PER 100
1887, 4c carmine on white .	.70	
1887, 5c blue on white . .	.80	
1893, 1c Columbian . . . .	.30	\$2.00
1893, 2c Columbian . . . .	.35	3.00
1893, 5c Columbian . . . .	.80	
1893, 10c Columbian . . . .	\$1.50	
1873, P. O. 3c bk. on lem .	.65	
1874, P. O. 6c bk. on lem .	.80	
1878, P. S. black on white .	.25	2.20

UNUSED ENVELOPES CUT SQUARE.

1873, P. O. 3c bk on lem .	.35
1874, P. O. 3c bk on lem .	.25
1874, P. O. 6c bk on lem .	.60
1878, P. S. black on white .	.20
1878, P. S. blue on blue . .	.40

FOREIGN STAMPS.

	PER 10	PER 100
Angola '93, 2½r . . . . .	.10	.60
Anjouan '93, 1c . . . . .	.05	.40
Argentina '90, ¼c . . . . .	.05	.25
Azores '85, 2r . . . . .	.10	.60
Azores '87, 2½r . . . . .	.10	.60
Bavaria '70, 1 & 3k asst .	.05	.40
Benin '93, 1c . . . . .	.05	.40
Bosnia ½kr . . . . .	.05	.40
Brazil '94, 10r . . . . .	.10	.60
Bulgaria '86, 1s . . . . .	.05	.40
Bulgaria '89 2s . . . . .	.10	
Cape Verde '86 5r . . . . .	.15	
Cape Verde '93 2½r . . . .	.10	.60
Chefoo '93 ½c . . . . .	.10	
Chingkiang '94 ½c . . . . .	.10	.60

	PER 10	PER 100
Monaco '91 5c . . . . .	.05	.40
Mozambique '93 2½r . . . .	.10	.60
New Caledonia '93 2c . . . .	.10	
Nossi Be '94 1c . . . . .	.05	.40
Nyassaland '94 10r . . . . .	.15	
Obock '93 1c . . . . .	.05	.40
Paraguay '92 1c . . . . .	.10	.60
Phillipine IIs '90 ¼c . . . .	.05	
Phillipine IIs '90 1m . . . .	.05	
Phillipine IIs '90 2m . . . .	.10	.60
Phillipine IIs '94 1m . . . .	.10	.60
Porto Rico '82 ½m . . . . .	.10	
Porto Rico '82 2m . . . . .	.10	
Porto Rico '82 4m . . . . .	.15	
Porto Rico '84 ½m . . . . .	.05	.35

RICHARD R. BROWN'S PRICE LIST.

Antioquia '92 1c . . . . .	.15	Porto Rico '84 1m . . . . .	.10	.60	
Bolivar '91 1c . . . . .	.15	Porto Rico '90 ½m . . . . .	.10		
Hanama '92 1c . . . . .	.15	Porto Rico '92 ½m . . . . .	.05	.30	
Costa Rica '63 ½r . . . . .	.10	.60	Porto Rico '92 1m . . . . .	.05	.35
Costa Rica '89 asst . . . . .	.10	.50	Porto Rico '92 2m . . . . .	.05	
Cuba '57 ½r . . . . .	.10	.75	Porto Rico '94 1-2m . . . . .	.05	.30
Cuba '57 1r . . . . .	.15		Porto Rico '94 1m . . . . .	.05	.35
Cuba '57 2r . . . . .	.50		Portug'se Congo '94 2 1-2r	.10	.60
Cuba '75 12½c . . . . .	.60		Roman States '62-68 asst . .		.30
Cuba '79 5c . . . . .	.10	.75	Roumania '85 1 1-2b . . . . .	.10	
Cuba '80 12½c . . . . .	.50		Roumania '90 1 1-2b . . . . .	.10	
Curacas '89 1c . . . . .	.10		Roumania '94 1 1-2b . . . . .	.10	
Djibouti '94 1c . . . . .	.05	.40	St Thomas & St Prince		
Dutch Indies '87 1c . . . . .	.10	.60	'93 2 1-2r . . . . .	.10	.60
Ecuador '81 1 & 2c . . . . .	.10	.60	Samoa '77 1d . . . . .	.10	.60
Ecuador '87 1 & 2c . . . . .	.10	.50	Samoa '77 3d . . . . .	.10	.60
Eritrea '92 1c . . . . .	.05	.40	Samoa '82 2d . . . . .	.10	.60
Eritrea '92 2c . . . . .	.10		San Marino '94 2c . . . . .	.10	.60
Greece '88 1l . . . . .	.10		Servia '81 well asst . . . . .	.10	.60
Greece '91 1l . . . . .	.05	.40	Shanghai '93 1-2c . . . . .	.10	.60
Guniea '93 2 ½r . . . . .	.10		Shanghai P. D. '93 1-2c . .	.10	.60
Honduras '78 1c . . . . .	.10	.80	Switzerland '81 4var asst	.05	.30
Nowanugger '93 1d . . . . .	.10	.80	Timor '93 2 1-2r . . . . .	.10	.60
Italy '58-'62 asst . . . . .	.05	.35	Tunis '88 1c . . . . .	.05	
Luxemburg '82 1c . . . . .	.05	.40	Venezuela '83 asst 6var		.70
Luxemburg '82 2c . . . . .	.10	.75	Zambesi '94 2 1-2r . . . . .	.10	.60
Macao '93 2 ½r . . . . .	.10	.60			

USED STAMPS.

UNITED STATES.

	PER 10	PER 100		PER 10	PER 100
1857, 3c red . . . . .	.05		1887, 2c green . . . . .	.05	.15
1861, 3c red . . . . .	.05		1893, 1c Columbian blue . . .	.05	.25
1868, 3c red grilled . . . . .	.10		1893, 2c violet . . . . .	.05	.20
1869, 3c blue . . . . .	.15		1893, 4c ultra marine . . . . .	.25	
1872-75, 1c blue . . . . .	.20		1893, 5c chocolate . . . . .	.25	
1872-75, 3c green . . . . .	.05	.25	1893, 6c purple . . . . .	.75	
1872-75, 2c brown . . . . .	.25		1893, 8c magenta . . . . .	.40	
1875, 2c vermilion . . . . .	.04	.15	1863, 10c black brown . . . . .	.35	
1882, 1c blue re engraved . . .	.05		1890, 1c blue . . . . .	.05	.20



RICHARD R. BROWN'S PRICE LIST.

1882, 3c green re-engraved .05	1890, 2c carmine . . . . . .02	.20
1883, 2c claret . . . . . .02	Envelopes, assorted . . . . .	.20
1887, 1c blue . . . . . .05		

UNUSED SETS.

	NO. IN SET	PER 3	PER 10
Bavaria '70 . . . . .	6	.30	.90
Berendorf . . . . .	5	.15	.45
China '85 . . . . .	3	.50	\$1.50
Corea . . . . .	3	.25	.65
Costa Rica '89, 1c to 50c . . . . .	6	.25	.70
Constantinople . . . . .	3	.10	.25
Cuba '92, 1-2 to 8m . . . . .	6	.20	.60
Cuba '94, 1-2 to 8m . . . . .	6	.15	.40
Ecuador '81-'87, 1c to 50c . . . . .	7	.20	.60
Alsace & Lorraine, type reset . . . . .	7	.50	1.25
Hamburg envelopes . . . . .	7	.20	.50
Nowanugger '93 . . . . .	3	.15	.40
Italy '58-'62 . . . . .	6	.10	.25
Italy, 2c surcharged on postal packet . . . . .	6	.20	.55
Mexico '64 . . . . .	4	.25	.75
Paraguay '84 . . . . .	3	.25	.75
Porto Rico '92, 1-2 to 8m . . . . .	6	.25	.70
Roman States '62-'68 . . . . .	14	.20	.50
Samoa '77-'82 . . . . .	8	.20	.60
Saxony '63 . . . . .	5	.15	.40
Servia '81 . . . . .	6	.25	.65
Switzerland '81 . . . . .	6	.10	.25
Switzerland '81 . . . . .	9	.20	.50
Switzerland telegraph . . . . .	4	.10	.30
Venezuela Escuelas '83 . . . . .	6	.20	.60
Venezuela Correos '83 . . . . .	5	.20	.60

STAMPS BY THE 1000.

Australian 1 & 2d . . . . .	75	Russia . . . . .	.75
Italy asst . . . . .	.40	Spain . . . . .	1.00
Japan asst . . . . .	1.00	Sweden 10 & 12ore . . . . .	.3
Portugal asst . . . . .	1.00		

RICHARD R. BROWN'S PRICE LIST.

THE BEST \$5 STOCK.

It contains—250 different stamps of all countries,  
500 finely mixed English Colonials,  
1000 finely mixed United States  
1000 finely-mixed European  
100 stamps to sell at 1 cent each  
50 stamps to sell at 2 cents each  
25 stamps to sell at 3 cents each  
20 stamps to sell at 5 cents each  
25 stamps to sell at 8, 10, 15, 20 and 25c  
Five of each.

If you want the greatest bargain, send for this outfit and make money.

With this we also give 200 Fine Approval Sheets and 3000 Perfect Stamp Hinges.

EXCELSIOR DEALERS' OUTFIT.

THE MOST COMPLETE AND CHEAPEST STOCK OF STAMPS EVER OFFERED.

IT CONSISTS OF THE FOLLOWING :

1,000 different stamps from every part of the world  
1,500 South and Central American and Mexican stamps  
1,000 well mixed British Colonials (no Canadas)  
10,000 European stamps. Very fine for packets  
50 stamps to retail at 10, 15, 20, 25 and 50c each. Ten of each

13,550 STAMPS, \$20

Besides these we add—

500 linen approval sheets, 10,000 stamp hinges.

This stock is sent free on receipt of \$20 to any address in the United States, Canada and Mexico; postage \$2 extra to foreign countries in the Postal Union.

RICHARD R. BROWN'S PRICE LIST.

---

OUR \$10 DEALERS' OUTFIT CONSISTS OF :

- 500 stamps to retail at 1 cent each
- 200 stamps to retail at 2 cents each
- 100 stamps to retail at 3 cents each
- 50 stamps to retail at 5 cents each
- 50 stamps to retail at 8, 10, 15, 20 and 25 cents. Ten of each.
- 1000 finely assorted Central and South American and Mexico.  
Over 80 varieties.
- 1000 finely assorted English Colonials (no Canada) including Gold Coast, Sierra Leone, British Honduras, etc.
- 2000 well mixed European stamps, fine lot for packets and cheap sheets. About 125 varieties.
- 500 varieties of postage stamps from all over the world.
- 500 well mixed United States, all obsolete.
- 250 linen approval sheets.
- 5000 stamp hinges.

ALL THIS WILL GO FOR \$10 NET CASH,

And is the GREATEST BARGAIN which has ever been offered. This stock could not be duplicated for the price by any other dealer. Any dealer can make from \$35 to \$50 clear profit out of them. Satisfaction guaranteed.

---

ZECHEMEYER'S CONTINENTALS.

Per 10,000 . . . . .	\$ 1 75
Per 25,000 . . . . .	4.00
Per 50,000 . . . . .	7.50
Per 100,000 . . . . .	13 50

RICHARD R. BROWN'S PRICE LIST.

POSTAGE STAMP ALBUMS.

PHILATELIST ALBUMS.

	RETAIL PRICE.	PER 3.	PER 10.
Boards, half cloth . . . . .	25c . . . . .	45c . . . . .	\$1.40
Cloth, gilt . . . . .	50c . . . . .	.90c . . . . .	\$2.80

IMPERIAL ALBUMS.

	RETAIL PRICE.	PER 3.	PER 10.
Cloth, gilt . . . . .	75c . . . . .	\$1.35 . . . . .	\$4.25

INTERNATIONAL ALBUMS, NEW EDITION 1896.

	RETAIL PRICE.	PER 3.	PER 10.
Boards, half cloth . . . . .	\$1.50 . . . . .	\$2.70 . . . . .	\$8.50
Cloth, magnificently gilt . . . . .	\$2.50 . . . . .	\$4.50 . . . . .	\$14.25

SCOTT'S CATALOGUES, 56TH EDITION.

	RETAIL PRICE.	PER 3.	PER 10.
	50c . . . . .	\$1.20 . . . . .	\$3.50

RICHARD R. BROWN'S PRICE LIST.

APPROVAL SHEETS TO HOLD 25 STAMPS.

100 . . . . .	25c
500 . . . . .	\$1.25
1000 . . . . .	\$2.00
5000 . . . . .	\$9.00

EXTRA GUMMED HINGES.

10,000 . . . . .	50c
20,000 . . . . .	95c
50,000 . . . . .	\$2.10
100,000 . . . . .	\$4.00

PACKETS.

	PER 3	PER 10	PER 100	PER 1000
50 varieties . . . . .	.10	.25	\$2.25	\$20.00
100 varieties . . . . .	.20	.55	4.75	45.00
200 varieties . . . . .	.80	\$2.50	22.50	200.00
500 varieties . . . . .	\$5.00	15.00		
1000 varieties . . . . .	18.00	55.00		

Above packets contain no Locals, Revenues, Cards or Telegraphs, or U. S. Stamps. Expressage at cost of purchaser.

FINELY MIXED STAMPS.

For packets and sheets to sell at 1, 2, 3 and 5c each. No common Continentals.

Per 1000 . . . . .	\$2.00
Per 5000 . . . . .	\$8.00
Per 10,000 . . . . .	\$15.00