

Sent Post Free for **TEN CENTS**, which may be sent in unused Postage Stamps
of the lowest value.

DESCRIPTIVE
CATALOGUE & PRICE LIST



OF
FOREIGN AND COLONIAL

Postage Stamps,
POST CARDS, Etc.

BY
HENRY HECHLER,

Importer and Dealer in Foreign Postage Stamps,
Corner of Buckingham and Argyle Streets,
HALIFAX, - - - NOVA SCOTIA.

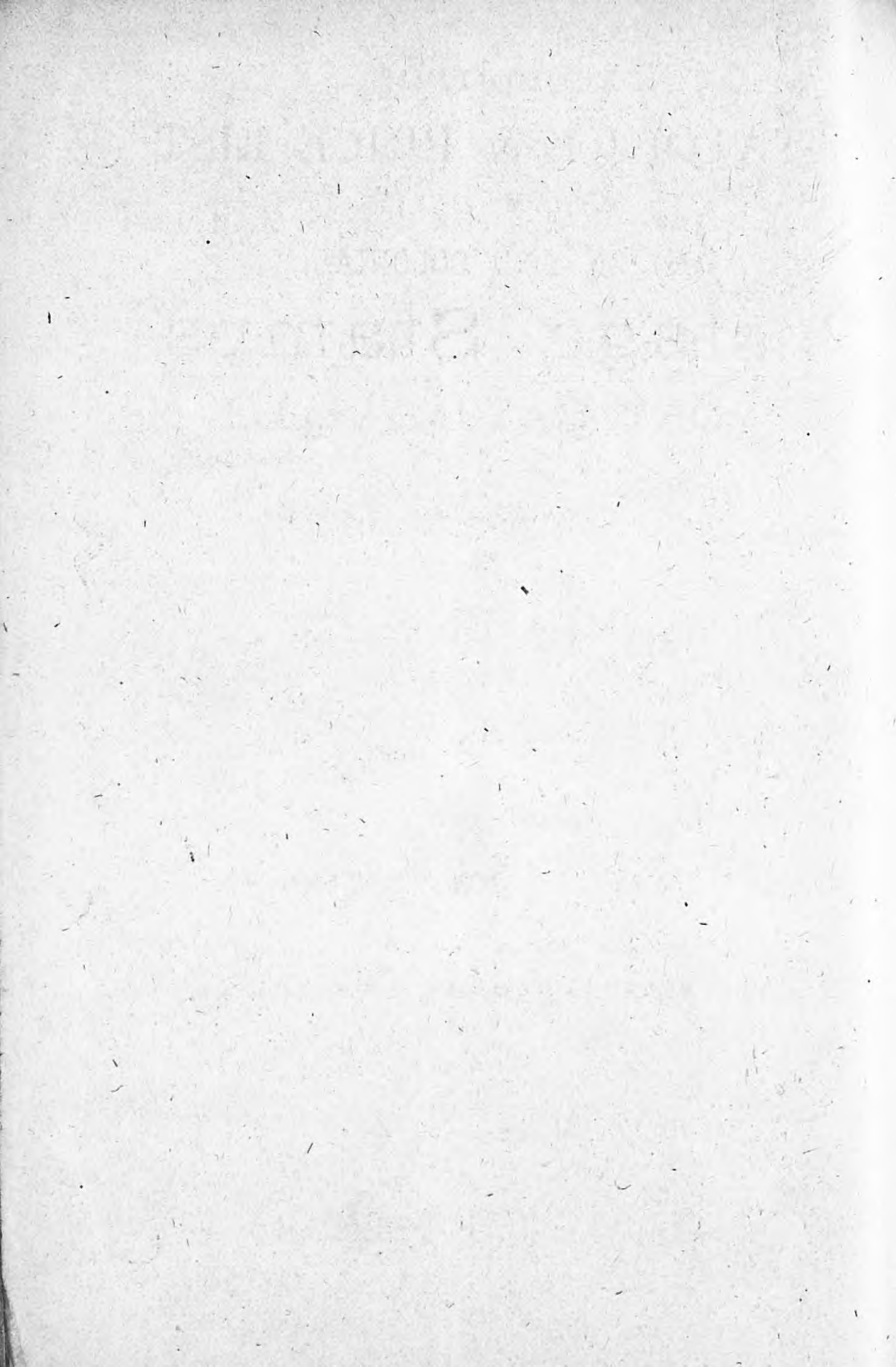
1881.

SEE SPECIAL NOTICE ON PAGE 20.

HALIFAX, N. S.
PRINTED BY JOHN BURGOYNE, 136 HOLLIS STREET.

1881.

On July 1st will be published an Addenda to the Catalogue, including new issues.



DESCRIPTIVE
CATALOGUE & PRICE LIST

OF



FOREIGN AND COLONIAL

Postage Stamps,
POST CARDS, Etc.



BY

HENRY HECHLER,

Importer and Dealer in Foreign Postage Stamps,
Corner of Buckingham and Argyle Streets,

HALIFAX, - - - NOVA SCOTIA.

SEE SPECIAL NOTICE ON PAGE 20.

CORRECTIONS.

German Post Card, lilac..... 4 cents	P. E. Island, lilac, 1872..... 15 cents
San Domingo, carmine on salmon 25 cents	South Australia, 2d., yellow..... 5 cents
New Brunswick..... 5 cent rect, (dark green)	Spain, War Tax,..... 5 c. d. p. (black)

 SETS FOR CASH ONLY.

HALIFAX, N. S.

PRINTED BY JOHN BURGOYNE, 136 HOLLIS STREET.

CHEAP SETS OF STAMPS.

	No. in set.	Price.		No. in set.	Price.
* Antioquia	2	10	Peru, 1867	3	20
* Argentine Republic, 1862	3	15	" 1877-79	4	25
" " 1867-78	6	25	" Unpaid Letter	3	25
* Argentine Republic, 1867-73, complete	8	4.00	" Envelopes	3	42
* Austrian Italy, 1850	6	30	Porto Rico, 1873-76, surchd	5	52
* Baden, 1864-68	5	30	" " 1877-80	8	35
" Land Post	3	18	" " 1/2 LO 4 c. d p	6	50
* Bavaria, 1870-72	6	20	" " 1881	6	35
* Bergedorf	5	18	Portugal	11	20
* Berinuda	5	20	* Prince Edward Island, original	13	1.00
" Cards	2	10	* Prussia, 1850	5	20
* Bhopaul	3	35	" Queensland, old issue	7	32
* Brazil	7	20	* Romagna	8	4.35
* Bremen	4	35	* Roman States, 1867	6	25
* British Gulana	4	15	* Roumania, 1865	3	25
* Brunswick	5	15	" " 1866	3	25
* Canada	13	25	" " 1871-80	12	20
Cape of Good Hope	4	12	Russia	7	18
* Cashmere, black blue, red	3	30	St. Domingo	4	60
* China	3	35	St. Helena	3	25
* Confederate States	4	15	* Sardinia	6	20
Costa Rica	2	12	* Sandwich Island	4	22
* Cuba, assorted, 1857-70	5	25	* Sarawak	2	14
" " 1881	4	20	* Saxony	6	15
Curacao	6	35	* Shanghai	2	10
* Danube Steam Nav Co	4	25	" Schleswig-Holstein	2	30
* Danish West India	7	35	* Sierra Leone	3	18
* Denmark	20	50	* Si moor	2	9
* Dominica	2	8	Servia, 1869	9	35
* Dutch Indies	5	15	Spain, 4 and 10 pe-eta 1870-73	2	75
* Ecuador, 1865-73	3	16	" Official Stamps	4	12
* Fernando Po	3	40	" " Don Carlos	4	50
* Egypt	6	15	* Surinam	2	7
" Provisional	2	20	Sweden	8	14
* French Colonies, 1877-78	6	25	Switzerland, 1854	4	15
* Gambia	2	14	" " Rayon	2	10
* Gold Coast	3	20	" " 1862-78	6	10
* Great Britain	20	30	" Unpaid letter stamps	9	50
* Grenada	2	12	South African Republic	5	75
* Guatemala, (rare)	4	56	Tasmania, old issue	7	35
* Hamburg	10	35	Turkey	8	20
" Envelopes	6	35	" Constantinople	3	15
* Hamburger, Locals	8	6	Tuscany	5	30
Hanover	5	25	* U. S. A., 1851	2	12
* Heligoland, 1867-73 rare 1/2)	8	35	" Departments	5	20
* Honduras	2	10	" Centennial Envelopes	2	10
* Hungary, 1872	6	18	* U. S. Columbia (rare)	5	1.32
" " 1874	5	10	* Venezuela, 1854	3	25
* Italy, 1851	3	3.25	" " 1866-75	3	25
" Old issue	14	25	" " 1880	5	50
" Unpaid	12	75	" " Escuelas	5	50
" Officials	8	1.00	* Virgin Island	2	9
India	5	15	Wurtemberg, 1851	3	10
* Jamaica	6	18		18	50
" Post Cards	3	16			
* Japan	4	25			
* Lubec, 1859	5	30			
* Mauritius	8	40			
* Mecklenburg Schwerin Envelopes	3	20			
* Mecklenburg Strellitz	4	15			
Modena	4	20			
* Montenegro	2	16			
* Naples, 1861	8	45			
Natal	8	30			
* Netherland Newspaper Stamps	4	6			
* New Brunswick	7	1.85			
* Newfoundland, 1857-60	12	1.75			
* Nova Scotia, 1857, rd. 3d. 6d	3	1.50			
" " 1860	5	80			
Norway	12	25			
* Oldenburg, 1862	5	20			
* Orange Free State	4	15			
Parma	2	18			
* Persia, 1885	4	70			
* Philippine Islands	3	30			

Those marked (*) are unused.

USED CANADIAN STAMPS BY THE DOZEN. 1868-75.

	Per doz.
1 Cent, yellow	5
2 " green	7
3 " " green	4
5 " vermilion	15
6 " grey	10
8 " brown	18
10 " rose	18
Registration Stamps.	
2 Cents, vermilion	10
5 " green	30
Post Cards.	
1 Cent, blue	10

Collections of Stamps for Sale.

HENRY HECHLER'S

CATALOGUE AND PRICE LIST

OF

FOREIGN AND PROVINCIAL POSTAGE STAMPS,

CARDS, ENVELOPES, ETC.

		Un- used	Used			
ALSACE AND LORRAINE.				1878-80. News wrappers.		
1	Centime, rect.	green	4	1	Centavo red 5 4	
2	" "	brown	2	AUSTRIA.		
4	" "	grey	3	1850.		
5	" "	emerald-green	4	3	Kreuzer, rect. red 2	
10	" "	light brown	5	6	" " brown 3	
20	" "	blue	6	9	" " blue 2	
25	" "	dark brown	8	1858.		
ALWUR.				15	Kreuzer, rect. blue 2	
¼	Anna, oblong	blue	8	1861.		
ANGOLA.				15	Kreuzer, oval blue 3	
5	Reis, rect.	black	5	1863.		
10	" "	yellow	10	5	Kreuzer, oval rose 2	
ANTIGUA.				10	10	" " blue 2
1d.	rect.	lake	10	15	" " cinnamon 2	
1d.	" "	brick-red	4	1867.		
ANTIOQUIA				50	Kreuzer, rect—large flesh 15	
1874.				1850. Journal Stamp, Arms.		
1	Centavo, rect.	green	10	1	Kreuzer, square blue 2	
20	" "	brown	30	1863. Newspaper Stamp.		
50	" "	blue	75	1	Kreuzer, rect. lavender 2 2	
2	Peso "	yellow	350	½	Kreuzer blue 3	
1875.				AUSTRIAN ITALY.		
1	Centavo, rect.	black on green	5	1850.		
1	" "	black on white	5	5	Cents, rect. yellow 15	
ARGENTINE REPUBLIC.				5	" " orange 10	
1862. Arms.				10	" " black 10	
5	Centavos, rect.	red	4	15	" " red 3	
10	" "	green	5	30	" " brown 2	
15	" "	blue	6	45	" " blue 2	
1864. Head in oval.				1858.		
5	" "	pale red	5	5	Soldi, rect. red 5	
5	" "	deep carmine	6	AZORES.		
10	" "	green	8	1871-79.		
15	" "	blue	10	5	Reis, rect. black 5	
1867-73. Head.				10	25	" " pink 2
1	" "	purple	2	1880.		
4	" "	brown	4	25	Reis, rect. pale blue 6	
5	" "	red	4	25	" " lilac 5	
10	" "	green	6	1876. Journal Stamp.		
1877-78.				2½	Reis, rect. drab 2	
2	Centavos, rect.	green	5	BADEN. See list of sets.		
8	" "	lake	4	BAHAMAS.		
16	" "	green	8	1d	rect carmine 5	

		Un- used	Used		
BARBADOES.				BOLIVIA.	
1852.				1871.	
1d. rect.	.	blue	5	5 Centavos, rect.	green 15 10
4d. "	.	rose	10	BOSNIA AND HERZEGOVINA.	
1862-78.				1879.	
½d. rect.	.	pale green	4	1 Kreuzer, rect.	grey 2
1d. "	.	blue	2	2 " " "	yellow 4
1d. "	.	pale blue	3	3 " " "	green 6
4d. "	.	vermillion	4	BRAZIL.	
6d. "	.	orange	5	1850.	
1s. "	.	violet	19	30 Reis, oblong	black 4
BAVARIA.				60 "	" 6
1862.				1866.	
12 Kreuzer, square	.	green	10	10 Reis, rect.	red 2 2
1870-74.				20 " " "	lilac 4 2
1 Kreuzer, rect.	.	green	2	50 " " "	blue 6 2
3 " " "	.	rose	3	80 " " "	lilac 4 4
7 " " "	.	ultramarine	4	100 " " "	green 6 5
8 " " "	.	reddish-brown	4	200 " " "	black 10 6
10 " " "	.	buff	5	500 " " "	orange 30 20
18 " " "	.	red	5 4	1878.	
Unpaid Letter Stamp.				10 Reis, rect.	red 2 1
1 Kreuzer,	.	white	2	20 " " "	purple 4 2
BELGIUM.				50 " " "	blue 10 3
1870.				80 " " "	lake 4 1
1 Centime, rect.	.	green	2	100 " " "	green 10 1
1870-77.				200 " " "	black 10 10
10 Centimes, rect.	.	green	2	300 " " "	green and yellow 50 25
25 " " "	.	bistre	2	300 " " "	bistre-yellow 20 20
BERGEDORF.				260 " " "	brown 15 10
½ Schilling, square	.	indigo	6	1880. Post Cards.	
1 " " "	.	white	2	20 Reis	lilac 6
1½ " " "	.	yellow	4	50 " "	blue 12
3 " " "	.	rose	4	80 " Postal Union Cards	bistre 15
4 " " "	.	light brown	6	Envelopes.	
BERMUDA.				100 Reis, oblong	green 12
½d. rect.	.	drab	4	200 " "	black 20
1d. "	.	rose	5 2	BREMEN.	
2d. "	.	blue	4	1855.	
3d. "	.	buff	6	3 Grote	blue 5
4d. "	.	orange	12	5 " "	rose 6
6d. "	.	lilac	6	7 " "	yellow 10
1s. "	.	green	10	5 Silber Groschen	green 12
1880. Post Cards.				1864.	
½d. "	.	brown	4	2 Grose	orange 6
1½d. "	.	brown and rose	8	10 " "	black 12
BHOPAUL.				BRITISH COLUMBIA.	
½ Anna, large square	.	black	20	1861.	
½ Anna, rect.	.	green	8	3d. rect.	blue 25
½ " " "	.	red	10	BRITISH GUIANA.	
BOLIVAR.				1860.	
1872.				2 Cents	orange 5
10 Centavos, rect.	.	mauve	30	1876.	
1874-77.				1 Cent	grey 5 2
5 Centavos, rect.	.	blue	35	2 " "	orange 2 2
1880.				4 " "	blue 3 3
5 Centavos, rect.	.	blue	15	8 " "	carmine 5 5

HENRY HECHLER'S RETAIL PRICE LIST.

		Un-used	Used		
	Post Card.			Post Cards	
3 Cents	carmine on buff	8		1 Cent.	blue 2 1
	BRITISH HONDURAS.			2 " (1877)	green 15
	1866-72.			2 "	green 5
1d. rect.	blue	5		Newsband.	
	BRUNSWICK.			1 Cent, oval	blue 3 2
	1853-57.			CAPE OF GOOD HOPE.	
1/4 (ute Groschen, square	brown	2		1853.	
1/4 Silber Groschen, oblong	green	4		1d. Triangular	red 12
	1865.			4d. "	blue 25 10
1/4 Silber Groschen, oval	black	5		1864-76.	
1 " "	rose	2		1d. rect.	rose 2
2 " "	blue	2		4d. "	blue 3
3 " "	brown	2		1871-80.	
	BULGARIA.			3d. rect. surcharged	blue 6
	1879.			3d. " " in words	rose 8
5 Centimes, rect.	black and yellow	7		CAPE VERD ISLANDS.	
	CANADA.			1877.	
	1856.			5 Reis, rect.	black 4
3d. oblong	vermilion	15		10 " "	yellow 6
1 Cent, rect.	rose	4		CASHMERE.	
3 " oblong	vermilion	4		1867.	
10 " rect.	dark purple	10		3 Pies, rect.	black 8
10 " "	purple	25		6 " "	blue 15
12 1/2 " "	green	10		1875.	
	1868.			1/4 Anna, rect.	red 8
1 Cent, rect. large	red-brown	4		1880.	
1 " "	orange	4		1/4 Anna,	red 8
2 " "	green	5		CHILL.	
3 " "	red	2		1877.	
6 " "	brown	4		1 Centavo, rect.	black 4 2
12 1/2 " "	blue	15		2 " "	orange 4 2
15 " "	rose-lilac	30	25	5 " "	lake 3
15 " "	deep lilac	25	15	CEYLON.	
	1868-75.			1872-80.	
1/4 Cent, small rect.	black	1	1	2 Cents, rect.	light brown 4
1 " "	orange	2	1	1872-77. Envelopes.	
2 " "	green	2	1	4 Cents, oval	pale blue 8
3 " "	rose	3	3	1879. Newsband.	
3 " "	vermilion	4	1	2 Cents, long rect.	brown 4
5 " large rect.	grey	15	15	1878-80. Post Cards.	
5 " small rect.	grey	6	3	2 Cent,	maure 4
10 " "	rose	12	5	CHINA.	
	1875. Registration Stamps.			1878.	
2 Cent, oblong	vermilion	3	2	1 Candarin, rect.	green 8
5 " "	green	8	4	3 " "	red 12
8 " "	blue	30	25	5 " "	yellow 20
	Envelope Stamps.			CONFEDERATE STATES.	
1 Cent, oval	blue	3	3	1861.	
3 " "	vermilion	6	4	5 Cents, large, rect	green 60
	1880. Official Circulars.			1863.	
1 Cent, oval	blue	5	4	2 Cents, rect.	red 10
				5 " "	blue 5
				10 " "	blue 6
				20 " "	green 6

		Un-used	Used		
COSTA RICA.				1879.	
				5 C. de peseta, rect.	black 8
1	Real, rect.	blue	8	12½ " " "	carmine 10
1	Peso " "	yellow	35	25 " " "	blue 5
2	Reals " "	vermillion	10	1880.	
4	" " "	green	25	5 C. de peseta, rect.	green 6
CUBA AND PORTO RICO.				12½ " " "	cinnamon 10
				25 " " "	blue 5
				50 " " "	brown 8
1855.				1881.	
1	Real plata, rect.	blue	10	1 C. de peso	green 5
1	" " "	green	10	2½ " " "	bistre 10
2	" " "	red	15	5 " " "	blue 5
				10 " " "	red-brown 6
1856.				CURACAO.	
1	Real plata, rect.	blue	6	1871-78.	
1	" " "	yellow-green	20	2½ Cents, rect.	green 4
2	" " "	red	15	3 " " "	buff 6
				5 " " "	scarlet 8
1857.				10 " " "	blue 4
1	Real plata, rect.	blue	4	25 " " "	dull orange 5
1	" " "	green	15	50 " " "	violet 6
2	" " "	green	12	Post Cards.	
		red	10	7½ Cents, surch on 12½c.	black on orange 12
1864.				CYPRUS.	
1	Real plata, rect.	green	5	1880.	
1	" (printed on rose paper)	green	25	1d. oblong	rose 5
1	" " "	blue	8	1d. rect.	red 6
1866.				2½d. " "	pink 10
10	Centesimos, rect.	blue	15	Post Card.	
1867.				1d.	brown on buff 6
10	Centesimos, rect.	blue	15	DANUBE STEAM PACKET COMPANY.	
40	" " "	rose	25	10 Soldi, oblong	mauve 8
1868.				10 " "	green 10
8	Centesimos, rect.	lilac	10	10 " "	vermillion 8
10	" " "	blue	15	17 " "	vermillion 12
1869.				DECCAN.	
10	Centesimos, rect.	brown	5	1868.	
20	" " "	orange	6	1 Anna, oblong	sea-green 25
1870.				1871.	
10	Centesimos, rect.	green	15	1 Anna, rect.	brown-red 6
20	" " "	brown	8	1873.	
1871.				1 Anna, rect. surcharged	brown-red 10
25	C. de peseta, rect.	blue	12	DENMARK.	
50	" " "	green	25	1864.	
1873. Cuba only.				8 Skillings, large rect.	light-brown 10
25	C. de peseta, rect.	lilac	8	10 " " "	grey
50	" " "	brown	25	See list of sets.	
1874.				DOMINICAN REPUBLIC.	
50	C. de peseta, rect.	violet	6	1880.	
1875.				1c. rect.	green 5
25	C. de peseta, rect.	blue	4	2c. " "	orange 8
50	" " "	green	20	1880. Post Cards.	
1876.				2c.	green 8
25	C. de peseta, rect.	mauve	4	3c.	red 10
50	" " "	blue	6	1881. Union Postal Cards.	
1878.				2 Centavos	green on green 6
12½	C. de peseta, rect.	brown	8	3 " "	pink on pink 10
25	" " "	yellow-green	5		
50	" " "	dark green	5		

HENRY HECHLER'S RETAIL PRICE LIST.

		Un- used	Used				
	DOMINICA.				1 Piastre oblong	rose	2
	1874-80.				2 " "	orange	6
					5 " "	green	10
1d. rect.		olive	5		Post Cards.		
1d. " "		lavender	6	20 Paras		brown	6
	DUTCH INDIES.				FALKLAND ISLES.		
	1864.	crimson	25	1d. rect.		claret	6
10 Cent, rect.-	1869.	light-brown	6		FERNANDO PO.		
10 Cents, rect.		blue	3		1880.		
20 " "		carmine	5	5 C. de peseta		green	10
50 " "			5	10 " "		carmine	13
	1874-75.	greenish grey	3	50 " "		blue	30
1 Cent, " "		lilac	5		FIJI ISLANDS.		
2 Cents, " "		yellow	5	2d. rect.		blue	25
2 1/2 " "		violet	4		FINLAND.		
25 Cents, rect.	Envelope Uncut.		4		1866.		
10 Cents,	Unpaid Letter Stamp.	buff	10	20 Pennia, rect.		blue	3
15 Cents,	orange on yellow		15		1875.		
	Post Cards.			2 Pennia, rect.		grey	3
5 Cents,		mauve	4	5 " "		orange	3
5 " "		purple	5	20 " "		blue	2
	ECUADOR.				FRANCE.		
	1865-66.	b'ue	12		1849.		
1/2 Real, rect.	1872.	blue	12	25 Centimes, rect.		blue	5
1/2 Real, rect.		orange	6		1852.		
1 " "		yellow	10	25 Centimes, rect.		blue	8
1 " "	EGYPT.				1853.		
	1880	green	12	5 Centimes, rect.		light green	3
5 Paras, rect.		lilac	10	20 " "		blue	2
1 Piastre, rect.	1867.	yellow	6	40 " "		orange	2
		mauve	6	80 " "		rose	4
5 Paras, rect.		green	6		1863.		
10 " "		vermilion	6	1 Centimes, rect.		dark-green	3
20 " "			6	4 " "		grey	3
1 Piastre, rect.	1872-75.	brown	5		1870-71.		
		mauve	3	1 Centime, rect.		olive-green	3
5 Paras, oblong		blue	4	5 " "		green	2
10 " "		pale blue	4	10 " "		brown on rose	2
20 Piastre, oblong		red	4	15 " "		bistre	2
1 " "		rose	5	25 " "		blue	2
1 " "		yellow	6	40 " "		vermillion	2
2 " "		purple	5		1874.		
2 1/2 " "		green	10	30 Centimes, rect.		brown	3
5 " "	Error. Centre Reversed		6	80 " "		rose	5
	1878. Provisional Issue.				1876.		
5 Paras, oblong	on 2 1/2 piastre,	mauve	10	5 Centimes, rect.		green	2
10 " "	" "	mauve	12	15 " "		grey	2
	1879.			20 " "		red-brown	2
5 Paras, oblong		brown	2	25 " "		blue	2
10 " "		mauve	2	30 " "		brown	2
20 " "		blue	4	1 Franc, rect.		sage-green	5
				5 " "		lilac	12

		Un-used	Used		
1877-80.				Official Stamps.	
10 Centimes, rect.	black	2	1/4 Groschen,	black & slate	2
15 " "	blue	2	1/2 " "	" "	2
25 " "	black on brick-red	2	1 " "	" "	4
25 " "	straw	2	2 " "	" "	4
FRENCH COLONIES.				1 Kreuzer	
1860.				2 " "	
1 Centime, square	olive-green	5	3 " "	" "	5
5 Centimes, "	emerald-green	10	7 " "	" "	5
10 " "	cinnamon		GOLD COAST.		
40 " "	vermilion		1/2d. rect.	olive	4
1873-77.				1d. " "	
1 Centime, rect.	olive-green	4	2d. " "	blue	6
5 Centimes, "	green	4		green	10
30 " "	brown	5	GRANADA CONFEDERATION.		
Large figures of value.				1868.	
10 Centimes, rect.	brown on rose	15	10 Centavos, rect.	mauve	20
1877-78.				20 " " "	
1 Centime, "	green	2	25 " " "	black on blue	60
1 " " "	black	4	1 Peco	red	150
2 " " "	green	4	1871-75.		
4 " " "	purple	6	1 Centavo, rect.	green	5
5 " " "	green	5	1 " " "	rose	5
10 " " "	green	10	1876-77.		
15 " " "	blue	8	10 Centavos rect.	brown	5
20 " " "	red-brown	10	20 " " "	blue	10
25 " " "	straw		GREAT BRITAIN.		
25 " " "	blue		1840-47.		
35 " " "	black on yellow		1d. rect.	red-brown on blue	2
1 Franc	sage-green		2d. " "	blue	2
Post Cards.				6d. oct.	
15 Centimes	blue	10	1s. " "	violet	15
GAMBIA.				1s. " "	
Halfpenny, 1 set.	yellow	6	1s.	green	4
One penny " "	dull pink	8	1862.		
GERMANY.				3d. rect.	
1874-77.				1s. " "	
3 Pfennige, rect.	green	1	Envelopes.		
5 " " "	violet	1	1860-77.		
10 " " "	rose	1	1d. oval	pink	6
20 " " "	blue	2	1878. Registered		
25 " " "	brown	3	2d.	blue	12
50 " " "	slate	4	Bands for Printed Matter.		
50 " " "	green	4	1870-78.		
1880.				1/2d. long	
3 Pfennige, rect.	green	1	1d. oval	brown	5
5 " " "	violet	1	1d.	brown	3
10 " " "	rose	1	Post Cards.		
20 " " "	blue	2	1/2d.	brown	3
Newspaper Bands.				1d. Great Britain and Ireland	
3 Pfennige	green	4	GREECE.		
Envelopes.				1 Lepton rect.	
10 Pfennige, rect.	rose	6	2 Lepta, "	black-brown	2
Post Cards.				5 " "	
5 Pfennige,	lilac	0	20 " "	cinnamon	5
10 " "	rose	7		green	2
				blue	2
			See list of sets.		

HENRY HECHLER'S RETAIL PRICE LIST.

Unpaid Letter Stamps.		Un-used	Used		
1 Lepton, rect.	. black & green	2		1 Real	. yellow 30
2 Lepta, rect.	. "	3			
60 "	. "		6	1 Real, rect.	mauve on white 15
GRENADA.				1 " "	carmine on white 25
1860-75-				1/2 " "	mauve on lilac 15
1d. rect.	. green	5		1 " "	carmine on salmon 5
8d. "	. brick-red		6	HELIGOLAND.	
GRIQUALAND.				1/2 Schilling, rect.	rose and green 2
1d. rect.	. grey	4		1/2 " "	" " 4
1d. "	. rose	8	5	1/2 " "	" " 4
4d. "	. blue		5	1 " "	" " 4
GUATEMALA.				1 1/2 " "	" " 5
5 Centavos, rect.	. brown	10		2 " "	" " 4
10 " "	. blue	15		6 " "	" " 10
20 " "	. carmine	25		1/4 " "	error green and red 4
1875.				Envelope.	
1/2 Real, rect.	. black	12	10	10 Pfennige	. rose 6
1/2 " "	. green	15		Newsband.	
1 " "	. blue	30		3 Pfennige	. green 3
2 Reals "	. red	35		5 " "	. mauve 5
1877.				10 " "	. blue 7
1/2 Real, rect.	. green	20		Post Card.	
1879.				5 Pfennige	. green 4
1/2 Real rect.	green & brown	15		HOLLAND.	
1 " "	" "		15	1864.	
Newsband.				5 Cents, rect.	. blue 3
1/2 Real, oval	. black	15		10 " "	. red 3
Post Card.				5 Cents, rect.	. blue 2
1/2 Real	. black	15		10 " "	. rose 2
HAMBURG.				1872-75.	
1/2 Schilling, rect.	. black	3		5 Cents, rect.	. blue 2
1 " "	. brown	4		10 " "	. rose 2
1 1/2 Schillings "	. grey	4		12 1/2 " "	. grey 2
1 1/4 " "	. mauve	5		20 " "	. green 3
2 " "	. red	4		25 " "	. purple 3
2 1/2 " "	. green	4		1877. Newspaper.	
2 1/2 " "	. light-green	5		1 Cent	. rose 2
4 " "	" "	4		1 " "	. green 2
7 " "	. mauve	5		2 " "	. yellow 2
9 " "	. yellow	6		2 1/2 " "	. lilac 2
1866.				HONG KONG.	
1 1/2 Schilling, rect.	. mauve	5		2 Cents, rect.	. brown 6
1 1/4 " "	. rose	5		2 " "	. rose 6
Envelopes Uncut.				HONDURAS.	
1/2 Schilling, rect.	. black	3		1 Centavo, rect.	. purple 4
1 1/4 " "	. rose	5		2 " "	. brown 6
2 " "	. orange	6		HUNGARY.	
3 " "	. light-blue	8		5 Kreuzer, rect.	. carmine 2
4 " "	. green	10		See list of sets.	
HANOVER. See list of sets.					

		Un-used	Used			
				1864. Unpaid Letter Stamps.		
ICELAND.				10	Centesimi, oval . . . yellow	10
10	Ore, rect.	. . .	carminé	10	" " . . . orange	10
20	"	. . .	mauve	1869.		
				10	Centesimi, oblong . . . brown	4
1876.				1869.		
5	Ore, rect.	. . .	blue	1	Centesimi, oblong buff and magenta	2
5	"	. . .	drab	2	" " " "	2
				5	" " " "	2
INDIA.				10	" " " "	2
1858.				30	Centesimi, oblong " "	5
1/2	Anna, rect.	. . .	blue	40	" " " "	5
1	"	. . .	yellow	50	" " " "	6
See sets.				60	" " " "	10
Newspaper Stamps.				1	Lira blue and brown	5
9	Pies, rect.	. . .	lilac	2	Lira " "	5
Envelope Stamps.				5	" " " "	25
1/2	Anna, circular	. . .	blue	10	" " " "	15
ITALY.				1875. Official Stamps.		
1851.				2	Centesimi . . . olaret	4
5	Centesimi	. . .	black	5	" " " "	4
20	"	. . .	blue	20	" " " "	4
40	"	. . .	red	30	" " " "	10
				1	Lira . . . " "	12
1853.				2	Lira . . . " "	25
20	Centesimi	. . .	blue	5	" " " "	25
				10	" " " "	30
1856.				1878. Surcharged, oblong.		
5	Centesimi, rect.	. . .	dark-green	2	Centesimi, on official 0.02, olaret	5
5	" " "	. . .	green	2	" " " 0.05, " "	5
10	" " "	. . .	oistre-yellow	2	" " " 0.20, " "	5
10	" " "	. . .	brown	2	" " " 0.30, " "	5
10	" " "	. . .	bistre	2	" " " 1.00, " "	5
15	" " "	. . .	blue	2	" " " 2.00, " "	5
20	" " "	. . .	blue	2	" " " 5.00, " "	10
30	" " "	. . .	red	2	" " " 10.00, " "	10
3	Lira, " "	. . .	bronze	1863. Newspaper Stamp.		
				1	Centesimi . . . green	2
1863.				2	" " " brown	2
15	Centesimi, rect.	. . .	blue	1875. Official Cards.		
1864.				15	Centesimi, reply . . . green	25
5	Centesimi, rect.	. . .	green	1878. Stamps Surcharged Estero.		
10	" " "	. . .	orange	20	Centesimi, rect. . . orange	6
15	" " "	. . .	blue	Newspaper Stamps.		
20	" " "	. . .	blue	1	Centesimi, rect. . . green	3
20	" " "	. . .	chocolate	2	" " " brown	4
40	" " "	. . .	rose	JAMAICA.		
60	" " "	. . .	lilac	1/2d. rect.	. . . mauve	4
2	Lira, " "	. . .	scarlet	1d. " "	. . . blue	2
				2d. " "	. . . rose	2
1866.				3d. " "	. . . green	4
20	Centesimi, rect.	. . .	blue	4d. " "	. . . orange	2
1877.				6d. " "	. . . lilac	5
20	Centesimi	. . .	blue	1s. " "	. . . brown	8
20	"	. . .	orange	1877. Post Cards, Provisional.		
1879.				1/2d.	blue and red on white	35
5	Centesimi, rect.	. . .	green	3d.	" " "	75
10	" " "	. . .	rose			
20	" " "	. . .	orange			
25	" " "	. . .	blue			
30	" " "	. . .	brown			
50	" " "	. . .	purple			
2	Lira	. . .	vermillion			

HENRY HECHLER'S RETAIL PRICE LIST.

		Un-	Used		
1877-79. Post Cards.				LUXEMBURG.	
½d.	.	brown	5	1866-77.	
1d.	.	blue	6	1 Centime, rect.	. . orange 5
1½d.	.	black & green	10	1 "	. . brown 2
JAPAN.				2 "	. . black 3
1873.				5 "	. . yellow 2
¼ Sen, rect.	.	brown	5	10 "	. . mauve 3
1875.				20 "	. . brown 5
¼ Sen, rect.	.	grey	5	25 "	. . blue 3
1876-79.				1875-77. Surcharged Official.	
5 Rin, rect.	.	slate	5	1 Centime, rect.	. . yellow 5
1880.				2 "	. . black 5
1 Sen, rect.	.	chocolate	4	10 "	. . lilac 3
2 "	.	mauve	6	20 "	. . brown 5
Newsband.				25 "	. . blue 6
¼ Sen, oval	.	red	5	30 "	. . mauve 6
Envelopes.				MADEIRA.	
1 Sen	.	blue	6	1871-79.	
Post Cards.				5 Reis, rect.	. . black 4
¼ Sen, circular	.	orange	6	Journal Stamp.	
1 "	.	blue	6	2½ Reis, rect.	. . drab 3
5 Rin, oval	.	yellow	5	MALTA.	
1 Sen, oval	.	blue	5	½d. rect.	. . orange 5
JHEEND.				MAURITIUS.	
1876.				1860-72.	
½ Anna, rect.	.	blue	5	2d. rect.	. . blue 10
LABUAN.				4d. "	. . rose 15
2 Cents, rect.	.	green	10	5 Shilling, rect.	. . brown-lilac 25
LAGOS.				5 "	. . mauve 25
1d. rect.	.	lilac	5	1876-67. Provisional.	
LA GUAIRA				½d. on 9d.	. . lilac 5
1864.				½d. on 10d.	. . red-brown 5
¼ Real, rect.	.	rose	12	½d. on 10d.	. . dull-rose 5
1869.				1d. on 4d.	. . rose 8
2 Real	.	rose	12	1 Shill. on 5 Shill.	. . mauve 25
THE LEVANT				1 "	. . brown-lilac 25
1 Kopec, rect.	.	black and yellow	4	1878. Surcharged.	
2 "	.	black and rose	6	2 Cents, rect.	. . dull rose 5
LIVONIA.				4 "	. . brown 6
1860.				1879-80	
2 Kopocs, circular	.	blue	25	4 Cents, rect.	. . orange 8
1879.				Post Cards.	
2 Kopocs, rect.	.	red and green	5	2 Cents	brown on buff 6
LUBECK.				MECKLENBURG SCHWERIN.	
1859.				1860. Envelopes.	
¼ Schilling, rect.	.	violet	3	1 Shilling, oval	. . red 5
1 "	.	yellow	10	2 "	. . lilac 10
2 "	.	brown	4	3 "	. . yellow 10
2½ "	.	rose	6	MECKLENBURG STRELITZ.	
4 "	.	green	4	1864.	
1863-65.				¼ Schilling, rect.	. . orange 5
¼ Schilling, oval	.	green	5	½ "	. . green 5
2 "	.	rose	5	2 Silb. Groschen, rect.	. . blue 5
4 "	.	brown	8	3 "	. . brown 5

		Un-	used	NEW BRUNSWICK,	
		used	used	1857.	
MEXICO.				3d. diamond . . . red 75 25	
1879.				6d. " . . . yellow 250	
1 Centavo, rect.	. . . brown	5		1860-63.	
2 " "	. . . puce	6		1 Cent, oblong	. . . brown 10
5 " "	. . . orange		5	1 " "	. . . mauve 10
10 " "	. . . blue		10	2 " rect.	. . . orange 15
MODENA.				5 " " . . . green 10 8	
1852.				6 " " . . . dark green 15	
5 Cents, rect.	. . . green	6		10 " "	. . . vermilion 20 10
25 " "	. . . yellow	6		12½ " oblong	. . . blue 20
10 " "	. . . blue		10	NEWFOUNDLAND.	
1854.				1857.	
9 Cents	. . . violet	10		8d. rect.	. . . orange 100
9 " (B G)	. . . "		10	1858.	
MONTENEGRO.				1d. square . . . claret 15	
1873.				1d. " . . . brown 10	
2 Soldi, rect.	. . . yellow	10		2d. rect.	. . . claret 25
3 " "	. . . green	10		3d. triangular	. . . green 25
MONTEVIDEO.				4d. rect. . . . claret 30	
1877.				5d. square . . . brown-violet 75	
1 Centesimo, rect.	. . . brown	5		5d. " . . . claret 40	
5 " "	. . . green		6	6d. rect. . . . " 45	
10 " "	. . . red		10	6½d. " . . . " 50	
1881.				8d. " . . . " 50	
1 Centesimo	. . . brown	5		1s. " . . . " 75	
1879. Newsband.				1865.	
1 Centesimo, oval	. . . red	5		1 Cent, rect.	. . . mauve 10
MONTERRAT.				1 " " . . . brown-violet 5 5	
1876.				2 " oblong . . . green 6 5	
1d. rect.	. . . carmine	5		3 " rect.	. . . red 15
MOZAMBIQUE.				3 " " . . . blue 6 3	
5 Reis, rect.	. . . black	6		5 " oblong . . . black 20	
10 " "	. . . yellow	10		5 " " . . . blue 16 8	
NATAL.				6 " rect. . . . rose 12 6	
1868-76.				10 " " . . . black 18 10	
1d. rect.	. . . red	6		12 " round . . . red-brown 20	
3d. " "	. . . blue	5		13 " oblong . . . yellow 25	
6d. " "	. . . mauve	6		24 " square . . . blue 40	
1d. " "	. . . lake	6		1880.	
1d. " "	. . . red		10	1 Cent, rect.	. . . mauve 5 4
1874.				2 " oblong . . . green 5 4	
1d. rect.	. . . rose	2		3 " rect. . . . blue 6 4	
6d. " "	. . . mauve	5		5 " oblong . . . blue 10 6	
1877-79.				1873. Post Cards,	
½d.—1d. surcharged	. . . rose	6		1 Cent	. . . green 6
½d.—1d. " "	. . . yellow	10		1879.	
1d.—6d. " "	. . . mauve		10	2 Cents	. . . scarlet 25
1d.—6d. " "	. . . rose		10	1880.	
1d. " "	. . . brown		5	1 Cent	. . . green 4
1d.—3d. double surchd	. . . "		25	2 " "	. . . vermilion 6
1880.				NEW SOUTH WALES.	
blue-green 5				1851.	
NEVIS.				2d. rect. . . . blue 10	
1871.				1855.	
1d. rect.	. . . lake	6		1d. rect.	. . . red 8
1880.				2d. " . . . blue 8	
1d. rect.	. . . mauve	6		2d. " (twopence at side)	. . . blue 2
				3d. " . . . green 3	

HENRY HECHLER'S RETAIL PRICE LIST.

		Un-used	Used				
1d. rect.	1864.			2			
4d. rect.	1867-76.	red-brown		3			
6d. "		lilac		4			
NEW ZEALAND.							
2d. rect.	186c-67.	blue		6			
6d. "		reddish-brown		6			
1d. rect.	1871.	brown		4			
2d. "		vermilion		4			
4d. rect.	1873-78.	rose		2			
1d. "		lilac		2			
2d. "		pink		2			
4d. "		marone		4			
6d. "		blue		3			
NICARAGUA.							
1 Centavo, oblong	1861-70.	brown	6	6			
2 " "		blue	10	8			
5 " "		black		8			
Post Cards.							
2 Centavos		brown	7				
NORWAY.							
4 Skillings, rect.	1856.	blue		4			
1 Ore, rect.		drab	4				
2 Krona "		carmine and purple	25				
See in list of sets.							
LOCALS. 1878							
Christiansund.							
4 Ore, rect.		ultramarine	3				
7 " "		solferino	8				
10 " "		green	10				
1879. Throudhjam by Post.							
2 Oro, rect.		black and purple	5				
4 " "		red and buff	8				
8 " "		green and buff	10				
1880. Christiansund.							
1 Ore, rect.		cerise and black	2				
2 " "		purple and black	3				
Post Card.							
2 Ore		ultramarine	5				
NOVA SCOTIA. 1857.							
1d. square		red-brown	75				
3d. "		blue	30	25			
6d. "		green	125	75			
1860-62.							
1 Cent, rect.		black	15	10			
1 " "		mauve	15	15			
5 " "		blue	15	8			
8 1/2 " "		green		100			
10 " "		red	30	20			
12 1/2 " "		black	30	25			
NOWANUGGER (INDIA).							
1/2 Anna, small rect.		blue	5				
OLDENBURG.							
1862.							
1/2 Groschen, oval		green	5				
1 " "		orange	5				
1 " "		rose	5				
2 " "		blue	5				
3 " "		brown	10				
ORANGE FREE STATE.							
1868.							
1d. rect.		brown	6				
6d. "		rose	5				
1s. "		orange	10				
1877. Provisional.							
4d. rect., on 6d.		rose	10				
1878.							
4d. rect.		blue	5				
PANAMA.							
1878.							
5 Centavos, rect.		green	15				
20 " "		blue	25				
PARAGUARY.							
1870.							
1 Real, rect.		rose	35				
1875.							
5 Centavos, rect.		yellow	20				
1857.							
PARMA.							
5 Centes, rect.		black on yellow	10				
15 " "		black on rose	10				
PERSIA.							
1875.							
1 Shahi, rect.		black	10				
1 Krun "		rose	30				
1876.							
1 Shahi, rect.		mauve	6	5			
2 " "		green	6	6			
1880.							
1 Shubi, rect.		border red	5				
2 " "		yellow	10				
5 " "		green	15				
10 " "		purple	30				
Envelope Stamps.							
5 Shubi,		rose	20				
Post Cards.							
2 1/2 Shahi		red & black	10				
PERU.							
1859.							
1 Dinero, square		blue	75				
1 Peseta "		red	100				
[1863.							
1 Dinero, square		pink	10				

		Un-used	Used				
				1879.			
5	Centavos, rect.	green	6	5	C. de peseta, rect.	lake	8
10	"	red	6	10	"	drab	10
20	"	brown	15	15	"	black	10
				25	"	blue	12
				50	"	green	8
				1880.			
				1	C. de peseta, rect.	green	10
1	Dinero, square	green	10	1	"	rose	10
1	Peseta	orange	8	1	"	mauve	10
				2	"	drab	10
				3	"	yellow	10
				4	"	black	10
				5	"	green	5
2	Centavos, rect.	violet	6	5	"	carmine	10
50	"	green	25	10	"	cinnamon	15
				15	"	blue	15
				25	"	grey	25
				40	"	brown	25
				50	"	drab	35
1	Centavo, rect.	yellow	5	1	Peseta	"	75
5	"	blue	5	2	Peseta Y Telegs (Arms)	"	
10	"	green	6	1881.			
20	"	carmine	12	1/2	Milla de Peso	carmine	4
				1	"	purple	4
				2	"	rose	5
				4	"	light green	5
				6	"	mauve	6
				8	"	ultramarine	8
				1	C. de Peso	green	5
1	Centavo, rect.	green	3	2	"	carmine	8
2	"	carmine	6	3	"	brown	12
5	"	ultramarine	10	5	"	blue	15
50	"	green	25	8	"	red-brown	20
				10	"	grey	24
				1	Pesta	mauve	30
				PORTUGAL.			
				1853.			
5	Centavos	red	12	25	Reis	blue	10
10	"	orange	10				
20	"	blue	50	1855.			
50	"	brown	35	5	Reis	brown	6
				25	"	rose	4
				1862.			
1	Centavo	yellow-brown	6	5	Reis	brown	6
				25	"	rose	4
				1866.			
				5	Reis	black	3
				10	"	yellow	5
				20	"	bistre	
				5	"	pink	
				1870-80.			
				5	Reis	black	3
				10	"	yellow	3
				10	"	green	3
				15	"	fawn	3
				20	"	bistre	2
				25	"	pink	3
				50	"	green	3
				100	"	li ao	5
				Journal Stamp.			
				2 1/2	Reis	dull green	1

HENRY HECHLER'S RETAIL PRICE LIST.

		Un-	Used				
PRINCE EDWARD ISLAND.							
1860.							
1d. rect.	orange	10	15	2 Bajocchi, rect.	yellow	15	10
2d. "	rose	5	5	3 "	dark green	15	
3d. "	blue	6	5	4 "	red brown	15	10
6d. "	green	12	10	5 "	lilac	18	25
9d. "	lilac	15	15	6 "	green	18	
1869.							
4d. "	black	12	8	8 "	rose	18	
1870.							
4d. "	brown	12	10	20 "	blue	25	
1872.							
1 Cent.	yellow	6	4	ROMAN STATES.			
1 "	orange	4	4	½ Bajocchi, oval	grey	5	
2 "	blue	5	3	2 "	oblong	yellow-green	3
3 "	pink	6	5	5 "	rect.	rose	3
4 "	green	8	4	1 Scudo	"	red	60
6 "	black	10	4	1867.			
12 "	lilac	11	10	2 Cents, oblong	green	3	
PORTUGUESE INDIES.							
1876.							
10 Reis, rect.	black	6		10 "	perforat.	vermillion	3
15 " "	rose	10		20 "	circular	solferino	5
1877-80.							
5 Reis	black	5		10 "	unperf.	vermillion	5
10 Reis	yellow	10		20 "	"	solferino	6
PRUSSIA.							
1850							
4 Pfennige, rect.	green	4		80 "	perforat.	rose	12
6 "	red-brown	4		ROUMANIA.			
1 Silber Gros., rect	lake	8	3	1865.			
2 "	blue	8	3	2 Paras	orange	7	
3 "	yellow	8		5 "	blue	8	5
1858.							
1 Silber Gros. rect.	rose	3		20 "	carmine	12	6
1861-64.							
1 Silber Gros., oval	rose	2	2	1866.			
2 "	blue	2	2	2 Paras	yellow	6	5
3 "	stone	2	2	5 "	blue	10	
QUEENSLAND.							
1861.							
1d. rect.	vermillion	6		20 "	deep rose	20	
2d. "	blue	4		1871-77.			
4d. "	yellow	6		1½ Bani, rect.	olive green	4	
6d. "	green	5		1½ "	triangular	emerald green	10
1s. "	purple	10		5 "	rect.	cinnamon	2
1879.							
1d. "	red	2		10 "	"	clear blue	2
2d. "	blue	2		10 "	"	indigo	2
ROMAGNA.							
1859							
½ Bajocchi, rect.	lemon	25		15 "	"	red brown	2
1 "	grey	15		25 "	"	orange	3
				1878-79.			
				1½ Bani, rect.			
				5 "			
				10 "			
				10 "			
				30 "			
				red			
				1879-80			
				1½ Bani, rect.			
				3 "			
				5 "			
				5 "			
				10 "			
				15 "			
				25 "			
				blue			
				Journal Stamps.			
				1870-71.			
				1½ Bani,			
				blue and yellow			
				5			
				RUSSIA. See list of sets.			
				ST. CHRISTOPHER.			
				1870-79.			
				1d. rect.			
				rose			
				5			
				6d. "			
				green			
				8			

HENRY HECHLER'S RETAIL PRICE LIST.

		Un-used	Used
SPAIN.			
	1855.		
1 Real	blue	10	
	1860.		
1 Real, rect.	blue	10	
2 " "	lilac	8	
	1862.		
1 Real, rect.	brown on yellow	12	
	1864.		
1 Real	brown on blue	9	
	1870-72.		
50 Vil, de esc.	blue	5	
1 Escudo, 600 Mil.	lilac	50	15
2 " "	blue	75	25
	1872-77.		
2 Cents de Peseta	mauve	5	
2 " "	rod violet	15	
	1872.		
4 Peseta, rect.	buff	50	15
10 " "	green	1.25	25
	1872.		
4 Peseta, rect.	brown	1.00	15
10 " "	brown violet	1.50	25
	1874.		
4 Peseta, rect.	erimson	1.00	20
10 " "	black	2.00	75
	1875.		
2 Cents de peseta rect.	cinnamon	3	
4 Pesta	green	25	
10 " "	pale blue	75	
	1876.		
10 Cent de peseta. rect.	blue	5	3
25 " "	dark brown	3	3
4 Peseta, rect.	puce	25	
10 " "	vermillion	35	
	1878.		
2 Cent de peseta rect.	lilac	5	
10 " " "	dark drab	5	
25 " " "	bistre	3	
4 Peseta	mauve	50	
10 " " "	blue	2.00	80
	1879.		
2 Centimes, rect	black	5	
5 " " "	green	4	
10 " " "	rose	3	
25 " " "	blue	2	
50 " " "	drab	10	
Head of Don Carlos.			
1 Real, rect	dull rose	25	
10 Maravedis, rect	rose	25	
1 Real, " "	brown	10	
10 Cents " "	green	10	

1873. War Tax.			
C. de peseta, rect.	black		4
	1876-77.		
15 C. de peseta, rect.	claret		4
Official Stamps, 1854.			
1/2 Anna, rect.	orange	3	
1 " "	rose	3	
4 " "	green	3	
1 Libra, rect.	blue	5	
	1855.		
1/2 Anna, oval	ye'low	3	
1 " "	rose	3	
4 " "	green	3	
1 Libra, oval	blue	5	
SURINAM.			
2 1/2 Cents, rect.	scarlet	4	
3 " "	green	5	
10 " "	buff		6
SWEDEN.			
1872.			
3 Ore, rect.	brown		2
6 " "	lilac		2
6 " "	mauve		2
12 " "	blue		1
20 " "	red		2
24 " "	orange		2
30 " "	brown		2
30 " "	rose		2
Unpaid Letter Stamps.			
1 Ore, rect.	black		3
SWITZERLAND.			
1850-52.			
5 Rap. (Rayon I.)	blue		8
10 " (" II.)	yellow		6
1855.			
5 Rappen, rect.	brown		3
10 " "	blue		3
15 " "	rose		3
20 " "	yellow		3
1862-78.			
2 Centimes, rect.	bistre	2	2
3 " "	black	3	2
See sets.			
Unpaid Letter Stamps.			
1 Centime, rect.	blue		2
2 " "	"		2
3 " "	"		3
5 " "	"		2
See sets.			
Private Stamps. Belalp.			
5 Centimo	green		2
5 " "	rose		2

		Un-used	Used			
TASMANIA.				1876-80.		
Vanuaniemen's Land.				20 Paras, rect.	black & rose	6
[1858-63.				1876. Unpaid Letter Stamps, value surchd.		
1d. rect.	.	carmine	6	½ Piastre, rect.	violet	5
2d. "	.	green	6	1875. Surcharged Cheir, in blue, Dotted		
4d. "	.	blue	6	Circle.		
TASMANIA.				16 Paras	violet	6
6d. oct.	.	grey	6	1870. Envelopes uncut.		
6d. "	.	lilac	5	1 Piastre, oct.	yellow and black	15
6d. "	.	purple	8	Local, for Constantinople only.		
1s. "	.	red	6	5 Paras	blue	6
1870-79.				20 "	green	6
1d. rect.	.	red	2	40 "	rose	5
2d. "	.	green	2			
3d. "	.	brown	2			
TOBAGO.				TURK'S ISLANDS.		
1879.				1d. rect.	red	5
1d. rect.	.	carmine	6	TUSCANY.		
TOLIMA.				1850.		
1879-80.				4 Crazia, rect.	green	15
5 Centavos, rect.	.	brown	25	1854.		
10 "	.	blue	50	1 Crazia, rect.	carmine	5
5w "	.	green	75	1859.		
1 Peso "	.	red	150	10 Centes, rect.	brown	6
TRANSVAAL REPUBLIC.				See sets.		
1869-72.				TWO SICILIES.		
1d. rect.	.	red	8	1857. Naples.		
1d. "	.	black	25	1 Grano, rect.	lake	6
3d. "	.	lilac	12	2 "	"	6
6d. "	.	blue	10	1861.		
1s. "	.	green	25	½ Tornese, rect.	green	8
THE TRANSVAAL.				¾ Grano, rect.	brown	8
1878. surcharged V. R.				1 "	lake	8
1d. rect.	.	red on amber	6	2 "	blue	6
1d. "	.	red on buff	8	5 "	red	6
1879.				10 "	orange	6
1d. rect.	.	brown	5	20 "	yellow	6
3d. "	.	claret	5	50 "	slate	12
4d. "	.	light-green	8	50 "	blue	20
6d. "	.	black	12			
TRINIDAD.				UNITED STATES.		
1d.	.	carmine	2	1851.		
4d.	.	slate	5	1 Cent, rect.	blue on pink	10
1879.				U. S. P. O. dispatch.		
1d.	.	black & mauve	5	1 Cent. oblong	blue	10
TURKEY.				1851.		
Small Surcharged	.	violet	3	3 Cent, rect.	carmine	5
"	.	purple	3	1861-66		
"	.	green	3	1 Cent, rect.	blue	2
"	.	red	3	2 "	black	2
"	.	yellow	3	3 "	pale-rose	1
Large Surcharged	.	violet	2	5 "	brown	5
"	.	purple	2	10 "	green	5
"	.	green	3	12 "	black	5
"	.	red	2			
"	.	yellow	2			

		Un- used	Used			
	VICTORIA			WESTERN AUSTRALIA.		
	1852.			1865-72.		
3d. rect.	.	blue	26	1d. oblong	.	straw 3
	1864-72.			1d. "	.	yellow 4
4d. rect.	.	rose	3	3d. "	.	salmon 5
	1873-77.			WURTEMBERG.		
2d. rect.	.	mauve	3	1861.		
	VIRGIN ISLES.			3 Kruezer, square	.	ye'low 3
	1866-79.			6 "	.	green 5
1d. rect.	.	green	6	9 "	.	rose 7
	1880.			See sets.		
1d. rect.	.	green	5	1875. Envelopes.		
				5 Pfennige	.	lilac 5

Special Notice.

TERMS :—Net Cash in advance. Remittances must in all cases accompany each order, including sufficient for return postage. As the prices quoted in this list are at such low rates, I am compelled to ask you not to deviate from these rules, otherwise orders will be rejected.

No Stamps taken in Exchange except they are ordered.

Orders for Stamps from Catalogue should be written on a separate paper, with prices enumerated, in which case the same will be returned, duly checked.

Correspondents who may have stamps in quantity which they desire to exchange for stamps named in my Catalogue, by sending large parcels of common used stamps, should order stamps of a similar quality, as I do not undertake to send unused or rare stamps in exchange for such ; or if the selection is left to me I will send good value in such stamps.

Exchange orders should be of double the amount required, to allow for certain stamps, of which my supply is so limited that I am obliged to reserve them for cash orders. Correspondents will then receive what they desire.

Imperfect or soiled specimens are useless. Envelope Stamps to be cut square. Cards must be entire.

I cannot too strongly impress the necessity of securely wrapping parcels intended for me. Insufficiently prepaid letters and packets are refused.

All letters containing money or stamps must be REGISTERED.

I particularly call your attention to my provincial stamps, viz., Newfoundland, P. E. Island, New Brunswick and Nova Scotia.

Parties desiring information concerning the prices given by me for Foreign Stamps will be furnished, on application, with a list of prices I offer in cash or for Exchange.

Correspondence in English, French and German.

All stamps warranted genuine. Stamps not sent on approval.

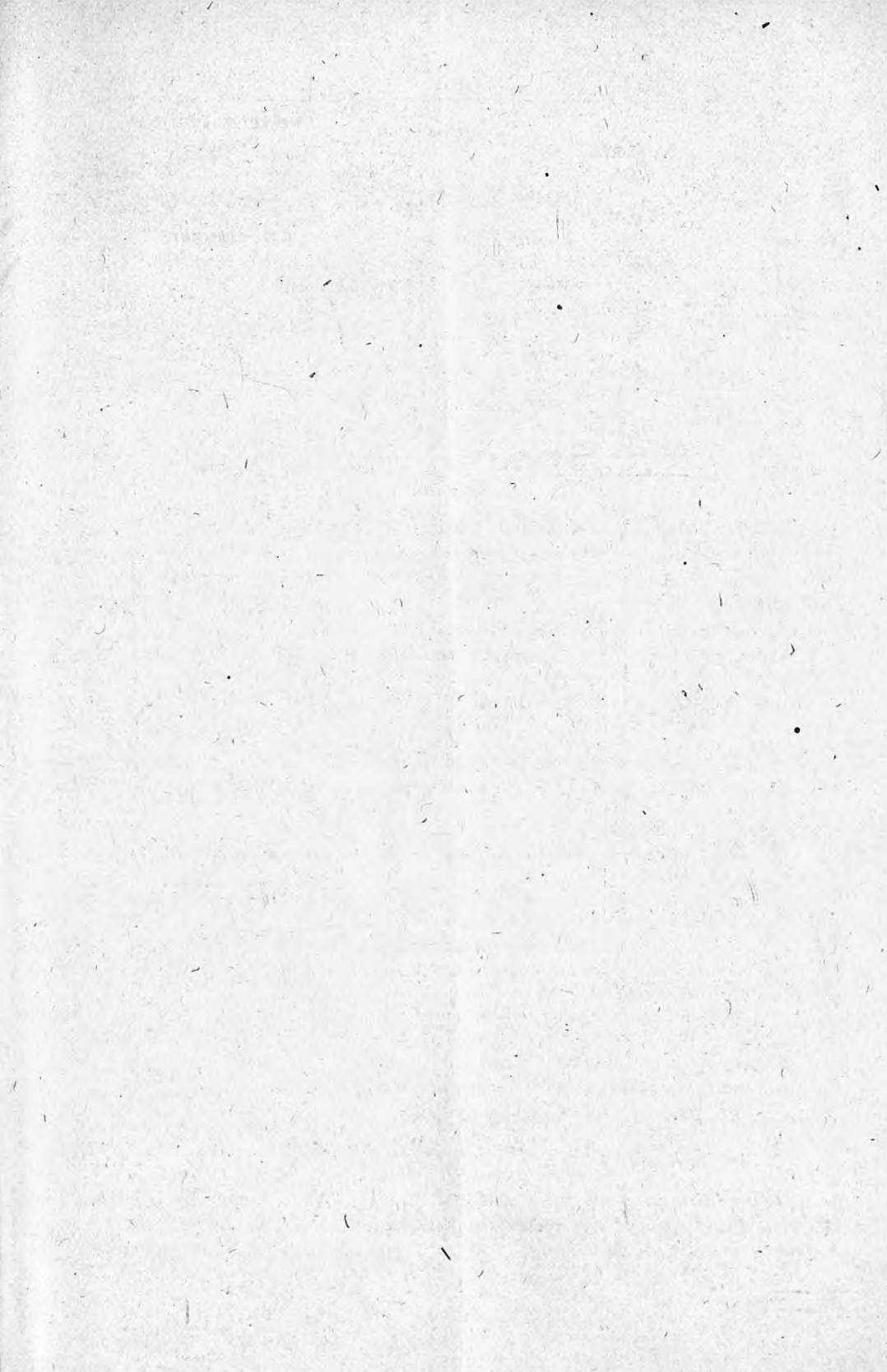
ADDRESS—

HENRY HECHLER,

CORNER BUCKINGHAM AND ARGYLE STREETS,
HALIFAX, NOVA SCOTIA, CANADA.

N. B.—Correspondents residing abroad would confer a favour by remitting \$1.00, \$3.00, or \$5.00 worth of any *provisional* postal issue that may be current. A prompt remittance in return would be made.

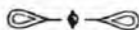
J. BURROWS, Printer, 136 Hollis-st., Halifax, N. S.



PAID

PAID

HENRY HEGLER,
WHOLESALE
AND
RETAIL
TOBACCONIST.



HALIFAX NOVA SCOTIA.