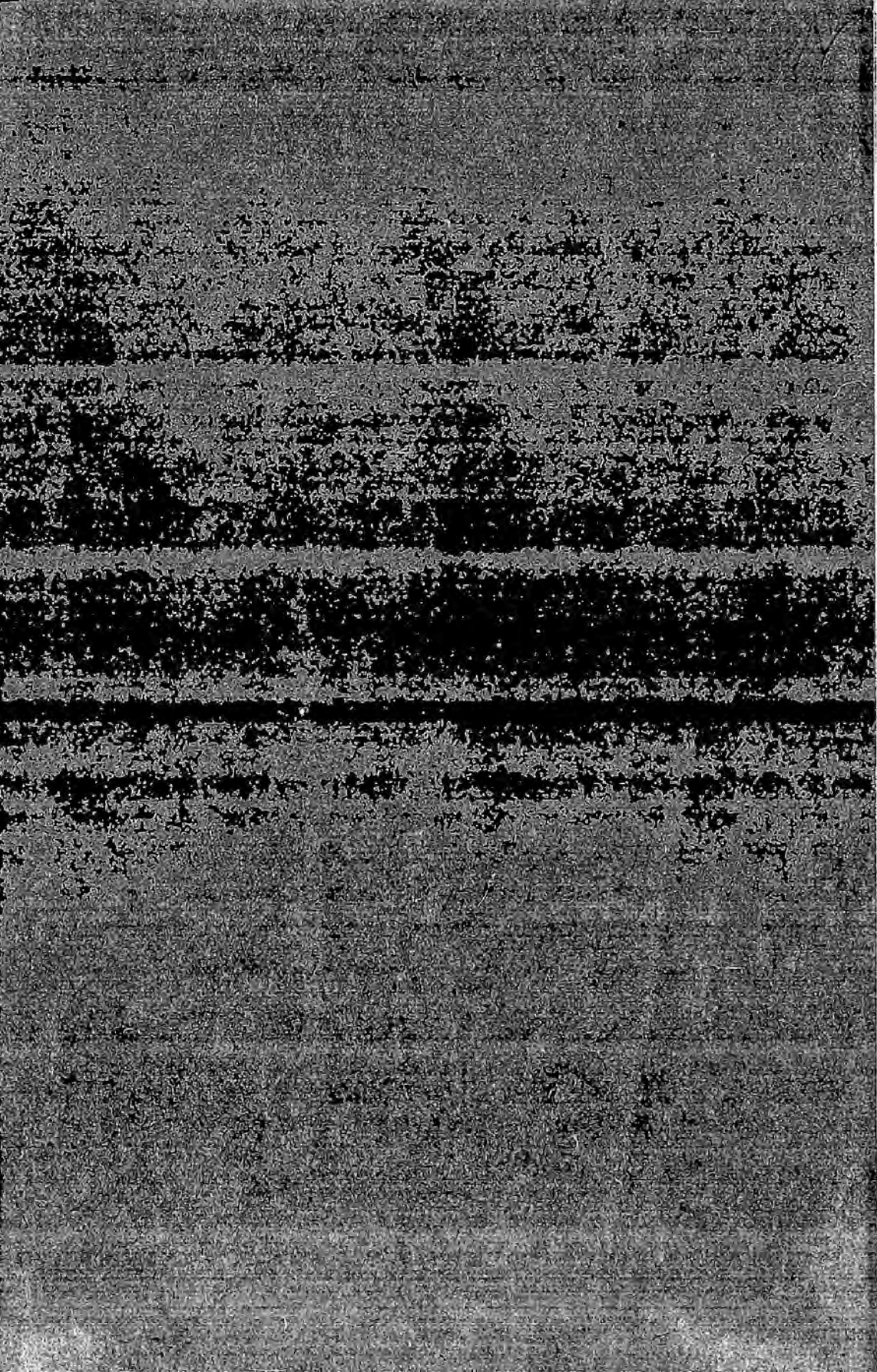




Bibliotheca Sinesiana.

PHILATELIC SECTION.



Crawford 854(1-4.)



THE

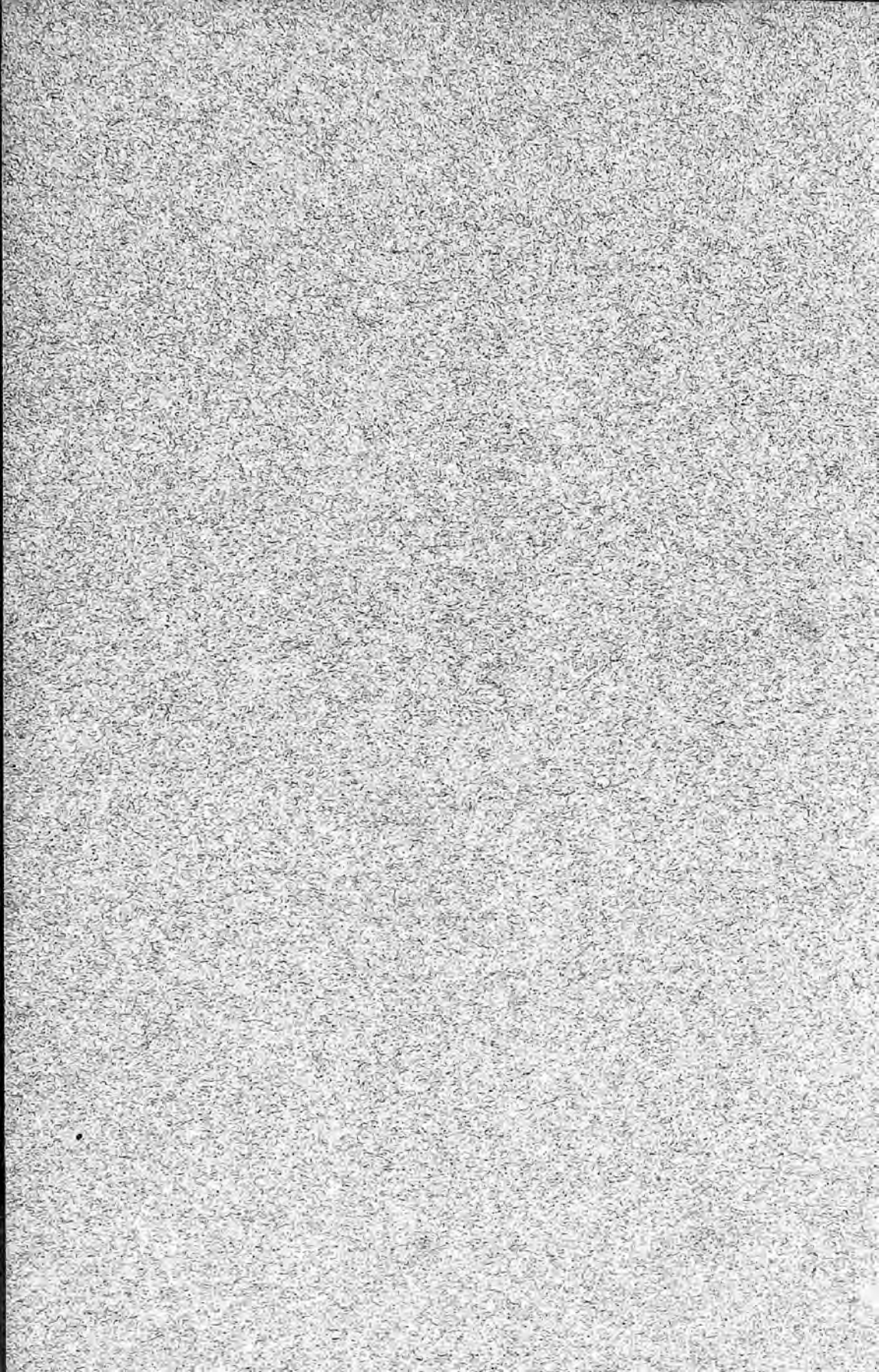
Postage Stamp Catalogue

CHARLES G. CALDER,

No. 101 WESTMINSTER STREET,

PROVIDENCE, R. I.

CENTENNIAL EDITION.



THE
POSTAGE STAMP CATALOGUE,

A DESCRIPTIVE LIST OF ALL POSTAGE STAMPS EVER ISSUED BY ANY GOVERNMENT
IN THE WORLD, GIVING THEIR DATES OF ISSUE, COLOR AND VALUE.

ILLUSTRATED WITH THE TYPES OF EVERY SERIES,

AND GIVING THE

PRICES. USED AND UNUSED, AT WHICH THEY CAN BE OBTAINED OF THE PUBLISHERS,

BEING A USEFUL GUIDE FOR ARRANGING STAMPS IN

SCOTT'S CELEBRATED POSTAGE STAMP ALBUMS.

THIRTY-FIRST EDITION.

THOROUGHLY REVISED AND CORRECTED,

UNITED STATES, N. A.

100 CENTS = 1 DOLLAR.
PROVISIONAL ISSUES.

Brattleboro.



New Used
5 c. 1845, buff (Photograph of above) 10

New Haven.

5 c. 1845, (t. 1) env. red

New York.

3 c. 1842, (t. 12) buff 5 00

3 c. 1843, (t. 1) blue 2 00 50

5 c. 1845, (t. 2) black 1 00 1 00

Providence.



5 c. 1845, black
10 c. " "

NOTE.—Printed in sheets of twelve.
Eleven varieties of the 5 c. and one
10 c.

St. Louis.



5 c. 1845, black
10 c. " " 5 00
20 c. " " "

NOTE.—There are three varieties
of each of these.

GENERAL ISSUE.



New Used
5 c. 1847, brown 25 10
10 c. " (t. 3) black 1 00 50

Head in Oval, except. 90 c.

1 c. 1851, (t. 4) blue 2 2
3 c. " (t. 5) red 2 1
5 c. 1856, (t. 6) brown 10 3
10 c. 1855, (t. 7) green 10 3
12 c. 1851, (t. 8) black 10 8
24 c. 1857, (t. 9) lilac 20 20
30 c. " (t. 10) orange 25
90 c. " (t. 11) blue 75

FOR DELIVERY BY CARRIERS.



1 c. 1851, black
1 c. " variety, " red
Head Franklin.
1 c. 1851, blue on pink (t. 12)
Eagle in Oval.
1 c. 1857, (t. 13) blue 10

GENERAL ISSUE.

U. S. and value in corners. With and without rectangular embossing on back.

1 c. 1861, blue 5 1
3 c. " red 5 1
5 c. " brown 10 2
10 c. " green 15 1
12 c. " black 25 1

New Used

24 c. 1861, lilac 60 5
30 c. " orange 60 10
90 c. " blue 2 00 25
2 c. 1863, black 3 1
15 c. 1866, " 25 2

Various Designs.

1 c. 1869, (t. 14) buff 5
2 c. " (t. 15) brown 5 3
3 c. " (t. 16) blue 6 1
6 c. " (t. 17) blue 10 3
10 c. " (t. 18) yellow 20 5
12 c. " (t. 19) green 25 5
15 c. " brown and (t. 20) blue 30 10

24 c. " green and pur- (t. 21) ple 25
30 c. " blue and car- (t. 22) mine 25
90 c. " black and car- (t. 23) mine

Head to left in Oval, with and without rectangular embossing on back.

1 c. 1870, (t. 24) blue 2 1
2 c. " (t. 25) brown 3 1
3 c. " (t. 26) green 4 1
6 c. " (t. 27) red 8 1
7 c. 1871, vermilion (t. 28) 3
10 c. 1870, (t. 29) brown 12 1
12 c. " dark purple (t. 30) 1
15 c. " orange (t. 31) 18 3
24 c. " (t. 32) purple 5
30 c. " (t. 33) black 36 3
90 c. " (t. 34) carmine 1 00 5
2 c. 1875, (t. 25) vermilion 3 1
5 c. " (t. 32) blue 6 1

NEWSPAPER STAMPS.

Very large stamps.

5 c. 1865, (t. 35) blue 50
5 c. " variety 50
10 c. " green 25
25 c. " red 50



		New Used
2 c. 1875,	black	
3 c. "	"	
4 c. "	"	
6 c. "	"	
8 c. "	"	
9 c. "	"	
10 c. "	"	



12 c. 1875,	carmine
24 c. "	"
36 c. "	"
48 c. "	"
60 c. "	"
72 c. "	"
84 c. "	"
96 c. "	"

Similar to above, different figures in each.

192 c. 1875,	brown
3 d. "	vermillion
6 d. "	ultramarine
9 d. "	orange
12 d. "	green
24 d. "	purple
36 d. "	red
48 d. "	brown
60 d. "	pale purple

ENVELOPE STAMPS.



3 c. 1853,	White paper, red	25	5
	four types		
6 c. "	green	100	
6 c. "	red	100	
10 c. "	green		
10 c. "	variety, green		
3 c. 1853,	Buff paper, red	25	2
	four types		
6 c. "	green	100	
6 c. "	red	100	
10 c. "	green		
10 c. "	variety, green		



New Used

	White paper.		
1 c. 1857,	(t36) blue		
3 c. "	red	25	5
4 c. "	blue and red		
6 c. "	red	100	
10 c. "	green	100	
	Buff paper.		
1 c. 1857,	blue (t36)		3
3 c. "	red	25	3
4 c. "	blue and red		
6 c. "	red	100	
10 c. "	green	100	



White paper.

3 c. 1861,	pink		
6 c. "	"	50	
10 c. "	(next t.) green	15	5
	Blue paper,		
3 c. 1861,	pink	100	
	Buff paper.		
3 c. 1861,	pink		2
6 c. "	"	50	



10 c. 1861,	green	15	
12 c. "	red and brown	25	
20 c. "	red and blue	1 00	
24 c. "	red and green	50	
40 c. "	red and black	1 00	



2 c. 1863,	black
2 c. "	black, brown pp.



New Used

	White paper.		
3 c. 1864,	pink	5	1
6 c. "	"	10	
3 c. "	brown	6	
6 c. "	violet		
	Buff Paper.		
3 c. 1864,	pink	5	1
6 c. "	"	10	
3 c. "	brown	6	
6 c. "	violet	12	

Same as 1863 2 c. "U. S. Post."—
(Several Varieties.)

2 c. 1865,	black	4	3
2 c. "	orange pp.	5	1



9 c. 1865,	yellow	25	
12 c. "	brown	25	
18 c. "	red	25	
24 c. "	blue	20	
30 c. "	green	20	
40 c. "	rose	20	

White paper.

Oval, same head as same issue and value adhesive.

1 c. 1870,	(t37) blue	5	3
2 c. "	(t38) brown	5	5
3 c. "	(t39) green	5	1
6 c. "	(t40) red	10	3
10 c. "	(t41) brown	15	
12 c. "	(t42) purple	25	
15 c. "	(t43) orange	30	
24 c. "	(t44) purple	50	
30 c. "	(t45) black	50	
90 c. "	(t46) carmine	1 50	

Lemon paper.

1 c. 1870,	(t37) blue	5	2
2 c. "	(t38) brown	5	2
3 c. "	(t39) green	5	1
6 c. "	(t40) red	10	
7 c. "	vermillion		
	(t47)	15	
10 c. "	(t41) brown	15	
12 c. "	(t42) purple	20	
15 c. "	(t43) orange	20	
24 c. "	(t44) purple	35	
30 c. "	(t45) black	50	
90 c. "	(t46) carmine	1 50	
1 c. "	(t37) manilla		
	pp. blue	5	1
2 c. "	(t38) manilla		
	pp. brown	10	2
1 c. "	(t37) orange		
	pp. blue	5	1
2 c. "	(t38) orange		
	pp. brown	10	1

	New	Used
<i>Salmon Paper.</i>		
3 c. 1870, (t 39) green	5	1
6 c. " (t 40) carmine	10	
12 c. " (t 42) purple	15	
15 c. " (t 43) orange	50	
24 c. " (t 44) purple	35	
30 c. " (t 45) black	50	
90 c. " (t 46) carmine	1	50
<i>Plimpton Manufacture, similar to last.</i>		
<i>White Paper.</i>		
1 c. 1874, blue		
1 c. 1875, " "	3	1
2 c. 1874, brown	50	10
2 c. " var. " "	15	5
2 c. 1875, " "	25	10
2 c. " vermilion	4	1
3 c. 1874, green	10	1
3 c. 1875, " "	3	1
5 c. " (t 541) blue	10	3
6 c. 1874, carmine	10	2
10 c. " brown		
10 c. 1875, " "	15	
12 c. 1874, dark purple	25	
15 c. " orange	20	
24 c. " purple	50	
30 c. " black	40	
90 c. " carmine	110	
<i>Lemon Paper.</i>		
1 c. 1874, blue		
1 c. 1875, " "	3	1
2 c. 1874, brown	50	10
2 c. " var. " "	15	5
2 c. 1875, " "	25	10
2 c. " vermilion	4	1
3 c. 1874, green	10	1
3 c. 1875, " "	3	1
5 c. " (t 541) blue	10	3
6 c. 1874, carmine	10	2
7 c. " vermilion		
10 c. " brown		
10 c. 1875, " "	15	
12 c. 1874, d'k purple	25	
15 c. " orange	35	
24 c. " purple	50	
30 c. " black	75	
90 c. " carmine	50	
<i>Salmon Paper.</i>		
2 c. 1875, red	4	2
3 c. 1874, green	10	2
3 c. 1875, " "	5	2
5 c. " (t 541) blue	25	
6 c. 1874, carmine	10	
12 c. " dark purple	25	
15 c. " orange	35	
24 c. " purple	50	
30 c. " black	75	
90 c. " carmine	150	
<i>Fawn Paper</i>		
2 c. 1875, vermilion	25	
3 c. " green		
<i>Blue Paper.</i>		
3 c. 1875, green	5	1
5 c. " (t 541) blue	10	
<i>Orange Paper.</i>		
1 c. 1874, blue	10	5
1 c. 1875, " "	3	1
2 c. 1874, brown		
2 c. " var. " "	10	
<i>Manila Paper.</i>		
1 c. 1874, blue	10	5
1 c. 1875, " "	3	
2 c. 1874, brown		10
2 c. " var. " "	10	
2 c. 1875, " "	25	
2 c. " vermilion	3	1



3 c. 1876, green 10 5
 3 c. " red 10 5

U. S. OF COLOMBIA, S. A.

(Brought over from page 46.)

Antioquia.



Similar to Out.

2 1/2 c. 1868, (t 485) blue
 10 c. " (t 486) lilac
 5 c. " (t 487) green
 1 p. " (t 488) red
 2 1/2 c. 1869, (t 489) blue
 5 c. " (t 490) green
 10 c. " (t 491) lilac
 20 c. " (t 492) b'wn
 1 p. " (t 493) carmine

Various Designs

1 c. 1874, (t 494) light green
 5 c. " (t 495) " "
 10 c. " (t 496) lilac
 20 c. " (t 497) brown
 50 c. " (t 498) blue
 1 p. " (t 499) red
 2 p. " (t 500) black on yellow
 5 p. " (t 501) black on red

Various Designs.

1 c. 1876, b. on green
 2 1/2 c. " blue
 5 c. " green
 10 c. " violet

New Used

New Used

10 c. 1873, vermilion	10
12 c. " "	3
15 c. " "	3
24 c. " "	5
30 c. " "	10
90 c. " "	10

JUSTICE.

1 c. 1873, purple	10
2 c. " "	10
3 c. " "	5
6 c. " "	5
10 c. " "	15
12 c. " "	10
15 c. " "	10
24 c. " "	25
30 c. " "	10
90 c. " "	10

NAVY.

1 c. 1873, blue	5
2 c. " "	5
3 c. " "	2
6 c. " "	3
7 c. " "	25
10 c. " "	10
12 c. " "	5
15 c. " "	10
24 c. " "	15
30 c. " "	15
90 c. " "	50

POST OFFICE.



1 c. 1873, black	5
2 c. " "	2
3 c. " "	1
6 c. " "	1
10 c. " "	
12 c. " "	10
15 c. " "	10
24 c. " "	5
30 c. " "	5
90 c. " "	10

ENVELOPE STAMPS.



2 c. 1873, black	10
3 c. " "	2
6 c. " "	20
2 c. 1874, " "	5
3 c. " "	2
6 c. " "	5

STATE.

Same as regular Issue.

1 c. 1873, green	10
2 c. " "	10
3 c. " "	10
6 c. " "	5
7 c. " "	25
10 c. " "	15
12 c. " "	10
15 c. " "	10
24 c. " "	
30 c. " "	10
90 c. " "	



New Used

2 d. 1873, black and green	
5 d. " black and green	
10 d. " black and green	
20 d. " black and green	

TREASURY.

1 c. 1873, brown	2
2 c. " "	1
3 c. " "	1
6 c. " "	1
7 c. " "	5
10 c. " "	5
12 c. " "	2
15 c. " "	5
24 c. " "	10
30 c. " "	5
90 c. " "	5

WAR.

1 c. 1873, red	1
2 c. " "	10
3 c. " "	1
6 c. " "	1
7 c. " "	25
10 c. " "	15
12 c. " "	15
15 c. " "	5
24 c. " "	5
30 c. " "	5
90 c. " "	

ENVELOPE STAMPS.

1 c. 1873, red	2
2 c. " "	
3 c. " "	2
6 c. " "	5
10 c. " "	
12 c. " "	10
15 c. " "	
24 c. " "	
30 c. " "	

NOTE.—These are stated to exist on three colors of paper, but we have only seen the low values on that number.

OFFICIAL STAMPS.

All except Post Office same design as General Issue, with Name of Department above.



AGRICULTURE.

1 c. 1873, straw	
2 c. " "	10
3 c. " "	5
6 c. " "	5
10 c. " "	25
12 c. " "	
15 c. " "	
24 c. " "	
30 c. " "	25

EXECUTIVE.

1 c. 1873, carmine	25
2 c. " "	25
3 c. " "	10
6 c. " "	15
10 c. " "	25

INTERIOR.

1 c. 1873, vermilion	2
2 c. " (t 48) "	2
3 c. " "	1
6 c. " "	1

Rep. Ori.		Rep. Ori.		Rep. Ori.	
LOCAL STAMPS.		ENVELOPE STAMPS.		CLARK & Co.	
ADAMS & Co's EXPRESS.		Eagle, (t 92) blue on buff	10	1 c. (t 121) red on yellow	
25 c. (t 49) black	25	" " pink	25	CORNWELL'S MADISON Sq. P. O.	
25 c. (t 50) black on blue		2 c. (t 93) red on buff	2	(t 122) red	
AMERICAN EXPRESS Co.		2 c. (t 94) address crased		CROSBY'S CITY POST.	
2 c. (t 51) black		red	2	(t 123) figure,	
on green		BRADY & Co.		carmine	5
AMERICAN LETTER MAIL Co.		(t 95) red on yellow		CUMMING'S CITY POST.	
5 c. (t 52) blue		(t 96) lilac		2 c. (t 124) black on pink	
5 c. black	1 00	BRAINARD & Co.		" on yellow	
5 c. (t 53) black	50	(t 97) black	1 00	2 c. " on green	
BARNARD'S CARIBOO EXPRESS.		blue		C. & W. BRIDGE DESPATCH.	
Paid (t 54) black on red		BROADWAY P. O.		(t 125) bronze on green	
Collect (t 55) " on green		(t 98) black	1 00	" vermilion	
BARR'S DESPATCH.		gold on black		DEMINGS PENNY POST.	
(t 56) red		BRONSON & FORBES.		(t 126) black	
BERFORD & Co's EXPRESS.		(t 99) black on green		DUPUY & SCHENCK.	
3 c. (t 57) black		BROOKLYN CITY EXPRESS POST.		1 c. (t 127) black	
6 c. (t 58) green		1 c. (t 100) blue	5	EAGLE POST.	
10 c. (t 59) purple		2 c. crimson	5	(t 128) red	
25 c. (t 60) red		2 c. pink	5	blue	
D. O. BLOOD & Co.		2 c. blue	5	(t 129) black	
(t 61) black		2 c. orange		EAST RIVER P. O.	
(t 62) "		BROWN & Co's. CITY POST.		23 Ave. D, (t 130) black	
(t 63) "		1 c. (t 101) black		23 " (t 131) green	1 00
Kochersperger & Co.	25	2 c. (t 102) "		18 " "	
(t 64) black		BROWN'S EASTON DESPATCH.		ESSEX LETTER EXPRESS.	
(t 65) black on green		1 c. (t 103) black		2 c. (t 132) vermilion	
(t 66) " "		on pink		FLOYD'S PENNY POST.	
For the P. O. (t 67)		2 c. (t 104) black		1 c. (t 133) head, blue	5 1 00
black on blue		BROWN & MCGILL.		1 c. " brown	5
1 c. des. (t 68) black		(t 105) blue		FRAZER & Co.	
on bronze		black		2 c. (t 134) black	
Penny Post, (t 69) gold	25	CALIFORNIA PENNY POST Co.		on pink	
on lilac		5 c. (t 106) blue		GORDON CITY EXPRESS.	
" blue on lilac	50	5 c. (t 107) large, "		2 c. (t 135) green	
" bronze on black	50	7 c. (t 108) vermilion		GRAFLIN'S BALTIMORE DESPATCH.	
P. O. (t 70) black	1 00	CARNES, CITY LETTER EXPRESS.		1 c. (t 136) black	
on bronze		(t 109) pink	25	HALE & Co.	
Paid (t 71) black		Name crased, "	50	5 c. 13 Court St. (t 137)	
on bronze		Surcharged X. "	1 00	red	
For P. O. (t 72) black		CARTER (G.) PAID DESPATCH.		5 c. " " blue	50
" (t 73) "		(t 110) black		5 c. " " "	25
" (t 74) "		CARRIERS DESPATCH.		HALL & MILLS.	
Despatch env. red		(t 111) blue		Free despatch post	
" on white		red		(t 132) green	
" red on buff		CHEVER & TOWLE.		G. A. Mills, "	
(t 75) 26 & 28		(t 112) blue	5	HANFORD'S PONY EXPRESS.	
red on white		OHIO PENNY POST.		2 c. (t 139) yellow	
26 & 28 red on buff		1 c. (t 113) orange		HOYT'S LETTER EXPRESS TO	
(t 76) 28 S. 6 red on white		CITY DESPATCH.	5	ROCHESTER.	
28 S. 6 red on buff		1 c. (t 114) black		Small oblong (t 140)	
BOUTON'S.		CITY DESPATCH POST.		vermilion	
2 c. (t 77) oblong pink		2 c. (t 115) Washington		HONOURS CITY POST.	
Franklin, city, (t 78)		green		Penny post (t 141) black	
green		3 c. Washington, white		City, " "	
Head (t 79) green	5 2 00	3 c. " green		2 c. city post, "	
" black	5 1 00	3 c. " grey		2 c. " " paid "	
" (t 80) "	5 1 00	2 c. (t 116) C C at sides		HUMBOLDT'S EXPRESS.	
" black on blue	2	white		25 c. (t 142) brown	
BOYCE'S CITY EXPRESS.		2 c. C C at sides, green		HUSSEY'S POST.	
2 c. (t 81) black on green		2 c. " vermilion		Bank, 82 Broadway	
BOYD'S CITY EXPRESS.		2 c. " yellow		(t 143) blue	
2 c. (t 82) large, green		CITY DESPATCH.		Letter-box (t 144) black	25
2 c. (t 83) heavy oval "		2 c. (t 117) head, red		" red	
2 c. (t 84) thin head "	1 00	CITY EXPRESS, G. & H.		Bank, 50 William St.	
2 c. (t 85) " figure "	25	Paid (t 118) black	25	(t 145) blue	
2 c. (t 86) crested head		423 Washington St.		50 William St. (t 146)	
green	25	(t 119) blue		black	
1 c. (t 87) " big		5 c. (t 120) "		" " red	10
figure, green	25	CLARK'S EXPRESS.		\$1 per 100, (t 147) "	25
2 c. crested big figure		(t 533) black.		black	
green	10	CRESSMAN & Co.		1 c. "one stamp" "	25
2 c. (t 88) " variety, "	10	(t 534) black		(t 148) red	25
2 c. (t 89) rough design					
green					
2 c. rough design, red	5				
2 c. white paper, "					
1 c. (t 90) curved wing					
lilac	5				
2 c. curved wing, red	5				
1 c. (t 91) rough design,					
blue	5				
1 c. rough design, lilac	5				

PRICE CATALOGUE

	Rep. Ori.
1 c. (t 149) black	
1 c. blue	10
1 c. red	
1 c. green	
1 c. 1863, blue	25
1 c. " green	
1 c. " yellow	
1 c. " brown	
2 c. " blue	
2 c. " red	
2 c. " brown	
5 c. (t 150) black on red	
10 c. bronze on green	
15 c. gold on black	
20 c. black on white	
25 c. gold on blue	
2 c. 1865, blue	10
2 c. 1867, "	
2 c. 1868, "	
2 c. 1870, "	10
2 c. 1871, "	
2 c. black	
JEFFERSON MARKET P. O.	
(t 151) pink	
blue	
JENKINS' CAMDEN DESPATCH.	
(t 152) black	5
JONES' CITY EXPRESS.	
2 c. (t 153) rose	
KIDDER'S CITY EXPRESS.	
2 c. (t 154) pale blue	5
2 c. green	
KINGMAN'S CITY EXPRESS.	
2 c. (t 155) black	
2 c. black on green	
LANGTON & Co.	
5 c. (t 155 a) black	
LETTER EXPRESS FREE.	
5 c. (t 156) pink	2 50
5 c. white	
5 c. green	
10 c. (t 157) pink	
10 c. variety, scarlet	
MAIL (HARTFORD).	
Man. (t 158) yellow	
" pink	
MARTIN'S CITY POST.	
2 c. (t 159) black	
McINTIRE'S CITY POST.	
2 c. (t 160) pink	25
MENANT & Co's. EXPRESS.	
2 c. (t 161) red	
MESSENGER UNION Sq. P. O.	
Fountain (t 162) green	
METROPOLITAN ERRAND CARRIERS.	
1 c. (t 163) red	5 10
5 c. " "	10 25
10 c. " "	10
20 c. " "	25
2 c. env. (t 164) "	10
METROPOLITAN P. O.	
1 c. (t 165) red	
1 c. blue	
(t 166) blue	
red	
N. Y. CITY EXPRESS POST.	
2 c. (t 167) green	
OVERTON & Co. EXPRESS.	
(t 168) black	15 00
PENNY POST.	
(t 169) blue	
1 c. (t 170) blue on blue	
1 c. (t 171) blue	
POMEROY'S LETTER EXPRESS.	
5 c. (t 172) yellow	1 00
5 c. blue	5
5 c. black	5

	Rep. Ori.
POST-OFFICE DESPATCH.	
1 c. (t 173) red on blue	
1 c. blue	
1 c. "	
1 c. "	
PRICE'S CITY EXPRESS.	
2 c. (t 174) green	5
2 c. (t 175) "	
2 c. vermilion	
PRIEST'S PAID DESPATCH.	
(t 176) yellow	
red	
PRINCE'S LETTER DESPATCH.	
(t 177) black	25
ROBINSON & Co.	
1 c. (t 178) blue	
RUSSELL'S EIGHTH AVE. P. O.	
(t 179) black on green	
" red	
" brown	
vermilion	
STATEN ISLAND.	
3 c. (t 180) vermilion	
STEINMEYER'S CITY POST.	
2 c. (t 181) gray	
2 c. pink	
2 c. yellow	
STRINGER & MORTON'S CITY DESPATCH.	
Small obl. (t 182) black on gold	
SQUIER & Co. CITY LETTER DESPATCH.	
1 c. (t 183) black	
1 c. puce	
1 c. green	
SWARTS' CHATHAM Sq. P. O.	
(t 184) pink	1 00
red	5 50
black	5 50
(t 185) pink	
red	5 50
black	
blue	
black on green	
1 c. (t 186) blue	
THESE & Co. PENNY POST.	
(t 187) blue	3
UNION SQUARE P. O.	
1 c. (t 188) green	
2 c. pink	50
U. S. MAIL PREPAID.	
1 c. (t 189) yellow	1 00
1 c. red	
U. S. P. O.	
1 c. (t 190) gilt on black	2 00
1 c. blue on white	
1 c. black on blue	
1 c. (t 191) L. S. pink	
1 c. L. P. "	
1 c. " blue	
WALDRON'S EXPRESS.	
(t 193) pink	
WALTON & Co. CITY EXPRESS.	
2 c. pink	
WASHINGTON CITY DESPATCH.	
1 c. (t 193) violet	
1 c. blue	

	Rep. Ori.
WELLS, FARGO & Co.	
10 c. (t 194) brown	25
25 c. blue	25
25 c. red	15
1 d. "	25
2 d. green	15
2 d. red	25
4 d. green	25
4 d. black	25
1 d. (t 195) blue	25
Oblong oval, black	
" " blue	
(t 196) "	25
(t 197) "	10
WESTTOWN.	
Small oval (t 198) gilt	
WESTERVELT'S POST.	
(t 199) flesh	5
lavender	5
WHITTLESEY'S EXPRESS.	
2 c. (t 200) red	
2 c. blue	
WINAN'S CITY POST.	
2 c. (t 201) white	2 00
5 c. yellow	
10 c. green	
20 c. vermilion	2 00
W. WYMAN.	
5 c. engine (t 202) black	10 00
ALSACE & LORRAINE, E.	
See Germany.	



ANGOLA.
Portuguese Colony in Africa.
1000 REIS = 1 MILLEREIS.



	Rep. Ori.
New Used	
5 r. 1870, black	
10 r. " yellow	15
20 r. " straw	20
25 r. " rose	25
50 r. " green	
100 r. " lilac	

ANTIGUA, W. I. I.
12 PENCE = 1 SHILLING.



1 p. 1862, pink	10
6 p. " green	10
1 p. 1867, red	6 5

ANTIOQUIA, S. A.
See United States of Colombia.

ARGENTINE REPUBLIC,

S. A.

100 CENTAVOS = 1 PESO.



			New Used
5 c.	1858,	red	20
10 c.	"	green	30
15 c.	"	blue	40
5 c.	"	large fig. red	75
10 c.	"	green	75
15 c.	"	blue	75



5 c.	1862,	pink	20	15
10 c.	"	green	30	
15 c.	"	blue		



5 c.	1864,	rose	25	10
10 c.	"	green	50	15
15 c.	"	blue	50	20
5 c.	1866,	pink		10

Various Heads.

5 c.	1867,	red	15	5
10 c.	"	(t 203) green	25	10
15 c.	"	blue	50	15
1 c.	1873, (t 204)	violet	5	5
4 c.	"	(t 205) brown		10
30 c.	"	(t 206) orange		
50 c.	"	(t 207) black		
90 c.	"	(t 208) blue		

Corrientes.



1 r.	1856, (t 209)	blue	2 50	2 00
3 c.	1861,	"	1 00	
2 c.	1864,	green	2 00	
5 c.	1868,	yellow		
5 c.	1874,	pink		



AUSTRIA, E.

100 KREUZER = 1 FLORIN.



1 k.	1850,	yellow	5	
2 k.	"	black	5	
3 k.	"	red	2	
6 k.	"	brown	2	
9 k.	"	blue	2	



Similar to cut.

2 k.	1858,	yellow	15	
3 k.	1859,	green	15	
3 k.	1858,	black	15	
5 k.	"	red	2	
10 k.	"	brown	2	
15 k.	"	blue	2	



2 k.	1861	yellow	5	
3 k.	"	green	5	
5 k.	"	red	2	
10 k.	"	brown	2	
15 k.	"	blue	1	



2 k.	1863,	yellow	2	
3 k.	"	green	2	
5 k.	"	pink	1	
10 k.	"	blue	1	
15 k.	"	brown	1	



2 k.	1867,	yellow	5	2
3 k.	"	green	6	2
5 k.	"	red	8	1

				New Used
10 k.	1867,	blue	15	1
15 k.	"	brown		2
25 k.	"	violet		5
50 k.	"	(t 210) flesh		25

NEWSPAPER STAMPS.



1 k.	1851,	blue	10	5
10 k.	"	yellow,	50	
50 k.	"	red	50	



1 k.	1858,	blue	10	5
2 k.	1850,	green		10
2 k.	1858,	brown	10	5
4 k.	"	"		

Different Designs.

1856,	(t 211)	blue	20	10
1860,	()	lilac	20	10
1861,	(t 213)	lavender	10	5
1863,	(t 214)	"	5	3
1867,	(t 215)	violet	5	1

ENVELOPE STAMPS.

All the Envelope Stamps are the same type as the corresponding date of adhesives.

3 k.	1861,	green	5	
5 k.	"	red	5	
10 k.	"	brown		
15 k.	"	blue		
20 k.	"	orange		
25 k.	"	brown		
30 k.	"	violet		
35 k.	"	brown		
3 k.	1863,	green	10	
5 k.	"	red	2	
10 k.	"	blue	4	
15 k.	"	brown	5	
25 k.	"	violet	15	
3 k.	1867,	green	10	5
5 k.	"	red	15	2
10 k.	"	blue		3
15 k.	"	brown	25	5
25 k.	"	violet		

AUSTRIAN ITALY, E.,

and the Foreign Branches of the Austrian Post-Office.

100 SOLDI = 1 FLORIN.

The designs are the same as the stamps of the same date Austria, with money altered.

Arms on Shield.

5 c.	1850,	yellow	15	
10 c.	"	black	15	
15 c.	"	red	3	
30 c.	"	brown	3	
45 c.	"	blue	3	

New Used

Head to Left.

2 s. 1858,	yellow	25	5
3 s. 1862,	green	25	15
3 s. 1858,	black	25	15
5 s. "	red		5
10 s. "	brown		5
15 s. "	blue		5

Head in Oval.

5 s. 1861,	red		5
10 s. "	brown		10

Arms in Oval.

2 s. 1863,	yellow		5
3 s. "	green		5
5 s. "	pink		5
10 s. "	blue		3
15 s. "	brown		3

FOR FOREIGN BRANCHES ONLY.

Head in Large Circle.

2 s. 1867,	yellow		5
3 s. "	green		5
5 s. "	red		5
10 s. "	blue		5
15 s. "	brown		5
25 s. "	violet		5
50 s. "	(t 216) flesh		25

ENVELOPE STAMPS.

Head in Oval.

3 s. 1861,	green	10
5 s. "	red	15
10 s. "	brown	30
15 s. "	blue	40
20 s. "	orange	60
25 s. "	brown	60
30 s. "	violet	80
35 s. "	brown	1 00

Arms in Oval.

3 s. 1863,	green	10
5 s. "	red	15
10 s. "	blue	25
15 s. "	brown	30
25 s. "	violet	40

Head in Large Circle.

3 s. 1867,	green		
5 s. "	red		
10 s. "	blue		
15 s. "	brown		
25 s. "	violet		

NEWSPAPER STAMPS.

Same as same date Austria.

1 k. 1858,	black	50	
2 k. "	red	10	5
4 k. "	"	50	

Danube Steam Navigation Company.

Anchor in Oblong Oval.

10 s. 1866,	lilac	50	
17 s. "	rose	75	
10 s. 1868,	green		



New Used

AZORES ISLANDS, E.

Portuguese Colony.

1000 REIS = 1 MILRES.



5 r. 1868,	black		
10 r. "	yellow	10	
20 r. "	straw	10	
25 r. "	rose	15	
50 r. "	green	20	
80 r. "	orange	30	
100 r. "	lilac	50	
120 r. "	blue	75	10
240 r. "	lilac	1 25	



5 r. 1871,	black		
10 r. "	yellow	10	
20 r. "	straw	10	
25 r. "	rose	15	
50 r. "	green	20	
80 r. "	orange	30	
100 r. "	lilac	50	
120 r. "	blue	75	10
240 r. "	lilac	1 25	
15 r. 1876,	brown		
150 r. "	blue		
300 r. "	violet		



BADEN, E.

60 KREUZERS = 1 GUILDER.



1 k. 1851,	buff	30	8
3 k. "	yellow	25	5
6 k. "	green	25	5
9 k. "	pink	25	5
1 k. 1853,	white	25	5
3 k. "	green	25	2
6 k. "	yellow	25	5
3 k. 1857,	blue	25	5

Arms on Shaded Ground.

1 k. 1860,	black	5	2
3 k. "	blue		3
6 k. "	orange	30	5
9 k. "	rose		10
6 k. 1862,	blue		10
9 k. "	brown		5



New Used

1 k. 1864,	black	3	3
3 k. 1862,	pink	5	1
6 k. 1864,	blue	15	3
9 k. "	brown	20	3
18 k. 1862,	green	30	15
30 k. "	orange	40	15



1 k. 1868,	green	5	3
3 k. "	rose	10	1
7 k. "	blue		3

UNPAID LETTER STAMPS.



1 k. 1862,	yellow	3
3 k. "	"	5
12 k. "	"	10

ENVELOPE STAMPS.

3 k. 1858,	blue	20
6 k. "	yellow	25
9 k. "	rose	
12 k. "	brown	
18 k. "	red	
3 k. 1862,	rose	5 1
6 k. "	blue	10 5
9 k. "	brown	15 3



New Used

BAHAMAS, W. I. I.
12 PENCE = 1 SHILLING.



Similar to Out.

1 p. 1859, (t218) carmine	5	5
4 p. 1861, (t217) rose	5	5
6 p. " (t217) purple	10	10
1 s. 1863, (t219) green	15	15
1 p. 1876, (t218) vermilion	6	



BARBADOS, W. I. I.
12 PENCE = 1 SHILLING.



Blue Paper.

(½ p.) 1852, green	50	
(1 p.) " blue	50	
(4 p.) " red	25	

White Paper.

(½ p.) 1861, green	5	2
(1 p.) " blue	5	2
(4 p.) " red	25	5



6 p. 1864, red	10	
1 s. " black	10	
3 p. 1873, claret	10	
5 s. " (t 220) pink	5	3
½ p. 1874, green	5	2
1 p. " blue	6	3
4 p. 1875, scarlet	5	5
6 p. " orange	10	10
1 s. " purple	10	10



New Used

BAVARIA, E.
60 KREUZERS = 1 GULDEN.



1 k. 1849, (t221) black	75	25
1 k. 1850, rose	25	5
3 k. " blue	25	2
6 k. " brown	25	2
9 k. " green	25	2
12 k. 1858, red	40	10
18 k. 1854, orange	25	5
1 k. 1862, yellow	5	3
3 k. " rose	10	1
6 k. " blue	15	5
9 k. " stone	20	3
12 k. " green	25	5
18 k. " red	45	5



1 k. 1867, green	3	1
3 k. " rose	6	1
6 k. " blue	5	5
9 k. " brown	5	5
12 k. " lilac	10	10
18 k. " red	10	10
6 k. 1868, brown	2	2
7 k. " blue	2	2
10 k. 1873, orange	5	5



3 pf. 1876, green	2	
5 pf. " green	2	
10 pf. " red	2	
20 pf. " blue	2	
25 pf. " bistre	5	
50 pf. " red	5	
1 m. 1874, va. violet	25	
2 m. 1876, " orange	25	

UNPAID LETTER STAMPS.



3 k. 1871, black	10
1 k. 1873, "	5
3 k. " "	10

New Used

Same as same date adhesive surcharged VOM EMPFAUZER ZAHLBAR in red.

3 pf. 1876, grey	5
5 pf. " "	5
10 pf. " "	10

RETURN LETTER STAMPS.



Augsburg, 1865, black	10
Bamberg, " "	10
München, " "	
" variety, " "	
Nürnberg, " "	
Speyer, " "	
Würzburg, " "	10

ENVELOPE STAMPS.

3 k. 1869, (t 222) pink 8 5
Same as same date adhesives, with post horns in place of upper numerals.

1 k. 1874, green	5
3 k. " rose	5
10 pf. 1876, "	8

NEWSPAPER WRAPPERS.

Same as same date envelopes.

1 k. 1874, green	5
3 pf. 1876, "	5



New Used

BELGIUM, E.

100 CENTIMES = 1 FRANC.



10 c. 1849, brown
20 c. " blue



1 c. 1861, green 5 2
10 c. 1850, brown 10 2
20 c. " blue 15 2
40 c. 1849, red 25 2
Arms in Centre.
1 c. 1866, slate
3 c. " blue 5
5 c. 1867, brown 5



10 c. 1865, slate 6 2
20 c. " blue 10 2
30 c. " brown 15 2
40 c. " rose 25 2
1 f. " violet 50 5



1 c. 1869, green 2 1
2 c. " blue 3 1
5 c. " amber 5 2
8 c. " violet 8



10 c. 1869, green 10 1
20 c. " (t 223) blue 15 1
30 c. " (t 224) amber 20 2
40 c. " (t 225) carmine 20 3
1 f. " (t 226) violet 50 5
25 c. 1875, bistro 15 2
50 c. " black 25 3

New Used

RETURNED LETTER STAMPS.



15 10 c. 1870, green 10
5 20 c. " blue

ENVELOPE STAMPS.

10 c. 1873, green 10

BERGEDORF, E.
16 SCHILLING = 1 MARK.



1/2 s. 1861, violet 3 00
3 s. " rose 3 00
1/2 s. " blue 10
1 s. " white 5
1 1/2 s. " yellow 5
3 s. " blue on rose 10
4 s. " brown 10



BERMUDA, W. I. I.

12 PENCE = 1 SHILLING.



1 p. 1865, red 6 5
2 p. " blue 12 10
6 p. " violet 35 15
1 s. " green 70 15
3 p. 1873, orange 20 10
3 p. 1874, green
1 p. 1875, "



BOLIVAR, S. A.

See United States of Colombia.



New Used

BOLIVIA, S. A.
100 CENTAVOS = 1 PESO.



5 c. 1867,	green	50	40
5 c. "	violet		
10 c. "	brown		
50 c. "	orange	150	
50 c. "	blue		
100 c. "	green		
100 c. "	blue	350	



5 c. 1868	green	25	10
10 c. "	red		10
50 c. "	blue		
100 c. "	yellow		
500 c. "	black		



5 c. 1871,	green	25	10
10 c. "	red		10
50 c. "	blue		
100 c. "	yellow		
500 c. "	black		

New Used



5 c. 1876,	blue	
10 c. "	orange	
20 c. "	green	
50 c. "	carmine	

PROVISIONAL ISSUE.



5 c. 1870,	black	10
10 c. "	green	10
50 c. "	brown	50
100 c. "	scarlet	100
500 c. "	blue	300



BRAZIL, S. A.
1000 REIS = 1 MILREIS.



30 r. 1843,	Black	
60 r. "	"	
90 r. "	"	



10 r. 1846,	black	15
30 r. 1844,	"	15
60 r. "	"	15
90 r. "	"	30
180 r. 1845,	"	
300 r. "	"	
600 r. "	"	

New Used



10 r. 1850	black	10	
20 r. "	"	15	
30 r. "	"	10	5
60 r. "	"	10	5
90 r. "	"	25	10
180 r. "	"	20	15
300 r. "	"	25	5
600 r. "	"	75	10
10 r. 1854,	blue	5	5
30 r. "	"	20	10
280 r. 1861,	red		20
420 r. "	yellow		35



10 r. 1866,	red	4	2
20 r. "	(t 227) lilac	7	2
50 r. "	blue	10	5
80 r. "	violet	15	10
100 r. "	green	10	2
200 r. "	(t 227) black	10	2
500 r. "	orange	75	10
300 r. 1871, (t 228)	green and violet		

ENVELOPE STAMPS.



100 r.	1867, green
200 r.	" black
300 r.	" red

BREMEN, E.

72 GROTE = 1 RIX-DOLLAR.



Various Designs Similar to Cut.

3 g. 1855,	blue	20
5 g. "	rose	20
7 g. "	yellow	20
10 g. 1861,	white	
5 s. g. 1855,	green	
2 g. 1863,	orange	20

ENVELOPE STAMPS.

Small Oblong Oval.

1 g. 1861, blue pp.	
	black 10
1 g. " white pp. "	10

BRITISH COLUMBIA & VANCOUVER'S ISLAND, N. A.

100 CENTS = 1 DOLLAR.
Different Designs.

Now Used			
2½ p. 1861,	(t 536) pink.	20	15
5 c. 1865, (t 537)	rose	25	25
10 c. "	blue	50	25



3 p. 1865,	blue	30	15
2 c. 1868,	brown		
5 c. 1869,	red	15	
10 c. "	pink		
25 c. "	orange	25	
50 c. "	violet		
1 d. "	green		



BRITISH GUIANA, S. A.

100 CENTS = 1 DOLLAR.



4 c. 1850,	yellow		
8 c. "	green		
12 c. "	blue		

Ship in Rect.

1 c. 1850,	carmine		
4 c. "	blue		
4 c. 1856, (t 538)	blue		
4 c. "	carmine		



1 c. 1853 (t 230)	red	1	00
1 c. "	blue	1	00
1 c. 1860,	rose	75	
2 c. "	orange	3	
4 c. "	blue	5	
8 c. "	rose	5	
12 c. "	grey	5	
24 c. "	green	20	
1 c. 1862,	brown	50	
1 c. 1863,	black	5	



Now Used			
1 c. 1862,	red		
2 c. "	yellow		
4 c. "	blue		

NOTE.—There are three varieties of each.



6 c. 1863,	blue	25	10
24 c. "	green		5
48 c. "	red		15
2 c. 1876, (t 547)	orange		

BRITISH HONDURAS, S. A.

12 PENCE = 1 SHILLING.



1 p. 1865,	blue	6	5
6 p. "	rose	15	
1 s. "	green	10	
3 p. 1872	brown	10	

BRUNSWICK, E.

30 SILBER GROSCHEN = 1 THALER.



1 s. g. 1852,	rose	50	
2 s. g. "	blue	35	
3 s. g. "	vermillion	35	
1 s. g. 1853,	orange	5	
2 s. g. "	blue	5	
3 s. g. "	pink	5	
1 p. g. 1857, (t 229)	brown	5	
4 s. g. 1856,	brown	25	
1 s. g. "	white	5	
1 s. g. 1863,	green	5	
3 s. g. 1862,	rose	5	
1 s. g. 1865,	yellow	5	



Now Used			
1½ g. 1865,	black	3	2
1 g. "	rose	3	2
2 g. "	blue	4	2
3 g. "	brown	4	3

ENVELOPE STAMPS.

Same as Last, Large.

1 s. g. 1855,	yellow	10	
2 s. g. "	blue	15	
3 s. g. "	rose	20	5

Same as Last Issue Adhesives.

1 s. g. 1865,	rose	8	
2 s. g. "	blue	12	
3 s. g. "	brown	15	

BUENOS AYRES, S. A.

8 REALS = 1 PESO.



2 p. 1858, (dos.),	blue		
3 p. "	(tres), green		
4 p. "	(cuatro), red		
5 p. "	(cinco), orange		
4 r. "	(cuatro), brown		
1 p. "	(un), brown		
1 p. 1859, (un),	blue		



4 r. 1859,	green	50	
1 p. "	blue	25	
2 p. "	red	50	
1 p. 1862,	rose	25	
2 p. "	blue	25	

CANADA, N. A.

12 PENCE = 1 SHILLING,
100 CENTS = 1 DOLLAR.

Various Designs.

1½ p. 1857, (t 231)	pink	50	25
3 p. 1851, (t 232)	red		7
6 p. "	(t 233) purple		25
7½ p. 1857, (t 234)	green		
10 p. 1855, (t 235)	blue		
12 p. 1851,	black		

Same Designs, Value in Cents.

1 c. 1859, (t 231)	pink	3	1
2 c. 1864,	"		5
5 c. 1859, (t 232)	vermillion	12	1
10 c. "	(t 233) violet	15	3
12½ c. "	(t 234) green	20	5
17 c. "	(t 235) blue	35	10



New Used

1/2 c. 1868	black	2	1
1 c. "	red	5	3
2 c. "	green	5	1
3 c. "	red	8	1
6 c. "	brown	10	1
12 1/2 c. "	blue	25	5
15 c. "	violet	30	3
1 c. 1869	yellow	5	3
5 c. 1876	slate		10

Same Design Smaller.

1 c. 1870	yellow	2	1
3 c. "	(t 236) red	5	1
2 c. 1871	green	5	1
6 c. "	brown	8	1
10 c. 1874	pink	12	3
5 c. 1876	slate	7	1

ENVELOPE STAMPS.

5 c. 1860	red		
10 c. "	brown		

REGIST'D LETTER STAMPS.



2 c. 1875	orange	5	2
5 c. "	green	10	3
8 c. "	blue	15	8

CAPE OF GOOD HOPE, AF.

12 PENCE = 1 SHILLING.

Triangular.

1 p. 1853	red	10	
4 p. "	blue	6	
6 p. 1858	lilac	15	
1 s. "	green	25	

Wood Block.

1 p. 1860	blue		
4 p. "	red		
1 p. "	"	1 00	
4 p. "	blue	1 50	

Rectangular.



1 p. 1865	red	6	3
4 p. "	blue		2
6 p. "	lilac	10	1
1 s. 1863	green	3	1
4 p. 1868	lilac	5	1
5 s. 1871	orange	25	5
1 p. 1874	lilac	10	
1/2 p. 1876	slate		5

CASHMERE, A.

16 ANNAS = 1 RUPEE.



New Used

1/2 a. 1866	blue		
1 a. "	black		
4 a. "	dark slate		



3 p. 1866	black	15	
6 p. "	blue	20	
1 a. "	orange	25	
2 a. "	yellow	50	
4 a. "	green	75	
8 a. "	red	1 50	



CEYLON, A.

12 PENCE = 1 SHILLING, AND 100 CENTS = 1 RUPEE.



Head of Victoria. Rectangular.

1/2 p. 1857	lilac	5	
1 p. "	blue		5
2 p. "	green		10
4 p. "	(oct.) rose		10
5 p. "	chocolate		25
6 p. "	brown		10
8 p. "	(oct.) brown		20
9 p. "	(") "		20
10 p. "	red		10
1 s. "	violet		10
1 s. 9d. 1857	(oct.) green		10
2 s. 1857	blue		10
5 p. 1864	green		15
2 p. 1867	yellow		10
3 p. "	rose		10
1 p. 1869	(t 237) blue	8	5



New Used

Name, Various Frames.

2 c. 1872	brown	6	5
4 c. "	pearl grey	10	3
8 c. "	(t 238) orange	25	5
16 c. "	mauve	50	10
24 c. "	green	75	8
36 c. "	(t 239) blue	1 00	10
48 c. "	rose	1 25	5
96 c. "	slate	2 00	5

ENVELOPE STAMPS.



Various Shapes.

1 p. 1861	blue		
2 p. "	green		
4 p. "	rose		
5 p. "	brown		
6 p. "	(cir.) violet		
8 p. "	(oct.) chocolate		
9 p. "	(rect.) violet		
1 s. "	(cir.) yellow		
1 s. 9 p. 1861	(rect.) green		
2 s. 1861	(t 240) blue		
10 p. 1869	(oval) red		
4 c. 1871	(t 241) blue		

CHILI, S. A.

100 CENTAVOS = 1 PESO.



5 c. 1852	blue pp. red	75	15
10 c. "	" blue		
1 c. 1855	yellow	10	10
5 c. 1852	red	25	6
10 c. "	blue	45	8
20 c. 1855	green	75	10



1 c. 1868	orange	7	
2 c. 1867	black	10	
5 c. 1868	red		5
10 c. "	blue		5
20 c. "	green		5



ENVELOPE STAMPS.

New Used

- 2 c. 1874, (t 242) brown
- 5 c. " (t 243) purple 25
- 10 c. " (t 244) blue 50
- 15 c. " (t 245) pink 75
- 20 c. " (t 246) green 1 00

CONFEDERATE STATES, N. A.

100 CENTS = 1 DOLLAR.

These stamps were issued in 1861 by the postmasters of the different cities, and are now very scarce.

PROVISIONAL STAMPS.

Issued 1861.

Athens, Ga.

- 5 c. (t 247) purple

Baton Rouge, La.

- 5 c. (t 248) red

Charleston, S. C.

- 5 c. (t 249) blue
- 5 c. env. (t 250) blue

Columbia.

- 5 c. env. (t 251) blue

Fredericksburg, Va.

- 5 c. (t 252) blue
- 10 c. red

Goliad, Tex.

- 5 c. (t 253) black
- 10 c. "

Greenville, Ala.

- 5 c. (t 254) red, blue

Knoxville, Tenn.

- 5 c. (t 255) black
- 5 c. (t 256) red 1 00 1 00
- 10 c. (t 256) blue
- 5 c. env. (t 255) green

Livingston, Ala.

- 5 c. (t 257) blue

Lynchburg, Va.

- 5 c. (t 258) blue

Macon, Ga.

- 5 c. (t 259) blue
- 5 c. green

Madison, Fla.

- 3 c. (t 260) gold

Marion, Va.

- 2 c. (t 261) black
- 3 c. "
- 5 c. "
- 10 c. "
- 15 c. "
- 20 c. "

Memphis, Tenn.

- 2 c. (t 262) blue 1 00
- 5 c. (t 263) red 1 00
- 5 c. env. (t 263) red

Mobile, Ala.

New Used

- 2 c. (t 264) black
- 5 c. blue 4 00

Nashville, Tenn.

- 3 c. (t 266) red 1 00
- 5 c. (t 265) crimson
- 10 c. red

New Orleans, La.

- 2 c. (t 267) blue
- 2 c. red
- 5 c. (t 268) brown 50
- 5 c. red
- 5 c. brown on blue 50

Petersburg, Va.

- 5 c. (t 269) red 5 00

Pleasant Shade.

- 5 c. (t 270) blue

Rheatown, Tenn.

- 5 c. (t 271) red

Statesville, N. C.

- 5 c. env. (t 272) black 1 00

Salem, N. C.

- 5 c. env. (t 273) black

GENERAL ISSUE.

Different Heads. Large Rect.

- 5 c. 1861, (t 274) green 50 15
- 10 c. " (t 275) blue 1 00 25
- 2 c. 1862, (t 276) green 1 00 1 00
- 5 c. " (t 274) blue 30 15
- 10 c. " (t 275) rose 1 00 100

Different Heads. Small Rect.

- 1 c. 1862, (t 277) orange 10
- 2 c. 1863, (t 278) rose 5
- 5 c. " (t 277) blue 5 2
- 10 c. " (t 279) " 3 2
- 10 c. " (t 280) " 1 00
- 20 c. " " green 3
- 10 c. " var. blue 25



CORRIENTES, S. A.

See Argentine Republic.



COSTA RICA, S. A.

8 REALES = 1 PESO.



- 1/2 r. 1863, blue 15 10
- 2 r. " red 40 4
- 4 r. 1864, green 90 20
- 1 p. " orange 1 75 40

CUNDINAMARCA, S. A.

See United States of Colombia.

DANISH WEST INDIES.

100 CENTS = 1 DOLLAR.



New Used

- 3 c. 1855, red 15 10
- 3 c. 1867, rose 10 5
- 4 c. 1873, ultramarine



- 1 c. 1873, green 5
- 3 c. " and violet blue 5
- 4 c. " and carmine 10 5
- 7 c. 1874, brown and blue 10 5
- 14 c. 1873, lilac and orange 15
- 14 c. 1873, lilac and green 25



DANUBIAN PRINCIPALITIES, E.

See Roumania.



DECCAN, A.

16 ANNAS = 1 RUPEE.



- 1 a. 1868, green 50



- 1/2 a. 1870, brown 50
- 2 a. " green 50



New Used

1/2 a.	1871,	red	6
1 a.	"	violet black	10
2 a.	"	green	20
3 a.	"	brown	30
4 a.	"	slate	40
8 a.	"	dark brown	
12 a.	"	pale blue	

DENMARK, E.

96 SKILLINGS = 6 MARK = 1 RIGSDA-
LER = 200 ORE = 2 CROWNS.
2 r. s. 1851, (t 281) blue) 30



4 r. s.	1851,	brown	3
2 s.	1853,	blue	8
4 s.	"	brown	3
8 s.	"	green	5
4 s.	1857,	brown	15
8 s.	"	green	5
16 s.	"	lilac	5



2 s.	1865,	blue	5
3 s.	"	violet	3
4 s.	1864,	red	3
8 s.	1868,	brown	3
16 s.	1864,	slate	5



2 s.	1871,	blue & slate	5	3
3 s.	"	purple "	10	3
4 s.	"	carmine "	10	3
8 s.	"	brown "	20	5
16 s.	"	green "	30	5
48 s.	"	violet & brown	75	15
3 o.	1874,	grey & blue		3
4 o.	"	blue & slate		3
8 o.	"	red "		3
12 o.	"	purple "		3
16 o.	"	brown "		3
25 o.	"	green "		5
50 c.	"	violet "	br'n	10
20 a.	1875,	slate & red		3

OFFICIAL STAMPS.



New Used

2 s.	1871,	blue	5
4 s.	"	carmine	10
16 s.	"	green	20
3 o.	1874,	grey	5
4 o.	"	blue	3
8 o.	"	red	2
32 o.	"	green	10

ENVELOPE STAMPS.



2 s.	1865,	blue	10
4 s.	"	red	10
4 s.	"	(no S) "	5
2 s.	1869,	blue	10
4 o.	1874,	"	
8 o.	"	red	5

NEWSPAPER BANDS.

Same as Adhesive.

2 s.	blue	5
4 s.	carmine	
4 o.	1874,	blue



DOMINICA, W. I. I.

12 PENCE = 1 SHILLING.
Head. Queen in Centre.

1 p.	1874,	lilac	6	5
6 p.	"	green		15
1 s.	"	saffron		

DUTCH EAST INDIES, O.

100 CENTS = 1 FLORIN.

10 c.	1864, (t 282)	carmine	25	15
-------	---------------	---------	----	----



5 c.	1870,	green	10	5
10 c.	"	bistre	15	3
20 c.	"	ultramarine	20	10
50 c.	"	carmine	10	3
1 c.	1874,	olive	5	2
15 c.	"	bistre	15	10
25 c.	"	violet	25	10
2 g.	50 c. 1874,	green and violet	2 00	15
2 c.	1876,	chocolate		10
2 1/2 c.	"	orange		10

UNPAID LETTER STAMPS.



New Used

5 c.	1874,	yellow	
10 c.	"	green	15
20 c.	"	blue	25
15 c.	1876,	orange	20

DUTCH WEST INDIES, W. I. I. Suriname.



2 1/2 c.	1873,	carmine	10
3 c.	"	green	15
5 c.	"	violet	
10 c.	"	bistre	
25 c.	"	blue	
50 c.	"	red brown	

Curaco.



2 1/2 c.	1873,	green	10
3 c.	"	grey	15
5 c.	"	carmine	
10 c.	"	blue	
25 c.	"	orange	
50 c.	"	violet	



ECUADOR, S. A.

8 REALES = 1 PESO.



1/2 r.	1865,	blue	15	15
1 r.	"	buff	20	10
1 r.	"	green		30
4 r.	1866,	red		50
1 r.	1873,	buff		50
		on blue		50



			New Used	
1/2 r.	1873,	blue	25	10
1 r.	" (1283)	orange	25	5
1 p.	"	pink		40

EGYPT, AF.

40 PARAS = 1 PIASTRE.



5 pa.	1865,	sea green		
10 pa.	"	brown	10	
20 pa.	"	blue	20	
1 pi.	"	lilac	30	15
2 pi.	"	yellow	40	
5 pi.	"	rose	75	
10 pi.	"	dark slate	100	



5 pa.	1867,	yellow	5	5
10 pa.	"	lilac	10	10
20 pa.	"	green	12	12
1 pi.	"	red	20	5
2 pi.	"	blue	40	
5 pi.	"	brown	75	



5 pa.	1872,	brown	3	3
10 pa.	"	mauve	8	5
20 pa.	"	blue	12	6
1 pi.	"	red	20	5
2 pi.	"	yellow	40	10
2 1/2 pi.	"	purple	60	25
5 pi.	"	green	70	25

OFFICIAL STAMPS.

Egyptian Characters in Circle.

NOTE.—There are about 200 varieties of these stamps, at 10 cents each.



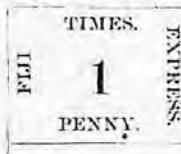
FERNANDO PO, AF.
100 CENTIMOS = 1 ESCUDO.



20 c. de c. 1871, brown

FIJI ISLANDS, O

12 PENCE = 1 SHILLING,
AND 100 CENTS = 1 DOLLAR.



1 p.	1871,	black		
		on pink		
3 p.	"	"		
6 p.	"	"		
9 p.	"	"		
1 s.	"	"		



1 p.	1872,	blue	10	
3 p.	"	green	25	
6 p.	"	rose	50	

New Value Surcharged Across.

2 c.	1872,	blue	10	
6 c.	"	green	25	
12 c.	"	rose	50	

Surcharged V. R.

2 c.	1875,	blue		
6 c.	"	green		
12 c.	"	rose		

FINLAND, E.

100 KOPECS = 1 RUBLE AND 100 PENNIA = 1 MARK.



5 k.	1856,	blue	50	
10 k.	"	rose	10	



			New Used	
5 k.	1860,	blue	10	
10 k.	"	rose	10	
5 p.	1866,	violet	8	5
8 p.	1867,	green	10	5
10 p.	1868,	buff	15	5
20 p.	"	blue	20	5
40 p.	"	rose	40	5
1 m.	1867,	buff	75	25



2 p.	1875,	grey	5	
5 p.	"	orange		5
8 p.	"	green		5
10 p.	"	violet		5
20 p.	"	blue		5
32 p.	"	rose		5

ENVELOPE STAMPS.

10 k.	1845,	oval rose	1	50
20 k.	"	blue		

Same as Same Date Adhesives.

5 k.	1856,	blue	50	
10 k.	"	rose	10	
20 k.	"	black		
5 k.	1860,	blue	20	10
10 k.	"	rose		
20 p.	1871,	blue	15	
40 p.	"	rose	25	

LOCAL STAMPS.

Helsingfors.

10 p.	1861, (t285)	red and green		
10 p.	1866,	red & green	15	10
10 p.	1868, (t286)	blue and brown	15	10
10 p.	1871,	red & green	12	

Tammersfors.

12 p.	1866,	blue and green	15	
-------	-------	----------------	----	--



FRANCE, E.
100 CENTIMES = 1 FRANC.



		New	Used
10 c. 1850,	buff	75	10
15 c. "	green	1 00	6
20 c. 1848,	black	75	6
25 c. "	blue	75	2
40 c. 1849,	vermillion	1 25	6
1 f. "	crimson	2 00	6
1 f. "	vermillion		



10 c. 1852,	buff	1 50	10
25 c. "	blue	1 50	5



10 c. 1853,	yellow		2
25 c. "	blue		15
40 c. "	orange		5
80 c. "	lake		5
1 f. "	"		25

<i>Perforated.</i>			
1 c. 1860,	olive green	2	1
5 c. 1856,	green	4	2
10 c. 1862,	buff	6	1
20 c. 1856,	blue	10	1
40 c. 1853,	orange	1	1
80 c. 1856,	pink		1



1 c. 1870,	olive green	2	1
2 c. 1863,	brown	2	1
4 c. "	lavender	3	2



10 c. 1867,	buff	6	1
20 c. "	blue	15	1
30 c. "	brown	25	1
40 c. 1868,	orange	20	2
80 c. 1867,	rose	30	1
5 f. 1869, (t 287)	violet		15



Lithographed and Unperforated.

		New	Used
1 c. 1871,	olive green	3	5
2 c. "	brown	3	5
4 c. "	lavender	5	5
5 c. "	green	5	5
10 c. "	buff	10	5
20 c. "	blue	15	5
30 c. "	brown	20	5
40 c. "	orange	25	5
80 c. "	carmine	60	10

Engraved and Perforated.

1 c. 1872,	olive green	2	1
2 c. "	brown	2	1
4 c. "	lavender	3	1
5 c. "	green	3	1
10 c. "	buff	10	5
15 c. "	"	10	2
20 c. "	blue	12	5
25 c. "	"	15	1
40 c. "	orange	20	1
10 c. 1873,	brown		
	on pink	10	5

Larger Figures of Value.

30 c. 1872,	brown	20	2
80 c. "	pink	30	3
15 c. 1874,	buff	10	1
10 c. 1875,	brown		
	on pink	10	2



1 c. 1876,	green		
2 c. "	"		
4 c. "	"		
5 c. "	"		
10 c. "	"		
15 c. "	mauve		
20 c. "	brown		
25 c. "	blue		
30 c. "	bistre		
40 c. "	red		
75 c. "	carmine		
1 f. "	g'n bronze		
5 f. "	lilac		

UNPAID LETTER STAMPS.



10 c. 1859, (dith.)	black		
10 c. "	"	10	10
15 c. "	"	10	10
25 c. 1871,	"		
40 c. "	blue		
60 c. "	yellow		



FRENCH COLONIES.
W. I. I.

100 CENTIMES = 1 FRANC.



1 c. 1862,	olive green		5
5 c. "	green		5
10 c. 1860,	buff		5
20 c. 1866,	blue		10
40 c. 1860,	orange		5
80 c. 1866,	rose		15

New Used

New Used

New Used

GAMBIA, AF.
12 PENCE = 1 SHILLING.



4 p.	1869,	brown	25
6 p.	"	blue	40

GERMANY, E.

30 SILBER GROSCHEN = 1 THALER,
60 KREUZERS = 1 GULDER,
100 PFENNIG = 1 MARK.

Thurn und Taxis.



Colored Paper.

$\frac{1}{4}$ s.	s. p.	1852,	brown	25
$\frac{1}{3}$ s.	s. p.	1858,	flesh	10
$\frac{1}{2}$ s.	s. p.	1852,	green	10
1	s. p.	"	blue	5
2	s. p.	"	rose	5
3	s. p.	"	yellow	5

White Paper.

$\frac{1}{4}$ s.	s. p.	1859,	red	5
$\frac{1}{2}$ s.	s. p.	"	green	10
1	s. p.	"	blue	5
2	s. p.	"	rose	3
3	s. p.	"	red brown	3
5	s. p.	"	violet	10
10	s. p.	"	orange	25
$\frac{1}{4}$ s.	s. p.	1864,	black	5
$\frac{1}{3}$ s.	s. p.	1862,	green	3
$\frac{1}{2}$ s.	s. p.	"	orange	5
1	s. p.	"	rose	2
2	s. p.	"	blue	2
3	s. p.	"	light brown	2

ENVELOPE STAMPS.

Figure in Oval.

$\frac{1}{2}$ s.	s. p.	1861,	orange	5
1	s. p.	"	rose	5
2	s. p.	"	blue	5
3	s. p.	"	brown	5
$\frac{1}{4}$ s.	s. p.	1866,	black	5



Colored Paper.

1 k.	1852,	green	5
3 k.	"	blue	5
6 k.	"	rose	3
9 k.	"	yellow	3

White Paper.		Now Used
1 k. 1859,	green	3
3 k. "	blue	5
6 k. "	rose	5
9 k. "	yellow	3
15 k. "	violet	5
30 k. "	orange	10
3 k. 1862,	rose	3
6 k. "	blue	3
9 k. "	brown	2

ENVELOPE STAMPS.

Figure in Octagon.

2 k. 1862,	yellow	5
2 k. "	rose	5
6 k. "	blue	5
9 k. "	brown	3
1 k. 1866,	green	5

North German Postal District.



4 g. 1868,	mauve	5
13 g. "	green	5
12 g. "	orange	2
1 g. "	rose	1
2 g. "	blue	1
5 g. "	bistre	2
10 g. 1869, (t. 289)	slate	5
30 g. "	1 289 blue	5

Figure of Value, in Oval.

1 k. 1868,	green	3
2 k. "	orange	5
3 k. "	rose	3
7 k. "	blue	2
18 k. "	bistre	5

OFFICIAL STAMPS.



14 g. 1870,	flesh	5
13 g. "	"	5
12 g. "	"	5
1 g. "	"	5
2 g. "	"	5
1 k. "	grey	3
2 k. "	"	3
3 k. "	"	3
7 k. "	"	3

ENVELOPE STAMPS.

Same as Adhesive.

1 g.	pink	5
3 k.	"	10

Adhesive Stamps pasted over envelopes of Prussia, Saxony, Brunswick, Oldenburg, and Mecklenburg Ströbitz, and printed over with a pale drab design, composed of "Norddeutscher Post Bezirk," many times repeated.

1 g. 1868	rose	
2 g. "	blue	
3 k. "	rose	

NEWSPAPER BANDS.

	Now Used	
1/3 g. 1868	green	3
1 k. "	"	5

EMPIRE.



1/3 g. 1871,	mauve	5
1/2 g. "	green	5
1/2 g. "	orange	1
1 g. "	rose	1
2 g. "	blue	2
5 g. "	stone	2
1 k. "	green	2
2 k. "	orange	5
3 k. "	rose	1
7 k. "	blue	1
18 k. "	stone	5

Like Types 288-9, Inscribed "Deutsche Reichs-post."

10 g. 1871,	slate	5
30 g. "	blue	5



1/4 g. 1872,	mauve	2
1/3 g. "	green	2
1/2 g. "	orange	2
1 g. "	rose	2
2 g. "	blue	1
2 1/2 g. "	brown	1
5 g. "	stone	2
2 1/2 g. 1874,	brown	2
1 k. 1872,	green	2
2 k. "	orange	10
3 k. "	rose	1
7 k. "	blue	1
9 k. "	brown	2
18 k. "	stone	10
9 k. 1874,	brown	10



3 p. 1875,	green	3
5 p. "	violet	3



	Now Used	
10 p. 1875,	rose	2
20 p. "	blue	2
25 p. "	brown	2
50 p. "	grey lilac	3
2 m. "	obl. violet	5

ENVELOPE STAMPS.

Same as Adhesive.

1 g. 1871,	rose	3
3 k. "	"	3
1/4 g. 1873,	mauve	
1/3 g. "	green	
1/2 g. "	orange	
1 g. 1872,	rose	
2 g. 1873,	blue	
2 1/2 g. "	brown	
5 g. "	stone	
1 k. "	green	
2 k. "	orange	
3 k. 1872,	rose	
7 k. 1873,	blue	
9 k. "	brown	
18 k. "	stone	
10 p. 1875,	rose	

NEWSPAPER BANDS.

1/3 g. 1871,	green	3
1 k. "	"	3
1 k. 1872,	"	3
1/3 g. "	"	3
3 p. 1875,	"	3

Alice and Lorraine.

100 CENTIMES = 1 FRANC.



Found also with Inverted Back ground.

1 c. 1870,	green	3
2 c. "	brown	
4 c. "	grey	
5 c. 1871,	green	10
10 c. 1870,	bistre	10
20 c. "	blue	20
25 c. 1871,	brown	25

GOLD COAST, AF.

12 PENCE = 1 SHILLING.



1 p. 1875,	blue	
4 p. "	pink	
6 p. "	orange	

GREAT BRITAIN, E.
12 PENCE = 1 SHILLING,



- 1 p. 1840, black 60 5
- 2 p. " blue 75 10
- 1 p. 1841, red 10 2
- White Lines Above and Below.
- 2 p. 1841, blue 15 3



- Embossed Head to Left in Octagon.*
- 6 p. 1847, violet 1 50 8
 - 10 p. 1848, (t 290) brown 1 50 20
 - 1 s. 1854, green 2 00 3



- Plain Corners.*
- 4 p. 1855, vermilion 30 3
 - 6 p. 1856, lilac 35 2
 - 1 s. " green 60 2



- Letters in all Corners.*
- 1/2 p. 1870, (t 291) red 2 1
 - 1 p. 1864, " 4 1
 - 1 1/2 p. 1870, (t 292) " 5 2
 - 2 p. 1858, blue 10 1
 - 3 p. 1862, rose 15 5
 - 4 p. " vermilion 20 3
 - 6 p. " lilac 30 2
 - 9 p. " bistre 50 2
 - 1 s. " green 50 10



- Large Letters in Corners.*
- 3 p. 1865, rose 15 1
 - 4 p. " vermilion 20 2
 - 6 p. " lilac 25 1
 - 9 p. " bistre 40 3
 - 10 p. 1867, brown 50 3
 - 1 s. 1865, green 50 1
 - 2 s. 1867, blue 75 2
 - 5 s. " (t 293) rose 1 50 5
 - 6 p. 1872, brown 25 2
 - 6 p. 1873, slate 25 2

- Colored Letters in Corners.*
- 2 1/2 p. 1876, claret 10 1
 - 3 p. 1873, rose 15 1
 - 4 p. 1876, red 20 2
 - 6 p. 1874, slate 30 1
 - 1 s. 1873, green 50 1

ENVELOPE STAMPS.



- 1 p. 1841, pink 5
- 2 p. " blue 5
- 1 p. 1840, (t 294) bl'k " blue
- 2 p. " " blue
- With Date.*
- 1 p. 1841, pink 4
- 2 p. " blue 12
- 3 p. 1862, (t 295) rose 20
- 4 p. 1855, (t 296) vermilion 25
- 6 p. " (t 297) lilac 35
- 1 s. " (t 298) green 70
- 1 1/2 p. 1872, (t 299) pink 10
- 1 1/2 p. 1875, " brown 10

COMPOUND ENVELOPES.

- 5 p. red & pink
- 7 p. " " rose
- 8 p. " " red
- 9 p. violet & rose
- 10 p. " " red
- 1 s. 1 p. green & pink
- 1 s. 2 p. " " blue
- 1 s. 3 p. " " rose
- 1 s. 4 p. " " red
- 1 s. 6 p. " & violet
- 2 s. " " green

NEWSPAPER WRAPPERS.

- 1/2 p. 1871, (t 300) green 5
- 1/2 p. " " 2 2

GREECE, E.

100 LEPTA = 1 DRACHM



- 1 l. 1861, brown 25
- 2 l. " cinnamon
- 5 l. " green

- 20 l. 1861, blue 25
- 40 l. " violet
- 80 l. " rose
- 1 l. 1863, brown 2
- 2 l. " cinnamon 4

Large Figure on Back.

- 10 l. 1861, orange
- Figure on Back.*
- 5 l. 1863, green 10 5
- 10 l. " orange 3 3
- 20 l. " blue 2 2
- 40 l. " violet 5 5
- 80 l. " rose 5 5
- 30 l. 1876, brown 5 5
- 60 l. " green 5 5

UNPAID LETTER STAMPS.



- 1 l. 1875, black & green 2
- 2 l. " " " 2
- 5 l. " " " 3
- 10 l. " " " 5
- 20 l. " " " 10
- 40 l. " " " "
- 60 l. " " " "
- 70 l. " " " "
- 80 l. " " " "
- 90 l. " " " "
- 1 d. " " " "
- 2 d. " " " "

New Used

New Used

New Used

GRENADA, W. I. I.
12 PENCE = 1 SHILLING.



1 p. 1860,	green	5
6 p. "	red	10
1 s. 1876,	violet	75



GUATEMALA, S. A.
100 CENTAVOS = 8 REALES.
" " = 1 PESO.



1 c. 1871,	bistre	
5 c. "	brown	10
10 c. "	blue	10
20 c. "	rose	15
4 r. 1872, (t301)	violet	
1 p. "	yellow	



1/4 r. 1875,	black	10
1/2 r. "	green	15
1 r. "	(t 600) blue	30
2 r. "	red	60

ENVELOPE STAMPS.



1/4 r. 1875,	black	15
1/2 r. "	green	25
1 r. "	blue	35
2 r. "	red	75

HAMBURG, E.

16 SCHILLINGS = 1 MARK.



		New	Used
1/2 s. 1859	black	3	3
1 s. "	brown	5	3
2 s. "	red	7	3
3 s. "	blue	10	10
4 s. "	green	10	3
7 s. "	orange	10	10
9 s. "	yellow	25	5
1 1/4 s. 1864,	violet	6	4
2 1/2 s. "	green	10	5
7 s. 1865,	violet	10	3
1 1/4 s. 1866, (t 302)			
	purple	5	5
1 1/2 s. "	rose	6	4
2 1/2 s. 1867,	green	10	3
	brown	5	3

ENVELOPE STAMPS.

Similar to Adhesives.

1/2 s. 1866,	black	5
1 1/4 s. "	violet	20
1 1/2 s. "	rose	6
2 s. "	orange	8
3 s. "	blue	12
4 s. "	green	15
7 s. "	violet	20

LOCAL STAMPS.

116 varieties, the set 50

HANOVER, E.

10 PFENNIGE = 1 GROSCHEN,
30 SILBER GROSCHEN = 24 GUTE
GROSCHEN = 1 THALER.



1 g.g. 1850. (t 303)		
	blue	15
3 p. 1853, (t 304)	red	5
1 g.g. 1851, (t 303)		
	green	5
1-30 t. "	red	10
1-15 t. "	blue	10
1-10 t. "	yellow	10
<i>Same, on Ground of Small Network.</i>		
3 p. 1859,	red	
1-10 t. "	yellow	35 25
<i>Same, Network Larger</i>		
3 p. 1859,	red	15
1 g.g. "	green	5
1-30 t. "	red	6
1-15 t. "	blue	10
1-10 t. "	yellow	10

Head, George V.

1 g. 1859,	red	10	2
2 g. "	blue	5	5
3 g. "	yellow	7	7
10 g. "	green	15	15
3 g. 1861,	brown	3	3
1 1/2 g. 1860, (t 305) blk		10	5
3 p. 1864,	green	10	5

ENVELOPE STAMPS.

New Used

3 p. 1857,	white	
1 g.g. "	green	15
1 s.g. "	rose	10
2 s.g. "	blue	15
3 s.g. "	orange	20
1 g. 1858		15
2 g.g. "	rose	5
3 g.g. "	blue	20
3 g.g. "	brown	25
3 g.g. "	yellow	75
Trefoil, 1858, (t 306)		
	green	10
Horse, 1861, (t 307) "		10

HELICOLAND, E.

16 SCHILLINGS = 1 MARK.
100 PFENNIGE = 1 MARK



1/2 s. 1867, green		5
	& rose	5
1 s. " " " "		10
2 s. " " " "		15
6 s. " " " "		25
1/4 s. 1873, " " " "		10
3/4 s. " " " "		10
1 1/2 s. " " " "		10
1/4 s. " " " "		10



1 p. 1875, green & rose		3
2 p. " " " "		5
5 p. " " " "		5
10 p. " " " "		10
25 p. " " " "		20
50 p. " " " "		35



3 pf. 1876,	green	
20 pf. "	carmine	

ENVELOPE STAMPS.

Same Design.

10 p. 1875,	rose	10
-------------	------	----

HOLLAND, E.
100 CENTS = 1 FLORIN.



New Used

5 c. 1852,	blue	3
10 c. "	red	4
15 c. "	orange	8



5 c. 1865,	blue	5
10 c. "	red	2
15 c. "	orange	3



5 c. 1867,	blue	1
10 c. "	red	1
15 c. "	brown	3
20 c. "	green	2
25 c. "	violet	3
50 c. "	gold	5



1 c. 1869,	black	5
1 1/2 c. "	pink	5
2 c. "	yellow	3
1 c. "	green	3
1 1/2 c. 1871	brown	2
2 1/2 c. "	violet	5



5 c. 1872,	blue	2
10 c. "	carmine	2
15 c. "	brown	3
20 c. "	green	3
25 c. "	violet	5
50 c. "	buff	5
2 g. 50 c. 1872, (t 308)	blue and pink	25

12 ¹ / ₂ c. 1875,	grey 10	2
ENVELOPE STAMPS.		
<i>Same as Adhesive.</i>		
5 c. 1876,	blue 10	
12 ¹ / ₂ c. "	grey 15	5

UNPAID LETTER STAMPS.



5 c. 1870, brown	on yellow	10	10
10 c. "	carmine	on blue	

New Used

HONDURAS, S. A.

8 REALES = 1 PESO.



2 r. 1865,	green	25	15
2 r. "	pink	50	25



HONG KONG, A.

100 CENTS = 1 DOLLAR.



2 c. 1862,	brown	5	2
4 c. 1863,	slate	10	2
6 c. "	lilac		2
8 c. 1862,	yellow	15	2
12 c. "	blue		5
18 c. "	violet		15
24 c. "	green		3
30 c. 1863,	vermillion		
48 c. 1862,	rose		5
96 c. "	slate		5
96 c. 1865,	yellow		
30 c. 1871,	violet		3



HUNGARY, E.

100 KREUZERS = 1 FLOLIN.



2 k. 1871,	orange	10	5
3 k. "	green	13	5
5 k. "	rose	15	2
10 k. "	blue		3
15 k. "	brown		10
25 k. "	violet		10

New Used

Lithographed.

2 k. 1871,	orange	15
3 k. "	green	25
5 k. "	rose	10
10 k. "	blue	15
15 k. "	brown	15
25 k. "	violet	10



2 k. 1874,	violet	5	5
3 k. "	green	8	5
5 k. "	red	10	2
10 k. "	blue	15	3
20 k. 1876,	black		

NEWSPAPER STAMPS.

Various Designs.

1 k. 1869, (t309)	blue	5
2 k. "	(t310) brown	10
1 k. 1873, (t311)	red	5
2 k. 1872, (t312)	"	2
1 k. 1874,	"	3
1 k. "	blue	
1 k. "	"	

ENVELOPE STAMPS.

Same as Adhesive.

3 k. 1871,	green		5
5 k. "	red		
10 k. "	blue		
15 k. "	brown		
3 k. 1874,	green		
5 k. "	carmine		
10 k. "	blue		

NEWSPAPER BANDS.

2 k. 1871,	orange
2 k. 1874,	lilac

ICELAND, E.

100 SKILLINGS = 1 RIX DALEH.



2 s. 1873,	blue	5
3 s. "	grey	10
4 s. "	rose	10
8 s. "	brown	20
16 s. "	yellow	35

New Used

5 a. 1876,	blue
6 a. "	grey
10 a. "	carmine
16 a. "	brown
24 a. "	lilac
40 a. "	green

OFFICIAL STAMPS

4 s. 1873,	green	10
8 s. "	mauve	25

Numeral on Shield.

10 a. 1876,	blue
16 a. "	carmine
30 a. "	green

INDIA, A.

16 ANNAS = 1 RUPEE.



1/2 a. 1854, rect.	blue	25
1 a. "	red	10
2 a. "	(t 313)	
	green	15
4 a. "	(t 314)	
	red and blue	10



Blue Paper.

1 a. 1858,	brown	6
4 a. "	black	
8 a. "	rose	5

White Paper

8 p. 1860,	lilac	2
1/2 a. "	blue	3
1 a. "	brown	2
2 a. "	pink	8
4 a. "	black	3
8 a. "	rose	2
2 a. 1865,	yellow	2
4 a. "	green	8
4 a. 1866, (t 315)	"	3
6 a. s p. 1867, (t 316)	slate	7
1 r. 1874,	"	5

Adapted from Revenue Stamps.

2 a. 1866,	violet	
1 a. 1867, (t 317)	"	25
6 a. "	"	25
6 a. "	va.	
8 a. "	(t 318)	

ENVELOPE STAMPS.

Head in Circle.

1/2 a. 1857,	blue	15	10
1 a. "	brown	20	10

IONIAN ISLES, E.

100 OBOLI = 1 DOLLAR.



New Used

- 1 o. 1859, yellow
- 2 o. " blue
- 4 o. " red

ITALY, E.

100 CENTESIMI = 1 LIRA.



- 5 c. 1851, black
- 20 c. " blue
- 40 c. " red



- 5 c. 1853, green
- 20 c. " blue
- 40 c. " red

White Head.

- 5 c. 1855, green
- 20 c. " blue
- 40 c. " red

White Letters.

- 5 c. 1858, green 6 4
- 10 c. " buff 6 3
- 15 c. 1863, blue 10 4
- 20 c. 1858, " 5 3
- 40 c. " red 5 5
- 80 c. " orange 10 5
- 3 l. 1860, bronze 20 20



- 15 c. 1863, (t 319) blue 5 2
- 5 c. 1864, slate 5 1
- 10 c. " buff 10 1
- 15 c. 1865, blue 15 2
- 20 c. 1864, " 20 1
- 30 c. " brown 20 2
- 40 c. " rose 25 2
- 60 c. " lilac 30 2
- 2 l. 1867, red 3 3
- 20 c. " (t 320) blue 15 1

UNPAID LETTER STAMPS.

Figure in Centre.

New Used

- 10 c. 1863, yellow 10
- 10 c. 1869, (t.321) buff 10



- 1 c. 1870 orange 3
- 2 c. " " 5 3
- 5 c. " " 10 5
- 10 c. " " 20 10
- 30 c. " " 20 10
- 40 c. " " 25 10
- 50 c. " " 30 10
- 60 c. " " 40 15
- 1 l. " blue 80 25
- 2 l. " " 80 25
- 5 l. 1874, " "
- 10 l. " " "

NEWSPAPER STAMPS.

Figure in Centre.

- 1 c. 1857, black 3 3
- 2 c. " buff 5 5
- 2 c. " black 5 5
- 1 c. 1863, (t 322) green 3 2
- 2 c. " brown 5 2

OFFICIAL STAMPS.



- 2 c. 1874, lake 5 5
- 5 c. " " 5 5
- 20 c. " " 5 5
- 30 c. " " 10 10
- 1 l. " " 10 10
- 2 l. " " 25 25
- 5 l. " " 50 50
- 10 l. " " "
- 50 l. " " "
- 100 l. " " "

FOR FOREIGN OFFICES.

Altered from Regular Issue, and Surcharged "Estero."

- 1 c. 1874, green
- 2 c. " brown
- 5 c. " green
- 10 c. " buff
- 20 c. " blue
- 30 c. " brown
- 40 c. " rose
- 60 c. " violet
- 2 l. " red

JAMAICA, W. I. I.

12 PENCE = 1 SHILLING.



New Used

- 1/2 p. 1872, (t 323) claret 5 5
- 1 p. 1860, blue 6 2
- 2 p. " rose 12 4
- 3 p. 1863, green 18 5
- 4 p. 1860, vermilion 25 5
- 6 p. " lilac 35 1
- 1 s. " brown 70 3
- 2 s. 1875, claret
- 5 s. " mauve



New Used

New Used

New Used

JAPAN, A.

100 TENPOES OR SENS = 1 DOLLAR.



- $\frac{1}{2}$ t. 1871, brown
- 1 t. " (t. 324) blue
- 2 t. " (t. 325) vermilion
- 3 t. " (t. 326) green



- $\frac{1}{2}$ t. 1872, brown
- 1 t. " blue
- 2 t. " vermilion
- 3 t. " green



Similar to Cut.

- | | | | |
|------------------------|-----------|----|----|
| $\frac{1}{2}$ s. 1873, | brown | 10 | |
| 1 s. " | blue | 10 | 10 |
| 2 s. " | vermilion | | |
| 2 s. " | yellow | 10 | 10 |
| 4 s. " | rose | 15 | 10 |
| 6 s. 1874, | brown | 25 | 10 |
| 10 s. 1873, | green | 30 | 15 |
| 20 s. " | mauve | 50 | 25 |
| 30 s. " | slate | 75 | 25 |
| $\frac{1}{2}$ s. 1875, | slate | 10 | |
| 1 s. " | brown | 10 | 10 |
| 4 s. " | green | 10 | 10 |
| 6 s. " | orange | | 10 |
| 10 s. " | blue | | 15 |
| 20 s. " | rose | | 25 |
| 30 s. " | violet | | 20 |
| 5 s. 1876, | green | | 10 |



Similar to Cut.

- | | | | |
|-------------|---------|------|---|
| 12 s. 1875, | rose | 30 | 2 |
| 15 s. " | lilac | 40 | 1 |
| 45 s. " | carmine | 1 00 | 3 |



- 1 s. 1876, black
- 2 s. " olive

ENVELOPE STAMPS.

Same as adhesives.

- 1 s. 1875, blue
- 2 s. " yellow
- 4 s. " rose
- 6 s. " brown

NEWS BAND.

- 2 r. 5 m. 1875, red

Lagos, Af.

12 PENCE = 1 SHILLING.



	New Used	
1 p. 1874,	lilac	
2 p. "	blue	
3 p. "	brown	
4 p. "	rose	
6 p. "	green	
1 s. "	orange	

LIBERIA, AF.

100 CENTS = 1 DOLLAR.



6 c. 1860,	red	25
12 c. "	blue	25
24 c. "	green	50
<i>Same, with Outer Line.</i>		
6 c. 1866,	red	
12 c. "	blue	
24 c. "	green	

LUBECK, E.

16 SCHILLINGS = 1 MARK.



1/2 s. 1859,	lilac	5
1 s. "	orange	6
2 s. "	brown	7
2 1/2 s. "	pink	8
4 s. "	green	10



1/2 s. 1863,	green	5
1 s. "	orange	5
2 s. "	crimson	6
2 1/2 s. "	blue	8
4 s. "	brown	10
1 1/4 s. 1864, (t 327)	brown	5
1 1/2 s. 1866, (t 328)	lilac	8

ENVELOPE STAMPS.

Same as Adhesive.

New Used

1/2 s. 1863,	green	
1 s. "	orange	
1 1/2 s. "	lilac	
2 s. "	crimson	
2 1/2 s. "	blue	
4 s. "	brown	

LUXEMBURG, E.

100 CENTIMES = 1 FRANC.



10 c. 1852,	black	0
1 s.g. "	red	5



1 c. 1863,	buff	3
2 c. "	black	5
4 c. "	yellow	5
4 c. 1871	green	5



10 c. 1859,	blue	5
12 1/2 c. "	rose	12
25 c. "	brown	5
30 c. "	lilac	10
37 1/2 c. "	green	10
40 c. "	orange	8
10 c. 1865,	lilac	5
20 c. 1867,	brown	10
25 c. 1865,	blue	5
37 1/2 c. "	brown	15
1 f. 1873,	"	

MADEIRA, AF.

1000 REIS = 1 MILREIS.



5 r. 1868,	black	5
10 r. "	yellow	8
20 r. "	straw	12
25 r. "	rose	12
50 r. "	green	25
80 r. "	orange	35
100 r. "	lilac	40
120 r. "	blue	50
240 r. "	violet	1 00



		New Used	
5 r. 1871,	black	5	
10 r. "	yellow	8	
20 r. "	straw	12	10
25 r. "	rose	18	10
50 r. "	green		
80 r. "	orange		10
100 r. "	lilac		
120 r. "	blue		10
240 r. "	violet		

MALTA, E.

12 PENCE = 1 SHILLING.



1/2 p. 1860,	buff	5
--------------	------	---

MAURITIUS, AF.

12 PENCE = 1 SHILLING.



1 p. 1850,	red	1 00
1 p. "	va. "	
1 p. "	" "	
2 p. "	blue	1 00
2 p. "	va. "	1 00
2 p. "	" "	



1 p. 1856,	red	
1 p. "	va. "	
2 p. "	blue	
2 p. "	va. "	

Britannia.

1856,	blue	50
"	red on blue paper	50
"	green	
"	red	50
"	magenta	
" (4 p.)	green	
" (8 p.)	magenta	

Britannia Seated.

6 p. 1856,	blue	20
1 s. 1862,	vermillion	30
6 p. "	purple	1 00
1 s. 1863,	green	50



New Used		
1 p. 1861,	brown	
2 p. "	blue	5
4 p. "	rose	5
6 p. 1862,	green	5
9 p. 1861,	lilac	10
1 s. 1862,	yellow	10
3 p. 1863,	vermillion	10
6 p. "	lilac	
1 s. "	green	
5 s. "	violet	25
1 s. 1870,	blue	5
9 p. 1872,	green	
10 p. "	(t329) maroon	

ENVELOPE STAMPS.
Profile of Queen in Different Frames.

6 p. 1863, (t330) violet	35
9 p. " (t331) "	50
1 s. " (t332) yellow	
10 p. 1872, (t333) lake	75
1 s. 8 p. " (t334) blue	1 25

MECKLENBURG SCHWERIN, E.

48 SCHILLINGS = 1 THALER.



1 s. 1856, (t335) red	20
3 s. " yellow	5
5 s. " blue	
5 s. 1864, brown	20
1 s. 1865, (t540) red	5
2 s. 1866, violet	15

ENVELOPE STAMPS.

Name, Arms.

1 s. 1856	red	10	5
1 1/2 s. "	green	10	10
3 s. "	yellow	15	5
5 s. "	blue		25
5 s. 1864,	brown	10	
2 s. 1866,	violet	15	10

MECKLENBURG STRELITZ, E.

30 SILBER GROSCHEN = 48 SCHILLINGS = 1 THALER.



1 1/2 s.g. 1864, roet. red	5
1 1/2 s.g. " " green	5
1 s. " " lilac	10
1 s.g. " oct. red	10
2 s.g. " " blue	8
3 s.g. " " brown	6

ENVELOPE STAMPS.

Same as Adhesive.

1 s.g. 1864,	rose	
2 s.g. "	blue	
3 s.g. "	brown	

MEXICO, N. A.

8 REALES = 100 CENTAVOS = 1

DOLLAR.



New Used		
1/2 r. 1856,	blue	50
1 r. "	yellow	25
2 r. "	green	20
4 r. "	red	50
8 r. "	violet	

Same, on Colored Paper.

1/2 r. 1860,	buff	
1 r. "	green	15
2 r. "	pink	10
4 r. "	yellow	
8 r. "	brown	75
4 r. 1863,	red	
8 r. "	on yellow	
8 r. "	on green	
8 r. "	on brown	75



1 r. 1867,	scarlet	
2 r. "	blue	
4 r. "	brown	
1 p. "	black	

Same as First Issue, Tinted Paper.

1/2 r. 1867,	black	
1 r. "	blue	
2 r. "	green	25
4 r. "	pink	50
4 r. "	red	
4 r. "	on yellow	15



1/2 r. 1864,	lilac	25	15
1 r. "	blue	25	10
2 r. "	orange	25	10
4 r. "	green	25	15
8 r. "	red	1 00	
3 c. 1865,	brown		



1 s.g. 1864,	rose	
2 s.g. "	blue	
3 s.g. "	brown	

Lithographed.

New Used

7 c. 1866,	grey	50
13 c. "	blue	50
25 c. "	brown	25
50 c. "	green	50

Engraved.

7 c. 1866,	lilac	50
13 c. "	blue	25
25 c. "	buff	50
50 c. "	green	50



1/2 r. 1867,	white	
1 r. "	blue	
2 r. "	green	
4 r. "	blue	
1 p. "	lilac	
1 r. "	green	
2 r. 1868	violet	2 00
2 r. "	rose	2 00



6 c. 1868,	buff	15	10
12 c. "	green	20	5
25 c. "	pink	20	5
50 c. "	yellow	40	10
100 c. "	brown	100	10
100 c. "	brown on b'n	125	



6 c. 1872, (seis),			
	green	25	10
12 c. " (doce) blue		50	5
25 c. " (veinticinco)	red	50	5
50 c. " (cincuenta)	yellow	1 00	5
100 c. " (cien) lilac		1 25	10

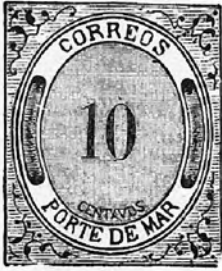


5 c. 1874,	brown	15	10
10 c. "	black	25	5
25 c. "	blue	50	5
50 c. "	green	1 00	10
100 c. "	saffrine	2 00	15

New Used

New Used

New Used



2 c.	1875,	black	
5 c.	"	"	
10 c.	"	"	
12 c.	"	"	
25 c.	"	"	
50 c.	"	"	
60 c.	"	"	
75 c.	"	"	
85 c.	"	"	
100 c.	"	"	

ENVELOPE STAMPS.



				New Used
5 c.	1874,	brown		
10 c.	"	green	40	10
25 c.	"	blue	60	10

NATAL, AF.

12 PENCE = 1 SHILLING.



Embossed on Colored Paper.

New Used

- 1 p. 1857, (t 336) blue
- 1 p. " pink
- 1 p. " yellow
- 3 p. " (t 337) rose
- 6 p. " green
- 9 p. " blue
- 1 s. " buff



- 1 p. 1860, carmine 8 5
 - 3 p. " blue 6 6
 - 6 p. " lilac 6 6
 - 1 s. 1861, (t 338) green 15 15
- Same Surcharged "Postage" in General Styles.
- 1 p. 1871, carmine 5 5
 - 3 p. " blue 6 6
 - 6 p. " lilac 6 6
 - 1 s. " green 10 10
 - 1 s. 1873, claret



- 1 p. 1874, carmine 6 5
- 3 p. " ultramarine 6 6
- 6 p. " violet 10 10
- 1 s. " (t 339) claret

NEVIS, W. I. I.

12 PENCE = 1 SHILLING.



- 1 p. 1861, lake 35 35
- 4 p. " " 35 35
- 6 p. " lavender 30 30
- 1 s. " green 6 6
- 1 p. 1867, vermilion 6 6
- 4 p. " orange 15 15
- 1 s. " light green 25 25

NEW BRUNSWICK, N. A.

12 PENCE = 1 SHILLING.
100 CENTS = 1 DOLLAR.

Name. Crown in Centre.

New Used

- 3 p. 1857, red 1 00 20
- 6 p. " yellow 2 50 1 50
- 1 s. " violet

Various Designs.

- 1 c. 1860, (t 340) brown 5
- 2 c. 1863, (t 341) orange 10
- 5 c. 1860, (t 342) green 5
- 10 c. " vermilion 5
- 12 1/2 c. " (t 343) blue 10
- 17 c. " (t 344) black



NEW CALEDONIA, O.

100 CENTIMES = 1 FRANC.

- 10 c. 1860, grey 50
- Set of Photographs, 50 varieties 50

NEW FOUNDLAND, N. A.

12 PENCE = 1 SHILLING,
100 CENTS = 1 DOLLAR.



- 1 p. 1857, (t 345) brown 6
- 3 p. " (t 346) green 25
- 5 p. " (t 345) brown 30
- 2 p. " vermilion
- 4 p. " "
- 6 p. " "
- 8 1/2 p. " "
- 8 p. " "
- 1 s. " "
- 2 p. 1860, lake 15 15
- 4 p. " " 25 15
- 6 p. " " 10 20
- 6 1/2 p. " " 50
- 8 p. " " 50
- 1 s. " " 60 50

Different Designs.

- 2 c. 1866, (t 333) green 5 5
- 5 c. " (t 346) brown
- 10 c. " (t 347) black 20 5
- 12 c. " (t 348) pink 25 10
- 13 c. " (t 349) orange 30 8
- 24 c. " (t 350) blue 50 25
- 1 c. " (t 351) lilac 5 5
- 5 c. " (t 346) black 12
- 3 c. 1870, (t 352) red 10
- 6 c. " (t 352) carmine 15 10
- 1 c. 1871, (t 351) violet 5 5
- 3 c. 1873, (t 352) blue 8 8



MODENA, E.

100 CENTESIMI = 1 LIRA.



- 5 c. 1852, green 10 10
- 10 c. " rose 10 10
- 10 c. " violet 10 10
- 15 c. " yellow 10 10
- 25 c. " buff 10 10
- 40 c. " blue 10
- 1 l. " white 20

NEWSPAPER STAMPS.

- 9 c. 1851, violet 15
- 9 c. 1853, va. " 2 00 1 00
- 10 c. 1859, white 25

PROVISIONAL GOVERNMENT.



- 5 c. 1859, green 12
- 15 c. " brown 12
- 20 c. " blue 12
- 40 c. " rose 12
- 80 c. " orange 12

MOLDAVIA, E.

See Roumania.

MONTENEGRO, E.

100 SOLDI = 1 FLORIN.



- 2 s. 1874, yellow 6
- 3 s. " green 8
- 5 s. " rose 13
- 7 s. " violet 17
- 10 s. " blue 20
- 15 s. " bistre 30
- 2 s. " violet brown 40

New Used

New Used

New Used



2 c.	1875,	black	
5 c.	"	"	
10 c.	"	"	
12 c.	"	"	
25 c.	"	"	
50 c.	"	"	
60 c.	"	"	
75 c.	"	"	
85 c.	"	"	
100 c.	"	"	

ENVELOPE STAMPS.



5 c.	1874,	brown		
10 c.	"	green	40	10
25 c.	"	blue	60	10

NATAL, AF.

12 PENCE = 1 SHILLING.



Embossed on Colored Paper.

New Used

1 p. 1857, (t 336) blue	
1 p. " " pink	
1 p. " " yellow	
3 p. " (t 337) rose	
6 p. " " green	
9 p. " " blue	
1 s. " " buff	



1 p. 1860, carmine	8	5
3 p. " " blue		6
6 p. " " lilac		6
1 s. 1861, (t 338) green		15

Same Surcharged "Postage" in Several Styles.

1 p. 1871, carmine		5
3 p. " " blue		6
6 p. " " lilac		6
1 s. " " green		10
1 s. 1873, claret		



1 p. 1874, carmine	6	5
3 p. " " ultramarine		6
6 p. " " violet		10
5 s. " (t 339) claret		

NEVIS, W. I. I.

12 PENCE = 1 SHILLING.



1 p. 1861, lake		
4 p. " " "		35
6 p. " " lavender		30
1 s. " " green		
1 p. 1867, vermilion	6	6
4 p. " " orange		15
1 s. " " light green		25

NEW BRUNSWICK, N. A.

12 PENCE = 1 SHILLING.

100 CENTS = 1 DOLLAR.

Name. Crown in Centre.

New Used

3 p. 1857, red	1 00	20
6 p. " " yellow	2 50	1 50
1 s. " " violet		

Various Designs.

1 c. 1860, (t 340) brown		5
2 c. 1863, (t 341) orange		10
5 c. 1860, (t 342) green		5
10 c. " " vermilion		5
12½ c. " (t 343) blue		10
17 c. " (t 344) black		



NEW CALEDONIA, O.

100 CENTIMES = 1 FRANC.

10 c. 1860, grey	50
Set of Photographs, 50 varieties	50

NEW FOUNDLAND, N. A.

12 PENCE = 1 SHILLING.

100 CENTS = 1 DOLLAR.



1 p. 1857, (t 345) brown		6
3 p. " (t 346) green		25
5 p. " (t 345) brown		30
2 p. " " vermilion		
4 p. " " "		
6 p. " " "		
6½ p. " " "		
8 p. " " "		
1 s. " " "		
2 p. 1860, lake	15	
4 p. " " "	25	15
6 p. " " "	10	20
6½ p. " " "	50	
8 p. " " "	50	
1 s. " " "	60	50

Different Designs.

2 c. 1866, (t 373) green	5	5
5 c. " (t 346) brown		
10 c. " (t 347) black	20	5
12 c. " (t 348) pink	25	10
13 c. " (t 349) orange	30	8
24 c. " (t 350) blue	50	25
1 c. " (t 351) lilac	5	5
5 c. " (t 346) black	12	
3 c. 1870, (t 352) red		10
6 c. " (t 352) carmine	15	10
1 c. 1871, (t 351) violet	5	5
3 c. 1873, (t 352) blue	8	8



MODENA, E.

100 CENTESIMI = 1 LIRA.



5 c. 1852, green	10	10
10 c. " " rose	10	10
10 c. " " violet	10	
15 c. " " yellow	10	10
25 c. " " buff	10	10
40 c. " " blue	10	
1 l. " " white	20	

NEWSPAPER STAMPS.

9 c. 1854, violet	15
9 c. 1853, va. " 2 00	1 00
10 c. 1859, white	25

PROVISIONAL GOVERNMENT.



5 c. 1859, green	12
15 c. " " brown	12
20 c. " " blue	12
40 c. " " rose	12
80 c. " " orange	12

MOLDAVIA, E.

See Roumania.

MONTENEGRO, E.

100 SOLDI = 1 FLOREN.



2 s. 1874, yellow	6
3 s. " " green	8
5 s. " " rose	13
7 s. " " violet	17
10 s. " " blue	20
15 s. " " bistro	30
2½ s. " " violet brown	40

New Used

New Used

New Used



2 c.	1875,	black	
5 c.	"	"	
10 c.	"	"	
12 c.	"	"	
25 c.	"	"	
50 c.	"	"	
60 c.	"	"	
75 c.	"	"	
85 c.	"	"	
100 c.	"	"	

ENVELOPE STAMPS.



5 c.	1874,	brown		
10 c.	"	green	40	10
25 c.	"	blue	60	10

NATAL, AF.

12 PENCE = 1 SHILLING.



Embossed on Colored Paper.

New Used

- 1 p. 1857, (t 336) blue
- 1 p. " pink
- 1 p. " yellow
- 3 p. " (t 337) rose
- 6 p. " green
- 9 p. " blue
- 1 s. " buff



- 1 p. 1860, carmine 8 5
 - 3 p. " blue 6 6
 - 6 p. " lilac 6 6
 - 1 s. 1861, (t 338) green 15
- Same Surcharged "Postage" in Several Styles.
- 1 p. 1871, carmine 5 5
 - 3 p. " blue 6 6
 - 6 p. " lilac 6 6
 - 1 s. " green 10 10
 - 1 s. 1873, claret



- 1 p. 1874, carmine 6 5
- 3 p. " ultramarine 6 6
- 6 p. " violet 10 10
- 5 s. " (t 339) claret

NEVIS, W. I. I.

12 PENCE = 1 SHILLING.



- 1 p. 1861, lake 35
- 4 p. " " 35
- 6 p. " lavender 30
- 1 s. " green 30
- 1 p. 1867, vermilion 6 6
- 4 p. " orange 15
- 1 s. " light green 25

NEW BRUNSWICK, N. A.

12 PENCE = 1 SHILLING.
100 CENTS = 1 DOLLAR.

Name. Crown in Centre.

New Used

- 3 p. 1857, red 1 00 20
- 6 p. " yellow 2 50 1 50
- 1 s. " violet

Various Designs.

- 1 c. 1860, (t 340) brown 5
- 2 c. 1863, (t 341) orange 10
- 5 c. 1860, (t 342) green 5
- 10 c. " vermilion 5
- 12 1/2 c. " (t 343) blue 10
- 17 c. " (t 344) black



NEW CALEDONIA, O.

100 CENTIMES = 1 FRANC.

- 10 c. 1860, grey 50
- Set of Photographs, 50 varieties 50

NEW FOUNDLAND, N. A.

12 PENCE = 1 SHILLING.
100 CENTS = 1 DOLLAR.



- 1 p. 1857, (t 345) brown 6
- 3 p. " (t 346) green 25
- 5 p. " (t 345) brown 30
- 2 p. " vermilion
- 4 p. " "
- 6 p. " "
- 8 1/2 p. " "
- 8 p. " "
- 1 s. " "
- 2 p. 1860, lake 15
- 4 p. " " 25 15
- 6 p. " " 40 20
- 6 1/2 p. " " 50
- 8 p. " " 50
- 1 s. " " 60 50

Different Designs.

- 2 c. 1866, (t 353) green 5 5
- 5 c. " (t 346) brown
- 10 c. " (t 347) black 20 5
- 12 c. " (t 348) pink 25 10
- 13 c. " (t 349) orange 30 8
- 24 c. " (t 350) blue 50 25
- 1 c. " (t 351) lilac 5 5
- 5 c. " (t 346) black 12
- 3 c. 1870, (t 352) red 10
- 6 c. " (t 352) carmine 15 10
- 1 c. 1871, (t 351) violet 5 5
- 3 c. 1873, (t 352) blue 8 8



MODENA, E.

100 CENTESIMI = 1 LIRA.



- 5 c. 1852, green 10 10
- 10 c. " rose 10 10
- 10 c. " violet 10 10
- 15 c. " yellow 10 10
- 25 c. " buff 10 10
- 40 c. " blue 10 10
- 1 L. " white 20

NEWSPAPER STAMPS.

- 9 c. 1851, violet 15
- 9 c. 1853, va. " 2 00 1 00
- 10 c. 1859, white 25

PROVISIONAL GOVERNMENT.



- 5 c. 1859, green 12
- 15 c. " brown 12
- 20 c. " blue 12
- 40 c. " rose 12
- 80 c. " orange 12

MOLDAVIA, E.

See Roumania.

MONTENEGRO, E.

100 SOLDI = 1 FLORIN.



- 2 s. 1874, yellow 6
- 3 s. " green 5
- 7 s. " rose 13
- 7 s. " violet 17
- 10 s. " blue 20
- 15 s. " bistre 30
- 26 s. " violet brown 40

NEW GRANADA, S. A.

See United States of Colombia.

NEW SOUTH WALES, O.

12 PENCE = 1 SHILLING.



New Used

1 p. 1850,	red	1 00
1 p. "	va. "	
1 p. "	" "	
2 p. "	blue	75
2 p. "	va. "	75
2 p. "	" "	
3 p. "	green	1 00
3 p. "	va. "	
3 p. "	" "	



Blue Paper.

1 p. 1851,	carmine	40
2 p. "	blue,	10
3 p. "	green,	25
6 p. 1852,	b'wn,	50
8 p. 1853,	orange	1 50

White Paper.

1 p. 1854,	orange	25
2 p. "	blue	10
3 p. "	green	15



1 p. 1856,	red	5
2 p. "	blue	5
3 p. "	green	10

Large Rectangle.

5 p. 1854,	green	15
6 p. "	brown	15
6 p. "	sea green	20
6 p. 1861,	violet	5
8 p. 1854,	orange	20
1 s. "	rose	5
5 s. 1860,	(t 354) violet	20

Profile Victoria; Different Frames.

1 p. 1864,	(t 355) red	6	2
2 p. 1868,	(t 356) blue		2
4 p. 1867,	(t 357) red		10
10 p. "	(t 358) lilac		10
9 p. 1871,	" red		10
6 p. 1872,	(t 359) violet		3

REGISTERED LETTER STAMPS.

1853,	red and blue	10
"	orange " "	1 00

SIDNEY ENVELOPE STAMPS.

Arms Embossed in Relief, Circular.

New Used

(2 p.) 1849,	white pa.	5 00
(2 p.) "	blue pa.	

NEWSPAPER BAND STAMPS.

1 p. 1864,	(t 360) red	10
1 p. 1865,	(t 355) "	5

NEW ZEALAND, O.

12 PENCE = 1 SHILLING.



Blue Paper.

1 p. 1855,	red	
2 p. "	blue	
1 s. "	green	

White Paper.

1 p. 1859,	red	3
2 p. "	blue	5
3 p. 1868,	violet	5
4 p. 1865,	red	50
4 p. 1866,	yellow	10
6 p. 1859,	brown	3
1 s. "	green	3
1 p. 1872,	brown	5
2 p. "	vermillion	5
6 p. "	blue	5



1/2 p. 1873,	(t 361) red	3
1 p. "	(t 362) violet	2
2 p. "	(t 363) pink	3
3 p. "	(t 364) brown	10
4 p. "	(t 365) maroon	10
6 p. "	(t 366) blue	5
1 s. "	(t 367) green	5

NICARAGUA, S. A.

100 CENTAVOS = 1 PESO.



2 c. 1862,	blue	15
5 c. "	black	15
1 c. 1869,	brown	5
10 c. "	red	30
25 c. "	green	50

NORTH GERMAN CONFEDERATION, E.

See Germany.

NORWAY, E.

120 SKILLINGS = 1 SPECIE DALER.

New Used

4 s. 1854,	(t 368) blue	5
------------	--------------	---



2 s. 1856,	yellow	
3 s. "	lilac	5
4 s. "	blue	5
8 s. "	red	5



2 s. 1865,	yellow	
3 s. 1866,	lilac	
4 s. 1864,	blue	3
8 s. 1863,	pink	5
24 s. "	brown	5



1 s. 1868,	black	3
2 s. 1869,	orange	3
3 s. 1862,	violet	3
4 s. 1867,	blue	2
8 s. "	rose	3



2 s. 1872,	blue	10
3 s. "	carmine	5
4 s. "	violet	5
1 s. 1873,	green	5
7 s. "	brown	5
6 s. 1875,	brown	5
1 o. 1876,	grey	
3 o. "	orange	
5 o. "	blue	
10 o. "	carmine	
12 o. "	green	
20 o. "	red	
25 o. "	lilac	
50 o. "	rose	

ENVELOPE STAMPS.

Same as Adhesives.

2 s. 1873,	blue	10
3 s. "	carmine	10

New Used

New Used

New Used

NOVA SCOTIA, N. A.

12 PENCE = 1 SHILLING,
100 CENTS = 1 DOLLAR.



- | | | |
|------|------------------|----|
| 1 p. | 1857, head, b'wn | 25 |
| 3 p. | " flowers, blue | |
| 6 p. | " " green | 35 |
| 1 s. | " " violet | |



- | | | |
|------------------|-----------------|----|
| 1 | c. 1860, black | 5 |
| 2 | c. 1863, violet | |
| 5 | c. 1860, blue | 5 |
| 8 $\frac{1}{2}$ | c. " green | 25 |
| 10 | c. " vermilion | 5 |
| 12 $\frac{1}{2}$ | c. " black | 10 |



OLDENBURG, E.

30 SILBER GROSCHEN = 1 THALER.



- | | | |
|---------------------|-------------|----|
| $\frac{1}{3}$ s. g. | 1855, green | 50 |
| 1-30 t. | 1852, blue | 5 |
| 1-15 t. | " pink | 15 |
| 1-10 t. | " yellow | 10 |



Colored Paper.

- | | | |
|---------------------|-------------|----|
| $\frac{1}{3}$ s. g. | 1860, green | |
| 1 | " " blue | 5 |
| 2 | " " pink | 25 |
| 3 | " " yellow | 25 |

White Paper.

- | | | |
|---------------------|--------------|----|
| $\frac{1}{4}$ s. g. | 1861, orange | |
| $\frac{1}{3}$ s. g. | " green | |
| $\frac{1}{2}$ s. g. | " brown | 15 |
| 1 | " blue | 15 |
| 2 | " red | 25 |
| 3 | " yellow | 25 |



- | | | | |
|---------------------|-------------|---|---|
| $\frac{1}{3}$ s. g. | 1862, green | 6 | 5 |
| $\frac{1}{2}$ s. g. | " orange | 5 | 5 |
| 1 | " rose | 5 | 5 |
| 2 | " blue | 5 | 5 |
| 3 | " brown | 5 | 5 |

ENVELOPE STAMPS.

Arms in Oval.

- | | | | |
|---------------------|-----------------|----|----|
| $\frac{1}{3}$ s. g. | 1860, brown | 30 | |
| 1 | " blue | 30 | |
| 2 | " rose | 40 | |
| 3 | " yellow | 50 | |
| $\frac{1}{3}$ s. g. | 1862, vermilion | | |
| 1 | " rose | 10 | 5 |
| 2 | " blue | 15 | 10 |
| 3 | " brown | 30 | 10 |



ORANGE STATES, AF.
12 PENCE - 1 SHILLING.



1 p. 1868	brown	6	
6 p. "	pink	30	
1 s. "	orange	65	25

PARMA, E.

100 CENTESIMI - 1 LIRA.



5 c. 1852,	yellow	75
15 c. "	red	15
25 c. "	brown	15

Same, Colored Paper.

5 c. 1857,	yellow	
10 c. "	white	5
15 c. "	pink	15
25 c. "	violet	25
10 c. "	blue	



15 c. 1858,	pink	15
25 c. "	brown	15
40 c. "	blue	15

NEWSPAPER STAMPS.



6 c. 1857,	rose	10
9 c. 1854,	blue	10

PROVISIONAL GOVERNMENT.
Stati Parm. Octagon.

5 c. 1859,	green	10
10 c. "	brown	10
20 c. "	blue	10
40 c. "	red	15
80 c. "	orange	



PERU, S. A.

100 CENTAVOS = 10 DINEROS
= 5 PESETAS = 1 PESO.



1 d. 1858,	blue	25
1 p. "	red	50
3 p. "	orange	
1 d. "	(t 372) blue	75
1 p. "	" red	75
1 d. 1860,	(t 373) blue	25
1 p. "	" red	50

Embossed Arms.

New Used

1 d. 1862,	red	10
1 p. 1863,	brown	15
1 d. 1868,	green	3
1 p. 1871,	orange	10



Similar to Out.

5 c. 1870,	green	10
10 c. 1867,	red	25
20 c. "	brown	10

Various Designs.

5 c. 1867,	(t 374) red	10
2 c. 1873,	(t 375) blue	10
2 c. 1874,	(t 376) purple	10
50 c. "	(t 377) green	
1 s. "	(t 378) red	

UNPAID LETTER STAMPS.



5 c. 1874,	vermillion	15
10 c. "	orange	15
20 c. "	blue	25
50 c. "	brown	75

ENVELOPE STAMPS.



2 c. 1874,	blue
5 c. "	green
10 c. "	red
20 c. "	purple
50 c. "	rose

PACIFIC STEAM NAVIGATION CO.

Steamship or Oval.

1 r. 1857,	blue
2 r. "	"
2 r. "	brown
1 r. "	claret
2 r. "	"
1 r. 1868,	yellow
2 r. "	"
1 r. "	green
2 r. "	"

PARAGUAY, S. A.

8 REALES - 1 PESO.



1 r. 1870,	(t 369) rose
2 r. "	(t 370) blue
3 r. "	(t 371) black

New Used

PERSIA.



1 s. 18 f. black
 2 s. " blue
 4 s. " red
 8 s. " green

**PHILIPPINE ISLANDS,
 O.**

8 CUARTOS = 1 REAL, 100 CÉN-
 TIMOS = PESETA OR ESCUDO.

New Used



5 c. 1854, red
 5 c. " orange
 10 c. " carmine
 1 r. " blue
 2 r. " green



5 c. 1859 vermilion
 5 c. " red 1 00
 10 c. " rose 1 00
 5 c. 1863, ver'n
 5 c. " carmine
 1 r. " violet
 2 r. " blue
 1 r. p. f. " grey
 1 r. p. f. " green



3 1/2 c. black on buff 25
 6 1/4 c. green on rose 35
 12 1/2 c. blue on flesh 70 25
 25 c. rose on pink 50



5 c. 1870, blue
 10 c. " green 1 00
 20 c. " brown
 40 c. " rdse



25 c. 1872, lilac

New Used

12 c. 1872, rose
 16 c. " ultramarine
 62 c. " lilac
 125 c. " bistre



12 c. 1874, grey 25
 62 c. " carmine 100
 125 c. " stone



12 c. 1876, mauve
 25 c. " green
 2 c. p. 1876, rose

POLAND, E.

100 KOPECS = 1 RUBLE.

New Used
10 k. 1860, (t 379) lilac & rose

ENVELOPE STAMPS.

Arms, Circular.

red
smaller, red
3 k. 1860, blue
10 k. " black

PORTUGAL, E.

1000 REIS = 1 MILREIS.



Each Value Different up to 1866
Issue, but Similar to Cut
Above Series.

5 r. 1853, brown 40
25 r. " blue 30 10
50 r. " green 60
100 r. " lilac 1 00



5 r. 1855, brown 15
25 r. " blue 15
50 r. " green 15
100 r. " lilac 15
5 r. " va. brown 15 10
25 r. " " blue 25 10
25 r. " " rose 10 10



5 r. 1862, brown 8 5
10 r. " yellow 10 5
25 r. " rose 20 3
50 r. " green 25 15
100 r. " lilac 40 10



5 r. 1866 black 5 3
10 r. " yellow 8 5
20 r. " straw 15 5
25 r. " rose 20 3
50 r. " green 25 10

New Used

80 r. " orange 30 8
100 r. " lilac 50 5
120 r. " blue 60 5
240 r. 1870, mauve 15



5 r. 1871, black 5 3
10 r. " yellow 8 5
20 r. " straw 20 5
25 r. " rose 20 3
50 r. " green 25 8
80 r. " orange 30 3
100 r. " lilac 50 5
120 r. " blue 60 3
240 r. 1873, mauve 15
15 r. 1875, brown
150 r. 1876, blue
300 r. " violet

PORTUGUESE INDIES, A

1000 REIS = 1 MILREIS.



10 r. 1872, black 10
20 r. " vermilion 20
40 r. " blue 40
100 r. " green
200 r. " yellow
300 r. " bright violet
600 r. " " "
900 r. " " "

PRINCE EDWARD ISLAND, N. A.

12 PENCE = 1 SHILLING,
100 CENTS = 1 DOLLAR.



Each Frame Different Design

1 p. 1860, (t 380) orange 5
2 p. " (t 381) rose 5
3 p. " (t 382) blue 6
4 p. 1869, (t 383) bl'k 10
4 1/2 p. 1870, (t 384) brown 10
6 p. 1860, (t 385) green 15
9 p. " (t 386) lilac 20
1 c. 1872, (t 387) orange 5
2 c. " (t 388) blue 5
3 c. " (t 389) rose 5
4 c. " (t 390) green 10
5 c. " (t 391) black 10
12 c. " (t 392) purple

PRUSSIA, E.

12 PFENNIGE = 1 GROSCHEN.



		New	Used
4 pf. 1856,	green	10	5
1/2 s.g. 1850,	orange	10	5
<i>Colored Paper.</i>			
1 s.g. 1850,	pink	20	2
2 s.g. "	blue	20	3
3 s.g. "	yellow	20	2
<i>White Paper, Plain Ground.</i>			
1 s.g. 1857,	rose	5	5
2 s.g. "	blue	10	10
3 s.g. "	yellow	5	5
<i>Checked Ground.</i>			
4 pf. 1858,	green	5	5
1 s.g. "	rose	2	2
2 s.g. "	blue	2	2
3 s.g. "	yellow	2	2
<i>Embossed Arms.</i>			
3 pf. 1865,	violet	3	3
4 pf. 1861,	green	5	1
6 pf. "	orange	5	1
1 s.g. "	rose	7	1
2 s.g. "	blue	7	1
3 s.g. "	brown	10	1
10 s.g. 1866,	rose	10	5
30 s.g. "	blue	10	10



1 k. 1867,	green	5	5
2 k. "	orange	5	3
3 k. "	rose	5	3
6 k. "	blue	5	3
9 k. "	brown	10	3

ENVELOPE STAMPS.



Silk Thread; in Paper.

1 s.g. 1851,	rose	10
2 s.g. "	blue	10
3 s.g. "	yellow	10



		New	Used
4 s.g. 1851,	brown	30	
5 s.g. "	violet	20	
6 s.g. "	green	20	
7 s.g. "	red	20	

Same Without Threads.

1 s.g. 1856,	rose	6
2 s.g. "	blue	6
3 s.g. "	orange	6

Same as Adhesives.

1 s.g. 1861,	rose	25	10
2 s.g. "	blue	25	10
3 s.g. "	brown	25	10

Same with Inscription Crossing Stamp.

3 pf. 1868,	violet	25	
6 pf. "	orange	25	
1 s.g. 1862,	rose	5	2
2 s.g. "	blue	10	2
3 s.g. "	brown	15	2
1 k. 1867,	green	10	
2 k. "	orange	10	
3 k. "	rose	15	3
6 k. "	blue	20	3
9 k. "	brown	25	3

QUEENSLAND, O.

12 PENCE = 1 SHILLING.



1 p. 1861,	carmine	15
2 p. "	blue	15
3 p. "	brown	5
6 p. "	dark green	10
1 s. "	violet	5
1 p. 1863,	orange	6
4 p. 1866,	violet	5
6 p. "	light green	5
1 s. "	brown	5
5 s. 1867,	rose	50
1 s. 1873,	claret	10
1 s. 1875,	purple	10

REGISTERED LETTER STAMPS.

Same, 1861, yellow 15

REUNION ISLAND, AF.

100 CENTIMES = 1 FRANC.

15 c. 1852, (t 393) bl'k
30 c. " (t 394) "

ROMAGNA, E.

100 BAJOCCHI = 1 SCUDO.



1/2 b. 1859,	yellow	10
1 b. "	drab	10
2 b. "	yellow	10
3 b. "	green	10
4 b. "	buff	10
5 b. "	violet	10
6 b. "	green	10
8 b. "	rose	10
20 b. "	blue	10

ROMAN STATES, E.

100 BAJOCCHI = 1 SCUDO.
100 CENTESIMI = 1 LIRA.



		New	Used
1/2 b. 1852, (t 395) grey		10	
1 b. " (t 396) green		3	
2 b. " (t 397) "		3	
3 b. " (t 398) buff		5	
4 b. " (t 399) yellow		5	
4 b. " " buff		15	
5 b. " (t 400) rose		3	
6 b. " (t 401) pale blue		3	
7 b. " (t 402) blue		5	
3 b. " (t 403) white		3	
50 b. " (t 404) blue		25	
1 s. " (t 405) rose		75	
1/2 b. 1866, (t 395) violet		5	5

Same on Glazed Paper.

2 c. 1867, (t 397) green	5	3
3 c. " (t 395) grey	10	
5 c. " (t 398) blue	5	3
10 c. " (t 403) scarlet	5	2
20 c. " (t 399) carmine	5	3
40 c. " (t 401) yellow	5	5
80 c. " (t 396) rose	5	5

ROUMANIA, E.

40 PARAS = 100 BANI = 1 PIASTRE.

Ox's Head, Circular.

54 p. 1854,	green
81 p. "	blue
108 p. "	pink



5 p. 1861,	black		
40 p. "	blue		
80 p. "	pink		
<i>Ox Head, Eagle and Horn.</i>			
3 p. 1862,	yellow	50	
6 p. "	red	25	
30 p. "	blue	50	15



2 p. 1865,	yellow	5
5 p. "	blue	10
20 p. "	carmine	20



Colored Paper.

2 p. 1866,	yellow	5	
5 p. "	blue	10	
20 p. "	rose	25	15



			New Used
2 b.	1868,	orange	5 5
4 b.	"	blue	5 5
18 b.	"	rose	5 5
3 b.	1870,	marve	10 5



5 b.	1869,	yellow	
10 b.	"	blue	15 5
15 b.	"	red	25 5
25 b.	"	blue & orange	5 5
50 b.	"	red & blue	7 5



5 b.	1871,	scarlet	10
10 b.	"	yellow	5
15 b.	"	red	15
25 b.	"	brown	10
50 b.	"	red & blue	
10 b.	1872,	"	5



1 1/2 b.	1873,	olive	2
3 b.	"	yellow gr'n	3
5 b.	"	bistre	5
10 b.	"	blue	10
15 b.	"	red brown	15
25 b.	"	orange	25
50 b.	"	rose	40

NEWSPAPER WRAPPERS.

1 1/2 b.	1870, (t 406)	green	8
1 1/2 b.	1871, (t 407)	yellow	5



RUSSIA, E.
100 KOPECS = 1 RUBLE.



			New Used
10 k.	1857, b'wn&blue		25 3
20 k.	1858, blue		
	& orange	40	5
30 k.	" carmine&gr'n	60	10
5 k.	1863, blue & bl'k		
1 k.	1864, yellow		
	& black	3	3
3 k.	" green & "	10	3
5 k.	" lilac & "	15	5
3 k.	1870, gr'n & "		25

Value in Roman Numerals.

2 k.	1875, blk. & pink	3
8 k.	" blue & grey	3
20 k.	1876, blue & or'g	10

ENVELOPE STAMPS.

5 k.	1848,	blue	
10 k.	"	black	10
20 k.	"	blue	
30 k.	"	red	



5 k.	1869, (t 408) violet		
5 k.	1870, (t 409) rose	20	
10 k.	1869,	brown	35
20 k.	"	blue	45
30 k.	"	rose	75

Similar to Last.

5 k.	1876	purple	
8 k.	"	slate	
20 k.	"	blue	

NOTE.—There is a large number of stamps issued by the local authorities in towns, but they are not collected in this country.



SALVADOR, S. A.

8 REALES = 1 PESO.

Mountain View.

1 1/2 r.	1867,	blue	15	25
1 r.	"	red	20	10
2 r.	"	green	40	10
4 r.	"	brown	1 00	35

Surcharged with Arms in Circle.

1 1/2 r.	1874,	blue	15
1 r.	"	red	5
2 r.	"	green	5
4 r.	"	brown	20

SANDWICH ISLES, O.
100 CENTS = 1 DOLLAR.



			New Used
2 c.	1852, (t 410)	blue	
5 c.	"	"	
13 c.	"	(t 411)	"
13 c.	"	(t 412)	"
<i>Head, Kamehameha III.</i>			
5 c.	1853, (t 413)	blue	25 25
13 c.	"	(t 414) red	



Blue Paper.

1 c.	1859,	blue	
2 c.	"	"	
5 c.	1865,	"	
5 c.	1867,	"	20
1 c.	"	black	
2 c.	"	"	

White Paper.

1 c.	1863,	black	
2 c.	"	"	
1 c.	1865,	blue	
2 c.	1862, (t 415)	rose	30 20



Different Portraits on Ench.

2 c.	1864, (t 416)	vermillion	10	5
5 c.	1866, (t 417)	blue	25	10
1 c.	1871, (t 418)	violet	5	
6 c.	"	(t 419) green,	20	10
18 c.	"	(t 420) pink	50	20
2 c.	1875, (t 421)	b'wn	6	
12 c.	"	(t 422) black	30	



SARAWAK, O.

100 CENTS = 1 FLOREN.

Tinted Paper.

3 c. 1869, (t 423) b/w'n New Used
20



3 c. 1871, brown 10
2 c. 1874, mauve 8
4 c. " brown 15
6 c. " green 20
8 c. " blue 30
12 c. " rose 40

SARDINIA, E.

See Italy.

SAXONY, E.

10 PFENNIG = 1 GROSCHEN.

3 p. 1850, (t 424) red



1/2 n.g. 1851, white 10
1 n.g. " pink 5
2 n.g. " blue 5
3 n.g. " yellow 5
3 p. 1854, (t 425) green 3



1/2 n.g. 1854, white 3
1 n.g. " pink 3
2 n.g. " blue 3
3 n.g. " yellow 3
5 n.g. 1856, vermilion 5
10 n.g. " blue 10



3 p. 1863, (t 426) green 2
2 n.g. " orange 1
1 n.g. " pink 1
2 n.g. " blue 1
3 n.g. " brown 1
5 n.g. " violet 1

ENVELOPE STAMPS.



1 n.g. 1856, rose 10
2 n.g. " blue 10
3 n.g. " yellow 15
5 n.g. " lilac 15
10 n.g. " green 25



2 1/2 n.g. 1865, (t 427) orange 5
1 n.g. 1863, rose 5
2 n.g. " blue 10
3 n.g. " brown 15
5 n.g. " violet 25

SCHLESWIG HOLSTEIN, E.

16 SCHILLINGS = 1 MARK.



1 s. 1850, blue 20
2 s. " pink 50



1/2 s. 1865, rose 5
1 1/4 s. " green 8
1 1/2 s. " lilac 7
2 s. " blue 10
4 s. " brown 15

Schleswig.



1 1/4 s. 1864, green 5
4 s. " rose 10

1/2 s. 1865, green New Used
4 3
1 1/4 s. " violet 6 3
1 1/2 s. " rose 6 5
2 s. " blue 8 5
4 s. " brown 15 10

Holstein.

Figure. Small Rect.

1 1/4 s. 1864, (t 428) blue 5
1 1/4 s. " (t 429) " 10
1 1/4 s. " (t 430) " 10



1/2 s. 1865, green 5
1 1/4 s. " mauve 5
2 s. " blue 5

Colored Letters.

1 1/2 s. 1865, rose 7
4 s. " brown 10
1 1/4 s. 1866, mauve 7
2 s. 1867, blue 3

SERVIA, E.

40 PARAS = 1 PIASTOK.

Arms.

1 p. 1866, green on rose 8
2 p. " brown on lilac 8



1 p. 1866, green 5
2 p. " brown 10
10 p. " orange 10
20 p. " rose 20
40 p. " blue 25



1 p. 1869, yellow 3
10 p. " brown 7
15 p. " orange 10
20 p. " blue 15
25 p. " rose 15
35 p. " light green 15
40 p. " mauve 20
50 p. " dark green 30
2 p. 1873, black 5

SHANGHAI, A.

New Used

100 CANDAREENS = 1 TAEI,
100 CENTS = 1 DOLLAR.



1 ca. 1865,	blue	10
2 ca. "	black	10
3 ca. "	brown	20
4 ca. "	yellow	30
6 ca. "	red brown	40
8 ca. "	green	60
12 ca. "	brown	85
16 ca. "	red	1 00



2 ce. 1866,	rose	10
4 ce. "	lilac	25
8 ce. "	blue	50
16 ce. "	green	1 00
1 ca. 1866,	brown	10
3 ca. "	orange	
6 ca. "	grey	1 00
12 ca. "	brown	1 20
1 ca. 1874,	lilac	10
1 ca. 1875,	orange	10
3 ca. "	rose	25
6 ca. 1876,	green	
9 ca. "	blue	
12 ca. "	brown	

SICILY, E.

See Two Sicilies.



SIERRA LEONE, AF.

12 PENCE = 1 SHILLING.

G p. 1861, (t 431) lilac 35 15



1 p. 1872,	carmine	6	5
2 p. 1873,	violet	15	
3 p. 1872,	yellow	20	15
4 p. "	blue	25	10
1 s. "	green	60	25
½ p. 1876,	brown		

SOUTH AFRICAN RE-PUBLIC, AF.

12 PENCE = 1 SHILLING.



1 p. 1869,	red	10	New Used
3 p. "	purple	30	
6 p. "	blue	50	
1 s. "	green	75	
1 p. 1871,	black	6	

SOUTH AUSTRALIA, O.

12 PENCE = 1 SHILLING.



1 p. 1855,	green	10
2 p. "	carmine	10
6 p. "	blue	5
1 s. 1857,	yellow	20
1 p. 1860,	green	5
2 p. "	orange	5
6 p. "	violet	10
1 s. 1863,	brown	10



9 p. 1860,	lilac	15
10 p. 1866,	orange	25
10 p. 1867,	yellow	25
9 p. 1873,	purple	15



Similar to Out.

2 p. 1869,	orange	15	2
3 p. 1870,	blue		
3 p. 1871,	"		15
4 p. 1867,	violet		15
2 s. "	red		10

SPAIN, E.

3 CUARTOS = 1 REAL, 100 CENTIMOS
= 1 PESETA OR ESCUDO.



New Used

6 c. 1850, (t 432) bl'k	5
12 c. "	75
5 r. "	50
6 r. "	2 00
10 r. "	1 50



6 c. 1851, (sets) bl'k	5
12 c. "	75
2 r. "	75
5 r. "	3 00
6 r. "	1 00



6 c. 1852,	rose	4
12 c. "	violet	75
5 r. "	red	
6 r. "	green	50
	blue	2 50



6 c. 1853,	red	4
12 c. "	violet	1 00
2 r. "	vermillion	
5 r. "	green	50
6 r. "	blue	



2 c. 1854, (t 431) green		
4 c. "	rose	10
6 c. "	red	5
1 r. "	(t 433) blue	
2 r. "	scarlet	
5 r. "	green	
6 r. "	blue	



Blue Paper. Watermark of Loops.

		New Used
2 c. 1855,	green	40
4 c. "	carmin	10
1 r. "	blue	25
2 r. "	brown	15

Rough Impression on White Paper.

2 c. 1856,	green	75
4 c. "	rose	15
1 r. "	blue	50
2 r. "	violet	15

Same on Plain White Paper.

2 c. 1857,	green	20
4 c. "	rose	5
12 c. "	orange	25
1 r. "	blue	20
2 r. "	violet	15



2 c. 1860,	green	15
4 c. "	orange	5
12 c. "	red	10
19 c. 1861,	brown	10
1 r. "	blue	10
2 r. "	lilac	5



2 c. 1862,	blue	10
4 c. "	brown	10
12 c. "	blue	25
19 c. "	rose	10
1 r. "	chocolate	25
2 r. "	green	30



2 c. 1864,	blue	10
4 c. "	red	10
12 c. "	green	30
19 c. "	violet	10
1 r. "	brown	25
2 r. "	blue	30



		New Used
2 c. 1865,	rose	8
4 c. "	blue	10
12 c. "	blue & pink	25
19 c. "	brown "	10
1 r. "	green	20
2 r. "	rose	20



2 c. 1866,	pink	10
4 c. "	blue	5
12 c. "	orange	25
19 c. "	brown	50
10 c. de e. 1866,	green	20
20 c. de e. "	lilac	30
20 c.	" (t 432) "	25



2 c. 1867,	brown	5
4 c. "	blue	8
12 c. "	orange	20
19 c. "	rose	10
10 c. de e. 1867,	green	20
20 c. de e. "	lilac	30
19 c. 1868,	brown	3
25 m. de e. 1867,	blue & rose	15
50 m. de e. "	blue	25
25 m. de e. 1869,	blue	20
50 m. de e. "	" (t 433) violet	25
100 m. de e. "	brown	25
200 m. de e. "	green	50
5 m. de e. 1869,	(t 434) green	3
10 m. de e. 1869,	(t 434) brown	5



1 m. de e. 1870,	b'v'n	1
2 m. de e. "	"	3
2 m. de e. "	buff	3
4 m. de e. "	bistre	2
10 m. de e. "	rose	3
25 m. de e. "	violet	8
50 m. de e. "	blue	12

		New Used
100 m. de e. 1870,	red	25
200 m. de e. "	brown	30
400 m. de e. "	green	25
12 c. "	lake	60
19 c. "	green	75
1 e. 600 m. "	violet	1 50
2 e. "	blue	2 00



6 c. de p. 1872,	blue	15
10 c. de p. "	lilac	15
12 c. de p. "	violet	5
25 c. de p. "	brown	15
40 c. de p. "	bistre	25
50 c. de p. "	green	25
5 c. de p. 1873,	pink	3
10 c. de p. "	blue	5
20 c. de p. "	violet	3
1 p. 1872,	(t 435) "	50
4 p. "	" brown	1 50
10 p. "	" green	3 00

Figure of Value in Centre, for Circulars.

1 c. de p. 1872,	(t 436) blue	2
2 c. de p. "	(t 434) lilac	2
5 c. de p. "	mauve	2
14 c. de p. 1873,	(t 436) green	5
	green	2



2 c. de p. 1874,	orange	2
5 c. de p. "	carmin	2
10 c. de p. "	green	2
20 c. de p. "	black	25
25 c. de p. "	brown	5
40 c. de p. "	violet	5
50 c. de p. "	blue	5
1 p. "	purple	10
4 p. "	brown	
10 p. "	claret	



2 c. de p. 1874,	yellow	5
5 c. de p. "	purple	3
10 c. de p. "	blue	3
20 c. de p. "	green	
25 c. de p. "	brown	5
40 c. de p. "	violet	5
50 c. de p. "	orange	5
1 p. "	green	15
4 p. "	carmin	
10 p. "	black	
10 c. de p. "	(t 437) brown	10



2 c. de p. 1875, brown	5
5 c. de p. " lilac	5
10 c. de p. " blue	3
20 c. de p. " orange	
25 c. de p. " carmine	3
40 c. de p. " brown	5
50 c. de p. " lilac	3
1 p. " black	15
4 p. " green	
10 p. " blue	
2 c. p. 1876, brown	
5 c. p. 1876, blue	
10 c. p. green	
20 c. p. brown	3
25 c. p. brown	5
40 c. p. brown	5
50 c. p. green	15
1 p. blue	
4 p. violet	
10 p. red	

OFFICIAL STAMPS.



New Used		
1/2 o. 1854, (media) yellow	8	
1 o. " (una) pink	8	
4 o. " (cuatro) green	8	
1 l. " blue		



1/2 o. 1855, yellow	6	10
1 o. " pink	6	10
4 o. " green	6	10
1 l. " blue		

WAR STAMPS.

5 c. de p. 1874, bl'k	5	5
10 c. de p. " blue		10
5 c. de p. 1875, (t 438) green		10
10 c. de p. " (t 438) violet		

Head in Oval.

5 c. p. green	
10 c. p. blue	
25 c. p. grey	
1 p. mauve	
5 p. rose	

FOR CITY OF MADRID.

1 c. 1853, (439) bronze	3	00
3 c. 1852, "		

SPANISH WEST INDIES, W. I. I.

8 REALS PLATA = 1 PESO, 100 CENTESIMOS = 1 ESCUDO OR PESETA.



New Used		
<i>Blue Paper.</i>		
1/2 r. p. 1855, blue	20	
1 r. p. " green	75	30
2 r. p. " carmine	1 50	50
2 1/4 r. p. " "	5 00	3 50

<i>Rough Paper.</i>		
1/2 r. p. 1856, blue	10	
1 r. p. " green	25	
2 r. p. " red		
2 1/4 r. p. " "		

<i>Smooth Paper.</i>		
1/2 r. p. 1857, blue	15	5
1 r. p. " green	30	10
2 r. p. " red	60	20
2 1/4 r. p. " "		60



1/4 r. p. 1864, black		
on yellow		
1/4 r. p. " black		
surch'd 66		
1/2 r. p. " gr'n on red	5	
1 r. p. " blue		
on orange	10	
2 r. p. " red on pink	20	
1/4 r. p. " (t 440) bl'k	40	

Same, Dated.

5 c. 1866, lilac		
10 c. " blue		5
20 c. " green		10
40 c. " rose		50
5 c. 1867, lilac	15	
10 c. " blue	15	5
20 c. " green		
40 c. " rose		



5 c. 1868, lilac		
10 c. " blue		5
20 c. " green		
40 c. " pink		
5 c. 1869, "		
10 c. " brown	5	
20 c. " orange	10	
40 c. " lilac		



New Used		
5 c. 1870, blue	25	
10 c. " green	5	
20 c. " brown	10	
40 c. " rose		



12 c. de p. 1871, lilac	10	10
25 c. de p. " blue	15	3
50 c. de p. " green	25	5
1 p. " brown	75	15



12 1/2 c. de p. 1873, gr'n	10	10
25 c. de p. " violet	15	3
50 c. de p. " brown	25	10
1 p. 1873, red "	75	
<i>Same as 1871 Issue.</i>		
12 1/2 c. de p. 1874, b'wn	10	10
25 c. de p. " blue	15	2
50 c. de p. " violet	25	10
1 p. " pink	75	



12 1/2 c. de p. 1875, purple	10	10
25 c. de p. " blue	15	5
50 c. de p. " green	25	10
1 p. " brown	75	



12 1/2 c. de p. 1876, green	10	7
25 c. de p. " violet	15	3
50 c. de p. " blue	25	5
1 p. " black	75	

ST. CHRISTOPHER, W. I. I.

12 PENCE = 1 SHILLING.



1 p. 1870,	pink	6	New Used
6 p. "	green	50	10



ST. DOMINGO, W. I. I.

8 REALS = 1 PESO.



1/2 r. 1862,	Italic letters, rose	
1 r. "	" green	
1/2 r. 1865,	Roman let. green	2 00
1 r. "	" buff	



1/2 r. 1866,	straw		
1 r. "	green	25	50
1/2 r. 1867,	pink	25	25
1 r. "	blue		
1/2 r. 1868,	lavender		
1 r. "	(t441) pink		
1/2 r. 1869,	flesh		
1/2 r. "	green		
1 r. "	"		
1 r. "	(t441)		
1 r. "	" blue		
1 r. "	" salmon		
1/2 r. 1871,	blue&black on pink	25	
1 r. "	dark green	25	15
1/2 r. 1873,	yellow	25	15

ST. HELENA, AF.

12 PENCE = 1 SHILLING.



New Used

1 p. 1863,	red	6	
2 p. "	yellow	15	
3 p. "	violet	25	
4 p. "	carmine	30	15
6 p. 1859,	blue	35	15
1 s. 1863,	green	60	10
5 s. 1868,	orange		75

ST. LUCIA, W. I. I.

12 PENCE = 1 SHILLING.



1 p. 1860,	red		
4 p. "	blue		
6 p. "	green		
1 p. 1865,	black	8	
4 p. "	yellow	25	20
6 p. "	violet	35	20
1 s. "	orange	60	15

ST. THOMAS & PRINCE ISLANDS, AF.

1000 REIS = 1 MILREIS.



5 r. 1870,	black	10
10 r. "	yellow	15
20 r. "	stone	20
25 r. "	red	25
50 r. "	green	40
100 r. "	violet	75

ST. VINCENT, W. I. I.

12 PENCE = 1 SHILLING.



1 p. 1860,	red	5
6 p. "	green	10
4 p. 1866,	blue	20
1 s. "	blue black	
4 p. 1870,	orange	35
1 s. "	brown	50
1 p. 1871,	black	6
1 s. 1872,	red	60
1 s. 1875,	pink	60

STRAITS SETTLEMENTS, A.

100 CENTS = 1 DOLLAR.



Printed Over Different Values of Indian Stamps.

1 1/2 c. 1867,	blue	15	10
2 c. "	brown	15	5
3 c. "	"	20	5
4 c. "	"	20	10
6 c. "	yellow	30	10
8 c. "	"	40	5
12 c. "	green	50	25
24 c. "	rose	75	15
32 c. "	yellow	1 00	20



Similar to Cut.

2 c. 1868,	brown		5
4 c. "	rose	12	5
6 c. "	ilic	20	5
8 c. "	orange	25	2
12 c. "	blue	35	5
24 c. "	green	75	3
32 c. "	vermillion		10
96 c. "	slate	1 50	10
30 c. 1872,(t442)	claret	75	5

SWEDEN, E.

48 SKILLINGS BANCO = 1 RIX DALER, 100 ORE = 1 RIKS DOLLAR.



3 s. b. 1855,	green		
4 s. b. "	blue		2
6 s. b. "	grey	25	15
8 s. b. "	yellow		15
24 s. b. "	red	50	30
5 o. 1858,	green		3
9 o. "	violet	12	10
12 o. "	blue	15	2
24 o. "	orange	25	2
30 o. "	brown	30	2
50 o. "	rose	50	3
3 o. 1863,(t443)	bistre		2
17 o. 1866,	" violet		10
20 o. "	" red		5



			New	Used
3 o.	1872,	brown	2	2
5 o.	"	green	3	3
6 o.	"	purple	3	3
12 o.	"	blue	3	3
20 o.	"	vermillion	12	3
24 o.	"	orange	15	3
30 o.	"	brown	20	3
50 o.	"	carmine	30	5
1 r. d.	"	(t 444) blue & brown	50	10

UNPAID LETTER STAMPS.



1 o.	1874,	black	2	
3 o.	"	pink	5	5
5 o.	"	brown	10	5
6 o.	"	orange	10	5
12 o.	"	red	15	5
20 o.	"	blue	20	5
24 o.	"	lilac	20	5
30 o.	"	green	25	5
50 o.	"	light brown	50	5
1 k.	"	blue & "	75	20

OFFICIAL STAMPS.



3 o.	1874,	brown	3	
5 o.	"	pale green	5	
6 o.	"	lilac	5	
12 o.	"	blue	10	5
20 o.	"	vermillion	15	10
24 o.	"	orange	20	5
30 o.	"	dark brown	25	5
50 o.	"	pink	50	10
1 k.	"	blue & brown	75	20

ENVELOPE STAMPS.



12 o.		blue	10
FOR STOCKHOLM.			
1855,	(t 445)	black	15
1866,		brown	15

SWITZERLAND, E.
100 RAPPEN OR CENTIMES = 1 FRANC.
CANTONAL ADMINISTRATION.

Geneva.

Eagle and Key.

New Used

5 c.	1844,	(t 446) gr'n	
5 c.	"	"	
5 c.	"	"	
10 c.	"	"	

ENVELOPE STAMP.

5 c.	1844,	green	
------	-------	-------	--

Basle.

2½ r.	1844,	(t 447) green and red	
-------	-------	-----------------------	--

Vaud.

4 c.	1844,	(t 448) black and red	
------	-------	-----------------------	--

5 c.	"	"	
------	---	---	--

Neufchatel.

5 c.	1844,	(t 449) black and red	
------	-------	-----------------------	--

Zurich.

Numeral of Value.

4 r.	1843,	(t 450) black	
6 r.	"	"	
4 r.	"	"	
6 r.	"	"	
2½ r.	1849,	(t 451) & red	

FEDERAL ADMINISTRATION.



2½ r.	1850,	(orts post) red & black	40
2½ r.	"	(poste locale) red & black	30
5 r.	"	(Rayon I.) red & blue	15
10 r.	"	(Rayon II.) yellow	5
5 r.	1852,	(Rayon I.) blue	5
15 r.	"	small figure, (R. III.) red	15
15 r.	"	large figure, (R. III.) red	5
15 c.	"	large figure, (R. III.) red	5



2 r.	1860,	grey,	15
5 r.	1854,	brown	3
10 r.	"	blue	3
15 r.	"	rose	3
20 r.	"	orange	3
40 r.	"	green	12
1 f.	"	grey	5



			New	Used
2 c.	1862,	grey	3	1
3 c.	"	black	5	5
5 c.	"	brown	5	1
10 c.	"	blue	10	2
20 c.	"	yellow	15	1
30 c.	"	red	25	5
40 c.	"	green	30	3
60 c.	"	bronze	35	5
1 f.	"	gilt	50	3
10 c.	1867,	rose	10	2
25 c.	1868,	green	25	3
30 c.	1867,	blue	25	3
50 c.	"	violet	35	3
2 c.	1874,	brown	3	1
15 c.	"	yellow	15	2

ENVELOPE STAMPS.



5 c.	1867,	brown	5	5
10 c.	"	rose	15	3
25 c.	1868,	green	15	5
30 c.	"	blue	20	5

NEWSPAPER BANDS.

2 c.	1871,	(t 452) rose	5
5 c.	"	"	



2 c.	1873,	rose	5
5 c.	"	"	10
2 c.	1874,	brown	5
5 c.	"	"	5

TASMANIA, O.

12 PENCE = 1 SHILLING.

Small Head, Victoria.

1 p.	1853,	(t 453) blue	
4 p.	"	(t 454) orange	15



1 p.	1858,	red	8	5
2 p.	"	green	5	5
4 p.	"	blue		5

Now Used
 6 p. 1860, (t 455) violet 35 5
 1 s. " " red 70 10



1 p. 1871, red 6 5
 2 p. " green 12 5
 3 p. " red brown 20 5
 4 p. " blue 25
 9 p. " " "
 10 p. " black
 5 s. " violet

TOLIMA, S. A.

See United States of Colombia.

TRINIDAD, W. I. I.

12 PENCE = 1 SHILLING.



1851, red
 " violet
 " blue
 " brown

White Paper.

1854, red
 " violet
 " blue
 " brown

Ground of Crossed Lines.

1865, blue
Bad Lithograph of Last.

1858, red
 " blue
 " grey
 1 p. 1859, red 10 3
 4 p. " purple 30 10
 6 p. " green 40 5
 1 s. " violet 60 10
 5 s. " (t 456) lake
 4 p. 1872, slate 5
 1 s. " orange 10

THURN UND TAXIS, E.

See Germany.

TURK'S ISLAND, W. I. I.

12 PENCE = 1 SHILLING.



1 p. 1867, red 6
 6 p. " grey 35
 1 s. " slate 60

TURKEY, E.

40 PARAS = 1 PIASTRE.



Now Used
 20 pa. 1863, yellow 15
 1 pi. " lilac 15
 2 pi. " blue 25
 5 pi. " pink 20



10 pi. 1865, green 10 10
 20 pa. " yellow 10 10
 1 pi. " lilac 10 10
 2 pi. " blue 15 15
 5 pi. " carmine
 25 pi. " orange
 10 pa. 1868, lilac 15 15
 20 pi. " green 10 10
 1 pi. " yellow 5 5
 2 pi. " orange 10 10
 5 pi. " blue 10 10
 25 pi. " vermilion

UNPAID LETTER STAMPS.

Same as Same Date Regular Issue.

20 pa. 1863, brown
 1 pi. " "
 2 pi. " "
 5 pi. " "
 20 pa. 1865, "
 1 pi. " " 10 10
 2 pi. " " 10 10
 5 pi. " " 15 15
 25 pi. " " "
 20 pa. 1868, bistre 10 5
 1 pi. " " 5 5
 2 pi. " " 10 10
 5 pi. " " 15 15
 25 pi. " " "

FOR CONSTANTINOPLE.

Star Over Crescent, Colored Paper.

5 pa. 1865, blue 10
 20 pa. " green 10
 40 pa. " rose 10

NEWSPAPER STAMPS.

Turkish Characters, in Circle.

1866, pink
 " blue
 " green
 " yellow
 " white

ENVELOPE STAMPS.



Now Used
 1 pi. 1870, yellow 25
 1 1/2 pi. " brown 10
 3 pi. " orange
 6 pi. " violet

TUSCANY, E.

60 QUATTRINI = 20 SOLDI = 12 CRAZIE = 1 LIRA.



Blue Paper.

1 q. 1849, black 25
 1 s. " yellow 30
 2 s. " red
 1 c. " crimson 5
 2 c. " blue 5
 4 c. " green 5
 6 c. " blue 5
 9 c. " violet brown 5
 60 c. " red " 4 00

White Paper.

1 q. 1851, black 25 25
 1 s. " yellow 30 30
 1 c. " crimson
 2 c. " blue
 4 c. " green
 6 c. " blue
 9 c. " brown

PROVISIONAL ISSUE



1 c. 1859, violet 10
 5 c. " green 16
 10 c. " brown 5
 20 c. " blue 5
 40 c. " red 5
 80 c. " rose 10
 3 l. " yellow

TWO SICILIES, E.

100 GRANI = 50 TORNESI = 1 DUCAT.

Naples.

Arms in—

1/2 g. 1857, circle, lake 45 30
 1 g. " square, " 15 5
 2 g. " octagon, " 20 5
 5 g. " rectangle, " 30 10
 10 g. " hexagon, " 40 10
 20 g. " diamond, " 50 15
 50 g. " oval, " 75 50

PROVISIONAL GOVERNMENT.

1/2 t. 1860, blue
1/2 t. " (t 457) "



1/2 t. 1861,	green	10	New Used
1/2 t. " "	orange	10	10
1/2 t. " "	black	10	5
1/2 t. " "	blue	10	10
1/2 t. " "	rose	10	5
5 t. " "	lilac	10	
10 t. " "	orange	10	
20 t. " "	yellow	10	10
50 t. " "	grey	10	

Sicily.

Portrait Ferdinand II.

1/2 t. 1859,	orange	20
1/2 t. " "	olive green	15
1/2 t. " "	blue	15
1/2 t. " "	red	15
10 t. " "	dark blue	15
20 t. " "	dark violet	15
50 t. " "	crimson	20

UNITED STATES OF COLOMBIA, S. A.

100 CENTAVOS = 1 PESO.



5 c. 1859,	brown
5 c. " "	lilac
10 c. " "	yellow
20 c. " "	blue



1/2 c. 1860,	green	50
5 c. " "	violet	1 00
5 c. " "	blue	50
10 c. " "	brown	50
10 c. " "	vermilion	1 00
20 c. " "	blue	50
1 p. " "	vermilion	



2 1/2 c. 1861,	black
5 c. " "	yellow
5 c. " "	buff
10 c. " "	blue
20 c. " "	red
1 p. " "	rose



10 c. 1862,	blue	New Used
20 c. " "	rose	
50 c. " "	green	
1 p. " "	lilac	



5 c. 1863,	yellow
10 c. " "	blue
20 c. " "	red
50 c. " "	green



5 c. 1864,	orange	50
10 c. " "	blue	
20 c. " "	rose	
50 c. " "	green	
1 p. " "	violet	



1 c. 1865, (t 458)	rose	5
5 c. " "	orange	15
10 c. " "	violet	15
20 c. " "	blue	20
50 c. " "	green	75
1 p. " "	vermilion	1 50
2 1/2 c. " "	Tria. lilac	1 00

Various Designs.

5 c. 1867, (t 459)	yel'w	
10 c. " "	(t 460) lilac	15
20 c. " "	(t 461) blue	15
50 c. " "	(t 462) green	50
1 p. " "	(t 463) rose	
5 p. " "	(t 464) green	
10 p. " "	(t 464) verm'n	
5 c. 1869, (t 465)	yel'w	15
10 c. " "	(t 466) lilac	5
20 c. 1870, (t 467)	blue	15
50 c. " "	(t 468) green	35
1 p. " "	(t 469) rose	
1 c. 1872, (t 470)	green	5
1 c. 1873, " "	pink	5
2 c. 1871, (t 471)	b'wn	10
2 1/2 c. 1869, (t 472)	bl'k	
	on violet	10
5 c. 1870, (t 473)	yel'w	20
10 c. 1874, (t 474)	violet	25
5 p. 1870, (t 475)	bl'k	
	on green	
10 p. " "	(t 476) black	
	on vermilion	

Various Designs.

5 c. 1876, (t 548)	lilac	10
10 c. " "	(t 549) brown	5
20 c. " "	blue	25
50 c. " "	green	
1 p. " "	red	
5 p. " "	b. on green	
10 p. " "	b. on red	

REGISTRATION STAMPS.

5 c. 1865, (t 477)	bl'k	
5 c. 1870, (t 478)	"	25
5 c. 1865, (t 479)	"	
5 c. 1870, (t 480)	"	

ADDITIONAL POSTAGE STAMPS.

Various Designs.

25 c. 1866, (t 481)	blue	25
50 c. " "	(t 482) yellow	10
1 p. " "	(t 483) blue	
25 c. 1870, (t 484)	"	10



Bolivar.



10 c. 1863,	rose
10 c. " "	green
1 p. " "	rose



Various Designs Similar to Out.

5 c. 1873, (t 502)	blue
10 c. " "	(t 503) violet
20 c. " "	(t 504)
	yellow green
80 c. " "	(t 505) verm'n
5 c. 1874, (t 506)	blue

Cundinamarca.



Various Designs Similar to Cut.

5 c. 1870, (t 507) blue	25
10 c. " (t 508) red	
50 c. 1873, (t 509) green	
1 p. " (t 510) red	

Tolima.

5 c. 1870, (t 511) bl'k



Various Designs Similar to Cut.

5 c. 1871, (t 512) b'wn	25
10 c. " (t 513) blue	
50 c. " (t 514) green	
1 p. " (t 515) red	
15 c. 1873, (t 516) bl'k	
20 c. " (t 517) blue	



URUGUAY, S. A.

100 CENTAVOS = 1 REAL,
100 CENTAVOS = 1 PESO.



60 c. 1856,	blue	Y
80 c. "	green	
1 r. "	red	



Value Repeated.

120 c. 1856,	blue
180 c. "	green
240 c. "	red

Thin Figures.

New Used

60 c. 1859,	lilac	
80 c. "	orange	
100 c. "	carmine	
120 c. "	blue	
180 c. "	green	
240 c. "	red	

Thicker Figures.

60 c. 1859,	violet	15
80 c. "	orange	25
100 c. "	carmine	
120 c. "	blue	
180 c. "	green	



06 c. 1864,	ros0	25
08 c. "	green	25
10 c. "	ochre	25
12 c. "	blue	25

Same, Surcharged.

5 c. 1865,	blue	
10 c. "	green	
15 c. "	bistre	
20 c. "	rose	

Large Numeral of Value.

1 c. 1866,	black	5
5 c. "	blue	10
10 c. "	green	10
15 c. "	orange	15
20 c. "	rose	15

ENVELOPE STAMPS:

Arms in Oval.

5 c. 1866,	blue	20
10 c. "	green	35
5 c. "	blue	
10 c. "	green	



VANCOUVER'S ISLAND.

See British Columbia.

VAN DIEMAN'S LAND.

See Tasmania.



VENEZUELA, S. A.

100 CENTAVOS = 8 REALS = 1 PESO.



1/2 r. 1859,	orange	10
1 r. "	blue	25
2 r. "	red	35

Arms.

1/4 c. 1861,	green	
1/2 c. "	brown	
1 c. "	"	



New Used

1/2 c. 1863,	red	
1 c. "	slate	
1/2 r. "	orange	15
1 r. "	blue	25
2 r. "	green	50



1/2 c. 1867,	green	
1 c. "	blue green	
1/2 r. "	violet	10
1 r. "	red	10
2 r. "	yellow	10

Same, Surcharged with Two Lines of Small Type.

1 c. 1874,	lilac	
2 c. "	green	
1/2 r. "	rose	10
1 r. "	red	10
2 r. "	yellow	10

La Guaira and St. Thomas.

Steamship and Value.

1/2 r. 1864,	rose	
2 r. "	green	10
1/2 r. 1865,	blue	
2 r. "	yellow	10
1/2 r. 1869, (t 518)	green	
2 r. "	rose	

VICTORIA, O.

12 PENCE = 1 SHILLING.



1 p. 1852,	red	25
2 p. "	ash	25
2 p. "	blue	10



Similar to Cut.

1 p. 1856,	green	75
2 p. 1852,	brown	10
6 p. 1861,	blue	10



- New Used**
- 1 s. 1854, (reg.) pink and blue 20
 - 6 p. " orange 10
 - 2 s. 1858, green 10
 - 6 p. 1855, (too late) lilac and green 10
 - 6 p. 1862, black 10
 - 2 s. 1864, blue on gr'n 5
- Profile in Circle Octagonal.*
- 1 s. 1854, blue 10
 - 1 s. 1865, blue on blue 5



- 1 p. 1859, green 5
- 2 p. 1860, violet 10
- 4 p. 1859, red 10
- 1 p. 1862, (no em) gr'n 5



- 3 p. 1861, blue 10
 - 4 p. 1863, rose 25
 - 6 p. 1862, black 5
 - 6 p. " orange 10
 - 3 p. 1866, claret
- Head in Circle.*
- 1 p. 1864, green 2
 - 2 p. " violet 2
 - 4 p. 1863, rose 2
 - 8 p. 1865, orange 20
 - 2 p. 1873, green 5

- Profile in Oval, Various Frames.*
- 6 p. 1862, (t519) black 5
 - 6 p. " " " 5
 - 3 p. 1866, (t520) lilac 10
 - 6 p. 1865, (t521) blue 8
 - 10 p. " " slate 10
 - 10 p. 1866, " brown 10
 - 3 p. 1869, (t519) or'ge 5
 - 2 p. 1870, (t522) violet 15
 - 9 p. 1873, (t521) b'wn 30
 - 2 p. " (t523) violet 2
 - 2 p. 1874, (t524) rose 2
- Profile in Circle.*
- 5 s. 1868, (t525) blue on yellow 25
 - 5 s. " (t525) red and blue 25
 - 9p. 1873, (t526) brown 10

- ENVELOPE STAMPS.**
- Head in Oval.*
- 2 p. 1870, (t527) pink 15
- NEWSPAPER BANDS.**
- 1 p. 1869, (t528) gr'n 5

VIRGIN ISLANDS, W. I. I.
12 PENCE = 1 SHILLING.



- New Used**
- Similar to Cut.*
- 1 p. 1866, green 6
 - 4 p. 1867, red 25
 - 6 p. 1866, rose 40
 - 1 s. 1867, red & bl'k 75
 - 1 s. " " " 75



WESTERN AUSTRALIA.
O.
12 PENCE = 1 SHILLING.

- Swan in Centre.*
- 2 p. 1857, bl'k on red 50
 - 4 p. " blue 50
 - 6 p. 1856, bronze 1 50
 - 1 s. 1857, (t529) pale brown 50



- 1 p. 1860, black 15
- 2 p. " red 15
- 4 p. " blue 60
- 6 p. " green 5
- 1 p. 1862, red 5
- 2 p. " blue 5
- 4 p. " vermilion 3
- 6 p. " violet brown 3
- 1 s. " light green 3
- 1 p. 1865, straw 3
- 2 p. " yellow 3
- 4 p. " rose 5
- 6 p. " violet 6
- 1 s. " dark green 15
- 3 p. 1872, (t530) b'wn 15



WURTEMBERG, E.
60 KREUZERS = 1 GULDEN.



- 1 k. 1851, buff 12
- 3 k. " yellow 5
- 6 k. " green 3
- 9 k. " pink 3
- 18 k. " violet 15



- New Used**
- 1 k. 1857, brown 5
 - 3 k. " yellow 3
 - 6 k. " green 3
 - 9 k. " rose 5
 - 18 k. " blue 10
 - 1 k. 1862, green 2
 - 3 k. " rose 2
 - 6 k. " blue 5
 - 9 k. " brown 4
 - 18 k. " orange 5
 - 7 k. 1869, blue 5
 - 70 k. 1873, claret 5



- 1 k. 1869, green 3
- 3 k. " rose 6
- 7 k. " blue 15
- 14 k. " orange 30
- 2 k. 1873, " 5
- 9 k. " brown 20



- 3 pf. 1875, green 3
- 5 pf. " violet 3
- 10 pf. " rose 3
- 20 pf. " blue 3
- 25 pf. " brown 3
- 50 pf. " grey 5
- 2 m. " orange 20

RETURNED LETTER STAMPS.

- 1866, (t531) black 15

ENVELOPE STAMPS.

Numeral in Oval, Octagonal.

- 1 k. 1865, green 4
- 3 k. 1863, rose 5
- 6 k. " blue 10
- 9 k. " brown 10

MONEY ORDER ENVELOPES.

Same on Yellow Paper.

- 4 k. 1867, yellow 4
- 6 k. " blue 4
- 7 k. " green 4
- 9 k. " brown 4
- 7 k. 1873, blue 4
- 14 k. " violet 4

TO THE TRADE ONLY.—Our wholesale list will be sent to dealers on receipt of a copy of all their lists, &c.

Electrotypes of any engraving in this work, 60c. each; post-free, 65c. Packets of 12, all different, price \$5.00.

THE COATS OF ARMS OF THE WORLD.



(RUSSIA.)

Uncolored fac simile showing size.

This magnificent chart contains accurate representations of the armorial bearings of the nations of the world, all of which are beautifully and correctly emblazoned in gold and silver, and their true colors.

As a sheet for framing, it is an acquisition to any drawing room, and is indispensable in the library or study.

As a guide to determine the nationality of foreign coins or postage stamps, (most of which bear the issuing countries' arms), it will be found of great service. While cut up and inserted in stamp albums, they will be found to add much to the appearance of the page.

Printed on fine heavy paper for framing, or on the same quality of thin paper for inserting in albums. Price, 50c.

THE MERCHANT FLAGS OF THE WORLD.



AUSTRIAN-ITALY.



BRAZIL.



FINLAND.

Uncolored fac-similes, showing size and style.

"These brilliant colored Flags faithfully represent the emblems of the different nations of the earth, and as such are a great acquisition to any Album, while the exceedingly low price (25 cents) at which they are published, places them within the reach of all."

"This Chart containing many Flags never before published, has been collected with great care, and can be relied upon as being strictly accurate, and by its aid the nationality of any ship may be easily determined, as it gives the Flag of the NATION instead of the gorgeous piece of bunting which simply belongs to one family, and is seldom, if ever, seen out of their country."

"These sheets possess three great advantages (to the Collector) over any other we are acquainted with, which consist in the facts that there is only one Flag to each country: more nations represented than have heretofore been given, and only Flags of those countries which issue postage stamps. These we consider of great importance to those who buy them to put in albums, as they can use them all instead of having to throw away half the purchase. The colors are very brilliant, and withal correct, and being printed on very thin paper, the book is not swelled to an inordinate thickness."

Beautifully and correctly printed in FIVE colors on fine heavy paper for framing, or thin paper for albums. Price only 25 cents.

In ordering please state which paper is required.

POSTAGE STAMP PORTRAITS OF RULERS

FOR INSERTION IN

ALL POSTAGE STAMP ALBUMS.

These Photographs are the size of Postage Stamps, and when inserted in the spaces prepared for them, add considerable to the interest of an album.

SET OF 48 PORTRAITS Price \$1.00.

List of subjects, the numbers affixed correspond to the spaces in *Scott's American & Common Sense Albums*

- | | | |
|-------------------------------------|---|--|
| 43. United States.—G. Washington | 39. Italy.. Victor Emanuel II. | 38. Russia.. Alexander II. |
| 44. " " A. Lincoln. | 32. Mecklenburg Schwerin.. Frederick Francis. | 29. Sandwich Islands.. Kamehameha III. |
| 45. " " U. S. Grant. | 34. Mecklenburg Strelitz.. Frederick William | 36. Sandwich Islands.. Kamehameha IV. |
| 27. Austria—Francis Joseph I. | 7. Mexico.. Maximilian I. | 22. Sandwich Islands.. Kamehameha V. |
| 10. Baden—Frederick. | 20. Modena.. Francis V. | 9. Saxony.. Frederick Augustus |
| 28. Bavaria—Maximilian. | 41. Naples.. Ferdinand II. | 33. " John |
| 6. " Louis II. | 4. Norway.. Charles XV. | 41. Sicily.. Ferdinand II. |
| 21. Belgium—Leopold I. | 18. Oldenburg.. Peter. | 11. Spain.. Isabella II. |
| 24. Brazil—Dom Pedro II. | 31. Parma.. Robert I. | 42. Sweden.. Charles XV. |
| 5. Brunswick—William. | 17. Portugal.. Maria II. | 25. Turkey.. Abdul Aziz Khan |
| 47. Confederate States—Jeff. Davis. | 40. " Pedro V. | 13. Tuscany.. Ferdinand IV. |
| 3. Denmark—Frederick VII. | 30. " Louis I. | 8. Wurtemberg.. William I. |
| 37. " Christian IX. | 34. Prussia.. William I. | 15. " Charles I. |
| 2. France—Napoleon III. | 23. " Frederick William IV. | |
| 46. Great Britain—Victoria | 35. Roman States.. Pius IX. | |
| 14. Greece—George I. | 12. Roumania.. Couza. | |
| 19. Hanover—George V. | | |
| 16. Holland.. William III. | | |

The Author.

THE COMMON SENSE POSTAGE STAMP ALBUM.

—:0:—

It has received the Highest Prize wherever exhibited, and was awarded the only Diploma for Stamp Albums at the American Institute.

It has specially designed spaces for the reception of every Postage Stamp ever issued, rather larger than the Stamp itself, thus showing a neat border round each, adding much to the appearance of a set. Each space contains the description of the stamp it is designed for, thus making it nearly impossible to make mistakes in arranging the collection. It is brought up to the present time, having spaces provided for the Stamps of The Deccan, Fiji Islands, Japan, &c., &c., also, for the new issues of Canada, Ceylon, Luzon, Norway, Prince Edward Island, United States Official, &c., &c.

It's bound in the strongest manner, by the most skilful workman, with the best materials. The following styles and prices now ready :

CLOTH, gilt lettering, back and sides,	- - - - -	2 50
“ guards, clasps, &c.,	- - - - -	3 50
“ extra thick paper, gilt clasp, printed on one side of the paper only,	- - - - -	5 00
HALF MOROCCO, extra fine, heavy paper, gilt clasp,	- - - - -	6 00
FRENCH MOROCCO, fine heavy paper, gilt edges, two gilt clasps	- - - - -	8 00
HALF MOROCCO, bound very strong, every other page blank, making it “perfectly permanent;”	- - - - -	
warranted ten years. Price only	- - - - -	10 00
HALF LEVANT MOROCCO, gilt edges, a perfect book,	- - - - -	15 00
FULL LEVANT or RUSSIA, full gilt,	- - - - -	25 00

EXTRACT FROM PREFACE.

“Special care has been taken to leave plenty of room for those governments that are still in existence, so as to accommodate future issues, and blank pages are left at appropriate intervals for the reception of Stamps from any countries that have not at present issued Postage Labels; but should any one desire additional leaves, specially designed pages to correspond with the body of the book are prepared for all new issues as soon as they are received. These are supplied by the publishers at a nominal rate, and can easily be inserted in their proper order by gumming them to the guards bound with the book for that purpose, thus making the Album PERFECTLY PERMANENT, and as good after ten years as one just published.”

UNITED STATES.									
Official Stamps, Issued 1873.									
EXECUTIVE DEPARTMENT.									
<i>Similar, to General Issue, Name, Carmine, 1c.</i>	2c.	3c.	6c.	10c.					
DEPARTMENT OF STATE.									
<i>Name, Green, 1c.</i>	2c.	3c.	6c.	7c.	10c.	12c.	16c.	20c.	
<i>Name, Green, 30c.</i>	<i>Profile of Seward to left, in oval, Black & Green, 2c.</i>			5c.	10c.	20c.	<i>Name, Green, 90c.</i>		

Specimen page of Common Sense Album reduced to one-quarter original size.

ALBUM FOR BEGINNERS,

KNOWN AS

“THE PHILATELIST” AND “AMERICAN.”

These neat little albums are specially designed for beginners or young persons, and are well calculated to contain a collection of a thousand stamps, squares being provided for nearly fifteen hundred.

The size of the Album is large octavo, containing from 48 to 100 pages, according to price. Each page is surmounted by the name of the country whose stamps it is intended to contain, and contains 30 spaces, giving accommodation to that number of stamps on a page, and when neatly filled has a beautiful and rich appearance.

We confidently offer this book to our customers as a marvel of cheapness; it being far superior to any Album ever before published at the price.

*Flexible covers, price only	- - - - -	\$ 25
Half Cloth, with description of every stamp,	- - - - -	50
Cloth, gilt lettering,	- - - - -	75
“ “ “ guards, &c., with additional spaces for revenue stamps,	- - - - -	1 00
*An Illustrated Descriptive Guide, to facilitate arranging stamps in this Album is published	- - - - -	
48 pages; price	- - - - -	25

AUSTRIA.

Specimen page of Album for Beginners reduced to one-sixth original size.

THE REVENUE STAMP ALBUM.

—:O:—

This Album is specially designed to contain the Revenue Stamps of the world, great care having been bestowed in its preparation. It contains the only complete list of U. S. Revenue Stamps ever published, and is well calculated to contain in a convenient and elegant form these interesting mementoes of the greatest struggle the world has ever witnessed, and vividly illustrates the darkest pages of our national history. It is made uniform with the Common Sense Postage Stamp Album, and forms an interesting second volume to that work.

EXTRACT FROM PREFACE.

In the present state of knowledge concerning revenue stamps, it is simply impossible to make the book perfect, nor would it be advisable to do so, if the necessary data were at hand, as the supply of these labels is, at present, very limited, which would in that case, make it impossible to fill the Album. Perhaps the greatest charm in collecting revenue stamps consists in the uncertainty and romance connected with it; nearly every amateur having specimens in his album which are totally unknown to his brother collectors, and there being no definite value or degrees of value yet established; but, of course, this state of things is rapidly passing away, and ere many years, or even months have elapsed, collectors will awake to the knowledge that they have some priceless rarities among their revenue stamps, which, perhaps, have only cost them two or three cents.

Taking these facts into consideration, spaces have only been prepared for well-known and obtainable series of foreign revenue stamps; but by the plentiful distribution of blank pages throughout the book, ample room has been secured for all fiscal stamps that may be acquired by the owner. In regard to the emissions of the United States the case is very different, therefore great care has been taken to provide space for every stamp that has ever been issued by our own country, with the exception of beer, spirit, and tobacco stamps, which it has been pronounced illegal to collect, but as large numbers do collect them, sufficient blank pages have been left for their accommodation, and taking into consideration their large size, they can be arranged with equal facility without the aid of lines.

CLOTH, gilt lettering, &c.,	\$3 00
“ EXTRA, heavy paper, large number of additional leaves, clasps, &c.,	5 00
HALF MOROCCO, twice the thickness of last,	10 00
“ LEVANT, gilt edges, very strong and handsomely bound,	15 00
FULL “ or Russia; a magnificent book	25 00

Postage 25 cents on first two; the others are too heavy to be sent by post.

CANADA (Bill Stamps).

FIRST ISSUE.

<i>Profile of Victoria in oval. Blue. 1c.</i>	2c.	3c.	4c.	5c.	6c.
---	-----	-----	-----	-----	-----

7c.	8c.	9c.	<i>Same as last, in octagon. Blue. 10c.</i>	20c.	30c.	40c.	50c.
-----	-----	-----	---	------	------	------	------

<i>Same as last, in oval. Blue. 1d.</i>	2d.	3d.
---	-----	-----

Specimen page of Revenue Stamp Album reduced to one-quarter original size.

THE MONOGRAM ALBUM.

—:O:—

THE BEST AND ONLY CHEAP ALBUM FOR MONOGRAMS.

This series is beautifully printed on heavy tinted paper, with a very chaste design surrounding the page.

No. 1 to contain 100, bound in Imitation Morocco, with gilt design on cover; very neat; only	50c.
No. 2 to contain 250; very strong and handsomely bound in the best English Cloth. Price,	\$1 25
No. 3 to contain 500; magnificently bound in French Morocco; gilt design on cover and gilt edges. Price only	3 00

—:O:—

THE AUTOGRAPH ALBUM.

Much has been said and written concerning the collection of autographs; many learned men maintaining that the hand writing is a sure guide to the character of the writer; be this as it may, it is certain that from the earliest authentic records of history to the present day, there has never been lack of diligent searchers after the signatures of eminent men, and no one who has studied the subject, can doubt the historic value of narratives authenticated by the signatures of well-known characters, but it is not for this class of autographs that the present volume is intended, although if desired these can be pasted with good effect on the blank pages; but rather to contain a collection of the signatures of our friends and acquaintances, and thus, perhaps, be the means of preserving the hand-writing of many loved and lost ones, or at least help to pass many a pleasant hour amongst our friends by comparing hand writing and making guesses at character.

Cloth, gilt - - - - - \$1 30



The International Postage Stamp Album.

Illustrated with a specially engraved map of the world showing the location of every stamp issuing country.



THE EVENT OF 1876!!

NOW READY FOR DELIVERY.



JAPAN.



GOVERNMENT—Empire. AREA—168,600 square miles. POPULATION—31,866,380. CAPITALS—Tokio, formerly called Yedo, with 800,000 inhabitants. Yedo, with 780,321 inhabitants. Taiiko, formerly called Kioto, with 800,000 inhabitants. MIYAKO MORIUMOTO succeeded 18th February, 1867.
STANDARD COIN—1 yen, (1 dollar) = 100 ruppoo or sen, = 10,000 mon or sepi.

1871 ISSUE.				1872 ISSUE.			
	1 C. BLUE	2 C. VERMILION	3 C. GREEN		1 C. BLUE	2 C. VERMILION	3 C. GREEN

1873-4 ISSUE.

		3 C. RED.	4 C. RED.	5 C. BROWN	6 C. GREEN	7 C. VIOLET.	8 C. BROWN.
---	---	--------------	--------------	---------------	---------------	-----------------	----------------


1874-5.

	2 C. BROWN	3 C. YELLOW.	4 C. GREEN	5 C. ORANGE		7 C. LILAC.	8 C. GREEN.
---	---------------	-----------------	---------------	----------------	---	----------------	----------------

LAGOS.

GOVERNMENT—British Colony since 1861. AREA—5,000 square miles. POPULATION—62,091.
STANDARD COIN—Same as in Great Britain.

1874 ISSUE.

1 C. GREEN		3 C. BROWN	4 C. ROSE.	5 C. GREEN.	6 C. ORANGE.
---------------	---	---------------	---------------	----------------	-----------------

The above *fac-simile* of the International Stamp Album although reduced to one-quarter the size, gives a fair idea of the appearance of this new album. The pictures illustrating the designs of every series, make the inserting of the stamps in their proper places so plain, that the youngest child can not possibly make a mistake. It contains a space for every stamp including some series which have been announced, but not yet issued, such as Finland, Phillipine Islands &c., ample space for new issues, and is printed, even the cheap editions, on the heaviest paper.

PRICES :

- | | |
|---|----------------------------|
| Boards, Half Cloth, | \$1.50, post free, \$1.75. |
| Cloth, Magnificently gilt, | 2.50, " " 2.75. |
| PRINTED ON ONE SIDE OF THE PAPER ONLY. | |
| Cloth, Magnificently Gilt, Clasps, &c. | 6.00, post free, 6.50. |
| French Morocco, Full Gilt, Clasps, &c., | 8.00, " " 8.50. |
| Half Morocco, Library Style, Gilt, Clasps, &c., | 10.00, " " 10.50. |