

NEW BRUNSWICK

No. 130.



POSTAGE

STAMP EMPORIUM.



All Stamps Warranted Genuine.

SECOND EDITION, REVISED AND CORRECTED,
DISCRIPTIVE PRICE LIST AND CATALOGUE



POSTAGE STAMPS,

BRITISH, AMERICAN, FOREIGN AND COLONIAL,

FOR SALE BY

ANDREW D. ROBERTSON,

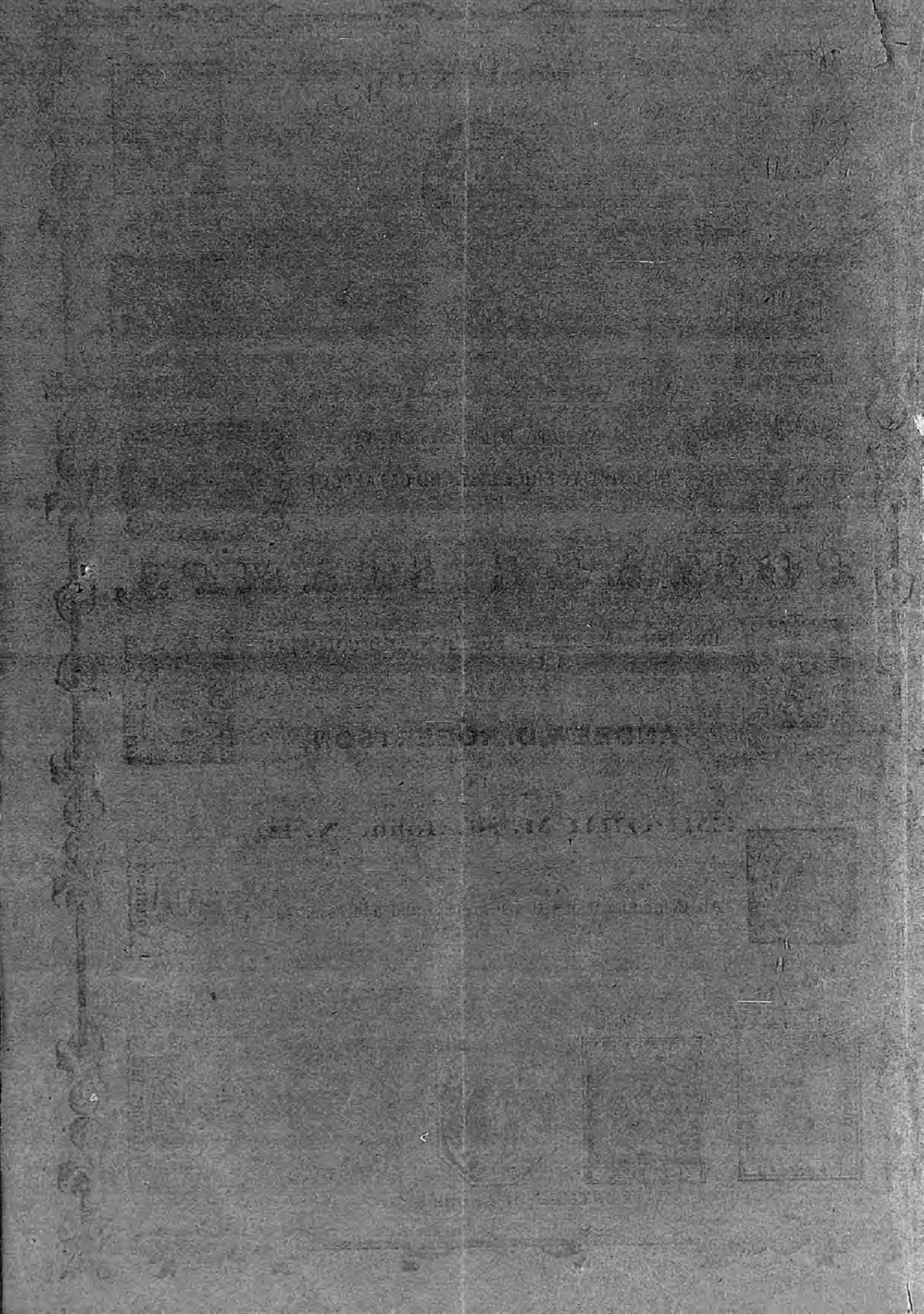
AT THE

EMPORIUM, St. John, N. B.

All Communications to be prepaid and addressed to
Box No. 23, Post Office.



PRINTED BY H. CHUBB & CO.



SECOND EDITION, REVISED AND CORRECTED

DESCRIPTIVE

PRICE CATALOGUE

OF

FOREIGN AND COLONIAL

Postage Stamps,

FOR SALE BY

ANDREW D. ROBERTSON,

POST OFFICE BOX 23,

ST. JOHN, NEW BRUNSWICK.

PRICES MARKED IN GOLD.

PRINTED BY H. CHUBB & CO., PRINCE WM. STREET,
SAINT JOHN, N. B.

1866.

ANDREW D. ROBERTSON'S

DESCRIPTIVE PRICE CATALOGUE

OF

POSTAGE STAMPS.



ABBREVIATIONS.—Diam. *Diamond*; Obl. *Oblong*; Oct. *Octagonal*; Rect. *Rectangular*; Tria. *Triangular*.

		Unused. Used.				Unused. Used.	
		\$ Cts.	\$ Cts.			\$ Cts.	\$ Cts.
Antigua.							
<i>Adhesive Stamps.</i>							
1 d, rect.	red	6	4	5 kreuzer, rect,	red	75	4
6 d do	green	20	10	10 " "	brown	75	4
Argentine Confederation.							
<i>Adhesive Stamps.</i>							
1860.							
5 centav, rect,	carmine			15 " do	blue	75	4
1861.							
5 centav, rect,	red	20		1861.—HEAD TO RIGHT.			
10 do do	green	25		2 kreuzer, oval,	yellow	15	3
15 do do	blue	30		3 " do	green	15	3
Argentine Republic.							
<i>Adhesive Stamps.</i>							
1862.							
5 centavos, rect,	rose	20	15	5 " do	red	20	5
10 do do	green	25	20	10 " do	brown	25	5
15 do do	blue	30	25	15 " do	blue	30	3
1864.—BUST OF PRESIDENT.							
5 centavos, rect,	rose	15	10	1863.—EAGLE.			
10 do do	green	20	15	2 kreuzer, oval,	yellow	6	3
15 do do	blue	25	21	3 " do	green	10	3
Austria.							
<i>Adhesive Stamps.</i>							
1850.—ARMS.							
1 kreuzer, rect,	orange	1 00	10	5 " do	rose	15	3
2 do do	black	1 00	10	10 " do	blue	20	3
3 do do	red	75	3	15 " do	cinnamon	25	3
6 do do	brown	75	3	<i>Newspaper Labels.</i>			
3 do do	blue	75	3	1857.—HEAD OF MERCURY.			
1858.—HEAD TO LEFT.							
2 kreuzer, rect,	yellow	75	10	Square,	blue	30	10
3 do do	black	1 50	5	" "	yellow	6 50	4 00
3 do do	green	75	4	" "	pink	6 50	
1861.—HEAD TO RIGHT.							
3 kreuzer, oval,	green	20	5	1858.—HEAD TO LEFT.			
5 " do	red	35	5	Rect,	blue	20	
10 " do	red-brown	50	5	" "	lavander	20	4
15 " do	blue	60	5	1861.—HEAD TO RIGHT.			
<i>Envelope Stamps.</i>							
1861.—HEAD TO RIGHT.							
ARMS.							
1 kreuzer, square,							
2 " do							
2 " do							
2 " do							

Price Catalogue of Postage Stamps.

3

		Unused. Used.				Unused. Used.	
		\$	Cts.	\$	Cts.	\$	Cts.
20	kruezer, oval, orange		65		6		
25	" " dark-brown		80		10		
30	" " violet	1	00		20		
35	" " light-brown	1	00		20		
1863.—EAGLE.							
3	kruezer, oval, green		8		3		
5	" " rose		15		3		
10	" " blue		25		3		
15	" " brown		30		4		
25	" " violet		50		6		
Austrian Italy.							
<i>Adhesive Stamps.</i>							
1850.—ARMS.							
5	centes, rect, orange			75			
10	" " black			15			
15	" " red			6			
30	" " brown			6			
45	" " blue			6			
1858.—HEAD TO LEFT.							
2	soldi rect, yellow		10		10		
3	" " black		75		10		
3	" " green		10		10		
5	" " red		75		5		
10	" " brown		75		6		
15	" " blue		75		6		
1861.—HEAD TO RIGHT.							
5	soldi, oval, red		20		5		
10	" " brown		20		5		
25	" " blue		20		5		
1863.—ARMS.							
2	soldi, oval, yellow		8		3		
3	" " green		10		3		
5	" " rose		15		5		
10	" " blue		20		5		
15	" " brown		30		5		
ENVELOPE STAMPS.							
3	soldi, oval, green		8		5		
5	" " red		10		5		
10	" " brown		15		6		
15	" " blue		20		6		
20	" " orange		30		6		
25	" " dark-brown		35		8		
30	" " violet		40		10		
35	" " pale-brown		50		20		
Australia, (South.)							
<i>Adhesive Stamps.</i>							
1d	rect, green			7	4		
2d	" " carmine			12	10		
2d	" " red				40		
6d	" " deep-blue				10		
6d	" " light-blue				10		
1s	" " orange				12		
1s	" " brown				12		
9d	" " iron-grey				12		
Australia, (Western.)							
<i>Adhesive Stamps.</i>							
1d	oblong, black		25		15		
1d	" " rose		10		8		
2d	oblong, orange				35		18
2d	do " blue				25		12
4d	do " blue				35		18
6d	Oct. bronze				35		20
6d	oblong, violet, carmine				40		20
6d	do " green				35		18
6d	do " purple				40		20
1s	oval, marone				50		20
Baden.							
<i>Adhesive Stamps.</i>							
1850.—FIGURE.							
1	kreuzer, square, buff					12	
3	do do yellow					6	
6	do do green					6	
1855.—FIGURE.							
1	kreuzer, square, white					12	
3	do do green					6	
3	do do blue					6	
6	do do yellow					6	
9	do do pink					5	
1860.—ARMS.							
1	kreuzer, square, black					5	3
3	do do blue					10	4
6	do do orange					20	4
9	do do rose					30	4
1862.—ARMS.							
3	kreuzer, square, pink					10	3
6	do do blue					15	4
9	do do stone					20	4
18	do do green					30	6
30	do do orange					50	6
1864.—ARMS.							
1	kreuzer, square, black					5	3
<i>Unpaid Letter Stamps.</i>							
1	kreuzer, square, yellow					6	3
3	do do do					8	4
12	do do do					20	10
<i>Envelope Stamps.</i>							
1857.—HEAD TO RIGHT.							
3	kreuzer, oval, blue					20	6
6	do do yellow					30	6
9	do do rose					35	8
12	do do brown					40	10
18	do do red					50	15
1862.							
3	kruezer, oval, rose					8	4
6	do do blue					15	6
9	do do stone					25	8
Bahamas.							
<i>Adhesive Stamps.</i>							
1d	rect, carmine					7	5
4d	do " rose					20	8
6d	do " mauve					25	10
1s	do " green					50	20

		Unused. Used.				Unused. Used.	
		\$	Cts.	\$	Cts.	\$	Cts.
Barbadoes.				Brazil.			
<i>Adhesive Stamps.</i>				<i>Adhesive Stamps.</i>			
VALUE NOT INDICATED.				LARGE ROMAN FIGURES.			
Rect,	red	10	8	60 reis, oval	black		1 00
do	green	5	5	ITALIC FIGURES.			
do	blue	10	5	10 reis, oblong,	black	75	25
VALUE INDICATED.				30 do	do		25
6d rect,	red	20	8	60 do	do	75	25
1s do	black	50	10	90 do	do		30
1s do	purple	50	20	SMALL ROMAN FIGURES.			
Bavaria.				10 reis, oblong,	black	10	
<i>Adhesive Stamps.</i>				20 do	do	20	10
1849.—FIGURE.				30 do	do	15	8
1 kreuzer, square,	black	50	15	60 do	do	20	10
1851.—FIGURE.				99 do	do	25	10
1 kreuzer, square,	rose		5	180 do	do	35	15
3 do do	blue		3	280 do	vermillion	40	20
6 do do	marone	20	3	300 do	black		20
9 do do	green	25	3	430 do	orange		30
12 do do	red	30	4	600 do	black		25
18 do do	yellow		4	<i>Newspaper Stamps.</i>			
1862.—FIGURE.				10 reis, oblong,	blue	8	4
1 kreuzer, square,	yellow	8	3	30 do	do	8	4
3 do do	rose	5	3	Bremen.			
6 do do	blue	12	3	<i>Adhesive Stamps.</i>			
9 do do	stone	20	3	2 grote, rect,	orange	8	4
12 do do	green	25	4	3 do	blue	12	6
18 do do	red	30	4	5 do	rose	16	6
<i>Unpaid Letter Stamps.</i>				5s gr, rect,	green	20	8
3 kreuzer, square,	black	10	6	7 grote "	yellow	20	10
Belgium.				10 do	black	30	10
<i>Adhesive Stamps.</i>				<i>Envelope Stamps.</i>			
1849.—BUST.				1 groten, oval,	on white paper	6	4
10 centime, rect,	brown	1 00	15	1 do	on blue paper	6	4
20 do do	blue	1 00	10	British Columbia and Vancouver's Island.			
1850.				2½ rect,	pink	40	20
1 centime, rect,	green	3	2	New Issues, 1865.			
10 do do	brown	10	4	5 cents, rect,	rose	25	
20 do do	blue	12	2	10 do	blue	50	
40 do do	red	20	2	3 do	blue	25	
Bergedorf.				British Honduras.			
<i>Adhesive Stamps.</i>				New Issues, 1866.			
½ schilling, square,	indigo	5	3	1d rect,	blue	10	8
1 do do	white	8	5	6d do	rose	25	20
1½ do do	yellow	12	6	1s do	dark green	50	20
3 do do	rose	15	6	British Guiana.			
4 do do	light-brown	20	6	<i>Adhesive Stamps.</i>			
Bermuda.				1853.—VESSEL TO LEFT.			
1d	red	7	4	1 cent, rect,	red		
2d	blue	20	10	4 do	blue		25
6d	lilac	20	12	1860.—VESSEL TO RIGHT.			
1s	green	40	15	1 cent, rect,	rose		
				1 do	black	4	4
				2 do	orange	7	7

Price Catalogue of Postage Stamps.

		Unused. Used.				Unused. Used.	
		\$	Cts.	\$	Cts.	\$	Cts.
4 cent, rect,	blue		12		8		
8 do	rose		20		10		
12 do	lilac				10		
25 do	green				10		
1863.							
6 do	blue		20		10		
24 do	green		40		10		
48 do	rose		65		12		
<i>Newspaper Labels.</i>							
1 cent, rect,	rose				20		
2 do do	yellow				20		
4 do do	blue				25		
Brunswick.							
<i>Adhesive Stamps.</i>							
1852.							
1 silber groschen, oblong,	rose				25		
2 do do do	blue				25		
3 do do do	ver.				50		
1854.							
¼ silb groschen, oblong,	brown		6		4		
½ do do do	white		12		6		
1 do do do	orange		15		6		
2 do do do	dark-blue				6		
8 do do do	pink				6		
PRESENT ISSUE.							
4-4ths gute gr, square,	brown		16		12		
½ silb gr, oblong,	green		6		4		
1 do do	yellow		10		5		
2 do do	blue		15		6		
3 do do	rose		20		6		
<i>Envelope Stamps.</i>							
1 silb gr, oval,	yellow		10		4		
2 do do	blue		15		6		
3 do do	rose		20		6		
Buenos Ayres.							
<i>Adhesive Stamps.</i>							
HEAD.							
1 peso, oblong,	blue		40		20		
1 do do	rose		40		20		
2 do do	blue		45		20		
2 do do	rose		45		20		
4 reals do	green				25		
Canada.							
<i>Adhesive Stamps.</i>							
1856.							
¼d rect,	rose		75		25		
3d oblong,	vermillion		50		12		
6d rect,	black		1 50		1 00		
6d sterling, 7½ cy,	green		1 50		1 00		
10d rect,	blue		2 00		1 00		
12d do	black		5 00				
1860.							
1 cent, rect,	rose		2				
5 do oblong,	vermillion		7				
10 do rect	dark-brown		12				
12½ do do	green		15				
17 do do	blue		20				
1864.							
2 cent, rect,	rose					3	
<i>Envelope Stamps.</i>							
5 cents, oval	vermillion					10	5
10 do do	chocolate					20	10
Cape of Good Hope.							
<i>Adhesive Stamps.</i>							
1d triangular,	red					10	5
4d do	blue					25	7
6d do	lilac					40	7
1s do	green					50	10
WOOD BLOCK.							
1d triangular,	red						1 00
4d do	blue						1 00
Ceylon.							
<i>Adhesive Stamps.</i>							
¼d rect,	lilac					5	5
1d do	blue					8	6
2d do	green					12	6
4d oct,	rose-lake					20	10
5d rect,	red-brown					22	10
6d do	chocolate					25	10
8d oct,	marone					21	12
9 do	brown					30	18
10d rect,	red					75	20
1s do	pale violet					40	10
1s 9d oct,	green					1 00	25
2s do	blue					1 00	50
<i>Envelope Stamps.</i>							
1d oval,	blue					10	6
2d do	green					15	
4d do	pink					20	
5d oval,	brown					25	
6d circular,	chocolate					30	
8d oct,	do					40	
9d rect,	do					75	
1s circular,	yellow					1 00	
1s 9d rect,	green					1 25	
2s oct,	blue					1 50	
Chil.							
<i>Adhesive Stamps.</i>							
1 centavo, rect,	yellow					10	6
5 do do	red					20	8
10 do do	blue					30	10
20 do do	green					40	12
Costa Rica.							
<i>Adhesive Stamps.</i>							
½ real, rect,	blue					25	10
2 do	scarlet					50	10
4 do	green						25
1 peso, rect,	orange						
Danubian Principalities.							
<i>Adhesive Stamps</i>							
Moldavia.							
1864.							
54 paras, circular,	green					15	5

		Unused.		Used.				Unused.		Used.	
		\$	Cts.	\$	Cts.			\$	Cts.	\$	Cts.
81 paras, circular,	blue		25		10	Egypt.					
108 do do	pink		30		15						
	1861.					5 paras, rect,	dark green				8
40 par, rect,	blue		15		8	10 do do	brown				12
80 do do	red		20		10	20 do do	light blue				15
<i>Newspaper Stamps.</i>						1 prastre, rect,	lilac				25
5 paras, rect,	black		35		20	2 do do	orange				65
Moldo-Wallachia.						5 do do	rose			1	25
	1862.					10 do do	slate			2	50
3 paras, rect,	yellow		15		8	France.					
6 do do	rose		20		10						
30 do do	blue		30		15	<i>Adhesive Stamps.</i>					
	1865.					REPUBLIC.					
2 paras, rect,	yellow		8		5	10 centimes, rect,	cinnamon				10
5 do do	blue		20		10	15 do do	green				10
20 do do	red		30		15	20 do do	black			1	25
Denmark.						25 do do	blue			1	00
<i>Adhesive Stamps.</i>						40 do do	vermillion				12
	1852.					1 franc,	carmine				8
2 rigsbank-skil, square	blue		75		8	PRESIDENCY.					
4 do do	light-brown		8		8	10 centimes, rect,	cinnamon			1	00
4 do do	dark-brown		8		8	25 do do	blue			1	00
	1860.					EMPIRE.					
2 skillings, square,	blue		12		6	1 centimes, rect,	olive green			3	1
4 do do	brown		16		6	2 do do	marone			4	2
8 do do	green		20		8	4 do do	lavender			6	3
16 do do	lilac		25		6	5 do do	green			6	3
LAST ISSUE.						10 do do	cinnamon			8	1
4 skillings, rect,	pink		12		6	20 do do	blue			15	1
16 do do	ash		30		12	25 do do	blue			1	00
<i>Essays.</i>						40 do do	orange			20	1
HEAD OF MERCURY.						80 do do	carmine			40	1
4 R. B. S. square	brown		25			1 franc,	do			1	50
HEAD OF KING.						<i>Unpaid Letter Labels.</i>					
8 R. B. S. square	brown		25			10 centimes, square,	black			10	5
<i>Envelope Stamps.</i>						15 do do	do			12	5
2 skillings, rect,	blue		12		6	French Colonies.					
4 do do	scarlet		15		8	1 cent, square,	olive green			4	3
Duchy of Schleswig-Holstein.						5 do do	emerald green			10	5
1 skillings, rect,	blue		2 00		6	10 do do	cinnamon			15	6
2 do do	rose		2 00		6	40 do do	vermillion			30	6
	1864.					Germany.					
1½ schillings, square,	blue		12		6	NORTHERN STATES.					
4 do oval,	rose		20		8	<i>Adhesive Stamps.</i>					
1½ do do	green		10		6	1850.					
½ do do	rose		12		6	½ silb, grosch,	red-brown				3
Island of St. Thomas and St. Croix.						½ do do	flesh			10	3
3 cents, square,	red-brown		10		5	½ do do	green				3
Ecuador.						1 do do	blue				3
½ real, rect,	blue		50		35	1 do do	rose				3
1 do	yellow-brown		1 00		50	3 do do	russet			20	3
1 do	green		1 50		1.25	5 do do	lilac			25	3
						10 do do	vermillion			35	6

Price Catalogue of Postage Stamps.

		Unused.	Used.			Unused.	Used.				
		\$ Cts.	\$ Cts.			\$ Cts.	\$ Cts.				
1862.											
½ silb grosch, square,	green	5	3	Greece. <i>Adhesive Stamps.</i>							
½ do do	orange	8	3								
1 do do	rose	10	3								
2 do do	blue	12	3								
3 do do	brown	15	3								
4 do do	black	5	3								
<i>Envelope Stamps.</i>											
½ silb grosch, oval,	orange	10	5								
1 do do	rose	12	5								
2 do do	blue	18	5								
3 do do	stone	20	5								
Southern States. <i>Adhesive Stamps.</i>											
1860.											
1 kreuzer, square,	green	10	3	Grenada.							
3 do do	light blue	3	3								
3 do do	deep-blue	4	3								
6 kreuzer square,	rose	3	3								
2 do do	yellow	3	3								
1860.											
1 kreuzer, square,	blue	8	3					Hamburg. <i>Adhesive Stamps.</i>			
3 do do	do	12	3								
6 do do	rose	18	3								
9 do do	yellow	25	3								
15 do do	lilac	30	3								
30 do do	vermilion	45	4								
1862.											
3 kreuzer, square,	rose	12	3	Local Stamps.							
6 do do	blue	18	3								
9 do do	brown	25	3								
<i>Envelope Stamps.</i>											
2 kreuzer, square,	yellow	8	5								
3 do do	rose	12	5								
6 do do	blue	20	5								
9 do do	stone	25	5								
Great Britain. <i>Adhesive Stamps.</i>											
1840.											
1d rect,	black		5	Hanover. <i>Adhesive Stamps.</i>							
2d do	blue		15								
1860.											
2d rect,	blue		2								
4d do	rose		3								
6d do	lilac		2								
10d oct,	brown		12								
1s do	green		3								
PRESENT ISSUE.											
1d rect,	red	4						1851.			
2d do	blue	10	1								
3d do	pink	15	4								
4d do	vermilion	18	2								
6d do	lilac	20	1								
9d do	brown	30	6								
1s do	green	40	1								
<i>Envelope Stamps.</i>				1858.							
1d oval, without date,	pink	10	5								
2d do do	blue	15	6								
2d do with date,	do	15	6								
1d do do	pink	10	6								
3d wavy border	rose	18	8								
4d circular	vermilion	28	8								
6d oct	violet	30	10								
1s do	green	50	10								
1851.											
<i>Envelope Stamps.</i>				1859.							
1 guten groschen, oval	green	25	20								
1 silb do do	rose	25	10								
2 do do do	blue	25	10								
3 do do do	yellow	40	10								
1859.											
3 groschen, oval	yellow	30	15								
1862.											
1 groschen, oval	rose	5	3								
2 do do	blue	15	8								
3 do do	brown	20	8								
<i>Local Envelope Stamps.</i>											
BUGLE HORN.											
½ groschen, circular	green	10									

		Unused.	Used.			Unused.	Used.
		\$ Cts.	\$ Cts.			\$ Cts.	\$ Cts.
HORSE.							
$\frac{1}{2}$ groschen, circular	green	6		1864.			
Holland.				5 centimes, rect	slate-green	5	3
<i>Adhesive Stamps.</i>				10 do do	orange	10	3
1852.				15 do do	blue	10	3
5 centimes, rect	blue	15	5	30 do do	chocolate	12	3
10 do do	red	15	5	40 do do	rose	25	3
15 do do	orange	30	5	60 do do	lilac	25	3
1865.				2 lire do	scarlet	35	8
5 centimes, rect	blue	15	2	<i>Unpaid Letter Labels.</i>			
10 do do	red	15	3	10 centimes, oval	yellow	10	
15 do do	orange	30	4	<i>Newspaper Stamps.</i>			
Hong Kong.				1 centime, rect	black	5	2
1862.				2 do do	do	8	4
2 cents, rect	brown	7	3	2 do do	yellow	5	3
8 do do	lemon	25	4	2 do do	brown	5	3
12 do do	blue	30	4	1864.			
18 do do	lilac	50	12	1 centesimo, rect	green	3	1
24 do do	green	60	6	<i>Essays.</i>			
48 do do	rose	40	0	1863.			
96 do do	dark-slate	1 50	12	2 cent rect	various colors	25	
1863.				Jamaica.			
4 cents, rect	blue-green	12	5	HEAD TO LEFT.			
6 do do	mauve	20	5	1d rect	blue	7	4
30 do do	vermilion	50	8	2d do	rose	12	6
Honduras.				3d do	green	14	10
NEW ISSUE.—1865.				4d do	orange	20	5
2 reals, rect	blue	75		6d do	lilac	25	6
2 do do	rose	75		1s do	brown	40	10
India.				ARMS.			
<i>Adhesive Stamps.</i>				3d rect	blue		8
1854.				3d do	violet		8
$\frac{1}{2}$ anna, rect	red		15	Liberia.			
$\frac{1}{2}$ do do	blue		15	6 cents, rect	pink	15	15
1 do do	red		15	12 do do	blue	13	20
2 do do	green		15	24 do do	green	40	15
4 do oct	red		18	Lubeck.			
1862.				1859.			
$\frac{1}{2}$ anna, rect	blue	10	4	$\frac{1}{2}$ schilling, rect	violet	8	4
1 do do	brown	12	3	1 do do	yellow	10	5
2 do do	yellow	16	3	2 do do	brown	18	6
4 do do	black	16	3	2 $\frac{1}{2}$ do do	rose	25	8
8 do do	rose	18	3	4 do do	green	35	15
<i>Newspaper Stamps.</i>				1863.			
8 pies, oct	lilac	15	6	$\frac{1}{2}$ schilling, rect	green	5	3
<i>Envelope Stamps.</i>				1 do do	orange	8	5
$\frac{1}{2}$ anna, circular	blue	25	10	2 do do	rose	15	6
1 do do	brown	25	12	2 $\frac{1}{2}$ do do	blue	20	5
Ionian Islands.				4 do do	brown	25	8
1d rect	yellow	7		1864.			
2d do	blue	10		1 $\frac{1}{4}$ schilling, oval	red-brown	10	5
4d do	lake	15		<i>Envelope Stamps</i>			
Italy.				1863.			
1856.				$\frac{1}{2}$ schilling, rect	green	5	3
5 centimes, rect	green	8	3	1 do do	orange	10	5
10 do do	brown	15	4	2 do do	rose	17	6
20 do do	blue	12	5	2 $\frac{1}{2}$ do do	blue	22	8
40 do do	red	18	3	4 do do	brown	25	8
80 do do	yellow	25	3	Luxembourg.			
3 lire do	golden	72	10	1852.—HEAD.			
1863.				10 centimes, rect	black		10
15 centimes, rect	blue	25	4	1 silb groschen	rose		15

Price Catalogue of Postage Stamps.

9

		Unused. Used.				Unused. Used.	
		\$	Cts.	\$	Cts.	\$	Cts.
1863.—ARMS.							
1 centime, rect	buff		3				
2 do do	black		5				
4 do do	yellow		6				
10 do do	blue		10	5			
12½ do do	rose		12	6			
25 do do	marone		18	10			
30 do do	violet		20	10			
37½ do do	green		25	15			
40 do do	vermilion		30	15			
Malta.							
½d rect,	buff		4				
Mauritios.							
<i>Adhesive Stamps.</i>							
1861.							
1d rect,	brown		7	4			
2d do	blue		12	6			
4d do	rose			10			
9d do	lilac			16			
1862.							
6d rect,	purple			10			
1s do	green			18			
1864—'5.							
3d rect,	scarlet						
5s do	mauve						
6s do	green						
1s do	do						
<i>Envelope Stamps.</i>							
6d circular,	mauve		30				
9d nine-sided	purple		50				
1s oval,	yellow		60				
Mecklenburg-Schwerin							
<i>Adhesive Stamps.</i>							
¼ schilling, square	red		4	3			
3 do do	yellow		12	7			
5 do do	blue		25	8			
1864.							
<i>Envelope Stamps.</i>							
1 schilling, oval	red		15	8			
1½ do do	green		15	10			
3 do do	yellow		25	8			
5 do do	blue		30	10			
Mecklenburg-Strelitz.							
NEW ISSUE.—1864.							
½s, gr, rect	orange		5				
½ do do	green		10				
1 sch, do	mauve		15				
1s, gr, oct	rose		15				
2 do do	blue		20				
3 do do	stone		25				
1 do do envelope	rose		15				
2 do do do	blue		25				
3 do do do	brown		30				
Mexico.							
1 real, rect	yellow			25			
1 do do	green			25			
2 do do	do			25			
2 do do	pink			25			
4 do do	red on yellow			30			
8 do do	green on brown			30			
8 do do	brown			25			
1864.							
½ real, rect	brown						25
½ do do	pink					50	25
1 do do	blue						25
2 do do	yellow						25
4 do do	green						25
8 do do	pink						25
Modena.							
5 cents, rect	green					20	10
9 do B G, rect	violet						15
10 do rect	rose					30	10
15 do do	yellow					30	10
25 do do	primrose					35	12
40 do do	blue					35	12
1 lira do	white					50	20
Provisional Govern-							
ment.							
5 cents, rect	green					20	10
15 do do	chocolate					25	15
20 do do	lilac					30	15
40 do do	rose					40	15
80 do do	orange					50	15
Monte Video.							
60 centesimos, oblong	violet					30	15
80 do do	orange					40	20
100 do do	rose					50	20
120 do do	blue					65	20
180 do do	red					20	25
240 do do	red					1 30	25
INSCRIPTION DILIGENCIA.							
60 centavos, rect	blue						25
80 do do	green						30
1 real do	red						35
1864.							
6 centesimos, rect	lake					25	
8 do do	green					30	
10 do do	brown					35	
12 do do	blue					40	
Natal.							
BULT OF QUEEN.							
1d rect,	red					7	4
3d do	blue					20	6
6d do	grey					35	8
Nevis.							
1d rect,	lake					6	
4d do	rose					20	
6d do	lilac					30	12
1s do	green					50	
New Brunswick.							
1857.							
3d diamond	red					1 25	
6d do	yellow						1 00
1s do	lilac						3 50
PRESENT ISSUE.							
1 cent, oblong	brown						1
2 do rect	orange						1
5 do do	green						1
10 do do	vermilion						4
12½ do oblong	violet						5
17 do rect	black						15
Connell Essay, genuine.						12 50	
do Photograph.						25	

		Unused.	Used.			Unused.	Used.
		\$	Cts.	\$	Cts.	\$	Cts.
New Foundland.							
1d square,	brown-violet		6				
2d rect,	scarlet		12				
3d triangular,	green		16				
4d rect,	scarlet		20				
5d square,	violet		25				
6d rect,	scarlet		30				
6d do	do		35				
8d do	do		40				
1s do	do		60				
NEW ISSUE.—1866.							
2 cents, oblong	green		5				
5 do do	brown		10				
10 do rect	black		15	5			
12 do do	red		20				
13 do oblong	yellow		25				
24 do rect	blue		35				
New Grenada.							
1863.							
5 cent, rect	orange		20	10			
10 do do	blue			10			
20 do do	red						
50 do do	green						
New South Wales.							
SYDNEY VIEW.							
1d	red		50				
2d	blue		45				
3d	green		50				
LAUREATED HEAD.							
1d rect,	red		15				
2d do	blue		15				
3d do	green		15				
6d do	brown		1 00				
8d do	orange		2 00				
DIADEMED HEAD.							
1d rect,	red		6	4			
2d do	blue		10	6			
3d do	green			8			
5d large, square	brown		20				
6d do	violet		6				
8d do	orange		20				
1s do	red		12				
5s circular,	violet		2 50	50			
Registered oval,	red and blue		20				
<i>Envelope Stamps.</i>							
1d oval,	vermillion		8				
New Zealand.							
1d rect,	vermillion		7	6			
2d do	blue		10	6			
3d do	violet			25			
6d do	chocolate		6				
1s do	green		8				
Nicaragua.							
2 centavos, oblong	blue		10	10			
5 do do	black		25	15			
Norway.							
1855.							
4 skillings, rect	blue			8			
1856.							
2 skillings, rect	yellow			5			
3 do do	lilac			10			
4 do do	blue			8			
8 do do	lake			5			
1863.							
4 skillings, rect	blue						6
8 do do	rose						6
2d do do	brown						6
2 do do	yellow						5
3 do do	lilac						8
Nova Scotia.							
OLD ISSUE.							
1d square,	red-brown		70			30	
3d diamond,	blue		40			8	
6d do	green		1 00			40	
1s do	lilac					5 00	
PRESENT ISSUE.							
1 cent, rect	black			2		1	
2 do do	mauve			3		1	
5 do do	blue			7		1	
8d do do	green			10			
10 do do	red			12		3	
12d do do	black			16		5	
Oldenburg.							
ADHESIVE.							
1850.							
½ silb groschen, rect	green		25				
1-30th thaler, do	blue					8	
1-15th do do	rose					10	
1-10th do do	yellow					10	
1858.							
½ groschen, rect	green		20				
1 do do	blue		25			8	
2 do do	yellow		30			10	
3 do do	rose		35			10	
1860.							
½ groschen, rect	yellow		15				
½ do do	green		18			8	
½ do do	mauve		20				
1 do do	blue		25			10	
2 do do	red						
3 do do	yellow						
1862.							
½ groschen, oval	green		5			5	
½ do do	orange		7				
1 do do	rose		12			6	
2 do do	blue		18			6	
3 do do	brown		25			10	
<i>Envelope Stamps.</i>							
1861.							
½ groschen, oval	brown						
1 do do	blue						
2 do do	rose						
3 do do	yellow						
1862.							
½ groschen, oval	orange		10			5	
1 do do	rose		12			6	
2 do do	blue		20			6	
3 do do	brown		25			8	
Ottoman Empire.							
20 paras, rect	yellow		15			8	
1 piastre do	lilac		30			8	
2 do do	blue		40			8	
5 do do	rose		50			12	

		Unused.	Used.			Unused.	Used.		
		\$ Cts.	\$ Cts.			\$ Cts.	\$ Cts.		
1865.				2	do do	blue	30	3	
10	paras, rect	green	10	3	do do	yellow	35	3	
20	do do	yellow-brown	80	1858.--HEAD.					
1	piastre do	lilac	20	4	pfenning, rect,	green	15	8	
2	do do	blue	40	6	do do	vermillion	20	8	
5	do do	pink	60	1	sib gros, rect,	rose		2	
25	do do	red	75	2	do do	blue		2	
Parma.				3	do do	orange		2	
STATI PARMA.				EAGLE.					
5	cents, rect,	yellow	25	10	4	pfenninge, oct,	green	5	3
10	do	white		12	6	do do	vermillion	5	3
15	do	scarlet		10	3	do do	purple	5	3
25	do	brown		10	1	silber groschen, oval	rose	8	2
40	do	blue		2	do do	ble	12	3	
DUC DI PARMA.				3	do do	stone	15	2	
15	cents, rect,	red	25	<i>Envelope Stamps.</i>					
25	do	brown	35	HEAD OF KING.					
50	do	blue	45	1	silb gros, oval,	rose		5	
PROVISIONAL GOVERNMENT.				2	do do	blue		5	
5	centes, rect,	green	15	3	do do	yellow		5	
6	do	carmine	20	4	do oct,	brown		5	
9	do	blue	20	5	do do	lilac		8	
10	do	brown	15	6	do do	green		8	
20	do	blue	30	7	do do	red		8	
40	do	red	40	EAGLE.					
80	do	orange	75	1	silb gros, oval,	rose	8	4	
Peru.				15	2	do do	blue	12	4
1	dinero, square,	blue		12	3	do do	stone	15	4
1	peseta, "	red		Queensland.					
PRESENT ISSUE.				15	1d, rect,	red	7	4	
1	dinero, square,	vermillion.	20	2d	do	blue	10	4	
1	preseta "	brown	30	3d	do	brown	18	7	
Portugal.				6d	do	green	35	7	
HEAD OF QUEEN MARIA II.				1s	do	purple	60	10	
5	reis, rect,	brown	20	Romagna.					
25	do	blue	75	1/2	bai, rect,	lemon	20	10	
50	do	green	25	1	do	grey	20	10	
100	do	lilac	1 00	2	do	yellow	20	10	
KING PEDRO V, TO RIGHT.				3	do	green	30	15	
5	reis, rect,	brown	10	4	do	red	30	15	
25	do	blue	35	5	do	lilac	40	15	
25	do	rose	35	6	do	green	40	15	
50	do	green	40	8	do	rose	50	15	
100	do	lilac	50	20	do	blue	50	15	
KING LOUIS I, TO LEFT.				<i>Essays.</i>					
5	reis, rect,	brown	4	Of various amounts and colors.				50	
10	do	yellow	8	Roman States.					
25	do	rose	20	1/2	bajocchi, oval,	green	5	4	
50	do	green	30	1	do do	do	10	5	
100	do	lilac	60	2	do oblong,	do	12	6	
Prince Edward Island.				2	3	do oval,	cinnamon	12	6
1d,	rect,	orange	3	3	4	do circular,	brown	15	6
2d,	do	rose	5	4	5	do rect,	rose	15	6
3d,	do	blue	8	5	6	do oct,	pearl	20	6
6d,	do	green	15	7	7	do do	blue	25	5
9d,	do	lilac	20	8	8	do do	white	25	3
Prussia.				50	do	oblong,	blue	75	15
1850.				3	1	scudo. do	vermillion	1 25	20
1	silber groschen, rect,	lake							

Unused. Used.

Unused. Used.

		\$ Cts.	\$ Cts.			\$ Cts.	\$ Cts.		
Russia.				1851.—HEAD TO RIGHT.					
5	kopecs, rect,	iron-grey	15	4	½	new groschen, rect,	grey	6	
10	do do	brown and blue	25	4	1	do do	rose	6	
20	do do	blue and orange	30	10	2	do do	blue	6	
30	do do	rose and green	40	15	3	do do	yellow	6	
1865.				1854.—ARMS.					
1	kop, rect,	yellow	10	5	3	pfennige, rect,	green	12	
3	do	green	10	5	HEAD TO LEFT.				
5	do	violet	15	5	½	new groschen, rect,	grey	12	
<i>Envelope Stamps.</i>				1				do do	rose
6	kopecs, circular,	blue			2	do do	blue	16	
11	do do	black	30	15	3	do do	yellow	20	
21	do do	blue	40	15	5	do do	vermilion	30	
31	do do	rose	50	20	10	do do	blue	5	
Finland.				1863.—ARMS.					
5	kopecs, rects,	blue		10	1	pfennige, rect,	green	5	
10	do do	rose		10	½	new groschen, rect,	orange	5	
<i>Envelope Stamps</i>				1				do do oval,	pink
1845.				2				do do do	blue
5	kopecs, oval,	blue		20	2	do do do	blue	12	
10	do do	rose		20	3	do do do	brown	16	
1862.				5				do do do	lilac
5	kopecs, rect,	blue	25	12	<i>Envelope Stamps.</i>				
10	do do	rose	40	15	1856.—HEAD OF KING.				
Poland.				1				new gro., small oval,	rose
10	kopecs, rect,	blue and red	25		2	do do do	blue	10	
<i>Envelope Stamps.</i>				3				do do do	yellow
3	kopecs, circular,	blue	15	10	5	do do do	lilac	15	
10	do do	black	35	15	10	do do do	green	25	
Sandwich Islands.				10				do do do	green
1	cent, rect,	black	10	5	1864.—ARMS.				
1	do	blue	10	5	1	new gro., small oval,	red	3	
2	do	black	15		2	do do do	blue	10	
5	do	blue	20	8	2	do do do	brown	15	
13	do	red	50	15	5	do do do	lilac	35	
1861.				5				do do do	lilac
2	do	rose	5	10	Sierra Leone.				
1864.				5				6d, rect,	lilac
2	do	vermilion	5	10	25				
Sardinia.				Confederate States of America.					
1851.				5				5 cents, rect,	blue
5	centimes, rect,	black	50	50	5	do	green	5	
20	do do	blue	10	10	10	do do	do	10	
50	do do	red	50	50	19	do do	blue	10	
1852.				2				do do	carmine
5	do do	green	50	50	20	do do	green	10	
20	do do	blue	10	10	25	fac-simile, for		15	
40	do do	red	50	50	25				
1855.				Spain.					
5	do do	green	50	50	1850.				
20	do do	blue	10	10	6	curatos, rect,	black	15	
40	do do	red	50	50	1851.				
1855.				6				do do	black
5	do do	green	50	50	5	reals, rect,	rose	15	
20	do do	blue	10	10	1852.				
40	do do	red	50	50	6	cuartos, rect	rose	10	
Saxony.				5				reals do	green
1850.				6				cuartos, rect	red
3	pfennige, square,	red		12	3	reals do	green	2 00	
1854.				4				cuartos, rect	pink
1854.				4				cuartos, rect	pink

Price Catalogue of Postage Stamps.

13

		Unused. Used.				Unused. Used.	
		\$	Cts.	\$	Cts.	\$	Cts.
6 cuartos, rect	lake		10				
5 reals do	green		2 00				
4 cuartos, rect	carmine		10				
1 real, rect	blue		10				
2 cuartos, rect	green		6				
4 do do	rose		8				
2 reals do	chocolate		6				
2 cuartos, rect	green	20	6				
4 do do	orange	25	8				
12 do do	carmine	30	8				
19 do do	brown	40	15				
1 real do	blue	15	8				
2 do do	lilac	20	8				
2 cuartos, rect	indigo	10	6				
4 do do	brown	12	6				
12 do do	blue	20	10				
19 do do	rose	30	15				
1 real do	chocolate	15	8				
2 do do	green	25	10				
2 cuartos, rect	indigo	10	5				
4 do do	red	12	6				
12 do do	green	20	8				
19 do do	mauve	30	15				
1 real do	brown	15	8				
2 do do	blue	20	10				
2 cuartos, rect	rose	10					
4 do do	blue	10					
12 do do	red	40					
19 do do	chocolate	60					
1 real do	green	20					
2 do do	violet	30					
<i>Official Stamps.</i>							
1/2 onza, rect	yellow	15	10				
1 do do	rose	15	10				
4 do do	green	20	10				
1 libra do	blue	25	10				
1/2 onzo, oval	orange	15	8				
1 do do	rose	15	8				
4 do do	green	20	8				
1 libra do	blue	25	8				
Cuba, Hayti and Porto Rico.							
1/2 real plata, rect	blue	15	3				
1 do do	green	25	5				
2 do do	rose	50	10				
1/2 real plata, rect	chocolate		6				
1/2 do do	green	15	6				
1 do do	violet	25	6				
2 reals do	vermillion	40					
Philippine Islands.							
6 2-8 cents, rect	green	60					
3 1-8 do do	black	30					
12 4-8 do do	violet	1 20					
St. Helena.							
6d rect,	blue		40				
1d do	red		6				
4d do	carmine		25			15	
1s do	green		60				
St. Lucia.							
Rect,	red		10				
do	blue		25				
do	green		35				
St. Vincent.							
1d rect,	lake		7			6	
6d do	green		35			15	
Sweden.							
3 skilling banco, rect	green					10	
4 do do do	blue					6	
6 do do do	fawn					8	
24 do do do	red					12	
3 ore, rect	brown		8			5	
4 do	blue		8			3	
5 do	green		8			5	
9 do	lilac		12			8	
12 do	blue		15			6	
24 do	yellow		20			4	
30 do	red		25			4	
50 do	lake		40			4	
<i>Inland Labels.</i>							
Oblong,	black		15				
do	brown		6				
Switzerland.							
BASLE.							
2 1/2 raps, rect	red	1 25				50	
GENEVA.							
5 centimes, rect	green	1 30				60	
<i>Envelopes.</i>							
5 centimes rect	green	1 30				60	
VAUD.							
4 centimes, oblong	black	1 40				10	
5 do do	do	1 40				10	
ZURICH.							
4 rappen, rect	black	1 30				80	
6 do do	do	1 50				80	
WINTERTHUR.							
2 1/2 rappen, oblong	black	1 75				1 00	
GERMAN & FRENCH CANTONS.							
2 1/2 rappen (orts,) rect	black					15	
2 1/2 do (local) do	do					15	
FEDERAL.							
5 rappen, rect	blue		35			15	
10 do do	yellow		35			15	
15 do do	rose					15	
15 cents do	do					15	
1855.—FRANCO.							
2 rappen, rect	grey		15			4	
5 do do	brown		20			6	
10 do do	blue		25			3	
15 do do	rose		25			5	
20 do do	yellow		30			5	
40 do do	green		40			3	
1 franc do	grey		50			5	

		Unused.	Used.			Unused.	Used.
		\$	Cts.	\$	Cts.	\$	Cts.
1862.—HELVETIA.							
2 centimes, rect	grey	4	2				
3 do do	black	5	3				
5 do do	brown	5	3				
10 do do	blue	10	2				
20 do do	orange	15	4				
30 do do	vermilion	20	5				
40 do do	green	25	3				
60 do do	bronze	30	5				
1 franc do	gold	40	2				
Tasmania.							
1d rect,	red	7	4				
2d do	green	10	4				
4d do	blue	25	5				
6d oct,	lilac	30	12				
1s do	red	40	12				
Trinidad.							
WOOD BLOCK.							
Rect,	red	20					
PRESENT ISSUE.							
Rect,	red	10	5				
do	blue		8				
do	purple						
4d rect,	violet		10				
6d do	green		15				
1s do	black	50	15				
Tuscany.							
LION AND SHIELD.							
1 quattr, rect	black	75	10				
1 soldi do	yellow	1 00	50				
1 crazia do	marone	30	12				
2 do do	blue	35	12				
4 do do	green	40	12				
6 do do	blee	45	12				
9 do do	claret	60	12				
60 do do	red-brown	2 50	10				
SAVOY CROSS.							
1 centes, rect	violet	30					
5 do do	green	35					
10 do do	brown	40	10				
20 do do	blue	45	10				
40 do do	red	60	10				
80 do do	pink		10				
Two Sicilies.							
NAPLES.							
1857.							
½ grano, circular	lake	1 00	50				
1 do square	do	40	10				
2 do oct	do	45	10				
3 do rect	do		15				
5 do do	do	45	5				
10 do hexagonal	do	65	10				
20 do lozenge	do	80	10				
50 do oval	do	1 50	6				
1861.							
½ tomesse, rect	yellow-green	20					
½ grano do	light-brown	20					
1 do do	black	25	6				
2 do do	blue	25	6				
5 do do	rose	30	6				
10 do do	buff	30					
20 do do	yellow	40					
50 do do	grey	60					
Sicily.							
½ grano, rect	orange	75	60				
1 do do	olive-brown	80	15				
2 do do	blue	40	15				
5 do do	red	50	20				
10 do do	deep-blue	60	20				
20 do do	blue-black	75	20				
50 do do	red-brown	1 00	60				
United States.							
U. S. POST OFFICE.							
1847.							
5 cents, rect	brown	40	10				
10 do do	black	75	25				
NEW YORK POST OFFICE.							
1867.							
5 cents, large, rect	black	75	40				
1 cent, rect							
3 do do	blue	2	1				
5 do do	carmine	3	1				
10 do do	brown	8	5				
12 do do	green	10	3				
24 do do	black	12	4				
30 do do	lilac	30	6				
90 do do	orange	35	8				
90 do do	blue	1 00	35				
Full set, 8 stamps,							
1861.							
1 cent, rect	blue	2	1				
2 do do	black	2	1				
3 do do	carmine	3	1				
5 do do	brown	5	2				
10 do do	green	10	1				
12 do do	black	12	2				
24 do do	lilac	24	3				
30 do do	orange	30	4				
90 do do	blue	90	25				
Essays.							
Various colors, same designs as							
1857,							
40							
Various colors, same designs as							
1861,							
25							
Envelopes.							
1857.							
2 cents, large oval	red	6	1				
6 do do	red	25	10				
6 do do	green	25	10				
10 do do	do	15	2				
3 do small oval,	vermilion	6	1				
4 do do	blue and do	25					
6 do do	do	50					
10 do do	green	15	6				
1861.							
1 cent, oval,	blue	3	1				
2 do	black	4	1				
3 do	rose	4	1				
6 do	rose	8	3				
10 do	green	12	2				
12 do	brown and red	18					
20 do	blue and red	35					
24 do	green and red	40					
40 do	red and black	50					
Local and Express Stamps,							
In great variety, price list separate.							

Price Catalogue of Postage Stamps.

15

Unused. Used.

Unused. Used

	\$	Cts.	\$	Cts.		\$	Cts.	\$	Cts.
<i>Sanitary Fair Stamps.</i>					BUST TO LEFT, FIGURES EACH SIDE.				
Philadelphia, 3 kinds, per set	25		15		3d rect, blue	25			
New York, 1 kind, blue	8				4 do, rose	25	4		
Albany, 2 kinds, red-black	8				6 do, yellow		50		
Stamford, 1 kind, red-brown	5				6 do, black	35	5		
Springfield, 1 kind, violet	5				BUST OF QUEEN IN CIRCLE.				
Brooklyn, 1 kind, green					1s oct, blue	50	6		
Venezuela.					1863.				
1/2 real, small rect, yellow	15				2d rect, violet		5		
1 do do, purple	25				4 do, rose-lake		5		
2 do do, brown	45				2 cents, rect, rose		6		
1862.					Too late, do 6d, lilac and green				
1/2 real, large rect, green	15				Reg'd, do 1s, blue and rose		75		
1/4 do do, purple	18				1865.				
1 do do, brown	20				1d rect, green	8	4		
1864.					Wurtemberg.				
1/2 centavo, rect, rose	8				1850.				
1 do do, slate	12				1 kreuzer, square, buff	40	10		
Victoria.					1860.				
QUEEN ENTHRONED.					1863.				
2d rect, brown			15		3 do do, yellow	30	6		
HALF-LENGTH PORTRAIT OF QUEEN.					1860.				
1d rect, rose			50		6 do do, green	45	6		
2 do, ash			50		9 do do, rose	60	6		
3 do, blue			15		18 do do, neutral	75	8		
QUEEN ENTHRONED, WITH NAME.					1864.				
1d rect, green			50		1 do do, brown	15	4		
6 do, blue			10		3 do do, orange	18	4		
BUST IN OVAL.					1864.				
1d rect, green	50		6		6 do do, blue	15	4		
2 do, lilac	30		6		9 do do, red-brown	20	4		
4 do, pink	40		6		18 do do, orange	30	4		
BUST TO LEFT, WORD "POSTAGE" ON LEFT.					<i>Returned Letter Label.</i>				
6d rect, yellow	50				Square, black	40			
6 do, black	5				<i>Envelope Stamps.</i>				
2s do, green	5				3 kreuzer, oct, rose	10	6		
					6 do, blue	18	6		
					9 do, stone	30	10		

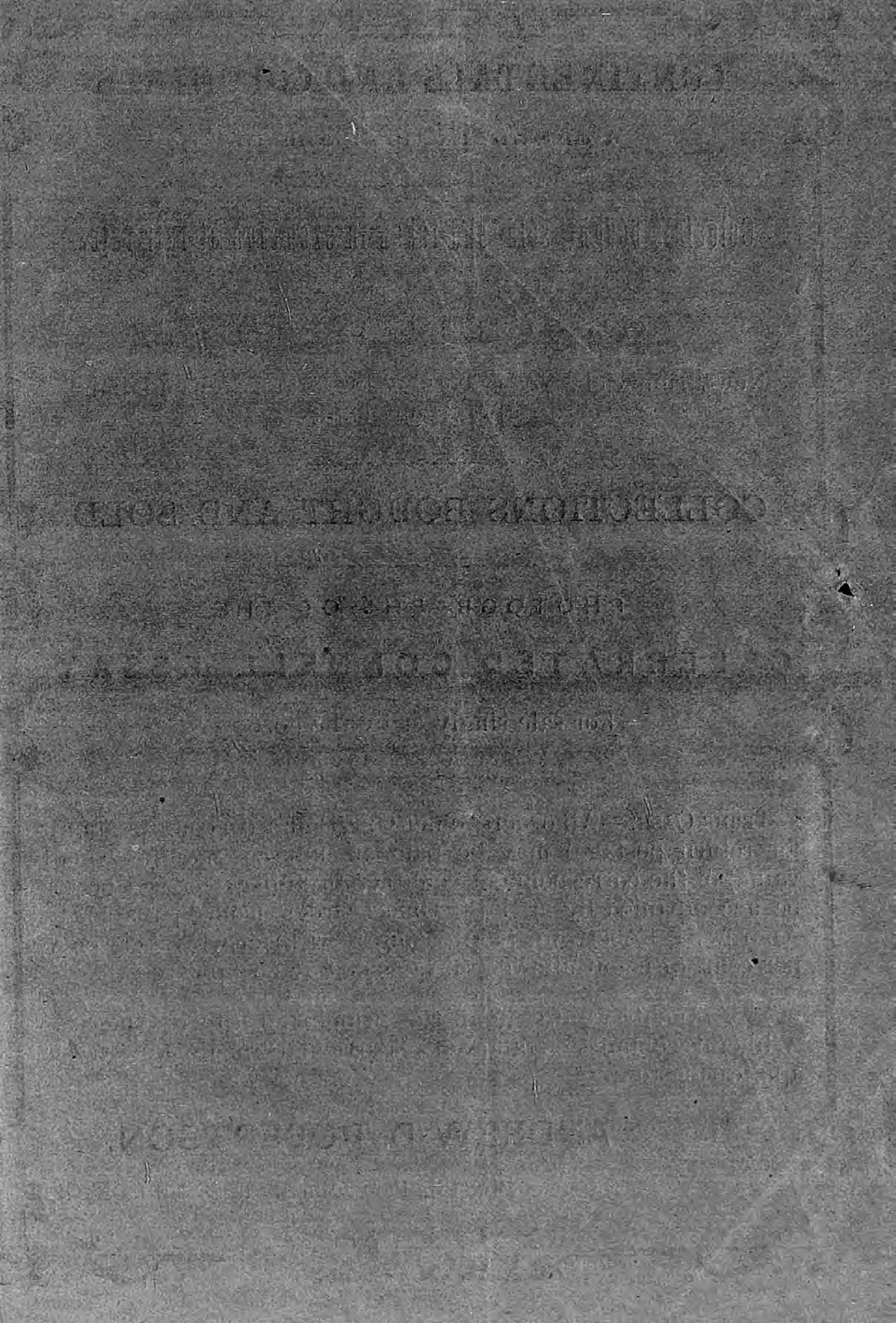
LIST OF UNEQUALLED PACKETS.

<i>Value.</i>	<i>Present Issue — used.</i>						<i>Varieties.</i>
\$0.25	Packet	contains,	25
0.60	"	"	40
1.00	"	"	60
5.00	"	"	125
<i>Present Issue—unused.</i>							
0.25	"	"	8
0.60	"	"	18
1.00	"	"	28
<i>Obsolete—used.</i>							
0.25	"	"	15
0.60	"	"	25
1.00	"	"	35
<i>Obsolete—unused.</i>							
0.25	"	"	6
0.60	"	"	10
1.00	"	"	15

Mixed Continentals — Cents per 100.

The above are (acknowledged by dealers) said to be the *cheapest* and *best* packets issued.

N. B.—Send any sum of money you wish and you will receive a Packet (state whether obsolete or present issue, used or unused) that is *warranted to give satisfaction.*



CONTINENTALS AND COLONIALS

For Sale by the Thousand.

Colonials bought, sold, and taken in exchange at fair rates.

OBSOLETE ISSUES,

New Brunswick, Nova Scotia, Canada and Newfoundland,
always on hand.

COLLECTIONS BOUGHT AND SOLD.

PHOTOGRAPHS OF THE CELEBRATED CONNELL ESSAY,

For sale singly or by the dozen.

TERMS CASH.—All orders under One Dollar (to contain stamp for return postage) may be paid in unused Stamps (small value) of the correspondent country, anything over had better be accompanied by a Post Office Order made payable to Andrew D. Robertson, Saint John, New Brunswick. Twenty per cent. discount allowed on sales of \$5 and upwards.

W Agents wanted in all the principal Cities in America. A liberal commission allowed. Particulars made known on application to

ANDREW D. ROBERTSON,

Box 23, Post Office, Saint John, N. B.