

**1908.**

PRICE,

**1/-** Nett.

The

**Stamp  
Collectors'  
Annual**

And YEAR-BOOK of PHILATELY.

London:

**CHAS. NISSEN & CO.,**

7 Southampton Row,  
W.C.

Edited by

**PERCY C. BISHOP**  
and **CHAS. NISSEN.**

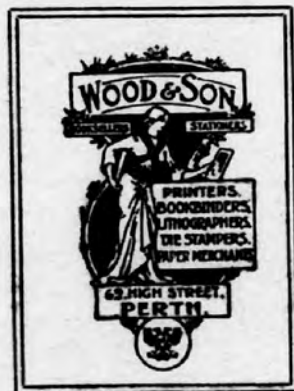
**FIFTH YEAR  
OF PUBLICATION.**

# PRINTING!

---

---

**O**UR PLANT IS THE MOST  
MODERN, AND SPECIALLY  
ADAPTED FOR PHILATELIC WORK.

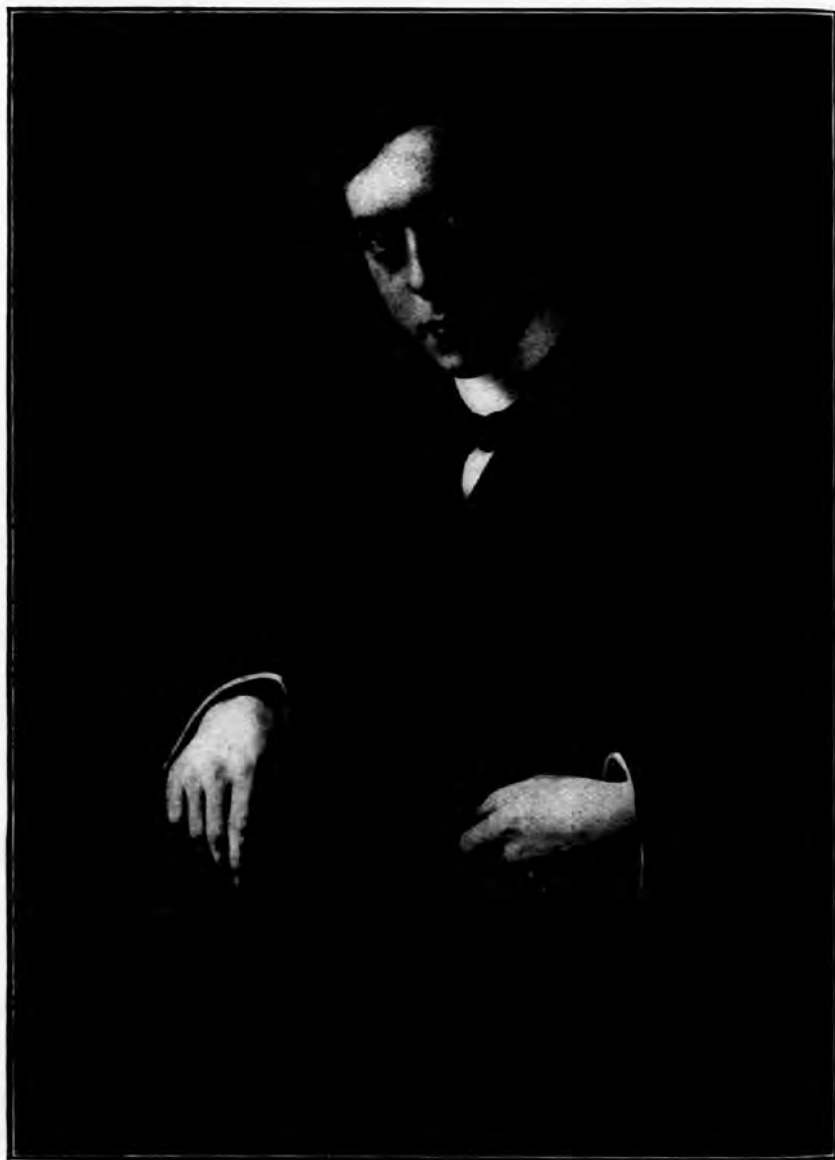


**W**E Print for all the Leading  
Philatelists. . . . .  
Let us **PRINT** for you.

▼

**WOOD & SON,**  
**62 HIGH STREET, PERTH.**  
Works: 8 MILL STREET.





*Copyright.]*

**FRED. J. MELVILLE,**

President of the Junior Philatelic Society which is organising the great Exhibition of the Stamps of the British Colonies, in Caxton Hall, Westminster, on March 12th, 13th, and 14th, 1908.

Cat'd with Gen. 855 (4)

..... THE .....

# STAMP COLLECTORS' ANNUAL,

1908.



A YEAR-BOOK OF PHILATELY

EDITED BY

PERCY C. BISHOP and CHAS. NISSEN.



COPYRIGHT :

ENTERED AT STATIONERS' HALL.

London :

CHAS. NISSEN & CO., 7 SOUTHAMPTON ROW, W.C.

# L. S. CHARLICK,

20 CRICKLADE AVENUE,

STREATHAM HILL,

LONDON, S.W.,

WHOLESALE and RETAIL DEALER in

# FOREIGN and COLONIAL STAMPS. ❁

---

**WHOLESALE LIST**, 16-20 pages, published quarterly—*for Dealers only.*

**RETAIL LIST** of Sets, Packets, and Single Stamps—post free.

**WANTED TO BUY.** Used Colonial Stamps in any quantity.

**SPECIALITY**—Used and Unused Australians in all varieties of shade, Watermark and Perforation, Blocks of Four, Curiosities, Errors, &c., &c.

Send Want Lists.

## P R E F A C E.

---

**W**ITH this issue "The Stamp Collectors' Annual" enters upon its fifth year of life, and yet it scarcely seems the half of that time since the "Stamp Collectors' Annual" was first published.

It is often of importance to a collector to be able to inform himself as near as possible of the current value, so to speak, of any rare stamps he may have (which are not always priced in Dealers' Catalogues), its value, and with such an object in view we have compiled a list of some of the principal prices realised at London Philatelic Auction Rooms during the past year.

In giving the new issues of the year in the present "Annual" we have tried to make the list of postage stamps as accurate as possible, down to the end of December.

We have to thank readers and friends, both at home and abroad, who have rendered cordial and valuable assistance in the form of advice and suggestions, and we also thank the philatelic press.

*December, 1907.*

# Messrs. PUTTICK & SIMPSON,

Literary, Fine Art, and  
PHILATELIC AUCTIONEERS,

47 Leicester Square, London, W.C.,

MAKE THE SALE OF

## RARE POSTAGE STAMPS

A SPECIALITY.

### DATES OF SALES FOR 1908.

January 14 and 15, 28 and 29; February 11 and 12, 25 and 26; March 10 and 11, 24 and 25; April 7 and 8; May 5 and 6, 19 and 20; June 2 and 3; September 29 and 30; October 13 and 14, 27 and 28; November 10 and 11, 24 and 25; December 8 and 9.

Ⓢ WING to the very large number of commissions received from the Continent and America, the Catalogues are issued, when possible, one month or more before the date of sale. Owners wishing to include Stamps should therefore forward them as early as possible.

Messrs. PUTTICK & SIMPSON'S Sales are attended by the majority of the leading Collectors and Dealers, and are the best medium for disposing of COLLECTIONS AND SINGLE RARITIES, many record prices for fine Stamps having been obtained during past seasons.

The greatest care is taken in preparing the Catalogues, in order that Country and Foreign Buyers who send bids may rely upon the condition, &c., of the various lots being accurately described.

*LIBERAL ADVANCES MADE PENDING REALIZATION IF DESIRED.*

FOR TERMS AND FULL PARTICULARS, ADDRESS

## Messrs. PUTTICK & SIMPSON,

47 LEICESTER SQUARE, LONDON, W.C.

Established 1794.

Telephone 1561 Gerrard.



## CONTENTS.

---

	PAGE.
The Imperial Stamp Exhibition, ... ..	9
The Early History of the Post, ... ..	11
The New Issues of 1907: A Complete List of Postage Stamps Issued, ... ..	14
Stamp Perforating Machines at Somerset House, ... ..	45
Philatelic Auction Summary: A Guide of the Principal Prices realised at Auction, ... ..	48
Post Cards, by "Reply Paid," ... ..	55
British Stamps Used Abroad: A Complete List of Postmarks employed in the Colonies and Abroad, ... ..	58
The Adhesive Revenue Stamps of United Kingdom: Issued since the Reign of King Edward VII., ... ..	63
British Stamps on Blue Paper: From the Original Manuscript by T. Peacock, ... ..	71
King Edward Marginal Control Letters of Great Britain: A Reference List and Guide to Values, ... ..	72
The Philatelic Literary Index for 1907, ... ..	74
Philatelic Societies and Exchange Clubs: A Directory and Guide. British Societies; British Exchange Clubs; British Colonial Societies; American Societies, ... ..	86

# P. L. PEMBERTON & Co.,

**84 HIGH HOLBORN,**

**LONDON, W.C.**

---

## **Special Offer!**

### **TRIANGULAR CAPES.**

	S.	D.
1d. red, ... ..	5	0
4d. blue, ... ..	1	9
6d. lilac, ... ..	8	0
1/- green, ... ..	10	6

Or the Set of Five, 25/-.

The above are our Selling Prices for these Stamps. We also want to buy good copies, and offer to pay the above prices less 25 per cent.

---

### **LINE ENGRAVED STAMPS,**

of which the above are among the best known examples, are our Speciality.

Write for our Complete Price List of Line Engraved Stamps, printed from Plates made by Messrs. PERKINS, BACON & CO.

---

### **The Philatelic Journal of Great Britain.**

A Popular Illustrated Monthly Magazine. 2/6 per annum, post free to any part of the world. Specimen Copy free.

---

**P. L. PEMBERTON & CO.,**

**84 HIGH HOLBORN, LONDON, W.C.**

*Telephone—6647 Central.*

## INDEX TO ADVERTISERS.

---

	PAGE.
Bernstein, I. J., ... ..	102
Bluett, E., ... ..	100
"Captain," The, ... ..	99
Charlick, L. S., ... ..	2
Ginn, F. R., ... ..	108
Glendining & Co., ... ..	103
Kohl, P., ... ..	107
Loverius, George, ... ..	107
May, L., & Co., ... ..	102
Nissen, Chas., & Co., ... ..	Cover IV.
Do. do. ... ..	105
Do. do. ... ..	106
Peckitt, W. H., ... ..	8
Pemberton, P. L., & Co., ... ..	6
Plumridge & Co., ... ..	Cover III.
Puttick & Simpson, ... ..	4
"Stamp Collectors' Annual," ... ..	100
"Stamp Collectors' Fortnightly," ... ..	101
Ventom, Bull, & Cooper, ... ..	104
Wood & Son, ... ..	Cover II.



**Rare** \_\_\_\_\_  
**Single Stamps**  
**and Collections**

**BOUGHT FOR CASH.**

**A LARGE SELECTION  
OF STAMPS ALWAYS  
ON VIEW, RANGING  
FROM THE GREATEST  
RARITIES TO THE  
MOST RECENT NEW  
ISSUES. . . . .**

**Collections and  
Stock Books**

*of Separate Countries  
sent on Approval.*

**New Issue Supply**

*A SPECIALITY.*

**Price List of Sets,  
Packets, &c., \_\_\_\_\_**

*POST FREE. . .*

**W. H. PECKITT, \_\_\_\_\_**

**Telegrams : "PECKITT, LONDON."  
Telephone 3024 GERRARD.**

**47 STRAND,  
LONDON, W.C.**

## The Imperial Stamp Exhibition, 1908.

**N**o more appropriate frontispiece could have been chosen for this year's "Annual" than the portrait of the President of the Junior Philatelic Society, as the forthcoming Exhibition to be held under the auspices of this rapidly growing organisation will certainly be the event of 1908 for the stamp collector.

It is three years since the Junior Philatelic Society created quite a sensation with its Exhibition of the Stamps of Great Britain, in Exeter Hall, London. At that time there was an enthusiasm displayed which was unique in the history of stamp collecting. The vigour and enterprise of the juniors, who had talked about the Exhibition for months, became contagious and rapidly spread to the seniors and the general public. The extraordinary number of 11,000 people visited the Exhibition during the two days it was open, and from start to finish Exeter Hall was uncomfortably crowded with visitors of all ages, representing every phase of philatelic interest.

The display was essentially a missionary enterprise, with the object of introducing the general public to the pleasures of stamp collecting. To do this effectually it had to be arranged on a popular plan, and the organisers made the daring experiment of doing away with "gate money" in any form whatever. Admission was entirely free, a talented orchestra introduced a little gaiety into the atmosphere, guides were provided to explain to visitors some of the details of stamp collecting, and lantern lectures were given each evening to huge audiences on subjects bearing on philately. All these novel features were very warmly appreciated by everybody.

The phenomenal success of the Exhibition, and the universally expressed desire of collectors and members of the stamp trade that another should be held by the Society on an even larger scale, will culminate in the event to which stamp collectors in London and the provinces are looking forward with the greatest possible interest. We refer, of course, to the Exhibition of Stamps of the British Empire to be held at Caxton Hall, Westminster, on March 12th, 13th, and 14th, 1908.

In this respect the organisers have again shown their knowledge of the public taste by devoting the main body of the Exhibition to British Colonies.

We all "think Imperially" now, and the widespread and general interest taken in everything connected with the Empire will be an important factor in attracting the attention of John Bull and his friends.

The Exhibition will be very extensive, covering over 9000 square feet of space, and including two large halls and several suites of rooms. In the first large hall the display of the British Colonies will be shown in slanting frames, and part of the second hall will also be appropriated for this purpose. The balcony of the first hall will be used as a promenade and tea gallery on which refreshments will be served at popular prices, while Mr. Leonard Wright's orchestra will perform selections. In another small hall and the remaining suites of rooms, which have been taken by the Exhibition Committee, the exhibits of various Governments will be seen to advantage.

Caxton Hall is a well-known public building immediately behind the Hotel Windsor in Victoria Street, and nearly opposite the Army and Navy Stores. The nearest stations are Victoria (London, Brighton, and South Eastern and Chatham Railways), St. James's Park, and Westminster (District Railway), Charing Cross (South Eastern and Chatham), and the various Tubes.

The Exhibition is to be opened at 4.0 on the afternoon of March 12th by the Right Hon. Sydney Buxton, M.P., Postmaster-General, and will remain open until 10 p.m., opening again on Friday, March 13th, from 10 a.m. to 10 p.m., and on Saturday, March 14th, from 10 a.m. to 9 p.m.

Admission will be free by ticket. Any number of these may be had on application to the Hon. Secretary, Mr. H. F. Johnson, at the offices of the Stamp Exhibition, 44 Fleet Street, London, E.C.

## The Early History of the Post.

---

The establishment of runners for the purpose of conveying letters of state was originated in the East long before the Christian Era.

\* \* \*

It is from the Latin word *positus* (a fixed place) that our word post is derived.

\* \* \*

The earliest mention of the "post" in the Bible, is in 2 Chronicles, xxx., when Hezekiah wrote letters to all Israel and Judah to keep the Passover.

\* \* \*

The earliest mention of letters in the Bible is in Sam. xi. 14. David wrote a letter to Joab.

\* \* \*

The Post was first organised in Europe by Charlemagne in 807.

\* \* \*

The first Letter Post was established in the Hanse town in the thirteenth century.

\* \* \*

A line of Letter Posts, connecting Austria with Lombardy, followed in the reign of the Emperor Maximilian.

\* \* \*

In 1481, Edward the Fourth, then at war with Scotland, established a system of relays of horses from York to Edinburgh, the post stations being 20 miles apart, so that despatches were conveyed 200 miles in three days.

\* \* \*

In 1514 the Flemings established a Post of their own between London and the Continent.

In 1603 each Post Office was directed to keep three horses expressly for the conveyance of Government letters.

\* \* \*

The year 1653 is memorable as the date of the first establishment of a regular, though limited, system of internal postage.

\* \* \*

In 1649, the Corporation of London started an Inland Post in opposition to that of Parliament, but it was soon afterwards suppressed by the Council of State.

\* \* \*

In 1683 a Penny Post for London and its suburbs was first started by a Mr. Murray, an upholsterer, and ultimately handed over to a William Docwray.

\* \* \*

In 1708 a Mr. Povey established a Foot Post, called the "Half-penny Carriage," for the conveyance of letters in London for a half-penny. The authorities soon compelled him to desist.

\* \* \*

Stage coaches were first used early in the seventeenth century.

\* \* \*

It was an annual custom for the mail coaches to go in procession from Millbank to Lombard Street on the King's Birthday.

\* \* \*

Postmarks impressed on letters were first used for country in 1714.

\* \* \*

The privilege of franking letters by knights, etc., began 1735.

\* \* \*

In 1793, when war broke out with France, it was arranged that when mails arrived on Saturday evening, the letter should be delivered at the window, to callers at the Chief Office, on unday.



In 1795 the privilege was first granted to sailors and soldiers of sending letters from any part of British dominions for one penny each.

\* \* \*

In 1799 an act was passed authorising the Postmaster General to send bags of letters by any private ships, such letters being subjected to half the packet rates. This is the origin of the ship-letter system, under which, besides the postal communication by regular packets, letters were conveyed to every part of the world visited by private ships.

\* \* \*

In 1801 London Penny Postage became a Twopenny Post.

\* \* \*

Previous to the year 1811 no undeliverable letters were returned to sender.

\* \* \*

No letters were despatched or postmarked on the 30th January, 1820, being the day King George III. died.

\* \* \*

In 1838 Travelling Post Office was first introduced.

\* \* \*

In 1855 the first Pillar Post Box was erected at the corner of Farringdon Street and Fleet Street, London.



# The New Issues of the Year 1907.

## A COMPLETE LIST.

COMPILED BY CHAS. NISSEN.



THE following is a complete list of Postage Stamps, including varieties of perforation, watermarks, overprints, paper, and colours that have been issued during the year 1907, the total numbering 899 different, viz. :—269 British Empire, and 630 Foreign Countries.

## BRITISH EMPIRE.

### Antigua.

Design of 1903. Wmk. Crown C.C., chalky paper.  
 $\frac{1}{2}$ d black and green.  
 $2\frac{1}{2}$ d ,, ultramarine.  
 5/- grey-green and violet.

### Australian Commonwealth.

Design of 1902. Wmk. Crown A., perf.,  $11\frac{1}{2}$ ,  $12 \times 11$ .  
 $\frac{1}{2}$ d emerald green.

4d  
 Wmk. Crown and Double Lined A.  
 $\frac{1}{2}$ d emerald green, perf. 11.  
 1d       "       "       "        $11\frac{1}{2} \times 11$ .  
 2d       "       "       "       "  
 4d       "       "       "       "  
 6d       "       "       "       "

### Bahamas.

Design of 1902. Wmk. Crown C.A. Multiple, ordinary paper.  
 $2\frac{1}{2}$ d ultramarine.

### Barbados.

Nelson type of 1906. Wmk. Crown C.A. Multiple, ordinary paper, perf.  
 $\frac{1}{2}$ d black and grey.  
 2d       "       yellow.  
 $2\frac{1}{2}$ d   "       ultramarine

Design of 1892, overprinted in four lines. Kingston Relief  
 Fund, 1d in vermilion.

1d on 2d.  
 1d on 2d, double overprint.  
 1d on 2d, inverted, "  
 1d on 2d, " double, overprint.

There are also other varieties, such as level and without stops.

**British Central Africa.**

- Design 1903. Wmk. Crown C.A. Multiple, chalky paper.  
 1d grey and carmine.  
 6d grey and buff.

**British Guiana.**

- Design of 1889. Wmk. Crown C.A. Multiple, ordinary paper.  
 2c rose.  
 4c brown and violet.  
 5c blue.  
 6c grey-black.  
 12c orange and lilac.  
 Same wmk., chalky paper.  
 48c black-brown and lilac.  
 60c green and carmine.  
 72c lilac and brown-orange.  
 96c

**British Honduras.**

- Design of 1902. Wmk. Crown C.A. Multiple, chalky paper.  
 1c green.  
 10c lilac and green.  
 25c lilac and orange-brown.  
 50c grey-green and carmine.  
 \$1    "       red.  
 \$2    "       blue.  
 \$5    "       black.

**Brunel.**

Wmk. Multiple Crown C.A., perf.

- 1c green and black.  
 2c vermilion    "  
 3c chocolate    "  
 4c mauve       "  
 5c blue         "  
 8c orange       "  
 10c green       "  
 25c brown and blue.  
 30c black and violet.  
 50c brown and green.  
 \$1 slate and vermilion.

**British Solomon Islands.**

No wmk., perf. 11.  
 $\frac{1}{2}$ d ultramarine.  
 1d rose-carmine.  
 2d blue.  
 $2\frac{1}{2}$ d yellow-orange.  
 5d green.  
 6d brown.  
 1/- lilac.

**Cayman Islands.**

Design of 1901. Wmk. Crown C.A. Multiple, ordinary paper.  
 4d brown and blue.  
 6d olive and rose.  
 1/- violet and green.  
 5/- vermilion and green.  
 Provisional Issue overprinted.  
 $\frac{1}{2}$ d on 1d carmine.  
 $\frac{1}{2}$ d on 5/- vermilion and green.  
 $\frac{1}{2}$ d on 5/- ,,  
 Same wmk., chalky paper.  
 6d olive and rose.  
 1/- violet and green.

**Cyprus.**

Design of 1903. Wmk. Multiple Crown C.A., ordinary paper.  
 10 paras, yellow and green.  
 30 ,, mauve and green.

**Dominica.**

Design of 1903. Wmk. Crown C.A. Multiple, ordinary paper.  
 $\frac{1}{2}$ d green.  
 Chalky paper.  
 $\frac{1}{2}$ d green.  
 1d black and carmine.  
 2d green and brown.  
 $2\frac{1}{2}$ d black and ultramarine.  
 3d mauve and black.  
 1/- magenta and green.

**East Africa and Uganda Protectorate.**

Design of 1903. Wmk. Crown C.A. Multiple, chalky paper.

- 1r green.
- 3r black and green.
- 4r green and black.
- 5r carmine and black.
- 10r black and ultramarine.
- 20r grey and grey-black.

Ordinary paper, same wmk. New Currency.

- 3c grey-green.
- 6c carmine.
- 10c olive and lilac.
- 12c mauve and lilac.
- 15c ultramarine.
- 25c black and green.
- 50c brown and green.

**Fiji.**

Design of 1903. Wmk. Crown C.A. Multiple, chalky paper.

- 1d vermilion.

**Gibraltar.**

Design of 1903. Wmk. Crown C.A. Multiple, ordinary paper.

- 2½d blue.
- ( chalky paper.
- 1d carmine.
- 2d green and carmine.
- 2½d lilac, black on blue.
- 2/- green and blue.

**Gold Coast.**

Design of 1902. Wmk. Crown C.A. Multiple, ordinary paper.

- ½d blue and green.
- ¾d green.
- 1d carmine.
- 2½d ultramarine.
- 6d lilac and violet.

**Grenada.**

Design of 1902. Wmk. Crown C.A. Multiple, chalky paper.

- 3d lilac and orange.
- 2/- green and carmine.

Postage due. Ordinary paper.

- 2d black.
- 3d black.

**Gwallor States.**

On India Postage and Revenue.

- ½d green.

**Hong-Kong.**

Design of 1902. Wmk. Crown C.A. Multiple, ordinary paper.

- 4c rose.
- 10c blue.

**Jamaica.**

Wmk. Crown C.A. Multiple, ordinary paper.  
Queenshead.

6d orange.

1/- brown.

Arms Type.

$\frac{1}{2}$ d green.

1d carmine.

$2\frac{1}{2}$ d blue and black.

**Leeward Islands.**

Design of 1902. Wmk. Crown C.A. Multiple, ordinary paper.

$\frac{1}{2}$ d green.

1d carmine.

$2\frac{1}{2}$ d ultramarine.

**Levant.**

Overprinted on British Stamps. Chalky paper.

4 pias on 10d.

**Federated Malay States.**

Wmk. Multiple Crown C.A., upright, ordinary paper.

5c green and carmine.

8c black and ultramarine.

Chalky paper.

1c green.

20c lilac and black.

**Malta.**

Design of 1904. Wmk. Crown C.A. Multiple, ordinary paper.

1d carmine.

**Mauritius.**

Arms design of 1895. Wmk. Crown C.A. Multiple, chalky paper.

1c black and grey.

6c lilac and red on red.

15c black and blue on blue.

1r grey and carmine.

**Montserrat.**

Design of 1903. Wmk. Crown C.A. Multiple.

$2\frac{1}{2}$ d grey and ultramarine.

Chalky paper.

1d black and carmine.

5/- carmine and black.

**Morocco Agencies.**

British Stamps overprinted Morocco Agencies in two lines at top of each stamp, and a new value in Spanish currency at the bottom in centimos and pesetaes. The overprint is in black on all the values.

5c on  $\frac{1}{2}$ d pale green.

10c on 1d scarlet.

15c on  $1\frac{1}{2}$ d purple and green.

20c on 2d green and scarlet.

30c on 3d brown on yellow.  
 40c on 4d green and brown.  
 50c on 5d purple and ultramarine.  
 1p on 10d purple and scarlet.  
 3p on 2/6 lilac.  
 6p on 5/- carmine.  
 10p on 10/- ultramarine.

**The English Currency.**

½d pale green.  
 1d scarlet.  
 2d green and scarlet.  
 4d green and brown.  
 6d purple.  
 1/- green and carmine.  
 2/6 purple.

**Nepal State.**

Design bearing a picture of the God Siva, the "Supreme God" of the Hindu caste, perf., 13½.

2 pice brown.  
 4 ,, green.  
 8 ,, carmine.  
 16 ,, purple.

**New South Wales.**

Wmk. Crown and double line A, perf., 11, 12 × 11½.

½d blue green.  
 1d carmine.  
 2d ultramarine.  
 2½d deep blue.  
 4d red brown.  
 6d yellow.  
 8d magenta.  
 10d lilac.  
 1/- purple.  
 2/6 green.

Variety.

No wmk.

2d ultramarine.

Wmk. Crown A, perf., 11.

5/- bright blue.

**New Zealand.**

Overprinted Official on current issue.

½d green.  
 1d red.  
 2d mauve.  
 3d brown.  
 6d rose.  
 1/- red.  
 2/- green.  
 5/- carmine.

Postage due.

Wmk. N.Z. and Star, perf., 14.

1d red and green.

2d ,, ,,

**Northern Nigeria.**

Design of 1902. Wmk. Crown C.A. Multiple, chalky paper.  
 ½d purple and green.  
 1d purple and carmine.  
 6d violet and lilac.  
 1/- green and black.

**Orange River.**

Design of 1903. Wmk. Crown C.A. Multiple, ordinary paper.  
 ½d yellow green.  
 4d scarlet and sage green.

**Papua.**

Stamps of British New Guinea overprinted "Papua."

½d black and yellow green.  
 1d ,, lake.  
 2d ,, violet.  
 2½d ,, ultramarine.  
 4d ,, sepia.  
 6d ,, myrtle green.  
 1/- ,, orange.  
 2/6 ,, brown.

Overprinted in smaller.

½d black and yellow green.  
 1d ,, lake.  
 4d ,, sepia.  
 6d ,, green.  
 1/- ,, orange.  
 2/6 ,, brown.

**Queensland.**

Wmk. Crown and A., perf., 12½, 13.  
 2/6 vermilion.  
 10/- deep brown.

**St. Kitts-Nevis.**

Wmk. Crown C.A. Multiple, ordinary paper.  
 2½d ultramarine.

**St. Vincent.**

Wmk. Crown C.A. Multiple, ordinary paper.  
 ½d green.  
 1d carmine.  
 2½d blue.  
 3d violet.



**Sierra Leone.**

Design of 1903. Wmk. Crown C.A. Multiple, ordinary paper.  
 ½d green.  
 1d carmine.  
 2½d blue.

**South Australia.**

Design of 1904. Wmk. Crown S.A.  
 10/- green.  
 Wmk. Crown A., perf., 12 × 11½.  
 ½d green.  
 Perf., 12.  
 3d olive green.  
 4d orange red.  
 6d green.  
 9d lake.  
 10d buff.  
 1/- brown.  
 2/6 mauve.  
 10/- deep green.

**Southern Nigeria.**

Design of 1903. Wmk. Crown C.A. Multiple, chalky paper.  
 ½d green.  
 1d rose.  
 2½d ultramarine.  
 3d lilac brown and orange.  
 1/- green and black.

**Straits Settlements.**

Design of 1902. Wmk. Crown C.A. Multiple, ordinary paper.  
 4c rose.  
 5c lilac.  
 Chalky paper.  
 5c lilac.  
 Overprinted on Labuan Stamps 1902 issue, in two lines.  
 In red.  
 1c violet and black.  
 2c green    ,,  
 3c brown    ,,  
 4c on 12 yellow and black.  
 4c on 18 brown    ,,  
 8c vermilion    ,,  
 10c slate and brown.  
 25c green blue and deep green.  
 50c lilac and purple.  
 \$1 orange and brown.  
 Same overprinted in black.  
 4c on 18c brown and black.  
 N.B.—The overprint in 10c is in one line.

**Tasmania,**

Current design.

Wmk. Crown and double lined A.

1d rose red perf.,  $12\frac{1}{2} \times 11$ .1d ,, ,,  $12\frac{1}{2} \times 12$ .

2d purple.

4d orange brown ,, 11.

4d ,, ,,  $12\frac{1}{2}$ .

8d purple brown ,, 11.

9d blue, ,, 11.

9d ,, ,,  $12\frac{1}{2}$ .1/- green and rose ,,  $12\frac{1}{2}$ .1/- ,, ,,  $12\frac{1}{2} \times 11$ .

Wmk. Crown A.

8d purple brown ,,  $12\frac{1}{2}$ .

8d ,, ,, 11.

**Transvaal.**

1902 design. Wmk. Crown C.A. Multiple, ordinary paper

 $\frac{1}{2}$ d deep green.

10/- black and purple on red.

Postage due.

 $\frac{1}{2}$ d bluish green and black.

1d scarlet ,,

2d orange.

3d pale blue and black.

5d violet ,,

6d brown ,,

1/- black and carmine.

**Trinidad.**

Wmk. Single Crown C.A., chalky paper.

5/- lilac and mauve.

Wmk. Crown C.A. Multiple, chalky paper.

1/- lilac.

5/- lilac and mauve.

£1 green and carmine.

Wmk. Crown C.A. Multiple, ordinary paper.

1d carmine.

Postage due.

4d blue black.

5d ,,

8d ,,

1/- ,,

**Victoria.**

Current design. Wmk. Crown double A.

3d orange brown, perf., 11.

1/- orange ,, 11.

5/- blue and carmine, ,, 11.

£1 rose ,, 11.

£1 ,, ,,  $12\frac{1}{2}$ .

£2 blue.

Postage due.

2d brown and blue.

**Western Australia.**

Wmk. Crown and double A.

4d red brown, perf., 11.

4d " " 12½.

9d orange " 12½.

5/- green " 12½.

New design.

Wmk. Crown W.A., perf., 14.

2½d blue.

6d violet.

1/- green.

**FOREIGN COUNTRIES.****Abyssinia.**

ደ-ገግግግ = ☆ 1/4 ☆ \* L \*

1

2

3

Design of 1894. Perf., 14 by 13½ overprinted with type 1, and with value as type 2, or in violet, type 3.

½g green.

½g red.

1g blue.

2g brown.

4g claret.

8g lilac.

16g black.

Postage Due Stamps. Overprinted as in 1904 issue, and with types 2 and 3.

½g green.

½g red.

1g blue.

2g brown.

4g claret.

8g lilac.

16g black.

**Afghanistan.**

Imperf. Type 4.

1a blue-green.

- 1a bright blue.  
 2a deep blue.  
 Zigzag rouletta.  
 1a blue-green.

**Argentine Republic.**

Designs of 1899, in new colour.  
 3c blue-green.

**Austria.**

Design of 1902. Perf., 12½, 13. Figures of value. Printed in same colour instead of black, without shiny bars.

- 6h orange.  
 12h purple.  
 72h rose.

**Belgium.**

Design of 1893. Perf., 14.  
 1c slate-grey.  
 2c dull-claret.  
 5c yellow-green.

**Brazil.**

Portrait Design, belonging to the 1906 series. Printed by the American Bank Note Co., New York.

- 500 reis purple (Campos Lake).  
 1000 „ vermilion (Liberty).  
 2000 „ yellow-green (Liberty).  
 5000 „ rose (Liberty).

*Official Stamps.*

Portrait of Alfonso Penna, bi-coloured, the frame being in orange and the centre in light green. 10 and 200 reis were issued early in 1906.

- 20 reis, green and orange.  
 50 „ „ „  
 100 „ „ „  
 200 „ „ „  
 400 „ „ „  
 500 „ „ „  
 700 „ „ „  
 1000 „ „ „  
 2000 „ „ „  
 5000 „ „ „  
 10,000 „ „ „

**Bulgaria.**

Commemorative issue of the 20th anniversary of Prince Ferdinand's accession to the throne. Perf., 11½.

- 5 stot deep green.  
 10 „ „ pink brown.  
 25 „ „ blue.  
 Imperf.  
 25 stot.  
 Imperf., 11½.  
 25 stot.

**Chili.**

Issue of 1904-5. Overprinted Official in black.

- 1c green.
- 3c on 1p brown.
- 5c blue.
- 10c black and grey.
- 15c „ purple.
- 20c „ orange-brown.
- 50c „ blue.
- 1p grey-black and brown.

**China.**

Issue of 1898-1904. No wmk., Perf., 14 to 16.

- 2c scarlet.
- 16c olive-green.
- 20c brown-lake.
- 30c rose-red.
- 50c green.
- 1 dollar carmine and salmon.
- 2 „ „ yellow.
- 5 „ green and salmon.

**Costa Rica.**

A new design of ten values ; from 1 centimo to 2 colones, with portraits as described, centre in first colour. Perf., 13½ to 15.

- 1c indigo and chestnut brown (Juan Santa Maria).
- 2c black and yellow green (Juan Mora F.)
- 4c indigo and carm.-red on toned (José M. Canas).
- 5c indigo and orange buff (Mauro Fernandez).
- 10c black and blue (Braulio Carrillo).
- 20c slate and olive (Julian Volio).
- 25c myrtle and lavender (Eusebio Figueroa).
- 50c indigo-blue and reddish lilac (José N. Castro).
- 1 col. black and sienna (Jesus Jimenez).
- 2 „ myrtle and claret (Juan Rafael Mora).

**Crete.**

New permanent Government issue of oblong size, two values, 25 lepta and 1 drachma, 25 lepta bearing a portrait of High Commissioner A. T. A. Zaimis, and the 1 drachma picture of landing of Prince George of Greece at Sude.

- 25l black and blue.
- 1d „ green.

**Colombia.**

Design of 1902-3. Perf., 11½, 12.

- 2c red.

**Cuouta.**

Design of 1905. Imperf.

- 50 red.
- 1p black.

**Santander.**

Design of 1905. Imperf.

- 5c black.
- 2cc " "
- 1p black on yellow.
- 5p blue on yellow.

**Denmark.**

A new design, with portrait of King Frederick VIII. Wmk. Crown, Perf., 13.

- 5öre green.
- 10 " scarlet.
- 20 " blue.
- 25 " sepia.
- 50 " purple.
- 100 " orange buff.

*Newspaper Stamps.*

Special design. Wmk. Crown, Perf., 12½, 13.

- 1öre olive.
- 5 " blue.
- 7 " carmine.
- 10 " lilac.
- 20 " green.
- 38 " orange.
- 68 " brown.
- 1kr claret and blue.
- 5 " yellow-green and rose.
- 10 " blue and stone.

**Dominican Republic.**

Design of 1901 issue. Printed in Berlin. Wmk. Crosses and Circles.

- ½c green and black.
- 1c rose-red "
- 2c chestnut "
- 5c blue "
- 10c purple "
- 20c olive "
- 50c brown "
- 1p violet "

**Egypt.**

Current issue overprinted, O. H. H. S. and Arabic characters.

- 1 mill brown.
- 2 " green.
- 3 " orange.
- 4 " vermilion.
- 5 " rose-carmine.
- 1 piast blue.
- 5 " slate.

**Ecuador.**

A new design of eight different values from 1 centavos to 1 sucre, with portrait as described in centre.

- 1c carmine and black (President Roca).
- 2c pale blue (President Dr. Noboa).
- 3c orange (President Gen. Robles).
- 5c lilac rose (President Gen. Urvina).
- 10c indigo (President Dr. Carcia Moreno).
- 20c pale green (President Carrión).
- 50c purple (President Dr. Espinoza).
- 1s blue green (President Dr. Borrero).

*Postal Fiscal.*

Design of 1898 overprinted vertically in black Correos, Tres Centavos, and dated 1905-1906.

- 1c chocolate.
- 2c carmine.
- 5c green.
- 10c black.

**France.**

Sower design of redrawn type, without sun and ground under feet.

- Perf., 14 × 13½.
- 5c deep green.
- 5c pale „
- 10c bright crimson.
- 25c deep blue.
- 25c pale „
- 25c blue.
- 30c orange.
- 30c pale orange.
- 30c orange vermilion.
- 35c violet.

**Military Frank Stamp.**

- Overprinted F. M.
- 10c vermilion.

**French Consular Office.**

## CHINA—

French-China design of 1900-2, with new overprint in English and in Chinese. Characters in black.

- 2 cents on 5c green
- 4 „ 10c carmine.
- 6 „ 15c pale red.
- 8 „ 20c brown purple.
- 10 „ 25c blue.
- 20 „ 50c brown and lavender.
- 40 „ 1f lake and green.
- 2 pi on 5f blue and buff.

**French Colonies.**

## ANJOUAN—

Design of 1906. Perf., 14 × 13½, 13½ × 14.  
45c black on green.

## DAHOMY—

Design of 1906. Perf., 14 × 13½, 13½ × 14.

- 1c grey.
- 2c chocolate.
- 4c „ on blue.
- 5c green.
- 20c black on bluish.
- 25c blue.
- 30c chocolate on flesh.
- 45c violet brown on green.
- 50c deep violet.
- 75c green on orange.
- 1fr black on azure.
- 2fr blue on rose.
- 5fr red on straw.

*Postage Due.*

Design of 1906.

- 5c green on toned.
- 10c marone.
- 15c blue on bluish.
- 30c red on cream.
- 50c violet.
- 60c black on buff.
- 1fr „ flesh.

## FRENCH GUINEA—

Design of 1906. Perf., 14 × 13½, 13½ × 14.

- 1c grey.
- 2c chocolate.
- 4c „ on blue.
- 5c green.
- 10c rose.
- 20c black on bluish.
- 25c blue.
- 30c chocolate on flesh.
- 45c violet-brown on green.
- 50c deep violet.
- 75c green on orange.
- 1fr black on azure.
- 2fr blue on rose.
- 5fr red on straw.

## GABOON—

Design of 1904 issue. Perf., 14 × 13½.

- 45c black on green.

## GRAND COMORO—

Design of 1897 issue. Perf., 14 × 13½.

- 45c black on green.

## GUADELOUPE—

Design of 1905 issue.

- 45c grey-brown on lilac.

## INDIAN SETTLEMENTS—

Design of 1892

- 45c black on green.



## INDO-CHINA—

A set of 5 different designs ; all are large oblong in shape, with pictures as described in centre. The value and the centre are printed in black.

75c	black and orange (Caubodgian).
1fr	„ lake (Annamite).
2fr	„ green (Muony).
5fr	„ blue (Laotian).
10fr	„ violet (Caubodgian).

A new design will wear a head in centre. The value and head printed in black. Perf., 14 × 13½.

1c	black and sepia.
2c	„ brown.
4	„ blue.
5	„ pale green.
10	„ scarlet.
15	„ violet.
20	„ „
25	„ blue.
30	„ chocolate.
35	„ olive-green.
40	brown.
45	orange.
50	carmine.
75	yellow.
1f	rose.
2f	green.
5f	blue.
10f	mauve.

## IVORY COAST—

Design of 1904. Perf., 14 × 13½ or 13½ × 14.

1c	grey.
2c	chocolate.
4c	„ on blue.
5c	green.
20c	black on bluish.
25c	blue.
30c	chocolate on flesh.
45c	violet-brown on green.
50c	deep violet.
75c	green on orange.
1fr	black on azure.
2fr	blue on rose.
5fr	red on straw.

*Postage Due.*

5c	green on toned.
10c	marone.
15c	blue on bluish.
30c	red on cream.
50c	violet.
60c	black on buff.
1fr	„ flesh.

## MARTINIQUE—

Design of 1892. Perf., 14 × 13½.

45c black on green.

Design of 1906. Perf., 14 × 13½ or 13½ × 14.

- 1c grey.  
 2c chocolate.  
 5c „ on blue.  
 5c green.  
 10c rose.  
 20c black on bluish.  
 25c blue.  
 30c chocolate on flesh.  
 40c carmine on azure.  
 45c violet-brown on green.  
 50c deep violet.  
 75c green on orange.  
 1fr black on azure.  
 2fr blue on rose.  
 5fr red on straw.

*Postage Due.*

- 5c green on toned.  
 10c marone.  
 15c blue on bluish.  
 30c red on cream.  
 50c violet.  
 60c black on buff.  
 1fr „ flesh.

## MAYOTTE—

Design of 1892. Perf., 14 × 13½.

45c black on green.

**Mayen Congo.**

(A NEW FRENCH COLONY).

Oblong shape. Type I. ; A Tiger.

- 1c grey-brown. Background, brown.  
 2c violet „ „  
 4c blue „ „  
 5c green „ blue.  
 10c rose-red „ „  
 20c light brown „ „  
 Upright shape. Type II. : Figure of Native.  
 25c blue Background, grey-green.  
 30c red „ „  
 35c chocolate „ blue.  
 40c dull green „ light brown.  
 45c violet „ light red.  
 50c green „ „  
 75c brown „ blue.  
 Upright shape. Type III. : Fern Forest.  
 1f dark green. Background, light lilac.  
 2f violet „ pale green.  
 5f blue „ rose.

**Moheli.**

Design of 1906. Perf.  $14 \times 13\frac{1}{2}$ .  
45c black on green.

**New Caledonia.**

Design of 1905. Perf.  $14 \times 13\frac{1}{2}$ .  
45c grey-brown on lilac.

**Oceanic Settlements.**

Design of 1892. Perf.  $14 \times 13\frac{1}{2}$ .  
5c bright yellow-green.  
10c rose-red.  
15c grey.  
25c blue.  
45c black on green.  
50c brown azure.

**Reunion.**

New Designs.



1c carmine and dull violet. Type 5.  
2c blue and brown.            "  
4c chestnut and grey-brown.   "  
5c   "           green.           "  
10c green and carmine.        "



20c blue-green and olive. Type 6.  
25c sepia and deep blue.       "  
30c green and yellow-brown.   "  
35c blue and olive-brown.       "  
45c rose and violet.            "  
50c blue and red-brown.        "



75c rose and brick red.	Type 7.
1f deep blue and olive-brown.	„
2f green and brick red.	„
5f sepia and rose.	„

### Upper Senegal and Niger.

Design of 1906. Perf. 14 by 14½ or 13½ by 14.

1c grey.
2c chocolate.
4c „ on blue.
20c black on bluish.
25c blue.
30c chocolate on flesh.
40c carmine on azure.
45c violet-brown on green.
50c deep violet.
75c green on orange.
1f black on azure.
2f blue on rose.
5f red on straw.

### Guatemala.



Type 8. Perf. 14.
12½c black and blue.
1902 issue, in new colour
50c blue and brown.

**Holland.**

Type 9. Perf. 12 by 12½.  
Commemorative Issue.

½c blue.  
1c lake.  
2½c vermilion.

*Postage Due.*

Design of 1881 issue. Overprinted in three lines—"Portzegel,"  
with value in numerals, and word "Cent."

½c on 1c lake.  
1c " 1c "  
1½c " 1c "  
2½c " 1c "  
5c " 2½c vermilion.  
6½c " 2½c "  
7½c " ½c blue.  
10c " ½c "  
12½c " ½c "  
15c " 2½c vermilion.  
25c " ½c blue.  
50c " ½c "  
1g " ½c "

**Honduras.**

Type 10. Perf. 14.  
1c green.  
2c carmine-red.

2c vermilion.  
 5c blue.  
 6c violet.  
 10c sepia.  
 20c cobalt.  
 50c claret.  
 1p orange.

### **Hungary.**

#### *Postage Due.*

Design of 1903. Perf. 15.  
 6f black and green.  
 10f            "            "  
 20f            "            "

### **Iceland.**

Each stamp bearing two portraits, to the right, of King Christian IX. and King Frederick VIII.

Wmk. Crown. Perf. 12½, 13.

3 aur yellow-brown.  
 4 ,, scarlet and grey.  
 5 ,, green.  
 6 ,, sepia and grey.  
 10 ,, scarlet.  
 16 ,, brown.  
 20 ,, blue.  
 25 ,, yellow-green and bistre.  
 40 ,, lilac.  
 50 ,, ,, and grey.  
 1 krona brown and blue.  
 2 ,, grey-green and olive brown.  
 5 ,, slate-blue and brown.

#### *Official Stamps.*

Wmk. Crown. Perf., 12½, 13.

3 aur yellow.  
 4 ,, green.  
 5 ,, chestnut.  
 10 ,, blue.  
 16 ,, crimson.  
 20 ,, yellow-green.  
 50 ,, pale violet.

### **Japan.**

Design of 1899-1901. Perf., 11½, 12.  
 6c marone.

## Luxemburg.



Types 11 and 12. Perf., 12½, 13.

1c pearl-grey.

2c grey-brown.

4c olive-bistre.

5c green.

6c mauve.

Perf., 11 × 11½.

12½c slate-green.

15c orange-red.

20c orange.

25c blue.

37½c green.

50c sepia.

*Postage Due.*

Type 13.

5c green and black.

10c " "

12½c " "

20c " "

25c " "

50c " "

1f " "

**Montenegro.**

Type 14. Perf.,  $12\frac{1}{2}$ .

- 1 para yellow-brown.
- 2 „ black.
- 5 „ pale green.
- 10 „ rose.
- 15 „ blue.
- 20 „ orange-red.
- 25 „ dull blue.
- 35 „ brown.
- 50 „ violet.
- 1 krone carmine.
- 2 „ green.
- 5 „ brown-red.

*Postage Due.*

Perf.,  $13 \times 12\frac{1}{2}$ .

- 5 para red-brown.
- 10 „ violet.
- 25 „ carmine.
- 50 „ green.

Acknowledgment of Receipt Stamps as Postage design.

- 25 para olive-green.

**Mozambique Co.**

Design of 1894. Chalky paper, Perf.,  $11\frac{1}{2}$ .

101 to 113.

- 2½r grey.
- 1cr pale green.
- 15r deep green.
- 25r carmine.
- 50r brown.
- 75r lilac.
- 100r blue on blue.
- 115r brown on rose.
- 130r brown on straw.
- 200r lilac on rose.
- 400r blue on straw.
- 500r black on blue.
- 700r mauve on straw.



**Nicaragua.**

Redrawn type of 1904 issue, and with imprint of Waterlow & Sons, Ltd. at foot of each stamp.

- 1c green.
- 2c red.
- 3c purple.
- 4c brownish orange.
- 5c blue.
- 6c slate.
- 10c bistre-brown.
- 15c olive.
- 20c claret.
- 50c orange.
- 1 peso black.
- 2 „ green.
- 5 „ violet.

*Overprinted Stamps.*

Overprinted as in 1906 issue, in black, reading downwards (there are two types of overprint in each value).

- 10c on 2c red.
- \$1 on 5p violet.

With an overprint, *B—Dto. Zelaya*, in black, inverted on 1904 issue.

- 1p black.
- 2p green.
- 5p violet.

With an overprint, *Costa Atlantica B*, in three lines in black on 1907 issue; the 1c to 50c, 2p and 5p, in black, and the 1p in violet.

- 1c green.
- 2c red.
- 3c purple.
- 4c brownish orange.
- 5c blue.
- 6c slate.
- 10c bistre-brown.
- 15c olive.
- 20c claret.
- 50c orange.
- 1 peso black.
- 2 „ green.
- 5 „ violet.

*Overprinted Costa Atlantica C.*

- 20c claret.
- 50c orange.

*Official Stamps.*

1906 issue overprinted in black

Reading up.

10c on 1c with thin o.  
 10c on 1c with thick o.  
 20c on 1c.  
 20c on 2c rose with thin o.  
 20c on 2c rose with thick o.  
 50c on 1c with thin o.  
 50c on 1c with thick o.

Reading down.

10c on 1c with thin o.  
 10c on 1c with thick o.  
 20c on 1c            "  
 50c on 1c with thin o.  
 50c on 1c with thick o.

Reading up.

\$1 on 2c.  
 \$2 on 2c.  
 \$3 on 2c.  
 \$4 on 5c.

Reading down.

\$1 on 2c.  
 \$2 on 2c.  
 \$3 on 2c.  
 \$4 on 5c.

The following varieties are known in the four different values, reading up and down. Thick "V" in Vale, numeral 1 for L in Vale.

Fiscal Stamps overprinted for use as Official. Perf., 14 to 15. Overprinted value, with the words *Correos—1907—Official*, and the value repeated at the bottom of stamp in thinner type.

10c on 2c in black.  
 35c on 1c in red  
 70c on 1c in blue.  
 70c on 1c in orange.  
 1p on 2c in green.  
 2p on 2c in olive brown.  
 3p on 5c in blue.  
 4p on 5c in green.  
 5p on 5c in green.

The colours of the above stamps are—1c indigo, 2c orange, 5c brown

### Norway.

Design of 1894. Perf.,  $14\frac{1}{2} \times 13\frac{1}{2}$ , Wmk.

30 öre slate-grey.

With portrait of King Haakon VII. Perf.,  $14\frac{1}{2} \times 13\frac{1}{2}$ .

1kr green.  
 1½kr blue.  
 2kr rose-carmine.

**Panama.**

Design of 1906. Overprinted "Canal," 2 öre in black, reading down in two lines.

1c	black and green.
5c	„ blue.
8c	„ purple.
10c	„ violet.

**Paraguay.**

Design of 1904-6. Perf.

10c	green.
20c	bistre.
20c	green.
30c	grey.
1p	black and orange.
2p	„ blue.
5p	„ red.
10p	„ orange-brown.
20p	„ olive-green.

Overprinted *Habilitado en 5 Centavos*, in black.

5c	on 2c	vermilion.
5c	on 2c	olive.

ERROR—Figure 5 omitted.

( )c on 2c vermilion.

*For Official Use.*

Design of 1904 issue, but inscribed *Official*.

1c	orange.
1c	olive.
2c	pale green.
2c	vermilion.
2c	olive.
5c	blue.
10c	deep violet.
1p	black and red.

**Peru.**

Issue of 1905, overprinted *Un Centavo* in red, and *Dos Centavos* in violet.

1c	on 12	black and blue.
2c	on 12	„ „

**Roumania.**

Charity Stamps.

3b	brown and red-brown.
5b	„ green.
10b	„ carmine.
15b	„ violet-blue.

Fresh Design with portrait of King Charles.

- 1b brown.
- 3b chestnut.
- 5b green.
- 10b rose.
- 15b violet.
- 25b blue.
- 40b green.
- 50b orange.
- 1l black and brown.
- 2l green.

#### **Russian China.**

Stamps and overprint the same as in 1899-04 issue, but the paper  
Vertically laid.

- 4k carmine.
- 14k rose and blue.
- 35k green and violet.
- 70k orange and brown.
- 1r " "
- 3½r grey and black.
- 5r pale blue, deep blue and green.
- 7r yellow and black.
- 10r pale grey, scarlet and yellow.

#### **San Marino.**

Perf. 12.

- 1c brown.
- 15c slate.
- Express Letter Stamp.
- 25c rose.

#### **Salvador.**

Stamps of 1906 issue overprinted with a shield, as in 1900 issue, in black.

- 1c black and green.
- 2c " carmine.
- 3c " yellow.

As last but overprinted with a numeral in centre of two discs in black.

- 1c on 5c black and indigo.
- 1c on 6c " carmine.
- 2c on 6c " "
- 10c on 6c " "

New Design showing picture of Palace and shield of 1904 issue  
overprinted. Perf. 11½.

- 1c green.
- 2c red.
- 3c pale yellow.
- 5c indigo.
- 6c orange-red.
- 10c violet.
- 12c "

- 13c sepia.  
 24c rose.  
 26c bistre.  
 50c orange-yellow.  
 100c turquoise blue.  
 Shield omitted.  
 2c red.

**Siam.**

Fiscal Stamp overprinted Siam Postage with value in black.

- 10t olive green.  
 20t " "  
 40t " "

**Spanish Colonies.***Cuba.*

With Portrait of Major-General Antonio Maceo  
 Perf. 12.

- 50c slate.

*Elobey, Annobon, and Corisco.*



Perf. 14. Type 15.

- 1c purple.  
 2c black.  
 3c orange-red.  
 4c grey-green.  
 5c blue-green.  
 10c lilac.  
 15c carmine-rose.  
 25c orange-buff.  
 50c blue.  
 75c brown.  
 1p sepia.  
 2p vermilion.  
 3p chocolate.  
 4p bronze-green.  
 5p lake.  
 10p rose.

*Fernando Poo.*

Perf. 14. Type 15.

- 1c slate-black.
- 2c bright rose.
- 3c purple.
- 4c black.
- 5c orange-buff.
- 10c claret.
- 15c bronze-black.
- 25c purplish-brown.
- 50c emerald-green.
- 75c orange-red.
- 1p dull blue.
- 2p chocolate.
- 3p dull rose.
- 4p lilac.
- 5p bronze-brown.
- 10p orange-brown.

*Rio De Oro.*

Perf. 14. Type 15.

- 1c claret.
- 2c bronze-black.
- 3c purplish-brown.
- 4c orange-red.
- 5c bronze-brown.
- 10c chocolate.
- 15c slate-blue.
- 25c bronze-green.
- 50c dull purple.
- 75c orange-brown.
- 1p orange-buff.
- 2p purple.
- 3p blue-green.
- 4p dull blue.
- 5p dull red.
- 10p emerald-green.

*Spanish Guinea.*

Perf. 14. Type 15.

- 1c bronze-green.
- 2c dull blue.
- 3c lilac.
- 4c pale green.
- 5c dull lake.
- 10c bistre.
- 15c brown.
- 25c blue.
- 50c chocolate.
- 75c green.
- 1p orange.
- 2p purplish-brown.
- 3p grey-green.

4p carmine.  
5p green.  
10p lilac.

*Surinam.*

Same design as Corocao of 1902-5.

1c olive-brown.  
2c red-brown.  
2½c green.  
3c orange.  
10c slate.  
15c brown.  
20c olive.  
25c violet.  
30c chestnut.  
50c lake-brown.  
1g dull lilac.  
2½g slate.

**Switzerland.**

Type 16.

On thick granite paper. Perf. 11½.

2c yellow.  
5c green.  
10c carmine.

**United States.**

Issue of 1902. Imperf.

1c green.  
2c carmine.



Types 17, 18, 19.

1c green.  
2c carmine.  
5c blue.

**Uruguay.**



Perf., 11½. Type 20.

2c red.  
5c blue.  
7c brown.  
50c rose.





## Stamp Perforating Machines at Somerset House.

### VARIABLE FEEDMOTION FOR PERFORATING STAMPS.

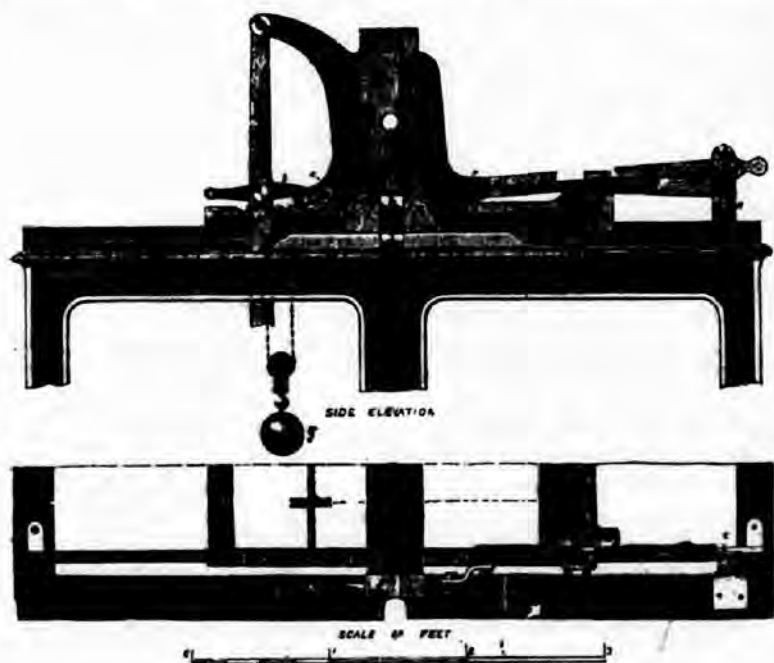
*This description was written by Thos. Peacock\* for the Engineer, 26/6/74.*



THE accompanying sketch shows a plan and an end view of a mechanical arrangement applied to the feeding apparatus of the stamp perforating machines in the stamping department at Somerset House, whereby a single rack is made to do the work of a number of racks differently graduated, and a gain of full ten per cent. is obtained in the rate of perforation. In drying, after printing and gumming, the sheets of stamps shrink unequally. In the process of perforation, therefore, as the sheets are perforated only one row of holes at a time, although in packs from five to seven sheets thick, it is necessary that they should be sorted out into their various lengths by a graduated gauge. As the perforating machine was originally constructed, this difference of length of sheet in the various parcels of stamps was met by the frequent and troublesome change of a number of racks, the length of which corresponded with the various lengths as shown on the gauges. Under the improved arrangement here shown a single rack only is used, being made by a simple adjustment to serve for all lengths of sheet. As there is practically no limit to the nicety of this adjustment, a much greater accuracy of perforation results, and the rack never being removed from the machine, all the loss of time of the frequent changes is saved. The action of the apparatus is as follows:—

The moving carriage *a* is brought by its weight *g* into the starting position, when the axes of the pins *F* and *E* are in one line. A parcel of sheets pinned on a tympan frame is then placed in a fixed position on the carriage *a*. The machine is started, and by the action of the pawl *b* upon the rack the

sheets are fed forward, one row of stamps at a time, till the whole pack is perforated. The pawls *b c* are then automatically thrown off, and the frame comes back to its starting place in readiness for a fresh supply of sheets. The rack slides longitudinally on the carriage *a* to the extent of about  $\frac{5}{8}$  in., bearing at one end against the side of a wedge *C*, at the other end being guided by a stud upon the carriage working in a slot in the rack. Now, it is obvious that when the lever *A* is in a horizontal position the wedge *C*, which is in connection with it



by means of the block *D*, which slides in a groove in the side of this lever, receives no motion during the passage of the sheets under the punches, and their perforation intervals correspond exactly with the length of the teeth of the rack. When, however, the lever *A* is raised out of the horizontal position, the wedge against which the pawl holds the rack rises at each onward movement of the pawl, and the rack slides slowly forward on the carriage. This has in result the effect of shortening slightly each tooth of the rack, and consequently

their collective length. The rack resumes its starting position as the carriage is brought back by its weight, retiring against the advance of the wedge as the block *D* slides down the groove of the lever. It will be readily seen that by means of this mechanism as many lengths of rack may be obtained as there may be degrees of adjustment of the incline of the lever *A*. Twelve adjustments are shown in the drawing. Practically the only limit is the eyesight of the sorter.

In point of fact, before the perforation of stamps there had been little or no perforation of paper. Bemrose's single line foot machine for counterfoils of cheques came some time later. The gum of the sheets and the large quantities to be dealt with made the perforation, before experience had been gained, a very troublesome operation. The machines, massive, and costing about £400 each, were driven by steam, there being five of them in all, as first made they were full of constructional defects, and it took years to perfect them. Napier gave very little help, and such improvements as were slowly made, in the midst of other pressing official occupations, were mainly made by Ormond Hill and myself, till in 1874, assisted by Mr. Sworder, our "Practical Mechanician," I devised the adjustable rack. This was an immense improvement, and was quickly followed by the "Continuous Feed," which nearly doubled the output. Soon after this the machines were taken over by the contractors and removed to their premises, where all the perforation has since been carried on. The splitting of the bottom plates, which Mr. Westoby refers to, was not alone due to the closeness of the holes, but also to the fact of the plate being made in a double thickness of steel and brass, rivetted together before the drilling. The punched out pieces of paper wedged themselves between the brass and steel plates, gradually lifting and splitting the latter, despite of the holes being slightly trumpeted, upwards, from the bottom of the Plates.

---

\* Thomas Peacock, appointed 23rd October, 1853. Retired as Principal of the Stamping Department (Inspector of Stamping) Somerset House, 31st December, 1893.

## Philatelic Auction Summary.

A GUIDE OF THE PRINCIPAL PRICES REALISED AT AUCTION  
DURING THE PAST SEASON IN LONDON STAMP SALE ROOMS.

All stamps are used unless otherwise described. Those marked with an asterisk (\*) are unused. Auctioneers are indicated by the following letters:—G.—Glendining & Co., Ltd. H.—William Hadlow. P.—Plumridge & Co. S.—Puttick & Simpson. V.—Ventom, Bull, & Cooper.

DESCRIPTION.	Price.			Auctioneer.	Date.
	£	s.	d.		
Afghanistan, 1871-72, 6sh purple* ...	7	0	0	V.	7-2-07
do. 1873-74, shahi purple* ...	3	14	0	V.	23-5-07
do. 1875-76, 1rup black ..	4	12	6	V.	7-2-07
do. 1878, shahi black, pair ...	9	5	0	V.	23-5-07
Argentine, 1899, 1 peso, blue and black, with centre inverted, ...	20	0	0	S.	
Austrian Italy, 1850, 45 centes blue, a block of 4 mint ...	19	0	0	S.	26-3-07
Barbados, 1892, ½d on 4d, surcharged red and black* ...	7	5	0	V.	13-12-07
Belgium, 1849, 10c brown, a strip of 7 from corner of sheet, with full margin* ...	17	0	0	S.	26-3-07
do. 1850, 10c brown, wmk. with frame, a block of 12 mint ...	100	0	0	S.	26-3-07
do. 1850, 20c blue, wmk. with frame, a block of 8 mint ...	50	0	0	S.	26-3-07
Benin, 1897, 75c in black on 15c blue ...	5	5	0	P.	9-5-07
British Central Africa, 1895, no wmk., £1 orange, mint ...	3	0	0	P.	11-4-07
British Columbia, 1865, 5c rose, very fine ...	5	10	0	G.	10-12-07
British Guiana, 1850, 4c orange ...	25	0	0	S.	26-3-07
do. 1850, 12c blue ...	20	0	0	S.	22-10-07
Canada, 1851, 12d black, imperf. ...	50	0	0	S.	26-3-07
do. 1852, 6d greenish-purple* ...	14	15	0	P.	17-1-07
do. 1852-57, 6d greenish, wove paper* ...	8	0	0	P.	17-1-07
Cape of Good Hope, 1853-64, 4d blue, rouletted, a pair ...	9	0	0	V.	7-3-07
Cape of Good Hope, 1861, 1d scarlet, a block of 4 ...	34	0	0	P.	17-1-07
Cape of Good Hope, 1861, 4d blue, a pair ...	9	5	0	P.	17-1-07
do. 1874, three pence in red on 4d, error <i>Pencb.</i> ...	2	4	0	H.	21-10-07

DESCRIPTION.	£ S. D.			Auctioneer.	Date.
	Price.				
Ceylon, 1857, 4d rose ... ..	12	10	0	P.	9-5-07
do. 1857, 8d deep yellow-brown ... ..	12	10	0	P.	9-5-07
do. 1857, 9d lilac-brown ... ..	6	15	0	P.	9-5-07
do. 1857, 2/- blue ... ..	8	5	0	P.	9-5-07
do. 1861, 8d yellow-brown*, rough perfs.	10	15	0	P.	31-1-07
do. 1863-7, 1d blue, perf., 11½ by 12* ...	6	10	0	G.	10-12-07
do. 1872, 4c grey, perf., 14 by 12½* ...	3	5	0	P.	26-4-07
do. 1872-80, 2 rup 50c, perf., 12½* ...	6	10	0	G.	10-12-07
do. 1883-84, 16c lilac, wmk. C.A.* ...	6	0	0	G.	10-12-07
do. 1888-90, 2c on 4c Gibbon, No. 172a	4	4	0	H.	10-6-07
Cyprus, error, 80 paras on 1d, p. 216 ...	7	5	0	P.	11-4-07
do. 30 paras on 1d, pl. 216, variety with two surcharges, one inverted*	4	5	0	P.	11-4-07
do. 30 paras on 1d, pl. 220, variety with two surcharges, one inverted*	4	0	0	P.	11-4-07
Gambia, 1874, 4d brown, sheet of 50* ...	31	0	0	S.	26-3-07
Gibraltar, 1889, the error value omitted (Gibbons) 35, mint ... ..	12	10	0	G.	25-6-07
Gold Coast, 1891, 20/- green and red, mint ...	7	0	0	P.	31-1-0
Grenada, 1871, 1/- mauve, error <i>Shilling</i> ...	7	0	0	S.	22-10-0
Great Britain, 1840, 1d black, the so-called Royal Reprint, wmk. large Crown, mint ... ..	2	10	0	P.	1-11-07
do. 1841, 1d red, variety, showing double star ... ..	1	1	0	P.	3-10-07
do. 1847-54, 6d violet, octagonal, a pair, mint ... ..	11	0	0	S.	15-1-07
do. 1847-54, 6d mauve, mint ... ..	8	0	0	G.	16-4-07
do. 10d brown without die number* ...	13	10	0	G.	16-4-07
do. 1848-50, 1d Archer roulette, mint ...	8	10	0	G.	16-4-07
do. 1867, 6d violet, imperf.* ... ..	2	2	0	P.	17-1-07
do. 1867, 6d violet, pl. 8, imperf. ...	3	12	6	P.	11-4-07
do. 1870, 1½d error O.P.P.C. ... ..	2	8	0	P.	11-4-07
do. 1870, 1½d error O.P.P.C.* ... ..	8	0	0	S.	8-10-07
do. 1867-80, 8d brown-lilac, mint ...	4	4	0	V.	2-5-07
do. 1867-80, 10d red-brown, plate 2 ...	15	0	0	G.	10-12-07
do. 1867-80, 1/- green, pl. 5 forgery ...	1	1	0	H.	23-9-07
do. 1867-80, 2/- pale blue mint ... ..	2	12	6	P.	11-4-07
do. 1881, 1d lilac, imperf.* ... ..	1	1	0	P.	3-10-07
do. 1885, 5d green, stroke instead of dot under "d," mint ... ..	17	0	0	S.	26-3-07
do. I.R. Official, 1887, £1 green mint, ... ..	12	0	0	P.	14-2-07
do. I.R. Official, 1902, 5/- ... ..	15	0	0	S.	23-4-07
do. I.R. Official, 1902, 10/- ... ..	31	0	0	V.	5-12-07
do. Army Official, 6d, 1902, 2nd type ... ..	2	6	0	V.	2-5-07
do. Army Official, 6d, mint do. ... ..	5	0	0	S.	23-4-07
Levant, 1906, 1 piastre on 2d mint ... ..	11	0	0	P.	14-2-07
do. 1906, 1 piastre on 2d, used ... ..	4	10	0	P.	11-1-07

## Proofs, Essays, etc., of Great Britain.

		S.	8-10-07
		£	s. d.
1840,	1d in black, die 1, lettered "Old Original 1" ...	2	0 0
"	1d in bright red, die 1, lettered "Old Original 1" ...	4	2 6
1854-57,	1d in black, lettered "New 3" ...	1	12 6
"	1d in deep purple, lettered "New 3" ...	3	17 6
"	1d in emerald ... ..	4	5 0
"	1d black, reprint wmk. large crown inverted, block of 9 ... ..	19	0 0
"	2d in brick-red, lettered "New Die 1, 34" ...	4	15 0
"	2d in olive-green ... ..	4	10 0
1858-79.	1d in two shades of blue, from plate 75 (two stamps),	3	3 0
"	1d in dark blue do.,	1	12 6
"	2d in black, plate 9. Printed for the Paris Exhibition, 1867; block of 9 ... ..	5	0 0
1867-78.	5/-, 10/-, and £1 in black, plate proofs ...	4	5 0
"	5/-, 10/-, and £1 in black, die proofs ...	7	15 0
1870.	½d in black, die proof ... ..	2	2 0
"	½d in cobalt " ... ..	3	15 0
"	½d in salmon " ... ..	3	5 0
"	½d in olivegreen " ... ..	4	0 6
"	1½d in purple " lettered "35," ...	4	15 0
"	1½d in deepgreen " " ...	5	0 0
1873-80.	2½d, 3d, 4d, 6d, 8d, and 1/- in black, die proofs, ...	7	5 0
"	6d, plate 16; 1/-, plate 13; in black—a pair of each, plate proofs, scarce ... ..	2	2 0
1880.(?)	1d in black. Essays in Bacon's new "indenting" process, sheet of 36 ... ..	3	0 0
"	1d in rose do. sheet of 120 ... ..	6	0 0
"	½d, 1½d, and 2d in mauve, die proofs, by the same process	3	12 6
"	½d, 1½d, and 2d in scarlet " " ...	4	0 0
1880-81.	½d, 1d, 1½d, 2d, and 5d in black, die proofs ...	8	10 0
"	" " " " " plate proofs ...	3	0 0
"	De la Rue's colour scheme for the new issue ...	5	5 0
1887-92.	½d to 1/- values in black ... ..	13	10 0
Telegraphs, 1876-81.	Die proofs of 1d, 3d, 4d, 6d, 1/-, 3/-, 5/-, 10/-, £1, and £5; and 1/- Telegraph form stamp, in black, on cardboard ... ..	10	10 0
Proof of 1d Mulready envelope on India paper ...	...	2	5 0
" 1d letter-card in blue ... ..	...	0	13 0
" 1d envelope, die reproduced in line by Joubert's process, in black ... ..	...	4	0 0

DESCRIPTION.	£	S.	D.	Price.	Auctioneer.	Date.
Hawaiian Islands, 1863, 2c black on thin greyish paper, variety of; "I" INTER dropped ... ..	4	10	0	V.	23-5-07	
India, 1854, ½a red, pair* ... ..	15	10	0	S.	26-3-07	
do. 1854, 4a red and blue* ... ..	5	0	0	S.	22-10-07	
do. 1856, 2a yellow green ... ..	3	15	0	P.	11-4-07	
do. 1867-73, ½ a blue (Service) die 2, block of 4 mint, ... ..	11	10	0	S.	23-4-07	
do. 1867-73, 4a purple (service) ... ..	4	7	6	P.	11-4-07	
Italy, Estero, 10c orange, variety, left upper corner not altered* ... ..	2	16	0	V.	18-4-07	
Lagos, 1884-86, 2/6 olive black ... ..	3	5	0	V.	4-4-07	
do. 1884-86, 5/- blue ... ..	4	7	6	V.	4-4-07	
do. 1904, 2/6 green and carmine, mint, ... ..	2	2	0	P.	17-1-07	
do. 1904, 10/- green and brown, mint, ... ..	7	7	0	P.	17-1-07	
Liberia, 1892, 8c black and brown, with centre inverted* ... ..	4	2	6	S.		
Malta, 1885, 4d brown, imperf., pair, ... ..	7	10	0	S.	26-3-07	
Mauritius, 1848, 2d deep blue* ... ..	50	0	0	V.	23-5-07	
do. 1848, 1d orange, very early impression ... ..	12	0	0	S.	26-3-07	
do. 1848, 2d blue, error <i>Penoc</i> , from early impression ... ..	8	0	0	S.	26-3-07	
do. 1859, 1d red* ... ..	5	0	0	P.	11-1-07	
do. 1859, 2d dark blue (larger fillet) ... ..	9	0	0	S.	26-3-07	
Natal, 1862, 3d blue, wmk. star, imperf., block of 20* ... ..	20	0	0	S.	26-3-07	
do. 1870, 1/- green, curved, overprint "Postage" in black ... ..	6	2	6	V.	7-3-07	
do. 1875, 6d violet, error twice, surcharged "Postage" ... ..	2	2	0	V.	11-10-07	
Naples, 1860, ½ tornese, blue, arms, ... ..	13	0	0	S.	26-3-07	
Nevis, 1867, 4d deep rich orange, perf., 15, engraved, mint ... ..	2	0	0	H.	10-6-07	
do. 1878, 6d grey, lithographed, mint ... ..	4	17	6	V.	13-12-07	
do. 1883, ½d in black, on half of 1d lilac* ... ..	4	0	0	S.	7-5-07	
New Brunswick, 1/- violet ... ..	8	0	0	V.	4-4-07	
Newfoundland, 1857, 2d scarlet, unused ... ..	33	0	0	S.	24-9-07	
do. 4d orange, unused and very fine ... ..	9	0	0	S.	24-9-07	
do. 6d scarlet, unused with part gum ... ..	40	0	0	S.	24-9-07	
do. 6d scarlet vermilion ... ..	7	0	0	V.	4-4-07	
Newfoundland, 1857, 6½d scarlet, unused ... ..	6	10	0	S.	24-9-07	
do. 1857, 1/- scarlet, unused and very fine ... ..	38	0	0	S.	24-9-07	
do. 1860, 4d orange* ... ..	11	10	0	S.	22-10-07	
Nova Scotia, 1851-53, 1/- violet* ... ..	20	0	0	S.	26-3-07	
do. 1851-53, 1/- purple* ... ..	19	10	0	S.	26-3-07	
New South Wales, 1850-51, Sydney Views do. 1850-51, 1d lake-red on greyish ... ..	8	0	0	S.	26-3-07	
do. 1850-51, 1d carmine, plate 2, laid paper ... ..	7	0	0	S.	26-3-07	



DESCRIPTION.	£ s. d.			Auctioneer.	Date.
	Price.				
New South Wales, 1850-51, 1d deep carmine,					
pl. 1, pair ... ..	3	15	0	S.	26-3-07
do. 1850-51, 2d deep blue, plate					
3, 1st retouch ... ..	3	15	0	S.	24-9-07
do. 1850-51, 2d dull blue, plate					
1 ... ..	3	3	0	S.	26-3-07
do. 2d lilac blue, laid paper,					
strip of four, No. 19, 20, 21,					
and 22 on plate, No. 20,					
Gibbons 37a ... ..	30	0	0	G.	15-10-07
do. 1850-51, 2d, the error with					
"crevit" omitted ... ..	0	0	0	S.	18-6-07
do. 1850-53, laureated, no wmk.					
1d red on bluish, the error,					
"Wale"*	9	15	0	S.	
New Zealand, 1855, 1/- on bluete* ... ..	6	0	0	H.	30-4-07
do. 1860-62, 1d verm., pelure paper,					
imperf. ... ..	10	0	0	S.	7-5-07
do. 1871, wmk. Star, perf., 10 by					
12½, 2d vermilion, a pair, one					
is retouched ... ..	4	17	6	S.	23-4-07
Orange River Colony, V.R.I., 2nd printing, 3d					
blue, with second diagonal					
overprint, mint ... ..	1	5	0	S.	
do. V.R.I., 1st printing, 6d					
carmine, a pair, one is the					
error without figure value,					
mint ... ..	7	15	0	S.	
do. V.R.I., 5/- green, with-					
out stop after "V," mint ... ..	4	7	6	S.	
Peru, 1858, ½ peso rose-red, error ... ..	7	0	0	S.	26-3-07
Roumania, Moldavia, 1858, 27 paras black on					
rose ... ..	50	0	0	S.	26-3-07
do. do. 1858, 54p green ... ..	16	0	0	S.	26-3-07
do. do. 1858, 81p blue on blue	250	0	0	S.	26-3-07
do. do. 1858, 108p blue on rose	25	0	0	S.	26-3-07
Russia, 1884, 3½ roubles, grey and black, im-					
perforate, unused ... ..	15	0	0	V.	5-12-07
do. 1884, 7 roubles, orange-yellow and					
black, imperforate, unused ... ..	12	0	0	V.	5-12-07
Russian Levant, 1865, 2k brown and blue, mint	8	5	0	P.	14-3-07
do. 2k brown and blue ... ..	4	5	0	P.	28-2-07
do. 20k blue and red ... ..	5	10	0	P.	14-3-07
St. Helena, 1884-94, wmk. C.A., ½d emerald,					
with double surcharge, unused	5	5	0	S.	24-9-07
St. Lucia, 1892, ½d on 3d lilac and green, error,					
surcharge inverted ... ..	2	0	0	V.	22-2-07
St. Vincent, 1855, 1d pale-blue, late shade ... ..	3	12	6	P.	9-5-07
do. 1866, 1d rose-red, perf., 11 by 15	5	5	0	P.	9-5-07
do. 1866, 1d rose-red, compound, perf.*	25	0	0	V.	7-3-07
do. 1880, 5/- rose, wmk. star, mint ... ..	8	12	6	S.	22-10-07



DESCRIPTION.	£ s. D.			Price.	Auctioneer.	Date.
St. Vincent, 1880, 1d in red on half of 6d blue-green, a pair, mint ...	11	10	0	S.	22-10-07	
do. 1881, Provisional "One Penny" on 6d yellow-green, mint, ...	3	5	0	V.	13-12-07	
St. Pierre and Miquelon, 5c on 2c, with inverted surcharge ...	3	8	0	P.	28-2-07	
Seychelles, 1893, 15c on 16c, surcharge inverted, mint ...	3	17	6	P.	9-5-07	
do 3c on 16c, inverted surcharge	2	6	0	II.	4-11-07	
Spain, 1854, 1 real, pale blue, used ...	7	10	0	V.	18-4-07	
South Australia, 1856-59, 1/-, purple, proof ...	2	2	0	S.	18-4-07	
do. 1859-70, 1/- yellow, roul., pair*	20	0	0	S.	18-4-07	
do. 1867-70, 6d Prussian blue, perf. x roul., mint ...	7	0	0	S.	26-3-07	
do. 1870-71, 6d Prussian blue, perf. 10 by 11½, mint ...	5	0	0	S.	26-3-07	
do. 1870-71, 10d on 9d in blue, printed on both sides, ...	4	0	0	H.	30-4-07	
do. 1902, 8d blue, error <i>Eight</i> ...	13	10	0	S.	26-3-07	
Switzerland, Zurich, 1843, 4 rappen, black and red, type 3, with vertical lines ...	13	10	0	S.	4-6-07	
do. do. do. type 2 ...	10	10	0	S.	4-6-07	
do. do. do. type 4 ...	8	8	0	S.	26-3-07	
do. do. do. type 5 ...	8	15	0	S.	22-10-07	
do. Vaud, 1849, 4c black and red	17	10	0	S.	26-3-07	
do. Geneva, 1843, 5 plus 5c, yellow-green pair cut wrong way ...	19	0	0	G.	16-4-07	
Transvaal, 1877, 6d blue on blue, surcharge inverted, Gibbons, No. 209, fine ...	42	10	0	G.	26-11-07	
do. 1879, 1d red on orange, wide roulette* ...	8	0	0	G.	16-4-07	
Tobago, 1879, £1 mauve, mint ...	7	5	0	S.	22-10-07	
Trinidad, 1852, 1d grey-blue, Lithographed late impression* ...	11	0	0	V.	13-12-07	
do. 1863, 1/- indigo, no wmk. perf. 11½ to 12 ...	4	15	0	P.	9-5-07	
do. Official 5/- dull lake, O.S., mint	3	3	0	V.	2-5-07	
Turkey, 1863, 20 paras, yellow, with signature reversed, Gibbons, 12a ...	9	10	0	G.	16-4-07	
do. do. tête bêche, pair, mint ...	20	0	0	P.	26-4-07	
do. do. pair used ...	14	0	0	P.	26-4-07	
do. 1863, 1 piastre slate-blue, thick paper, with signature reversed, mint	26	0	0	P.	26-4-07	
do. 1863, do. do. used	15	8	0	P.	26-4-07	
Turks' Island, 1873-79, 1/- lilac, wmk. star, mint	14	10	0	S.	22-10-07	
do. 1881, 2½d on 1/-, dull blue, type II	9	5	0	V.	4-4-07	
Tuscany, 1851-52, 60 crozie, red on azure ...	10	5	0	S.	26-3-07	
do. 1860, 3 lire, yellow ...	36	0	0	S.	26-3-07	
St. Vincent, 1881, 4d on 1/-, vermilion ...	7	10	0	P.	31-1-07	

DESCRIPTION.	£ s. D.			Auctioneer.	Date.
	Price.				
United States, 1880, re-issue 1c to 90c, all unused	63	0	0	G.	15-10-07
Victoria, 1857-63, 1d yellow-green, no wmk,					
perf., 12, a pair* ... ..	13	10	0	S.	26-3-07
do. 1860, 3d deep blue, laid paper* ...	16	0	0	S.	26-3-07
do. 1860, 6d orange ... ..	4	0	0	P.	31-1-07
Zanzibar, Nov., 1895, 8a dull mauve, error					
<i>Zanzidar</i> ... ..	8	15	0	G.	28-5-07
do. Decr., 1895, 2½ on 1½a sepia do.	3	3	0	G.	28-5-07
do. Novr., 1895, overprint in blue, 1a plum					
(Gibbons 2), very fine ... ..	4	2	6	G.	25-6-07
do. 2a ultramarine with double overprint					
(Gibbons 23), mint ... ..	4	5	0	G.	25-6-07
do. 5r blue and violet, with double over-					
print, one inverted (Gibbons					
25), mint ... ..	5	10	0	G.	25-6-07
Zululand, 1894, £5 black on red, ... ..	5	0	0	P.	11-4-07
do. Postal Fiscals, 1893, £1 green,					
postally used ... ..	4	5	0	S.	4-6-07



## Postcards.

By "REPLY-PAID."



I CAN well remember the interest created in philatelic circles, in July, 1870, by the issue of the first postcards. This took place in Germany, and the example thus set was quickly followed by other stamp-issuing countries, until now postcards are universally in use.

From 1870 to 1885 may well be spoken of as "the good old times"—stamps and philatelic stationery were all cheap, and most collectors took everything. It is grieving to think of the possibilities missed—10s. and £1 "cross" and "anchor" at face; and such things as 4d. on 1s. St Vincent at 30s.; the French error (10c. and 15c., *se tenant*) at 12s. 6d.: I had them all!

Now, however, everything is far dearer, and stamps which formerly cost a few shillings fetch as many pounds. There can be only one result as regards the ordinary collector, for the courses open are but two—generalism or specialism—each of which necessitates considerable expenditure, the one because the field is so large, the other because every possible variety is sought after and collected. The result, I foresee, is that the collector, who is not blessed, or cursed, with fairly ample means, must take up some branch of his hobby, which, whilst giving him a fair field for research, is capable of being brought to practical completeness at a comparatively small cost; and the branch I suggest is POSTCARDS.

The number of issued cards, single and reply, is as nothing compared with the vast quantities of stamps; speculation seldom touches them; needy States find a better and surer source of revenue out of adhesives; reprints are almost unknown; forgers seldom trouble; watermarks appear in very few cases, *e.g.*, Norway and United States; perforations, except on some of the "reply" cards, are naturally not to be met with; and, finally, postcards are, taking them all round, very cheap. I doubt if even the scarcest would fetch a five-pound note, though I admit that some of the minor varieties are very hard to find, but *when found*, not very expensive to purchase.

After being a general collector for many years, I gave up postal stationery; then dropped one Country after another, recognising the impossibility of getting together even a fair collection, till I came down to one Country only. That Country, alas!—I say "Alas" from a philatelic point—was Great Britain; but it was no use; I could not do it justice or satisfy myself, and the sight of huge "Great Mogul" accumulations positively frightened me, so I sold out my £1 anchor and other gems at good (*very* good, considering the cost!) prices, and "auctioned" the remainder.

My intention then was to retire from philately, but one cannot always carry out an intention, good or bad. I must collect something, and it must be connected with the Post, so I am taking up the now unfashionable and despised postcard, and feel sure that its study will afford me a great deal of pleasure. The chief drawback from the collection of postcards is their size (the largest measuring about  $6\frac{1}{2}$  inches by  $4\frac{1}{2}$  inches, and the smallest some  $4\frac{1}{4}$  inches by  $2\frac{1}{2}$  inches), and the consequent difficulty in mounting them in a satisfactory manner. The plan I adopt is to use cardboard mounts of a size sufficient to take the largest postcard known, making each into a frame to fit its own particular card. The cards, with their respective mounts, are thus all of the same size, and they can be kept loose in boxes, or placed in albums of cardboard leaves (movable or fixed), cut so as to admit the insertion of the mounted card, which can then be examined front and back, and can, if necessary, be easily removed to another page.

There is, in fact, some idea of bringing out a postcard album made on these lines; it fulfils its purpose extremely well, though without diagrams it would be difficult to explain, and I have, therefore, not attempted it.

Many of the philatelic journals still continue to chronicle some, at all events, of the few new postcards as they appear; and there are, or perhaps I should say "were," some magazines entirely devoted to the "stationery" branches of philately. The collector can, therefore, keep his knowledge and lists fairly up to date. And doubtless it is possible to obtain, through one or other of the "New Issue" services, most, if not all, of the new postcards as they appear.

On running through some of the principal Catalogues, which list stationery, I find, on a rough computation, that there are

about 3600 different postcards ; and of these a small proportion furnish varieties and sub-varieties, principally caused by the variations in borders and inscriptions which have been set up from type, and not printed from a plate.

Postcards can, for many reasons, commend themselves to collectors. The face value always being low, unused copies can be taken ; the number in a set is usually only three or four ; a fairly complete collection may be made at, compared with one of adhesives, a very small cost ; many cards are elegantly designed and excellently engraved and printed, and, apart from their philatelic interest, are worthy of collection on account of their beauty and of their interest to even outsiders ; there is plenty of scope for research, and a happy hunting-ground for the seekers after minor varieties, especially in some of the Continental issues ; and of those cards, or varieties, which are regarded as scarce, and are listed at proportionately high prices, it is generally possible to pick up a copy now and then for a few pence, and this, as in all kinds of collecting, is a great incentive.

Now is the time for the postcard-collector. The Great Moguls are revelling in philatelic luxuries ; microscopic varieties are being unearthed (and made) ; prices, for stamps, are going up to an extent which, to an old collector, is almost incredible ; and many dealers have ceased to import stationery at all. Let the postcard-collector, therefore, seize his opportunity. He will find ample material, a wide field and low prices to enable him to make a good representative collection ; and, if my opinion and experience be worth anything, he will obtain much pleasure and satisfaction from the study of the humble, but useful, postcard.



## British Stamps used Abroad.



**B**RITISH Stamps were used in many of the Colonies and also in South and Central American Republics, etc., before these countries issued stamps of their own. The British stamp, bearing the Maltese postmark, became a stamp from Malta and so on.

From 1852 until the early part of 1860 letters were prepaid in money, and all letters received an impression in red, blue, or green from a hand stamp with the name of the Colony where posted. 1857 was the year when British Stamps were first issued abroad. The first three places abroad to use British Stamps were Malta, Gibraltar, and Constantinople, and for these places postmarks were issued, showing the initial "C" for Constantinople, "G" for Gibraltar, and "M" for Malta.

In 1860 it appears from the postmarks that the authorities decided to have a distinctive mark, consisting of a letter and number in combination for use in the Colonies (fig 1.) and a start was made with AO1. The initials of M and G gave way to No. A25 and A26 C, however, was retained till 1885, when a circular date stamp came into use. The original method does not, however, seem to have been long adhered to, because after fifteen numbers had been allotted to the West Indies, A16 and A17 were given to Post Offices in Great Britain, and it is pretty evident that the numbers were used in rotation indiscriminately as the offices were opened, either at home or abroad. Thus there is no hard and fast rule by which a novice can tell the "used abroad" stamp. It is a matter of study and research. The fact that the postmark consists of a letter and a number is no guide. For instance, C51 is St. Thomas, while C50 is Sale, in Cheshire. Then, again, some places abroad used just plain numbers in the customary bar cancellation, and we have 942 Cyprus, 466 Liverpool. Round date stamps were also used in

conjunction with these hand stamps, and the shapes and sizes varied as they did at the same period in England.

Special obliterations were employed in the Army Post Office in 1854 Crimea, 1885 Egypt, and 1899 British South Africa; the Crimea consisting of a star on either side of a crown, and another with O on either side of a star. A date postmark was also in use. In Egypt only dated postmarks were in use (British Army Post Office). In B. S. A. various dated postmarks were in use.



The following is a list of the postmarks employed in the Colonies and abroad :—

247	Fernando Poo (since 1875).
582	Noguabo, Porto Rico (since 1874).
942	Larnaca, Cyprus.
969	Vikosia, ..
974	Baffo, ..
975	Famagusta, ..
981	Limasol, ..
982	Kyrenia, ..
098	Platres, ..
A01	Kingston, Jamaica.
A02	Antigua.
A03	Demerara.
A04	Berbice.
A05	Bahamas.
A06	British Honduras.
A07	Dominica.
A08	Montserrat.
A09	Nevis.
A10	St. Vincent.
A11	St. Lucia.
A12	St. Kitts.
A13	Tortola.
A14	Tobago.
A15	Grenada.
A18	English Harbour Antigua,
A25	Malta.

A26	Gibraltar.	
A27	Alexandria,	Jamaica.
A28	Annotte Bay,	„
A29	Bath.	„
A30	Black River,	„
A31	Brown's Town,	„
A32	Buff Bay,	„
A33	Capelton,	„
A34	Claremont,	„
A35	Clarendon,	„
A36	Dry Harbour,	„
A37	Duncans,	„
A38	Ewarton,	„
A39	Falmouth,	„
A40	Flint River,	„
A41	Gagle,	„
A42	Golden Spring,	„
A43	Gordon Town,	„
A44	Goshen,	„
A45	Grange Hill,	„
A46	Green Island,	„
A47	Highgate,	„
A48	Hope Bay,	„
A49	Lilliput,	„
A50	Little River,	„
A51	Lucia,	„
A52	Manchioneal,	„
A53	Mandreville,	„
A54	May Hill,	„
A55	Mile Gully,	„
A56	Mongeaune,	„
A57	Montego Bay,	„
A58	Montpelier,	„
A59	Morant Bay,	„
A60	Ocho Rios,	„
A61	Old Harbour,	„
A62	Plaintain Gr. Riv.,	„
A63	Pear Tree Grove,	„
A64	Port Antinio,	„
A65	Port Morant,	„
A66	Port Maria,	„
A67	Port Royal,	„
A68	Porus,	„
A69	Ramble,,	„
A70	Rio Bueno,	„
A71	Rodney Hall,	„
A72	St. David,	„
A73	St. Anne's Bay,	„
A74	Salt Gut,	„
A75	Savannah-la-Mar,	„
A76	Spanish Town,	„
A77	Stewart Town,	„
A78	Vere,	„



- A79 Naval Station till 1871.  
 A80       "       "  
 A81       "       "  
 A82       "       "  
 A83       "       "  
 A84       "       "  
 A85       "       "  
 A86       "       "  
 A87       "       "  
 A88       "       "  
 A91 Virgin Island (in England after 1867).  
 A92 Halifax, Nova Scotia.  
 A99 Sydney, New South Wales.  
 B01 Alexandria, Egypt.  
 B02 Suez.  
 B31 Free Town, Sierra Leone.  
 B32 Buenos Ayres.  
 B53 Mauritius.  
 B56 Hong-Kong.  
 B57       "       "  
 B62       "       "  
 B64 Seychelles.  
 C       Constantinople.  
 C28 Montevideo, Uruguay.  
 C30 Valparaiso, Chili.  
 C35 Panama, Central America.  
 C36 Arica, Peru.  
 C37 Caldera, Chili.  
 C38 Callas, Peru.  
 C39 Cobija or Puerto-de-la-Mar, Bolivia.  
 C40 Coquimbo, Chili.  
 C41 Guayaquil, Ecuador.  
 C42 Islay, Peru.  
 C43 Payta,       "  
 C51 St. Thomas, Danish West Indies.  
 C56 Carthagena or (C65 error), Colombia.  
 C57 Greytown or San Juan del Porte, Nicaragua.  
 C58 Havana, Cuba.  
 C59 Jacmel,       "  
 C60 La Guaica, Venezuela.  
 C61 San Juan, Porto Rico.  
 C62 Santa Martha, Columbia.  
 C63 Tampico, Mexico.  
 C64 Vera Cruz,       "  
 C79 Hong-Kong (before 1871).  
 C81 Bahia, Brazil.  
 C82 Pernambuco, Brazil.  
 C83 Rio de Janeiro,       "  
 C86 Porto Plata, Dominican Rep.  
 C87 St. Domingo,       "  
 C88 St. Jago de Cuba or Santiago, Cuba.  
 D22 Ciudad Bolivar or Angostura, Venezuela.  
 D26 Spanish Mail Packet, St. Thomas.

- D27 Amoy, China.  
D28 Kiung Chow, China.  
D29 Hankow,        "  
D30 Hio-go, Japan.  
D47 Polymedia, Cyprus.  
D48 Head Quarter's Camp, Cyprus.  
D74 Pisco, Peru.  
D87 Iquique, Peru.  
E53 Port au Prince, Hayti.  
E88 Colon or Aspinwall, Colombia.  
F69 Savanilla,        "  
F83 Arroys, Porto Rico.  
F84 Aguadilla,       "  
F85 Mayaguez,       "  
F87 Smyrna, Levant.  
F88 Ponce, Porto Rico.  
G06 Beyrout, Levant.  
G    Gibraltar.  
M    Malta.  
S    Stamboul, Constantinople.



## The Adhesive Revenue Stamps of United Kingdom.

A COMPLETE GUIDE TO STAMPS ISSUED  
SINCE THE REIGN OF KING EDWARD VII.

BY CHAS. NISSEN.



AS soon as any values of the different departments have the Victorian series of Revenue stamps exhausted, a supply of King's Head Stamps are issued. A new watermark is now being used for the shilling values, watermarked I.R., signifying Inland Revenue.

The stamps are printed from what is known as the "un-appropriated" dies, leaving the head of King Edward VII. and the value in English currency without any inscription denoting their use, but a blank tablet provided to receive the overprint of the particular service in which they are to be used, type. There are three principal designs. All stamps are surface printed by Messrs. De la Rue Co., from steel-faced electro-types.

These stamps were overprinted for the following purposes in various colours:—Civil Service, Companies' Registration, Companies Winding Up, Consular Service, Contract Note, District Audit, Estate Duty, Foreign Bill, House of Lords, Judicature Fees, Land Registry, Police Courts, Probate, Public Records, Isle of Man, Law Courts, Register House of Scotland, Bankruptcy (Ireland), County Courts (Ireland), Dog Licence, Judicature (Ireland), Land Commission (Ireland), Petty Sessions, Records (Ireland), Registration of Deeds (Ireland), Registration of Title Insurance Fund (Ireland), Registration of Title (Ireland).

All the pence values are printed in lilac, and watermark an Orb; all the shilling values are printed in green, and watermark I.R.; and all the pound values are printed in lilac, and which are just twice in size that of the pence stamps, with watermark two Orbs. The values run from 1d. upwards; so far the highest value issued is £10. All stamps of King Edward series are perf. 14.

**GREAT BRITAIN.****Bankruptcy.**

1902. Perf. 14.

- |     |      |                       |       |
|-----|------|-----------------------|-------|
| 1.  | 1d   | lilac and brown, wmk. | Orb.  |
| 2.  | 4d   | "                     | "     |
| 3.  | 6d   | "                     | "     |
| 4.  | 8d   | "                     | "     |
| 5.  | 1/-  | green and brown, wmk. | I.R.  |
| 6.  | 1/6  | "                     | "     |
| 7.  | 2/-  | "                     | "     |
| 8.  | 2/6  | "                     | "     |
| 9.  | 5/-  | "                     | "     |
| 10. | 10/- | "                     | "     |
| 11. | £1   | lilac and brown, wmk. | Orbs. |
| 12. | £2   | "                     | "     |
| 13. | £5   | "                     | "     |

**Civil Service.**

1902. Perf. 14.

- |     |      |                       |       |
|-----|------|-----------------------|-------|
| 14. | 1/-  | green and green, wmk. | I.R.  |
| 15. | 1/6  | "                     | "     |
| 16. | 2/6  | "                     | "     |
| 17. | 5/-  | "                     | "     |
| 18. | 10/- | "                     | "     |
| 19. | £1   | lilac and green, wmk. | Orbs. |
| 20. | £5   | "                     | "     |

**Companies' Registration.**

1902. Perf. 14.

- |     |     |                       |       |
|-----|-----|-----------------------|-------|
| 21. | 4d  | lilac and olive, wmk. | Orb.  |
| 22. | 6d  | "                     | "     |
| 23. | 1/- | green and olive, wmk. | I.R.  |
| 24. | 5/- | "                     | "     |
| 25. | £1  | lilac and olive, wmk. | Orbs. |

**Companies Winding Up.**

1902. Perf. 14.

- |     |      |                        |       |
|-----|------|------------------------|-------|
| 26. | 1d   | lilac and violet, wmk. | Orb.  |
| 27. | 2d   | "                      | "     |
| 28. | 4d   | "                      | "     |
| 29. | 1/-  | green and violet, wmk. | I.R.  |
| 30. | 1/6  | "                      | "     |
| 31. | 2/-  | "                      | "     |
| 32. | 2/6  | "                      | "     |
| 33. | 5/-  | "                      | "     |
| 34. | 10/- | "                      | "     |
| 35. | £1   | lilac, wmk.            | Orbs. |
| 36. | £2   | "                      | "     |
| 37. | £5   | "                      | "     |

**Consular Service.**

1902. Perf. 14.

38. 1d lilac and black, wmk. Orb.  
 39. 3d ,, brown, ,,  
 40. 6d ,, blue green ,,  
 41. 1/- green and black, wmk. I.R.  
 42. 2/- ,, blue, ,,  
 43. 2/6 ,, brown, ,,  
 44. 5/- ,, violet, ,,  
 45. 10/- ,, red, ,,  
 46. £1 lilac and black, wmk. Orbs.  
 47. £2 ,, blue, ,,  
 48. £3 ,, brown, ,,  
 49. £5 ,, green, ,,

*Overprinted.*

50. 25 cents on 3d, lilac and brown.  
 51. 50 ,, on 6d, ,, blue green.  
 52. 1 dollar on 1/-, green and black.  
 53. 2 ,, on 2/-, ,, blue.  
 54. 2½ ,, on 2/6, ,, brown  
 55. 5 ,, on £1, lilac and black.  
 56. 6 ,, on £2, ,, blue.  
 57. 10 ,, on £3, ,, brown.  
 58. 20 ,, on £5, ,, blue green.  
 59. 50 ,, on £5, ,, violet.  
 60. 50 ,, on £10, ,, violet.

**Contract Note.**

1902-5. Perf. 14.

61. 6d lilac and black, wmk. Orb.  
 62. 1/- ,, ,, wmk. I.R.  
 63. 2/- ,, ,, ,,  
 64. 4/- ,, ,, ,,  
 65. 5/ ,, ,, ,,  
 66. 10/- ,, ,, ,,

**District Audit.**

1902. Perf. 14.

67. 5/- green and blue, wmk. I.R.  
 68. 10/- ,, ,, ,,  
 69. £1 lilac and blue, wmk. Orbs.  
 70. £2 ,, ,, ,,  
 71. £5 ,, ,, ,,

**Estate Duty.**

1902. Perf. 14.

72. £1 10/- lilac and blue, wmk. Orbs.  
 73. £2 10/- ,, brown, ,,

**Foreign Bill.**

1902. Perf. 14.

74.	1d	lilac and purple, wmk. Orb.	
75.	2d	" "	" "
76.	3d	" "	" "
77.	6d	" "	" "
78.	9d	" "	" "
79.	1/-	green and blue green, wmk. I.R.	
80.	2/-	" "	" "
81.	3/-	" "	" "
82.	4/-	" "	" "
83.	5/-	" "	" "
84.	10/-	" "	" "
85.	15/-	" "	" "
86.	£1	lilac and purple, wmk. Orbs.	
87.	£1 10/-	" "	" "
88.	£2	" "	" "
89.	£2 10/-	" "	" "
90.	£5	" "	" "

**House of Lords.**

1902-3. Perf. 14.

91.	5/-	green and red, wmk. I.R.	
92.	10/-	" "	" "
93.	£1	lilac " wmk. Orbs.	
94.	£1 10/-	" "	" "
95.	£2	" "	" "
96.	£2 10/-	" "	" "
97.	£10	" "	" "

**Judicature Fees.**

1902. Perf. 14.

98.	1d	lilac and green, wmk. Orb.	
99.	2d	" "	" "
100.	3d	" "	" "
101.	4d	" "	" "
102.	6d	" "	" "
103.	1/-	green and purple, wmk. I.R.	
104.	1/6	" "	" "
105.	2/-	" "	" "
106.	2/6	" "	" "
107.	3/-	" "	" "
108.	5/-	" "	" "
109.	10/-	" "	" "
110.	15/-	" "	" "
111.	£1	lilac and green, wmk. Orbs.	
112.	£2	" "	" "
113.	£5	" "	" "

**Land Registry.**

1902. Perf. 14.

114. 1d lilac and green, wmk. Orb.  
 115. 3d " " "  
 116. 6d " " "  
 117. 1/- green and purple, wmk. I.R.  
 118. 2/- " " "  
 119. 2/6 " " "  
 120. 5/- " " "  
 121. 10/- " " "  
 122. £1 lilac and green, wmk. Orbs.  
 123. £5 " " "

**Police Courts.**

1902. Perf. 14.

124. 1/- green and orange red, wmk. I.R.  
 125. 2/- " " "  
 126. 2/6 " " "  
 127. 5/- " " "  
 128. 10/- " " "

**Probate.**

1902. Perf. 14.

129. £1 lilac and black, wmk. Orb.

**Public Records.**

1902. Perf. 14.

130. 6d lilac and brown red, wmk. Orbs.  
 131. 1/- green and brown red, wmk. I. R.  
 132. 5/- " " "  
 133. £1 lilac and brown red, wmk. Orbs.

**Isle of Man.**

1904. Perf.

134. 2d lilac and black, wmk. Orb.  
 135. 4d " " "  
 136. 6d " " "  
 137. 1/- green and black, wmk. I.R.  
 138. 2/- " " "  
 139. 2/6 " " "  
 140. 5/- " " "  
 141. 10/- " " "  
 142. £1 lilac and black, wmk. Orbs.

**SCOTLAND.****Law Courts.**

1902. Perf. 14.

- |      |      |                       |            |
|------|------|-----------------------|------------|
| 143. | 1d   | lilac and green, wmk. | Orb.       |
| 144. | 4d   | "                     | "          |
| 145. | 6d   | "                     | "          |
| 146. | 1/-  | green                 | wmk. I.R.  |
| 147. | 2/6  | "                     | "          |
| 148. | 5/-  | "                     | "          |
| 149. | 10/- | "                     | "          |
| 150. | £1   | lilac                 | wmk. Orbs. |
| 151. | £5   | "                     | "          |

**Register House, Scotland**

1902. Perf. 14.

- |      |      |                      |       |
|------|------|----------------------|-------|
| 152. | 1d   | black and blue, wmk. | Orb.  |
| 153. | 3d   | "                    | "     |
| 154. | 6d   | "                    | "     |
| 155. | 1/-  | green and blue, wmk. | I.R.  |
| 156. | 2/6  | "                    | "     |
| 157. | 5/-  | "                    | "     |
| 158. | 10/- | "                    | "     |
| 159. | £1   | lilac and blue, wmk. | Orbs. |
| 160. | £5   | "                    | "     |

**IRELAND.****Bankruptcy.**

1902. Perf. 14

- |      |      |                            |       |
|------|------|----------------------------|-------|
| 161. | 5/-  | green and green, wmk.      | I.R.  |
| 162. | 10/- | "                          | "     |
| 163. | £1   | lilac and blue green, wmk. | Orbs. |
| 164. | £2   | "                          | "     |
| 165. | £5   | "                          | "     |

**County Courts.**

1902. Perf. 14.

- |      |      |                         |            |
|------|------|-------------------------|------------|
| 166. | 1d   | lilac and carmine, wmk. | Orb.       |
| 167. | 2d   | "                       | "          |
| 168. | 3d   | "                       | "          |
| 169. | 6d   | "                       | "          |
| 170. | 1/-  | green and carmine, wmk. | I.R.       |
| 171. | 1/6  | "                       | "          |
| 172. | 2/-  | "                       | "          |
| 173. | 2/6  | "                       | "          |
| 174. | 5/-  | "                       | "          |
| 175. | 10/- | "                       | "          |
| 176. | £1   | lilac                   | wmk. Orbs. |



**Dog Licence.**

Petty Sessions stamps overprinted.

For Dog Licence in two lines in black.

177. 6d green and sage green, wmk. Orb.

**Judicature.**

1902. Perf. 14.

178. 1d lilac and carmine, wmk. Orb.  
 179. 3d " " "  
 180. 4d " " "  
 181. 6d " " "  
 182. 1/- green " wmk. I.R.  
 183. 1/6 " " "  
 184. 2/- " " "  
 185. 2/6 " " "  
 186. 5/- " " "  
 187. 10/- " " "  
 188. £1 lilac " wmk. Orbs.

**Land Commission.**

1902. Perf. 14.

189. 6d lilac and blue, wmk. Orb.  
 190. 1/- green " wmk. I.R.  
 191. 5/- " " "

**Petty Sessions.**

1902. Perf. 14.

192. 6d rose and brown, wmk. Orb.  
 193. 6d green and sage green, wmk. Orb.

**Records.**

1902. Perf. 14.

194. 6d lilac and brown, wmk. Orb.  
 195. 1/- green " "  
 196. 5/- " " "

**Registration of Deeds.**

1902. Perf. 14.

197. 3d lilac and green, wmk. Orb.  
 198. 4d " " "  
 199. 6d " " "  
 200. 1/- green " wmk. I.R.  
 201. 2/- " " "  
 202. 2/6 " " "  
 203. 5/- " " "  
 204. 10/- " " "  
 205. £1 lilac " wmk. Orbs.

**Registration of Title.**

1902. Perf. 14.

206.	3d	lilac and purple,	wmk.	Orb.
207.	4d	„	„	„
208.	6d	„	„	„
209.	1/-	green	„	wmk. I. R.
210.	2/6	„	„	„
211.	5/-	„	„	„
212.	10/-	„	„	„

**Registration of Title Insurance Fund.**

1902. Perf. 14.

213.	1/-	green and dark purple,	wmk.	I. R.
214.	2/-	„	„	„
215.	10/-	„	„	„



## British Stamps on Blue Paper.

FROM THE ORIGINAL MANUSCRIPT BY T. PEACOCK.\*

**I**T is in a way amusing to note the discussions of the Philatelists upon this fact of the blueness of the paper. First, as regards the old Penny Post, and, secondly, in regard to the paper of the type printed stamps. The two kinds of blueness, if I may say so, were, as regards cause, entirely dissimilar. That in the old Penny Post arose unquestionably from an ingredient in the ink acting upon the ingredients in the texture of the paper. The latter being sodden with water when the imprint was taken readily allowed any ingredient in the ink to disseminate itself through the wet pulp, and the blueness consequently showed at the back of the sheet through the transparent gum, and around the edges of the stamps, on the face of the impression. The red colour of the old Penny Post consisted principally of an oxide of iron, and I think the blue stain had connection with this and some acidulous fermentation of the size in the paper.

As regards some of the surface stamps the paper had, as Mr. Westoby states, prussiate of potass mixed with its pulp, and the blueness was sometimes in some degree caused by an excess of the chemical. I have observed that the under side of the paper was bluer than the upper face, which showed the precipitation of some matter heavier than the pulp itself. But there were also occasionally observed blue spots in the paper, which, it was generally believed, arose from the presence of minute particles of iron in the pulp, and was connected with the interaction of the prussiate of potass and the state size.

After our worrying the paper maker sufficiently these things eventually improved.

---

\*Late Principal of the Stamping Department, Somerset House.

## King Edward Marginal Control Letters of Great Britain.

---

### A REFERENCE LIST AND GUIDE TO VALUES.

**W**HEN the King Edward VII. series of British Stamps were issued in 1902, a new series of marginal "control" or "contract" lettering also commenced, beginning with letter A in  $\frac{1}{2}$ d. and 1d. values, in a similar manner to the Queen's Head issue, printed in the colour of the stamp on the lower right or left corner of sheet below the continuous outer line (Fig. 1). New plates were also brought into use in 1903, with a new system of broken outer lines round the pane (see Fig. 2). Another new system took place in 1904. A figure was placed after the "control" letter (see Illustration No. 2), which stands for the year when particular plates were put to press.

I give herewith a complete list of all those that have been issued from 1902 to end of 1907, with their marked values for unused copies in strips of three, and for single copies. The "controls" at the right are found below the eleventh stamp in the bottom row of the plate, or to the left below the second stamp in the bottom row; the margins are found imperf. or perf. through.



**B**

(Fig. 1).



**E5**

(Fig. 2).

**Continuous Outer Line. (Fig. 1).**

					Strips of three.	Single copies.
					S. D.	S. D.
1.	$\frac{1}{2}$ d dark green,	A	at the right hand corner of sheet,	1902	1 0	0 3
2.	"	B	" " " "	"	1 0	0 3
3.	"	C	left " " "	1903	2 0	0 9
4.	"	C4	" " " "	1904	1 6	1 0
5.	"	D4	" " " "	"	2 0	1 6
6.	$\frac{1}{2}$ d yellow green	D4	" " " "	"	2 0	1 6

**Broken Outer Lines. (Fig. 2).**

7.	$\frac{1}{2}$ d dark green,	B	at the right hand corner of sheet,	1903	5 6	3 6
8.	"	C	" " " "	"	20 0	—
9.	"	C	left " " "	1904	2 6	0 9
10.	"	C4	right " " "	"	20 0	—
11.	"	C4	left " " "	"	1 6	0 9
12.	"	D4	" " " "	"	2 0	1 6
13.	$\frac{1}{2}$ d yellowgreen,	D4	" " " "	"	1 0	0 6
14.	"	D5	" " " "	1905	0 9	0 6
15.	"	E5	" " " "	"	0 6	0 3
16.	"	E6	" " " "	1906	0 6	0 3
17.	"	F6	" " " "	"	0 4	0 2
18.	"	F7	" " " "	1907	0 4	0 2
19.	"	G7	" " " "	"	0 3	0 1

**Continuous Outer Line. (Fig. 1).**

20.	1d carmine,	A	at the right hand corner of sheet,	1902	1 3	0 4
21.	"	B	" " " "	"	1 6	0 4
22.	"	C	" " " "	1903	1 6	1 0
23.	"	C4	" " " "	1904	1 6	0 6
24.	"	D4	" " " "	"	2 0	1 6
25.	"	D5	" " " "	1905	5 0	4 0

**Broken Outer Lines. (Fig. 2).**

26.	1d carmine,	C	at the right hand corner of sheet,	1903	3 6	3 0
27.	"	C4	" " " "	1904	1 6	0 6
28.	"	D4	" " " "	"	1 0	0 6
29.	"	D5	" " " "	1905	1 0	0 9
30.	"	E5	" " " "	"	0 6	0 4
31.	"	E6	" " " "	1906	0 6	0 3
32.	"	F6	" " " "	"	0 6	0 3
33.	"	F7	" " " "	1907	1 6	0 3
34.	"	G7	" " " "	"	0 5	0 2

## The Philatelic Literary Index for 1907.

*The Abbreviations used for the Titles of Journals are as follows:—*

A.S.M.C.,	-	-	-	Alfred Smith & Son's Monthly Circular.
E.W.S.N.,	-	-	-	Ewen's Weekly Stamp News.
G.S.W.,	-	-	-	Gibbons' Stamp Weekly.
L.P.,	-	-	-	London Philatelist.
M.P.J.,	-	-	-	Morley's Philatelic Journal.
P.R.,	-	-	-	Philatelic Record.
P.S.,	-	-	-	Postage Stamp.
P.J.G.B.,	-	-	-	Philatelic Journal of Great Britain.
S.G.M.J.,	-	-	-	Stanley Gibbons' Monthly Journal.
S.C.A.,	-	-	-	Stamp Collectors' Annual.
S.C.F.,	-	-	-	Stamp Collectors' Fortnightly.
S.C.,	-	-	-	Stamp Collector.
W.E.P.,	-	-	-	West End Philatelist.

### EXPLANATORY NOTE.

In the majority of cases the items in the following compilation are indexed by means of the number of volume (in Roman numerals) and the number of page (ordinary numerals). Thus, "P.R., XXVIII., 11" means page 11 of the 28th volume of the "Philatelic Record." In certain instances, however, there is no division into volumes—this applies notably to "Alfred Smith's Monthly Circular," "Ewen's Weekly Stamp News," and "Postage Stamp." In the former case we give the number of the issue and the page; in the latter case the page number only is given.

Abroad, British Stamps Used, by I. J. Bernstein and Charles Nissen, G.S.W., VI., 216, 232, 248, 262, 277, 293, 309, 326, 344, 358, 371, 392.

Abroad, English Stamps Used, by H. F. Johnson, P.J.G.B., XVII., 116, 142, 158, 202.

Abyssinia, by J. W. H. Heslop, G.S.W., VI., 348.

Ackerman, Ernest R. ("Well-known Philatelists"), P.J.G.B., XVII., 21.

Adhesive Stamp, is it doomed? by Harry J. Maguire, G.S.W., V., 204.

Aitutaki, The Postage Stamps of, by Bertram W. H. Poole, W.E.P., IV., 19, 35.

- American Philatelic Societies, S.C.A., IV., 99.  
 An easy Method to Copy Stamps (reprinted), by J. Leibbinger, E.W.S.N.,  
 1409, 1419.  
 Archer's Perforations, by Plain Archer, P.R., XXIX., 12.  
 Annual, Stamp Collector's (Reviewed), L.P., XVI., 74; M.P.J., VIII.,  
 30; P.R., XXIX., 68; P.J.G.B., XVII., 60; S.G.M.J., XVII.,  
 174; S.C.F., XIII., 6; S.C., XI., 45.  
 Auction Catalogues at Home and Abroad, by Fred J. Melville, G.S.W.,  
 V., 35.  
 Australian Punctured Officials. E.W.S.N. (Reprinted). 1451.  
 Australian Commonwealth, Uniform Stamps (Reprinted), E.W.S.N., 1341,  
 1350, 1365, 1417, 1425, 1453, 1474, 1462, 1467; L.P., XVI., 283;  
 P.S., 176.  
 Before and After Philately, by R. Halliday, S.C.F., XIII., 2.  
 Bermuda: Queen's Head Die, by B. W. H. Poole, B.S., I., 54.  
 Borneo: Happenings in Philately in the British West Indies, by H. H.  
 Bandholtz, Brig.-Gen., U.S.A., E.W.S.N., 1471.  
 Bowers' Collection and Others, in America, The, by Mr. Warren Colson,  
 S.C.F., XIII., 177.  
 Brazil. A Chat about the Later Stamps of, by Percy C. Bishop, S.C.F.,  
 XIII., 65.  
 Breitfus Collection, Notes on the, by Charles J. Phillips, G.S.W., VI.,  
 88, 102, 114, 131, 148, 183, 214, 230; L.P., XVI., 160.  
 Breitfus, Frederick, P.R., XXIX., 4, 23.  
 Board of Trade Officials, The, by I. J. Bernstein, S.C.A., IV., 20.  
 British Bechuanaland, by B. W. H. Poole, W.E.P., IV., 2.  
 British Central Africa, by Bertram W. H. Poole, W.E.P., IV., 52.  
 British Colonial Stamps: Methods of Production, P.S., 24, 38.  
 British Exchange Clubs, S.C.A., IV., 95.  
 British Guiana, Bisected Stamps of, by E. A. V. Abraham (Reprinted),  
 S.C.F., XII., 209.  
 British Guiana, Philatelic Exhibition, P.R., XXIX., 138.  
 British India, The Introduction of Postage Stamps in (Reprinted), S.C.F.,  
 XIII., 192.  
 British North Borneo: Notes regarding the 1886-7 Issue, by Bertram W.  
 H. Poole, S.G.M.J., XVII., 143, 190, 212.  
 British Patent Medicine Stamps, M.P.J., VIII., 1, 9, 17, 25, 33, 41, 49,  
 57, 65, 73.  
 British "Paid" Stamps, The, by Rev. P. E. Raynor, S.C., XI., 18.  
 British Possessions that might issue Stamps, by W. H. J. Robertson,  
 S.C.F., XIII., 33.  
 British Post Office in the Levant, The, by I. J. Bernstein, P.R., XXIX.,  
 55, 70.  
 British Railway Stamps, M.P.J., VIII., 14, 39, 47, 78.  
 British Stamps used Abroad (Reprinted), by I. J. Bernstein, S.C.F., XIII.,  
 115.  
 British Stamps used Abroad, by I. J. Bernstein and Charles Nissen,  
 G.S.W., VI., 216, 232, 248, 262, 277, 293, 309, 326, 344, 358, 371,  
 392.  
 Brighton Stamp Case, The, L.P., XVI., 187, 209, 250, 285, P.R., XXIX.,  
 161; S.C.F., XIII., 97, 105, 110, 119, 150, 171; G.S.W., 409.  
 Brunei, P.J.G.B., XVII., 98.  
 Brunei Surcharges, L.P., XVI., 168

- Burton, J. Read ("Well-known Philatelist"), P.J.G.B., XVII., 1.  
 Canada, Notes on the Stamps of, by M. H. Horsley, L.P., XVI., 85.  
 Canada, The King's Head Issue of, E.W.S.N., 1316.  
 Canadians, Some Random Notes on, by Wallaby, S.C.F., XIII., 8.  
 Campbell, G. Leonel, P.R., XXIX.  
 Cape of Good Hope: Notes on the 1861 Provisional, by M. P. Castle, L.P., XVI., 160, 182.  
 Cardiff Philatelic Exhibition, The S.C.F., XIII., 185.  
 Cayman Islands, The Stamps of, by B. W. H. Poole, W.E.P., III., 175.  
 Ceylon, Notes on, by Baron Percy De Worms, L.P., XVI., 203, 224, 244.  
 Ceylon, The Stamps of, by O. K. Trechmann, S.C., XI., 58.  
 Chalmers, Frank ("Well-known Philatelist"), P.J.G.B., XVII., 137.  
 Chili. The Multada, or Postage-Due, Stamps of, by C. A. Howes, S.C.F., XIII., 141.  
 China: The Sheets of the First Issue. by Edward J. Nankivell, S.G.M.J., XVII., 253.  
 College Stamps of Oxford and Cambridge. by L. Savournin, S.C.A., VI., 45.  
 Colonial Societies, British, S.C.A., IV., 98.  
 Commemorative Sticky-Backs. by W. Ward, G.S.W., 406.  
 Control Surcharges, W.E.P., III., 194.  
 Countries of the World, The, by E. J. Nankivell, G.S.W., in Alphabetical Progressions. V., 1, 17, 33, 49, 81, 113, 133, 149, 165, 181, 213, 229, 245, 261, 277, 293, 309, 325, 341, 357, 377, 397, 413, by Percy Barnsdall; VI., in all issues from 21st Sept. to 28th Dec.  
 Cyprus: Papers for Moderate Specialists, P.J.G.B., XVII., 54.  
 Dangerous Forgeries of Portuguese Colonials (Reprinted), S.C., XI., 122; S.C.F., XIII., 133.  
 Danish West Indies, The Stamps of, by Wm. E. Ault, S.C.F., XIII., 94, 114, 124.  
 Danish West Indies Postage Due Stamps, Varieties of the, S.C.F., XIII., 140.  
 Denmark, The Arms of, P.S., 179.  
 Denmark, and the Danish Colonies, Postal Issues of, by L. Hanciau, S.G.M.J., XVII., 139, 205, 247; XVIII., 54, 108.  
 Djurling, Hilmer, P.R., XXIX., 52.  
 Drama for Stamp Collectors, The, S.C.F., XIII., 18.  
 Duerst, Geo. B., P.R., XXIX., 26.  
 "Earthquake" Stamps, The, by "Uncle Tom," G.S.W., VI., 315.  
 English Stamps Used Abroad, by H. F. Johnson, Hon. Sec. J.P.S., P.J.G.B., XVII., 116, 142, 158, 202.  
 Ewen v. Federal Stamp Co., E.W.S.N., 1302; v. Judge Philbrick, 1350.  
 Exhibition, British Guiana Philatelic S.C.F., XIII., 89; P.R., XXIX., 138; Leicester, L.P., XVI., 169; P.R., XXIX., 219; French Exhibition, L.P., XVI., 141; G.S.W., 398; P.R., XXIX., 235; S.C.F., XIII., 79, 86.  
 Exhibition, London (Junior Society), G.S.W., VI., 246, 372; M.P.J., VIII., 77; L.P., XVI., 215, 263; P.J.G.B., XVII., 169; P.R., XXIX., 207; S.C.F., XIII., 93, 126; S.G.M.J., XVIII., 99; S.C., XI., 142.  
 First Town-Post of Paris and London (Reprinted), by B. T. K. Smith, A.S.M.C., 73.



- First Issue of Victoria, The, by J. Bornefeld, S.G.M.J., XVII., 209.
- Fiscals, New Issues of, M.P.J., VIII., 8, 16, 25, 31, 40, 48, 56, 64, 72, 80.
- Fiscal Stamps, Notes on, by A. B. Kay; S.C.F., XII., 213; XIII., 23, 63.
- Flaws by Wallaby, P.J.G.B., XVII., 51.
- Forgeries of the "Cantonal" Stamps of Switzerland, P.R., XXIX., 29, 58, 77, 93, 111, 152, 176, 197.
- Forgeries Dangerous, of Portuguese Colonials (Reprinted), S.C. XI., 122.
- Forgeries and Reprints, by Rev. Robert B. Earée, G.S.W., V., 53, 70, 103, 119, 156, 187, 207, 220, 251, 282, 300, 314, 332, 346, 363, 381; VI., 401, 419.
- Fortunes in Stamps, W.E.P., IV., 7.
- France during the Franco-Prussian War, G.S.W., VI., 363.
- France in the "Sower" Types, and their Different Retouches Stamps of, by Franz Reichenheim, L.P., XVI., 276.
- "Franklin" Carrier Stamps of the United States (Reprinted), S.C.F., XIII., 129.
- French Postage Stamps, The History of (Reprinted), by B. T. K. Smith, A.S.M.C., 65.
- French Tête-bêche Stamps (Reprinted), P.J.G.B., XVII., 98.
- Fugitive Colours, S.G.M.J., XVIII., 22.
- Gambia: Papers for Moderate Specialists, P.J.G.B., XVII., 78.
- Garibaldi's Newspaper Stamps for Naples, G.S.W., VI., 217.
- Garson, D. S. ("Well-known Philatelists"), P.J.G.B., XVII., 65.
- Gold Coast: Papers for Moderate Specialists, P.J.G.B., XVII., 32.
- Grand Canary Island; Notes on the Deficiency of Stamps, January-February, 1907; L.P., XVI., 67.
- Gray, William Martello, F.C.A., P.R., XXIX., 170.
- Great Britain: "Appropriated" Impressed Duty Stamps, by L. W. Fulcher, M.P.J., VIII., 6, 14, 22, 37, 45, 53, 61, 70, 78.
- Great Britain: The Board of Trade Officials, I. J. Bernstein, S.C.A., IV., 20.
- Great Britain: Cheque Dies, E.W.S.N., 1285, 1297, 1473.
- Great Britain: Control Letters, E.W.S.N., 1277, 1428.
- Great Britain: The "Cut Out" Postage Stamps, A Reference List and Guide to Values, by Charles Nissen, S.C.A., IV., 68.
- Great Britain: Corner Lettering of 1840 and 1841-54, by H. S. Hodson, P.R., XXIX., 118, 133.
- Great Britain: Double Perforations (roulette), E.W.S.N., 1329, 1333, 1341, 1353, 1361, 1377, 1469.
- Great Britain: Earliest Dates of Use, E.W.S.N., 1265, 1274, 1285, 1297, 1309, 1341, 1361, 1377, 1389.
- Great Britain: Envelope Stamps and Dies, E.W.S.N., 1273, 1285, 1289, 1293, 1297, 1309, 1353, 1365, 1417, 1428, 1433, 1437, 1469.
- Great Britain: Private overprints, E.W.S.N., 1265, 1274, 1285, 1315.
- Great Britain: Newspaper Tax Stamps, by Walter Morley, M.P.J., VIII., 12, 19, 27, 35, 43, 52, 67, 75.
- Great Britain: Notes for Collectors, by "Plain Anchor," G.S.W., V., 67, 84, 97, 115, 136, 152, 169, 183, 198, 216, 234, 250, 284.
- Great Britain: A Note on Check Letters, by C. F. Dendy Marshall, B.A., L.P., XVI., 38.
- Great Britain: Provisional Note on the History of the 1d. Stamp, 1840, by The Earl of Crawford, L.P., XVI., 248.

- Great Britain: A Revised Catalogue of Private Overprints, by Bertram M'Gowan, E.W.S.N., 1315.
- Great Britain: Railway Stamps, E.W.S.N., 1265, 1274, 1285, 1297, 1309, 1325, 1329, 1333, 1389, 1421, 1425, 1428, 1433, 1453, 1461, 1469.
- Great Britain: Stamps used Abroad. G.S.W., VI., In Europe and Levant, 248, 262, 278; In British West Indies, 293, 309, 326, 344, 358, 371; In South and Central American Republics, 392.
- Great Britain Telegraphs: New Discoveries, S.G.M.J., XVIII., 75, 124; M.P.J., VIII., 24.
- Great Britain: Wmks. inverted, E.W.S.N., 1324, 1329, 1337, 1353, 1361.
- Greece, Notes on Mr. T. W. Morris' Articles on the Stamps of, by P. L. Pemberton, P.J.G.B., XVII., 206, 209.
- Greece, The Stamps of, by T. W. Morris, S.C., XI., 2, 22, 37, 50, 71, 93, 99, 114; by Pompeo Fabri, S.C., XI., 127, 134, 150.
- Grenada: Papers for Moderate Specialists, P.J.G.B., XVII., 104.
- Griqualand West, A Note on. P.R., XXIX., 33.
- Guinea, Stamps of British New. by B. W. H. Poole, W.E.P., III., 191.
- Handbook of Reprints (Reviewed), L.P., XVI., 171.
- Hard U.S. Problems Made Easy, by Eustace B. Power, G.S.W., VI., 250, 329.
- Hayti, Notes on the Nineteenth Century Stamps of, by W. Buckland Edwards, B.Sc., S.C.F., XIII., 3.
- Hints to Beginners; How to Collect, by E. J. Nankivell, P.S., I., 9, 87.
- Hinton, T. H., P.R., XXIX., 150.
- Historical Philately: Garibaldi's Newspaper Stamps for Naples, by Norman Thornton, G.S.W., VI., 217; France during the Franco-Prussian War, 363.
- Histoire des Timbres-Poste Francais; by Arthur Maury (Reviewed), P.R., XXIX., 179.
- History of French Postage Stamps, The (Reprinted), by B. T. K. Smith, A.S.M.C., 65.
- History of the Worcester Postage Stamps, by E. F. Coffin, B.A., S.G.M.J., XVIII., 138.
- How to Collect Postage Stamps, by B. K. Smith (Reviewed), S.C.F., XIII., 155; P.J.G.B., XVII., 210; S.G.M.J., XVIII., 101; L.P., XVI., 234; P.R., XXIX., 207.
- How Current Stamps are Printed, by the Editor, W.E.P., IV., 118.
- How Old Stamps Feed Orphans, S.C.F., XIII., 18.
- How We Fixed Up Our Season's Programme, S.C.F., XIII., 134.
- Hutson, Guybon ("Well-known Philatelists"), XVII., 93.
- Illustration of a Page of Mauritius; from the Collection of H.R.H. The Prince of Wales, S.C.A., IV.
- Imitation of the Stamps of Japan, by L. Cézard; translated by J. Corner-Spokes (Reprinted), S.C.F., XIII., 113, 121, 127, 142, 149, 154, 165; by A. Montader, S.C.F., XIII., 189.
- Impending Colour Changes, by W. E. Wilkes, S.C.F., XIII., 103.
- Index, The Philatelic Literary, for 1906, by Percy C. Bishop, S.C.A., IV., 72.
- India: Papers for Moderate Specialists, P.J.G.B., XVII., 10.

- India, The Postage and Telegraph Stamps of (Reviewed); Part I., Postage Stamps, by L. S. R. Hausburg; Part II., Telegraph Stamps, by C. Stewart Wilson and C. F. S. Crofton; L. P., XVI., 232; S.G.M.J., XVIII., 45.
- Indian Philatelic Exhibition, L. P., XVI., 192; S.C.F., XIII., 80.
- International Reply Postage. Coupons for, by Frank Phillips, G.S.W., VI., 202.
- International Stamp Advertiser, S.C.F., XIII., 123, 136.
- Invention of the Perforating Machine in its application to Postage Stamps, The, by T. Martin Wears, S.C.F., XIII., 135.
- Ionian Islands, The Stamps of the United States of the, by E. D. Bacon, L. P., XVI., 60.
- Italy, and the Italian Colonies, Stamps of, by L. Hanciau, S.G.M.J., XVII., 185, 223; XVII., 37, 81, 128.
- Japan, Concerning the Postage Stamps of, by A. M. Tracey Woodward, S.C.F., XIII., 70.
- Japan, Imitation of the Stamps of, by L. Cézard; translated by J. Corner-Spokes (Reprinted). S.C.F., XIII., 113, 121, 127, 142, 149, 154, 165; by A. Montader, S.C.F., XIII., 189.
- Jones, B. Gordon, P.R., XXIX., 215.
- Keyser, Consul Sixten, P.R., XXIX., 100.
- King's Head Issue of Canada, The, E.W.S.N., 1316.
- Labuan Stamps (Reprinted), G.S.W., VI., 298.
- "La Guaira," Stamps of, by B. K. Smith, A.S.M.C., 33, 49, 57.
- Leeward Islands, Postage Stamps of the, by B. W. H. Poole, S.C.F., XIII., 41, 49, 57.
- Leeward Islands' Stamps, by Paul Howard, G.S.W., VI., 314.
- Leicester Philatelic Exhibition, L. P., XVI., 252; P.R., 219; S.C.F., 164; P.S., 130.
- Libraries, On Philatelic, by B. T. K. Smith; A.S.M.C., 25.
- Library, A Philatelic, by B. W. H. Poole, G.S.W., VI., 22, 38, 51; P.R., XXIX., 120, 156, 172.
- Lilac, Mauve, or Purple? S.C., XI., 121.
- Line Engraved v. Surface Printed Stamps, by W., P.J.G.B., XVII., 193.
- Local Post of Paris under Louis XIV., The, S.G.M.J., XVII., 251; XVIII., 60, 90.
- Lowden v. Ewen, P.J.G.B., XVII., 30; P.R., XXIX., 35; G.S.W., V., 127; S.C.F., XIII., 229, 223; E.W.S.N., 1290, 1314.
- Luxemburg, Reprints of the First Issue of, L. P., XVI., 11; S.C.F., XIII., 73.
- Mahé Pierre: My Souvenirs, Reminiscences of a Veteran by, S.G.M.J., XVII., 194, 257.
- Malta (Papers for Moderate Specialists), P.J.G.B., XVII., 125.
- Manufacture of British Colonial Stamps, The, S.C.F., XIII., 78.
- Map Stamps, by the Editor, W.E.P., IV., 69.
- Marginal Varieties, by B. W. H. Poole, P.S., I., 59, 71, 85, 103, 117, 128, 141, 154, 166, 175.
- Market in King's Head Colonials, Watermarked Single C.A., by J. W. H. H., S.C.F., XII., 221, XIII., 7.
- Marking of Forged Stamps, The, P.R., XXIX., 2.
- Mauritius: Illustration of a Page from the collection of H.R.H. the Prince of Wales, S.C.A., IV.

- "Me and Myn, Limited," by S. R. Crockett, G.S.W., V., in all issue from January to 5th 6th April.
- Mexico: The Fiscal Stamps of, supplement to, M.P.J., January to June, September and October.
- Montenegro: A Reference List with Notes, by Charles J. Phillips, S.G.M.J., XVII., 157, 181.
- More about Sarawak Stamps, by B. T. K. Smith, A.S.M.C., 41.
- Morten, W. V. ("Well-known Philatelists"), P.J.G.B., XVII., 157.
- Mozambique Co.: The Postal System of the (Reprinted), G.S.W., VI., 252.
- "Mulready" Caricatures, Collectors of, S.C.F., XIII., 40.
- Munn, W. W. ("Well-known Philatelists"), P.J.G.B., XVII., 225.
- My Favourite Country, P.S., I., 10, Egypt by J. Cecil Rix, B.A., Grenada by Dalwigk, 88, Chili by Symes, 120.
- My Favourite Country, and Why, by W. Buckland Edwards, B.Sc., G.S.W., V., 139.
- My First and only Find, by Timbrophilist (reprinted), S.C.F., XIII., 34.
- My Souvenirs, Reminiscences of a Veteran, by Pierre Mahé, S.G.M.J., XVII., 194, 257.
- Mystifying Surcharges, by the Editor, W.E.P., IV., 85.
- Nankivell, Edward J., The Stamps of Bermuda, P.S., I., 5; Lagos, 19; Jamaica, 35; Gold Coast, 51; Sierra Leone, 67; Zululand, 83; Seychelles, 99; Cayman Islands, 127; Southern Nigeria, 139; Alsace and Lorraine; Bahamas, 151; Sweden, 162.
- National Collection of Ireland, The, P.R., XXIX., 232.
- Native States: Some Unchronicled Minor Varieties of Indian Stamps, Surcharge for, S.G.M.J., XVII.
- Nepal, The Stamps of, by Major E. B. Evans, G.S.W., VI., 134, 149, 168, 185.
- New Issues of Postage Stamps: *All journals*
- New Issue of 1906, a simplified list, by Charles Nissen, S.C.A., IV., 24.
- New Specialism, The, by P. L. Pemberton, P.J.G.B., XVII., 75, 118, 146, 167, 265.
- New Season's Catalogues, The, S.C.F., XIII., 176.
- New South Wales: Plates for the new "Oceania," The, L.P., XVI., 9.
- New Zealand, The Official Stamp Prosecution in, S.C.F., XIII., 81.
- New Zealand "Officials," Alleged Illegal Sales, G.S.W., VI., 54, 78.
- New Zealand, Pictorial Stamps of, by W. Buckland Edwards, B.Sc., S.C.F., XII., 207, 215, 239.
- New Zealand Stamps in the making, S.C.F., XIII., 9.
- Niger Company, The Stamps used by the Royal, by P. L. Pemberton, P.J.G.B., XVII., 81, 97, 118.
- Niue, The Postage Stamps of, by Bertram W. H. Poole, W.E.R.P., IV., 66.
- Notable Philatelists (Biographies and Portraits), P.R., XXVIII., 5, 27, 53, 75, 101, 117, 131, 151, 170, 194, 215, 231.
- Notes on the Early "Q and Crown" papers by L. S. R. Hausburg, L.P., XVI., 291.
- Notes on Mr. T. W. Morris' Articles on the Stamps of Greece, by P. L. Pemberton, P.J.G.B., XVII., 206, 229.
- Notes on the New "Gibbons," by A. O. Barclay, S.C.F., XIII., 188.
- Notes on Proclamations bearing on the Post Office, by the Right Hon. The Earl of Crawford, K.T., L.P., XVI., 2, 32, 69.

- Note on the Types of Check-letters employed from 1840 to 1864, A, by C. F. Dendy Marshall, B.A., L.P., XVI., 38.
- Notes on the Two First Types of Queensland, by Wallaby, P.J.G.B., XVII., 71.
- Notes on West Australian Stamps, by Wallaby, P.J.G.B., XVII., 127, 149, 231.
- Officially Paid Handstamps, by I. J. Bernstein, S.C.F., XIII., 11.
- Officials, The Board of Trade, by I. J. Bernstein, S.C.A., IV., 20.
- Obituary: E. P. Ainsworth, S.C.F., XIII., 30; R. R. Bogert, L.P., XVII., 42; S.G.M.J., XVII., 164; Dr. Seymour Burrows, L.P., XVI., 120; H. G. Cox, S.C.F., XII., 211; Miss Fernley, P.R., XXIX., 243; L.P., XVII., 262; Herr H. Fraenkel, 231; P.R., XXIX., 194; S.G.M.J., XVIII., 101; M. M. Marconnet, L.P., XVI., 42; Arthur Maury, L.P., XVI., 295; P.R., XXIX., 230; S.G.M.J., XVIII., 1; William Thorne, L.P., XVI., 42; S.G.M.J., XVII., 164; Albert Thunier, L.P., XVI., 93; Consul Weber, L.P., XVI., 292.
- Old Stamp Collections, by Gerald C. Colman, S.C., XI., 90.
- Old Time Memories, by L. Hancian, S.G.M.J., XVII., 167, 234; XVIII., 69.
- Our Review of Reviews, S.C.F., XII.; XIII., 90, 98, 102, 133, 181, 192.
- Overprints, A Revised Catalogue of Private, by B. M'Gowan, E.W.S.N., 1315, 1393, 1397.
- Pahang, Provisional Half-Stamps of, 1897, by R. E. James, G.S.W., VI., 282.
- "Paid" Stamps of Great Britain, by Rev. P. E. Raynor, S.C., XI., 18, by W. Kühn, S.C., XI., 68, 82.
- Panama Surcharges, The, by W. W. Randall and J. M. Bartels (Reviewed), L.P., XVI., 297.
- Paper for Colonial Stamps (Reprinted), S.C.F., XIII., 132.
- Papers for Moderate Specialists, by P. L. Pemberton, P.J.G.P., XVII., 10, 32, 54, 78, 104, 125, 185.
- Papua, The Stamps of, by D. C. G., G.S.W., VI., 394.
- Parcel Post "Paid" Stamps, by W. Kühn, S.C., XI., 68, 82; S.C.F., XIII., 26.
- Patent Medicine Stamps, British, M.P.J., VIII., 1, 9, 17, 25, 33, 41, 49, 57, 65, 73.
- Perforations of Victoria, The, by L. L. R. Hausburg, S.G.M.J., XVII., 203.
- Penny Post of 1680, William Dockwra and the London, by H. J. Maguire, S.G.M.J., XVIII., 16, 67, 89.
- Penrhyn Island, The Postage Stamps of, by Bertram W. H. Poole, W.E.P., IV., 115.
- Persian Postage Stamps (Stamp Papers Reprinted), by Jules Bouvez, S.C.F., XII., 210.
- Philatelic Exchange Clubs, A Directory and Guide, S.C.A., IV., 95.
- Philately and Art, by the Editor, W.E.P., IV., 21, 37, 57.
- Philatelic Exhibition of the Year. The (1906), S.C.A., IV., 9.
- Philatelic Exhibition at Calcutta, L.P., XVI., 13.
- Philatelic Libraries, On, by B. T. K. Smith, A.S.M.C., 25.
- Philatelic Literary Index for 1906, by Percy C. Bishop, S.C.A., IV., 72.
- Philatelic Review of Reviews, P.J.G.B., XVII., 17, 39, 61, 88, 108, 130, 152, 173, 196, 219, 242, 267

- Philatelic Societies : A Directory and Guide, S.C.A., IV., 89.  
 Philatelic Terms, by B. W. H. Poole, W.E.P., III., 178.  
 Philatelist's Zoo, by B. W. H. Poole, S.G.W., V., 252.  
 Pictorial Stamps of New Zealand, by W. Buckland Edwards, B.Sc., S.C.F., XII., 207, 215, 239.  
 Postage Due Stamps, by the Editor, W.E.P., IV., 150.  
 Postage Stamps of Russia. The, by B. T. K. Smith, A.S.M.C., I, 9, 18.  
 Postal Cards and Covers, by a Specialist, S.C.F., XII., 205, 228; XIII., 26, 39, 55, 87, 116, 129, 146, 166, 191.  
 Postal Issue of Denmark and the Colonies, The, by L. Hanciau, S.G.M.J., XVII., 139, 205, 247; XVIII., 54, 108.  
 Postponement of the Indian Philatelic Exhibition, L.P., XVI., 44, 72.  
 Portraits on Stamps, by "Boswell Junior," G.S.W., V., 2, 20, 52, 70, 101, 118, 155, 185, 202, 219, 250, 267, 285, 298, 314, 331, 362, 379, 399, 417; VI., 40, 53, 83, 102, 133, 146, 163, 265, 298, 331, 393.  
 Portugal, The Stamps of (Reviewed), L.P., XVI., 94.  
 Progress of Postage Stamps, The, S.C.F., XIII., 11.  
 Proposed Literature Society, A, P.R., XXIX., 165; S.G.M.J., XVIII., 43; L.P., XVI., 194; A.S.M.C., 57; S.C., XI., 120; M.P.J., VIII., 61; P.J.G.B., XVII., 170.  
 Proposed Uniform Australian Stamps, The, L.P., XVI., 118.  
 Provisional Note on the History of the 1d. Stamp, Great Britain, May, 1840, by the Right Hon. the Earl of Crawford, XVI., 248.  
 Punctured Officials, by the Editor, W.E.P., IV., 102.  
 Punctured Official Stamps, S.C.F., XIII., 128.  
 Queensland (Notes on the Two First types), by Wallaby, P.J.G.B., XVII., 71.  
 Question of Condition, by Anti-Humbug, The, S.C.F., XIII., 30, 52; by J. Chadwick Taylor, S.C.F., XIII., 60.  
 Queensland : The Electrotyped Postage Stamps, from 1879-1906, by J. Bornefeld, S.G.M.J., XVIII., 10, 30, 113, 132.  
 Railway Letter Stamps, a very short but Complete Catalogue.  
 Railway Stamps, M.P.J., VIII., 14, 39, 47, 78, E.S.W.  
 Rarest Stamps, by P. Mahé, G.S.W., 266, 280, 295, 307, 325.  
 Registration Covers and Entries, S.C., XI., 83.  
 Registration Envelopes, E.W.S.N., 1273, 1289.  
 Registered Letters, W.E.P., IV., 99.  
 Reprints, Captain Ohrt's book on (reviewed), L.P., XVI., 296.  
 Reprints and Forgeries, by Rev. Robert B. Earé, G.S.W., V., 53, 70, 103, 119, 156, 187, 207, 220, 251, 282, 300, 314, 332, 346, 363, 381; VI., 401, 419.  
 Reprints of the First Issue of Luxemburg, L.P., XVI., 11.  
 Reprints of 1859, Modena, L.P., XVI., 117.  
 Review of Reviews, P.J.G.B., XVII., 17, 39, 61, 88, 108, 130, 152, 173, 196, 219, 242, 267.  
 Reunion, The Stamps of (Reprinted), by William Herrick, Stamp, S.C.F., XII., 217.  
 Revenue Stamps of Luxemburg, by W. Morley, M.P.J., VIII., 79.  
 Rhodesia, by Paul Howard, P.J.G.B., XVII., 254.  
 Rise of Stamp Issuing Countries, The, by John A. Ornstein, P.J.G.B., XVII., 240; P.S., 178.  
 Roumania : The issue of 1906, by G. B. Durst, P.R., XXIX., 7.



- Rowland Hill, Sir; Story of a Great Reform, by his Daughter, P.S., 57.
- Royal Niger Company, The Stamps used by The, by P. L. Pemberton, P.J.G.B., XVII., 81, 97, 118.
- Roycroft, W. T. ("Well-known Philatelists"), P.J.G.B., XVII., 249.
- Russia, The Postage Stamps of, by B. T. K. Smith, A.S.M.C., I, 9, 18.
- St. Helena (Papers for Moderate Specialists), P.J.G.B., 185.
- St. Vincent, 1 sh. slate-grey of 1866, by E. D. Bacon, L.P., XVI., 116.
- Salvador, Stamps of, by Joseph B. Levey, S.G.M.J., XVIII., 62, 93, 116, 140.
- Samoa, The Postage Stamps of, by Bertram W. H. Poole, W.E.P., IV., 71, 89, 105, 121, 132, 147.
- Sarawak, The Postage Stamps of, by Fred. J. Melville (reviewed), L.P., XVI., 234; P.R., XXIX., 179, 181; P.S., 42; A.S.M.C., 41; S.G.M.J., XVIII., 74; S.C.F., XIII., 132; P.J.G.B., XVII., 209; M.P.J., VIII., 69; S.C., XI., 140.
- Sarawak, by B. W. H. Poole, W.E.P., III., 186, 196; IV., 5, 23, 59.
- Sarawak Stamps, More about, by B. T. K. Smith, A.S.M.C., 41.
- Savage, J. H. M. ("Well-known Philatelists"), P.J.G.B., XVII., 201.
- Savournin, Lucien ("Well-known Philatelists"), P.J.G.B., XVII., 43; The Death of, S.C.F., XIII., 7.
- Short History of Thread Paper, A, by Plain Anchor, S.G.M.J., XVII., 161.
- Simplified List, Issue of 1906, A, by Chas. Nissen, S.C.A., IV., 24.
- Societies: British Philatelic, S.C.A., IV., 89; British Colonial, S.C.A., IV., 98; American, S.C.A., IV., 99.
- Societies and Clubs. Reports on: *All Journals*.
- Solomon Islands, The Stamps of, S.G.M.J., XVIII., 17.
- Some Dangerous Reprints and Forgeries of Hayti (reprinted), by Th. Huas, S.C.F., XIII., 89.
- Some Unchronicled Minor Varieties of Indian Stamps, surcharged for Native States, S.G.M.J., XVII., 165.
- Spanish Forgeries, Notes on, by J. Corner-Spokes, S.C.F., XIII., 17, 27, 35.
- Specialism (The New), by P. L. Pemberton, P.J.G.B., XVII., 75, 118, 146, 167, 265.
- Stamps of British New Guinea, The, by B. W. H. Poole, W.E.P., III., 191.
- Stamp Collectors' Annual (reviewed), L.P., XVI., 74; M.P.J., VIII., 30; P.R., XXIX., 68; P.J.G.B., XVII., 60; S.G.M.J., XVII., 174; S.C.F., XIII., 6; S.C., XI., 45.
- Stamps of the Cayman Islands, The, by B. W. H. Poole, W.E.P., III., 175.
- Stamp Designs, By B. W. H. Poole, G.S.W., VI., 67, 85.
- Stamps Exhibition, London (Junior Society), G.S.W., VI., 246, 372; M.P.J., VIII., 77; L.P., XVI., 215, 263; P.J.G.B., XVII., 169; P.R., XXIX., 207; S.C.F., XIII., 93, 126; S.G.M.J., XVIII., 99; S.C., XI., 142.
- Stamps of Greece, The: by T. W. Morris, S.C., XI., 2, 22, 37, 50, 71, 93, 99, 114; by Pompeo Fabri, S.C., XI., 127, 134, 150.
- Stamp Issuing Countries, The Rise, by John A. Ornstein, P.J.G.B., XVII., 240.
- Stamps of "La Guaira," by B. K. Smith, A.S.M.C., 33, 49, 51.

- Stamp Market of To-day, The, by J. W. H. H., S.C.F., XIII., 112, 120, 130, 148, 156.
- Stamps of the Rajah's Brooke, The, by Percy C. Bishop, S.C.F., XIII., 132.
- Stamps of Salvador, by Joseph B. Levey, S.G.M.J., XVIII., 62, 93, 116, 140.
- Stamps of Sarawak. The Postage, by Fred. J. Melville (reviewed), L.P., XVI., 234; P.R., XXIX., 179, 181; P.S., 42; A.S.M.C., 41; S.G.M.J., XVIII., 74; S.C.F., XIII., 132; P.J.G.B., XVII., 209; M.P.J., VIII., 69; S.C., XI., 140.
- Stamps of the Solomon Islands. The, S.G.M.J., XVIII., 17.
- Stamps of St. Christopher, The, by Wm. J. Gardner (reprinted), S.C.F., XIII., 58, 68.
- Stamps of Tabago, The, by F. F. Lamb, P.J.G.B., XVII., 237.
- Stamps of the United States of the Ionian Islands, The, by E. D. Bacon, L.P., 60.
- Stories about Postage Stamps, by Bertram W. H. Poole, W.E.P., IV., 137, 152.
- Sudan Postman, The, By J. W. H. Heslop, G.S.W., VI., 296.
- Sousse Perforation, by "Tête-bêche," P.R., XXIX., 216.
- Switzerland, The Forgeries of the "Cantonal" Stamps of, P.R., XXIX., 29, 58, 77, 93, 111, 152, 176, 197.
- Switzerland: Issue 1855-62, with Silk Thread, L.P., XVI., 40.
- Symposium on Simplified Collection, G.S.W., V., 6, 38, 51, 246, 264, 280, 295, 311, 328, 344; VI., 99.
- Tamsen, E. ("Well-Known Philatelists"), P.J.G.B., XVII., 180.
- Telegraphs, New Issues of, M.P.J., VIII., 16, 24, 31, 80.
- Tête-bêche (French Stamps), P.J.G.B. (Reprinted), XVII., 98.
- Thread Paper, Short History, A, by "Plain Anchor," S.G.M.J., XVII., 161.
- Tobago, The Stamps of, by F. F. Lamb, P.J.G.B., XVII., 237.
- Town-Post of Paris and London (Reprinted), by B. T. K. Smith, A.S.M.C., 73.
- Transvaal, C. S. A. R., L.P., XVI., 21.
- Trechmann, Otto Cramer ("Well-known Philatelists"), P.J.G.B., XVII., 115.
- Twentieth Century Colonials, by D. B. Armstrong, G.W.S., VI., 327, 345, 360, 373, 390.
- Two Shilling Stamps (1854 and 1864) of Victoria, The, by L. L. R. Hausburg, L.P., XVI., 108.
- Types and Varieties of the Stamps of Wenden, by W. Svenson, translated by Frank Phillips, S.G.M.J., XVIII., 85, 135.
- Uniform Stamps, Australian Commonwealth (Reprinted), E.W.S.N., 1341, 1350, 1365, 1417, 1425, 1453, 1462, 1467, 1474.
- Uniform Postage Stamps for Australia (Reprinted), L.P., XVI., 181, 283; S.C.F., XIII., 186.
- United States Local Postage Stamps, On the (Reprinted), by James Lesley, junior, S.C.F., XIII., 139, 158.
- Universal Telegraph Co., New Discoveries, S.G.M.J., XVIII., 124 M.P.J., VIII., 24; S.C.F., XIII., 25; E.W.S.N., 1310.
- "Unused" and "Used," by G. C. Colman, S.C., XI., 116.
- "Used" and "Unused," by G. C. Colman, S.C., XI., 116.
- Value of a Peso, The, by the Editor, W.E.P., IV., 135.



- Victoria, First Issue, The, by J. Bornefeld, S.G.M.J., XVII., 209.
- Victoria, The Early Issues (1850-1864) of, by C. A. Stephenson, S.C., XI., 103, 115.
- Victoria, The Perforations of, S.G.M.J., XVII., 203.
- Victoria, The Two Shilling Stamps (1854 and 1864) of, by L. L. R. Hausburg, L.P., XVI., 108.
- Vryburg, Notes by Charles J. Phillips, S.G.M.J., XVII., 207.
- Walker, John, P.R., XXIX., 130.
- War-Time Philately in South Africa, by Mortimer Menper, S.C.F., XII., 212, 220.
- Wenden, The Types and Varieties of the Stamps of, by W. Svenson, translated by Frank Phillips, S.G.M.J., XVIII., 85, 135.
- West Australian Stamps, Notes on, by Wallaby, P.J.G.B., XVII., 127, 149, 231.
- West Indies, The, by Rev. Heslop, G.S.W., V., 400.
- Well-known Philatelists (Biographies and Portraits), P.J.G.B., XVII., 2, 22, 44, 66, 93, 115, 137, 157, 179, 201, 225, 249.
- What is the Status of Stamps Postmarked to Order? by "Anti-Humbog," S.C.F., XIII., 63.
- What is a Postage Stamp? by B. W. H. Poole, G.S.W., VI., 137, 151.
- White, H. L., P.R., XXIX., 74.
- Why Collect Stamps? by Harry E. Harris, P.J.G.B., XVII., 172.
- Why Some Stamps are Scarce, by J. W. H. Heslop, G.S.W., VI., 376.
- William Dockwra and the London "Penny Post" of 1680, by H. J. Maguire, S.G.M.J., XVIII., 16, 67, 89.
- Worcester Postage Stamps, History of the, by E. F. Coffin, B.A., S.G.M.J., XVIII., 138.



## Philatelic Societies and Exchange Clubs.

### A DIRECTORY AND GUIDE.

#### BRITISH SOCIETIES.

THE ROYAL PHILATELIC SOCIETY, LONDON.—Meetings are held at 4 Southampton Row, W.C., on alternate Thursdays. The Secretary's address for all communications is 10 Gracechurch Street, London, E.C. President, H.R.H. The Prince of Wales, K.G., &c. ; Vice-President, The Earl of Crawford, K.T. ; Hon. Secretary, J. A. Tilleard ; Hon. Treasurer, C. N. Biggs ; Hon. Assistant Secretary, H. R. Oldfield ; Hon. Librarian, L. W. Fulcher ; Committee, E. D. Bacon, M. P. Castle, J.P. (Hon. Vice-Presidents), T. W. Hall, L. L. R. Hausburg, C. E. M'Naughton, T. Maycock, F. Reichenheim. and R. B. Yardley.

*Titles of Members.*—The first three hundred and fifty members of the Society are to be called "Fellows," and to have the right to place the letters, F.R.P.S.L., after their names. subsequent elections to the title taking place, as vacancies occur, from among the ordinary members.

*Entrance Fee.*—The entrance for members to be reduced to £1 1s.

*Associates.*—Persons between the ages of sixteen and twenty-one are to be eligible for election as Associates without payment of entrance fee, and with an annual subscription of ten shillings and sixpence. These Associates are to have the right to attend ordinary meetings of the Society, and all the privileges of an ordinary member (including the receipt of the Society's journal) except the right of voting and of receiving such publications as are supplied either gratuitously or at reduced rates to ordinary members. The Associates are to have the right to become full members on attaining their majority.

*Election of Officers of the Society.*—Nominations for the candidature of any officer of the Society are, in future, to be given to the Secretary in writing on or before 20th May in each year.

**BIRMINGHAM PHILATELIC SOCIETY.**—Hon. President, Sir W. B. Avery, Bart.; President, R. Hollick; Vice-Presidents, T. W. Peck, W. Pimm; Hon. Secretary and Treasurer, G. Johnson, B.A., 308 Birchfield Road, Birmingham, at which address the Society's meetings are held.

**BRADFORD PHILATELIC SOCIETY.**—President, F. Gerhartz; Hon. Secretary, A. J. Foulger, 9 Beechwood Grove, Moorhead Lane, Shipley. Meetings are held on the first Thursday of the month.

**BRISTOL AND CLIFTON PHILATELIC SOCIETY.**—President, Alderman Gardner, J.P.; Vice-President, R. Dalton; Hon. Secretary and Treasurer, H. Alsop, 25 Alma Road, Clifton, Bristol. Frequent meetings are held, generally at the residence of the Hon. Secretary.

**CITY OF LONDON PHILATELIC SOCIETY.**—President, W. B. Edwards; Vice-Presidents, E. A. Klaber and J. R. Burton; Hon. Secretary, J. L. Eastwood, 169 Ferme Park Road, Crouch End, London, N.

**DUNDEE AND DISTRICT PHILATELIC SOCIETY.**—President, F. David; Hon. Secretary, G. H. Whitaker, 3 Eden Street, Dundee.

**FISCAL PHILATELIC SOCIETY.**—President, W. Schwabacher; Hon. Vice-Presidents, A. R. Bailliere, W. Corfield, C. S. F. Crofton, A. Hamilton, S. A. Klagsbrun, A. E. Lawrence, A. Schoeller, and A. P. Pearce; Vice-Presidents, W. Morley and E. H. Selway; Hon. Secretary, A. B. Kay, 18 Melrose Gardens, Hammersmith, London, W.

**GLASGOW AND WEST OF SCOTLAND PHILATELIC SOCIETY.**—President, James J. F. X. King, F.E.S.; Vice-Presidents, John Brown, Robert M. Mann, and John Muir; Hon. Secretary, J. Douglas Oatts, 113 Douglas Street, Glasgow. Meetings are held at 562 Sauchiehall Street, Glasgow.

**HALIFAX PHILATELIC SOCIETY.**—Hon. Secretary, Lionel Dickenson, 3 Livingstone Street, Lee Mount, Halifax.

HERNE BAY PHILATELIC SOCIETY.—President, Mr. Maclachlan, J.P. ; Hon. Secretary, T. F. Newton, 8 Promenade Central, Herne Bay.

HERTS PHILATELIC SOCIETY.—President, Franz Reichenheim ; Vice-President, Harry L. Hayman ; Hon. Vice-Presidents, Sir William Avery, Bart., M. P. Castle, J.P., Herbert R. Oldfield ; Hon. Secretary and Treasurer, H. A. Slade, Nine Fields, St. Albans. Headquarters for monthly meetings, 4 Southampton Row, London, W.C.

HUDDERSFIELD PHILATELIC SOCIETY.—Hon. Secretary, Charles H. Greenwood, 49 Perseverance Street, Primrose Hill, Huddersfield.

HULL AND EAST RIDING PHILATELIC ASSOCIATION.—President, Dr. R. M. Stokes ; Vice-President, Dean Hall ; Hon. Secretary and Treasurer, A. R. Hebblethwaite, 92 Park Grove, Hull.

HULL PHILATELIC SOCIETY.—President, Thos. Thompson ; Hon. Secretary, Edward W. Drury, 29 Bond Street, Hull.

THE IMPERIAL PHILATELIC SOCIETY (North London).—President, C. M. C. Symes ; Vice-President, C. J. Phillips ; Hon. Secretary and Treasurer, C. S. Muratori, 29 Fletching Road, L. Clapton, N.E. The above Philatelic Society has now been formed for stamp collectors in North London, with the object of encouraging the advancement and study of philately, to help the young and inexperienced philatelist to form a library of philatelic works, and to assist in the sale and exchange of duplicates.

INTERNATIONAL PHILATELIC UNION.—President, H. R. Oldfield ; Vice-Presidents, W. Schwabacher, L. W. Fulcher, W. Schwarte ; Hon. Secretary, T. H. Hinton, 26 Cromford Road, East Putney, London, S.W. Periodical meetings are held at Essex Hall, Essex Street, Strand.

IRISH PHILATELIC CLUB.—President, Wm. R. Lane-Joynt, B.L. ; Hon. Secretary, Thos. H. Levingston, 3 Dawson Street, Dublin.

**JUNIOR PHILATELIC SOCIETY.**—President, Fred. J. Melville ; Vice-Presidents, D. Ellis and W. Darwen ; Hon. General Secretary, Arthur Selinger, Paper Street, E.C. ; Meetings, 3 Bedford Street, W.C.

*Brighton Branch, F.P.S.*—Chairman, W. Mead ; Hon. Secretary, J. Corner-Spokes, 22 Denmark Terrace, Brighton.

*Manchester Branch, F.P.S.*—President, I. J. Bernstein ; Vice-President, W. W. Munn ; Hon. Secretary, J. R. M. Albrecht, 2 Seedly Terrace, Pendleton, Manchester. The meetings of the branch are held at the Y.M.C.A., Peter Street, Manchester.

**JUNIOR PHILATELIC SOCIETY OF SCOTLAND.**—Hon. President, Sir John Ure Primrose, Bart. ; Hon. Secretary, Robert Borland, Lochside, Milngavie, N.B. Meetings held at 562 Sauchiehall Street, Glasgow, on the first and third Wednesdays of each month.

**KENT AND SUSSEX PHILATELIC SOCIETY.**—President, Edward J. Nankivell ; Hon. Secretary, Frederick Wicks, The Lodge, near Tudeley, Tonbridge, Kent.

**LEEDS PHILATELIC SOCIETY.**—President, W. V. Morten ; Hon. Secretaries, Charles W. Harding, 139 Belle Vue Road, Leeds, and C. L. Pickard, 15 Woodhouse Lane, Leeds. The meetings of the Leeds Society are held on Tuesdays, at 7.30 p.m., at the Leeds Institute, Cookridge Street.

**LEICESTER PHILATELIC SOCIETY.**—President, Dr. R. Milbourne West ; Vice-Presidents, Dr. W. Mussen, Robert Walker ; Hon. Secretary, P. V. Sansome, Tennyson Street, St. James' Road, Leicester.

**LITERATURE SOCIETY, PHILATELIC.**—President, E. D. Bacon ; Vice-President, B. T. K. Smith ; Hon. Secretary, F. J. Peplow.

**LIVERPOOL PHILATELIC SOCIETY.**—President, J. H. M. Savage ; Vice-Presidents, Herbert Woods and W. Gill ; Hon. Secretary, Arthur S. Allender, 71 Canning Street, Liverpool. The meetings of the Society are held at the Hotel St. George, Lime Street, Liverpool.

LIVERPOOL JUNIOR PHILATELIC SOCIETY.—President, Dr. F. E. Ackerley ; Hon. Secretary, J. H. M. Savage, 56 Bebington Road, Higher Tranmore.

MANCHESTER PHILATELIC SOCIETY.—President, W. Dorning Beckton ; Vice-Presidents, J. H. Abbot and W. Grunewald ; Hon. Secretary, G. Fred. H. Gibson, Fairfield, Crumpsall, Manchester. Meetings are held every Friday evening during the season, at the Grand Hotel, Manchester.

NORTH OF ENGLAND PHILATELIC SOCIETY.—President, George B. Bainbridge, J.P. ; Vice-President, T. D. Hume ; Hon. Secretary and Treasurer, Mark Easton, 42 Sidney Grove, Newcastle-on-Tyne. Meetings are held on the first Thursday in each month, October to April, at the Y.M.C.A., Newcastle-on-Tyne.

PHILATELIC LITERATURE SOCIETY.—President, E. D. Bacon ; Vice-President, B. T. K. Smith ; Hon. Secretary, F. J. Peplow, 185 Barrow Road, East Dulwich.

PLYMOUTH PHILATELIC SOCIETY.—President, Major G. H. Stockdale, R.E. ; Hon. Secretary, Charles H. Dymond, 5 Cotehele Terrace, Stoke, Devonport.

POSTMARK SOCIETY.—For collectors and students of postmarks. Hon. Secretary, Thomas Whitworth, Waterloo, Liverpool.

SCOTTISH PHILATELIC SOCIETY.—President, John Walker ; Vice-President, Andrew Henderson ; Hon. Secretary, R. W. Findlater, 30 Buckingham Terrace, Edinburgh.

*Junior Branch.*—President, N. M. Berrie ; Hon. Secretary, Frank Chalmers, 24 Bruntsfield Gardens, Edinburgh.

SHEFFIELD PHILATELIC SOCIETY.—President, Frank Atkin ; Vice-President, W. G. Laycock ; Secretary, H. E. Stanfield. Meetings held at the King's Head Hotel, Sheffield.

SOUTH WALES AND MONMOUTHSHIRE PHILATELIC SOCIETY.—Chairman, E. P. Crowther; Hon. Secretary, H. Perkins, 4 Plasturton Gardens, Cardiff; Secretary of Junior Section, Percy J. Norman, 52 Hamilton Street, Cardiff.

STAMP EXCHANGE PROTECTION SOCIETY.—President, Rev. G. H. Raynor, M.A.; Hon. Secretary and Treasurer, F. A. Wickhart, 30 Highbury New Park, London, N.

STAMP TRADE PROTECTION ASSOCIATION.—Secretary, J. S. G. Telfer, 63-64 Chancery Lane, London, W.C.

---

### **British Exchange Clubs.**

ASSOCIATED BANKS' STAMP EXCHANGE.—Hon. Secretary, Herbert Ford, Staveleigh, Devonshire Road, Handsworth Wood, Staffs.

AVONDALE STAMP EXCHANGE CLUB.—Plymouth.

BLACKPOOL STAMP EXCHANGE.—Secretary, W. Warburton, 14 Bolton Street, Ramsbottom.

BLACKHEATH STAMP EXCHANGE CLUB.—Hon. Secretary and Treasurer, F. C. Henderson, Eton Grove, Lewisham, S.E.

BRITISH AND COLONIAL STAMP CLUB.—Secretary, Miss Haynes, 119 Clarendon Road, Holland Park, London, W.

BRITISH EMPIRE STAMP EXCHANGE CLUB.—Secretary, H. Bean, 164 Loughborough Park, London, S.W.

CALEDONIA STAMP EXCHANGE CLUB.—Secretary, John Johnson, Moss-Side, New Deer, Aberdeenshire.



CHELSEA "ENTIRES" EXCHANGE.—Manager, B. W. Warhurst, 15 Paultons Square, Chelsea, S.W.

CITY BANKS' STAMP EXCHANGE CLUB.—Hon. Secretary, C. H. Moulds, 67 Pembroke Road, Ilford, Essex.

CITY STAMP EXCHANGE CLUB.—Secretary, S. F. Bickers, 7 Richmond Terrace, Cork.

CLARENDON STAMP EXCHANGE CLUB.—Secretary, F. J. Rolt, 1 Salisbury Road, Wimbledon, S.W.

CLIFTON STAMP EXCHANGE CLUB.—Secretary, J. H. Reynolds, 17 Cranbrook Road, Redland, Bristol.

COLLECTORS' STAMP EXCHANGE CLUB.—Secretary and Founder, Nelson T. Hillier, Hayman's Hill, Horsmonden.

CONCORDIA STAMP EXCHANGE.—Secretary, Rev. L. Graham, B.A., LL.B., Kirton Rectory, Ollerton, Notts.

COUNTY OF STAFFORD PHILATELIC EXCHANGE.—Hon. Secretary, T. B. Widdowson, 16 Stretton Road, Leicester

DERBYSHIRE STAMP EXCHANGE.—Secretary, Hugh Harrop, 17 Wesley Street, Hadfield, near Manchester.

EASTERN COUNTIES' STAMP EXCHANGE SOCIETY.—Secretary, J. Johnson, Moss-Side, New Deer, Aberdeenshire.

ENGLISH STAMP EXCHANGE SOCIETY.—Secretary, Victor H. Gregory, 2 Burlington Gardens, Chiswick, London, W.

EXCELSIOR STAMP EXCHANGE.—Secretary, M. Heslop, Windmill House, Stocking Pelham, Buntingford, Herts.

FISCAL STAMP EXCHANGE CLUB.—Hon. Secretary, A. B. Kay, 18 Melrose Gardens, Hammersmith, W.

FORTH STAMP EXCHANGE CLUB.—Secretary, J. Mullo Weir, 80 Hanover Street, Edinburgh.



GENERAL COLLECTORS' EXCHANGE CLUB.—Secretary, C. J. Phillips, 37 Flanders Road, Bedford Park, W.

GREATER BRITAIN STAMP EXCHANGE.—Secretary, W. S. Webb, Walpole, Halesworth.

HAMPSHIRE STAMP EXCHANGE.—Secretary, Arthur Toole, North Road, Southampton.

IMPERIAL STAMP EXCHANGE SOCIETY.—Secretary, F. B. Smith, 29 Havelock Road, South Wimbledon, Surrey

KILDARE STAMP EXCHANGE CLUB.—Secretary, Capt. F. F. Freeman, Calverston House, Kilcullen, Co. Kildare.

KING EDWARD VII. PHILATELIC SOCIETY.—Secretary, C. J. Phillips, 37 Flanders Road, Bedford Park, London, W.

LANCASTRIAN STAMP EXCHANGE.—Secretary, W. Warburton, 14 Bolton Street, Ramsbottom.

LEICESTER STAMP EXCHANGE.—Secretary, P. Sansome, Tennyson Street, Leicester.

LINCOLN STAMP EXCHANGE.—Secretary, J. M. Morton, 54 St. Mary's Road, Peckham, London.

MANCHESTER CITY STAMP EXCHANGE.—Secretary, Edwin P. Ainsworth, 537 Stockport Road, Manchester.

NORTHERN STAMP EXCHANGE SOCIETY.—Secretary, F. A. Wickhart, 30 Highbury New Park, London, N.

NORTHAMPTONSHIRE STAMP EXCHANGE.—Secretary, Miss G. Butlin, 13 Euston Place, Leamington.

ONE AND ALL STAMP EXCHANGE SOCIETY.—Secretary, J. G. J. Stevens, Stanley House, Redruth.

OTTERDALE STAMP EXCHANGE CLUB.—Secretary, G. Herbert Dannatt, Lyndale, Blackheath, S.E.

OXFORD STAMP EXCHANGE.—Secretary, Rev. H. Cummings, Littlemore, Oxford.

PALACE PHILATELIC EXCHANGE SOCIETY.—Secretary, C. A. Squire Cox, 3 Seymour Terrace, Anerley, S.E.

PALATINE STAMP EXCHANGE.—Hon. Secretary, Percy Dunbar, Oakdene, Burton-on-Trent.

PERTSHIRE STAMP EXCHANGE CLUB.—Secretary, Miss Culbard, Lag Beag, Dunkeld, N.B.

PHILATELIC EXCHANGE CLUB.—Secretary, F. Phillips, 29 Dalby Street, Prince of Wales' Road, London, N.W.

PRIMROSE STAMP EXCHANGE SOCIETY.—Secretary, C. H. Greenwood, 49 Perseverance Street, Primrose Hill, Huddersfield.

PUBLIC SCHOOLS' STAMP EXCHANGE SOCIETY.—General Secretary, Mrs. Rowsell, 11 Alexandra Road, Bedford.

RECRUIT STAMP EXCHANGE CLUB.—Hon. Secretary, Major Pym, The Turrets, Walmer, Kent.

ROYAL COUNTIES' PHILATELIC EXCHANGE SOCIETY.—Secretary, F. W. Tapper, 63 Waverley Road, Reading.

MR. SEMPLE'S STAMP EXCHANGE SOCIETY.—Hon. Secretary, Guy Semple, 49 Wester Road, Putney, S.W.

SOLENT STAMP EXCHANGE SOCIETY.—Secretary, E. G. Hazelwood, 48 Clovelly Road, Southampton.

SOUTH OF ENGLAND STAMP EXCHANGE.—Secretary, Miss Florence E. Smith, Winfrith, The Crescent, Bedford.

THE SPECIALISTS' STAMP EXCHANGE.—Secretary, J. M. Morton, 23 Lealand Road, South Tottenham.

"STAMPS" EXCHANGE SOCIETY.—Hon. Secretary, Thos. B. Widdowson, Lincoln Street, Leicester.

SUBURBAN STAMP EXCHANGE CLUB.—Secretary, H. A. Slade, 72 Westbourne Terrace, London, W.

TRAVELLERS' STAMP EXCHANGE.—Secretary, Leicester A. B. Paine, Longsdon, near Stoke-on-Trent.

"UNUSED" EXCHANGE CLUB.—Secretary, B. A. Meadows, 21 North Street, Wellingborough.

WEST RIDING STAMP EXCHANGE CLUB.—Secretary, Abraham Grace, Cloth Hall, Wakefield.

WOODFORD STAMP EXCHANGE CLUB.—Secretary, F. Peake Sexton, Park Lodge, Fairfield West, Kingston-on-Thames.

**BRITISH COLONIAL SOCIETIES.****Australia.**

BRISBANE PHILATELIC SOCIETY.—President, Dr. Lucas; Hon. Secretary, R. Conochie, Junr., Brisbane, Queensland.

PHILATELIC SOCIETY OF SOUTH AUSTRALIA.—President, Dr. Benham; Hon. Secretary, J. H. Welfare, Pirie Street, Adelaide.

PHILATELIC SOCIETY OF VICTORIA.—President, F. A. Jackson; Secretary, Treasurer, and Exchange Superintendent, W. Brettschneider, 128 Russell Street, Melbourne. There is a Junior Branch, of which Messrs. H. B. Jackson, W. Robertson, and W. Husband are the Managing Committee.

PRAHRAN PHILATELIC SOCIETY, VICTORIA, AUSTRALIA.—President, C. E. Lovett; Secretary, G. W. Minty, Kooyong Road, Armadale; Meetings, Prahran Coffee Palace, Chapel Street.

SYDNEY PHILATELIC CLUB.—President, A. F. Basset Hull; Hon. Secretary, A. H. Pettiler; Acting Hon. Secretary, J. J. Witney, Box 704, G.P.O., Sydney, N.S.W.

TASMANIAN PHILATELIC SOCIETY.—President, Captain Rich; Hon. Secretary, M. H. M'Arthur, Castray Esplanade, Hobart, Tasmania.

UNION STAMP COLLECTING CLUB (for Juniors).—President, G. H. Anderson; Club Rooms, 316 Elizabeth Street South, Sydney, N.S.W.

**British Guiana.**

BRITISH GUIANA PHILATELIC SOCIETY.—President, Hon. B. Howell Jones; Hon. Secretary and Treasurer, A. D. Ferguson, Georgetown, British Guiana.

BRITISH GUIANA JUNIOR PHILATELIC CLUB.—Acting Secretary, P. Watson; Club Address, P.O. Box 99, Georgetown, British Guiana.

**Canada.**

CANADIAN PHILATELIC SOCIETY.—President, O. W. Barwick ; Secretary and Treasurer, F. B. Archer, 995 St. Urban Street, Montreal, Canada.

**India.**

PHILATELIC SOCIETY OF INDIA.—Hon. President, C. Stewart-Wilson, I.C.S. ; President, Sir David Masson ; Hon. Secretary, Wilmot Corfield, 25 Mangol Lane, Calcutta.

**Natal.**

DURBAN AND DISTRICT PHILATELIC SOCIETY.—President, J. Wallace Bradley ; Vice-President, T. J. Miljoen ; Hon. Secretary, W. Percy Williams, 93 Club Arcade, Durban.

**New Zealand.**

PHILATELIC SOCIETY OF NEW ZEALAND.—Patron, Lord Plunket ; President, the Hon. the Postmaster-General ; Hon. Secretary and Treasurer, L. A. Sanderson, Wellington, New Zealand.

**Transvaal.**

PHILATELIC SOCIETY OF JOHANNESBURG.—Chairman, C. R. Schuler ; Hon. Secretary, J. Glasser, P.O. Box 4967, Johannesburg, S.A.

TRANSVAAL PHILATELIC SOCIETY.—President, T. Henderson, M.A. ; Hon. Secretary, H. V. Fowler, Box 2404, Johannesburg.

**AMERICAN SOCIETIES.**

AMERICAN PHILATELIC ASSOCIATION.—President, Wm. C. Stone ; Secretary, A. F. Henkels, 1417 No. Bouvier, Philadelphia, Pa., U.S.A.

BOSTON PHILATELIC SOCIETY.—President, C. A. Howes ; Vice-President, Wyllard O. Wylie ; Secretary, E. de Z. Kelley, 83 Summer Street, Boston, Mass., U.S.A.

COLLECTORS' CLUB, NEW YORK.—President, John N. Luff; Secretary and Treasurer, John A. Klemann; Club Rooms, 106 East 23rd Street, New York City.

DENVER STAMP CLUB.—President, Chas. A. Nast; Secretary, H. A. Davis, Denver, Colorado, U.S.A.

INDIANA STATE PHILATELIC SOCIETY.—President, Wm. E. Ault; Secretary, Benjamin F. Egan, 427 Abbott Street, Indianapolis, U.S.A.

INTERSTATE PHILATELIC ASSOCIATION.—President, H. C. Griesel; Secretary, Edwin Caswell, 191 Overton Street, Portland, Or., U.S.A.

JUNIOR STAMP CLUB OF DENVER, COLORADO.—President, C. M. Snyder; Secretary, H. E. Munger, 2502 West 32nd Avenue, Denver, Colo., U.S.A.

KANSAS CITY STAMP CLUB.—President, Paul Luther; Secretary, A. L. Nelson, 1823 West Prospect Place, Kansas City, Mo., U.S.A.

METROPOLITAN FISCAL ASSOCIATION.—President, Chas. A. Nast; Secretary, Wm. C. Polk, 91 Lester Street, Providence, R.I., U.S.A.

METROPOLITAN PHILATELIC ASSOCIATION.—President, Rev. H. Wendt; Secretary and Treasurer, F. A. Mueller, Peake, Neb., U.S.A.

NATIONAL PHILATELIC ASSOCIATION OF LETTER CARRIERS.—President, Edward P. Hennessy; Secretary, Frank B. Eldredge, 17 Jefferson Street, Attleboro', Mass., U.S.A.

NATIONAL STAMP COMMITTEE.—President, C. F. Rothfuchs; Secretary, Wyllard O. Wylie, Room 508, Kast Building, Boston, Mass., U.S.A.

NEBRASKA PHILATELIC SOCIETY.—President, E. H. Wilkinson; Secretary and Treasurer, L. T. Brodstone, Superior, Neb., U.S.A.

NEW ENGLAND PHILATELIC ASSOCIATION.—President, H. Wesley Legg; Secretary and Treasurer, Alex. P. Brown, 28 School Street, Boston, Mass., U.S.A.

NEW YORK STAMP SOCIETY.—President, Dr. H. B. F. Heath; Secretary, Eugene Klein, care of Arkin & Co., 104 Lenox Avenue, New York City.

POSTAL CARD SOCIETY OF AMERICA.—President, S. Schachne; Secretary, S. M. Edwards, Argusville, North Dakota, U.S.A.

PRE-CANCELLED STAMP CLUB.—President, Clarence H. Eagle; Secretary and Treasurer, F. L. Smith, 40 Exchange Place, New York City.

RHODE ISLAND PHILATELIC SOCIETY.—President, A. R. Perry; Secretary and Treasurer, W. Irving Cox, 181 Friendship Street, Providence, R.I., U.S.A.

PHILADELPHIA PHILATELIC SOCIETY.—Secretary, A. F. Henkels, 1417 N. Bouvier Street, Philadelphia, P.A., U.S.A.

ST. LOUIS STAMP COLLECTORS' SOCIETY.—President, H. A. Diamant; Secretary, Chester Myers, 300 South 3rd Street, St. Louis, Mo., U.S.A.

SOUTHERN PHILATELIC SOCIETY.—President, Chas. Roemer; Secretary and Treasurer, W. P. Kelly, Kansas City, Mo., U.S.A.

STAMP COLLECTORS' PROTECTIVE ASSOCIATION OF AMERICA.—President, E. Chandlee; Secretary and Treasurer, L. Brodstone, Superior, Neb., U.S.A.

TWIN CITY PHILATELIC SOCIETY.—President, E. Doebelin; Secretary, W. G. Kirchenbower, 6750 Simon Avenue, Pittsburgh, Pa., U.S.A.

UNITED STATES REVENUE SOCIETY (OR UNITED STATES REVENUE STAMP COLLECTORS' ASSOCIATION, as the Committee may decide).—Secretary, Dr. Holland A. Davis, 1622 Welton Street, Denver, Colorado, U.S.A.

# Do you know Mr. E. J. Nankivell

CONTRIBUTES SEVERAL PAGES  
EACH MONTH TO

## THE CAPTAIN

A MAGAZINE  
FOR BOYS & 'OLD BOYS'

6<sup>d</sup>

CONSISTING OF

Helpful Articles on Postage  
Stamp Collecting for  
Beginners  
and General Collectors.

Illustrated Biographies of  
Eminent Collectors.  
Dictionary of Philatelic  
Terms.

A Detailed Descriptive and  
Illustrated List  
of Notable New Issues.

Answers to Correspondents,  
&c.



### THE "CAPTAIN"

Is the most popular Magazine of its kind, and appeals to every Public School Boy and Old Boy wherever the English language is spoken.

You must, we think, come to the same conclusion as most of the leading Stamp Dealers have, and regularly take advantage of the Advertising Pages of this 6d. Monthly.

WRITE FOR A FREE COPY AND FULL PARTICULARS.

---

THE ADVT. MANAGER, GEORGE NEWNES, Ltd.,  
3-12 SOUTHAMPTON STREET, STRAND, LONDON, W.C.



---

THE

---

# STAMP COLLECTORS' ANNUAL.

A YEAR BOOK OF PHILATELY.

<b>1904 Edition</b> <b>1/6 Post Free.</b>	<b>1905 Edition</b> <b>1/2 Post Free.</b>
----------------------------------------------	----------------------------------------------

<b>1906 Edition</b> <b>1/2 Post Free.</b>	<b>1907 Edition</b> <b>1/2 Post Free.</b>
----------------------------------------------	----------------------------------------------

THE SET OF FOUR DIFFERENT EDITIONS,  
Price 4/6, Post Free.

---

Office of the Stamp Collectors' Annual,  
7 SOUTHAMPTON ROW, LONDON, W.C.

---

**REAL BARGAINS.** 

5000 DIFFERENT CHEAP SETS, ON VIEW AT

**BLUETT'S Stamp Shop,**  
**432 STRAND, LONDON.**



**The Brightest, Biggest,  
Best 1d Stamp Paper .**

— IS THE —

# **Stamp Collectors'**

# **—Fortnightly—**

## **and International Stamp Advertiser.**

**Conducted by PERCY C. BISHOP.**

The "S.C.F." is the Official Organ of many leading Philatelic Societies and all the Principal Exchange Clubs. A specimen copy (1½d) will be sent, post free, to any reader of the Annual applying for same.

*Address:*

**The MANAGER,**

**"Stamp Collectors' Fortnightly,"**

**63 and 64 Chancery Lane,**

**LONDON, W.C.**



# THIS IS THE STAMP SHOP FOR BARGAINS.

---

Selections of Stamps sent on approval at 50 per cent. discount off Gibbons. Send for our latest price list, post free. Lists of Wants receive prompt attention.



Collections and Duplicates purchased to any amount. A fine collection always on sale.

This is an illustration of our well-known 'King William' Pocket Duplicate Book, oblong shape, cloth cover, post free, 7d.

---

## LEWIS MAY & CO.,

15 KING WILLIAM STREET.

CHARING CROSS, LONDON, W.C.

Telephone 6083 Gerrard.

(Three Doors from Gatti's Restaurant).

---

## GREAT BRITAIN.

Specialists Want Lists promptly filled.

Selections against Deposit or References only.

---

## I. J. BERNSTEIN,

Member MANCHESTER, BIRMINGHAM, and BERLIN SOCIETIES,

9 Albert Square, MANCHESTER.

TELEGRAPHIC ADDRESS—  
"NULLIFIED, LONDON"

TELEPHONE  
4424 GERRARD.

# GLENDINING & Co.,

— LIMITED. —

**7 ARGYLL STREET, —**  
**Regent Street, London, W.**

---

Auctioneers and Valuers of Coin Collections,  
Medal Collections, Postage Stamp Collections.

Old China Engravings, . . .

Antique Property of all kinds.

---

Weekly Auction Sales of Coins and Medals, Oriental  
Fine Art, Violins, and Miscellaneous Property. . . . .

*Sales by Private Treaty promptly arranged.*

PERIODICAL SALES BY AUCTION OF —

# Rare Postage Stamps

... Held by MESSRS. ...

## VENTOM, BULL, & COOPER

(WHO ORIGINATED THEM IN THIS COUNTRY), at the

**LOUDOUN HOTEL, Surrey Street, STRAND, W.C.**

(Close to the Temple Station on the District Railway).

---

Messrs. VENTOM, BULL, & COOPER beg to announce that their dates for the ensuing Season are as follows:—

---

### DATES OF SALES, 1908.

---

February 13 and 14 and 27 and 28; March 12 and 13 and 26 and 27;  
April 9 and 10 and 23 and 24; May 7 and 8 and 21 and 22; June 11 and 12.

These Sales are attended by all the principal known Collectors and Dealers and afford the best means of disposing of collections and rarities, the prices obtained being most satisfactory to owners. It is advisable that owners desirous of obtaining special days of sale should communicate as early as possible, as the dates are being rapidly filled up.

Owing to the large number of applications that the Auctioneers receive from America and the Continent for their Catalogues, these are issued, when practicable, one month before the date of Sale. In order to facilitate this arrangement, owners intending to include Stamps should forward them at the earliest possible moment. The greatest care is requisite in the preparation of these Catalogues, so that a correct and comprehensive description of the Stamps may be given.

### VALUATIONS MADE IF REQUIRED.

Advances made on Collections pending Realization if desired.

CATALOGUES OF ALL SALES may be obtained of

**Messrs. VENTOM, BULL, & COOPER,**

(Philatelic Department), 35 OLD JEWRY, LONDON, E.C.

Telegraphic Address: "VENTOM, LONDON."

Telephone Number: 3392 CENTRAL.

ESTABLISHED 1761.

**A Great Variety  
of All Issues of**

# **SARAWAK**

---

STAMPS, used and unused, at very moderate prices  
Practically everything in stock, including—

**Entire Sheets, Errors, Proofs,  
Minor Varieties, Imperf. Varieties,  
Wmk. Varieties, Five Type Varieties.**

---

**SEND US YOUR WANT LIST. OUR PRICES ARE MOST REASONABLE.**

Approval selections will be sent  
to any reader of this paper. . .

---

## **POSTMARKS.**

---



Did you know that British Stamps were used Abroad?  
A List of the Postmarks will be found in this Annual.

Look through your old correspondence,  
and if you find any send them to us  
and we will pay you a good price.

We particularly want South and Central  
. . America and British West Indies. . .

---

## **CHAS. NISSEN & Co.,**

— 7 Southampton Row, LONDON, W.C. —

Telephone 5181 Holborn.

(Three doors from High Holborn).

THE   
POSTAGE STAMPS OF  
—SARAWAK,—

With a History of the Post Office  
in Sarawak from 1869—1906, . . .

— BY —

FRED. J. MELVILLE,

President of the Junior Philatelic Society.

—  
WITH COLLOTYPE PLATES AND ILLUSTRATIONS,

PRICE 1/2, POST FREE.

—  
CHAS. NISSEN & CO.,

7 SOUTHAMPTON Row, LONDON, W.C.

TELEPHONE 5181 HOLBORN.

I have bought the **Largest Stamp Collection existing in Germany**, formed by

**Mr. MARTIN SCHROEDER, Leipzig.**

**This celebrated well-known Collection** of Postage Stamps, one of the most prominent in the world, representing a value of more than

**THIRTY THOUSAND POUNDS STERLING,**

which has been rewarded at the International Philatelic Exhibitions at Paris, Berlin, and London by Gold Medals, is contained in 66 Albums, and comprises, of course, **an immense and magnificent collection of the finest stamps, including the first Rarities, many of them in several copies,** and the great bulk in very good or in Mint condition.

The Schroeder-Collection is a **General Collection**, and contains therefore **not only Stamps of Great Britain and her Colonies**, but Collectors of **every other Country**, too, will find a rich selection to fill their wants.

The Schroeder-Collection, in addition with another collection of M.200,000, brings up my superb stock to the enormous value of **Two Million Marks.**

**Buyers who desire to see any Stamps of this great Collection should write me their names, let me know their wishes, and send Want Lists.**

**PAUL KOHL, Ltd., Chemnitz, Saxony.**

---

**COMMISSIONS EXECUTED** at all **STAMP AUCTIONS.**

**TERMS—1/8 per Lot, including careful examination and valuation of Lots.**

**SINGLE AND MIXED LOTS** examined and accurately described prior to **Sales.** Terms, 6d. per Lot.

**SPECIAL TERMS FOR LARGE MIXED LOTS AND COLLECTIONS.**

---

**GEORGE LOVERIUS,**

**PHILATELIC COMMISSION AGENT,**

**37 Oakley Square, LONDON, N.W.**

— Important to all Collectors. —

# FREDK. R. GINN, 143 Strand, London, W.C.

Established 1880.

Silver Medal, London, 1897.

## **SPECIALITY: HIGHEST CLASS STAMPS.**

Finest Stock. Cheapest Copies. Cheapest Prices.

### **NEW DEPARTMENT—Stamps on Approval**

A Marvellous Development. Important to Foreign and Colonial Collectors. Special arrangements have now been completed for the supply of APPROVAL SELECTIONS of the HIGHEST CLASS at 35 to 50 per cent. below current Catalogue quotations. **Want Lists solicited.**

No connection with any other firm whatever.

Serious and Advanced Collectors' attention is drawn to this advertisement. All copies are the finest obtainable, stamps that are perfect in every way only being stocked. Customers may have no fear of any doubtful or, in the case of unused stamps, cleaned specimens being sold to them.

## **WANTED TO BUY FOR CASH DOWN.**

I have received instructions from a client to invest **£10,000** for him in early **Imperforate** Rarities of Colonial.

Especially Wanted, used and unused **Sydney Views, Laureated Issues of New South Wales, Early Mauritius, Ceylon, New Zealand, Tasmania, Cape of Good Hope, &c., &c.** Fine Copies only, in Singles, Pairs, and Blocks.

All the greatest Rarities wanted.

All Dealers and Collectors are invited to submit on approval Really Fine Pieces of Rarities.

Unique opportunity to realise for cash down. No waiting, and no commission to pay.

## **WANTED TO BUY—HAWAII.**

All issues of the type-set stamps with figures in centre, **1, 2, and 5 cents.** (Gibbons' Nos. 201 to 223).

All varieties on all the different papers wanted in singles, pairs, blocks, and entire sheets.

Will all English and Foreign Dealers and Collectors note this, and send me all they may have at once, stating lowest possible price? I guarantee to reply by return post certain, and am prepared to buy to any amount.

### **To Collectors with Duplicates of Hawaii.**

These are often cast aside as forgeries and worthless. You may have many valuable stamps amongst them. Send any you have to me and I will advise you, and, if genuine, make cash offer for them. Many hundreds have been found genuine in this way, and large sums have been paid to their fortunate owners.

## **BARGAIN OFFER—MAURITIUS.**

Provisional, 1902, Express Delivery, 15 cents, ultramarine. The very rare type. Gibbons' No. 202. "Mint," 5/- each; postally used, 6/- each, post free. This is really a rarity, very few being printed. Only a few in stock.



— Important to all Collectors.

## FREDK. R. GINN, 143 Strand, London, W.C.

Established 1880

Silver Medal, London, 1897

### SPECIALITY: HIGHEST CLASS STAMPS.

Finest Stock.      Cheapest Copies.      Cheapest Prices.

#### NEW DEPARTMENT Stamps on Approval.

A Marvellous Development. Important to Foreign and Colonial Collectors. Special arrangements have now been completed for the supply of APPROVAL SELECTIONS of the HIGHEST CLASS at 35 to 50 per cent below current Catalogue quotations. **Want Lists solicited.**

No connection with any other firm whatever.

Serious and Advanced Collectors' attention is drawn to this advertisement. All copies are the finest obtainable, stamps that are perfect in every way and being stocked. Customers may have no fear of any doubtful or, in the case of misused stamps, cleaned specimens being sold to them.

### WANTED TO BUY FOR CASH DOWN.

I have received instructions from a client to invest **£10,000** for him in early **Imperforate** Rarities of Colonial.

Especially Wanted, used and misused **Sydney Views, Laureated Issues of New South Wales, Early Mauritius, Ceylon, New Zealand, Tasmania, Cape of Good Hope, &c., &c.** Fine Copies only, in Singles, Pairs, and Blocks.

All the greatest Rarities wanted.

All Dealers and Collectors are invited to submit on approval Really Fine Pieces of Rarities.

Unique opportunity to realise for cash down. No waiting, and no commission to pay.

### WANTED TO BUY HAWAII.

All issues of the type-set stamps with figures in centre, **1, 2, and 5 cents.** (Gibbons' Nos. 201 to 223).

All varieties on all the different papers wanted in singles, pairs, blocks, and entire sheets.

Will all English and Foreign Dealers and Collectors note this, and send me all they may have at once, stating lowest possible price? I guarantee to reply by return post certain, and am prepared to buy to any amount.

#### To Collectors with Duplicates of Hawaii.

These are often cast aside as forgeries and worthless. You may have many valuable stamps amongst them. Send any you have to me and I will advise you, and, if genuine, make cash offer for them. Many hundreds have been found genuine in this way, and large sums have been paid to their fortunate owners.

### BARGAIN OFFER—MAURITIUS.

Provisional, 1002, Express Delivery, 15 cents, ultramarine. The very rare type, Gibbons' No. 202, "Mint," 5/- each; postally used, 6/- each post free. This is really a rarity, very few being printed. Only few in stock.

# Messrs. PLUMRIDGE & CO.,

---

STAMP AUCTIONEERS and  
COMMISSION AGENTS, . . .

63 and 64 CHANCERY LANE,  
LONDON, W.C.

**OLD AUCTION SALES** on each alternate **Thursday** and **Friday**  
during the Season—September to July.

Their Sales are attended by most of the Leading Collectors and Dealers, and Catalogues are issued in ample time to enable Clients residing abroad to send bids.

Philatelists who may contemplate disposing of their collections should communicate with us at once if prompt inclusion is desired. Our inclusive Commission Charge, **which is the lowest quoted by any of the leading Auctioneers, is 10 per cent.**

Special arrangements made for important Collections or Dealers' Stocks.

**Immediate Cash Advances to any amount.**

**Settlements at latest within  
14 days from date of Sale.**

**PRIVATE TREATY  
DEPARTMENT. . .**

Collections and Single Rarities can be advantageously disposed of without delay through our Private Treaty Department. Settlements made immediately on completion of Sale.

TELEGRAPHIC ADDRESS—"PLUMVERE, LONDON."  
TELEPHONE—3473 CENTRAL.

# British Stamps Used Abroad

---

SELECTIONS ON APPROVAL

PRICES BEATING ANY COMPETITION.

---

## APPROVAL BOOKS OF BRITISH STAMPS.

- |                                                                      |                                             |
|----------------------------------------------------------------------|---------------------------------------------|
| 1. Line Engraved, imperf., 1840-1.                                   | 15. Proofs and Essays.                      |
| 2. 1d black, 1d red, and 2d blue for reconstructing plates.          | 16. College Stamps.                         |
| 3. Line Engraved, perforated.                                        | 17. $\frac{1}{2}$ d and 1d Control Letters. |
| 4. Line Engraved, imperf. and perf., with rare and scarce postmarks. | 18. Official Stamps                         |
| 5. Line Engraved, plate numbers.                                     | 19. Railway Letter Fee Stamps.              |
| 6. Line Engraved, perf., for reconstructing plates.                  | 20. Railway Parcel Stamps.                  |
| 7. Line Engraved, errors and varieties.                              | 21. Circular Delivery Stamps.               |
| 8. Line Engraved, with O.U.S. and firm's name on back.               | 22. Fiscal Stamps.                          |
| 9. Surface Printed Series, $\frac{1}{2}$ d to £5.                    | 23. Tax Stamps.                             |
| 10. Surface Printed Series, plate numbers.                           | 24. Envelopes, entire.                      |
| 11. Surface Printed Series, for reconstructing plates.               | 25. Envelopes, cut square.                  |
| 12. King's Head Series.                                              | 26. Envelopes, different die numbers        |
| 13. Postal Fiscal Stamps.                                            | 27. Telegraph Forms.                        |
| 14. Telegraph Stamps.                                                | 28. Mulready Caricatures.                   |
|                                                                      | 29. Vaccination Certificates.               |
|                                                                      | 30. Official Newspaper Stamps.              |
|                                                                      | 31. Registered Envelopes.                   |
|                                                                      | 32. Envelopes with firm's name.             |
|                                                                      | 33. Compound Envelopes.                     |
|                                                                      | 34. Newsbands,                              |
|                                                                      | 35. Post Cards.                             |
|                                                                      | 36. Postage Stamps Used Abroad.             |

Want List filled from any Catalogue, and sent on Approval.

---

## APPROVAL SELECTIONS OF ALL COUNTRIES. . .

PRICES AVERAGE LESS THAN HALF-CATALOGUE.

---

**CHAS. NISSEN & Co.,**  
7 SOUTHAMPTON ROW, LONDON, W.C.

Telephone 5181 Holborn.

