

THE *Brawford 529(2)*
POSTAGE STAMP

CATALOGUE,

GIVING THE DATE OF ISSUE, COLOR, SHAPE AND VALUE OF EVERY POSTAGE STAMP
THAT HAS EVER BEEN ISSUED BY ANY GOVERNMENT IN THE WORLD.

PROFUSELY ILLUSTRATED

WITH THE TYPE OF NEARLY EVERY STAMP, AND GIVING THE PRICES AT WHICH MOST
OF THEM CAN BE PURCHASED CLEAN OR CANCELED OF

J. W. SCOTT & CO.



Thirtieth Edition.

THOROUGHLY REVISED AND CORRECTED AND FULLY BROUGHT UP TO THE DAY OF
GOING TO PRESS.

PRICE 25 CENTS,

OR WITH SUPPLEMENT OF ILLUSTRATIONS 50 CENTS.

NEW YORK:

J. W. SCOTT & CO., 75 & 77 NASSAU STREET.

[1875.]

P R E F A C E .

There is probably no amusement of the present day more popular and instructive than that of collecting Foreign Postage Stamps, and the hope that we can add to the present number of collectors has induced us to write these few lines. Postage Stamps were first issued by Great Britain in the year 1840, and from time to time have been adopted by other countries, our own Government first issuing them in 1847, and now there is scarcely a country in the world that has not acceded to this method of pre-paying postage, so that it must be at once apparent to every intelligent person, that there is a vast deal of information gained from the study of these labels, coming as they do from every part of the world, and bearing on their face, either the arms of the State or portrait of the ruler, and in nearly all cases the currency of the country where used, so that unconsciously the collector is made acquainted with the Geography, History and Currency of the various nations.

Were we to enumerate all the advantages to be gained from the study of Philately, we should far exceed the limits of the present work, so we must refer our readers for information to the JOURNAL OF PHILATELY.

The great and increasing demand for "locals," as the stamps of the various private express companies are incorrectly called, has induced our publishers to incorporate a complete list of these interesting labels in the present edition (the thirtieth) of "THE ILLUSTRATED POSTAGE STAMP CATALOGUE," and it is hoped that it will be the means of familiarizing collectors with the appearance of these rare stamps, nearly all of which are worth, at present, from one to ten dollars each; our publishers being prepared to pay nearly the full retail value for all of them; they hope that the publication of these facts will stimulate active search for these rarities, and bring such quantities of genuine original locals from their hiding places as to enable them to supply originals at a moderate price.

ABBREVIATIONS, &C.

LOCATION OF COUNTRIES.

A.—Asia. AF.—Africa. E.—Europe. N. A.—North America. O.—Oceanica. S. A.—South America. W. I. I.—West India Islands.

Only the first letter of the money used in the country is given in the column, but the full name with its relative value will be found directly under the heading of each nation.

The first column of figures gives the original value of the stamps in the country when issued, with the abbreviation of the money used; then follows the date; where there are figures in parenthesis, thus (t 530), it refers to an engraving of the same number in a supplement accompanying the 50 cent edition; after the color is the price we charge for the stamp unused or clean; the last column gives our price for the stamp used or cancelled, of these the best or cleanest copy we have in stock at the time of receiving the order will invariably be sent.

In the pages devoted to the U. S. Locals, Ori. (original) and Rep. (reprint) will be found at the head of the column, in place of New and Used. In these stamps there is no difference in the value between an used or unused stamp (many preferring the latter), which has allowed us to utilize the columns in giving the value of those local stamps which have been reprinted from the original plates, thus enabling collectors to get genuine stamps at a nominal price.

In a few places, tri. (triangle), rect. (rectangle), cir. (circle), and ov. (oval), will be found which refer to the shape of the stamp in the same line with it.

SPECIAL NOTICE.

Persons ordering Stamps from this List will greatly oblige by attending to the following:

Orders should be written *plainly* with the name of country, date of issue, color, value and price.

Purchasers are particularly requested to give full name and address each time.

REMITTANCES.—In sending money by Post, always get the amount in as few pieces as possible. When the order amounts to \$3 or upwards, always Register the Letter, or send by Banker's draft, or P. O. O. (the cost of which can be deducted from the amount) payable to J. W. SCOTT & CO., New York. Unused Postage Stamps of low denomination will be received from parties residing abroad in sums not exceeding £1 or \$5, and above that amount by Banker's Draft.

POSTAGE.—All letters must be fully prepaid, and contain sufficient stamps for return postage.

GUARANTEE.—Every stamp sold by us is warranted genuine, and a written guarantee will be given with all stamps valued at \$2 and upwards, if required.

UNITED STATES STAMPS.—J. W. Scott & Co., wish it distinctly understood that all the U. S. Stamps sold by them are warranted genuine original impressions, and not the spurious reprints and imitations lately circulated to deceive collectors.

TERMS NET CASH.—No discount can be allowed from the prices named in this list, as they will be found as low as it is possible to sell genuine stamps.

AUCTION SALES OF STAMPS.—J. W. Scott & Co., are also prepared to dispose of large collections of stamps at auction, in New York or London, for the owner. For full particulars see "American Journal of Philately," or inquire of J. W. Scott & Co. All auction sales of stamps are advertised in the above Journal, and catalogues sent free to subscribers.

THE
POSTAGE STAMP CATALOGUE,

A DESCRIPTIVE LIST OF ALL POSTAGE STAMPS EVER ISSUED BY ANY GOVERNMENT
IN THE WORLD, GIVING THEIR DATES OF ISSUE, COLOR AND VALUE.

ILLUSTRATED WITH THE TYPES OF EVERY SERIES,

AND GIVING THE

PRICES, USED AND UNUSED, AT WHICH THEY CAN BE OBTAINED OF THE PUBLISHERS,

BEING A USEFUL GUIDE FOR ARRANGING STAMPS IN

SCOTT'S CELEBRATED POSTAGE STAMP ALBUMS.

THIRTIETH EDITION,

THOROUGHLY REVISED AND CORRECTED,

UNITED STATES. N. A.

100 CENTS = 1 DOLLAR.

PROVISIONAL ISSUES.

Brattleboro.



5 c. 1845, buff
(Photograph of above.) 10
NOTE.—Printed in sheets of ten varieties.

New Haven.

5 c. 1845, (t 1) env. red

New York.

5 c. 1845, (t 2) black 1 00 1 00

Providence.



5 c. 1845, black
10 c. " "

NOTE.—Printed in sheets of twelve. Eleven varieties of the 5 c. and one 10 c.

St. Louis.



5 c. 1845, black
10 c. " " 5 00
20 c. " " "

NOTE.—There are three varieties of each of these.

GENERAL ISSUE.



5 c. 1847, brown 25 10
10 c. " (t 3) black 1 00 50

Head in Oval, except 90 c.

1 c. 1851, (t 4) blue 2 2
3 c. " (t 5) red 2 1
5 c. 1856, (t 6) brown
10 c. 1855, (t 7) green 10 3
12 c. 1851, (t 8) black 10 8
24 c. 1857, (t 9) lilac 20 20
30 c. " (t 10) orange 25
90 c. " (t 11) blue 75

FOR DELIVERY BY CARRIERS.



1 c. 1851, black
1 c. " variety, "
1 c. " red

Head Franklin.

1 c. 1851, blue on pink
(t 12)

Eagle in Oval.

1 c. 1857, (t 13) blue 10

GENERAL ISSUE.

U. S. and value in corners. With and without rectangular embossing on back.

1 c. 1861, blue 5 1
3 c. " red 5 1
5 c. " brown 10 2
10 c. " green 15 1
12 c. " black 25 1

New Used

24 c. 1861, lilac 60 5
30 c. " orange 60 10
90 c. " blue 2 00 25
2 c. 1863, black 3 1
15 c. 1866, " 25 2

Various Designs.

1 c. 1869, (t 14) buff 5 5
2 c. " (t 15) brown 5 3
3 c. " (t 16) blue 6 1
6 c. " (t 17) blue 10 3
10 c. " (t 18) yellow 20 5
12 c. " (t 19) green 25 5
15 c. " brown and
(t 20) blue 30 10
24 c. " green and pur-
(t 21) ple 25
30 c. " blue and car-
(t 22) mine 25
90 c. " black and car-
(t 23) mine

*Head to left in Oval, with and with-
out rectangular embossing on back.*

1 c. 1870, (t 24) blue 2 1
2 c. " (t 25) brown 3 1
3 c. " (t 26) green 4 1
6 c. " (t 27) red 8 1
7 c. 1871, vermilion
(t 28) 10 3
10 c. 1870, (t 29) brown 12 1
12 c. " dark purple
(t 30) 15 1
15 c. " orange (t 31) 18 3
24 c. " (t 32) purple 30 5
30 c. " (t 33) black 36 3
90 c. " (t 34) carmine 1 00 5

NEWSPAPER STAMPS.

Very large stamps.

5 c. 1865, (t 39) blue 50
5 c. " variety 50
10 c. " green 25
25 c. " red 50

PRICE CATALOGUE



2 c. 1875, black
New Used



12 c. 1875, carnation

24 c. " "
36 c. " "
48 c. " "
60 c. " "
72 c. " "
84 c. " "
96 c. " "
Similar to above, different figures
in each



3 c. 1853, White paper, four types, red, green, purple

6 c. " " four types, red, green, purple
6 c. " " four types, green, purple, red
10 c. " " variety, green
10 c. " " variety, green
3 c. 1853, Buff paper, red



New Used

1 c. 1857, (136) blue
3 c. " " blue and red
6 c. " " red
10 c. " " green
Buff paper, green
1 c. 1857, blue (136)
3 c. " " red
4 c. " " blue and red
6 c. " " red
10 c. " " green
Buff paper, blue (136)
1 c. 1857, blue (136)
3 c. " " red
4 c. " " blue and red
6 c. " " red
10 c. " " green



White paper, pink 10
3 c. 1861, pink 10
Buff paper, pink 10
3 c. 1861, pink 10
Blue paper, pink 10
10 c. " (next to) green 15
6 c. " " " " 15
3 c. 1861, pink 10



15
12 c. " " green
12 c. " " red and blue
20 c. " " red and blue
24 c. " " red and black
40 c. " " red and black



2 c. 1863, black
2 c. " black, brown
pp.



New Used

3 c. 1864, pink 5
6 c. " " brown 10
6 c. " " violet 12
Buff Paper, pink 5
3 c. 1864, pink 5
6 c. " " brown 10
6 c. " " violet 12
1 c. 1864, pink 5
3 c. " " brown 10
6 c. " " violet 12
Buff Paper, pink 5
3 c. 1864, pink 5
6 c. " " brown 10
6 c. " " violet 12
Buff Paper, pink 5
3 c. 1864, pink 5
6 c. " " brown 10
6 c. " " violet 12



Yellow 25
Brown 25
Red 25
Blue 20
Green 20
Rose 20
White paper, yellow 25
Lemon paper, yellow 25
1 c. 1870, (137) blue 5
2 c. " (138) brown 10
3 c. " (139) green 10
6 c. " (140) red 10
10 c. " (141) brown 15
12 c. " (142) purple 15
15 c. " (143) orange 20
24 c. " (144) purple 35
30 c. " (145) black 50
40 c. " (146) carnation 1 50

1 c. 1870, (137) blue 5
2 c. " (138) brown 10
3 c. " (139) green 10
6 c. " (140) red 10
7 c. " Vermillion
12 c. " (141) brown 15
15 c. " (142) purple 15
20 c. " (143) orange 20
24 c. " (144) purple 35
30 c. " (145) black 50
40 c. " (146) carnation 1 50
Lemon paper, yellow 25
1 c. 1870, (137) blue 5
2 c. " (138) brown 10
3 c. " (139) green 10
6 c. " (140) red 10
7 c. " Vermillion
12 c. " (141) brown 15
15 c. " (142) purple 15
20 c. " (143) orange 20
24 c. " (144) purple 35
30 c. " (145) black 50
40 c. " (146) carnation 1 50

Deal, same head as some issue and
value adheres.

		New Used	
<i>Salmon paper.</i>			
3 c.	1870, (t 39) green	5	1
6 c.	" (t 40) carmine	10	
12 c.	" (t 42) purple	15	
15 c.	" (t 43) orange	50	
24 c.	" (t 44) purple	35	
30 c.	" (t 45) black	50	
90 c.	" (t 46) carmine	1	50
1874 ISSUE.			
<i>Similar to last.</i>			
1 c.	1874, blue	10	5
2 c.	" brown	10	5
3 c.	" green	10	5
6 c.	" carmine	15	5
1875 ISSUE.			
1 c.	1875, blue	2	1
2 c.	" brown	3	1
3 c.	" green	3	1
6 c.	" carmine	7	3
7 c.	" vermilion		
10 c.	" brown		
12 c.	" violet		
15 c.	" orange		
24 c.	" purple		
30 c.	" black		
90 c.	" carmine		

		New Used	
10 c.	1873, vermilion	25	
12 c.	" "	3	
15 c.	" "	3	
24 c.	" "	5	
30 c.	" "	10	
90 c.	" "	15	
JUSTICE.			
1 c.	1873, purple	10	
2 c.	" "	10	
3 c.	" "	5	
6 c.	" "	5	
10 c.	" "	15	
12 c.	" "	10	
15 c.	" "	10	
24 c.	" "	25	
30 c.	" "	10	
90 c.	" "	10	
NAVY.			
1 c.	1873, blue	5	
2 c.	" "	5	
3 c.	" "	2	
6 c.	" "	3	
7 c.	" "	25	
10 c.	" "	10	
12 c.	" "	5	
15 c.	" "	10	
24 c.	" "	15	
30 c.	" "	15	
90 c.	" "	50	



New Used

2 d.	1873, black and green	
5 d.	" black and green	
10 d.	" black and green	
20 d.	" black and green	

		New Used	
POST OFFICE.			
			
1 c.	1873, black	5	
2 c.	" "	2	
3 c.	" "	1	
6 c.	" "	1	
10 c.	" "	10	
12 c.	" "	10	
15 c.	" "	10	
24 c.	" "	5	
30 c.	" "	5	
90 c.	" "	10	

		New Used	
TREASURY.			
1 c.	1873, brown	2	
2 c.	" "	1	
3 c.	" "	1	
6 c.	" "	1	
7 c.	" "	5	
10 c.	" "	5	
12 c.	" "	2	
15 c.	" "	5	
24 c.	" "	10	
30 c.	" "	5	
90 c.	" "	5	

		New Used	
WAR.			
1 c.	1873, red	1	
2 c.	" "	10	
3 c.	" "	1	
6 c.	" "	1	
7 c.	" "	15	
10 c.	" "	15	
12 c.	" "	15	
15 c.	" "	5	
24 c.	" "	5	
30 c.	" "	5	
90 c.	" "	5	

OFFICIAL STAMPS.
All except Post Office same design as General Issue, with Name of Department above.

		New Used	
			
AGRICULTURE.			
1 c.	1873, straw	10	
2 c.	" "	5	
3 c.	" "	5	
6 c.	" "	5	
10 c.	" "	25	
12 c.	" "		
15 c.	" "		
24 c.	" "		
30 c.	" "	25	

		New Used	
EXECUTIVE.			
1 c.	1873, carmine		
2 c.	" "		
3 c.	" "		
6 c.	" "		
10 c.	" "		

		New Used	
INTERIOR.			
1 c.	1873, vermilion	2	
2 c.	" (t 48) "	2	
3 c.	" "	1	
6 c.	" "	1	

		New Used	
ENVELOPE STAMPS.			
			
2 c.	1873, black	10	
3 c.	" "	2	
6 c.	" "	20	
2 c.	1874, "	5	
3 c.	" "	2	
6 c.	" "	5	

		New Used	
ENVELOPE STAMPS.			
1 c.	1873, red	2	
2 c.	" "		
3 c.	" "	2	
6 c.	" "	5	
10 c.	" "		
12 c.	" "	10	
15 c.	" "		
24 c.	" "		
30 c.	" "		

NOTE.—These are stated to exist on three colors of paper, but we have only seen the low values on that number.

	Rep. Ori.		Rep. Ori.		Rep. Ori.
LOCAL STAMPS.		ENVELOPE STAMPS.		CLARK & CO.	
ADAMS & CO'S EXPRESS.		Eagle, (t 92) blue on buff	10	1 c. (t 121) red on yellow	
25 c. (t 49) black	25	" " pink	25	CORNWELL'S MADISON Sq. P. O.	
25 c. (t 50) black on blue		2 c. (t 93) red on buff	2	(t 122) red	
AMERICAN EXPRESS CO.		2 c. (t 94) address erased		CROSBY'S CITY POST.	
2 c. (t 51) black on green		red	2	(t 123) figure, carmine	5
AMERICAN LETTER MAIL CO.		BRADY & CO.		CUNNING'S CITY POST.	
5 c. (t 52) blue		(t 95) red on yellow		2 c. (t 124) black on pink	
5 c. black	1 00	(t 96) lilac		2 c. " on yellow	
5 c. (t 53) black	50	BRAINARD & CO.		2 c. " on green	
BARNARD'S CARIBOO EXPRESS.		BROADWAY P. O.		C. & W. BRIDGE DESPATCH.	
Paid (t 54) black on red		(t 98) black	1 00	(t 125) bronze on green	
Collect (t 55) " on green		gold on black		" vermilion	
BARW'S DESPATCH.		BRONSON & FORBES.		DEMINGS PENNY POST.	
(t 56) red		(t 99) black on green		(t 126) black	
BERFORD & CO'S EXPRESS.		BROOKLYN CITY EXPRESS POST.		DUPUY & SCHENCK.	
3 c. (t 57) black		1 c. (t 100) blue	5	1 c. (t 127) black	
5 c. (t 58) green		2 c. crimson	5	EAGLE POST.	
10 c. (t 59) purple		2 c. pink	5	(t 128) red	
25 c. (t 60) red		2 c. blue	5	blue	
D. O. BLOOD & CO.		2 c. orange		(t 129) black	
(t 61) black		BROWN & CO'S CITY POST.		EAST RIVER P. O.	
(t 62) "		1 c. (t 101) black		23 Ave. D, (t 130) black	
(t 63) "		2 c. (t 102) "		23 " (t 131) green	1 00
Kochersperger & Co.	25	BROWN'S EASTON DESPATCH.		18 " "	
(t 64) black		1 c. (t 103) black on pink		ESSEX LETTER EXPRESS.	
(t 65) black on green		2 c. (t 104) black		2 c. (t 132) vermilion	
(t 66) " "		BROWN & MCGILL.		FLOYD'S PENNY POST.	
For the P. O. (t 67) black on blue		(t 105) blue		1 c. (t 133) head, blue	5 1 00
1 c. des. (t 68) black on bronze	25	black		1 c. " brown	5
Penny Post, (t 69) gold on lilac	25	CALIFORNIA PENNY POST CO.		FRAZER & CO.	
" blue on lilac	50	5 c. (t 106) blue		2 c. (t 134) black on pink	
" bronze on black	50	5 c. (t 107) large, "		GORDON CITY EXPRESS.	
P. O. (t 70) black on bronze	1 00	7 c. (t 108) vermilion		2 c. (t 135) green	
Paid (t 71) black on bronze		CARNE'S CITY LETTER EXPRESS.		GRAFLIN'S BALTIMORE DESPATCH.	
For P. O. (t 72) black		(t 109) pink	25	1 c. (t 136) black	
" (t 73) "		Name erased, "	50	HALE & CO.	
" (t 74) "		Surcharged X, "	1 00	5 c. 13 Court St. (t 137) red	
Despatch env. red on white		CARTER (G.) PAID DESPATCH.		5 c. " " blue	50
" red on buff		(t 110) black		5 c. " " "	25
(t 75) 26 & 28 red on white		CARRIERS DESPATCH.		HALL & MILLS.	
26 & 28 red on buff		1 c. (t 111) blue		Free despatch post	
(t 76) 28 S. 6 red on white		1 c. red		(t 138) green	
28 S. 6 red on buff		CHEVER & TOWLE.		G. A. Mills, "	
BOUTON'S.		5 c. (t 112) blue	5	HANFORD'S PONY EXPRESS.	
2 c. (t 77) oblong pink		CHICAGO PENNY POST.		2 c. (t 139) yellow	
Franklin, city, (t 78) green		1 c. (t 113) orange		HOYT'S LETTER EXPRESS TO ROCHESTER.	
Head (t 79) green	5 2 00	CITY DESPATCH.		Small oblong (t 140) vermilion	
" black	5 1 00	1 c. (t 114) black	5	HONOURS CITY POST.	
" (t 80) "	5 1 00	CITY DESPATCH POST.		Penny post (t 141) black	
" black on blue	2	2 c. (t 115) Washington green		City " "	
BOYCE'S CITY EXPRESS		3 c. Washington, white		2 c. city post, "	
2 c. (t 81) black on green		3 c. " green		2 c. " " paid "	
BOYD'S CITY EXPRESS.		3 c. " grey		HUMBOLDT'S EXPRESS.	
2 c. (t 82) large, green		3 c. " flesh		25 c. t 142) brown	
2 c. (t 83) heavy oval "		2 c. (t 116) C C at sides white		HUSSEY'S POST.	
2 c. (t 84) thin head "	1 00	2 c. C C at sides, green		Bank, 82 Broadway (t 143) blue	
2 c. (t 85) " figure "	25	2 c. " vermilion		Letter-box (t 144) black	25
2 c. (t 86) crested head green	25	2 c. " yellow		" red	
1 c. (t 87) " big figure, green	25	CITY DESPATCH.		Bank, 50 William St. (t 145) blue	
2 c. crested big figure green	10	(t 117) head, red		50 William St. (t 146) black	
2 c. (t 88) " variety, "	10	CITY EXPRESS, G. & H.		" red	10
2 c. (t 89) rough design green	10	Paid (t 118) black	25	\$1 per 100, (t 147) " black	25
2 c. rough design, red	5	423 Washington St. (t 119) blue		1 c. "one stamp" (t 148) red	25
2 c. white paper, "	5	5 c. (t 120) "			
1 c. (t 90) curved wing lilac	5				
2 c. curved wing, red	5				
1 c. (t 91) rough design, blue	5				
1 c. rough design, lilac	5				

	Rep. Ori.
1 c. (t 149) black	10
1 c. blue	
1 c. red	
1 c. green	
1 c. 1863. blue	25
1 c. " green	
1 c. " yellow	
1 c. " brown	
1 c. " blue	
2 c. " red	
2 c. " brown	
2 c. " black	
5 c. (t 150) on red	
10 c. bronze on green	
15 c. gold on black	
20 c. black on white	
25 c. gold on blue	
2 c. 1865. blue	10
2 c. 1867. "	
2 c. 1868. "	
2 c. 1870. "	10
2 c. 1871. "	
2 c. black	
JEFFERSON MARKET P. O.	
(t 151) pink	
blue	
JENKINS' CAMDEN DESPATCH.	
(t 152) black	5
JONES' CITY EXPRESS.	
(t 153) rose	
KIDDER'S CITY EXPRESS.	
(t 154) pale blue	5
2 c. green	
KINGMAN'S CITY EXPRESS.	
(t 155) black	
2 c. black on green	
LANGTON & Co.	
(t 155 a) black	
LETTER EXPRESS FREE.	
5 c. (t 156) pink	2 50
5 c. white	
5 c. green	
10 c. (t 157) pink	
10 c. variety, scarlet	
MAIL (HARTFORD).	
(t 158) yellow	
pink	
MARTIN'S CITY POST.	
(t 159) black	
MCINTIRE'S CITY POST.	
(t 160) pink	25
MENANT & Co's. EXPRESS.	
(t 161) red	
MESSENGERS UNION Sq. P. O.	
Fountain (t 162) green	
METROPOLITAN ERRAND CARRIERS.	
1 c. (t 163) red	5 10
5 c. " "	10 25
10 c. " "	10
20 c. " "	25
2 c. env. (t 164) "	10
METROPOLITAN P. O.	
(t 165) red	
1 c. blue	
(t 166) blue	
red	
N. Y. CITY EXPRESS POST.	
(t 167) green	
OVERTON & Co. EXPRESS.	
(t 168) black	15 00
PENNY POST.	
(t 169) blue	
1 c. (t 170) blue on blue	
1 c. (t 171) blue	
POMEROY'S LETTER EXPRESS.	
5 c. (t 172) yellow	1 00
5 c. blue	5
5 c. black	5

	Rep. Ori.
POST-OFFICE DESPATCH.	
1 c. (t 173) red on blue	
1 c. blue	
1 c. "	
PRICE'S CITY EXPRESS.	
(t 174) green	5
(t 175) "	
2 c. vermilion	
PRIEST'S PAID DESPATCH.	
(t 176) yellow	
red	
PRINCE'S LETTER DESPATCH.	
(t 177) black	25
ROBINSON & Co.	
(t 178) blue	
RUSSELL'S EIGHTH AVE. P. O.	
(t 179) black on green	
" red	
" brown	
vermilion	
STATEN ISLAND.	
(t 180) vermilion	
STEINMEYER'S CITY POST.	
(t 181) gray	
2 c. pink	
2 c. yellow	
STRINGER & MORTON'S CITY DESPATCH.	
Small obl. (t 182) black	
on gold	
SQUIER & Co. CITY LETTER DESPATCH.	
(t 183) black	
1 c. puce	
1 c. green	
SWARTS' CHATHAM Sq. P. O.	
(t 184) pink	1 00
red	5 50
black	5 50
(t 185) pink	
red	5 50
black	
blue	
black on green	
(t 186) blue	
TEESE & Co. PENNY POST.	
(t 187) blue	3
UNION SQUARE P. O.	
(t 188) green	
2 c. pink	50
U. S. MAIL PREPAID.	
(t 189) yellow	1 00
red	
U. S. P. O.	
(t 190) gilt on black	2 00
blue on white	
black on blue	
(t 191) L. S. pink	
L. P. "	
" blue	
UNITED STATES CITY DESPATCH POST.	
(t 192) sea green	25
WALTON & Co. CITY EXPRESS.	
pink	
WASHINGTON CITY DESPATCH.	
(t 193) violet	
blue	

	Rep. Ori.
WELLS, FARGO & Co.	
(t 194) brown	25
blue	25
red	15
" "	25
2 d. green	15
2 d. red	25
4 d. green	25
4 d. black	25
1 d. (t 195) blue	25
Oblong oval, black	
" " blue	
(t 196) "	25
(t 197) "	10
WESTTOWN.	
Small oval (t 198) gilt	
WESTERVELT'S POST.	
(t 199) flesh	5
lavender	5
WHITTLESEY'S EXPRESS.	
(t 200) red	
2 c. blue	
WINAN'S CITY POST.	
(t 201) white	2 00
yellow	
10 c. green	
20 c. vermilion	2 00
W. WYMAN.	
5 c. engine (t 202) black	10 00



ANGOLA.
Portuguese Colony in Africa.
1000 REIS = 1 MILRES.



	Rep. Ori.
5 r. 1870. black	
10 r. " yellow	15
20 r. " straw	20
25 r. " rose	25
50 r. " green	
100 r. " lilac	

ANTIGUA, W. I. I.
12 PENCE = 1 SHILLING.



1 p. 1802. pink	10
6 p. " green	10
1 p. 1867. red	6 5

ANTIOQUIA, S. A.
See United States of Colombia.

**ARGENTINE REPUBLIC,
S. A.**

100 CENTAVOS = 1 PESO



New Used

5 c. 1858,	red	20	
10 c. "	green	30	
15 c. "	blue	40	
5 c. "	large fig. red	75	
10 c. "	green	75	
15 c. "	blue	75	



5 c. 1862,	pink	20	15
10 c. "	green	30	
15 c. "	blue		



5 c. 1864,	rose	25	10
10 c. "	green	50	15
15 c. "	blue	50	20
5 c. 1866,	pink		10

Various Heads.

5 c. 1867,	red	15	5
10 c. "	(t 203) green	25	10
15 c. "	blue	50	15
1 c. 1873, (t 204)	violet	5	5
4 c. "	(t 205) brown		10
30 c. "	(t 206) orange		
30 c. "	(t 207) black		
30 c. "	(t 208) blue		

Corrientes.



1 r. 1856, (t 200)	blue	2 50	2 00
3 c. 1861,	"	1 00	
2 c. 1864,	green	2 00	
5 c. 1868,	yellow		
5 c. 1874,	pink		



AUSTRIA, E.

100 KREUZER = 1 FLORIN.



New Used

1 k. 1850,	yellow	5	
2 k. "	black	5	
3 k. "	red	2	
6 k. "	brown	2	
9 k. "	blue	2	



Similar to cut.

2 k. 1858,	yellow	5	
3 k. 1859,	green	15	
3 k. 1858,	black	15	
5 k. "	red	2	
10 k. "	brown	2	
15 k. "	blue	2	



2 k. 1861	yellow	5	
3 k. "	green	5	
5 k. "	red	2	
10 k. "	brown	2	
15 k. "	blue	1	



2 k. 1863,	yellow	2	
3 k. "	green	2	
5 k. "	pink	1	
10 k. "	blue	1	
15 k. "	brown	1	



2 k. 1867,	yellow	5	2
3 k. "	green	6	2
5 k. "	red	8	1

10 k. 1867,	blue	15	1
15 k. "	brown		2
25 k. "	violet		5
50 k. "	(t 210) flesh		25

NEWSPAPER STAMPS.



1 k. 1851,	blue	10	
10 k. "	yellow,	50	
50 k. "	red	50	

Arms in Square.

1 k. 1858,	blue	10	5
2 k. 1850,	green		10
2 k. 1858,	brown	10	5
4 k. "	"		

Different Designs.

1856,	(t 211) blue	20	10
1860,	(t 212) lilac	20	10
1861,	(t 213) lavender	10	5
1863,	(t 214) "	5	3
1867,	(t 215) violet	5	1

ENVELOPE STAMPS.

All the Envelope Stamps are the same type as the corresponding date of adhesives.

3 k. 1861,	green	5	
5 k. "	red	5	
10 k. "	brown		
15 k. "	blue		
20 k. "	orange		
25 k. "	brown		
30 k. "	violet		
35 k. "	brown		
3 k. 1863,	green	10	
5 k. "	red	2	
10 k. "	blue		
15 k. "	brown	5	
25 k. "	violet	15	
3 k. 1867,	green	10	5
5 k. "	red	15	2
10 k. "	blue		3
15 k. "	brown	25	5
25 k. "	violet		

**AUSTRIAN ITALY, E.,
and the Foreign
Branches of the Aus-
trian Post-Office.**

100 SOLDI = 1 FLORIN.

The designs are the same as the stamps of the same date Austria, with money altered.

Arms on Shield.

5 c. 1850,	yellow	15	
10 c. "	black	15	
15 c. "	red	3	
30 c. "	brown	3	
45 c. "	blue	3	

			New	Used
<i>Head to Left.</i>				
2 s. 1858,	yellow	25	5	
3 s. 1862,	green	25	15	
3 s. 1858,	black	25	15	
5 s. "	red		5	
10 s. "	brown		5	
5 s. "	blue		5	

<i>Head in Oval.</i>				
5 s. 1861,	red		5	
10 s. "	brown		10	

<i>Arms in Oval.</i>				
2 s. 1863,	yellow		5	
3 s. "	green		5	
5 s. "	pink		5	
10 s. "	blue		3	
15 s. "	brown		3	

FOR FOREIGN BRANCHES ONLY.

<i>Head in Large Circle.</i>				
2 s. 1867,	yellow		5	
3 s. "	green		5	
5 s. "	red		5	
10 s. "	blue		5	
15 s. "	brown		5	
25 s. "	violet		15	
50 s. "	(t 216) flesh		15	

ENVELOPE STAMPS.

<i>Head in Oval.</i>				
3 s. 1861,	green	10		
5 s. "	red	15		
10 s. "	brown	30		
15 s. "	blue	40		
20 s. "	orange	60		
25 s. "	brown	60		
30 s. "	violet	80		
35 s. "	brown	1 00		

<i>Arms in Oval.</i>				
3 s. 1863,	green	10		
5 s. "	red	15		
10 s. "	blue	25		
15 s. "	brown	30		
25 s. "	violet	40		

<i>Head in Large Circle.</i>				
3 s. 1867,	green			
5 s. "	red			
10 s. "	blue			
15 s. "	brown			
25 s. "	violet			

NEWSPAPER STAMPS.

<i>Same as same date Austria.</i>				
1 k. 1858,	black	50		
2 k. "	red	10		5
4 k. "	"	50		

Danube Steam Navigation Company.

<i>Anchor in Oblong Oval.</i>				
10 s. 1866,	lilac	50		
17 s. "	rose	75		
10 s. 1868,	green			



AZORES ISLANDS, E.

Portuguese Colony.
1000 REIS = 1 MILREIS.



5 r. 1868,	black			
10 r. "	yellow	10		
20 r. "	straw	10		
25 r. "	rose	15		
50 r. "	green	20		
80 r. "	orange	30		
100 r. "	lilac	50		
120 r. "	blue	75		10
240 r. "	lilac	1 25		



5 r. 1871,	black			
10 r. "	yellow	10		
20 r. "	straw	10		
25 r. "	rose	15		
50 r. "	green	20		
80 r. "	orange	30		
100 r. "	lilac	50		
120 r. "	blue	75		10
240 r. "	lilac	1 25		



BADEN, E.

60 KREUZERS = 1 GUILDER.



1 k. 1851,	buff	30		8
3 k. "	yellow	25		2
6 k. "	green	25		2
9 k. "	pink	25		2
1 k. 1853,	white	25		5
3 k. "	green	25		2
6 k. "	yellow	25		2
3 k. 1857,	blue	25		2

Arms on Shaded Ground.

1 k. 1860,	black	5		2
3 k. "	blue			3
6 k. "	orange	30		5
9 k. "	rose			5
6 k. 1862,	blue			5
9 k. "	brown			5



<i>New Used</i>				
1 k. 1864,	black	3	3	
3 k. 1862,	pink	5	1	
6 k. 1864,	blue	15	3	
9 k. "	brown	20	3	
18 k. 1862,	green	30	15	
30 k. "	orange	40	15	



1 k. 1868,	green	5	3	
3 k. "	rose	10	1	
7 k. "	blue		3	

UNPAID LETTER STAMPS.



1 k. 1862,	yellow	3		
3 k. "	"	5		
12 k. "	"	10		

ENVELOPE STAMPS.

3 k. 1858,	blue	20		
6 k. "	yellow	25		
9 k. "	rose	30		
12 k. "	brown			
18 k. "	red			
3 k. 1862,	rose	5	1	
6 k. "	blue	10	5	
9 k. "	brown	15	3	



New Used

BAHAMAS, W. I. I.

12 PENCE = 1 SHILLING.



Head Victoria.

1 p. 1859, carmine	5
4 p. 1861, (t 217) rose	3
6 p. " (t 218) purple	10
1 s. 1863, (t 219) green	15



BARBADOES, W. I. I.

12 PENCE = 1 SHILLING.

Britannia Seated.

(2 p.) 1852, blue paper	
green	50
(1 p.) " blue paper	
blue	50
(4 p.) " blue paper	
red	25
(2 p.) 1861, white	
paper, green	5
(1 p.) " white paper	
blue	2
(4 p.) " white paper	
red	3
6 p. 1864, vermilion	5
1 s. " black	5
3 p. 1873, claret	10
5 s. " (t 220) pink	
1/2 p. 1874, green	
1 p. " blue	2

BAVARIA, E.

60 KREUZERS = 1 GULDEN.



1 k. 1849, (t 221) black	75	25
1 k. 1850, rose	25	5
3 k. " blue	25	2
6 k. " brown	25	2
9 k. " green	25	2
12 k. 1858, red	40	10
18 k. 1854, orange	25	5
1 k. 1862, yellow	5	3
3 k. " rose	10	1
6 k. " blue	15	5
9 k. " stone	20	3
12 k. " green	25	5
18 k. " red	45	5

New Used



1 k. 1867, green	3	1
3 k. " rose	6	1
6 k. " blue	5	5
9 k. " brown	5	5
12 k. " lilac	10	10
18 k. " red	10	10
6 k. 1868, brown	2	2
7 k. " blue	2	2
10 k. 1873, orange	5	5
1 m. 1874, violet	25	25

UNPAID LETTER STAMPS.



3 k. 1871, black	10
1 k. 1873, "	5
3 k. " "	10

RETURN LETTER STAMPS.



Augsburg, 1865, black	10
Bamberg, " "	10
München, " "	
" variety, " "	
Nürnberg, " "	
Speyer, " "	
Würzburg, " "	10

ENVELOPE STAMPS.

3 k. 1869, (t 222) pink	8	5
1 k. 1874, green		5
8 k. " rose		8

NEWSPAPER WRAPPERS.

1 k. 1874, green	5
------------------	---

BELGIUM, E.

100 CENTIMES = 1 FRANC.



10 c. 1849, brown	15
20 c. " blue	5

New Used



1 c. 1861, green	5	10
10 c. 1850, brown	10	10
20 c. " blue	15	15
40 c. 1849, red	25	25
<i>Arms in Centre.</i>		
1 c. 1866, slate		
3 c. " blue	5	5
5 c. 1867, brown	5	5



10 c. 1865, slate	6	6
20 c. " blue	10	10
30 c. " brown	15	15
40 c. " rose	25	25
1 f. " violet	50	50



1 c. 1869, green	2	1
2 c. " blue	2	1
5 c. " amber	2	1
7 c. " violet	6	1



10 c. 1869, green	10	1
20 c. " (t 223) blue	15	1
30 c. " (t 224) amber	20	2
40 c. " (t 225) carmine	20	3
1 f. " (t 226) violet	50	5

RETURNED LETTER STAMPS.



10 c. 1870, green	10
20 c. " blue	

New Used
ENVELOPE STAMPS.

10 c. 1873, green 10
BERGENDORF, E.
16 SCHILLING = 1 MARK.



1/2 s. 1861, violet 3 00
3 s. " rose 3 00
1/2 s. " blue 10
1 s. " white 5
1 1/2 s. " yellow 5
3 s. " blue on rose 10
4 s. " brown 10



BERMUDA, W. I. I.

12 PENCE = 1 SHILLING.



1 p. 1865, red 6 5
2 p. " blue 12 10
6 p. " violet 35 15
1 s. " green 70 15
3 p. 1873, orange 20 10
3 p. 1874, green
1 p. 1875, "



BOLIVAR, S. A.

See United States of Colombia.



BOLIVIA, S. A.

100 CENTAVOS = 1 PESO.



5 c. 1867, green 50 40
5 c. " violet
10 c. " brown
50 c. " orange
50 c. " blue
100 c. " green
100 c. " blue

New Used



5 c. 1868 green 25 10
10 c. " red 10 10
50 c. " blue
100 c. " yellow
500 c. " black



5 c. 1871, green 15
10 c. " red 15
50 c. " blue
100 c. " yellow
500 c. " black



BRAZIL, S. A.

1000 REIS = 1 MILREIS.



30 r. 1843, Black
60 r. " "
90 r. " "



10 r. 1846, black 15
30 r. 1844, " 15
60 r. " " 15
90 r. " " 30
180 r. 1845, "
300 r. " "
600 r. " "

New Used



10 r. 1859 black 10
20 r. " " 15
30 r. " " 10 5
60 r. " " 10 5
90 r. " " 25 10
180 r. " " 20 15
300 r. " " 25 5
600 r. " " 75 10
10 r. 1854, blue 5 5
30 r. " " 20 10
280 r. 1861, red 20
120 r. " yellow 35



10 r. 1866, red 4 2
20 r. " (t 227) lilac 7 2
50 r. " blue 10 5
80 r. " violet 15 10
100 r. " green 10 2
200 r. " (t 227) black 10 2
500 r. " orange 75 10
300 r. 1871, (t 228)
green and violet

ENVELOPE STAMPS.



100 r. 1867, green
200 r. " black
300 r. " red

BREMEN, E.

72 GROTE = 1 RIX-DOLLAR.



Various Designs Similar to Cts:

3 r. 1855, blue 20
5 g. " rose 20
7 g. " yellow 20
10 r. 1861, white
5 s. g. 1855, green
2 g. 1863, orange 20

ENVELOPE STAMPS.

Small Oblong Oval.

1 g. 1861, blue pp.
black 10
1 g. " white pp. " 10

BRITISH COLUMBIA & VANCOUVER'S ISLAND, N. A.

100 CENTS = 1 DOLLAR.
Different Designs.

			New Used
2½ p. 1861,	(t 224) pink,	20	15
5 c. 1865,	rose	25	25
10 c. "	blue	50	25



3 c. 1865,	blue	30	15
2 c. 1868,	brown	8	8
5 c. 1869,	red		15
10 c. "	pink		
25 c. "	orange		25
50 c. "	violet		
1 d. "	green		



BRITISH GUIANA, S. A.

100 CENTS = 1 DOLLAR.



4 c. 1850,	yellow		
8 c. "	green		
12 c. "	blue		

Ship in Reel.

1 c. 1850,	carmine		
4 c. "	blue		
4 c. 1856,	blue		
4 c. "	carmine		

Ship, Date in Corners.

1 c. 1853	red	1 00	
4 c. "	blue	1 00	
1 c. 1860,	rose		75
2 c. "	orange		3
4 c. "	blue		5
8 c. "	rose		5
12 c. "	grey		5
24 c. "	green		20
1 c. 1862,	brown		50
1 c. 1863,	black		5



New Used

1 c. 1862,	red		
2 c. "	yellow		
4 c. "	blue		

NOTE.—There are three varieties of each.



6 c. 1863,	blue	25	10
24 c. "	green		5
48 c. "	red		15

BRITISH HONDURAS, S. A.

12 PENCE = 1 SHILLING.



1 p. 1865,	blue	6	5
6 p. "	rose		15
1 s. "	green		10
3 p. 1872,	brown		10

BRUNSWICK, E.

30 SILBER GROSCHEN = 1 THALER.



1 s. g. 1852,	rose		50
2 s. g. "	blue		35
3 s. g. "	vermillion		35
1 s. g. 1853,	orange		5
2 s. g. "	blue		5
3 s. g. "	pink		5
1 g. g. 1857,	(t 225) brown		5
¼ s. g. 1856,	brown		25
¼ s. g. "	white		5
¼ s. g. 1863,	green		5
3 s. g. 1862,	rose		5
1 s. g. 1865,	yellow		5



New Used

¼ g. 1865,	black	3	2
1 g. "	rose	3	2
2 g. "	blue	4	2
3 g. "	brown	4	3

ENVELOPE STAMPS.

Same as Last, Large.

1 s. g. 1855,	yellow	10	
2 s. g. "	blue	15	
3 s. g. "	rose	20	5

Same as Last Issue Adhesives.

1 s. g. 1865,	rose	8	
2 s. g. "	blue	12	
3 s. g. "	brown	15	

BUENOS AYRES, S. A.

8 REALS = 1 PESO.

2 p. 1858, (dos.),	blue		
3 p. "	(tree), green		
4 p. "	(cuatro), red		
5 p. "	(cinco), orange		
4 r. "	(cuatro), brown		
1 p. "	(in), brown		
1 p. 1859, (un),	blue		

Head, Liberty.

4 r. 1859,	green		50
1 p. "	blue		25
2 p. "	red		50
1 p. 1862,	rose		25
2 p. "	blue		25

CANADA, N. A.

12 PENCE = 1 SHILLING,

100 CENTS = 1 DOLLAR.

Various Designs.

½ p. 1857, (t 231)	pink	50	15
3 p. 1851, (t 232)	red		7
6 p. "	(t 233) purple		25
7½ p. 1857, (t 234)	green		
10 p. 1855, (t 235)	blue		
12 p. 1851,	black		

Same Designs, Value in Cents.

1 c. 1859, (t 231)	pink	3	1
2 c. 1864,	"		5
5 c. 1859, (t 232)	vermillion	12	1
10 c. "	(t 233) violet	15	3
12½ c. "	(t 234) green	20	5
17 c. "	(t 235) blue	35	10



New Used

1/2 c. 1868	black	2	1
1 c. "	red	5	3
2 c. "	green	5	1
3 c. "	red	8	1
6 c. "	brown	10	1
12 1/2 c. "	blue	25	5
15 c. "	violet	30	3
1 c. 1869,	yellow	5	3

Same Design Smaller.

1 c. 1870,	yellow	2	1
3 c. " (t 236)	red	5	1
2 c. 1871,	green	5	1
6 c. "	brown	8	1
10 c. 1874,	pink	12	3
30 c. 1875,	slate	50	10

ENVELOPE STAMPS.

5 c. 1860,	red	10	
10 c. "	brown	15	



CAPE OF GOOD HOPE, AF.

12 PENCE = 1 SHILLING.

Triangular.

1 p. 1853,	red	10	
4 p. "	blue	6	
6 p. 1858,	blue	15	
1 s. "	green	25	

Wood Block.

1 p. 1860,	blue		
4 p. "	red		
1 p. "	"	1 00	
4 p. "	blue	1 50	

Rectangular.

1 p. 1865,	red	3	
4 p. "	blue	2	
6 p. "	blue	10	
1 s. 1863,	green	3	
4 p. 1868,	blue	5	
5 s. 1871,	orange	25	
1 p. 1874,	blue	10	



CASHMERE, A.

16 ANNAS = 1 RUPEE.



New Used

1/2 a. 1866,	blue		
1 a. "	black		
4 a. "	dark slate		



3 p. 1866,	black	15	
6 p. "	blue	20	
1 a. "	orange	25	
2 a. "	yellow	50	
4 a. "	green	75	
8 a. "	red	1 50	



CEYLON, A.

12 PENCE = 1 SHILLING, AND
100 CENTS = 1 RUPEE.



Head of Victoria. Rectangular.

1/2 p. 1857,	lilac	5	
1 p. "	blue	5	
2 p. "	green	7	
4 p. "	(oct.) rose	10	
5 p. "	chocolate	25	
6 p. "	brown	5	
8 p. "	(oct.) brown	20	
9 p. "	" (") "	20	
10 p. "	red	7	
1 s. "	violet	5	
1 s. 9d. 1857, (oct.)	green		
2 s. 1857,	blue	8	
5 p. 1864,	green	15	
2 p. 1867,	yellow	5	
3 p. "	rose	10	
1 p. 1869, (t 237)	blue	8	5



New Used

Name, Various Frames.

2 c. 1872,	brown	6	5
4 c. "	pearl grey	10	3
8 c. "	(t 238) orange	25	5
16 c. "	mauve	50	10
24 c. "	green	75	8
36 c. "	(t 239) blue	1 00	10
48 c. "	rose	1 25	5
96 c. "	slate	2 00	5

ENVELOPE STAMPS.



Various Shapes.

1 p. 1861,	blue		
2 p. "	green		
4 p. "	rose		
5 p. "	brown		
6 p. "	(cir.) violet		
8 p. "	(oct.) chocolate		
9 p. "	(rect.) violet		
1 s. "	(cir.) yellow		
1 s. 9 p. 1861, (t 240)	(rect.) green		
2 s. 1861, (oct.)	blue		
10 p. 1869, (oval)	red		
4 c. 1871, (t 241)	blue		



CHILI, S. A.

100 CENTAVOS = 1 PESO.

Head Colon Above.

5 c. 1852, blue pp. red	75	15
10 c. " " blue		
1 c. 1855,	yellow	10 10
5 c. 1852,	red	25 6
10 c. "	blue	45 8
20 c. 1855,	green	75 18



1 c. 1868,	orange	7	
2 c. 1867,	black	10	
5 c. 1868,	red		5
10 c. "	blue		5
20 c. "	green		5



ENVELOPE STAMPS.

New Used

2 c.	1874, (t 242)	
	brown	
5 c.	" (t 243)	purple 25
10 c.	" (t 244)	blue 50
15 c.	" (t 245)	pink 75
20 c.	" (t 246)	green 1 00

CONFEDERATE STATES, N. A.

100 CENTS = 1 DOLLAR.

These stamps were issued in 1861 by the postmasters of the different cities, and are now very scarce.

PROVISIONAL STAMPS.

Issued 1861.

Athens, Ga.

5 c.	(t 247)	purple	10 00
------	---------	--------	-------

Baton Rouge, La.

5 c.	(t 248)	red	
------	---------	-----	--

Charleston, S. C.

5 c.	(t 249)	blue	10 00
5 c.	env. (t 250)	blue	

Columbia.

5 c.	env. (t 251)	blue	5 00
------	--------------	------	------

Fredericksburg, Va.

5 c.	(t 252)	blue	
10 c.		red	

Goliad, Tex.

5 c.	(t 253)	black	
10 c.		"	

Greenville, Ala.

5 c.	(t 254)	red, blue	
------	---------	-----------	--

Knoxville, Tenn.

5 c.	(t 255)	black	
5 c.	(t 256)	red	1 00 1 00
10 c.	(t 256)	blue	
5 c.	env. (t 255)	green	

Livingston, Ala.

5 c.	(t 257)	blue	
------	---------	------	--

Lynchburg, Va.

5 c.	(t 258)	blue	10 00
------	---------	------	-------

Macon, Ga.

5 c.	(t 259)	blue	
5 c.		green	

Madison, Fla.

3 c.	(t 260)	gold	
------	---------	------	--

Marion, Va.

2 c.	(t 261)	black	
3 c.	"	"	
5 c.	"	"	
10 c.	"	"	
15 c.	"	"	
20 c.	"	"	

Memphis, Tenn.

2 c.	(t 262)	blue	1 00
5 c.	(t 263)	red	1 00
5 c.	env. (t 263)	red	

Mobile, Ala.

New Used

2 c.	(t 264)	black	
5 c.	(t 265)	blue	4 00

Nashville, Tenn.

3 c.	(t 266)	red	1 00
5 c.		crimson	10 00
10 c.		red	

New Orleans, La.

2 c.	(t 267)	blue	
2 c.		red	
5 c.	(t 268)	brown	10 50
5 c.		red	
5 c.		brown on blue	50

Petersburg, Va.

5 c.	(t 269)	red	5 00
------	---------	-----	------

Pleasant Shade.

5 c.	(t 270)	blue	
------	---------	------	--

Rheatown, Tenn.

5 c.	(t 271)	red	
------	---------	-----	--

Statesville, N. C.

5 c.	env. (t 272)	black	1 00
------	--------------	-------	------

Salem, N. C.

5 c.	env. (t 273)	black	
------	--------------	-------	--

GENERAL ISSUE.

Different Heads. Large Rect.

5 c.	1861, (t 274)	green	50 15
10 c.	" (t 275)	blue	1 00 50
2 c.	1862, (t 276)	green	1 00 1 00
5 c.	" (t 274)	blue	30 15
10 c.	" (t 275)	rose	1 00 1 00

Different Heads. Small Rect.

1 c.	1861, (t 277)		
		orange	10
2 c.	" (t 278)	rose	5
5 c.	" (t 277)	blue	5 2
10 c.	" (t 279)	"	3 2
10 c.	" (t 280)	"	1 00
20 c.	"	green	3
10 c.	"	var. blue	25



CORRIENTES, S. A.

See Argentine Republic.



COSTA RICA, S. A.

8 REALES = 1 PESO.

Name, Mountains and Ship.

1/2 r.	1863,	blue	15 10
2 r.	"	red	40 7
4 r.	1864,	green	90 20
1 p.	"	orange	1 75 40

CURDINAMARCA, S. A.

See United States of Colombia.

DANISH WEST INDIES.

100 CENTS = 1 DOLLAR.



3 c.	1855,	red	15 10
3 c.	1867,	rose	10 5
4 c.	1873,	ultramarine	20

New Used



1 c.	1873,	green and violet	5
3 c.	"	blue and carmine	10 5
4 c.	"	brown and blue	10 5
7 c.	1874,	lilac and orange	15
14 c.	1873,	lilac and green	25



DANUBIAN PRINCIPALITIES, E.

See Roumania.



DECCAN, A.

16 ANNAS = 1 RUPEE.



1 a.	1868,	green	50
------	-------	-------	----



1/2 a.	1870,	brown	
2 a.	"	green	50



New Used

1/2 a.	1871,	red	10	
1 a.	"	violet black		
2 a.	"	green		
3 a.	"	brown		
4 a.	"	slate		
1 1/2 a.	"	dark brown		
2 1/2 a.	"	pale blue		

DENMARK, E.

100 SKILLINGS OR ORE = 1 JUK DOLLAR.

2 r. s.	1851, (t 281)	blue	30	
---------	---------------	------	----	--



4 r. s.	1851,	brown		
2 s.	1853,	blue	8	
4 s.	"	brown		
8 s.	"	green		
1 s.	1857,	brown	15	
8 s.	"	green		
16 s.	"	lilac		



2 s.	1865,	blue	5	3
3 s.	"	violet		3
4 s.	1864,	red		3
8 s.	1863,	brown		5
16 s.	1864,	slate		5



2 s.	1871,	blue & slate	5	3
3 s.	"	purple "	10	3
4 s.	"	carmine "	10	2
8 s.	"	brown "	20	5
16 s.	"	green "	30	5
48 s.	"	violet & brown	75	15
3 a.	1871,	grey & blue,		
1 a.	"	blue & slate		
8 a.	"	red "		
12 a.	"	purple "		
16 a.	"	brown "		
25 a.	"	green "		
30 a.	"	violet & brown		

OFFICIAL STAMPS.



New Used

2 s.	1871,	blue	5	
4 s.	"	carmine	10	5
16 s.	"	green	20	10
3 a.	1874,	grey		
4 a.	"	blue		
8 a.	"	red		
32 a.	"	green		

ENVELOPE STAMPS.



2 s.	1865,	blue	10	
4 s.	"	red	10	
4 s.	"	(no S) "	10	
2 s.	1869,	" blue	10	
4 a.	1874,	"	10	
8 a.	"	red		

NEWSPAPER BANDS.

Same as Adhesive.

2 s.		blue	5	
4 s.		carmine		
4 a.	1874,	blue		



DOMINICA, W. I. I.

12 PENCE = 1 SHILLING.
Head. Queen in Centre.

1 p.	1874,	lilac		
6 p.	"	green		
1 s.	"	saffron		



DUTCH EAST INDIES, O.

100 CENTS = 1 FLORIN.

10 c.	1864, (t 282)	carmine	25	15
-------	---------------	---------	----	----



5 c.	1870,	green	10	
10 c.	"	bistre	15	10
20 c.	"	ultramarine	20	10
50 c.	"	carmine	40	5
1 c.	1874,	olive	5	4
15 c.	"	bistre	15	
25 c.	"	violet	25	
2 g.	50 c. 1874,	green and violet	2	00

UNPAID LETTER STAMPS.



New Used

5 c.	1874,	yellow	10	
10 c.	"	green	15	
20 c.	"	blue	25	



DUTCH WEST INDIES, W. I. I. Suriname.



2 1/2 c.	1873,	carmine	10	
3 c.	"	green	15	
5 c.	"	violet		
10 c.	"	bistre		
25 c.	"	blue		
50 c.	"	red brown		



Curaco.

2 1/2 c.	1873,	green	10	
3 c.	"	grey	15	
5 c.	"	carmine		
10 c.	"	blue		
25 c.	"	orange		
50 c.	"	violet		



ECUADOR, S. A.

8 REALER = 1 PESO.



1/2 r.	1865,	blue	15	15
1 r.	"	buff	20	10
1 r.	"	green		30
4 r.	1866,	red		50
1 r.	1873,	buff on blue		50



			New	Used
1/2 r.	1873,	blue	25	15
1 r.	" (t283)	orange	25	5
1 p.	"	pink		40

EGYPT, AF.
40 PARAS = 1 PIASTRE.



5 pa.	1865,	sea green		
10 pa.	"	brown	10	
20 pa.	"	blue	20	
1 pi.	"	lilac	30	15
2 pi.	"	yellow	40	
5 pi.	"	rose	75	
10 pi.	"	dark slate	100	



5 pa.	1867,	yellow	5	5
10 pa.	"	lilac	10	10
20 pa.	"	blue	12	12
1 pi.	"	red	20	5
2 pi.	"	blue	40	10
5 pi.	"	brown	75	



5 pa.	1872,	brown	3	3
10 pa.	"	mauve	8	5
20 pa.	"	blue	12	6
1 pi.	"	red	20	5
2 pi.	"	yellow	40	10
2 1/2 pi.	"	purple	60	
5 pi.	"	green	70	25

OFFICIAL STAMPS.

Egyptian Characters in Circle.

NOTE.—There are about 40 varieties of these stamps, at 10 cents each.



New Used
FERNANDO PO, AF.
100 CENTIMOS = 1 ESCUDO.



20 c. de c. 1871, brown

FIJI ISLANDS, O

12 PENCE = 1 SHILLING,
AND 100 CENTS = 1 DOLLAR.



1 p.	1871,	black		
		on pink		
3 p.	"	"	"	
6 p.	"	"	"	
9 p.	"	"	"	
1 s.	"	"	"	



1 p.	1872,	blue	25
3 p.	"	green	50
6 p.	"	rose	

New Value Surcharged Across.

2 c.	1872,	blue	
6 c.	"	green	
12 c.	"	rose	

Surcharged V. R.

2 c.	1875,	blue	
6 c.	"	green	
12 c.	"	rose	



FINLAND, E.

100 KOPECKS = 1 RUBLE
AND 100 PENNIA = 1 MARK.

Arms in Oblong Oval.

5 k.	1856,	rose	10
10 k.	"	blue	
20 k.	"	black	



			New	Used
5 k.	1860,	blue		10
10 k.	"	rose		10
5 p.	1866,	violet	8	5
8 p.	1867,	green	10	5
10 p.	1868,	buff	15	5
20 p.	"	blue	20	5
40 p.	"	rose	40	5
1 m.	1867,	buff	75	25

ENVELOPE STAMPS.

10 k.	1845,	oval rose	1
20 k.	"	blue	

Same as Same Date Adhesives.

5 k.	1856,	blue	50
10 k.	"	rose	10
20 k.	"	black	
5 k.	1860,	blue	20
10 k.	"	rose	
20 p.	1871,	blue	15
40 p.	"	rose	25

LOCAL STAMPS

Helsingfors.

10 p.	1864, (t285)	red and green	
10 p.	1866,	red & green	15
10 p.	1868, (t286)	blue and brown	15
10 p.	1871,	red & green	12

Tammersfors.

10 p.	1866,	blue and green	15
-------	-------	----------------	----



FRANCE, E.

100 CENTIMES = 1 FRANC.



	New	Used
10 c. 1850, buff	75	10
15 c. " green	1 00	6
20 c. 1848, black	75	6
25 c. " blue	75	6
40 c. 1849, vermilion	1 25	2
1 f. " crimson	2 00	6
1 f. " vermilion		



10 c. 1852, buff	1 50	10
25 c. " blue	1 50	5



10 c. 1853, yellow		2
25 c. " blue		15
40 c. " orange		5
80 c. " lake		5
1 f. " "		15

Perforated.

1 c. 1860, olive green	2	1
5 c. 1856, green	4	2
10 c. 1862, buff	6	1
20 c. 1856, blue	10	1
40 c. 1853, orange		1
80 c. 1856, pink		1



1 c. 1870, olive green	2	1
2 c. 1863, brown	1	1
4 c. " lavender	3	2



10 c. 1867, buff	6	1
20 c. " blue	15	1
30 c. " brown	25	1
40 c. 1868, orange	20	2
80 c. 1867, rose	30	1
5 f. 1869, (t 287) violet	15	15



Lithographed and Unperforated.

	New	Used
1 c. 1871, olive green	3	5
2 c. " brown	3	5
4 c. " lavender	5	5
5 c. " green	5	5
10 c. " buff	10	5
20 c. " blue	15	5
30 c. " brown	20	5
40 c. " orange	25	5
80 c. " carmine	60	10

Engraved and Perforated.

1 c. 1872, olive green	2	1
2 c. " brown	2	1
4 c. " lavender	3	1
5 c. " green	3	1
10 c. " buff	10	5
15 c. " "	10	2
20 c. " blue	12	5
25 c. " "	15	1
40 c. " orange	20	1
10 c. 1873, brown on pink	10	5

Larger Figures of Value.

30 c. 1872, brown	20	2
80 c. " pink	30	3
15 c. 1874, buff	10	1
10 c. 1875, brown on pink	10	2
25 c. " blue		
40 c. " orange		

UNPAID LETTER STAMPS.



10 c. 1859, (lith.) black		
10 c. " "	10	10
15 c. " "	10	10
25 c. 1871, "		10
40 c. " blue		
60 c. " yellow		



FRENCH COLONIES, W. I. I.

100 CENTIMES = 1 FRANC.



1 c. 1862, olive green	15	
5 c. " green	10	
10 c. 1860, buff	10	
20 c. 1866, blue	10	
40 c. 1860, orange	10	
80 c. 1866, rose	15	

CAMBIA, AF.

12 PENCE = 1 SHILLING.



	New	Used
4 p. 1869, brown		
6 p. " blue		50



GERMANY, E.

30 SILBER GROSCHEN = 1 THALER,
60 KREUZERS = 1 GUILDER,
100 PFENNIGE = 1 MARK.

Thurn und Taxis.



Colored Paper.

1/4 s. g. 1852, brown	25
1/3 s. g. 1858, flesh	10
1/2 s. g. 1852, green	10
1 s. g. " blue	5
2 s. g. " rose	5
3 s. g. " yellow	5

White Paper.

1/4 s. g. 1859, red	5
1/2 s. g. " green	10
1 s. g. " blue	5
2 s. g. " rose	3
3 s. g. " red brown	3
5 s. g. " violet	10
10 s. g. " orange	
1/4 s. g. 1864, black	5
1/3 s. g. 1862, green	3
1/2 s. g. " orange	5
1 s. g. " rose	2
2 s. g. " blue	2
3 s. g. " light brown	2

ENVELOPE STAMPS.

Figure in Oval.

1/2 s. g. 1861, orange	5
1 s. g. " rose	5
2 s. g. " blue	5
3 s. g. " brown	5
1/4 s. g. 1866, black	5



Colored Paper.

1 k. 1852, green	5
3 k. " blue	7
6 k. " rose	3
9 k. " yellow	3

White Paper.

		New Used
1 k. 1859,	green	3
3 k. "	blue	5
6 k. "	rose	5
9 k. "	yellow	3
15 k. "	violet	5
30 k. "	orange	10
3 k. 1862,	rose	3
6 k. "	blue	3
9 k. "	brown	2

ENVELOPE STAMPS.

Figure in Octagon.

2 k. 1862,	yellow	5
3 k. "	rose	5
6 k. "	blue	5
9 k. "	brown	3
1 k. 1866,	green	5

North German Postal District.



4 g. 1868,	mauve	5
3 g. "	green	5
2 g. "	orange	5
1 g. "	rose	1
2 g. "	blue	1
5 g. "	(t 288) bistre	2
10 g. 1869, (t 289)	slate	5
30 g. "	blue	5

Figure of Value, in Oval.

1 k. 1868,	green	3
2 k. "	orange	5
3 k. "	rose	3
7 k. "	blue	2
13 k. "	bistre	5

OFFICIAL STAMPS.



1/4 g. 1870,	flesh	5
3/4 g. "	"	5
1/2 g. "	"	5
1 g. "	"	5
2 g. "	"	5
1 k. "	grey	5
2 k. "	"	5
3 k. "	"	5
7 k. "	"	5

ENVELOPE STAMPS.

Same as Adhesive.

1 g.	pink	5
3 k.	"	10

Adhesive Stamps pasted over envelopes of Prussia, Saxony, Brunswick, Oldenburg, and Mecklenburg Strélitz, and printed over with a pale drab design, composed of "Norddeutscher Post Bezirk," many times repeated.

1 g. 1868	rose
2 g. "	blue
3 k. "	rose

NEWSPAPER BANDS.

		New Used
1/2 g. 1868	green	3
1 k. "	"	5

EMPIRE.



4 g. 1871,	mauve	5
1/3 g. "	green	5
1/2 g. "	orange	1
1 g. "	rose	1
2 g. "	blue	2
5 g. "	stone	2
1 k. "	green	2
2 k. "	orange	1
3 k. "	rose	1
7 k. "	blue	1
18 k. "	stone	1

Like Types 288-9, Inscribed "Deutsche Reichs-post."

10 g. 1871,	slate	5
30 g. "	blue	5



1/4 g. 1872,	mauve	2
3/4 g. "	green	2
1/2 g. "	orange	2
1 g. "	rose	1
2 g. "	blue	1
2 1/2 g. "	brown	2
5 g. "	stone	2
2 1/2 g. 1873,	brown	2
1 k. "	green	3
2 k. "	orange	10
3 k. "	rose	1
7 k. "	blue	1
9 k. "	brown	2
18 k. "	stone	10
9 k. 1874,	brown	10



3 p. 1875,	green	3
1 p. "	violet	3



New Used

10 p. 1875,	rose	2
20 p. "	blue	2
25 p. "	brown	2
50 p. "	grey lilac	3
2 m. "	obl. violet	5

ENVELOPE STAMPS.

Same as Adhesive.

1 g. 1871,	rose	2
3 k. "	"	2
1/4 g. 1873,	mauve	2
1/3 g. "	green	2
1/2 g. "	orange	2
1 g. 1872,	rose	2
2 g. 1873,	blue	2
2 1/2 g. "	brown	2
5 g. "	stone	2
1 k. "	green	2
2 k. "	orange	2
3 k. 1872,	rose	2
7 k. 1873,	blue	2
9 k. "	brown	2
18 k. "	stone	2
10 p. 1875,	rose	2

NEWSPAPER BANDS.

1/3 g. 1871,	green	3
1 k. "	"	3
1 k. 1872,	"	3
1/3 g. "	"	3
3 p. 1875,	"	3

Alsace and Lorraine.

100 CENTIMES = 1 FRANC.



Found also with Inverted Back ground.

1 c. 1870,	green	3
2 c. "	brown	5
4 c. "	grey	10
5 c. 1871,	green	10
10 c. 1870,	bistre	15
20 c. "	blue	20
25 c. 1871,	brown	25



GREAT BRITAIN, E.
12 PENCE = 1 SHILLING.



1 p. 1840,	black	60	5
2 p. "	blue	75	10
1 p. 1841,	red	10	2
<i>White Lines Above and Below.</i>			
2 p. 1841,	blue	15	3



Embossed Head to Left in Octagon.

6 p. 1847,	violet	1 50	8
10 p. 1848, (t 290)	brown	1 50	20
1 s. 1854,	green	2 00	3



Plain Corners.

4 p. 1855,	vermillion	30	3
6 p. 1856,	lilac	35	2
1 s. "	green	60	2



Letters in all Corners.

1/2 p. 1870, (t 291)	red	2	1
1 p. 1864,	"	4	1
1 1/2 p. 1870, (t 292)	"	5	2
2 p. 1858,	blue	10	1
3 p. 1862,	rose	15	5
4 p. "	vermillion	20	3
5 p. "	lilac	30	2
9 p. "	bistre	50	10
1 s. "	green	50	2



Large Letters in Corners.

3 p. 1865,	rose	15	1
4 p. "	vermillion	20	2
6 p. "	lilac	25	1
9 p. "	bistre	40	3
10 p. 1867,	brown	50	3
1 s. 1865,	green	50	1
2 s. 1867,	blue	75	2
5 s. "	(t 293) rose	1 50	5
6 p. 1872,	brown	25	2
6 p. 1873,	slate	25	2

Colored Letters in Corners.

3 p. 1873,	rose	15	1
4 p. "	"	"	"
6 p. 1874,	slate	25	1
9 p. "	"	"	"
10 p. "	"	"	"
1 s. 1873,	green	50	1
2 s. "	"	"	"
5 s. "	"	"	"

ENVELOPE STAMPS.



1 p. 1841,	pink	5
2 p. "	blue	"
1 p. 1840, (t 294)	bl'k	"
2 p. "	blue	"
<i>With Date.</i>		
1 p. 1841	pink	4 2
2 p. "	blue	12 5
3 p. 1862, (t 295)	rose	20
4 p. 1855, (t 296)	vermillion	25
6 p. "	(t 297) lilac	25
1 s. "	(t 298) green	70
1 1/2 p. 1872, (t 299)	pink	10
1 1/2 p. 1875, "	brown	10

COMPOUND ENVELOPES.

5 p.	red & pink
7 p.	" " rose
8 p.	" " red
9 p.	violet & rose
10 p.	" " red
1 s. 1 p.	green & pink
1 s. 2 p.	" " blue
1 s. 3 p.	" " rose
1 s. 4 p.	" " red
1 s. 6 p.	" & violet
2 s.	" " green

NEWSPAPER WRAPPERS.

1/2 p. 1871, (t 300)	green	5
1/2 p. "	"	2 2

GREECE, E.

100 LEPTA = 1 DRACHM



11. 1861,	brown	25
21. "	cinnamon	"
51. "	green	"

20 l. 1861,	blue	25
40 l. "	violet	"
80 l. "	rose	"
11. 1863,	brown	2 2
21. "	cinnamon	4 4

Large Figure on Back.

10 l. 1861,	orange	5
<i>Figure on Back.</i>		
5 l. 1863	green	10 5
10 l. "	orange	3 3
20 l. "	blue	2 2
40 l. "	violet	5 5
80 l. "	rose	5 5



GRENADA, W. I. I.

12 PENCE = 1 SHILLING.

1 p. 1860,	green	10
6 p. "	red	10



GUATEMALA, S. A.

100 CENTAVOS = 8 REALES
" " = 1 PESO.



1 c. 1871,	bistre	10
5 c. "	brown	10
10 c. "	blue	10
20 c. "	rose	15
4 r. 1872, (t 301)	violet	25
1 p. "	yellow	"

Profile of President Don J. Rufino Barrios.

1/4 r. 1875,	green
1/2 r. "	brown
1 r. "	blue
2 r. "	red

ENVELOPE STAMPS.



1/4 r. 1875,	black
1/2 r. "	green
1 r. "	blue
2 r. "	red

HAMBURG, E.

16 SCHILLINGS = 1 MARK.



		New	Used
1/2 s. 1859	black	3	3
1 s. "	brown	5	3
2 s. "	red	7	3
3 s. "	blue	10	10
4 s. "	green	10	3
7 s. "	orange		10
9 s. "	yellow	25	5
1 1/4 s. 1864,	violet	6	4
2 1/2 s. "	green	10	5
7 s. 1865,	violet	10	3
1 1/4 s. 1866, (t 302)			
	purple		15
1 1/2 s. "	rose	6	4
2 1/2 s. 1867,	green	10	3
	brown	5	3

ENVELOPE STAMPS.*Similar to Adhesives.*

1/2 s. 1866,	black	5
1 1/4 s. "	violet	20
1 1/2 s. "	rose	6
2 s. "	orange	8
3 s. "	blue	12
4 s. "	green	15
7 s. "	violet	20

LOCAL STAMPS.

116 varieties, the set 50

HANOVER, E.

10 PFENNIGE = 1 GROSCHEN,
30 SILBER GROSCHEN = 24 GUTE
GROSCHEN = 1 THALER.



1 g.g. 1850-3, (t 303)			
	blue	15	
3 p. " (t 304)	red	5	
1 g.g. " (t 303)			
	green	5	
1-30 t. "	red	10	
1-15 t. "	blue	10	
1-10 t. "	yellow	10	

Same, on Ground of Small Network.

3 p. 1859,	red		
1-10 t. "	yellow	35	25

Same, Network Larger

3 p. 1859,	red	15	
1 g.g. "	green	5	
1-30 t. "	red	6	
1-15 t. "	blue	10	
1-10 t. "	yellow	10	

Head, George V.

1 g. 1859,	red	10	2
2 g. "	blue		5
3 g. "	yellow		7
10 g. "	green		15
3 g. 1861,	brown		3
1/2 g. 1860, (t 305)	blk	10	5
3 p. 1864,	green	10	5

ENVELOPE STAMPS.*Head, George V.*

New Used

3 p. 1857,	white		
1 g.g. "	green	15	
1 g.g. "	rose	10	
2 s.g. "	blue	15	
3 s.g. "	orange	20	
1 g. 1858	rose	15	5
12 s. "	blue	20	
3 g.g. "	brown	25	5
3 g.g. "	yellow	75	
Prefoil, 1858, (t 306)			
	green	10	
Horse, 1861, (t 307) "		10	

**HELIGOLAND, E.**

16 SCHILLINGS = 1 MARK.
100 PFENNIGE = 1 MARK



1/2 s. 1867, green		5
	& rose	
1 s. " " " "		10
2 s. " " " "		15
6 s. " " " "		25
1/4 s. 1873,		10
3/4 s. " " " "		10
1 1/2 s. " " " "		10
1/4 s. " " " "		10



1 p. 1875, green & rose	3
2 p. " " " "	5
5 p. " " " "	5
10 p. " " " "	10
25 p. " " " "	20
50 p. " " " "	35

**HOLSTEIN, E.**

See Schleswig Holstein.

**HOLLAND, E,**

100 CENTS = 1 FLORIN.

Head, William III.

New Used

5 c. 1862,	blue	3
10 c. " "	red	4
15 c. " "	orange	8
<i>Post Zegel at Bottom.</i>		
5 c. 1865,	blue	
10 c. " "	red	
15 c. " "	orange	



5 c. 1867,	blue	
10 c. " "	red	
15 c. " "	brown	
20 c. " "	green	
25 c. " "	violet	
50 c. " "	gold	



1 c. 1869,	black	
1 1/2 c. " "	pink	
2 c. " "	yellow	
1 c. " "	green	
1/2 c. 1871	brown	
2 1/2 c. " "	violet	



5 c. 1872,	blue	
10 c. " "	carmine	
15 c. " "	brown	
20 c. " "	green	
25 c. " "	violet	
50 c. " "	buff	
2 g. 50 c. 1872, (t 308)	blue and pink	

UNPAID LETTER STAMPS.



New Used

5 c. 1870,	brown	10	10
10 c. "	carmine		
	on blue		



HONDURAS, S. A.

8 REALES = 1 PESO.



2 r. 1865,	green	25	15
2 r. "	pink	50	25



HONG KONG, A.

100 CENTS = 1 DOLLAR.



2 c. 1862,	brown	5	2
4 c. 1863,	slate	10	2
6 c. "	lilac	2	2
8 c. 1862,	yellow	15	2
12 c. "	blue		5
18 c. "	violot		15
24 c. "	green		3
30 c. 1863,	vermillion		
48 c. 1862,	rose		5
96 c. "	slate		5
96 c. 1865,	yellow		
30 c. 1871,	violot		3



HUNGARY, E.

100 KREUZERS = 1 FLORIN.



New Used

2 k. 1871,	orange	10	5
3 k. "	green	13	5
5 k. "	rose	15	2
10 k. "	blue		3
15 k. "	brown		10
25 k. "	violet		10

Lithographed.

2 k. 1871,	orange	15	
3 k. "	green	25	
5 k. "	rose	10	
10 k. "	blue	15	
15 k. "	brown	15	
25 k. "	violet	10	



2 k. 1874,	violet	5	5
3 k. "	green	8	5
5 k. "	red	10	2
10 k. "	blue	15	5

NEWSPAPER STAMPS.

Various Designs.

1 k. 1869, (t309)	blue	5	
2 k. "	(t310) brown	10	
1 k. 1873, (t311)	red		5
2 k. 1872, (t312)	"		2
1 k. 1874,	"		3
1 k. "	blue		
1 k. "	"		

ENVELOPE STAMPS.

Same as Adhesive.

3 k. 1871,	green		
5 k. "	red		5
10 k. "	blue		
15 k. "	brown		
3 k. 1874,	green		
5 k. "	carmine		
10 k. "	blue		

NEWSPAPER BANDS.

2 k. 1871,	orange		
2 k. 1874,	lilac		



ICELAND, E.

100 SKILLINGS = 1 RIX DALEK.



New Used

2 s. 1873,	blue	5	
3 s. "	grey	10	
4 s. "	rose	10	
8 s. "	brown	20	
16 s. "	yellow	35	

OFFICIAL STAMPS.

4 s. 1873,	green	10	
8 s. "	mauve	25	

INDIA, A.

16 ANNAS = 1 RUPEE.



1/2 a. 1854, rect.	blue	25	
1 a. "	red	10	
2 a. "	(t313) green		15
4 a. "	(t314) red and blue		10



Blue Paper.

1 a. 1858,	brown		
4 a. "	black		6
8 a. "	rose		5

White Paper

8 p. 1860,	lilac		2
1/2 a. "	blue		3
1 a. "	brown		2
2 a. "	pink		3
4 a. "	black		3
8 a. "	rose		2
2 a. 1865,	yellow		2
4 a. "	green		8
4 a. 1866, (t315)			3
6 a. 8 p. 1867, (t316)	slate		7

Adapted from Revenue Stamps.

2 a. 1866,	violet		
4 a. 1867, (t317)	"		
6 a. "	va.		25
8 a. "	(t318)		25

ENVELOPE STAMPS.

Head in Circle.

1/2 a. 1857,	blue	15	10
1 a. "	brown	20	10

IONIAN ISLES, E.

100 OBOLI = 1 DOLLAR.



New Used

- 1 c. 1859, yellow
- 2 c. " blue
- 4 c. " red

ITALY, E.

100 CENTESIMI = 1 LIRA.



- 5 c. 1851, black 1 25
- 20 c. " blue 15
- 40 c. " red 1 50

Colored Paper.

- 5 c. 1853, green 1 00
- 20 c. " blue 15
- 40 c. " red 1 00

White Head.

- 5 c. 1855, green 1 00
- 20 c. " blue 20
- 40 c. " red 1 50

White Letters.

- 5 c. 1858, green 6 4
- 10 c. " buff 6 3
- 15 c. 1863, blue 10 4
- 20 c. 1858, " 5 3
- 40 c. " red 5 5
- 80 c. " orange 10 5
- 31. 1860, bronze 20 20



- 15 c. 1863, (t 319) blue 5 2
- 5 c. 1864, slate 5 1
- 10 c. " buff 10 1
- 15 c. 1865, blue 15 2
- 20 c. 1864, " 20 1
- 30 c. " brown 20 2
- 40 c. " rose 25 2
- 60 c. " lilac 30 2
- 21. 1867, red 3 3
- 20 c. " (t 325) blue 15 1

UNPAID LETTER STAMPS.

Figure in Centre.

New Used

- 10 c. yellow 10
- 10 c. (t 321) buff 10



- 1 c. 1870 orange 3
- 2 c. " " 5 3
- 5 c. " " 10 5
- 10 c. " " 20 10
- 30 c. " " 20 10
- 40 c. " " 20 10
- 50 c. " " 25 10
- 60 c. " " 30 10
- 11. " blue 40 15
- 21. " " 80 25
- 51. 1874, " "
- 101. " "

NEWSPAPER STAMPS.

Figure in Centre.

- 1 c. 1857, black 3 3
- 2 c. " buff 5 5
- 2 c. " black 5 5
- 1 c. 1863, (t 322) green 3 2
- 2 c. " brown 5 2

OFFICIAL STAMPS.



- 2 c. 1874, lake 5 5
- 5 c. " " 5 5
- 20 c. " " 5 5
- 30 c. " " 5 5
- 11. " " 10 10
- 21. " " 10 10
- 51. " " 25 25
- 101. " " 50 50
- 501. " " 50 50
- 1001. " " 50 50

FOR FOREIGN OFFICES.

Altered from Regular Issue, and Surcharged "Estero."

- 1 c. 1874, green 2 2
- 2 c. " brown 2 2
- 5 c. " green 2 2
- 10 c. " buff 2 2
- 20 c. " blue 2 2
- 30 c. " brown 2 2
- 40 c. " rose 2 2
- 60 c. " violet 2 2
- 21. " red 2 2



JAMAICA, W. I. I.

12 PENCE = 1 SHILLING.

Head Victoria.

New Used

- 1/2 p. 1872, (t 321) claret 5 5
- 1 p. 1860, blue 6 6
- 2 p. " rose 12 12
- 3 p. 1863, green 18 18
- 4 p. 1860, vermilion 25 25
- 6 p. " lilac 35 35
- 1 s. " brown 70 70

JAPAN, A.

100 TENPOES OR SENS = 1 DOLLAR.



- 1/2 t. 1871, brown
- 1 t. " (t 324) blue
- 2 t. " (t 325) vermilion
- 3 t. " (t 326) green



- 1/2 t. 1872, brown 10
- 1 t. " blue
- 2 t. " vermilion
- 3 t. " green



Similar to Cut.

- 1/2 s. 1873, brown 10
- 1 s. " blue 10 10
- 2 s. " vermilion 15 10
- 4 s. " yellow 10 10
- 6 s. " rose 15 10
- 6 s. 1874, brown 25 10
- 10 s. 1873, green 30 15
- 20 s. " mauve 50 25
- 30 s. " slate 75 25



Similar to Cut.

- 12 s. 1875, rose 30 20
- 15 s. " blue 40 10
- 45 s. " carmine 1 00 30

LACOS, AF.

12 PENCE = 1 SHILLING.



New Used

1 p. 1874,	lilac	
2 p. "	blue	
3 p. "	brown	
4 p. "	rose	
6 p. "	green	
1 s. "	orange	

LIBERIA, AF.

100 CENTS = 1 DOLLAR.



6 c. 1860,	red	25
12 c. "	blue	25
24 c. "	green	50

Same, with Outer Line.

6 c. 1866,	red	
12 c. "	blue	
24 c. "	green	

LUBECK, E.

16 SCHILLINGS = 1 MARK.



1/2 s. 1859,	lilac	5
1 s. "	orange	6
2 s. "	brown	7
2 1/2 s. "	pink	8
4 s. "	green	10



1/2 s. 1863,	green	5
1 s. "	orange	5
2 s. "	crimson	6
2 1/2 s. "	blue	8
4 s. "	brown	10
1 1/4 s. 1864, (t. 327)	brown	5
1 1/2 s. 1866, (t. 328)	lilac	8

ENVELOPE STAMPS.

Same as Adhesive.

New Used

1/2 s. 1863,	green	
1 s. "	orange	
1 1/2 s. "	lilac	
2 s. "	crimson	
2 1/2 s. "	blue	
4 s. "	brown	



LUXEMBURG, E.

100 CENTIMES = 1 FRANC.

Head, William III.

10 c. 1852,	black	10
1 s. g. "	red	5
<i>Arms in Circle.</i>		
1 c. 1863,	buff	3
2 c. "	black	5
4 c. "	yellow	5
4 c. 1871	green	5
<i>Arms in Oval.</i>		
10 c. 1859,	blue	5
12 1/2 c. "	rose	12
25 c. "	brown	5
30 c. "	lilac	10
37 1/2 c. "	green	10
40 c. "	orange	8
10 c. 1865,	lilac	5
20 c. 1867,	brown	10
25 c. 1865,	blue	5
37 1/2 c. "	brown	15
1 f. 1873,	"	



LUZON, O.

See Philippine Islands.



MADEIRA, AF.

1000 REIS = 1 MILREIS.



5 r. 1868,	black	5
10 r. "	yellow	8
20 r. "	straw	12
25 r. "	rose	18
50 r. "	green	25
80 r. "	orange	35
100 r. "	lilac	40
120 r. "	blue	50
240 r. "	violet	1 00



New Used

5 r. 1871,	black	5
10 r. "	yellow	8
20 r. "	straw	12
25 r. "	rose	18
50 r. "	green	10
80 r. "	orange	10
100 r. "	lilac	
120 r. "	blue	10
240 r. "	violet	



MALTA, E.

12 PENCE = 1 SHILLING.



1/2 p. 1860,	buff	5
--------------	------	---

MAURITIUS, AF.

12 PENCE = 1 SHILLING.

Head, Victoria.

1 p. 1850,	red	1 00
1 p. "	va. "	
1 p. "	" "	
2 p. "	blue	1 00
2 p. "	va. "	1 00
2 p. "	" "	



1 p. 1856,	red	
1 p. "	va. "	
2 p. "	blue	
2 p. "	va. "	
<i>Britannia.</i>		
1856,	blue	50
"	red on blue paper	50
"	green	
"	red	50
"	magenta	
" (4 p.)	green	
" (8 p.)	magenta	
<i>Britannia Seated.</i>		
6 p. 1856,	blue	20
1 s. 1862,	vermillion	30
6 p. "	purple	1 00
1 s. 1863,	green	50

Head Victoria, in Circle.

New Used

1 p. 1861,	brown	5
2 p. "	blue	5
4 p. "	rose	5
6 p. 1862,	green	5
9 p. 1861,	lilac	10
1 s. 1862,	yellow	10
3 p. 1863,	vermillion	10
6 p. "	lilac	
1 s. "	green	
5 s. "	violet	25
1 s. 1870,	blue	5
9 p. 1872,	green	
10 p. "	(t329) maroon	

ENVELOPE STAMPS.

Profile of Queen in Different Poses.

6 p. 1863, (t330) violet	35
9 p. " (t331)	50
1 s. " (t332) yellow	
10 p. 1872, (233) blue	75
1 s. 8 p. " (334) lake	1 25



MECKLENBURG SCHWERIN, E.

48 SCHILLINGS = 1 THALER.

Arms.

1 s. 1856, (t325) red	20
3 s. " yellow	5
5 s. " blue	
5 s. 1864,	brown 20
1 s. 1865,	red 5
2 s. 1866,	violet 15

ENVELOPE STAMPS.

Name, Arms.

1 s. 1856	red	10	5
1 1/2 s. "	green	10	10
3 s. "	yellow	15	5
5 s. "	blue	25	
5 s. 1864,	brown	10	10
2 s. 1866,	violet	15	10



MECKLENBURG STRELITZ, E.

30 SILBER GROSCHEN =

48 SCHILLINGS = 1 THALER.

Arms.

1 1/2 s.g. 1864, rect. red	5
1 1/2 s.g. " " green	5
1 s. " " lilac	10
1 s.g. " oct. red	10
2 s.g. " " blue	8
3 s.g. " " brown	6

ENVELOPE STAMPS.

Same as Adhesive.

1 s.g. 1864,	rose
2 s.g. "	blue
3 s.g. "	brown



MEXICO, N. A.

8 REALES = 100 CENTAVOS = 1

DOLLAR.



New Used

1/2 r. 1856,	blue	50
1 r. "	yellow	25
2 r. "	green	20
4 r. "	red	50
8 r. "	violet	2 00

Same, on Colored Paper.

1/2 r. 1860,	buff	
1 r. "	green	15
2 r. "	pink	10
4 r. "	yellow	2 00
8 r. "	brown	75
4 r. 1863,	red	
3 r. "	on yellow	
3 r. "	green	
3 r. "	on brown	75



1 r. 1867,	scarlet
2 r. "	blue
4 r. "	brown
1 p. "	black

Same as First Issue, Tinted Paper.

1/2 r. 1867,	black	
1 r. "	blue	
2 r. "	green	25
4 r. "	pink	50
4 r. "	red	
	on yellow	15



1/2 r. 1861,	lilac	25	15
1 r. "	blue	25	10
2 r. "	orange	25	10
4 r. "	green	25	15
8 r. "	red	1 00	
3 c. 1865,	brown		



Lithographed.

New Used

7 c. 1866,	grey	50
13 c. "	blue	50
25 c. "	brown	25
50 c. "	green	50

Engraved.

7 c. 1866,	lilac	50
13 c. "	blue	25
25 c. "	blue	50
50 c. "	blue	25



1/2 r. 1867,	white	
1 r. "	blue	
2 r. "	green	
4 r. "	blue	
1 p. "	lilac	
1 r. "	green	
2 r. 1868	violet	2 00
2 r. "	rose	2 00



6 c. 1863,	buff	15	10
12 c. "	green	20	5
25 c. "	pink	20	5
50 c. "	yellow	40	10
100 c. "	brown	100	10
100 c. "	brown on b'n	125	



6 c. 1872, (seis),			
	green	25	10
12 c. "	(doce) blue	50	5
25 c. "	(vinticinco) red	50	5
50 c. "	(cincuenta) yellow	1 00	5
100 c. "	(cien) lilac	1 25	10



5 c. 1874,	brown	15	10
10 c. "	black	25	5
25 c. "	blue	50	5
50 c. "	green	1 00	10
100 c. "	carmine	2 00	15

ENVELOPE STAMPS.



			New Used
5 c. 1874,	brown		
10 c. "	green	40	10
25 c. "	blue	60	10

MODENA, E.

100 CENTESIMI = 1 LIRA.



5 c. 1852,	green	10	10
10 c. "	rose	10	10
10 c. "	violet	10	
15 c. "	yellow	10	10
25 c. "	buff	10	10
40 c. "	blue	10	
1 l. "	white	20	

NEWSPAPER STAMPS.

9 c. 1854,	violet		15
9 c. 1853,	va. "	2 00	1 00
10 c. 1859,	white		25

PROVISIONAL GOVERNMENT.



5 c. 1859,	green	12	
15 c. "	brown	12	
20 c. "	blue	12	
40 c. "	rose	12	
50 c. "	orange	12	

MOLDAVIA, E.

See Roumania.

MONTENEGRO, E.

100 SOLDI = 1 FLORIN.



2 s. 1874,	yellow	6	
3 s. "	green	8	
5 s. "	rose	13	
7 s. "	violet	17	
10 s. "	blue	20	
15 s. "	bistre	30	
25 s. "	violet brown	40	

MONTEVIDEO, S. A.

See Uruguay.



NAPLES, E.

See Two Sicilies.

NATAL, AF.

12 PENCE = 1 SHILLING.

Embossed on Colored Paper.

New Used

1 p. 1857, (t 336) blue		
1 p. " pink		
1 p. " yellow		
3 p. " (t 337) rose		
6 p. " green		
9 p. " blue		
1 s. " buff		

Head, Victoria.

1 p. 1860, carmine	8	5
3 p. " blue		6
6 p. " lilac		6
1 s. 1864, (t 338) green		15

Same Surcharged "Postage" in Several Styles.

1 p. 1871, carmine		5
3 p. " blue		6
6 p. " lilac		6
1 s. " green		10
1 s. 1873, claret		



1 p. 1874, carmine	6	5
3 p. " ultramarine		
6 p. " violet		
5 s. " (t 339) claret		



NEVIS, W. I. I.

12 PENCE = 1 SHILLING.



1 p. 1861, lake		35
4 p. " "		
6 p. " lavender		30
1 s. " green		
1 p. 1867, vermilion	6	6
4 p. " orange		15
1 s. " light green		25

NEW BRUNSWICK, N. A.

12 PENCE = 1 SHILLING.

100 CENTS = 1 DOLLAR.

Name. Crown in Centre.

New Used

3 p. 1857,	red	1 00	20
6 p. " "	yellow	2 50	1 50
1 s. " "	violet	6 00	5 00

Various Designs.

1 c. 1860, (t 340)	brown	5	
2 c. 1863, (t 341)	orange		10
5 c. 1860, (t 342)	green		5
10 c. " "	vermilion		5
12½ c. " (t 343) blue			10
17 c. " (t 344) black			



NEW CALEDONIA, AF.

100 CENTIMES = 1 FRANC.

10 c. 1860,	grey	50
Set of Photographs,		50 varieties 50

NEW FOUNDLAND, N. A.

12 PENCE = 1 SHILLING.
100 CENTS = 1 DOLLAR.



1 p. 1857, (t 345)	brown	6	
3 p. " (t 346) green		25	
5 p. " (t 345) brown		30	
2 p. " vermilion			25
4 p. " "			25
6 p. " "			
6½ p. " "			
8 p. " "			
1 s. " "			
2 p. 1860,	lake	15	
4 p. " "		25	15
6 p. " "		40	20
6½ p. " "		50	
8 p. " "		50	
1 s. " "		60	50

Different Designs.

2 c. 1866, (t 345) green	5	5
5 c. " (t 346) brown		
10 c. " (t 347) black	20	5
12 c. " (t 348) pink	25	10
13 c. " (t 349) orange	30	8
24 c. " (t 350) blue	50	25
1 c. " (t 351) lilac	5	5
5 c. " (t 346) black	12	
3 c. 1870, (t 352) red		10
6 c. " (t 353) carmine	15	10
1 c. 1871, (t 351) violet	5	5
3 c. 1873, (t 352) blue	8	8



NEW GRANADA, S. A.
See United States of Colombia.



NEW SOUTH WALES, O.
12 PENCE = 1 SHILLING.
View of Sidney.

	New Used	
1 p. 1850,	red	1 00
1 p. "	va. "	1 00
1 p. "	" "	
2 p. "	blue	75
2 p. "	va. "	75
2 p. "	" "	
3 p. "	green	1 00
3 p. "	va. "	1 00
3 p. "	" "	



Blue Paper.

1 p. 1851,	carmine	40
2 p. "	blue,	10
3 p. "	green,	25
6 p. 1852,	b'wn,	50
8 p. 1853,	orange	1 50

White Paper.

1 p. 1854,	orange	25
2 p. "	blue	10
3 p. "	green	15



1 p. 1856,	red	5
2 p. "	blue	5
3 p. "	green	10

Large Rectangle.

5 p. 1854,	green	15
6 p. "	brown	15
6 p. "	sea green	20
6 p. 1861,	violet	5
8 p. 1854,	orange	20
1 s. "	rose	5
5 s. 1860,	(t.354)violet	20

Profile Victoria, Different Frames.

1 p. 1861, (t.355) red	6	2
2 p. 1868, (t.356) blue		2
4 p. 1867, (t.357) red		10
10 p. " (t.358) lilac		10
9 p. 1871, " red		10
6 p. 1872, (t.359) violet		3

REGISTERED LETTER STAMPS.

1853,	red and blue	10
"	orange " "	1 00

SIDNEY ENVELOPE STAMPS,
Arms Embossed in Relief, Circular.
New Used
(2 p.) 1849, white pa. 5 00
(2 p.) " blue pa.

NEWSPAPER BAND STAMPS.
1 p. 1864, (t.360) red 10
1 p. 1865, (t.355) " 5

NEW ZEALAND, O.

12 PENCE = 1 SHILLING.



Blue Paper.

1 p. 1855,	red	
2 p. "	blue	
1 s. "	green	

White Paper.

1 p. 1859,	red	3
2 p. "	blue	5
3 p. 1868,	violet	5
4 p. 1865,	red	50
4 p. 1866,	yellow	10
6 p. 1859,	brown	3
1 s. "	green	3
1 p. 1872,	brown	5
2 p. "	vermillion	5
6 p. "	blue	5



2a p. 1873, (t.361) red	3
1 p. " (t.362) violet	2
2 p. " (t.363) pink	3
3 p. " (t.364) brown	10
4 p. " (t.365) maroon	10
6 p. " (t.366) blue	5
1 s. " (t.367) green	5

NICARAGUA, S. A.

100 CENTAVOS = 1 PESO.



2 c. 1862,	blue	15
5 c. "	black	15
1 c. 1869,	brown	10
10 c. "	red	30
25 c. "	green	50

NORTH GERMAN CONFEDERATION, E.

See Germany.

NORWAY, E.

120 SKILLINGS = 1 SPECIE DALER.
New Used
4 s. 1854, (t.368) blue 5



2 c. 1856,	yellow	
3 c. "	lilac	
4 c. "	blue	
8 c. "	red	



2 s. 1865,	yellow	5
3 s. 1866,	lilac	5
4 s. 1861,	blue	3
8 s. 1863,	pink	5
24 s. "	brown	5



1 s. 1868,	black	2
2 s. 1869,	orange	3
3 s. 1862,	violet	3
4 s. 1867,	blue	2
8 s. "	rose	3



2 s. 1872,	blue	10
3 s. "	carmine	5
4 s. "	violet	5
1 s. 1873,	green	5
7 s. "	brown	5

ENVELOPE STAMPS.

Same as Adhesives.

2 s. 1873,	blue	
3 s. "	carmine	10



NOVA SCOTIA, N. A.

12 PENCE = 1 SHILLING,
100 CENTS = 1 DOLLAR.

1 p. 1857, head, b'wn	25
3 p. " flowers, blue	
6 p. " " green	35
1 s. " " violet	

Head Victoria.

			New Used
1 c.	1860,	black	5
2 c.	1863,	violet	
5 c.	1860,	blue	5
8 1/2 c.	"	green	25
10 c.	"	vermillion	5
12 1/2 c.	"	black	10



OLDENBURG, E.

30 SILBER GROSCHEN - 1 THALER.

Arms, Colored Paper.

1/3 s. g.	1855,	green	50
1-30 t.	1852,	blue	5
1-15 t.	"	pink	15
1-10 t.	"	yellow	10

Same, Arms Large.

1/3 g.	1860,	green	5
1 g.	"	blue	5
2 g.	"	pink	15
3 g.	"	yellow	20

Same, White Paper.

1/4 g.	1861,	orange	10
1/3 g.	"	green	
1/2 g.	"	brown	15
1 g.	"	blue	15
2 g.	"	red	20
3 g.	"	yellow	20



1/3 s.	1862,	green	6
1/2 s.	"	orange	5
1 s.	"	rose	5
2 s.	"	blue	5
3 s.	"	brown	5

ENVELOPE STAMPS.

Arms in Oval.

1/2 s.	1860,	brown	30
1 s.	"	blue	30
2 s.	"	rose	40
3 s.	"	yellow	50
1/2 s.	1862,	vermillion	5
1 s.	"	rose	10
2 s.	"	blue	15
3 s.	"	brown	30



ORANGE STATES, AF.

12 PENCE = 1 SHILLING.



1 p.	1868	brown	6
6 p.	"	pink	30
1 s.	"	orange	65

PARAGUAY, S. A.

8 REALES = 1 PESO.



1 r.	1870,	(t 369) rose
2 r.	"	(t 370) blue
3 r.	"	(t 371) black

New Used

PARMA, E.

100 CENTESIMI - 1 LIRA.



5 c.	1852,	yellow	75
15 c.	"	red	15
25 c.	"	black	15

Same, Colored Paper.

5 c.	1857,	yellow	
10 c.	"	white	5
15 c.	"	pink	15
25 c.	"	violet	15
40 c.	"	blue	25

Due di Parma.

15 c.	1858,	pink	15
25 c.	"	brown	15
40 c.	"	blue	15

NEWSPAPER STAMPS.

6 c.	1857,	rose	10
9 c.	1854,	blue	10

PROVISIONAL GOVERNMENT.

Stati Parm. Octagon.

5 c.	1859,	green	10
10 c.	"	brown	10
20 c.	"	blue	10
40 c.	"	red	15
80 c.	"	orange	



PERU, S. A.

100 CENTAVOS = 10 DINEROS
= 5 PESETAS = 1 PESO.



1 d.	1858,	blue	25
1 p.	"	red	50
1/2 p.	"	orange	
1 d.	"	(t 372) blue	75
1 p.	"	" red	75
1 d.	1860,	(t 373) blue	25
1 p.	"	" red	50

Embossed Arms.

			New Used
1 d.	1862,	red	10
1 p.	1863,	brown	15
1 d.	1868,	green	3
1 p.	1871,	orange	10



Similar to Out.

5 c.	1866,	green	10
10 c.	1867,	red	25
20 c.	"	brown	10

Various Designs.

5 c.	1867,	(t 374) red	10
2 c.	1873,	(t 375) blue	10
2 c.	1874,	(t 376) purple	10
50 c.	"	(t 377) green	
1 s.	"	(t 378) red	

UNPAID LETTER STAMPS.



5 c.	1874,	vermillion	15
10 c.	"	orange	15
20 c.	"	blue	25
50 c.	"	brown	75

ENVELOPE STAMPS.



2 c.	1874,	blue
5 c.	"	green
10 c.	"	red
20 c.	"	purple
50 c.	"	rose

PACIFIC STEAM NAVIGATION CO.

Steamship in Oval.

1 r.	1857,	blue
2 r.	"	"
1 r.	"	brown
2 r.	"	claret
1 r.	1868,	yellow
2 r.	"	"
1 r.	"	green
2 r.	"	"

PHILIPPINE ISLANDS, O.

8 CUARTOS = 1 REAL, 100 CENTIMOS = 1 PESETA OR ESCUDO.

Head, *Isabella II.* New Used

- 5 c. 1854, red
- 5 c. " orange
- 10 c. " carmine
- 1 r. " blue
- 2 r. " green



- 5 c. 1859 vermilion
- 5 c. " red 1 00
- 10 c. " rose 1 00
- 5 c. 1863, ver'n
- 5 c. " carmine
- 1 r. " violet
- 2 r. " blue
- 1 r. p. f. " grey
- 1 r. p. f. " green



- 3/8 c. black on buff 25
- 6/4 c. green on rose 35
- 12 1/2 c. blue on flesh 70
- 25 c. rose on pink 85



- 5 c. 1870, blue
- 10 c. " green
- 20 c. " brown
- 40 c. " rose

Head, *Amadeus.*

- 12 c. 1872, rose
- 16 c. " ultramarine
- 62 c. " lilac
- 125 c. " bistre.

Figure of *Liberty.*

- 12 c. 1874, slate
- 62 c. " carmine
- 125 c. " stone



POLAND, E.

100 KOPECS = 1 RUBLE.

New Used

10 k. 1860, (t 379) blue & rose

ENVELOPE STAMPS.

Arms, *Circular.*

red

smaller, red

- 3 k. 1860, blue
- 10 k. " black

PORTUGAL, E.

1000 REIS = 1 MILREIS.



Each Value Different up to 1860 Issue, but Similar to Out Above Series.

- 5 r. 1853, brown 40
- 25 r. " blue 30
- 50 r. " green 60
- 100 r. " lilac 1 00



- 5 r. 1855, brown 15
- 25 r. " blue 15
- 50 r. " green 15
- 100 r. " lilac 15
- 5 r. " va. brown 15
- 25 r. " " blue 25
- 25 r. " " rose 10



- 5 r. 1862, brown 8
- 10 r. " yellow 10
- 25 r. " rose 20
- 50 r. " green 25
- 100 r. " lilac 40



- 5 r. 1866, black 5
- 10 r. " yellow 8
- 20 r. " straw 15
- 25 r. " rose 20
- 50 r. " green 25

- 80 r. " orange 30
- 100 r. " lilac 50
- 120 r. " blue 60
- 240 r. 1870, mauve 15



- 5 r. 1871, black 5
- 10 r. " yellow 8
- 20 r. " straw 20
- 25 r. " rose 20
- 50 r. " green 25
- 80 r. " orange 30
- 100 r. " lilac 50
- 120 r. " blue 60
- 240 r. 1873, mauve 15



PORTUGUESE INDIES, A

1000 REIS = 1 MILREIS.



- 10 r. 1872, black 10
- 20 r. " vermilion 20
- 40 r. " blue 40
- 100 r. " green
- 200 r. " yellow
- 300 r. " bright violet
- 600 r. " " "
- 900 r. " " "

PRINCE EDWARD ISLAND, N. A.

12 PENCE = 1 SHILLING, 100 CENTS = 1 DOLLAR.



Each Frame Different Design

- 1 p. 1860, (t 380) orange 5
- 2 p. " (t 381) rose 10
- 3 p. " (t 382) blue 15
- 4 p. 1869, (t 383) bl'k 15
- 4 1/2 p. 1870, (t 384) brown 20
- 6 p. 1860, (t 385) green 30
- 9 p. " (t 386) lilac 45
- 1 c. 1872, (t 387) orange 5
- 2 c. " (t 388) blue 6
- 3 c. " (t 389) rose 15
- 4 c. " (t 390) green 5
- 6 c. " (t 391) black 20
- 12 c. " (t 392) purple 10

PRUSSIA, E.

12 PFENNIGE = 1 GROSCHEN.



		New	Used
4 pf. 1856,	green	10	5
2 s.g. 1850,	orange	10	5
<i>Colored Paper.</i>			
1 s.g. 1850,	pink	20	2
2 s.g. "	blue	20	3
3 s.g. "	yellow	20	2
<i>White Paper, Plain Ground.</i>			
1 s.g. 1857,	rose	5	5
2 s.g. "	blue	10	10
3 s.g. "	yellow	5	5
<i>Checkered Ground.</i>			
4 pf. 1858,	green	5	5
1 s.g. "	rose	2	2
2 s.g. "	blue	2	2
3 s.g. "	yellow	2	2
<i>Embossed Arms.</i>			
3 pf. 1865,	violet	3	3
4 pf. 1861,	green	5	1
5 pf. "	orange	5	1
1 s.g. "	rose	7	1
2 s.g. "	blue	7	1
3 s.g. "	brown	10	1
10 s.g. 1866,	rose	5	10
30 s.g. "	blue	10	10



1 k. 1867,	green	5	5
2 k. "	orange	5	5
3 k. "	rose	5	5
6 k. "	blue	5	5
9 k. "	brown	10	10

ENVELOPE STAMPS.



Silk Thread: in Paper.

1 s.g. 1851,	rose	10
2 s.g. "	blue	10
3 s.g. "	yellow	10



Now Used

4 s.g. 1851,	brown	30
5 s.g. "	violet	20
6 s.g. "	green	20
7 s.g. "	red	20

Same Without Threads.

1 s.g. 1856,	rose	6
2 s.g. "	blue	6
3 s.g. "	orange	6

Same as Adhesives.

1 s.g. 1861,	rose	25	10
2 s.g. "	blue	25	10
3 s.g. "	brown	25	10

Same with Inscription Crossing Stamp.

3 pf. 1868,	violet	25	
6 pf. "	orange	25	
1 s.g. 1862,	rose	5	2
2 s.g. "	blue	10	2
3 s.g. "	brown	15	2
1 k. 1867,	green	10	
2 k. "	orange	10	
3 k. "	rose	15	3
6 k. "	blue	20	3
9 k. "	brown	25	3

QUEENSLAND O.

12 PENCE = 1 SHILLING.



1 p. 1861,	carmine	15
2 p. "	blue	15
3 p. "	brown	5
6 p. "	dark green	10
1 s. "	violet	6
1 p. 1863,	orange	2
4 p. 1866,	violet	5
6 p. "	light green	5
1 s. "	brown	5
5 s. 1867,	rose	50
1 s. 1873,	claret	10
1 s. 1875,	purple	

REGISTERED LETTER STAMPS.

Same, 1861,	yellow	15
-------------	--------	----

REUNION ISLAND, AF.

100 CENTIMES = 1 FRANC.

15 c. 1852, (t 393)	bl'k
30 c. "	(t 394) "

ROMAGNA, E.

100 BAJOCCHI = 1 SCUDO.



2 b. 1859,	yellow	10
1 b. "	drab	10
2 b. "	yellow	10
3 b. "	green	10
4 b. "	buff	10
5 b. "	violet	10
6 b. "	green	10
8 b. "	rose	10
20 b. "	blue	10

ROMAN STATES, E.

100 BAJOCCHI = 1 SCUDO.
100 CENTESIMI = 1 LIRA.



Now Used

2 b. 1852, (t 395)	grey	10	10
1 b. "	(t 396) green	3	3
2 b. "	(t 397) "	3	3
3 b. "	(t 398) buff	5	5
4 b. "	(t 399) yellow	5	5
4 b. "	buff	15	15
5 b. "	(t 400) rose	3	3
6 b. "	(t 401) pale blue	3	3
7 b. "	(t 402) blue	5	5
8 b. "	(t 403) white	3	3
50 b. "	(t 404) blue	25	25
1 s. "	(t 405) rose	75	75
2 b. 1866, (t 96)	violet	5	5

Same on Glazed Paper.

2 c. 1867, (t 397)	green	5	3
3 c. "	(t 395) grey	10	10
5 c. "	(t 398) blue	5	3
10 c. "	(t 403) scarlet	5	2
20 c. "	(t 399) carmine	5	3
40 c. "	(t 400) yellow	5	5
80 c. "	(t 396) rose	5	5



ROUMANIA, E.

40 PARAS = 100 BANI = 1 PIASTRE.

Ox's Head, Circular.

54 p. 1854,	green
81 p. "	blue
108 p. "	pink



5 p. 1861,	black
40 p. "	blue
80 p. "	pink

Ox Head, Eagle and Horn.

3 p. 1862,	yellow	50	
6 p. "	red	25	
30 p. "	blue	50	15

Head of Couza, to Right.

2 p. 1865,	yellow	5
5 p. "	blue	10
20 p. "	carmine	20



Colored Paper.

2 p. 1866,	yellow	5	
5 p. "	blue	10	
20 p. "	rose	25	15



			New Used
2 b.	1868,	orange	10 5
4 b.	"	blue	5 5
18 b.	"	rose	5 5
3 b.	1870,	mauve	10 5



5 b.	1869,	yellow	
10 b.	"	blue	15 5
15 b.	"	red	25 5
25 b.	"	blue & orange	5 5
50 b.	"	red & blue	7 5



5 b.	1871,	scarlet	10
10 b.	"	yellow	5
15 b.	"	red	15
25 b.	"	brown	10
50 b.	"	red & blue	
10 b.	1872,	"	5



1 1/2 b.	1873,	olive	2
3 b.	"	yellow gr'n	3
5 b.	"	bistre	5
10 b.	"	blue	10
15 b.	"	red brown	15
25 b.	"	orange	25
50 b.	"	rose	40

NEWSPAPER WRAPPERS.

1 1/2 b.	1870, (t 406)	green	6
1 1/2 b.	1871, (t 407)	yellow	5



RUSSIA, E.

100 KOPECS = 1 RUBLE.



			New Used
10 k.	1857,	b'wn & blue	25 3
20 k.	1858,	blue & orange	40 5
30 k.	"	carmin & gr'n	60 10
5 k.	1863,	blue & bl'k	
1 k.	1864,	yellow & black	3 3
3 k.	"	green & "	10 3
5 k.	"	lilac & "	15 5
3 k.	1870,	gr'n & "	25
2 k.	1875,	bl'k & pink	
8 k.	"	grey & pink	

ENVELOPE STAMPS.



5 k.	1848,	blue	
10 k.	"	black	10
20 k.	"	blue	
30 k.	"	red	



5 k.	1869, (t 408)	violet	
5 k.	1870, (t 409)	rose	20
10 k.	1869,	brown	35
20 k.	"	blue	45
30 k.	"	rose	75

NOTE.—There is a large number of stamps issued by the local authorities in towns, but they are not collected in this country.



SALVADOR, S. A.

8 REALES = 1 PESO.

Mountain View.

1/2 r.	1867,	blue	15
1 r.	"	red	20
2 r.	"	green	40
4 r.	"	brown	1 00

Surcharged with Arms in Circle.

1 1/2 r.	1874,	blue	25
1 r.	"	red	10
2 r.	"	green	10
4 r.	"	brown	35

SANDWICH ISLES, O.

100 CENTS = 1 DOLLAR.



			New Used
2 c.	1852, (t 410)	blue	
5 c.	"	"	
15 c.	"	(t 411)	"
13 c.	"	(t 412)	"

Head, Kamehameha III.

5 c.	1853, (t 413)	blue	25
13 c.	"	(t 414)	red



Blue Paper.

1 c.	1859,	blue	
2 c.	"	"	
5 c.	1865,	"	
5 c.	1867,	"	20
1 c.	"	black	
2 c.	"	"	

White Paper.

1 c.	1863,	black	
2 c.	"	"	
1 c.	1865,	blue	
2 c.	1852, (t 415)	rose	30 20



Different Portraits on Each.

2 c.	1864, (t 416)	vermillion	10
5 c.	1866, (t 417)	blue	25
1 c.	1871, (t 418)	violet	5
6 c.	"	(t 419) green	20
18 c.	"	(t 420) pink	50
2 c.	1875, (t 421)	b'wn	6
12 c.	"	(t 422) black	30



SARAWAK, O.

100 CENTS = 1 FLORIN.
Tinted Paper.

3 c. 1869, (t 423) b'wn New Used
20



3 c. 1871. brown 10
2 c. 1874. mauve 5
4 c. " brown 15
6 c. " green 20
8 c. " blue 30
12 c. " rose 40

SARDINIA, E.

See Italy.

SAXONY, E.

10 PFENNIG = 1 GROSCHEN.

3 p. 1850, (t 424) red



1/2 n.g. 1851, white 10
1 n.g. " pink 5
2 n.g. " blue 5
3 n.g. " yellow 5
3 p. 1854, (t 425) green 3



1/2 n.g. 1854, white 3
1 n.g. " pink 3
2 n.g. " blue 3
3 n.g. " yellow 3
5 n.g. 1856, vermillion 5
10 n.g. " blue 10



3 p. 1863, (t 426) green 2
1 n.g. " orange 1
1 n.g. " pink 1
2 n.g. " blue 1
3 n.g. " brown 1
5 n.g. " violet 1

ENVELOPE STAMPS.



1 n.g. 1856, rose 10
2 n.g. " blue 10
3 n.g. " yellow 15
5 n.g. " lilac 15
10 n.g. " green 25



1/2 n.g. 1865, (t 427) orange 5 3
1 n.g. 1863, rose 5 3
2 n.g. " blue 10 5
3 n.g. " brown 15 5
5 n.g. " violet 25 5

SCHLESWIG HOLSTEIN, E.

16 SCHILLINGS = 1 MARK.



1 s. 1850, blue 20
2 s. " pink 50



1/2 s. 1865, rose 5
1 1/4 s. " green 7
1 3/4 s. " lilac 8
2 s. " blue 10
4 s. " brown 15

Schleswig.



1 1/4 s. 1864, green 5
4 s. " rose 10 10

1/2 s. 1865, green 4 3
1 1/4 s. " violet 6 3
1 3/4 s. " rose 6 5
2 s. " blue 8 5
4 s. " brown 15 10

Holstein.

Figure. Small Rect.

1 1/4 s. 1864, (t 428) blue 5
1 1/4 s. " (t 429) " 5
1 1/4 s. " (t 430) " 5



1/2 s. 1865, green 5
1 1/4 s. " mauve 5
2 s. " blue 5

Colored Letters.

1 1/2 s. 1865, rose 7 5
4 s. " brown 10 7
1 1/4 s. 1866, mauve 7 3
2 s. 1867, blue 7 3



SERVIA, E.

40 PARAS = 1 PIASTRE.

Arms.

1 p. 1866, green 8
on rose 8
2 p. " brown on lilac 8

Head, Michael, Large.

1 p. 1866, green 5
2 p. " brown 10
10 p. " orange 10
20 p. " rose 20
40 p. " blue 25



1 p. 1869, yellow 3
10 p. " brown 7
15 p. " orange 10
20 p. " blue 15 5
25 p. " rose 15
35 p. " light green 15
40 p. " mauve 20
50 p. " dark green 30 10
2 p. 1873, black 5



SHANGHAI, A.

New Used

100 CANDAREENS = 1 TAEL,
100 CRTS = 1 DOLLAR.



1 ca. 1865,	blue	10
2 ca. "	black	10
3 ca. "	brown	20
4 ca. "	yellow	30
6 ca. "	red brown	40
8 ca. "	green	60
12 ca. "	brown	85
16 ca. "	red	1 00



2 ca. 1866,	rose	10
4 ca. "	lilac	25
8 ca. "	blue	50
16 ca. "	green	1 00
1 ca. 1866,	brown	10
3 ca. "	orange	
6 ca. "	grey	1 00
12 ca. "	brown	1 20
1 ca. 1874,	lilac	10
1 ca. "	blue	
3 ca. "	rose	



SICILY, E.

See Two Sicilies.



SIERRA LEONE, AF.

12 PENCE = 1 SHILLING.

6 p. 1861, (t 431) lilac 35 15



1 p. 1872,	carmine	6	5
2 p. 1873,	violet	15	
3 p. 1872,	yellow	20	15
4 p. "	blue	25	10
1 s. "	green	60	25

SOUTH AFRICAN REPUBLIC, AF.

12 PENCE = 1 SHILLING.



1 p. 1869,	red	10
3 p. "	purple	30
6 p. "	blue	50
1 s. "	green	75
1 p. 1871,	black	6

New Used



SOUTH AUSTRALIA, O.

12 PENCE = 1 SHILLING.

Head, Victoria.

1 p. 1855,	green	10
2 p. "	carmine	10
6 p. "	blue	5
1 s. 1857,	yellow	20
1 p. 1860,	green	5
2 p. "	orange	5
6 p. "	violet	10
1 s. 1863,	brown	10

Profile in Oval Frame.

9 p. 1860,	lilac	15
10 p. 1866,	orange	25
10 p. 1867,	yellow	25
9 p. 1873,	purple	



Similar to Out.

2 p. 1869,	orange	15	2
3 p. 1870,	blue		
3 p. 1871,	"		15
4 p. 1867,	violet		15
2 s. "	red		10



SPAIN, E.

8 CUARTOS = 1 REAL, 100 CENTIMOS
= 1 PESETA OR ESCUDO.



New Used

6 c. 1850, (t 432) bl'k		5
12 c. "	lilac	75
5 r. "	red	50
6 r. "	blue	2 00
10 r. "	green	1 50



6 c. 1851, (seis) bl'k		5
12 c. "	(doce) lilac	75
2 r. "	(dos) red	
5 r. "	(cinco) rose	75
6 r. "	(seis) blue	3 00
10 r. "	(diez) green	1 00



6 c. 1852,	rose	4
12 c. "	violet	75
2 r. "	red	
5 r. "	green	50
6 r. "	blue	2 50



6 c. 1853,	red		1 00
12 c. "	violet		
2 r. "	vermillion		50
5 r. "	green		
6 r. "	blue		



2 c. 1854, (t 437) green		4 00
4 c. "	rose	10
6 c. "	red	5
1 r. "	(t 438) blue	
2 r. "	scarlet	
5 r. "	green	
6 r. "	blue	



Blue Paper. Watermark of Loops.

		New Used
2 c. 1855,	green	40
4 c. "	carmine	10
1 r. "	blue	25
2 r. "	brown	15

Rough Impression on White Paper.

2 c. 1856,	green	75
4 c. "	rose	15
1 r. "	blue	50
2 r. "	violet	15

Same on Plain White Paper.

2 c. 1857,	green	20
4 c. "	rose	5
1 r. "	orange	25
1 r. "	blue	20
2 r. "	violet	15



2 c. 1860,	green	15
4 c. "	orange	5
12 c. "	red	10
19 c. 1861,	brown	
1 r. "	blue	10
2 r. "	lilac	5



2 c. 1862,	blue	10
4 c. "	brown	10
12 c. "	blue	25
19 c. "	rose	
1 r. "	chocolate	25
2 r. "	green	30



2 c. 1864,	blue	10
4 c. "	red	10
12 c. "	green	30
19 c. "	violet	10
1 r. "	brown	25
2 r. "	blue	30



		New Used
2 c. 1865,	rose	8
4 c. "	blue	10
12 c. "	blue & pink	25
19 c. "	brown "	10
1 r. "	green	20
2 r. "	rose	20



2 c. 1866,	pink	
4 c. "	blue	10
12 c. "	orange	25
19 c. "	brown	10
10 c. de e. 1866,	green	20
20 c. de e. "	lilac	30
20 c. "	(t432) "	25



2 c. 1867,	brown	
4 c. "	blue	8
12 c. "	orange	20
19 c. "	rose	10
10 c. de e. 1867,	green	20
20 c. de e. "	lilac	30
19 c. 1868,	brown	3
25 m. de e. 1867,	blue & rose	15
50 m. de e. "	brown	25
25 m. de e. 1869,	blue	20
50 m. de e. "	(t 433) violet	25
100 m. de e. "	brown	25
200 m. de e. "	green	50
5 m. de e. 1869,	(t 434) green	3
10 m. de e. 1869,	(t 434) brown	5



1 m. de e. 1870,	b'wn	1
2 m. de e. "	"	3
2 m. de e. "	buff	1
4 m. de e. "	bistre	2
10 m. de e. "	rose	3
25 m. de e. "	violet	8
50 m. de e. "	blue	12

		New Used
100 m. de e. 1870,	red	25
200 m. de e. "	brown	30
400 m. de e. "	green	25
12 c. "	lake	60
19 c. "	green	75
1 c. 600 m. "	violet	1
2 c. "	blue	2



6 c. de p. 1872,	blue	15
10 c. de p. "	lilac	15
12 c. de p. "	violet	5
25 c. de p. "	brown	15
40 c. de p. "	bistre	25
50 c. de p. "	green	25
5 c. de p. 1873,	pink	3
10 c. de p. "	blue	5
20 c. de p. "	violet	
1 p. 1872,	(t 435) "	50
4 p. "	brown	1
10 p. "	green	3

Figure of Value in Centre, for Circulars.

4 c. de p. 1872,	(t 436) blue	2
2 c. de p. "	(t 434) mauve	2
5 c. de p. "	green	5
4 c. de p. 1873,	(t 436) green	2



2 c. de p. 1874,	orange	2
5 c. de p. "	carmine	2
10 c. de p. "	green	2
20 c. de p. "	black	25
25 c. de p. "	brown	5
40 c. de p. "	violet	5
50 c. de p. "	blue	5
1 p. "	purple	10
4 p. "	brown	
10 p. "	claret	



2 c. de p. 1874,	yellow	5
5 c. de p. "	purple	3
10 c. de p. "	blue	3
20 c. de p. "	green	
25 c. de p. "	brown	5
40 c. de p. "	violet	5
50 c. de p. "	orange	5
1 p. "	green	15
4 p. "	carmine	
10 p. "	black	
10 c. de p. "	(t 437) brown	10

OFFICIAL STAMPS.



New Used

1/2 o. 1854, (media)	yellow	z	
1 o. "	(una) pink	z	
4 o. "	(cuatro) green	z	
1 l. "	blue		



1/2 o. 1855,	yellow	6	10
1 o. "	pink	6	10
4 o. "	green	6	10
1 l. "	blue		

WAR STAMPS.

5 c. de p. 1874,	bl'k	5	5
10 c. de p. "	blue		10
5 c. de p. 1875, (t 438)	green		10
10 c. de p. "	(t 438) green		

FOR CITY OF MADRID.

1 c. 1853,	bronze	3	00
3 c. 1852,	"		



SPANISH WEST INDIES, W. I. I.

8 REALS PLATA = 1 PESO, 100 CENTESIMOS = 1 ESCUDO OR PESETA.



New Used

Blue Paper.

1/2 r. p. 1855,	blue	20	
1 r. p. "	green	75	30
2 r. p. "	carmin	1 50	50
2 1/4 r. p. "	"	5 00	3 50

Rough Paper.

1/2 r. p. 1856,	blue	10	
1 r. p. "	green	25	
2 r. p. "	red		
2 1/4 r. p. "	"		

Smooth Paper.

1/2 r. p. 1857,	blue	15	5
1 r. p. "	green	30	10
2 r. p. "	red	60	20
2 1/4 r. p. "	"	60	



1/4 r. p. 1864,	black		
	on yellow		
1/4 r. p. "	black		
	surch'd 66		
1/2 r. p. "	gr'n on red	5	
1 r. p. "	blue		
	on orange	10	
2 r. p. "	red on pink	20	
1/4 r. p. "	(t 440) bl'k	40	

Same, Dated.

5 c. 1866,	lilac	5	
10 c. "	blue		
20 c. "	green	10	
40 c. "	rose	50	
5 c. 1867,	lilac	15	
10 c. "	blue	15	5
20 c. "	green		
40 c. "	rose		



5 c. 1868,	lilac		
10 c. "	blue	5	
20 c. "	green		
40 c. "	pink		
5 c. 1869,	"		
10 c. "	brown	5	
20 c. "	orange	10	
40 c. "	lilac	50	



New Used

5 c. 1870,	blue	25	
10 c. "	green	5	
20 c. "	brown	10	
40 c. "	rose	40	



12 c. de p. 1871,	lilac	10	
25 c. de p. "	blue	15	3
50 c. de p. "	green	25	5
1 p. "	brown	75	15



12 1/2 c. de p. 1873,	gr'n	10	10
25 c. de p. "	violet	15	3
50 c. de p. "	brown	25	10
1 p. 1873,	red	75	

Same as 1871 Issue.

12 1/2 c. de p. 1874,	b'wn	10	10
25 c. de p. "	blue	15	2
50 c. de p. "	violet	25	10
1 p. "	pink	75	



12 1/2 c. de p. 1875,	purple	10	10
25 c. de p. "	blue	15	5
50 c. de p. "	green	25	10
1 p. "	brown	75	



ST. CHRISTOPHER, W. I. I.

12 PENCE = 1 SHILLING.



		New Used
1 p. 1870,	pink	6
6 p. "	green	50 10



ST. DOMINGO, W. I. I.

8 REALS = 1 PESO.



½ r. 1862, Italic	letters, rose	
1 r. "	" green	
½ r. 1865, Roman let.	green	2 00
1 r. "	" buff	



½ r. 1866,	straw	
1 r. "	green	50
½ r. 1867,	pink	25 25
1 r. "	blue	25 15
½ r. 1868,	lavender	
1 r. "	(t 441) pink	
½ r. 1869,	flush	
½ r. "	green	
1 r. "	"	
1 r. "	(t 441) "	
1 r. "	" blue	
1 r. "	salmon	
½ r. 1871, blue&black	on pink	25
1 r. "	dark green	25 15
½ r. 1873,	yellow	25 15

ST. HELENA, AF.

12 PENCE = 1 SHILLING.

New Used

1 p. 1863,	red	6	
2 p. "	yellow	15	
3 p. "	violet	25	
4 p. "	carmine	30	15
6 p. 1859,	blue	35	15
1 s. 1863,	green	60	10
5 s. 1868,	orange		75



ST. LUCIA, W. I. I.

12 PENCE = 1 SHILLING.

Head, Victoria.

1 p. 1860,	red		
4 p. "	blue		
6 p. "	green		
1 p. 1865,	black	8	
4 p. "	yellow	25	20
6 p. "	violet	35	20
1 s. "	orange	60	15



ST. THOMAS & PRINCE ISLANDS, AF.

1000 REIS = 1 MILREIS.



5 r. 1870,	black	
10 r. "	yellow	
20 r. "	stone	
25 r. "	red	
50 r. "	green	
100 r. "	violet	

ST. VINCENT, W. I. I.

12 PENCE = 1 SHILLING.

Head Victoria.

1 p. 1860,	red	5	
6 p. "	green	10	
4 p. 1866,	blue	20	
1 s. "	blue black		
4 p. 1870,	orange	35	
1 s. "	brown	30	20
1 p. 1871,	black	6	6
1 s. 1872,	red	60	25
1 s. 1875,	pink	60	25



STRAITS SETTLEMENTS, A.

100 CENTS = 1 DOLLAR.



Printed Over Different Values of Indian Stamps.

		New Used
1½ c. 1867,	blue	15 10
2 c. "	brown	15 5
3 c. "	"	20 5
4 c. "	"	20 10
6 c. "	yellow	30 10
8 c. "	"	40 5
12 c. "	green	50 25
24 c. "	rose	75 15
32 c. "	yellow	1 00 20



Similar to Out.

2 c. 1868,	brown	5
4 c. "	rose	5 5
6 c. "	lilac	5 5
8 c. "	orange	5 5
12 c. "	blue	5 5
24 c. "	green	5 5
32 c. "	vermillion	10
96 c. "	slate	1 50 10
30 c. 1872, (t 442)	claret	75 10

SWEDEN, E.

48 SKILLINGS BANCO = 1 RIKS DALER,
100 ORE = 1 RIKS DOLLAR.



3 s. b. 1855,	green	
4 s. b. "	blue	
6 s. b. "	grey	25 15
8 s. b. "	yellow	15 15
24 s. b. "	red	50 30
5 o. 1858,	green	3
9 o. "	violet	12 10
12 o. "	blue	15 2
24 o. "	orange	25 2
30 o. "	brown	30 2
50 o. "	rose	50 3
3 o. 1863, (t 443)	bistre	2
17 o. 1866,	" violet	10
20 o. "	" red	5



		New	Used
3 o.	1872, brown	2	2
5 o.	" green	3	2
6 o.	" purple	5	2
12 o.	" blue	8	2
20 o.	" vermilion	12	3
24 o.	" orange	15	2
30 o.	" brown	20	3
50 o.	" carmine	30	5
1 r. d.	" (t 444) blue & brown	50	10

UNPAID LETTER STAMPS.



1 o.	1874, black	2	
3 o.	" pink	5	5
5 o.	" brown	10	5
6 o.	" orange	10	5
12 o.	" red	15	5
20 o.	" blue	20	
24 o.	" lilac	20	10
30 o.	" green	25	10
50 o.	" light brown	50	10
1 k.	" blue & "	75	20

OFFICIAL STAMPS.

Arms in Centre, Oblong.

3 o.	1874, brown	3	
5 o.	" pale green	5	
6 o.	" lilac	5	
12 o.	" blue	10	5
20 o.	" vermilion	15	10
24 o.	" orange	20	5
30 o.	" dark brown	25	5
50 o.	" pink	50	10
1 k.	" blue & brown	75	20

ENVELOPE STAMPS.



12 o.	blue	10
-------	------	----

FOR STOCKHOLM.

1855, (t 442)	black	15
1866,	brown	15



SWITZERLAND, E.

100 RAFFEN OR CENTIMES = 1 FRANG.

CANTONAL ADMINISTRATION.

Geneva.

Eagle and Key.

New Used

5 c.	1844, (t 446) gr'n		
5 c.	" "		
5 c.	" "	5	00
10 c.	" "		

ENVELOPE STAMP.

5 c.	1844, green		
------	-------------	--	--

Basle.

2 1/2 r.	1844, (t 447) green and red	1	50
----------	-----------------------------	---	----

Vaud.

4 c.	1844, (t 448) black and red		
5 c.	" " " "		

Neufchatel.

5 c.	1844, (t 449) black and red		
------	-----------------------------	--	--

Zurich.

Numeral of Value.

4 r.	1843, (t 450) black		
6 r.	" "		
4 r.	" "		
6 r.	" "		
2 1/2 r.	1849, (t 451) " & red		

FEDERAL ADMINISTRATION.

White Cross on Shield.

2 1/2 r.	1850, (orts post) red & black	10	
2 1/2 r.	" (poste locale) red & black	30	
5 r.	" (Rayon I.) red & blue	15	
10 r.	" (Rayon II.) yellow	5	
5 r.	1852, (Rayon I.) blue	5	
15 r.	" small figure, (R. III.) red	15	
15 r.	" large figure (R. III.) red	5	
15 c.	" large figure, (R. III.) red		

Figure of Liberty, Seated.

2 r.	1860, grey	15	
5 r.	1854, brown	3	
10 r.	" blue	3	
15 r.	" rose	3	
20 r.	" orange	3	
40 r.	" green	2	
1 f.	" grey	3	

Value in Corners, Helvetia Above.

		New	Used
2 c.	1862, grey	3	1
3 c.	" black	5	5
5 c.	" brown	5	1
10 c.	" blue	10	2
20 c.	" yellow	15	1
30 c.	" red	25	5
40 c.	" green	30	3
60 c.	" bronze	35	5
1 f.	" gilt	50	3
10 c.	1867, rose	10	2
25 c.	1868, green	25	3
30 c.	1867, blue	25	3
50 c.	" violet	35	3
2 c.	1874, brown	3	
15 c.	" yellow	15	

ENVELOPE STAMPS.



5 c.	1867, brown	5	5
10 c.	" rose	15	3
25 c.	1868, green	15	5
30 c.	" blue	20	5

NEWSPAPER BANDS.

2 c.	1871, (t 452) rose	5
5 c.	" "	



2 c.	1873, rose	5
5 c.	" "	10
2 c.	1874, brown	5
5 c.	" "	5

TASMANIA, O.

12 PENCE = 1 SHILLING.

Small Head, Victoria.

1 p.	1853, (t 453) blue		
4 p.	" (t 454) orange		15



1 p.	1858, red	8	5
2 p.	" green	5	5
4 p.	" blue	5	5

PROVISIONAL GOVERNMENT.

1/2 t.	1860,	blue	
1/2 t.	"	(t 457) "	
<i>Head, Victor Emmanuel.</i>			
New Used			
1/2 t.	1861,	green	10
1/2 g.	"	orange	10 10
1 g.	"	black	10 5
2 1/2 g.	"	blue	10 10
5 g.	"	rose	10 5
5 g.	"	lilac	
10 g.	"	orange	10
20 g.	"	yellow	10 10
50 g.	"	grey	10

Sicily.

Portrait Ferdinand II.

1/2 g.	1859,	orange	20
1 g.	"	olive green	15 20
2 g.	"	blue	15 10
5 g.	"	red	15 15
10 g.	"	dark blue	15 15
20 g.	"	dark violet	15 20
50 g.	"	crimson	20



UNITED STATES OF COLOMBIA, S. A.

100 CENTAVOS = 1 PESO.



5 c.	1859,	brown
5 c.	"	lilac
10 c.	"	yellow
20 c.	"	blue



2 1/2 c.	1860,	green	50
5 c.	"	violet	1 00
5 c.	"	blue	50
10 c.	"	brown	1 00
10 c.	"	vermillion	1 00
20 c.	"	blue	50
1 p.	"	vermillion	



2 1/2 c.	1861,	black
5 c.	"	yellow
5 c.	"	buff
10 c.	"	blue
20 c.	"	red
1 p.	"	rose



10 c.	1862,	blue	
20 c.	"	rose	
50 c.	"	green	
1 p.	"	lilac	

New Used



5 c.	1863,	yellow
10 c.	"	blue
20 c.	"	red
50 c.	"	green



5 c.	1864,	orange	
10 c.	"	blue	50
20 c.	"	rose	
50 c.	"	green	
1 p.	"	violet	



1 c.	1865,	(t 458) rose	5
5 c.	"	orange	15
10 c.	"	violet	15
20 c.	"	blue	20
50 c.	"	green	75
1 p.	"	vermillion	1 50 1 00
2 1/2 c.	"	Tria. lilac	10

Various Designs.

5 c.	1867,	(t 459) yel'w	
10 c.	"	(t 460) lilac	15
20 c.	"	(t 461) blue	15
50 c.	"	(t 462) green	50
1 p.	"	(t 463) rose	
5 p.	"	(t 464) green	
10 p.	"	(t 464) verm'n	
5 c.	1869,	(t 465) yel'w	15
10 c.	"	(t 466) lilac	25 5
20 c.	1870,	(t 467) blue	15
50 c.	"	(t 468) green	35
1 p.	"	(t 469) rose	
1 c.	1872,	(t 470) green	5
1 c.	1873,	" pink	5
2 c.	1871,	(t 471) b'wn	10
2 1/2 c.	1869,	(t 472) bl'k	
		on violet	10
5 c.	1870,	(t 473) yel'w	20 10
10 c.	1874,	(t 474) violet	25 5
5 p.	1870,	(t 475) bl'k	
		on green	
10 p.	"	(t 476) black	
		on vermillion	

REGISTRATION STAMPS.

5 c.	1865,	(t 477) bl'k	
5 c.	1870,	(t 478) "	25
5 c.	1865,	(t 479) "	
5 c.	1870,	(t 480) "	

ADDITIONAL POSTAGE STAMPS.

<i>Various Designs.</i>			
25 c.	1866,	(t 481) blue	25
50 c.	"	(t 482) yellow	
1 p.	"	(t 483) blue	
25 c.	1870,	(t 484) "	



Antioquia.



Similar to Cut.

2 1/2 c.	1868,	(t 485) blue
10 c.	"	(t 486) lilac
5 c.	"	(t 487) green
1 p.	"	(t 488) red
2 1/2 c.	1869,	(t 489) blue
5 c.	"	(t 490) green
10 c.	"	(t 491) lilac
20 c.	"	(t 492) b'wn
1 p.	"	(t 493) carmine

Various Designs

1 c.	1874,	(t 494) light green
5 c.	"	(t 495) "
10 c.	"	(t 496) lilac
20 c.	"	(t 497) brown
50 c.	"	(t 498) blue
1 p.	"	(t 499) red
2 p.	"	(t 500) black on yellow
5 p.	"	(t 501) black on red

Bolivar.



10 c.	1863,	rose
10 c.	"	green
1 p.	"	rose



Various Designs Similar to Cut.

5 c.	1873,	(t 502) blue
10 c.	"	(t 503) violet
20 c.	"	(t 504) yellow green
80 c.	"	(t 505) verm'n
5 c.	1874,	(t 506) blue

Cundinamarca.



Various Designs Similar to Cut. New Used 25

- 5 c. 1870, (t. 507) blue
- 10 c. " (t. 508) red
- 50 c. 1873, (t. 509) green
- 1 p. " (t. 510) red

Tolima.

- 5 c. 1870, (t. 511) bl'k



Various Designs Similar to Cut.

- 5 c. 1871, (t. 512) b'wn 25
- 10 c. " (t. 513) blue
- 50 c. " (t. 514) green
- 1 p. " (t. 515) red
- 15 c. 1873, (t. 516) bl'k
- 20 c. " (t. 517) blue



URUCUAY, S. A.

100 CENTAVOS = 1 REAL,
100 CENTAVOS = 1 PESO.



- 60 c. 1856, blue
- 80 c. " green
- 1 r. " red 30



Value Repeated.

- 120 c. 1856, blue
- 180 c. " green
- 240 c. " red 30

Thin Figures.

New Used

- 60 c. 1859, lilac
- 80 c. " orange
- 100 c. " carmine
- 120 c. " blue
- 180 c. " green
- 240 c. " red

Thicker Figures.

- 60 c. 1859, violet 15
- 80 c. " orange 25
- 100 c. " carmine
- 120 c. " blue
- 180 c. " green



- 06 c. 1864, rose 25
- 08 c. " green 25
- 10 c. " ochre 25
- 12 c. " blue 25

Same, Surcharged.

- 5 c. 1865, blue
- 10 c. " green
- 15 c. " bistre
- 20 c. " rose

Large Numeral of Value.

- 1 c. 1866, black 5
- 5 c. " blue 10
- 10 c. " green 10
- 15 c. " orange 15
- 20 c. " rose 15

ENVELOPE STAMPS.

Arms in Oval.

- 5 c. 1866, blue 20
- 10 c. " green 35
- 5 c. " blue
- 10 c. " green



VANCOUVER'S ISLAND.

See British Columbia.

VAN DIEMAN'S LAND.

See Tasmania.



VENEZUELA, S. A.

100 CENTAVOS = 8 REALS = 1 PESO.



- 1/2 r. 1859, orange 10
- 1 r. " blue 25 10
- 2 r. " red 35 20

Arms.

- 1/4 c. 1861, green
- 1/2 c. " brown
- 1 c. " "



New Used

- 1/2 c. 1863, red
- 1 c. " slate
- 1/2 r. " orange 15
- 1 r. " blue 25
- 2 r. " green 50

Arms in Octagon.

- 1/2 c. 1867, green
- 1 c. " blue green 10
- 1/2 r. " violet 10
- 1 r. " red 10
- 2 r. " yellow 10

Same, Surcharged with Two Lines of Small Type.

- 1 c. 1874, lilac
- 2 c. " green 10
- 1/2 r. " rose 10
- 1 r. " red 10
- 2 r. " yellow 10

La Guaira and St. Thomas.

Steamship and Value.

- 1/2 r. 1864, rose 10
- 2 r. " green 10
- 1/2 r. 1865, blue 10
- 2 r. " yellow 10
- 1/2 r. 1869, (t. 518) green
- 2 r. " " rose



VICTORIA, O.

12 PENCE = 1 SHILLING.



- 1 p. 1852, red 25
- 2 p. " ash 25
- 3 p. " blue 10



Similar to Cut.

- 1 p. 1856, green 75
- 2 p. 1852, brown 10
- 6 p. 1861, blue 10



- New Used**
- 1 s. 1854, (reg.) pink and blue
 - 6 p. " orange 20
 - 2 s. 1858, green 10
 - 6 p. 1855, (too late) lilac and green
 - 6 p. 1862, black 10
 - 2 s. 1864, blue on gr'n 5
- Profile in Circle Octagonal.*
- 1 s. 1854, blue 10
 - 1 s. 1865, blue on blue 5



- 1 p. 1859, green 5
- 2 p. 1860, violet 10
- 4 p. 1859, red 10
- 1 p. 1862, (no em) gr'n 5



- 3 p. 1861, blue 25
- 4 p. 1863, rose 5
- 6 p. 1862, black 10
- 6 p. " orange
- 3 p. 1866, claret

Head in Circle.

- 1 p. 1864, green 2
- 2 p. " violet 2
- 4 p. 1863, rose 2
- 8 p. 1865, orange 20
- 1/2 p. 1873, green 5 2

Profile in Oval, Various Frames.

- 6 p. 1862, (t519) black 5
- 6 p. "va. " " 5
- 3 p. 1866, (t520) lilac 10
- 6 p. 1865, (t521) blue 3
- 10 p. " " slate 30
- 10 p. 1866, " brown 10
- 3 p. 1869, (t519) or'ge 5
- 2 p. 1870, (t522) violet 15 3
- 9 p. 1873, (t521) b'wn 50 10
- 2 p. " (t523) violet 2
- 1/2 p. 1874, (t524) rose 2

Profile in Circle.

- 5 s. 1868, (t525) blue on yellow
- 5 s. " (t525) red and blue 25
- 9p. 1873, (t526) brown 10

ENVELOPE STAMPS.

Head in Oval.

- 2 p. 1870, (t527) pl'k 15
- NEWSPAPER BANDS.**
- 1 p. 1869, (t528) gr'n 5

VIRGIN ISLANDS, W. I. I.

12 PENCE = 1 SHILLING.



- New Used**
- Similar to Cut.*
- 1 p. 1866, green 6
 - 4 p. 1867, rose 25
 - 6 p. 1866, rose 40
 - 1 s. 1867, red & bl'k 75
 - 1 s. " " " 75



WESTERN AUSTRALIA.

12 PENCE = 1 SHILLING.

Swan in Centre.

- 2 p. 1857, bl'k on red
- 4 p. " blue 50
- 6 p. 1856, bronze 1 50
- 1 s. 1857, (t529) pale brown 50



- 1 p. 1860, black 15
- 2 p. " red 15
- 4 p. " blue 60
- 6 p. " green 5
- 1 p. 1862, red 5
- 2 p. " blue
- 4 p. " vermilion
- 6 p. " violet brown
- 1 s. " light green
- 1 p. 1865, straw 3
- 2 p. " yellow 3
- 4 p. " rose 5
- 6 p. " violet 6
- 1 s. " dark green 15
- 3 p. 1872, (t530) b'wn 15



WURTEMBERG, E.

60 KREUZERS = 1 GULDEN.



- 1 k. 1851, buff 12
- 3 k. " yellow 5
- 6 k. " green 3
- 9 k. " pink 3
- 18 k. " violet 15



- New Used**
- 1 k. 1857, brown 5
 - 3 k. " yellow 3
 - 6 k. " green 3
 - 9 k. " rose 5
 - 18 k. " blue 16
 - 1 k. 1862, green 2
 - 3 k. " rose 2
 - 6 k. " blue 5
 - 9 k. " brown 4
 - 18 k. " orange 5
 - 7 k. 1869, blue 5
 - 70 k. 1873, claret 5



- 1 k. 1869, green 3
- 3 k. " rose 6
- 7 k. " blue 15
- 14 k. " orange 30
- 2 k. 1873, " 5
- 9 k. " brown 20

Numeral in Centre, Arms at Sides.

- 20 p. 1874, blue 3

RETURNED LETTER STAMPS.

- 1866, (t531) black 15

ENVELOPE STAMPS.

Numeral in Oval, Octagonal.

- 1 k. 1865, green 4
- 3 k. 1863, rose 5
- 6 k. " blue 10
- 9 k. " brown 10

MONEY ORDER ENVELOPES.

Same on Yellow Paper.

- 4 k. 1867, yellow
- 6 k. " blue
- 7 k. " green
- 9 k. " brown
- 7 k. 1873, blue
- 14 k. " violet



TO THE TRADE ONLY.—Our whole sale list will be sent to dealers on receipt of a copy of all their lists &c.

Electrotypes of any engraving in this work, 75c. each; post free, 80c. Packets of 12, all different price \$5.00.



J. W. Scott & Co.

Announcements, Philatelic and Numismatic.

The American Journal of Philately, annual subscription \$1.00, Single copies, 10 cts.
" " " Vols. I. to VI. and VIII. \$2 each bound.
" " " Vols. I. & V. 50 cents each, unbound.
" " " Vols. II. & IV., VI. & VIII. \$1 each unbound.

Illustrated Descriptive Price List of Postage Stamps, 30th Edition, 25 cents post free

The Common Sense Postage Stamp Albums, price \$2.00, 2.50, 3.50, 5.00, 6.00, 8.00.
Stamp Albums for Beginners, price 25c., 50c., 75c. and \$1.00.

11th Series of Popular Packets, price 25c. to \$10.00.

Cheap Sets of Stamps. See other page.

Single Stamps, as per Catalogue price.

Electrotypes of Stamp Cuts for Illustrating, price 80c. post free.

The Revenue Stamp Albums, price \$3.00, 5.00, 10.00, 15.00, and 25.00.

The Revenue Stamp Catalogue, 25c. post free.

The Revenue Stamp Packet 25c. to \$1.00.

Single Proprietary Stamps and Foreign Revenues, as per Catalogue price.

The Coats of Arms of the World, the set 50 cents. Ready July 15th.

Merchant Flags of the World, the set 25 cents.

Photographs of Rulers of the World, the set \$1.00.

Photographs of Sheet New Caledonia, 50c.

Monogram Albums, 50c., \$1.25 and \$3.00.

Packets of Monograms, 25c. 50c. and \$1.00.

Autograph Albums, 50 cts., \$1.00, \$2.00 and \$4.00.

Catalogue of American and Foreign Copper Coins, 25c. post free.

Catalogue of American and Foreign Silver Coins, price 25 cents.

Dickenson's Numismatic Manual, price \$10.00.

Ruding's Coinage of Britain, 4 Vols. Over 2000 Illustrations, price \$30.00.

Pinkerton's Coins and Medals, 2 Vols. Illustrated, price \$5.00.

Presidential Medals and Tokens, Satterlee. price \$2.50.

Coin Packets, price 25c., 50c., \$1.00, 2.00, 5.00 & 10.00.

Single American and Foreign Coins, as per Catalogue price.

Coin Cabinets, \$5.00, 6.00 and 10.00.

Electrotypes of Coin Cuts, for Illustrating, \$1.00 and 2.00 each.

For detailed description of any of the above, see other pages.

Address,

J. W. SCOTT & CO.,

75 & 77 Nassau Street, New York City.

\$10000 CHALLENGE!

The Handsomest Stamp Catalogue ever Published!!

THIRTIETH (30th) EDITION

OF

J. W. SCOTT & CO.'S

POSTAGE STAMP CATALOGUE,

The Thirtieth Edition of this Standard Descriptive Catalogue of all Postage Stamps is now ready, and will be found to excel all that have gone before it in the number of illustrations, the amount of information given, the clearness of printing, fineness of paper, and general artistic get up, it has been brought up to the very latest minute of going to press, and contains all the new issues, amongst which may be named—

GUATEMALA, HELIGOLAND, FIJI ISLANDS, JAPAN, &c. &c.

The prices have been much reduced, and placed at the very lowest figure at which it is possible to supply genuine original stamps.

Printed on fine paper, and illustrated with the types of every series,

PRICE 25 CENTS.

With supplement, containing cuts of the types of every stamp (with a few exceptions,) price 50 cents.

Last edition, price 10 cents each.

The prices in this Catalogue cancel all in former editions.

NEW EDITION!

THE REVENUE STAMP CATALOGUE.

We are pleased to announce to Collectors, that a new edition of our Revenue Stamp Catalogue is now ready and can be obtained of all respectable booksellers and Stamp Dealers throughout the world.

This valuable aid to the study of fiscal stamps accurately describes over two thousand American and Foreign Revenue Stamps, many of which have never been noted before. It is the only work on the subject ever printed in the English language.

The feature of this edition is a complete list of Beer stamps, priced at current market rates.

Large Octavo 24 pages, and wrapper containing revenue advertisements, price post free, 25c.

Wholesale \$1.75 per dozen, \$7.00 per half hundred, \$12.00 per hundred.

COIN CATALOGUES.

AMERICAN & FOREIGN COPPER COINS.

This catalogue gives the selling price of the various series of coins of which it treats, the text being profusely illustrated with engravings of the rarer pieces, to enable the collector to determine its use and date of issue. The value of the American coins is given in three degrees of preservation, which will be found a valuable feature of the work.

It will be found of great value to all NEWSDEALERS and STOREKEEPERS, as it gives the fictitious value of all American copper. By its means many small traders have made hundreds of dollars by selling coins taken in their stores, which they would otherwise have passed out in change. Price 25 cents, post free.

AMERICAN & FOREIGN SILVER COIN.

This handy manual is gotten up in the same style as the Copper coin catalogue, and is illustrated with well-executed engravings of every American silver coin ever issued, and some of the most interesting foreign ones.

Our remarks concerning the value of the Copper coin catalogue, will apply with still greater force to this, for as the silver coin which has been hoarded up for the last fifteen years comes again into circulation, many rare and valuable pieces are sure to reward those who take the time to look at the dates before paying them away. It must not be thought that it is only the old pieces that are valuable, as, for instance, the publisher will pay \$5 00 for the silver dollar of 1854, and so with other comparatively recent dates.

Price 25 cents, post free. Or the two bound in one volume, with a supplement containing fac-similes of a number of old Roman and Greek coins. Price 50 cents, post free.

THE COMMON SENSE POSTAGE STAMP ALBUM.

—:0:—

It has received the Highest Prize wherever exhibited, and was awarded the only Diploma for Stamp Albums at the American Institute.

It has specially designed spaces for the reception of every Postage Stamp ever issued, rather larger than the Stamp itself, thus showing a neat border round each, adding much to the appearance of a set. Each space contains the description of the stamp, it is designed for, thus making it nearly impossible to make mistakes in arranging the collection. It is brought up to the present time, having spaces provided for the Stamps of The Deccan, Fiji Islands, Japan, &c., &c., also, for the new issues of Canada, Ceylon, Luzon, Norway, Prince Edward Island, United States Official, &c., &c.

It is bound in the strongest manner, by the most skilful workmen, with the best materials. The following styles and prices now ready:

HALF CLOTH, beautifully illuminated in black and gold	\$2 00
CLOTH, gilt lettering, back and sides,	2 50
" guards, clasps, &c.,	3 50
" extra thick paper, gilt clasp, printed on one side of the paper only,	5 00
HALF MOROCCO, extra fine, heavy paper, gilt clasp,	6 00
FRENCH MOROCCO, fine heavy paper, gilt edges, two gilt clasps	8 00
HALF MOROCCO, bound very strong, every other page blank, making it "perfectly permanent;" warranted ten years. Price only	10 00
HALF LEVANT MOROCCO, gilt edges, a perfect book,	15 00
FULL LEVANT or RUSSIA, full gilt,	25 00

EXTRACT FROM PREFACE.

"Special care has been taken to leave plenty of room for those governments that are still in existence, so as to accommodate future issues, and blank pages are left at appropriate intervals for the reception of Stamps from any countries that have not at present issued Postage Labels; but should any one desire additional leaves, specially designed pages to correspond with the body of the book are prepared for all new issues as soon as they are received. These are supplied by the publishers at a nominal rate, and can easily be inserted in their proper order by gumming them to the guards bound with the book for that purpose, thus making the Album PERFECTLY PERMANENT, and as good after ten years as one just published."

UNITED STATES.

Official Stamps, Issued 1873.

EXECUTIVE DEPARTMENT.

<i>Similar, to General Issue, Name, Carmine, 1c.</i>	2c.	3c.	6c.	10c.
--	-----	-----	-----	------

DEPARTMENT OF STATE.

<i>Name, Green, 1c.</i>	2c.	3c.	6c.	7c.	10c.	13c.	15c.	24c.
-------------------------	-----	-----	-----	-----	------	------	------	------

<i>Name, Green, 30c.</i>

<i>Profile of Seaward to left, in oval, Black & Green, 2d.</i>	5d.	10d.	20d.
--	-----	------	------

<i>Name, Green, 90c.</i>

Specimen page of Common Sense Album reduced to one-quarter original size.

THE AUTOGRAPH ALBUM.

It has been said and written concerning the collection of autographs; many learned men maintaining that the hand writing is a sure guide to the character of the writer; be this as it may, it is certain that from the earliest authentic records of history to the present day, there has never been lack of diligent searchers after the signatures of eminent men, and no one who has studied the subject, can doubt the historic value of narratives authenticated by the signatures of well-known characters, but it is not for this class of autographs that the present volume is intended, although if desired these can be pasted with good effect on the blank pages; but rather to contain a collection of the signatures of our friends and acquaintances, and thus, perhaps, be the means of preserving the hand-writing of many loved and lost ones, or at least help to pass many a pleasant hour amongst our friends by comparing hand writing and making guesses at character.

Cloth, gilt	\$1 00
Cloth, gilt, superfine paper, violet border,	2 00
Same in French Morocco, gilt edges, &c.,	4 00

THE REVENUE STAMP ALBUM.

—:O:—

This Album is specially designed to contain the Revenue Stamps of the world, great care having been bestowed in its preparation. It contains the only complete list of U. S. Revenue Stamps ever published, and is well calculated to contain in a convenient and elegant form these interesting mementoes of the greatest struggle the world has ever witnessed, and vividly illustrates the darkest pages of our national history. It is made uniform with the Common Sense Postage Stamp Album, and forms an interesting second volume to that work.

EXTRACT FROM PREFACE.

In the present state of knowledge concerning revenue stamps, it is simply impossible to make the book perfect, nor would it be advisable to do so, if the necessary data were at hand, as the supply of these labels is, at present, very limited, which would in that case, make it impossible to fill the Album. Perhaps the greatest charm in collecting revenue stamps consists in the uncertainty and romance connected with it: nearly every amateur having specimens in his album which are totally unknown to his brother collectors, and there being no definite value or degrees of value yet established; but, of course, this state of things is rapidly passing away, and ere many years, or even months have elapsed, collectors will awake to the knowledge that they have some priceless rarities among their revenue stamps, which, perhaps, have only cost them two or three cents.

Taking these facts into consideration, spaces have only been prepared for well-known and obtainable series of foreign revenue stamps; but by the plentiful distribution of blank pages throughout the book, ample room has been secured for all fiscal stamps that may be acquired by the owner. In regard to the emissions of the United States the case is very different, as nearly every American Philatelist is desirous of obtaining a complete set of the fiscal stamps of his own country. Therefore great care has been taken to provide space for every stamp that has ever been issued by our own country, with the exception of beer, spirit, and tobacco stamps, which it has been pronounced illegal to collect, but as large numbers do collect them, sufficient blank pages have been left for their accommodation, and taking into consideration their large size, they can be arranged with equal facility without the aid of lines.

CLOTH, gilt lettering, &c.,	\$3 00
" EXTRA, heavy paper, large number of additional leaves, clasps, &c.,	5 00
HALF MOROCCO, twice the thickness of last,	10 00
" LEVANT, gilt edges, very strong and handsomely bound,	15 00
FULL " or Russia; a magnificent book	25 00

Postage 25 cents on first two; the others are too heavy to be sent by post.

CANADA (Bill Stamps).

FIRST ISSUE.

Profile of Victoria in oval. Blue. 1c.	2c.	2c.	4c.	5c.	6c.
--	-----	-----	-----	-----	-----

7c.	8c.	9c.	Same as last, in octagon Blue, 10c.	20c.	30c.	40c.	50c.
-----	-----	-----	-------------------------------------	------	------	------	------

Same as last, in oval, Blue, 1d.	2d.	3d.
----------------------------------	-----	-----

Specimen page of Revenue Stamp Album reduced to one-quarter original size.

THE MONOGRAM ALBUM.

—:O:—

THE BEST AND ONLY CHEAP ALBUM FOR MONOGRAMS.

This series is beautifully printed on heavy tinted paper, with a very elaborate design surrounding the page.

No. 1 to contain 100, bound in Imitation Morocco, with gilt design on cover; very neat; only	50c.
No. 2 to contain 250, very strong and handsomely bound in the best English Cloth. Price,	\$1 25
No. 3 to contain 500; magnificently bound in French Morocco; gilt design on cover and gilt edges. Price only	3 00

—:O:—

THE MERCHANT FLAGS OF THE WORLD



AUSTRIAN-ITALY.



BRAZIL.



FINLAND.

Uncolored fac-similes, showing size and style.

These brilliant colored Flags faithfully represent the emblems of the different nations of the earth, and as such are a great acquisition to any Album, while the exceedingly low price (25 cents) at which they are published, places them within the reach of all."

"This Chart, containing many Flags never before published, has been collected with great care, and can be relied upon as being strictly accurate, and by its aid the nationality of any ship may be easily determined, as it gives the Flag of the NATION instead of the gorgeous piece of bunting which simply belongs to one family, and is seldom, if ever, seen out of their country."

"These sheets possess three great advantages (to the Collector) over any others we are acquainted with, which consist in the facts that there is only one Flag to each country; more nations represented than have heretofore been given; and only Flags of those countries which issue postage stamps. These we consider of great importance to those who buy them to put in albums, as they can use them all instead of having to throw away half the purchase. The colors are very brilliant, and without correct, and being printed on very thin paper, the book is not swelled to an inordinate thickness."

Beautifully and correctly printed in five colors on fine heavy paper for framing, or thin paper for albums. Price only 25 cents.

In ordering please state which paper is required.

— 0 —

Ready July 15.

THE COATS OF ARMS OF THE WORLD.



(RUSSIA.)

Uncolored fac simile showing size.

This magnificent chart contains accurate representations of the armorial bearings of the nations of the world, all of which are beautifully and correctly emblazoned in gold and silver, and their true colors.

As a sheet for framing, it is an acquisition to any drawing room, and is indispensable in the library or study.

As a guide to determine the nationality of foreign coins or postage stamps, (most of which bear the issuing countries' arms), it will be found of great service. While cut up and inserted in stamp albums, they will be found to add much to the appearance of the page.

Printed on fine heavy paper for framing, or on the same quality of thin paper for inserting in albums. Price, 50c.

POSTAGE STAMP PORTRAITS OF RULERS

FOR INSERTION IN

ALL POSTAGE STAMP ALBUMS.

These Photographs are the size of Postage Stamps, and when inserted in the spaces prepared for them, add considerable to the interest of an album.

SET OF 48 PORTRAITS Price \$1.00.

List of subjects, the numbers affixed correspond to the spaces in Scott's American & Common Sense Albums

- | | | |
|---------------------------------------|--|---------------------------------------|
| 43. United States.—G. Washington | 39. Italy..Victor Emanuel II. | 38. Russia..Alexander II. |
| 44. " " A. Lincoln. | 32. Mecklenburg Schwerin..Frederick Francis. | 29. Sandwich Islands..Kamehameha III. |
| 45. " " U. S. Grant. | 34. Mecklenburg Strelitz..Frederick William | 36. Sandwich Islands..Kamehameha IV. |
| 27. Austria—Francis Joseph I. | 7. Mexico..Maximilian I. | 22. Sandwich Islands..Kamehameha V. |
| 10. Baden—Frederick. | 20. Modena..Francis V. | 9. Saxony..Frederick Augustus |
| 28. Bavaria—Maximilian. | 41. Naples..Ferdinand II. | 33. " John |
| 6. Louis II. | 4. Norway..Charles XV. | 41. Sicily..Ferdinand II. |
| 21. Belgium—Leopold I. | 18. Oldenburg..Peter. | 11. Spain..Isabella II. |
| 24. Brazil—Dom Pedro II. | 31. Parma..Robert I. | 42. Sweden..Charles XV. |
| 5. Brunswick—William. | 17. Portugal..Maria II. | 25. Turkey..Abdul Aziz Khan |
| 47. Confederation States—Jeff. Davis. | 40. " Pedro V. | 18. Tuscany..Ferdinand IV. |
| 3. Denmark—Frederick VII. | 30. " Louis I. | 8. Wurtemberg..William I. |
| 37. " Christian IX. | 34. Prussia..William I. | 15. " Charles I. |
| 2. France—Napoleon III. | 23. " Frederick William IV. | The Author. |
| 46. Great Britain—Victoria | 35. Roman States..Pius IX. | |
| 14. Greece—George I. | 12. Roumania..Couza. | |
| 19. Hanover—George V. | | |
| 16. Holland..William III. | | |

CHEAP SETS OF STAMPS.

Those marked * are unused, all the others are used.

	VARIETIES.	PRICE		VARIETIES.	PRICE.
Argentine Republic, 1867,	3	35	Portugal, 1862,	5	85
Austria, 1850,	5	15	“ 1866,	8	35
“ 1863,	5	10	“ 1871,	7	25
“ 1867,	7	35	*Portuguese Indies,	3	65
“ 1850-67	25	50	*Prussia, 1850,	5	50
Baden, 1851-68,	10	25	* “ 1861,	6	25
Bavaria, 1849-68,	10	25	* “ 1867,	5	25
Belgium, 1849-69,	15	25	* “ Env. 1851,	7	2 50
*Bergedorf,	5	25	* “ “ 1861:	3	50
Brazil, 1866,	7	25	“ 1850-67,	20	50
* “ “	7	1 00	Queensland,	6	35
British Guiana, 1860-3	6	25	*Romagna, 1859,	9	75
British Honduras,	3	25	*Roman States, 1867,	7	35
Canada, 1851-71,	18	35	*Roumania, 1865,	3	35
* “ 1870-71,	4	20	* “ “ 1866,	3	30
*Cashmere, 1866,	6	3 00	“ “	15	65
Ceylon, 1872,	6	25	Russia,	6	25
*Confederate States, 1861 3,	11	5 00	Salvador.	4	50
* “ “ 1863,	5	25	*Sandwich Islands, 1864-71	5	1 00
Costa Rica,	4	75	Saxony, 1851-63,	14	30
Denmark, 1851-71,	15	40	* “ 1863,	6	10
Dutch Indies, 1870-4,	5	30	*Shanghai, 1865	6	1 25
* “ “ 1874,	4	75	*Sicily, 1859.	7	75
Ecuador, 1865-73,	4	40	South Australia,	5	20
France, 1849-74,	48	1 50	Spain, 1852-74	50	2 00
“ 1854-69,	15	25	* “ Second, 1874 issue,	8	2 00
“ 1872,	10	10	“ 1870,	10	30
Germany—Southern States,	12	40	“ First, 1874 issue.	8	50
* “ Northern and Southern,	14	1 00	* “ Official, 1854,	4	25
1859-62,	14	1 00	* “ “ 1854,	4	25
German Empire, 1871,	13	25	Spanish West Indies, one of each		
“ “ 1872-4,	15	35	“ “ issue,	12	60
Great Britain,	28	50	* “ “ 1857,	3	1 00
*Hamburgh,	10	50	“ “ 1870,	4	75
“ “	10	25	“ “ 1871,	4	25
* “ Locals,	11	50	* “ “ 1873,	4	1 25
*Heligoland, 1875,	6	75	* “ “ 1874,	4	1 25
*Holstein, Schleswig and Schleswig			* “ “ 1875,	4	1 25
Holstein,	14	1 00	St. Settlements, 1868-72,	9	50
Holland, 1852-72	20	50	Sweden, 1872,	9	25
Hungary,	10	50	“ 1858,	7	15
Honduras,	2	40	Switzerland, 1854-74,	20	40
India, 1860-66,	6	10	* “ Envelope,	4	50
*Italy, 1856.	10	50	“ “	4	15
“ 1863,	7	10	Tasmania, 1858,	5	35
“ 1870,	10	50	*Turks Island,	3	1 00
*Lubeck, 1859,	5	25	*Turkey,	5	50
Luxemburg,	7	25	“ “	5	25
*Mecklenburg Strelitz	6	35	*United States, 1851,	8	1 25
*Mexico, 1867,	4	5 00	* “ “ 1861,	10	4 00
* “ 1864,	5	1 00	“ “ 1871,	11	20
* “ 1866,	4	1 50	“ “ Official, Interior,	11	65
“ 1872,	5	35	“ “ Justice,	9	1 00
“ 1874,	4	50	“ “ Navy,	9	75
* “ “ Env.	2	1 00	“ “ Post Office	9	50
*Modena, 1859,	5	50	“ “ State,	8	1 00
*New Caledonia, Photographs.	50	50	“ “ Treasury,	11	25
*New Foundland, 1857-60,	11	2 50	“ “ War,	7	35
* “ “ 1866-74,	10	2 50	“ “ Env.	5	25
* “ “ “	4	50	* “ “Newsp'r Stamps, 1863,	3	1 00
New Granada, 1869-74,	8	75	* “ “ Envelope “ 1865,	6	1 00
New South Wales, 1852-72	10	50	* “ “ “ 1870,	18	1 00
New Zealand,	10	40	“ “ Revenue 1st issue,		
* “ 1873,	6	1 00	“ “ “ 1c. to \$1.00	17	25
*Nicaragua,	4	1 00	“ “ “ 2d issue,		
North German Confed.	13	25	“ “ “ 1c. to \$1.00	27	35
Norway,	10	35	*Venezuela, 1859,	3	50
Peru, 1858-59,	4	1 50	Victoria, 1852-74,	20	1 00
“ 1866-67,	3	25	Western Australia, 1865,	5	30
			Wurtemberg, 1851-73,	17	50

American Journal of Philately.

VERY IMPORTANT NOTICE.

A PRESENT WITH EVERY NUMBER. ONE DOLLAR PER YEAR.

DELIVERED POST FREE TO ANY ADDRESS.

THREE COPIES FOR TWO DOLLARS.

J. W. SCOTT & CO., are pleased to announce to the readers of the AMERICAN JOURNAL OF PHILATELY, that they have made the following arrangements for the year 1875, which they hope will gratify their patrons:

The pages of the Journal will continue the same size as before, but they will be added to from time to time so as to accommodate all the writings of American Philatelists and reprints or translations of every article relating to stamps published anywhere in the world, that is readable or contains any useful information. By this means our subscribers will get delivered free of postage, for ONE DOLLAR PER YEAR; a large number of valuable original articles, and all the contents that are worth reading of *L'Ami des Timbres*, *Le Timbre Post*, *The Philatelist*, *The Stamp Collector's Magazine*, *Illustrirtes Briefmarken Journal*, &c.

Mr. Coster's Standard Articles on American Locals will be shortly completed, and will then be supplied complete for \$1.00.

The very valuable and interesting History of Postage Stamps, by Overy Taylor, will be continued monthly till finished.

The advertising pages will be found interesting to Stamp and Coin Collectors, and the probabilities are that a Coin Supplement will be given away with every number.

A Scarce Stamp, used or unused will be given away with every number.

Send in your subscription at once to

J. W. SCOTT & CO., 75 and 77 Nassau St., New York City.

THE MOST SUITABLE PRESENT FOR ANY ONE COLLECTING STAMPS IS ONE OF SCOTT'S STAMP ALBUMS,


Price 25c., 50c., 75c., \$1.00, \$1.50 \$2.00, \$2.50, \$3.00, \$3.50,
\$5.00, \$10.00. \$15.00. \$25.00, and \$50.00.

J. W. SCOTT & CO., respectfully call the attention of purchasers to their magnificent assortment of Albums, &c., suitable for

BIRTHDAY PRESENTS,

Any of which will be sent by mail on receipt of price, or by Express, C. O. D.

For the convenience of those who may desire to include a selection of Foreign Postage Stamps in their present, we will, by adding the price of the packet, carefully arrange any of our 25c., 50c., \$1.00, \$2.00, \$5.00 or \$10.00 packets, or other stamps in the Album, free of charge.

 All goods carefully packed to ensure their arrival in perfect condition.
"Order early to make sure of getting the book in time."

Revenue Stamp Packets.

NOTE.—These packets are composed entirely of revenue stamps, and every stamp in them is warranted genuine. A three cent stamp must always accompany all orders for return postage.

Packet No.

1	Contains 25 varieties of United States Document Stamps. All of the first issue and some quite scarce,	Price 25c.
2	Contains 20 varieties of United States Document Stamps, all of the two colored series and including a \$2 one.	Price 25c.
3	Contains 15 varieties of United States Match Stamps, including Arnold & Co., Gates, D. M. Richardson, etc.	Price 25c.
4	Contains 15 varieties of United States Medicine Stamps, including L. S. Johnson, R. V. Pierce, etc.	Price 25c.
5	Contains 15 varieties of Canada Revenue Stamps, including some obsolete ones,	Price 25c.
6	Contains 15 varieties of Foreign Revenue Stamps, including Italy, Austria, Great Britain, etc.,	Price 25c.
7	Contains 10 varieties of Foreign Revenue Stamps, including Jamaica, India, etc.,	Price 25c.
8	Contains forty varieties of Mixed United States Revenue Stamps, including some of all issues,	Price 50c.
9	Contains fifty Mixed Revenue Stamps, including many obsolete and rare.	Price 50c.
10	Contains forty varieties of United States Proprietary Stamps, including Match, Medicine, and Playing Card Stamps,	Price 50c.
11	Contains twenty-five varieties of Canada Bill Stamps, including some of each issue,	Price 50c.
12	Contains one hundred Revenue Stamps, including Canada, United States, England, France, etc.,	Price 1.00.
13	Contains fifty Revenue Stamps, including Italy, Germany, Spain, etc.,	Price 1.00.
14	Contains twenty-five rare Revenue Stamps, including Peru, Uruguay, etc.,	Price 1.00.
15	Contains twenty-five rare United States Proprietary Stamps, including Radcliff, Griggs & Scott, Aetna Match Co., etc.	Price 1.00.
16	Contains twenty rare Canada Revenue Stamps, including Quebec and other Law Stamps,	Price 1.00.

DEALERS' PACKETS.

NOTE.—These packets are only suitable for dealers, as they contain duplicates.

Packet

A. 1.	100 First issue Revenues,	\$ 50c.
B. 2.	250 " " " "	1.00
C. 3.	500 " " " "	1.75
D. 4.	1000 " " " "	3.00
F. 5.	100 Second and Third issues United States Revenues,	75c.
F. 6.	250 " " " "	1.75
G. 7.	500 " " " "	3.00
H. 8.	1000 " " " "	5.50
I. 9.	100 Canada Bill Stamps,	75c.
J. 10.	100 " Law Stamps	10.00

WANTED TO PURCHASE,

For which the very highest prices will be paid, FOREIGN REVENUE STAMPS of all kinds, U. S. PROPRIETARY STAMPS, SOUTH AMERICAN STAMPS; also, the following U. S. DEPARTMENT STAMPS:

AGRICULTURE, EXECUTIVE, JUSTICE and STATE.

Any stamps of the 1847 or 1869 issue, and 24, 30 and 90c. stamps of any issue, U. S. 25 cents per 100 will be paid for any MATCH MEDICINE or PLAYING CARD STAMPS. 25 cents each will be paid for CLEAN COPIES of the AUGUST, 1873, JOURNAL. From one to ten dollars paid for U. S. and CONFEDERATE STATES LOCALS, on the original letters.

Collections and small lots of Stamps purchased on favorable terms.

Address

J. W. SCOTT & CO.,

75 & 77 NASSAU STREET, NEW YORK CITY.

40TH EXHIBITION



American Institute

OF THE CITY OF NEW YORK

REPORT OF JUDGES

Upon

Postage Stamp Albums

Exhibited by

J. W. Scott

Excellent

Edw. W. Whelan
 Asst. Sec. Secretary

Saml. W. Hillman
 Cor. Secretary



W. B. Ayler
 President

Reduced fac simile of Diploma granted to J. W. Scott & Co., by the American Institute, for manufacturing the best Postage Stamp Albums

THE
POSTAGE

25



25

STAMP CATALOGUE

PROFUSELY
ILLUSTRATED.

ENTERED ACCORDING TO ACT OF CONGRESS IN THE
YEAR 1875, BY J. W. SCOTT & CO. IN THE OFFICE
OF THE LIBRARIAN OF CONGRESS AT WASHINGTON

Branford 529(5)

Recd Dec 76

THE
POSTAGE STAMP

CATALOGUE,

GIVING THE DATE OF ISSUE, COLOR, SHAPE AND VALUE OF EVERY POSTAGE STAMP
THAT HAS EVER BEEN ISSUED BY ANY GOVERNMENT IN THE WORLD.

PROFUSELY ILLUSTRATED

WITH THE TYPE OF NEARLY EVERY STAMP, AND GIVING THE PRICES AT WHICH MOST
OF THEM CAN BE PURCHASED CLEAN OR CANCELED OF

J. W. SCOTT & CO.



Thirty-Third Edition.

THOROUGHLY REVISED AND CORRECTED AND FULLY BROUGHT UP TO THE DAY OF
GOING TO PRESS.

PRICE 25 CENTS,

OR WITH SUPPLEMENT OF ILLUSTRATIONS 50 CENTS.

NEW YORK:

J. W. SCOTT & CO., 146 FULTON STREET.

Crawford 529(6)

ILLUSTRATIONS
OF
POSTAGE STAMPS.
SUPPLEMENT TO
THE POSTAGE STAMP CATALOGUE.

PRICE 25 CENTS.

[1875]

Crawford 529(6)

ILLUSTRATIONS
OF
POSTAGE STAMPS.
SUPPLEMENT TO
THE POSTAGE STAMP CATALOGUE.

PRICE 25 CENTS.

[1875.]

ILLUSTRATIONS OF POSTAGE STAMPS.

Supplement to the Postage Stamp Catalogue.



Type 1



2



3



4



5



6



7



8



9



10



11



12



13



14



15



16



17



18



19



20



21



22



23



24



25



26



27



28



29



30



32



34



#35

#39



31



33



36



37



38



39



40



47



41



42



43



44



45



46



48



49



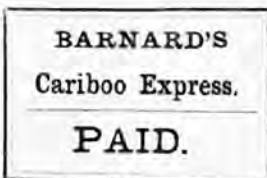
50



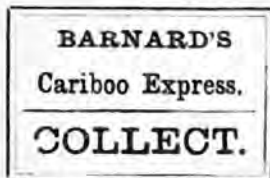
52



58



54



55



56



57



58



60



61



62



63



64



65



66



72



73



74



67



68



69



70



71



75



76



77



78



79



80



81



83



84



85



86



87



88



89



90



91



95



96





98



99



100



101



102



104



105



106



107



108



109



110



111



112



113



114



115



116



117



118



119



120



121



122





128



129



130



131



132



133



134



135



136



137



138



139



140



141



142



152



153



154



155



155a



156



157



158



159



160



161



162



163



164



165



166



168



169



171



172



173



174



175



176



177



178



179



180



181



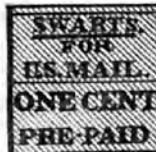
183



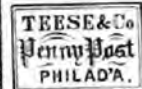
184



185



186



187



188



189



190



191



192



193



194



195



196



202



203



204



205



206



207



208



210



216



220



219



221



222



223



227



228



237



238



239



240



241



242



243



244



245



246



247



248



249



250



251



252



254



255



256



257



258



259



260



261



263



264



266



267



268



269



270



271



272



273





274



276



277



278



279



281



283



285



287



286



288



289



291





302



305



308



309



310



317



311



312



321



323



318



324



333



344



338



340



342



343



344



351





3898



3899



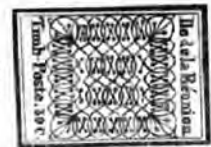
3900



3901



3902



3876



3877



3883



3884



3887





362



363



364



365



366



367



368



369



370



371



372



373



374



375



405



406



407



408



409



411



412



418



419



421



423



424



425



426



427



428



432



433 437*



434



435



436



437



438



440





459



460



461



462



463



464



465



466



467



468



469



470



471



473



474



472



475



476



456



478



480



484



485



486



87



88



89



90



91



492



493



499



508



511



513



514



515



518



522



525



527



528



531

Illustrations of Stamps Omitted from their Proper Places.



1858 Issre.



1865



1857



1851



1859



1857



1874



1857.



1866



1866]



1872



1852-3



1850

