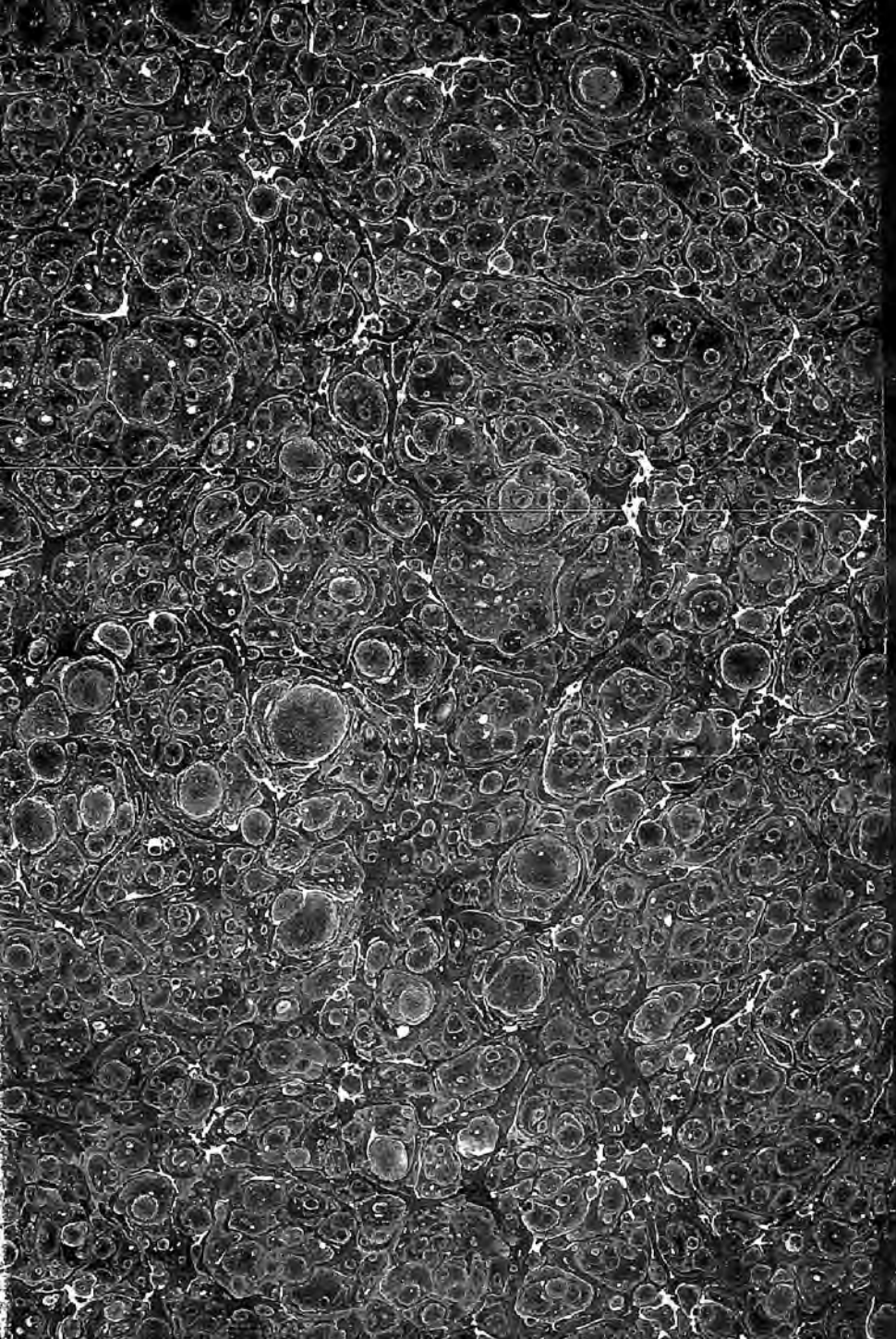




Biblioteka Lundestana

PH. LATINUS





Brawford 492(1-3)



PRICE THREEPENCE.



POSTAGE STAMPS.

J. W. PALMER, in handing his NEW CATALOGUE OF POSTAGE STAMPS, begs to call the attention of his customers to the LOW PRICES APPENDED to each Stamp, and which he is enabled to affix from the very large Stock he has on hand. Of course of the RARE and UNCOMMON STAMPS, though equally moderate, his stock is in some instances very limited, so that immediate orders are solicited.

J. W. P. would further state, that to those who add the collecting of BILL STAMPS to that of POSTAGE STAMPS he has a very large assortment, which he can sell at equally low prices.

1873.



LONDON:

385, STRAND, W. C.



FOR TALK AT THE

MEMORIAL SERVICE

AT THE
MEMORIAL SERVICE
AT THE
MEMORIAL SERVICE

AT THE
MEMORIAL SERVICE
AT THE
MEMORIAL SERVICE

1878.

1878.

PRICED CATALOGUE OF

FOREIGN, ENGLISH & COLONIAL
POSTAGE STAMPS,

ON SALE, AT THE PRICES AFFIXED, FOR READY MONEY, BY

J. W. PALMER,
335, STRAND, LONDON, W.C.

In ordering from this Catalogue a reference to the number affixed to each Stamp will be sufficient. Orders sent by the return post.

All the Stamps are Warranted Genuine.

| | | un-used. | | | | un-used. | |
|--------------------------------------|----|-----------|-------------|---|---|----------|-------|
| | | s. d. | s. d. | | | s. d. | s. d. |
| Alsace and Lorraine. | | | | | | | |
| Adhesive Stamps. | | | | | | | |
| 1870, <i>figure.</i> | | | | | | | |
| 17. | 3 | " | green | | | 0 | 3 |
| 18. | 5 | " | red | | | 0 | 1 |
| 19. | 10 | " | brown | | | 0 | 1 |
| 20. | 15 | " | blue | | | 0 | 1 |
| 1861, <i>embossed head to right.</i> | | | | | | | |
| 21. | 2 | kr. oval | yellow | 0 | 3 | 0 | 1 |
| 22. | 3 | " | green | 0 | 3 | 0 | 1 |
| 23. | 5 | " | red | 0 | 5 | 0 | 1 |
| 24. | 10 | " | brown | | | 0 | 1 |
| 25. | 15 | " | blue | | | 0 | 1 |
| Austria. | | | | | | | |
| ADHESIVE STAMPS. | | | | | | | |
| 1850, <i>eagle on shield.</i> | | | | | | | |
| 8. | 1 | kr. rect. | orange | 0 | 4 | | |
| 9. | 1 | " | yellow | 0 | 2 | | |
| 10. | 2 | " | black | 0 | 2 | | |
| 11. | 3 | " | red | 0 | 1 | | |
| 12. | 6 | " | brown | 0 | 1 | | |
| 13. | 9 | " | blue | 0 | 1 | | |
| 1863, <i>embossed eagle.</i> | | | | | | | |
| 26. | 2 | kr. oval | yellow | 0 | 2 | 0 | 1 |
| 27. | 3 | " | green | 0 | 2 | 0 | 1 |
| 28. | 5 | " | rose | 0 | 3 | 0 | 1 |
| 29. | 10 | " | blue | | | 0 | 1 |
| 30. | 15 | " | brown | | | 0 | 1 |
| 1867, <i>head to right.</i> | | | | | | | |
| 31. | 2 | kr. rect. | yellow | 0 | 2 | 0 | 1 |
| 32. | 3 | " | green | 0 | 2 | 0 | 1 |
| 33. | 5 | " | rose | 0 | 3 | 0 | 1 |
| 34. | 10 | " | blue | 0 | 6 | 0 | 1 |
| 35. | 15 | " | light brown | | | 0 | 1 |
| 1858, <i>embossed head to left.</i> | | | | | | | |
| 14. | 2 | kr. rect. | orange | 0 | 3 | | |
| 15. | 2 | " | yellow | 0 | 2 | | |
| 16. | 3 | " | black | 0 | 3 | | |

| | un- used. | used. | | un- used. | used. |
|---|--------------|-------|--|--------------|-------|
| | s. d. | s. d. | | s. d. | s. d. |
| 36. 25 " violet | | 0 2 | 60. 10 " red-brown | 0 9 | 0 2 |
| 37. 10 " flesh | | 0 5 | 61. 15 " blue | 1 3 | 0 2 |
| FOR FOREIGN POST-OFFICES. | | | 62. 20 " orange | 1 6 | 1 0 |
| 1867, same device as last but inscribed "slt." instead of "kr." | | | 63. 25 " dark brown | 1 9 | 1 0 |
| 38. 2 sol. rect., yellow | 0 2 | 0 1 | 64. 30 " violet | 2 3 | 1 3 |
| 39. 8 " green | 0 3 | 0 3 | 65. 35 " light brown | 2 6 | 1 6 |
| 40. 5 " rose | 0 4 | 0 2 | 1863, embossed eagle. | | |
| 41. 10 " blue | 0 6 | 0 2 | 66. 3 kr. oval green | 0 3 | 0 2 |
| 42. 15 " light brown | | 0 2 | 67. 5 " rose | 0 5 | 0 1 |
| 43. 25 " violet | | 0 4 | 68. 10 " blue | 0 8 | 0 2 |
| 44. 50 " flesh | | | 69. 15 " brown | | 0 2 |
| NEWSPAPER STAMPS. | | | 70. 25 " violet | | 0 4 |
| 1850, head of Mercury. | | | 1867, head to right. | | |
| 45. square blue | 0 4 | 0 2 | 71. 3 kr. rect. green | 0 3 | 0 2 |
| 1858, embossed head to left. | | | 72. 5 " rose | 0 4 | 0 1 |
| 46. rect. blue | 0 5 | 0 3 | 73. 10 " blue | 0 6 | 0 2 |
| 47. " lavender | 0 5 | 0 3 | 74. 15 " light brown | | 0 2 |
| 1861, embossed head to right. | | | 75. 25 " violet | | 0 3 |
| 48. rect. grey | 0 2 | 0 1 | FOR FOREIGN POST-OFFICES. | | |
| 1861, eagle. | | | 1867, same device as last, but inscribed "slt." instead of "kr." | | |
| 49. 1 kr. square blue | 0 1 | 0 1 | 76. 3 sol. rect. green | 0 3 | 0 3 |
| 50. 1 " black | | | 77. 5 " rose | 0 4 | 0 3 |
| 51. 2 " brown | 0 2 | 0 1 | 78. 10 " blue | 0 7 | 0 4 |
| 52. 2 " red | 0 6 | 0 4 | 79. 15 " light brown | | 0 4 |
| 53. 2 " green | | 0 3 | 80. 25 " violet | | 0 8 |
| 54. 4 " brown | | 2 0 | POST CARD. | | |
| 55. 4 " red | | | 1869, head to right. | | |
| 1863, embossed eagle. | | | 81. 2 kr. rect. yellow | 0 4 | 0 2 |
| 56. oct. lavender | 0 1 | 0 1 | DANUBIAN STEAM NAVIGATION COMPANY. | | |
| 1867, head of Mercury. | | | ADHESIVE STAMPS. | | |
| 57. rect. pale lilac | 0 1 | 0 1 | 1866-9, figure of value and anchors. | | |
| ENVELOPE STAMPS. | | | 82. 10 soldi obl. lilac | | |
| 1861, embossed head to right. | | | 83. 10 " green | 0 9 | 0 6 |
| 58. 3 kr. oval green | 0 6 | 0 3 | 84. 17 " rose | | |
| 59. 5 " red | 0 8 | 0 2 | Hungary. | | |
| | | | POST CARD. | | |
| | | | 1870, head to right. | | |
| | | | 85. 2 kr. rect. yellow | 0 5 | 0 3 |

| Austrian Italy. | | un- used. | used. | Baden. | | un- used. | used. |
|-------------------------------|--|--------------|-------|-------------------------------------|-----|--------------|-------|
| | | s. d. | s. d. | ADHESIVE STAMPS. | | s. d. | s. d. |
| ADHESIVE STAMPS. | | | | 1851-57, figure of value. | | | |
| 1850, eagle on shield. | | | | 117. 1 kr. square buff | 2 0 | 0 9 | |
| 86. 5 cent. rect. orange | | | 0 5 | 118. 1 " white | | 0 2 | |
| 87. 10 " black | | | 0 5 | 119. 3 " yellow | | 0 1 | |
| 88. 15 " red | | | 0 1 | 120. 3 " orange yellow | | 0 1 | |
| 89. 30 " brown | | | 0 1 | 121. 3 " green | 1 0 | 0 1 | |
| 90. 45 " blue | | | 0 1 | 122. 3 " blue | 1 6 | 0 1 | |
| 1858, embossed head to left. | | | | 123. 6 " green | 1 6 | 0 1 | |
| 91. 2 sol. rect. yellow | | 0 4 | 0 2 | 124. 6 " yellow | | 0 1 | |
| 92. 3 " black | | 1 0 | 0 4 | 125. 9 " pink | | 0 1 | |
| 93. 5 " scarlet | | 1 0 | 0 2 | 1861-62, arms on blue ground. | | | |
| 94. 10 " brown | | 1 0 | 0 2 | 126. 1 kr. square black | 0 2 | 0 1 | |
| 95. 15 " blue | | 1 0 | 0 2 | 127. 3 " blue | | 0 2 | |
| 1861, embossed head to right. | | | | 128. 6 " orange | | 0 2 | |
| 96. 5 sol. oval red | | 1 3 | 0 2 | 129. 6 " blue | 0 8 | 0 2 | |
| 97. 10 " brown | | | 0 3 | 130. 9 " rose | | 0 2 | |
| 1862, embossed head to left. | | | | 131. 9 " stone | 0 9 | 0 2 | |
| 98. 3 sol. rect. green | | 0 6 | 0 2 | 1862, arms on white ground. | | | |
| 1863, embossed eagle. | | | | 132. 1 kr. square black | 0 1 | 0 1 | |
| 99. 2 sol. oval yellow | | 0 2 | 0 2 | 133. 3 " pink | 0 2 | 0 1 | |
| 100. 3 " green | | 0 3 | 0 2 | 134. 6 " blue | 0 4 | 0 1 | |
| 101. 5 " rose | | 0 4 | 0 1 | 135. 9 " stone | 0 6 | 0 1 | |
| 102. 10 " blue | | 0 6 | 0 1 | 136. 18 " green | | 0 4 | |
| 103. 15 " brown | | 0 8 | 0 2 | 137. 30 " orange | | 0 5 | |
| ENVELOPE STAMPS. | | | | 1868-69, name in thick letters. | | | |
| 1861, embossed head to right. | | | | 138. 1 kr. square green | 0 1 | 0 1 | |
| 104. 3 sol. oval green | | 0 5 | | 139. 3 " rose | 0 2 | 0 1 | |
| 105. 5 " red | | 0 7 | | 140. 7 " blue | 0 4 | 0 | |
| 106. 10 " brown | | 0 9 | | GERMAN LETTERSTAMPS. | | | |
| 107. 15 " blue | | | | 1862, "law-post" & figure of value. | | | |
| 108. 20 " orange | | 1 6 | | 141. 1 kr. square yellow | | 0 2 | |
| 109. 25 " dark brown | | 1 9 | | 142. 3 " low | | 0 3 | |
| 110. 30 " violet | | 2 0 | | 143. 12 " " | | 0 9 | |
| 111. 35 " pale brown | | 2 6 | | ENVELOPE STAMPS. | | | |
| 1863, arms. | | | | 1858, head. | | | |
| 112. 3 sol. oval green | | 0 4 | 0 2 | 144. 3 kr. oval blue | 1 0 | 0 8 | |
| 113. 5 " rose | | 0 5 | 0 2 | 145. 6 " yellow | 1 6 | | |
| 114. 10 " blue | | 0 8 | 0 3 | 146. 9 " rose | 2 0 | | |
| 115. 15 " brown | | 1 0 | 0 3 | | | | |
| 116. 25 " violet | | 1 6 | 0 6 | | | | |

PALMER'S CATALOGUE OF POSTAGE STAMPS.

| | un- used. | used. | | | | |
|---|--------------|-------|-------------------------|----------------|------------|---------|
| | s d. | s. d. | | | | |
| 1862, head. | | | | | | |
| 147. 3 kr. oval rose | 0 2 | 0 1 | 173 | " | Wurtzbourg | 0 6 |
| 148. 6 " blue | 0 4 | 0 2 | 174 | " | Munich | 0 6 |
| 149. 9 " brown | 0 6 | 0 2 | 175 | " | Nurnberg | 0 6 |
| | | | 176 | " | Speyer | 0 6 |
| Bavaria. | | | ENVELOPE STAMP. | | | |
| ADHESIVE STAMPS. | | | 1869, arms. | | | |
| 1849, figure in square. | | | 177 | 3 kr. oval | rose | 0 3 0 1 |
| 150. 1 kr. square black | 2 0 | 0 9 | — | | | |
| 1850, figure in circle. | | | Belgium. | | | |
| 151. 1 kr. square rose | | 0 1 | ADHESIVE STAMPS. | | | |
| 152. 3 " " blue | | 0 1 | 1849, head to right. | | | |
| 153. 6 " " marone | | 0 1 | 178 | 10 c. rect. | brown | 0 4 |
| 154. 9 " " green | | 0 1 | 179 | 20 " " blue | | 0 3 |
| 155. 12 " " red | | 0 5 | 1850, type as last. | | | |
| 156. 18 " " yellow | | 0 4 | 180 | 1 c. rect. | green | 0 1 0 1 |
| 1862, type as last. | | | 181 | 10 " " brown | | 0 2 0 1 |
| 157. 1 kr. square yel- low | 0 1 | 0 1 | 182 | 20 " " blue | | 0 1 |
| 158. 3 " " rose | 0 3 | 0 1 | 183 | 40 " " red | | 0 1 |
| 159. 6 " " blue | 0 5 | 0 1 | 1866, arms. | | | |
| 160. 9 " " stone | 0 7 | 0 1 | 184 | 1 c. rect. | grey | 0 1 0 1 |
| 161. 12 " " green | 0 9 | 0 3 | 185 | 2 " " blue | | 0 1 0 1 |
| 162. 18 " " red | | 0 3 | 186 | 5 " " brown | | 0 1 0 1 |
| 1867-69, arms. | | | 1865, head to left. | | | |
| 163. 1 kr. rect. green | 0 1 | 0 1 | 187 | 10 c. " grey | | 0 2 0 1 |
| 164. 3 " " rose | 0 2 | 0 1 | 188 | 20 " " blue | | 0 4 0 1 |
| 165. 6 " " blue | 0 4 | 0 1 | 189 | 30 " " brown | | 0 1 |
| 166* 6 " " brown | 0 4 | 0 1 | 190 | 40 " " carmine | | 0 1 |
| 166. 7 " " blue | | 0 1 | 191 | 1 fr. " lilac | | 0 3 |
| 167. 9 " " stone | | 0 1 | 1869-70, arms. | | | |
| 168. 12 " " violet | | 0 3 | 192 | 1 c. rect. | green | 0 1 0 1 |
| 169. 18 " " red | | 0 3 | 193 | 2 " " blue | | 0 1 0 1 |
| UNPAID LETTER STAMP | | | 194 | 5 " " amber | | 0 1 0 1 |
| 1862, "Bayer Post- taxe" and figure of value. | | | 195 | 6 " " carmine | | |
| 170. 3 kr. square black | 0 4 | 0 3 | 196 | 8 " " violet | | 0 2 0 1 |
| RETURNED LETTER STAMPS. | | | 1869-70, head to left. | | | |
| 1867-70, arms. | | | 197 | 10 c. rect. | green | 0 2 0 1 |
| 171. square Ausburg | 0 6 | | 198 | 20 " " blue | | 0 4 0 1 |
| 172. " Bamberg | 0 4 | | 199 | 30 " " amber | | 0 5 0 1 |
| | | | 200 | 40 " " carmine | | 0 1 |
| | | | 201 | 1 fr. " violet | | 0 3 |

| | un- used. | used. | | un- used. | used. | |
|--------------------------------------|--------------------------------|-------|-----|---------------------------------|-------|-----|
| | s. d. | s. d. | | s. d. | s. d. | |
| POST CARD. | | | 224 | 2 s. gr. obl. blue | 0 6 | 0 2 |
| 1870. | | | 225 | 4-4ths. g. gr. sq. brown | 0 2 | |
| 202 | 5 c. oblong brown | 0 2 | | on white paper. | | |
| | | | 226 | $\frac{1}{3}$ s. gr. obl. white | 0 2 | 0 2 |
| | | | 227 | 1 " " yellow | 0 4 | 0 2 |
| | | | 228 | 3 " " pink | 0 8 | 0 2 |
| Bergedorf. | | | | 1865.—arms embossed. | | |
| ADHESIVE STAMPS. | | | 229 | $\frac{1}{4}$ gr. oval black | 0 1 | 0 1 |
| 1861, type as last, second issue. | | | 230 | 1 " " rose | 0 1 | 0 1 |
| 203 | $\frac{1}{2}$ sch. square blue | 0 1 | 231 | 2 " " blue | 0 1 | 0 1 |
| 204 | 1 " " white | 0 2 | 232 | 3 " " brown | 0 1 | 0 1 |
| 205 | 1 $\frac{1}{2}$ " " yellow | 0 3 | | ENVELOPES. | | |
| 206 | 3 " violet on rose | 0 4 | | arms. | | |
| 207 | 4 " " brown | 0 5 | | 1860. | | |
| | | | 233 | 1 s. g. oval yellow | 0 4 | |
| | | | 234 | 2 " " blue | 0 7 | |
| | | | 235 | 3 " " rose | 0 9 | |
| | | | | 1865. | | |
| | | | 236 | 1 gros. small oval rose | 0 1 | |
| | | | 237 | 2 " " blue | 0 2 | |
| | | | 238 | 3 " " brown | 0 3 | |
| | | | | TOWN OF BRUNSWICK. | | |
| | | | 239 | Circular white | 0 4 | |
| | | | 240 | " buff | 0 4 | |
| | | | 241 | " blue | 0 4 | |
| | | | | — | | |
| | | | | Banabian Principalities. | | |
| | | | | MOLDAVIA. | | |
| | | | | 1854, arms. | | |
| | | | 242 | 54 par circular green | 1 6 | |
| | | | 243 | 81 " circular blue | 1 9 | |
| | | | 244 | 108 " " pink | 1 6 | |
| | | | | 1859, arms. | | |
| | | | 245 | 40 par. rect. blue | 1 0 | |
| | | | 246 | 80 " " red | 1 6 | |
| | | | | NEWSPAPER STAMP | | |
| | | | 247 | 5 par. rect. black | 1 0 | |

| | | un- used. | used. | Deccan (The) ADHESIVE STAMPS <i>oriental device</i> | un- used. | used. |
|---|----------------------------------|--------------|--------------|---|--------------|--------------|
| | | <i>s. d.</i> | <i>s. d.</i> | 1869. | <i>s. d.</i> | <i>s. d.</i> |
| Moldo-Wallachia or Roumania. | | | | 277 1 anna obl. olive green | 1 6 | |
| 1862, <i>arms.</i> | | | | 1870. | | |
| 248 | 3 par. rect. orange | 0 6 | | 278 $\frac{1}{2}$ anna rect. brown | 1 0 | |
| 249 | 6 " " lake | 0 9 | 0 4 | 279 2 " " green | 1 6 | |
| 250 | 30 " " blue | | 0 6 | 1871. | | |
| 1865, <i>heads of Prince Cauza</i> | | | | 280 $\frac{1}{2}$ anna rect. red | 0 3 | |
| 251 | 2 par. rect. orange | 0 2 | | 281 3 " " brown | 1 0 | |
| 252 | 2 " " yellow | 0 3 | | 282 4 " " deep grey | 1 3 | |
| 253 | 5 " " blue | 0 4 | | 283 8 " " deep brown | 2 0 | |
| 254 | 30 " " carmine | 0 7 | | 284 12 " " light blue | 2 0 | |
| 1866, <i>head of Prince Charles on coloured paper</i> | | | | — | | |
| 255 | 2 par. rect. yellow | 0 2 | 0 1 | Denmark. ADHESIVE STAMPS. 1851, <i>value in circle.</i> | | |
| 256 | 5 " " blue | 0 4 | 0 2 | 285 2 rigsbk.-sk. sq. blue | | |
| 257 | 20 " " Crimson | 0 6 | 0 2 | 1851, <i>arms.</i> | | |
| 1868-69, <i>head as last, on coloured paper.</i> | | | | 286 4 R.B.S. sq. brown | | 0 1 |
| 258 | 2 bani. rect. orange | 0 2 | 0 1 | 287 3 " " dark " | | 0 1 |
| 259 | 2 " " deep " | 0 1 | 0 1 | 1853-58, <i>arms as last</i> | | |
| 260 | 3 " " lilac | 0 2 | | 288 2 sk. square blue | 0 2 | 0 1 |
| 261 | 4 " " light blue | 0 3 | 0 1 | 289 4 " " brown | 0 4 | 0 1 |
| 262 | 4 " " deep " | 0 2 | 0 1 | 290 8 " " green | 0 2 | 0 1 |
| 263 | 5 " " orange | 0 2 | 0 1 | 291 16 " " lilac | 0 3 | 0 2 |
| 264 | 10 " " blue | 0 3 | 0 1 | 1866-68, <i>arms in oval.</i> | | |
| 265 | 15 " " red | 0 4 | 0 1 | 292 2 sk. rect. blue | 0 2 | 0 1 |
| 266 | 18 " " rose | 0 5 | 0 2 | 293 3 " " mauve | 0 3 | 0 1 |
| 267 | 18 " " red | 0 4 | 0 1 | 294 4 " " rose | 0 3 | 0 1 |
| 268 | 25 " " blue & orange | 0 6 | 0 3 | 295 8 " " stone | | |
| 269 | 50 " " blue & red | 1 0 | 0 3 | 296 16 " " slate green | | |
| 1871. | | | | ENVELOPE STAMPS. | | |
| 270 | 5 bani. rect. red | 0 2 | 0 1 | 1865, <i>arms in oval.</i> | | |
| 271 | 5 " " carmine | 0 2 | 0 1 | 297 2 sk. oval blue | 0 2 | 0 2 |
| 272 | 10 " " blue | | 0 4 | 298 4 " " scarlet | 0 3 | 0 2 |
| 273 | 10 " " orange | 0 3 | 0 1 | 1870-1. | | |
| 274 | 25 " " deep brown | 0 5 | 0 2 | 299 2 sk. rect. blue | 0 2 | 0 1 |
| JOURNAL STAMPS <i>on coloured paper.</i> | | | | 300 3 " " violet | 0 3 | 0 1 |
| 1870-1. | | | | 301 4 " " rose | 0 3 | 0 1 |
| 275 | $1\frac{1}{2}$ bani. rect. green | 0 2 | 0 1 | 302 8 " " brown | 0 5 | 0 2 |
| 276 | $1\frac{1}{2}$ " " blue & yellow | 0 1 | 0 1 | 303 16 " " green | 0 8 | 0 2 |
| | | | | 304 48 " " mauve | 2 0 | 0 3 |

| | | un- used. | used. | | | un- used. | used. |
|---------------------------|------------------------|--------------|-------|---------------------------|------------------------|--------------|-------|
| OFFICIAL STAMPS. | | s. d. | s. d. | | | s. d. | s. d. |
| <i>arms.</i> | | | | 325 | 5 c. rect. light green | 0 1 | 0 1 |
| 1871. | | | | 326 | 10 " " cinnamon | 0 2 | 0 1 |
| 305 | 2 sk. rect. blue | 0 2 | 0 1 | 327 | 20 " " dark blue | 1 0 | 0 1 |
| 306 | 4 " " carmine | 0 3 | 0 1 | 328 | 20 " " light blue | 0 3 | 0 1 |
| 307 | 16 " " green | 0 9 | 0 3 | 329 | 25 " " blue | 2 6 | 0 2 |
| ENVELOPE STAMPS. | | | | 330 | 40 " " orange | 0 5 | 0 1 |
| <i>arms.</i> | | | | 331 | 80 " " carmine | 2 6 | 0 2 |
| 1871. | | | | 332 | 80 " " rose | 1 0 | 0 1 |
| 308 | 2 sk. oval blue | 0 2 | | 333 | 1 fr. " " carmine | 4 6 | 1 0 |
| 309 | 4 " " scarlet | 0 3 | | 1863-70, laurented head. | | | |
| POST CARDS. | | | | 334 | 1 c. rect. olive green | 0 1 | 0 1 |
| 1871. | | | | 335 | 2 " " marone | 0 1 | 0 1 |
| 310 | 2 sk. oblong blue | 0 2 | | 336 | 4 " " lavender | 0 1 | 0 1 |
| 311 | 4 " " carmine | 0 3 | | 337 | 5 " " light green | 0 1 | 0 1 |
| <i>official.</i> | | | | 338 | 10 " " cinnamon | 0 2 | 0 3 |
| 312 | 2 sk. obl. blue | 0 2 | | 339 | 20 " " blue | 0 3 | 0 1 |
| 313 | 4 " " carmine | 0 3 | | 340 | 30 " " brown | 0 4 | 0 1 |
| — | | | | 341 | 40 " " orange | 0 5 | 0 1 |
| Holt. | | | | 342 | 80 " " rose | 1 0 | 0 1 |
| <i>figure.</i> | | | | 343 | 5 fr. oblong lilac | 5 6 | 0 9 |
| 1868. | | | | UNPAID LETTER STAMPS. | | | |
| 314 | 2 sk. rect. brown | 0 4 | | 1859-63, figure of value. | | | |
| — | | | | 344 | 10 c. square black | 0 4 | |
| France. | | | | 345 | 15 " " " | 0 3 | |
| ADHESIVE STAMPS. | | | | French Colonies. | | | |
| REPUBLIC. | | | | 1860-65, eagles | | | |
| 1849-50, head of liberty. | | | | 346 | 1 c. sq. olive green | 0 1 | 0 1 |
| 315 | 10 c. rect | 2 0 | 0 8 | 347 | 5 " " emerald green | 0 2 | 0 2 |
| 316 | 15 " " green | 3 0 | 0 6 | 348 | 10 " sq. cinnamon | 0 3 | 0 2 |
| 317 | 20 " " black | 2 6 | 0 1 | 349 | 20 " " blue | 0 4 | 0 2 |
| 318 | 25 " " blue | 2 6 | 0 1 | 350 | 40 " " vermilion | 0 8 | 0 4 |
| 319 | 40 " " vermilion | | 0 3 | 351 | 80 " " carmine | 1 6 | 0 8 |
| 320 | 1 fr. " " carmine | | 0 8 | <i>republic.</i> | | | |
| 321 | 1 " " orange | | | <i>head of liberty.</i> | | | |
| PRESIDENCY. | | | | <i>lithographed and</i> | | | |
| 1852, head. | | | | <i>unperforated.</i> | | | |
| 322 | 10 c. rect. cinnamon | | 0 9 | 352 | 1 c. rect. olive | | |
| 323 | 25 " " blue | | 0 2 | | green | 0 1 | 0 1 |
| EMPIRE. | | | | 353 | 2 " " brown | 0 2 | 0 1 |
| 1853-62, head. | | | | 354 | 4 " " grey | 0 2 | 0 1 |
| 324 | 1 c. rect. olive green | 0 1 | 0 1 | 355 | 5 " " green | 0 2 | 0 1 |
| | | | | 356 | 10 " " bistre | 0 3 | 0 1 |
| | | | | 357 | 20 " " blue | 0 4 | 0 1 |
| | | | | 358 | 30 " " brown | 0 6 | 0 1 |

| | un- used. | used. | | un. used. | used. |
|-------------------------------------|--------------|-------|---------------------------------|--------------|-------|
| | s. d. | s. d. | | s. d. | s. d. |
| 359 40 c. rect. orange | 0 9 | 0 2 | 388 1 s. gr. oval rose | 0 3 | 0 1 |
| 360 80 " " rose | 1 3 | 0 3 | 389 2 " " blue | 0 3 | 0 1 |
| <i>engraved and perforated</i> | | | 390 3 " " brown | 0 6 | 0 2 |
| 361 10 c. rect. bistre | 0 3 | 0 1 | SOUTHERN STATES. | | |
| 362 15 " " " | 0 3 | 0 1 | ADHESIVE STAMPS. | | |
| 363 20 " " blue | 0 4 | 0 1 | 1852, <i>figure in circle</i> | | |
| 364 25 " " " | | 0 1 | <i>on coloured paper.</i> | | |
| 365 40 " " orange | | 0 2 | 391 1 kr. square green | | 0 1 |
| <hr/> | | | 392 3 " " light blue | | 0 1 |
| Germany. | | | 393 3 " " deep blue | | 0 1 |
| ADHESIVE STAMPS. | | | 394 6 " " rose | | 0 1 |
| NORTHERN STATES | | | 395 9 " " yellow | | 0 1 |
| 1852, <i>figure in square</i> | | | 1859, <i>figure in circle</i> | | |
| <i>on coloured paper.</i> | | | <i>on white paper.</i> | | |
| 366 $\frac{1}{4}$ s. gr. sq. red- | | | 396 1 kr. square green | 0 1 | 0 1 |
| | | | 397 3 " " blue | | 0 2 |
| | | | 398 6 " " rose | | 0 2 |
| 367 $\frac{1}{2}$ " " flesh | 1 6 | 0 4 | 399 9 " " yellow | | 0 1 |
| 368 $\frac{1}{2}$ " " green | 0 8 | 0 3 | 400 15 " " lilac | 0 9 | 0 2 |
| 369 1 " " light blue | 0 9 | 0 4 | 401 20 " " vermilion | 1 6 | 0 5 |
| 370 1 " " dark blue | 1 0 | 0 1 | 1862, <i>figure in circle</i> | | |
| 371 2 " " rose | 1 0 | 0 1 | <i>on white paper.</i> | | |
| 372 3 " " yellow | 1 0 | 0 1 | 402 3 kr. square rose | 0 2 | 0 1 |
| 1860, <i>figure in square</i> | | | 403 6 " " blue | 0 4 | 0 1 |
| <i>on white paper.</i> | | | 404 9 " " brown | 0 6 | 0 4 |
| 373 $\frac{1}{2}$ s. gr. square red | 0 3 | 0 1 | ENVELOPE STAMPS. | | |
| 374 $\frac{1}{2}$ " " green | 0 8 | 0 5 | 1862-65, <i>figure in oval.</i> | | |
| 375 1 " " light blue | 0 7 | 0 1 | 405 1 kr. oct. green | 0 1 | 0 1 |
| 376 2 " " rose | 0 8 | 0 1 | 406 2 " " yellow | 0 2 | 0 2 |
| 377 3 " " russet | 0 9 | 0 1 | 407 3 " " rose | 0 3 | 0 1 |
| 378 5 " " lilac | 1 0 | 0 4 | 408 6 " " blue | 0 4 | 0 1 |
| 379 10 " " vermilion | 2 0 | 0 5 | 409 9 " " brown | | 0 2 |
| 1862-64, <i>figure in square</i> | | | <hr/> | | |
| <i>on white paper.</i> | | | Great Britain. | | |
| 380 $\frac{1}{4}$ s. gr. sq. black | 0 1 | 0 1 | ADHESIVE STAMPS. | | |
| 381 $\frac{1}{4}$ " " green | 0 1 | 0 1 | 1840-54, <i>head of Queen,</i> | | |
| 382 $\frac{1}{4}$ " " orange | 0 7 | 0 1 | <i>with letters in lower</i> | | |
| 383 1 " " rose | 0 8 | 0 1 | <i>angles only.</i> | | |
| 384 2 " " blue | 0 9 | 0 1 | 410 1d. rect. black | 1 0 | 0 1 |
| 385 3 " " brown | 0 6 | 0 1 | 411 1d. " red-brown | 0 3 | 0 1 |
| ENVELOPE STAMPS. | | | 412 1d. " red | 0 2 | 0 1 |
| 1861-66, <i>figure in oval</i> | | | 413 2d. " blue | | 0 1 |
| 386 $\frac{1}{2}$ s. gr. oval black | 0 1 | | | | |
| 387 $\frac{1}{2}$ " " orange | 0 2 | 0 1 | | | |

| | un- used. | used. | | un- used. | used. |
|--|--------------|-------|---|--------------|-------|
| | s. d. | s. d. | | s. d. | s. d. |
| <i>with white lines.</i> | | | | | |
| 414 2d. rect. blue | 0 3 | 0 9 | 443 4d. circular red | 0 8 | |
| 1847-55, embossed head. | | | 444 6d. oct. violet | 1 0 | |
| 415 6d. oct. violet | | 0 4 | 445 1s. " green | 2 0 | |
| 416 10d. " brown | | 0 5 | | | |
| 417 1s. " green | | 0 3 | ESSAY. 1840. | | |
| 1855-56, without letters in angles. | | | 446 1d. rect. v. r. black | | |
| 418 4d. rect. rose | | 0 1 | TELEGRAPH STAMP. 1872. | | |
| 419 6d. " lilac | | 0 1 | 447 1s. green | | |
| 420 1s. " green | | 0 1 | NEWSPAPER WRAPPER STAMP. <i>with date.</i> 1870. | | |
| <i>with small letters in each angle.</i> | | | 448 ½d. large rect. green | 0 1 | |
| 421 3d. rect. pink. | | 0 1 | <i>without date.</i> | | |
| 422 4d. " red | | 0 1 | 449 ½d. large rect. green | 0 1 | |
| 423 6d. " lilac | | 0 1 | | | |
| 424 9d. " straw | 1 3 | 0 3 | POST CARD. | | |
| 425 1s. " green | | 0 2 | 450 ½d. obl. mauve | 0 2 | |
| <i>with large letters in each angle.</i> | | | | | |
| 426 1d. rect. red. | | | GREECE. | | |
| 427 2d. " blue | | | ADHESIVE STAMPS. | | |
| 428 3d. " pink | | 0 1 | 1861, head of Mercury. | | |
| 429 4d. " red | | 0 1 | 451 1 lep rect. marone | 0 1 | 0 1 |
| 430 6d. " lilac | | 0 1 | 452 2 " " cinnamon | 0 1 | 0 1 |
| 431 9d. " straw | | 0 2 | 453 5 " " green | 0 2 | 0 1 |
| 432 10d. " brown | | 0 2 | 454 10 " " red | 0 3 | 0 1 |
| 433 1s. " green | | 0 1 | 455 20 " " blue | 0 5 | 0 1 |
| 434 2s. " blue | | 0 2 | 456 40 " " violet | 0 9 | 0 1 |
| 435 5s. " rose | | 0 5 | 457 40 " reddish-pink | 0 8 | 0 2 |
| ENVELOPES. 1840. | | | 458 80 " " rose | 1 3 | 0 2 |
| 436 1d. <i>Mutready</i> black | 2 6 | 2 6 | | | |
| 437 2d. " blue | 6 0 | 6 0 | GUATEMALA. | | |
| 1841, without date. | | | ADHESIVE STAMPS. | | |
| 438 1d. oval. pink | 0 5 | 0 1 | <i>arms.</i> 1871. | | |
| 439 2d. " blue | 0 9 | 0 3 | 459 1 centavo rect. | | |
| 1855-59, with date. | | | light brown | 0 3 | |
| 440 1d. oval pink | 0 2 | 0 1 | 460 5 " deep brown | 0 6 | 0 4 |
| 441 2d. " blue | 0 4 | 0 2 | 461 10 " " blue | 1 0 | 0 9 |
| 442 3d. wavy border rose | 0 6 | | 462 20 " " carmine | 2 0 | 0 8 |

| | un- used. | used. | | un- used. | used. |
|---------------------------------|----------------|-----------------------|-----|--------------|-------------------------------|
| | s. d. | s. d. | | s. d. | s. d. |
| Hamburgh. | | | | | |
| ADHESIVE STAMPS. | | | | | |
| 1859-67. | | | | | |
| <i>figure and castle.</i> | | | | | |
| 463 | ½ sch. rect. | black | 0 1 | 0 1 | 1859, <i>figure and crown</i> |
| 464 | 1 " " | chocolate | 0 1 | 0 1 | <i>in oval.</i> |
| 465 | 1½ " " | mauve | 0 2 | | <i>plain ground.</i> |
| 466 | 1½ " " | (<i>embossed</i>) " | 0 3 | 0 2 | 495 3 pfcn. rect. rose |
| 467 | 1½ " " | rose | 0 2 | 0 2 | |
| 468 | 2 " " | red | 0 2 | 0 2 | 1860, <i>post-horn and</i> |
| 469 | 2½ " " | green | | 0 3 | <i>crown.</i> |
| 470 | 2½ " " | bluegreen | 0 3 | 0 2 | 496 ½ gr. rect. black |
| 471 | 3 " " | blue | | 0 3 | |
| 472 | 3 " " | bright " | | 0 3 | 1859-61, <i>head.</i> |
| 473 | 4 " " | green | 0 3 | 0 2 | 497 1 gr. rect. rose |
| 474 | 7 " " | orange | 1 0 | 0 2 | 498 2 " " blue |
| 475 | 7 " " | mauve | 0 3 | 0 2 | 499 3 " " yellow |
| 476 | 9 " " | yellow | 0 5 | 0 4 | 500 3 " " brown |
| | | | | | 501 10 " " green |
| ENVELOPE STAMPS. | | | | | |
| 1866, <i>figure and castle.</i> | | | | | |
| 477 | ¼ sch. rect. | black | 0 2 | | 1864, <i>figure and crown</i> |
| 478 | 1¼ " " | mauve | 0 4 | | <i>in oval.</i> |
| 479 | 1½ " " | rose | 0 4 | | 502 3 pfcn. rect. green |
| 480 | 2 " " | orange | | 0 5 | |
| 481 | 3 " " | blue | 0 4 | | ENVELOPE STAMPS. |
| 482 | 4 " " | green | 0 5 | | 1857, <i>head</i> |
| 483 | 7 " " | mauve | 0 6 | | <i>figure at bottom.</i> |
| | | | | | 503 1 g. gr. oval green |
| Hanover. | | | | | |
| ADHESIVE STAMPS. | | | | | |
| 1850, <i>arms and figures,</i> | | | | | |
| <i>plain ground.</i> | | | | | |
| 484 | 1 g. gr. rect. | blue | | 0 6 | 1858-61, <i>head</i> |
| 485 | 1 " " | green | | 0 2 | <i>figure on each side.</i> |
| 486 | 1-30 thl. | crimson | | 0 2 | 504 1 gr. oval rose |
| 487 | 1-30 " " | rose | | 0 2 | 505 2 " " blue |
| 488 | 1-15 " " | blue | | 0 2 | 506 3 " " yellow |
| 489 | 1-10 " " | orange | | 0 4 | 507 3 " " brown |
| LOCAL ENVELOPE STAMPS. | | | | | |
| 1853, <i>figure and ground</i> | | | | | |
| <i>in oval.</i> | | | | | |
| <i>ground of network.</i> | | | | | |
| 490 | 3 pfcn. rect. | rose | | 0 6 | 1858, <i>bugle horn.</i> |
| 1856, <i>arms and figures</i> | | | | | |
| <i>ground of network.</i> | | | | | |
| 491 | 1 g. gr. rect. | green | | 0 2 | 508 [½ gr.] circular green |
| | | | | | 1861, <i>horse.</i> |
| | | | | | 509 [½ gr.] circular green |
| Heligoland. | | | | | |
| ADHESIVE STAMPS. | | | | | |
| 1867, <i>head.</i> | | | | | |
| 510 | ½ sch. | green & rose | | 0 2 | 0 2 |

| | | un- used. | used. | | | un- used. | used. |
|-----|---|--------------|-------|--------------------------|-----------------|--------------|---------|
| | | s. d. | s. d. | | | s. d. | s. d. |
| 511 | 1 sch. green & rose | 0 3 | 0 2 | | | | |
| 512 | 2 " " " | 0 4 | 0 3 | | | | |
| 513 | 6 " " " | 1 0 | 0 4 | | | | |
| | | | | Italy. | | | |
| | | | | ADHESIVE STAMPS. | | | |
| | | | | 1856, embossed head. | | | |
| | | | | 536 | 5 c rect | green | 0 2 0 1 |
| | | | | 537 | 10 " " | yellow | 0 2 0 1 |
| | | | | 538 | 10 " " | red-brown | 0 2 0 1 |
| | | | | 539 | 15 " " | blue | 0 2 0 2 |
| | | | | 540 | 20 " " | " | 0 2 0 1 |
| | | | | 541 | 40 " " | red | 0 2 0 1 |
| | | | | 542 | 80 " " | yellow | 0 3 0 2 |
| | | | | 543 | 3 lire,, | bronze | 0 4 |
| 514 | 1860, head. ½ sch. light green and rose | 0 2 | 0 2 | | | | |
| | | | | Holland. | | | |
| | | | | ADHESIVE STAMPS. | | | |
| | | | | 1852, head in oval. | | | |
| 515 | 5 c. small rect. blue | 0 4 | 0 1 | 544 | 15 c rect. | blue | 0 3 0 1 |
| 516 | 10 " " red | 0 6 | 0 1 | | | | |
| 517 | 15 " " orange | 0 8 | 0 3 | | | | |
| | | | | 1863, head. | | | |
| | | | | 1864-67, head. | | | |
| | 1864, head in oval. | | | 545 | 5 c. rect. | green | 0 1 0 1 |
| 518 | 5 c. rect. blue | 0 2 | 0 1 | 546 | 10 " " | orange | 0 2 0 1 |
| 519 | 10 " " rose | 0 4 | 0 1 | 547 | 15 " " | blue | 0 4 0 1 |
| 520 | 15 " " orange | 0 6 | 0 2 | 548 | 20 " " | " | 0 5 0 1 |
| | | | | | | | |
| | 1867, head in circle. | | | 549 | 20 " " | (1867) " | 0 4 0 1 |
| 521 | 5 c. rect. blue | 0 2 | 0 1 | 550 | 30 " " | chocolate | 0 5 0 1 |
| 522 | 10 " " carmine | 0 4 | 0 1 | 551 | 40 " " | rose | 0 6 0 1 |
| 523 | 15 " " red-brown | 0 6 | 0 1 | 552 | 60 " " | lilac | 0 9 0 1 |
| 524 | 20 " " green | | 0 2 | 553 | 2 lire .. | scarlet | 0 2 |
| 525 | 25 " " purple | | 0 2 | | | | |
| 526 | 50 " " gold | | 0 3 | UNPAID LETTER STAMPS. | | | |
| | | | | 1860-63, figure. | | | |
| | 1869, arms. | | | 554 | 10 c. obl. oval | yellow | 0 4 |
| 527 | 1 c. rect. black | 0 2 | 0 1 | 555 | 10 " " | orange | 0 4 |
| 528 | 1 " " green | 0 1 | 0 1 | | | | |
| 529 | 1½ " " pink | 0 1 | 0 1 | 1869-70, figure. | | | |
| 530 | 2 " " yellow | 0 1 | 0 1 | 556 | 1 c. obl. | yellow | 0 1 |
| | | | | 557 | 2 " " | " | 0 2 |
| | | | | 558 | 5 " " | " | 0 2 |
| | | | | 559 | 10 " " | " | 0 3 |
| | | | | 560 | 30 " " | " | 0 6 |
| | | | | 561 | 40 " " | " | 0 7 |
| | | | | 562 | 50 " " | " | 0 9 |
| | | | | 563 | 60 " " | " | 1 0 |
| | | | | 564 | 1 lira " | blue | 0 4 |
| | | | | 565 | 2 lira ,, | " | |
| | | | | NEWSPAPER STAMPS. | | | |
| | | | | 1861-2, embossed figure. | | | |
| | UNPAID LETTER STAMPS. figure of value. | | | 566 | 1 c. rect. | black | 0 2 0 1 |
| 531 | 5 c. brown on yellow | 0 5 | 0 5 | 567 | 2 " " | " | 0 3 0 1 |
| 532 | 10 " " carmine on blue | 0 8 | 0 8 | 568 | 2 " " | yellow | 0 2 0 1 |
| | | | | | | | |
| | | | | Ionian Islands. | | | |
| | | | | ADHESIVE STAMPS. | | | |
| | | | | 1859, head. | | | |
| 533 | [½d.] rect. yellow | 0 3 | | | | | |
| 534 | [1d.] " blue | 0 5 | | | | | |
| 535 | [2d.] " lake | 0 8 | | | | | |

| | | | un- used. | used. | | | | un- used. | used. | |
|-------------------------|--------------|-------------|--------------|-------|-----------------------------------|-----------------|--------------|--------------|-------|-----|
| | | | s. d. | s. d. | | | | s. d. | s. d. | |
| 1864, figure. | | | | | 598 | 12½ | rect. | rose | 0 3 | 0 2 |
| 569 | 1 c. rect. | green | 0 1 | 0 1 | 599 | 20 | " " | brown | 0 4 | 0 1 |
| 570 | 2 " " | brown | 0 1 | 0 1 | 600 | 25 | " " | marone | 0 9 | 0 4 |
| — | | | | | 601 | 25 | " " | blue | 0 4 | 0 2 |
| Lubeck. | | | | | 602 | 30 | " " | lilac | 0 6 | 0 3 |
| ADHESIVE STAMPS. | | | | | 603 | 37½ | " " | green | 0 9 | 0 3 |
| 1859, arms. | | | | | 694 | 37½ | " " | brown | 0 7 | 0 3 |
| 571 | ½ sch. rect. | violet | 0 2 | 0 1 | 605 | 40 | " " | vermillion | 0 8 | 0 3 |
| 572 | 1 " " | yellow | 0 2 | 0 2 | — | | | | | |
| 573 | 2 " " | brown | 0 3 | 0 2 | Malta. | | | | | |
| 574 | 2½ " " | rose | 0 3 | 0 2 | ADHESIVE STAMPS. | | | | | |
| 575 | 4 " " | green | 0 4 | 0 2 | 1860-64, head. | | | | | |
| 1863-65, embossed arms. | | | | | 606 | ¼ d. rect. | buff | | 0 2 | |
| 576 | ½ sch. oval | green | 0 1 | 0 1 | 607 | ½ d. " " | light orange | | 0 1 | |
| 577 | 1 " " | orange | 0 2 | 0 1 | — | | | | | |
| 578 | 1½ " " | brown | 0 3 | 0 2 | Mecklenburg- Schwerin. | | | | | |
| 579 | 1½ " " | rect. mauve | 0 2 | 0 2 | ADHESIVE STAMPS. | | | | | |
| 580 | 2 " " | oval rose | 0 2 | 0 2 | 1856, arms on dotted ground. | | | | | |
| 581 | 2½ " " | blue | 0 2 | 0 2 | 608 | 4-4ths sch. sq. | red | 0 5 | 0 3 | |
| 582 | 4 " " | brown | 0 3 | 0 2 | 1856-66, arms on plain ground. | | | | | |
| ENVELOPE STAMPS. | | | | | 609 | 4-4ths sch. sq. | red | 0 2 | 0 1 | |
| 1863, arms. | | | | | 610 | 2 " " | lilac | 0 3 | 0 2 | |
| 583 | ½ sch. oval | green | 0 1 | 0 1 | 611 | 3 " " | yellow | 0 4 | 0 2 | |
| 584 | 1 " " | orange | 0 2 | 0 1 | 612 | 5 " " | blue | 1 3 | 0 6 | |
| 585 | 1¼ " " | oct. mauve | 0 3 | 0 1 | 613 | 5 " " | brown | 0 6 | 0 3 | |
| 586 | 2 " " | oval rose | 0 3 | 0 2 | ENVELOPE STAMPS. | | | | | |
| 587 | 2½ " " | blue | 0 3 | 0 2 | 1856-66, arms. | | | | | |
| 588 | 4 " " | brown | 0 4 | 0 2 | 614 | 1 sch. oval | red | 0 2 | | |
| — | | | | | 615 | 1½ " " | green | 0 3 | | |
| Luxembourg. | | | | | 616 | 2 " " | mauve | 0 4 | 0 3 | |
| ADHESIVE STAMPS. | | | | | 617 | 3 " " | yellow | 0 5 | 0 4 | |
| 1852, head. | | | | | 618 | 5 " " | blue | 1 3 | 0 9 | |
| 589 | 10 c. rect. | black | | 0 2 | 619 | 5 " " | brown | 0 9 | 0 5 | |
| 590 | 1 s. gr. | red | | 0 3 | — | | | | | |
| 291 | 1 " " | rose | | 0 4 | Mecklenburg-Strelitz. | | | | | |
| 1859-67, arms. | | | | | ADHESIVE STAMPS. | | | | | |
| 592 | 1 c. rect. | buff | 0 1 | 0 1 | 1864, arms. | | | | | |
| 593 | 1 " " | brown | 0 1 | 0 1 | 620 | ¼ sch. rect. | orange | 0 1 | | |
| 594 | 2 " " | black | 0 1 | 0 1 | — | | | | | |
| 595 | 4 " " | yellow | 0 1 | 0 1 | | | | | | |
| 596 | 10 " " | blue | 0 4 | 0 1 | | | | | | |
| 597 | 10 " " | lilac | 0 3 | 0 1 | | | | | | |

| | | | un- | used. | | | | un- | used. | | | | |
|-----------------------|---------------|------------------|-------|-------|-----------------------|---------------|-----------------------------|---------------|----------------------|---|---|---|---|
| | | | s. d. | s. d. | | | | s. d. | s. d. | | | | |
| 621 | $\frac{1}{2}$ | sch. rect. green | 0 | 2 | 648 | 20 | grano rect. lake | | 0 | 3 | | | |
| 622 | 1 | " " violet | 0 | 3 | 649 | 50 | " " " | | 1 | 6 | | | |
| 623 | 1 | s. gr. oct. rose | 0 | 3 | PROVISIONAL STAMPS. | | | | | | | | |
| 624 | 2 | " " blue | 0 | 4 | 1860, arms in circle. | | | | | | | | |
| 625 | 3 | " " brown | 0 | 6 | 650 | $\frac{1}{2}$ | tornese rect. blue | | | | | | |
| ENVELOPE STAMPS. | | | | | cross in circle. | | | | | | | | |
| 1864, arms. | | | | | 651 | $\frac{1}{2}$ | tornese rect. blue | | | | | | |
| 626 | 1 | s. gr. oct. rose | 0 | 3 | 1861, embossed head | | | | | | | | |
| 627 | 2 | " " blue | 0 | 5 | 652 | $\frac{1}{2}$ | tornese rect green | 0 | 3 | 0 | 3 | | |
| 628 | 3 | " " brown | 0 | 6 | 653 | $\frac{1}{2}$ | grano " brown | 0 | 3 | 0 | 3 | | |
| — | | | | | 654 | 1 | " " black | 0 | 3 | 0 | 3 | | |
| Modena. | | | | | 655 | 2 | " " blue | 0 | 3 | 0 | 2 | | |
| ADHESIVE STAMPS. | | | | | 656 | 5 | " " rose | 0 | 3 | 0 | 2 | | |
| 1852-56, arms (eagle) | | | | | 657 | 5 | " " lilac | 2 | 6 | 0 | 8 | | |
| 629 | 5 | c. rect. green | 0 | 3 | 0 | 3 | 658 | 10 | " " orange | 0 | 3 | 0 | 3 |
| 630 | 9 | " B.G. " violet | 1 | 0 | 0 | 4 | 659 | 20 | " " yellow | 0 | 3 | 0 | 3 |
| 631 | 10 | " " rose | 0 | 3 | 0 | 3 | 660 | 50 | " pearl-grey | 0 | 4 | 0 | 6 |
| 632 | 10 | " " violet | 0 | 3 | 0 | 3 | 661 | 50 | " " blue | 1 | 6 | | |
| 633 | 15 | " " yellow | 0 | 3 | 0 | 2 | — | | | | | | |
| 634 | 25 | " " pale ochre | 0 | 3 | 0 | 3 | North German Confederation. | | | | | | |
| 635 | 40 | " " blue | 0 | 3 | 0 | 3 | ADHESIVE STAMPS. | | | | | | |
| 636 | 1 | lira " white | 0 | 6 | | | 1868, figure in circle | | | | | | |
| PROVISIONAL STAMPS. | | | | | 662 | $\frac{1}{2}$ | gr. rect. lilac | 0 | 1 | 0 | 1 | | |
| 1859, arms (cross). | | | | | 663 | $\frac{1}{2}$ | " " green | 0 | 1 | 0 | 1 | | |
| 637 | 5 | c. rect. green | 0 | 3 | 664 | $\frac{1}{2}$ | " " orange | 0 | 1 | 0 | 1 | | |
| 638 | 15 | " " purple | 0 | 3 | 665 | 1 | " " pink | 0 | 2 | 0 | 1 | | |
| 639 | 20 | " " lilac | 0 | 3 | 666 | 2 | " " blue | 0 | 4 | 0 | 1 | | |
| 640 | 40 | " " rose | 0 | 3 | 667 | 5 | " " pale brown | | | 0 | 1 | | |
| 641 | 80 | " " orange | 0 | 3 | 1868, figure in oval. | | | | | | | | |
| NEWSPAPER STAMP. | | | | | 668 | 1 | kr. rect. green | 0 | 1 | 0 | 1 | | |
| 1859, arms (eagle) | | | | | 669 | 2 | " " orange | 0 | 2 | 0 | 1 | | |
| in circle. | | | | | 670 | 3 | " " pink | 0 | 2 | 0 | 1 | | |
| 642 | 10 | c. square black | 0 | 4 | 671 | 7 | " " blue | 0 | 4 | 0 | 1 | | |
| — | | | | | 672 | 18 | " " pale brown | | | 0 | 2 | | |
| Naples. | | | | | REGISTRATION STAMPS. | | | | | | | | |
| ADHESIVE STAMPS. | | | | | 1869. | | | | | | | | |
| 1857, arms. | | | | | 673 | 10 | gr. obl. drab | | | 0 | 1 | | |
| 643 | $\frac{1}{2}$ | grano rect. lake | 2 | 0 | 1 | 0 | 674 | 30 | " " azure | | 0 | 1 | |
| 644 | 1 | " " " | 0 | 6 | 0 | 2 | OFFICIAL STAMPS. | | | | | | |
| 645 | 2 | " " " | 0 | 6 | 0 | 2 | 1870, figure. | | | | | | |
| 646 | 5 | " " " | 0 | 8 | 0 | 2 | 675 | $\frac{1}{2}$ | gr. obl. blk. & buff | 0 | 1 | | |
| 647 | 10 | " " " | 0 | 2 | | | | | | | | | |

| | | un- used. | used. | | | un- used. | used. |
|-------------------------|-----------------------------------|--------------|--------------|--|----------------------------------|--------------|--------------|
| | | <i>s. d.</i> | <i>s. d.</i> | | | <i>s. d.</i> | <i>s. d.</i> |
| 676 | $\frac{1}{2}$ gr obl. blk. & buff | 0 1 | | 703 | 3 sk. rect. lilac | 0 4 | 0 2 |
| 677 | $\frac{1}{2}$ " " " | 0 1 | | 704 | 4 " " blue | 0 4 | 0 2 |
| 678 | 1 " " " | 0 2 | | 705 | 8 " " lake | 0 6 | 0 1 |
| 679 | 2 " " " | 0 4 | | 1863-65, arms. | | | |
| 680 | 1 kr " " | 0 1 | | 706 | 2 sk. rect. yellow | 0 3 | 0 1 |
| 681 | 2 " " " | 0 2 | | 707 | 3 " " mauve | 0 3 | 0 1 |
| 682 | 3 " " " | 0 2 | | 708 | 4 " " blue | 0 4 | 0 1 |
| 683 | 7 " " " | 0 4 | | 709 | 8 " " rose | 0 8 | 0 1 |
| NEWSPAPER BANDS. | | | | 710 | 24 " " brown | 2 0 | 0 1 |
| 1869, figure. | | | | 1867-68, arms, value in each lower angle. | | | |
| 684 | $\frac{1}{2}$ gr. rect. green | 0 3 | | 711 | 1 sk. rect. black | 0 2 | 0 1 |
| 685 | 1 kr. " " | 0 3 | | 712 | 2 " " yellow | 0 3 | 0 1 |
| ENVELOPE STAMP. | | | | 713 | 3 " " lilac | 0 3 | 0 1 |
| 1868, figure in circle. | | | | 714 | 4 " " blue | 0 4 | 0 1 |
| 686 | 1 gr. rect. rose | 0 3 | 0 1 | 715 | 8 " " pink | 0 7 | 0 1 |
| embossed eagle. | | | | 716 | 24 " " brown | | |
| 1871. | | | | BERGEN. | | | |
| 687 | $\frac{1}{2}$ gr. rect. mauve | | 0 1 | 1866, castle. | | | |
| 688 | " " green | | 0 1 | 717 | [1 sk.] rect. brown | 0 2 | |
| 689 | $\frac{1}{2}$ " " orange | | 0 1 | 1868, figure. | | | |
| 690 | 1 " " rose | | 0 1 | 718 | 2 sk. rect. rose | | |
| 691 | 2 " " blue | | 0 1 | DRAMMENS. | | | |
| 692 | 5 " " stone | | 0 1 | 1869, sword and key. | | | |
| 693 | 1 kr " green | | 0 1 | 719 | 1 sk. rect. blue | 0 4 | |
| 694 | 2 " " orange | | 0 1 | 720 | 2 " " violet | | |
| 695 | 3 " " rose | | 0 1 | 721 | 2 " " green | | |
| 696 | 7 " " blue | | 0 1 | DRONTHEIM. | | | |
| 697 | 1 $\frac{1}{2}$ " " stone | | 0 2 | 1865, monogram in oval. | | | |
| figure in oval. | | | | 722 | [1 sk.] rect. brown | 0 2 | |
| 698 | 3 kr. rect. rose | | 0 1 | 1872. | | | |
| embossed eagle. | | | | 723 | 3 sk. red | | 0 2 |
| 1871. | | | | Oldenburg. | | | |
| 699 | 1 gr. rect. rose | | 0 1 | ADHESIVE STAMPS. | | | |
| 700 | 3 kr. " rose | | 0 1 | 1852, figure on shield on coloured paper. | | | |
| Norway. | | | | 724 | $\frac{1}{2}$ s. gr. rect. green | | 0 10 |
| ADHESIVE STAMPS. | | | | 725 | 1-30 tha. " blue | | 0 4 |
| 1854, arms. | | | | 1856, head. | | | |
| 701 | 4 sk. rect. blue | | 0 2 | | | | |
| 1856, head. | | | | | | | |
| 702 | 2 sk. rect. yellow | 0 3 | 0 2 | | | | |

| | | un-used. | used. | | | un-used. | used. |
|--|----------------------|----------|-------|---|-----------------------|----------|-------|
| | | s. d. | s. d. | | | s. d. | s. d. |
| 726 | 1-15 tha. rect. rose | | 0 4 | 753 | 25 c. rect. red brown | | 0 6 |
| 727 | 1-10 " " yellow | | 0 5 | | | | |
| 1860, arms and crown on coloured paper. | | | | 1857, fleur-de-lis in circle on coloured paper. | | | |
| 728 | ½ gr. rect. green | 1 0 | 0 6 | 754 | 5 c. rect. yellow | 0 3 | 0 3 |
| 729 | 1 " " blue | 1 3 | 0 3 | 755 | 10 " " white | 0 3 | 0 3 |
| 730 | 2 " " rose | 1 9 | 0 6 | 756 | 15 " " rose | 0 9 | 0 3 |
| 731 | 3 " " yellow | 1 6 | 0 8 | 757 | 25 " " purple | | 0 6 |
| 1861, arms and crown on white paper. | | | | 758 | 40 " " blue | | 0 8 |
| 732 | ¼ gr. rect. yellow | 0 3 | 0 2 | 1858, fleur-de-lis in oval | | | |
| 733 | ½ " " green | 0 4 | 0 3 | 759 | 15 c. rect. pink red | 0 3 | |
| 734 | ¾ " " marone | 0 5 | 0 3 | 760 | 25 " " brown | 0 3 | |
| 735 | 1 " " blue | | 0 3 | 761 | 40 " " blue | 0 3 | |
| 736 | 2 " " red | | 0 5 | PROVISIONAL STAMPS. | | | |
| 737 | 3 " " yellow | | 0 6 | 1859. | | | |
| 1862, embossed arms and crown. | | | | 762 | 5 c. oct. green | 0 4 | |
| 738 | ¼ gr. oval green | 0 1 | 0 1 | 763 | 10 " " brown | 0 4 | |
| 739 | ½ " " orange | 0 2 | 0 1 | 764 | 20 " " blue | 0 4 | |
| 740 | 1 " " rose | 0 3 | 0 1 | 765 | 40 " " red | 0 4 | |
| 741 | 2 " " blue | 0 4 | 0 2 | 766 | 80 " " orange | | |
| 742 | 3 " " brown | 0 6 | 0 2 | NEWSPAPER STAMPS. | | | |
| ENVELOPE STAMPS. | | | | 1854. | | | |
| 1861, arms and crown. | | | | 767 | 6 c. oct. rose | 0 4 | |
| 743 | ½ gr. oval brown | 0 9 | 0 6 | 768 | 9 " " blue | 0 4 | |
| 744 | 1 " " blue | 1 0 | 0 6 | ----- | | | |
| 745 | 2 " " rose | 1 3 | 0 8 | Portugal. | | | |
| 746 | 3 " " yellow | 1 3 | 0 9 | ADHESIVE STAMPS. | | | |
| 1862, arms and crown. | | | | 1853, head of Queen Maria II. | | | |
| 747 | ½ gr. oval orange | 0 2 | 0 2 | 769 | 5 reis rect. brown | 1 3 | 0 8 |
| 748 | 1 " " rose | 0 3 | 0 2 | 770 | 25 " " blue | | 0 3 |
| 749 | 2 " " blue | 0 4 | 0 3 | 771 | 50 " " green | 1 6 | 1 0 |
| 750 | 3 " " brown | 0 6 | 0 4 | 772 | 100 " " lilac | | 1 0 |
| ----- | | | | 1855-58, head of King Pedro V. to the right. | | | |
| Parma. | | | | 773 | 5 reis rect. brown | 0 6 | 0 4 |
| ADHESIVE STAMPS. | | | | 774 | 25 " " blue | 0 9 | 0 4 |
| 1852, fleur-de-lis in circle on white paper. | | | | 775 | 25 " " rose | 0 8 | 0 3 |
| 751 | 5 c. rect. yellow | | 1 0 | 776 | 50 " " green | | 0 4 |
| 752 | 15 " " red | | 0 6 | 777 | 100 " " lilac | 1 3 | 0 4 |

| | un- used. | used. | | un- used. | used. |
|---|--------------|-------|---------------------------|--------------|-------|
| | s. d. | s. d. | | s. d. | s. d. |
| 1862, head of King Louis I to the left. | | | 805 4 pfen. oct. green | 0 1 | 0 1 |
| 778 5 reis. rect. brown | 0 2 | 0 1 | 806 6 " vermilion | 0 1 | 0 1 |
| 779 10 " " yellow | 0 3 | 0 1 | 807 1 s. gr. oval rose | 0 1 | 0 1 |
| 780 25 " " rose | 0 5 | 0 2 | 808 2 " " blue | 0 1 | 0 1 |
| 781 50 " " green | 0 9 | 0 4 | 809 3 " " stone | 0 1 | 0 1 |
| 782 100 " " lilac | 1 3 | 0 4 | | | |
| | | | 1867, arms. | | |
| 1866, head of King Louis I. to the left. | | | 810 1 kr. oct. green | 0 1 | 0 1 |
| 783 5 r larger rect black | 0 1 | 0 1 | 811 2 " " orange | 0 2 | 0 1 |
| 784 10 " " yellow | 0 2 | 0 2 | 812 3 " " pink | 0 2 | 0 1 |
| 785 20 " " ochre | 0 3 | 0 2 | 813 6 " " blue | 0 3 | 0 1 |
| 786 25 " " rose | 0 4 | 0 2 | 814 6 " " bistre | 0 3 | 0 1 |
| 787 50 " " green | 0 6 | 0 3 | | | |
| 788 80 " " orange | | 0 3 | REGISTRATION STAMPS. | | |
| 789 100 " " lilac | | 0 2 | 1866, figure. | | |
| 790 120 " " blue | | 0 2 | 815 10 s. gr. oblong rose | | 0 2 |
| 791 240 " " mauve | | 0 3 | 816 30 " " blue | | 0 2 |
| | | | | | |
| | | | ENVELOPE STAMPS. | | |
| | | | 1851, head of King. | | |
| | | | 820 1 s. gr. large oval | | |
| | | | | | |
| | | | | 0 4 | 0 1 |
| | | | 821 2 " " rose | 0 6 | 0 2 |
| | | | 822 3 " " blue | 0 9 | 0 2 |
| | | | 823 4 " " yellow | | |
| | | | 824 5 " " oct brown | | 1 3 |
| | | | 825 6 " " lilac | | 0 9 |
| | | | 826 7 " " green | | 1 6 |
| | | | 827 7 " " red | | 1 6 |
| | | | | | |
| | | | 1861-67, arms. | | |
| | | | 827 3 pfen. oct. mauve | 1 6 | |
| | | | 828 6 " " orange | 1 6 | |
| | | | 829 1 s. gr. small oval | | |
| | | | | 0 2 | 0 1 |
| | | | 830 2 " " rose | 0 3 | 0 1 |
| | | | 831 3 " " blue | 0 5 | 0 1 |
| | | | 831 3 " " stone | | |
| | | | | | |
| | | | 1867, arms. | | |
| | | | 832 1 kr. oct. green | 0 1 | 0 1 |
| | | | 833 2 " " orange | 0 2 | 0 1 |
| | | | 834 3 " " pink | 0 3 | 0 1 |
| | | | 835 6 " " blue | 0 4 | 0 1 |
| | | | 836 9 " " bistre | 0 6 | 0 2 |
| | | | | | |
| | | | | | |
| | | | Romagna. | | |
| | | | ADHESIVE STAMPS. | | |
| | | | 1859, figure. | | |
| | | | 804 3 pfen. oct. mauve | 0 1 | 0 1 |
| | | | 837 ½ bai. rect. lemon | 0 3 | |

| | | | un- | used. | | | | used. | used. | |
|-------------------------|----|----------------------|-------|-------|---------------------------------|----|------------|--------------|-------|-----|
| | | | s. d. | s. d. | | | | s. d. | s. d. | |
| 838 | 1 | bai. rect. drab | 0 3 | | 873 | 30 | ,, | rose & green | 1 9 | 0 2 |
| 839 | 2 | ,, ,, yellow | 0 3 | | ENVELOPE STAMPS. | | | | | |
| 840 | 3 | ,, ,, dark green | 0 3 | | 1848-54, arms. | | | | | |
| 841 | 4 | ,, ,, red brown | 0 3 | | 874 | 5 | kop. circ. | blue | | |
| 842 | 5 | ,, ,, lilac | 0 3 | | 875 | 10 | ,, ,, | black | 0 6 | |
| 843 | 6 | ,, ,, green | 0 3 | | 876 | 20 | ,, ,, | blue | | |
| 844 | 8 | ,, ,, rose | 0 3 | | 877 | 30 | ,, ,, | rose | | |
| 845 | 20 | ,, ,, blue | 0 4 | | 1869-70, arms. | | | | | |
| Roman States. | | | | | 878 | 5 | kop. circ. | mauve | 0 6 | |
| ADHESIVE STAMPS. | | | | | 879 | 5 | ,, ,, | pink | | |
| arms (keys and tiara). | | | | | 880 | 10 | ,, oval | brown | 1 0 | |
| 846 | 1 | baj. oval grey | 0 3 | | 881 | 20 | ,, ,, | blue | 1 6 | |
| 847 | 1 | ,, ,, purple | 0 3 | | 882 | 30 | ,, ,, | pink | 2 0 | |
| 848 | 1 | ,, ,, brown | 0 2 | 0 2 | District or Rural Posts. | | | | | |
| 849 | 1 | ,, ,, green | 0 2 | 0 2 | ADHESIVE STAMPS. | | | | | |
| 850 | 2 | ,, obl. ,, | 0 3 | 0 2 | 1869-71. | | | | | |
| 851 | 3 | oval cinnamon | 0 4 | 0 2 | ATKAR | | | | | |
| 852 | 4 | circular yellow | 0 5 | 0 2 | 883 | 2 | kop. rect. | black | | |
| 853 | 4 | ,, ,, brown | 0 7 | 0 2 | BELOZERSK | | | | | |
| 854 | 5 | ,, rect. rose | 0 7 | 0 2 | 884 | 2 | kop rect | black. | | |
| 855 | 6 | ,, octlight grey | 0 7 | 0 3 | & brown | | | | | |
| 856 | 7 | ,, ,, blue | 0 8 | 0 3 | 885 | 3 | ,, ,, | black | 0 6 | |
| 857 | 8 | ,, ,, white | 0 8 | 0 2 | BERDIANSK. | | | | | |
| 858 | 50 | ,, obl. blue | | 1 6 | 886 | 10 | kop. rect. | green & blue | | |
| 859 | 1 | scudo vermilion | | 2 6 | BOGUCHAR. | | | | | |
| 1867, arms as last. | | | | | 887 | 5 | kop. obl. | black | | |
| 860 | 2 | c. obl. green | 0 2 | | BOGORODSK. | | | | | |
| 861 | 3 | ,, oval grey | 0 2 | | 888 | 1 | kop. rect. | red | | |
| 862 | 5 | ,, ,, light blue | 0 2 | 0 1 | 889 | 5 | ,, ,, | blue | | |
| 863 | 10 | ,, ,, oct. vermilion | 0 3 | 0 1 | 890 | 10 | ,, ,, | red | | |
| 864 | 20 | ,, ,, circ. deep red | 0 4 | 0 2 | BOROVITCHI. | | | | | |
| 865 | 40 | ,, ,, oct. yellow | | 0 2 | 891 | 5 | kop rect | red brown | 0 6 | |
| 866 | 80 | ,, ,, oval deep rose | | 0 2 | BRONNITZI. | | | | | |
| Russia. | | | | | 892 | 5 | kop. rect. | red | | |
| ADHESIVE STAMPS. | | | | | CHARKOFF. | | | | | |
| 1857-64, arms. | | | | | 893 | 5 | kop. rect. | red | | |
| 867 | 1 | k. rect. yellow | 0 1 | 0 1 | CHEREPOMETZ. | | | | | |
| 868 | 3 | ,, ,, green | 0 3 | 0 1 | 894 | 3 | kop rect | light blue | 0 6 | |
| 869 | 5 | ,, ,, lilac | 0 4 | 0 1 | | | | | | |
| 870 | 5 | ,, ,, blue & black | 0 9 | 0 5 | | | | | | |
| 871 | 10 | ,, ,, brown & blue | 0 8 | 0 1 | | | | | | |
| 872 | 20 | ,, ,, blue & orange | 1 3 | 0 1 | | | | | | |

| | un- used. | used | | un- used. | used. |
|------------------|--------------|--------------|--|--------------|--------------|
| | <i>s. d.</i> | <i>s. d.</i> | | <i>s. d.</i> | <i>s. d.</i> |
| CHERSON. | | | | | |
| 895 | 10 kop. | | | | |
| 896 | 10 " | | | | |
| DMITRIEFF. | | | | | |
| 897 | 3 kop. | | | | |
| DNIÉPROFF. | | | | | |
| 898 | 5 kop. | | | | |
| EGORIEFF. | | | | | |
| 899 | 3 kop | | | | |
| 900 | 3 " | | | | |
| ELIZAVETGRAD. | | | | | |
| 901 | 5 kop. | | | | |
| FATJÉJH. | | | | | |
| 902 | [4 kop.] | | | | |
| 903 | [6 "] | | | | |
| KAZAN. | | | | | |
| 904 | 6 kop. | | | | |
| KIRILOFF. | | | | | |
| 905 | 2 kopsq | | | | |
| KOLOMNA. | | | | | |
| 906 | 5 kop. | | | | |
| KOSELETZ. | | | | | |
| 907 | Rect. | | | | |
| KOTELNITCH. | | | | | |
| 908 | 3 kop. | | | | |
| 909 | 3 " | | | | |
| KROPEEVNA. | | | | | |
| 910 | 3 kop. | | | | |
| LIVNI. | | | | | |
| 911 | 3 kop. | | | | |
| LOUGA. | | | | | |
| 912 | 5 kop. | | | | |
| MALOARCHANGELSK. | | | | | |
| 913 | [5 kop.] | | | | |
| MARIOPOL. | | | | | |
| 914 | 5 kop. | | | | |
| MELITOPOL. | | | | | |
| 915 | 3 kop. | | | | |
| 916 | 3 " | | | | |
| NOLINSK. | | | | | |
| 917 | 2 kop. | | | | |
| NOVGOROD. | | | | | |
| 918 | 5 kop. | | | | |
| PAVLOGRAD. | | | | | |
| 919 | Octagonal | | | | |
| PEERJATIN. | | | | | |
| 920 | 3 kop. | | | | |
| PEREJASLAV. | | | | | |
| 921 | 3 kop. | | | | |
| PODOLSK. | | | | | |
| 922 | 5 kop. | | | | |
| PSKOFF. | | | | | |
| 923 | 5 kop | | | | |
| RIASIN. | | | | | |
| 924 | 2 kop | | | | |
| 924* | 21 " | | | | |
| RJEFF. | | | | | |
| 925 | 2 kop | | | | |
| ROSTOFF-ON-DON. | | | | | |
| 926 | 5 kop. | | | | |
| SAPOJOK. | | | | | |
| 927 | 5 kop. | | | | |
| SARATOFF. | | | | | |
| 928 | 5 kop. | | | | |
| SCHATZ. | | | | | |
| 929 | 3 kop. | | | | |
| SKOPIN. | | | | | |
| 930 | 3 kop. | | | | |
| SOUMMY. | | | | | |
| 931 | 3 kop | | | | |

| | un- used. | used. | | un- used. | used. |
|--|--------------|--------------|---|--------------|--------------|
| | <i>s. d.</i> | <i>s. d.</i> | | <i>s. d.</i> | <i>s. d.</i> |
| TAMDOFF. | | | Finland. | | |
| 922 3 kop. rect. black | | | ADHESIVE STAMPS. | | |
| | | | 1856, <i>arms.</i> | | |
| TCHERN. | | | 938 5 k. obl. oval blue | | 1 6 |
| 923 3 kop. rect. blue | | | 939 10 " " rose | | 0 9 |
| | | | 1860, <i>arms.</i> | | |
| TICHVIN. | | | 940 5 kop. rect. blue | 0 9 | 0 3 |
| 924 5 kop. obl. red | 0 6 | | 941 10 " " rose | 1 0 | 0 3 |
| TVER. | | | | | |
| 925 2 kop. circ. rose & blue | 0 6 | | 1866-67, <i>arms.</i> | | |
| | | | 942 5 pen. rect. brown | 0 2 | 0 1 |
| VALDAL. | | | 943 8 " " green | 0 3 | 0 1 |
| 926 2 kop. rect. black on purple | 0 6 | | 944 10 " " black | 0 4 | 0 2 |
| | | | 945 20 " " blue | 0 6 | 0 2 |
| ENVELOPE STAMPS. | | | 946 40 " " red | 0 9 | 0 2 |
| HOGORODSK. | | | 947 1 mark. " brown | 2 0 | 0 9 |
| 927 5 kop. rect. | | | HELSINGFORS. | | |
| | | | 1866-68, <i>broad diagonal bar.</i> | | |
| TOROPETZ. | | | 948 10 pen. oval red and ground | 0 6 | |
| 928 [6 kop.] rect. | | | 949 10 " blue & brown | 0 4 | |
| 929 [11 "] " | | | | | |
| VABILSK. <i>embossed.</i> | | | TAMMERFORS. | | |
| 930 5 kop. circ. white | | | 1866, <i>broad diagonal bar.</i> | | |
| Russian Steam Navigation Company. | | | 950 12 pen. oval blue & gr | 0 5 | |
| ADHESIVE STAMPS. | | | ENVELOPE STAMPS. | | |
| <i>arms in circle.</i> | | | 1845, <i>arms.</i> | | |
| 1864. | | | 951 10 kop. large oval rose | | |
| 931 6 kop. large sq. blue | 1 0 | | 952 20 " " black | | |
| <i>ship.</i> | | | 1850, <i>arms.</i> | | |
| 1866. | | | 953 5 kop. obl. oval blue | | 1 6 |
| 932 10 paras. rect. rose | 0 3 | | 954 10 " " pink | | 0 6 |
| 933 2 piastres " blue | 1 0 | | 955 20 " " black | | |
| <i>figure.</i> | | | 1860, <i>arms.</i> | | |
| 1868. | | | 956 5 kop. rect. blue | 0 6 | 0 3 |
| 934 1 kop. rect. brown | 0 2 | | 957 10 " " rose | 0 9 | 0 5 |
| 935 3 " " green | 0 8 | | | | |
| 936 5 " " blue | 0 5 | | Livonia. | | |
| 937 10 " " red | 0 9 | | ADHESIVE STAMPS. | | |
| | | | 1863. | | |
| | | | 958 oblong rose | 3 6 | |

| | | un- used. | used. | | | un- used. | used. |
|-----|--|--------------|-------|----------------------------|----------------------------------|--------------|-------|
| | | s. d. | s. d. | | | s. d. | s. d. |
| 959 | oblong green | 0 8 | | 1851, head to right. | | | |
| 960 | rect. rose & green | 0 9 | | 977 | $\frac{1}{2}$ neu. gr. rect grey | | 0 2 |
| | 1864, arms. | | | 978 | 1 " " rose | | 0 2 |
| 961 | rect. rose & green | 0 9 | | 979 | 2 " " blue | | 0 2 |
| | | | | 980 | 2 " " light " | | 0 3 |
| | | | | 981 | 3 " " yellow | | 0 2 |
| | | | | 1854, arms. | | | |
| | Poland. | | | 982 | 3 pfen. rect. green | 0 3 | 0 1 |
| | ADHESIVE STAMP. | | | 1854, head to left. | | | |
| 962 | 10k. rect. blue & red | 1 0 | 0 6 | 983 | $\frac{1}{2}$ neu. gr. rect grey | 0 4 | 0 1 |
| | ENVELOPE STAMPS. | | | 984 | 1 " " rose | 0 5 | 0 1 |
| | 1858, arms large. | | | 985 | 2 " " blue | 0 7 | 0 1 |
| 963 | $[\frac{1}{2}$ kop.] circ. red | | | 986 | 3 " " yellow | 0 9 | 0 1 |
| | arms, small. | | | 987 | 5 " " vermil. | | 0 2 |
| 964 | $[\frac{1}{2}$ kop. circ. red | | | 988 | 10 " " blue | | 0 6 |
| | 1860, arms. | | | 1863, arms. | | | |
| 965 | 3 kop. circ. blue | 0 6 | | 989 | 3 pfen. rect. green | 0 1 | 0 1 |
| 966 | 10 " " black | 1 0 | | 990 | $\frac{1}{2}$ neu. gr. rect. | | |
| | | | | | orange | 0 1 | 0 1 |
| | | | | 991 | 1 " " pink | 0 1 | 0 1 |
| | | | | 992 | 2 " " blue | 0 1 | 0 1 |
| | Sardinia. | | | 992 | 3 " " brown | 0 1 | 0 1 |
| | ADHESIVE STAMPS. | | | 993 | 5 " " lilac | 0 1 | 0 1 |
| | 1851, head in coloured oval. | | | ENVELOPE STAMPS. | | | |
| 967 | 5 c. rect. black | 5 0 | 3 0 | 1859, head. | | | |
| 968 | 20 " " blue | 5 0 | 0 6 | 994 | 1 neu. gr. oval rose | 0 6 | 0 1 |
| 969 | 40 " " lake | 6 6 | 3 6 | 995 | 2 " " blue | 1 0 | 0 5 |
| | 1853, head embossed on coloured paper. | | | 996 | 2 " " yellow | 1 3 | 0 3 |
| 970 | 5 c. rect. green | | | 997 | 5 " " lilac | | 0 4 |
| 971 | 20 " " blue | | 0 6 | 998 | 10 " " green | | 1 6 |
| 972 | 40 " " red | | 2 0 | 1863-65, arms. | | | |
| | 1855, head in white oval. | | | 999 | $\frac{1}{2}$ neu. groct. orange | 0 2 | 0 1 |
| 973 | 5 c. rect. green | 3 6 | | 1000 | 1 " " rose | 0 3 | 0 1 |
| 974 | 20 " " blue | 0 6 | | 1001 | 2 " " blue | 0 4 | 0 2 |
| 975 | 40 " " red | | | 1002 | 3 " " brown | | 0 2 |
| | | | | 1003 | 5 " " mauve | | 0 3 |
| | | | | Schleswig-Holstein. | | | |
| | Saxony. | | | ADHESIVE STAMPS. | | | |
| | ADHESIVE STAMPS. | | | 1850, arms. | | | |
| | 1850, figure. | | | 1003 | 1 sch. rect. blue | 0 6 | |
| 976 | 3 pfen. sq. red | 2 6 | | 1004 | 2 " " rose | 0 6 | |

| | un- used. | used. | | un- used. | used. | | | |
|-------------------------------|-------------------------|------------|------------------------------|--------------|-------------------------------|-------------------------|-----|-----|
| | s. d. | s. d. | | s. d. | s. d. | | | |
| 1865, figure. | | | 1869, head of Milano. | | | | | |
| 1005 | $\frac{1}{2}$ sch. oval | rose | 0 2 | 0 1 | 1032 1 para rect yellow | 0 1 | | |
| 1006 | $\frac{1}{4}$ " " | green | 0 2 | 0 1 | 1033 10 " " brown | 0 2 | | |
| 1007 | $\frac{1}{3}$ " " | mauve | 0 2 | 0 1 | 1034 15 " " orange | 0 2 | | |
| 1008 | 2 " " | blue | 0 2 | 0 1 | 1035 20 " " blue | 0 3 | | |
| 1009 | 4 " " | bistre | 0 2 | 0 1 | 1036 25 " " carmine | 0 3 | | |
| Schleswig. | | | 1037 35 " " pale green | | | 0 5 | | |
| ADHESIVE STAMPS. | | | 1038 40 " " mauve | | | 0 6 | | |
| 1864-65, figure. | | | 1039 50 " " deep green | | | 0 8 | | |
| 1010 | $\frac{1}{2}$ sch. oval | green | 0 2 | | Sicily. | | | |
| 1011 | $\frac{1}{4}$ " " | " " | 0 5 | 0 1 | ADHESIVE STAMPS. | | | |
| 1012 | $\frac{1}{3}$ " " | mauve | 0 2 | 0 1 | 1859, head. | | | |
| 1013 | $\frac{1}{2}$ " " | rose | 0 2 | 0 1 | 1040 $\frac{1}{2}$ grano rect | orange | 0 6 | 0 6 |
| 1014 | 2 " " | blue | 0 2 | 0 1 | 1041 1 " " | brown | 0 4 | 0 6 |
| 1015 | 4 " " | rose | 0 3 | 0 1 | 1042 2 " " | blue | 0 4 | 0 6 |
| 1016 | 4 " " | bistre | 0 2 | 0 1 | 1043 5 " " | red | 0 4 | 0 6 |
| Holstein. | | | 1044 5 " " | | | carmine | 0 6 | |
| ADHESIVE STAMPS. | | | 1045 10 " " | | | deep blue | 0 4 | |
| 1864, value in circle. | | | 1046 20 " " | | | blue-black | 0 5 | |
| 1017 | $1\frac{1}{4}$ sch. sq. | blue | 0 4 | 0 1 | 1047 50 " " | red-brown | 0 6 | |
| 1018 | $1\frac{1}{4}$ " " | blue & red | 0 4 | 0 1 | Spain. | | | |
| 1865-66, figure. | | | ADHESIVE STAMPS. | | | head. | | |
| 1019 | $\frac{1}{2}$ sch. oval | green | 0 2 | | 1850, with date. | | | |
| 1020 | $1\frac{1}{4}$ " " | lilac | 0 4 | 0 3 | 1048 6 c rect. | black | | 0 2 |
| 1021 | $1\frac{1}{4}$ " " | mauve | 0 3 | | 1049 12 " " | lilac | | 2 6 |
| 1022 | $1\frac{1}{3}$ " " | carmine | 0 2 | | 1050 5 rls | red | | 1 0 |
| 1023 | 2 " " | blue | 0 2 | | 1051 6 " " | blue | | |
| 1024 | 4 " " | bistre | 0 2 | | 1052 10 " " | green | | |
| Servia. | | | 1851, with date. | | | 1852, with date. | | |
| ADHESIVE STAMPS. | | | 1053 6 c. rect. | | | black | 1 6 | 0 2 |
| 1866, head of Prince | | | 1054 12 " " | | | violet | | 3 6 |
| Michael. | | | 1055 2 rls | | | red | | |
| 1025 | 1 para rect. | green | 0 1 | | 1056 5 " " | rose | | 1 6 |
| 1026 | 2 " " | brown | 0 2 | | 1057 6 " " | blue | | |
| 1027 | 10 " " | yellow | 0 2 | | 1058 10 " " | green | | |
| 1028 | 20 " " | rose | 0 4 | | 1852, with date. | | | |
| 1029 | 40 " " | blue | 0 7 | | 1059 6 c. rect. | rose | 1 6 | 0 2 |
| 1866, arms. | | | 1060 12 " " | | | violet | | 2 6 |
| 1030 | 1 para rect. | green | 0 3 | | 1061 2 rls. | red | | |
| 1031 | 2 " " | brown | 0 3 | | 1062 5 " " | green | | 1 6 |
| | | | | | 1063 6 c. rect. | blue | | |

| | un- used. | used. | | un- used. | used. |
|---|--------------|-------|---|--------------|-------|
| | s. d. | s. d. | | s. d. | s. d. |
| 1853, with date. | | | | | |
| *1 6 c. rect. red | 1 6 | 0 2 | 1092 12 " " blue | 1 3 | 0 4 |
| *2 12 " " violet | | 2 6 | 1093 19 " " rose | | 1 0 |
| *3 2 rls. " rose | | | 1094 1 rl. rect. chocolate | 1 0 | 0 4 |
| *4 5 " " green | | 1 0 | 1095 2 " " green | 1 3 | 0 1 |
| *5 6 " " blue | | 9 0 | | | |
| 1854, arms with date. | | | 1864, with date. | | |
| 1064 2 c. rect. green | | 8 6 | 1096 2 c. rect. indigo | 0 3 | 0 1 |
| 1065 4 " " rose | 1 6 | 0 3 | 1097 4 " " red | 0 4 | 0 1 |
| 1066 6 " " red | 1 6 | 0 2 | 1098 12 " " green | 1 0 | 0 6 |
| 1067 1 rl. " blue black | | 0 6 | 1099 19 " " mauve | 1 6 | 0 8 |
| 1068 2 " " scarlet | | 0 9 | 1100 1 " " brown | 0 9 | |
| 1069 5 " " green | | 0 9 | 1101 2 " " blue | 1 3 | 0 1 |
| 1070 6 " " blue | | | | | |
| 1855, head in beaded circle, watermark of loops. | | | 1865, with castle or lion in oval at upper angles. | | |
| 1071 2 c. rect. green | | 1 0 | 1102 2 c. rect. rose | 0 3 | 0 2 |
| 1072 4 " " carmine | | 0 4 | 1103 4 " " blue | 0 4 | 0 1 |
| 1073 1 rl. " blue | | 0 8 | 1104 12 " " blue & rose | 0 9 | 0 6 |
| 1074 2 " " chocolate | | 0 5 | 1105 19 " " brown & rose | 1 6 | 0 8 |
| | | | 1106 1 rl. " green | 0 8 | 0 3 |
| 1856, design as last, water- mark of diagonally- crossed lines. | | | 1107 2 " " magenta | 1 0 | 0 3 |
| 1075 2 c. rect. green | | 2 0 | 1866, with castle or lion on shield in upper angles. | | |
| 1076 4 " " rose | | 0 3 | 1108 2 c. rect. rose | 0 2 | 0 1 |
| 1077 1 rl. " blue | | 1 2 | 1109 4 " " blue | 0 3 | 0 1 |
| 1078 2 " " violet | | 0 3 | 1110 12 " " orange | 0 8 | 0 2 |
| | | | 1111 19 " " brown | 1 3 | |
| 1857, design as last with- out watermark. | | | 1112 10 cd'esc. (1 r) grn | 0 6 | 0 2 |
| 1079 2 c. rect. green | 2 0 | 0 9 | 1113 20 " (2,) lilac | 0 9 | 0 1 |
| 1080 4 " " rose | 1 0 | 0 1 | | | |
| 1081 12 " " orange | | 0 4 | with star in circle at each angle. | | |
| 1082 1 rl. " blue | | 0 2 | 1114 20 centimos lilac | 1 0 | 0 1 |
| 1083 2 " " brown | | | | | |
| | | | January, 1867. | | |
| 1860-61, caduceus and anchor in lower spandrels. | | | head surrounded by solid oval inscribed band. | | |
| 1084 2 c. rect. green | 1 6 | 0 4 | 1115 2 c. rect. brown | 0 2 | 0 1 |
| 1085 4 " " orange | 1 6 | 0 1 | 1116 4 " " blue | 0 3 | 0 2 |
| 1086 12 " " carmine | 1 6 | 0 4 | 1117 12 " " orange | 0 8 | |
| 1087 19 " " brown | | 2 6 | 1118 19 " " rose | 1 0 | |
| 1088 1 rl. " blue | 1 3 | 0 4 | 1119 10 " c. d'esc. green | 0 6 | |
| 1089 2 " " lilac | 1 3 | 0 1 | 1120 20 " " lilac | 1 0 | 0 1 |
| | | | July, 1867. | | |
| 1862, with castle or lion in each angle. | | | figure in circle. | | |
| 1090 2 c. rect. indigo | 0 3 | 0 2 | 1121 5 mil. rect. green | 0 1 | 0 1 |
| 1091 4 " " red-brown | 0 4 | 0 1 | 1122 10 " " brown | 0 2 | 0 1 |

| | un- used. | used. | | un- used. | used. |
|--|--------------|-------|--|--------------|-------|
| | s. d. | s. d. | | s. d. | s. d. |
| <i>head surrounded by white oval inscribed band.</i> | | | 1151 3 c rect. bronze | | |
| 1123 25 mil. rect. blue & rose | 0 3 | | — | | |
| 1124 50 " " brown | 0 4 | 0 1 | Sweden. | | |
| 1869. | | | ADHESIVE STAMPS. | | |
| <i>design as last.</i> | | | 1855, <i>arms.</i> | | |
| 1124 25 mil. rect. blue | 0 2 | | 1152 3 sk bc rect green | | 1 0 |
| <i>value in angles.</i> | | | 1153 4 " " lavender | | 0 2 |
| 1125 50 mil rect deep lilac | 0 4 | 0 1 | 1154 4 " " blue | | 0 1 |
| <i>design as in July, 1867.</i> | | | 1155 6 " " grey | | 0 4 |
| 1126 100 mil rect brown | 0 8 | 0 3 | 1156 8 " " yellow | | 0 4 |
| 1127 200 " " green | 1 3 | 0 2 | 1157 24 " " red | | 0 8 |
| 1128 19 c. " brown | | | 1858-66, <i>arms.</i> | | |
| 1870, <i>head of Liberty.</i> | | | 1158 5 ore rect. green | 0 2 | 0 1 |
| 1129 1 mil purple brown | 0 1 | | 1159 9 " " lilac | 0 6 | 0 1 |
| 1130 2 " rect. black | 0 1 | | 1160 12 " " blue | 0 5 | 0 1 |
| 1131 4 " " buff | 0 1 | | 1162 17 " " mauve | 0 7 | 0 1 |
| 1132 10 " " pink | 0 1 | | 1163 20 " vermilion | 0 7 | 0 1 |
| 1133 25 " " mauve | 0 2 | | 1164 24 " orange | | 0 1 |
| 1134 50 " " light blue | 0 3 | | 1165 30 " red brown | | 0 1 |
| 1135 100 " " pale red | 0 6 | | 1166 50 " " lake | | 0 1 |
| 1136 12 " " lake rose | 0 8 | | STOCKHOLM. | | |
| 1137 19 " " green | 1 0 | | 1855-62. | | |
| 1138 200 mill brown | 1 0 | | 1167 oblong black | 0 8 | 0 4 |
| 1139 400 " " sea green | 1 9 | | 1168 " light brown | 0 6 | 0 3 |
| 1140 1 esc. 600 mill lilac | | 1 0 | 1870. | | |
| 1141 2 " " dull blue | | | 1169 3 ore rect. brown | 0 2 | 0 1 |
| OFFICIAL STAMPS. | | | — | | |
| 1854, <i>arms.</i> | | | Switzerland. | | |
| 1142 ½ onza rect yellow | 0 3 | | ADHESIVE STAMPS. | | |
| 1143 1 " " rose | 0 4 | | CANTONAL ADMINISTRATION. | | |
| 1144 4 " " green | 0 4 | | Basle. | | |
| 1145 1 libra " blue | 0 5 | | 1845, <i>dove with letter.</i> | | |
| 1855, <i>arms.</i> | | | 1170 2½ rap rect bl. & rd. | | 3 6 |
| 1146 ½ onza oval yellow | 0 2 | | Geneva. | | |
| 1147 1 " " rose | 0 3 | | 1844, <i>arms (crowned eagle and key.)</i> | | |
| 1148 4 " " green | 0 3 | | 1171 5 c rect blue green | | 4 6 |
| 1149 1 libra " blue | 0 4 | | 1172 5 " yellow green | | 4 0 |
| MADRID. | | | 1173 5 green on white | | 4 0 |
| 1852-53, <i>arms (bear & tree)</i> | | | 1174 5 small rect green | | 4 0 |
| 1150 1 c rect. bronze | 0 6 | | | | |

| | un- used. | used. | | un- used. | used. |
|--|--------------|-------|--|--------------|-------|
| | s. d. | s. d. | | s. d. | s. d. |
| 1175 10 oblong green | | | 1198 1 franc,, grey | | 0 6 |
| ENVELOPE STAMP. | | | 1862-68, <i>Goddess of Liberty.</i> | | |
| 1176 5 c. rect. green | | | [<i>Helvetia-Franco.</i>] | | |
| Zurich. | | | 1199 2 c. rect. grey | 0 1 | 0 1 |
| 1843, <i>large figure, ground of vertical lines.</i> | | | 1200 3 " " black | 0 1 | 0 1 |
| 1177 4 rap. rect. black | | 3 6 | [201 5 " " brown | 0 2 | 0 2 |
| 1178 6 " " " | | 2 0 | 1202 10 " " blue | 0 3 | 0 1 |
| <i>ground of horizontal lines.</i> | | | 1203 10 " " rose | 0 2 | 0 1 |
| 1179 4 rap. rect. black | | 3 6 | 1204 20 " " orange | 0 4 | 0 1 |
| 1180 6 " " " | | 2 0 | 1205 25 " " green | | 0 1 |
| FEDERAL ADMINISTRATION. | | | 1206 30 " " vermilion | | 0 1 |
| 1849, <i>post horn and cross.</i> | | | 1207 30 " " blue | | 0 1 |
| 1181 2½ obl. rap. obl. red and black | | 3 6 | 1208 40 " " green | | 0 1 |
| 1182 4 c " " " | | 5 6 | 1209 50 " " violet | | 0 1 |
| 1183 5 " " " " | | 3 6 | 1210 60 " " bronze | 0 9 | 0 2 |
| 1850, [<i>orts post</i>]. | | | 1211 1 franc gold | 1 3 | 0 2 |
| 1184 2½ rap. rect. black and red | | 1 6 | ENVELOPE STAMPS. | | |
| 1850-51, [<i>post locale</i>]. | | | 1867-68, <i>cross in shield</i> | | |
| 1185 2½ rap. rect. black and red. | | 1 6 | 1212 5 c oval stone | 0 2 | 0 1 |
| 1186 5 c " " " | | 3 6 | 1213 10 " " rose | 0 2 | 0 1 |
| 1850-52, [<i>rayou</i>]. | | | 1213 25 " " green | 0 4 | 0 1 |
| 1187 5 rap. rect. light blue | | 0 3 | 1214 30 " " blue | 0 5 | 0 1 |
| 1188 5 " dark blue | | 0 4 | Turkey. | | |
| 1189 10 " " yellow | | 0 2 | ADHESIVE STAMPS. | | |
| 1190 15 " " rose | | 0 3 | 1863, <i>crescent and sign manual.</i> | | |
| 1191 15 cents rect " | | 0 8 | 1215 20 paras rect yellow | 0 6 | 0 4 |
| 1854-62, <i>Goddess of Liberty.</i> | | | 1216 1 piastre " lilac | 0 9 | 0 5 |
| [<i>Franco.</i>] | | | 1217 2 " " blue | 1 6 | 0 8 |
| 1192 2 rap. rect. grey | 0 4 | 0 3 | 1218 5 " " lake | 2 6 | 0 9 |
| 1193 5 " " brown | | 0 1 | 1865, <i>crescent and star.</i> | | |
| 1194 10 " " blue | | 0 1 | 1219 10 paras rect green | 0 3 | 0 1 |
| 1195 15 " " rose | | 0 1 | 1220 20 " " yellow | 0 4 | 0 1 |
| 1196 20 " " yellow | | 0 1 | 1221 1 piastre, lilac | 0 6 | 0 2 |
| 1197 40 " " green | | 0 1 | 1222 2 " " blue | 1 0 | 0 3 |
| | | | 1223 5 " " pink | 2 0 | 0 5 |
| | | | 1224 25 " vermilion | | 2 0 |
| | | | 1868, <i>crescent and star.</i> | | |
| | | | 1225 10 paras rect lilac | 0 2 | 0 1 |
| | | | 1226 20 " " green | 0 3 | 0 1 |
| | | | 1227 1 piastre,,orange | 0 6 | 0 2 |

| | un- used. | used. | | un- used. | used. |
|--|--------------|--------------|---------------------------------|--------------|--------------|
| | <i>s. d.</i> | <i>s. d.</i> | | <i>s. d.</i> | <i>s. d.</i> |
| 1228 2 piast. rect. red | 1 0 | 0 4 | 1253 1 soldo rect yellow | 3 0 | 1 3 |
| 1229 5 " " blue | 1 9 | 0 6 | 1254 2 " " red | | |
| 1230 25 " " vermilion | | 2 0 | 1255 1 craiza " marone | 1 0 | 0 2 |
| | | | 1256 2 " " blue | 1 3 | 0 2 |
| UNPAID LETTER STAMPS. | | | 1257 4 " " green | 1 3 | 0 2 |
| 1863, crescent and sign manual. | | | 1258 6 " " blue | 1 6 | 0 2 |
| 1231 20 par rect brick red | 0 8 | 0 6 | 1259 9 " " claret | 2 0 | 0 3 |
| 1232 1 piastre " | 1 0 | 0 6 | 1260 60 " " red brown | | |
| 1233 2 " " " | 1 9 | 0 9 | | | |
| 1234 5 " " " | | 1 0 | 1859, Savoy cross on shield. | | |
| 1865, crescent and star. | | | 1261 1 centes rect violet | 0 9 | 0 3 |
| 1235 20 paras rect brown | 0 4 | 0 2 | 1262 5 " " green | 1 0 | 0 4 |
| 1236 1 " " " " | 0 6 | 0 3 | 1263 10 " " brown | 1 3 | 0 2 |
| 1237 2 " " " " | 1 0 | 0 4 | 1264 20 " " blue | 1 6 | 0 2 |
| 1238 5 " " " " | 2 0 | 0 6 | 1265 40 " " red | | 0 4 |
| 1239 25 " " " " | | 2 0 | 1266 80 " " pink | | 0 6 |
| | | | 1267 3 lire " yellow | | |
| ENVELOPE STAMPS. | | | | | |
| 1870, crescent. | | | Wurtemberg. | | |
| 1240 1 piast. oct. yellow | | | ADHESIVE STAMPS. | | |
| 1241 1½ " " brown | | | 1851, figure | | |
| 1242 3 " " orange | | | 1268 1 kr. sq. chamois | 0 5 | 0 3 |
| 1243 6 " " violet | | | 1269 3 " " yellow | 0 9 | 0 1 |
| CONSTANTINOPLE. | | | 1270 6 " " green | 1 0 | 0 1 |
| 1866, crescent and star. [post locale]. | | | 1271 9 " " rose | 1 3 | 0 2 |
| 1244 5 paras rect. blue | 0 2 | | 1272 18 " " purple | 1 6 | 1 0 |
| 1245 20 " " green | 0 4 | 0 2 | | | |
| 1246 40 " " rose | 0 8 | 0 3 | 1857, arms. | | |
| JOURNAL STAMPS. | | | 1273 1 kr. sq. brown | 0 5 | 0 2 |
| 1866 [P. L.] | 0 3 | | 1274 3 " " orange | 0 6 | 0 1 |
| 1247 circular red | 0 3 | | 1275 6 " " green | 0 6 | 0 1 |
| 1248 " green | 0 3 | | 1276 9 " " rose | 1 0 | 0 2 |
| 1249 " blue | 0 3 | | 1277 18 " " blue | 1 6 | 0 3 |
| 1250 " white | | | | | |
| KUSTENDJIE. | | | 1862-68, arms. | | |
| 1867, harbour and train | 0 2 | | 1278 1 kr. sq. green | 0 1 | 0 1 |
| 1251 20 paras rect green | | | 1279 3 " " rose | 0 2 | 0 1 |
| | | | 1280 6 " " blue | 0 5 | 0 1 |
| | | | 1281 7 " " " | 0 4 | 0 1 |
| | | | 1282 9 " " stone | 0 6 | 0 1 |
| | | | 1283 18 " " orange | 1 0 | 0 2 |
| | | | | | |
| TUSCANY. | | | 1869, figure in oval. | | |
| ADHESIVE STAMPS. | | | 1284 1 kr. rect. green | 0 1 | 0 1 |
| 1849, lion and shield. | | | 1285 3 " " rose | 0 2 | 0 1 |
| 1252 1 quattr rect black | 1 0 | 0 6 | 1286 7 " " blue | | 0 1 |
| | | | 1287 14 " " yellow | | 0 2 |

| | | un- used. | used. | | | un- used. | used. | | | | |
|---|--------|--------------|--------------|-------|------|------------------|-----------|------------|--------------|-----|-----|
| | | s. d. | s. d. | | | s. d. | s. d. | | | | |
| RETURNED-LETTER STAMPS. | | | | | | | | | | | |
| [<i>Commission für Retourbriefe.</i>] | | | | | | | | | | | |
| 1288 | square | black | 0 4 | | 1318 | 8d. oct | chocolate | 1 3 | | | |
| ENVELOPE STAMPS. | | | | | | | | | | | |
| 1862-65, <i>figure.</i> | | | | | | | | | | | |
| 1289 | 1 kr. | oct. | green | 0 1 | 0 1 | 1324 | 2 cents. | light brn. | | | |
| 1290 | 3 | " | rose | 0 3 | 0 1 | 1325 | 4 | " | grey | | |
| 1291 | 6 | " | blue | 0 5 | 0 1 | 1326 | 8 | orange | yellow | | |
| 1292 | 9 | " | stone | 0 6 | 0 1 | 1327 | 16 | " | lilac | | |
| | | | | | | | | | | | |
| A S I A . | | | | | | | | | | | |
| Ceylon. | | | | | | | | | | | |
| ADHESIVE STAMPS. | | | | | | | | | | | |
| 1857-67, <i>head.</i> | | | | | | | | | | | |
| 1293 | 4d. | rect. | lilac | 0 2 | | Hong Kong. | | | | | |
| 1294 | 1d. | " | blue | 0 2 | | ADHESIVE STAMPS. | | | | | |
| 1295 | 2d. | " | green | 0 2 | | <i>head.</i> | | | | | |
| 1296 | 2d. | " | yellow | 0 2 | | 1862-4. | | | | | |
| 1297 | 4d. | oct. | carmine | 0 6 | | 1332 | 2 cents | rect | brown | 0 3 | 0 1 |
| 1298 | 4d. | " | rose | 0 3 | | 1333 | 4 | " | blue green | 0 4 | 0 2 |
| 1299 | 5d. | rect | red brown | 0 3 | | 1334 | 6 | " | mauve | 0 6 | 0 2 |
| 1301 | 5d. | " | green | 0 2 | | 1335 | 8 | " | lemon | 1 0 | 0 2 |
| 1302 | 6d. | " | violet brown | 0 8 | | 1336 | 8 | " | orange | 0 8 | 0 2 |
| 1303 | 6d. | " | chocolate | 0 3 | | 1337 | 12 | " | blue | 1 0 | 0 2 |
| 1304 | 8d. | oct. | marone | 0 8 | | 1338 | 18 | " | lilac | 2 0 | 0 5 |
| 1305 | 9d. | " | brown | 0 6 | | 1339 | 24 | " | green | 2 0 | 0 2 |
| 1306 | 10d. | rect. | red | 0 6 | | 1340 | 30 | " | vermilion | 2 6 | 0 2 |
| 1307 | 1s. | " | lilac | 0 4 | | 1341 | 30 | " | mauve | 2 6 | 6 2 |
| 1308 | 1s. | bright | violet | 0 2 | | 1342 | 48 | " | rose | | 0 2 |
| 1309 | 1s. | 9d. | oct. | green | 2 0 | 1343 | 96 | " | black brown | | 0 2 |
| 1310 | 2s. | " | blue | 0 5 | | 1344 | 96 | " | yellow brown | | 0 6 |
| | | | | | | | | | | | |
| 1867-68, <i>head.</i> | | | | | | | | | | | |
| 1311 | 1d. | rect. | light blue | 0 3 | 0 2 | Hungary. | | | | | |
| 1312 | 3d. | " | rose | 0 6 | 0 1 | ADHESIVE STAMPS. | | | | | |
| | | | | | | | | | | | |
| ENVELOPE STAMPS. | | | | | | | | | | | |
| 1861-68, <i>head.</i> | | | | | | | | | | | |
| 1313 | 1d. | oval | blue | 0 3 | 0 2 | 1345 | 2 kr. | rect. | orange | 0 2 | 0 2 |
| 1314 | 2d. | " | green | 0 5 | | 1346 | 3 | " | light green | 0 6 | 0 2 |
| 1315 | 4d. | " | pink | 0 8 | | 1347 | 3 | " | deep green | 0 3 | 0 2 |
| 1316 | 5d. | " | brown | 1 0 | | 1348 | 5 | " | red | 0 4 | 0 2 |
| 1317 | 6d. | circ | chocolate | 1 0 | | 1349 | 10 | " | blue | 0 6 | 0 2 |
| | | | | | | 1350 | 15 | " | light brown | 1 0 | 0 3 |

| | un-used. | used. | | | un-used. | used. |
|------------------------------|----------|-------|----------------------------|--|----------|-------|
| | s. d. | s. d. | | | s. d. | s. d. |
| 1351 15 kr. rect. deep brown | 0 8 | 0 3 | 1373 4 anna rect black | | | 0 1 |
| 1352 25 " " violet | 2 0 | 0 4 | 1374 4 " " green | | | 0 3 |
| JOURNAL STAMPS. | | | 1375 4 " (1866) " | | | 0 1 |
| <i>value in circle.</i> | | | 1376 6 anna 8 pies slate | | | 0 2 |
| 1862. | | | 1377 8 " rect rose | | | 0 1 |
| 1353 1 kr. sq. blue | 0 1 | 0 1 | PROVISIONAL STAMPS. | | | |
| 1354 2 " " brown | 0 2 | 0 1 | 1866. | | | |
| <i>post horn and circle.</i> | | | 1378 6 a largerect lilac | | | 0 5 |
| 1871. | | | ENVELOPE STAMPS. | | | |
| 1355 [1 kr.] rect. red | 0 1 | 0 1 | 1861. | | | |
| ENVELOPE STAMPS. | | | 1379 1/2 anna circ. blue | | | 0 2 |
| <i>head.</i> | | | 1380 1 " " brown | | | 0 3 |
| 1871. | | | — | | | |
| 1356 3 kr. rect. light green | 0 3 | 0 2 | Japan. | | | |
| 1357 5 " " red | 0 4 | 0 2 | <i>oriental device.</i> | | | |
| 1358 10 " " blue | 0 6 | 0 3 | 1871. | | | |
| 1359 15 " " brown | 1 0 | 0 4 | 1381 1/2 tempo sq. brown | | 0 4 | |
| POST CARD. | | | 1382 1 " " indigo | | 0 8 | |
| 1871. | | | 1383 2 tempoes red | | 0 10 | |
| <i>large portrait.</i> | | | 1384 3 " " green | | 1 3 | |
| 1360 2 kr. obl. yellow | 0 3 | | — | | | |
| <i>small portrait.</i> | | | Shanghai. | | | |
| 1361 2 kr. obl. yellow | 0 2 | | ADHESIVE STAMPS. | | | |
| — | | | 1865, <i>dragon.</i> | | | |
| India. | | | 1385 1 clargerect blue | | 0 4 | |
| ADHESIVE STAMPS. | | | 1386 2 " " black | | 0 5 | |
| 1854, <i>head.</i> | | | 1387 3 " " chocolate | | 0 6 | |
| 1362 1/2 anna rect. red | 2 0 | | 1388 4 " " yellow | | 0 7 | |
| 1363 1/2 " " blue | 1 6 | 0 3 | 1389 6 " " chocolate | | 0 9 | |
| 1364 1 " " red | 2 0 | 0 3 | 1390 8 " " green | | 1 0 | |
| 1365 2 " " green | 2 0 | 0 3 | 1391 12 " " chocolate | | 1 3 | |
| 1366 4 " oct. red | | 0 3 | 1392 16 " " red | | 1 9 | |
| 1862-67, <i>head.</i> | | | 1866, <i>dragon.</i> | | | |
| 1367 8 pies oct. lilac | 0 2 | 0 2 | 1393 2 cents rect. rose | | 0 4 | |
| 1368 1/2 anna rect. blue | 0 2 | 0 1 | 1394 4 " " violet | | 0 8 | |
| 1369 1 " " brown | 0 3 | 0 1 | 1395 8 " " blue | | 1 0 | |
| 1370 2 " " pink | | 0 6 | 1396 16 " " green? | | 2 0 | |
| 1371 2 " " yellow | | 0 1 | 1866, <i>dragon.</i> | | | |
| 1372 2 " " orange | | 0 1 | 1397 1 candrect brown | | 0 3 | |
| | | | 1398 3 " " orange | | 0 6 | |
| | | | 1399 6 " " grey | | 0 9 | |

| | un- used. | used. | | un- used. | used. |
|---|--------------|-------|--|--------------|-------|
| | s. d. | s. d. | | s. d. | s. d. |
| 1400 12cand. rect. slate | 1 6 | | 1426 4d. triangular red | | |
| — | | | 1863-68, <i>figure of Hope seated.</i> | | |
| Straits Settlements. | | | 1427 1d. rect. red | 0 2 | 0 1 |
| ADHESIVE STAMPS. | | | 1428 4d. " blue | 0 7 | 0 1 |
| 1867, <i>Indian stamps sur- charged with crown and value.</i> | | | 1429 4d. " lilac & red | 0 7 | 0 1 |
| 1401 3 half-cents. rect. | | | 1430 6d. " lilac | 10 | 0 2 |
| | 0 4 | 0 3 | 1431 1s. " green | 1 6 | 0 1 |
| 1402 2 cents rect. brown | 0 6 | 0 3 | 1432 5s. " orange | 6 6 | 1 0 |
| 1403 3 " " " | 0 6 | 0 3 | — | | |
| 1404 4 " " " | 0 7 | 0 3 | Egypt. | | |
| 1405 6 " " orange | 0 9 | 0 3 | ADHESIVE STAMPS. | | |
| 1406 8 " " " | | 0 3 | 1865, <i>various ornamental designs.</i> | | |
| 1407 12 " " green | | 0 6 | 1433 5 paras rect green | 0 2 | 0 2 |
| 1408 24 " " rose | | 0 4 | 1434 10 " " brown | 0 3 | 0 2 |
| 1409 32 " " orange | | 0 4 | 1435 20 " " blue | 0 5 | 0 3 |
| 1868, <i>head.</i> | | | 1436 1 piast. light rose | 0 8 | 0 3 |
| 1410 2 cents rect brown | 0 3 | 0 1 | 1437 2 " " orange | | 0 4 |
| 1411 4 " " rose | 0 4 | 0 2 | 1438 5 " " rose | | 0 9 |
| 1412 6 " " lilac | 0 6 | 0 1 | 1439 10 " " slate | | 1 3 |
| 1413 8 " " orange | 0 8 | 0 2 | 1867, <i>pyramid and sphinx.</i> | | |
| 1414 12 " " blue | 1 0 | 0 2 | 1440 5 paras obl yellow | 0 2 | 0 1 |
| 1415 24 " " green | | 0 2 | 1441 10 " " grey | 0 3 | 0 1 |
| 1416 32 " " vermilion | | 0 2 | 1442 20 " " green | 0 4 | 0 2 |
| 1417 96 " " grey | | 0 3 | 1443 1 piastre, red | 0 6 | 0 2 |
| — | | | 1444 2 " " blue | 1 0 | 0 2 |
| A F R I C A . | | | 1445 5 " " brown | 2 0 | 0 5 |
| Cape of Good Hope. | | | 1872. | | |
| ADHESIVE STAMPS. | | | 1446 5 paras red-brown | 0 2 | |
| 1857-63, <i>figure of Hope reclining.</i> | | | 1447 10 " bright mauve | | |
| 1418 1d. triangular red | 0 4 | 0 3 | 1448 20 " Prussian blue | | |
| 1419 4d. " blue | 0 8 | 0 4 | 1449 1 piastre rosy red | | 0 6 |
| 1420 6d. " lilac | | 0 5 | 1450 2 " deep chromic yellow | | |
| 1421 1s. " dark green | | 0 6 | 1451 2½ " purple | | |
| 1422 1s. " light green | | 0 8 | 1452 5 " emerald green | | |
| — | | | Gambia. | | |
| 1860, <i>as last, but printed from wood-blocks.</i> | | | ADHESIVE STAMPS. | | |
| 1423 1d. triangular red | | 3 6 | 1869, <i>head.</i> | | |
| 1424 1d. " blue | | | 1453 4d. rect. brown | 0 8 | 0 4 |
| 1425 4d. " " | | 3 6 | 1454 6d. " blue | 1 0 | 0 5 |

| | | | un- used. | used. | | | | un- used. | used. |
|-----------------------------|---------------------|------------|--------------|-------|------|----------|------------|--------------|-------|
| | | | s. d. | s. d. | | | | s. d. | s. d. |
| 1506 | 3d. rect. | blue | 0 6 | 0 1 | 1526 | 1d. rect | vermillion | 0 2 | 0 1 |
| 1507 | 6d. " | grey | 1 9 | 0 5 | 1527 | 6d. " | green | | 0 2 |
| 1508 | 6d. " | mauve | 1 0 | 0 2 | | | | | |
| 1509 | 1s. " | green | 1 9 | 0 4 | | | | | |
| Orange Free State. | | | | | | | | | |
| ADHESIVE STAMPS. | | | | | | | | | |
| 1868, | arms (orange tree.) | | 0 3 | 0 2 | | | | | |
| 1510 | 1d. rect. | brown | | 0 4 | | | | | |
| 1511 | 6d. " | rose | | 0 5 | | | | | |
| 1512 | 1s. " | orange | | | | | | | |
| St. Helena. | | | | | | | | | |
| ADHESIVE STAMPS. | | | | | | | | | |
| 1857-68, head. | | | | | | | | | |
| 1513 | 1d. rect. | red | 0 3 | 0 2 | | | | | |
| 1514 | 2d. " | yellow | 0 4 | 0 3 | | | | | |
| 1515 | 3d. " | purple | 0 6 | 0 4 | | | | | |
| 1516 | 4d. " | rose | 0 8 | 0 4 | | | | | |
| 1517 | 6d. " | blue | 1 0 | 0 7 | | | | | |
| 1518 | 1s. " | green | 1 6 | 0 4 | | | | | |
| 1519 | 5s. " | orange | 6 0 | 1 6 | | | | | |
| Sierra Leone. | | | | | | | | | |
| ADHESIVE STAMP. | | | | | | | | | |
| 1861, head. | | | | | | | | | |
| 1520 | 6d. rect. | lilac | 1 0 | 0 6 | | | | | |
| South African Republic. | | | | | | | | | |
| ADHESIVE STAMPS. | | | | | | | | | |
| 1870, arms. | | | | | | | | | |
| 1521 | 1d. rect. | red | 0 3 | | | | | | |
| 1522 | 3d. " | mauve | 0 6 | | | | | | |
| 1523 | 6d. " | blue | 1 0 | | | | | | |
| 1524 | 1s. " | green | 1 0 | | | | | | |
| Argentine Republic. | | | | | | | | | |
| ADHESIVE STAMPS. | | | | | | | | | |
| CONFEDERATION. | | | | | | | | | |
| 1861, arms, small figures. | | | | | | | | | |
| 1525 | 5 c. rect. | red | | | 0 6 | | | 0 6 | |
| 1529 | 10 " | green | 1 0 | | 0 9 | | | 0 9 | |
| 1530 | 15 " | blue | 1 6 | | 0 9 | | | 0 9 | |
| REPUBLIC. | | | | | | | | | |
| 1862, arms in circle. | | | | | | | | | |
| 1531 | 5 c. rect. | rose | 0 6 | | 0 3 | | | 0 3 | |
| 1532 | 10 " | green | 1 0 | | 0 8 | | | 0 8 | |
| 1533 | 15 " | blue | 1 6 | | 1 3 | | | 1 3 | |
| 1861, head to left in oval. | | | | | | | | | |
| 1534 | 5 c. rect. | rose | 0 6 | | 0 2 | | | 0 2 | |
| 1535 | 10 " | green | 1 0 | | 0 4 | | | 0 4 | |
| 1536 | 15 " | blue | 1 6 | | 0 6 | | | 0 6 | |
| 1867, head to right. | | | | | | | | | |
| 1537 | 5 c. rect. | rose | 0 6 | | 0 2 | | | 0 2 | |
| 1538 | 10 " | green | 1 0 | | 0 3 | | | 0 3 | |
| head to left in lozenge. | | | | | | | | | |
| 1539 | 15 c. rect. | blue | 1 3 | | 0 4 | | | 0 4 | |
| CORRIENTES. | | | | | | | | | |
| 1856-64, head of liberty. | | | | | | | | | |
| 1540 | 1rl M.C. rect | blue | 7 6 | | 4 6 | | | 4 6 | |
| value not indicated. | | | | | | | | | |
| 1541 | [3 c.] rect. | blue | 6 6 | | 3 6 | | | 3 6 | |
| Azores. | | | | | | | | | |
| ADHESIVE STAMPS. | | | | | | | | | |
| 1868, Portuguese stamps | | | | | | | | | |
| surcharged with name. | | | | | | | | | |
| 1542 | 5 reis. rect. | black | 0 1 | | 0 1 | | | 0 1 | |
| 1543 | 10 " | yellow | 0 2 | | 0 2 | | | 0 2 | |
| 1544 | 20 " | ochre | 0 3 | | 0 3 | | | 0 3 | |
| 1545 | 25 " | rose | 0 4 | | 0 2 | | | 0 2 | |
| 1546 | 50 " | green | 0 6 | | 0 3 | | | 0 3 | |
| AMERICA. | | | | | | | | | |
| Antigua. | | | | | | | | | |
| ADHESIVE STAMPS. | | | | | | | | | |
| 1862-65, head. | | | | | | | | | |
| 1525 | 1d. rect. | red violet | 0 4 | 0 1 | | | | | |

| | un- used. | used. | | un- used. | used. |
|-----------------------------------|--------------|--------------|--|--------------|--------------|
| | <i>s. d.</i> | <i>s. d.</i> | | <i>s. d.</i> | <i>s. d.</i> |
| 1547 80 reis rect orange | 0 9 | 0 3 | 1844-46, <i>italic figures.</i> | | |
| 1548 100 " " lilac | 1 0 | 0 4 | 1568 10 reis obl. black | 0 9 | 0 6 |
| 1549 120 " " blue | 1 8 | 0 2 | 1569 30 " " " | 0 9 | 0 6 |
| 1550 240 " " lilac | | 0 8 | 1570 60 " " " | 1 0 | 0 4 |
| | | | 1571 90 " " " | 1 6 | 0 9 |
| | | | 1572 180 " " " | | |
| | | | 1573 300 " " " | | |
| | | | 1574 600 " " " | | |
| Bahamas. | | | 1850-54, <i>small Roman figures.</i> | | |
| ADHESIVE STAMPS | | | | | |
| 1859-63, <i>head.</i> | | | | | |
| 1551 1d. rect. carmine | 0 3 | 0 2 | 1575 10 reis obl. black | 0 4 | 0 4 |
| 1552 4d. " rose | 0 8 | 0 3 | 1576 20 " " " | 0 5 | 0 3 |
| 1553 6d. " mauve | 1 0 | 0 3 | 1577 30 " " " | 0 3 | 0 2 |
| 1554 1s. " green | 1 9 | 0 3 | 1578 60 " " " | 0 6 | 0 2 |
| | | | 1579 90 " " " | 0 9 | 0 4 |
| | | | 1580 180 " " " | 1 3 | 0 6 |
| | | | 1581 280 " vermilion | | 0 9 |
| | | | 1582 300 " black | | 0 8 |
| | | | 1583 430 " orange | | 1 3 |
| | | | 1584 600 " black | | 0 9 |
| Barbados. | | | 1866, <i>head.</i> | | |
| ADHESIVE STAMPS. | | | | | |
| 1852, <i>figure of Britannia.</i> | | | | | |
| <i>value not indicated.</i> | | | | | |
| 1555 [1d.] rect. green | 0 2 | 0 1 | 1585 10 reis rect. red | 0 2 | 0 1 |
| 1556 [1d.] " blue | 0 3 | 0 1 | 1586 20 " " lilac | 0 3 | 0 2 |
| 1557 [4d.] " red | 0 9 | 0 3 | 1587 50 " " black | 0 6 | 0 3 |
| 1558 [4d.] " brick red | 0 8 | 0 1 | 1588 80 " " lilac | 0 8 | 0 3 |
| | | | 1589 100 " " green | 0 9 | 0 3 |
| | | | 1590 200 " " black | | 0 3 |
| | | | 1591 500 " " orange | | 0 4 |
| 1862-66, <i>value indicated.</i> | | | NEWSPAPER STAMPS. | | |
| 1559 6d. rect. red | 1 0 | 0 2 | 1854, <i>figure.</i> | | |
| 1560 6d. " vermilion | 10 | 0 2 | 1592 10 reis obl. blue | 0 2 | 0 2 |
| 1561 1s. " black | 1 9 | 0 1 | 1593 " " " " | 0 3 | 0 2 |
| | | | ENVELOPE STAMPS. | | |
| | | | 1867, <i>head.</i> | | |
| | | | 1594 100 reis oval green | 0 9 | |
| | | | 1595 200 " " black | 1 3 | |
| | | | 1596 300 " vermilion | 2 0 | |
| Bermuda. | | | British Columbia and Vancouver Island. | | |
| ADHESIVE STAMPS. | | | 1861, <i>head.</i> | | |
| 1865, <i>head.</i> | | | 1597 2½ rect. pink | | |
| 1562 1d. rect. red | 0 3 | 0 2 | 0 6 | 0 4 | |
| 1563 2d. " blue | 0 4 | 0 2 | | | |
| 1564 6d. " lilac | 1 0 | 0 3 | | | |
| 1565* 1s. " green | 1 9 | 0 5 | | | |
| Brazil. | | | | | |
| ADHESIVE STAMPS. | | | | | |
| 1843, <i>large Roman figures</i> | | | | | |
| 1566 30 reis oval black | | | | | |
| 1566 60 " " " | | | | | |
| 1567 90 " " " | | | | | |

| | un- used. | used. | | un- used. | used. | | | | | |
|---------------------------------|-----------------|-----------|----------------------------|--------------------|-------------------------------|----------------------------------|-----------|-----------|-----|-----|
| | s. d. | s. d. | | s. d. | s. d. | | | | | |
| BRITISH COLUMBIA. | | | 1626 | 4 c large obl blue | | | | | | |
| 1865-69, <i>large letter V.</i> | | | 1862, <i>type printed,</i> | | | | | | | |
| 1598 | 3d. rect. | blue | 0 6 | 0 3 | <i>curious borders.</i> | | | | | |
| 1599 | 2 cents rect | brown | 0 3 | 0 2 | 1627 | 1 c. rect. | pink | | 1 0 | |
| 1600 | 5 " " | vermilion | 0 6 | 0 3 | 1628 | 2 " " | yellow | | 1 0 | |
| 1601 | 10 " " | rose | 1 0 | 0 6 | 1629 | 4 " " | blue | | 1 6 | |
| 1602 | 25 " " | orange | 2 0 | 0 8 | | | | | | |
| 1603 | 50 " " | mauve | 3 0 | 0 9 | | | | | | |
| 1604 | 1 dollar | green | 6 6 | 1 3 | | | | | | |
| VANCOUVER ISLAND. | | | British Honduras. | | | | | | | |
| 1865, <i>head.</i> | | | ADHESIVE STAMPS. | | | | | | | |
| 1605 | 5 cents rect. | red | 1 0 | 0 4 | 1865, <i>head.</i> | | | | | |
| 1606 | 10 " " | blue | 1 9 | 0 6 | 1630 | 1d. rect. | blue | 0 3 | 0 2 | |
| | | | | | | 1631 | 6d. " " | rose | | 0 4 |
| | | | | | | 1632 | 1s. " " | green | | 0 8 |
| British Guana. | | | | | | | | | | |
| ADHESIVE STAMPS. | | | | | | | | | | |
| 1850, <i>value in centre.</i> | | | | | | Buenos Ayres. | | | | |
| 1607 | 4 c circular | yellow | | | ADHESIVE STAMPS. | | | | | |
| 1608 | 8 " " | green | | | 1858-59, <i>steamship.</i> | | | | | |
| 1609 | 12 " " | blue | | | 1633 | 1 peso obl. | brown | | | |
| 1850-51, <i>ship in shield.</i> | | | | | | 1634 | 1 " " | blue | | |
| 1610 | 1 c la rect. | magenta | | | 1635 | 2 " " | " " | | | |
| 1611 | 4 " " | blue | | | 1636 | 3 " " | green | | | |
| 1853, <i>ship in oval.</i> | | | | | | 1637 | 4 " " | red | | |
| 1612 | 1 c. rect. | red | 6 0 | 6 0 | 1638 | 4 rls. " " | brown | | | |
| 1613 | 4 " " | blue | | 5 0 | 1639 | 5 pesos " " | orange | | | |
| 1860, <i>ship in oval.</i> | | | | | | 1859-62, <i>head of Liberty.</i> | | | | |
| 1614 | 1 c. rect. | rose | | 1 6 | 1640 | 1 peso obl. | blue | 1 0 | 0 6 | |
| 1615 | 1 " " | brown | | 2 0 | 1641 | 1 " " | rose | 1 3 | 0 8 | |
| 1616 | 1 " " | black | 0 2 | 0 1 | 1642 | 2 " " | blue | 1 6 | 0 6 | |
| 1617 | 2 " " | orange | 0 3 | 0 1 | 1643 | 2 " " | scarlet | 3 0 | 1 6 | |
| 1618 | 4 " " | blue | 0 4 | 0 2 | 1644 | 4 rls. " " | green | 3 0 | 1 6 | |
| 1619 | 8 " " | rose | 0 8 | 0 2 | | | | | | |
| 1620 | 12 " " | lilac | | 0 2 | | | | | | |
| 1621 | 24 " " | green | | 0 3 | | | | | | |
| 1863, <i>ship in circle.</i> | | | | | | Canada. | | | | |
| 1622 | 6 c. large rect | blue | 0 6 | 0 3 | ADHESIVE STAMPS. | | | | | |
| 1623 | 24 " " | green | | 0 3 | 1856, <i>head of Queen.</i> | | | | | |
| 1624 | 48 " " | red | | 0 4 | 1645 | ½ d. rect. | rose | | 0 8 | |
| PROVISIONAL STAMPS. | | | | | | <i>beaver.</i> | | | | |
| 1856, <i>ship.</i> | | | | | | 1646 | 3d. obl. | vermilion | 1 6 | 0 6 |
| 1625 | 4 c large obl | magenta | | | <i>head of Prince Albert.</i> | | | | | |
| | | | | | | 1647 | 6d. rect. | purple | | 3 0 |

| | un-used. | used. | | un-used. | used. |
|-------------------------------|----------|-------|--------------------------------|----------|-------|
| | s. d. | s. d. | | s. d. | s. d. |
| 1861-70. | | | | | |
| <i>head of Queen.</i> | | | 1667 1/2 c. small rect. black | 0 1 | 0 1 |
| 1648 6dstg 7 1/2 cy green | 5 0 | 3 0 | 1668 1 " " orange | 0 1 | 0 1 |
| <i>head of Cartier.</i> | | | 1669 3 " " red | 0 3 | 0 1 |
| 1649 10d. rect. blue | | 1 6 | 1670 2 " " green | | 0 2 |
| <i>head of Queen.</i> | | | 1671 6 " " brown | | 0 2 |
| 1650 12d. rect. black | | | | | |
| 1860-64. | | | | | |
| <i>head of Queen.</i> | | | | | |
| 1651 1 cent rect. rose | 0 1 | 0 1 | Chili. | | |
| 1652 2 " " " | 0 2 | 0 1 | ADHESIVE STAMPS. | | |
| <i>beaver.</i> | | | | | |
| 1653 5 cents obl verm. | 0 4 | 0 1 | 1861, head of Columbus. | | |
| <i>head of Prince Albert.</i> | | | 1672 1 cent rect. yellow | 0 3 | 0 3 |
| 1654 10 c. rect. brown | 1 0 | 0 2 | 1673 5 " " red | 0 8 | 0 3 |
| 1655 10 " " purple-brown | 0 9 | 0 1 | 1674 10 " " blue | 1 0 | 0 4 |
| <i>head of Queen.</i> | | | 1675 20 " " green | 2 0 | 0 9 |
| 1656 12 1/2 c. rect. green | 0 9 | 0 1 | 1867-68. | | |
| <i>head of Cartier.</i> | | | 1676 1 cent rect orange | 0 2 | 0 2 |
| 1657 17 cents rect. blue | 1 3 | 0 2 | 1677 2 " " black | 0 3 | 0 2 |
| ENVELOPE STAMPS. | | | | | |
| 1862, head of Queen. | | | | | |
| 1658 5 coval vermilion | 1 0 | 1 0 | ENVELOPE STAMP. | | |
| 1659 10 " chocolate | 1 6 | 1 0 | 1871. | | |
| DOMINION OF CANADA. | | | | | |
| <i>head of Queen.</i> | | | | | |
| 1868 | | | | | |
| 1660 1 cent large rect. red | 0 1 | 0 1 | Confederate States of America. | | |
| 1661 1 " " orange | 0 1 | 0 1 | ADHESIVE STAMPS. | | |
| 1662 2 " " green | 0 2 | 0 1 | 1863-65, | | |
| 1663 3 " " vermilion | 0 3 | 0 1 | 1682 2 cents rect. red | 0 6 | |
| 1664 6 " " brown | 0 6 | 0 1 | 1683 5 " " blue | 0 2 | |
| 1665 12 1/2 " " blue | 1 0 | 0 1 | 1684 10 " " " | 0 2 | |
| 1666 15 " " mauve | 1 3 | 0 2 | 1685 20 " " green | 0 6 | |
| NEW ORLEANS. | | | | | |
| | | | 1686 2 cents rect. red | 1 6 | |

| | un- used. s. d. | used. s. d. | | un- used. s. d. | used. s. d. |
|--|-----------------------|----------------|--|-----------------------|----------------|
| 1687 2 " " blue | 1 6 | | 1707 1 " " blue | 1 0 | |
| 1688 5 " " brown | 2 0 | | 1708 2 " " vermilion | 1 6 | 0 8 |
| — | | | 1866, <i>design as last,</i> <i>dated.</i> | | |
| Costa Rica. | | | 1709 $\frac{1}{2}$ rl. pl. rect. black | 0 8 | |
| ADHESIVE STAMPS. | | | 1710 5 c. rect. lilac | 0 9 | |
| 1863-64, <i>sea view.</i> | | | 1711 10 " " blue | 1 0 | |
| 1689 $\frac{1}{2}$ rl. rect. blue | 0 9 | 0 6 | 1712 20 " " green | 1 6 | |
| 1690 2 " " scarlet | 1 6 | 0 6 | 1713 40 " " rose | 2 6 | |
| 1691 4 " " green | 3 6 | 1 6 | 1867, <i>design as last,</i> <i>dated.</i> | | |
| 1692 1 peso " orange | 7 0 | 2 0 | 1714 5 c. rect. lilac | 0 8 | |
| — | | | 1715 10 " " blue | 1 0 | |
| Cuba. | | | 1716 20 " " green | 1 6 | 0 3 |
| ADHESIVE STAMPS. | | | 1717 40 " " rose | 2 6 | |
| 1855, <i>head in beaded</i> <i>circle, watermark of</i> <i>loops.</i> | | | 1868, <i>head in circle,</i> <i>dated.</i> | | |
| 1693 $\frac{1}{2}$ rl. pl. rect. blue | | 0 9 | 1718 5 c. rect. lilac | 0 5 | |
| 1694 1 " " green | | 1 0 | 1719 10 " " blue | 0 8 | 0 1 |
| 1695 2 " " carmine | | 2 0 | 1720 20 " " green | 1 0 | 0 2 |
| 1696 " " ($Y\frac{1}{4}$) " | | 2 0 | 1721 40 " " rose | 2 0 | |
| 1856, <i>design as last,</i> <i>watermark of diagonally-</i> <i>crossed lines.</i> | | | 1869, <i>design as last,</i> <i>dated.</i> | | |
| 1697 $\frac{1}{2}$ rl. pl. rect. blue | | 0 9 | 1722 5 c. rect. rose | 0 4 | |
| 1698 1 " " green | | 1 6 | 1723 10 " " brown | 0 6 | |
| 1699 2 " " red | | 3 6 | 1724 20 " " orange | 1 0 | 0 2 |
| | | | 1725 40 " " lilac | 2 0 | |
| 1857, <i>design as last,</i> <i>without watermark.</i> | | | 1870, <i>head of Liberty.</i> | | |
| 1700 $\frac{1}{2}$ rl. pl. rect. blue | 0 8 | 0 2 | 1726 5 c. rect. blue | 0 4 | |
| 1701 1 " " green | 1 0 | 0 3 | 1727 10 " " green | 0 6 | 0 1 |
| 1702 2 " " red | 2 0 | 0 6 | 1728 20 " " brown | 1 0 | 0 2 |
| 1703 2 " " ($Y\frac{1}{4}$) " | 2 0 | | 1729 40 " " pink | 2 0 | |
| 1862, <i>caduceus and</i> <i>anchor in lower</i> <i>spandrels.</i> | | | — | | |
| 1704 $\frac{1}{4}$ rl. pl. rect. black | 1 0 | | Danish West Indies. | | |
| 1864, <i>star in circle at</i> <i>each angle, undated</i> | | | ADHESIVE STAMPS. | | |
| 1705 $\frac{1}{2}$ rl. pl. rect. black | 1 6 | | 1855-63, <i>sword, sceptre,</i> <i>and crown.</i> | | |
| 1706 $\frac{1}{2}$ " " green | 0 9 | | 1730 3 c. square light red | 1 0 | |
| | | | 1731 3 " " deep red | 0 6 | 0 3 |
| | | | 1732 3 " " pink | 0 4 | 0 2 |

| | un- used. s. d. | used. s. d. | | un- used. s. d. | used. s. d. |
|--|-------------------------------|----------------|--|--------------------------------------|----------------|
| Ecuador. | | | 1861, <i>black on coloured paper.</i> | | |
| ADHESIVE STAMPS. | | | | | |
| 1865-66, <i>arms.</i> | | | 1753 $\frac{1}{2}$ rl. rect. light brown | | 1 9 |
| 1733 | $\frac{1}{2}$ real rect. blue | 1 0 | 0 9 | | |
| 1734 | 1 " " yellow | 2 6 | 2 0 | 1754 1 " " green | 0 8 |
| 1735 | 1 " " green | 1 6 | 1 0 | 1755 2 " " pink | 0 6 |
| 1736 | 4 " " pale red | 4 0 | 2 0 | 1756 4 " " yellow | 0 6 |
| | | | | 1757 8 " " brown | 4 6 |
| Grenada. | | | 1863, <i>colour on coloured paper.</i> | | |
| ADHESIVE STAMPS. | | | | | |
| 1860-67, <i>head.</i> | | | 1758 4 rls. rect. red on yellow | | 2 6 |
| 1737 | 1d. rect. green | 0 3 | 0 1 | 1759 8 " " green on brown | 1 0 |
| 1738 | 6d. " " lake | 1 3 | 0 8 | | |
| 1739 | 6d. " " orange red | 1 0 | 0 2 | | |
| Honduras. | | | 1864-65, <i>eagle.</i> | | |
| ADHESIVE STAMPS. | | | | | |
| 1865, <i>arms.</i> | | | 1760 3 c. rect brown | 2 6 | |
| 1740 | 2 rls. rect. blue | 2 0 | | 1761 $\frac{1}{2}$ rl. " " mauve | 1 3 |
| 1741 | 2 " " rose | 2 0 | 1 0 | 1762 1 " " blue | 1 6 |
| | | | | 1763 2 " " yellow | 1 9 |
| | | | | 1764 4 " " green | 2 3 |
| | | | | 1765 8 " " pink | 0 6 |
| Jamaica. | | | 1866, <i>head of maximilian.</i> | | |
| ADHESIVE STAMPS. | | | | | |
| 1851-63, <i>head.</i> | | | 1766 7 c. rect. brown | | 3 6 |
| 1742 | 1d. rect. blue | 0 2 | 0 1 | 1767 7 " " grey | 3 6 |
| 1743 | 2d. " " rose | 0 4 | 0 1 | 1768 7 " " mauve | 3 0 |
| 1744 | 3d. " " green | 0 6 | 0 1 | 1769 13 " " blue | 3 0 |
| 1745 | 4d. " " orange | 0 8 | 0 1 | 1770 25 " " yellow | 1 6 |
| 1746 | 6d. " " lilac | 1 0 | 0 1 | 1771 25 " " orange | 1 0 |
| 1747 | 1s. " " brown | 1 9 | 0 1 | 1772 25 " " brown | 1 0 |
| | | | | 1773 50 " " green | 1 6 |
| Mexico. | | | 1867-68, <i>head of Hidalgo as on the 1857-63 issues, but name of state stamped in Gothic not block letters.</i> | | |
| ADHESIVE STAMPS. | | | | | |
| 1857, <i>head of Hidalgo. colour on white paper:</i> | | | 1774 $\frac{1}{2}$ real rect. blue | | |
| 1748 | $\frac{1}{2}$ real rect. blue | | 1 0 | 1775 $\frac{1}{2}$ " " black on grey | 1 6 |
| 1749 | 1 " " yellow | | 0 8 | 1776 1 " " blue | |
| 1750 | 2 " " green | | 0 6 | 1777 2 " " green | 1 6 |
| 1751 | 4 " " red | | 2 6 | 1778 2 " " black on pink | 1 6 |
| 1752 | 8 " " violet | | | | |

| | | un- used. s. d. | used. s. d. | | un- used. s. d. | used. s. d. |
|---------------------------------|------------|-----------------------|----------------|--------------------|-----------------------|----------------|
| 1779 | 4 | | | rose | | |
| 1780 | 4 | | | red on yellow | 0 8 | |
| 1781 | 4 | | | red on white | | |
| 1782 | 8 | | | green on brown | | |
| 1783 | 8 | | | blk. " " | | |
| 1868, head of <i>Fuarez</i> . | | | | | | |
| 1784 | 6 c. | 0 8 | 0 6 | blk. on brown | | |
| 1785 | 12 | 1 3 | 0 5 | green | | |
| 1786 | 25 | 2 0 | 0 6 | blue on pink | | |
| 1787 | 50 | | 0 6 | black on yellow | | |
| 1788 | 100 | | 0 8 | brown | | |
| Monte Video. | | | | | | |
| ADHESIVE STAMPS. | | | | | | |
| 1856, arms. | | | | | | |
| [<i>Diligencia</i> .] | | | | | | |
| 1789 | 60 c. | | | rect. blue | | |
| 1790 | 80 | 0 9 | | green | | |
| 1791 | 1 cl. | 0 9 | | red | | |
| 1859, arms. | | | | | | |
| 1792 | 60 c. | 0 8 | 0 4 | obl. brown | | |
| 1793 | 80 | 1 0 | 0 8 | orange | | |
| 1794 | 100 | 1 3 | 0 9 | rose | | |
| 1795 | 120 | 1 0 | 0 6 | blue | | |
| 1796 | 180 | 1 9 | 1 6 | green | | |
| 1797 | 240 | 2 0 | 1 9 | red | | |
| 1860, arms. | | | | | | |
| <i>block letters</i> . | | | | | | |
| 1798 | 120 c. | | 21 0 | obl. blue | | |
| 1799 | 180 | 0 9 | | green | | |
| 1800 | 240 | 0 9 | | c. ine | | |
| 1861, arms. | | | | | | |
| [<i>Republican Oriental</i> .] | | | | | | |
| 1801 | 60 c. | 0 9 | 0 6 | lake | | |
| 1802 | 80 | 1 0 | 0 9 | green | | |
| 1803 | 10 | 1 3 | 0 6 | brown | | |
| 1804 | 12 | 1 6 | 0 6 | blue | | |
| 1866, arms and figure. | | | | | | |
| 1805 | 1 c. | | | rect. black | 0 2 | |
| 1806 | 5 | | | blue | 0 5 | |
| 1807 | 10 | | | green | 0 9 | |
| 1808 | 15 | | | yellow | 1 0 | |
| 1809 | 20 | | | rose | 1 3 | |
| ENVELOPES. | | | | | | |
| 1866, arms and figure. | | | | | | |
| 1810 | 5 c. | | | oval blue | 0 6 | 0 3 |
| 1811 | 10 | | | green | 1 0 | 0 6 |
| Nevis. | | | | | | |
| ADHESIVE STAMPS. | | | | | | |
| 1861. | | | | | | |
| <i>emblematical figures</i> . | | | | | | |
| 1812 | 1d. | | | rect. lake | 0 4 | 0 3 |
| 1813 | 4d. | | | rose | 0 9 | 0 4 |
| 1814 | 6d. | | | lilac | 1 0 | 0 8 |
| 1815 | 1s. | | | green | 1 6 | 0 9 |
| 1867. | | | | | | |
| 1816 | 1d. | | | rect. bright red | 0 3 | 0 1 |
| 1817 | 4d. | | | vermillion | 0 8 | 0 3 |
| 1818 | 1s. | | | sea green | 1 6 | 0 6 |
| New Brunswick. | | | | | | |
| ADHESIVE STAMPS. | | | | | | |
| 1857, crown and flowers. | | | | | | |
| 1819 | 3d. | | | diamond red | | 1 0 |
| 1820 | 6d. | | | yellow | | 2 0 |
| 1821 | 1s. | | | violet | | 15 0 |
| 1864-65, locomotive. | | | | | | |
| 1822 | 1 c. | | | obl. brown | 0 2 | 0 1 |
| 1823 | 1 c. | | | mauve | 0 2 | 0 1 |
| <i>portrait of Queen</i> . | | | | | | |
| 1824 | 2 c. | | | rect. orange | 0 3 | 0 1 |
| 1825 | 5 | | | green | 0 4 | 0 1 |
| 1826 | 10 | | | vermillion | 0 9 | 0 1 |
| <i>steamship</i> . | | | | | | |
| 1827 | 12½ cents. | | | obl. blue | 0 9 | 0 2 |

| | un- used. s. d. | used. s. d. | | un- used. s. d. | used. s. d. |
|---|-----------------------|----------------|---------------------------------|-----------------------|----------------|
| <i>portrait of Prince of Wales.</i> | | | <i>head.</i> | | |
| 1828 17 cents rect black | 1 3 | 0 4 | 1853 12c. rect. red-brown | 1 0 | 0 4 |
| ESSAY. (?) | | | <i>ship.</i> | | |
| <i>portrait of Connell.</i> | | | 1854 13c. obl. orange | 1 0 | 0 4 |
| 1829 5 c. rect. brown | | | <i>head.</i> | | |
| | | | 1855 24c. rect. blue | 1 9 | 0 6 |
| Newfoundland. | | | New Granada. | | |
| ADHESIVE STAMPS. | | | ADHESIVE STAMPS. | | |
| 1857. <i>heraldic flowers.</i> | | | <i>arms.</i> | | |
| 1830 1d. sq brown violet | 0 4 | | 1857, <i>broad shield,</i> | | |
| 1831 2d. rect vermilion | 2 0 | 1 0 | <i>large figures above and</i> | | |
| 1832 3d. trian. green | 1 0 | 0 8 | <i>below</i> | | |
| 1833 4d. rect vermilion | | 4 0 | 1856 5c. rect. brown | 1 6 | |
| 1834 1d. sq brown violet | | | 1857 5c. " yellow | 3 6 | |
| 1835 6d. rect vermilion | | 2 6 | 1858 5c. " lilac | | |
| 1836 6½d. " " | | | 1859 5c. " blue | 4 0 | |
| 1837 8d. " " | 2 0 | 1 6 | 1860 10c. " brown | 4 6 | |
| 1838 1s. " " | | | 1861 10c. " yellow | 5 6 | |
| | | | 1862 20c. " blue | | |
| 1863. <i>heraldic flowers.</i> | | | 1860, <i>narrow shield,</i> | | |
| 1839 2d. rect. lake | 0 6 | | <i>small figures above and</i> | | |
| 1840 4d. " " | 0 9 | | <i>below.</i> | | |
| 1841 5d. sq. chocolate | 1 6 | | 1863 2½c. oct green | 2 6 | |
| 1842 6d. rect. lake | 1 6 | 1 0 | 1864 5c. " blue | 3 6 | |
| 1843 6½d. " " | 2 0 | | 1865 5c. " lilac | 3 6 | |
| 1844 8d. " " | 3 6 | | 1866 10c. " brown | 4 6 | |
| 1845 1s. " " | 3 0 | | 1867 10c. " red | 3 0 | |
| <i>portrait of the Prince of Wales.</i> | | | 1868 20c. " blue | 4 0 | 2 6 |
| 1865-69. | | | 1869 1 peso carmine | | |
| 1846 1c. rect. mauve | 0 2 | 0 1 | 1861. <i>large rectangular.</i> | | |
| <i>codfish.</i> | | | 1870 2½c. rect black | | |
| 1847 2c. obl. green | 0 3 | 0 2 | 1871 5c. " yellow | | 6 0 |
| <i>portrait of Queen.</i> | | | 1872 5c. " buff | | 6 6 |
| 1848 3c. rect. red | 0 3 | 0 2 | 1878 10c. " blue | | 6 6 |
| <i>seal.</i> | | | 1879 20c. " red | | |
| 1849 5c. obl. brown | 0 6 | 0 6 | 1880 1 peso " rose | | |
| 1850 5c. " black | 0 5 | 0 6 | | | |
| <i>portrait of Queen.</i> | | | 1862, <i>stars, on linear</i> | | |
| 1851 6c. rect. carmine | 0 6 | 0 2 | <i>ground, above and below</i> | | |
| <i>portrait of the Prince of Wales.</i> | | | <i>circle.</i> | | |
| 1852 10c. rect. black | 0 10 | | 1881 10c. ocr. blue | | 6 6 |
| | | | 1882 20c. " red | | |

| | un- used. s. d. | used. s. d. | | un- used. s. d. | used. s. d. |
|---|-----------------------|----------------|---|-----------------------|----------------|
| 1883 50c. " green | | | 1868. | | |
| 1884 1 peso oct. lilac | | 7 0 | <i>stars, eagle, shield, and flags in oval.</i> | | |
| 1863, <i>stars, shield, &c., on plain ground.</i> | | | 1906 5c. rect. yellow | | |
| 1885 5c. oct. yellow | 1 0 | 0 9 | 1907 10c. " blue | | |
| 1886 10c. " blue | 2 0 | 2 0 | <i>on coloured glazed paper.</i> | | |
| 1887 20c. " red | 3 6 | 3 0 | 1908 5 pesos rect green | 0 8 | |
| 1888 50c. " green | | 4 0 | 1909 10 " " vermillion | 1 0 | 0 5 |
| 1864, <i>stars on plain ground, and ornaments at corners.</i> | | | UNPAID LETTER STAMPS. | | |
| 1889 5c. rect. yellow | 0 8 | 0 6 | 1865-69, <i>arms.</i> | | |
| 1890 10c. " blue | 1 6 | 0 6 | 1910 2½c. trian. black | 0 5 | |
| 1891 20c. " red | 2 6 | 1 6 | 1911 2½c. scalene trian. lilac | | |
| 1892 50c. " green | 6 6 | 3 6 | <i>large letter A.</i> | | |
| 1893 1 peso oct. violet | | 4 6 | 1912 5c. square black | 0 9 | |
| 1865. | | | REGISTRATION STAMP. <i>large letter R.</i> | | |
| 1894 1c. rect. pink | 0 3 | | 1913 5c. square black | 0 9 | |
| <i>inscription in broad oval band.</i> | | | STAMPS FOR ADDITIONAL POSTAGE. | | |
| 1895 5c. rect. yellow | 0 8 | 0 6 | 1865, <i>inscribed "Sobre Porte."</i> | | |
| 1896 10c. " violet | 1 0 | 0 6 | 1914 25c. rect. blue | 3 6 | |
| 1897 20c. " blue | 2 0 | 0 8 | 1915 50c. rect. yellow | | |
| 1898 50c. " green | 5 6 | 3 6 | 1916 1 peso rect. rose | | |
| 1899 1 peso rect. rose | | 4 6 | 1868. | | |
| 1900 1 " " red | | 4 6 | 1917 25c. rect. flesh | 3 0 | |
| 1867. | | | 1918 50c. " green | 5 6 | |
| <i>stars above shield on linear ground.</i> | | | 1919 1 peso rect blue | 10 6 | |
| 1901 5c. rect. orange | 0 8 | | ANTIOQUIA. | | |
| <i>stars and branches surrounding circle containing shield.</i> | | | 1869, <i>arms, inscribed "Antioquia."</i> | | |
| 1902 10c. rect. lilac | 1 0 | 0 8 | 1920 2½c. rect. pale blue | | |
| <i>eagle, shield and flags in oval.</i> | | | 1921 2½c. " blue | | |
| 1903 20c. rect. blue | 1 9 | | 1922 5c. " " dark green | | |
| <i>shield surrounded by stars.</i> | | | 1923 5c. rect. green | | |
| 1904 50c. rect. green | 5 6 | | 1924 10c. " pale lilac | | |
| <i>large figure of value in each spandrel.</i> | | | 1925 10c. " mauve | | |
| 1905 1 peso rect. vermillion | | | 1926 20c. " brown | | |
| | | | 1927 1 peso rect. carmine | | |

| | un- used. s. d. | used. s. d. | | un- used. s. d. | used. s. d. |
|--|-----------------------|----------------|---|-----------------------|----------------|
| BOLIVAR. | | | | | |
| 1864, arms, inscribed "Bolivar." | | | 1946. 1 peseta,, red | | 2 6 |
| 1928 10c. small rect. rose | | | 1859, smaller size, groundwork of wavy lines. | | |
| 1929 10c. small rect. green | | | 1947. 1 dinero sq. blue | | 3 6 |
| 1930 1 peso small rect. red | | | 1948. 1 peseta,, red | | |
| Nicaragua. | | | | | |
| ADHESIVE STAMPS. | | | | | |
| 1862-69, mountain landscape. | | | | | |
| 1931 2c. obl. blue | 0 6 | | 1860, groundwork of zigzag lines. | | |
| 1932 5c. ,, black | 0 9 | | 1949. 1 dinero sq. blue | 0 9 | 0 9 |
| 1933 10c. ,, vermilion | 1 0 | | 1950. 1 peseta,, red | 1 0 | 1 0 |
| 1934 25c. ,, blue | 2 0 | | 1862, embossed. | | |
| Nova Scotia. | | | | | |
| ADHESIVE STAMPS. | | | | | |
| 1857, portrait of Queen. | | | | | |
| 1935 1d. square red-brown | 3 6 | 1 6 | 1951. 1 dinero sq. pink | 0 9 | 0 6 |
| <i>crown and heraldic flowers.</i> | | | | | |
| 1936 3d. diamond blue | 1 0 | 0 6 | 1952. 1 peseta,, brown | 1 3 | 0 6 |
| 1937 6d. ,, green | 3 6 | 1 6 | 1866-67, llamas. | | |
| 1938 1s. ,, violet | | | 1953. 5 c. rect. green | 0 9 | 0 6 |
| 1860-63, head of Queen. | | | 1954. 10,, ,, vermilion | 0 9 | 0 6 |
| 1939 1c. rect. black | 0 2 | 0 1 | 1955. 20,, ,, brown | 1 6 | 0 6 |
| 1940 2c. ,, mauve | 0 3 | 0 1 | 1868, arms, embossed | | |
| 1941 5c. ,, blue | 0 4 | 0 1 | 1959. 1 dinerosq. green | 0 9 | 0 6 |
| 1942 8½c. ,, green | 0 9 | 0 5 | PACIFIC STEAM NAVI- GATION COMPANY. | | |
| 1943 10c. ,, red | 1 0 | 0 4 | 1960. 1 real oblong blue | 1 9 | |
| 1944 12½c. ,, black | 1 0 | 0 1 | 1961. 1 ,, ,, green | 1 9 | |
| Peru. | | | | | |
| ADHESIVE STAMPS. | | | | | |
| 1858, arms, large size. | | | | | |
| 1945. 1 dinero sq. blue | | 3 6 | 1962. 1 ,, ,, yellow | 1 9 | |
| | | | 1963. 1 ,, ,, red | 1 9 | |
| | | | 1964. 2 ,, ,, green | 2 0 | |
| | | | 1965. 2 ,, ,, yellow | 2 0 | |
| | | | 1966. 2 ,, ,, blue | 2 0 | |
| | | | 1967. 2 ,, ,, red | 2 0 | |
| | | | 1968. 2 ,, ,, brown | 2 0 | |
| | | | Prince Edward Island. | | |
| | | | ADHESIVE STAMPS. | | |
| | | | 1860-70, head, | | |
| | | | 1969 1d. rect. orange | 0 3 | 0 2 |
| | | | 1970 2d. ,, rose | 0 3 | 0 3 |
| | | | 1971 3d. ,, blue | 0 3 | 0 3 |
| | | | 1972 3d. ,, brown | 0 3 | 0 3 |

| | | | un- used. s. d. | used. s. d. | | | | un- used. s. d. | used. s. d. | | |
|----------------------------|----------------|--------------|-----------------------|----------------|-----------------------|-------------------------------------|------|-------------------------------------|----------------|----|-----|
| 2017 | " | blue | | | | 1860, eagle | | | | | |
| 2018 | " | grey | | | 2040 | 1c. obl. blue | | 0 | 6 | | |
| 1859, value indicated. | | | | | 1861-66, head. | | | | | | |
| 2019 4d. rect. | | | | | U.S. in lower angles. | | | | | | |
| | | brown-violet | | 1 3 | 2041 | 1c. rect. blue | 0 | 2 | 0 1 | | |
| 2020 | 6d. | " dark-green | 0 | 6 | 2042 | 2c. " black | 0 | 2 | 0 2 | | |
| 2021 | 1s. | " blue-black | 1 | 0 | 2043 | 3c. " pale carmine | 0 | 3 | 0 1 | | |
| 1863, value not indicated. | | | | | 2044 | 5c. " brown | 0 | 4 | 0 1 | | |
| 2022. rect. red | | | 0 | 3 | 0 | 1 | 2045 | 10c. " green | 0 | 8 | 0 1 |
| 1863, value indicated. | | | | | 2046 | 12c. " black | 0 | 9 | 0 1 | | |
| | | | | | 2047 | 15c. " black | 1 | 0 | 0 1 | | |
| | | | | | 2048 | 24c. " lilac | | | 0 1 | | |
| 2023 | 4d. rect. | violet | 0 | 8 | 0 | 2 | 2049 | 30c. " orange | 0 | 2 | |
| 2024 | 6d. | " green | 1 | 0 | 0 | 2 | 2050 | 90c. " blue | 0 | 4 | |
| 2025 | 1s. | " mauve | 1 | 9 | 0 | 2 | | | | | |
| 1869, head. | | | | | 1869, head. | | | | | | |
| 2026 | 5s. lar. rect. | maron | 2 | 6 | 2051 | 1c. square brown courier. | 0 | 1 | 0 1 | | |
| Turks Islands. | | | | | 2052 | 2c. square brown locomotive. | 0 | 2 | 0 1 | | |
| ADHESIVE STAMPS. | | | | | 2053 | 3c. square blue head. | 0 | 3 | 0 1 | | |
| 1867, head. | | | | | 2054 | 6c. square blue eagle. | 0 | 5 | 0 1 | | |
| 2027 | 1d. rect. | pink | 0 | 3 | 0 | 2 | 2055 | 10c. square orange steamship. | 0 | 9 | 0 2 |
| 2028 | 6d. | " black | 1 | 0 | 0 | 6 | 2056 | 12c. square green historic picture. | 1 | 0 | 0 1 |
| 2029 | 1s. | " slate | 1 | 9 | 1 | 0 | 2057 | 15c. blue & brown | 1 | 0 | 0 8 |
| United States. | | | | | 2058 | 24c. violet & green eagle and flags | 1 | 9 | 0 6 | | |
| ADHESIVE STAMPS. | | | | | 2059 | 30c. blue & rose head | 2 | 0 | 0 5 | | |
| 1847, head. | | | | | 2060 | 90c. black & red | | | 0 9 | | |
| U. S. post-office. | | | | | 1870, head. | | | | | | |
| 2030 | 5c. rect. | brown | 0 | 9 | 2061 | 1c. rect. blue | 0 | 1 | 0 1 | | |
| 2031 | 10c. | " black | 1 | 6 | 2062 | 2c. " brown | 0 | 2 | 0 1 | | |
| 1851-60, head. | | | | | 2063 | 3c. " green | 0 | 3 | 0 1 | | |
| 2032 | 1c. rect. | blue | 0 | 2 | 0 | 1 | 2064 | 6c. " red | 0 | 5 | 0 1 |
| 2033 | 3c. | " carmine | 0 | 3 | 0 | 2 | 2065 | 10c. " brown | 0 | 9 | 0 1 |
| 2034 | 5c. | " brown | 0 | 8 | 0 | 3 | 2066 | 12c. " purple | 0 | 10 | 0 1 |
| 2035 | 10c. | " green | 0 | 9 | 0 | 2 | 2067 | 15c. " brown | 1 | 0 | 0 2 |
| 2036 | 12c. | " black | 1 | 0 | 0 | 1 | 2068 | 24c. " violet | 1 | 9 | 0 2 |
| 2037 | 24c. | " lilac | 1 | 9 | 0 | 2 | 2069 | 30c. " black | | | 0 1 |
| 2038 | 30c. | " orange | 1 | 6 | | | 2070 | 90c. " scarlet | | | 0 4 |
| 2039 | 90c. | " blue | 3 | 0 | | | | | | | |

| | un- used. s. d. | used. s. d. | | un- used. s. d. | used. s. d. |
|--|-----------------------|----------------|-------------------------|-----------------------|----------------|
| NEWSPAPER STAMPS. | | | | | |
| 1865, head. | | | | | |
| 2071 5c. large rect blue | 0 8 | | 2099 24c. " blue | 1 9 | |
| 2072 10c. " " green | 1 0 | | 2100 30c. " green | 2 0 | |
| 2073 25c. " " red | 2 0 | | 2101 40c. " rose | 2 9 | |
| ENVELOPE STAMPS. | | | | | |
| 1853-55, head, on white or yellow paper. | | | | | |
| 2074 3c. large oval red | 1 0 | 0 2 | NEW YORK. | | |
| 2075 6c. " " red | 2 0 | | ADHESIVE STAMP. | | |
| 2076 6c. " " green | 2 6 | | 1845, head. | | |
| 2077 10c. " " green | 2 6 | | 2102 5c. large rect. | | |
| 1860. | | | | | |
| 2078 1c. small oval blue | 0 4 | | | black | 3 6 2 6 |
| 2079 3c. " " red | 1 0 | | 1870-1. | | |
| 2080 4c. " " blue & red | 1 6 | | head of Franklin. | | |
| 2081 6c. " " red | 1 0 | | 2103 1c. oval blue | 0 2 | |
| 2082 19c. " " green | 1 6 | | head of Jackson. | | |
| 1861 | | | | | |
| 2083 3c. large oval rose | 0 4 | 0 3 | 2104 2c. oval brown | 0 2 | 0 1 |
| 2084 6c. " " rose | 0 6 | 0 4 | head of Washington. | | |
| 2085 10c. oval green | 1 0 | | 2105 3c. oval green | 0 3 | 0 1 |
| 2086 12c. " brown & red | 1 3 | | head of Lincoln. | | |
| 2087 20c. " blue & red | 1 9 | | 2106 6c. oval red | 0 6 | 0 2 |
| 2088 24c. " green & red | 2 3 | | head of Jefferson. | | |
| 2089 40c. " black & red | 3 9 | | 2107 10c. oval brown | 0 10 | |
| 1863-64. | | | | | |
| U.S. postage. | | | | | |
| 2090 2c. hex. black | 0 8 | 0 2 | head of Clay. | | |
| U.S. post. | | | | | |
| 2091 2c. hex. black | 0 2 | 0 1 | 2108 12c. oval purple | 1 0 | 0 1 |
| 1866. | | | | | |
| large figures of value. | | | | | |
| 2092 3c. large oval rose | 0 3 | 0 1 | head of Webster. | | |
| 2093 3c. " " brown | 0 4 | | 2109 15c. oval orange | 1 3 | 0 2 |
| 2094 6c. " " rose | 0 6 | | head of Scott. | | |
| 2095 6c. " " violet | 0 6 | | 2110 24c. oval violet | 2 0 | 0 2 |
| 1866. | | | | | |
| 2096 9c. oval yellow | 0 10 | | head of Hamilton. | | |
| 2097 12c. " brown | 1 0 | | 2111 30c. oval black | 2 0 | 0 2 |
| 2098 18c. " red | 1 8 | | head of Perry. | | |
| | | | 2112 90c. oval scarlet | | 0 4 |
| | | | 1869, head in circle. | | |
| | | | 2114 5c. rect. green | 0 3 | 0 2 |
| | | | 2115 10c. " bistre | 0 5 | 0 2 |
| | | | 2116 20c. " blue | 0 8 | 0 2 |
| | | | 2117 50c. " carmine | 1 6 | 0 2 |
| | | | OCEANIA. | | |
| | | | Dutch Indies. | | |
| | | | ADHESIVE STAMPS. | | |
| | | | 1862, head. | | |
| | | | 2113 10c. rect. carmine | 0 8 | 0 4 |

| | un- used. s. d. | used. s. d. | | un- used. s. d. | used. s. d. |
|-------------------------------|-----------------------|----------------|-----------------------------|-----------------------|----------------|
| New South Wales. | | | 2145 10d. „ lilac | 1 8 | 0 2 |
| ADHESIVE STAMPS. | | | | | |
| 1850, | | | REGISTRATION STAMPS. | | |
| <i>view of Sydney, houses</i> | | | 1853. | | |
| <i>detached with clouds.</i> | | | 2146 oval yellow & blue | | 1 6 |
| 2118 1d. rect. lake | 2 6 | | 2147 „ red and „ | | 0 6 |
| <i>without clouds.</i> | | | | | |
| 2119 1d. rect. lake | 3 6 | | NEWSPAPER WRAPPER | | |
| <i>houses connected.</i> | | | STAMPS. | | |
| 2120 1d. rect. lake | 2 6 | | 1864-65. | | |
| <i>horizontal wavy lines.</i> | | | 2148 1d. oval red | 0 6 | 0 3 |
| <i>with clouds.</i> | | | 2149 1d. rect. „ | 0 3 | 0 1 |
| 2121 2d. rect. blue | 2 6 | | | | |
| <i>without clouds.</i> | | | ENVELOPE STAMPS. | | |
| 2122 2d. rect. blue | 3 6 | | <i>For Sydney.</i> | | |
| <i>perpendicular wavy</i> | | | 1849, arms. | | |
| <i>lines.</i> | | | 2150 [1d.] circ. white | | |
| <i>with clouds.</i> | | | | | |
| 2123 2d. rect. blue | 3 6 | | 1871. | | |
| <i>without clouds.</i> | | | 2151 9d. rect. red brown | | 0 6 |
| 2124 2d. rect. blue | 3 6 | | | | |
| <i>with clouds.</i> | | | | | |
| 2125 3d. rect. green | 2 0 | | | | |
| 1851-53, laureated | | | New Zealand. | | |
| <i>head.</i> | | | ADHESIVE STAMPS. | | |
| 2126 1d. rect. red | 0 9 | | 1859-67, head, blue paper. | | |
| 2127 1d. „ orange | 0 8 | | 2152 1d. rect. vermilion | | 4 0 |
| 2128 2d. „ blue | 0 3 | | 2153 „ „ „ | 0 3 | 0 1 |
| 2129 3d. „ green | 0 5 | | 2154 2d. „ „ blue | | 8 0 |
| 2130 6d. „ brown | 2 0 | | 2155 „ „ „ | 0 4 | 0 1 |
| 2131 8d. „ orange | 7 6 | | 2156 3d. „ violet | 0 6 | 0 2 |
| | | | 2157 4d. „ rose | 1 0 | 0 6 |
| 1854-56, diademed head. | | | 2158 4d. „ yellow | 0 8 | 0 4 |
| 2132 1d. rect. red | 0 3 | 0 2 | 2159 6d. „ chocolate | 1 0 | 0 2 |
| 2133 2d. „ blue | 0 4 | 0 2 | 2160 1s. „ green | 1 9 | 0 2 |
| 2134 3d. „ green | 0 6 | 0 2 | | | |
| 2135 5d. large square „ | 10 | 0 6 | 1872. | | |
| 2136 6d. „ cinnamon | | 0 4 | 2161 1d. rect. brown | | 0 1 |
| 2137 6d. „ violet | | 0 2 | 2162 2d. „ red | | 0 2 |
| 2138 6d. „ sage-green | | 0 5 | 2163 6d. „ blue | | 0 2 |
| 2139 8d. „ orange | 1 8 | 0 5 | | | |
| 2140 1s. „ rose | 1 6 | 0 2 | | | |
| 2141 5s. circular violet | | 0 8 | Queensland. | | |
| | | | ADHESIVE STAMPS. | | |
| 1862-67. | | | 1861-67, head. | | |
| 2142 1d. rect. red | 0 2 | 0 1 | 2164 1d. rect. lake-red | 0 9 | 0 3 |
| 2143 2d. „ light blue | 0 3 | 0 1 | 2165 1d. „ orange | 0 2 | 0 1 |
| 2144 4d. „ red | 0 7 | 0 1 | | | |

| | un- used. s. d. | used. s. d. | | un- used. s. d. | used. s. d. |
|--|-----------------------|----------------|---|-----------------------|----------------|
| 2166 2d. „ blue | 0 4 | 0 1 | 2184 2 „ „ blue | | |
| 2167 3d. „ brown | 0 6 | 0 3 | | | |
| 2168 4d. „ mauve | 0 8 | 0 3 | <i>on white paper.</i> | | |
| 2169 6d. „ green | 1 0 | 0 2 | 1863. | | |
| 2170 1s. „ purple | 1 0 | 0 3 | 2185 1 cent rect. black | 0 3 | |
| 2171 5s. „ light rose | | 1 0 | 2186 2 „ „ „ | 0 4 | |
| REGISTRATION STAMP. | | | 1865, with "Inter island" on left. | | |
| 2172 rect. yellow | | 0 5 | 2187 1 cent rect. blue | 0 3 | |
| | | | 2188 2 „ „ „ | 0 4 | |
| Sandwich Islands. | | | | | |
| ADHESIVE STAMPS. | | | South Australia. | | |
| 1852, figure in fancy border. | | | ADHESIVE STAMPS. | | |
| 2173 13 cents rect. blue | | | 1855-69, head. | | |
| 1853, head to right, on bluish paper. | | | 2189 1d. rect dark green | | 0 5 |
| 2174 5 cents rect. blue | 4 6 | | 2190 1d. „ green | 0 2 | 0 1 |
| <i>on white paper.</i> | | | 2191 2d. „ carmine | | 0 2 |
| 2175 5 cents rect. blue | 1 0 | | 2192 2d. „ orange | | 0 1 |
| 2176 13 „ vermilion | 3 6 | | 2193 6d. „ dark blue | | 0 3 |
| 1862, head to left, branches at side. | | | 2194 6d. „ light blue | 10 | 0 2 |
| 2177 2 cents rect. rose | 1 0 | | 2195 9d. „ grey | 1 3 | 0 6 |
| 1864-66, head to left, in oval. | | | 2196 10d. „ orange red | | 0 6 |
| 2178 2 c. rect. vermilion | 0 4 | | 2197 10d. „ yellow | 1 6 | 0 4 |
| 2179 5 „ „ blue | 0 9 | | 2198 1s. „ orange | | 0 8 |
| 1868, figure of value. | | | 2199 1s. „ red brown | 1 6 | 0 2 |
| 2180 5 cents rect. blue | 0 3 | | 1867-69, head, same design as 1 cent Nova Scotia. | | |
| STAMPS FOR ADDITIONAL POSTAGE. | | | 2200 2d. rect. orange | 0 4 | 0 1 |
| figure of value on bluish paper. | | | 2201 4d. „ mauve | 0 7 | 0 2 |
| 1859. | | | 2202 2s. „ carmine | | 0 6 |
| 2181 1 cent rect. blue | | | | | |
| 2182 2 „ „ black | | | Tasmania. | | |
| 1863. | | | ADHESIVE STAMPS. | | |
| 2183 1 cent rect. black | | | 1853, small head. | | |
| | | | 2203 1d. rect. blue | 10 6 | 2 6 |
| | | | 2204 4d. oct. orange | 2 6 | 0 4 |
| | | | 1855, head. | | |
| | | | 2205 1d. rect. red | 0 2 | 0 1 |
| | | | 2206 2d. „ green | 0 3 | 0 1 |
| | | | 2207 4d. „ blue | 0 7 | 0 1 |

| | un-used. s. d. | used. s. d. | | un-used. s. d. | used. s. d. |
|--|-------------------|----------------|-------------------------------------|-------------------|----------------|
| 2208 6d. " lilac | 0 9 | 0 1 | 2233 2 " " green | 1 3 | 0 3 |
| 2209 1s. " red | 1 6 | 0 2 | 2234 2 " " yellow | | 0 9 |
| — | | | | | |
| Venezuela. | | | | | |
| ADHESIVE STAMPS. | | | | | |
| 1869, arms in shield, on linear ground. | | | | | |
| 2210 $\frac{1}{2}$ rl. sm. rect. yellow | | 0 3 | 1869, steamship sailing to left. | | |
| 2211 1 " " blue | 0 8 | | | | |
| 2212 2 " " red | 1 0 | | 2235 $\frac{1}{2}$ real rect. green | | 0 5 |
| — | | | | | |
| Virgin Islands. | | | | | |
| ADHESIVE STAMPS. | | | | | |
| 1866-67, figure of Virgin. | | | | | |
| 1861, arms in shield on white ground. | | | 2237 1d. rect. green | 0 3 | |
| 2213 $\frac{1}{4}$ c. large rect. green | | 0 4 | 2238 4d. " red-brown | 0 7 | |
| 2214 $\frac{1}{2}$ " " purple | 0 5 | | 2239 6d. " rose | 0 9 | |
| 2215 1 " " brown | 0 6 | | 2240 1s. " pink | 1 9 | |
| — | | | | | |
| Victoria. | | | | | |
| ADHESIVE STAMPS. | | | | | |
| 1852, half length por- trait of Queen. | | | | | |
| 1863, eagle in circle. | | | 2242 1d. rect. rose | | 0 5 |
| 2216 $\frac{1}{4}$ c. rect. red | 0 2 | | 2243 2d. " ash | | 1 6 |
| 2217 " " slate | 0 8 | | 2244 3d. " blue | | 0 2 |
| 2218 " " yellow | 0 4 | | 1857-58, Queen enthroned. | | |
| 2219 1 " " blue | 0 8 | | 2245 1d. rect. green | 1 0 | |
| 2220 2 " " green | 1 0 | | 2246 2d. " brown | 0 3 | |
| — | | | | | |
| 1866-67, arms in oc- tagon. | | | | | |
| 2221 $\frac{1}{4}$ c. square pea | | 0 2 | 2247 6d. " blue | 0 2 | |
| 2222 1 " " blue green | 0 2 | | head. 1858-64. | | |
| 2223 $\frac{1}{2}$ rl. " rose | 0 6 | 0 2 | 2248 6d. rect. orange | | 0 3 |
| 2224 1 rl. rect. red | 1 0 | 0 3 | 2249 6d. " black | | 0 6 |
| 2225 2 " " yellow | 1 9 | 0 6 | 2250 1s. oct. blue | | 0 4 |
| — | | | | | |
| LA GUAIRA. | | | | | |
| 1864-65, steamship sailing to right. | | | | | |
| 2226 $\frac{1}{2}$ c. rect. grey | 0 2 | | 2251 2s. rect. green | | 0 3 |
| 2227 1 " " rose | 0 3 | | 2252 2s. " blue | | 0 3 |
| 2228 2 " " green | 0 4 | | with emblems in angles. 1859. | | |
| 2229 3 " " yellow | 0 5 | | 2253 1d. rect. green | | 0 2 |
| 2230 4 " " blue | 0 6 | | 2254 2d. " lilac | | 0 2 |
| 2231 $\frac{1}{2}$ real " rose | 0 6 | 0 3 | | | |
| 2232 $\frac{1}{2}$ " " blue | 1 0 | 0 6 | | | |

| | un- used. s. d. | used. s. d. | | un- used s. d. | used. s. d. |
|--|-----------------------|----------------|-------------------------------|----------------------|----------------|
| 2255 4d. „ red | | 0 2 | REGISTRATION STAMP. | | |
| without emblems in angles. 1862. | | | 2278 1s. rect. rose & blue | | 3 0 |
| 2256 1d. rect. green | 0 4 | 0 2 | ENVELOPE STAMP. | | |
| with figure of value on sides. 1862-6. | | | 1869. | | |
| 2257 3d. rect. blue | | 0 2 | 2279 2d. oval pink | 0 4 | 0 2 |
| 2258 3d. „ lake | | 0 4 | NEWSPAPER | | |
| 2259 4d. „ rose | | 0 2 | WRAPPER STAMP. | | |
| 2260 6d. „ orange | 8 0 | | 2280 1d. rect. green | 0 2 | 0 2 |
| 2261 6d. „ black | | 0 1 | | | |
| with larger inscription. | | | Western Australia. | | |
| 2262 6d. „ black | 1 6 | 0 2 | ADHESIVE STAMPS. | | |
| laureated head in circle. 1863-5. | | | swan. 1855. | | |
| 2263 1d. rect. green | 0 2 | 0 1 | 2281 2d. oct. black on red | 5 6 | 3 6 |
| 2264 2d. „ lilac | 0 4 | 0 1 | 2282 4d. „ blue | 0 9 | 0 6 |
| 2265 4d. „ rose | 0 7 | 0 1 | 2283 6d. „ bronze | 6 6 | 3 6 |
| 2266 8d. „ orange | 1 3 | 0 3 | 2284 1s. „ brown | 2 6 | 1 8 |
| 2267 1s. oct. blue | 1 9 | 0 1 | 1860-61. | | |
| 1868. | | | 2285 1d. obl. black | 1 6 | 0 6 |
| 2268 5s. circ. blue and yellow | | 1 6 | 2286 2d. „ orange | 0 6 | 0 8 |
| 2269 5s. „ blue and red | | 0 9 | 2287 4d. „ blue | 1 6 | |
| laureated head in oval. 1865-71. | | | 2288 6d. „ green | | 2 0 |
| 2270 3d. rect. lilac | 0 7 | 0 2 | 1862-64. | | |
| 2271 3d. „ orange | 0 6 | 0 1 | 2289 1d. obl. rose | 0 3 | 0 1 |
| 2272 6d. „ blue | 0 9 | 0 1 | 2290 2d. „ blue | 0 4 | 0 1 |
| 2273 9d. „ red-brown | 1 6 | 0 3 | 2291 4d. „ vermilion | 1 0 | 0 4 |
| 2274 10d. „ slate | | 1 0 | 2292 6d. violet brown | 1 3 | 0 4 |
| 2275 10d. „ red-brown | 1 6 | 0 2 | 2293 1s. „ dark green | 2 0 | 0 8 |
| diademed head in oval. 1870. | | | 1865. | | |
| 2276 2d. rect. lilac | 0 3 | 0 1 | 2294 1d. obl. bistre | 0 3 | 0 2 |
| “TOO-LATE” STAMP. 1858. | | | 2295 2d. „ orange | 0 4 | 0 2 |
| 2277 6d. rect. lilac and green | | 2 6 | 2296 4d. „ rose | 0 8 | 0 2 |
| | | | 2297 6d. „ violet | 1 0 | 0 2 |
| | | | 2298 1s. „ green | 1 9 | 0 6 |