



Brewford 305(14)

JANUARY]

[1870

C. & H. GLOYN'S MONTHLY PRICE LIST

OF

British and Foreign Postage Stamps,

CONTAINING

PRICES AND DESCRIPTIONS OF ALL STAMPS
ISSUED TO THE PRESENT TIME.

**ACOMB HOUSE, GREENHEYS,
NEAR MANCHESTER.**

This List is issued on the First day of each Month, and will be sent to any Address in the Kingdom, Post free, for ONE PENNY.

MANCHESTER:
PRINTED BY BERESFORD & HAVILL, 36, CORPORATION STREET.

1870.

C. & H. GLOYN'S

MONTHLY PRICE LIST

OF

BRITISH & FOREIGN POSTAGE STAMPS,

ACOMB HOUSE, GREENHEYS, NEAR MANCHESTER.

ALL STAMPS SOLD BY US ARE GUARANTEED GENUINE

Prices of all Stamps in this List Per Dozen on application.

Remittances can be made in unused English Stamps for orders not exceeding 10s.; above that amount by Post-office Order, payable at the Oxford Road Post-office, Manchester, or by cheque crossed Union Bank of Manchester, Oxford Street Branch. Dealers and Collectors on the Continent and in the Colonies may forward unused Stamps of small values, Prussian Thaler Notes, or Banker's Drafts.

All Orders executed, and letters answered, *per return of post*; and all communications must contain sufficient stamp for reply.

Unless otherwise mentioned, the stamps in this list are rectangular.

		Unused	Used			Unused	Used
		s. d.	s. d.			s. d.	s. d.
ANGOLA.							
6 reis	black						
10 "	yellow						
20 "	straw						
25 "	rose						
50 "	green						
80 "	orange						
110 "	lilac						
120 "	blue						
ANTIGUA.							
1d	brick-red and rose	0 2	0 1				
6d	green	1 0	0 2				
ARGENTINE REPUBLIC.							
Issued 1860.							
5 centav (small border)	red	2 6					
10 "	green	3 6					
15 "	blue	3 6					
5 "	(large border) red	0 6	0 6				
10 "	green	1 0					
15 "	blue	1 6					
Issued 1862.							
5 centavos, arms,	rose	0 4	0 3				
10 "	green	0 8	0 6				
15 "	blue	2 6	1 6				
Issued 1864.							
5 centavos, head, red & rose		0 6	0 2				
10 "	green	0 9	0 4				
15 "	blue	1 3	0 6				
Issued 1867.							
5 centavos	vermillion	0 6	0 2				
10 "	green	1 0					
15 "	blue	1 6					
For the Town of Corrientes.							
1 real m.c.	indigo						
No value		5 0					
"	green	4 0	4 0				
AUSTRIA.							
ADHESIVE STAMPS.							
Issued 1850, arms.							
1 kreuzer	orange		0 4				
1 "	yellow	2 0	0 2				
2 "	black	2 0	0 2				
3 "	red	1 0	0 1				
6 "	brown	1 0	0 1				
9 "	blue	1 0	0 1				
Austria--continued.							
Issued 1858, head to left.							
2 kreuzer	orange					0 8	
2 "	yellow	1 6	0 2				
3 "	black	2 6	0 4				
3 "	green	1 6	0 3				
5 "	red	1 6	0 1				
19 "	brown	1 6	0 1				
15 "	blue	1 6	0 1				
Issued 1861, head to right.							
2 kreuzer, oval,	yellow	0 2	0 1				
3 "	green	0 3	0 1				
5 "	red	0 4	0 1				
10 "	brown	0 6	0 1				
15 "	blue	0 6	0 1				
Issued 1863, eagle.							
2 kreuzer, oval,	yellow	0 2	0 1				
3 "	green	0 2	0 1				
5 "	rose	0 3	0 1				
10 "	blue	0 5	0 1				
15 "	pale brown	0 5	0 1				
Issued 1867, head to right.							
2 kreuzer	yellow	0 2	0 1				
3 "	green	0 3	0 1				
5 "	red	0 4	0 1				
10 "	blue	0 6	0 1				
15 "	brown	0 9	0 1				
25 "	violet	1 6	0 1				
50 "	flesh	2 6	0 6				
Newspaper Stamps.							
Head of Mercury,							
	red						
	rose						
	yellow						
	blue	0 4	0 2				
	lavender	0 1	0 1				
Head to left							
	blue	0 6	0 2				
	lavender	0 6	0 3				
Head to right slate and grey							
Arms	slate	0 1	0 1				
1 kreuzer, arms	black	2 6					
2 "	light and dark green					0 3	
4 "	red					3 6	
1 "	present issue, blue	0 2	0 1				
2 "	brown	0 2	0 1				
2 "	red	0 4	0 2				

Austria—continued.		Unused		Used	
		n.	d.	n.	d.
4 kreuzer	brown	5	0	2	0
ENVELOPE STAMPS.					
Issued 1858, <i>head to right</i> .					
3 kreuzer, oval,	green	0	6		
5 "	red	0	9	0	4
10 "	brown	1	3	0	4
15 "	blue	1	6	0	4
20 "	orange	2	6		
25 "	chocolate	3	0		
80 "	violet	3	6		
85 "	pale brown	3	6		
Issued 1863, <i>eagle</i> .					
3 kreuzer, oval,	green	0	4	0	2
5 "	rose	0	6	0	1
10 "	blue	0	9	0	2
15 "	pale brown	1	0	0	1
25 "	violet	1	6	0	8
Issued 1867, <i>head to right</i> .					
3 kreuzer	green	0	3		
5 "	red	0	4	0	1
10 "	blue	0	8		
15 "	brown	1	0		
25 "	violet	1	6	0	8
AUSTRIAN ITALY.					
ADHESIVE STAMPS.					
Issued 1850, <i>arms</i> .					
5 centes	yellow & orange	2	0	0	6
10 "	black	2	0	0	6
15 "	red	2	0	0	1
30 "	brown	2	0	0	1
45 "	blue	2	0	0	1
Issued 1858, <i>head to left</i> .					
2 soldi	yellow	0	4	0	2
3 "	black	1	0	0	4
3 "	green	0	6	0	2
5 "	red	1	0	0	2
10 "	brown	1	0	0	2
15 "	blue	1	0	0	2
Issued 1861, <i>head to right</i> .					
2 soldi, oval,	yellow	3	6		
3 "	green	3	6		
5 "	red	1	6	0	2
10 "	brown	1	6	0	3
15 "	blue	5	0		
Issued 1863, <i>eagle</i> .					
2 soldi, oval,	yellow	0	3	0	2
3 "	green	0	5	0	2
5 "	rose	0	7	0	1
10 "	blue	0	9	0	1
15 "	pale brown	1	0	0	1
Issued 1867, <i>head to right</i> .					
2 soldi	yellow	0	2		
3 "	green	0	3		
5 "	rose	0	5	0	2
10 "	blue	0	8	0	2
15 "	brown	0	10	0	2
25 "	violet	1	6	0	4
50 "	flesh	2	6	0	9
ENVELOPE STAMPS.					
Issued 1861, <i>head to right</i> .					
3 soldi, oval,	green	0	6		
5 "	red	1	0		
10 "	brown	1	6		
15 "	blue	2	0		
20 "	orange	2	6		
25 "	chocolate	3	0		
30 "	violet	3	6		
35 "	pale brown	3	6		
Issued 1863, <i>eagle</i> .					
3 soldi, oval,	green	0	4		

BARBADOS.		Unused	Used
		s. d.	s. d.
On blue paper, not perforated			
Value not indicated	red	2 0	0 0
"	blue	10 0	0 0
"	green	10 0	0 0
On white paper, not perforated			
Value not indicated,	blue	0 6	0 0
"	green	0 9	0 0
6d	red		
1s	black	0 6	0 0
Perforated.			
Value not indicated, lit.	green	0 2	0 1
"	dark green	0 1	0 1
"	blue	0 2	0 1
"	rose	1 0	0 6
"	brown	1 0	0 4
"	brick red	1 0	0 4
6d	rose	2 6	0 3
6d	brick red	1 0	0 2
1s	dark brown	2 0	0 2
BAVARIA.			
1 kreuzer (1849)	black	2 6	1 6
1 " (1851)	rose	0 3	0 1
3 " "	blue	0 3	0 1
6 " "	brown	0 4	0 1
9 " "	green	0 6	0 1
12 " "	red	1 0	0 6
13 " "	yellow	1 0	0 4
1 " (1862)	yellow	0 1	0 1
8 " "	rose	0 2	0 1
6 " "	blue	0 3	0 1
9 " "	pale brown	0 4	0 1
12 " "	green	0 6	0 3
18 " "	red	0 10	0 2
3 kreuz. (for unpd. letters) blk		0 6	
For returned letters.			
For Munich, Augsburg, Nürnberg, Bamberg, and Würzburg each			
		0 4	
Issued 1867-68, arms			
1 kreuzer	green	0 1	0 1
3 " "	rose	0 3	0 1
6 " "	cobalt	0 6	0 1
6 " "	bistre	0 6	0 0
7 " "	blue	0 6	0 0
9 " "	bistre	0 9	0 2
12 " "	violet	1 0	0 0
18 " "	red	1 0	0 0
3 " (envelope)	rose	0 3	0 0
BELGIUM.			
Issued 1849.			
10 centimes,	brown	15 0	0 4
20 " "	blue	15 0	0 3
Issued 1850.			
1 centime,	green	0 1	0 1
10 " "	brown	0 4	0 1
20 " "	blue	0 6	0 1
40 " "	red	1 0	0 1
Issued 1865-66.			
1 centime, arms,	slate	0 1	0 1
2 " "	blue	0 1	0 1
5 " "	chocolate	0 1	0 1
10 " " head of king,	slate	0 2	0 1
20 " "	blue	0 4	0 1
30 " "	brown	0 5	0 1
40 " "	rose	0 8	0 2
1 franc	lilac	1 6	0 4
Issued 1869.			
1 centime (arms)	green	0 1	0 1
10 " (head)	green	0 2	0 1
BERGENDORF.			
½ schilling,	violet	5 0	0 0

Bergedorf—continued.		Unused	Used
		s. d.	s. d.
3 schilling	rose	7 6	0 0
½ " "	blue	0 1	0 0
1 " "	white	0 2	0 0
1½ " "	yellow	0 2	0 0
3 " "	blue on rose	0 4	0 0
4 " "	brown	0 6	0 0
BERMUDA.			
1d	rose	0 2	0 2
2d	blue	0 4	0 0
6d	lilac	1 0	0 6
1s	green	2 6	0 9
BOLIVIA.			
5 centavos, eagle (1867)	green	2 0	1 6
10 " "	brown		
50 " "	yellow		
100 " "	blue		
5 " view (1868)	green	0 8	0 0
10 " "	vermillion	1 0	0 6
50 " "	blue	5 0	0 0
100 " "	orange		
500 " "	black		
BRAZIL.			
<i>Large figures.</i>			
30 reis, oval,	black	10 6	3 0
60 " "	"	5 0	1 6
90 " "	"	20 9	8 6
<i>Italic figures.</i>			
10 reis, octagonal,	black	0 9	0 6
30 " "	"	0 9	0 4
60 " "	"	0 8	0 4
90 " "	"	1 6	0 8
180 " "	"		15 0
300 " "	"		20 0
600 " "	"		25 0
<i>Small figures.</i>			
10 reis	black	0 3	0 3
10 " "	blue	0 2	0 1
20 " "	black	0 3	0 3
30 " "	"	0 3	0 2
30 " "	blue	0 3	0 3
60 " "	black	0 4	0 1
90 " "	"	0 9	0 3
130 " "	"	1 0	0 8
230 " "	vermillion	2 6	0 8
300 " "	black	2 6	0 8
430 " "	yellow	3 0	1 3
600 " "	black	5 0	0 8
Issued 1866, head.			
10 reis	orange red	0 2	0 1
20 " "	purple	0 3	0 2
50 " "	indigo	0 6	0 2
80 " "	purple	0 3	0 3
100 " "	green	0 9	0 2
200 " "	black	1 0	0 4
500 " "	orange	2 0	0 6
ENVELOPE STAMPS.			
100 reis, oval	green	1 0	0 6
200 " "	black	1 0	0 0
300 " "	red	2 6	0 0
BREMEN.			
ADHESIVE STAMPS.			
2 grots	orange	0 3	0 0
3 " "	blue	0 4	0 3
5 " "	rose	0 6	0 6
7 " "	yellow	0 9	0 4
10 " "	black	1 0	0 9
5 silb gros	green	0 9	0 2
ENVELOPE STAMPS.			
1 grots, oval, on white paper		0 2	0 0
1 " " on blue paper		0 3	0 0

BRITISH COLUMBIA & VANCOUVER'S ISLAND.		Unused s. d.	Used s. d.
24d	pink	1 0	0 9
3d	blue	0 8	0 8
5 cents	rose	0 8	0 6
10 "	blue	1 6	0 0
2 " (1868)	brown	0 2	
5 "	orange	0 8	
10 "	rose	1 0	
25 "	yellow	2 6	
50 "	violet	5 0	
1 dollar	green	10 0	
BRITISH GUIANA.			
1 cent, large,	carmine	5 0	
4 "	blue	5 0	
Issued 1850.			
4 cents, circular	yellow		
8 " "	green		
12 " "	blue		
1 cent Issued 1853.	brown	5 0	
4 " "	blue	5 0	
1 cent Issued 1860	brown		3 6
1 " "	red		5 0
1 " "	rose	1 0	1 0
1 " "	black	0 2	0 1
2 " "	orange	0 3	0 1
4 " "	blue	0 4	0 2
8 " "	rose	0 8	0 6
8 " "	lilac		0 4
12 " "	lilac and grey	1 0	0 2
24 " "	green		0 6
Issued 1863.			
6 cents, large,	blue	0 6	0 4
24 " "	green	2 6	0 2
48 " "	rose		0 6
48 " "	brick red	4 0	0 6
Newspaper stamps.			
1 cent	rose		
2 " "	yellow		
4 " "	blue		
BRITISH HONDURAS.			
1d	blue	0 2	
6d	rose	1 0	
1s	green	2 6	
BRUNSWICK.			
ADHESIVE STAMPS.			
Issued 1852, colour on white.			
1 silber groschen	rose		2 6
2 " "	blue		2 0
3 " "	red		1 6
Issued 1854, black on colour.			
½ silb gros	brown		1 0
1 " "	yellow	0 3	0 2
1 " "	orange		0 4
2 " "	blue	0 6	0 4
3 " "	pink		7 6
Issued 1860.			
½ guten groschen	brown	0 1	0 1
½ silb gros	white	0 2	0 1
½ silb gros	green	0 1	0 1
Issued 1862, colour on white.			
¼ silb gros	yellow	0 3	0 2
3 " "	rose	0 6	0 3
Issued 1865.			
½ silb gros, oval,	black	0 1	0 1
1 " "	rose	0 1	0 1
2 " "	blue	0 2	0 2
3 " "	brown	0 2	0 2
ENVELOPE STAMPS.			
Issued 1860, large oval.			
1 silb gros	yellow	0 2	0 2
2 " "	blue	0 4	

Brunswick—continued.		Unused s. d.	Used s. d.
3 silb gros	rose	0 6	
Issued 1865, small oval.			
1 silb gros	rose	0 1	0 1
2 " "	blue	0 2	
3 " "	brown	0 2	
BUENOS AYRES.			
Steamship.			
1 peso	blue	15 0	5 0
2 " "	"		5 0
3 " "	green		
4 " "	red		
4 " "	brown		
4 " "	blue		
5 " "	brown		
5 " "	orange		
Head of Liberty.			
1 peso, old issue,	blue	0 8	0 6
2 " "	scarlet	5 0	3 0
1 " present issue,	rose	1 6	1 0
2 " "	blue	2 6	1 0
4 reales	green	5 0	3 0
CANADA.			
ADHESIVE STAMPS.			
Issued 1856.			
½d	rose	2 0	0 8
3d	vermilion	2 0	0 3
6d	black		3 6
6d	violet		3 6
6d sterling, 7½ cy	green		2 6
10d	blue		2 0
12d	black		
Issued 1860.			
1 cent	rose	0 1	0 1
2 " "	"	0 2	0 1
5 " "	vermilion	0 3	0 1
10 " "	brown	0 9	0 2
10 " "	purple	0 9	0 2
12½ " "	light and dark green	1 0	0 1
17 " "	blue	1 6	0 3
Issued 1868.			
½ cent	black	0 1	0 1
1 " "	brown	0 1	0 1
1 " "	orange	0 1	0 1
2 " "	green	0 2	0 1
3 " "	red	0 3	0 1
6 " "	brown	0 6	0 2
12½ " "	blue	1 0	0 2
15 " "	mauve	1 3	0 4
ENVELOPE STAMPS.			
5 cents, oval,	vermilion	1 0	0 6
10 " "	brown	1 6	1 0
CAPE OF GOOD HOPE.			
Wood block.			
1d triangular	rose and red		5 0
1d	blue		
4d	pale blue		3 0
4d	deep blue		
4d	rose		
Issued 1861.			
1d triangular	red on blue		1 0
4d	blue on blue		1 0
1d, on white paper	rose & red	0 3	0 2
4d	blue	0 9	0 2
6d	lilac	1 0	0 3
6d	grey		0 3
1s	yellow-green		0 6
1s	dark green		0 6
1s	emerald		1 0
Issued 1864.			
1d square	red	0 2	0 1

Cape of Good Hope—con.		Unused s. d.	Used s. d.
4d	blue	0 8	0 2
6d	blue	1 0	0 4
1s	green	2 0	0 2
4d (1863)	red on lilac	0 8	0 3
CEYLON.			
ADHESIVE STAMPS.			
1d	lilac	0 2	0 2
1d	purple	0 1	
1d	on bluish paper		2 0
1d	light and dark blue	0 3	0 2
2d	light and dark green	0 6	0 2
2d	yellow	0 6	0 3
3d	pink	0 8	0 3
4d, octagonal,	red and rose	0 9	0 6
5d	brown	2 0	0 6
5d	green	1 0	0 4
6d	light and dark brown	1 0	0 2
6d	purple		0 4
6d	on bluish paper		1 6
8d, oct	yellow-brown		2 6
8d,	chocolate	1 3	0 8
9d,	light and dark brown	1 6	0 6
9d,	purple		1 0
10d	red	1 6	0 3
10d	scarlet		0 3
10d	yellow		0 6
1s	violet	2 6	0 2
1s 9d, oct,	green	4 0	
2s, oct,	pale blue		1 0
2s,	indigo		0 6
2s,	deep blue	4 0	0 3
1d (1869)	blue	0 3	0 2
ENVELOPE STAMPS.			
1d oval	blue	0 3	0 2
2d "	green	0 6	
4d "	rose	0 9	
5d "	brown	1 0	
6d circular	"	1 0	
6d "	on blue paper	1 6	
8d oct	brown	1 6	
9d rectangular	purple	1 6	
10d circular	brick red	2 6	
1s "	yellow	2 6	
1s 9d rect	green	5 0	
2s oct	blue	5 0	
CHILI.			
Issued 1852, on blue paper.			
5 centavos	brown		2 0
10 "	blue		5 0
On white paper.			
1 centavo	yellow	0 3	
5 "	red	0 5	0 4
10 "	blue	0 9	0 4
20 "	green	2 0	1 0
1 centavo (1867-8)	orange	0 2	
2 "	black	0 4	
5 "	red	1 0	0 6
10 "	blue	1 6	0 9
20 "	green	2 8	1 3
CONFEDERATE STATES OF AMERICA.			
1 cent (head of Colquhoun),	orange	15 0	
2 "	green		
1st issue, head of Davis, oval.			
5 cents, large,	green	5 0	3 6
5 "	blue	3 6	8 0
Head of Beauregard.			
10 cents	rose		
10 "	blue		5 0

Confederate States—con.		Unused s. d.	Used s. d.
Issued 1862, head of Davis, in circle.			
5 cents	blue	0 2	0 2
10 "	blue	0 3	0 3
10 "	(value in words)		
Issued 1863.			
2 cents (head of Jackson) red		0 6	
20 " (Washington) green		1 0	0 3
NEW ORLEANS.			
2 cents	red	0 6	
2 "	blue	0 6	
6 "	brown	0 6	
COSTA RICA.			
$\frac{1}{2}$ real	blue	1 0	0 9
2 "	vermillion	2 0	0 6
4 "	green	5 0	2 0
1 peso	orange	6 0	2 6
DENMARK.			
ADHESIVE STAMPS.			
Issued 1852.			
2 R.B.S.	blue	4 0	1 3
4 "	cinnamon	5 0	0 2
4 "	dark brown	3 6	0 1
Issued 1860, dotted ground.			
2 skilling	blue	0 2	0 1
4 "	brown	1 0	0 1
8 "	green	1 0	0 1
16 "	grey	1 0	0 6
16 "	lilac	1 0	0 4
4 skill	Wavy ground. brown	0 3	0 1
8 "	green	0 6	0 2
Issued 1864.			
2 skill	blue	0 2	0 1
3 "	lilac	0 2	0 1
4 "	red	0 3	0 1
6 "	stone	0 8	0 4
16 "	grey	0 9	0 2
ENVELOPE STAMPS.			
2 skill, oval	blue	0 2	
4 "	red	0 3	0 3
SCHLESWIG-HOLSTEIN.			
Issued 1849.			
1 schilling	blue	0 6	
2 "	rose	1 0	
Issued 1865, inscription "Schleswig-Holstein."			
$\frac{1}{2}$ sch, oval,	rose	0 2	0 2
1 $\frac{1}{2}$ "	green	0 3	0 1
1 $\frac{1}{2}$ "	violet	0 4	0 4
3 "	blue	0 8	
4 "	pale brown	1 0	
SCHLESWIG.			
Inscription "Herzogth- Schleswig."			
$\frac{1}{2}$ sch, oval	green	0 2	0 2
1 $\frac{1}{2}$ "	"	0 3	0 1
1 $\frac{1}{2}$ "	purple and lilac	0 3	0 1
1 $\frac{1}{2}$ "	rose	0 4	0 3
2 "	blue	0 6	0 4
4 "	rose	0 4	0 3
4 "	pale brown	0 8	0
HOLSTEIN.			
1 $\frac{1}{2}$ sch (small letters)	blue	0 4	0 2
1 $\frac{1}{2}$ " (large letters)	"	0 3	0 2
1 " blue on rose		0 3	0 1
Inscription "Herzogth- Holstein."			
$\frac{1}{2}$ sch, oval,	green	0 2	0 2
1 $\frac{1}{2}$ " beaded circle,	lilac	0 3	0 1
1 $\frac{1}{2}$ sch, plain circle.	purple	0 6	0 1

Denmark—continued.		Unused	Used	GAMBIA.		Unused	Used
		s. d.	n. d.			s. d.	n. d.
1/2 sch	carmine	0 4	0 2	4d	brown	1 0	
2 "	beaded circle, blue	0 6	0 4	4d	blue	1 6	
2 "	plain circle, "	0 6	0 6	GRANADA CONFEDERATION.			
4 "	pale brown	0 8	0 6	Issued 1859, large figures.			
ECUADOR.				5 cent	small oct	lilac	2 6
1/2 real	blue	1 0	0 8	5 "	"	brown	3 6
1 "	brown	3 0	2 0	10 "	"	yellow	5 0 5 0
1 "	green	2 6	1 0	10 "	"	orange	3 0
4 "	red	4 6	2 0	20 "	"	blue	6 6
EGYPT.				Issued 1860, small figures.			
5 paras (1866)	slate	0 2	0 2	2 1/2 cent	small oct	green	3 0
10 "	brown	0 3	0 2	5 "	"	lilac	3 6
20 "	blue	0 4	0 3	5 "	"	purple	3 6
1 piastre	lilac	0 6	0 3	5 "	"	blue	3 6
2 "	yellow	1 0	0 10	10 "	"	yellow	3 6 2 6
5 "	rose	2 0	1 6	10 "	"	brown	5 0
10 "	slate	3 6	1 6	10 "	"	cinnamon	2 6
5 paras (1867)	yellow	0 1	0 1	20 "	"	blue	3 0 2 0
10 "	lila	0 2	0 1	1 peso		carmine	10 0
20 "	green	0 3	0 2	1 "		rose on blue	6 6
1 piastre	rose	0 6	0 2	Issued 1861, large.			
2 "	blue	1 0	0 4	2 1/2 centavos		black	
5 "	brown	2 6		5 "		yellow	7 6 5 0
Officials for various towns,		0 6	0 4	5 "		buff	7 6
FRANCE.				10 "		blue	5 0
Republic, 1848.				20 "		red	10 0 6 6
10 centimes	yellow	2 6	0 8	1 peso		rose	21 0 15 0
15 "	green	3 6	0 6	Issued 1862, five stars above, four below.			
20 "	black	1 6	0 1	10 cent		blue	10 0
25 "	light and dark blue	2 6	0 1	20 "		rose	
40 "	orange	3 6	0 3	50 "		green	10 0
1 franc	carmine	5 0	0 8	1 peso		blue	15 0
1 "	vermillion			Issued 1863.			
Presidency, 1852.				5 cent	oct	buff	1 0 1 0
10 centimes	yellow	5 0	1 0	10 "		blue	2 0
25 "	blue	5 0	0 2	20 "		red	4 6
Empire, 1853.				50 "		green	
1 centime	olive	0 1	0 1	Issued 1864, ornaments in corners.			
2 "	marone	0 1	0 1	5 cent		yellow	1 0 0 6
4 "	puce	0 1	0 1	10 "		blue	1 6 0 6
5 "	green	0 1	0 1	20 "		red	2 0 1 3
10 "	yellow	0 2	0 1	50 "		green	4 6 3 6
20 "	pale blue	0 3	0 1	1 peso		violet	
20 "	indigo	1 0	0 2	Issued 1865.			
25 "	blue	5 0	0 2	1 cent		rose	0 2 0 2
40 "	orange	0 6	0 1	2 1/2 "	(triangular)	purple	0 5 0 4
80 "	rose	0 10	0 1	5 "		yellow and orange	0 9 0 5
1 franc	carmine			10 "		purple and lilac	1 6 0 4
Issued 1867, laureated head.				20 "		blue	2 0 1 0
1 centime	olive			50 cent (lrgs & sml figs)		green	7 0 3 6
5 "	green			1 peso		red	10 6 5 0
10 "	yellow	0 3	0 1	25 cents, Sobreporte		blue	4 0
20 "	blue	0 4	0 1	50 "		yellow	6 0
30 "	brown	0 6	0 1	1 peso		rose	10 0
40 "	orange	0 8	0 1	5 cents (R in centre)		black	1 0
80 "	rose	1 6	0 1	5 "	(A in centre)	"	1 0
5 francs	blue	6 0		Issued 1867.			
Unpaid letter stamps.				5 cent		yellow	0 9
10 centimes	black	0 3		10 "		violet	1 6 0 6
15 "	"	0 3		20 "		blue	2 0
10 "	die-printed "		5 0	50 "		green	7 6
FRENCH COLONIES.				1 peso		vermillion	10 0
1 centime	olive	0 1	0 1	5 "		black on green	
5 "	green	0 2	0 2	10 "		" on red	
10 "	yellow	0 3	0 2	25 cents, Sobreport		on buff	4 0
20 "	blue	0 5	0 4	50 "		on lt. & dk. green	6 0
40 "	vermillion	0 8	0 2	1 peso		on blue	10 0
50 "	rose	1 6	0 6	5 cent Issued 1867.		orange	0 0

Granada Confederation—cont.		Unused s. d.	Used s. d.
10 cents	violet	1 6	
20 "	blue		
ENVELOPE OFFICIALS.			
25 cents	brown	3 6	
50 "	"	6 6	
50 "	black	5 6	
Value not indicated	blue	3 6	
ANTIOQUIA.			
2½ centavos	blue		
5 "	green		
10 "	lilac		
10 "	brown		
1 peso	rose		
BOLIVAR.			
10 centavos	red	2 0	
1 peso	"	10 6	
GREAT BRITAIN.			
ADHESIVE STAMPS.			
1d V.R. Official Stamp	black		
1d	black	2 6	0 1
2d no lines	blue		0 3
6d octagonal	purple		0 2
16d "	brown	2 0	0 6
1s "	green		0 3
Old issue, without letters in angles.			
4d	rose	1 0	0 2
6d	lilac	1 0	0 2
1s	green	2 0	0 2
ENVELOPE STAMPS.			
Designed by Mulready.			
1d envelope	black	5 0	3 6
2d "	blue	5 0	3 6
1d cover	black	3 0	2 0
2d "	blue	5 0	3 6
Head of Queen, date not indicated.			
1d oval (silk thread)	pink	0 3	0 2
2d "	blue	1 0	
Date indicated, on white or blue paper.			
1d oval	pink	0 3	
2d "	blue	0 4	
8d	rose	0 6	
4d circular	vermillion	0 8	
6d oct	violet	1 0	
1s "	green	2 0	
COMPOUND ENVELOPE STAMPS.			
On white or blue paper.			
5d—1d and 4d, on same env.		1 6	
7d—2d and 5d	"	1 6	
7d—1d and 6d	"	2 0	
7d—3d and 4d	"	1 6	
8d—4d and 4d	"	1 6	
9d—3d and 6d	"	2 0	
10d—4d and 6d	"	2 0	
LOCAL STAMPS.			
50 varieties	for	3 6	
GREECE.			
Paris issue, without figures at back.			
1 lept	chocolate		0 8
2 "	bistre		0 6
5 "	green		0 6
20 "	blue		0 6
40 "	violet		0 9
80 "	rose		0 6
10 " (large figures)	orange		1 0
1 lept (Present issue.)	brown	0 1	0 1

Greece—continued		Unused s. d.	Used s. d.
2 lept	cinnamon	0 1	0 1
5 "	(figures at back) green	0 2	0 1
10 "	" yellow	0 3	0 2
10 "	" orange on blue	0 4	0 1
20 "	blue	0 5	0 1
40 "	violet	0 8	0 1
40 "	rose	1 6	0 3
80 "	rose	1 0	0 1
GRENADA.			
1d	green	0 2	0 2
6d	brick red and rose	1 0	0 2
HAMBURG.			
ADHESIVE STAMPS.			
½ schilling	black	0 1	0 1
1 "	brown	0 2	0 1
1½ "	purple and violet	0 3	0 1
1½ "	slate	0 3	0 3
2 "	red	0 3	0 2
2½ "	light and dark green	0 4	0 4
3 "	" " blue	0 5	0 2
4 "	green	0 6	0 2
7 "	orange	0 9	0 1
7 "	lilac	0 10	0 1
9 "	yellow	1 0	0 6
1½ "	(issued 1866) purple	0 4	0 3
1½ "	" rose	0 3	0 3
2½ "	(1867) green	0 6	
Value not indicated.	brown	0 2	0 1
ENVELOPE STAMPS.			
½ sch	black	0 2	
1½ "	lilac	0 3	
1½ "	rose	0 4	
2 "	orange	0 4	
3 "	blue	0 6	
4 "	green	0 8	
7 "	lilac	1 0	0 4
Complete set of 116 adhesive and envelope local stamps for			
		2 0	
HANOVER.			
ADHESIVE STAMPS.			
Issued 1851, coloured ground.			
1 guten gr	blue		0 4
1	green	1 0	0 2
1-30 thaler	brown & crimson	0 9	0 3
1-15 "	blue	1 0	0 3
1-10 "	orange	1 0	0 3
Issued 1858, diaper pattern.			
1 guten gr	green	0 9	0 2
1-30 thaler	rose	1 0	0 3
1-15 "	blue	1 0	0 3
1-10 "	yellow	1 0	0 3
3 pfennige	red	0 6	0 4
3 "	small diaper	2 0	
1-10 "	yellow	1 6	0 6
Issued 1859-60.			
3 pfennige	red	0 2	0 2
3 "	green	0 2	0 2
3 groschen	black	0 3	0 2
Issued 1861, head of King.			
1 groschen	rose and red	0 4	0 1
2 "	blue	0 6	0 1
3 "	yellow	2 6	0 4
3 "	brown	0 9	0 1
10 "	green	2 6	1 0
ENVELOPE STAMPS.			
Issued 1857.			
1 guten gros, oval	green	0 9	

On yellow, rose, or lilac paper double price

Hanover—continued.		Unused	Used.	India—Continued.		Unused	Used.
		s. d.	s. d.			s. d.	s. d.
1 silb gros	rose	1 0		½ anna service	lilac		2 0
2 silb gros	blue	1 6		2 " "	"		
3 silb gros	yellow	2 6		4 " "	"		
3 groschen	yellow	2 6		8 " "	"		
Issued 1862.				ENVELOPE STAMPS.			
1 gros, oval	rose	0 4	0 1	½ anna, circular	blue	0 4	0 8
2 " light & dark	blue	0 8	0 4	1 " "	brown	0 6	0 4
3 " "	brown	0 9	0 3	CASHMERE.			
Bestel Geld Frei, blue on				Circular	black		
yellow envelope		5 0	0 6	"	blue		
Bestel, bugle horn, green		0 6		"	red		
" horse		0 4		½ anna	black	0 4	
HELGOLAND.				½ " "	blue	0 6	
½ schilling	red and green	0 2		1 " "	"		
1 " "	"	0 4		1 " "	orange	2 0	
2 " "	"	0 6		2 " "	yellow	3 0	
6 " "	"	1 3		4 " "	green	5 0	
HOLLAND.				8 " "	red	7 6	
5 cents (1852)	blue	0 6	0 1	IONIAN ISLES.			
10 " "	red	0 6	0 1	Value not indicated	yellow	0 4	
15 " "	yellow	1 0	0 2	"	blue	0 6	
5 cents (1864)	blue	0 2	0 1	"	red	0 8	
10 " "	rose	0 4	0 1	ITALY.			
15 " "	yellow	0 6	0 1	Issued 1851.			
5 cents (1867)	cobalt	0 3	0 1	5 centimes	black	5 0	9 6
10 " "	carmine	0 5	0 1	20 " "	blue	4 6	0 9
15 " "	marone	0 7		40 " "	rose	7 6	6 0
20 " "	green	0 9		Issued 1852.			
25 " "	violet	1 0		5 centimes	green		5 0
50 " "	gold	2 0		20 " "	blue	2 6	1 0
1 " (1868)	black	0 1	0 1	40 " "	rose		2 6
1 " "	green	0 1		Issued 1855.			
1½ " "	rose	0 1		5 centimes	green		5 0
2 " "	yellow	0 1	0 1	20 " "	blue		0 9
HONG KONG.				40 " "	red		7 6
2 cents	brown	0 3	0 1	Issued 1856.			
4 " "	slate	0 4	0 1	5 centimes light & dk green		0 2	0 1
6 " "	lilac	0 6	0 1	10 " "	brown & slate	0 6	0 1
8 " "	yellow and orange	0 8	0 1	20 " "	light & dark blue	0 6	0 1
12 " "	blue	1 0	0 2	40 " "	red and rose	0 9	0 1
18 " "	violet	2 0	0 9	80 " "	yellow and orange	1 0	0 3
24 " "	green	1 6	0 1	3 lire	bronze	1 0	0 0
48 " "	rose	3 0	0 3	15 centimes (1863)	blue	0 6	0 2
50 " "	scarlet	2 0	0 2	15 " (1864)	"	0 4	0 1
96 " "	dark brown	7 6	0 2	Issued 1864.			
96 " "	yellow		0 6	1 centime	slate	0 1	0 1
HONDURAS.				2 " "	brown	0 1	0 1
2 reales, small	blue	1 6		5 " "	slate	0 1	0 1
2 " "	rose	1 6		10 " "	yellow	0 2	0 1
INDIA.				15 " "	blue	0 4	0 1
ADHESIVE STAMPS.				20 " "	"	0 4	0 1
Issued 1861.				30 " "	brown	0 5	0 1
½ anna	red			40 " "	rose	0 6	0 1
1 " "	blue	1 6	0 3	60 " "	lilac	0 8	0 1
1 " "	red	2 6	0 3	2 lire	scarlet	2 0	0 4
2 " "	green		0 3	Issued 1867.			
4 " oct (red border)	blue		0 3	20 cent (head in rectang.)	blue	0 4	0 1
Issued 1862-65.				For unpaid letters.			
½ anna	blue	0 4	0 1	10c oval (Sagna Tassa)	yellow	0 3	
1 " "	brown	0 6	0 1	10c	orange	0 6	
2 " "	rose		0 3	10c (1869)	brown	0 3	
2 " "	yellow and orange	0 9	0 1	Newspaper stamps.			
4 " "	black	0 9	0 1	1 centime	black	0 2	0 1
4 " "	green	1 6	0 1	2 " "	"	0 4	0 3
8 " "	rose	1 6	0 1	2 " "	yellow	0 2	0 1
8 " "	rose on blue	2 6	0 4	NEAPOLITAN PROVINCES.			
8 pics oct	purple	0 3	0 1	½ tornese	green	0 4	0 4
Issued 1866.				½ grano	brown	0 4	0 4
4 annas oct	dark green	1 6	0 1	1 " "	black	0 4	0 2
6 " "	green on purpl.	5 0	0 6	2 " "	blue	0 4	0 2
6 annas and 8 pics	slate	2 6	0 3	5 " "	lilac	3 6	1 0

Italy—continued		Unused	Used	Luzon—continued		Unused	Used
		s. d.	s. d.			s. d.	s. d.
NEAPOLITAN PROVINCES.							
5 gra	red	0 6	0 2	10 cuartos	carmine	15 0	
10 "	yellow	0 6	0 3	10 "	rose		
20 "	yellow	0 9	0 6	1 real fuerte	indigo	25 0	
50 "	slate	1 3		2 "	green	20 0	
50 "	slate blue	2 0		<i>Dotted circle.</i>			
50 "	purple	3 6		5 cuartos	orange		
JAMAICA.							
1d	blue	0 2	0 1	Issued 1859, "Correos Interior."			
2d	rose	0 4	0 2	5 cuartos	orange	5 0	
3d	green	0 6	0 2	5 "	scarlet	5 0	
4d	orange	0 8	0 3	10 "	carmine		
6d	grey	1 6	0 3	Issued 1863, smaller letters.			
6d	lilac	1 0	0 2	5 cuartos	vermillion	2 0	
1s	light and dark brown	2 6	0 2	10 "	rose	3 6	
JAVA AND DUTCH INDIES.							
10 cents	carmine	0 9	0 6	1 real	violet	25 0	
LIBERIA.							
6 cents	red	0 8		2 "	blue	15 0	
12 "	blue	1 0	0 9	1 real Plata f	yellow-green	5 0	2 6
24 "	green	2 0	1 0	1 "	olive	5 0	
LUBECK.							
ADHESIVE STAMPS.							
Issued 1859.							
$\frac{1}{2}$ schilling	violet	0 3		Issued 1864.			
1 "	yellow	0 4		3½ peso fuerte	black	0 9	
1 "	orange	5 0		6 2-8c "	green	1 0	0 9
2 "	brown	0 8		12 4-8c "	blue	2 6	1 0
2½ "	rose	0 9		25c "	scarlet	2 6	1 6
4 "	green	1 0		MADEIRA.			
Issued 1863.							
$\frac{1}{2}$ schilling, oval,	green	0 2	0 1	5 reis	black	0 2	
1 "	orange	0 3	0 2	10 "	yellow	0 2	
1½ "	brown	0 4	0 2	20 "	straw	0 3	
1½ "	lilac	0 4	0 3	25 "	rose	0 4	
2 "	rose	0 5	0 4	60 "	green	0 8	
2½ "	blue	0 7		80 "	orange	0 9	
4 "	pale brown	0 9	0 4	100 "	lilac	1 0	
ENVELOPE STAMPS.							
$\frac{1}{2}$ schilling, oval,	green	0 2		120 "	blue	1 3	0 3
1 "	orange	0 4		MALTA.			
1½ "	lilac	0 4	0 3	½d	buff	0 2	
2 "	rose	0 6	0 4	½d	straw	0 1	
2½ "	blue	0 7		MAURITIUS.			
4 "	pale brown	0 9	0 4	ADHESIVE STAMPS.			
Issued 1852, head.							
10 centimes	black	4 0	0 2	<i>Wood-blocks.</i>			
1 silb groschen	red	5 0	0 4	1d large	orange		7 6
1 "	rose	5 0	0 6	2d	light blue		6 6
1 "	orange	7 6	1 0	2d crossed lines	dark blue		
Issued 1863-66, arms.							
1 centime	buff	0 1		1d small	red		10 0
1 "	brown	0 1		1d	orange		15 0
2 "	black	0 2		2d	blue		6 6
4 "	yellow	0 2		<i>Britannia, seated.</i>			
10 "	blue	0 4	0 3	Value not indicated	scarlet	7 6	
10 "	lilac	0 3	0 2	"	blue	7 6	
12½ "	rose	0 3	0 3	"	magenta	7 6	3 6
20 "	brown	0 6		"	red on blue	7 6	
25 "	brown	1 0			green		12 6
25 "	blue	0 6		6d	blue	5 0	0 6
30 "	violet	0 9		6d	purple	5 0	3 6
37½ "	green	1 0		6d	brown	5 0	
37½ "	stone	1 0		1s	scarlet		1 0
40 "	orange	1 0	0 6	1s	light and dark green		2 0
LUZON (Philippine Islands).							
Issued 1854.							
Head of Queen, in beaded circle				Issued 1861, head of Queen.			
5 cuartos	red			1d	brown	0 3	0 2
				2d	blue	0 4	0 2
				3d	scarlet	0 8	0 6
				4d	rose	0 9	0 2
				6d	lilac	1 0	0 4
				6d	green	1 6	0 3
				9d	purple	1 6	0 4
				1s	green		2 6
				1s	yellow	2 0	0 3
				1s	yellow-brown		0 6
				5s	mauve	10 0	1 6
				ENVELOPE STAMPS.			
				6d circular	mauve	1 3	
				9d nine-sided	brown	1 6	
				1s oval	orange		

MECKLENBURG SCHWERIN.		Unused s. d.	Used s. d.
ADHESIVE STAMPS.			
$\frac{1}{2}$ schilling, small,	red	0 2	0 2
2 " (white centre)	"	0 1	0 1
4 " mauve	"	0 6	0 4
3 " yellow	"	0 6	0 2
5 " blue	"	1 3	0 9
5 " brown	"	0 9	0 6
ENVELOPE STAMPS.			
1 schilling, oval,	red	0 2	0 1
1 $\frac{1}{2}$ " "	green	0 3	0 3
2 " "	mauve	0 6	0 4
3 " "	yellow	0 6	0 3
5 " "	blue	1 6	0 9
5 " "	brown	0 9	0 6
MECKLENBURG STRELITZ.			
ADHESIVE STAMPS.			
$\frac{1}{2}$ silb gros	orange	0 1	
$\frac{1}{2}$ " "	green	0 2	
1 schilling	mauve	0 3	
1s. gros, oct	rose	0 3	
2 " "	blue	0 6	
3 " "	brown	0 8	
ENVELOPE STAMPS.			
1 silb gros, oct	rose	0 3	
2 " "	blue	0 6	
3 " "	brown	0 8	
MEXICO.			
Issued 1856, head.			
$\frac{1}{2}$ real	brown	5 0	3 6
$\frac{1}{2}$ " "	blue	2 6	1 0
1 " "	yellow	3 6	0 8
1 " "	green	3 0	0 8
2 " light and dark	green	2 0	0 8
2 " "	rose	3 0	0 8
4 " "	red on yellow		1 0
4 " "	red on white		3 6
4 " "	black on yellow		
8 " "	green on brown		1 0
8 " "	brown		3 6
8 " "	violet		
$\frac{1}{2}$ real Eagle in centre.	blue	1 6	1 0
$\frac{1}{2}$ " "	brown	1 6	1 0
1 " "	blue	2 0	0 9
2 " "	yellow	2 0	0 4
4 " "	green	3 0	0 6
8 " "	scarlet	5 0	0 6
3 centavos	brown	3 0	
Issued 1868, head of Emperor.			
7 centavos	violet and grey	4 0	3 0
13 " "	light and dark blue		3 0
25 " "	light and dark yellow		1 0
50 " "	light and dark green		1 6
Issued 1867.			
$\frac{1}{2}$ real	indigo on blue	5 0	2 6
2 " "	green on blue		2 6
4 " "	rose on blue		2 6
Issued 1868, black on colour.			
6 cents	brown	1 0	1 0
12 " "	green	2 0	1 6
25 " "	rose		1 6
50 " "	yellow		1 6
100 " "	brown		1 6
MODENA.			
Poste Estensi.			
5 cents	green	0 6	0 2
9 " B.G.	violet	0 9	0 3
10 " "	rose	0 6	0 2
10 " "	lilac	0 9	0 3
15 " "	yellow	0 6	0 2

Modena—continued.		Unused s. d.	Used s. d.
25 cents	pale brown	0 6	0 2
30 " "	blue	0 6	0 3
10 " TASSA GAZETTE,	black	1 0	
1 lira Provisional Government.	white	1 0	
5 cents	green	0 6	0 6
15 " "	brown	0 9	
20 " lilac and purple	"	0 6	0 6
40 " "	red	0 9	
80 " "	yellow	0 9	
MOLDAVIA.			
5 paras	black	0 9	
40 " "	blue	1 6	
51 " oval	green	2 0	
80 " "	red	1 0	
81 " oval	blue	2 0	
105 " "	rose	2 6	
MOLDO WALLACHIA.			
Arms.			
3 paras	yellow	0 6	
3 " "	orange	0 6	
6 " "	rose	1 0	6 4
30 " "	blue	1 6	0 4
Head of Prince Couza.			
2 paras (small head)	lemon	1 6	
5 " "	blue	1 6	
20 " "	red	2 6	
2 " (head larger)	yellow	1 6	
2 " "	orange	0 2	
5 " "	blue	0 3	0 2
20 " "	red	0 8	0 6
Head of Prince Charles.			
2 paras (1866)	black on yellow	0 1	0 1
5 " "	black on blue	0 3	0 2
20 " "	black on rose	0 6	0 4
2 bani (1868)	yellow on white	0 2	
4 " "	blue on white	0 3	
18 " "	rose on white	0 9	
3 " (1869)	orange	0 2	
10 " "	blue	0 3	
15 " "	rose	0 4	
25 " "	orange and blue	0 9	0 3
50 " "	blue and red	1 6	0 6
"Too late" stamps.			
10 soldi	violet	1 3	0 6
10 " "	green		0 6
17 " "	vernal on	1 6	1 0
MONTE VIDEO.			
ADHESIVE STAMPS.			
First issue, wood block.			
120 centesimos	blue		0 3
180 " "	green	1 3	
240 " "	red	1 0	
60 centavos, "Diligencia."			
	blue		
80 " "	green	1 6	
1 real	red	1 0	
Second issue.			
60 centesimos	violet	0 6	0 4
60 " "	brown	1 0	0 6
80 " "	orange	1 0	0 9
100 " "	carmine		2 6
100 " "	rose	1 3	1 0
100 " "	brown	2 0	1 6
120 " "	blue	1 3	0 6
180 " "	green	1 6	
240 " "	red	2 0	
Issued 1864, "Republica Oriental."			
66 centesimos	rose	1 0	0 6

C. & H. Glyn's Packets of Stamps.

All Stamps in these Packets are guaranteed genuine, and none contain duplicates.

SIXPENNY PACKETS.—Post-free, 7d. each.

- No. 1 contains 12 varieties of unused stamps, including Egypt, Bergedorf, newly issued Canadian, and N. Germon, New Brunswick, etc.
- No. 2 contains 50 varieties of used stamps, including Canada, Schleswig-Holstein, Egypt, Russia, Wurtemberg (figure,) etc.
- No. 3 contains 12 varieties of Colonial stamps, including Antigua, Barbados, British Guiana, Canada, Natal, Hong Kong, New Brunswick, etc.
- No. 4 contains 12 varieties of local stamps, including Aberdeen, Dundee, Edinburgh, Hamburg, London, and United States.
- No. 5 contains 20 different obsolete stamps, including Austrian (Mercury), Baden (figure), Egypt, French Republic, Papal States, Spain (1853), Wurtemberg (figure), etc.
- No. 6 contains 25 varieties, including Austria (1867), Austrian Italy, Barbados, Schleswig and Holstein, Mecklenburg, Oldenburg, Prussian States, etc.

SHILLING PACKETS.—Post-free 1s. 1d. each.

- No. 1 contains 20 varieties of unused stamps, including Austria (Mercury), Barbados, Egypt, Heligoland, Mecklenburg, Chili, Papal States, Spanish, etc.
- No. 2 contains 50 varieties of used stamps, including the newly issued Austrian, Bavarian, Norway, Canada, also Schleswig and Holstein, Hamburg, Mecklenburg, New Brunswick, Oldenburg, Papal States, Russia, U.S. envelope, etc.
- No. 3 contains 20 varieties of Colonial stamps, including Antigua, Barbados, Ceylon, Newfoundland, Orange River, Trinidad, etc.
- No. 4 contains 20 varieties of local stamps, including several rare kinds.
- No. 5 contains 20 obsolete varieties, including Brazil (Italic figures), Brunswick, French Republic, Oldenburg (1852), Spain (1852 and 1853), etc.
- No. 6 contains 30 varieties, including Bavaria (for returned letters), Schleswig, Egypt, French Colonies, Holstein, Argentine, Mecklenburg envelope; the 1867 issues of Austria, Bavaria, Norway, Prussian States, etc.

HALF-CROWN PACKETS.—Post-free 2s. 7d.

- No. 1 contains 100 varieties of used and unused stamps, including Argentine Republic, Barbados, Brazil (Italic figures), octagonal Ceylon, old and new Papal States, Finland, Venezuela, etc.
- No. 2 contains 30 varieties of unused stamps, including Austria and Austrian Italy (1867), Munich, Ceylon envelope, Schleswig-Holstein (1849), Montevideo, New Brunswick, Papal States, Servia (head and arms), Spain (1867), Roumania, Chili, etc.

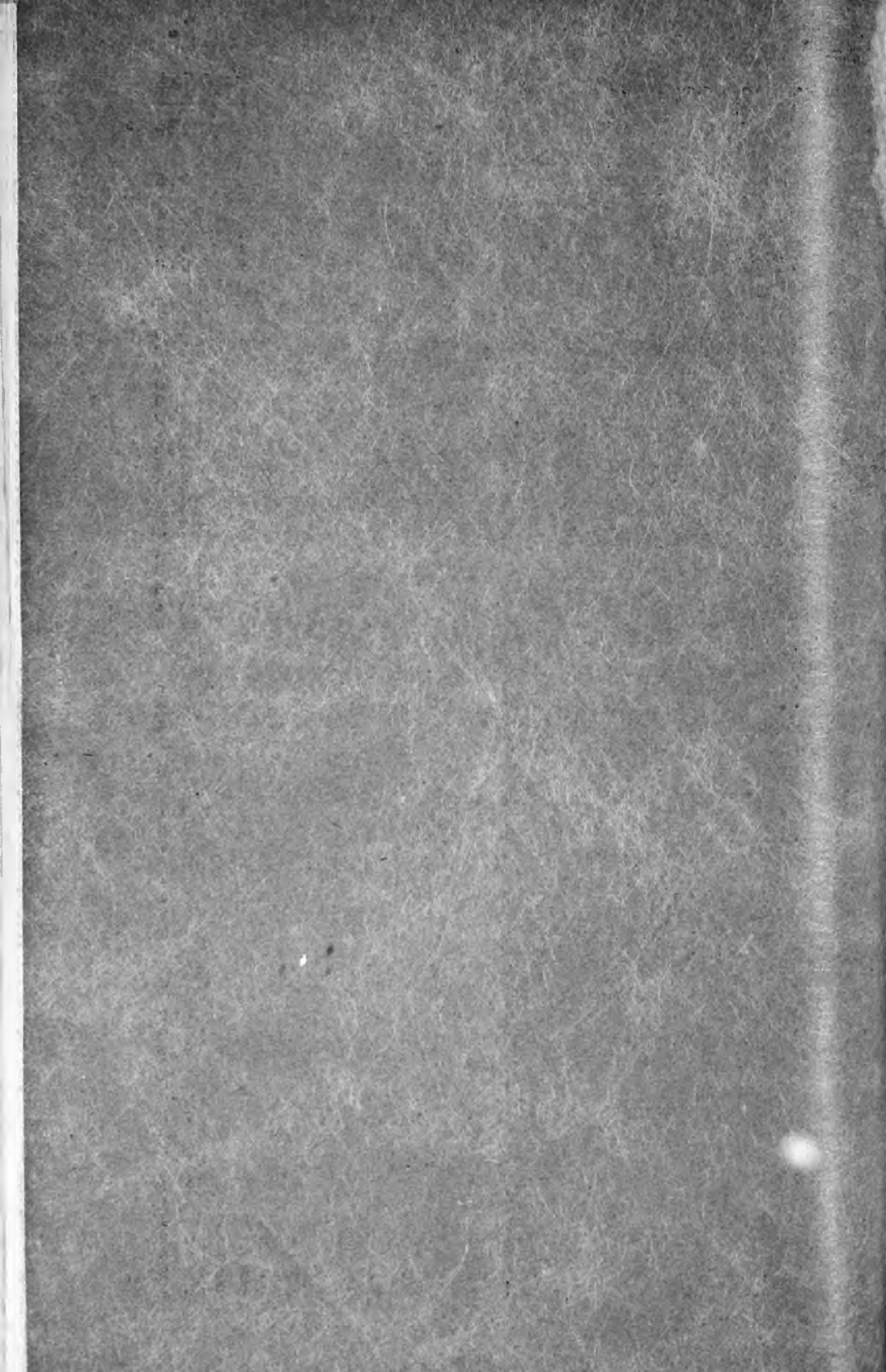
FIVE SHILLING PACKETS.—Post-free, 5s. 1d.

- No. 1 contains 200 varieties, including many rare kinds.
- No. 2 contains 50 varieties, all unused, including Argentine (1867), Indian envelope, Cuba (1867), Finland, Sandwich Islands, Shanghai, Newfoundland, etc.
- No. 3 contains 30 obsolete varieties, used and unused, including (*no stamp priced less than 2d. in the list*) Argentine, Brazil (Italic figures), 30 and 50 reis, Montevideo, Granada Confederation, Moldo-Wallachia (arms) 30 paras blue, and set of 3 (head of Couza), Schleswig-Holstein (1849), old 3d. Nova Scotia, etc.

THE TEN SHILLING PACKETS.—Post-free, 10s. 1d.

- No. 1 contains 200 varieties (*a large number being unused*), including Argentine, rare Brazilian, B. Columbia, Ceylon (octagonal, new issue, and envelope), Granada Confederation, Montevideo, Nicaragua, Newfoundland, Prussian Official Finland, Sandwich Islands, Straits Settlements, rare Spanish and Cuba, etc.
- No. 2 contains 50 varieties (*none priced less than 3d. in the list*), including rare Argentine, Brazil, Chili, Montevideo, Peru, Granada Confederation, Salvador, several rare Spanish, Cuba, etc.

For contents of Guinea and Five Guinea Packets, see cover.



Monte Video—continued.		Unused	Used
		s. d.	s. d.
08 centesimos	green	1 6	0 9
10 "	yellow	1 6	0 9
12 "	blue	1 0	0 6
Issued 1866, figure in centre.			
5 centesimos	blue	0 4	0 2
10 "	green	0 6	0 4
15 "	yellow	0 9	0 9
20 "	rose	1 0	0 9
1 "	black	0 2	
ENVELOPE STAMPS.			
5 centesimos, oval	blue	0 9	0 6
10 "	green	1 6	
NATAL.			
1d <i>Crown in relief.</i>			
1d	pink	5 0	
1d	blue	5 0	
1d	yellow	5 0	
3d	pink	5 0	3 6
6d	green	5 0	12 6
9d.	blue	7 6	
1s	yellow	10 0	
1d <i>Head of Queen.</i>			
1d	red and rose	0 3	0 2
3d	blue	0 8	0 2
6d	grey	2 6	0 4
6d	lilac	1 0	0 2
1s	green	2 6	0 4
NEVIS.			
1d	lake	0 4	
1d	scarlet	0 2	
4d	pale rose	1 6	
4d	orange	1 0	
6d	grey	1 0	1 0
1s	light and dark green	2 6	1 6
NEW BRUNSWICK.			
Old issue.			
3d	red on blue		0 8
3d	red on white		1 0
6d	yellow		7 6
1s	violet		
Present issue.			
1 cent, steam-engine,	brown	0 3	
1 "	mauve	0 2	0 1
2 "	head of Queen, orange	0 2	0 2
5 "	light green	0 4	0 1
5 "	dark green	2 0	0 3
10 "	vermilion	0 9	0 2
12½ "	steamship	0 9	0 2
17 "	head of Prince of Wales	1 3	0 6
NEW CALEDONIA.			
10 centimes	grey	5 0	
10 "	black	3 0	
NEWFOUNDLAND.			
First issue.			
1d	brown-violet	0 3	0 3
1d	brown	1 6	
2d	orange	2 0	2 0
4d	"		10 6
5d	brown-violet	5 0	3 6
6d	orange		5 0
6½d	"		
8d	"	2 6	
1s	"		
Second issue.			
2d	rose	0 8	
3d triangular	green	1 0	0 9
4d	rose	1 3	0 9
5d	brown	2 0	
6d	rose	2 0	0 6
6½d	"	2 6	

Newfoundland—continued.		Unused	Used
		s. d.	s. d.
8d	rose	5 0	
1s	"	3 6	2 0
New issue, 1866.			
2 cents (fish)	green	0 2	
5 " (seal)	brown	0 6	0 5
5 "	black	0 6	
10 "	(Prince of Wales) blk	0 10	0 4
12 "	(head of Queen) red	1 0	0 2
13 "	(ship) yellow	1 3	0 6
24 "	(head of Queen) blue	1 9	0 6
1 "	(Pr. of Wales) mauve	0 2	
NEW SOUTH WALES.			
View of Sydney.			
1d	red		3 0
1d (no clouds)	"		5 0
2d	neutral		2 0
2d	blue		2 0
2d (vertical lines)	"		4 0
3d	green		2 0
Laureated head of Queen.			
1d on blue paper	carmine		2 6
1d "	orange		2 6
2d "	blue		0 8
3d "	green		2 0
6d "	brown		3 6
8d "	orange		
1d on white paper	lake		1 6
1d "	orange		1 0
2d "	cobalt		0 6
2d "	blue		0 4
3d "	light & dark green		0 6
6d "	brown		
8d "	orange		
Diademed head.			
1d	red and yellow	0 6	0 2
2d	light and dark blue	0 6	0 2
2d	(over-arched) "	0 4	0 1
3d	light and dark green	0 6	0 2
5d	dark green	1 6	1 0
5d	light green	1 0	0 6
6d	cinnamon		0 4
6d	violet	1 0	0 1
6d	slate green		0 6
6d	brown		0 4
8d	orange	1 6	0 8
1s	red		0 4
1s	rose	2 0	0 1
5s circular	violet	10 0	0 9
For registered letters.			
Value not indicated, oval (6d			
	yellow and blue		5 0
	red and blue	1 6	0 6
Issued 1864.			
1d	red and brown	0 3	0 2
1d envelope	red		0 2
1d " oval, red on white		0 3	0 3
4d (1868)	brown	1 0	
10d "	lilac	2 0	0 6
NEW ZEALAND.			
1d	On blue paper. red		7 6
2d	blue		2 6
1s	green		7 6
On white paper.			
1d	vermilion and orange	0 3	0 1
2d	light and dark blue	0 4	0 1
3d	violet	1 0	0 4
4d	rose		0 9
4d	yellow	1 0	0 6
6d	yellow-brown	2 6	0 2
6d	light and dark brown	1 0	0 1

New Zealand—con.		Unused s. d.	Used s. d.	Oldenburg—continued.		Unused s. d.	Used s. d.
6d	black		1 0	ENVELOPE STAMPS.			
1s	light and dark green	2 0	0 2	Issued 1858.			
1s	blue-green		0 6	$\frac{1}{2}$ gr, oval	brown	1 6	
NICARAGUA.				1 "	blue	1 0	
2 centavos,	blue	0 4	0 4	2 "	rose	1 6	
5 "	black	0 8	0 6	3 "	yellow	2 6	
10 "	red	1 3		Issued 1862.			
25 "	blue-green	2 6		$\frac{1}{2}$ gr, oval	orange	0 2	0 2
NORWAY.				1 "	rose	0 2	0 1
Issued 1855, lion.				2 "	blue	0 4	0 3
4 skilling	blue	2 6	0 2	3 "	brown	0 6	0 3
Issued 1856, head of king.				ORANGE FREE STATE.			
2 skilling,	yellow	0 4	0 2	1d	brown	0 2	
3 "	lilac	0 4	0 1	6d	rose	1 0	
4 "	blue	0 6	0 2	1s	yellow	2 6	
8 "	rose	1 0	0 1	OTTOMAN EMPIRE.			
Issued 1863, shield.				First issue.			
2 skill,	yellow	0 2	0 1	20 paras, large	yellow	0 6	0 6
3 "	lilac	0 4	0 3	1 piastre	lilac	0 9	0 6
4 "	blue	0 4	0 1	2 "	blue	1 6	1 0
8 "	rose	0 8	0 1	5 "	rose	2 0	1 6
24 "	brown	2 0	0 2	20 paras (for Constantinople only)	brown	0 8	
1 " (1867)	black	0 2		1 piastre	"	1 0	
2 " "	orange	0 3	0 1	2 "	"	2 6	
3 " "	lilac	0 4	0 3	5 "	"	3 6	
4 " "	blue	0 4	0 1	Issued 1865.			
8 " "	lake	1 0	0 1	10 paras	green	0 2	0 2
For Throndjems	brown	0 2		20 "	yellow	0 3	0 2
" Bergens	"	0 3		20 "	brown	0 5	0 3
" " 2 skill.	rose	0 3		1 piastre	"	0 6	0 3
NOVA SCOTLA.—Old Issue.				1 "	lilac	0 5	0 3
1d	brown	2 6	1 6	2 "	blue	0 10	0 4
3d	blue on white	1 0	0 3	2 "	brown	1 0	0 6
1d	blue on blue	2 6	0 3	5 "	"	2 0	0 9
6d	light green	4 0	1 6	5 "	rose	1 9	0 6
6d	dark green	6 6	2 6	25 "	orange	10 0	
1s	violet			25 "	brown	10 0	
Present issue				5 paras, Issued 1866.	blue	0 2	0 2
1 cent	black	0 2	0 1	20 "	green	0 4	0 3
2 "	lilac	0 2	0 2	40 "	rose	0 8	
6 "	blue	0 3	0 1	20 " (1866)	green	0 4	
8 $\frac{1}{2}$ "	green	0 9	0 6	Issued 1869			
10 "	red	0 9	0 2	10 paras	lilac	0 2	
12 $\frac{1}{2}$ "	black	0 0	0 2	20 "	green	0 4	
OLDENBURG.				1 piastre	yellow	0 6	
ADHESIVE STAMPS.				2 "	vermillion	1 0	
Issued 1852, black on colour.				5 "	blue	2 0	
$\frac{1}{2}$ silb gros, square,	green	3 6	2 6	25 "	yellow	10 0	
1-30th thaler	blue	2 0	0 2	Local Post, circular, on rose, blue, white, yellow, and green paper			
1-15th "	rose		0 6	each		0 6	
1-10th "	yellow		0 9	PAPAL STATES.			
Issued 1858, black on colour.				$\frac{1}{2}$ bajocco, oval (1852)	grey	1 0	0 4
$\frac{1}{2}$ groschen	green	3 6	2 6	1 "	purple	0 2	0 2
1 "	blue	0 2	0 2	1 "	brown	0 2	
2 "	rose		1 0	1 "	green	0 2	0 1
3 "	yellow		1 6	2 "	light and dark green	0 3	0 1
Issued 1860, colour on white.				3 "	brown	0 6	0 2
$\frac{1}{4}$ groschen	yellow	0 4		3 "	yellow-brown	0 3	0 3
$\frac{1}{8}$ "	green	1 0	0 9	4 "	brown		0 4
$\frac{1}{16}$ "	brown	1 6	1 0	4 "	yellow	0 6	0 3
1 "	blue	1 6	0 6	5 "	red and rose	0 6	0 1
2 "	red	2 0	1 0	6 "	white	0 8	0 2
3 "	yellow	3 0	1 0	6 "	blue		0 4
Issued 1862.				7 "	blue	0 9	0 2
$\frac{1}{2}$ gr, oval	green	0 1	0 1	8 "	white	0 9	0 1
2 "	orange	0 2	0 1	50 "	blue	3 0	1 6
1 "	rose	0 2	0 1	1 scudo	scarlet	6 0	3 6
2 "	blue	0 4	0 2	2 centesimi (1867)	green	0 2	0 1
3 "	brown	0 6	0 2				

Papal States—continued		Unused s. d.	Used s. d.
3 centesimi (1867)	grey	0 2	
5 "	pale blue	0 2	0 2
10 "	vermilion	0 4	0 2
20 "	crimson	0 6	0 2
40 "	yellow	1 0	0 4
80 "	rose	1 6	
PARMA.			
"Stati Parm.," colour on white.			
6 centes	yellow		1 0
15 "	red		0 4
25 "	red-brown		0 6
<i>black on colour.</i>			
5 centes	yellow	0 4	0 3
10 "	white	0 4	0 3
15 "	rose	1 6	0 3
25 "	purple	3 6	0 3
40 "	blue	5 0	1 6
<i>"Due di Parma."</i>			
15 centes	light and dark red	0 6	0 6
25 "	light and dark brown	0 6	0 6
40 "	blue	0 9	
<i>"Stati Parmensi."</i>			
Provisional Government.			
5 cents, light and dark	green	1 0	
8 "	rose	1 0	1 0
9 "	blue	0 6	
10 "	brown	0 6	
20 "	blue	0 6	0 6
40 "	rose	1 0	
80 "	yellow	2 6	
PERU.			
First issue, large letters and double lines.			
1 dinero	pale blue		3 6
1 peseta	pale rose		7 6
1 "	orange		
1 peso	yellow		
<i>Small letters.</i>			
1 dinero	deep blue	1 0	0 9
1 "	pale blue		0 6
1 peseta	red	2 0	1 3
1 dinero (cornucopia on white)	blue		5 0
1 peseta	red		5 0
Second issue, arms embossed.			
1 dinero	rose	1 0	0 6
1 "	red	0 6	0 3
1 "	green		0 6
1 peseta	brown	1 0	0 6
5 centavos (1866)	green	0 6	0 4
10 "	scarlet	1 0	0 8
20 "	brown	2 0	1 0
Pacific Steam Navigation Co.'s stamps, nine varieties, from			
		3 0	
PORTUGAL.			
Head of Donna Maria II.			
5 reis	cinnamon		3 6
5 "	dark brown	3 6	
25 "	blue	1 6	0 3
50 "	green	5 0	
100 "	lilac	7 6	
Head of Don Pedro V.			
5 reis	cinnamon		0 4
5 "	dark brown	0 9	0 3
25 "	blue	0 9	0 2
25 "	(hair parted)	5 0	0 6
25 "	rose	0 9	0 2
50 "	green	3 0	0 4
100 "	lilac	3 6	0 6

Portugal—continued		Unused s. d.	Used s. d.
Head of Don Luis I.			
5 reis	brown	0 1	0 1
10 "	orange	0 2	0 1
25 "	rose	0 3	0 1
50 "	green	0 8	0 3
100 "	lilac	1 0	0 3
New Issue, 1866.			
Head of Don Luis I.			
5 reis	black	0 1	0 1
10 "	yellow	0 2	0 1
20 "	straw	0 3	0 2
25 "	rose	0 4	0 1
50 "	green	0 8	0 4
80 "	orange	0 9	0 4
100 "	lilac	1 0	0 6
120 "	blue	1 0	0 1
PR. EDWARD ISLAND.			
1d	yellow	0 2	
2d	rose	0 4	
3d	blue	0 5	0 3
4d	black	0 8	
6d	green	1 0	0 6
9d	lilac	1 0	0 6
PRUSSIA.			
ADHESIVE STAMPS.			
Issued 1850, head of king, <i>black on colour.</i>			
1 silb groschen	rose	1 0	0 1
2 "	blue	1 6	0 1
3 "	yellow	1 6	0 1
4 pfennige	green on white	1 0	0 4
6 "	orange on white	1 0	0 2
Issued 1857, on plain ground.			
1 silb gros	rose		0 2
2 "	blue		0 4
3 "	orange		0 8
Issued 1858, on ground of <i>horizontal and perpendicular lines.</i>			
4 pfennige	green	0 9	0 2
1 silb gros	rose	0 6	0 1
2 "	blue	0 8	0 1
3 "	yellow	1 0	0 1
Issued 1861, eagle.			
3 pfennige oct	violet	0 1	0 1
4 "	green	0 1	0 1
6 "	vermilion	0 2	0 1
1 silb gros, oval	rose	0 2	0 1
2 "	light and dark blue	0 3	0 1
3 "	brown	0 4	0 1
Official Stamps.			
10 silb gros	rose		0 6
30 "	blue		0 9
ENVELOPE STAMPS.			
Head of King.			
<i>Silk thread across stamp.</i>			
1 silb gros, oval	rose	1 0	0 4
2 "	blue	1 6	0 6
3 "	yellow and buff	1 6	0 4
<i>Without silk thread.</i>			
1 silb gros, oval, red and	rose	0 6	0 2
2 "	light and dark blue	0 6	0 2
3 "	yellow and buff	0 8	0 2
4 "	brown	3 6	2 0
5 "	lilac	2 0	0 6
6 "	green	5 0	3 0
7 "	vermilion	3 0	1 6
Issued 1863, eagle. <i>Inscription to right.</i>			
1 silb gros, oval	rose	3 5	0 4

Prussia—continued		Unused s. d.	Used s. d.
2 silb gros,	blue	3 6	0 4
8 "	brown	3 6	0 4
Issued 1864.			
<i>Inscription across stamp.</i>			
1 silb gros, oval	rose	0 2	0 1
2 "	light and dark blue	0 3	0 1
3 "	brown	0 4	0 1
3 pfennige, oct. (1867)	violet		
6 "	orange		
QUEENSLAND.			
1d	rose	0 6	0 3
1d	orange	0 2	0 1
2d	blue	0 4	0 1
3d	brown	0 6	0 3
4d	mauve	1 0	0 6
6d	light green	1 0	0 2
6d	dark		0 4
1s	purple		1 0
1s	brown	2 0	0 3
5s	rose	10 6	2 6
Registered	maize	2 0	1 6
"	yellow	1 6	0 9
REUNION.			
15 centimes	black	7 6	
30 "	"	7 6	
ROMAGNA.			
1 bajocco	yellow	0 8	
1 "	slate	0 6	
2 "	yellow	0 6	
3 "	green	0 6	
4 "	brown	0 6	
5 "	purple	0 6	
6 "	green	0 8	
8 "	rose	0 8	
20 "	blue	0 8	
RUSSIA.			
ADHESIVE STAMPS.			
Issued 1858.			
5 kopecs	blue-black	0 6	0 1
10 "	brown, centre blue	1 0	0 2
20 "	blue, centre orange	1 6	0 2
30 "	rose, centre green		
1 kop	Issued 1864. yellow	0 1	0 1
3 "	green	0 3	0 1
5 "	blue	0 4	0 2
Issued 1866, for Levant postage only.			
6 kop	blue	2 0	
10 paras	red	0 3	
2 piastres	blue	1 0	
1 kop (1868)	brown, centre red	0 2	
3 "	green, " green	0 4	
5 "	blue, " blue	0 6	
10 "	rose, " green	1 0	
ENVELOPE STAMPS.			
5 kop circular (1845)	blue	0 6	
10 "	black	0 6	0 4
20 "	blue	1 9	
30 "	rose	2 6	
5 " small oval (1869)	blue	0 6	
10 "	brown	0 9	
20 "	blue	1 9	
30 "	rose	2 6	
FINLAND.			
ADHESIVE STAMPS.			
Issued 1856.			
5 kopecs oval	blue		
10 "	red		
Issued 1860.			
5 kop rectangular	blue	0 5	0 3

Russia—continued.		Unused s. d.	Used s. d.
10 kop rectangular	rose	0 7	0 3
Issued 1856.			
5 pennia	brown	0 4	0 3
8 "	green	0 4	0 3
10 "	buff	0 5	0 3
20 "	blue	0 10	0 4
40 "	pink	1 0	0 6
1 mark	brown	3 0	
Returned letter stamps.			
10 pen oval	green and red	0 6	
10 "	brown and blue	0 6	
12 "	green and blue	0 9	
ENVELOPE STAMPS.			
Issued 1845, "Porto Stempel."			
10 kop oval	rose	5 6	
20 "	black	7 6	
Issued 1856.			
5 kop oval	blue	2 6	
10 "	rose	1 6	
20 "	black	2 6	
Issued 1860.			
5 kop rect	blue	1 0	1 0
10 "	rose	1 0	1 0
POLAND.			
ADHESIVE STAMP.			
10 kop	blue and rose	1 0	0 6
ENVELOPE STAMPS.			
14 kop circular	red	7 6	
3 "	blue	0 8	
10 "	black	1 6	
Oblong	WENDEN. green	0 6	
"	rose		
Rose	centre green	2 0	
"	arms in centre	1 0	
ST. HELENA.			
1d	red	0 2	0 2
2d	lemon	0 4	
3d	purple	0 6	
4d	carmine	0 8	0 6
6d	blue	1 0	0 9
1s	green	1 9	0 6
5s	orange		
ST. LUCIA.—Issued 1859.			
(1d)	red	0 4	
(3d)	light and dark blue	3 6	
(6d)	light and dark green	3 6	
(1d)	Issued 1864. black	0 2	0 2
(4d)	yellow	0 9	0 6
(6d)	blue	1 0	0 6
(1s)	orange	2 0	0 9
1d	ST. VINCENT. rose	0 2	0 2
4d	blue	2 0	
4d	orange	1 0	
6d	green	1 0	0 3
1s	purple	3 6	1 0
1s	brown	2 6	
ST. THOMAS.			
3 cents	red on brown	0 4	0 4
5 "	rose on white	0 6	
ST. DOMINGO & HAITI.			
1 real, square,	rose		3 6
1 "	yellow		
1/2 "	rect. rose	2 0	2 0
1/2 "	yellow		3 0
1/2 "	blue	1 0	
1/2 "	green	2 6	
1 "	rose	2 6	
1 "	green	1 6	1 6
1 "	blue	2 6	
1 "	magenta	1 6	
1 "	dark blue		2 6

SANDWICH ISLANDS.		Unused	Used
Issued 1853, head of Kamehameha III.		s. d.	s. d.
5 cents	blue on white	2 6	
5 "	blue on blue	1 9	
13 "	vermillion	5 0	
Issued 1859-65, figure of value in centre.			
1 cent	blue on blue		
2 "	"		
1 "	black on blue	2 0	
2 "	"	5 0	
1 "	black on white	0 3	
2 "	"	0 4	
1 "	blue on white	0 4	
2 "	"	0 6	
5 "	(provisional) blue	1 3	
2 "	head of Kamehameha IV rose	1 6	
Issued 1864-65, head of Kamehameha V.			
2 cents	vermillion	0 4	
5 "	indigo	1 0	
SALVADOR.			
¼ real	blue	1 0	
1 "	red	2 6	0 6
2 "	green	3 6	0 8
4 "	brown	5 0	1 6
SARAWAK.			
3 cents	brown on yellow	0 8	
SAXONY.			
ADHESIVE STAMPS.			
Issued 1850.			
3 pfennige	red		1 6
Issued 1851, head to right.			
½ neu groschen	slate	0 2	
2 "	rose	0 1	
2 "	dark blue	0 3	
2 "	light blue	0 6	
3 "	yellow	0 2	
3 pf arms	green	0 2	0 1
Issued 1854, head to left.			
½ neu gros	slate	0 2	0 1
1 "	rose	0 3	0 1
2 "	blue	0 4	0 1
3 "	yellow	0 5	0 1
5 "	red	1 0	0 2
10 "	blue	1 3	0 9
Issued 1863, arms.			
3 pfennige	green	0 1	0 1
½ neu gros	orange	0 1	0 1
1 "	rose	0 1	0 1
2 "	blue	0 2	0 1
3 "	brown	0 2	0 1
5 "	slate	1 0	0 2
5 "	ilac	0 3	0 2
ENVELOPE STAMPS.			
Issued 1856, head of King.			
1 neu gros, oval	rose	0 4	0 2
2 "	light and dark blue	0 9	0 6
3 "	yellow	0 9	0 3
5 "	purple and lilac	1 6	0 6
10 "	green	2 6	1 6
Issued 1863, arms.			
½ neu gros, oct.	orange	0 2	0 1
1 "	oval	0 2	0 1
2 "	blue	0 4	0 3
3 "	brown	0 5	0 2
5 "	mauve	0 9	0 2
SERVIA. (Issued 1856.)			
1 para, head	green	0 1	

Servia—continued.		Unused	Used
		s. d.	s. d.
2 paras	brown	0 2	
10 "	thick paper yellow	1 0	
20 "	rose	1 0	
40 "	blue	2 0	
10 "	thin paper orange	0 3	
20 "	carmine	0 6	
40 "	cobalt	0 9	
1 "	arms green on rose	0 2	
2 "	red on lilac	0 3	
1 para (1869)		yellow	0 1
10 "	brown	0 3	
15 "	orange	0 4	
20 "	blue	0 6	
25 "	rose	0 8	
35 "	green	1 0	
40 "	violet	1 3	
50 "	green	1 6	
SIERRA LEONE.			
6d	purple	1 0	0 9
SOUTH AUSTRALIA.			
1d	green	0 3	0 2
2d	carmine		0 6
2d	red	1 0	0 2
2d	orange	0 4	0 1
2d (1868)	"	0 6	
4d	purple	0 9	0 4
6d	dark blue	2 6	0 2
6d	cobalt	1 0	0 2
6d	pale lilac	2 0	0 2
9d	grey	2 6	0 9
10d	red	2 6	1 0
10d	yellow	2 6	1 0
1s	orange		2 0
1s	yellow		1 6
1s	chocolate	2 0	0 2
2s.	lake	4 0	0 9
SPAIN.			
For the town of Madrid.			
<i>Bear and tree in oval.</i>			
1 cuarto	bronze	12 6	6 6
3 "	"		
Issued 1850, head of Queen.			
6 cuartos	black	2 6	0 2
12 "	violet		4 0
5 reales	carmine	6 6	1 6
6 "	blue		10 0
10 "	green		7 6
Issued 1851.			
6 cuartos	black	2 6	0 2
12 "	violet		3 6
2 reales	pale rose		1 6
5 "	crimson	6 6	1 6
6 "	blue		10 0
10 "	green	10 0	3 6
Issued 1852.			
6 cuartos	red	2 6	0 2
12 "	violet		3 6
2 reales	pale rose		1 6
5 "	green		1 6
6 "	blue		10 0
Issued 1853.			
6 cuartos	rose	2 6	0 2
12 "	violet		3 0
2 reales	vermillion		3 0
5 "	green		1 6
6 "	blue		10 0
Issued 1851.			
2 cuartos	green		1 6
4 "	rose	3 0	0 3
6 "	rose	2 6	0 2
1 real	blue-black		1 0

Spain—continued.		Unused s. d.	Used. s. d.	Spain—continued.		Unused s. d.	Used s. d.
1 real	pale blue		1 0	5 mils de esco	green	0 1	0 1
2 "	scarlet	7 0	1 0	25 "	blue	0 3	0 3
3 "	green	7 0	1 0	50 "	mauve	0 6	0 6
6 "	blue		10 0	100 "	brown	0 9	0 9
Issued 1855, on blue paper.				200 "	green	1 0	1 0
2 cuartos	green		1 8	Official Stamps			
4 "	brown		0 4	½ onza (1854)	yellow	0 4	0 4
4 "	crimson		0 0	1 "	rose	0 4	0 4
1 real	blue		0 9	4 onza	green	0 6	0 6
2 "	brown		0 4	1 libra	blue	0 8	0 8
Issued 1856, watermark of crossed lines.				½ onza oval (1855)	straw	0 2	0 2
2 cuartos	green		2 0	1 "	rose	0 2	0 2
4 "	red		0 4	4 "	green	0 8	0 8
1 real	blue		2 0	1 libra	blue	0 8	0 8
2 "	violet		0 3	CUBA & PORTO RICO.			
Issued 1857, no watermark.				Issued 1855, on blue paper.			
2 cuartos	green	3 6	1 0	½ real plata f	blue-green		0 8
4 "	rose	0 4	0 1	1 "	green		0 8
12 "	orange	7 6	0 0	2 "	crimson		1 0
1 real	blue	3 0	0 9	Issued 1856, watermark of crossed lines.			
2 "	brown		0 2	½ rl pl f	blue		1 0
Issued 1860.				1 "	green		2 6
2 cuartos	green	1 0	0 6	2 "	red		
4 "	orange	0 6	0 1	Issued 1857, no watermark.			
13 "	carmine	2 0	0 3	½ rl pl f	blue	0 6	0 2
19 "	brown	5 0	3 6	1 "	green	0 9	0 4
1 real	blue	1 0	0 4	2 "	red	2 0	1 0
2 "	lilac	1 0	0 1	2 "	Y½ (a cuartillo)		2 6
Issued 1862.				½ rl pl f (1864)	black	0 6	0 6
2 cuartos	blue	0 2	0 2		black on buff	2 6	
4 "	brown	0 3	0 2	1 "	green	1 0	0 2
12 "	blue	1 0	0 3	1 "	indigo	2 0	0 2
19 "	rose	1 0	1 0	2 "	red	3 6	0 9
1 real	chocolate	0 8	0 4	5 cemos (1860)	lilac	0 6	
2 "	green	1 0	0 1	10 "	blue	1 0	0 6
Issued 1864.				20 "	green	1 3	0 6
2 cuartos	blue	0 2	0 2	40 "	rose	3 6	
4 "	red	0 3	0 2	15 cemos (1867)	violet	0 6	
12 "	green	0 8	0 4	10 "	blue	1 0	0 6
19 "	violet	2 0	1 3	20 "	green	1 6	0 6
1 real	brown	0 8	0 4	40 "	rose	3 0	
2 "	blue	0 8	0 1	5 cemos (1868)	violet	0 6	
Issued 1865.				10 "	blue	1 0	
2 cuartos	rose	0 2	0 2	20 "	green	1 6	
4 "	blue	0 3	0 2	40 "	rose	3 0	
12 "	blue, centre	0 8	0 3	5 " (1869)	rose	0 6	
19 "	brown, centre	1 6	1 0	10 "	brown	1 0	
1 real	green	0 6	0 4	20 "	orange	1 6	
2 "	rose and lilac	0 9	0 2	40 "	lilac	3 0	
Issued 1866.				STRAITS SETTLEMENTS			
2 cuartos	rose	0 2	0 2	2 cents (1867)	red on brown	0 6	0 4
4 "	blue	0 3	0 2	3 "	blue	0 8	0 6
12 "	orange	0 8	0 3	4 "	black	0 10	0 8
19 "	brown	1 6	1 0	6 "	mauve on orange	2 6	1 6
10 cents de esco	green	0 6	0 3	8 "	green on orange	1 6	0 3
20 "	lilac	1 0	0 1	12 "	rose on green	3 6	2 0
20 "	grey	1 0	0 6	24 "	blue on rose	3 0	0 3
20 cemos	violet	1 0	0 2	32 "	black on orange	5 0	1 0
Issued 1867.				3 half-cents	red on blue	0 6	
2 cuartos	brown	0 2	0 2	2 cents (1868)	brown	0 3	
4 "	blue	0 3	0 2	4 "	carmine	0 0	0 3
12 "	yellow	0 8	0 4	6 "	lilac	0 0	0 3
19 "	rose	1 6	1 0	8 "	orange	1 0	
19 "	brown	1 0	0 4	12 "	blue	1 6	0 3
10 cents de esco	green	0 6	0 4	24 "	green	3 0	0 3
20 "	lilac	1 0	0 1	32 "	vermilion	4 0	
10 mils de esco	brown	0 2	0 1	96 "	dark brown	10 6	0 3
25 "	blue, centre	0 3	0 2				
50 "	brown	0 6	0 2				

S W E D E N.		Unused s. d.	Used s. d.
3	skilling banco (1855) green	5 0	1 0
4	" blue	2 0	0 1
4	" slate		0 6
8	" grey	5 0	0 6
8	" yellow and orange	5 0	0 3
24	" red and cinnamon	5 0	0 9
3	öre Issued 1802-06. brown	0 1	0 1
5	" green	0 2	0 1
9	" lilac and purple	0 6	0 2
12	" light and dark blue	0 3	0 1
17	" lilac	0 6	0 4
20	" orange	0 6	0 2
24	" yellow	0 6	0 1
24	" orange		0 3
30	" brown	0 7	0 1
50	" lake	0 10	0 1
	Oblong (Localbref) black	1 0	0 8
	" brown	0 9	0 6
S W I T Z E R L A N D.			
BASLE.			
2½	rappen red and blue	5 0	
GENEVA.			
5	centimes blk on green		4 0
5	" green on white		
5	" (envelope) gn on white		
5	" small black on green		
NEUCHÂTEL.			
5	centimes black		4 0
VAUD.			
4	centimes black		5 0
5	" "		
WINTERTHUR.			
2½	rappen black and red		4 0
ZURICH.			
4	rappen black		
6	" "		1 6
GERMAN AND FRENCH CANTONS.			
2½	rap (Orts Post) black		1 6
2½	" (Poste Locale) "		2 0
<i>White cross on red shield.</i>			
3	rap (Rayon I.) blk on blue	3 0	0 3
5	" blue on white	2 6	0 2
10	" (Rayon II.) yellow		0 2
15	" (Rayon III.) red		0 2
15	centimes "		1 0
Issued 1855, "Franco."			
2	rappen grey	0 3	0 2
5	" amber	2 6	1 0
5	" brown	0 6	0 1
10	" blue	1 0	0 1
15	" rose	1 0	0 1
20	" yellow	1 0	0 1
40	" green	1 6	0 1
1	franc grey	2 0	0 6
Issued 1862-67, "Helvetia."			
2	centimes grey	0 1	0 1
3	" black	0 1	0 1
5	" brown	0 1	0 1
10	" blue	0 2	0 1
10	" rose	0 2	0 1
20	" orange	0 3	0 1
25	" green	0 5	
30	" scarlet	0 6	0 1
30	" blue	0 6	0 2
40	" green	0 6	0 1
50	" mauve	0 9	0 1
60	" bronze	0 9	0 1
1	franc gilt	1 3	0 2
5	cs (envelope) rose	0 2	0 1
10	" lake	0 8	0 1

Switzerland—continued.		Unused s. d.	Used s. d.
25cs	(envelope) green	0 5	
30	" blue	0 6	
S H A N G H A I.			
1	candareen (1865) indigo	0 3	
2	" black	0 4	
3	" chocolate	0 6	
4	" yellow	0 9	
6	" bistre	1 3	
6	" red	2 6	
6	" green	3 0	
8	" green	1 6	
12	" bistre	2 6	
12	" red	5 0	
16	" red	3 6	
2	cents (1866) rose	0 4	
4	" lilac	0 9	
8	" blue	1 6	
16	" green	3 0	
1	candareen brown	0 3	
3	" orange	0 9	
6	" blue-grey	1 6	
12	" slate	3 0	
T A S M A N I A.—Old issue.			
1d	octagonal blue		3 0
4d	" yellow and orange		0 6
1d	Present issue. red	0 6	0 3
1d	orange	0 3	0 2
2d	light and dark green	0 4	0 2
4d	light and dark blue	0 9	0 2
6d	oct slate and grey	3 6	0 3
6d	" lilac	1 0	0 2
1s	" red	2 0	0 3
T H U R N & T A X I S.			
N O R T H E R N S T A T E S.			
A D H E S I V E S T A M P S.			
Issued 1850, black on colour.			
½	silb groschen brown	1 6	1 0
½	" pale brown	0 4	0 3
½	" green		0 4
1	" light blue		0 3
1	" dark blue		0 6
2	" rose		0 1
3	" yellow		0 1
Issued 1860-64, col. on white			
½	silb gros red	0 2	0 2
½	" black	0 1	0 1
½	" green	0 1	0 1
½	" "	0 9	0 6
½	" orange	0 2	0 1
1	" blue	0 6	0 2
1	" rose	0 3	0 1
2	" "	0 6	0 2
2	" blue	0 1	0 1
3	" marone	0 6	0 1
3	" yellow-brown	0 6	0 3
3	" stone	0 6	0 1
5	" lilac	0 9	0 6
10	" orange	1 6	1 0
E N V E L O P E S T A M P S.			
Lilac inscription.			
½	gros oval orange		
1	" rose		
2	" blue		
3	" brown		
Inscription same colour as stamp.			
½	gros oval black	0 2	
½	" orange	0 3	
1	" rose	0 4	0 2
2	" blue	0 6	0 2
3	" brown	0 8	0 2

NORTH GERMAN CON-FEDERATION.		Unused	Used
		s. d.	s. d.
½ groschen (1868)	mauve	0 1	0 1
½ "	green	0 1	0 1
½ "	orange	0 2	0 1
1 "	rose	0 3	0 1
2 "	blue	0 6	0 1
5 "	pale brown	0 8	0 1
1 " envelope	rose	0 3	0 1
1 krenzer	green	0 1	0 1
2 "	orange	0 2	0 1
3 "	rose	0 3	0 1
7 "	blue	0 6	0 2
18 "	pale brown	1 0	0 4
3 " envelope,	rose	0 3	
OFFICIAL STAMPS.			
10 silb gros	grey	2 0	0 2
30 "	blue	5 0	0 3
SOUTHERN STATES.			
ADHESIVE STAMPS.			
Issued 1850, black on colour.			
1 krenzer	green	1 6	0 2
3 "	light and dark blue		0 2
6 "	rose	2 6	0 1
9 "	yellow	1 6	0 1
Issued 1860-62, colour on white.			
1 krenzer	green	0 1	0 1
3 "	blue	1 6	0 2
3 "	rose	0 2	0 1
6 "	"	1 0	0 2
8 "	blue	0 4	0 1
9 "	yellow	2 6	0 2
9 "	pale brown	0 5	0 1
15 "	lilac	0 8	0 3
30 "	orange	1 6	0 6
ENVELOPE STAMPS.			
Lilac inscription.			
2 krenzer, oct,	yellow		
3 "	rose		
6 "	blue	5 0	
9 "	brown	3 6	
Inscription same colour as stamp.			
1 krenzer, oct,	green	0 2	
2 "	yellow	0 3	
3 "	rose	0 3	0 2
6 "	blue	0 6	0 2
9 "	brown	0 8	0 1
PRUSSIAN STATES.			
ADHESIVE STAMPS.			
Issued 1867.			
1 krenzer, oct	green	0 2	0 1
2 "	orange	0 2	0 1
3 "	rose	0 3	0 1
6 "	blue	0 6	0 1
9 "	tone	0 8	0 1
ENVELOPE STAMPS.			
1 krenzer, oct	green	0 2	0 1
2 krenzer	orange	0 2	0 2
3 "	rose	0 3	0 1
6 "	blue	0 6	0 2
9 "	stone	0 8	0 1
TRANSVAAL REPUBLIC.			
1d.	red brown	0 4	
1d.	vermillion	0 6	
6d.	blue	1 3	
1s.	green	2 6	
TRINIDAD.			
First issue, wood-block.			
Value not indicated	red	1 6	
"	blue		10 0
"	slate		10 0

Trinidad—continued.		Unused	Used
		s. d.	s. d.
Old issue, on blue paper.			
Value not indicated	blue		10 6
"	red		2 0
"	brown		5 0
On white paper.			
Value not indicated	blue		
"	red		1 6
"	purple		4 0
"	black		
Later issue.			
Value not indicated	rose		0 6
"	red	0 2	0 1
"	carmine		0 2
4d	neutral		2 0
4d	lavender	2 6	0 9
4d	violet	0 9	0 4
6d	light & dark green	1 0	0 2
1s	dark purple	10 6	2 6
1s	mauve	2 0	0 2
5s	violet	10 6	
TURKS ISLANDS.			
1d	rose	0 2	
6d	black	1 0	
1s	indigo	2 6	
TUSCANY.			
Lion, on blue paper.			
1 quattrino	black		2 0
1 soldo	orange		2 6
2 "	red	20 0	20 0
1 crazia	"		0 3
2 "	blue		0 3
4 "	green		0 3
6 "	blue		0 3
9 "	claret		0 4
60 "	red		20 0
On white paper.			
1 quattrino	black	0 6	0 4
1 soldo	orange	1 6	1 6
2 "	red		
1 crazia	red and rose	1 0	0 2
2 "	blue	0 6	0 2
4 "	green	0 6	0 2
6 "	light & dark blue	1 6	0 2
6 "	purple	1 6	0 4
9 "	brown	1 6	1 0
60 "	red-brown		
Cross and shield.			
1 centes	pale lilac	2 6	0 4
1 "	dark violet	1 0	0 4
5 "	yellow-green		0 6
5 "	dark green		0 4
10 "	light & dark brown	1 0	0 2
20 "	light & dark blue	1 6	0 2
40 "	light & dark red	2 0	0 2
80 "	pink		1 0
3 lire	yellow		
TWO SICILIES.—NAPLES			
Arms in centre.			
½ grano	red	1 6	1 0
1 "	"	0 6	0 2
2 "	"	0 9	0 2
5 "	"	1 0	0 2
10 "	"	1 6	0 3
20 "	"	2 6	0 8
50 "	"	5 0	3 6
Provisional Government.			
½ tornese (cross)	blue	30 0	12 6
½ " (arms)	"		
SICILY. Head of Bomba.			
½ grano	orange	0 9	1 6
1 "	olive	0 6	0 6

Two Sicilies—continued.		Unused	Used.
		s. d.	s. d.
1 grano	brown	1 6	0 9
2 "	pale blue	0 4	0 3
2 "	deep blue		1 0
5 "	scarlet	2 6	1 6
5 "	carmine	2 6	0 9
5 "	pale orange	0 8	0 6
10 "	indigo	0 6	0 6
20 "	blue-black	0 9	0 9
50 "	red-brown	1 6	2 6
UNITED STATES OF AMERICA.			
ADHESIVE STAMPS.			
U.S. P.O., head of Franklin.			
5 cents	brown	2 6	0 6
10 "	black	2 6	2 0
New York Post Office.			
Head of Washington.			
5 cents, large,	black	5 0	5 0
1 cent Issued 1857.	blue	0 4	0 1
3 "	red	0 6	0 1
5 "	brown	0 9	0 3
10 "	green	0 9	0 2
12 "	black	1 0	0 1
24 "	lilac	1 6	0 3
30 "	orange	2 6	1 6
90 "	blue	4 6	3 6
Issued 1861.			
1 cent	blue	0 1	0 1
2 "	black	0 2	0 1
3 "	rose	0 2	0 1
5 "	dark brown	0 6	0 2
5 "	yellow-brown	0 9	0 4
10 "	green	0 8	0 1
12 "	black	0 8	0 1
15 "	"	1 0	0 3
24 "	lilac and purple	1 6	0 1
30 "	yellow	2 0	0 2
90 "	blue	5 0	0 2
Issued 1869.			
1 cent (Washington)	marone	6 1	0 1
2 " (Horseman)	brown	0 2	0 1
3 " (Locomotive)	blue	0 3	0 1
6 " (Washington)	"	0 5	0 2
10 " (Arms)	orange	0 9	0 2
12 " (Steamship)	green	0 10	0 1
15 " (Landing of Colum- bus)	brown and blue	1 0	0 4
24 " (Declaration of Inde- pendence)	green and lilac	1 9	0 2
30 " (Arms)	blue & rose	2 0	0 4
90 " (Lincoln)	blk. & red	8 0	0 6
Newspaper stamps.			
5 cents, large,	blue	0 8	
10 "	green	1 3	
25 "	red	2 6	
ENVELOPE STAMPS.			
Issued 1857, large oval.			
3 cents	red, on white or yellow	1 0	0 5
6 cents	red on white or yellow	3 6	
6 "	green "	3 6	
10 "	green "	2 6	1 6
Issued 1860, small oval.			
3 cents	red, on white or yel.	1 0	
6 "	" "	3 6	
10 "	green "	3 6	
Issued 1861.			
1 cent oval,	indigo	0 4	0 3
4 " (3c and 1c on same envelope)	on white paper on yellow paper	2 0 1 3	

U. S. America—continued.		Unused	Used
		s. d.	s. d.
Figures of value in small oval at sides, small figures.			
3 cents, oval, rose, on white or yellow		1 6	0 3
6 "	" "	1 0	
3 "	rose on blue	1 0	
Larger figures.			
3 cents, oval, rose, on white or yellow		0 3	0 1
3 "	brown "	0 6	
6 "	rose "	1 0	
6 "	mauve "	0 6	
Large transverse oval.			
10 cents	green on white	1 6	
10 "	" yellow	1 0	0 9
12 "	brown and red	2 0	
20 "	blue "	2 0	
24 "	green "	2 0	
40 "	black "	3 6	
Same device, issued 1865.			
9 cents	yellow	0 9	
12 "	brown	1 0	
18 "	vermillion	1 6	
24 "	blue	2 0	
30 "	green	2 6	
40 "	pink	3 0	
Issued 1863-4, head of Andrew Jackson.			
2 cents, blk on yellow or buff		0 3	0 2
2 " U.S. Post "		0 3	0 2
LOCAL STAMPS.			
100 varieties, post free, for 5 0			
150 "	" " for 7/6		
200 "	" " "		
Pony Express Stamps. (Wells, Fargo, & Co.)			
10 cents	brown	0 6	
1 dollar	red	1 0	
2 "	"	1 6	
2 "	green	1 6	
4 "	"	2 6	
4 "	black	2 6	
25 cents	carmine	2 6	
25 "	deep blue		
25 "	ultramarine	2 6	
1 dollar (St. Joseph to Pla- cerville), large oblong, rose		1 0	
1 " small oval, blue		1 0	
Newspaper stamp, oblong, "		0 6	
VENEZUELA			
Issued 1859 arms.			
1/4 real, small,	orange	0 6	0 3
1/4 " "	lemon		3 6
1 " "	blue	1 0	0 6
2 " "	red	1 6	0 9
Issued 1862.			
1/2 centavo	green	0 4	
1/2 " "	purple	0 4	
1 " "	brown	0 9	
Issued 1863, eagle.			
1/2 centavo	rose	0 2	
1 " "	slate	0 3	
1/4 real	yellow	0 6	
1 " "	blue	0 9	
2 " "	green	1 6	
Issued 1866, arms, in octagon			
1/2 real, square, rose and lake		0 6	0 4
1 " "	orange	1 0	0 9
2 " "	yellow	2 0	
1/2 centavo	green	0 2	
1 " "	slate	0 3	

Venezuela—continued.

		Number	Used
		s. d.	s. d.
LAGUIRA, SAN TOMAS, AND PUERTO CABELLO			
1/4 centavo	white	0 2	
1 "	rose	0 2	
2 "	green	0 6	
3 "	yellow	0 8	
4 "	blue	0 8	
1 real	rose	0 9	0 4
1/2 "	blue	1 0	
2 "	green	1 0	0 6
2 "	orange	2 0	1 6
1/4 "	green		0 6
2 "	rose		0 6

VICTORIA

Half-length portrait of Queen			
1d	rose	7 6	0 6
1d	red		0 6
1d	cinnamon		1 0
2d	cinnamon		2 0
2d	ash		1 6
3d	light blue	5 0	0 4
3d	dark blue		0 4
Queen enthroned.			
1d	green	4 0	2 0
2d	brown		0 6
2d	mauve		0 6
6d	blue	2 0	0 2
Ornaments in angles.			
1d	green	1 6	0 2
2d	purple and lilac		0 3
2d	slate		0 4
4d	rose		0 6
4d	brown		1 0
1d (without ornaments)	green	0 3	0 1
1s. octagonal,	blue		0 2
Figures at sides.			
3d	blue		0 2
4d	rose		0 2
6d	orange		
6d, small figures,	black		0 3
6d, large "	"	0 9	0 1
"Postage-stamp" at sides.			
6d	yellow		0 2
6d	orange		0 6
6d	black		0 6
2s	green		0 2
6d (too late)	lilac and green		5 0
1s (registered)	rose and blue		2 0
Issued 1865-66.			
1d	green	0 2	0 1
2d	lilac	0 4	0 1
3d	magenta	1 6	0 6
5d (large figures)	lilac	0 9	0 6
8d	orange	3 9	
4d	rose	0 6	0 1
6d	indigo	1 3	0 1
8d	yellow	2 0	0 6
10d	slate		1 6
10d	brown on rose	2 0	0 6
1s oct,	blue on blue	2 0	0 2
2s	blue on yellow	3 6	0 2
5s	blue on yellow	12 6	2 0
5s	red and blue on white	12 6	1 3

VIRGIN ISLANDS.

1d	green	0 2	
4d	brown	1 0	
6d	carmine	1 0	
1s	(two varieties) rose	2 6	

WESTERN AUSTRALIA.

2d octagonal	brown on red		4 0
4d "	blue	1 0	0 4
6d octagonal	bronze		3 6
6d octagonal	slate		3 6
1s oval	marone	3 6	2 6
1d oblong	black	3 6	0 6
1d "	carmine	0 3	0 2
1d "	rose	0 4	0 2
1d "	straw	0 3	0 2
2d "	orange	0 6	0 4
2d "	blue	0 6	0 2
4d "	yellow	0 4	0 3
4d "	indigo	2 0	
4d "	vermillion	1 0	0 9
4d "	carmine	0 9	0 4
6d "	green		3 6
6d "	violet-carmine		0 6
6d "	mauve	1 3	0 4
6d "	lilac	1 0	0 3
1s "	green	2 0	0 6

WURTEMBERG.

ADHESIVE STAMPS.

Issued 1860-1, figure in centre.			
1 kreuzer	buff	0 0	0 2
3 "	yellow	0 9	0 1
6 "	green	1 6	0 1
9 "	rose	1 6	0 4
18 "	purple	2 6	1 6
Issued 1860, arms.			
1 kreuzer	brown	0 6	0 2
3 "	orange	0 4	0 1
6 "	green	0 4	0 1
9 "	rose	1 6	0 2
18 "	blue	1 6	0 6
1 kreuzer (1863)	green	0 1	0 1
3 "	rose	0 2	0 1
6 "	blue	0 4	0 1
9 "	black-brown	2 0	0 6
9 "	yellow-brown	0 6	0 1
18 "	orange	1 0	0 6
1 "	(1868) green	0 1	
3 "	rose	0 3	
7 "	blue	0 6	
14 "	yellow	1 0	
Returned letter stamp	black	0 4	

ENVELOPE STAMPS.

1 Kreuzer, oct,	green	0 1	0 1
3 " green inscription, rose		0 6	0 4
3 " black "		0 3	0 1
3 " rose on white paper		1 0	0 6
6 " blue "		2 6	0 6
6 " " on blue paper		0 6	0 2
9 " brown "		0 6	0 1
9 " " on white paper		2 6	0 2
Issued 1867, on yellow paper.			
4 Kreuzer, oct.	yellow	0 4	
6 " "	indigo	0 6	
7 " "	green	0 6	
9 " "	brown	0 6	

Cheap Sets of Stamps—Continued.

	Set of	s.	d.
Prince Edward's Island ..			
complete	5	..	1 6
Prussia (including official)	25	..	1 6
Queensland	10	..	2 9
Réunion	2	..	15 0
Romagna, unused, complete	9	..	3 0
Russia, adhesive ..	7	...	1 0
" (for Levant) unused	2	..	1 2
" Envelopes, unused..	4	...	5 0
Servia, complete	7	..	1 9
Schleswig-Holstein, 1849,			
1 and 2sch	2	..	1 6
Schleswig and Holstein,			
1865	20	...	3 0
St. Helena	6	..	3 0
St. Lucia, 1d, 4d, 6d, and			
1s	4	...	1 9
St. Vincent, complete	4	...	1 6
Sandwich Islands, common			
values	6	..	2 6
Saxony, first issue	5	..	0 9
Saxony, all issues	27	..	2 6
Shanghai, old issue, com-			
plete	8	...	8 6
Sicily (head of Bomba) com-			
plete	7	...	3 0
South Australia	9	..	1 6
Spain—			
1854, official set of 4 complete	...	1	0
1855, " " " " " " " "	...	0	8
1855, 2cu, 4cn, 1rl, 2rls, set of 4			
complete	2	3
1856, " " " " " " " "	..	4	3 6
1857, " " " " " " " "	..	5	5 0
1860, " " " " " " " "	..	6	4 0
1862, " " " " " " " "	..	6	1 9
1864, " " " " " " " "	..	6	2 0
1865, " " " " " " " "	..	6	1 6

	Set of	s.	d.
Spain—			
1866, " " " " " " " "	7	1	6
1867, " " " " " " " "	10	1	9
1850-67,			
(several very rare)	80	..	37 6
Straits Settlements,	9	..	3 6
Sweden, complete	18	..	3 9
Switzerland	25	...	3 3
Tasmania	6	...	0 9
Thurn and Taxis	60	...	6 6
Trinidad	6	...	1 0
Turk's Islands, unused ..	3	..	9 6
Tuscany (lion and shield)..	18	..	3 6
United States, local stamps	80	..	3 6
" " " " " " " "	100	...	5 0
" (several very rare) 150	..	7	6
" " " " " " " "	200	..	0 0
United States Pony Express	11	..	10 0
United States	20	..	1 0
Venezuela & La Guaira, com.	25	..	11 6
Victoria, half length, 1d,			
1d, 2d, 3d, 3d	5	...	2 6
Victoria, Queen on Throne,			
1d, 2d, 6d	3	...	2 3
Victoria, new issue	8	...	1 6
Victoria, all issues	25	...	4 0
Virgin Islands, unused ..	4	..	4 0
Western Australia	12	...	3 6
Wurtemberg, complete ..	25	...	5 0

* * All Stamps in the above sets are GUARANTEED GENUINE, and in good condition.

TO DEALERS.

Well-assorted Foreign and Colonial Stamps, many unused and rare....	5s. per 100
Ditto ditto 'best quality	10s. " "
Ditto used Colonial Stamps.....	5s. per 100
Ditto ditto several unused, and rare	10s. " "
Ditto ditto best quality	20s. " "

* * The above are strongly recommended, being worth double the amount at list prices.

CHEAP COLLECTIONS FOR BEGINNERS.

100 Varieties	post free	s. d.	1 6	500 Varieties	post free	s.	21 0
200 "	" "	4	0	600 "	" "	30	0
300 "	" "	10	0	1000 "	" "	80	0

Several large Collections always on hand.

CONTENTS OF THE GUINEA PACKETS.

Post-free on receipt of a Post Office Order for £1 1s.

No. 1.

300 varieties of used and unused stamps, including Argentine, Old Brazilian, Granada Confederation, Montevideo, set of Roumania, U. S., envelopes; the newly issued British Columbia, Canada, Chili, Norway, Orange River, St. Helena, Salvador, Straits Settlements, North German Confederation, etc., etc.

(The stamps in this packet come to more than 40s. at list prices.)

No. 2.

100 good used and unused stamps, including Brazil (first and second issues), Buenos Ayres, Egyptian, Granada Confederation (three issues), 2 and 3 lire Italian, Mexico, Montevideo, Nicaragua, Hayti, Sandwich Islands, rare old Spanish, etc. *None of the commonest kinds are included in this packet.*

(The stamps in this packet come to more than 35s. at list prices.)

CONTENTS OF THE FIVE-GUINEA PACKET.

Post-free on receipt of a Post-Office Order for £5 5s.

700 varieties, including the following and many more rare stamps:—Brazil (all issues), rare New Granada, St. Domingo, Sandwich Islands; sets of Servia and other new issues; specimens of all the fourteen issues of Spain from 1850 to 1867 inclusive (comprising several old 19 cuart, 1 and 5 reales, 2 cuartos green of 1855, 1856, and 1857); rare United States envelopes, etc., etc., etc.

. This packet would make an excellent collection of foreign stamps, when the stamps it contains are mounted in a suitable album; and its contents would cost more than £10 if bought separately.

RARE STAMPS AND COLLECTIONS PURCHASED.

