



Bibliotheca Lindesiana.

PHILATELIC SECTION.



Crawford 158

COMPLETE CATALOGUE
OF ALL
POSTAGE STAMPS
AND ENVELOPES
OF THE
UNITED STATES,
INCLUDING ALL GOVERNMENTAL ISSUES AND
LOCAL STAMPS OF THE
CONFEDERATE STATES.

A REFERENCE LIST

Giving the date of issue, value (used and unused),
and necessary description to distinguish
every known stamp of above
countries.

JANUARY, 1896.

NEW YORK:
PUBLISHED BY R. F. ALBRECHT & CO.,
90 NASSAU STREET.

THE NATIONAL ARCHIVES

1913

RECEIVED

1913

1913

1913

RECEIVED



THE NATIONAL ARCHIVES
1913

CALENDAR

1896

1896							1896												
Jan.	Feb.	Mar.	Apr.	May	June	Sun.	July	Aug.	Sept.	Oct.	Nov.	Dec.	Sun.	Mon.	Tue.	Wed.	Thu.	Fri.	Sat.
5	2	1	5	3	31	12	5	2	6	4	1	29	12	6	3	1	2	3	4
6	3	2	6	4	1	13	6	3	7	5	2	30	13	7	4	2	3	4	5
7	4	3	7	5	2	14	7	4	8	6	3	1	14	8	5	3	4	5	6
8	5	4	8	6	3	15	8	5	9	7	4	2	15	9	6	4	5	6	7
9	6	5	9	7	4	16	9	6	10	8	5	3	16	10	7	5	6	7	8
10	7	6	10	8	5	17	10	7	11	9	6	4	17	11	8	6	7	8	9
11	8	7	11	9	6	18	11	8	12	10	7	5	18	12	9	7	8	9	10
12	9	8	12	10	7	19	12	9	1	11	8	6	19	1	10	8	9	10	11
13	10	9	13	11	8	20	1	10	2	12	9	7	20	2	11	9	10	11	12
14	11	10	14	12	9	21	2	11	3	1	10	8	21	3	12	10	11	12	13
15	12	11	15	13	10	22	3	12	4	2	11	9	22	4	1	11	12	13	14
16	13	12	16	14	11	23	4	1	5	3	12	10	23	5	2	12	13	14	15
17	14	13	17	15	12	24	5	2	6	4	1	11	24	6	3	13	14	15	16
18	15	14	18	16	13	25	6	3	7	5	2	12	25	7	4	14	15	16	17
19	16	15	19	17	14	26	7	4	8	6	3	1	26	8	5	15	16	17	18
20	17	16	20	18	15	27	8	5	9	7	4	2	27	9	6	16	17	18	19
21	18	17	21	19	16	28	9	6	10	8	5	3	28	10	7	17	18	19	20
22	19	18	22	20	17	29	10	7	11	9	6	4	29	11	8	18	19	20	21
23	20	19	23	21	18	30	11	8	12	10	7	5	30	12	9	19	20	21	22
24	21	20	24	22	19	31	12	9	1	11	8	6	31	1	10	20	21	22	23
25	22	21	25	23	20		1	10	2	12	9	7		2	11	21	22	23	24
26	23	22	26	24	21		2	11	3	1	10	8		3	12	22	23	24	25
27	24	23	27	25	22		3	12	4	2	11	9		4	1	23	24	25	26
28	25	24	28	26	23		4	1	5	3	12	10		5	2	24	25	26	27
29	26	25	29	27	24		5	2	6	4	1	11		6	3	25	26	27	28
30	27	26	30	28	25		6	3	7	5	2	12		7	4	26	27	28	29
31	28	27		29	26		7	4	8	6	3	1		8	5	27	28	29	30

UNITED STATES.

PROVISIONAL STAMPS.

Issued by U. S. Postmasters of the following cities :

Baltimore, 1846. Name of Postmaster (James N. Buchanan) with value below in oblong frame. (Many varieties).				
		○	⊕	On let'r
1	5c black on white paper	300 00	350 00	400 00
2	5c black on blue paper	300 00	350 00	400 00
3	10c black on bluish paper (Only one copy known, which is valued at \$1500 00.)			
— Envelope, hand stamp of same design.				
4	5c blue on buff, orange or white paper			350 00
5	10c red on white paper			750 00
Brattleboro, 1845. Name above, initials of postmaster in centre, value below. (10 varieties).				
6	5c black on buff p	600 00	600 00	650 00
Millbury, 1847. Head of Washington in double circle with "Post Office" above and value below.				
7	5c black on blue p	1200 00	1000 00	1200 00
New Haven, 1845. Envelope stamp. Name, value and signature of P. M. in octagonal frame.				
8	5c red on white, signature in blue ink			1500 00
9	.. same stamp cut square	450 00	*	*
10	.. signed reprint (red or blue) cut square			30 00
11	.. reprint, not signed, on large cut square			10 00
New York, 1842. Portrait of Washington in oval, "United States City Despatch" above, value below.				
12	3c black on blue wove p	30 00	35 00	40 00
13	3c black on blue glazed p	15 00	15 00	15 00
14	3c black on green wove p	200 00	200 00	200 00
15	2c black on buff wove p	300 00	300 00	350 00
—1845. Large portrait of Washington. "New York" above, value below.				
16	5c black on white p	10 00	7 50	8 00
17	.. variety, line at bottom	40 00	20 00	25 00
18	.. Reprint, blue paper	2 50	*	*
19	.. Die proofs in green, blue, scarlet, brown, violet or black, each \$2 50.			
Providence, 1845. Name and value in oblong with ornaments in corners.				
20	5c black on white (11 var's)	5 00	25 00	150 00
21	10c black on white paper	40 00	—	—
22	Entire sheet, (12 stamps, 11 fives and 1 10c stamp)	100 00	*	*

THE UNIVERSITY OF CHICAGO
DEPARTMENT OF CHEMISTRY
58 CHEMISTRY BUILDING
CHICAGO, ILLINOIS 60637
TEL: 773-936-3700
FAX: 773-936-3701
WWW: www.chem.uchicago.edu

GENERAL INSTRUCTIONS

1. The student must be present at the examination
at the time specified on the ticket.

2. The student must bring a valid photo ID
with them to the examination.
3. The student must bring a calculator
with them to the examination.
4. The student must bring a pen or pencil
with them to the examination.

St. Louis, 1845. State Arms, surmounted with numerals of value, name of place above. "Post Office" below. ○ ⊕ On let'r

23	5c black (5 varieties)	250 00	200 00	250 00
24	10c black (3 varieties)	200 00	175 00	200 00
25	20c black (2 varieties)	1500 00	—	—

Printed in plates of 6 stamps, three varieties each of 5 and 10c; two of the 5c were altered to 20c and afterwards changed back again to 5c values.

GENERAL ISSUES.

1847. "Post Office" above, value below, and numerals in lower corners. ○ ⊕

26	5c (Franklin) brown, bluish p	5 00	75
27	5c brown, white p	10 00	2 50
28	10c (Washington) black, bluish p	15 00	3 00
29	10c black, white p	25 00	20 00
30	.. Die proofs in purple, red brown, yellow, vermilion and olive green, each value & col'r	\$2.00	
31	Half of 10c black ⊕ as 5c c ⁿ letter	40 00	
— Re-engraved set (so-called Gov't Counterfeits)			
32	5c brown	1 50	*
33	10c black	2 50	*
34	Set of cardboard proofs	1 00	

1851. Unperforated Series. Various portraits in oval, "U. S. Postage" above, value in letters below.

35	1c blue (Franklin), full ornaments	40 00	20 00
36	1c blue, full line, but ornaments partly erased	2 00	25
37	1c blue, broken circle	25 00	15 00
38	3c red (Washington)	1 00	02
39	5c brown (Jefferson)	50 00	10 00
40	10c green (Washington)	12 00	85
41	Half of 10c green ⊕ as 5c on letter	—	50 00
42	12c black (Washington)	10 00	1 25
43	Half of 12c black ⊕ as 6c on letter	—	40 00
44	24c lilac (Washington)	150 00	250 00

Of this series no 30 or 90c value was ever issued. Those catalogued by other dealers and offered at terrific prices are nothing but proofs. We are supplying any proofs of 1851 issue at \$2.50 each.

1856. First Perforated Issue; same designs as for above issue. :: 15. ○ ⊕

45	1c blue, full ornaments	10 00	5 00
46	1c blue, ornaments partly erased	1 00	50
47	1c blue, broken circle	25	10
48	3c red, with outer line	12 00	25
49	3c red, no outer line	10	01

1800	1801
1802	1803
1804	1805
1806	1807
1808	1809
1810	1811
1812	1813
1814	1815
1816	1817
1818	1819
1820	1821
1822	1823
1824	1825
1826	1827
1828	1829
1830	1831
1832	1833
1834	1835
1836	1837
1838	1839
1840	1841
1842	1843
1844	1845
1846	1847
1848	1849
1850	1851
1852	1853
1854	1855
1856	1857
1858	1859
1860	1861
1862	1863
1864	1865
1866	1867
1868	1869
1870	1871
1872	1873
1874	1875
1876	1877
1878	1879
1880	1881
1882	1883
1884	1885
1886	1887
1888	1889
1890	1891
1892	1893
1894	1895
1896	1897
1898	1899
1900	1901

1856. First Perforated Issue—Continued.		○	⊕
50	5c brick-red (projections)	50 00	10 00
51	5c red (or rust) brown (projections)	25 00	6 00
52	5c dark brown (projections)	7 50.	3 00
53	5c brown (projections partly erased, type II)	6 00	7 00

(One row of ten of this type appears on every sheet of 100.)

54	5c brown (projections fully erased, type III)	2 00	2 00
55	10c green, full ornaments	3 00	1 00
56	10c green, ornaments erased	1 00	40
57	12c black	1 25	60
58	24c lilac	4 50	5 00.
59	30c orange (Franklin)	6 00	6 50
60	90c blue (Washington)	20 00	40 00
61	Set Cardboard Proofs (8 denominations)		3 00

Reprints of First Perforated Issue, ::12 (on snow white paper).

62	1c blue, full ornaments	5 00	
63	3c scarlet, with outer line	5 00	
64	5c red brown (type III)	5 00	
65	10c green, full ornaments	7 50	
66	12c black	7 50	
67	24c lilac	10 00	
68	30c orange	12 50	
69	90c blue	25 00	

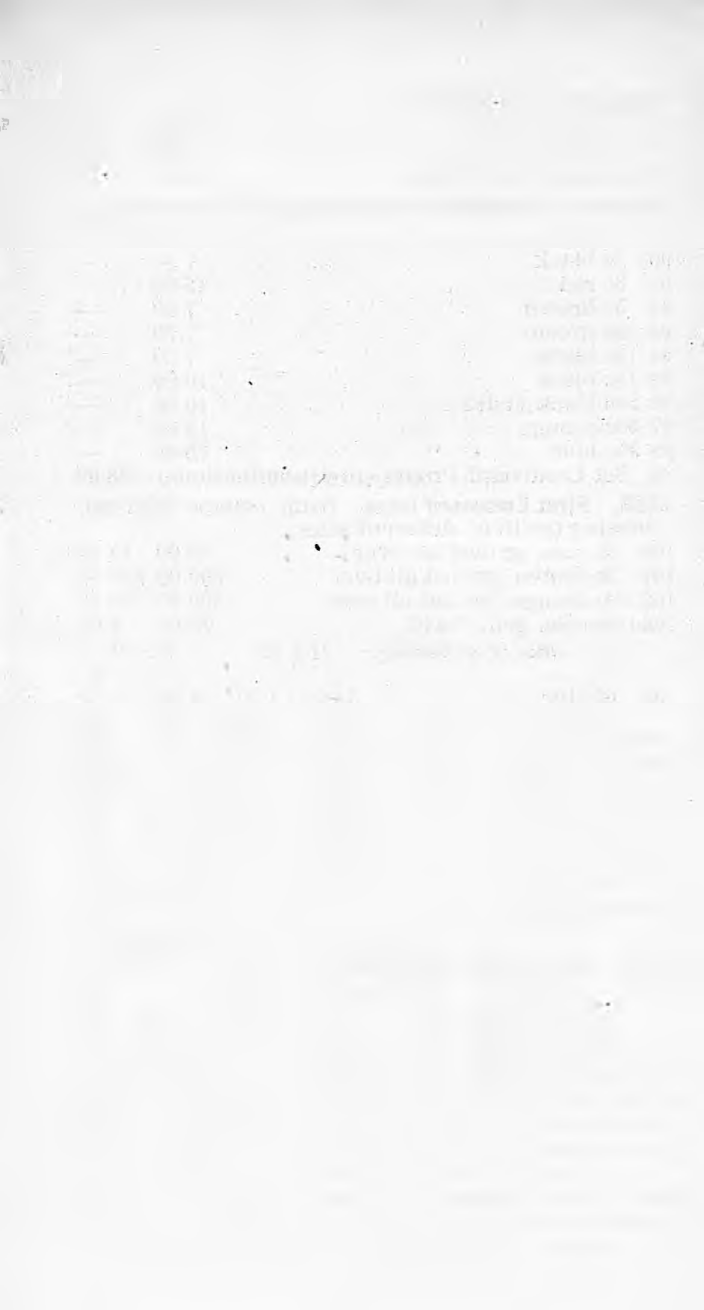
All United States postage stamps issued after 1861 are available for postage, while those previously issued are obsolete, because of the great quantities on hand in Southern post offices at the time of the outbreak of the civil war.

1861. Second Perforated Issue. Various portraits in different frames, values in numerals in upper, and "U.S." in lower corners. Perforated 12.

70	1c blue (Franklin)	25	03
71	3c pink (Washington)	25 00	6 00
72	.. same, no outer ornaments	30 00	—
73	5c dark brown (Jefferson)	4 00	25
74	.. same, no outer ornaments	25 00	—
75	5c yellow brown (Jefferson)	40 00	6 00
76	10c green (Washington)	75	06
77	12c black (Washington)	1 00	25
78	.. same, no outer ornaments	40 00	—
79	24c violet (Washington)	2 00	30
80	30c orange (Franklin)	3 50	40
81	90c blue (Washington)	10 00	3 00

1862-66

82	2c black on white (Jackson)	75	05
83	2c black, grayish surface	25	03
84	3c rose	10	01
85	3c scarlet	75 00	—



1862-66—Continued.

	○	⊕
86 5c red brown	10 00	2 00
87 15c black (Lincoln)	2 50	40
88 24c mauve (red lilac)	6 00	1 50

Re-issue of Second Perforated Issue (on snow-white p.)

89 1c blue	7 50	—
90 2c black	7 50	—
91 3c red	15 00	—
92 5c brown	7 50	—
93 10c green	7 50	—
94 12c black	7 50	—
95 15c black	10 00	—
96 24c black violet	10 00	—
97 30c orange	15 00	—
98 90c blue	15 00	—
99 Set Cardboard Proofs (10 denominations)	\$3 00	

1868. First Embossed Issue. Same stamps with embossing (grill) of different sizes.

100 3c rose, grilled all over	50 00	15 00
101 5c brown, grilled all over	500 00	350 00
102 30c orange, grilled all over	500 00	350 00
102a 3c rose, grill 13x16	25 00	6 00

Size of Embossing : 11 x 13 9 x 13

	○	⊕	○	⊕
103 1c blue	5 00	1 00	4 00	1 00
104 2c black	1 50	20	50	20
105 3c rose	40	03	25	02
106 5c brown	*	*	8 00	2 00
107 10c green	2 50	50	2 50	40
108 12c black	2 50	50	2 50	50
109 15c black	15 00	6 00	5 00	50
110 24c lilac	*	*	10 00	3 50
111 30c orange	*	*	10 00	3 50
112 90c blue	*	*	30 00	12 00

Reprints.**1875.****1869. Second Embossed Issue.**

Various portraits or designs.	○	⊕	○	⊕
113 1c ochre (Franklin)	1 00	40	1 00	50
114 2c brown (Horseman)	50	12	4 00	2 00
115 3c blue (Locomotive)	20	02	12 50	10 00
116 6c blue (Washington)	3 00	60	6 50	5 00
117 10c orange (Eagle)	3 50	75	10 00	8 00
118 12c green (Steamship)	2 00	60	8 00	6 00
119 15c brown and blue (landing of Columbus)	7 50	3 00	10 00	7 50
120 .. same (framed)	5 00	1 50	*	*
121 24c green & purple (Dec- laration of Independ'e)	15 00	6 00	15 00	12 00

1912-1913
1913-1914
1914-1915
1915-1916
1916-1917
1917-1918
1918-1919
1919-1920
1920-1921
1921-1922
1922-1923
1923-1924
1924-1925
1925-1926
1926-1927
1927-1928
1928-1929
1929-1930
1930-1931
1931-1932
1932-1933
1933-1934
1934-1935
1935-1936
1936-1937
1937-1938
1938-1939
1939-1940
1940-1941
1941-1942
1942-1943
1943-1944
1944-1945
1945-1946
1946-1947
1947-1948
1948-1949
1949-1950
1950-1951
1951-1952
1952-1953
1953-1954
1954-1955
1955-1956
1956-1957
1957-1958
1958-1959
1959-1960
1960-1961
1961-1962
1962-1963
1963-1964
1964-1965
1965-1966
1966-1967
1967-1968
1968-1969
1969-1970
1970-1971
1971-1972
1972-1973
1973-1974
1974-1975
1975-1976
1976-1977
1977-1978
1978-1979
1979-1980
1980-1981
1981-1982
1982-1983
1983-1984
1984-1985
1985-1986
1986-1987
1987-1988
1988-1989
1989-1990
1990-1991
1991-1992
1992-1993
1993-1994
1994-1995
1995-1996
1996-1997
1997-1998
1998-1999
1999-2000
2000-2001
2001-2002
2002-2003
2003-2004
2004-2005
2005-2006
2006-2007
2007-2008
2008-2009
2009-2010
2010-2011
2011-2012
2012-2013
2013-2014
2014-2015
2015-2016
2016-2017
2017-2018
2018-2019
2019-2020
2020-2021
2021-2022
2022-2023
2023-2024
2024-2025

1869—Continued.

	○	⊕	○	⊕
122 30c blue and carmine	15 00	3 00	17 50	12 50
123 90c black and carmine	30 00	15 00	30 00	25 00
124 . . Set of 10 Cardboard Proofs	\$7 50			

Errors of the 1869 Issue.

	○	⊕
125 1c ochre, with double grill	4 00	3 00
126 2c brown, with double grill	4 00	3 00
127 15c brown & blue, with double grill	10 00	7 50
128 15c brown & blue, inverted medal'n	350 00	150 00
129 24c green and purple, " "	500 00	125 00
130 30c blue & carmine, inverted shield	500 00	350 00

1870. Third Embossed Issue. Portraits to left in oval, "U. S." Postage above, value in numerals and letters below. (Exception: the 24c has the numerals of value in upper corner.) Printed by the National Bank Note Co. of New York.

	○	⊕
131 1c blue (Franklin)	2 00	40
132 2c brown (Jackson)	2 00	10
133 3c green (Washington)	75	03
134 6c pink (Lincoln)	10 00	3 50
135 7c vermilion (Stanton)	10 00	3 00
136 10c brown (Jefferson)	20 00	7 50
137 12c dark purple (Clay)	60 00	30 00
138 15c orange (Webster)	15 00	6 00
139 24c purple (Scott)	100 00	50 00
140 30c black (Hamilton)	30 00	20 00
141 90c carmine (Perry)	20 00	5 00

1870. Same set without embossing.

142 1c blue	1 50	10
143 2c brown	50	05
144 3c green	50	02
145 6c carmine	1 50	25
146 7c vermilion	4 00	60
147 10c brown	4 00	10
148 12c dark purple	10 00	60
149 15c orange	3 00	15
150 24c purple	10 00	2 00
151 30c black	4 00	50
152 90c carmine	4 00	80

1872. Reengraved stamps of previous issue, printed by the Continental Bank Note Co. of New York, on hard brittle p and with distinguishing marks.

153 1c blue	1 00	05
154 2c brown	50	03
155 3c green	50	01
156 6c pink	1 00	05
157 7c vermilion	2 50	40
158 10c brown	1 00	05
159 12c dark purple	10 00	60

1872-75. Same designs printed by the American Bank Note Co. of New York on soft spongy paper.

160	1c blue	25	01
161	2c vermilion	08	01
162	3c green	15	01
163	5c blue (Taylor) white paper	1 00	25
164	5c blue, bluish surface	60	05
165	6c carmine	75	04
166	10c brown	50	02
167	15c orange	60	05
168	30c black	1 50	20
169	90c carmine	3 00	60
170	.. Set of 11 Cardboard Proofs \$3.00.		

1875. Re-issue, printed on snow-white paper.

171	2c black-brown	10 00	—
172	7c scarlet-vermilion	15 00	—
173	12c black-purple	15 00	—
174	24c brownish violet	15 00	—

These four varieties are of peculiar shade and like the 1875 reprints of other issues on very white paper and with white gum.

1882. Portrait of James A. Garfield to left, value in star at bottom.

175	5c brown	15	02
176	5c brown, variety with cross lines	10	01

1883. Various portraits, "United States Postage" above

177	2c claret (Washington)	05	01
178	4c green (Jackson)	12	02

1887-88. New design for the 1c stamp, change of color of other values.

179	1c blue (Franklin)	05	01
180	2c green	05	01
181	3c vermilion	15	05
182	4c carmine	10	04
183	5c indigo blue (horizontal lines only)	1 00	15
184	5c indigo blue (variety, crossed lines)	10	02
185	30c puce brown	75	40
186	90c purple	2 00	1 00
187	Set of ten Cardboard Proofs, \$3 00.		

1890-93. Small sized stamps, numerals in lower corners

188	1c blue (Franklin)	02	01
189	2c lake (early color)	25	02
190	2c carmine (Washington)	04	01
191	3c purple (Jackson)	05	02
192	4c black brown (Lincoln)	06	01
193	5c chocolate (Grant)	08	01
194	6c dull magenta (Garfield)	15	06
195	8c mauve (Sherman)	15	08
196	10c green (Webster)	15	01

Year	Month	Day	Event	Page
1914	Jan	1	...	101
1914	Jan	2	...	102
1914	Jan	3	...	103
1914	Jan	4	...	104
1914	Jan	5	...	105
1914	Jan	6	...	106
1914	Jan	7	...	107
1914	Jan	8	...	108
1914	Jan	9	...	109
1914	Jan	10	...	110
1914	Jan	11	...	111
1914	Jan	12	...	112
1914	Jan	13	...	113
1914	Jan	14	...	114
1914	Jan	15	...	115
1914	Jan	16	...	116
1914	Jan	17	...	117
1914	Jan	18	...	118
1914	Jan	19	...	119
1914	Jan	20	...	120
1914	Jan	21	...	121
1914	Jan	22	...	122
1914	Jan	23	...	123
1914	Jan	24	...	124
1914	Jan	25	...	125
1914	Jan	26	...	126
1914	Jan	27	...	127
1914	Jan	28	...	128
1914	Jan	29	...	129
1914	Jan	30	...	130
1914	Jan	31	...	131
1914	Feb	1	...	132
1914	Feb	2	...	133
1914	Feb	3	...	134
1914	Feb	4	...	135
1914	Feb	5	...	136
1914	Feb	6	...	137
1914	Feb	7	...	138
1914	Feb	8	...	139
1914	Feb	9	...	140
1914	Feb	10	...	141
1914	Feb	11	...	142
1914	Feb	12	...	143
1914	Feb	13	...	144
1914	Feb	14	...	145
1914	Feb	15	...	146
1914	Feb	16	...	147
1914	Feb	17	...	148
1914	Feb	18	...	149
1914	Feb	19	...	150
1914	Feb	20	...	151
1914	Feb	21	...	152
1914	Feb	22	...	153
1914	Feb	23	...	154
1914	Feb	24	...	155
1914	Feb	25	...	156
1914	Feb	26	...	157
1914	Feb	27	...	158
1914	Feb	28	...	159
1914	Feb	29	...	160
1914	Feb	30	...	161

1890-93—Continued.

	O	⊕
197 15c marine blue (Taylor)	25	10
198 30c black (Jefferson)	50	12
199 90c orange (Perry)	1 50	75
200 Set of eleven Cardboard Proofs, \$2 50.		

1893. Columbian Issue.

201 1c blue	02	01
202 2c violet	02	01
203 3c green	08	01
204 4c ultramarine	08	01
205 5c brown	10	01
206 6c purple	10	1
207 8c magenta	12	11
208 10c slate brown	20	01
209 15c dark green	30	2
210 30c puce brown	50	5
211 50c slate blue	75	6
212 \$1.00 brick red	6 00	5 0
213 2.00 lilac brown	5 00	5 0
214 3.00 yellow green	3 75	3 2
215 4.00 carmine	5 00	5 0
216 5.00 black	6 00	6 0
217 Set of sixteen Cardboard Proofs, \$6 50.		

1894. Same design as 1890 issue with triangular ornaments in upper corners.

218 1c blue	03	1
218a 1c ultramarine	15	1
219 2c rose	05	0
219a 2c pink (triangle I)	10	01
219b 2c carmine (triangle I)	10	02
219c 2c carmine (triangle II)	10	02
220 3c purple	08	02
221 4c black brown	08	02
222 5c chocolate	10	01
223 6c red brown	12	02
224 8c mauve	15	10
225 10c green	15	02
226 15c blue	25	10
227 50c orange (Jefferson)	75	75
228 \$1.00 black (Perry)	2 50	1 50
229 2.00 blue (Madison)	4 50	3 00
230 5.00 green (Marshall)	7 00	5 00

1895. Same designs as 1894 issue, watermarked in double line caps U. S. P. S. (reading the same horizontally and vertically).

231 1c blue	02	01
232 2c carmine (triangle I)	04	01
233 2c carmine (triangle II)	05	01
234 2c carmine (triangle III)	03	01

1895—Continued.		○	⊕
235	3c purple	05	01
236	4c black-brown	06	01
237	5c chocolate	08	01
238	6c red-brown	08	04
239	8c dark purple	10	04
240	10c green	12	01
241	15c blue	20	08
242	50c orange	60	40
243	\$1.00 black	1 25	1 00
244	\$2.00 blue	2 25	2 00
245	\$5.00 green	5 50	5 00

CARRIER STAMPS.

Baltimore, 1849. Carriers' Dispatch (eye type).

	○	⊕	On let'r
246	1c blue	25 00	25 00 25 00
247	1c red	12 50	7 50 8 00

— **1851.** Man on horseback, "Government" above, "City Dispatch" below, value on flag in left hand of rider.

248	1c black on white	5 00	4 00 4 50
249	1c black on white, short rays	12 50	10 00 11 00
250	One <i>sent</i> , black on white p	25 00	15 00 17 50
251	1c red on white paper	15 00	12 00 13 50
252	1c red on white p, short rays	30 00	22 50 25 00
253	One <i>sent</i> , red on white p	40 00	30 00 35 00

— **1852.** "Post Office Despatch."

254	1c red on bluish paper	25 00	20 00 25 00
255	1c blue on bluish paper	25 00	20 00 25 00
256	1c blue on white paper	20 00	17 50 20 00
257	1c green on white paper	100 00	75 00 100 00

Boston, 1853. Penny Post in oblong frame.

258	1c blue, "Penny Post"	15 00	15 00
259	1c blue, "Penny Post Paid"	10 00	10 00
260 same on bluish paper	15 00	15 00

Philadelphia, 1851. "U. S. P. O. Paid 1 cent" and letters.

261	1c red paper, letter L S	—	35 00 40 00
262	1c red paper, letter P	—	40 00 45 00
263	1c red paper, letter H	—	50 00 60 00
264	1c blue paper (without letter)	—	100 00 105 00
265	1c red paper (without letter)	—	75 00 75 00

[Faint, illegible text, likely bleed-through from the reverse side of the page]

DEPARTMENT OF

[Faint, illegible text at the bottom of the page]

— 1851. Lithographed, "U. S. P. O.," and value			
	"1 cent" in bands, "Paid" in centre.	○	⊕ On let'r
266	1c gold on black	—	15 00 20 00
267	1c blue on white	—	40 00 42 50
268	1c black on blue	—	50 00 52 50
269	1c black on white		200 00 200 00

— 1851. "U. S. P. O. Despatch" in double lined oval, "Prepaid One Cent" in centre.

270	1c black	—	125 00 150 00
271	1c blue, buff paper (envelope)	—	100 00 *

— 1851. Same design, with Eagle above.

272	1c blue on buff p (envelope)	—	150 00 175 00
-----	------------------------------	---	---------------

New York, 1849. Double circle, "U. S. Mail" above, "Prepaid" below, value in centre.

273	1c 1c black on rose paper	12 00	10 00	12 00
274	1c black on yellow glazed p	20 00	10 00	12 50
275	1c black on buff paper	20 00	10 00	12 50

General Issues, 1851. Portrait of Franklin in oval, "Carriers" above, "Stamp" below; no value expressed on stamp.

276	Orange on white p	25 00	—	—
277	Blue on pink	25 00.	40 00	50 00
278	a. 1st reprint, 25c; b. 2d reprint, \$1.00.			

1851. Eagle on laurel branch, "U. S. P. O. Despatch" above, "Prepaid One Cent" below.

279	1c orange	25 00	—	—
280	1c blue	50	2 00	2 50
281	a. reprint, 25c; b, perforated reprint, 50c.			

Special Delivery Stamps:

		○	⊕
282	1885. 10c blue (inscription 6 lines)	30	15
283	1888. 10c blue (inscription 5 lines)	25	10
284	1893. 10c orange	20	8
285	1894. 10c blue	20	5
286	1895. 10c blue wmkd.	15	3
287	Set of 3 cardboard proofs	1 00	—

NEWSPAPER AND PERIODICAL STAMPS.

1865-67. Large sized stamps with various portraits, numerals in upper corners.

		○	⊕
288	5c blue (Washington)	17 50	25 00
289	10c green (Franklin)	6 00	15 00
290	25c vermilion (Lincoln)	6 00	15 00
291	5c blue, white border	2 00	25 00
292	Set of cardboard proofs	1 50	

1872
1873
1874
1875

1876
1877
1878
1879
1880
1881
1882
1883
1884
1885
1886
1887
1888
1889
1890
1891
1892
1893
1894
1895
1896
1897
1898
1899
1900

Year
1876
1877
1878
1879
1880
1881
1882
1883
1884
1885
1886
1887
1888
1889
1890
1891
1892
1893
1894
1895
1896
1897
1898
1899
1900

1875-85. Emblematic figure of America.		○	⊕
293	1c black	20	20
294	2c black	20	20
295	3c black	50	50
296	4c black	40	40
297	6c black	60	60
298	8c black	75	75
299	9c black	12 00	12 00
300	10c black	30	30

Emblematic figure of Justice.

First color:

301	12c rose	1 50	1 50.
302	24c rose	1 50	1 50
303	36c rose	1 50	1 50
304	48c rose	1 75	1 75
305	60c rose	2 00	2 00
306	72c rose	2 50	2 50
307	84c rose	7 50	7 50
308	96c rose	4 00	4 00

Second color:

309	12c brick red	1 50	1 50
310	24c brick red	1 50	1 50
311	36c brick red	1 50	1 50
312	48c brick red	1 75	1 75
313	60c brick red	2 00	2 00
314	72c brick red	2 50	2 50
315	84c brick red	6 00	6 00
316	96c brick red	4 00	4 00

Third color:

317	12c carmine	1 00	1 00
318	24c carmine	1 00	1 00
319	36c carmine	1 25	1 25
320	48c carmine	1 50	1 50
321	60c carmine	1 75	1 75
322	72c carmine	2 50	2 50
323	84c carmine	5 00	5 00
324	96c carmine	3 00	3 00

Various Emblematic Figures.

325	\$1 92 brown (Ceres)	4 50	4 50
326	3 00 scarlet (Victoria)	6 00	5 00
327	6 00 blue (Clio)	8 50	6 00
328	9 00 orange (Minerva)	12 00	10 00
329	12 00 green (Vesta)	15 00	12 00
330	24 00 purple (Friendship)	20 00	15 00
331	36 00 red (Commerce)	25 00	20 00
332	48 00 brown (Hebe)	30 00	25 00
333	60 00 violet (Indian)	40 00	30 00

(Cancelled by punching a hole through the stamp.)

334 Set of 25 Cardboard Proofs, \$10.00.

UNPAID LETTER STAMPS.

1879. Numeral in oval. "Postage Due" above
below, "U S." at sides.

351	1c	yellowish brown		0	⊕
			35		05
352	2c	yellowish brown	35		05
353	3c	yellowish brown	30		10
354	5c	yellowish brown	50		15
355	10c	yellowish brown	1 00		15
356	30c	yellowish brown	7 50		5 00
357	50c	yellowish brown	7 50		5 00

1889. Same as above.

358	1c	dk. br'n	10	05	358a	1c	red brn	10	05
359	2c	dk. br'n	10	05	359a	2c	red brn	10	05
360	3c	dk. b'rn	75	10	360a	3c	red brn	5 00	2 50
361	5c	dk. b'rn	20	10	361a	5c	red brn	25	10
362	10c	dk. b'rn	35	10	362a	10c	red brn	35	08
363	30c	dk. b'rn	2 50	1 00	363a	30c	red brn	1 50	1 00
364	50c	dk. b'rn	2 00	1 00	364a	50c	red brn	2 50	1 50

1891. Same as above.

365	1c	claret			05	02
366	2c	claret			05	02
367	3c	claret			15	02
368	5c	claret			15	05
369	10c	claret			25	05
370	30c	claret			1 20	1 00
371	50c	claret			1 50	1 00
372	Set of	Cardboard proofs			1 00	

1894. Numeral in diamond shaped frame U. S.
in upper corners.

	<i>Unwm'kd.</i>		<i>Wm.kd.</i>	
373	1c	bright claret	03	01
374	2c	bright claret	05	01
375	3c	bright claret	10	05
376	5c	bright claret	15	05
377	10c	bright claret	20	03
378	30c	bright claret	75	75
379	50c	bright claret	1 25	1 00

Return Stamps (also used to seal letters damaged or
found open while in transit): portrait of liberty in
small oval in centre of stamp.

380	"Post Obitum"	groundwork brown (engraved,) perf.	4 00	4 00
381	Lace groundw'k,	brown(engraved)perf.	10	10
382	Lace groundwork	(surface printing) light brown, perf.	05	05
383	.. same,	imperforate	2 00	2 00
384	.. same,	rouletted	50	50
	<i>Typographed, "Officially Sealed."</i>			
385	black on pink		15 00	15 00



Official Seal for postmasters' parcels, containing registered letters.
 386 Large size stamp, green 25 25

1873. OFFICIAL STAMPS.

Designs corresponding with general issue in use at the time with department-name above.

DEPARTMENT OF AGRICULTURE.

	○	⊕		○	⊕
400 1c straw	2 50	2 00	405 12c Straw	8 00	8 00
401 2c "	1 00	1 00	406 15c "	2 75	2 50
402 3c "	40	25	407 24c "	3 50	3 50
403 6c "	60	60	408 30c "	4 00	4 00
404 10c "	5 00	5 00	Complete set	26 00	25 00
408a Set of Cardboard proofs	\$3.00.				

EXECUTIVE.

409 1c carm.	8 50	8 50	412 6c carm.	15 00	15 00
410 2c "	8 00	8 00	413 10c "	12 00	12 00
411 3c "	6 50	6 50	Complete set	50 00	50 00
413a Set of Cardboard proofs	\$3.00.				

DEPARTMENT OF THE INTERIOR.

414 1c vermil.	20	15	420 15c vermil.	35	30
415 2c "	10	03	421 24c "	50	50
416 3c "	05	02	422 30c "	60	60
417 6c "	10	05	423 90c "	1 50	1 25
418 10c "	30	30	Complete set	4 00	3 50
419 12c "	30	30			
423a Set of Cardboard proofs	\$2.00.				

DEPARTMENT OF JUSTICE.

424 1c purple	1 50	1 50	430 15c purple	5 00	5 00
425 2c "	2 00	2 00	431 24c "	15 00	15 00
426 3c "	50	50	432 30c "	20 00	20 00
427 6c "	75	75	433 90c "	60 00	60 00
428 10c "	2 00	2 00	Complete set	100.-	100.-
429 12c "	2 00	2 00			
433a Set of Cardboard proofs	\$7.50.				

NAVY DEPARTMENT.

434 1c blue	75	75	440 12c blue	1 50	1 50
435 2c "	50	50	441 15c "	2 00	2 00
436 3c "	40	20	442 24c "	5 00	5 00
437 6c "	50	50	443 30c "	3 00	3 00
438 7c "	12 00	12 00	444 90c "	7 50	7 50
439 10c "	1 50	1 50	Complete set	32 00	32 00
444a Set of Cardboard proofs	\$3.00.				



POST OFFICE DEPARTMENT.

	○	⊕		○	⊕
445 1c black	20	20	451 15c black	1 00	1 00
446 2c "	20	20	452 24c "	75	75
447 3c "	05	01	453 30c "	60	60
448 6c "	30	10	454 90c "	1 50	1 50
449 10c "	1 50	1 50	Complete set	6 50	6 00
450 12c "	75	50			
454a Set of Cardboard proofs	\$2.00.				

DEPARTMENT OF STATE.

455 1c green	1 50	1 50	461 12c green	3 00	3 00
456 2c "	5 00	5 00	462 15c "	2 50	2 50
457 3c "	75	75	463 24c "	6 00	6 00
458 6c "	75	75	464 30c "	5 00	5 00
459 7c "	2 00	2 00	465 90c "	7 50	7 50
460 10c "	2 00	2 00	Complete set	34 00	34 00
466 \$2.00 green and black	17 50	17 50			
467 5.00 green and black	125 00	125 00			
468 10.00 green and black	60 00	60 00			
469 20.00 green and black	50 00	50 00			
469a Set of Cardboard proofs	\$7.50.				

TREASURY DEPARTMENT.

470 1c brown	35	15	476 12c brown	30	25
471 2c "	35	10	477 15c "	30	25
472 3c "	08	02	478 24c "	10 00	5 00
473 6c "	20	08	479 30c "	75	30
474 7c "	2 00	1 50	480 90c "	2 50	80
475 10c "	30	25	Complete set	15 00	8 00
480a Set of Cardboard proofs	\$2.50.				

WAR DEPARTMENT.

481 1c red	05	05	487 12c red	30	30
482 2c "	05	05	488 15c "	30	30
483 3c "	03	02	489 24c "	1 00	1 00
484 6c "	05	05	490 30c "	50	50
485 7c "	5 00	5 00	491 90c "	1 50	1 25
486 10c "	30	30	Complete set	7 50	7 00
491a Set of Cardboard proofs	\$2.00.				

ENVELOPES.

1853-1855. Head of Washington to left.

Die		○	⊕	Reps
600	3c red on white	1 50	25	*
601	3c red on buff	1 50	25	*



1853-1855. Continued.*Die 2.* Narrow label, straight ends. (Horner's die 4)

		○	⊕	Reps
602	3c red on white	4 00	2 50	*
603	3c red on buff	4 00	1 25	*

Die 3. Label with K ends. (Horner's die 3)

604	3c red on white	40 00	35 00	*
605	3c red on buff	10 00	3 00	*

Die 4. Wide label, straight ends. (Horner's die 5)

606	3c red on white	25 00	12 00	*
607	3c red on buff	40 00	15 00	*

Die 5. Wider label, curved ends. (Horner's die 2)

608	3c red on white	35	05	*
609	3c red on buff	25	05	*

Die 2. Narrow label, straight ends. (Horner's die 4)

610	6c red on white	3 00	3 00	2 00
611	6c red on buff	3 00	2 50	2 00
612	6c green on white	5 00	3 00	4 00
613	6c green on buff	5 00	4 00	4 00
614	10c green on white	25 00	10 00	7 50
615	10c green on buff	5 00	3 00	3 50

Die 4. Wide label, straight ends. (Horner's die 5)

616	10c green on white	10 00	6 50	6 00
617	10c green on buff	5 00	2 50	4 00

1857-61. Small Oval. Head of Washington to left.

618	3c red on white	75	25	50
619	3c red on buff	50	15	50
620	6c red on white	50 00	50 00	5 00
621	6c red on buff	60 00	60 00	5 00
622	10c green on white	30 00	30 00	5 00
623	10c green on buff	30 00	25 00	6 00

Head of Franklin to right.

Variety A. Bust points at G.

624	1c blue on white	7 50	6 00	*
625	1c blue on buff	75	60	*
626	1c blue on orange	15 00	15 00	*

Variety B. Bust points between A and G.

627	1c blue on buff	75	60	*
-----	-----------------	----	----	---

Variety C. Bust points at A.

628	1c blue on buff	75	60	*
-----	-----------------	----	----	---

Variety D. Bust cuts into frame between A and G.

629	1c blue on orange	15 00	15 00	*
-----	-------------------	-------	-------	---

Variety E. No period after postage.

631	1c blue on buff	5 50	5 00	*
-----	-----------------	------	------	---



Compound Envelopes.

	○	⊕
632 4c(1x3)red and blue on white	10 00	10 00
633 4c(1x3)red and blue on buff	10 00	10 00

1861. Small figures at side, on colored ground; inscription in double-lined initials (open letters).

634 3c pink on white	50	10
635 3c pink on buff	35	15
636 3c pink on blue	1 00	1 00
637 3c pink on orange	100 00	—
638 6c pink on white	5 00	5 00
639 6c pink on buff	1 00	75

1861. Large colored figures at side on plain ground.

640 10c green on white	50	50
641 10c green on buff	50	50
642 12c brown and red	6 00	5 00
643 20c blue and red	7 50	7 50
644 24c green and lake	7 50	7 50
645 40c red and black	7 50	7 50

1863-66. Head of Jackson, "U. S. Postage" above.

Die 1. 24mm. wide.

646 2c black on buff	1 00	1 00
647 2c black on orange	75 00	75 00

Die 2. 26 mm. wide.

648 2c black on buff	—	—
649 2c black on orange	75 00	75 00

Head of Jackson, "U. S. Post" above.

Die 1. 24mm. wide.

650 2c black on buff	1 00	60
651 2c black on orange	35	35

Die 2. 26mm. wide.

652 2c black on buff	15	10
653 2c black on orange	15	15

1864. Head of Washington, inscription on colored ground.

654 3c pink on white	15	05
655 3c pink on buff	15	05
656 3c brown on white	75	50
657 3c brown on buff	75	45
658 6c pink on white	60	60
659 6c pink on buff	60	60
660 6c purple on white	75	50
661 6c purple on buff	50	40
662 9c yellow on buff	5 00	4 50
663 9c orange on buff	2 00	1 50
664 12c reddish brown on buff	2 00	1 50



1864. Continued.

	O	⊕
665 12c brown on buff	3 00	2 00
666 18c red on buff	2 00	1 50
667 24c blue on buff	2 00	1 50
668 30c green on buff	2 00	1 50
669 40c pink on buff	2 00	1 50

1870. Reay issue. Various heads in oval.

Franklin. Bust points to the N of One.

670 1c blue on white	60	50
671 1c blue on amber	1 00	1 00
672 1c blue on orange	40	10

Jackson. Bust narrow at the back, small, thick figures of value.

673 2c chocolate on white	35	35
674 2c chocolate on amber	50	15
675 2c chocolate on orange	40	20

Washington. Queue projects below the bust.

676 3c green on white	10	02
677 3c green on amber	10	02
678 3c green on cream	20	05

Lincoln. Neck very long.

679 6c red on white	50	40
680 6c red on amber	50	40
681 6c red on cream	75	50

Stanton. Figure of 7 normal.

682 7c vermilion on amber	1 00	1 00
---------------------------	------	------

Jefferson. Curly hair; queue forms almost straight line with bust.

683 10c black brown on white	17 50	15 00
684 10c black brown on amber	17 50	15 00
685 10c brown on white	3 00	3 00
686 10c brown on amber	4 00	4 00

Clay. Single lock of hair at top of head.

687 12c dark violet on white	2 50	2 50
688 12c dark violet on amber	2 50	2 50
689 12c dark violet on cream	3 50	3 50

Webster. Portrait with whiskers.

690 15c orange on white	3 50	3 50
691 15c orange on amber	3 50	3 00
692 15c orange on cream	4 00	3 00

Scott. Straggling locks of hair at top of head.

693 24c purple on white	4 50	4 00
694 24c purple on amber	5 00	4 00
695 24c purple on cream	5 00	4 50

1871

...

...

...

...

...

...

...

...

...

...

...

...

...

...

...

...

...

...

...

...

...

...

...

...

...

...

...

...

...

...

...

...

...

1870. Continued.

Hamilton. Back of bust ends with a sharp, narrow label.

	○	⊕
696 30c black on white	3 50	3 50
697 30c black on amber	5 00	4 00
698 30c black on cream	5 00	4 50

Perry. Front of bust narrow and pointed

699 90c carmine on white	5 00	4 00
700 90c carmine on amber	5 00	4 00
701 90c carmine on cream	5 00	4 00

1874. Plimpton issue. Same portraits, slight die varieties.

Franklin. Die A. Bust nearly touches the frame at back and points to the end of E of One. O of Postage a distinct circle.

702 1c blue on white	4 00	4 00
703 1c blue on amber	3 50	3 00
704 1c blue on orange	50	40
705 1c blue on cream	8 00	8 00

Franklin. Die B. Bust well centered in frame, head inclined downwards.

706 1c dark blue on white	1 00	1 00
707 1c dark blue on amber	50	50
708 1c dark blue on orange	25	10
709 1c dark blue on cream	08	05
710 1c light blue on white	05	01
711 1c light blue on amber	05	03
712 1c light blue on orange	10	03
713 1c light blue on blue	30	25
714 1c light blue on fawn	20	20
715 1c light blue on amber manila (1886)	50	50

Jackson. Die A. Lettering indistinct, numerals thin and in circle, head of P of Postage is very narrow.

	○	⊕
716 2c brown on white	3 50	3 00
717 2c brown on amber	3 50	3 00
718 2c brown on cream	8 00	8 00

Jackson. Die B. Numerals in oval, fat type, bust broad.

719 2c brown on white	2 00	2 00
720 2c brown on amber	60	60
721 2c brown on orange	2 00	2 00

Jackson. Die B. Re-touched, numeral at left touches the oval.

722 2c brown on white	8 00	8 00
723 2c brown on amber	10 00	6 00



1874. *Continued.*

Jackson. *Die C.* Hair on forehead leaning forward, numerals short and thick.

	○	⊕
724 2c brown on white	2 50	2 50
725 2c brown on amber	3 00	2 00
726 2c vermilion on white	10	05
727 2c vermilion on amber	10	10
728 2c vermilion on cream	2 00	1 50
729 2c vermilion on blue	1 50	1 50
730 2c vermilion on fawn	10	05
731 2c pink on white	5 00	5 00
732 2c pink on blue	1 00	1 00

Jackson. *Die D.* Cut into bottom of bust nearly half circle.

733 2c vermilion on white	50 00	50 00
734 2c vermilion on amber	75 00	75 00

Washington. *Die A.* Large, thin numerals in oval.

735 3c green on white	60	25
736 3c green on amber	40	15
737 3c green on cream	1 00	40

Washington. *Die B.* Lettering large and clear, numerals in small, fat type.

738 3c green on white	10	02
739 3c green on amber	10	03
740 3c green on cream	20	05
741 3c green on blue	15	05
742 3c green on fawn	15	05

Washington. *Die C.* Top of head egg-shaped instead of round.

	○	⊕
743 3c green on white	20 00	6 00
744 3c green on amber	10 00	10 00
745 3c green on fawn	50 00	40 00
746 3c green on blue	30 00	25 00

Taylor. *Die A.* Thick topped numerals in ovals at sides.

747 5c blue on white	35	30
748 5c blue on amber	35	30
749 5c blue on blue	35	30
750 5c blue on cream	3 00	3 00
751 5c blue on fawn	10 00	10 00

Taylor. *Die B.* Numerals at sides, with straight, thin tops.

752 5c blue on white	40	30
753 5c blue on amber	30	30
754 5c blue on cream	5 00	5 00
755 5c blue on blue	50	40
756 5c blue on fawn	2 00	1 50

1874. Continued.

Lincoln. Short neck, lock of hair over forehead pointed.

	O	⊕
757 6c red on white	35	25
758 6c red on amber	50	30
759 6c red on cream	75	75
760 6c red on fawn	75	50

Stanton. Ends of numerals at sides turning up.

761 7c vermilion on white	25 00	100 00
762 7c vermilion on amber	5 00	4 00

Jefferson. *Die A.* Very large heads.

763 10c brown on white	3 50	3 00
764 10c brown on amber	3 50	3 00

Jefferson. *Die B.* Lock of hair in neck ending in sharp cut ends.

765 10c brown on white	40	40
766 10c brown on amber	50	50

Clay. Forehead almost semi-circle, while in Reay die it appears nearly as a straight line.

767 12c dark violet on white	3 00	2 50
768 12c dark violet on amber	3 50	3 50
769 12c dark violet on cream	5 00	5 00

Webster. Whiskers omitted, and hair on top of head parted.

770 15c orange on white	1 50	1 25
771 15c orange on amber	4 50	4 00
772 15c orange on cream	10 00	7 50

Scott. Breast of bust nearly oval, while in Reay die ending with sharp point; hair on top of head parted, while in Reay die appearing as if combed forward.

773 24c bright purple on white	6 00	5 00
774 24c bright purple on amber	6 50	6 00
775 24c bright purple on cream	6 50	6 00

Hamilton. Back of bust broad, while in Reay die ending in sharp pointed label.

776 30c black on white	1 50	1 25
777 30c black on amber	3 00	2 50
778 30c black on cream	6 00	5 00

Perry. Forehead almost a straight line, while in Reay die oval formed; inner points of shield bearing numeral extend on to the disk and do not touch oval line of frame.

779 90c carmine on white	2 00	1 50
780 90c carmine on amber	10 00	10 00
781 90c carmine on cream	10 00	10 50

1876. Centennial commemorative issue.	○	⊕
Hartford die. One line under word "Postage."		
782 3c green on white	50	40
783 3c red on white	35	25
784 3c crimson on white	5 00	3 00
Philadelphia die. Two lines under word "Postage."		
785 3c green on white	30	25
1882. Morgan issue. Portrait of Garfield.		
786 5c brown on white	20	20
787 5c brown on amber	25	20
788 5c brown on blue	5 00	5 00
789 5c brown on fawn	13 50	10 00
1883. Head of Washington; inscription in large letters.		
790 2c red on white	10	05
791 2c red on amber	20	10
792 2c red on fawn	20	15
793 2c red on blue	20	10
Head of Washington; inscription in small letters, four wavy lines in oval.		
794 2c red on white	10	03
795 2c red on amber	10	03
796 2c red on fawn	20	10
797 2c red on blue	30	20
798 2c brown on white	10	02
799 2c brown on amber	15	10
800 2c brown on fawn	25	20
801 2c brown on blue	50	50
1884. Same as above. Retouched die, four wavy lines in oval.	○	⊕
802 2c red on white	20	15
803 2c red on amber	25	25
804 2c red on fawn	50	50
805 2c red on blue	50	50
806 2c brown on white	10	05
807 2c brown on amber	25	25
808 2c brown on fawn	50	50
809 2c brown on blue	50	50
1884. New (so-called Kellogg) die with two wavy lines in oval.		
810 2c red on white	40 00	40 00
811 2c red on blue	35 00	35 00
812 2c brown on white	05	01
813 2c brown on amber	05	01
814 2c brown on fawn	10	02
815 2c brown on blue	10	03
816 2c brown on amber manilla (1886)	20	20
817 2c brown on oriental buff	20	10
818 2c lake on white	5 00	1 00

1881
1882
1883
1884
1885

1886
1887
1888
1889
1890
1891
1892
1893
1894
1895
1896
1897
1898
1899
1900
1901
1902
1903
1904
1905
1906
1907
1908
1909
1910
1911
1912
1913
1914
1915
1916
1917
1918
1919
1920
1921
1922
1923
1924
1925
1926
1927
1928
1929
1930
1931
1932
1933
1934
1935
1936
1937
1938
1939
1940
1941
1942
1943
1944
1945
1946
1947
1948
1949
1950
1951
1952
1953
1954
1955
1956
1957
1958
1959
1960
1961
1962
1963
1964
1965
1966
1967
1968
1969
1970
1971
1972
1973
1974
1975
1976
1977
1978
1979
1980
1981
1982
1983
1984
1985
1986
1987
1988
1989
1990
1991
1992
1993
1994
1995
1996
1997
1998
1999
2000
2001
2002
2003
2004
2005
2006
2007
2008
2009
2010
2011
2012
2013
2014
2015
2016
2017
2018
2019
2020
2021
2022
2023
2024
2025
2026
2027
2028
2029
2030
2031
2032
2033
2034
2035
2036
2037
2038
2039
2040
2041
2042
2043
2044
2045
2046
2047
2048
2049
2050
2051
2052
2053
2054
2055
2056
2057
2058
2059
2060
2061
2062
2063
2064
2065
2066
2067
2068
2069
2070
2071
2072
2073
2074
2075
2076
2077
2078
2079
2080
2081
2082
2083
2084
2085
2086
2087
2088
2089
2090
2091
2092
2093
2094
2095
2096
2097
2098
2099
2100

1884. Head of Jackson.	○	⊕
819 4c green on white	20	20
820 4c green on amber	20	20

1886.

821 4c (Jackson) green on blue	10 00	10 00
822 4c (Jackson) green on oriental buff	10 00	10 00
823 4c (Jackson) green on manila	20	20
824 4c (Jackson) green on amber manila	20	20
825 5c (Garfield) brown on oriental buff	10 00	10 00
826 10c brown on oriental buff	50	50
827 10c brown on blue	50	50
828 10c brown on manila	50	50
829 10c brown on amber manilla	50	50
830 30c black on oriental buff	5 00	5 00
831 30c black on blue	5 00	5 00
832 30c black on manila	5 00	5 00
833 30c black on amber manila	5 00	5 00
834 90c carmine on oriental buff	10 00	10 00
835 90c carmine on blue	10 00	10 00
836 90c carmine on manila	10 00	10 00
837 90c carmine on amber manila	10 00	10 00

1887. New designs for the four lower values, with numeral of value at bottom. The 30c and 90c are printed from the old dies in different colors.

Franklin.

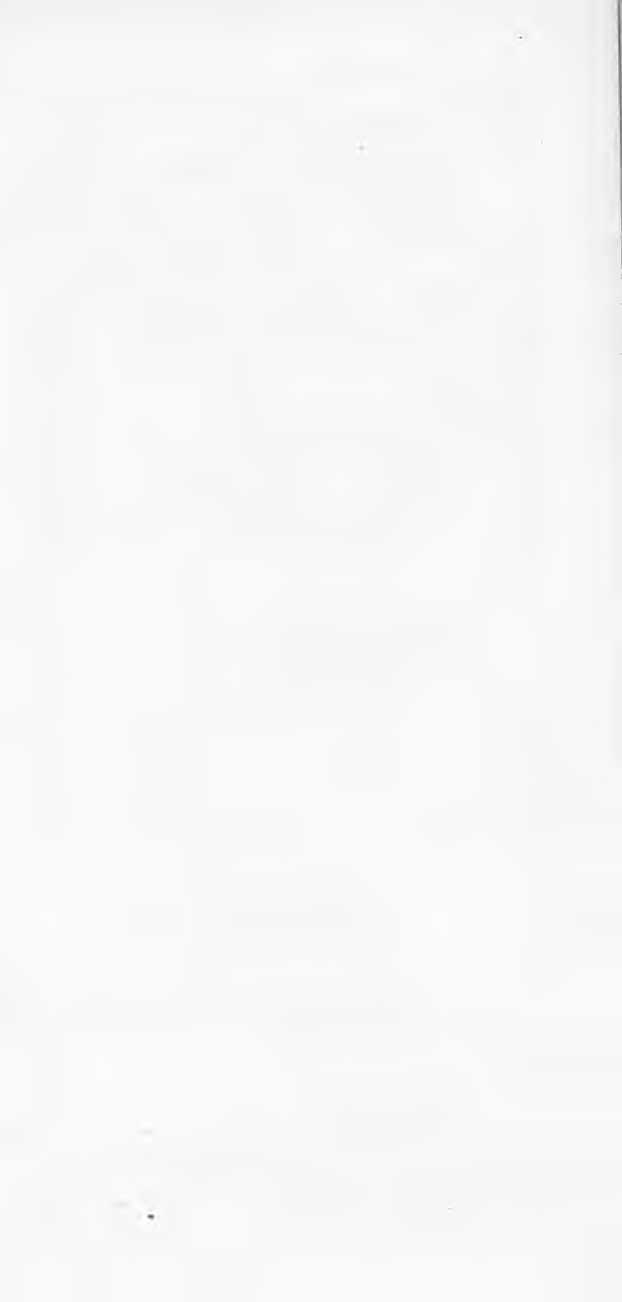
838 1c blue on white	03	01
839 1c blue on amber	03	01
840 1c blue on manila	03	01
841 1c blue on amber manila	03	01

Washington. *Die A* (so called "Rejected Die").
Bust points to fourth tooth in frame, no bar on arm of G in Postage.

842 2c green on white	35	30
843 2c green on amber	50	50
844 2c green on oriental buff	10 00	10 00
845 2c green on blue	40 00	40 00
846 2c green on manila	75 00	75 00
847 2c green on amber manila	100 00	100 00

Washington. *Die B.*

848 2c green on white	05	01
849 2c green on amber	05	01
850 2c green or oriental buff	05	01
851 2c green on blue	05	01
852 2c green on manila	05	01
853 2c green on amber manila	05	01



1887. Continued.

Jackson.		○	⊕
854 4c carmine on white		10	05
855 4c carmine on amber		10	10
856 4c carmine on oriental buff		25	15
857 4c carmine on blue		25	15
858 4c carmine on manila		25	25
859 4c carmine on amber manila		25	25
Grant.			
860 5c blue on white		10	05
861 5c blue on amber		10	10
862 5c blue on oriental buff		25	10
863 5c blue on blue		25	10
Hamilton.			
864 30c chocolate on white	2 00		2 00
865 30c chocolate on amber	2 00		2 00
866 30c chocolate on oriental buff	2 00		2 00
867 30c chocolate on blue	2 00		2 00
868 30c chocolate on manila	2 00		2 00
869 30c chocolate on amber manila	2 00		2 00
Perry.			
870 90c purple on white	4 00		4 00
871 90c purple on amber	4 00		4 00
872 90c purple on oriental buff	5 00		4 00
873 90c purple on blue	5 00		4 00
874 90c purple on manila	4 00		4 00
875 90c purple on amber manila	4 00		4 00
1893.	No period		Period
Columbian Envelopes:	after cent		after cent
876 1c blue	05 02		03 02
877 2c lilac	05 01		05 01
878 5c brown	* *		10 05
879 10c slate	15 10		* *

OFFICIAL ENVELOPES.

POST OFFICE.

1873. Large numeral of value in oval, "Official" above, "Stamp" below, "U." on left, "S." on right side. (Reay Issue).		○	⊕
880 2c black on canary		15	10
881 3c black on canary		10	02
882 6c black on canary		25	10
1874. Same as before, but numeral and "Official Stamp" larger. (Plimpton Issue).			
883 2c black on canary		10	05
884 3c black on canary		10	01

1874. Continued.

	○	⊕
885 6c black on canary	25	05
886 3c black on amber	75	50
887 2c black on white	75	50
888 3c black on white	50 00	50 00
889 6c black on white	50 00	50 00

1878. Postal Service Envelopes. Inscription, "United" above, "States" below; plain band across stamp bearing the words "Postal Service"

890 Black on white	10	03
891 Black on amber	50	30
892 Blue on amber	30	30
893 Blue on blue	30	30

WAR DEPARTMENT.

Designs identical with respective values of regular issues, but inscription altered to "War Dept." above, "U." in shield at left, and "S." in shield at right side.

	<i>Bright</i>	
	<i>Dark Red.</i>	<i>Red</i>
	○	⊕
1873. Reay Issue.		
894 1c on white	5 00	4 00
895 2c on white	10 00	10 00
896 3c on white	25	15
897 3c on amber	6 00	6 00
898 3c on cream	10	02
899 6c on white	75	50
900 6c on cream	25 00	25 00
901 10c on white	50 00	40 00
902 12c on white	1 25	1 00
903 15c on white	2 00	1 50
904 24c on white	3 00	2 50
905 30c on white	4 00	3 50

1875. Plimpton Issue.

	○	⊕
906 1c light red on white	2 50	2 00
907 1c light red on amber	75 00	70 00
908 2c light red on white	3 50	3 00
909 2c light red on amber	25	15
910 2c light red on orange	50	40
911 3c light red on white	15	10
912 3c light red on amber	25	05
913 3c light red on cream	10	02
914 3c light red on blue	15	05
915 3c light red on fawn	10	05
916 6c light red on white	60	15
917 6c light red on amber	2 50	2 00
918 6c light red on cream	10 00	10 00
919 10c light red on white	7 50	6 00



1875. Continued.

		○	⊕
920	10c light red on amber	100 00	75 00
921	12c light red on white	1 25	1 00
922	12c light red on amber	25 00	25 00
923	12c light red on cream	20 00	20 00
924	15c light red on white	3 50	3 00
925	15c light red on amber	25 00	25 00
926	15c light red on cream	20 00	20 00
927	30c light red on white	5 00	4 00
928	30c light red on amber	30 00	30 00
929	30c light red on cream	30 00	30 00

Official Newspaper Wrappers.

930	1873	1c on manila paper	05	02
931		2c on manila paper	7 00	6 00
932	1875	1c on manila paper	05	01
933		2c on manila paper	1 50	1 00

NEWSPAPER WRAPPERS.

All same designs as envelopes of corresponding years, manila paper.

			○	⊕
1861.	934	1c blue (variety A)	75	60
	935	1c blue (variety B)	75	50
	936	1c blue (variety C)	75	60
	937	1c blue (variety E)	25 00	25 00
1863.	938	"U. S. Postage" 2c black (die 1)	4 00	3 00
	939	"U. S. Post" 2c black (die 1)	50	50
	940	" 2c black (die 2)	1 50	1 00
	941	" 2c black (die 1) on straw paper	1 50	1 50
	942	" 2c black (die 2) on straw paper	1 00	1 00
1870.	943	1c blue (Reay issue)	25	10
	944	2c chocolate "	40	10
1874.	Plimpton issue.			
	945	1c blue, die A	75	40
	946	1c dark blue, die B	25	15
	947	1c light blue, die B	05	02
	948	2c brown, die A	2 00	2 00
	949	2c vermilion, die A	100 00	100 00
	950	2c brown, die B	1 00	50
	951	2c brown, die B retouched	2 00	1 00
	952	2c brown, die C	1 00	1 00
	953	2c vermilion, die C	10	05
	954	2c vermilion, die D	15 00	15 00
1883.	955	2c red (large letters)	5 00	5 00
	956	2c red (small letters)	20	20
	957	2c brown (small letters)	25	20



		○	⊕
1884.	958 2c red (retouched die)	2 00	1 50
	959 2c brown (retouched die)	50	30
1884.	960 2c red (Kellogg die)	25 00	25 00
	961 2c brown (Kellogg die)	05	05
1887.	962 1c blue	03	01
	963 2c green	03	01

LETTER SHEETS.

1886.	Three-quarter face portrait of Gen. U. S. Grant in oval, inscription below: "United States Postage two 2 cents." White paper.		
964	2c green	04	02

CONFEDERATE STATES.

PROVISIONAL ISSUES.

		○	⊕	On letter or entire
	Athens, Ga.			
1	5c red	400 00	400 00	450 00
2	5c purple, broad ornaments at sides	75 00	75 00	80 00
3	5c purple, narrow ornaments at sides	75 00	75 00	80 00

Baton Rouge, La.

4	2c green? (very doubtful)	—	—	—
5	5c green and carmine	70 00	60 00	75 00
6	5c green and carmine, error McCormick	100 00	100 00	125 00
7	5c green & carmine (variety)	125 00	100 00	125 00

Charleston, S. C.

8	5c blue	15 00	10 00	12 00
---	---------	-------	-------	-------

ENVELOPES.

9	5c blue on white p	15 00	12 00	25 00
10	5c blue on blue p	15 00	12 00	25 00
11	5c blue on buff p	15 00	12 00	25 00
12	5c blue on gold p	15 00	12 00	25 00

Columbia, S. C. (Envelopes.)

13	5c blue on white	20 00	15 00	25 00
14	5c blue on manila	20 00	15 00	25 00
15	5c blue on orange	20 00	15 00	25 00

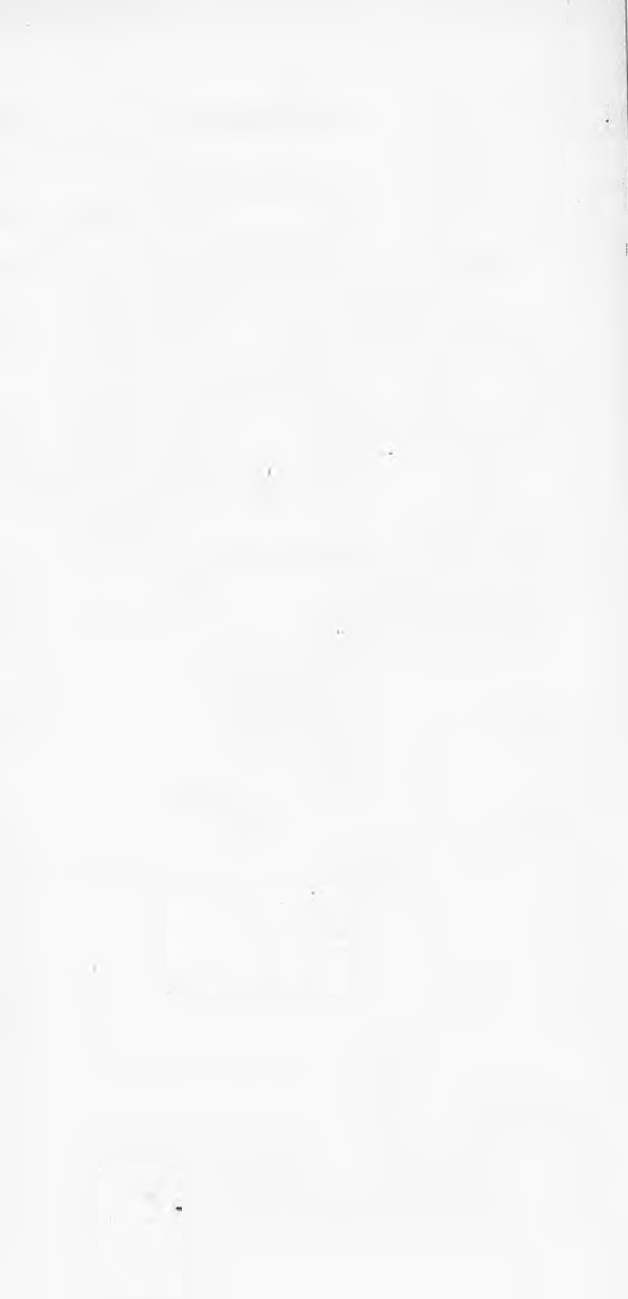
(Many varieties of papers.)



Confed. States— <i>Continued.</i>		○	⊕	On letter
Danville, Va.				
16	5c red	200 00	200 00	250 00
ENVELOPES.				
17	5c black on white p	—	50 00	100 00
18	5c black on buff p	—	50 00	100 00
Fredericksburg, Va.				
19	5c blue on bluish p	7 50	25 00	30 00
20	10c red on bluish p	40 00	75 00	100 00
(Ten varieties of each)				
Goliad, Texas.				
<i>Without name of Postmaster:</i>				
21	5c black on white p	—	250 00	350 00
22	5c black on rose p	—	400 00	500 00
23	10c black on white p	—	250 00	350 00
24	10c black on rose p	—	500 00	750 00
<i>With name of Postmaster:</i>				
25	5c black on white	—	250 00	350 00
26	10c black on white	—	250 00	350 00
27	10c black, error Goliad	—	750 00	1000 00
28	10c black on blue	—	750 00	1000 00
Greenville, Ala.				
31	5c red and blue	300 00	300 00	—
32	10c red and blue	400 00	350 00	—
Grove Hill, Ala.				
33	5c black	—	—	300 00
Kingston, Tenn.				
34	5c black on blue p	—	600 00	750 00
Knoxville, Tenn.				
35	5c red	25 00	20 00	25 00
ENVELOPES.				
36	5c blue	50 00	50 00	100 00
(Many varieties of papers.)				
Lenoir, N. C.				
37	5c blue and yellow	75 00	100 00	100 00
Livingston, Ala.				
38	5c blue	600 00	750 00	1000 00
Lynchburg, Va.				
39	5c blue	25 00	30 00	35 00



Confed. States—Continued.		○	⊕	On letter
Macon, Ga.				
40	5c black on blue	35 00	35 00	40 00
41	5c black on green	30 00	25 00	40 00
42	5c black on yellow (fancy frame)	75 00	75 00	100 00
43	5c black on yellow (plain frame)	200 00	250 00	250 00
Madison, Fla.				
44	3c gold on blue	—	1200 00	—
Marion, Va.				
45	2c black on white	50 00	75 00	75 00
46	3c black on white	—	250 00	300 00
47	5c black on white	—	250 00	300 00
48	5c black on blue	—	250 00	300 00
49	10c black on white	—	250 00	300 00
50	15c black on white	—	250 00	300 00
51	20c black on white	—	250 00	300 00
Memphis, Tenn.				
52	2c blue	1 00	20 00	25 00
53	5c red	2 00	7 00	7 50
ENVELOPE.				
54	5c red	—	25 00	50 00
(Many varieties of paper.)				
Mobile, Ala.				
55	2c black	50 00	40 00	50 00
56	5c blue	8 00	7 00	7 50
Nashville, Tenn.				
57	3c red (five types)	4 50	15 00	25 00
58	5c brown	20 00	20 00	25 00
59	5c carmine, bluish p	20 00	20 00	25 00
60	5c gray	30 00	35 00	35 00
61	10c green	100 00	100 00	125 00
New Orleans, La.				
62	2c blue on white	2 50	10 00	12 50
63	2c red on white	2 50	12 50	15 00
64	5c brown on white	2 50	3 00	3 50
65	5c brown on blue	3 00	3 50	4 50
66	5c red on blue	500 00	500 00	500 00
67	5c red on white	—	1000 00	—
Petersburg, Va.				
68	5c red [2 varieties]	25 00	15 00	20 00
Pittsylvania, C. H., Va.				
69	5c red	—	500 00	500 00



Confed. States— <i>Continued.</i>		○	⊕	On letter
Pleasant Shade, Va.				
70	5c blue	150 00	150 00	175 00
Rheatown, Tenn.				
71	5c red	150 00	150 00	200 00
Ringgold, Ga.				
72	5c blue [hand stamped]	50 00	100 00	150 00
Salem, N. C. [Envelopes.]				
73	5c black [Paid 5 in MS.]	7 50	15 00	20 00
74	5c black [Paid 5 printed]	5 00	7 50	15 00
[These stamps have been reprinted.]				
Tellico, Plains, Tenn.				
75	5c red [2 varieties]	100 00	150 00	150 00
76	10c red	150 00	150 00	150 00
Tuscumbia, Ala.				
77	5c black	—	1000 00	1500 00
Uniontown, Va.				
78	5c blue on white	750 00	750 00	—
79	5c green on bluish	1000 00	1000 00	—
80	10c red on bluish	1500 00	1500 00	—
Victoria, Tex.				
81	5c red on green glazed paper	—	—	1000 00
82	10c red on green glazed paper	—	—	1000 00

GENERAL ISSUES.

1861.	83	2c green (A. Jackson)	2 50	3 00	5 00
1852.	84	5c pale blue [J. Davis]	60	50	60
	85	5c dark blue	60	50	60
	86	5c pale green	50	40	50
	87	5c dark green	50	40	50
	88	5c olive green	75	75	1 00
	89	5c green, rouletted	10 00	10 00	12 50
	90	10c pale blue [Madison]	1 25	1 00	1 25
	91	10c dark blue	1 25	1 00	1 25
	92	10c carmine	6 00	3 50	4 00
	93	10c pale red	5 00	3 00	3 50
	94	5c light blue [J. Davis]	05	10	20
	95	5c dark blue	05	10	20
	96	5c lt. blue [bad print]	15	10	20
	97	5c dk. blue " "	15	10	20
	98	5c blue, ribbed p	1 50	1 50	—
	99	5c blue, perforated	—	—	—

Confed. States— <i>Continued.</i>		○	⊕	On letter
1863.	100 2c rose (Jackson)	30	2 00	2 50
	101 2c rose, laid paper	20 00	20 00	—
	102 Ten cents (Davis)	4 00	4 00	5 00
	103 10c blue, outer line	10 00	4 50	5 00
	104 10c pale blue	05	10	20
	105 .. same on ribbed p	25	50	75
	106 10c dark blue	05	10	20
	107 10c greenish blue	05	10	20
	108 10c blue, perforated	75	5 00	7 50
	109 20c dark green	10	2 00	2 50
	110 .. same, rouletted	—	25 00	50 00
1864.	111 1c orange [stamp never used]	50	—	—



D. H. Bacon & Co., Print. Derby, Conn.

