

9-1-17

CLASSICS
OF THE
BRITISH EMPIRE
4 OCTOBER 1973



STANLEY GIBBONS AUCTIONS
LONDON

Key to symbols and abbreviations**Explication des signes et abbréviations****Tabelle der Zeichen und Abkürzungen**

★	unused (with or without gum): non-oblitéré (avec ou sans gomme): ungestempelt (mit oder ohne Gummi)	
○	used: oblitéré: gestempelt	✈ Airpost: Poste Aérienne: Luftpost
☒	on entire: sur entier: auf Ganzsache	P Proof: Épreuve: Probedruck
S	Specimen: Spécimen: Vorlagestück	△ on piece: sur fragment: Briefstück
R	Reprint: Réimpression: Neudruck	
o.g.	original gum (hinged): gomme originale (avec charnière): Original-Gummi (mit Falz)	
c.d.s.	circular datestamp: cachet à date: Ortsstempel	
S.L.	Special Lot (available for inspection in the Auction Room on request): Lot Spécial (pour inspection dans la salle des ventes, sur demande): Sonderlos (Besichtigung im Versteigerungsraum nur auf Verlangen)	

IMPORTANT NOTICE

Because of the exceptional quality of the items in this sale it should be noted that all lots offered with certificates are sold on those certificates and extensions cannot be granted on such lots. There will be no acceptance of the return unless a stamp can be shown as being incorrectly described. It should be borne in mind that where catalogue numbers on certificates do not agree with those quoted, this is due to subsequent re-writing.

Catalogue numbers and prices quoted refer to Stanley Gibbons Part 1 British Commonwealth, 1974 edition.

BOUND VOLUMES OF THIS CATALOGUE

A strictly limited edition of 100 copies of this catalogue, with prices realised bound in hardback will be available after the sale, price £3.50 (post free). Please order without delay to avoid disappointment.

Auction of
CLASSICS
OF THE
BRITISH EMPIRE

Thursday, 4 October, 1973

Stanley Gibbons Auctions Ltd.
Drury House, Russell Street, London WC2B 5HD, England
Telephone: 01-836 7941. Telex: 28883. Cables: 'Philators, London WC2'

Bid Form *for mail bids only*

Special instructions

1. Bids should be submitted in Pounds Sterling only.
 2. Established clients or new ones unable to attend the sale personally, should mail their bids in the pre-addressed envelope provided.
-

Name

Address

Block capitals please

Please bid for me up to the limits if necessary on the following lots:

Lot No.	Limit £	Lot No.	Limit £	Lot No.	Limit £
.....
.....
.....
.....
.....
.....
.....

*Have you read the Special Instructions given above? Please write clearly and mail by quickest possible means in the special envelope marked 'AUCTION BID'.
Any special mailing instructions should be given overleaf.*

5256

**IMPORTANT: All bids are taken to be inclusive
of V.A.T. where applicable**

Sale 5256

Catalogue
of
**CLASSICS
OF THE
BRITISH EMPIRE**

TO BE SOLD BY AUCTION ON

4 OCTOBER 1973

at 2 p.m.



VIEWING OF LOTS

MONDAY, TUESDAY, WEDNESDAY, 1, 2, and 3 OCTOBER
10 a.m. — 4 p.m.

THURSDAY, 4 OCTOBER, 10 a.m. — 12 noon

OR BY PRIOR APPOINTMENT

STANLEY GIBBONS AUCTIONS LTD.

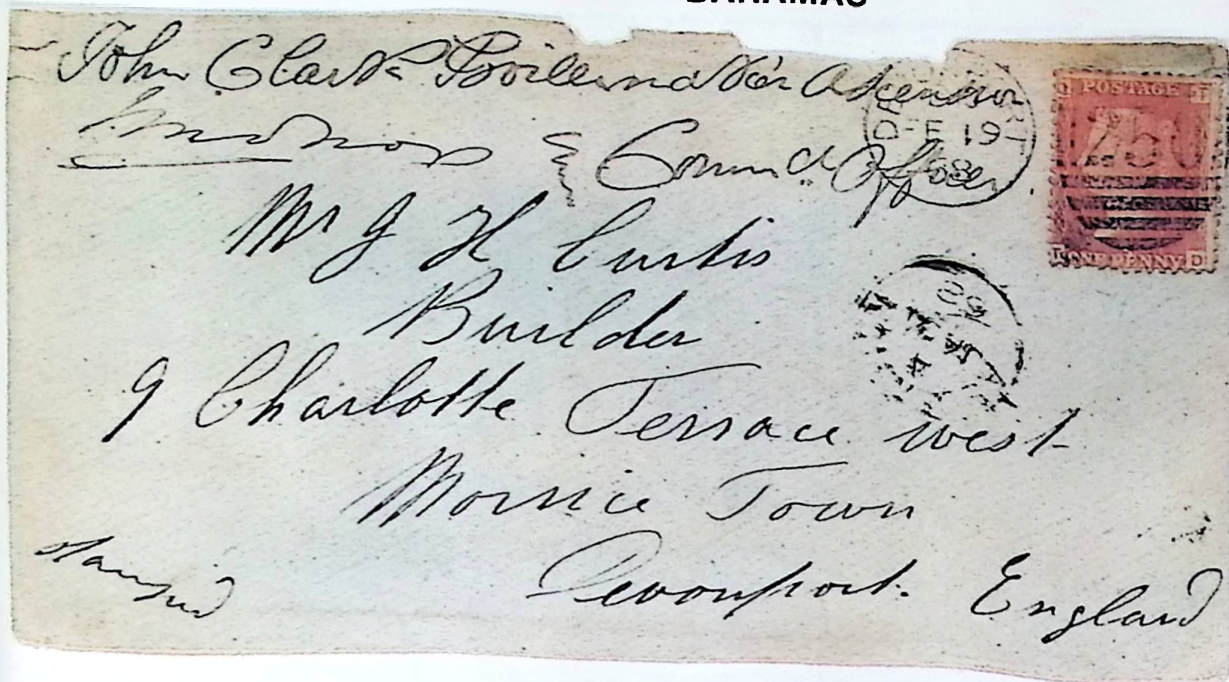
DRURY HOUSE, RUSSELL STREET, LONDON WC2B 5HD, ENGLAND

Telephone: 01-836 7941 Telex: 28883 Telegrams & Cables: 'Philators, London W.C.2'

(Coloured illustrations of stamps in this catalogue are as accurate as possible but are naturally not always identical to the actual stamps)

PRICE £2.00

ASCENSION — BAHAMAS



ASCENSION

Lot

Estimated Value

- 1 ☒ 1864, Great Britain 1d. rose-red, plate 71, used on cover to England, endorsed in manuscript, from *John Clarke, Boilermaker, Ascension*, tied by Ascension JA 31/68 c.d.s. and Devonport 250 duplex dated FE 19/68. A little ragged at top and part of flap missing. Early usage and full of character. **Ex Stamm.**

£200

BAHAMAS

- 2 ★ 1859 (10 June) Thin paper, 1d. dull lake (S.G. 2), sheet of 60, unused o.g., some faint toning in margins, stamps unaffected. Cat. £450. **Ex Tomasini.**



£275

BARBADOS



Lot

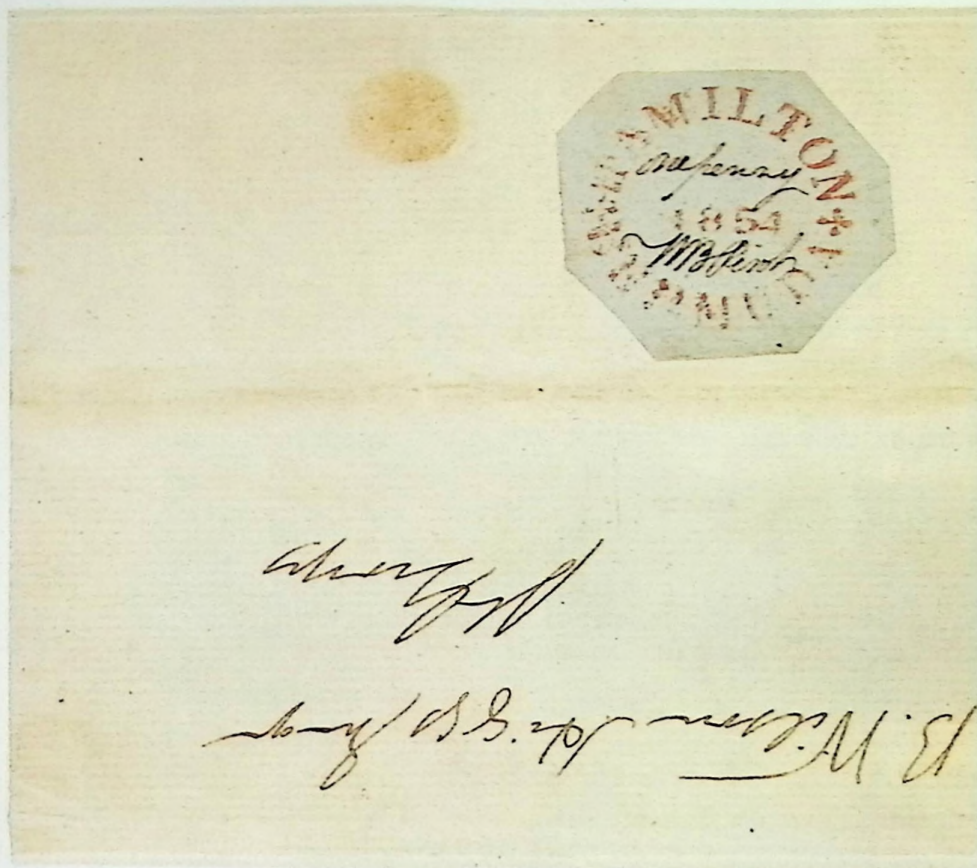
Estimated Value

- 3  1852-55 (2d.) greyish slate, bisected as 1d. (S.G. 4b) on a lovely entire letter to *Porto Rico* showing blue Havana 2½ handstamp and a fine strike of the red crowned circle handstamp *Paid at Barbados*.
Ex Amundsen and Tomasini.
- 4  1852-55 (4d.) brownish red (S.G. 5), corner crease, tied by numeral 1 cancellation to blue O.H.M.S. cover to St. Lucia. Backstamped Barbados AU 11/1856 and St. Lucia AU 12/1856, *this is the earliest known date of use of the 4d. stamp.* **Ex Amundsen and Tomasini.**

£550


£200

BERMUDA



Lot

Estimated Value

- 5  **1854 W. B. Perot, Postmaster's Provisional.** 1d. red on blue paper (S.G. 03), affixed to flap of entire letter dated April 16th 1855 from Hamilton to St. George's. **Ex Ferrary, Burrus and Tomasini.**

£35000

This was the first 'Postmaster' to be discovered, and recorded, in 1897. In 1922 at Gilbert's fifth Ferrary sale it realised 30,000frs. plus sales tax which was the equivalent of £556. The only other example extant is in the collection of Her Majesty the Queen.

BRITISH GUIANA



James Stuart Esq^r
George Town



Wm. H. 1855
Georgetown

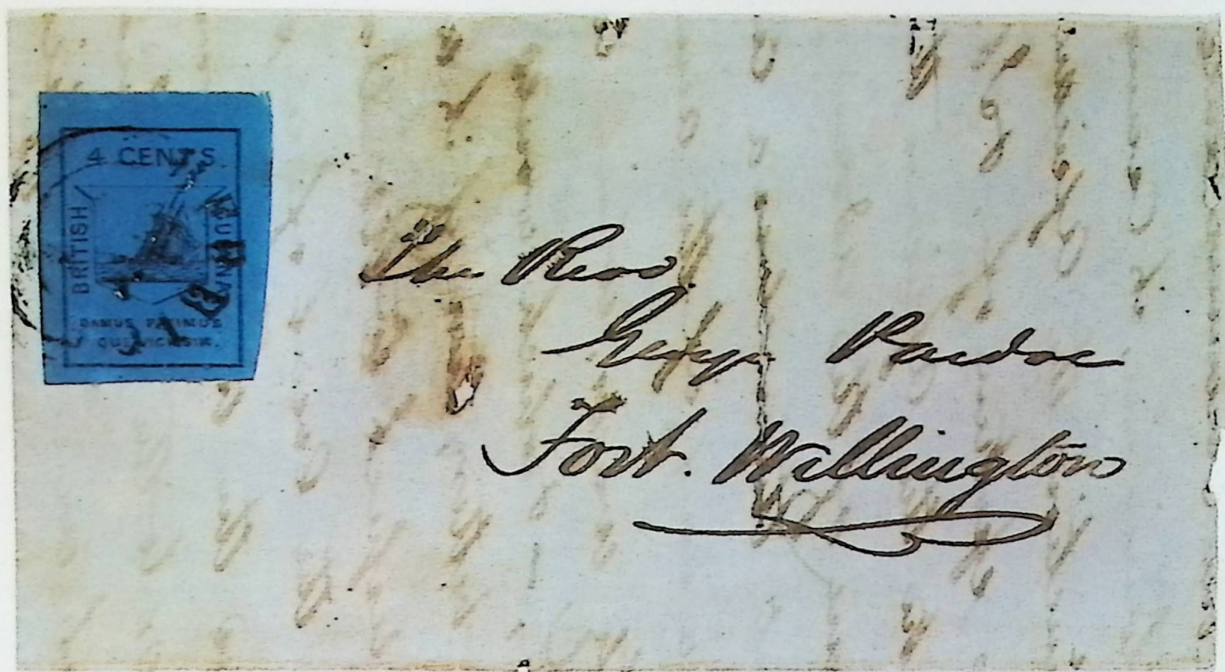
BRITISH GUIANA

Lot

Estimated Value

- | | | | |
|---|---|---------------------------------------------------------------------------------------------------------------------------------------------------------------------------------------------------------------------------------------------------------------------------------------------------------------------------------------------------------------------------------------------------------|--------------|
| 6 | ○ | 1850 'Cottonreel' 12c. blue (S.G. 5), horizontal pair initialled <i>E.D.W.</i> and postmarked Demerara MR 21/1851. Huge margins, exceptional quality. Ex Ferrary and Tomasini. | £2250 |
| | | | |
| 7 | ○ | 1852 1c. black on magenta (S.G. 9), strip of four being a complete row across the pane, large margins, superb colour; although these stamps are usually extremely fragile and nearly always fractured the <i>surface coloured</i> paper of this strip is pristine facially, slightly thinned on the reverse. Attractive cancellations, a major rarity. Ex Ferrary, Caspary, Burrus and Tomasini. | £3500 |
| | | | |
| 8 | ☒ | 1852 1c. black on magenta (S.G. 9), strip of four, superb colour, enormous margins, tied by filing crease and one of the A5C/5.3.185 (5) handstamps to an entire letter written at <i>Plantation Spartar</i> dated 1.3.1855 and addressed to Georgetown. A magnificent cover. Ex Burrus and Tomasini. | £8000 |

BRITISH GUIANA — BRITISH HONDURAS



BRITISH GUIANA

Lot

Estimated Value

- 9 ☒ 1852 4c. black on deep blue (S.G. 10), superb used on outer letter sheet, backstamped Berbice JA 11/1852, eleven days after issue, and addressed to Fort Wellington. The adhesive shows a few surface disturbances, as usual on this paper, and is the finest example known to us. **Ex 'Great'.** *R.P.S. Certificate (1970).*

£2000

BRITISH HONDURAS

- 10 ★ 1866 1d. blue (6) and 1s. green (6) together forming an unused o.g. block of 12 containing three vertical pairs of the 1d. and 1s. separated by the interpanneau margin (S.G. 4b). A magnificent showpiece of the utmost rarity. Four other pairs are thought to be extant and of these a block containing two is in the collection of British Honduras offered in this auction as lot number 12. Cat. £10,500+. **Ex Sir Henry Tucker.**

£8000



- 11 ★ 1888-89 'TWO' on 50c. on 1s. grey, unused o.g. having the surcharge applied *twice*, once in black and once in red (S.G. 35c). Initialled on the reverse by W. G. A. (ikman). Very rare. Cat. £1,000. **Ex Sir Henry Tucker.** *R.P.S. Certificate (1972).*

£750

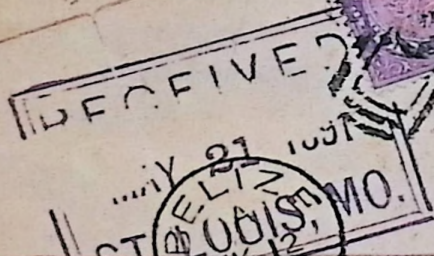
BRITISH HONDURAS

Selection of stamps from a remarkable collection offered as lot number 12.



Messrs The Scott Stamp & Co

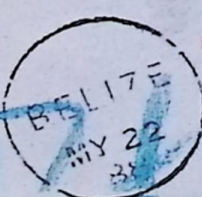
12 East 23rd St



26851



Germany
Registered



Herrn A. Laris

42 Schwanthalerstr



München



BRITISH HONDURAS

Selection of covers from a remarkable collection offered as lot number 12.



BRITISH HONDURAS

Lot

Estimated Value

12

1789—1901, the collection, consisting of entires, o.g. stamps in singles and multiples as well as used on covers, attractively presented in album, there now follows a brief résumé of the more important pieces.

1789-92 three entire letters of this very early period, two entires of 1849-60 with red crowned circle **Paid at Belize** handstamp. 1866 set in singles and blocks of 4 (S.G. 1-4), **1d in vertical interpanneau pair with 1s. (S.G. 4b) rare block of 4 Cat. £7,000** and the companion piece being **1s. in horizontal interpanneau pair with 6d. (S.G. 4a) three pairs in a block of 12 Cat. £7,500**. Three die proofs commence the 1872-79 issue which includes a strip of three of the **1d. imperf. between (S.G. 16a)**, 1882-87 o.g. set and two covers, 1888-92 Perf. $12\frac{1}{2}$ 2c. o.g. block of 6, **3c. (S.G. 24) unused without gum. Ex Caspary, R.P.S. Certificate and a pair on cover to Germany both very rare.** Perf. 14 ranges include 2c. on 6d. surcharge double (S.G. 25b) and two **slanting and curved foot** varieties; The unusual 'TWO' surcharge in **black (S.G. 35b) Cat. £1,200**, small crayon mark on face. R.P.S. Cert. 1891 'SIX' essays, two with bar, one without, a full sheet of 30 with bar and the two famous covers bearing four examples each, one with the bar, one without, both addressed to U.S.A. and ex John Luff. 1891 Provisional, good range incl. **6 and bar inverted** in red and in black (S.G. 43a, 44a) unused o.g., the latter slightly soiled. R.P.S. Cert. Also four covers with surcharge varieties. 1891-99 die proofs of the 25c. to \$5 duty tablets (5). The Revenue overprints of 1899 are a very fine lot including several varieties with the BEVENUE error on the 50c. in pair with normal (S.G. 69, 69a) R.P.S. Cert.

Condition throughout is well above average and although reasonably complete this is in the basic stamps and there is much scope for expansion. The collection is already of major International award status and would ideally suit the collector seeking a new field of research and investment.

£17500

CANADA



Lot

Estimated Value

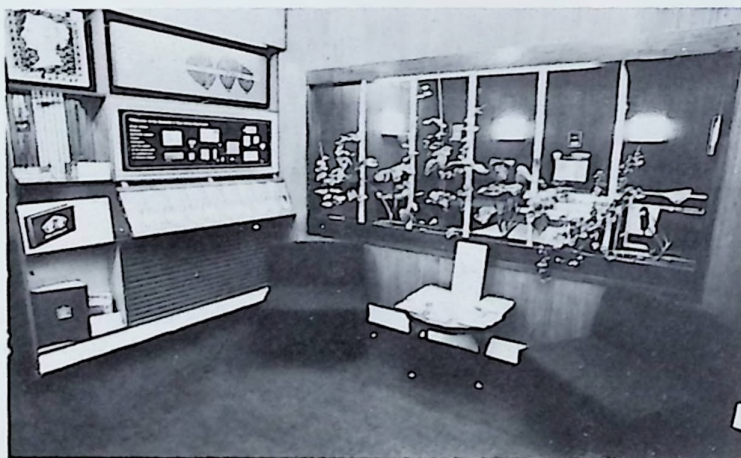
- | | | | |
|----|---|-----------------------------------------------------------------------------------------------------------------------------------------------------------------------------------------------------------------------------------------------------------------------|------|
| 13 | ☒ | 1851 6d. slate-violet (S.G. 2), tied by red Montreal NO 1851 c.d.s. to entire letter from the <i>Kennedy</i> correspondence to New York. Red curved CANADA and PAID handstamps. The adhesive is of lovely colour and has good margins. Very attractive. | £500 |
| 14 | △ | 1852-57 Medium hard wove paper 6d. slate-grey (S.G. 12), enormous example showing portions of two adjoining stamps, tied on small piece by numeral 21 cancellation. Ex Burrus and Fox. | £200 |
| 15 | ☒ | 1852-57 Medium hard wove paper 6d. brownish grey (S.G. 14), superb, tied by blue target cancellation to a neat small envelope addressed to New York State. JU 27/1857 c.d.s. of despatch. Adhesive has a tiny corner crease well away from the design. Ex Fox. | £500 |

Romano House for fine Classics

Very many of the exceptional items offered in this collection have been handled by Stanley Gibbons Ltd.

In fact, there are very few of the world's leading collections that do not contain stamps purchased from us. A stock of rarities that is unrivalled is always available for your inspection — that is why all discerning philatelists inevitably contact Gibbons when perfection is required. Apart from our world-famous shop at 391 Strand, we have now opened The Specialist and Rare Stamp Department at Romano House, 399 Strand, London W.C.2., where interested customers can browse over stamps at their leisure and where a warm welcome always awaits you by the senior sales staff, each a specialist in his own field.

Gibbons can also provide the opportunity to survey their stock in your home; and it does not matter if you live in Manchester or Minnesota, arrangements can be made for you to obtain the benefits of this unrivalled service.



Postal enquiries to
STANLEY GIBBONS LTD.
391 Strand, London WC2R 0LX
Telephone: 01-836 9707

CANADA

Lot

Estimated Value

- 16 ☒ 1855 10d. blue (S.G. 20) *top marginal* with good margins tied by black target cancellation to cover from Peterboro JA25/1855 by Packet through Liverpool, 13 FE 55, to Diss in Norfolk. Superb, a gem. *See front cover.*

£2000



- 17 ○ 1857 ½d. deep rose on wove paper (S.G. 23) vertical pair with the most enormous margins all round showing portions of adjoining stamps on all four sides. Light diagonal crease not detracting in any way from the superb appearance, lightly cancelled, fresh colour, a wonderful item. **Ex Fox.**

£500

- 18 ★ 1868 (March) *Ottawa Printing*, 2c. grass-green on thin crisp paper (S.G. 48), unused o.g. block of 16 (4 × 4), beautiful clear colour. Upper left stamp damaged. A *major Canadian showpiece of great rarity.* **Ex Firth.**

£3500

CAPE OF GOOD HOPE — CEYLON



CAPE OF GOOD HOPE

<i>Lot</i>			<i>Estimated Value</i>
19	○	1861, so-called 'Wood-block' error of colour 4d. carmine (S.G. 16), light cancellation leaving value tablet clear, tiny thin, one of the finest examples of the Carmine error known to us. Ex Tomasini.	£4000

CEYLON

20	★	1857 ½d. lilac on blue glazed paper (S.G. 3), unused o.g., some gum wrinkles, good margins and colour. Ex Tomasini.	£150
21	○	1859 4d. dull rose (S.G. 9) used, attractively cancelled, good margins all round, lovely colour, choice example. Ex Burrus and Tomasini.	£500
22	★	1859 8d. brown (S.G. 13) unused o.g., margins all round, brilliant colour. A gem. Ex De Silva, Amundsen and Tomasini. <i>R.P.S. Certificate (1960).</i>	£1400
23	★	1859 9d. purple-brown (S.G. 14) unused o.g., large margins all round showing portion of adjoining stamp at bottom, brilliant colour, very faint crease. A gem. Ex De Worms, De Silva, Amundsen and Tomasini. <i>R.P.S. Certificate (1959).</i>	£2750
24	★	1857 1s. dull violet (S.G. 16) unused without gum, margins all round. Very rare. Ex Hunt. <i>R.P.S. Certificate (1972).</i>	£450
25	★	1859 2s. blue (S.G. 19) unused o.g., slight gum creasing, large margins all round. Rare. Ex Tomasini. <i>B.P.A. Certificate.</i>	£500

CEYLON

26 ○

1857-59. The selection comprising 6d. purple-brown on blued, $\frac{1}{2}$ d. lilac on blue glazed paper, white paper 1d. blue, 1d. deep blue, 2d. deep green (ex Dale-Lichtenstein), 2d. yellow-green, 5d. chestnut, 6d. purple, 8d. brown, 9d. purple-brown, 10d. orange-vermilion, 1s. dull violet, $\frac{1}{9}$ green, $\frac{1}{9}$ pale yellow-green and 2s. blue, all lightly cancelled, good margins and well above average examples. A marvellous selection. **Ex Tomasini.**

£1000



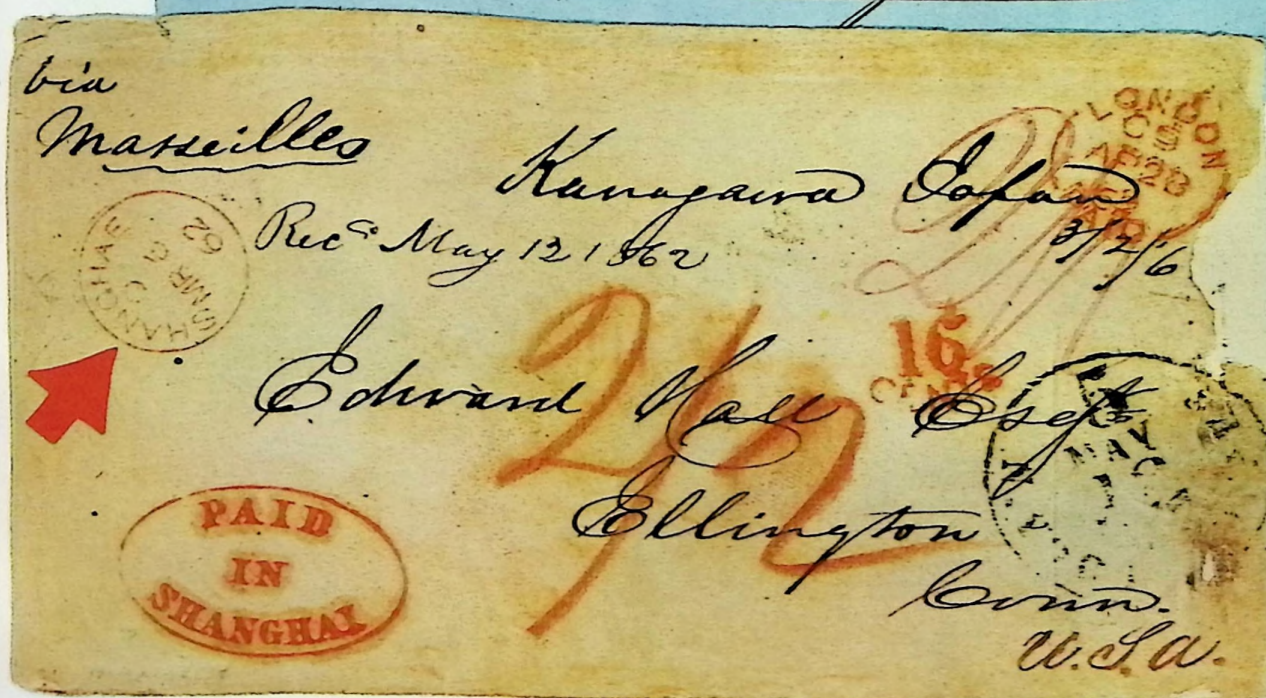
GAMBIA

27 ★

The *Tomasini* selection comprising de-luxe examples of the following: 1869 no watermark 4d. brown, marginal position 6, 4d. pale brown, marginal position 4, 6d. deep blue position 6, and 6d. blue, corner example, position 5, 1874 c.c. 4d. brown, 4d. pale brown, position 11 corner copy, 6d. deep blue, position 15 corner example, 6d. blue top right corner copy being position 5 with sloping tablet. All unused o.g. with good embossing, the first three stamps with slight toning. **Ex Tomasini.**

£400

HONG KONG and MAIL FROM JAPAN



Lot

Estimated Value

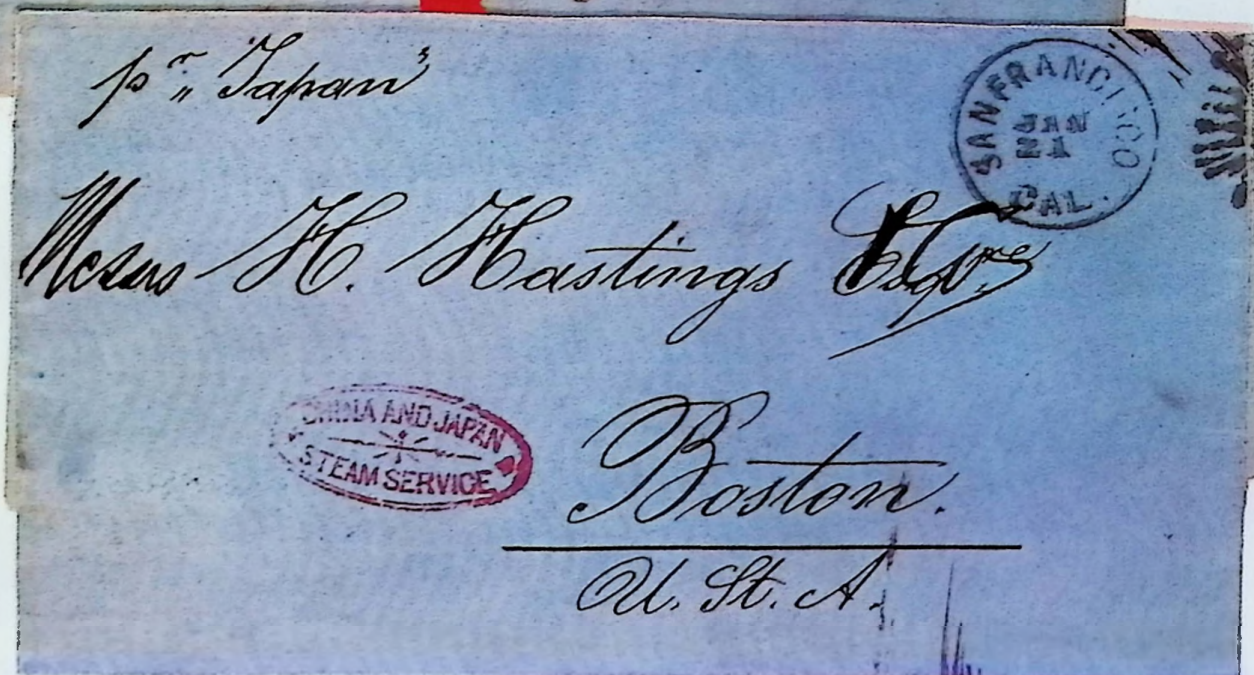
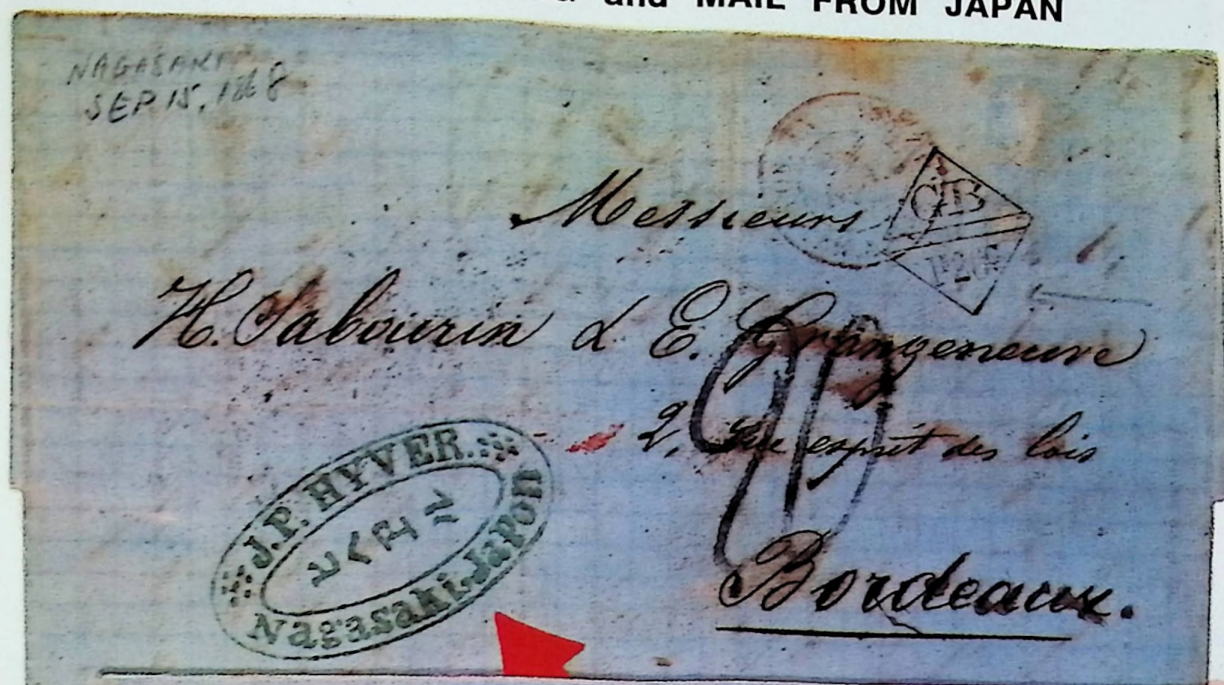
- 28 ☒ 1870 Watermark Crown C.C. 4c. grey variety perforated $12\frac{1}{2}$ (S.G. 9e) on entire from Canton to France, together with 1863-74 12c. perf. 14 adhesive. Both tied by B62 cancellations. Backstamped Hong Kong AU 25/70, then sent by French line to France. The perf. $12\frac{1}{2}$ is a great rarity on cover. **Ex Canman.**

£300

- 29 ☒ **Japan:** 1862, the famous cover from Kanagawa, Japan to U.S.A. illustrated on plate 26 of Lobdell and Hopkins and on plate 67 of Col. Webb's handbook. Dated in manuscript Kanagawa Japan 3/2/62, the cover was forwarded to Shanghai where it was backstamped Shanghai Paid MR5/62 in **black** and then handstamped Shanghai MR6/62 on the front in **red**. The unusual red oval Paid in Shanghai handstamp may have been applied at the same time but it is possibly a U.S.A. marking. The cover was then forwarded via Hong Kong and London to destination by N.Y. British packet. See Col. Webb's handbook page 311. One of the rarest and most interesting covers from Japan. **Ex Yarry.** See Back Cover.

£2500

HONG KONG and MAIL FROM JAPAN



Lot

Estimated Value

- 30 ☒ **Japan:** 1868 entire from Nagasaki to Bordeaux bearing the oval handstamp of the sender, J. P. Hyver, Nagasaki, Japan. Anglo-French accountancy marking of IF 26c. and 90 in manuscript. Backstamped Shanghai OC 13/68, Hong Kong OC 18/68 and Bordeaux arrival. **Ex Yarry.**

£250

- 31 ☒ **Japan:** 1868 entire letter from Yokohama to Boston via San Francisco showing a fine strike of the China and Japan Steam Service handstamp of the Pacific Mail Steamship Co. The 'Japan' had sailed on her maiden voyage on August 3rd, 1868 from San Francisco. The rare oval handstamp was used virtually as a marine sorter marking by the early American vessels on the Pacific route from 1867 to 1869. Less than a dozen voyages were involved and very few strikes of this handstamp are recorded. **Ex Yarry.**

£500

ON HER MAJESTY'S SERVICE

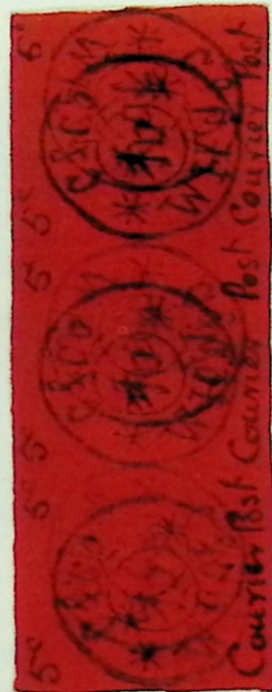
J. K. Morton Esq. Rm.

Am. S. Iperigina

Shanghai



"UNDAUNTED"



Miss Mary Harrison

7 Brompton Square
Kensington

HONG KONG — WEI HAI WEI

Lot

Estimated Value

- 32 ○ **Wei Hai Wei:** 1898 5c. local adhesive, used strip of three, bearing on the reverse one complete signature of G. K. Fergusson. He was a partner in the firm of Cornabé and Co. of Chefoo and in December 1898 organized a local post to convey letters over the 60 miles separating Wei Hai Wei and Chefoo. *Some 392 stamps of this denomination are thought to have been issued.* **Ex Canman.** £200
- 33 △ **Wei Hai Wei:** 1898 2c. local adhesive, used on triple combination large part cover front to London with Hong Kong 10c. adhesive with DE 19/98 Shanghai c.d.s. and three Chinese 2c. adhesives tied by Chefoo handstamp. *Very rare, the local post only being in operation for some four months.* **Ex Canman.** £250
- 34 ✉ **Wei Hai Wei:** 1899 second issue, 2c. dull red (2) and 5c. green (2) used together with Chinese 2c. adhesive (2), all tied by Chefoo 26 JAN 99 cancellations to an O.H.M.S. cover to Shanghai. Backstamped at Shanghai JA 29/99 Local Post. Addressed to a member of the Royal Navy aboard H.M.S. Iphigenia. *Very rare.* **Ex Canman.** £500

INDIA — SCINDE



- 35 ○ **Scinde Dawk:** 1852 $\frac{1}{2}$ a. white, $\frac{1}{2}$ a. blue and $\frac{1}{2}$ a. scarlet (S.G. 51-3), all very fine used, the last mentioned superb and *uncracked*. **Ex Tomasini.** £650
- 36 △ **Scinde Dawk:** 1852 $\frac{1}{2}$ a. white (S.G. 51), horizontal pair used on small piece, scissor cut and filing crease between and a trifle soiled. Scarce. **Ex Tomasini.** £200

INDIA



Lot

Estimated Value

- 37 ★ 1854 Unissued '9½ arches'. ½a. vermillion (S.G. 1), block of eight with sheet margin and inscription at left. **Ex Tomasini.** £450
- 38 ○ 1854 4a. blue and rose-red, Fifth Printing, Head Die III, Frame Die II, superb used block of four with inverted watermark. Cancelled I in rhomboid of bars, also showing part of a French arrival c.d.s. Huge margins showing the centre dividing cross at right. Magnificent. **Ex Burrus, Amundsen and Tomasini.** £750
B.P.A. Certificate (1964).

MALTA



- 39 ★ 1860 ½d. buff, variety *imperforate* (S.G. 1a), unused, a great rarity, only two or three other examples known. Cat. £1600. *B.P.A. Certificate (1949).* £1200

MALTA

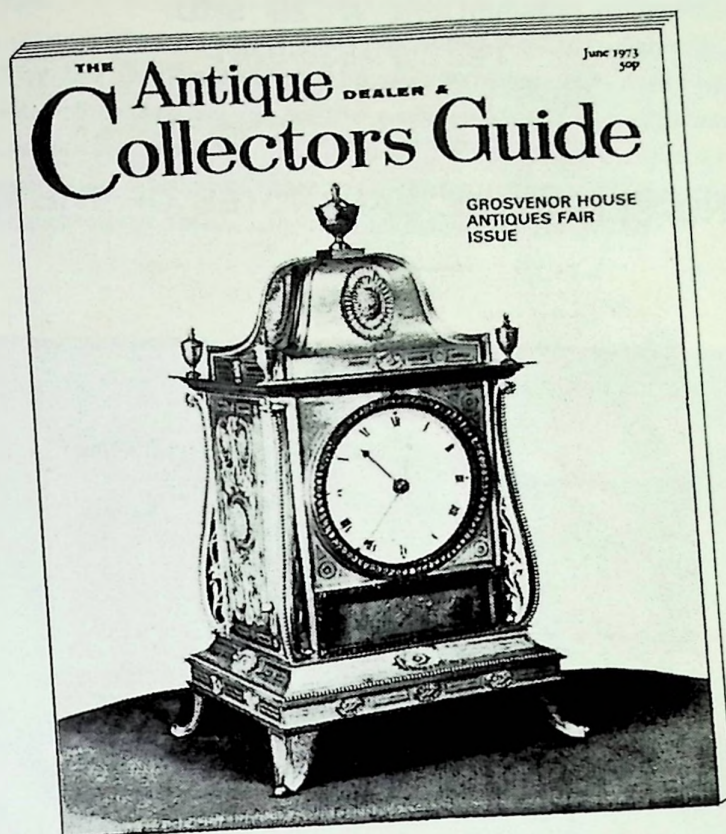


Lot

Estimated Value

- | | | | |
|----|---|-------------------------------------------------------------------------------------------------------------------------------------------------------------------------|------|
| 40 | ★ | 1863 Watermark Crown C.C. Perf. 14, $\frac{1}{2}$ d. buff (S.G. 5) unused o.g. interpanneau block of 10. Cat. £300. | £200 |
| 41 | ★ | 1875 Watermark Crown C.C. Perf. 14, $\frac{1}{2}$ d. yellow-buff (S.G. 13) unused o.g. interpanneau block of 24. Cat. £528. | £325 |
| 42 | ★ | 1893 4d. brown, variety <i>imperforate</i> (S.G. 27a), pair with the usual slight horizontal crease through country tablet. Rare and sought after. B.P.A. Cert. (1971). | £550 |

You cannot afford to be without



Britain's most widely-read antiques journal

ANNUAL SUBSCRIPTION:

U.K. £7.70	U.S.A. & CANADA \$21.00 (Airspeeded)	AUSTRALIA A\$16.50
---------------	-----------------------------------------	-----------------------

Apply to the Subscription Manager, City Magazines Ltd, 1-3 Wine Office Court, Fleet Street, London EC4A 3AL England.

Or 50p monthly from Newsagents and Booksellers throughout Britain. On sale last Friday in every month.

STANLEY GIBBONS CURRENCY LTD.
DRURY HOUSE, RUSSELL STREET
LONDON WC2B 5HD
Tel: 01-836-9707

BUY AND SELL RARE BANKNOTES OF THE WORLD



Set of \$10, \$20, \$50 and \$100 Mauritius Commercial Bank dated between 1839/43 are available on application. Price £220. (subject unsold).

(This rare issue of notes survives because a bank official intercepted them when they were being destroyed and kept a few sets back as a memento — 25 years ago).

MAURITIUS

The catalogue numbers of the stamps given in lots 43-72 are those taken from the 1974 Stanley Gibbons Part I catalogue. Due to re-writing of Mauritius in earlier editions, the catalogue numbers shown on certificates do not always agree with the latest listings. Buyers are advised that these stamps are classified by the certificates and by our experts, but there may be some instances where there are 'border-line' cases as far as the description of the impression and paper shades are concerned. It should be stressed that a stamp is not returnable because some other authority considers an impression to be earlier or later than that designated. The stamps in this section are well documented and buyers can safely rely on the descriptions given.

1848 'POST PAID'



Lot

Estimated Value

- 43 ★ **Earliest Impression**, 1d. orange-vermilion on thick yellowish paper (S.G. 3) unused, position 12 from the corner of the sheet with huge margins, brilliant colour, thinned at top right, corner crease outside design, a *fantastic example*. **Ex Dale-Lichtenstein. See Back Cover.**

£5000



- 44 ★ **Earliest Impression**, 1d. orange-vermilion on thick yellowish paper (S.G. 3) unused example again from position 12, good margins, lovely colour. Signed Diena. **Ex Ferrary and Tomasini.**

£4000

MAURITIUS

1848 'POST PAID'—continued



Lot

Estimated Value

- 45 ★ **Earliest Impression**, 2d. indigo-blue on thick yellowish paper (S.G. 4) unused, beautiful deep colour, position 10 from the corner of the sheet with large margins at left and good margins on the other three sides. *This stamp was in the first Ferrary sale and fetched 60,000frs. which with sales tax equalled approximately £1,300 in 1921. A gem. Ex Ferrary and Tomasini.*

£6000

- 46 ★ **Earliest Impression**, 2d. deep blue on thick yellowish paper (S.G. 5), beautiful companion example to the above, unused, heavily repaired at base, good colour and margins, particularly large at right, superb appearance. **Ex Ferrary and Tomasini.**

£1000



- 47 ○ **Early Impression**, 1d. vermilion on yellowish paper (S.G. 6) position 11 with part of the sheet margin at foot, cancelled '3'. A tiny thin and pinhole over the Queen's head, very fine. **Ex Burrus and Tomasini.**

£1200

- 48 ○ **Early Impression**, 1d. vermilion on blue paper (S.G. 6), good colour and margins, cancelled '1' in two circles in blue, tiny natural paper flaw. **Ex Burrus and Tomasini.**

£750

- 49 ○ **Early Impression**, 1d. orange-vermilion on thin greyish blue paper (S.G. 7), horizontal pair positions 8 and 9, with '14' cancellations faded out. **Ex Ferrary, Burrus and Tomasini.**

£1000

MAURITIUS

1848 'POST PAID'—continued



- | Lot | | Estimated Value |
|-----|---------------------------------------------------------------------------------------------------------------------------------------------------------------------------------------------------------------------------------------------------------------------|-----------------|
| 50 | ○ Early Impression , 1d. orange-vermilion on thin greyish blue paper (S.G. 7) position 7, good margins, lovely colour, neat '14' cancellation, very fine. Ex Burrus and Tomasini. | £1750 |
| 51 | ○ Early Impression , 2d. deep blue (S.G. 9), very early impression from position 1, brilliant example with light cancellation, the head showing through clearly, good margins. Ex Burton, Amundsen and Tomasini.
<i>R.P.S. Certificate (1944).</i> | £1500 |
| 52 | ★ Intermediate Impression , 1d. dull vermilion (S.G. 11) position 8, unused, good colour and margins, one or two minor surface blemishes. Ex Tomasini. | £500 |
| 53 | ○ Intermediate Impression , 1d. dull vermilion (S.G. 11) position 10, used, neat target cancellation, good colour and margins, tiny pinhole under chin. Ex Tomasini. | £300 |
| 54 | ○ Intermediate Impression , 2d. light blue on bluish paper (S.G. 15) position 4, good colour, huge margins, cancelled by '2' in circle, superb. Ex Dale-Lichtenstein and Tomasini. | £600 |
| 55 | ○ Intermediate Impression , 2d. blue on thin greyish paper, 'PENOE' error (S.G. 14a), early example from position 7, with light boxed INLAND cancel leaving variety clear. Two tiny pinholes. Ex Ferrary, Burrus and Tomasini. | £450 |

MAURITIUS

1848 'POST PAID'—continued



Lot

Estimated Value

- 56 ○ **Worn Impression**, 1d. red on bluish paper (S.G. 18), position 4, minor faults, huge margins and boxed INLAND cancellation. 2d. blue (S.G. 20), position 3, good colour and margins with '14' in circles cancel. Both **ex Tomasini**. Former also **ex Dale-Lichtenstein**.

£200

1859 'LAPIROT'



- 57 ○ **Early Impression**, 2d. deep blue on medium bluish grey paper (S.G. 27), position 4, target cancellation leaving the head clear. A lovely example. **Ex Burrus and Tomasini**.
- 58 ★ **Intermediate Impression**, 2d. blue on medium greyish paper (S.G. 28), unused horizontal pair, positions 9 and 10. Trace of crease, small stain on reverse and a tiny pinhole. A very fresh and remarkable pair. **Ex Hind, Burrus and Tomasini**.
- 59 △ **Intermediate Impression**, 2d. blue (S.G. 28), two singles, lovely colour and huge margins tied to small dated piece to which they have been hinged. Trace of filing crease in top margins. Very attractive. **Ex Tomasini**.

£350

£650

£250



MAURITIUS

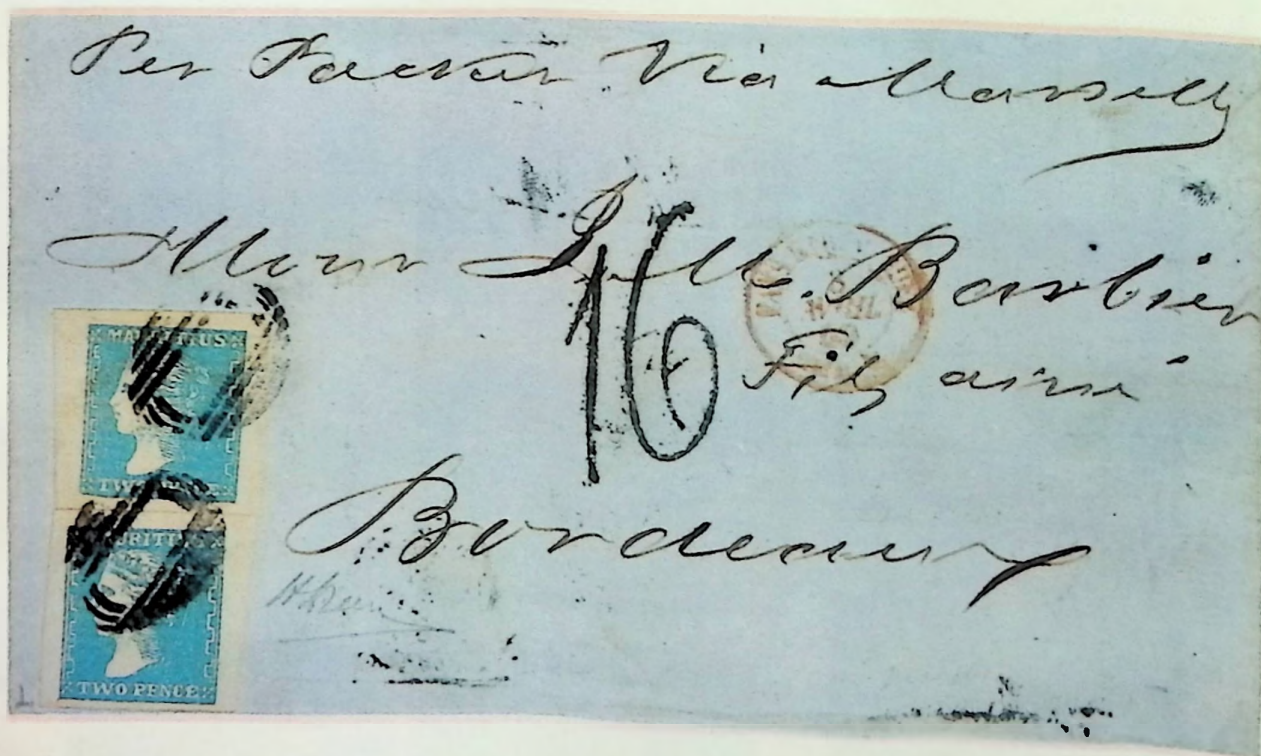


1859 'SHERWIN'

- 60 ○ 2d. deep blue (S.G. 30), position 2 with sheet margin, light cancellation leaving head virtually clear. Tiny thin in top margin well away from design. A gem. **Ex Hind, Burrus and Tomasini.** £800

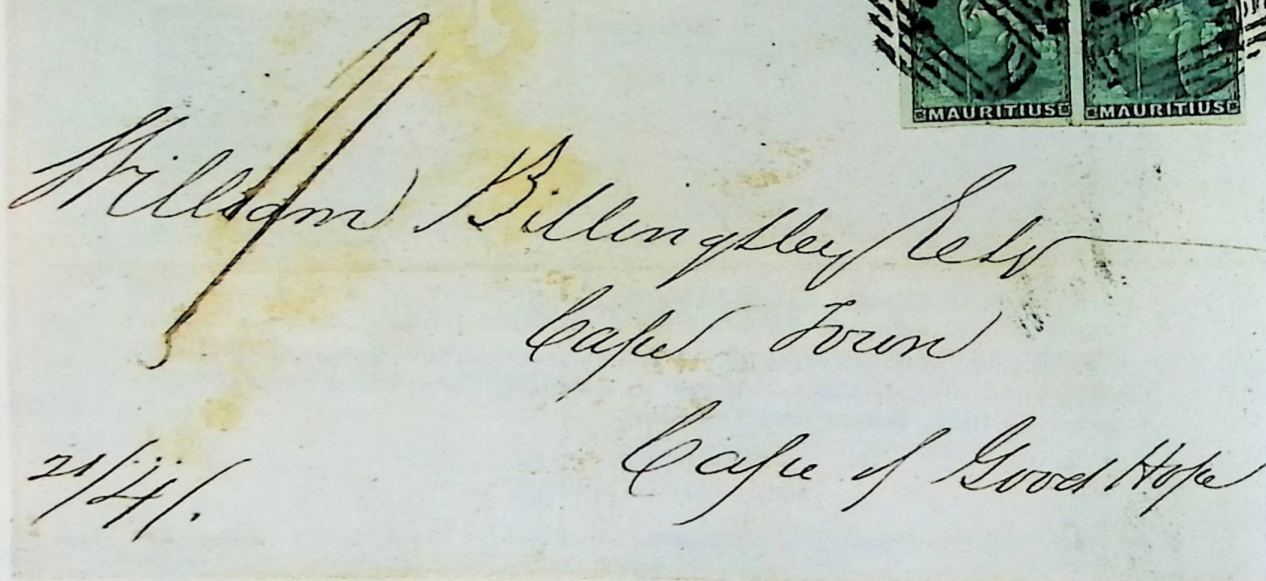
1859 'DARDENNE'

- 61 ○ 1d. dull vermilion (S.G. 32), used with cancellation leaving head showing through, good colour, large margins. **Ex Dale-Lichtenstein and Tomasini.** £200
- 62 ○ 2d. pale blue (S.G. 34), lightly cancelled, huge margins showing portion of adjoining stamp at base, fine colour. **Ex Hind, Amundsen and Tomasini. R.P.S. Certificate (1936).** £125



- 63 ☒ 2d. pale blue (S.G. 34), two large-margined examples, probably at one time a pair, lovely colour, tied by oval of bars cancellations to an entire letter dated 1860 to Bordeaux. Various transit markings on the reverse. The upper stamp is slightly creased from a cover fold. Very attractive. **Ex Dale-Lichtenstein and Tomasini.** £400

MAURITIUS



9

9
Lemington Street
Graville



MAURITIUS 'BRITANNIA' TYPES

Lot			Estimated Value
64	☒	1854 'FOUR-PENCE' green (S.G. 35), horizontal pair with good margins all round, tied by oval of bars cancellations on entire to the Cape of Good Hope, backstamped Cape Town, JU 17/1858, upon receipt. Parts of the side flaps have been removed. A great rarity. Ex Dale-Lichtenstein and Tomasini.	£750
65	★	1858-62 (4d.) green (S.G. 36), unused o.g. sheet marginal strip of 4, superb and fresh. Slight gum wrinkle on two stamps. Ex Dale-Lichtenstein and Tomasini.	£500
66	☒	1858-62 (4d.) green (S.G. 36), tied by oval of bars cancellation to entire letter dated 20 Juin 1859, from Port Louis to France. Backstamped Mauritius JU 20/1859 and Granville 22 JUIL 59. Lovely appearance. Ex Dale-Lichtenstein and Tomasini.	£600
67	★	1859 6d. blue (S.G. 42), unused o.g. block of 8, large margins, fresh colour, very fine. Ex Dale-Lichtenstein and Tomasini.	£550



68	○	1859, 1s. vermillion (S.G. 43), brilliant horizontal strip of 7, each stamp with a neat Paid cancellation. Good margins, a gem. Ex Dale-Lichtenstein and Tomasini.	£650
69	★	1861 1s. yellow-green (S.G. 45), unused o.g. block of four, with sheet margin at bottom. Brilliant colour and fresh. Ex Dale-Lichtenstein and Tomasini.	£250

MAURITIUS



Lot

Estimated Value

70 ★

1858-62 (4d.) green, (9d.) dull magenta, 1859 6d. blue and 1861 1s. yellow-green, marginal at left. All unused o.g. and very fine. (S.G. 36, 38, 42, 45).
Ex Dale-Lichtenstein and Tomasini.

£250

71 ○

1858-62 (4d.) green, (9d.) dull magenta, 1859 6d. blue and 1s. vermillion, both B53 cancels, 1861 6d. dull purple-slate, 1s. yellow-green, all very fine and well above average to superb (S.G. 36, 38, 42, 43, 44, 45), some **ex Dale-Lichtenstein**, all **ex Tomasini**.

£100

72 ☒

1859 6d. blue (S.G. 42), used on 1859 cover to England; 1859 6d. blue, used on part outer letter sheet to France; 1861 6d. dull purple-slate, two singles used on 1862 entire letter to Bordeaux. A fine trio, the first **ex Burrus and Amundsen**; the second **ex Dale-Lichtenstein** and all, including the third, are **ex Tomasini**.
See illustration above for first item.

£300

NEW BRUNSWICK



Lot

Estimated Value

- 73 ☒ 1851 3d. dull red, bisected (S.G. 2a) and used with 6d. olive-yellow (S.G. 4), superb, tied by blue Chatham '8' numeral grids to entire letter to Liverpool. Adhesives also tied by red Liverpool Packet handstamp of DE 5/56. Red *British 5d. claim* and *Conveyed by United States Packet* handstamps. A gem. **Ex Fox.**

£2500

NEW SOUTH WALES



Lot

Estimated Value

- | | | | |
|----|---|---------------------------------------------------------------------------------------------------------------------------------------------------------------------------------------------------------------------------------------------------------------------------------------------------------------------------|-------|
| 74 | △ | 1850, 1d. reddish rose, plate I, on soft yellowish paper (S.G.-3), horizontal pair with large margins, slight age staining, used on small piece, light cancellations. Ex Amundsen and Tomasini. R.P.S. Certificate (1959). | £200 |
| 75 | ○ | 1850, 1d. crimson-lake, plate II, on hard bluish paper (S.G. 9), strip of 5, positions 21 to 25, being the last row of the sheet. Huge margins and light cancellations. Tiny tear at top of left stamp into 'A' of 'POSTAGE', otherwise superb and very rare. Ex Ferrary, Caspary and Tomasini. | £600 |
| 76 | ○ | 1851, 2d. in a violet-blue shade, plate V (S.G. 37), strip of 5, positions 20 to 24, with large margins on three sides and adequate at right. Each stamp with '46' cancellation and faint vertical pen stroke in red. Position 20 shows the scarce <i>fan</i> variety (S.G. 37a). Ex Caspary, Burrus and Tomasini. | £200 |
| 77 | ★ | 1850, 3d. yellow-green (S.G. 42), exceptional upper right corner block of 4 with full original gum, creased through the upper pair horizontally and a light diagonal crease mainly in the top margin. Superb colour and impression, a showpiece of great rarity. Ex Hind, Burrus and Tomasini. | £5000 |
| 78 | ○ | 1850, 3d. yellow-green (S.G. 42), used strip of 4, positions 7 to 10, lovely colour, small corner fault at lower left, not affecting appearance. Ex Burrus and Tomasini. | £175 |

NEW SOUTH WALES



Lot

79 ★

1852, 1d. carmine on bluish, medium wove paper (S.G. 45), horizontal pair, left stamp the *Two leaves to right of SOUTH* variety (S.G. 45b), clear margins, brilliant colour, full original gum. *B.P.A. Certificate (1964).*

Ex Burrus, Amundsen and Tomasini.

Estimated Value

£550

80 ★

1852, 3d. dull yellow-green on medium, greyish blue wove paper (S.G. 67), block of 15 from the left of the sheet, almost full original gum, with sheet margins on three sides and showing portions of the five adjoining stamps at right.

At left, in addition to the *Store Keeper's Dept.* and *Stamp Office* handstamps is the manuscript endorsement '*Five of these stamps given this day to Sir Daniel Cooper as requested — 7 Oct 70.*'

The block has been folded, resulting in creases and small cracks but the colour and appearance are superb. This block was cut from the block of 38 presented to Sir Daniel Cooper, Governor of New South Wales.

Ex Sir Daniel Cooper, Ferrary, Hind, Caspary, Lilly and Tomasini.

£5000

NEW SOUTH WALES



Lot

Estimated Value

- | | | | |
|----|---|----------------------------------------------------------------------------------------------------------------------------------------------------------------------------------------------------------------------------------------------------------------|------|
| 81 | ★ | 1859 (6d.) vermillion and Prussian blue (S.G. 92a), superb corner block of 4 with original gum. Ex Snowden and Tomasini. | £300 |
| 82 | ○ | 1856 Diadem 1d. orange-vermillion (S.G. 102), used block of 12 with Sydney NO 11/1858 cancellations, one stamp just cut into, two small scissor cuts at top and a horizontal crease between two rows. A remarkable piece. Rare. Ex Burrus and Tomasini. | £200 |
| 83 | ○ | 1855 8d. golden yellow (S.G. 125), lovely vertical pair with large margins showing portions of an adjoining stamp at right, "88" cancellation. A gem. Ex Caspary and Tomasini. See previous page for illustration. | £325 |

NEW ZEALAND



Lot

Estimated Value

- 84 ○ **1855 London 1s. pale yellow-green (S.G. 3)**, strip of three, with the lightest of cancellations, the centre stamp with a small internal defect, the strip slightly stained on the reverse. Superb colour, large margins, a great rarity.
Ex Ferrary, Burrus and Tomasini. **£1200**



- 85 ☒ **1855 London 1s. pale yellow-green (S.G. 3)**, superb, tied by light cancellation to attractive blue cover to England. Wonderful colour, clear margins, very rare on cover. **Ex Amundsen and Tomasini. R.P.S. Certificate (1958).** **£1300**
- 86 △ **1855 Richardson 1d. red on blue paper (S.G. 4)**, horizontal pair, trace of thin or stain on left stamp, used on dated piece with neat cancellations and Petrie JU 14/1858 c.d.s. alongside. **Ex Caspary, Burrus and Tomasini.** **£250**

NEW ZEALAND



Lot

Estimated Value

- | | | | |
|----|---|----------------------------------------------------------------------------------------------------------------------------------------------------------------------------------------------------------------------------------------------------------------------------------------------------------------------|-------|
| 87 | ○ | <p>1855 Richardson 1d. red on blue paper (S.G. 4), magnificent horizontal strip of five from the top of the sheet. Light '18' cancellations, large margins, some small tears at top, altogether a wonderful piece of exceptional appearance. Ex Burrus and Tomasini.</p> | £1200 |
| 88 | ○ | <p>1855 Richardson 2d. blue on blue paper (S.G. 5), an outstanding 'Amundsen' example with huge margins showing portions of no less than five adjoining stamps. Ex Amundsen (realised £350) and Tomasini.</p> | £375 |
| 89 | ○ | <p>1855 Richardson 2d. blue on blue paper (S.G. 5), horizontal strip of five with good margins all round except at lower left and at bottom on one stamp where close. A trifle age stained on the reverse, neat '10' cancellations, lovely appearance and scarce. Ex Caspary, Burrus and Tomasini.</p> | £400 |
| 90 | ○ | <p>1855 Richardson 1s. green on blue paper (S.G. 6), very fine and lightly cancelled '1', an exceptional example. Ex Burrus and Tomasini.</p> | £250 |
| 91 | △ | <p>1858-59 White paper, 2d. deep ultramarine (S.G. 8a), fine horizontal strip of three, used on piece with Auckland FE 27/1858 c.d.s. on reverse. Ex Burrus and Tomasini.</p> | £275 |

NEW ZEALAND



Lot

Estimated Value

- 92 ☒ **1858-59 White paper**, 1s. dull emerald-green (S.G. 16), superb, tied by 'I' cancel to cover to England, backstamped Auckland 6 AUG/1861 and Salisbury OC 22. Very attractive and rare. **Ex Tomasini.**

£1200



- 93 ★ **1858-59 White paper**, 1s. blue-green (S.G. 17), superb unused o.g. example with large margins and of brilliant colour. **Ex Amundsen and Tomasini.** *R.P.S. Certificate (1962).*

£850

- 94 ○ **1862 Pelure paper**, no watermark, 1d. orange-vermillion (S.G. 81), used strip of five with Dunedin cancellations. Very minor faults, good margins all round except on stamp just touched at top. An attractive piece of great rarity. Lovely colour. **Ex Caspary and Tomasini.**

£750

- 95 ○ **1862 Pelure paper**, no watermark, 1s. deep green (S.G. 86), very large margins showing trace of adjoining stamp at right, lovely colour and light cancellation, exceptional for this stamp. **Ex Amundsen and Tomasini.**

£300

NIGER COAST



Lot

Estimated Value

- 96 ★ 1893 10s. in vermillion on 5d. (S.G. 41), unused o.g., a rare stamp, 32 such surcharges thought to have been made. Cat. £700. **Ex Pilkington.**
B.P.A. Certificate (1964).

£475

NOVA SCOTIA



- 97 ☐ 1851-57 1d. red-brown, 3d. deep blue, 6d. yellow-green (S.G. 1, 2, 5), used together on entire to make up a 10d. double rate from Halifax to the United States. Adhesives with margins clear to large, tied by oval grid on blue entire, backstamped Halifax MY 7/1855, front shows numeral '10' and Br. Packet Boston 9 May handstamp. *Four covers of the 10d. rate were known to Argenti.* A great rarity of magnificent appearance. **Ex Dale-Lichtenstein.**

£3500

NYASALAND

- 98 ★ 1895 £1 (S.G. 29), unused o.g., fresh, Cat. £130. *B.P.A. Certificate (1972).*
- 99 ○ 1895 £10 (S.G. 30), used with Tshiroma c.d.s., surface slightly disturbed, well centred and very scarce. *R.P.S. Certificate (1972).*
- 100 ★ 1896 £1 (S.G. 40), fresh, very slightly disturbed gum, fine colour, well centred. *B.P.A. Certificate (1972).*

£100

£200

£100

A. H. DUNN (PRINTERS) LIMITED

are proud to be associated with the production of
all Stanley Gibbons Auction Catalogues

MORGAN-WELLS STUDIO

are very pleased to have been commissioned to take
the colour transparencies for reproduction in this catalogue

For commercial or fine art photography contact
R. Bathurst, Incorporated Photographer
Morgan-Wells Studio Service
82 Southwark Bridge Road, London SE1 0AS
Telephone 01-928 3135

SAINT HELENA



SAINT HELENA

Prospective buyers are asked to bear in mind that of the known examples of the scarcer surcharge errors nearly all have defects of one type or another. They are, in general, judged on their rarity with condition being of secondary importance.

Lot	Estimated Value
101 ★ 1856 <i>Imperforate</i> 6d. (S.G. 1), block of six, unused o.g., good colour, margins close at top, shaved at right, touching at foot, large at left. Very scarce and attractive multiple.	£375
102 ★ 1856 <i>Rough perf.</i> 6d. (S.G. 2a), unused o.g. block of six, the centre pair with a vertical crease. Fine colour and attractive appearance, scarce multiple.	£200
103 ★ 1863 1d. lake (S.G. 4), two blocks of six, positions 109 to 111, 121 to 123 and 188 to 190, 200 to 202, some minor creasing as usual, both with original gum.	£350
104 ★ 1863 4d. carmine (S.G. 5), unused o.g. block of six, some creasing as usual, margins all round. A very rare multiple of exceptional appearance.	£350
105 ★ 1863 1d. lake, surcharge double (S.G. 3a), unused, trace of o.g., good margins three sides, just touched at left. Very rare. Cat. £350.	£200
106 ○ 1863 1d. lake, surcharge double (S.G. 3a), used with two pen cancels, large margins three sides, close at base, rare. Cat. £200.	£125

SAINT HELENA



SAINT HELENA

Lot		Estimated Value
107	○ 1863 4d. carmine, surcharge double (S.G. 5a), used, heavy horizontal crease, cut into as are all the few used examples of this variety known to us; nevertheless, this is a great rarity.	£300
108	★ 1863 6d. lake (1d.) error surcharge omitted (S.G. 6), unused, large margins three sides, just shaved at left. A great rarity. Cat. £1500.	£1000
109	○ 1864-67 Thin bar, 4d. carmine, surcharge double (S.G. 9a), used with light cancellation leaving the variety clear. Two small surface scrapes, otherwise very fine. A rare item. Cat. £600.	£400
110	○ 1865-68 Thick bar, 3d. purple, surcharge double (S.G. 18c), used, slightly stained, very rare. Cat. £500.	£300
111	○ 1865-68 Thick bar, 4d. carmine, surcharge double (S.G. 18d), used, some short perfs., rare. Cat. £500.	£300
112	★ 1865-68 Thick bar, 1s. deep yellow-green, unused o.g. vertical pair, lower stamp with surcharge double (S.G. 18e), and similar pair, lower stamp with surcharge omitted (S.G. 18L). <i>This was a case where the fifth row received a double surcharge leaving the tenth without any.</i> Both pairs fresh o.g. Cat. £2,400.	£1750
113	★ 1865-68 Thick bar, 1d. lake and 3d. purple, both imperforate (S.G. 18g, i), former is unused without gum, good side margins, little close top and base, the latter has wrinkled part o.g. and the design is touched at base, margins good other three sides. The 1d. is scarce. Cat. £350.	£175
114	★ 1871-73 Bar and Words same length, 1d. lake and 2d. yellow, both with blue-black surcharge (S.G. 26a, 27a). The 1d. is unused without gum, the 2d. has gum, one corner perforation clipped. Both are scarce. Cat. £530.	£200
115	★ 1884-94 2½d. ultramarine, vertical strip of three, centre stamp surcharge double (S.G. 40a), unused o.g., some paper adhering to the back of the variety, small thin on one normal and some perfs. reinforced. Horizontal crease through the variety as usual. One of six known, a spectacular variety. Cat. £1,200.	£400
116	★ 1884-94 2½d. ultramarine, vertical pair with margin at top, upper stamp doubly printed (S.G. 40b). Unused o.g., one or two faint tonings. One of twelve known. Cat. £700.	£250

SAINT HELENA

Lot

Estimated Value

- 117 ★ **1884-94** unused o.g. collection of *multiples*, beautifully presented in album with values from $\frac{1}{2}$ d. to 6d. covering the S.G. 34 to 44 period. Although a high degree of specialisation has been attained there is much scope for research and the inquiring mind would be well occupied in this field. There are many multiples of varying size and quantities include $\frac{1}{2}$ d. (611), 1d. (312), 2d. (146), $2\frac{1}{2}$ d. (108), 3d. mauve (30), 3d. violet (72), 4d. (84) and 6d. (48). Cat. approximately £750 but this is difficult to assess in view of the varieties which are known but not catalogued or priced.
Not illustrated.

£375

- 118 ☒ **1895-1902**, collection of covers, fronts and envelopes attractively arranged in album including *fancy* cancels, Boer War period is well represented with 'censor', unstamped, prison camp cachets etc, also two of 1907 and 1919. 48 items in all.
Not illustrated.

£325

SOUTH AUSTRALIA



Lot

Estimated Value

- 119 ○ 1855 London 1d. dark green, horizontal pair with '1' cancel, 2d. rose-carmine, horizontal strip of three with '31' cancels and 6d. deep blue horizontal strip of five, the last **Ex Caspary**. All with clear margins. **Ex Tomasini**.

£150



- 120 ○ 1855 London 6d. deep blue (S.G. 3), very remarkable block of 21 with numeral '4' cancellations. As one would expect with a multiple of this size, there are one or two small faults including a closed tear in the centre stamp of the top row. Clear margins all round and good colour. A showpiece. **Ex Beresford and Tomasini**.

£750

SOUTH AUSTRALIA



Lot

Estimated Value

- 121 ○ **1856-58 Adelaide** 1d. deep yellow-green with FE 16/1859 c.d.s., 2d. pale red cancelled 'I', 6d. slate-blue horizontal pair with diamond grid cancel and 1s. orange with neat cancel leaving clear profile. Superb selection. **Ex Tomasini.**

£150



- 122 ☒ **1856-58 Adelaide** 1d. yellow-green (S.G. 6), horizontal strip of six, clear margins all round, fine colour, lightly cancelled on re-addressed cover to London, backstamped on arrival MY 21/59. A great rarity. **Ex Amundsen and Tomasini.**
B.P.A. Certificate (1962).

£2500

- 123 ○ **1856-58 Adelaide** 1s. orange (S.G. 12), superb horizontal strip of three, large margins, light cancellations, lovely colour. A beautiful item. **Ex Ferrary and Tomasini.**

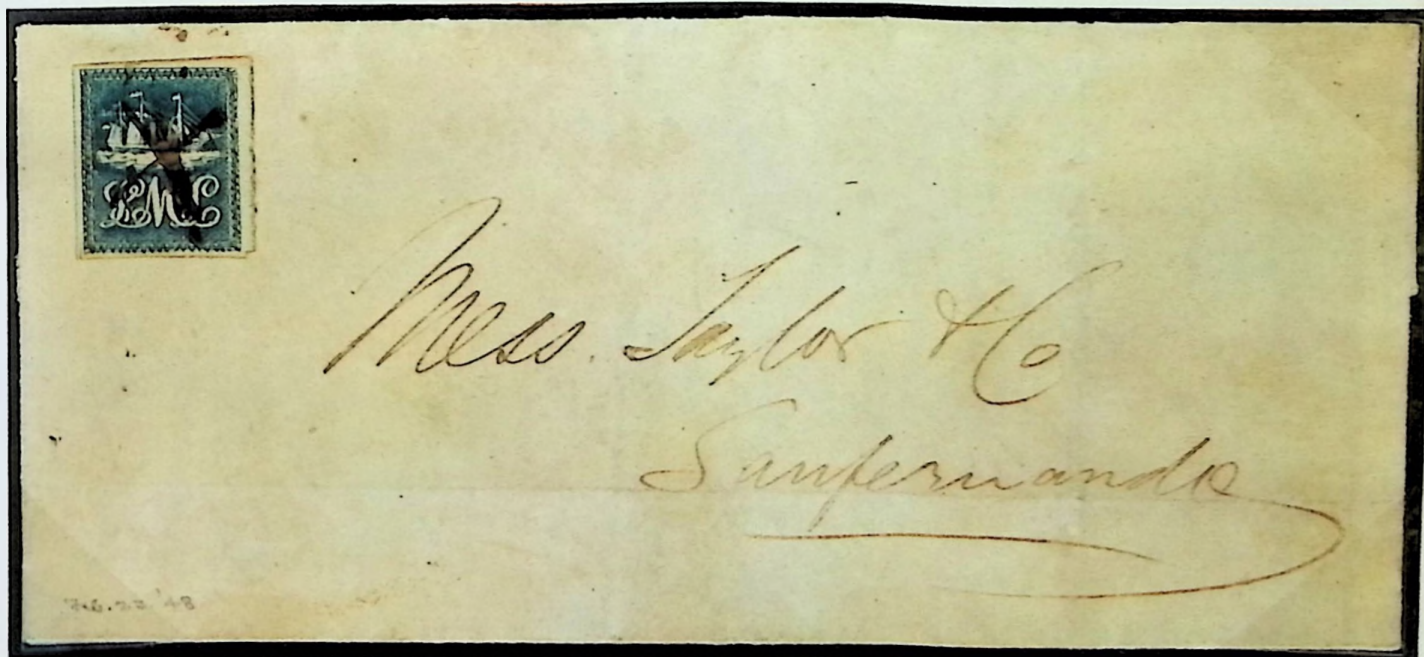
£250

TASMANIA



- | Lot | | | Estimated Value |
|-----|---|------------------------------------------------------------------------------------------------------------------------------------------------------------------------------------------------------------------------------------------|-----------------|
| 124 | ○ | 1855 Large Star, Imperforate, 1d. carmine (S.G. 14), beautiful used block of four, margins all round except at the lower right where the design is just touched. Upper right stamp crease. Very rare.
Ex Caspary and Tomasini. | £350 |

TRINIDAD



- | | | | |
|-----|---|----------------------------------------------------------------------------------------------------------------------------------------------------------------------------------------------------------------------------------------------------------------------------------------------------------------------------------------------------|--------------|
| 125 | ☒ | 1847 Lady McLeod 5c. blue (S.G. 1), good colour and huge margins showing portion of adjoining stamp at right, with manuscript cancellation on entire letter dated 23rd February 1848 at Port of Spain. The letter is addressed to <i>San Fernando</i> . Very fine and classic piece. Ex Moëns, Collins, Charlton-Henry and Tomasini. | £1250 |
|-----|---|----------------------------------------------------------------------------------------------------------------------------------------------------------------------------------------------------------------------------------------------------------------------------------------------------------------------------------------------------|--------------|

TRINIDAD



Lot

Estimated Value

- 126 ○ **1852-60 Lithographs.** First issue (1d.) blue, Feb. 1863 (1d.) blue on bluish cartridge paper. Second issue (1d.) greenish blue. Third issue (1d.) bright blue and Fifth issue (1d.) bluish grey (S.G. 13, 14, 15, 16, 19), few minor imperfections but generally exceptional. The last four **ex Charlton-Henry**, the penultimate example additionally **ex Amundsen** and all five **ex Tomasini**.
- 127 ★ 1882 ½d. lilac, watermark Crown CA (S.G. 100), pristine unused o.g., block of 10, probably the largest known multiple of this stamp. The fourth stamp in the top row is the *dropped position* which is a constant plate variety on the Britannia issues. Lovely deep colour, a gem. Cat. £750.

£750

£400



VICTORIA

- 128 ☒ 1856 (12th April) entire letter from Geelong via Melbourne to London bearing 1854-59 6d. dull orange imperf. (S.G. 44a), with huge margins showing portions of adjoining stamps on all four sides, used together with the imperf. 6d. lilac and green (S.G. 54) *TOO LATE* stamp, also very fine. **Ex Tomasini**.

£200

VIRGIN ISLANDS



Lot

Estimated Value

- 129 ★ 1867-70 1s. rose-carmine, error 'Missing Virgin' (S.G. 20a), position 4 of the sheet, with gum and the only example having gum known to us. *One of the most delightful and desirable philatelic rarities extant.* Very few copies recorded. **Ex Donne.** See Back Cover.

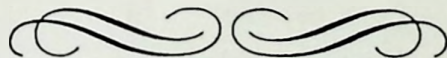
£8000



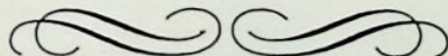
- 130 ★ 1899 $\frac{1}{2}$ d. yellow-green, unused o.g., marginal block of nine containing not only the two errors in the spelling of *HALFPENNY* (S.G. 43a, b), but also three horizontal pairs **imperfurate between** (S.G. 43c) and imperf. between stamp and margin. Vertical crease on the three right stamps not affecting any of the varieties. Unused o.g. and a spectacular piece. *Probably unique.* **Ex Charlton-Henry and Donne.**

£1250

End of Sale



Please mail bids early in the envelope provided—by Airmail if possible
List of Prices Realised for this sale 20p (Airmail to U.S.A. 60c.)



THE FIRST~EVER PHILATELIC CRUISE SAILS ON A ROYAL VIKING MAIDEN

On the maiden voyage of the Royal Viking Sea, to be precise. On December 2, she sails from Southampton and heads for the sunny Atlantic Islands and African Coast. 14 glorious days are spent cruising and calling at Madeira, the Canaries, Casablanca, Agadir and Lisbon, returning to Southampton.

It's a major event for Stanley Gibbons too. Because they've joined with the Royal Viking Line and Rosette's Travel Limited to make this the first-ever philatelic cruise. And that means a unique combination of leisurely living and stamp lore.

With lectures and seminars by stamp experts. And the company of famous philatelic personalities.

Auctions on board, films on stamps, rare stamp and cover displays. Plus a large selection of books on stamps in the ship's library.

And to commemorate it all, a special cover is being issued which will be franked at each port of call with the stamps of the respective countries.

All happening on the newest first-class liner afloat. A spacious, modern ship where 95% of passengers enjoy an ocean view (because all double cabins are on the outside). And where superb cuisine, friendly service and entertainment abounds.

Costing from £382, the first-ever philatelic cruise is a fabulous holiday as well.

For further details and reservations, contact Colin Beale at:

Rosette's Travel Limited,
68 Fleet Street, London EC4Y 1EU.
Telephone 01-353 4615.

ROYAL VIKING LINE 



Conditions of Sale of Stanley Gibbons Auctions Ltd.

subject to which all lots are offered at this auction

NOTICE. *Stanley Gibbons Auctions Ltd.*, the auctioneers, exercise great care to ensure that all statements as to cancellation, centring, colour, condition, date of issue or postmark, gum, margins, perforation, paper, printing, provenance, quality, sheet position, status, use and watermark in the lot descriptions are reliable and accurate, and that each item, unless the contrary is indicated, is genuine and authentic. The statements, however, are not intended to be, are not and are not to be taken to be statements of fact or representations of fact. They are statements of the opinion of the auctioneers, and attention is particularly drawn to clause 6 below.

1.—The highest bidder for each lot shall be the purchaser thereof. Each lot is put up subject to any reserve price imposed by the vendor. If any dispute arises as to the highest bidder the auctioneer shall have absolute discretion to determine the dispute and may put up again and re-sell the lot in respect of which the dispute arises.

2.—(a) The bidding and advances shall be regulated by and at the absolute discretion of the auctioneer, and he shall have the right to refuse any bid or bids.

(b) The purchaser of each lot shall immediately on its sale, if required by the auctioneers, give to them the name and address of the purchaser and pay to them at their discretion the whole or part of the purchase money. If the purchaser of any lot fails to comply with any such requirement the auctioneers may put up again and re-sell the lot; if upon such re-sale a lower price is obtained than was obtained on the first sale the purchaser in default on the first sale shall make good the difference in price and expenses of resale which shall become a debt due from him.

(c) Where an agent purchases on behalf of an undisclosed client such agent shall be personally liable for payment of the purchase price to the auctioneers and for safe delivery of the lot to the said client.

3.—(a) The auctioneers reserve the right to bid on behalf of clients and vendors, but shall not be liable for errors or omissions in executing instructions to bid.

(b) The auctioneers reserve the right before or during a sale to group together any lots belonging to the same vendor, to split up and to withdraw any lot or lots at the auctioneers' absolute discretion and without giving any reason in any case.

4.—Each lot shall be at the purchaser's risk from the fall of the hammer and shall be paid for in full before delivery and taken away at his expense by a purchaser in the United Kingdom within seven days of the date of sale and by a purchaser overseas within 14 days or such longer time as shall be agreed in writing between the auctioneers and the purchaser. If any purchaser fails to pay in full for any lot within the said time such lot may at any time thereafter at the auctioneers' discretion be put up for sale by auction again or sold privately; if upon such resale a lower price is obtained than was obtained on the first sale the purchaser in default on the first sale shall make good the difference in price and the expenses of resale which shall become a debt due from him.

5.—The auctioneers shall act as agents only and shall not be liable for any default of the purchaser or vendor.

6.—(a) Each lot shall be put up for sale as exhibited, with all faults and errors of description. Neither the auctioneers nor the vendor shall give any warranty to any purchaser or be liable for any fault or error of description or lack of genuineness or authenticity of any lot or item in any lot whether or not exhibited with any certificate of opinion or other supporting document or mark.

(b) Notwithstanding paragraph (a) of this clause, if after the sale the purchaser of a lot shall prove it to be not genuine or not authentic or wrongly described the purchaser shall be at liberty to return the lot provided that he within 21 days of the date of the sale gives notice in writing to the auctioneers of intention to question as the case may be the genuineness or authenticity or description of the lot and within 14 days after giving such notice (or, in exceptional cases, such longer time as in the absolute discretion of the auctioneers they may in writing allow) returns to the auctioneers at their salesrooms the lot in the same condition as at the date of sale. The onus of proving a lot to be not genuine or not authentic or wrongly described shall lie with the purchaser. Proof of the inability of a recognized expert committee to express a definite opinion shall not discharge such onus. If a lot is sold with a certificate of opinion of a recognized expert committee that the lot is genuine or authentic, a subsequent certificate of such committee that the lot is not genuine or not authentic shall discharge such onus. In the case of conflict of opinion as to genuineness or authenticity or description the auctioneers shall have the right to rely on the opinion of an expert reasonably regarded by them to be a reliable authority.

(c) If the purchaser of a lot shall discharge the onus in compliance with paragraph (b) of this clause the auctioneers shall rescind the sale and repay to the purchaser the purchase price paid by him.

(d) Notwithstanding paragraph (c) of this clause no lot may be returned if subsequent to the sale it has been immersed in water or treated by any other process unless the auctioneers' permission to subject the lot to such immersion or treatment has first been obtained in writing.

(e) A lot listed under "Collections and Various" or a lot stated to comprise or contain a collection, issues or undescribed stamps shall be put up for sale not subject to return and shall be taken by the purchaser with all (if any) faults, lack of genuineness and authenticity, and errors of description and number of stamps in the lot, and the purchaser shall have no right to return the lot.

7.—If a purchaser fails to comply with any condition of sale the damages recoverable by the auctioneers from him shall include any loss arising on, and the expenses of, resale.

Special Notice

1.—Each lot is received in these offices for sale subject to the "Conditions of Sale of Stanley Gibbons Auctions Ltd." and unless the contrary is expressed in writing by the intending Vendor each lot is received in these offices for unreserved sale, and will be sold without reserve. Written instructions as to reserves (if any) must reach these offices at the latest on the day before the date of the sale, and must be confirmed after receipt of advice note.

2.—It is necessary that correspondence from abroad relating to reserves should be in English and the prices in English currency.

3.—The auctioneers will not be responsible for the loss of stamps received inadequately mounted or arranged.

4.—Unsold lots which have not been cleared will, after the expiration of six months, be sold to defray expenses.

5.—Lots bid on and bought in by Vendor will be regarded as sold and liable for full commission.

6.—Settlement is made one month after sale, except when the purchaser resides abroad, when settlement may be slightly delayed. For earlier notification prepaid card should be sent.

7.—"Buy" bids can only be accepted on the condition that the auctioneers' discretion is absolute.

COLLECTION OF LOTS

Will local clients please note that purchases to be collected will be available from 2 p.m. on the Monday of the week following sale



via

Marseille

Kanagawa Sofa

Rec^d May 12, 1862

Edward Hall Esq
Ellington
Conn.
U.S.A.

PAID
IN
SHANGHAI



Stanley Gibbons Auctions Ltd.

Drury House, Russell Street, London WC2B 5HD, England

Price 20p. (free to subscribers)

Telephone: 01-836 7941 Telex: STANGIBBONS LONDON 28883 DH/AUC

LIST OF PRICES REALISED

(Lots not included in this list were unsold)

Sale 5256		Classics of the British Empire				4 October 1973	
Lot	£	Lot	£	Lot	£	Lot	£
1	210	28	450	55	375	82	325
2	550	29	1500	56	170	83	650
3	950	30	350	57	400	84	1000
4	325	31	450	58	500	85	1200
5	50000	32	150	59	350	86	200
6	2500	33	275	60	1500	*87	300
7	2750	34	600	61	175	88	400
8	12500	*35	900	62	150	*89	250
9	1750	36	200	63	300	90	425
10	8000	37	325	64	650	91	325
11	1000	38	1800	65	425	92	1100
12	16000	39	1750	66	450	93	850
13	600	40	260	67	650	94	700
14	450	41	450	68	550	95	425
15	550	42	550	69	275	96	550
16	2250	43	5000	70	250	97	4000
17	500	44	5000	71	170	98	100
18	2750	45	7500	72	250	99	170
19	6500	46	1500	73	3250	100	160
20	475	47	750	74	225	101	400
21	1200	48	650	75	750	102	200
22	1900	49	1800	76	400	103	325
23	3000	50	2250	77	5500	104	450
24	400	51	1500	78	150	105	225
25	800	52	275	79	650	106	130
26	1800	53	190	80	5000	107	250
27	500	54	850	81	550	108	1250

End of Sale

* Amendments to the descriptions of these three lots were announced during the course of the Sale.