
THE 'LIONHEART' COLLECTION OF GREAT BRITAIN AND BRITISH EMPIRE - PART XIV



SPINK

WHERE HISTORY IS VALUED

20 JANUARY 2021
LONDON



THE 'LIONHEART' COLLECTION OF GREAT BRITAIN AND BRITISH EMPIRE - PART XIV

Sale Venue:

The Royal Philatelic Society London

15 Abchurch Lane

2nd Floor

London

EC4N 7BW

tel +44 (0)20 7563 4005 fax +44 (0)20 7563 4037

Vat No: GB 791627108



Sale Details | Wednesday 20 January 2021 at 2.00 p.m.

When sending commission bids or making enquiries,
this sale should be referred to as **LIONHEART- 21011**

Viewing of Lots | At RPSL (in line with government guidelines)

Monday 18 January 2021 at 10.00 a.m. – 5.00 p.m.

| Private viewing by appointment only

Live platform



Your Specialists for this Sale



Josh Barber

jbarber@spink.com

+44 (0)20 7563 4080

Bids

Benedetta Fusco

Dora Szigeti

auctionteam@spink.com

+44 (0)20 7563 4108/4005

fax +44 (0)20 7563 4037

Technical Issues

Michael Lewis

support@spink.com

+44 (0)20 7563 4090/4089

Payment Enquiries

Veronica Morris

creditcontrol@spink.com

+44 (0)20 7563 4018

VAT Enquiries

John Winchcombe

jwinchcombe@spink.com

+44 (0)20 7563 4101

The Spink Environment Commitment: Paper from Sustainable Forests and Clean Ink

Spink has a long history of preserving not only collectables but our planet, too. We are proud to ensure that our policy of sustainability and conservation keeps up with Spink's growth, helping improve the environment for new generations of collectors.

We insist that our printers source all paper used in the production of Spink catalogues from FSC and/or PEFC suppliers and use non-hazardous inks. We also ask they hold the environmental standard ISO 14001.

Spink recycle all ecological material used on our premises and we encourage you to recycle your catalogue once you have finished with it.

Front Cover Illustrations: 68, 61, 39, 100, 94, 113, 244, 146, 43 Back Cover Illustrations: 195, 209, 177, 211, 54, 181, 225, 26

Inside Front Cover Illustration: 226 Inside Back Cover Illustration: 250

Group Chairman and CEO

Olivier D. Stocker

Director

Tim Hirsch FRPSL

Chief Financial Officer

Alison Bennet

Head of EMEAMira Adusei-Poku
mpoku@spink.com**Specialists****Stamps**Tim Hirsch FRPSL
Iain Murphy
David Parsons
Nick Startup
Neill Granger FRPSL
Dominic Savastano
Josh Barber
Thomas Fell
Axel Kendrick
Ian Shapiro (Consultant)
Guido Craveri (Consultant)
Christopher Green
George Yue (Consultant)
Alan Ho**Historical Documents**Thomas Fell
Neill Granger FRPSL
Ian Shapiro (Consultant)**Books**Emma Howard
Olivia Rae Marshall
Nik von Uexkull**Client & Auction Management**Geoff Anandappa (Consultant)
Dora Szigeti
Nik von Uexkull
Benedetta Fusco
John Winchcombe
Annie Sohail
Samantha Lanevi
Newton Tsang
Katrina Chan**PR & Marketing**Rita Ariete
Alzbeta Lanova**Chief Customer Officer**

Rita Ariete

Head of AmericasCharles J Blane
cblane@spink.com**Coins**Kelvin Cheung
Henrik Berndt
Richard Bishop
Tim Robson
Gregory Edmund
Barbara Mears
Kin Choi Cheung
Paul Pei Po Chow
Joseph Lam**Orders, Decorations & Medals**Marcus Budgen
Harry Blackett-Ord**Special Commissions**Ian Copson
Robert Wilde-Evans**Finance**Alison Bennet
Sue Pui
Marco Fiori
Mina Bhagat
Dennis Muriu
Veronica Morris
Nicholas Waring**Representatives For Australia**

Michael R. Downey - mdowney@spink.com

Representative For Canada

Timothy J. Stewart - tstewart@spink.com

Representative For Japan日本での弊社オークションへの出品・参加に関してのお問い合わせ
Alan Ho - japan@spink.com**Representative For South Africa**

Andrew Kennedy - akennedy@spink.com

www.spink.com

@SpinkandSon

 #Spink_Auctions Spink_auctions Spinkauctions Spink_auctions**Chief Operating Officer**

Mira Adusei-Poku

Head of Asia-PacificSue Pui
spui@spink.com**Banknotes**Kelvin Cheung
Barnaby Faull
Elaine Fung
Arnas Savickas
Paul Pei Po Chow**Bonds & Shares**Kelvin Cheung
Mike Veissid (Consultant)**Wine & Spirits**

George Koutsakis

IT & AdministrationMichael Lewis
Iveta Gaalova
Liz Cones
Slawomir Kolsut
Newton Tsang
Jacqueline Wong**Spink UK**69 Southampton Row
Bloomsbury
London
WC1B 4ET
Email:
concierge@spink.com
Tel: +44 (0)20 7563 4000
Fax: +44 (0)20 7563 4066**Spink USA**145 W. 57th St.
18th Floor
New York, NY
10019
Email:
usa@spink.com
Tel: +1 646 941 8664
Fax: +1 646 941 8686**Spink China**4/F and 5/F
Hua Fu Commercial
Building
111 Queen's Road West
Sheung Wan
Hong Kong
Email:
china@spink.com
Tel: +852 3952 3000
Fax: +852 3952 3038**Spink Asia**Registered at:
50 Raffles Place
#17-01 Singapore Land
Tower
Singapore 048623
Email:
singapore@spink.com**Spink Switzerland**Via Livio 8
6830 Chiasso
Switzerland
Email:
switzerland@spink.com
Tel: +41 91 911 62 00
Fax: +41 91 922 20 52

Extensions

Prospective buyers who wish to obtain an expert opinion on any lot (other than a mixed lot or lot containing undescribed stamps) are requested to notify Spink in writing not less than forty-eight hours before the time fixed for the commencement of the first session of the sale. If accepted by Spink, such request shall have the same effect as notice of an intention to question the authenticity of the lot for the purposes of Condition 3.4 of our Terms and Conditions for Buyers.

Notice of a request for an expert opinion must give the reason why such is required and specify the identity of the expert which will be subject to the agreement of Spink. All lots for which Certificates of Authenticity are desired must be submitted by Spink to the Expert Committee for choice.

Buyers are reminded that any lot(s) purchased “on extension” are subject to payment in accordance with our normal Terms & Conditions of Business. Settlement of any lots on extension should be made at the time of invoice payment. Overdue accounts are subject to interest charges.

Extensions requested on account of condition will not be accepted for expert opinions. Any Lot described as having faults or defects may not be returned should a certificate cite other faults or defects not included in the catalogue description.

Should Spink accept a request for an extension under the foregoing provisions of this paragraph, the fact may be stated by the Auctioneer from the rostrum prior to the sale of the lot.

It should be noted that any stamp accompanied by a Certificate of Authenticity is sold on the basis of that Certificate only and not on the basis of any other. No request for an extension will be accepted on such a stamp and the return of such a stamp will not be accepted.

Notes Concerning Descriptions

GUM: Original gum should be expected on unused stamps where appropriate, unless stated otherwise in the description:

mint	unused with original gum showing slight disturbance caused by previous hinge, which may be present in part or entirely removed
part original gum	unused with original gum significantly disturbed or heavily hinged
unmounted mint	original gum as issued
unused	without gum

COVERS: Should be expected to have minor nicks and tears usually from opening. Folded letters or covers normally have one or two file folds. These are not described unless of an exceptional nature and are not grounds for return.

entire letter	complete as sent with comments still attached to the outer address portion
entire	the outer portion of a folded letter but without contents
cover	an envelope

Symbols and Abbreviations

⊗	unmounted mint	d.s.	datestamp
★	unused	h.s.	handstamp
○	used	①	air mail
⊞	block of four	⑤	specimen
⊞	block larger than four	©	cancelled
⊞	used on cover, entire letter, etc.	⑤	essay
△	on piece	⑥	proof
var.	variety, varieties	F	forgery
cat.	catalogue, catalogue value	R	reprint
c.d.s.	circular datestamp		

References

Catalogue values and numbers are those taken from the latest available edition.

The use of Gibbons Specialised catalogues in Great Britain sales is clearly indicated. Where other catalogues are used they are mentioned by name.

Buyers are reminded that payment must be made within seven days from the date of sale (condition 5.4.1), and interest will be added for overdue accounts (condition 5.10.1.1).

Please note charges for credit card payments (condition 5.4.3(iii)).

Buyers are reminded that if they default on a successful bid that details relating to such default may be shared with other auction houses and live bidding platforms (condition 5.11).

Note: All buyers must read the notes concerning requests for Extensions printed on page 3 of this catalogue.

The Terms of that notice must be complied with fully under all circumstances.

Please note that 'Spink Live' is running on an improved on-line bidding platform, which is accessible through www.spink.com and also as a SpinkLive app available for download from the App Store.

You can bid online free of charge.

WEDNESDAY 20 JANUARY 2021

Commencing at 2.00 p.m.

GREAT BRITAIN



— 1 —

x1 ○

1840 1d. black Plate VI, EG with good to very large margins and crisp impression, and Plate VII, DG with line through check letters and good margins all round; both cancelled by red Maltese Cross; fine. Cat. £825

£200-250



— Ex 2 —

x2 ★

1841 blued paper 1d. red-brown unused block of six, good margin at foot, cut-into on other sides and with a few faults; 1847 Embossed 1/- green block of four, a few creases and small split at upper right, (B.P.A. Certificate 2017); 1862 9d. straw PL, centred to lower left with small part original gum, and I. R. Official 1885 £1 brown-lilac, unused without gum, stained, thin at lower left and diagonal crease, P.T.S. Certificate (2016); a useful group with huge catalogue value in excess of £80,000

£1,000-2,000



Ex 3



4

- x3 ○ 1841 1d. red-brown group of twelve cancelled by good clear strikes of Maltese Crosses “1” to “12”, a few cut-into on at least one side, very crisp strikes. S.G. 8m, 1-12, £2,900+ £200-300
- x4 ★ 1841 2d. blue Plate IV, SG, unused with good margins on three sides, enormous at foot and just cut-into at upper right; fine and crisp impression, regummed. A visually pleasing and fresh example. P.T.S. Certificate (2017). S.G. 14, £5,000 £250-350

1847-54 Embossed Issue



5

6

- x5 ☉ 1/- pale green, 10d. brown and 6d. violet, each overprinted “SPECIMEN”, the 1/- overprinted in red, the others in black; the 6d. with small thin in the upper margin, otherwise a fine, attractive and scarce trio. S.G. 54s, 57s and 58s, £9,000 £1,500-2,000
- x6 ☉ 1/- pale green overprinted “SPECIMEN” in red, three good margins and just touching the frameline at foot, without gum; fresh and fine. R.P.S. Certificate (2014). S.G. 54s, £2,500 £500-700



7

- x7 ☐ 10d. brown, Die II block of four, two just touched otherwise with good margins and showing a trace of the adjoining stamp at upper right, indistinctly cancelled; a few minor imperfections, nevertheless a rare block, Karl Louis records only four other blocks of four. Specialised £14,000 £2,000-3,000

Great Britain - *contd.*

1867-83 Watermark Large Anchor



8

x8 ☉

£5 orange on blued paper, BE, overprinted "SPECIMEN", unmounted mint; very fine and scarce thus. S.G. 133s, £3,000

£900-1,200



9

x9 ★

£5 orange on white paper, AC, large part original gum; fresh and fine. An attractive example of this popular high value. S.G. 137, £12,500

£4,000-6,000



10

x10 ★

1887-92 £1 green, LA, part original gum, fresh colour; a few short perfs. in places, fine appearance. S.G. 212, £3,500

£800-1,200

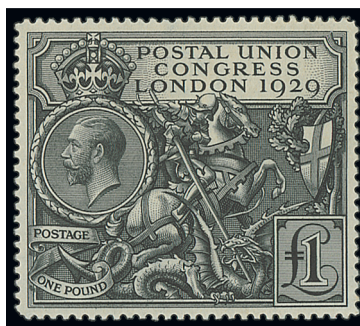


11



12

- x11 ★ 1912-24 1d. scarlet horizontal pair, the right-hand stamp variety 'Q' for 'o', [R.4/11] (Control T22), the left-hand stamp lightly mounted, the variety unmounted. S.G. 357ab, £450 £100-150
- x12 ★ 1913 Royal Cypher (Multiple) ½d. bright green and 1d. dull scarlet, unused (regummed), signed E. D(iena) at top of each. S.G. 397-398, £375 (for mounted) £80-120



13

- x13 ☼ 1929 P.U.C. £1 black, unmounted mint; slightly blunt corner at lower left, lightly toned gum with trivial marks on gum at foot; fresh appearance. S.G. 438, £1,100 £250-350

Officials



14



15

- x14 ☉ Board of Education: 1902 1/- green and carmine overprinted "SPECIMEN", part original gum; vertical crease at left and small diagonal crease at lower left, nevertheless good appearance. S.G. O82s, £3,000 £350-450
- x15 ★ Board of Education: 1902-04 2½d. ultramarine, well-centred and with large part original gum, fine and fresh. Rare. B.P.A. Certificate (2019). S.G. O85, £5,000 £1,500-2,000

BAHAMAS

- x16 ★ 1859-1934 mainly mint collection on album pages including 1859-60 1d. dull lake (2, both marginal), 1862 no watermark 1d. brown-lake, 1863 CC selection to 6d. violet, 1863 CC 1/- deep green, 1884-90 CA to £1 (no 5/-), 1902 CA set to 5/-, 1912-19 MCA set to £1, 1921-37 set to £1, 1930 set to 3/-, etc., chiefly fine £800-1,000



17

- x17 ★ 1865 CC perf. 12½ 1/- blue-green, part original gum; very minor spot to the back of the Queen's head. Scarce. S.G. 38, £2,750 £300-400

PROVENANCE:
H. R. Harmer, February 1972



18

- x18 ☒ 1911 (2 Oct.) O.H.M.S. envelope (obliterated in blue crayon) registered to London, bearing 1906-11 MCA 6d. bistre-brown strip of four and a pair, one variety **malformed** 'E', tied by 'NASSAU/BAHAMAS' c.d.s., 'R' in oval to face and other registration markings to reverse. S.G. 74, 74a, £700+ £200-250



19

- x19 ⊕ 1926 Script £1 green and black marginal example with plate number '1', fine unmounted mint, mounted in the margin only. S.G. 125, £180 £80-120

BAHRAIN



20

x20 ★

1938-41 set of sixteen to 25r., lightly mounted mint. S.G. 20-37, £1,000

£200-300

BARBADOS



21

x21 ★

1852-80 Britannia Issue mint selection on stockcards with perforation types, pairs, blocks of four, six and larger including 1852-55 deep blue block of four, unissued slate-blue blocks of six and eight, 1858 6d. pale rose-red pair with Certificate, 1861-70 ½d. blue-green imperforate pair, a fine array of shades and printings with plenty of values with duplication and an excellent basis for study and expansion. Cat. £45,000+

£6,000-8,000



22

x22 ★

1852-1957 mainly mint collection on album pages including 1852-55 (½d.) deep green to (4d.) brownish-red, unissued slate blue, 1858 6d. pale red and 1/- black, 1860 (½d.) green and (1d.) blue, 1861 with values to 1/-, 1875-81 CC to 1/- violet, 1882-86 CA set to 5/-, 1892-1903 set to 2/6d., 1912-16 set to 3/-, 1916-19 MCA set to 3/-, etc., most sets then complete to 1957 and in chiefly good to fine condition

£2,000-3,000

Barbados - *contd.*



23

24

25

- x23 ○ 1852-55 blued paper (½d.) yellow-green, good to large margins and cancelled by light strike of numeral oval, (4d.) brownish red, huge margins with parts of adjoining stamps showing at right and at foot, lightly used by indistinct numerical cancellation and 1873 Small Star 3d. brown-purple, used. S.G. 1, 5, 63 £1,085 £400-500
- x24 ★ 1852-55 prepared for use but not issued (no value) deep slate, good to large margins and large part original gum. S.G. 5b, £250 £100-120
- x25 ★ 1855-58 white paper, (½d.) yellow-green, large even margins and part original gum; a good example. S.G. 7, £500 £150-250



26

- x26 ★ 1861-70 1/- blue **error of colour**, bright and even colour; a few perforations repaired at right, nevertheless an attractive and fresh example of this popular rarity. Philatelic Foundation Certificate (1974). S.G. 34a, £18,000 £5,000-7,000
- Note: In 1863 the printers, Perkins, Bacon & Co., sent a supply of 50,000 to the island. On arrival it was discovered that they were printed in blue, the colour of the 1d., instead of black. A new supply was dispatched and the "Blue" error was not put on sale. Before disposing of these stamps, a number were removed and defaced with a cross in ink which has subsequently been cleaned. It is believed that only nine such errors exist.*



27

- x27 ○ 1878 "1d. " Type 3a on half 5/- dull rose **unsevered pair**, used with central crisp cancellation. Scarce. S.G. 86b, £2,500 £800-1,000

BECHUANALAND



Ex 28



29



30



31



32

- x28 ★ 1885-1910 mint selection comprising 1885-87 Cape of Good Hope CA ½d., Anchor ½d. and 1d., 1888 2d. on 2d. lilac and black, ½d. on 3d. pale reddish lilac and black, 1888 Protectorate 1d. on 1d. to 1/- on 1/-, 1888 4d. (in red) on 4d. lilac and black and 1910 Fiscal 6d. black and brown orange; all unused with part to large part original gum. S.G. 1, 4-5, 23, 29, 41-46, 51 and F1, £1,787 £400-500
- x29 ★ 1888 £1 lilac and black with large part original gum; small grey paper adhesion mark on reverse where the stamp was previously hinged, not affecting fine appearance. S.G. 20, £900 £200-300
- x30 ★ 1888 Protectorate 4d. on 4d. lilac and black, part original gum. Signed Sergio Sismondo and accompanied by his Certificate (2003). S.G. 44, £475 £150-200
- x31 ★ 1888 Protectorate 5/- green and black, well-centred with part original gum; tiny pink mark above the 'E' of 'FIVE', otherwise fine. Philatelic Foundation Certificate (1948). S.G. 49, £1,500 £500-700
- x32 ★ Postal Fiscal: 1910 6d. black and brown-orange, large part original gum. S.G. F1, £200 £80-120

BERMUDA



33



34



35

- x33 ★ 1874 "THREE PENCE" (Type 6) on 1/- green, part original gum; scarce. R.P.S. Certificate (2001). S.G. 13, £2,500 £600-700
- x34 ★ 1874 "THREE PENCE" (Type 6a) on 1/- green, unused without gum; fine. Signed Scheller. S.G. 13b, £2,000 £300-400
- x35 ★ 1874 "THREE PENCE" (Type 7) on 1/- green, part original gum; scarce. Signed Scheller and others. S.G. 14, £1,500 £400-500

Bermuda - *contd.*



Ex 36

x36 ★

1932-53 selection of mint Keyplates (36) with the the majority identified by the collector, comprising 1932 12/6d., 1938-53 2/- (7), 2/6d. (5, including line perf. 14), 5/- (7, including pale green and red on yellow), 10/- (6, including green and deep lake on yellow-green with Murray Payne Certificate), 12/6d. (4) and £1 (6); part to large part original gum; some with gum toning though a good group for the specialist

£1,500-2,000

Postal Fiscal



37

x37 ★

1937 Script 12/6d. grey and orange, large part original gum. Sergio Sismondo Certificate (2013). S.G. F1, £1,100

£500-600

BRITISH ANTARCTIC TERRITORY

x38 ⊕

1963- 96 unmounted mint collection including 1963-69 set of sixteen to £1, 1971 surcharge set to 50p. on 10/- and complete including miniature sheets thereafter; fine

£200-300

BRITISH COLUMBIA



39

x39 ⑨

1860 2½d. pale dull red imperforate plate proof from the left of the sheet, large even margins on the remaining three sides, unused without gum, very fresh appearance; rare in such fine condition. Philatelic Foundation Certificate (1958). Scott 1, €30,000; S.G. footnote after No.3, £10,000

£2,500-3,500

BRITISH GUIANA



40

x40 ○

1850-51 'Cotton Reel' 12c. blue, signed "J. B. S" (mith), cut square, design cut into at top, used with Demerara c.d.s., small thin visible through the reverse, otherwise a fine and sound example. Signed Pfenniger etc., S.G. 5, £11,000

£3,000-5,000



41



42

x41 ○

1852 Waterlow 1c. black on magenta, used with good to large margins and light Demerara cancellation; some light surface rubbing and a slight horizontal crease, neither of which affect the good appearance. B.P.A. Certificate (2016). S.G. 9, £5,500

£1,000-1,500

x42 ○

1852 Waterlow 1c. black on magenta, large margins and good colour; repainted heavy vertical crease at left though a presentable example of this popular rarity. Pascal Scheller Certificate (2018). S.G. 9, £5,500

£500-700



43

x43 ○

1856 4c. black on magenta initialled 'E. D. W' by the Post Clerk E. D. Wight, cut octagonal and cancelled by central strike of 'DEMERARA' datestamp for February 12th 1856. A very fine example of this rare stamp. Signed Calves, Champion, etc. S.G. 24, £25,000

£7,000-9,000

British Guiana - *contd.*



Ex 44

x44 ★

1888-89 Inland Revenue set of seventeen including 4c. with larger figure '4' and 6c. with '6' with flat top, part to large part original gum. \$4 with B.P.A. Certificate (1999). S.G. 175-189, £2,000+

£500-700

BRITISH LEVANT



Ex 45

x45 ★

1916 Salonica overprint ½d. to 1/- set of eight, large part original gum. S.G. S1-S8, £1,400

£250-350

BRITISH POST OFFICES IN SIAM



Ex 46

x46 ★

1882-85 unused group (12) comprising CC 5c. purple-brown, 6c. lilac and 24c. green and CA 2c. rose, 2c. brown, 4c. rose, 4c. pale brown, 5c. blue (toned), 6c. lilac, 8c. orange, 10c. slate and 12c. brown-purple, chiefly good examples; a few with minor faults such as short perfs. or no gum, the majority part to large part original gum. Cat. £5,000+

£800-1,200



Ex 47

48

x47 ★

1882-85 CC 5c. purple-brown and 24c. green, CA 2c. pale-rose, 4c. pale brown, 6c. lilac, 8c. orange, 10c. slate (horizontal bend) and 12c. brown-purple (vertical bend); all unused with part to large part original gum, a few with light toning. S.G. 4, 9, 15, 17, 19-22, £2,700

£400-500

x48 ○

1882-85 "TWO CENTS" on 32c. pale red, lightly cancelled in one corner, a few uneven perfs., nevertheless rare. S.G. 12, £3,250

£300-400

BRUNEI



Ex 49



Ex 50

- x49 ★ 1906 1c. to \$1 set of twelve, large part original gum; a few values with trimmed perfs., otherwise good examples. S.G. 11-22, £600 £150-250
- x50 ○ 1922 Malaya-Borneo Exhibition set of nine, the majority with variety **short 'r'**, used with generally clear datestamps. S.G. 51-59, £1,000+ £350-450

BURMA



Ex 51

- x51 ★ 1937 India overprint set of eighteen, lightly mounted mint. S.G. 1-18, £2,750 £600-800

CANADA



52



53

- x52 ③ 1851 12d. black imperforate plate proof on India paper, overprinted "SPECIMEN" vertically in carmine, mounted on card, fine and attractive. Unitrade 3Pi, \$2,500 £700-900
- x53 ○ 1852-57 7½d. yellow-green, four good even margins and with light target cancellation leaving most of the design clear, a fine example. Signed Calves. Unitrade 9, \$4,500; S.G. 12, £2,500 £800-1,200

Canada - *contd.*



54

x54 ★

1859 12½c. blue-green imperforate horizontal pair with good to large margins, no gum as issued, fine and scarce with only one-hundred stamps issued. Unitrade 18b, \$9,000; S.G. 41a, £7,000

£2,000-4,000



Ex 55

x55 ★

1897 Jubilee 2c., 3c., 6c., 10c., 15c., 20c., 50c., \$1, \$2, \$3 and \$5, all unused with part to large part original gum. S.G. 124-140 group, £5,000+

£1,000-1,200



56

x56 ★

1897 Jubilee \$1 lake, \$2 deep violet, \$3 bistre and \$5 olive-green, large part original gum. Vincent Green Certificate (2011) for the \$3. S.G. 136-138, 140, £4,450

£1,000-1,500



Ex 57

x57 ★田

1908 Quebec Tercentenary set of eight in blocks of four, unused without gum. S.G. 188-195, £2,200+

£500-700

CAPE OF GOOD HOPE



Ex 58

x58

1853-64 mint and used collection on album pages including 1853 1d. brown-red with Alex Rendon Certificate, 4d. blue and 4d. deep blue, 1855 1d. rose, 1d. deep rose-red, 4d. blue, 6d. deep rose-lilac with R.P.S. Certificate, 1/- bright yellow-green and 1/- deep dark green, 1861 Woodblocks (2) and later De La Rue printings (8) all unused, also a collection of used, several with certificates; a good range in predominately good to fine condition, high catalogue value

£2,000-4,000



59

x59 ○

1853 slightly blued paper 1d. brown-red pair with clear to large margins, attractive sharp outline and pronounced blueing, neatly cancelled with a single clear strike of the obliterator; fine. S.G. 3a, £750

£250-350



60

x60 ○

1855-63 1d. brick-red on cream toned paper, large margins with small amount of adjoining stamp visible at left, lightly cancelled by clear strike of Cape roller cancellation; fine and rare thus. R.P.S. Certificate (1984). S.G. 5, £900

£400-500

The Elusive 4d. Black Triangular



61

x61 ○

Perkins Bacon 4d. black, two good margins at foot and left, cutting into design slightly at right, light cancellation leaving the design clear, small surface abrasion at lower left corner which has been touched in very lightly, mentioned for strict accuracy only though barely affects the fine appearance of this elusive stamp of which there are only twelve examples known. An incredibly rare opportunity to acquire this great rarity . B.P.A. Certificate (1982). S.G. footnote after No. 8, £35,000

£10,000-20,000

Note: It was at one time, believed that these stamps came from a small supply printed in black to mark the death of the Prince Consort, but references to examples can be found in the philatelic press before news of the event reached Cape Town. It is now thought that these stamps represent proof sheets, possibly pressed into service during a shortage of stamps in 1861.

PROVENANCE:

Baron Stig Leuhusen

Rarities of the World, David Feldman, November 2009



62



63

- x62 ○ 1861 Woodblock 4d. pale milky blue, large margins and with light and clear cancellation. A fine and handsome example of this popular stamp. R.P.S. (1994) and Richter (1995) Certificates. S.G. 14, £2,250 £500-700

- x63 ★ 1863-64 1d. deep carmine-red pair with clear to good margins on two sides and huge margins on the remaining two sides, large part original gum. S.G. 18, £650 £200-300

Mafeking

1900 Scriffed Overprints



65



66

Ex 64

- x64 ○ Cape of Good Hope 1d. on ½d. green, 1d. on ½d. green, 3d. on 1d. carmine, 6d. on 3d. magenta and 1/- on 4d. sage-green, all but the 6d. used on individual small pieces and all tied or cancelled by 'MAFEKING/ C.G.H.' obliterations. S.G. 1-5, £1,000+ £350-450
- x65 ★ Bechuanaland Protectorate 6d. on 2d. green and carmine, unused with large part original gum; very fresh and fine appearance. Rare. Brandon Certificate (1985). S.G. 8, £3,000 £1,000-1,500
- PROVENANCE:
'Mafeking' Collection, Guido Craveri, February 1994
Corinphila, December 2019
- x66 ★ British Bechuanaland 1/- on 4d. green and purple-brown, unused with part original gum, a few lightly toned perfs. visible only from the reverse; fresh and fine appearance. B.P.A. Certificate (2019). S.G. 11, £1,600 £300-500

Cape of Good Hope, Mafeking, 1900 Serifed Overprints - *contd.*



67

x67 △

British Bechuanaland 1/- on 4d. green and purple-brown, variety **surcharge double** (**Types 1 and 2**), cancelled by 'MAFEKING/ C.G.H.' and tied to small piece. Rare and very fine with fewer than twenty examples known. B.P.A. Certificate (1993). S.G. 11ab, £8,000

£3,000-5,000

Note: This stamp and the variety were initially discussed by H. R. Holmes in the London Philatelist (Vol. 81, April 1972, No. 952), the variety is thought to be a result of trial surcharges; a copy of the article accompanies this lot.

PROVENANCE:

'Goodyear', Christie's Robson Lowe, June 1993

1900 Sans-Serif Overprints



68

x68 ★

Bechuanaland Protectorate 1/- on 6d. purple on rose-red, fresh and fine appearance, large part original gum; an attractive example of this very rare stamp. Signed Bloch. Brandon (1982) and B.P.A. (2019) Certificates. S.G. 14, £7,500

£3,000-4,000

PROVENANCE:

'Mafeking', Guido Craveri, February 1994

Produced Photographically



69

x69 △

3d. pale blue on blue, narrow setting, a fine used example tied to small piece by complete strike of 'MAFEKING/C.G.H.' datestamp. S.G. 19, £500

£200-300

CAYMAN ISLANDS

x70 ★

A mint collection on stock leaves with 1902-03 set to 1/-, 1905 1/- (2), 1907 values to 5/- (2) plus Specimen values to 5/-, 1912-20 values to 10/- (2 shades) including 1/- blocks of four (2), 1921-26 10/-, 1932 Tercentenary set to 10/- with additional 5/- and 10/-, 1935 set to 10/-, K.G.VI and Q.E. to 1969; generally clean and attractive, lightly mounted or unmounted mint

£600-800



71

x71 △

1917 War Stamp 1½d. Type 16 on 2½d. deep blue, used on small piece with light part Georgetown c.d.s.; a rare stamp, particularly so used. B.P.A. Certificate (1989). S.G. 55, £2,000

£700-900

CEYLON

72



73



74

x72 ○

1859 4d. dull rose, deep fresh colour and with margins on all four sides, close on one side and large elsewhere, cancelled by oval of bars; fine and attractive. R.P.S. (1917) and B.P.A. (2001) Certificates. S.G. 4, £4,500

£800-1,200

x73 ★

1862 smooth paper 5d. lake-brown, unused with part original gum, top left corner repaired and a few perforations added at foot, still a presentable example of this difficult stamp. R.P.S. Certificate (2015). S.G. 40, £1,800

£300-400

x74 ★

1863-66 perf. 11½, 12, CC (23mm. high) 1d. deep blue, unused without gum, a very fresh and fine example of this incredibly rare and difficult stamp of which only three unused examples are recorded in private hands. R.P.S. Certificate (2013). S.G. 45, £3,500

£1,000-1,500

PROVENANCE:

A. C. Edwards, Spink. October 2016



75

x75 ★

1912 MCA 50r. dull purple, large part original gum; a fine example. S.G. 320, £650

£250-350

Ceylon - *contd.*

Official Stamps



Ex 76

x76 ★

1869 2d. yellow, 6d. deep brown, 8d. chocolate, 1/- pale lilac and 2/- deep blue with Type I overprint and 1d. blue and 3d. carmine-rose with Type 2 overprint; all unused and with small part to large part original gum. S.G. O1-O7, £740

£250-350

CYPRUS



Ex 77

x77 ★

1880-1979 mint collection housed in a Lighthouse album and including 1880 6d. grey and 1/- green, 1881 ½d. Type 3 surcharge Plate 215 (2), 1882 CC '½' on ½pi. emerald-green, 1892-94 set of seven to 12pi., 1894-96 set of ten to 45pi., 1902 CA and 1904 MCA sets to 45pi., 1912-15 MCA set to 45pi., 1924-28 set including £5 black on yellow (fine lightly mounted mint), largely complete with sets and miniature sheets to 1979; chiefly good to fine, Cat. £13,000+

£3,000-4,000



Ex 78

x78 ★

1880-1951 mainly mint collection on album pages including 1894-96 CA set to 45pi., 1902-04 CA set to 45pi., 1912-15 MCA set to 45pi., 1921-23 Script set to 45pi., 1923 MCA 10/- green and red on yellow and £1 purple and black on red, 1924-28 with MCA £1 and Script set to £5 black on yellow, 1928 set to £1, 1934 set to 45pi., 1938-51 set to £1, etc., a lovely fresh collection in fine condition

£1,500-2,500

x79 ★

1880-1960 mint collection on album pages including 1880 ½d. rose and 4d. sage-green, 1881 ½d. on 1d. red (2), 1894-96 CA set to 45pi., 1904 MCA set to 45pi., 1912 MCA set to 45pi., 1921 Script set to 45pi., 1924-28 MCA to £1 black and red, 1928 set to £1, 1938-51 set to £1, 1948 Wedding, 1955 and 1960 sets to £1; generally fine and fresh

£700-900

1880-1881 Overprints on Great Britain



80



81



82



83

- x80 ★ 田 1d. red, Plate 196, IH-II, JH-JI block of four with large part original gum; a fine and attractive multiple. S.G. 2, £2,800+ £1,000-1,500
- x81 ★ 6d. grey, AD, unused with part original gum; a few shortish perfs. at top, otherwise fine. S.G. 5, £500 £150-200
- x82 ○ 田 6d. grey block of six, GB-GC/IB-IC, lightly cancelled by oval obliterators; light diagonal crease affecting HB only. A rare and attractive multiple. S.G. 5, £3,900+ £1,300-1,600
- x83 ★ 1/- green, SI, unused with large part original gum. S.G. 6, £850 £250-350



84

- x84 ○ 田 1/2d. on 1d. red Plate 217, horizontal strip of five LH-LL, used on the first day of issue (1 June 1881) and tied to small piece by three strikes of Larnaca c.d.s. for this date; fresh colour and crisp cancellations. S.G. 9, £550+ £200-300

Cyprus - *contd.*



85



86



87

- x85 ★ ½d. on 1d. red Plate 215, OC, variety **surcharge treble**, unused with part original gum, a good example of this striking error. S.G. 9ba, £800 £300-400
- x86 ★ ½d. on 1d. red Plate 215, NL, variety **surcharge treble**, unused with part original gum, some offset surcharge on the reverse; a fine and striking error. S.G. 9ba, £800 £300-400
- x87 ★ 30pa. on 1d. red Plate 216, KI, variety **surcharge double, one inverted**, unused as are all known examples; poorly repaired tear at upper right, still a presentable space-filler example of this great rarity. S.G. 10a, £7,500 £800-1,200



89



90



91

Ex 88

- x88 ★ 1881 CC ½pi. emerald-green to 6pi. olive-grey set of five, large part original gum; 2pi. and 6pi. each with a few short perfs., otherwise sound. S.G. 11-15, £3,755 £800-1,200
- x89 ★ 1882 CA ½pi. emerald-green, an unused example in a vivid shade; two small ink mark on reverse and a pressed gum crease neither of which affect the fine appearance of this rare stamp. B.P.A. Certificate (2019). S.G. 16, £5,000 £800-1,200
- x90 ★ 1882 CC 30pa. on 1pi. rose, unused with part original gum; light soil mark at top, otherwise fine. S.G. 24, £1,600 £400-500
- x91 ★ 1882 CA ½' on ½pi. emerald green, unused with large part original gum. S.G. 27, £300 £80-120



92



93

- x92 1923 MCA 10/- green and red on pale yellow, an unmounted mint example from the top of the sheet with plate number '1' and a used example tied to small piece by Larnaca July 1924 c.d.s., a fine pair. S.G. 100, £1,300 £350-450
- x93 ★ 1923 MCA £1 purple and black on red, unused with plate number '1' from the top of the sheet, large part original gum and 1924 MCA £1 purple and black on red, unmounted mint from the foot of the sheet with plate number '1'. S.G. 101-102, £1,700 £600-800



94



95



96

- x94 田 1923 MCA £1 purple and black on red block of four from the top of the sheet with interpanneau margin at right, unmounted mint; pressed crease affecting the vertical pair at left, nevertheless a striking and rare multiple. S.G. 101, £5,600+ £2,000-3,000
- x95 △ 1924 MCA £1 purple and black on red, tied to small piece by part datestamp. S.G. 102, £850 £200-300
- x96 △ 1924 MCA £1 purple and black on red horizontal pair from the top right of the sheet with plate number '1' and sheet number '191', tied on small piece by 'REGISTERED/NICOSIA, CYPRUS' oval datestamp; fine and attractive. S.G. 102, £1,700+ £500-600

1928 £5 Black on Yellow



97



98



99

- x97 ⑤ A plate number '1' example from the top of the sheet overprinted "SPECIMEN", part original gum. S.G. 117as, £1,000 £500-600
- x98 ⑤ A fresh and fine example overprinted "SPECIMEN", large part original gum. S.G. 117as, £1,000 £400-500
- x99 ④ Marginal from the top of the sheet, the stamp unmounted mint and mounted lightly in the margin only; a fine example. Brandon (1989) and Richter (1992) Certificates. S.G. 117a, £3,750 £1,000-1,500

Cyprus, 1928 £5 Black on Yellow - *contd.*



100

x100 田

Block of four well-centred and unmounted mint; tiny inclusion on reverse of upper left stamp mentioned strictly for accuracy. A very fine and striking multiple of this perennially popular high value and exceptionally as a block of four with very few known. S.G. 117a, £15,000+

£10,000-15,000



101

x101 △

A used example tied to small piece by 'REGISTERED/ 22 JUL 37/ NICOSIA, CYPRUS' oval datestamp; fine and scarce. S.G. 117a, £8,000

£2,500-3,500

CYRENAICA



Ex 102

x102 ★

1950 1m. brown to 500m. orange-yellow and green set of thirteen, five complete sets, two lightly mounted and the remaining three sets unmounted mint. S.G. 136-148, £1,000

£200-300

FALKLAND ISLANDS



Ex 103

x103 ★

1878-1935 mint collection on Scott album pages including 1878-79 no watermark set to 1/- (4d. used), 1882 1d. and 4d., 1885-91 1d., 1889 4d., 1891 ½d. on half of 1d. brownish-claret, 1891-1902 CA set to 1/-, 1898 2/6d. and 5/-, 1904 set to 5/-, 1912-20 MCA set to £1, 1921-28 Script set to 3/-, 1928 South Georgia Provisional 2½d. on 2d. purple brown, 1929-37 set to £1, 1933 Centenary set to £1 and 1935 Silver Jubilee; chiefly fine and fresh. Cat. £12,000+

£4,000-6,000

Falkland Islands - *contd.*



Ex 104

x104 ○

1878-1950 used collection on Lighthouse album pages including 1878 no watermark set to 1/-, 1891 ½d. on half 1d. (2), 1891-1902 CA to 1/-, 1898 CC 2/6d. and 5/-, 1904 MCA set to 5/-, 1912-20 MCA to 10/- (2), 1921-28 Script to 3/-, 1929-37 set to £1, 1933 Centenary set to £1, 1938-50 set to £1, etc., chiefly good to fine with clear cancellations

£2,000-4,000



105



106



107

x105 ○

1891 ½d. on half of red-brown, a used **unsevered pair**, cancelled by part double-ring datestamp; straight edge at right, otherwise fine. S.G. 14a, £1,600

£400-500

x106 ★

1898 CC 5/- red horizontal pair, large part original gum; pressed crease and small inclusion on reverse of left adhesive. S.G. 42, £500+

£150-200

x107 ★

1938-50 5/- indigo and pale yellow-brown, a lightly mounted mint example of this rare shade. S.G. 161b, £1,100

£200-300

FIJI

x108 ☉

1912-69 mint selection on stockpages including 1912-23 £1 purple and black on red Die II, 1938-55 set to £1 including perf. varieties, 1954-59 set to £1, 1959-63 set to £1, etc.; chiefly fine and the majority unmounted mint

£300-400



109

x109 ★

1915 War Stamp ½d. green variety **overprint inverted**, very well-centred, large part original gum. S.G. 138c, £550

£200-250

GIBRALTAR

- x110 © 1886-87 CA ½d. to 1/- set of seven, each overprinted “SPECIMEN”, part to large part original gum; a few uneven perfs. otherwise fine. S.G. 8s-14s, £500 £150-200
- x111 ★ 1886-87 CA ½d. to 1/- set of seven, large part original gum; fine. S.G. 8-14, £600 £200-250



- x112 ★ 1889 Spanish Currency 5c. on ½d. to 75c. on 1/- sets of seven (2), one overprinted “SPECIMEN” and one as issued; all large part original gum. S.G. 15s-21s, 15-21, £575 £200-250

SPINK LIVE

Spink Live is now running on a new and improved bidding platform
 Accessible online through www.spink.com and also available iOS and Android devices

Bidding on 'Spink Live' remains free of charge

MY ACCOUNT

- Login
- Consign An Item
- Watched Lots
- My Bids

- ☒ Medals
- ☒ Stamps
- ☐ Watches
- ☒ Whiskies & Spirits
- ☒ Wines

Lot 3: SEAL, 5 songs, including all US\$7,000

Lot 4: RANDY CRAWFORD & JOE SAMPLE, 4 US\$7,000

LOT 2010 - CURRENT B

Slide to bid €

CURRENT HISTORY

Click to Login / Register

Tick your Interests

Scroll the Lots

Slide to Bid

Download on the App Store

GET IT ON Google Play

For any enquiries or further assistance please contact:
 Tel: +44 (0)20 7563 4112 | Email: spinklive@spink.com

SPINK

WHERE HISTORY IS VALUED

29

Gibraltar - *contd.*

1889-96 10c. Carmine with Value Omitted

A Hugely Important Multiple



113

x113 ★田

The unique block of four from the right of the sheet; incredibly fresh and fine, very lightly hinged on the upper horizontal pair leaving the lower pair unmounted. A unique opportunity to acquire this very famous and spectacular multiple of the highest exhibition quality. S.G. 23b, £28,000+

£12,000-18,000

PROVENANCE:

Geoffrey Duveen, Robson Lowe, Basel VI, October 1976



Ex 114

- x114 © 1903 CA ½d. to £1 set of ten, each overprinted “SPECIMEN”; 2/- with small corner crease otherwise fine. S.G. 46s-55s, £550 £150-200



Ex 115

- x115 © 1921-27 Script ½d. to 8/- set of eleven, each overprinted “SPECIMEN”, large part original gum. S.G. 89s-101s, £600 £200-250



Ex 116

117

- x116 © 1925 Script 1/- to £5 set of seven, perforated or overprinted “SPECIMEN”, large part original gum; fine. S.G. 102s-108s, £1,300 £400-500

- x117 ★ 1925 Script £5 violet and black, very lightly mounted mint; signed on reverse, a fine example of this popular high value. S.G. 108, £1,600 £500-600

GOLD COAST



Ex 118

- x118 ★ 1875 CC 1d. blue, 4d. magenta and 6d. orange; a few uneven perfs. as often found, otherwise fine and large part original gum. S.G. 1-3, £1,775 £600-800



119

- x119 ★ 1889-94 CA 20/- green and red and 20/- dull mauve and black on red, both with large part original gum, a few uneven perfs. in places, otherwise fine. S.G. 24 and 25, £3,670 £1,200-1,600
- x120 ★ 1913-54 mint collection on stockpages including 1913-21 MCA set to £1 including Dies and shades, 1921-24 Script set to 15/- (both Dies), 1928 set to 5/-, 1938 and 1948 sets to 10/- and 1952-54 set; chiefly fine £500-700

GRENADA

- x121 ★ 1861-1929 mainly mint collection including 1861 first issues mint and used, subsequent Chalon head issues mint and used with values to 1/- and including 1883 bisect used, shades, multiples, etc., 1875-81 'POSTAGE' surcharges to 1/-, 1883 CA set to 1/-, 1886-1891 surcharges, 1895-99 set to 1/-, 1902 CA set to 10/-, 1904-06 MCA set to 5/-, 1913 MCA set to 10/- and 1921-29 Script set to 10/-; chiefly good to fine £600-700

HONG KONG



Ex 122

123

- x122 ★ 1862 no watermark 18c., 1863-71 CC 12c. blue (3, shades), 30c. orange-vermilion, 30c. mauve and 96c. brownish grey (trimmed perfs.), 1880 5c. on 18c. lilac and 10c. on 12c. pale blue, 1880 CC 2c. dull rose, 5c. blue and 10c. mauve, unused, the majority with no gum; mixed condition. Cat. £7,000+ £800-1,200
- x123 ★ 1863-71 CC 48c. rose-carmine, fresh colour and large part original gum. S.G. 17a, £950 £300-350



Ex 124

x124 ★

1903-62 mint collection in a small stockbook including 1903 CA set of fifteen to \$10 (marginal from the top of the sheet but with slight toning in places), 1904-06 MCA set of twenty-three including chalk surfaced papers, 1907-11 MCA colours changed set of nine, 1912-21 MCA set to \$10 including shades and printings (33), 1921-27 Script set to \$3, 1938-52 set of forty-one to \$10 including \$10 green and violet and most other listed shades, 1949 Silver Wedding and 1954-62 set to \$10, all unused and most with large part original gum; a few with minor faults such as no gum or slight surface rubbing. Cat. £15,000+

£4,000-6,000



125

x125 ★

1973 \$10 printed on **glazed paper**, lightly mounted mint; a slight horizontal gum bend at top. Rare. S.G. 209d, £2,250

£400-500

INDIA



126

x126 ★

1856-64 2a. yellow-green prepared for use, but not officially issued, unused with part original gum, a fresh and fine unused example of this rare stamp. R.P.S. Certificate (2017). S.G. 50, £3,750

£1,000-1,500

India - *contd.*



Ex 127

x127 田

1931 Inauguration of New Delhi, mint group comprising ¼a. to 1r. the issued set of six, the issued set in marginal unmounted mint blocks of four and the complete booklet. S.G. 226-231, £575

£200-300



Ex 128

x128 ★

1937-40 3p. to 25r. set of eighteen, lightly mounted mint, a few values unmounted. S.G. 247-264, £600

£150-200

JAMAICA



129

x129 ★

1938 5/- slate-blue and yellow-orange, showing **emergency use of a line perforation machine giving an irregular gauge of 14-14.15**, a lightly mounted mint example from the foot of the sheet with plate number '1' and small part of imprint at right; a very fine and fresh example of this scarce war-time printing. S.G. 132a, £7,000

£2,000-3,000

KENYA, UGANDA AND TANGANYIKA

British East Africa



Ex 130

x130 ★

1890-95 set of fifteen to 5r. grey-green, 1894 5a. on 8a. blue and 7½a. on 1r. carmine and 1895 2½a. on 4½a. dull violet (vertical crease); small part to part original gum. S.G. 4-9, 11-19, 27-28 and 48, £950

£200-300



Ex 131

x131 ★

1895 ½a. to 5r. set of fifteen, unused or with small part original gum, a few values with straight edges on one side and ½a. and 5r. with pressed creases, still a scarce set. R.P.S. Certificate (1938) for 1a. S.G. 33-47, £2,750

£600-800



132



133



x132 ○

1897 CC 5r. deep sepia, well-centred and lightly cancelled by two part datestamps. S.G. 96, £550

£150-200

x133 ★

1903-04 C 10r. grey and ultramarine, 1904-07 MCA 10r. grey and ultramarine and 20r. grey and stone, unused with large part original gum; a little surface rubbing in places, otherwise good examples. S.G. 14, 31-32, £1,675

£400-600

Kenya, Uganda and Tanganyika - *contd.*



134

- x134 ★ 1903-04 CC 20r. grey and stone, lightly mounted mint; a fine example. S.G. 15, £850 £250-300
- PROVENANCE:
Lord Vestey, January 2015



Ex 135

- x135 ★ 1903-61 mint collection on album pages including 1903 CA set to 10r., 1904 MCA set to 10r., 1907-08 set to 75c., 1912-21 MCA set to 20r. (a few low values used), 1921 Script set to 5r., 1922-27 Script set to £1 (£1 also used), 1935-37 Script set to £1, 1938-54 set to £1, 1954-59 set to £1, 1960-62 set to 20/-, 1928 and 1935 Postage Due sets, chiefly good to fine; a few minor faults in places such as light toning or gum bends. Cat. £5,800+ £1,500-2,500



136



137

- x136 ★ 1904-07 MCA 50r. grey and red-brown, large part original gum; a fine example. Sergio Sismondo Certificate (2015). S.G. 33, £2,750 £850-950
- x137 ★ 1912-21 20r. purple and blue on blue, large part original gum, fine. S.G. 60, £550 £200-250

1922-27 Watermark Multiple Script CA, Specimen Stamps



138



139



140



141

- x138 ⑤ £2 green and purple, overprinted “SPECIMEN”, fresh mint. S.G. 96s, £400 £150-200
- x139 ⑤ £4 black and magenta, overprinted “SPECIMEN”, well-centred and with fresh colours; a fine example. S.G. 98s, £600 £250-300
- x140 ⑤ £5 black and blue, overprinted “SPECIMEN”, well-centred and with large part original gum. S.G. 99s, £700 £300-400
- x141 ⑤ £20 red and green, overprinted “SPECIMEN”, well-centred and fresh appearance, large part original gum; very fine. S.G. 101s, £1,700 £800-1,200

1922-27 Watermark Multiple Script CA, Issued Stamps



142



143



144



145

- x142 ★ £2 green and purple, a well-centred and fresh example; light offset marks on reverse, large part original gum. Signed A.D(iena). S.G. 96, £1,200 £500-600
- x143 ⊕ £3 purple and yellow, unmounted mint; a fine and fresh example. Signed E. D(iena) and accompanied by his Certificate (1980). S.G. 97, £1,800 £700-900
- x144 ★ £4 black and magenta, lightly mounted mint; fresh and fine appearance. Signed E. D(iena) and accompanied by his Certificate (1985). S.G. 98, £3,000 £1,000-1,500
- x145 ★ £5 black and blue, well-centred and fresh appearance, large part original gum; very light diagonal crease, otherwise fine. Brandon Certificate (2015). S.G. 99, £3,250 £1,000-1,500

Kenya, Uganda and Tanganyika, 1922-27 Watermark Multiple Script CA, Issued Stamps - *contd.*

A Major East African Rarity



146

x146 ★

£25 black and red, lightly mounted mint. A very fresh and fine example of this rare high value. Signed Peter Holcombe and accompanied by his Certificate (1986). S.G. 102, £38,000

£20,000-30,000

PROVENANCE:

Lord Vestey, January 2015

x147 ★

1935-54 mint group comprising 1935-37 Script set to £1, some multiples to 1/- including 30c. block of eight, 65c. corner block of four with sheet number, 1/- block of four, etc., also a page with 1935 and 1938 minor varieties (8); a useful group

£200-300



Ex 148

x148 ★

1938-54 specialised mint group with most identified by the collector in the Murray Payne Specialised Catalogue with 1c. (4), 5c. (3), 10c. (5), 15c. (3), 20c. (4), 25c., 30c. (6), 40c., 50c. (6), 1/- (3), 2/- (3), 3/- (3), 5/- (3), 10/- (6) and £1 (4) including the more scarce perforations with 5/- and 10/- perf. 13¼ and £1 perf. 11¾ x 13; a useful group for the specialist, chiefly fine and lightly mounted or unmounted mint. S.G. 131-150 group

£800-1,200

LABUAN



Ex 149

x149 ☉

1885-1907 miscellaneous selection overprinted or perforated "SPECIMEN" including 1885 10c. and 16c., 1894 set, 1896 Jubilee sets (2), 1897-1901 set and 1899 "4 CENTS" set, also Brunei 1907 \$1, North Borneo with 1899 "4 CENTS" set and unissued trio, etc., some without gum though largely mint; a few minor fault in places though generally fine. Cat. £1,500+

£150-250



Ex 150

151

x150

1902 25c. green and greenish blue mint, variety **line through 'B'**, 25c. **error of colour** black and greenish blue, cancelled-to-order and 1901 Postage Due set of nine unused with large part original gum. S.G. 126c, 126b and D1-D9, £1,200

£300-400

x151 ○

1902 25c. **error of colour** black and greenish blue, cancelled-to-order as are all examples, fine. S.G. 126b, £600

£120-160

LAGOS



Ex 152

x152 ★

1874-1906 largely mint group (56) on two album pages including 1874-75 set (3d. to 1/- used), 1876-79 set (3d., 4d. and 1/- used), 1882 4d., 1884-86 2d. and 2/6d. (used), 1887-1902 values to 10/-, 1904 set to 5/- and 1904-06 set to 10/-; good to fine

£400-500

MALAYA

x153 ★

1882-1960, a predominately mint selection arranged in an album and on stockcards with most states including Kedah 1912 1c. to \$5, 1921-32 \$3, \$5 **watermark crown to left of CA**, 1937 10c. to \$5 (no \$2), Malacca 1949-52 1c. to \$5, Negri Sembilan 1935-41 1c. to \$5, Penang 1949 1c. to \$5, Perak 1935-37 1c. to \$5, Official 1889 8c. **wide space between "G" and "S"**, Selangor 1935-41 1c. to \$5, Sungei Ujong 1882 "S U" overprint 2c. with stops, 1883-84 2c. brown triplet showing Types 12+19 - 16+19 - 12+20; also mint British Post Office in Siam 1882-85 6c., Brunei with 1947-51 1c. to \$10, Hong Kong and Sarawak. Generally good to fine. (hundreds)

£1,000-1,500



Ex 154

x154 ★

1884-1948 mint collection on pre-printed album pages including Federated Malay States 1900 set to \$2, 1900-01 set to \$5, 1904-22 set to \$5, 1922-34 Script set to \$5 (both), 1945-48 BMA set to \$5, Postage Dues, Johore with 2c. rose overprints (8) and 2c. on 24c. (4), later sets to \$50, Kedah with 1912 set to \$5, 1921-32 set to \$5, 1937 set to \$5, Kelantan with 1922 Malaya-Borneo set, 1937 set to \$5, Malacca with sets to \$5, Negri Sembilan, Pahang, Perak with Straits overprints and surcharges and all later sets to \$5, Perlis with sets to \$5, Selangor with Straits overprints (various types, some with Sismondo Certs.), Sungei Ujong with overprints on 2c. rose and 2c. brown (various types) and Trengganu with values to \$5; a huge range in chiefly good to fine condition, a few minor faults including a few tone spots. High catalogue value

£6,000-8,000



Ex 155

x155 ★

1935-55 mint selection on a Hagner page with Johore with 1949-55 Script set to \$5 including all shades, Perak with 1935-37 Script set to \$5 perforated "SPECIMEN" and the issued set, 1938-41 Script set to \$5 and Trengganu with 1910-19 MCA set to \$5; chiefly good to fine. Cat. £2,650+

£700-900



Ex 156

x156 ★

A mint group on Hagner pages including Straits Settlements 1937-41 Script set to \$5, BMA 1945-48 set to \$5, Johore 1904-10 \$100 (toned), 1922-41 Script part set including \$100 green and scarlet, Kelantan 1937-40 \$2, Pahang 1935-41 set to \$5, Perak 1935-37 Script \$5, 1938-41 Script set to \$5, etc., a nice group in chiefly good to fine condition

£700-900



The Royal Philatelic Society London

We are pleased to receive proposals for membership of the Society which is through election.

If you are interested in membership, please contact us at secretary@rpsl.org.uk

If you have no proposer or seconder, please contact us for further information.

Tel: 00 44 (0)20 7486 1044 | www.rpsl.org.uk

The world's oldest and most prestigious philatelic society, established 1869, with over 2,000 members in more than 70 countries.

Extensive premises in London's West End house the Society's superlative library, plus Museum and Archive, and provide first-class meeting facilities.

The Society's Online Catalogue provides access to over three-quarters of a million philatelic indexes to members world-wide.

A fascinating programme of displays and meetings throughout the year, supplemented by regional meetings and gatherings at major international events.

The Society publishes ten times a year its own journal, *The London Philatelist*, containing articles of outstanding philatelic research, in addition to publishing major philatelic works.

We are honoured to have Her Majesty Queen Elizabeth II as our Royal Patron

Malaya - *contd.*

Straits Settlements



Ex 157

x157

1867-1937 mint and used collection on album pages including 1867-72 CC to 96c. used, 1883 surcharges mint and used, 1883-91 CA set to 96c. mint and used, 1892-99 to \$5 mint (2) and used, 1902 CA to \$5 mint and with \$100 overprinted 'SPECIMEN', 1904-10 MCA to \$5 mint and used and \$25 overprinted 'SPECIMEN', 1906-07 Labuan overprint set to \$1 mint (2), 1906-12 MCA to \$5 mint and used and with \$25 and \$500 overprinted 'SPECIMEN' (\$500 with B.P.A. Certificate), 1912-23 MCA \$5 and \$25 mint and \$100 and \$500 overprinted 'SPECIMEN', 1921-33 Script set to \$25 mint and used and with \$100 and \$500 overprinted 'SPECIMEN', 1922 Malaya-Borneo set to \$5 (2) mint, 1936 set to \$5 etc., a largely complete collection, a little toning in places though condition generally good to fine and with huge catalogue value

£6,000-8,000



Ex 158

159

x158 ○

1867 1½a. on ½a., 2c. on 1a., 3c. on 1a., 4c. on 1a., 6c. on 2a., 8c. on 2a., 12c. on 4a., 24c. on 8a. and 32c. on 2a., all used, the 12c. a little soiled, the others generally fine. S.G. 1-9, £1,500+

£300-400

x159 ©

1903 CA \$100 purple and green on yellow, overprinted "SPECIMEN"; damaged perf. at foot and tiny thin, still a presentable example. S.G. 122s, £750

£150-200



Ex 160

x160 ★

1904-10 MCA mint set on a pre-printed album page to \$5 and including various printings, shades, watermark inverted varieties (26) with 1c. **watermark inverted**, 4c. **watermark inverted**, \$1 (2) and \$5 (2); chiefly good to fine. Cat. £1,700+

£400-500



161



162

x161 ★

1906-12 MCA \$25 purple and blue on blue, fine lightly mounted mint. Rare. S.G. 168, £3,750

£1,200-1,600

x162 ☉

1906-12 MCA \$500 purple and orange, overprinted "SPECIMEN", large part original gum. Rare. S.G. 169s, £4,750

£1,300-1,600

x163 ○

1912-33 used selection on album pages including 1912-23 MCA set to \$5 (5, including on olive and emerald backs), 1921-33 Script set including \$5 and \$25 (3), all good to fine. Cat. £1,500+

£200-300



164



165



166

x164 ★

1912-23 MCA \$25 purple and blue on blue, plate number '1' example from the left of the sheet, lightly mounted mint; few minor tone spots on reverse, otherwise a good example of this scarce high value. S.G. 213, £3,250

£500-600

x165 ☉

1912-23 MCA \$100 black and carmine on blue, overprinted "SPECIMEN", well-centred and with large part original lightly toned gum. S.G. 214s, £1,500

£400-600

x166 ☉

1912-23 MCA \$500 purple and orange-brown, overprinted "SPECIMEN", large part original gum; very faint line to left of crown, otherwise fine and rare. S.G. 215s, £5,500

£1,000-1,500

Malaya, Straits Settlements - *contd.*



167



168



169

- x167 ★ 1921-33 Script \$25 purple and blue on blue, large part original gum; fine. S.G. 240b, £1,400 £500-700
- x168 © 1921-33 Script \$500 purple and orange-brown, overprinted "SPECIMEN", a particularly fresh and fine example, lightly mounted mint. Rare. S.G. 240ds, £5,000 £2,000-3,000
- x169 ★ **Postal Fiscal:** 1938 \$25 purple and blue on blue, inscribed 'REVENUE/REVENUE', slightly browned gum as usually found, fresh and fine appearance. S.G. F1, £1,400 £400-600



170



171



172



173

British Military Administration

- x170 ★ 8c. grey overprinted 'BMA', prepared but not officially issued, unused with large part original gum. S.G. footnote after No. 18, £550 £150-250

Federated Malay States

- x171 ★ 1928 Script \$25 green and orange, well-centred and lightly mounted mint, a fine example of this popular high value. S.G. 82, £2,250 £500-600

Negri Sembilan

- x172 ★ 1935-41 Script prepared but unissued 8c. scarlet, unused without gum, colour a little suffused and small surface fault at lower left corner. Believed to be one of only two known examples of this stamp without Japanese occupation overprint, formerly part of a horizontal pair. S.G. Footnote below No. 39 £1,000-2,000

Perak

- x173 ★ 1883 2c. Type 12 on 4c. rose, part original gum; light vertical bend at foot, otherwise fine and rare. Brandon Certificate (1991). S.G. 14, £4,500 £2,000-3,000

Selangor



174



175

- x174 ○ 1881-82 CC 2c. brown Type 4, used with clear 'S over Crescent Moon and Star' circular cancellation in red; slightly thinned at top, nevertheless a presentable example of this very rare stamp. R.P.S. Certificate (1991). S.G. 4, £3,750 £800-1,200
- x175 ★ 1897 CC \$25 green and orange, well-centred and with large part original gum; fine and scarce. S.G. 66, £5,000 £1,500-2,000

Trengganu



176



177

- x176 ★ 1912 MCA \$25 rose-carmin and green, well centred, large part original gum; fine and fresh. S.G. 18, £1,700 £600-800
- x177 ★ 1921 Script \$100 green and scarlet, well-centred and fresh colours, part original gum; a few lightly toned perfs. at right only visible on the reverse, a good example of this rare high value. S.G. 47, £9,500 £1,000-2,000

MAURITIUS



Ex 178

- x178 1848-1926 mint and used collection on album pages including 1848-59 Post Paid worn impression 1d. (2) and 2d., 1859 Lapirot 2d. (2), 1859 Dardenne 1d. and 2d. (2), all used, a range of Britannia issues to 1/- mint and used, 1863-72 CC to 5/- mint, 1878 Surcharge set to 2r.50c. mint, 1879 set to 2r.50c. mint, later Surcharges, 1900-05 to 1r. mint, 1902 Postage & Revenue overprint set mint, etc.; condition a little mixed on the earlier issues though chiefly good to fine £700-900

Mauritius - contd.



Ex 179

x179 ○

1848-1973 used collection on album pages including 1848-49 Post Paid intermediate impression 2d. light blue (B.P.A. Cert. which states it has been repaired), worn impression 1d. red and 2d. blue, latest impression 2d. blue, a range of Britannia issues to 1/-, 1859 Lapirot 2d. blue, 1860-63 set to 1/- buff, 1863-72 CC to 5/-, 1878 Surcharge set to 2r.50c., most later part and full sets and much duplication; a good and useful range

£1,000-1,500

1848-49 Post Paid Issue



180



181



182

x180 ○

1d. orange-vermilion on yellowish paper, earliest impression, three good margins and just cut-into at upper left, cancelled by clear numeral '1' of Mahèbourg obliteration; a good example of this rarity. S.G. 3, £18,000

£2,000-4,000

x181 ○

1d. orange-vermilion, early impression, large margins all round and with very vivid colour, neatly cancelled by numeral '2' of Flacq; a fine example of this rare stamp. B.P.A. Certificate (2014). S.G. 7, £7,000

£2,000-4,000

x182 ○

1d. bright vermilion, intermediate impression on bluish grey paper, large margins and vivid colour, light numeral '1' cancellation, a good example. S.G. 10, £3,000

£1,000-1,500



183



184



185

x183 ○

1d. dull vermilion on greyish paper, intermediate impression, four large even margins and neat target cancellation; a good slightly oxidised example. Alberto Diena Certificate (1970). S.G. 11, £3,000

£800-1,200

x184 ○

2d. deep blue, intermediate impression, generally good to large margins, close at lower right clear of the frame, nice clear impression and cancelled by crisp target obliteration; fine. B.P.A. Certificate (1975). S.G. 13, £4,250

£1,000-1,500

x185 ○

2d. blue on bluish paper, intermediate impression, clear to good margins and fresh appearance, lightly cancelled by numeral '1'; small central thin as a result of hinge removal not affecting appearance. S.G. 14, £3,500

£800-1,200



186

- x186 ○ 2d. blue on bluish paper, late intermediate impression, variety 'PENOE' for 'PENCE' [7], large even margins and lightly cancelled by numeral '2' of Flacq, fine and rare. Hunziker Certificate (1968) and signed Holcombe. S.G. 14a, £8,000 £3,000-5,000



187



188



189

- x187 ○ 2d. blue, worn impression, variety 'PENOE' for 'PENCE' [7], four good margins, huge at right, light target cancellation and part transit marking at lower left; trace of a tiny thin in upper margin only. A good example of this rare plate variety. S.G. 20a, £3,500 £700-900
- x188 ○ 2d. grey-blue on greyish paper, worn impression, good large margins all round and crisp numeral '2' cancellation of Flacq, a good example of the later printing. S.G. 21, £1,600 £500-600
- PROVENANCE:
Ferrari, 1921
- x189 ○ 2d. blue on greyish paper, worn impression, fresh colour and good even margins, cancelled by light numeral '1' of Mahèbourg, fine appearance. S.G. 22, £1,600 £600-800

1859 Lapirot Issue



190



191

- x190 ○ 2d. deep blue, early impression [1], a very fresh and fine example neatly cancelled by central strike of numeral '14' of Rivière du Rempart, large to enormous margins and very sharp impression, absolutely superb. B.P.A. Certificate (1978). S.G. 36, £3,750 £2,000-3,000
- x191 ○ 2d. blue, early impression [2], huge even margins and light barred oval cancellation leaving the majority of the profile clear; very fine. Philatelic Foundation Certificate (1977). S.G. 37, £3,250 £1,200-1,600

Mauritius, 1859 Lapirot Issue - *contd.*



192

x192 ○

2d. blue, intermediate print, horizontal pair [5-6], enormous margins all round with part of adjoining stamp showing at foot, cancelled by barred ovals, small part red transit c.d.s. and French manuscript rate marking at foot and left; slight thin at upper margin, fine appearance. S.G. 38, £2,800+

£1,500-2,500

PROVENANCE:

Dale-Lichtenstein, 1970



193

x193 ☒

2d. blue, intermediate impression, exceptional vertical pair with wide sheet margin at right [8-12], tied barred ovals on 1850 (9 Jan.) cover from Port Louis to Bordeaux sent aboard "Benares" via Aden, G.P.O. despatch datestamp on flap; corner of [8] stamp folded when dumb oval cancellation applied, the stamps have been removed, pressed and treated to reduce staining and replaced. A rare cover. Signed Calves and with B.P.A. Certificate (1996). S.G. 38

£3,000-5,000



194

x194 ○

2d. blue on bluish paper, worn impression, a used horizontal pair [6-7] with enormous margins, cancelled by barred ovals; small brown stain spot in the margin at left, otherwise fine and an exceptional multiple. Brandon Certificate (2004). S.G. 39, £1,800+

£1,000-1,500

1859 Sherwin Issue



195

- x195 ○ 2d. deep blue on bluish paper [10], a used example from the top of the sheet, large margins elsewhere and cancelled by crisp barred oval leaving the profile clear, a fresh and superb example, seldom found in such fine condition. B.P.A. Certificate (1988). S.G. 40, £8,000++ £5,000-7,000
- PROVENANCE:
Burrus, 1963

1859 Dardenne Issue



196



197



198

- x196 ○ 1d. red, variety **extra serif on second 'N' of 'PENNY'**, good to huge margins and light barred oval cancellation, fine. S.G. 41a, £1,700 £700-900
- x197 ○ 1d. dull vermilion, variety **cut transfer (lower left)**, large even margins and light barred oval cancellation. R.P.S. Certificate (1975) which does not mention the variety. S.G. 42, £1,400 £700-900
- x198 ○ 2d. pale blue, **slight doubling at foot and litho 'blister' flaws**, good to large margins and crisp target cancellation; fine. Initialled E.D(iena). S.G. 44, £850 £300-400

Mauritius - contd.



Ex 199



Ex 200

- x199 ★ 1878 surcharge set of nine to 2r.50c. on 5/- bright mauve, a couple with wing-margins, unused or with part gum; a few minor faults in a few places. S.G. 83-91, £700 £200-300
- x200 ★ 1879-80 CC 2c. to 2r.50 set of nine chiefly with small part original gum; a few values with trimmed or lightly toned perfs., otherwise good examples. S.G. 92-100, £1,000 £300-400



Ex 201

- x201 1900-05 CC 1r. to 5r. selection on an exhibition page including 1r., 2r.50c. and 5r. all overprinted 'SPECIMEN', 1r. horizontal pair from the top of the sheet with plate number, 1r. with **watermark inverted** both mint and fine used, 2r.50c. and 5r. both mint and fine used; an attractive group in fine condition. S.G. 153s-155s and 153-155 £200-300



202



203

- x202 ○ 1902 12c. on 36c. orange and ultramarine, variety **surcharge inverted**, lightly cancelled by part datestamp leaving the variety very clear; a fine example. Brandon Certificate (2004). S.G. 163a, £475 £200-300
- x203 ☼ 1924 50r. dull purple and green, unmounted mint corner marginal example with sheet number '006'; a superb and highly attractive example of this scarce and popular stamp. S.G. 222, £950 £600-800

NATAL



Ex 204

x204

1859-1908 mint and used collection on pages including 1859 1d. mint and used (7) and 3d. blue used (4), 1861 6d. grey used (2), 1863-65 6d. lilac, 1867 CC 1/- green mint and used, 1869 Postage selection with values to 1/- mint and used, 1874-99 set to 5/- mint and used with duplication, a selection of covers bearing 1874-91 various issues (7, some with mixed frankings), 1902 CA and CC set to £20 overprinted "SPECIMEN", the issued set to £1.10 mint and £5 with fiscal cancel cleaned, also the set used to £1.10, 1904-08 MCA set to £1.10 mint (£1.10 with Nussbaum Cert.) and also £1.10 overprinted "SPECIMEN", 1908-09 MCA set to £1 overprinted "SPECIMEN", the issued set to £1 both mint and used, 1904-06 Official set of six to 1/- mint, etc., a lovely fresh virtually untouched collection with huge catalogue value, chiefly good to fine

£3,000-5,000

NAURU



205

x205 ★

1916 Waterlow 10/- indigo-blue, a well-centred unused example without gum, very slightly stained in places though overall a good example of this rare stamp. Brandon Certificate (1999). S.G. 18, £11,000

£1,000-1,500

NEW BRUNSWICK

1851-60 Issue



206



207



208

- | | | |
|--------|--|--------------|
| x206 ★ | 6d. olive-yellow on blued paper, four clear margins and with part original gum; vertical crease, still a fresh looking example. B.P.A. Certificate (1974). S.G. 4, £5,000 | £1,000-1,500 |
| x207 ★ | 1/- dull mauve unused, clear to large margins, good fresh colour; small thin and nick in '12' at foot though of good appearance. A rare stamp. S.G. 6, £25,000 | £1,500-2,500 |
| x208 ○ | 1/- dull mauve, clear to good margins and lightly cancelled by barred oval; small thin, otherwise a good presentable example of this rare stamp. Georg Bühler Certificate (1980). S.G. 6, £5,000 | £800-1,200 |

NEW HEBRIDES



209

- | | | |
|--------|---|--------------|
| x209 ★ | 1908 1d. red vertical pair, the lower stamp variety overprint omitted , lightly mounted mint; a huge rarity and the key variety of the New Hebrides, a handsome and striking error. R.P.S. (1985) and Behr (1999) Certificates. S.G. 2a, £10,000 | £4,500-6,500 |
|--------|---|--------------|

NEW ZEALAND

Postal Fiscal Stamps



Ex 210

x210 ★

1931-58 mint selection (28) on a Hagner page comprising 1931-40 Cowan paper 1/3d. orange-yellow to 10/- carmine-lake, 15/- sage-green to 30/- brown and £2.10/- red to £4 light blue, 1940 Wiggins Teape surcharge set of four and 1940-58 Wiggins Teape paper 1/3d. orange-yellow, 25/- greenish blue, £2 bright purple, £2.10/- red, £3 green and £5 indigo-blue; fresh and fine, the majority lightly mounted mint. Cat. £9,000+

£2,000-4,000



211



212



213

x211 ★

Cowan paper 35/- orange-yellow, lightly mounted mint; a very fresh and fine example of this rare stamp. S.G. F161, £6,000

£2,000-3,000

x212 ★

Cowan paper £3.10/- rose, lightly mounted mint; fine and rare. S.G. F165, £2,250

£800-1,200

x213 ★

Cowan paper £4.10/- deep olive-grey, lightly mounted mint, fine. S.G. F167, £2,000

£800-1,200



214



Ex 215



216

x214 ☉

1939 Cowan paper 35/- on 35/- orange-yellow, fine unmounted mint. S.G. F186, £900

£250-350

x215 ★

1940 Wiggins Teape 3/6d. on 3/6d. to 22/- on 22/- set of four, lightly mounted mint. S.G. F187-190, £1,100

£300-400

x216 ★

1948 Wiggins Teape with vertical mesh £3.10/- rose, large part original toned gum. Rare. S.G. F209, £3,500

£1,000-1,500

NEWFOUNDLAND

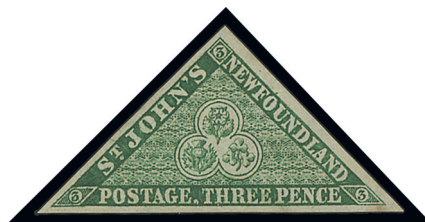


217

x217

1857-1947 mint and used collection on Stanley Gibbons album pages including 1857 8d. scarlet-vermilion unused, 1861 and 1862 with values to 1/- mint, 1865-70 to 24c. mint/used, 1880 set to 5c. blue used, 1887 set to 10c. used, 1897 set of fourteen to 60c. black mint and also used, 1897-1918 set to 5c. mint and also used, 1910 set to 15c. mint, 1911 set of six mint, 1911 Coronation set of eleven mint, 1919 Caribou set to 36c. both mint and used, 1920 3c. on 15c. mint and block of four mint, 1921 Airmail to Halifax 35c. with **no stop after '1921'** mint, 1923 set of fourteen mint and also used, 1928 set of fifteen mint, 1931 set of eleven to 30c. mint, Airmails including 1933 Balbo \$4.50 on 75c. block of four mint, 1933 set mint, etc., light foxing in places throughout, though plenty good to fine

£1,500-2,500



Ex 218

x218 ★

1857-64 mint group on a stockpage including 1857 1d. and 3d., 1860 3d. (2) and 5d., 1862-64 selection with 2d. (2), 4d. (2), 5d. (4, including corner example with enormous margins), 6d. (2), 8d., and 1/- (2), the majority with large part original gum; chiefly fine

£500-600



219



220

x219 ★ 1857 6½d. scarlet-vermilion, unused without gum, huge margin at left and slightly uneven but clear margins at right, touched at foot; fresh and fine appearance. Sergio Sismondo Certificate (2002). S.G. 7, £4,500 £750-1,000

x220 ★ 1857 8d. scarlet-vermilion, huge even margins, unused without gum; fresh appearance. Initialled E.D(iena). S.G. 8, £400 £100-150



221



222

x221 ○ 1857 1/- scarlet-vermilion, just clear on all sides and with fresh colour, lightly cancelled; a good example of this rare stamp. R.P.S. Certificate (1975) and C.P.E.J. Certificate (2004). S.G. 9, £9,000 £2,000-3,000

x222 ★ 1860 4d. orange-vermilion, three large margins and clear at foot, unused without gum, fresh appearance. R.P.S. Certificate (1972) for regumming, subsequently removed. S.G. 12, £4,500 £500-600



The Royal Philatelic Society London

We are pleased to receive proposals for membership of the Society which is through election.

If you are interested in membership, please contact us at secretary@rpsl.org.uk

If you have no proposer or seconder, please contact us for further information.

Tel: 00 44 (0)20 7486 1044 | www.rpsl.org.uk

The world's oldest and most prestigious philatelic society, established 1869, with over 2,000 members in more than 70 countries.

Extensive premises in London's West End house the Society's superlative library, plus Museum and Archive, and provide first-class meeting facilities.

The Society's Online Catalogue provides access to over three-quarters of a million philatelic indexes to members world-wide.

A fascinating programme of displays and meetings throughout the year, supplemented by regional meetings and gatherings at major international events.

The Society publishes ten times a year its own journal, *The London Philatelist*, containing articles of outstanding philatelic research, in addition to publishing major philatelic works.

We are honoured to have Her Majesty Queen Elizabeth II as our Royal Patron

Newfoundland - *contd.*



Ex 223

x223

1862-1947 mint and used collection in a well-filled Frank Godden album including 1862 4d. used (2) and 6d. used (2), 1865-70 thin yellowish paper 2c. to 24c. both mint and used, 1868-73 to 6c. mint, 1880 1c. brown block of eight with imprint and mint set to 5c. blue, unused 1c. green stationery card, 1887 set to 10c. mint and used, 1897 set of fourteen to 35c. mint 1910 set of eleven to 15c. black mint, 1911 set of six mint, 1911 Coronation set of eleven mint, 1919 Caribou set to 36c. including 15c. Prussian blue mint, 1920 3c. on 35c. block of four, 1923-24 set of fourteen to 24c., 1928 and 1929 sets mint including some First Day Covers, 1932 set including imperforate pairs, Airmails, 1933 set of fourteen mint, 1937 2c. green bisected on covers (4), later sets and multiples, Postage Dues, etc., a lovely collection in chiefly good to fine condition

£2,000-4,000



Ex 224

x224 ★

1865-97 group of mainly mint multiples including 1865 12c. red-brown block of four and 24c. blue block of ten, 1880-82 3c. blue block of nine from the right of the sheet (also an example used on cover), 1887 ½c. rose-red block of four, 1c. green block of four-with part imprint, 2c. orange-vermilion block of four and 3c. brown vertical pair from the left of the sheet, 1890 3c. slate block of four (2), 1896-98 ½c. orange-vermilion block of four and 1897 1c. Type 1 on 3c. grey-purple used on cover; a good and useful range, chiefly fine and with large part original gum

£700-1,000



225

x225 ④ ★

1919 "Hawker" 3c. brown, signed 'J.A.R.', the initials of the postmaster, J. A. Robinson, in black on reverse, fresh and fine with large part original gum. Signed G. Bolaffi in pencil. S.G. 142, £22,000

£8,500-12,000

Note: Only eighty-seven unused examples are known.



226

x226 ④ ★ ①

1921 Halifax 35c. red, pane of twenty-five showing the complete setting with the six different variants including surcharge spaced $2\frac{3}{4}$ mm. and with no stop after '1921', no stop and first '1' below 'f' of 'Halifax' and the same varieties with the surcharge spaced $1\frac{1}{2}$ mm., mounted on four stamps only; seldom offered complete and rare thus. S.G. 148-148b and 148f-148h, £4,270+

£2,500-3,500

Newfoundland - *contd.*

1931 Air Issue



227

x227 ④ ★

15c. chocolate horizontal pair from the right of the sheet, variety **imperforate**, large part original gum; diagonal gum bend at top. S.G. 192c, £550

£200-300



228

x228 ④ ★

50c. green horizontal pair from the right of the sheet, variety **imperforate between**, very lightly mounted mint; fine. S.G. 193a, £1,300

£300-400



229



230

x229 ④ ★

\$1 deep blue vertical pair, variety **imperforate between**, large part original gum. S.G. 192b, £1,200

£400-500

x230 ④ ★

\$1 deep blue vertical pair, variety **imperforate**, fine lightly mounted mint. S.G. 194c, £900

£250-300

NIGER COAST



231

x231 ○

1893 'Half/Penny' Type 7 on 2½d. purple on blue with **bounced second impression of surcharge**, used with Old Calabar River cancellation. B.P.A. Certificate (2003). S.G. 21 var.

£100-200



232

x232 ☒

1894 (11 Sept.) envelope registered to Luton bearing 1892 2d. grey-green and carmine **bisected diagonally** and used in conjunction with 1894 1d. orange-vermilion **bisected diagonally** along with 1892 1d. blue and 2d. green (the latter both with faults) to make up the 4½d. rate, all tied by 'BONNY' squared-circle cancellations, showing "R" handstamp, Liverpool registration datestamp to face and Luton arrival datestamp on reverse. S.G. 3a, 52b, £2,800+

£500-600



233

233 ○

1894 Old Calabar provisional "ONE/HALF PENNY" on 2½d. blue, variety 'OIE' for 'ONE', a marginal example used with Old Calabar c.d.s. in violet, formerly tied to small piece now detached. B.P.A. Certificate (2016). S.G. 65b, £1,200

£500-600

NORTH BORNEO



234

x234 ★

1883 'EIGHT CENTS' Type 3 on 2c. red-brown, unused with part original gum. B.P.A. Certificate (1999). S.G. 3, £500

£150-250



Ex 235

x235 ★

1886-1931 mint selection on a Hagner page and an album page including 1890 2c. on 25c. indigo variety **surcharge inverted**, 1891 6c. on 10c. blue variety **surcharge inverted**, 1894 set to 24c., 1901 British Protectorate overprints including \$10, 1922 Malaya-Borneo Exhibition 20c. on 18c. pair one with variety **stop after 'EXHIBITION'** and 50c. pair one with variety **stop after 'EXHIBITION'**, 1931 \$5 black and purple, Red Cross overprints, etc.; a few a little toned in places though a useful range in good to fine condition

£400-600



236



Ex 237

x236 ★田

1891-92 '6 cents.' on 1886-87 10c. blue block of four from the top of the sheet, variety **surcharge treble**, lightly mounted on upper pair only; a few minor gum wrinkles as often found; a striking multiple. S.G. 56c, £2,200+

£400-500

x237 ◎

1895 Surcharge on \$1 scarlet set of five and 1931 3c. to \$5 set of eight, all overprinted "SPECIMEN", part to large part original gum. S.G. 87s-91s, 295s-302s, £440

£150-250



Ex 238

x238 ★

1897-1902 Pictorial Issue mint collection offering a wide range of shades and perforations with at least two blocks of four of all values, 5c. blocks of eighteen and thirty-five, 8c. block of twenty-four, 12c. sheet of one hundred (divided in the centre), 16c. block of ten, 1909 20c. on 18c. (10 with two blocks of four) and 1923 3c. on 4c. (16, with three blocks of four, five stamps showing offset of "CENTS"). Generally good to fine and an attractive assembly. Cat. £12,000+

£1,500-3,000

PROVENANCE:

‘Sentosa’, Spink Singapore, August 2015



239

x239 ★

1899 4c. on 12c. black and dull blue horizontal pair, variety **imperforate between**, large part original gum. B.P.A. Certificate (1949). S.G. 115a, £850

£250-350



240

x240 ★

1922 Malaya-Borneo Exhibition 5c. orange-brown vertical pair, variety **imperforate between**, lightly mounted on the upper stamp only. Fine and rare. Ceremuga Certificate (2005). S.G. 258a, £2,000

£700-900

North Borneo - *contd.*



Ex 241

x241 ★

1931 Pictorial sets of eight, one overprinted "SPECIMEN" and one as issued, large part original gum; the Specimen set with some paper adhesion on the reverse of most values. S.G. 295s-302s, 295-302, £650

£200-300

NOVA SCOTIA



Ex 242

x242 田

1860-63 group of plate proofs each in blocks of four (24) comprising 1c. in black, green, dark violet and orange, 2c. in lilac, grey and orange, 5c. in blue, black and orange (irregular and cut-into on one side), 8½c. in light bluish-green, dark green, black and orange, 10c. in vermillion, black (overprinted 'SPECIMEN' very lightly in red), dull red, yellow-brown, green, blue and orange, and 12½c. in black, vermillion and orange; all on India paper with a few mounted on card, scarce multiples. An attractive group. Unitrade C\$10,000+

£2,000-4,000

NYASALAND



Ex 243

x243 ©

1896-1921 group all overprinted "SPECIMEN" comprising 1896 set to £25, 1903-04 set to £10, 1908-11 set to £10 (£10 with some paper adhesion to face) and 1913-21 set to £1, part to large part original gum, some with minor faults such as light toning. S.G. 32s-42s, 59s-67s, 72-82s and 83s-98s, £4,000+

£750-1,000



244

x244 ★

1895 £25 black and blue-green, lightly mounted mint, some very minor toning of the gum which does not affect the fine and fresh appearance of this great rarity. S.G. 31, £16,000

£3,500-6,500

PROVENANCE:
Robson Lowe, Basel V, April 1978

Nyasaland - *contd.*



245

246

x245 ©

1896 CC £1 black and blue, £10 black and orange and £25 black and green, each overprinted "SPECIMEN", large part original gum; £25 with tiny tone spot on reverse, otherwise fine. S.G. 40s-42s, £750+

£250-350

x246 ©

1896 CC £25 black and green, overprinted "SPECIMEN", large part original gum. S.G. 42s, £450

£150-250



Ex 247

248

x247 ©

1903-04 1d. to £10 set of ten, each overprinted "SPECIMEN" (D12), fresh and fine mint. S.G. 59-67, £925

£300-400

x248 ★

1919 MCA £10 purple and royal blue, lightly mounted mint, a very fresh and fine example of this popular and rare high value. Signed Raybaudi. S.G. 99e, £4,000

£2,000-3,000

Revenue Stamp



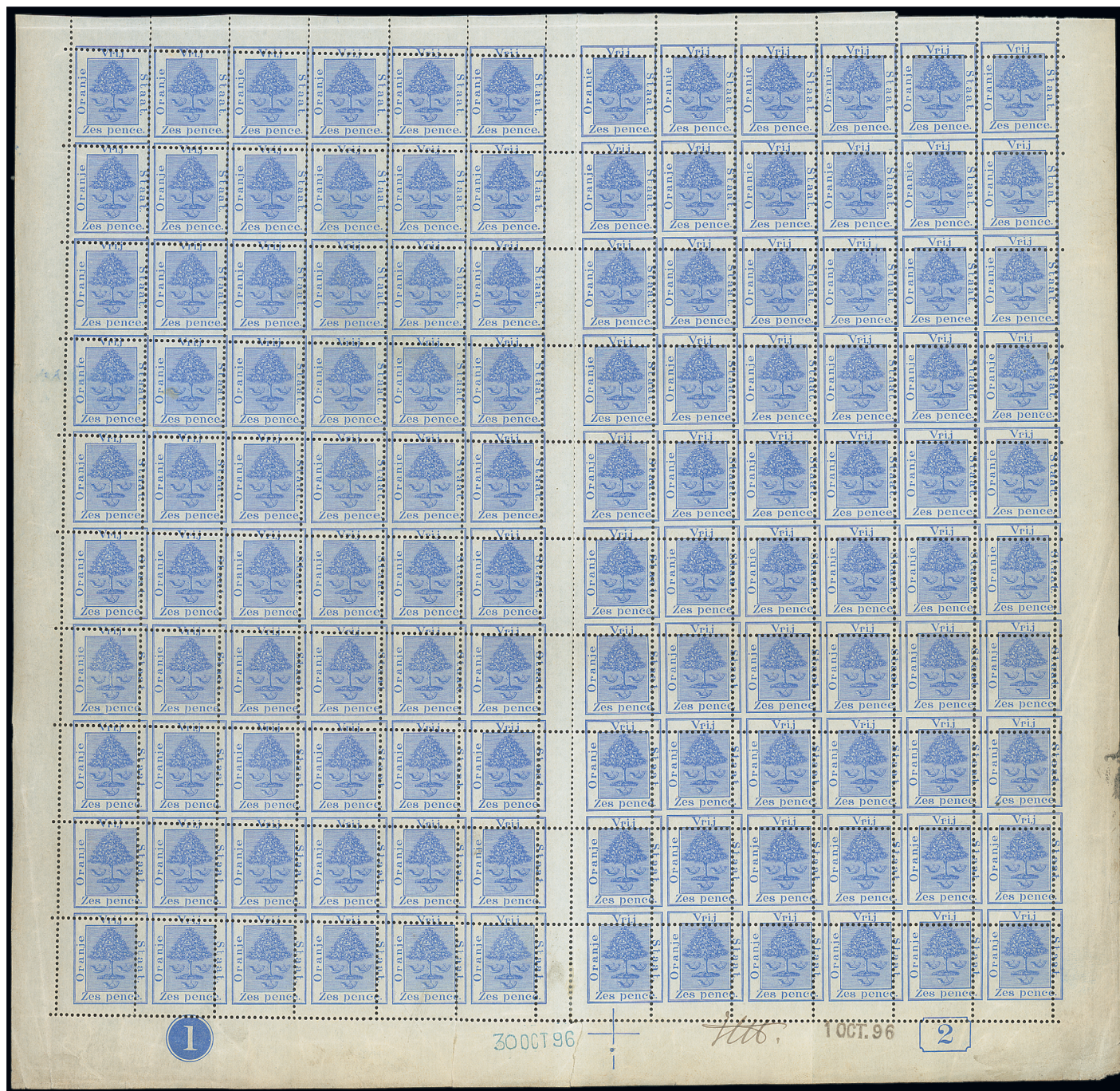
249

x249 ©

1891 B.C.A. imperforate £25 blue perforated "SPECIMEN" twice; one rather heavy hinge remainder though a nice example of this rare stamp. Barefoot 10s

£500-600

ORANGE FREE STATE



250

x250 ④

1897 perf. 14 6d. blue, **prepared for use but not issued**, two horizontal complete panes of sixty from the lower half of the sheet with plate number '1' at foot and handstamped '30 Oct 96'; a few gum bends and minor creasing in places. The De La Rue archive sheet. S.G. footnote after 87, £7,800+

£2,000-3,000

Note: The stamp was never issued due to the British occupation of Bloemfontein and is only found overprinted V.R.I. This is a unique and important multiple.

RHODESIA



Ex 251

x251

1892-1924 mint and used collection on album pages including 1892-93 set to £2 rose-red mint and with £5 (3) and £10 (2) fiscally used, 1892-94 with values to 4/- and with some values in blocks of four, 1896-97 Die I set to 4/- mint and Die II set to 10/- (3) all mint, 1896 Cape of Good Hope overprint set to 1/- (with duplication), 1897 set of eight to £1 mint and used, some in complete sheets, 1898-1908 set to £2 mint and to £10 fiscally used (including high value multiples) and with lower values mint in duplicate, 1905 Falls set to 1/- mint and used, 1910-13 Double Heads to 10/- mint and with shades and duplication, 1913-19 Admirals with values to £1 mint and used, surcharges, multiples, etc., an interesting range in chiefly good to fine condition; some minor faults on some of the used. High catalogue value

£4,000-6,000



Ex 252

x252 ★

1892-1909 mint collection on album pages including 1892-93 set of eleven to £10 brown, 1892 surcharge set of four, 1892-94 set to 4/-, 1896-97 sets (both Dies), 1896 Surcharges, 1897 £2 rosy red (Brandon Certificate), 1898-1908 set to £2 mint (also £5 with filled perfin holes), 1905 Falls set, 1909-12 set to £1 and a page of this issue with **no stop** varieties including 1/- (3), 5/- (4) and 10/-; a very useful group in chiefly good to fine condition. Cat. £14,000+

£1,500-3,000



253

Ex 254

x253 ★

1892-93 £5 sage-green, well-centred example with part original gum, fine. S.G. 12, £1,600

£700-900

x254 ★

1892-93 £5 sage-green marginal and £10 brown (diagonal crease) both unused without gum and 1898-1908 £1 greyish red-purple with part original gum and £5 deep blue unused without gum; a useful group. S.G. 12-13, 90 and 92, £7,975

£800-1,200



Ex 255

x255 ©

1898-1908 £2 brown, £5 deep-blue and £10 lilac, all perforated "SPECIMEN" and including eighty-seven examples of the £2 with pairs, strips of three, four and five, eleven examples of the £5 with a pair, a strip of three and a strip of four, thirteen examples of the £10 including two strips of three and a strip of six, all without gum; attractive multiples and a useful group. S.G. 91s-93s

£800-1,200

1910-13 Double Head Issue

Perforated 14



Ex 256

x256 ★

½d. to £1 carmine-red and bluish black set of eighteen, the 8d. perf. 13½, large part original gum; fresh and fine. S.G. 119-165 group, £4,000+

£1,500-2,500

Rhodesia, 1910-13 Double Head Issue, Perforated 14 - *contd.*



Ex 257

- x257 ★ ½d. (3), 1d. bright carmine, 2d. black and grey, 2½d. (2), 3d. purple and ochre, 4d. black and orange (2), 5d. purple-brown and olive-green, 6d. red-brown and mauve, 8d. greenish black and purple, 10d. scarlet and reddish mauve, 1/- grey-black and deep blue-green, 2/- black and ultramarine, 2/6d. black and crimson, 3/- green and violet, 5/- vermilion and deep green, 7/6d. carmine and pale blue, 10/- blue-green and orange, and perf. 13½ 2½d. and 8d., part to large part original gum, a generally fine group. Cat. £3,200+

£700-900



Ex 258

- x258 ★ ½d. dull green, ½d. bluish green, 5d. **error of colour** purple-brown and ochre (P.F.S.A. Cert. 1979), 2/6d. black and crimson, 3/- green and violet (two shades), 5/- vermilion and deep green (3), £1 rose-scarlet and bluish black and £1 crimson and slate-black; all with large part original gum, fine. Cat. £6,000+

£1,000-2,000



Ex 259

- x259 ★ 1d. (2), 2d., 2½d. (3, shades), 6d., 10d., 1/-, 2/-, 2/6d., 5/-, 10/- and perf. 13½ 2½d. (2) and 8d. (two shades), all with large part original gum; 2/6d. thinned though generally fine. Cat. £1,890

£250-350



260

- x260 ○ 7/6d. deep rose-red and bright grey-blue, RSC "C", neatly cancelled-to-order with Salisbury datestamp, fresh and fine. R.P.S. Certificate (1984)

£250-300

Perforated 15



Ex 261

x261 ★

½d. blue-green, 1d. carmine, 2d. black and grey black, 2½d. ultramarine, 3d. claret and pale yellow-ochre and 4d. black and orange, all but the 3d., which is regummed, unused with part to large part original gum, and £1 red and black with fiscal perfin and cancellation and a good space filler. A nice group with a few very minor faults in places. S.G. 167-179 group, £5,600+

£1,000-2,000



Ex 262

x262 ★

1d. (2), 2d., 4d., 5d. (thin), 6d. (toned and with one blunt corner), 1/- and 2/- (thin spot), small to large part original gum and generally of fine appearance. Cat. £7,000+

£800-1,200

x263 ★

1d. carmine **vertical strip of four** from the top of the sheet, large part original gum with two apparently unmounted; a few minor tone marks in places; a scarce multiple. S.G. 170, £1,200+

£250-350



264

x264 ○

£1 red and black, neatly cancelled by "BULAWAYO STATION" c.d.s., fine and rare. B.P.A. Certificate (2003). S.G. 179, £3,250

£1,000-1,500

Perforated 13½



265

x265 ★

1d. bright carmine with large part original gum; a few perfs. with traces of foxing, otherwise sound and a presentable example of this scarce stamp. S.G. 183, £2,000

£500-600

Rhodesia - *contd.*

1913-24 Admiral Issue



Ex 266

- x266 ★ Mint collection on pages including head proof, ½d. to £1 set of eighteen (no 1½d.) with additional ½d., 1d. and 5/-, all overprinted "SPECIMEN", Die I perf. 14 2/- and perf. 15 4d., Die II perf. 14 selection with 1/-, 2/-, 2/6d. (2), 3/- (4), 5/-, 7/6d., 10/- (3), £1 black and purple and £1 black and deep purple (2), Die II perf. 15 8d., 5/-, 7/6d. (3) and 10/- (2), Die III selection to 2/-, 2/6d. (2), 5/-, 10/- and £1 black and deep violet, White paper perf. 14 5/- (2), 7/6d. (2), 10/- and £1 black and magenta, and perf. 15 2d., 6d., 8d., 10d., 2/6d. and 5/-; chiefly good to fine. Cat. in excess of £11,000 £3,000-5,000
- x267 ★ ½d. (4), 1d. (3), 1½d. (2) and 2½d. (2), Die I perf. 14 2d. and perf. 15 3d., 4d. and 6d., Die II perf. 14 2d., 3d. (two shades), 5d., 10d., 1/-, perf. 15 8d., 10d., 1/- and 7/6d. Die IIIB 3d., 5d. (two shades), 10d., 2/6d. and 5/-, and White paper perf. 14 6d., 1/-, 3/-, 5/-, 10/- and perf. 15 6d. and 3/-, good to fine mint. Cat. c. £2,500 £600-800
- x268 ○ Die II, perf. 15 4d. black and deep orange-vermilion, fine used; a scarce stamp. S.G. 245, £275 £100-150



269



270



271

- x269 ★ Die II, perf. 15, £1 black and purple with vignette misplaced to right, fresh with large part original gum; small mark at upper left side, otherwise fine and scarce. S.G. 254, £1,800 £500-600
- x270 ㊦ Die IIIB 5/- deep blue and blue-green block of four, fine unmounted mint. S.G. 275, £600+ £200-250
- x271 ★ White paper, perf. 15 £1 black and deep magenta, fine mint. Scarce. S.G. 311, £1,000 £300-400

ST. HELENA



272



Ex 273

- x272 © 1911 MCA prepared for use but not issued and printed in error 1d. red, overprinted "SPECIMEN", lightly mounted mint. S.G. 71s, £425 £150-250
- Note: This stamp was printed by mistake after a misunderstanding between the Postmaster and De La Rue. The supply was sent to St. Helena but withdrawn and destroyed. Specimen examples were sent to U.P.U. member countries.*
- x273 ★ 1922-37 MCA 4d. to £1 set of five (2), large part original gum. S.G. 92-96, £1,000 £350-450



Ex 274

275

- x274 ★ 1922-37 Script ½d. to 15/- set of seventeen, large part original gum; fine examples of this popular set. S.G. 97-113, £1,525 £600-700
- x275 ★ 1922-37 Script 15/- grey and purple on blue marginal example from the left of the sheet, lightly mounted mint; a fine example of this popular high value. S.G. 113, £1,100 £450-550

ST. KITTS-NEVIS

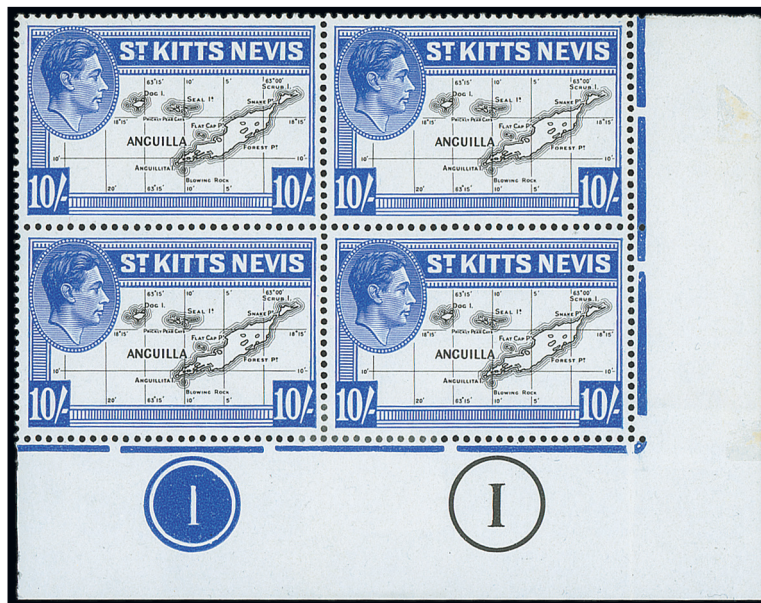
- x276 ★ 1903-50 mint selection on stockcards including 1903 CA set to 5/- (3 of most values including 5/-), 1905-18 MCA to 5/- with duplication, 1920-22 MCA set to £1 with duplication, 1938-50 Script set to £1 (2) and 1952 St. Christopher, Nevis and Anguilla set to \$4.80; all with large part original gum, some unmounted mint. Cat. £1,300+ £300-400



277

- x277 ★ 1923 Tercentenary £1 black and purple on red, lightly mounted mint; slightly blunt corner at lower right, otherwise sound. S.G. 60, £800 £200-300

St. Kitts-Nevis - *contd.*



Ex 278

x278 ★

1938-50 mint collection including ½d. blocks of four (8) and singles (3), 1d. blocks of four (9) and singles (7, one carmine-pink), 1½d. interpanneau block of eight, blocks of four (8) and singles (4), 2d. blocks of four (8, two perf. 13x12) and singles (7, two perf. 13x12), 2½d. blocks of four (9) and singles (3), 3d. blocks of four (14, two perf. 13x12) and singles (9, two perf. 13x12), 6d. blocks of four (10, one perf. 13x12) and singles (7), 1/- blocks of four (4) and singles (5), 2/6d. blocks of four (5) and singles (6), 5/- blocks of four (6, two perf. 13x12) and singles (5), 10/- and £1 corner blocks of four with plate numbers and singles, various papers, perforations and shades, mostly fine mint. S.G. 68-77f, £5,500+

£1,500-3,000

PROVENANCE:
Graham Cooper, December 2016

ST. LUCIA

x279 ★

1902-63 mint selection on stockcards including 1902-03 CA set to 1/-, 1904-10 MCA set of fourteen to 5/-, 1912-21 MCA set to 5/- plus some Specimens, 1921-30 set of fifteen plus some blocks of four with plate numbers, 1936 set of twelve (2), 1938-48 set of seventeen, etc., fine. S.G. £1,000+

£200-300

ST. VINCENT



— 280 —

x280 ★

1885 4d. red-brown, part original redistributed gum with Brandon Certificate (2004) and 1886 4d. purple brown with part original gum. S.G. 50-51, £1,050

£400-500

SAMOA



281

x281 ★

1914 G.R.I. overprint '3 SHILLINGS.' on 3m. violet-black, lightly mounted mint; scarce. Initialled A. D(iena) and with R.P.S. Certificate (1966). S.G. 113, £1,400

£400-500

SARAWAK

x282

1869 (Mar.) 3c. unused (5 including a block of four) and used, 1871 (Jan.) 3c. unused (3, including a pair showing **stop after "THREE"**) and used, 1875 (Jan.) 4c. imperforate proof, 2c. to 12c. unused and 4c. to 12c. used, 1892 (May) 1c. on 3c. unused (3, one with **surcharge double**) and used (2, one with **stop after "THREE"**) and 1899 surcharge set of four unused and used with additional unused 2c. on 3c., 2c. on 12c. and 4c. on 8c. pair, the left stamp with "4" missing and the right stamp with whole of surcharge missing; condition generally fine

£300-400

x283 ★

1888-1965 mint collection on album pages including 1888-97 1c. to \$1 (slightly rounded top right corner), 1899-1908 1c. to \$1 set of twelve with some shades plus prepared but not issued 5c. block of four (toned), 1902 2c., 1918 1c. to \$1 plus prepared but not issued 5c. block of four with plate number, 1922-23 2c. to 30c., 1928-29 1c. to \$1 plus 5c. imperforate proof, 1932 1c. to \$1 plus \$1 imperforate block of four with large circular punch hole from the printer's archive, 1934-41 1c. to \$10, 1945 BMA set to \$10, 1947 Cypher to \$5, 1948 Wedding, 1950 1c. to \$5 and 1955-57 to \$5; a few small faults on some of the earlier issues, otherwise fine. Cat £2,500

£500-700

SEYCHELLES



Ex 284

286

- x284 ○ 1860-80 group of Mauritius stamps used in the Seychelles and cancelled by 'B64' obliterator, comprising 1d. purple-brown (4, including one used on piece in conjunction with 9d. dull purple), 2d. blue, 6d. green, 6d. dull violet, 9d. (2, as well as the aforementioned used on piece) and 1879-80 4d.; a few minor faults though generally good to fine £400-500
- x285 © 1890-1961 collection of mainly Specimen sets hinged to archival pages, complete with all Specimen sets from 1890 to 1946 Victory, from 1948-1961 the issued mint sets hinged to the pages; some minor faults to some earlier issues; very fresh and bright appearance. Cat. £3,600+ £600-800
- x286 © 1890-92 CA 48c. ochre and green, variety **albino '3 cents' surcharge at top** (as used on the 1893 3c. on 4c.) with traces of ink, overprinted "SPECIMEN", highly unusual and the only example known. S.G. 7s var. £500-600
- PROVENANCE:
Hopson, South and Weiss

SIERRA LEONE



Ex 287

- x287 ★ 1859-1963 mint collection on album pages including 1872-73 set (4d. used), 1876 set (4d. used), 1896-97 set, 1897 Postal Fiscal 2½d. on 3d. (4, two used), 2½d. on 6d. (4 with a pair, one used), 2½d. on 1/- (2 both faded as often found), 1903, 1904-05 and 1907-12 sets, 1912-21 MCA ½d. to £5 (trace of ageing on a few values including the £5), 1921-27 Script set to £2, 1933 Wilberforce set to £1, 1938-44 and 1956 sets, etc., chiefly good to fine and with fresh appearance £2,000-3,000



288



Ex 289

x288 ★ 1897 Postal Fiscal 2½d. Type 13 on 1/- dull lilac, large part original gum; a good example of this scarce surcharge type. Sorani Certificate (1990). S.G. 66b, £1,800 £700-800

x289 ★ 1903 CA set of thirteen to £1, lightly mounted mint. S.G. 73-85, £450 £150-200



290



291

x290 ★ 1912 MCA £5 orange and green, large part original toned gum; the toning not affecting the fine appearance. S.G. 130, £4,500 £1,000-1,500

x291 ★ 1923 Script £5 orange and green, well-centred and lightly mounted mint; a fine example of this popular high value. S.G. 148, £3,500 £1,300-1,600



292

x292 ★ 1963 Second Anniversary of Independence 11/- on £1 black and orange, very lightly mounted mint. B.P.A. Certificate (2000). S.G. 269, £850 £200-300

SOMALILAND

Official Stamp



293

x293 ★

1904 MCA 2a. dull and bright purple, variety **no stop after 'm' in 'O.H.M.S.'**, lightly mounted mint. A fine example of this rare stamp with only eight examples recorded, one of which is in the Royal Philatelic Collection. S.G. O14a, £2,500

£900-1,200

SOUTHERN RHODESIA



Ex 294

x294 ★

1924-29 Admiral mint selection with **imperforate between stamp and margin** varieties comprising 1/2d. green and 1d. red blocks of four with imprint, 1d. red interpanneau pair, 1d. red strip of four with imprint at foot, 1d. red pair with imprint at top and 1d. "heart of the sheet" block of four imperforate between the right-hand vertical pair, and 1 1/2d. bistre horizontal pair with interpanneau margin at top; generally fine with large part original gum

£400-500

x295 ★

1931-37 set of fifteen to 5/- and some duplicate values including 1/2d. (2), 1d. (2), 1 1/2d., 4d. (2), 6d. (2), 8d., 10d., 1/- (2), 1/6d., 2/- and 2/6d; large part original gum. S.G. 15-27 group £280+

£60-80

TANGANYIKA



Ex 296

Ex 297

x296 © 1922-24 Script set of fifteen, overprinted “SPECIMEN”, large part original gum. S.G. 74s-88s, £900 £300-400

x297 ★ 1922-24 Script set of fifteen to £1, lightly mounted mint. S.G. 74-88a, £700 £250-350



Ex 298

x298 1927-31 Script set of sixteen to £1 (2), one set overprinted or perforated “SPECIMEN”, the as issued, large part original gum. S.G. 93s-107s, 93-107, £875 £300-400

TOBAGO



299

x299 ★ 1879 CC £1 mauve, large part original gum; a good example of this popular and difficult high value; very slightly creased as per B.P.A. Certificate (1969). S.G. 6, £4,500 £1,400-1,800

TOGO



Ex 300

x300 ★田

1914 3pf. to 20pf., 30pf. and 80pf. blocks of four, very fine and lightly mounted mint on the upper horizontal pair only; attractive and rare multiples. S.G. H1-H4, H6-H7 and H9, £3,700+

£2,000-3,000

TRANSVAAL

x301 ○

1870-1900 mainly used collection on Hagner pages with imperforate Large Arms to 1/- green, various printings and perforations, 'V. R. Transvaal' overprints, surcharges, etc., a useful range for the specialist or dealer

£400-500

TRINIDAD AND TOBAGO



Ex 302

x302 ★

1851-51 mainly mint collection comprising Trinidad with a good range of Britannias including first issue 4d. brownish-red, 1859 4d. grey-lilac and 1/- indigo, later perforated Britannias with values to 1/-, 1883-94 set to 5/-, 1896-1906 set to £1, 1904-09 set to £1, Trinidad and Tobago with 1913-23 MCA set to £1 and 1922-28 Script set to £1, Officials, War Tax, Postage Dues etc., Tobago including 1879 CC to 5/-, 1880 set to 1/-, 1885-96 set to 1/-, 1886-89 Surcharges etc., several earlier issues with Certificates; chiefly good to fine

£2,000-3,000

x303 ★

1913-58 largely mint collection including 1913-23 5/- and £1, 1914-18 War Tax selection, 1921-22 5/- and £1, 1922-28 and 1935-37 sets, 1938-44 and 1953 sets, 1923-45 Postage Dues sets; a good range, chiefly fine

£250-350

COLLECTIONS AND RANGES

x304

A mainly mint selection on pages comprising Bahrain 1933-37 set to 5r., Bermuda 1936-47 set of nine to 1/6d. in imprint blocks of eight or ten, Cape of Good Hope 1855 1d., 4d., 6d. and 1/- all used, Ceylon 1927-29 set of five to 20r., Hong Kong 1941 set of six to \$1 in blocks of four and Tristan da Cunha booklets (13) including 1957 3/6d. with blue cover postmarked May 30th 1957 on reverse, 1958 3/6d. red cover etc., a useful group

£400-600



Ex 305

x305 ★

A mint selection on a Hagner page and stockcard comprising Great Britain 1883 2/6d., Gilbert and Ellice Islands 1912-24 MCA set to £1, Gold Coast 1898-1902 CA set to 10/-, Nigeria 1936 set to £1, Sarawak 1934 set of twenty-six to \$10, St. Lucia 1904 MCA set of fourteen to 5/- plus the listed shades and Sierra Leone 1896 CA set to £1; all in fine condition with large part original gum. Cat. £3,300+

£800-1,000



Ex 306

x306 ★

A mint selection on a Hagner page and stockcards including Great Britain, Ascension with 1922 set to 3/- and 1924-33 set to 3/-, British Somaliland 2a. pair, variety 'BRIT SH', Bermuda with 1938 set to £1, British Solomon Islands set to 5/-, Cape Mafeking 1900 1d. (2) used on piece, Cayman Islands 1935 set to 10/-, K.U.T. values to 10/-, Rhodesia with 1913 Admiral 5d. to 3/- overprinted 'SPECIMEN' and 1962 £100 Revenue, St. Helena 1903 set to 2/- overprinted 'SPECIMEN', etc.; chiefly fine

£1,000-2,000

Collections and Ranges - *contd.*



Ex 307

x307 ★

A mint accumulation on Hagner pages and stockcards including Great Britain, Australia 1915-27 £1, Bechuanaland 1888 £1, Burma 1937 15r., British Honduras 1922 MCA \$5, Bermuda 1924-32 12/6d. with plate number, 1938 values to 10/-, Canada with Jubilee values to \$1, Hong Kong with 1938-52 \$10 green and violet and \$10 violet and blue, Lagos 1904-06 MCA 10/-, Natal £5 overprinted 'SPECIMEN', Northern Rhodesia 1925 20/-, Newfoundland 1933 \$4.50 on 75c. pair, St. Helena 1922 15/-, Sarawak 1918 set to \$1, Tanganyika 1917-21 10r., etc.; a useful range in mixed condition, plenty good to fine

£1,000-2,000



Ex 308

x308

1937-52 mint and used collection housed in a green King George VI Stanley Gibbons album, filled to varying degrees throughout with plenty of full and part sets including Ascension 1938 set with values to 10/- mint, Barbados with 1950 set to \$2.40 mint, Basutoland 1938 set to 10/- mint/used, Bechuanaland 1938 set to 10/- mint/used, Cayman Islands 1950 set to 10/- mint, Cyprus with 1938-51 set to £1 mint/used, Falkland Islands with 1938 set to £1 mint/used, India and States, Malayan States with most States with values to \$1 or \$5, K.U.T with 1938 set to £1, New Zealand, North Borneo, Somaliland with 1938 set to 5r. mint, Swaziland with 1938 set to 10/-, etc.; chiefly good to fine

£1,000-2,000



Ex 309

x309 ★

A mint selection on Hagner pages and stockcards including Antigua 1921 MCA set to £1, Basutoland 1933 set to 10/-, Bermuda 1918 MCA 5/- (2) and 10/-, Cayman Islands 1912-20 to 10/- (2) and 1921-26 set to 10/-, K.U.T. 1935-37 set to £1, Malaya Straits Settlements 1904-10 \$25 (2) and \$100 all overprinted 'SPECIMEN' and 1922 Malaya-Borneo Exhibition \$1 variety **no hyphen**, Nauru with 1916-23 Bradbury Wilkinson 2/6d. with **double overprint**, **one albino** and 1924-28 set to 10/-, Nyasaland, Rhodesia with 1898-1908 1d. horizontal pair variety **imperforate** (with B.P.A. Certificate) and 1910-13 Double Head 10/-, St. Vincent; a little toning in places though a good and useful group in chiefly fine condition

£1,500-2,500



Ex 310

x310

A mainly mint selection on a Hagner page including Bermuda 1938-52 5/- and 10/-, Cyprus 1881 CC 1pi. used block of four, Gibraltar with 1903 CA set to £1, 1904-08 MCA £1 with plate number used on piece, 1906-11 MCA set to 8/- overprinted 'SPECIMEN', K.U.T. 1922-27 £5 used, Rhodesia with 1898 1d. vertical pair variety **imperforate between**, 1910-13 perf. 14 7/6d mint and £1 used, Tanganyika 1917 G.E.A. 20r. and 50r. overprinted 'SPECIMEN', Trinidad & Tobago 1913 MCA to £1 and Script 1922-28 to £1, a nice range in good to fine condition

£1,500-2,000

Collections and Ranges - *contd.*



Ex 311

x311 ★

1860-1925 a mint range on album pages with Great Britain Officials including Inland Revenue 1882 6d. grey, Government Parcels with values to 1888 9d. dull purple and blue and 1902 1/- green and carmine, Army Officials to 6d., Admiralty Officials to 3d., etc., Cyprus 1880 to 1/- green, 1882-86 CA set to 12pi., 1894-96 CA set to 45pi., Gibraltar 1886 Bermuda overprint set of seven to 1/-, 1886 CA set to 1/-, 1904-08 MCA with values to £1, 1912-24 MCA values to £1, 1925-32 Script to £1, Ireland with 1922 Dollard overprints to 10/-, Thom overprints to 10/-, Malta with 1860 no watermark ½d. buff, 1863 CC ½d. (4), later sets with values to 10/-, Self-Government sets, etc.; a lovely selection in chiefly good to fine condition

£1,500-2,500



Ex 312

x312 ★

A range of mint singles and sets from across the Empire on stockcards (50) including Bahamas with 1863 1d. brown-lake with B.P.A. Certificate, British East Africa, Brunei with 1895 set to \$1, Falkland Islands, Fiji, Grenada with sets and multiples, Hong Kong with King George V values to \$1 and QEII values to \$20 with watermark varieties, etc., Labuan, Malaya, Morocco Agencies, Nauru, North Borneo including Red Cross sets, Nyasaland with values to £1, South Africa including multiples, Transjordan with sets and Postage Dues, Zanzibar, etc., a good selection in chiefly good to fine condition

£2,000-3,000



Ex 313

x313 ★

A mint selection of mostly K.G.V, on Hagner pages which includes Bahrain 1933-37 set to 5r., Basutoland 1933 set to 10/-, Bechuanaland 1932 set to 10/-, Bermuda 1918-22 2/- to £1, Cook Islands Postal Fiscals to £1, Grenada 1913-22 to 10/- (2 shades), Ireland 1925-28 Seahorse 2/6d. to 10/-, Jaipur 1936-46 Service set to 1r. with additional 4a., Jamaica 1919-21 set to 10/-, New Guinea 1931 Air set to £1 with part imprint in lower margin, New Zealand with 1906 Christchurch set of four, Pictorials to 3/-, Postal Fiscals set to £1, Nigeria 1936 set to £1, North Borneo 1931 Anniversary set to \$5, Northern Rhodesia 1925-29 set to 20/-, Straits Settlements 1936-37 to \$5, St. Helena 1922-27 Badge set to 10/- (3d. *torn flag* variety), 1934 Centenary set to 10/-, St. Vincent 1904-11 set to £1, Sudan 1935 Gordon set, Swaziland 1933 set to 10/- and Trinidad and Tobago 1904-07 set to £1; a good, clean collection, mostly light mounted mint with some unmounted mint

£2,000-4,000

Collections and Ranges - *contd.*



Ex 314

x314 ★

A selection of mint ex-auction lots on stockcards with Bahamas, Barbados, British East Africa, British Guiana, British Honduras, Brunei, Cameroon with German overprint set, Cayman Islands including 1907 Surcharges, Ceylon including Officials to 2/-, Cyprus, Falkland Islands with 1898 2/6d. and 5/-, 1904-12 set to 5/-, 1912 set to £1, 1929-37 set to £1, Malaya, Mauritius with sets to 10r., Malta, Nyasaland with B.C.A. overprint set to 10/-, Rhodesia with 1913 Admirals to £1, South Africa with booklet panes, St. Helena, etc., a huge range in chiefly good to fine condition

£4,000-6,000



Ex 315

x315 ©

1935-52 large collection of sets from across the British Empire perforated "SPECIMEN" housed in an album, huge level of completeness for the period and including 1940-51 Pitcairn Islands set, hinged to small pieces of card, part to large part original gum, Catalogue value in excess of £50,000

£10,000-15,000

Collections and Ranges - *contd.*



Ex 316

x316 ★

A mainly mint selection on a Hagner page and on stockcards including Great Britain 1897 £1 used, Basutoland 1933 and 1938 sets, Bermuda 1938 set to £1, Cayman Islands with values to 10/-, Ceylon 1863 CC 2d. ochre strip of three, 1912 set to 20r., Gibraltar 1904 £1 black and red, Malaya Straits Settlements 1912-23 MCA \$25 'SPECIMEN', Mauritius 1859-61 6d. blue, Prince Edward Island 1872 3c. horizontal pair **imperforate between**, Sarawak 1899 2c. on 12c. red on pale rose with **inverted surcharge**, Turks Islands, etc., several with Certificates; a useful range in good to fine condition

£1,200-1,600

END OF THE SALE

At the time of printing, the Terms and Conditions for Buyers for sales taking place after 1 January 2021 are not yet available.

This sale's Terms and Conditions for Buyers will be published on our website after 1 January 2021.

SPINK

LONDON
1666

Sale Venue:

The Royal Philatelic Society London
15 Abchurch Lane
2nd Floor
London EC4N 7BW
tel: +44 (0)20 7563 4121/4005
fax: +44 (0)20 7563 4037
email: auctionteam@spink.com

WRITTEN BIDS FORM

This form should be sent or faxed to the Spink auction office in advance of the sale. References for new clients should be supplied in good time to be taken up before the sale. Bids received later than one hour before the start of the sale may not be processed.



NAME _____

ADDRESS _____

POSTCODE _____

69 Southampton Row, Bloomsbury,
London WC1B 4ET
tel: +44 (0)20 7563 4108/4005
fax: +44 (0)20 7563 4037
email: auctionteam@spink.com

YOU CAN ALSO BID IN REAL TIME ON SPINK LIVE.
PLEASE DOWNLOAD SPINK LIVE APP FROM THE
APP STORE OR VISIT WWW.SPINK.COM,
REGISTER AND LOG INTO THE SALE.

SALE TITLE

**The 'Lionheart' Collection of Great Britain
and British Empire - Part XIV**

DATE

**Wednesday 20 January 2021
at 2.00 p.m.**

CODE NAME

LIONHEART

SALE NO.

21011

I request Spink, without legal obligations of any kind on its part, to bid on the following Lots up to the price given below. I understand that if my bid is successful the Purchase Price will be the sum of the final bid and Buyer's Premium as a percentage of the final bid, any VAT chargeable, also postage charge and a fee for paying by card. The Rate of Buyer's Premium is 20% of the final hammer price of each lot. I understand Spink will pursue me for payment for any successful bid. In addition, I understand and consent that Spink may share my personal details relating to the default with other auction houses and live bidding platforms to protect themselves from such defaults.

All bids shall be treated as offers made on the Terms and Conditions for Buyers printed in the catalogue. I also understand that Spink provides the service of executing bids on behalf of clients for the convenience of clients and that Spink will not be held responsible for failing to execute bids. If identical commission bids are received for the same Lot, the commission bid received first by Spink will take precedence. Please note that you will not be notified if there are higher written bids received.

**BIDDERS PLEASE NOTE OUR EXTENSION CLAUSES IN OUR TERMS AND CONDITIONS FOR BUYERS
PLEASE PRINT CLEARLY IN BLOCK LETTERS AND ENSURE THAT BIDS ARE IN STERLING**

Lot Number (in numerical order)	Price Bid £ (excluding Buyer's Premium)

Lot Number (in numerical order)	Price Bid £ (excluding Buyer's Premium)

Lot Number (in numerical order)	Price Bid £ (excluding Buyer's Premium)

☐ Please hold my purchased lots for collection

TEL. HOME _____ TEL. OFFICE _____

FAX _____ E-MAIL _____

SIGNATURE _____ VAT NUMBER _____

☐ I agree to receive notifications about Spink auctions, news and events via email and direct mail

☐ I agree to receive marketing notifications related only to the following categories (please select as appropriate)

**Autographs / Banknotes / Bonds & Shares / Books / Coins / Comics / Handbags / Jewellery / Maps / Medals / Stamps / Watches /
Whiskies & Spirits / Wine / Corporate News & Events**

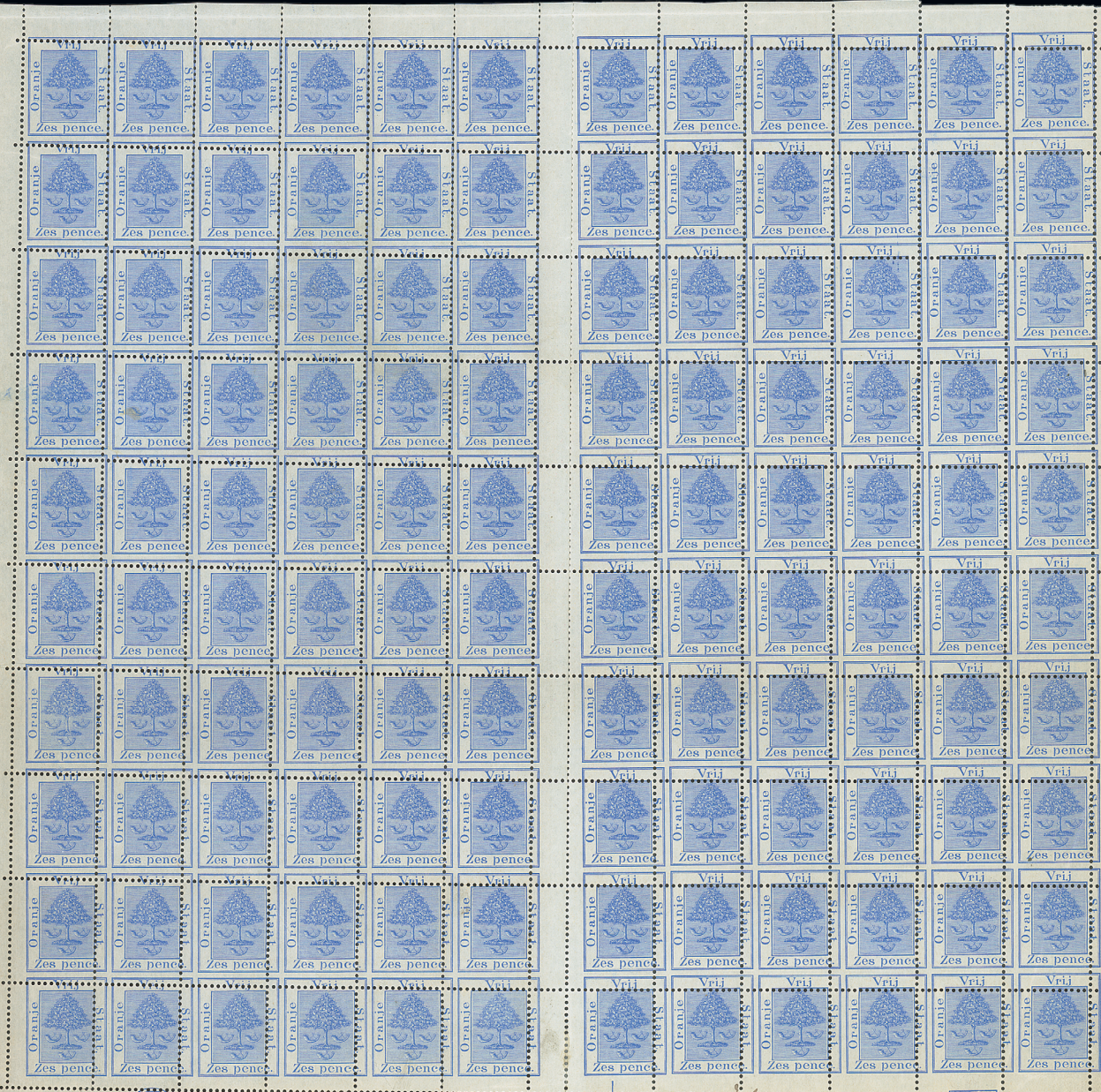
We will use the personal information you provide to us as set out in our privacy notice available at www.spink.com/privacy-policy

Continued ...

Wednesday 20 January 2021
at 2.00 p.m.

PLEASE PRINT CLEARLY IN BLOCK LETTERS AND ENSURE THAT BIDS ARE IN STERLING

[illegible]



1

3000796

10 OCT. 96

2

£25



SPINK

WHERE HISTORY IS VALUED

FOUNDED
1666

STAMPS COINS BANKNOTES MEDALS BONDS & SHARES AUTOGRAPHS BOOKS
WINE & SPIRITS HANDBAGS COLLECTIONS ADVISORY SERVICES SPECIAL COMMISSIONS

69 Southampton Row, Bloomsbury, London WC1B 4ET
www.spink.com