



BRITISH COMMONWEALTH

— Part Two —

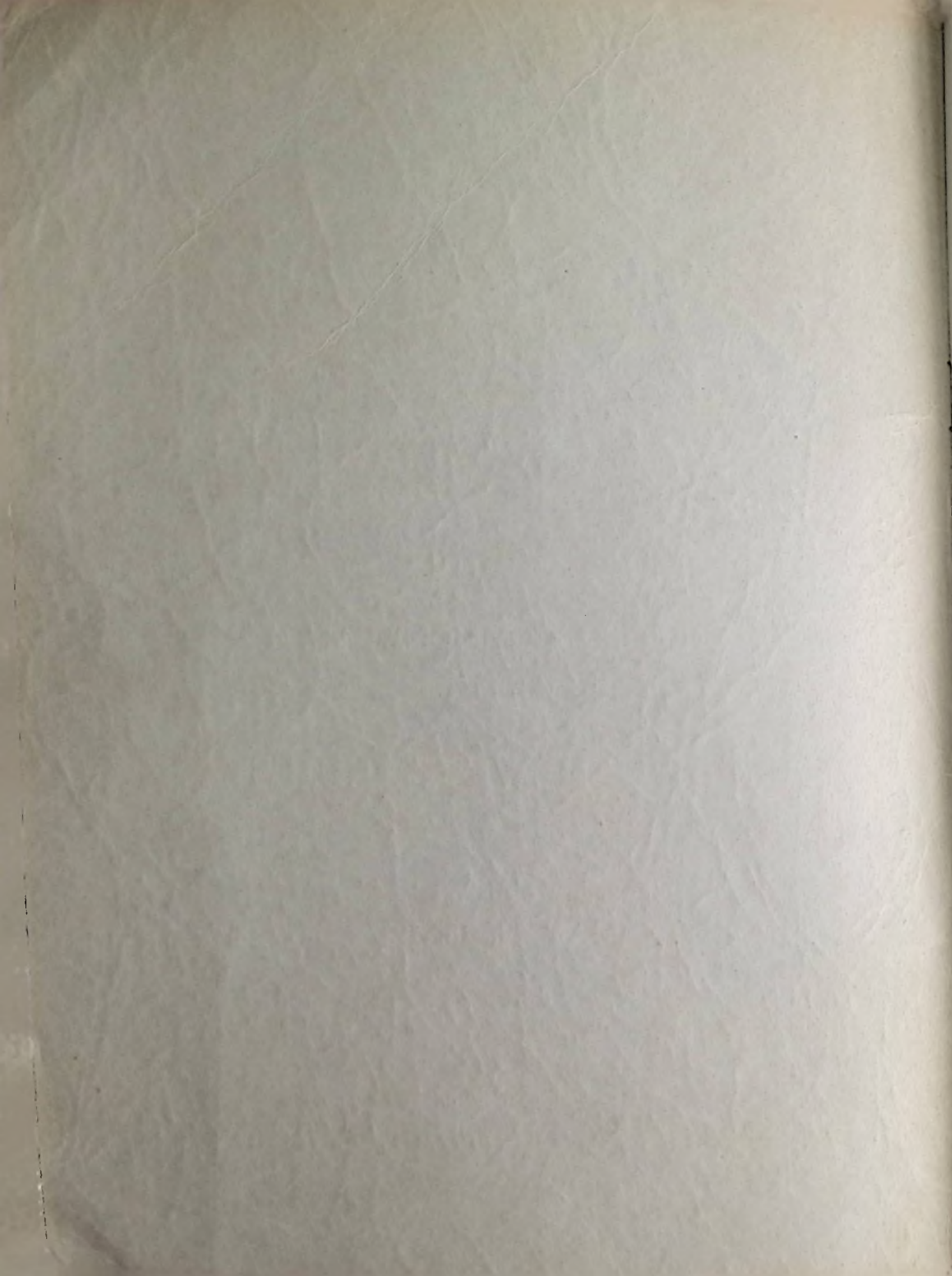
BRITISH WEST INDIES

Tuesday and Wednesday

MAY 14, 15, 1957



*H. R. Harmer, Inc.*





*H. R. Harmer, Inc.*

*presents*

THE

*Alfred H. Caspary*

COLLECTION OF

BRITISH COMMONWEALTH

Part Two

BRITISH WEST INDIES

with

BRITISH GUIANA

British Honduras and Falkland Islands

Sold by Order of the Executor of His Estate



Unreserved Sale by Auction on

Tuesday and Wednesday

MAY 14, 15, 1957

AT 2 P. M.

in the AMBASSADOR HOTEL  
(Park Avenue and 51st Street)

*H. R. Harmer, Inc.*

*International Stamp Auctioneers*

*6 West 48th Street*

*New York 36, N. Y.*

*Bernard D. Harmer, Fred T. Buck, Licensed Auctioneers*

Phone: PLaza 7-4460

::

Cables: Harmersale, New York

— SALES No. 1089, 1090 —

## CONDITIONS OF SALE

---

### Bidding

- I.—All bids are per lot as numbered in the catalogue. The right is reserved to withdraw any lot prior to sale, to divide a lot, or to group two or more lots.
- II.—The highest bidder shall prevail. Should any dispute arise between bidders the decision of the auctioneer as to the successful bidder and the reoffering or resale of the lot under dispute shall rest entirely on the judgement of the auctioneer. Title shall remain in the Executor of the Will of Alfred H. Caspary until payment is received and delivery made to the buyer. The auctioneer shall regulate the bidding and reserves the right to refuse any bid believed by him not to be made in good faith.

### Payment For Purchases

- III.—**Floor Bidders.** The name and address of the buyer of each lot shall be given to the auctioneer immediately following the sale of such lot. Payment of the whole purchase price, or such part thereof shall be made by the floor buyer in such manner as the auctioneer may determine.
- IV.—**Mail Bidders.** Successful mail-bidders will be notified of lots allocated to them and must remit before the lots are sent. Delivery to successful mail bidders will be at the addresses indicated on their bid sheets. Persons known to us, or who furnish satisfactory references, may, at our option, have their stamps forwarded to them for immediate payment. A minimum charge of 25c will be made for mailing and insurance.

### Authenticity

- V.—Each lot is sold as genuine but when in the opinion of any competent authority acceptable to H. R. Harmer, Inc., the lot is declared otherwise, the purchase price will be refunded in full, **provided that such claim is received by H. R. Harmer, Inc. within a period of twenty-one days from the date of the auction.** Where an opinion is not expected within twenty-one days, notification to H. R. Harmer, Inc. within this period, that a reasonable extension of time is required, is satisfactory.
- VI.—Any lot, description of which is incorrect, is returnable only within three days of receipt. All disputed lots must be returned intact, as received. Lots containing five or more stamps are not returnable at any time. No lots may be returned by purchasers who have had an opportunity to examine them before the sale. Stamps described as having defects are not returnable on account of their condition. Stamps cannot be returned on account of centering when such stamps are illustrated.

### New York City Sales Tax

- VII.—The New York City Sales Tax (3%) is payable by buyers liable to tax who accept delivery in the City. Non-residents of New York City are not liable to the tax if their purchases are mailed to any address outside New York City.
- VIII.—The placing of a bid shall constitute acceptance of the foregoing conditions of sale.



## GENERAL INFORMATION

---

1. **Conditions of Sale.** See opposite.
  2. **Bidding by Mail.** Clients unable to attend the auction personally are invited to fill in their offers on the enclosed Bid Form. Bids will be executed by the auctioneer without charge. Clients unknown to us are requested to forward a deposit or references with their bids.
  3. **Floor buyers.** Attention is particularly drawn to Condition of Sale #III. Full payment or a substantial deposit will be required, immediately following the purchase of any lot, from a person unknown to us.
  4. **Delivery of lots.** Lots may be cleared during or immediately following the sale from H. R. Harmer personnel in the lobby of the Auction Room. In the case of mail-bidders, lots will be sent by Registered mail, insured, failing contrary instructions.
  5. **Exhibition of Lots.** Opposite first page of descriptions.
  6. **Out-of-town viewing.** Due to this complete auction being on exhibition in London, there will be no postal viewing in the United States.
  7. **Valuations.** Available during exhibition in New York and London. Valuations of lots of particular interest sent on receipt of stamped addressed card or envelope.
  8. **Lists of Prices Realized.** Available 10 days after auction 75c (6/-) post paid or \$10 (£3.15) the series of sixteen auctions. City Sales Tax extra to New York residents.
  9. **Catalogue numbers and prices.** Catalogue numbers and prices from Scott Catalogue, Vol. I, 1957. Also Stanley Gibbons (London), Part I, British Empire (1957).
- Symbols:**      ★ Unused; ○ Used; ☐ Block of four;  
                    ⊞ Block larger than four; △ On piece; ☒ On cover

### "Last Minute Bids"

Bids can be telephoned to a private line at the Ambassador Hotel  
— MU 8-1274 — from 1 p.m. on each sale day.

# Foreword

## The Caspary British West Indies

By Sir John Wilson, Bart.

*Keeper of the Royal Philatelic Collection*

There is no doubt that the receipt of a catalogue of part of the Caspary collection provides the greatest thrill for a collector since the disposal of the Ferrari collection in the twenties.

Neither Ferrari nor Caspary made a practice of exhibiting his stamps, and so both accumulations, until catalogued, provided for the average philatelist unknown treasure chests.

There possibly the similarity ceases. Ferrari had to have everything appearing in the catalogue and his collections were in consequence reasonably complete, though collectors could only discover this by inspecting large and important remainder lots of collections. Caspary boasted that except for small sections of United States stamps he had no collections at all, but merely a showing of the stamps which he liked. To a certain extent this was an exaggeration as he had bought intact certain important collections of entire countries, and had added to them, and in those cases he had pretty complete representation. I do not remember Caspary telling me that he ever bought any specialized West Indies collection intact or any collection of British Guiana, British Honduras or the Falkland Islands, and this section therefore of his material represents mostly his own picking, although Mr. Robert Walser must have had some nice pieces in the group and these Caspary absorbed.

In his early days as a collector Caspary intended to be more general in his approach than later he chose to be, and he accumulated some ordinary material, which belongs to this period. He did not start buying on a large scale until

after the end of the 1914-18 war. Generally he waited for material to be offered to him, but he visited Paris for the early Ferrari sales, and most of his big items in for instance British Guiana were bought then, though the famous cover with the 4c and 8c circulars was a Duveen piece. He never really liked the circulars and used to say that they looked too bad and generally were in too bad shape to warrant acquisition. He liked the early lithographed ship types and wisely bought the best he could find.

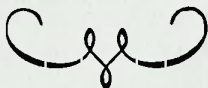
The Bermuda Circulars which are just about as bad in appearance as the Guianas appealed to him more, but that was because he had a special affection for Postmasters' stamps.

As a group he liked most of the British West Indies stamps, and had a special urge to collect them on covers which is largely a very difficult task if one ignores philatelic covers.

The late Major T. Charlton Henry who was a keen student, and who went through the West Indies section with Caspary was quite amazed to find such a collection, and was possibly most impressed by the Trinidad lithographs which somehow specially appealed to Caspary, even the late poor impressions.

Caspary always laughed at himself being described as a philatelist because he did not study stamps as some people do and he by no means liked all stamps. Apart from modern stamps in which he took no interest, he really didn't care about stamps which were not rare, or difficult to collect in the way he had them.

He had a nose for knowing what was good, and he didn't mind checking his hunches with specialist friends who knew scarcity. What there is in any group may not be a complete collection, but it is always a very select portfolio of philatelic securities. His flair was remarkable not only for the noted rarities but for buying certain things in blocks of four and putting them aside when it is only the specialist who knows that they do not generally come that way. The block of four 1d on half 6d St. Vincent is probably unique, but I suspect there are quite a few other blocks in the collection of extreme rarity.





# — EXHIBITION OF LOTS —

---

## — ENGLAND —

LONDON — Offices of H. R. Harmer, Ltd.

41 New Bond Street, London

Wednesday, Thursday, Friday, May 1, 2, 3 ..... 10 a. m. to 5 p. m.

## — UNITED STATES —

AT 6 WEST 48th STREET, NEW YORK

Tuesday through Friday, May 7-10 ..... 9:30 a. m. to 5 p. m.

Saturday, May 11 ..... 9:30 a. m. to 1 p. m.

Monday, May 13 ..... 9:30 a. m. to 5 p. m.

Mornings of Sale, May 14, 15 ... 9:30 a. m. to noon

FIRST DAY OF SALE  
TUESDAY, MAY 14th, 1957

AT TWO O'CLOCK

IN THE TRIANON ROOM

of the

AMBASSADOR HOTEL

— Park Avenue and 51st Street, New York City —

---

SALE No. 1089

---

ANTIGUA

1862 Unwatermarked

- 1 ★ 6p blue green. O. g., wrinkles, fine ..... (1) 45.00  
*See illustration on page 8*

1863 Small Star

- 2 ★ 1p lilac rose, 1p vermilion, 6p blue green. O. g., negligible traces of age  
stains, fine ..... (2-4) 28.00  
3 ★田 1p lilac rose, block of 4. O. g., very fine but for small thinnings (2) 30.00+  
4 ○ 1p lilac rose, horiz. strip of 3; fine to very fine ..... (2) 12.00+  
5 ★ 6p blue green; 1873-79 CC perf. 14 4p, 6p. O. g., fresh, fine to very fine  
(4, 10, 11) 41.50

1873 CC Watermark, Perf. 12½

- 6 ★ 1p vermilion, 6p blue green. O. g., 6p a few irregular perforations at  
left; fine ..... (6, 7) 42.00

1873-79 CC Watermark, Perf. 14

- 7 ★ 2½p red brown. Unused, fine ..... (9) 37.50  
*See illustration on page 8*

1882-86 CA Watermark

- 8 ★ 2½p red brown, 4p blue. Latter o. g.; fine to very fine ..... (13, 15) 25.00  
9 ★田 2½p red brown, block of 4. O. g., top left stamp slightly thinned in  
wmk, scarce block ..... (13) 40.00+  
*See illustration on page 8*  
10 ★ 4p blue, 1sh violet. O. g., fine to very fine ..... (15, 17) 32.50



1



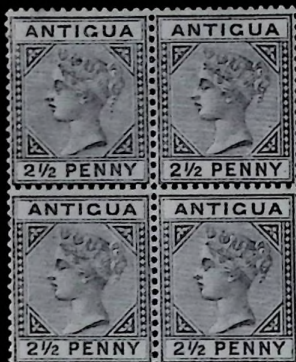
7



16



20



9



11



12



23



22



24



25



26



27



- 11 ★田 4p blue, block of 4. O.g., faintly creased; attractive and scarce block (15) 60.00+  
*See illustration opposite*
- 12 ★田 1sh violet, block of 4. O.g., fresh, very fine; scarce ..... (17) 70.00+  
*See illustration opposite*
- 13 ★田 6p deep green, block of 4. O.g., perforations touch at left, fine (19) 24.00+

## 1862 to 1886

- 14 ○ 9 diff. and extra copy of #2; few tiny faults, generally fine (2-4, 6, 9, 10, 13, 15, 19) 60.25
- 15 ★ Balance of country, 21 stamps, majority o.g., incl. S. G. 29a; 2 blks of 4; few small faults, generally fine ..... (betw. 3 and 20) 68.30

## BAHAMAS

## 1859 Imperforate

- 16 ○ 1p pale lake. Margins all sides, tiny touch up or possible repair at right, very fine appearance; very rare ..... (1) 75.00  
*See illustration opposite*
- 17 ★ 1p dark lake, horiz. pair with top sheet margin. O.g., very fine (1a) 12.00+
- 18 ★田 1p dark lake, block of 4. O.g., very fine ..... (1a) 24.00+
- 19 ★田 1p dark lake, block of 9 with bottom sheet margin. O.g., fresh, very fine ..... (1a) 54.00+
- 20 ○ 1p dark lake. Neat "AO5" cancellation, very fine ..... (1a) 50.00  
*See illustration opposite*

## 1861 Issue

## Rough Perforated 14 to 16

- 21 ★ 1p lake. Unused, centered to bottom left, fine ..... (2) 35.00
- 22 ★ 1p lake, horiz. pair. O.g., fresh, perforations cut in at left, one stamp negligible trace of thinning, attractive and scarce pair ..... (2) 70.00+  
*See illustration opposite*
- 23 ★ 4p rose. Part o.g., fine ..... (3) 125.00  
*See illustration opposite*
- 24 ★ 6p gray lilac. Unused, well centered, partly severed by scissors, fine and attractive copy ..... (4) 140.00  
*See illustration opposite*

## Perforated 11½ to 12

- 25 ★ 1p lake. O.g., fresh, almost centered, very fine ..... (5) 40.00  
*See illustration opposite*
- 26 ★ 1p lake. O.g., trace of crease at top, fine ..... (5) 40.00  
*See illustration opposite*
- 27 ★ 1p carmine lake. O.g., severed by scissors at left but perforations intact, fine ..... (5) 40.00  
*See illustration opposite*
- 28 ○ 4p rose. Well centered, fine ..... (6) 30.00

## Perforated 13

29 ★	1p brown lake. Unused, partly severed by scissors, nice color ..... <i>See illustration opposite</i>	(8)	35.00
30 ★	1p brown lake. Unused, almost very fine ..... <i>See illustration opposite</i>	(8)	35.00
31 ○	1p brown lake (2), 1p carmine lake, one brown lake showing paper-maker's wmk.; fine to very fine .....	(8, 8a)	30.00+
32 ★	4p rose. O. g., bright color, fine and rare ..... <i>See illustration opposite</i>	(9)	175.00
33 ○	6p violet. Nice color, very fine .....	(10)	17.50

## 1862-67 CC Watermark, Perf. 12½

34 ★	4 diff. and 2 listed shades; o. g. or unused, averagely fine (11-14, 13a, 14a)	58.00
35 ★田	1p lake, block of 4. O. g., fresh, some extra margin at top, very fine (11)	20.00+
36 ★田	4p rose, block of 4. O. g., good color and fresh, diagonal crease in upper right corner, attractive block ..... <i>See illustration opposite</i>	(13) 40.00+
37 ○	4p rose lake, horiz. strip of 3. Unnoticeable tiny faults, neat well centered strip .....	(13a) 15.00+
38 ○田	4p rose lake, horiz. block of 5, very fine and scarce ..... <i>See illustration opposite</i>	(13a) —
39 ★田	6p dark violet, bottom left corner block of 4. O. g., fresh, corner stamp thin spot, otherwise very fine .....	(14) 32.00+
40 田	6p dark violet and 1882 perf. 12 4p rose. Tied on regist. envelope to Germany, small age stain on cover and stamps, fine ..... (14, 25)	10.00+
41 ★	1sh green. Unused, well centered, 2 perforations a trifle short at top, fine ..... <i>See illustration opposite</i>	(15) 100.00

## 1875 CC Watermark, Perf. 14

42 ★田	1p vermilion, block of 4. O. g., fresh, centered, very fine despite minor bend .....	(16) 14.00+
43 ★	4p rose, with right sheet margin. O. g. and fresh, centered; exceptionally fine ..... <i>See illustration opposite</i>	(18) 35.00+
44 ★田	4p rose, block of 4 with top sheet margin. O. g., centered, tiny age stains on gum, practically invisible from the front, otherwise very fine; scarce block ..... <i>See illustration opposite</i>	(18) 140.00+
45 ★	4p deep rose. O. g., fresh, centered, exceptionally fine ..... <i>See illustration opposite</i>	(18a) 35.00
46 ★田	4p deep rose, block of 4. O. g., fresh, excellent color and nicely centered, right pair slight vert. bend. Choice and rare block ..... <i>See illustration opposite</i>	(18a) 140.00+

## 1882 CA Watermark, Perf. 12

47 ★	4p rose. O. g., fresh, very fine but for slight thinnings .....	(25) 22.50
48 ★田	4p rose, block of 4. Nearly full o. g., fresh, reinforced at left center; very fine block ..... <i>See illustration opposite</i>	(25) 90.00+





29



30



32



41



43



36



38



44



46



48



45



51



52



53



55



## 1862-98

- 49 ★ 7 diff. and 3 shades, unused or o.g., few faults, good to fine (11, 11a, 16, 19, 20, 22-24) 42.50
- 50 ○ 12 diff., all used, few tiny faults, good to very fine (11-15, 18, 20-25) 60.00

## 1883 Provisional

- 51 ★ 4p on 6p violet. Unused, very fine ..... (26) 60.00  
*See illustration on page 11*
- 52 ★田 4p on 6p violet, block of 4. O.g., and fresh, well centered, one perforation short in center row of top pair. A choice block of the greatest rarity ..... (26) 240.00+  
*See illustration on page 11*
- 53 ★ 4p on 6p violet, invert. surcharge. O.g., fresh, very fine and very rare (26a) 250.00  
*See illustration on page 11*

## 1884-90

- 54 ★○ 1p to 5sh compl., o.g. or unused, also same used; few tiny faults, generally fine ..... (27-31) 24.65
- 55 ○ £1 brown. Centered circular LONG CAY. F.I., May 9, '89 cancellation, very fine; scarce ..... (32) 20.00+  
*See illustration on page 11*

## BARBADOS

## Plate Proofs On Wove Paper

- 56 P田 ½p black, block of 4. One stamp negligible minor foxing; fine to very fine ..... (44P) —
- 57 P田 3p black, upper left corner block of 4. One stamp trace of foxing; very fine ..... (38P) —  
*See illustration opposite*
- 58 P田 4p black, block of 4, very fine ..... (47P) —
- 59 P田 1sh black, upper left corner block of 4; negligible traces of foxing, very fine ..... (9P) —
- 60 P 5sh black, horiz. pair, very fine ..... (43P) —  
*See illustration opposite*

## 1852 Imperforate

## Blued Paper

- 61 ★ ½p deep green. O.g., fresh, very fine ..... (1) 16.50
- 62 ★ ½p deep green, horiz. pair. O.g., fresh, large margins, extremely fine (1) 33.00+  
*See illustration opposite*
- 63 ★ ½p deep green, horiz. pair. O.g., fresh, deep color, very fine with margins all round ..... (1) 33.00+  
*See illustration opposite*



57



60



62



63



72



83



94



95



107



115



125



130



132

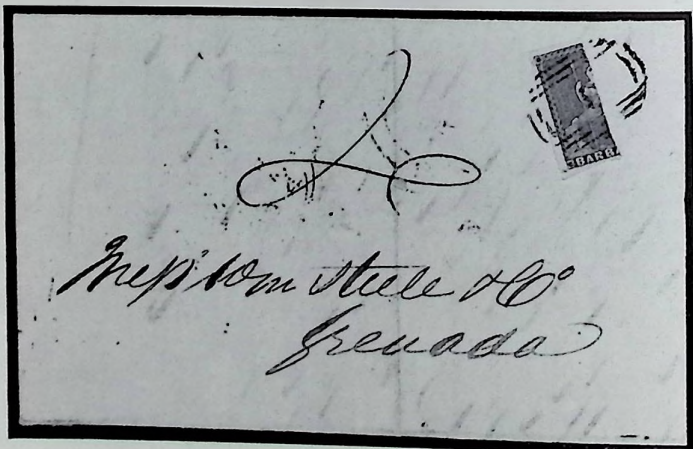


- 64 ○ ½p deep green. Large margins, very fine ..... (1) 17.50
- 65 ○ ½p deep green, horiz. pair. Margins all sides, mostly very large, very fine but for faint crease ..... (1) 35.00+
- 66 ○ ½p yellow green. Lightly cancelled, extremely fine ..... (1a) 13.50
- 67 ○ ½p yellow green (2). One fine, other thinning, fine appearance (1a) 27.00
- 68 ★ 1p blue, single and block of 4, 1p dark blue, horiz. pair. O.g., very fine (2, 2a) 24.50+
- 69 ○ 1p blue (5), nice range of shades. Selected copies, very fine to superb (2, 2a) 20.00+
- 70 ★ 2p slate blue, block of 4. O.g., fresh, extremely fine; S.G. 5a ..... (3) 20.00+
- 71 ★ 2p slate blue, pair and block of 4. O.g., fresh, fine to very fine ..... (3) 30.00+
- 72 ★ 2p grayish slate, horiz. pair. O.g., fresh, extremely fine (S.G. 4a) £24  
*See illustration on page 13*



- 73 ○ 2p grayish slate, horiz. strip of 3. Cancelled by numeral "1". Margins all sides, right stamp scissors cut at bottom. Probably used as 6p and evidently the only known usage of this stamp other than bisected ..... (S.G. 4a)

*See illustration*



- 74 ☒ 2p grayish slate, vert. bisect used as 1p. Well tied by numeral "1" to small, neat backstamped folded letter Barbados, Aug. 21, 1854 to Grenada. Choice cover and very fine; S.G. 4a - £55 ..... (3a) 150.00  
*See illustration*



- 75 ★ 4p brown red, upper right horiz. corner pair with ms. "4d each" in top margin. O.g., very fine but for tiny thinning in left stamp ..... (4) —
- 76 ★田 4p brown red, bottom right corner block of 4. O.g., fresh, part sheet margin right and bottom, very fine ..... (4) 28.00+
- 77 ○ 4p brown red. Extremely fine used ..... (4) 15.00
- 78 ○ 4p brown red. Very fine ..... (4) 15.00
- 79 ○ 4p brown red. Regular cancellation also portion of circular "STEAM-SHIP 20"; very large margins, extremely fine ..... (4) 15.00+
- 80 △ 4p brown red, 1p blue (white paper) and 1859 6p rose red, All 4 margins, fine to very fine. Tied by numeral "1" to nearly compl. cover—front 1859 to Florence, Italy ..... (4, 6, 8) 41.50+

#### White Paper

- 81 ○ ½p deep green, horiz. pair. Small to large margins all round, very fine ..... (5) 20.00+
- 82 ○ ½p deep green, horiz. pair. Large margins, showing portions of adjoining stamps at bottom, right stamp faint vert. crease; very fine pair ..... (5) 20.00+
- 83 ★ ½p yellow green. O.g., margins all sides, very fine; scarce unused (5a) 75.00  
*See illustration on page 13*
- 84 ○ ½p yellow green. Large margins, extremely fine ..... (5a) 10.00
- 85 ○ ½p yellow green. Very fine ..... (5a) 10.00
- 86 ○ ½p yellow green (2). One large margins, both negligible tiny faults (5a) 20.00
- 87 ○ ½p yellow green, horiz. pair. Margins all sides, very fine ..... (5a) 20.00+
- 88 ○ ½p yellow green, vert. pair. Margins all round and showing portion of adjoining stamp at bottom, very fine ..... (5a) 20.00+
- 89 ☒ ½p yellow green, horiz. pair. Margins all sides, fine to very fine. Tied by numeral "1" to small, neat backstamped folded letter Barbados Oct. 6, 1858 to Trinidad. Choice cover ..... (5a) —
- 90 ☒ ½p yellow green, horiz. pair. Margins all sides, natural paper fault at left ending in paper split at top. Tied by numeral "1" to small, neat backstamped cover Barbados, Dec. 21, 1858 to Trinidad ..... (5a) 20.00+
- 91 ★田 1p blue, block of 4. Unused, very fine ..... (6) 16.00+
- 92 ○ 1p blue. Lightly cancelled, huge margins all sides, a lovely copy (6) —
- 93 ★○ 1p blue (9), compr. 5 o.g. incl. pair, others used incl. one on cover to to Dominica; fine to very fine ..... (6) 36.00+

#### 1859 Issue

#### Imperforate

- 94 ★ 6p rose red. O.g., fresh, margins all sides, very fine; scarce ..... (8) 125.00  
*See illustration on page 13*
- 95 ★ 6p rose red. Unused, margins all sides, very large on top and left, very fine ..... (8) 125.00  
*See illustration on page 13*



96

97

- 96 ★ 6p rose red, horiz. pair. Unused, fresh and deep color, very fine. Rare pair ..... (8) 250.00+  
*See illustration*
- 97 ★ 6p rose red, horiz. pair with part sheet margin at left. Unused, fresh, deep color, large margins, extremely fine. Choice and rare pair (8) 250.00+  
*See illustration*
- 98 ○ 6p rose red. Large margins, extremely fine ..... (8) 22.50
- 99 ○ 6p rose red. Margins all sides, very fine ..... (8) 22.50
- 100 ○ 6p rose red. Lightly cancelled, very fine ..... (8) 22.50
- 101 ○ 6p rose red. Very fine despite faint corner crease ..... (8) 22.50
- 102 ○ 6p rose red, part sheet margin at left. Very fine but for faint bend (8) 22.50+
- 103 ○ 6p rose red. Deep color, fine ..... (8) 22.50
- 104 ○ 6p rose red, 1sh brown black. Former wrinkles in top margin, latter faint age stain in corner; otherwise very fine ..... (8, 9) 34.50
- 105 ☒ 6p rose red. Large margins, extremely fine. Tied by numeral "1" to small, neat white envelope Barbados, Febr. 27, 1859 to London. Choice cover ..... (8) —
- 106 ★ 1sh black. O.g., very fine ..... (9) 20.00
- 107 ★ 1sh black, horiz. pair. Unused, large margins, extremely fine ..... (9) 40.00+  
*See illustration on page 13*
- 108 ○ 1sh black. Large margins, extremely fine ..... (9) 12.00
- 109 ○ 1sh black. Margins all sides, very fine ..... (9) 12.00
- 110 △ 1sh black, horiz. strip of 4, margins all round except small place top right, tiny scissors cut bottom left and 1p blue (slightly faulty), on piece in form of a strip ..... (9, 6) 40.00+

## Pin-Perforated 14

- 111 ○ ½p pale yellow green. Perforations show on 3 sides, thin spot, fine appearance ..... (10) 30.00
- 112 ○ 1p blue. Perforations show on all sides, rare thus ..... (11) —
- 113 ○ 1p blue, somewhat similar copy ..... (11) —
- 114 ○ 1p blue (2). Both perforations nearly all round, very fine for these (11) 24.00

## Pin-Perforated 12½

- 115 ○ ½p pale yellow green. Perforations on 2½ sides, almost very fine (12) 35.00  
*See illustration on page 13*
- 116 △ ½p pale yellow green. Tied on piece, fine but for slight faults .... (12) 35.00

## 1861 Issue

## Clean-Cut Perforated 14 to 16

- 117 ★ ½p dark blue green (2). One o.g., fine to very fine ..... (13) 20.00

## Rough Perforated 14 to 16

- 118 ★ ½p(3), 1p(5), incl. pair. O.g. or unused, fine ..... (15, 16) 45.50  
 119 ★ ½p to 1sh, 5 diff. O.g., fine to very fine ..... (15-17, 20, 21) 42.00  
 120 ★ ½p to 1sh, similar lot but ½p is yellow green ..... (15a, 16, 17, 20, 21) 42.00  
 121 ★ 3 diff.; 1871 1p, 2 diff. O.g., faults, mostly very small  
 (15a, 17, 20a, 29, 33) 60.50  
 122 ★田 ½p deep green (2), blocks of 4, diff. shades. O.g., fresh, very fine (15) 28.00+  
 123 ★田 ½p deep green, horiz. block of 6. O.g., fine but for tiny age stains (15) 21.00+  
 124 ★田 ½p yellow green, horiz. block of 10 with right sheet margin. O.g., perforations cut in, fresh block ..... (15a) 35.00+  
 125 ★ ½p yellow green, imperf., horiz. pair. O.g., fresh, very fine; S. G. 22a - £18 ..... (15a imp.) —

*See illustration on page 13*

- 126 ★田 1p blue, block of 4. O.g., one stamp light age stain in top margin, otherwise very fine ..... (16) 28.00+  
 127 ★ 4p rose red, 4p brown red. O.g., fine to very fine ..... (17, 17a) 30.50  
 128 ★ 4p rose red, 4p vermilion. Former o.g., minute age stains, latter unused, tiny thinning, still fine ..... (17, 18) 50.00  
 129 ★ 4p rose red, horiz. pair. O.g., fresh, centered to top, fine to very fine (17) 25.00+  
 130 ★田 4p rose red, block of 4. O.g., fresh, perforations partly touch. Choice block ..... (17) 50.00+

*See illustration on page 13*

- 131 田 4p rose red and 1p blue, fine to very fine. Tied by numeral "1" to small, neat over-all litho advertising envelope Barbados, Febr. 9, 1870 "p. U. S. Packet via St. Thomas" to Annapolis, Nova Scotia .... (17, 16) —  
 132 ★田 4p rose red, imperf., block of 4. O.g., fresh, very fine ..... (17b) 240.00+  
*See illustration on page 13*  
 133 ★ 6p rose red. Some o.g., perforations touch at top, fine ..... (19) 30.00  
 134 ★ 6p rose red. O.g., nice color, a few blunted perforations at top right, fine ..... (19) 30.00  
 135 ★ 6p orange vermilion (4), incl. shades, one with sheet margin. O.g., fresh, fine to very fine ..... (20, 20a) 48.00  
 136 ★ 6p orange vermilion, horiz. pair. O.g., very fine ..... (20) 24.00+  
 137 ★ 6p orange vermilion, horiz. pair. O.g., fresh, bright color, centered to right, fine to very fine ..... (20) 24.00+



## 1871 Large Star Watermark, Rough Perf. 14 to 16

138 ★	½p green, single and horiz. pair. O. g., fine to very fine for these	(24)	36.00+
139 ★	4p dull red. O. g., well centered, very fine for this rare stamp <i>See illustration opposite</i>	(26)	125.00
140 ★	1sh black, horiz. pair. O. g., fresh, fine to very fine <i>See illustration opposite</i>	(28)	60.00+

## 1871 Small Star Watermark

## Rough Perforated 14 to 16

141 ★	6p vermilion. O. g., excellent color, perforations touch at right <i>See illustration opposite</i>	(31)	50.00
142 ★	1sh black. Some o. g., very fine	(32)	20.00
143 ★	1sh black, horiz. pair. O. g., fresh, fine to very fine	(32)	40.00+

## Clean-Cut Perforated 14½ to 16

144 ★	1p blue. O. g., fresh, very fine	(33)	20.00
145 ★	1sh black. O. g., almost very fine	(35)	15.00

## Perforated 11 to 13x14½ to 16

146 ★	½p blue green. O. g., fresh, very fine <i>See illustration opposite</i>	(36)	35.00
147 ★	½p blue green. Part o. g., traces of thinnings, fine	(36)	35.00
148 ★	½p blue green. O. g., perforations cut in at left, fine	(36)	35.00
149 ★	4p vermilion. Unused, very fine for this scarce stamp <i>See illustration opposite</i>	(37)	37.50
150 ○	1852-71 11 diff., few tiny faults, generally fine (6, 11, 14, 20a, 24, 26, 28, 30, 32, 34, 37)		80.50
151 ★	1873 3p claret. O. g., fresh, well centered, very fine <i>See illustration opposite</i>	(38)	30.00
152 ★	— 3p claret, horiz. pair. O. g., well centered, tiny age stains practically unnoticeable from the front; scarce pair <i>See illustration opposite</i>	(38)	60.00+

## 1873 Large Star Watermark; Clean-Cut Perf. 14½ to 16

153 ★	½p blue green, o. g., fine	(39)	25.00
154 ★	4p rose red. Part o. g., few blunted perforations at top, fine <i>See illustration opposite</i>	(40)	85.00
155 ★	6p vermilion. O. g., almost very fine <i>See illustration opposite</i>	(41)	60.00
156 ★	6p vermilion. O. g., centered to top left, fine	(41)	60.00
157 ★	6p vermilion, imperf., vert. pair. O. g., fine to very fine	(41a)	45.00
158 ★	1sh black, 2 shades. One o. g., fine to very fine	(42)	30.00
159 ★田	1sh black, block of 4. O. g., perforations touch, attractive block <i>See illustration opposite</i>	(42)	60.00+





139



141



140



146



149



151



154



152



155



166



160



159



161



167



168



172



177



180



## 1873 Small Star Watermark

- 160 ★ 5sh dull rose. O. g., good color, well centered, very fine but for trace of age staining top right ..... (43) 135.00  
*See illustration on page 19*
- 161 ★ 5sh dull rose. Unused, nice color, negligible minute toning in small spot, almost very fine ..... (43) 135.00  
*See illustration on page 19*
- 162 ○ 5sh dull rose. Centered to left, 2 tears at bottom, fine appearance (43) 75.00

## 1874 Large Star Watermark, Perf. 14

- 163 ★ ½p blue green, 2 singles and block of 4. O. g., fresh, block has tiny brownish spot; fine to very fine ..... (44) 27.00+
- 164 ★ 1p blue, 2 singles and block of 4. O. g., perforations partly touch, fine to very fine ..... (45) 42.00+

## 1875 CC Watermark, Perf. 12½

- 165 ★ 4p scarlet. O. g., very fine ..... (47) 25.00
- 166 ★ 6p orange. O. g., almost centered, brilliant color and very fine (48) 70.00  
*See illustration on page 19*
- 167 ★ 6p orange. O. g., nice color, well centered, perforations a trifle irregular at left, very pretty copy ..... (48) 70.00  
*See illustration on page 19*
- 168 ★ 1sh purple. O. g., almost centered, very fine ..... (49) 40.00  
*See illustration on page 19*

## 1875-78 CC Watermark, Perf. 14

- 169 ★ ½p (3, incl. pair), 1p (4, incl. pair). All o. g. except one; fine to very fine ..... (50, 51, 51a) 30.00
- 170 ★田 ½p yellow green, 1p ultramarine, blocks of 4. O. g., fresh, perforations touch on 1p; fine to very fine ..... (50, 51) 32.00+
- 171 ★ 3p violet, 4p rose red. Latter o. g., nice colors, fine ..... (52, 53) 27.00
- 172 ★田 3p violet, block of 4. O. g., fresh, well centered, very fine; scarce block (52) 54.00+  
*See illustration on page 19*
- 173 ★ 4p rose red, 2 singles and horiz. pair. O. g., few tiny faults, fine (53) 54.00



- 174 ★ 4p scarlet, perforation 14x12½. O. g., fresh, almost centered, very fine and very rare ..... (53b) 400.00  
*See illustration*







185

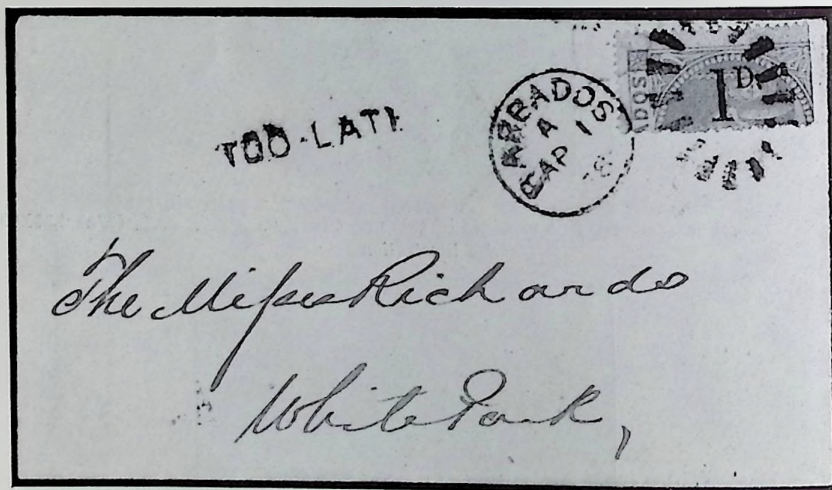
186

- 185 ○ Slanting serif and straight serif, the 2 types se-tenant: 1p on half of 5sh dull rose, unsevered pair, left stamp surcharge with straight serif, right stamp with slanting serif. Oval numeral cancellation; very fine and rare ..... (58, 57)

*See illustration*

- 186 ○ — Similar pair with oval numeral and BARBADOS, March 13, 1878 cancellations. Small tear at left, otherwise very fine ..... (58, 57)

*See illustration*



- 187 ☒ Straight serif: 1p on half of 5sh dull rose, right half, surcharge reading down. Tied by BARBADOS, April 1, 78 duplex to a very small neat white envelope to White Park, bearing "Too Late". Choice and very rare cover ..... (58)

*See illustration*

- 188 ★ 1882-85 ½p to 5sh, compl. set incl. 1p rose; 1892 ½p on 4p, single and pair, one without hyphen; 4p slate unused, others o.g., fine to very fine ..... (60-69, 61a, 69a)

58.85

# BERMUDA

## 1848-54 POSTMASTER STAMPS

Prepared and issued by W. B. Perot, Postmaster of Hamilton



- 189 ○ 1p black on bluish, dated "1849", cut circular. Fresh and very fine. Excessively rare, only four copies believed to exist (X1) 3,000.00  
*From the "Ferrari" and "Hind" Collections*  
*See illustration*



- 190 ○ 1p red on bluish, dated "1853", cut circular. Fresh and very fine but for thin spot. Excessively rare, only 4 copies believed to exist (X2) 3,000.00  
*See illustration*

- 191 ☒ 1851 Stampless envelope to St. Johns, Newfoundland, bearing on front crowned double circular "PAID AT HAMILTON BERMUDA", and on back HAMILTON, April 2, 1851 postmark (same handstamp as used for Perot's Provisionals), both clear strikes in red. Cover also bears Halifax and St. Johns backstamps; very fine and desirable cover



## GENERAL ISSUES

## 1865 CC Watermark

- 192 ★ 6p brown lilac. Unused, very fine but for small closed tear ..... (3) 30.00

## 1874



193

194

- 193 ★ 3p on 1sh green. O. g., fine ..... (8) 60.00  
*See illustration*
- 194 ★ 3p on 1sh green. O. g., fine ..... (11) 60.00  
*See illustration*

## 1875

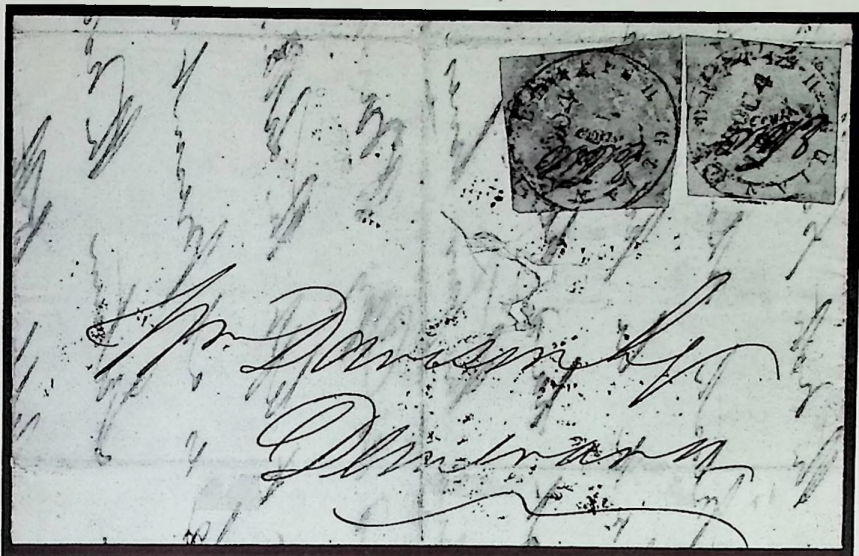
- 195 ★ 1p on 2p blue. O. g., fine but for one short perforation at bottom (12) 50.00
- 196 ★ 1p on 1sh green. O. g., almost very fine ..... (14) 17.50
- 197 ★ 1865-1903, balance of country, 21 stamps, incl. 3 shades; mostly o. g., fine clean coll. on album pages ..... (1, 1a, 2, 3A-7, 15-24, 29) 59.40


## BRITISH GUIANA

## 1850 "Cottonreels"



- 198 △ 4c black on orange, initialed "E. D. W.", cut square. Margins all round except circular frame slightly cut at left. Tied on piece by DEMERARA, Nov. 1851 (lifted and affixed by hinge). Clear impression, good color and fresh, minute thinnings. Of great rarity, especially cut square ..... (2) 4,000.00  
*See illustration*



- 199  4c black on orange and 8c black on green, both initialed "E. D. W." and cut square. The 4c fresh, circular frame cut in 2 places, the 8c gum penetration, margins all round except circle cut in small place. On small, neat folded letter (slightly faulty in center) Berbice, Nov. 3, 1851 to Demerara. Cancelled on arrival DEMERARA, Nov. 04, 1851, the 4c tied. One of the most outstanding British Guiana covers known, probably unique with the 2 diff. cut square stamps (2, 4) 7,500.00+  
*See illustration*



- 200 ○ 4c black on yellow, pelure paper, without signature, cut octagonally. Margins all round, DEMERARA, Nov. 29, 1850 cancellation. Clear impression and very fine for this great rarity. Only a very few copies exist without initials. Normal initialed pelure paper stamp priced cut square \$4500 and cut to shape \$850 ..... (3)  
*See illustration*
- 201 ○ 8c black on green, without signature, cut octagonally. Margins all round, clear DEMERARA, Aug. 13, 1850 cancellation. Very fine but for slight brownish staining. Very rare without signature. Normal initialed stamp priced cut square \$3500 and cut to shape \$600 ..... (4)  
*See illustration*



- 202 ○ 12c black on blue, initialed "E. D. W.", cut square. Margins practically all round, DEMERARA cancellation, fresh and very fine despite minute thinning at top ..... (5) 750.00  
*See illustration opposite*
- 203 ○ 12c black on pale blue, initialed "E. D. W.", cut square. Margins practically all round, very large on 3 sides, BERBICE cancellation. Negligible tiny natural paper flaw; fresh, clear impression, very fine and very rare ..... (5) 1,500.00  
*See illustration opposite*
- 204 ○ 12c black on pale blue, initialed "E. D. W.", cut octagonally. Margins all round, mostly large. Good color and fresh, clear DEMERARA, July 29, 1851 cancellation, very fine. Priced cut square \$1500 (5) —  
*See illustration opposite*
- 205 ○ 12c black on indigo, initialed "E. D. W.", cut square. Margins nearly all round, very lightly cancelled. Fresh, good color, clear impression, tiny natural paper flaw, a very fine copy of this rarity ..... (5b) 1,200.00  
*See illustration opposite*

## 1852 Lithographed by Waterlow &amp; Sons

- 206 ★田 1c black on magenta, block of 4, the two left stamps type I, others type II. O.g., slightly faulty, some surface disturbances touched up and repair in center of bottom margin outside design. Attractive block of utmost rarity, only one other unused block exists ..... (6) 4,000.00+  
*From the "Ferrari" Collection*  
*See illustration opposite*
- 207 ○ 1c black on magenta, type I. DEMERARA, July 17, 1855 cancellation. Large margins, brilliant color and absolutely faultless. A marvelous stamp and very rare in this beautiful condition ..... (6) —  
*See illustration opposite*
- 208 ○ 1c black on magenta, type I. Clear DEMERARA, April 25, 1855 cancellation. Huge margins, showing portion of adjoining stamp at right. Tiny thinning in bottom margin outside design, trace of surface disturbance, still an exceptional copy. S. G. £150 ..... (6) 200.00  
*See illustration opposite*
- 209 △ 1c black on magenta, type I. Tied to piece by DEMERARA cancellation. Huge margins all sides, fresh and of good color, faintly creased. Still an outstanding copy. S. G. £150 ..... (6) 200.00+  
*See illustration opposite*
- 210 ○ 1c black on magenta, type I. DEMERARA, July 31, 1855 cancellation. Fresh, large margins and very fine. S. G. £150 ..... (6) 200.00  
*See illustration opposite*
- 211 ○ 1c black on magenta, type I. Clear DEMERARA, Aug. 17, 1855 cancellation. Margins all sides, fresh and very fine. S. G. £150 ..... (6) 200.00  
*See illustration opposite*
- 212 ○ 1c black on magenta, type I. Clear DEMERARA, July 31, 1855 cancellation. Good even margins all sides, fresh, unnoticeable faint horiz. crease, very fine for this stamp. S. G. £150 ..... (6) 200.00  
*See illustration opposite*
- 213 ○ 1c black on magenta, type I. Margins all sides, very large on 3. Surface slightly touched up and traces of thinnings. Very attractive copy ..... (6) 200.00  
*See illustration opposite*
- 214 ○ 1c black on magenta, type II. Huge margins, lightly cancelled, surface touched up, very fine appearance ..... (6) 200.00  
*See illustration opposite*



202



203



204



205



207



206



208



210



211



209



212

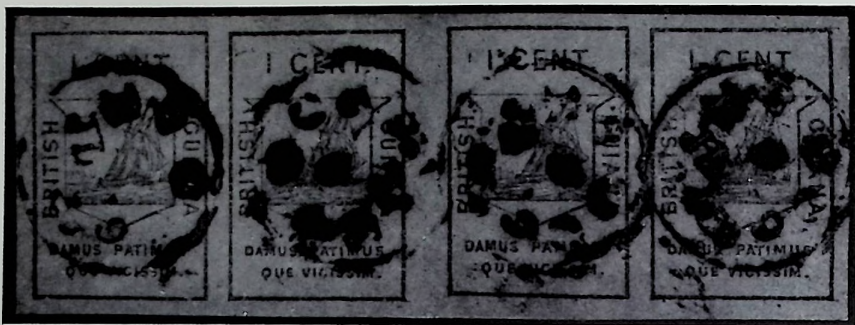


213



214





- 215 ○ 1c black on magenta, horiz. strip of 4, compr. types I+II+I+II. Very large margins all sides, good color and fresh, attractively cancelled though a trifle heavy in places. Slightly thinned in top center, also tiny thinning in left stamp. As a whole a wonderful strip of the greatest rarity ..... (6)

*From the "Ferrari" Collection*

*See illustration*

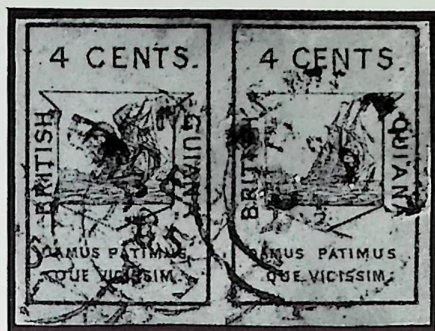


216

217

218

- 216 ○ 4c black on blue, type I. Margins all sides, very large at left and bottom, touched up surface disturbance, very fine appearance ..... (7) 400.00  
*See illustration*
- 217 ○ 4c black on blue, type I. Margins 3 sides, partly close at bottom but frame line intact, usual slight rubs but generally nice color and attractive copy ..... (7) 400.00  
*See illustration*
- 218 ○ 4c black on blue, type I. Tied on piece by DEMERARA. Very large margins all sides, usual surface disturbances. A desirable copy of this difficult stamp ..... (7) 400.00  
*See illustration*



- 219 ○ 4c black on blue, horiz. pair, left stamp type I, other type II. Margins all sides, very large on 3, brilliant color. Right stamp tiny surface disturbance and pin hole. A magnificent pair of the greatest rarity, probably as fine as it exists. S. G. £350 as singles ..... (7) 800.00+  
*From the "Ferrari" Collection*  
*See illustration*

#### 1853-59 Lithographed Issue

Without line above value

1c vermilion (S. G. 11)



- |       |  |        |     |     |
|-------|--|--------|-----|-----|
| 220   | 221  | 222    | 223 | 224 |
| 220 P | 1c reddish brown, probably proof. Large even margins, extremely fine (8P) —            |        |     |     |
|       | <i>From the "Ferrari" Collection</i>   |        |     |     |
|       | <i>See illustration</i>  |        |     |     |
| 221 ○ | 1c vermilion. Deep color, large margins and superb ..... (8)                           | 150.00 |     |     |
|       | <i>See illustration</i>  |        |     |     |
| 222 ○ | 1c vermilion. Fresh color, light BERBICE cancellation, large margins, superb ..... (8) | 150.00 |     |     |
|       | <i>See illustration</i>  |        |     |     |
| 223 ○ | 1c vermilion. Margins all sides, mostly large, very fine ..... (8)                     | 150.00 |     |     |
|       | <i>See illustration</i>  |        |     |     |
| 224 ○ | 1c vermilion. Nice color, lightly cancelled, margins all sides, very fine ..... (8)    | 150.00 |     |     |
|       | <i>See illustration</i>  |        |     |     |



- 225 ○ 1c vermilion. Large even margins, fresh and extremely fine ..... (8) 150.00  
*See illustration opposite*
- 226 ○ 1c vermilion, horiz. pair. Very large margins all sides, excellent color.  
 Left stamp minute fault only visible in fluid. Still a wonderful pair  
 (8) 300.00+  
*See illustration opposite*
- 227 ○ 1c vermilion, horiz. pair. Large margins, cancellation a trifle heavy in  
 places, very fine ..... (8) 300.00+  
*See illustration opposite*
- 228 ○田 1c vermilion, block of 4. Very large margins all sides, showing traces of  
 adjoining stamps at bottom. Lower pair slightly creased and small  
 brownish spot. A very attractive block of the greatest rarity .... (8) 600.00+  
*See illustration opposite*

For 4c without line above value (Scott #9; S. G. 18a, 20a) see lots #239, 245 and 246

#### With line above value

#### 1c red (S. G. 12-16)

For description of the various types see Stanley Gibbons Catalogue

- 229 ○ 1c red, type A. Very large even margins, lightly cancelled, horiz. crease  
 and 2 small thinnings, very fine appearance. S. G. 12 ..... (10) 150.00  
*See illustration opposite*
- 230 ○ 1c red, type B. Deep color, lightly cancelled, margins all sides, fresh  
 and extremely fine. S. G. 14 ..... (10) 150.00  
*From the "Ferrari" Collection*  
*See illustration opposite*
- 231 ○ 1c red, type B. Very large margins, thinned and horiz. crease, ex-  
 tremely fine appearance. S. G. 14 ..... (10) 150.00  
*See illustration opposite*
- 232 ○ 1c red, type C. Deep color, fresh, attractively cancelled, margins all  
 sides, very fine. S. G. 16 ..... (10) 150.00  
*See illustration opposite*
- 233 ○ 1c red, vert. pair, both type A. Very large margins all sides, neat DEM-  
 ERARA, March 20, 60 cancellation. Upper stamp unnoticeable paper  
 split on back and tiny thinning, lower stamp extremely fine and the  
 pair most attractive. S. G. 12 ..... (12) 300.00+  
*See illustration opposite*
- 234 ○田 1c red, block of 4, upper pair type B, bottom pair type A. Light DEM-  
 ERARA, Febr. 24, 60 cancellation, margins all round except very  
 small place at right bottom. Small thinnings and left pair vert.  
 crease. An attractive block of the greatest rarity. S. G. 12, 14 (10) 600.00+  
*See illustration opposite*
- 235 1.⊗ 1c red, horiz. strip of 4, all type C. Partly touched at left and top, latter  
 caused mainly by irregular alignment, otherwise margins all round,  
 2 stamps full margined. Tied by DEMERARA, April 13, 60 to very  
 small, neat nearly compl. envelope to New Amsterdam, bearing  
 Berbice backstamp. Very rare cover. S. G. 16 ..... (10) 600.00+  
*See illustration opposite*





226



225



227



228



233



234



229



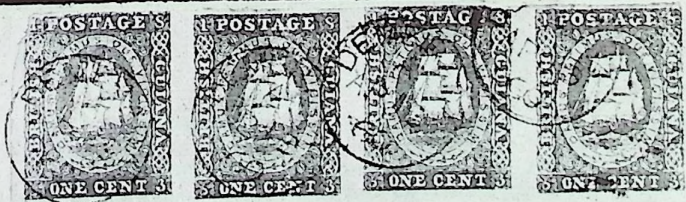
230



231



232




235

Miss Margaret Alves





- 236  1c red, vert. strip of 4, compr. types A+B+A+C. Margins all sides, showing portion of 2 adjoining stamps at right. Nice color and fresh, negligible tiny pin hole in top margin not touching design, superb. Tied by DEMERARA, March 27, 60 to small, neat folded letter to George Town. A glorious strip and cover, probably the most outstanding entire existing of this issue. S. G. 12, 14, 16 ..... (10)

*From the "Ferrari" Collection  
See illustration*

#### 4c blue



- |       |   |         |
|-------|---|---------|
| 237   | 239   | 238     |
| 237 ★ | 4c blue. Unused, large margins, shows traces of ink offset on back, almost very fine. S. G. 20 ..... (11)   | 125.00  |
|       | <i>See illustration</i>   |         |
| 238 ★ | 4c blue, white line above value partly retouched. Unused, fine. S. G. 20a - £80 ..... (11 var.)   | 125.00+ |
|       | <i>See illustration</i>   |         |
| 239 ★ | 4c blue, horiz. strip of 4, the left stamp without line above value (retouched). O. g., deep color, margins all sides, slight faults incl. faint age stain on right stamp. An attractive and very rare strip. S. G. 18, 18a - £270+ ..... (11, 9) | 525.00+ |
|       | <i>From the "Ferrari" Collection<br/>See illustration</i>   |         |



- 240 ○ 4c blue. Clear **BERBICE**, July 9, 1857 cancellation. Large margins, extremely fine ..... (11) 65.00  
*See illustration*
- 241 ○ 4c pale blue. Negligible trace of vert. crease, very fine ..... (11) 65.00  
*See illustration*
- 242 ○ 4c blue. **DEMERARA**, Feb. 27, 1854 cancellation, large margins, unnoticeable faint vert. crease, still very fine ..... (11) 65.00  
*See illustration*
- 243 ○ 4c pale blue. Very large margins, very fine but for tiny thinning (11) 65.00  
*See illustration*
- 244 ○ 4c blue. **BERBICE**, 1854 cancellation. Slightly touched part of top, fine (11) 65.00  
*See illustration*
- 245 ○ 4c blue, horiz. pair, right stamp without line above value (retouched). **DEMERARA**, Nov. 18, 1853 cancellation, large margins, superb. S. G. 18, 18a - £85+ ..... (11, 9) 145.00+  
*See illustration*
- 246 △ 4c blue, horiz. pair, right stamp without line above value (retouched). Tied to piece by **DEMERARA**, Oct. 16, 1857. Large margins 3 sides, partly close but clear at right, vert. creases, attractive pair. S. G. 19, 20a - £67 ..... (11, 9) 145.00+  
*See illustration*
- 247 田 Reprint (1865) 1c red, block of 4. O. g., fresh and fine ..... (8 Repr.) —



## 1860 Framed Numerals in Corners

- 248 ★ 4c blue. Unused, fresh, margins all sides, large on 3, very fine ..... (12) 225.00  
*See illustration opposite*
- 249 ○ 4c blue. Margins all sides, small thinning and corner crease ..... (12) 100.00  
*See illustration opposite*
- 250 △ 4c blue. Tied on small piece by neat DEMERARA, June 1, 60. Large margins, extremely fine. Very pretty piece ..... (12) 100.00+  
*See illustration opposite*
- 251 ○ 4c blue, horiz. pair. Margins all sides, fine to very fine ..... (12) 200.00+  
*See illustration opposite*
- 252 ○ 4c blue, block of 4. Margins all sides, slight faults. A very attractive block of the greatest rarity ..... (12) —  
*See illustration opposite*

## 1856 Type-set Local Issue

- 253 ★ 4c black on magenta, initialed "E. D. W.", cut square. Unused, fresh, margins all sides, vert. crack which has been strengthened on the back. Attractive copy, unpriced unused Scott or S.G. and of great rarity, only a very few unused exist ..... (14) —  
*See illustration opposite*



- 254 ○ 4c black on magenta, initialed "E. T. E. D.", cut square. Very large margins, neatly cancelled, good color and fresh, exceptionally fine. Very rare in this condition. S.G. to £350 ..... (14) 600.00  
*From the "Ferrari" Collection*  
*See illustration*
- 255 ○ 4c black on magenta, initialed "E. D. W.", cut square. Margins all sides, very large on 3, neatly cancelled. Slight faults in margin clear off design. Very attractive copy ..... (14) 600.00  
*See illustration opposite*
- 256 ○ 4c black on magenta, initialed "E. D. W.", cut octagonally. Deep color, large margins, tiny thinning. A very desirable copy of this rarity ..... (14) 600.00  
*See illustration opposite*
- 257 ○ 4c black on magenta, initialed "E. D. W.", vert. pair, cut square. Cancelled DEMERARA, Febr. 22, 1856, the earliest recorded date of this issue. Huge margins all sides, good color and fresh. Vert. crease and tiny abrasion in center clear of design. Only one or possibly two other pairs believed to exist ..... (14) 1,200.00+  
*From the "Ferrari" Collection*  
*See illustration opposite*
- 258 ☒ 4c black on magenta, initialed "C. A. W.", cut octagonally. Margins all round, negligible abrasions at top and tiny tear outside design. On small, neat blue envelope to Mahaicony. Cancelled by DEMERARA, March 24, 1856, not tied but postmark repeated on the back. Very rare cover ..... (14) 600.00+  
*See illustration opposite*



248



249



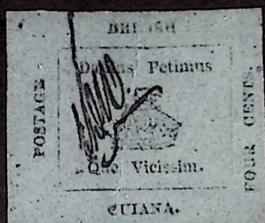
250



251



252



253



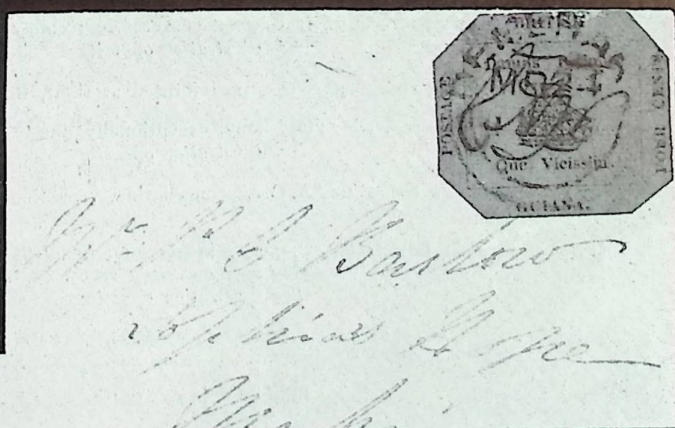
256



255



257



258





259

260

- 259 ○ 4c black on ROSE CARMINE (S.G. 24a). Initialed "E.D.W.", cut square. Margins all sides, very large on 3, DEMERARA, Nov. 13, 1856 cancellation, very fine. Unlisted Scott and unpriced S.G. Excessively rare, especially cut square ..... (14 var.)  
*See illustration*
- 260 △ 4c black on blue, initialed "E.D.W.", cut square. Margins all sides with sheet margin at bottom. Tied on piece, circular B.G.E.C. cancellation, dated Oct. 23, 1856. Good color and fresh. One of the finest, if not the finest copy known of this classic rarity ..... (15) 4,000.00+  
*From the "Ferrari" Collection*  
*See illustration*

#### Lithographed Issues - Wide spacing between value and "Cents"

1860-61 Thick Paper, Perf. 12

- 261 ★ 1c brown red. O.g., fresh, well centered, extremely fine ..... (17) 35.00  
*See illustration opposite*
- 262 ★ 1c brown red. O.g., fresh, reperfected at right, fine appearance (17) 35.00
- 263 ○ 1c brown red. Nice "fat" copy, exceptionally fine ..... (17) 22.50+  
*See illustration opposite*
- 264 ○ 1c brown red. Blue "A.O.3." cancellation, very fine but for tiny fault (17) 22.50
- 265 ★ 1c pink, horiz. pair. O.g. and brilliant fresh, negligible tiny traces of thinnings. A very fine pair and very rare ..... (18) 300.00+  
*See illustration opposite*
- 266 ★ 2c orange, showing papermaker's wmk. O.g., centered slightly to bottom right, very fine ..... (19) 14.00+
- 267 ★ 8c rose. O.g., minute thinnings, fresh and fine ..... (20) 25.00



- 268 ★ 12c gray. O.g., fresh, very fine ..... (21) 40.00  
*See illustration*
- 269 ★ 12c gray, diff. shade and showing papermaker's wmk. O.g., fresh and fine ..... (21) 40.00+  
*See illustration*
- 270 ★ 24c green. O.g., fresh, well centered, negligible pin head size trace of thinning. A very fine copy of this rarity ..... (22) 140.00  
*See illustration*
- 271 ○ 1860-62, 12 stamps, compr. #18, 19, 20, 21(3), 27(2), 23, 25, 27 and 33; incl. shades, "5c" cancellation; majority with faults, good to fine 143.00

#### 1862 Thin Paper

##### Perforated 12

- 272 ★ 1c brown. O.g., fine ..... (23) 45.00  
*See illustration*
- 273 ★ 1c black, 2c, 8c, 12c(3); 1860 4c. O.g., some slight faults (mostly creases), attractive copies ..... (24-27, 44A) 67.00

##### Perforated 12½ and 13

- 274 ★ 1c (6, incl. block of 4), 2c(2), 8c. Mostly o.g., fine to very fine (29-31) 43.00
- 275 ★ 12c lilac. Unused, small thinning and tiny pin hole, still fine ..... (32) 40.00
- 276 ★ 24c green. Unused, partly severed by scissors, slightly thinned and perforations touch ..... (33) 35.00

##### Perforation 10

- 277 ★ 12c gray lilac, right sheet margin copy. O.g., small defect in top center (34) 35.00



## 1862 Type-set Provisional Issue

*Printed locally in sheets of 24 (6x4). Although rouletted, separation was often done by scissors. Copies with full roulettes are therefore rare and command high premiums over the catalogue price which is for average copies. As the sheets were not rouletted on the outside, marginal copies (Pos. 2-5, 7, 12, 13, 18, 20, 23) with full roulettes always have one straight edge and the 4 corner stamps (Pos. 1, 6, 19 and 24) always two straight edges.*

## "Beetle" Type Frame

- 278 ★ 1c black on rose, Pos. 8 (S. G. 116). Unused, roulettes show on all sides, traces of stains and small thinnings ..... (35) 150.00  
*See illustration opposite*
- 279 ○ 1c black on rose, upper left corner copy, Pos. 1, showing wrong ornament at left (S. G. 116c). Excellent color, full roulettes, negligible tiny fault at right, still an exceptional copy ..... (35) 100.00+  
*See illustration opposite*
- 280 ○ 1c black on rose, Pos. 2 (S. G. 116). Full roulettes, slight faults, fine appearance ..... (35) 100.00  
*See illustration opposite*
- 281 ○ 1c black on rose, Pos. 3 (S. G. 116). Full roulettes, good color, very fine but for tiny thinning at top ..... (35) 100.00  
*See illustration opposite*

## Pearls Type Border

- 282 ○ 1c black on rose, Pos. 18 (S. G. 118). Lightly cancelled, full roulettes, very fine but for tiny thinnings ..... (36) 125.00  
*See illustration opposite*
- 283 △ 1c black on rose, bottom left corner copy, Pos. 19 (S. G. 118). Tied on piece, full roulettes, exceptionally fine; very rare in this condition ..... (36) 125.00+  
*See illustration opposite*

## Grapes Type Frame

- 284 ○ 1c black on rose, Pos. 22, showing "1" instead of "I" in "GUIANA" (S. G. 121b). Fresh, roulettes show on left and right, very fine (37) 150.00+  
*See illustration opposite*

## "Beetle" Type Frame

- 285 △ 2c black on yellow, Pos. 3 (S. G. 117). Tied on piece, full roulettes, fresh and of good color, an exceptional copy ..... (38) 65.00+  
*See illustration opposite*
- 286 ○ 2c black on yellow, Pos. 8 (S. G. 117). Roulettes on all 4 sides, good color and fresh, superb. Very rare in this condition ..... (38) 65.00+  
*See illustration opposite*

## Pearls Type Frame

- 287 ○ 2c black on yellow, Pos. 16, showing unlisted variety italic "S" in "CENTS" (S. G. 119 var.). Roulettes show on 3 sides, slight thinnings, attractive copy ..... (39) 75.00+  
*See illustration opposite*

## Grapes Type Frame

- 288 ○ 2c black on yellow, Pos. 21 (S. G. 121). Full roulettes, fresh, very fine but for minute thinnings ..... (40) 125.00  
*See illustration opposite*



278



279



280



281



282



283



284



285



286



287



288



289



290



291



292



293



294



295



296



297



298

*More**W. H. Pamphill & Co.*



**"Treffs" Type Frame**

- 289 ○ 4c black on blue, Pos. 18 (S. G. 123). Full roulettes, thin spot, very fine appearance ..... (41) 100.00  
*See illustration on page 39*

**"Quatrefoils" Type Frame**

- 290 ○ 4c black on blue, Pos. 8 (S. G. 125). Full roulettes, cloudiness in paper and tiny "pin" hole, both natural, fresh and very fine; very rare, only 2 in sheet ..... (42) 250.00  
*See illustration on page 39*

- 291 ★ Without inner lines. 4c black on blue, bottom left corner copy, Pos. 19, showing variety "1" for first "I" in "BRITISH" (S. G. 124b, unpr.) Unused, full roulettes, fresh and fine ..... (42a) 175.00  
*See illustration on page 39*

- 292 ○ Without inner lines. 4c black on blue, Pos. 20, showing unlisted variety wrong ornament at top (S. G. 124 var.). Dated GEORGETOWN postmark, full roulettes, very fine ..... (42a) 125.00+  
*See illustration on page 39*

**Shell Type Border**

- 293 ○ 4c black on blue, upper left corner copy, Pos. 1, showing 3 ornaments invert. or sideways at bottom (S. G. 122). Full roulettes, fresh and extremely fine ..... (43) 85.00+  
*See illustration on page 39*

- 294 ○ 4c black on blue, Pos. 2 (S. G. 122). Full roulettes, extremely fine (43) 85.00  
*See illustration on page 39*

- 295 ○ 4c black on blue, Pos. 2 (S. G. 122). Roulettes show on left and bottom, very fine ..... (43) 85.00  
*See illustration on page 39*

- 296 ○ 4c black on blue, Pos. 8, showing unlisted variety italic "S" in "CENTS" (S. G. 122 var.). Roulettes on all 4 sides, trace of thinning at top, still exceptionally fine ..... (43) 85.00+  
*See illustration on page 39*

- 297 ○ 4c black on blue, Pos. 10, showing ornament missing at right (S. G. 122b, £35). Roulettes show on all 4 sides, very lightly cancelled, exceptionally fine ..... (43) 85.00+  
*See illustration on page 39*

- 298 ☒ 4c black on blue. Pos. 5 (S. G. 122). Full roulettes, extremely fine. Tied by circular B. C. A. G., Jan. 2, 1863 to small, neat (somewhat fragile) backstamped cover to Georgetown. Great cover rarity ..... (43) —  
*See illustration on page 39*

**Lithographed Issues — Narrow spacing between value and "Cents"**

- 299 ★ 1860 Perf. 12 4c blue (2), one thick, other thin paper, latter showing clear horiz. stitch wmk. o.g., fine ..... (44, 44A) 32.50+  
 300 ○ 1860-76, 10 stamps, all used, compr. #44, 48(2), 59, 63, 67 (red), 68, 70 and 71; the pair and one #48 on same piece; few small faults, generally fine ..... 47.50

## 1863 Perforated 12½ and 13

- 301 ★ 1c (horiz. pair), 2c(3), 4c, 8c; o.g., 4c small thinning, otherwise fine to very fine ..... (45-48) 36.50
- 302 ★ 1c, block of 4; perf. 10 1c, pair and vert. block of 6; 2c, horiz. block of 6. O.g., some slight faults ..... (45, 50, 51) 44.00+
- 303 ★田 2c orange, 4c blue, blocks of 4, each with sheet margin one side. O.g., centered to bottom left, fine to very fine ..... (46, 47) 38.00+

## 1866 Perforated 10

- 304 ★ 1c to 12c, compl. set. Unused, fine to very fine for these ..... (50-54) 40.50
- 305 ★田 1c black, 1c gray black, 2c, blocks of 4. O.g., one 1c block natural paper fold, fine to very fine for these ..... (50, 51) 28.00+
- 306 ★ 4c blue, single and pair. O.g., diff. shades, fine ..... (52) 21.00+
- 307 ★ 4c blue, corner block of 4. O.g., part sheet margins top and left, fresh, usual perf. irregularities ..... (52) 28.00+
- 308 ★ 8c rose, 2 shades. O.g., fine to very fine ..... (53) 27.00
- 309 ★ 8c rose, 2 contrasting shades. O.g., fine ..... (53) 27.00
- 310 ★ 8c rose, horiz. pair. O.g., fresh, very fine ..... (53) 27.00+
- See illustration on page 42*
- 311 ★田 12c pale lilac, block of 4. O.g., fresh, perforations somewhat ragged at right, otherwise very fine; rare block ..... (54) 60.00+
- See illustration on page 42*

## 1875 Perforated 15

- 312 ★ 1c, single and block of 4, 2c, single. The block o.g., few tiny faults, otherwise fine to very fine ..... (58, 59) 27.00+
- 313 ★田 4c blue, block of 4. O.g., well centered, oil stains on back which do not show on face. Very attractive and rare block ..... (60) 140.00+
- See illustration on page 42*
- 314 ★ 4c blue, block of 4. O.g., thinnings in top corners, bottom pair is very fine; rare block ..... (60) 140.00+
- See illustration on page 42*
- 315 ★田 4c blue, block of 4. O.g., slight age stains and minor faults ..... (60) 140.00+
- 316 ★ 8c rose. O.g., well centered, fresh and extremely fine ..... (61) 20.00
- 317 ★ 8c rose. Unused, almost very fine ..... (61) 20.00
- 318 ★田 8c rose, block of 4. O.g., fresh, centered to top right, negligible minor imperfections, otherwise very fine; rare block ..... (61) 80.00+
- See illustration on page 42*
- 319 ★ 12c lilac. Unused, severed by scissors, perforation tips trimmed at bottom ..... (62) 50.00
- See illustration on page 42*

## 1863 Perforated 12

- 320 ★ 24c; perf. 12½ to 13 6c(2), 48c. O.g., one 6c straight edge at bottom; good copies ..... (63, 64, 66) 48.50





310



311



313



319



314



318



325



326



328



330



327



329



331



332



334



335

## 1863 Perforated 12½ to 13

321 ★	6c blue, 24c green. O.g., fresh, very fine .....	(64, 65)	22.00
322 ★	6c(3), 24c(2), incl. shades, one 6c dot before "V" of "VIC". O.g., generally fine .....	(64, 65)	54.00+

## 1866 Perforated 10

323 ★	6c blue, 24c green. O.g., usual perforation irregularities, fine to very fine .....	(67, 68)	35.00
324 ★	6c blue, 2 distinct shades. O.g. or part o.g., usual perforations and one vert. crease .....	(67)	35.00
325 ★田	6c blue, block of 4. O.g., usual perforation irregularities and slightly creased; rare block .....	(67)	70.00+
<i>See illustration opposite</i>			
326 ★田	24c green, left sheet margin block of 4. O.g., usual perforation irregularities and bottom left stamp defective in upper left corner. Attractive and rare block .....	(68)	70.00+
<i>See illustration opposite</i>			
327 ★	48c rose, type with period between "P" and "E" of "PETIMUS". O.g., very fine for this stamp .....	(69)	30.00+
<i>See illustration opposite</i>			
328 ★田	48c rose, block of 4, the 2 left stamps type with period between "P" and "E" of "PETIMUS". O.g., fresh, usual perforation irregularities, very fine for this rare block .....	(69)	120.00+
<i>See illustration opposite</i>			

## 1875 Perforated 15

329 ★	6c ultramarine. O.g., fresh and fine .....	(70)	45.00
<i>See illustration opposite</i>			
330 ★田	6c ultramarine, block of 4. O.g., good color and fresh, centered to bottom, perforations clear, top pair faint gum crease. Choice block of great rarity .....	(70)	180.00+
<i>See illustration opposite</i>			
331 ★	24c green. O.g., fresh, very fine .....	(71)	60.00
<i>See illustration opposite</i>			
332 ★	24c green. O.g., fresh, one corner perforation missing, fine .....	(71)	60.00
<i>See illustration opposite</i>			

## 1876 CC Watermark

333 ★	1c to 48c compl., 24c in pair, o.g., mostly fine to very fine (72-79)	37.00
334 ★	4c ultramarine, perf. 12½. O.g., fresh, very fine .....	(74a) 100.00
<i>See illustration opposite</i>		
335 ★	96c bistre. O.g., centered, heavily hinged, very fine appearance (80)	80.00
<i>See illustration opposite</i>		

## 1878 Provisionals

336 ★○	7 diff., some thinnings, good to fine .....	(82-86, 89, 90)	57.00
337 ★	1c on 6c, 2c on 2c. Unused, very fine .....	(84, 91)	35.00
338 ★	1c on 4c, 1c on 6c. Former o.g.; tiny thinnings, very fine appearance .....	(85, 86)	30.00



## 1881 Provisionals

339 ★	Compl. issue of 11 diff. #101 in pair unused (faint crease), others o.g., fine to very fine ..... (92-102)	77.25
340 ★○	9 diff. used, also extra copy of #92 o.g., mostly fine (92-97, 99, 101, 102)	42.00
341 ○□	1c on 48c red, used corner block of 9. Centered to left, fine to very fine (92)	20.25+

## 1882 Type-set Provisionals

342 ★○□	1c, 2c, compl. sheets of 12 (2x6), each compr. 6 type I and 6 type II. The 1c lightly cancelled, other unused, a few tiny faults; fine (103-6)	66.00+
343 ★	— Compl. set without "SPECIMEN". Two thinnings and creases, fine or fine appearance ..... (103a-6a)	70.00

## 1889 Overprinted "Inland Revenue"

344 ★	\$1 green, O.g., fine ..... (124)	40.00
	<i>See illustration opposite</i>	
345 ★	\$2 green. O.g., fresh, superb ..... (125)	25.00
346 ★	\$3 green. O.g., fine ..... (126)	12.00
347 ★	\$4 green, type I. O.g., fresh, perforations touch at right, fine .... (127)	30.00
348 ★	\$4 green, horiz. pair, left stamp type I, other type II. O.g., fresh, centered a fraction to right, very fine and scarce pair ..... (127, 127A)	130.00+
	<i>See illustration opposite</i>	
349 ★	\$4 green, type II. O.g., fresh, almost centered, very fine ..... (127A)	100.00
	<i>See illustration opposite</i>	
350 ★	\$5 green. O.g., fresh and fine ..... (128)	17.50
351 ★○	1882-91, balance of coll., 33 stamps, incl. #103-17, 119-23 and Officials O1 and 7; few shades and dups, varying condition, majority fine	52.00

## BRITISH HONDURAS

## 1865 Unwatermarked

352 ★	1p, 6p, 1sh, compl. set. O.g., average centering, 6p and 1sh each one short perforation ..... (1-3)	42.50
-------	---	-------

## 1872-73 CC Watermark, Perf. 12½

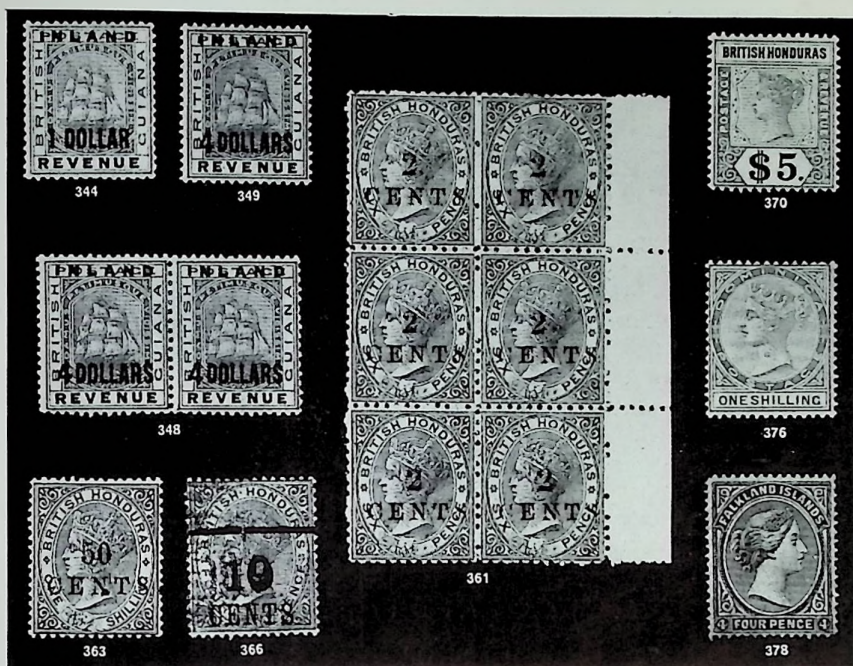
353 ★	3p brown, 6p rose. O.g., fine to very fine ..... (5, 6)	32.00
354 ★	1sh green. O.g., faint age stain, fine ..... (7)	35.00

## 1872-79 CC Watermark, Perf. 14

355 ★	1p, 3p, 4p, 1sh. O.g., fine to very fine ..... (8-10, 12)	44.50
356 ★	6p rose. O.g., centered, very fine but for trace of thinning ..... (11)	37.50

## 1882-87 CA Watermark

357 ★	6p yellow. O.g., small thinning at top, fine appearance ..... (16)	37.50
358 ★	1sh gray. Unused, tiny thinning, very fine appearance ..... (17)	55.00



## 1888 Change of Currency Provisionals

## CC Watermark, Perf. 12½

- 359 ★ 2c on 6p rose. O. g., fresh, very fine ..... (18) 25.00
- 360 ★ 2c on 6p rose. Large part o. g., centered, very fine ..... (18) 25.00
- 361 ★ 2c on 6p rose, vert. block of 6 with right sheet margin. O. g., brilliant fresh, centered and extremely fine. Attractive and rare block (18) 150.00+  
*See illustration*
- 362 ★ CC Wmk., perf. 14, 3c on 2p, CA Wmk., perf. 14, 2c on 50c on 1sh. O. g., very fine ..... (21, 27A) 22.00
- 363 ★ CA Watermark. Perf. 14, 50c on 1sh gray. O. g., negligible traces of ink spots, fresh and fine ..... (25) 90.00  
*See illustration*

## 1891 Provisionals

- 364 E "SIX" in red with bar on 10c on 4p, essay of surch. O. g., very fine (33E) —
- 365 ○ 6c in black on 10c on 4p violet, "6" and bar inverted. Paper split on back, very fine appearance ..... (33a) 100.00
- 366 ○ 6c in red on 4p violet, "6" and bar inverted. Lightly cancelled and fine (34a) 50.00  
*See illustration*



## 1891-99

- 367 ★ Two compl. sets, all o.g. except 6c; mostly fine to very fine  
(38-46, 48-51) 39.25

## 1872-92

- 368 ★ Coll. of 20 stamps, incl. 2 shades, mostly o.g., fine; also incl. not  
counted 2 addit. used copies ..... (4, 13-16, 22-24, 28-37, 47) 41.15

## 1899-1901

- 369 ★ 50c, \$1, \$2. O.g., fine to very fine ..... (54-56) 22.25  
370 ★ \$5 green & black. O.g., fresh, almost centered, very fine ..... (57) 42.50  
*See illustration on page 45*

## DOMINICA

## 1874 CC Watermark, Perf. 12½

- 371 ★ 1p, 6p, 1sh. Last 2 o.g., fine to very fine ..... (1-3) 35.00

## 1877-79 CC Watermark, Perf. 14

- 372 ★ ½p to 1sh, compl. set. All o.g. except ½p; fine ..... (4-9) 53.75

## 1882 Provisionals

- 373 ★ ½p on half of 1p violet, horiz. pair. O.g., fine to very fine ..... (10) 30.00  
374 ★○ Compl. set, first o.g. single, others used pairs; fine to very fine (10-12) 33.00  
375 ★ 1886 ½p on 6p, 1p on 1sh; 1883-88 CA ½p to 6p compl. O.g., mostly  
fine to very fine ..... (13, 15-23) 29.55  
376 ★ 1883-88 CA 1sh deep lilac rose. O.g., almost centered, very fine (24) 45.00  
*See illustration on page 45*  
377 ★○ 1874-86, 5 diff., #12 in pair; also incl. #5a on piece and 2 Revenue  
stamps, last 3 not counted; #7 crease; fine ..... (3, 7, 8, 12, 17) 31.25+

## FALKLAND ISLANDS

- 378 ★ 1878-79 Unwmkd 4p dark gray. Unused, very fine ..... (2) 60.00  
*See illustration on page 46*  
379 ★ 1898 2sh6p, 5sh. O.g., former fine, latter very fine ..... (20, 21) 35.00  
380 ★○ 1878-96, balance of coll., 21 stamps, one pair used, others unused, mostly  
o.g., few minute faults, generally fine on album pages  
(betw. 1 and 18) 67.00

SECOND DAY OF SALE  
WEDNESDAY, MAY 15th, 1957

AT TWO O'CLOCK

IN THE CRYSTAL ROOM

of the

AMBASSADOR HOTEL

— Park Avenue and 51st Street, New York City —

---

SALE No. 1090

---

GRENADA

1861 Unwatermarked

381 ★田 1p green, block of 4. O.g. and brilliant fresh, well centered and very fine ..... (1) 40.00+  
*See illustration on page 48*

382 ★ 6p rose, part o.g., severed by scissors, traces of age stains; 1863-71 small star, rough perf. 6p vermilion, unused, small fault top center (2, 5) 87.50

1863-71 Small Star, Rough Perf.

383 ○ 1p green, horiz. strip of 4, 6p dull red, 2 horiz. pairs; very fine (3, 5a) 20.00+

384 ★ 6p rose. O.g., fresh, almost centered, very fine ..... (4) 32.50

385 ★ 6p dull red. O.g., fresh, centered to right, perforations cut in (5a) 32.50

1873-78 Small Star, Clean-Cut Perf. 15

386 ★田 1p blue green, block of 4 with top sheet margin. O.g., fresh, fine to very fine ..... (5B) 32.00+

387 ★田 1p blue green, block of 4. O.g., tiny age stains, fine ..... (5B) 32.00+

388 ★ 6p vermilion. O.g., good color, extra margin at bottom ..... (5D) 40.00

389 ★ 6p vermilion. O.g., slightly oxidized, perforations cut in ..... (5D) 40.00

1873 Large Star, Clean-Cut Perf. 15

390 ★田 1p blue green, block of 4, o.g., fresh, gum wrinkles, very fine .... (6) 40.00+  
*See illustration on page 48*

391 ★ 6p vermilion. O.g., fine but for tiny corner thinning ..... (7) 40.00

392 ★ 6p vermilion. Large part o.g., nearly fine ..... (7) 40.00





## 1875-81 Surcharged on Revenue, Large Star

393 ★	½p, 2½p, 4p. O.g., fine to very fine .....	(8-10)	19.50
394 ★	½p purple, error "OSTAGE" in pair with normal. O.g., fine to very fine .....	(8a, 8)	25.00
395 ★	½p purple, double surch. O.g., fresh, very fine .....	(8f)	30.00
396 ★	2½p lake, error "PENCE". Part o.g., trace of thinning, well centered and fine .....	(9c)	50.00
397 ○	1sh purple, error "SHLLIING". Lightly cancelled, perforations cut in at bottom; fine and scarce .....	(11a)	175.00
	<i>See illustration</i>		

## 1881 Star With Broad Points

398 ★	2½p lake. O.g., fresh, fine .....	(12)	30.00
399 ★	4p blue, horiz. pair. O.g., fresh, perforations touch at right, very fine .....	(14)	70.00+
	<i>See illustration</i>		

## 1861-81

400 ★	1p(7), compr. #1, 3, 5B(2) and 7A(3); unused or o.g., one tiny thinning, generally fine .....	60.50
401 ○	10 stamps, compr. #1, 1a, 4, 5(2), 5B, 6, 8a ("OSTAGE"), 11 and 12; few thinnings, mostly fine .....	62.65

## 1883 Provisionals

- 402 ○  $\frac{1}{2}$ p orange & green, unsevered pair, 1p orange & green. Lightly cancelled in blue, fine to very fine ..... (15, 16) 62.00

## 1883

- 403 ★  $\frac{1}{2}$ p to 1sh, compl. set incl. 1887 1p. O.g., mostly fine to very fine ..... (20-26, 30) 27.80

## 1886-91 Provisionals

- 404 ★ 9 diff., also extra pair of #31, one with wide spacing between "Two" and "Shillings" (S.G. 43b); o.g., fine to very fine ..... (27-29, 31, 32, 34-36, 38) 44.50+
- 405 ★ 4p on 2sh orange, vert. "d". O.g., fresh, very fine ..... (33) 50.00  
*See illustration opposite*
- 406 ★ 1p on 2sh orange, invert. surch. O.g., fine ..... (34a) 45.00  
*See illustration opposite*
- 407 ★  $2\frac{1}{2}$ p on 8p, vert. tete-beche pair, one "2" of  $\frac{1}{2}$ " upright, other italic, o.g., very fine; unpriced ..... (38b) —
- 408 ★ 1895-99  $\frac{1}{2}$ p to 1sh, compl. set; Postage Due 1892 sets compl., J5 and 7 used, others o.g., mostly fine to very fine ..... (39-46; J1-7) 37.90

## JAMAICA

## 1860-63 Watermarked Pineapple

- 409 ★ 1p blue, 2p rose, 3p green. Last 2 o.g., varied centering, averagely fine ..... (1-3) 32.00



- 410 ★ 1p pale blue, horiz. block of 8. O.g., fresh, minor bends, fine to very fine. Attractive and scarce block ..... (1a) 68.00+  
*See illustration*
- 411 ★ 2p rose, 4p brown orange. Former unused, perforations partly trimmed, latter o.g., upper right corner perforation loose ..... (2, 4) 53.00
- 412 ★ 2p rose, horiz. pair. O.g., fresh, very fine ..... (2) 26.00+



- 413 ★田 2p rose, block of 4. O.g., fresh, very fine. Rare block ..... (2) 52.00+  
*See illustration opposite*
- 414 ★田 3p green, block of 4. O.g., fresh, centered to bottom, perforations cut  
 in, fine and rare block ..... (3) 44.00+  
*See illustration opposite*
- 415 ★ 4p orange. O.g., fresh, short perforation at top, fine ..... (4a) 40.00
- 416 ★田 4p orange, block of 4. O.g., fresh, slight faults. An attractive and very  
 rare block ..... (4a) 160.00+  
*See illustration opposite*
- 417 ★田 6p lilac, block of 4. O.g. and fresh, centered to bottom, perforations  
 cut in, negligible faint vert. crease near left margin. Choice and  
 rare block ..... (5) 140.00+  
*See illustration opposite*
- 418 ★ 6c deep lilac. Unused, excellent color, very fine ..... (5a) 80.00  
*See illustration opposite*
- 419 ★ 1sh brown. O.g., very fine though perforations partly touch at left (6) 30.00

## 1870-71 CC Watermark

- 420 ★ 1p to 1sh, compl. set incl. 1872 ½p. All o.g. except 2. #7 and 13 tiny  
 faults, generally fine ..... (7-13) 52.50
- 421 ★田 1p deep blue, block of 4 with wing margin at right. O.g., fresh, per-  
 forations partly touch, very fine ..... (7a) 24.00+
- 422 ★田 2p rose, block of 4. O.g., fresh, fine to very fine ..... (8) 24.00+
- 423 ★田 2p rose, block of 4 with bottom sheet margin and control. O.g., deep  
 color, 2 perforations trimmed at right top, well centered ..... (8) 24.00+
- 424 ★ 1875 CC 2sh, 5sh; 1897 CA 1sh, 2sh, 5sh, compl. sets. O.g., mostly fine  
 to very fine ..... (14, 15, 28-30) 34.00
- 425 ★○ 1883-91, 3 compl. issues, incl. extra copy of 2p slate; #27 used, others  
 o.g. or unused, few faults, majority fine ..... (16-27) 38.10

## 1883-90 CA Watermark

- 426 ★田 1p blue, block of 4. O.g., centered, corner crease bottom left, other-  
 wise very fine. Rare block ..... (17) 40.00+  
*See illustration opposite*
- 427 ★田 1p carmine, 1p rose, 3p, 4p, 6p, blocks of 4. O.g., fresh, one 4p thin  
 spot; fine to very fine ..... (18, 18a, 21-23) 38.40+
- 428 ★田 2p rose, block of 4. O.g. and fresh, very fine. Choice and rare block (19) 44.00+  
*See illustration opposite*

## LEEWARD ISLANDS

## 1890

- 429 ★ ½p to 5sh, compl. set. O.g., 1sh thinning at top, otherwise fine to very  
 fine ..... (1-8) 23.95

## 1897 Jubilee Issue

- 430 ★ ½p to 1sh compl. O.g., fine to very fine ..... (9-15) 45.75
- 431 ★ 5sh green & ultramarine. O.g., fine ..... (16) 85.00  
*See illustration opposite*





413



414



416



417



426



428



418



431



434



435



436



440



441



453



454



462



## MONTserrat

## 1876 CC Watermark

- 432 ★ 1p, 6p; 1884-85 CA 1p; first 2 in pairs, last in block of 4. O.g., #1 faint crease, fine to very fine ..... (1, 2, 6) 34.50+
- 433 △ 1p red, diagonal bisect, well tied on piece which also bears 2 other 1p; fine; S.G. £18.15.0; Scott on cover \$41.50 ..... (1a, 1) —
- 434 ★ 6p blue green, horiz. pair. O.g., fresh, very fine; rare, unlisted Scott; S.G. £44 ..... (S.G. 3) —

*See illustration on page 51*

## 1880 CA Watermark

- 435 ★ 2½p red brown. O.g., fresh, centered, extremely fine ..... (3) 32.50

*See illustration on page 51*

## 1884-85 CA Watermark

- 436 ★ 4p blue. O.g., well centered, very fine for this very rare stamp ..... (9) 135.00
- See illustration on page 51*
- 437 ○ 4p blue. Very lightly cancelled, very fine but for tiny thinning .... (9) 37.50
- 438 ★ 1876-85, 8 diff. vals. O.g. or unused, few minor faults but generally fine; also incl. one Revenue stamp ..... (1, 2, 4, 5, 7, 8, 10, 11) 55.15

## NEVIS

## 1861 Perforated 13

## Bluish Paper

- 439 ★ 1p lake rose. Unused, very fine ..... (1) 27.50
- 440 ★ 4p dull rose. O.g., usual perforation irregularities at bottom, well centered ..... (2) 85.00
- See illustration on page 51*
- 441 ★ 6p gray. Unused, fine ..... (3) 60.00
- See illustration on page 51*

## Grayish Paper

- 442 ★ 1p, 4p, 6p. First unused, few short perforations, 4p and 6p o.g. and fine (5-7) 36.00
- 443 ★ 4p dull rose, 1sh green. O.g., fine ..... (6, 8) 40.00

## 1867 Perforated 15

- 444 ★ 1p red, 4p orange. Latter o.g., fine to very fine ..... (9, 10) 21.00
- 445 ○ 4p, single and pair; 1876 litho 4p; 1880 CC 1p; 1882 CA 4p blue; few tiny faults, generally fine lot, also incl. 3 addit. Revenue stamps (10, 15, 19, 26) 52.50
- 446 ☒ 4p orange, well centered, very fine. Tied by "AO9" to nearly compl. small, neat envelope NEVIS, Jan. 11, 77 to New York. Cover bears N. Y. 'Due 5 cts', Jan. 29 and St. Thomas, Jan. 13, 77 backstamp (10) —

- 447 ○ 1sh yellow green. Well centered, slight thinnings, very fine appearance (11) 45.00
- 448 ★ 1sh blue green. O. g., faintly age stained on back barely visible from the front, a few irregular perforations at bottom, still fine (12) 40.00

## 1876 Lithographed

- 449 ★ 1p rose (3), 1p red; perf. 11½ 1p vermilion. Four o. g., very fine (14, 14A, 18) 24.00
- 450 ★ 1p vermilion, compl. sheet of 12 with sheet margins all sides. O. g., fresh, fine to very fine. Very attractive (14b) 48.00+
- 451 ★ 1p vermilion, block of 11 and single, forming compl. sheet. No selvage o. g., perforations cut in and reinforcements, fresh (14b) 48.00+
- 452 ★ 1p red, retouch on top of hill, Pos. 1 in sheet. Unused, fine, S. G. 15i - £17 (14A var.) —
- 453 ★ 1p red, retouch behind kneeling figure, Pos. 1 in sheet. O. g., very fine. S. G. 15ii - £20 (14A var.) —  
*See illustration on page 51*
- 454 ★ 4p orange. O. g., fresh, almost very fine (15) 40.00  
*See illustration on page 51*
- 455 ★ 6p olive gray. O. g., well centered, gum wrinkle, otherwise very fine (16) 40.00
- 456 ★ 1sh; perf. 11½ 1p; 1879 CA 2½p; 1880 CA 4p blue. O. g., minor faults, attractive copies (17, 18, 20, 26) 55.00
- 457 ★ 1sh gray green, horiz. pair, Pos. 8 and 9 in sheet, latter crossed lines on hill. Unused, very fine. S. G. £18.15.0 (17 var., 17) —
- 458 ★ 1sh dark green (2), Pos. 2 and 9. O. g., very fine (17a) 30.00
- 459 ★ 1sh dark green, compl. sheet of 12 with sheet margins all sides. O. g., slight reinforcements. Very attractive sheet (17a) 180.00+  
*See illustration on page 55*
- 460 ★ Perf. 11½ 1p vermilion, compl. sheet of 12. O. g., and fresh, no selvage on top, where perforations are also a trifle irregular, otherwise very fine (18) 108.00+  
*See illustration on page 55*
- 461 ★ 1879-80 CC 1p; 1882-90 CA ½p to 1sh, 8 diff. O. g., fine to very fine (19, 21-25, 27, 29, 30) 39.85
- 462 ★ 1882-90 CA 6p green. Large part o. g., fresh, almost very fine (28) 60.00  
*See illustration on page 51*
- 463 ○ 1883 Provisionals, the 2 diff., one on small piece, fine to very fine (31, 32) 22.00

## ST. CHRISTOPHER

## 1870-90

- 464 ★ 10 diff. First 2 unused, others o. g., fine to very fine (2-4, 4a, 7-9, 12, 14, 16) 46.40

## 1875-79 CC Watermark, Perf. 14

- 465 ★ 2½p red brown; 1882 CA 2½p red brown. Former o. g., each tiny fault, fine (5, 11) 42.50
- 466 ★ 4p blue. O. g., fresh, very fine (6) 17.50



## 1882-90 CA Watermark

467 ★	1p lilac rose. O.g., very fine for this rare stamp ..... (10)	55.00
	<i>See illustration opposite</i>	
468 ★	4p blue. O.g., fresh, small thin spot, very fine appearance ..... (13)	80.00
	<i>See illustration opposite</i>	
469 ★	6p olive brown, 1sh violet. O.g., very fine ..... (15, 16)	20.00

## 1885-86 Provisionals Issue

470 ★	Compl. set, first in unsevered pair. O.g., fine to very fine .... (17-20)	35.50
471 ★田	4p on 6p green, block of 4. O.g., fresh, very fine ..... (20)	48.00+
	<i>See illustration opposite</i>	
472 ★○	4p on 6p; 1887-88 1p on ½p, 1p on 2½p(2); one #22 used, others o.g., one tiny faults; otherwise fine to very fine; also incl. 8 diff. Revenue stamps of St. Christopher or St. Kitts ..... (20-22)	35.00+

## ST. LUCIA

## 1860 Small Star

473 ★田	1p lake, block of 4. O.g., slight vert. crease at left, fine to very fine (1)	52.00+
474 ★	4p deep blue. Unused, very fine ..... (2)	60.00
	<i>See illustration opposite</i>	
475 ★	6p green. Unused, partly severed by scissors, nearly fine ..... (3)	60.00
476 ★	6p deep green. O.g., fresh, severed by scissors, perforations partly clipped at left, well centered ..... (3a)	60.00

## 1863 CC Watermark, Perf. 12½

477 ★	1p lake, 4p slate blue, 6p emerald, compl. set. Last o.g., good to fine (4-6)	63.00
-------	---	-------

## 1864 CC Watermark, Perf. 12½

478 ★	1p black, 6p violet, 1sh orange. O.g. or part o.g., fine to very fine (7, 9, 10)	44.50
479 ★	4p yellow. O.g., faint crease, fine ..... (8)	35.00
480 ★	6p violet, 1sh red orange. O.g., traces of age stains, fine for these (9, 10)	41.00
481 ★	1sh red orange. Unused, well centered, almost very fine ..... (10)	27.50

## 1864 CC Watermark, Perf. 14

482 ★田	1p deep black, block of 4. O.g., separation at bottom, fine to very fine (11)	16.00+
483 ★田	4p yellow, block of 4. O.g., fresh, nice color, very fine. Choice and scarce block ..... (12)	48.00+
	<i>See illustration opposite</i>	
484 ★	6p pale lilac, 1sh orange. O.g., fresh, perforations cut in slightly, fine to very fine ..... (13, 14)	47.50
485 ★	1sh orange, horiz. pair. O.g., fresh, perforations cut in slightly, very fine ..... (14)	60.00+
	<i>See illustration opposite</i>	





459



460



467



468



485



493



474



487



471



483



496



## 1883-84 CA Watermark

- 486 ★ 4p yellow. O.g., slight horiz. crease at top, otherwise very fine (21) 30.00  
 487 ★ 1sh orange. O.g., fresh, very fine ..... (23) 60.00  
*See illustration on page 55*

## 1884 Perforated 12

- 488 ★ 4p yellow. O.g., negligible trace of thinning, fine ..... (24) 52.50

## 1864-84

- 489 ★ 8 diff. O.g. or unused, some thinnings, fine or fine appearance  
 (7, 9, 13, 15-20, 22) 63.50

## 1883-98

- 490 ★  $\frac{1}{2}$ p to 10sh, 11 diff. and 4 extra values Die A. Mostly o.g., #28 and 31a  
 thinned, otherwise fine to very fine  
 (27-33, 27a, 29a, 31a, 33a, 35, 37-39) 43.45  
 491 ★ 3p, Die A, 6p lilac & blue, Die A, horiz. blocks of 6. O.g., fine to very  
 fine ..... (32a, 35a) 46.50+  
 492 ★ 6p violet. Some o.g., very fine ..... (34) 40.00  
 493 ★ 1sh brown orange, horiz. pair with bottom sheet margin and control.  
 O.g., slight crease at right, otherwise fine to very fine; rare pair  
 (36) 100.00+  
*See illustration on page 55*  
 494 ★ 1sh lilac & red, Die A, horiz. strip of 3. O.g., very fine ..... (37a) 22.50+

## 1892 Provisional Issue

- 495 ★ Compl. set, the bisected stamp in pair. O.g. except #42, very fine  
 (40-42) 27.75  
 496 ★  $\frac{1}{2}$ p on 3p lilac & green, Die A, block of 4. O.g., fine to very fine (40a) 80.00+  
*See illustration on page 55*

## ST. VINCENT

## 1861 Unwatermarked, Clear-Cut Perforation

- 497 ○ 6p; 1863-69 Unwatermarked perf. 11 to 13 4p blue, 1sh indigo, 1sh  
 brown; good to fine ..... (1B, 6, 9, 10) 77.50

## 1862-66 Unwatermarked, Rough Perf. 14 to 16

- 498 ★ 1p rose, single and pair; 1863-69 perf. 11 to 13 1p; 1871-78 small star,  
 rough perf. 1p black; last 2 o.g., fine  
 (2, 5, 13) 31.00  
 499 ★ 1p rose, block of 4, o.g., fresh, well centered for this and very fine (2) 28.00+  
 500 1p rose, horiz. pair and 6p dark green. Tied by "A10" to small, neat  
 cover St. Vincent, July 9, 66 to Paris, bearing various markings.  
 Attractive cover from the "Duke de Polignac" correspondence (2, 3) —  
 501 ★ 6p dark green, horiz. pair. O.g., fresh, some extra margin at top, fine to  
 very fine ..... (3) 24.00+



- 502 ★ 1sh slate. O. g., fresh, well centered, exceptionally fine ..... (4) 60.00  
*See illustration*
- 503 ★ 1sh slate. O. g., well centered but small copy, fine ..... (4) 60.00  
*See illustration*
- 504 ★田 1sh slate, block of 4. O. g. and brilliant fresh, perforations partly cut in.  
 A very fine and rare block ..... (4) 240.00+  
*See illustration*
- 505 ★ 1862-78, 6 diff. values. O. g. or unused, fine to very fine  
 (2, 3, 5, 13, 14A, 20) 46.50
- 1863-69 Unwatermarked, Perf. 11 to 13
- 506 ★田 1p rose, blocks of 4 (2), distinct shades. O. g. or part o. g., perforations  
 partly cut in, fine to very fine ..... (5) 40.00+
- 507 ★ 4p blue. O. g., almost very fine ..... (6) 40.00  
*See illustration*
- 508 ★田 4p blue, block of 4. O. g., from bottom of sheet with wide extra mar-  
 gin, negligible tiny age stain. A very rare block ..... (6) 160.00+  
*See illustration*
- 509 ㊦ 4p blue, horiz. pair. Cancelled by clear strike of "A10" and tied by red  
 London Paid marking to small, neat folded letter St. Vincent, Nov.  
 25, 67 to Paris, bearing various transit markings. A very pretty  
 cover from the "Duke de Polignac" correspondence ..... (6) —  
*See illustration*



510 ★	4p orange. O.g., brilliant fresh and very fine ..... (7)	40.00
	<i>See illustration opposite</i>	
511 ★	4p orange. Unused, fine ..... (7)	40.00
512 ☒	4p orange, two singles. Cancelled by "A10" and tied by red London Paid marking to small, neat folded letter to Paris, bearing various transit markings. Choice and rare cover from the "Duke de Polignac" correspondence ..... (7)	—
	<i>See illustration opposite</i>	
513 ★	6p deep green. O.g., centered to bottom left, a few irregular perforations, fresh copy ..... (8)	40.00
514 ★田	6p deep green, block of 4. O.g. and fresh, extra margin at top, a few irregular perforations at bottom. Choice and very rare block ..... (8)	160.00+
	<i>See illustration opposite</i>	
515 ★	1sh indigo. O.g., centered to left, fine and scarce ..... (9)	80.00
	<i>See illustration opposite</i>	
516 ★	1sh indigo, diff. shade. Part o.g., centered to top left, thinnings ..... (9)	80.00
517 ★	1sh indigo, vert. pair. O.g., fresh, narrow stamps, fine to very fine. Very rare pair ..... (9)	180.00
	<i>See illustration opposite</i>	
518 ★	1sh brown. O.g., fresh, well centered and very fine ..... (10)	110.00
	<i>See illustration opposite</i>	
519 ★	1sh brown. O.g., fresh, extra margin at bottom, fine ..... (10)	110.00
	<i>See illustration opposite</i>	
520 ☒	1sh brown and 1871 1p black, rough perforations, horiz. strip of 4. On small, neat folded letter to Paris, cancelled by "A10" and just tied by French transit marking. Cover bears red St. Vincent, Oct. 25, 71, red "PD" in oval etc. Another lovely and very rare cover from the "Duke de Polignac" correspondence ..... (10, 13)	—
	<i>See illustration opposite</i>	

## Perforated 11 to 13 x 14 to 16

521 ★	1sh slate. Unused, negligible traces of foxing and tiny corner faults, still fine ..... (12)	50.00
522 ★	1sh slate, horiz. pair. O.g., fresh, very fine ..... (12)	100.00+
	<i>See illustration opposite</i>	

## 1871-78 Watermarked Small Star

## Clean-Cut Perf. 14 to 16

523 ★田	1p black, block of 4. O.g., fine to very fine ..... (14A)	40.00+
524 ★田	6p blue green, block of 4. O.g., fresh, minor gum wrinkle, fine to very fine. Very rare block ..... (14B)	260.00+
	<i>See illustration opposite</i>	

## Perforated 11 to 13

525 ★	4p dark blue. O.g., severed by scissors, perforations clipped at top and partly at right ..... (16)	65.00
526 ★	4p dark blue, horiz. pair. O.g., well centered, small age stains on some perforations, barely visible from the front, otherwise very fine ..... (16)	130.00+
	<i>See illustration opposite</i>	
527 ★	1sh deep rose. Part o.g., tiny age stain at top and slight thinning, fine for this rare stamp ..... (17)	200.00
	<i>See illustration opposite</i>	





510



514



524



518



515



522



526



519



527



512



517

*Duke de Polignac*  
*N° 10 Place Louis XV*



520

*Duke de Polignac*  
*N° 10 Place Louis XV*  
*Paris*



- 528 ★ 1sh claret. O.g. and fresh, good color, nicely centered, negligible tiny piece of undissolved pulp in paper, very fine ..... (18) 150.00  
*See illustration opposite*
- 529 ★ 1sh claret. O.g., fresh, good color, well centered, minute thinning, a fine copy ..... (18) 150.00  
*See illustration opposite*
- 530 ★ 1sh claret. O.g., fresh, good color, perforations touch at top, fine despite tiny thinning ..... (18) 150.00  
*See illustration opposite*

## Perforations 11 to 13 x 14 to 16

- 531 ★田 1p black, top marginal block of 4. O.g., fresh, stamps are very fine (20) 30.00+
- 532 ★田 6p pale yellow green, block of 4. O.g., fresh, nice color, very fine and very rare block ..... (21) 240.00+  
*See illustration opposite*
- 533 ○ 1sh lilac rose. O.g., extremely fine for this very rare stamp ..... (22) 400.00  
*See illustration opposite*
- 534 ★ 1sh vermilion. Unused, almost very fine ..... (23) 75.00  
*See illustration opposite*
- 535 ○ 1871-78. Various perfs, 7 stamps, compr. #13, 14, 14B(2), 15, 16 and 21; 2 slight faults, very good to very fine ..... 75.50

## 1880-81 Small Star, Perf. 11 to 13

- 536 ★ ½p orange, 1p gray green, 1p drab, the ½p in block of 4. O.g., fine to very fine ..... (24-26) 36.50+
- 537 ★田 1p gray green, block of 4. O.g., fresh, extra margin at top, very fine ..... (27) 50.00+  
*See illustration opposite*
- 538 ★ 4p ultramarine. O.g., fresh, very fine ..... (27) 65.00  
*See illustration opposite*
- 539 ★○ 4p; 1883-84 CA perf. 12 ½p green; 4p ultramarine; 1883 2½p on 1p; 1883-87 CC perf. 14 ½p, 1p drab (2), one BUCCAMENT canc., 1p pink, 4p ultramarine; 3 o.g., others used, mostly fine to very fine (27, 35, 36, 40-42, 44, 46) 49.75
- 540 ★ 6p yellow green. Unused, well centered, fresh and extremely fine (28) 60.00  
*See illustration opposite*
- 541 ★ 6p yellow green. Unused, centered to bottom left, perfs cut in at left, fine ..... (28) 60.00
- 542 ★ 6p yellow green, vert. pair. Part o.g., negligible traces of age stains on 2 perforations, very fine and scarce pair ..... (28) 120.00+  
*See illustration opposite*
- 543 ★ 1sh vermilion. Part o.g., fresh, bright color, well centered and very fine ..... (28A) 65.00  
*See illustration opposite*
- 544 ★ 1sh vermilion. O.g., fresh, outstanding color, very fine though centered to top ..... (28A) 65.00  
*See illustration opposite*
- 545 ★ 5sh rose. O.g. and fresh, nice color, well centered, exceptionally fine ..... (29) 250.00  
*See illustration opposite*
- 546 ★ 5sh rose, bottom sheet margin copy. Unused, fresh, centered, one perforation short at right top, otherwise very fine ..... (29) 250.00  
*See illustration opposite*





528



529



530



533



534



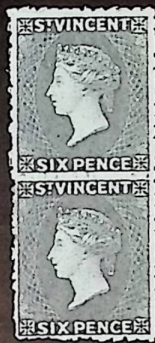
538



532



537



542



540



543



544



545



546



560



561



557



559



564



## 1880 Provisional



547

548

549

- 547 ★ 1p on half of 6p blue green, unsevered pair. O. g., fresh, very fine (30a) 450.00  
*See illustration*
- 548 ★田 1p on half of 6p blue green, unsevered block of 4. Part o. g., slight age stains, barely visible from the front. Fine block of great rarity, possibly unique ..... (30a) 900.00+  
*See illustration*
- 549 ○ 1p on half of 6p blue green, unsevered pair, "A10" cancellation, fine to very fine ..... (30a) 300.00  
*See illustration*

## 1881 Provisionals



550

552

553

554

- 550 ★ 1/2p on half of 6p yellow green, unsevered pair. O. g., nice color and fresh, nearly very fine ..... (31a) 100.00  
*See illustration*
- 551 ○ 1/2p on half of 6p yellow green. Straight edge on top, fine ..... (31) 40.00
- 552 ○ 1p on 6p yellow green. Very lightly cancelled, well though not perfectly centered, very fine ..... (32) 75.00  
*See illustration*
- 553 ★ 4p on 1sh vermillion. Unused, perfectly centered, fresh and very fine ..... (33) 400.00  
*See illustration*

## 1883-84 CA Watermark, Perf. 12

- 554 ★ 1/2p orange. O. g., centered, very fine and very rare ..... (34) 200.00  
*See illustration*

- 555 ○ 4p ultramarine, 6p yellow green, fine ..... (36, 38) 40.00  
 556 ★ 6p yellow green. O.g., fresh, nice color, extremely fine ..... (38) 30.00  
 557 ★ 6p yellow green, horiz. block of 6. O.g., brilliant fresh, good color, well centered, top center stamp negligible tiny thinnings. A choice block and very rare ..... (38) 180.00+  
*See illustration on page 61*

- 558 ★ 1sh orange vermilion. O.g., very fine ..... (39) 11.00

#### 1883-97 CA Watermark, Perf. 14

- 559 ★ 4p ultramarine, horiz. pair. O.g., fresh, well centered, extremely fine ..... (46) 130.00+  
*See illustration on page 61*

- 560 ★ 4p dull blue. Unused, very fine; S. G. 38a - £35 ..... (46 var.) 65.00+  
*See illustration on page 61*

- 561 ★ 4p red brown. O.g., fresh, centered, very fine but for negligible trace of thinning ..... (47) 100.00  
*See illustration on page 61*

- 562 ★ 4p lake brown, horiz. block of 6. O.g., very fine ..... (48) 27.00+

- 563 ★ 6p violet, top sheet margin copy with invert. watermark. Mint, beautiful color, centered, extremely fine ..... (51) 20.00+

- 564 ★ 6p violet, block of 4. O.g. and brilliant fresh, centered, separation at top; very fine and scarce block ..... (51) 80.00+  
*See illustration on page 61*

## TOBAGO

#### 1879 CC Watermark

- 565 ★ 1p, 3p, 6p; 1880 CC ½p, 1p, 4p, 1sh; o.g. or unused, few tiny faults, generally fine ..... (1-3, 8-10, 12) 58.00



566

567

570

571

- 566 ★ 1sh green. Large part o.g., well centered, fine ..... (4) 40.00  
*See illustration*  
 567 ★ 5sh slate. O.g., fresh and fine ..... (5) 85.00  
*See illustration*  
 568 ★ 1880 CC Wmk. 6p bistre brown. O.g., fine ..... (11) 35.00  
 569 ★ 1883 2½p on 6p; 1882-96 CA, 9 diff.: 1886-96 Provisionals compl.; majority o.g., few tiny faults, generally fine ..... (13-18, 20, 22-31) 40.80  
 570 ★ 1882-96 CA Wmk. 4p yellow green. Large part o.g., very fine ..... (19) 40.00  
*See illustration*  
 571 ★ — 6p bistre brown. O.g., very fine for this scarce stamp ..... (21) 85.00  
*See illustration*



## TRINIDAD

1847 "Lady McLeod"



- 572 ○ 5c blue. Good color and fresh, pen cross cancellation as always, large margins and superb. One of the finest copies known of this rarity. S. G. to £200 ..... (S. G. 1) —

*See illustration*

## 1851-53 Imperforate, Blued Paper

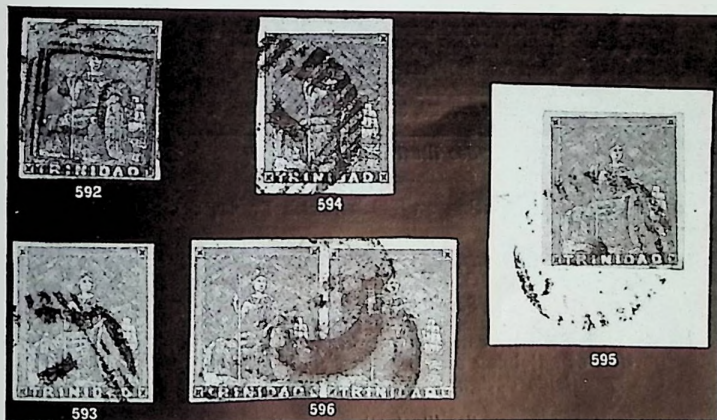
- 573 ○ 1p brick red, 1p purple brown, 1p blue. All 4 margins, first fine, others very fine ..... (1-3) 20.00
- 574 ★ 1p brown red. O.g., very fine ..... (1a) 17.50
- 575 ○ 1p brown red, horiz. pair. Large margins, possibly bottom right corner. Cancelled by numeral "20"; very fine but for slight horiz. crease (1a) 16.00+
- 576 △ 1p brown red, horiz. pair. Tied on piece, very fine with margins all round ..... (1a) 16.00+
- 577 ★ 1p purple brown, 1p blue (2), 1p gray brown; 1854 white paper 1p blackish violet; mostly o.g.; very fine ..... (2, 3, 4a, 8) 16.75
- 578 ★ 1p purple brown, vert. block of 6 with sheet margin at left. O.g., fresh, very fine ..... (2) 15.00+
- 579 ○ 1p purple brown, tied on piece, 1p blue, vert. pair; fine ..... (2, 3) 18.00+
- 580 ★ 1p blue; 1854 white paper, 1p blackish violet, both blocks of 4. O.g. latter one stamp minute thinning, otherwise both very fine (3, 8) 20.00+
- 581 ★ 1p gray, block of 4. O.g., light toning in a few places, fine to very fine with margins all round ..... (4) 40.00+
- 582 ○ 1p gray. Margins all sides showing portions of 3 adjoining stamps, choice copy ..... (4) —
- 583 △ 1p gray. Tied on piece, very fine ..... (4) 10.00+
- 584 ○ 1p gray, horiz. pair. Huge margins, probably bottom right corner and showing portions of adjoining stamps on other sides, superb ..... (4) —
- 585 ★ 1p gray brown, horiz. bottom right corner pair. O.g., very fine (4a) —
- 586 △ 1p gray brown, horiz. pair. Tied on piece, scissors cut top left just outside design, fine to very fine with margins all round ..... (4a) 17.00+

## 1854-57 White Paper

- 587 ○ 1p brown red, 1p gray, 1p blackish violet. All 4 margins, very fine (6-8) 32.50
- 588 △ 1p brown red, horiz. pair. Tied on small piece, margins all sides, left stamp faint crease otherwise very fine ..... (6) 20.00+
- 589 ★田 1p gray, block of 4. O.g., very fine ..... (7) 20.00+
- 590 ○ 1p blackish violet; 1859 Imperf. 1p, 1sh; each slight thinning, otherwise very fine ..... (8, 14, 17) 39.50
- 591 △ 1p blackish violet, horiz. pair. Tied on small piece, margins all sides, very fine ..... (8) 20.00+


## 1852-60 Lithographed

## 1852 First Printing on Yellowish Paper, S. G. 12, 13




- 592 ○ 1p blue. Clear numeral cancellation "20", margins all round, minute brown spot in paper in left margin, very fine. S. G. 12, to £120 (9) 150.00  
*See illustration*
- 593 ○ 1p blue. Margins all sides, very fine but for negligible faults. S. G. 12, to £120 ..... (9) 150.00  
*See illustration*
- 594 ○ 1p deep blue, sheet margin copy. Beautiful color and sharp very early impression. Large margins with part sheet margin at top. Negligible trace of thinning, still a wonderful copy. S. G. 13a, to £140+ (9a) 175.00+  
*See illustration*
- 595 △ 1p blue. Tied on piece. Fresh, good color, clear impression, margins all round (very small but clear left bottom). Very fine stamp and piece. S. G. 12, to £120+ ..... (9) 150.00+  
*See illustration*
- 596 ○ 1p blue, horiz. pair. Small or no margin at bottom, margins other sides, large at top. Cancellation a trifle heavy in places and slight faults; rare pair. S. G. 12, to £240 ..... (9) 300.00+  
*See illustration*




- 597  1p blue. Large margins, good color and extremely fine. Tied by numeral "1" to small, neat folded letter originating at CIUDAD BOLIVAR, VENEZUELA, Nov. 1, 1852, addressed to Hamburg, Germany, bearing inside "by Dolores via Trinidad". Cover is postmarked on back Trinidad, Nov. 9, 52, bears 2 ms. rate markings on front, British Transit (Dec. 10) and Hamburg arrival markings, Dec. 12, 52 on back. A wonderful cover of the greatest rarity, probably unique used from Venezuela

*See illustration opposite*

- 598  1p blue, from bottom row of sheet showing constant horiz. color line across the stamp through the middle of the shield. Small to large margins all sides, showing small portion of adjoining stamps at left, good color and very fine. Tied by numeral "1" to small, neat envelope to London. Cover bears on front ms. rate marking, on back Trinidad, Nov. 9, 1852 and red British arrival postmark, Dec. 10, 52. Choice and rare cover (9)

*See illustration opposite*

- 599  1p blue. Good color, clear impression, partly close at top but not cut into, very large margins other sides with part sheet margin at right. On small, neat folded letter to New York, cancelled by numeral "1". Cover bears on front "10" in circle and red ms. rate marking, on back Trinidad, Nov. 26, 52 and St. Thomas transit marking. Rare cover (9)

*See illustration opposite*

#### 1853 Second Printing on Thick Bluish Paper, S. G. 14, 15

- 600 ○ 1p blue. Large margins, good color, negligible faint toning in small place, very fine. S. G. to £140 (10) 175.00

*See illustration opposite*

- 601 ○ 1p blue. Very lightly cancelled, nice impression, large margins showing portion of adjoining stamp at top, tiny corner crease top left, practically outside design, otherwise exceptionally fine. S. G. to £140 (10) 175.00

*See illustration opposite*

- 602 ○ 1p blue. Very large margins, lightly cancelled. With "Royal" certificate stating "that it is genuine, but the paper has been tampered with, and the stamp heavily rolled". Exceptionally fine appearance. S. G. to £140 (10) 175.00

*See illustration opposite*

- 603 ○ 1p blue. Very small to large margins all round, lightly cancelled, a fine copy of this scarce stamp. S. G. to £140 (10) 175.00

*See illustration opposite*

- 604 ○ 1p blue. Lightly cancelled, margins all sides, slight vert. crease. S. G. to £140 (10) 175.00

*See illustration opposite*

- 605 ○ 1p blue. Neatly cancelled, slight thinnings, attractive copy with margins all round. S. G. to £140 (10) 175.00

*See illustration opposite*

- 606 △ 1p blue. Tied on piece by numeral "1". Fresh, margins all sides with part sheet margin at top. A lovely stamp, exceptionally fine. S. G. to £140+ (10) 175.00+

*See illustration opposite*



600



601



602



603



604



605

Ad Wappain Egg  
 Cascof  
 Carl Müller of Wison Egg  
 Hamburg

597



606



Top  
 Mrs A. Sutherland.  
 Richmond, Canada



598



10  
 David M. H. H. H. H. H.  
 Banking office

599



## 1855 Third Printing, Impression less distinct

in Greenish Blue on Thin Paper. S. G. 18

- 607 ○ 1p greenish blue. Large even margins, small thinnings, very fine appearance. S. G. to £45 ..... (12a) 100.00  
*See illustration opposite*
- 608 ○ 1p greenish blue. Margins all sides, large on 3, two tiny thinnings. S. G. to £45 ..... (12a) 100.00  
*See illustration opposite*
- 609 ○ 1p greenish blue. Lightly cancelled, margins  $3\frac{1}{2}$  sides, tiny paper flaws. S. G. to £45 ..... (12a) 100.00  
*See illustration opposite*
- 610 ○ 1p greenish blue. Small margins all round, small stain left top and minute thinning. S. G. to £45 ..... (12a) 100.00  
*See illustration opposite*
- 611 △ 1p greenish blue. Tied on piece by clear numeral "2", small to large margins, negligible tiny rub in top right corner. Attractive piece. S. G. to £45+ ..... (12a) 100.00+  
*See illustration opposite*
- 612 ○ 1p grayish blue, horiz. pair, on toned paper. Large margins, very fine. S. G. to £90+ ..... (12a) 200.00+  
*See illustration opposite*

## 1856 Scarce Fourth Printing

in Bright Blue on Thin Paper, S. G. 16, 17

- 613 ○ 1p blue. Lightly cancelled, margins all sides, thinnings, fine appearance. S. G. 16, to £45 ..... (12) 100.00  
*See illustration opposite*
- 614 ○ 1p bright blue, CORNER COPY. Sheet margins top and left, large margins other sides, nice color. An outstanding copy of great rarity (12) —  
*See illustration opposite*
- 615 ○ 1p bright blue, horiz. top sheet margin pair. Large margins other sides, negligible minor faults. A choice pair and very rare. S. G. to £90+ ..... (12) 200.00+  
*See illustration opposite*

## 1858 Fifth Printing, Impression still less distinct,

varying shades, includes, S. G. 19, 20a to £30

- 616 ○ 1p Prussian blue. Lightly cancelled, large margins, extremely fine (11) 50.00+  
*See illustration opposite*
- 617 ○ 1p slate blue. Lightly cancelled, large margins, extremely fine .... (11) 50.00  
*See illustration opposite*
- 618 ○ 1p grayish blue. Margins all round (close bottom left but not touched) and showing portion of adjoining stamp at top ..... (11) 50.00+  
*See illustration opposite*
- 619 ○ 1p slate blue. Lightly cancelled, large even margins, thinned at top, extremely fine appearance ..... (11) 50.00
- 620 ○ 1p greenish slate. Margins all sides, lightly cancelled, negligible tiny corner crease, very fine ..... (11) 50.00  
*See illustration opposite*
- 621 ○ 1p slate blue. Very fine but for tiny thinning in top left corner (11) 50.00
- 622 ○ 1p slate blue, left sheet margin copy. Lightly cancelled, trace of thinning, still very fine with margins all round ..... (11) 50.00+  
*See illustration opposite*





607



608



609



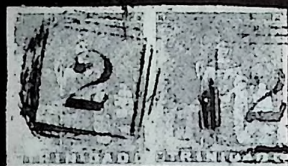
610



611



613



612



614



615



616



617



618



620



622



625



626



627



633



634



635



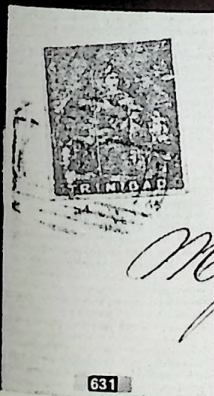
629



636



637



631



630



638



639



623 ○	<b>1p grayish blue.</b> Two thinnings, lightly cancelled and fine appearance (11) 50.00
624 ○	<b>1p Prussian blue.</b> Repaired, fine looking ..... (11) 50.00
625 △	<b>1p deep greenish slate, very worn impression.</b> Tied on piece, large margins, extremely fine ..... (11) 50.00+ <i>See illustration on page 69</i>
626 △	<b>1p, unusual gray shade.</b> Tied on small piece, fine ..... (11) 50.00+ <i>See illustration on page 69</i>
627 ○	<b>1p slate blue, horiz. pair.</b> Small to large margins all round, nearly very fine ..... (11) 100.00+ <i>See illustration on page 69</i>
628 ○	<b>1p gray blue, horiz. pair.</b> Slightly cut into at left and thinnings, fairly clear impression and fine appearance ..... (11) 100.00+
629 △	<b>1p slate blue, horiz. pair.</b> Tied on piece, large margins, left stamp vert. crease, very attractive pair ..... (11) 100.00+ <i>See illustration on page 69</i>
630 △	<b>1p slate blue, horiz. pair with left sheet margin.</b> Tied on piece, mar- gins other sides except touched 2 places. Attractive piece ..... (11) 100.00+ <i>See illustration on page 69</i>
631 ☒	<b>1p slate blue, fine.</b> Tied by numeral "1" to small, neat folded letter Jan. 9, 1859 to New York. Cover bears red crowned "PAID at Trini- dad", red crayon "4" and "Steamship 10" and on back St. Thomas, Jan. 15, 1859 transit marking ..... (11) 50.00+ <i>See illustration on page 69</i>
632 ☒	<b>1p slate blue.</b> Margins all round, faint crease and tiny rub, fine appear- ance. Tied by numeral to small cover (piece missing and patched up) Bellevue Estate, Dec. 58 to Port of Spain ..... (11) 50.00+

1860 Sixth Printing, Impression shows no or hardly any lines of background.

Slate and Gray Shades, S. G. 21, 22 to £28

633 ★	<b>1p gray.</b> Unused, thinning, fine appearance with margins all round (11) 150.00 <i>See illustration on page 69</i>
634 ○	<b>1p slate.</b> Very lightly cancelled, very fine with margins all round (11) 50.00 <i>See illustration on page 69</i>
635 ○	<b>1p slate.</b> Margins all sides, very fine ..... (11) 50.00 <i>See illustration on page 69</i>
636 ○	<b>1p slate.</b> Lightly cancelled, very fine ..... (11) 50.00 <i>See illustration on page 69</i>
637 ○	<b>1p slate.</b> Neatly cancelled, very fine ..... (11) 50.00 <i>See illustration on page 69</i>
638 ○	<b>1p slate.</b> Almost very fine ..... (11) 50.00 <i>See illustration on page 69</i>
639 ○	<b>1p gray.</b> Lightly cancelled, very fine ..... (11) 50.00 <i>See illustration on page 69</i>
640 ○	<b>1p gray.</b> Lightly cancelled, fine with very small margins all round (11) 50.00
641 ○	<b>1p slate.</b> Lightly cancelled, fine despite small tear at left ..... (11) 50.00
642 ○	<b>1p slate, 1p gray.</b> Both lightly cancelled, thinnings, attractive copies with margins practically all round ..... (11) 100.00
643 ○	<b>1p slate, 1p gray.</b> Both lightly cancelled, each slightly touched, one minute corner crease, fine ..... (11) 100.00

- 644 ○ 1p slate, horiz. pair. Margins 3 sides, partly touched at top, lightly cancelled, tiny pin hole, fine ..... (11) 100.00+

*See illustration on page 73*

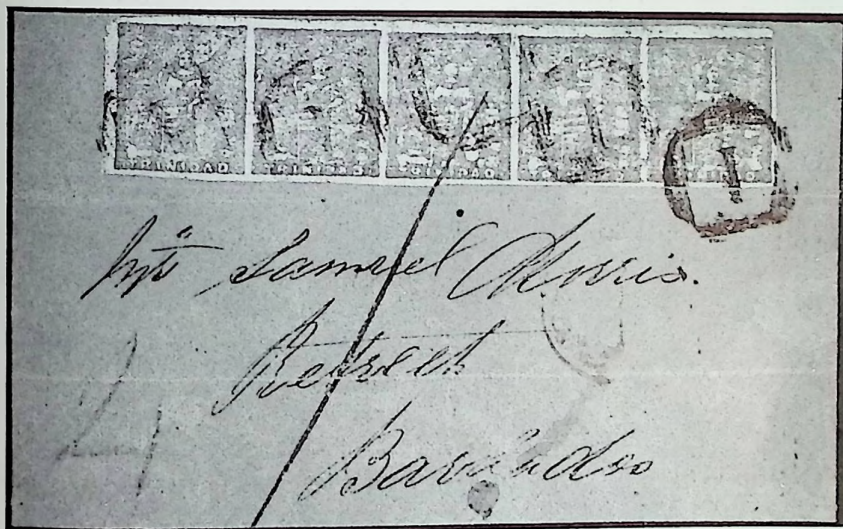
- 645 ○ 1p gray, horiz. pair. Margins all sides, right stamp skinned at top, other is very fine ..... (11) 100.00+

*See illustration on page 73*



- 646 ○ 1p gray horiz. strip of 3. Margins all sides, faint natural paper fold and center stamp tiny thinning. A very fine strip and very rare (11) —

*See illustration*



- 647 ☒ 1p gray, horiz. corner strip of 5. Margins all sides, part sheet margin top and left, very fine. Lightly cancelled and tied by numeral '1', also by portion of pen stroke, to small, neat (refolded) buff envelope to Barbados. Cover bears various markings on front and back. Only one other strip of 5, off cover, is said to exist. Corner strip and cover are believed to be unique. One of the outstanding items known of Trinidad (11) —

*See illustration*



## 1860 Seventh Printing 1p rose, S. G. 23, 24, 24a

- 648 ★ 1p rose, compl. sheet of 54 (9x6). O. g. and fresh, few faults, vast majority very fine. Scarce in full sheet ..... (13) 324.00+
- 649 ○ 1p rose. Margins all round, very fine for this ..... (13) 20.00
- 650 ○ 1p rose. Cancelled by numeral "1", also by town postmark dated March or May 28, 60, thinning, very fine appearance ..... (13) 20.00+
- 651 ○ 1p rose (2). One tiny thinnings, fine ..... (13) 40.00
- 652 ★○ 1p rose (3), one unused, others used. Thinnings and one cut into ..... (13) 46.00
- 653 ○ 1p rose, horiz. pair. Margins all sides, very fine; rare pair ..... (13) 40.00+  
*See illustration opposite*

## 1859 Issue

## Imperforate

- 654 ○ 1p dull rose (4), incl. pair. All 4 margins, one in pair faintly creased; fine to very fine ..... (14) 28.00+
- 655 ✉ 1p dull rose (2); pin-perf. 14 1p carmine, fine. Tied on 3 small folded letters 1859 to New York. All name of addressee cut out but attractive covers ..... (14, 22a) 21.50+
- 656 ★ 4p gray lilac. Unused, margins all round, very fine but for faint crease ..... (15) 22.50
- 657 ★ 4p gray lilac, block of 4 with left sheet margin. O. g., fresh, top right stamp slight thinning, otherwise very fine ..... (15) 90.00+  
*See illustration opposite*
- 658 ○ 6p green. Lightly cancelled, margins all sides, very fine. S. G. to £25 ..... (16) 50.00  
*See illustration opposite*
- 659 ○ 6p green. Lightly cancelled, margins all sides showing portion of adjoining stamp at left, very fine. S. G. to £25 ..... (16) 50.00  
*See illustration opposite*
- 660 ○ 6p green. Deep color, very lightly cancelled, faint vert. crease, otherwise very fine with margins all sides, very large on 3. S. G. to £25 ..... (16) 50.00  
*See illustration opposite*
- 661 ○ 6p green. Very lightly cancelled, small thinning, extremely fine appearance. S. G. to £25 ..... (16) 50.00  
*See illustration opposite*
- 662 ○ 6p yellow green. Very fine but for slight thinnings at bottom. S. G. to £25 ..... (16) 50.00
- 663 ★ 1sh slate blue. O. g., superb ..... (17) 22.50  
*See illustration opposite*
- 664 ★ 1sh slate blue. Large part o. g., very fine but for tiny thinning .... (17) 22.50
- 665 ★ 1sh slate blue, block of 4. O. g., fresh, margins all sides, very fine ..... (17) 90.00+  
*See illustration opposite*
- 666 ○ 1sh slate blue. Large margins, extremely fine. S. G. to £12 ..... (17) 22.50  
*See illustration opposite*
- 667 ○ 1sh slate blue, horiz. pair. Margins all sides, faint creases and trace of thinning, attractive and scarce pair. S. G. to £24+ ..... (17) 45.00+  
*See illustration opposite*





644



645



653



657



665



682



658



659



660



661



663



666



667



669



670



671



673



674



681



687



## Pin-Perforated 12½

- 668 ○ 1p dull rose red; pin-perf. 14 6p yellow green; fine ..... (18, 25) 27.00
- 669 ★ 6p deep green. Part o.g., very deep color, severed by scissors but shows perforations nearly all round (small nick top left). Unpriced unused Scott and S. G. and very rare ..... (20) —  
*See illustration on page 73*
- 670 △ 6p deep green, two singles, one pin-perf. 12½, other pin-perf. 14, tied to same fragment. Severed by scissors, but good portions of perforations show. One trace of age stain. Interesting and rare piece (20, 24) 40.00+  
*See illustration on page 73*

## Pin-Perforated 14

- 671 ★ 1p rose red. O.g., fresh, very fine for this stamp ..... (22) 20.00  
*See illustration on page 73*
- 672 ★ 1p rose red. Similar copy ..... (22) 20.00
- 673 ★ 1p rose red, left sheet margin. O.g., fresh, exceptionally fine .... (22) 20.00+  
*See illustration on page 73*
- 674 ★ 4p brown lilac. O.g., fresh, extremely fine ..... (23) 20.00  
*See illustration on page 73*
- 675 ★ 4p; 1861 rough perf. 1p: 1863 thick paper 1p carmine; unused or o.g., slight faults, fine appearance ..... (23, 33, 39) 50.00
- 676 ★ 4p brown lilac, horiz. pair. O.g., fresh, horiz. crease which does not show on face, fine ..... (23) 40.00+
- 677 ○ 4p violet. Beautiful color, severed by scissors but perforations show on all sides, very fine ..... (23a) 22.50
- 678 ○ 4p (3 shades). Perforations almost completely clipped but design intact, one small thinning ..... (23a, 23b) 67.50
- 679 ○ 4p; 1861 rough perf. 1p, 4p; 1863 thick paper 1sh indigo (2); good to fine ..... (23b, 33, 35, 42) 67.50
- 680 ★ 6p yellow green. O.g., fresh, perforations show on all sides, centered to bottom left, very fine ..... (25) 20.00
- 681 ★ 6p yellow green, horiz. pair. O.g., fresh, perforations show on all sides, well centered, exceptionally fine ..... (25) 40.00+  
*See illustration on page 73*
- 682 ★田 6p yellow green, block of 4. O.g., fresh, perforations show all sides except partly at bottom. A very rare block ..... (25) 80.00+  
*See illustration on page 73*

## 1860 Clean-Cut Perf. 14 to 15½

- 683 ★ 1p dull rose. O.g., almost very fine ..... (27) 20.00
- 684 ★ 4p violet brown. O.g., centered to top left, otherwise very fine (29) 22.50
- 685 ★ 6p yellow green. O.g., fresh, centered to top right, otherwise very fine (31) 25.00

## 1861 Rough Perf. 14 to 16½

- 686 ○ 1p dull rose, 4p brown lilac. Fine to very fine ..... (33, 35) 15.00
- 687 ★ 4p dull violet. Some o.g., nice color, very fine for this stamp. Unpriced Scott; S. G. 53a listed as lilac at £26 ..... (35a) —  
*See illustration on page 73*
- 688 ○ 4p dull violet, 1sh purple blue. Fine appearance but each thinning, very light on the 4p ..... (35a, 37a) 50.00

689 ○	1sh indigo. Slight stains, fine .....	(37)	40.00
690 ○	1sh purple blue. Partly severed by scissors, negligible traces of thin- nings, very attractive copy .....	(37a)	40.00

## 1863 Thick Paper

## Perforated 11½ to 12

691 ★	4p dull violet. O. g., fine .....	(40)	20.00
692 ★	6p deep blue green. O. g., fresh and fine; scarce .....	(41)	125.00
	<i>See illustration on page 76</i>		
693 ○	6p, 1sh; perf. 13 6p; varied centering, fine .....	(41, 42, 46)	39.00

## Perforated 13

694 ★	1p lake (3), one o. g., fine .....	(45)	27.00
695 ★	6p emerald. O. g., fresh, perforations cut in at right; scarce .....	(46)	75.00
	<i>See illustration on page 76</i>		

## 1864-72 CC Watermark, Perf. 12½

696 ★	1p lake (wmk sideways), 1p rose (single and strip of 3), 1sh violet; 1876 CC perf. 14 1p, 4p, 6p(2); o. g. or unused, some small faults, good to fine .....	(48a, b, 54b, 58-60)	73.50
697 ★	4p bright violet, 4p lilac, 4p gray. Last 2 o. g., varied centering, fine (49-51) .....	(49-51)	36.00
698 ★	4p gray, 1sh orange yellow. O. g., former a few irregular perforations; fine to very fine .....	(51, 55)	29.50
699 ★	6p blue green, 6p emerald, 6p yellow green. O. g., well centered, fine to very fine .....	(52, 52a, 53a)	37.00
700 ☒	6p emerald, pair, 1sh violet, 1sh red lilac, varied centering, fine to very fine. Tied on 3 small, neat covers 1868-69 to London (52a, 54b, c) .....		—
701 ★	6p deep green. Unused, almost centered, very fine .....	(53a)	55.00
	<i>See illustration on page 76</i>		
702 ★	1sh lilac, 1sh red lilac. O. g., fine to very fine .....	(54a, c)	47.50

## 1876 CC Watermark, Perf. 14

703 ★	6p, 1sh; 1882 CA 4p. O. g., 4p perforations cut in, fine; others very fine (60, 61, 65) .....		33.50
-------	--	--	-------

## 1879 CC Watermark

704 ★田	½p lilac, wmk sideways, block of 4 with left sheet margin. O. g., fine to very fine. S. G. 99a - £6.10.0 .....	(62 var.)	—
--------	---	-----------	---

## 1882 CA Watermark

705 ★田	½p lilac, block of 4. O. g., fresh, perforations touch, a fine block of great rarity. Underpriced Scott, S. G. £100 as 4 singles .....	(63)	80.00 +
	<i>See illustration on page 76</i>		

## 1882 CA Watermark

706 ★	4p gray. O. g., fresh, very fine .....	(65)	17.50
-------	--	------	-------





692



695



701



707



705



712



719



728



734



735



736



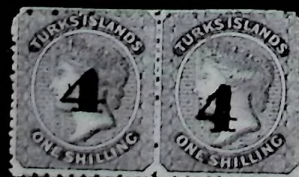
737



738



739



740



747



749

## 1882 Manuscript Surcharge

- 707 ○ 1p in black on 6p green. Negligible tiny thinning, fine and rare (66) 175.00  
*See illustration opposite*
- 708 ☒ 1p in red on 6p, two horiz. blocks of 8, arranged in form of a block of 16, mostly fine to very fine. Cancelled by TRINIDAD, April 27, 84 on attractive backstamped envelope to Edinburgh, Scotland (67) 28.00+
- 709 ★○ 1864-98, coll. of 34 stamps, 2 used, others mostly o.g., vals to 5sh, incl. #56, 57, 62, 64, 67 (single and block of 4), 68-73, 87, 91 and J1-9; generally fine; on album pages ..... 65.95
- 710 ★ Officials, 1893-94 ½p to 5sh, compl. set, o.g., gum toned or age stained but practically invisible from the front; fine ..... (O1-7) 59.00

## TURKS ISLANDS

## 1867 Unwatermarked

- 711 ★○ 6p, 1sh(2); 1873-79 1p rose red; 1881 Provisionals, 2 diff., one #3 used, others o.g. or unused, good to fine ..... (2, 3, 5, 7A, 16) 75.50
- 712 ★田 1sh slate blue, block of 4. O.g., fresh, a trifle heavily hinged, very fine ..... (3) 54.00+
- See illustration opposite*

## 1873-79 Small Star

- 713 ★田 1p dull red, horiz. block of 6 with top sheet margin. O.g., fresh, faint bend top left; very fine block ..... (4) 30.00+
- 714 ○ 1p dull red, single and pair. Very fine ..... (4) 12.00+
- 715 ★田 1p rose red, vert. block of 6. O.g., fresh, partly severed by scissors trimming a few perforations, fine block ..... (5) 36.00+



716

717

- 716 ★ 1sh violet. O.g., fresh, good color, well centered. An extremely fine copy of this rarity ..... (6) 500.00  
*See illustration*
- 717 ○ 1sh violet. Very lightly cancelled, fairly well centered and very fine. With "Royal" certificate ..... (6) 350.00  
*See illustration*

## 1881 Surcharges

## ½p Provisionals

- 718 ★ ½p on 6p gray black, the 2 diff. types. One o.g., fine to very fine ..... (7, 7A) 35.00
- 719 ★ ½p on 6p gray black (type b), vert. strip of 3, setting 2, from corner of sheet with wide sheet margins top and left. O.g., perforations touch, fine to very fine ..... (7A) 45.00+
- See illustration opposite*



- 720 ★  $\frac{1}{2}$ p on 1sh slate blue (type b). O. g., fresh, well centered and very fine (8) 20.00
- 721 ★  $\frac{1}{2}$ p on 1p dull red, 4 diff. types. Two o. g., varied centering, averagely fine (9-12) 34.00
- 722 ★  $\frac{1}{2}$ p on 1p dull red, vert. right marginal pair compr. types c and a,  $\frac{1}{2}$ p on 1sh, without fraction bar. O. g., very fine for these (9, 11, 15) 25.00+
- 723 ★  $\frac{1}{2}$ p on 1p dull red (type e). O. g., perforations cut in, fine (13) 30.00
- 724 ★  $\frac{1}{2}$ p on 1sh violet, vert. pair, compr. types a and b (Sett. 4). O. g., fine to very fine (14, 15) 27.00+
- 725 ★  $\frac{1}{2}$ p on 1sh violet, vert. strip of 3, compr. types a, b and b without fraction bar (Sett. 4). O. g., very fine for these (14, 15, 15a) 39.00+
- 726 ★  $\frac{1}{2}$ p on 1sh violet, vert. pair with right sheet margin, both type b, top stamp without fraction bar (Sett. 5). O. g., fine to very fine (15, 15a) 24.00+
- 727 ★  $\frac{1}{2}$ p on 1sh violet, vert. top right corner strip of 3, all type b, top stamp without fraction bar (Sett. 5). O. g., fresh, fine to very fine for these (15, 15a) 36.00+
- 728 ★  $\frac{1}{2}$ p on 1sh violet, vert. top right corner strip of 3, top pair type c, other type a (Sett. 10). O. g., fine to very fine (14, 16) 45.00+  
*See illustration on page 76*

#### $2\frac{1}{2}$ p Provisionals

- 729 ★  $2\frac{1}{2}$ p on 6p gray black (type b). O. g., fresh and fine (19) 30.00
- 730 ★  $2\frac{1}{2}$ p on 1sh violet (type b), with top sheet margin (Sett. 5). O. g., very fine (21) 75.00+



731

733

732

- 731 ★  $2\frac{1}{2}$ p on 6p gray black (type k; Sett. 7). Large part o. g., very fine for this very rare stamp (24) 900.00  
*See illustration*
- 732 ★  $2\frac{1}{2}$ p on 1sh slate blue (type m; Sett. 9). Unused, partly severed by scissors trimming some perforations at left, fine (27) 600.00  
*See illustration*
- 733 ★  $2\frac{1}{2}$ p on 1p dull red, vert. pair, compr. types l and o (Sett. 8). Large part o. g., fresh, fine to very fine (29, 30) 225.00+  
*See illustration*

- 734 ★ 2½p on 1sh violet (type 1; Sett. 8). O.g., fresh, very fine for this stamp (31) 75.00  
*See illustration on page 76*

- 735 ★ 2½p on 1sh violet (type o; Sett. 8). Part o.g., fine ..... (32) 100.00  
*See illustration on page 76*

## 4p Provisionals

- 736 ★ 4p on 6p gray black, horiz. pair, compr. types p and q (Sett. 1). O.g., fine to very fine ..... (33, 34) 47.50+  
*See illustration on page 76*

- 737 ★ 4p on 6p gray black (type r; Sett. 1). O.g., fresh, perforations cut in at top, fine ..... (35) 70.00  
*See illustration on page 76*

- 738 ★ 4p on 1p dull red, horiz. bottom marginal pair, compr. types p and r (Sett. 6). O.g., left stamp minute thinning; scarce pair .... (36, 37) 125.00+  
*See illustration on page 76*

- 739 ○ 4p on 1p dull red (type r; Sett. 6). Well centered, very fine ..... (36) 75.00  
*See illustration on page 76*

- 740 ★ 4p on 1sh violet, horiz. pair, compr. types p and q (Sett. 3). O.g., fresh, fine to very fine ..... (38, 39) 185.00+  
*See illustration on page 76*

## 1881 CC Watermark

- 741 ★ 1sh slate green. O.g., fresh and fine ..... (42) 30.00

## 1893

- 742 ★ ½p on 4p gray. O.g., fresh, almost centered, very fine ..... (56) 40.00

- 743 ☒ ½p on 4p gray, horiz. pair, bottom sheet margin with control; minor wrinkles, fine to very fine and 4p gray. Tied by "T1" to envelope-front Turks Islands, Febr. 7, 95 to England ..... (56, 50) 71.00+

- 744 ★ 1881-95, coll. of 17 stamps, incl. 2 shades; mostly o.g., #41 slight pinkish stain, generally fine ..... (40, 41, 43-47, etc.) 46.05

## VIRGIN ISLANDS

## 1866 Perforated 12

- 745 ★ 1p, 6p; 1867-68 1p yellow green, 4p, 1sh (colored margins); all o.g. except #4; fine to very fine ..... (1, 2, 4, 5, 8a) 45.00

## 1867-68 Perforated 15

- 746 ★○ 4p, 1sh; 1888 4p on 1sh; 1sh o.g., thinned, very fine appearance, others used, tiny perf. faults, fine ..... (5, 7, 18) 58.00

- 747 ★ 6p rose, toned paper. O.g., centered, very fine ..... (6a) 75.00  
*See illustration on page 76*

- 748 ○ 1sh rose & black. Full centered "A91" cancellation, centered to top right, almost very fine ..... (7) 30.00

- 749 ★ 1sh rose & black, double lined frame. Unused, very fine but for traces of toning ..... (7b) 50.00  
*See illustration on page 76*

- 750 ○ Colored margins 1sh; 1887 4p; 1889 1p; all used, very fine (8, 16a, 19) 22.25



## 1879 CC Watermark

751 ★ 1p green; 1880 CC 1p green, 2½p red brown. O. g., fresh, fine to very fine ..... (9-11) 35.00

752 ★ 1883-89 issues compl. except the 4p Provisional. O. g., fine to very fine (12-17, 19, 20) 33.50

## 1888 Perforated 15

753 ★ 4p on 1sh deep rose, o. g., fresh, very fine ..... (18) 20.00

## END OF SALE

FUTURE *Alfred H. Caspary* AUCTIONS

*Sale Ten*

OCTOBER 8, 9, 1957

HAWAII

and

CONFEDERATE STATES, GENERAL ISSUES

*Sale Eleven*

NOVEMBER 18, 19, 20, 21, 1957

(previously scheduled for December 2, 3, 4, 5)

EUROPE, PART ONE

Principally Belgium, France and Colonies, Romania, Switzerland  
and Scandinavia*Sale Twelve*

FEBRUARY 26, 27, 28, 1958

BRITISH COMMONWEALTH, PART THREE

comprising

BRITISH EUROPE, ASIA and AFRICA

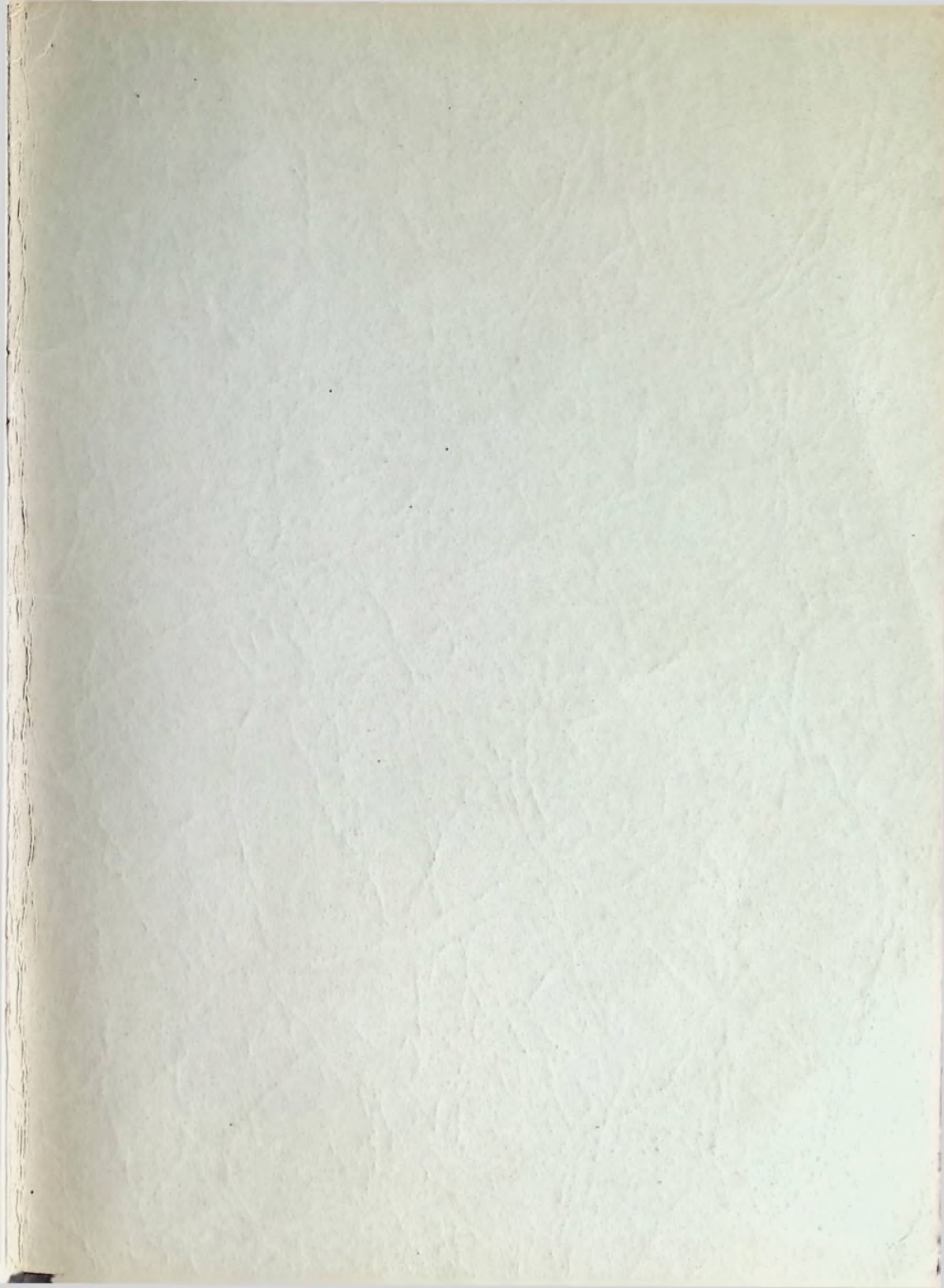
*Sale Thirteen*

MARCH 26, 27, 28, 29, 1958

EUROPE, PART TWO

comprising

Austria, Austrian Italy, Spain and the second, and final,  
portions of the German States and Italian States









BRITISH COMMONWEALTH

— Part Two —

BRITISH WEST INDIES

LIST OF PRICES REALIZED

at the auction held on

Tuesday, Wednesday

May 14, 15, 1957



*H. R. Harmer, Inc.*

6 WEST 48th STREET, NEW YORK 36, N. Y.

PRICE 75c: 6/-



MAY 14, 15, 1957

— Part Two —

**Total Realized . . . \$89,859.00**

[illegible]

Lot	Price	Lot	Price	Lot	Price	Lot	Price	Lot	Price	Lot	Price
199	3200.00	266	16.00	333	21.00	400	14.00	467	85.00	534	100.00
200	380.00	267	5.50	334	130.00	401	12.00	468	40.00	535	16.00
201	240.00	268	95.00	335	34.00	402	19.00	469	9.50	536	28.00
202	340.00	269	20.00	336	10.00	403	12.50	470	15.00	537	110.00
203	875.00	270	125.00	337	40.00	404	26.00	471	34.00	538	55.00
204	300.00	271	44.00	338	18.00	405	35.00	472	12.50	539	30.00
205	1000.00	272	28.00	339	31.00	406	23.00	473	42.00	540	52.50
206	1100.00	273	23.00	340	9.00	407	11.00	474	40.00	541	11.00
207	650.00	274	19.00	341	19.00	408	13.50	475	12.50	542	95.00
208	190.00	275	7.50	342	21.00	409	19.00	476	18.00	543	100.00
209	340.00	276	6.50	343	11.00	410	60.00	477	12.00	544	29.00
210	320.00	277	17.50	344	30.00	411	22.00	478	15.00	545	210.00
211	190.00	278	55.00	345	28.00	412	17.00	479	8.00	546	130.00
212	160.00	279	65.00	346	13.00	413	85.00	480	10.00	547	280.00
213	67.50	280	35.00	347	17.00	414	50.00	481	17.00	548	850.00
214	60.00	281	45.00	348	210.00	415	22.00	482	16.00	549	185.00
215	1900.00	282	70.00	349	220.00	416	210.00	483	72.50	550	55.00
216	190.00	283	120.00	350	16.00	417	190.00	484	21.00	551	13.00
217	210.00	284	270.00	351	14.00	418	105.00	485	46.00	552	38.00
218	225.00	285	50.00	352	8.00	419	24.00	486	15.50	553	290.00
219	1000.00	286	130.00	353	19.00	420	16.00	487	40.00	554	300.00
220	28.00	287	34.00	354	22.00	421	35.00	488	18.00	555	20.00
221	225.00	288	180.00	355	25.00	422	25.00	489	18.00	556	21.00
222	210.00	289	52.50	356	18.00	423	20.00	490	14.50	557	380.00
223	85.00	290	90.00	357	15.00	424	13.00	491	16.50	558	16.00
224	95.00	291	220.00	358	19.00	425	11.00	492	23.00	559	150.00
225	75.00	292	160.00	359	26.00	426	42.50	493	72.50	560	130.00
226	310.00	293	150.00	360	18.00	427	21.00	494	8.00	561	55.00
227	240.00	294	75.00	361	220.00	428	60.00	495	8.00	562	15.00
228	475.00	295	50.00	362	16.00	429	16.00	496	40.00	563	44.00
229	28.00	296	35.00	363	50.00	430	26.00	497	21.00	564	110.00
230	200.00	297	44.00	364	12.00	431	65.00	498	10.00	565	16.50
231	23.00	298	420.00	365	37.50	432	30.00	499	28.00	566	29.00
232	210.00	299	17.00	366	26.00	433	40.00	500	145.00	567	44.00
233	150.00	300	23.00	367	10.00	434	100.00	501	14.50	568	16.00
234	270.00	301	23.00	368	17.00	435	40.00	502	90.00	569	12.00
235	375.00	302	19.00	369	9.00	436	130.00	503	26.00	570	25.00
236	1400.00	303	16.00	370	36.00	437	6.50	504	525.00	571	65.00
237	52.50	304	28.00	371	21.00	438	15.00	505	21.00	572	1600.00
238	22.50	305	13.00	372	30.00	439	25.00	506	23.00	573	15.50
239	800.00	306	6.00	373	21.00	440	35.00	507	32.00	574	20.00
240	70.00	307	30.00	374	13.00	441	36.00	508	380.00	575	18.00
241	44.00	308	15.00	375	9.00	442	9.00	509	240.00	576	23.00
242	57.50	309	13.00	376	25.00	443	25.00	510	55.00	577	7.00
243	34.00	310	47.50	377	16.00	444	8.00	511	22.00	578	22.00
244	12.00	311	77.50	378	38.00	445	15.50	512	220.00	579	5.00
245	210.00	312	7.50	379	16.00	446	80.00	513	18.00	580	8.00
246	75.00	313	200.00	380	25.00	447	24.00	514	320.00	581	33.00
247	6.00	314	37.50	381	135.00	448	6.00	515	52.50	582	18.00
248	360.00	315	18.00	382	12.00	449	13.00	516	10.00	583	14.00
249	13.00	316	44.00	383	15.00	450	110.00	517	100.00	584	67.50
250	150.00	317	15.00	384	32.00	451	11.00	518	200.00	585	11.00
251	90.00	318	50.00	385	5.00	452	15.00	519	44.00	586	10.50
252	625.00	319	25.00	386	52.50	453	21.00	520	400.00	587	8.00
253	180.00	320	9.00	387	15.00	454	35.00	521	7.00	588	17.00
254	1600.00	321	20.00	388	28.00	455	24.00	522	90.00	589	17.00
255	350.00	322	20.00	389	13.00	456	11.00	523	58.00	590	8.00
256	120.00	323	20.00	390	80.00	457	30.00	524	750.00	591	40.00
257	1100.00	324	12.00	391	20.00	458	13.00	525	13.50	592	130.00
258	380.00	325	92.50	392	23.00	459	130.00	526	95.00	593	70.00
259	900.00	326	120.00	393	10.00	460	37.50	527	120.00	594	150.00
260	7000.00	327	26.00	394	18.00	461	22.00	528	160.00	595	145.00
261	90.00	328	190.00	395	32.00	462	32.00	529	55.00	596	30.00
262	6.50	329	23.00	396	21.00	463	11.50	530	32.50	597	475.00
263	32.00	330	240.00	397	85.00	464	15.00	531	23.00	598	220.00
264	5.50	331	120.00	398	30.00	465	24.00	532	750.00	599	150.00
265	320.00	332	17.00	399	65.00	466	12.00	533	230.00	600	210.00



Lot	Price	Lot	Price	Lot	Price	Lot	Price	Lot	Price	Lot	Price
601	160.00	627	57.50	653	30.00	679	10.00	705	500.00	731	850.00
602	120.00	628	13.00	654	10.50	680	13.00	706	17.00	732	240.00
603	70.00	629	105.00	655	26.00	681	65.00	707	110.00	733	425.00
604	35.00	630	57.50	656	7.00	682	60.00	708	67.50	734	75.00
605	32.50	631	140.00	657	80.00	683	17.00	709	18.00	735	27.50
606	200.00	632	44.00	658	45.00	684	13.00	710	15.00	736	35.00
607	21.00	633	65.00	659	42.50	685	14.00	711	16.00	737	18.00
608	30.00	634	52.50	660	32.00	686	8.50	712	52.50	738	85.00
609	12.00	635	45.00	661	15.00	687	60.00	713	20.00	739	50.00
610	8.00	636	20.00	662	13.00	688	15.00	714	8.00	740	100.00
611	50.00	637	25.00	663	30.00	689	18.00	715	18.00	741	15.00
612	130.00	638	15.00	664	6.00	690	8.50	716	825.00	742	27.00
613	17.00	639	20.00	665	110.00	691	14.00	717	225.00	743	45.00
614	170.00	640	8.00	666	27.00	692	110.00	718	16.00	744	13.00
615	160.00	641	6.00	667	15.00	693	15.00	719	70.00	745	19.00
616	40.00	642	8.00	668	11.50	694	8.00	720	22.00	746	8.50
617	37.50	643	8.00	669	200.00	695	28.00	721	9.00	747	80.00
618	14.00	644	12.00	670	30.00	696	10.50	722	17.00	748	16.00
619	13.00	645	45.00	671	14.50	697	13.00	723	26.00	749	23.00
620	28.00	646	120.00	672	11.00	698	8.00	724	13.00	750	10.00
621	22.00	647	2100.00	673	25.00	699	23.00	725	29.00	751	21.00
622	42.50	648	360.00	674	25.00	700	75.00	726	8.50	752	15.00
623	22.00	649	10.50	675	7.00	701	42.50	727	19.00	753	13.00
624	6.50	650	7.50	676	11.00	702	20.00	728	67.50		
625	80.00	651	10.50	677	21.00	703	8.00	729	32.00		
626	13.00	652	6.00	678	27.00	704	7.00	730	77.50		

### CATALOGUE CORRECTIONS

Lot 110 Should read "strip of 3"

Lot 186 Should read "March 31"

Lot 533 "★" instead of "○"